

## Gastroduodenitis associated with ulcerative colitis: A case report

Ye Yang, Chun-Qiang Li, Wu-Jie Chen, Zhen-Hua Ma, Gang Liu

**ORCID number:** Ye Yang 0000-0002-8477-9829; Chun-Qiang Li 0000-0002-7852-1637; Wu-Jie Chen 0000-0002-6112-0220; Zhen-Hua Ma 0000-0002-1012-2904; Gang Liu 0000-0002-6560-3457.

**Author contributions:** Yang Y collected basic information from the patient and image data, and wrote the main content of the manuscript; Li CQ, Chen WJ, and Ma ZH are involved in the manuscript writing and revision; Liu G provided guidance on the writing of the manuscript.

**Informed consent statement:** Informed written consent was obtained from the patient for publication of this report and any accompanying images.

**Conflict-of-interest statement:** The authors declare that they have no conflict of interest.

**CARE Checklist (2016) statement:** The authors have read the CARE Checklist (2016), and the manuscript was prepared and revised according to the CARE Checklist (2016).

**Open-Access:** This article is an open-access article that was selected by an in-house editor and fully peer-reviewed by external reviewers. It is distributed in accordance with the Creative Commons Attribution NonCommercial (CC BY-NC 4.0)

**Ye Yang, Wu-Jie Chen, Zhen-Hua Ma,** Department of Gastroenterology, HwaMei Hospital, University of Chinese Academy of Sciences, Ningbo 315000, Zhejiang Province, China

**Ye Yang, Wu-Jie Chen, Zhen-Hua Ma,** Ningbo Institute of Life and Health Industry, University of Chinese Academy of Sciences, Ningbo 315000, Zhejiang Province, China

**Ye Yang, Wu-Jie Chen, Zhen-Hua Ma,** Key Laboratory of Diagnosis and Treatment of Digestive System Tumors of Zhejiang Province, Ningbo 315000, Zhejiang Province, China

**Ye Yang, Wu-Jie Chen, Zhen-Hua Ma,** Ningbo Clinical Research Center for Digestive System Tumors, Ningbo 315000, Zhejiang Province, China

**Chun-Qiang Li, Gang Liu,** Department of General Surgery, Tianjin Medical University General Hospital, Tianjin 300052, China

**Corresponding author:** Gang Liu, MD, PhD, Professor, Surgeon, Department of General Surgery, Tianjin Medical University General Hospital, No. 154 Anshan Road, Heping District, Tianjin 300052, China. [landmark1503@sina.com](mailto:landmark1503@sina.com)

### Abstract

#### BACKGROUND

Ulcerative colitis (UC) is defined as a chronic inflammatory bowel disease that can occur in any part of the large bowel. In addition, UC affects only the large bowel except for backwash ileitis and pouchitis, whereas Crohn's disease (CD) affects the entire digestive tract. Inflammatory bowel disease (IBD) patients tend to be diagnosed with CD or indeterminate colitis when combined with gastric lesion. However, in recent years, some UC patients are reported to have various degrees of lesions in gastroduodenum. Here, we report a case of gastroduodenitis associated with UC (GDUC).

#### CASE SUMMARY

A 25-year-old man with a history of Klippel-Trenaunay syndrome presented to the hospital with mucopurulent bloody stool and epigastric persistent colic pain for 2 wk. Continuous superficial ulcers and spontaneous bleeding were observed under colonoscopy. Subsequent gastroscopy revealed mucosa with diffuse edema, ulcers, errhysis, and granular and friable changes in the stomach and duodenal bulb, which were similar to the appearance of the rectum. After ruling out other possibilities according to a series of examinations, a diagnosis of GDUC was considered. The patient hesitated about intravenous corticosteroids, so he received a standardized treatment with pentasa of 3.2 g/d. After 0.5 mo of treatment, the patient's symptoms achieved complete remission. Follow-up

license, which permits others to distribute, remix, adapt, build upon this work non-commercially, and license their derivative works on different terms, provided the original work is properly cited and the use is non-commercial. See: <http://creativecommons.org/licenses/by-nc/4.0/>

**Manuscript source:** Unsolicited manuscript

**Received:** April 23, 2020

**Peer-review started:** April 23, 2020

**First decision:** June 13, 2020

**Revised:** June 23, 2020

**Accepted:** July 30, 2020

**Article in press:** July 30, 2020

**Published online:** September 6, 2020

**P-Reviewer:** Rosen SA

**S-Editor:** Wang DM

**L-Editor:** MedE-Ma JY

**P-Editor:** Zhang YL



endoscopy and imaging findings showed no evidence of recurrence for 26 mo.

## CONCLUSION

The occurrence of gastrointestinal involvement in UC is rare, which may open a new window for studying the etiology and pathogenesis of UC. Physicians should consider broad differential diagnosis by endoscopic biopsy and laboratory examinations.

**Key words:** Ulcerative colitis; Gastritis; Duodenitis; Gastroduodenitis; Abdominal pain; Case report

©The Author(s) 2020. Published by Baishideng Publishing Group Inc. All rights reserved.

**Core tip:** Gastroduodenitis associated with ulcerative colitis (GDUC) is rare. We here report a case of GDUC. The Diagnosis and treatment process was described in detail, which may open a new window for studying the etiology and pathogenesis of UC. We also discussed the relationship between UC and gastric lesions. Physicians should consider broader differential diagnosis by endoscopic biopsy and laboratory examinations.

**Citation:** Yang Y, Li CQ, Chen WJ, Ma ZH, Liu G. Gastroduodenitis associated with ulcerative colitis: A case report. *World J Clin Cases* 2020; 8(17): 3847-3852

**URL:** <https://www.wjgnet.com/2307-8960/full/v8/i17/3847.htm>

**DOI:** <https://dx.doi.org/10.12998/wjcc.v8.i17.3847>

## INTRODUCTION

Ulcerative colitis (UC) is a chronic nonspecific inflammatory disease of the colon and rectum. Its etiology is unclear. Some studies have confirmed that the disease is related to genetic, infectious and autoimmune factors<sup>[1]</sup>. Bloody diarrhea is the most common early symptom. Other symptoms include abdominal pain, hematochezia, weight loss, vomiting and so on. UC generally affects rectum and colon. The upper digestive tract is not generally considered to be the target organ in UC. In recent years, it has been reported that gastric and duodenal mucosal lesions may also occur in patients with UC<sup>[2-3]</sup>. We describe a rare case of UC involving gastroduodenum, and demonstrates that the manifestations of the gastroduodenum under endoscopy, histopathology and radiography are similar to the lesions of colorectum.

## CASE PRESENTATION

### Chief complaints

A 25-year-old man presented to the hospital with mucopurulent bloody stool and epigastric persistent colic pain.

### History of present illness

The patient's symptoms started 2 wk ago. He was treated with a 2-wk course of standard anti-acid treatment as well as symptomatic therapies, such as spasmolysis and antibiotics, which were ineffective in alleviating his symptoms.

### History of past illness

The patient was previously diagnosed with Klippel-Trenaunay syndrome.

### Physical examination

The patient's vital signs were stable. Physical examination showed epigastric tenderness.

### Laboratory examinations

Laboratory results showed a significant elevation of white-cell count and C-reactive protein value, which were respectively  $18.8 \times 10^9/L$  and 59 mg/L. Tests for perinuclear

antineutrophil cytoplasmic antibodies and anti-*Saccharomyces cerevisiae* antibodies were negative. Neither *Helicobacter Pylori* nor *Epstein-Barr* virus infection was detected.

### Imaging examinations

Endoscopy revealed mucosa with diffuse edema, ulcers, errhysis, and granular and friable changes in the stomach (Figure 1A and B) and duodenal bulb (Figure 1C), which were similar to the appearance of the rectum (Figure 1D). Biopsy specimens from the gastroduodenum (Figure 2A and B) and colorectum (Figure 2C) showed diffuse inflammation, acute cryptitis, and abscesses. Disease activity and extent were determined, and the activity of the mucosal inflammation was scored using the Mayo endoscopic subscore (Table 1).

### Further diagnostic work-up

In order to determine whether other parts of the digestive tract were also involved, enteroscopy was suggested, but the patient refused. We identified the intactness of the small intestine through looking into the terminal ileum by colonoscopy and computed tomography (CT). Diffuse thickening of the stomach and colorectal wall was seen on CT, while the small intestine was not involved (Figure 3).

---

## FINAL DIAGNOSIS

---

Gastroduodenitis associated with ulcerative colitis (GDUC).

---

## TREATMENT

---

The patient received a standardized treatment with pentasa of 3.2 g/d.

---

## OUTCOME AND FOLLOW-UP

---

After 0.5 mo of treatment, the patient's symptoms achieved complete remission. The follow-up endoscopy showed no significant abnormalities in the fundus of the stomach, duodenum, or rectum. Polypoid hyperplasia was observed in the gastric antrum (Figure 4). The Mayo endoscopic subscore suggested that the mucosal inflammation was "normal or inactive disease" (Table 1). The follow-up endoscopy and imaging examination showed no evidence of recurrence for 26 mo.

---

## DISCUSSION

---

In the past years, there has been a consensus that UC is limited to colon and rectum, and total colorectal resection is thus regarded as radical treatment. Little is known about UC involving gastroduodenum. In recent years, there have been some reports describing the involvement of the upper digestive tract in UC<sup>[6-9]</sup>. The concept of GDUC was first proposed by Hori *et al*<sup>[10]</sup>, but the diagnosis standard is not rigorous enough due to the scanty reports. More extensive colitis and a lower dose of prednisolone administration might be the main risk factors for GDUC<sup>[9,11]</sup>.

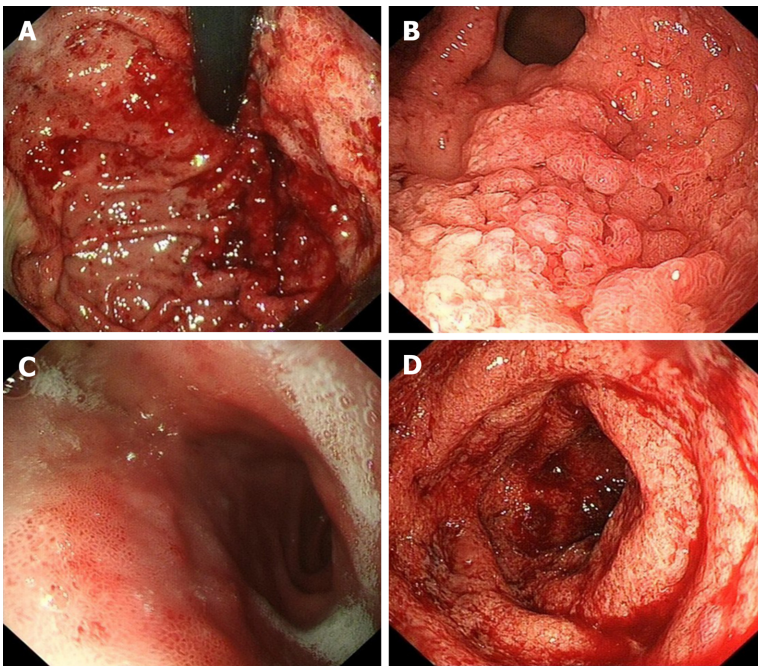
Although the etiology of GDUC is unclear, several studies have revealed that it may be associated with the imbalance of immune response of genetically susceptible hosts to bacterial antigens, resulting in an excessive autoimmune response to the gastroduodenal epithelium<sup>[3,10]</sup>. Remarkably, inflammatory cells of the gastrointestinal tract in patients with GDUC were recruited from primary colorectal lesions *via* memory T cells<sup>[3,10]</sup>.

Upper gastrointestinal lesions of GDUC are usually recognized by endoscopy, and these lesions are defined as friable mucosa, granular mucosa, or, conditionally, multiple aphthae<sup>[10]</sup>. Pathologic examination of UC reveals that the lesions are limited to the mucosal layer with Paneth cell metaplasia, mucin depletion, distortion of crypt architecture, crypt abscesses, and infiltrates of the mucosa with inflammatory cells. It is noticeable that the gastroduodenal lesions in the present case possessed similar pathological features with the colorectal lesion, which is consistent with the previous reports<sup>[3,9-11]</sup>. Furthermore, Hisabe *et al*<sup>[3]</sup> proposed diagnostic criteria for GDUC: (1)

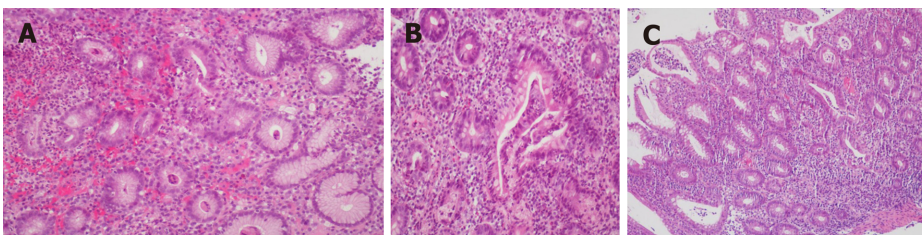
**Table 1 Mayo endoscopic subscore for assessment of ulcerative colitis**

Locations	MES	
	Before treatment	After treatment
Gastroduodenum	3	0
Rectum	3	0

MES: Mayo Endoscopic Subscore; 0: Normal or inactive disease; 1: Mild disease (erythema, decrease vascular pattern, mild friability); 2: Moderate disease (marked erythema, absent vascular pattern, friability, erosions); 3: Severe disease (spontaneous bleeding, ulceration).



**Figure 1 Mucosal manifestation under gastroscopy and enteroscopy.** A: Gastroscopy showed diffuse edema and local mucosal erosion, ulcers, and bleeding in the fundus of the stomach; B: Granular and friable changes were observed in the gastric antrum without causing lumen stenosis; C: The mucosa contained edema and erosions in front of the duodenal bulb; D: Continuous superficial ulcers and spontaneous bleeding were observed in the rectum by colonoscopy.



**Figure 2 Biopsy specimens from the gastroduodenum and colorectum [hematoxylin and eosin (HE) staining, original magnification ×100].** A: Diffuse inflammation accompanied by an abscess in the lesser curvature of the stomach; B: Diffuse inflammation in the duodenum; C: Diffuse colitis with a crypt abscess.

Improvement of the lesions with treatment of UC; and/or (2) Resemblance of the lesions to UC in pathological findings. In our case, diagnosis was established based on the initial treatment failure, exclusion of autoimmune, nonautoimmune conditions and infection, the high degree of similarity between the gastroduodenal and colorectal manifestations, and the good response to mesalamine. Therefore, more studies are needed to explore the pathogenesis of UC in the future.



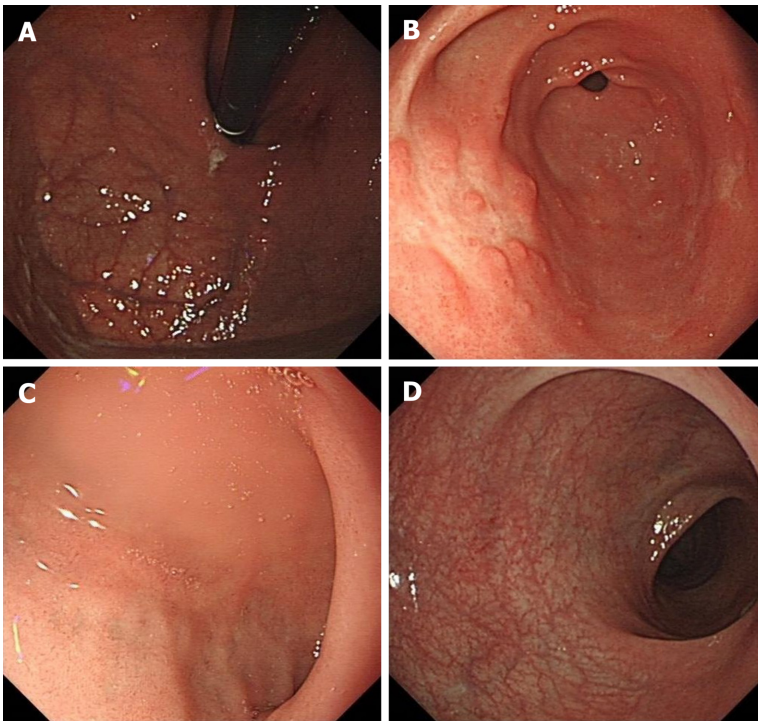


**Figure 3 Abdominal computed tomography.** Diffuse thickening in stomach and colorectum wall was seen, while the small intestine was not involved.

---

## CONCLUSION

Our report describes a case of GDUC. The occurrence of gastrointestinal involvement in UC is rare. This report may open a new window for studying the etiology and pathogenesis of UC. We also discussed the relationship between UC and gastric lesions. Physicians should consider broader differential diagnosis by endoscopic biopsy and laboratory examinations.



**Figure 4 Follow-up endoscopy.** Endoscopy showed no significant abnormalities in the fundus of the stomach (A), duodenum (C) or rectum (D). Polypoid hyperplasia was observed in the gastric antrum (B).

## REFERENCES

- 1 **Gould NJ**, Davidson KL, Nwokolo CU, Arasaradnam RP. A systematic review of the role of DNA methylation on inflammatory genes in ulcerative colitis. *Epigenomics* 2016; **8**: 667-684 [PMID: [27096966](#) DOI: [10.2217/epi-2016-0006](#)]
- 2 **Kato R**, Iwamuro M, Hiraoka S, Takashima S, Inokuchi T, Takahara M, Kondo Y, Tanaka T, Okada H. Evaluation of the Upper Gastrointestinal Tract in Ulcerative Colitis Patients. *Acta Med Okayama* 2018; **72**: 105-113 [PMID: [29674758](#) DOI: [10.18926/AMO/55850](#)]
- 3 **Hisabe T**, Matsui T, Miyaoka M, Ninomiya K, Ishihara H, Nagahama T, Takaki Y, Hirai F, Ikeda K, Iwashita A, Higashi D, Futami K. Diagnosis and clinical course of ulcerative gastroduodenal lesion associated with ulcerative colitis: possible relationship with pouchitis. *Dig Endosc* 2010; **22**: 268-274 [PMID: [21175478](#) DOI: [10.1111/j.1443-1661.2010.01006.x](#)]
- 4 **Li M**, Liu Y, Cui J, Qin H, Shi Y, Zhang S, Zhao Y. Ulcerative colitis with mucosal lesions in duodenum: Two case reports. *Medicine (Baltimore)* 2019; **98**: e15035 [PMID: [30946342](#) DOI: [10.1097/MD.00000000000015035](#)]
- 5 **Rubenstein J**, Sherif A, Appelman H, Chey WD. Ulcerative colitis associated enteritis: is ulcerative colitis always confined to the colon? *J Clin Gastroenterol* 2004; **38**: 46-51 [PMID: [14679327](#) DOI: [10.1097/00004836-200401000-00011](#)]
- 6 **Valdez R**, Appelman HD, Bronner MP, Greenson JK. Diffuse duodenitis associated with ulcerative colitis. *Am J Surg Pathol* 2000; **24**: 1407-1413 [PMID: [11023103](#) DOI: [10.1097/00000478-200010000-00011](#)]
- 7 **Ikeuchi H**, Hori K, Nishigami T, Nakano H, Uchino M, Nakamura M, Kaibe N, Noda M, Yanagi H, Yamamura T. Diffuse gastroduodenitis and pouchitis associated with ulcerative colitis. *World J Gastroenterol* 2006; **12**: 5913-5915 [PMID: [17007066](#) DOI: [10.3748/wjg.v12.i36.5913](#)]
- 8 **Terashima S**, Hoshino Y, Kanzaki N, Kogure M, Gotoh M. Ulcerative duodenitis accompanying ulcerative colitis. *J Clin Gastroenterol* 2001; **32**: 172-175 [PMID: [11205658](#) DOI: [10.1097/00004836-200102000-00018](#)]
- 9 **Sasaki M**, Okada K, Koyama S, Yoshioka U, Inoue H, Fujiyama Y, Bamba T. Ulcerative colitis complicated by gastroduodenal lesions. *J Gastroenterol* 1996; **31**: 585-589 [PMID: [8844483](#) DOI: [10.1007/bf02355062](#)]
- 10 **Hori K**, Ikeuchi H, Nakano H, Uchino M, Tomita T, Ohda Y, Hida N, Matsumoto T, Fukuda Y, Miwa H. Gastroduodenitis associated with ulcerative colitis. *J Gastroenterol* 2008; **43**: 193-201 [PMID: [18373161](#) DOI: [10.1007/s00535-007-2143-8](#)]
- 11 **García Gavilán MDC**, López Vega MC, Sánchez IM. Ulcerative colitis with gastric and duodenal involvement. *Rev Esp Enferm Dig* 2017; **109**: 535-536 [PMID: [28530110](#) DOI: [10.17235/reed.2017.4685/2016](#)]



Published by **Baishideng Publishing Group Inc**  
7041 Koll Center Parkway, Suite 160, Pleasanton, CA 94566, USA

**Telephone:** +1-925-3991568

**E-mail:** [bpgoffice@wjgnet.com](mailto:bpgoffice@wjgnet.com)

**Help Desk:** <https://www.f6publishing.com/helpdesk>

<https://www.wjgnet.com>

