



ARTICLE

Genetic Analysis and Characterization of a Bacteriophage ØCJ19 Active against Enterotoxigenic *Escherichia coli*

Gyeong-Hwui Kim¹, Jae-Won Kim², Jaegon Kim¹, Jong Pyo Chae², Jin-Sun Lee¹, and Sung-Sik Yoon^{1,*}

¹Department of Biological Science and Technology, Yonsei University, Wonju 26493, Korea

²Institute of Biotechnology, CJ CheilJedang, Suwon 16495, Korea



Received June 11, 2020
Revised June 29, 2020
Accepted July 7, 2020

*Corresponding author : Sung-Sik Yoon
Department of Biological Science and Technology, Yonsei University, Wonju 26493, Korea
Tel: +82-33-760-2283
Fax: +82-33-760-5576
E-mail: sungsik@yonsei.ac.kr

*ORCID
Gyeong-Hwui Kim
<https://orcid.org/0000-0003-3311-6336>
Jae-Won Kim
<https://orcid.org/0000-0001-8382-3085>
Jaegon Kim
<https://orcid.org/0000-0003-3692-2229>
Jong Pyo Chae
<https://orcid.org/0000-0001-5823-0894>
Jin-Sun Lee
<https://orcid.org/0000-0002-2550-0883>
Sung-Sik Yoon
<https://orcid.org/0000-0002-6731-144X>

Abstract Enterotoxigenic *Escherichia coli* (ETEC) is the major pathogenic *E. coli* that causes diarrhea and edema in post-weaning piglets. In this study, we describe the morphology and characteristics of ØCJ19, a bacteriophage that infects ETEC, and performed genetic analysis. Phage ØCJ19 belongs to the family *Myoviridae*. One-step growth curve showed a latent phase of 5 min and burst size of approximately 20 phage particles/infected cell. Phage infectivity was stable for 2 h between 4°C and 55°C, and the phage was stable between pH 3 and 11. Genetic analysis revealed that phage ØCJ19 has a total of 49,567 bases and 79 open reading frames (ORFs). The full genomic sequence of phage ØCJ19 showed the most similarity to an *Escherichia* phage, vB_EcoS_ESCO41. There were no genes encoding lysogeny, toxins, virulence factors, or antibiotic resistance in this phage, suggesting that this phage can be used safely as a biological agent to control ETEC. Comparative genomic analysis in terms of the tail fiber proteins could provide genetic insight into host recognition and the relationship with other coliphages. These results showed the possibility to improve food safety by applying phage ØCJ19 to foods of animal origin contaminated with ETEC and suggests that it could be the basis for establishing a safety management system in the animal husbandry.

Keywords animal husbandry, animal source food, bacteriophage, enterotoxigenic *Escherichia coli*, genome annotation

Introduction

Escherichia coli is a gram-negative, rod-shaped bacteria present in the guts of various animals, including mammals (Jang et al., 2017). Most strains of *E. coli* are non-pathogenic but can cause opportunistic infections (De Souza et al., 2019), and some highly pathogenic strains cause various intestinal diseases and sepsis in humans and animals (Fabian et al., 2020).

E. coli subtypes include enterotoxigenic *E. coli* (ETEC), enteropathogenic *E. coli*

(EPEC), enterohemorrhagic *E. coli* (EHEC), enteroaggregative *E. coli* (EAEC), and enteroinvasive *E. coli* (EIEC) (Al-Gallas et al., 2007). ETEC frequently infects newly weaned pigs, causing acute diarrhea and even death. It can also cause diarrhea, abdominal pain, and dehydration in humans (Pattabiraman et al., 2018). A recent study showed that infections with ETEC delay the growth of pigs and cause mortality owing to excessive diarrhea, resulting in huge economic losses (Yan et al., 2009). To prevent and treat ETEC in pigs, many antibiotics such as oxytetracycline and spectinomycin are commonly administered. However, excessive use of antibiotics can cause negative side effects, such as drug resistance and drug residues in pig meat (Luppi, 2017). Thus, the use of antibiotics tends to be limited worldwide, and safe biological alternatives are needed (Laxminarayan et al., 2013).

It has been common to use antibiotics in animal feed to prevent animals from disease and improve production performance in animal husbandry. On the one hand, the emergence of antibiotic-resistant bacteria due to the unreasonable use of antibiotics has sparked efforts to develop alternatives to antibiotics (Cheng et al., 2014). Bacteriophages (also known as phage) are bacterial viruses that can specifically infect bacteria and replicate in host bacteria (Chang et al., 2019). The phages are attracting attention as an alternative to antibiotics because they have a low risk of remaining in the intestine and can evade the resistance developed to antibiotics through different mechanisms (Kebriaci et al., 2020; Lee et al., 2017). Phage can also be an environmentally friendly approach to control infection and contamination of pathogens in foods of animal origin, including meat and poultry products (Bao et al., 2015). ListShield™ (Intralytix, Baltimore, MD, USA) is a phage-containing food additive that is a non-chemical antibacterial agent to control the food-borne bacterial pathogen *Listeria monocytogenes* (Gutiérrez et al., 2017). The ListShield™ was first approved by the FDA in 2006 as a spray disinfectant that inhibits *Listeria* growth by applying phage to ready-to-eat deli meats (Hesse and Adhya, 2019). The first GRAS (generally recognized as safe) designation for phage products suggested the possibility of phage food application (Bai et al., 2016). Using phage as a food additive can be an effective method for establishing a safety management system for foods of animal origin but requires in-depth research and approach in terms of safety (Endersen et al., 2014).

In this study, phage ØCJ19 infecting ETEC was isolated from porcine feces, and biological characteristics were evaluated to demonstrate the safety and possibility of phage application to foods of animal origin. Additionally, the whole genome sequence was annotated, and phage ØCJ19 was evaluated as a biological agent to control ETEC.

Materials and Methods

Isolation and propagation of phages

Fecal samples were obtained from a pig farm in Hongseong-gun, Chungcheongnam-do, Korea, suspended in 50 mL SM buffer (50 mM Tris-HCl [pH 7.5], 0.1 M NaCl, and 8 mM MgSO₄·7H₂O), and centrifuged at 4,000×g for 10 min. The supernatant was filtered using a 0.45 µm membrane filter (Dismic®-25CS, Advantec, Japan) to prepare a sample solution. Next, 18 mL supernatant and 2 mL ETEC FC02 bacterial cell culture (OD₅₄₀=0.4) were mixed and incubated at 37°C for 18 h. After centrifugation at 4,000×g for 10 min, the supernatant was filtered using a 0.45 µm membrane filter. Then, 100 µL filtered supernatant was mixed with the host bacteria *E. coli* FC02 bacterial cell culture and 5 mL Luria-Bertani (LB) broth containing 0.7% soft agar. The mixture was poured into 1.5% LB agar and incubated overnight at 37°C. Individual single plaques were harvested from the agar plate using sterile pipette tips, resuspended in 500 µL SM buffer, and the double-layer agar technique was repeated (Šimoliūnas et al., 2014).

High-titer phage preparation

A single colony of *E. coli* FC02 was resuspended in 100 mL LB broth and incubated with vigorous shaking at 37°C. When the culture reached $OD_{540}=0.4$, it was centrifuged at $4,000\times g$ for 10 min. The bacterial pellets were collected and resuspended in 3 mL SM buffer. The phage lysates were added to the suspension at multiplicity of infection (MOI) of 0.1 and mixed rapidly. After incubation for 20 min at 37°C with intermittent shaking, the suspension was added to 500 mL LB broth and incubated overnight. Chloroform was added to a concentration of 2%, and the culture was further incubated at 37°C with shaking for 30 min. Next, the culture was centrifuged at $11,000\times g$ for 10 min at 4°C, and the supernatant was filtered using a 0.45 μm membrane filter. Solid polyethylene glycol (PEG 8000) was added to the suspension to a final concentration of 10% (w/v), and the mixture was cooled on ice for 2 h. The lysate was centrifuged at $11,000\times g$ for 100 min, and the supernatant was discarded. The pellet was resuspended in 8 mL SM buffer, and the same volume of chloroform was added. The mixture was vortexed and then centrifuged at $3,000\times g$ for 15 min at 4°C. The supernatant containing the phage particles was recovered and filtered using a membrane filter (Alves et al., 2014).

Transmission electron microscopy (TEM)

The morphology of phage ϕ CJ19 was examined using TEM (JEM-2100, JEOL, Tokyo, Japan) at 200 kV. A high-titer phage solution containing 1×10^8 plaque-forming unit (pfu)/mL was negatively stained with 2% (w/v) uranyl acetate. The phage particles were placed on a carbon coating grid and dipped into distilled water containing a drop of 2% uranyl acetate. The 200-mesh grids (Gatan, Pleasanton, CA, USA) were coated with a collodion film prepared from 2% collodion in amyl acetate and used to absorb carbon film fragments with phage particles. After air drying for 10 min, the grids were subjected to TEM. Images of the negatively stained phage particles were obtained using a one-view camera (Gatan) at $\times 100,000$ and $\times 150,000$ magnification (Kim et al., 2018).

Bacterial growth experiment

Growth curve of *E. coli* FC02 for determining phage infection time. Bacterial cultures were grown in LB broth in a shaking incubator (200 rpm) at 37°C for 9 h. Measurements of absorbance (optical density, OD_{540}) were performed every 1 h.

One-step growth experiment

For one-step growth curve analysis, 5 mL *E. coli* FC02 culture in the exponential phase ($OD_{540}=0.4$) was centrifuged at $4,000\times g$ for 10 min. The pellet was resuspended in 1 mL LB broth. The phage solution was added to the suspension at a MOI of 0.1. The mixture was incubated at 37°C for 30 min and then centrifuged at $11,000\times g$ for 10 min. The pellet was resuspended in 10 mL fresh LB broth and incubated at 37°C. The phage concentration in the solution was measured at 5 min intervals for 30 min using the double-layer agar technique (Cao et al., 2015). Burst size was calculated as phage out/phage in.

Effects of temperature and pH on stability

To determine the stability of the phage at various temperatures, 1 mL phage suspension containing 1×10^8 pfu/mL was incubated at 4°C, 15°C, 25°C, 37°C, 45°C, 55°C, 65°C, 75°C, or 80°C for 2 h. The phage concentration was then measured using a double-layer agar technique. To analyze the stability of the phage at various pH levels, the pH of the SM buffer was adjusted to various levels between pH 2 and 13. A 100 μL phage suspension containing 1×10^9 pfu/mL was inoculated in 900

μL pH-adjusted SM buffer to obtain a final concentration of 1×10^8 pfu/mL. After incubation at 37°C for 2 h, the phage concentrations were measured using the double-layer agar technique (Kim et al., 2019). This experimental procedure was performed three times. The results are reported as means±SD from three observations.

Whole genome sequencing

Phage genomic DNA was purified using the Phage DNA Isolation Kit (Norgen Biotek, ON, Canada) and subjected to next-generation sequencing (NGS) using a HiSeq 4000 instrument (Illumina, San Diego, CA, USA). A DNA fragment library was constructed using the TruSeq DNA PCR Free Library Preparation Kit (Illumina, San Diego, CA, USA). A *de novo* assembly generated in the SOAPdenovo and SNAPGENE software (GSL Biotech; <https://www.snapgene.com>) was used for open reading frames (ORFs) prediction for the whole genome (Mohammed and Cormican, 2015). The genome sequence was compared with other genomes in GenBank via the BLAST program (<http://blast.ncbi.nlm.nih.gov/>). The whole genome sequences of phages ØCJ19 (GenBank accession No. MT176427) and ØCJ20 (GenBank accession No. MT533174) were deposited in the NCBI database.

Construction of phylogenetic tree

The evolutionary history of the phages was inferred using the neighbor-joining method, on based of the tail protein sequences of the isolated phage and 11 additional phages. The percentage of replicate trees in which the associated taxa clustered together in 1,000 bootstrap repetitions was shown next to the branches. The codon positions included were the first, second, and third positions and the noncoding sites. All positions containing gaps and missing data were eliminated. There were 764 positions in the final dataset. Evolutionary analyses were conducted using the MEGA 7 software (Penn State, University Park, PA, USA) (Mohammed and Cormican, 2015).

Host range test

To determine the host range of phages ØCJ19 and ØCJ20, plaque assays were performed. The ØCJ20 (unpublished data) was introduced to discuss the genetic correlation of host-range and putative tail fiber proteins with phage ØCJ19. Each of the nine host strains were inoculated into 5 mL of 0.7% soft agar, which were poured onto agar plates. Then, 10 μL high-titer phage solution was spotted onto the top agar plate and incubated overnight at 37°C. After incubation, lysis zones were examined. The lytic activity of the phage was classified as clear (+) or no (–) reaction (Lee et al., 2016).

Results and Discussion

Morphological analysis by TEM

ØCJ19 morphology was observed by TEM. ØCJ19 consisted of an icosahedral head and a contractile tail, which appeared to have a sheath-like structure. Tail fibers were not observed, but according to the result of the annotation of ORFs, a tail fiber protein was present. ØCJ19 had an icosahedral capsid that was approximately 58 nm in diameter, and a tail of approximately 163 nm length and approximately 16 nm width. The sheath width increases approximately 6 nm during contraction (Fig. 1). The International Committee on Taxonomy of Viruses (ICTV) describes that the order Caudovirales consists of three families of tailed bacterial viruses: the families Myoviridae with contractile tails, Siphoviridae with long noncontractile tails, and Podoviridae with short noncontractile tails. The taxonomic structure of Myoviridae consists of six genera: T4-, P1-, P2-, Mu-,

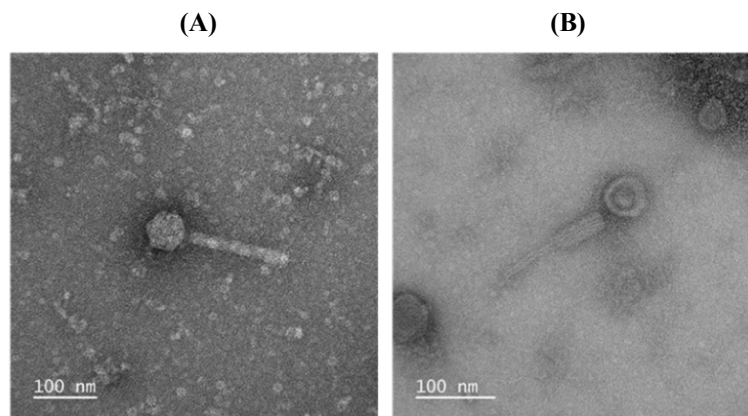


Fig. 1. Transmission electron microscopy (TEM) images of phage ØCJ19, which belongs to the family Myoviridae. Phage ØCJ19 has a noncontractile tail (A) and contractile tail (B). The phages were negatively stained with 2% (wt/vol) uranyl acetate and observed by TEM at 200 kV. Scale bars represent 100 nm.

SP01-, and ØH-like viruses. Based on TEM observation, phage ØCJ19 belongs to the order Caudovirales, family Myoviridae, and genus T4-like viruses (Mayo and Haenni, 2006).

Optimization of host bacteria

A microbial growth curve was drawn to determine the extent of the propagation of *E. coli* FC02 and the challenging time point of the phage in its exponential growth. The *E. coli* FC02 was grown at 37°C in LB broth and exhibited a lag phase of 1 h, an exponential phase of 1–7 h, and a stationary phase of 7–9 h after inoculation (Fig. 2A). The propagation of phages is known to be highly sensitive to external conditions (Wei and Zhao, 2018). Therefore, the optimal time point for challenge appeared to be 3 h in a shaking culture of *E. coli* FC02 at 37°C.

Characterization of phage ØCJ19

Fig. 2B shows the result of the one-step growth experiment of phage ØCJ19 at 37°C. This phage rapidly infects the host bacteria with a latent phase of 5 min or less, a maturation phase between 5 and 15 min, and an initial plateau phase at 15 min after infection. The burst size is approximately 20 phage particles/infected cell (Fig. 2B). In the case of phage vB_EcoS_HSE2, the latent phase and burst size are 30 min and 86 particles/infected cell, respectively (Peng and Yuan, 2018). The phage plays an important role as a predator of bacteria, and the rate at which bacteria are adsorbed is related to the density of the phages and the host bacteria (Abedon et al., 2003). It has been theorized that despite the smaller burst size, individual phages can grow rapidly by reducing the latent period (Abedon et al., 2001). A lower bacterial density has a longer latent period and a larger burst size. In other words, the lower bacterial densities are the most effectively exploited by producing more phage progeny per infected host cell. The longer the latent period, the longer it takes to acquire new phage progeny, but more phages can be produced. Here, the MOI of phage ØCJ19 had a host density 10 times higher than that of phage vB_EcoS_HSE2 (Peng and Yuan, 2018). Consequently, it is estimated that phage ØCJ19 has a shorter latent period and a smaller burst size than those of phage vB_EcoS_HSE2. Given that a phage has a long latent period, controlling host density and MOI value should be considered to produce more particles.

ØCJ19 was exposed to various temperature and pH conditions. As shown in Fig. 2C, approximately 1.0×10^8 pfu/mL was stably maintained from 4°C to 55°C and began to reduce to 3.0×10^5 pfu/mL at 65°C; no plaque was observed at 85°C. The

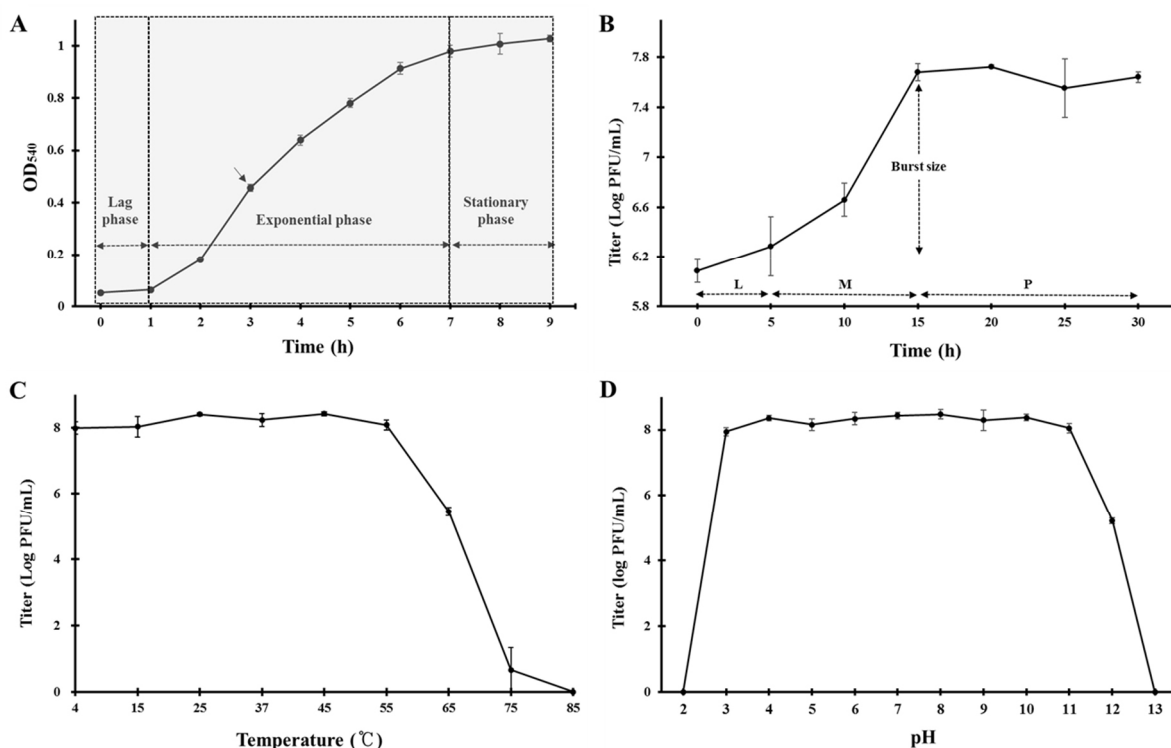


Fig. 2. Characterization of phage ϕ CJ19. (A) Growth curve of *Escherichia coli* FC02. Bacterial cultures were grown in LB broth in a shaking incubator (200 rpm) at 37°C for 9 h. Measurements of absorbance (OD=540 nm) were performed every 1 h. The infection time point of phages derived from the growth patterns is indicated by arrows (∇). (B) One-step growth curve of phage ϕ CJ19. The phage was co-cubated with a culture of the host bacteria *E. coli* FC02 to absorb for 30 min at 37°C. The solution was measured at 5 min intervals for 30 min using the double-layer agar technique. L, latent phase; M, maturation phase; P, plateau phase; B, burst size. (C) Temperature and (D) pH stability test of phage ϕ CJ19. The temperature stability was performed under various temperature conditions (4°C, 15°C, 25°C, 37°C, 45°C, 55°C, 65°C, 75°C, and 85°C) for 2 h. The pH stability test was performed under various pH conditions (pH 2 to 13) for 2 h at 37°C. Data represent mean \pm SD from three independent experiments.

stability decreased dramatically at 75°C, and it can be concluded that the optimum temperature for stability was between 4°C and 55°C (Fig. 2C). Regarding the pH stability test, the phage was maintained at approximately 1.0×10^8 pfu/mL between pH 3 and 11, with no plaque observed below pH 2 or above pH 13. This result shows that phage ϕ CJ19 significantly loses its activity under strong acidic or basic conditions (Fig. 2D). As reported previously, the phage vB_EcoS_HSE2 of pathogenic *E. coli* was stable below 50°C and between pH 3 and 9 (Peng and Yuan, 2018). These results indicate that phage ϕ CJ19 is more stable at higher temperatures and a wider pH range than phage vB_EcoS_HSE2, even though phage ϕ CJ19 was exposed for 2 h compared to the 30 min exposure for phage vB_EcoS_HSE2 (Peng and Yuan, 2018).

Genetic analysis of phage ϕ CJ19

Sequencing analysis showed that the ϕ CJ19 genome was composed of 49,567 bases, and the GC content was 46.8%. A BLAST search of the GenBank database indicated that it was closely related to the *Escherichia* phage vB_EcoS_ESCO41 with 86.4% sequence identity (Fig. 3). The genome of ϕ CJ19 was shorter than that of vB_EcoS_ESCO41 by 1,233 bases. The annotation results showed that ϕ CJ19 had a total of 79 ORFs, including 4 genes responsible for the structure proteins, 11 for replication and regulation, 3 for cell lysis, and 1 for DNA packaging and additional functions (Table 1). Fifty-nine ORFs related to hypothetical proteins are not shown in Table 1. In particular, the BLAST analysis of the tail fiber protein annotated

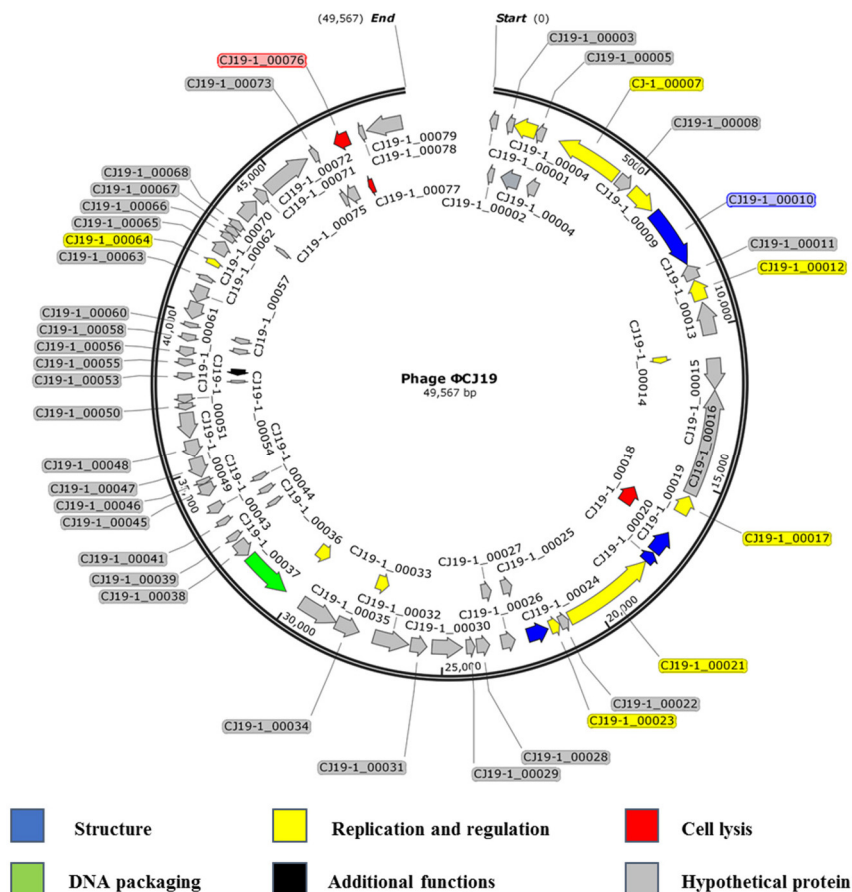


Fig. 3. Genome map of phage ØCJ19. The outer circle indicates the gene coding regions by strand. The color of each gene refers to the functional category: phage structure (blue), replication and regulation (yellow), cell lysis (red), DNA packaging (green), additional functions (black), and hypothetical protein (gray). The scale units are base pairs. The genome map was constructed using the SNAPGENE software (GSL Biotech LLC, USA).

ORF 10 revealed that the T7 tail fiber protein showed 60.95% similarity to that of *Enterobacter cloacae*. There were no genes encoding lysogeny, toxins, virulence factors, or antibiotic resistance, suggesting that the phage can be used safely as a biological control agent. However, lytic phages that do not have toxic factors or antibiotic resistance genes require further study as biocontrol agents for ETEC strains. Sequencing analysis and annotated ORFs provide important information to establish the relationships between the phages in the database. However, it is challenging to evaluate the genetic biosafety of the phages through these analyses. Recently, NGS has become a powerful tool to support these analyses, but the functions of the encoded phage genes are still unknown (Romero-Calle et al., 2019). Therefore, functions of the unknown genes need to be studied further for safe use of phages.

A phylogenetic tree based on the DNA sequences encoding the tail fiber proteins of several phages was constructed. The gene sequences of the tail fiber proteins of 11 phages similar to the ØCJ19 phage were analyzed. Phylogenetic analysis used the MEGA7 program to perform 1,000 Bootstrapping to obtain 1,000 schematics. The tail fiber protein of phage ØCJ19 with annotated ORF 10 was phylogenetically the closest to the putative tail fiber protein of *Escherichia* phage DTL. The tail fiber proteins of phage ØCJ20 and phage ØCJ19 with the common host range were found to be phylogenetically relatively close (Fig. 4). Table 2 shows the result of the plaque assay revealing the susceptibility of ØCJ19 and ØCJ20 to *E. coli* strain infection. Out of nine host strains, ØCJ19 formed plaques against three strains, FC01, FC02, and BL21. Phage ØCJ20

Table 1. Annotations of ORFs found in phage ØCJ19 genome

ORF No.	Encoded protein	Function	Length (bp)	Identity (%)	Accession no.
4	DNA N-6-adenine-methyltransferase [<i>Escherichia</i> phage vB_EcoS_ESCO41]	Replication and regulation	479	92.98	AQY55313.1
7	Helicase [<i>Enterobacteria</i> phage vB_EcoS_NBD2]	Replication and regulation	1,072	73.69	YP_009284684.1
9	DNA primase/helicase [<i>Escherichia</i> phage vB_EcoS-IME253]	Replication and regulation	588	92.16	APU93271.1
10	Tail fiber protein [<i>Enterobacter cloacae</i>]	Structure	539	60.95	SAD85978.1
12	ERF superfamily protein [<i>Escherichia</i> phage vB_EcoS_ESCO41]	Replication and regulation	426	94.04	AQY55302.1
14	gp32 [<i>Escherichia</i> phage EB49]	Replication and regulation	147	96.05	YP_009018646.1
17	Tail assembly protein I [<i>Escherichia</i> phage vB_EcoS_ESCO41]	Replication and regulation	388	97.46	AQY55296.1
18	NlpC/P60 family protein [<i>Escherichia</i> phage vB_EcoS_ESCO41]	Cell lysis	486	94.61	AQY55295.1
19	Minor tail protein [<i>Escherichia</i> phage vB_EcoS_ESCO41]	Structure	486	91.94	AQY55294.1
20	Minor tail protein [<i>Escherichia</i> phage vB_EcoS_ESCO41]	Structure	238	99.13	AQY55292.1
21	Tail length tape measure protein [<i>Escherichia</i> phage vB_EcoS_ESCO41]	Replication and regulation	1,108	60.30	AQY55291.1
23	Tape measure chaperone [<i>Escherichia</i> phage SRT8]	Replication and regulation	138	61.17	YP_009615420.1
24	Tail protein [<i>Escherichia</i> phage vB_EcoS_ESCO41]	Structure	459	99.55	AQY55289.1
33	AP2 domain protein [<i>Escherichia</i> phage vB_EcoS_ESCO41]	Replication and regulation	289	85.62	AQY55280.1
36	HNH homing endonuclease [<i>Enterobacteria</i> phage vB_EcoS_IME542]	Replication and regulation	182	55.95	QAU04414.1
37	Terminase-like family protein [<i>Escherichia</i> phage vB_EcoS_ESCO41]	DNA packaging	1,025	92.59	AQY55276.1
54	DUF600 family protein [<i>Endomicrobium proavitum</i>]	Additional function	35.8	39.53	WP_052570750.1
64	Coiled-coil and C2 domain-containing protein 1-like isoform X2 [<i>Scaptodrosophila lebanonensis</i>]	Replication and regulation	36.6	37.29	XP_030384370.1
76	Putative lysozyme [<i>Escherichia</i> phage Henu8]	Cell lysis	259	71.60	QEA10109.1
77	Putative holin [<i>Enterobacteria</i> phage vB_EcoS_NBD2]	Cell lysis	113	73.24	YP_009284693.1

ORF, open reading frame.

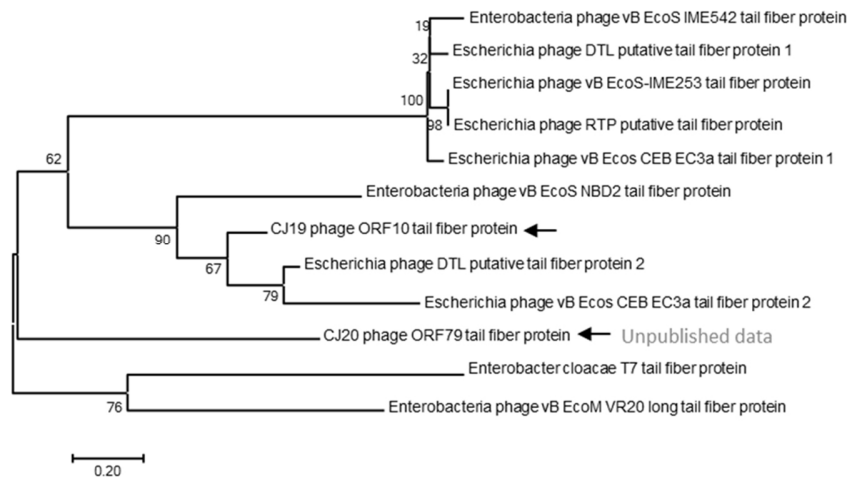


Fig. 4. Phylogenetic tree based on the tail fiber protein sequences of 11 phages similar to phage ØCJ19. Bootstrap percentage analyses were based on 1,000 replications. Phages presented in this study are indicated by arrows (←). The tree was constructed using the MEGA7 software. The bar below the figure indicates 20% homology in sequences between species.

Table 2. Host-range tests for phage ØCJ19 and ØCJ20

Strains tested ²⁾ (<i>Escherichia coli</i>)	Susceptibility ¹⁾	
	ØCJ19 ²⁾	ØCJ20 ²⁾
FC01	+	+
FC02	+	+
FC03	-	-
FC04	-	+
FC05	-	-
FC06	-	-
FC07	-	-
DH5α	-	+
BL21	+	+

¹⁾ Lytic activity was determined by plaque assay.

²⁾ Bacterial strains and phages are provided by CJ CheilJedang.

-, no lysis; +, lysis.

infected five strains with a broad spectrum. Both phages commonly infected FC01, FC02, and BL21 as the host bacterium (Table 2).

The tail fiber protein genes of phage ØCJ19 and ØCJ20 were phylogenetically relatively close (Fig. 4). Taken together, the differences in the host range are possible because of the genetic variety in the genes corresponding to the tail fiber proteins. Similarly, the tail fiber gene of phage ØCJ20 is 2,219 bp, which is longer than the 1,920 bp of phage ØCJ19. In general, the specific adsorption of a phage to its host is determined by the tail fiber binding on the bacterial surface (Yosef et al., 2017). As a feasible approach to change or expand the host range of the phage, transduction and mutation of the tail fiber gene have been studied because tail fibers are known to have proteins that recognize bacterial surfaces specifically during viral infection stages (Yoichi et al., 2005). It is assumed that the host-range differences between ØCJ19 and ØCJ20 are owing to the genetic differences in the tail fiber genes. It is necessary to further study the relationship between the genomic size of phages and their host range spectrum.

Application of phage to animal food

Previous studies have demonstrated the potential role of phage in controlling pathogenic *E. coli* in animal foods (Lee et al., 2017; Yang et al., 2017). These phages were reported to exhibit lytic activity against ETEC strains causing porcine post-weaning diarrhea (Jamalludeen et al., 2007). In addition, it has been reported that lytic coliphage JS09 isolated from sewage in China pig farms infects antibiotic-resistant avian pathogenic *E. coli* and ETEC (Zhou et al., 2015). As a result of mixing three lytic phages with a cocktail and applying them to rifampin-resistant *E. coli* O157:H7 contaminated beef surfaces, 7 out of 9 beef samples showed no *E. coli* O157:H7 contamination (O'Flynn et al., 2004). These results indicate that applying phage to food surfaces is a reasonable approach to food preservation and can be applied to other meats.

Conclusions

In this study, phage ØCJ19 was evaluated to safety and stability for application of phage to ETEC-contaminated foods of

animal origin, and proteins related to toxicity were analyzed through genetic analysis. Phage ØCJ19 has high stability, and the results of gene annotation showed that the phage contained no toxic genes. This result showed the potential to reduce the contamination of meat and improve food safety by applying phage ØCJ19 to foods of animal origin and could be the basis for establishing a safety management system for foods of animal origin.

Conflicts of Interest

The authors declare no potential conflict of interest.

Acknowledgments

This work was supported by research grants from CJ CheilJedang Institute of Biotechnology (Grant number CD-30-19-01-0002).

Author Contributions

Conceptualization: Kim GH, Kim JW, Yoon SS. Data curation: Kim GH, Chae JP, Yoon SS. Formal analysis: Kim GH, Yoon SS. Methodology: Kim GH, Kim J, Lee JS, Yoon SS. Software: Kim GH, Kim J, Yoon SS. Validation: Kim JW, Chae JP, Yoon SS. Investigation: Kim GH, Lee JS, Yoon SS. Writing - original draft: Kim GH, Yoon SS. Writing - review & editing: Kim GH, Kim JW, Kim J, Chae JP, Lee JS, Yoon SS.

Ethics Approval

This article does not require IRB/IACUC approval because there are no human and animal participants.

References

- Abedon ST, Herschler TD, Stopar D. 2001. Bacteriophage latent-period evolution as a response to resource availability. *Appl Environ Microb* 67:4233-4241.
- Abedon ST, Hyman P, Thomas C. 2003. Experimental examination of bacteriophage latent-period evolution as a response to bacterial availability. *Appl Environ Microb* 69:7499-7506.
- Al-Gallas N, Bahri O, Bouratbeen A, Haasen AB, Aissa RB. 2007. Etiology of acute diarrhea in children and adults in Tunis, Tunisia, with emphasis on diarrheagenic *Escherichia coli*: Prevalence, phenotyping, and molecular epidemiology. *Am J Trop Med Hyg* 77:571-582.
- Alves DR, Gaudion A, Bean JE, Esteban PP, Arnot TC, Harper DR, Kot W, Enright MC, Jenkins ATA. 2014. Combined use of bacteriophage K and a novel bacteriophage to reduce *Staphylococcus aureus* biofilm formation. *Appl Environ Microbiol* 80:6694-6703.
- Bai J, Kim YT, Ryu S, Lee JH. 2016. Biocontrol and rapid detection of food-borne pathogens using bacteriophages and endolysins. *Front Microbiol* 7:474.
- Bao H, Zhang P, Zhang H, Zhou Y, Zhang L, Wang R. 2015. Bio-control of *Salmonella enteritidis* in foods using

- bacteriophages. *Viruses* 7:4836-4853.
- Cao Z, Zhang J, Niu YD, Cui N, Ma Y, Cao F, Xu Y. 2015. Isolation and characterization of a "phiKMV-Like" bacteriophage and its therapeutic effect on mink hemorrhagic pneumonia. *PLOS ONE* 10:e0116571.
- Chang Y, Bai J, Lee JH, Ryu S. 2019. Mutation of a *Staphylococcus aureus* temperate bacteriophage to a virulent one and evaluation of its application. *Food Microbiol* 82:523-532.
- Cheng G, Hao H, Xie S, Wang X, Dai M, Huang L, Yuan Z. 2014. Antibiotic alternatives: The substitution of antibiotics in animal husbandry? *Front Microbiol* 5:217.
- De Souza GM, Neto ERDS, da Silva AM, de Souza Iacia MVM, Rodrigues MVP, Pereira VC, Winkelstroter LK. 2019. Comparative study Of genetic diversity, virulence genotype, biofilm formation and antimicrobial resistance of Uropathogenic *Escherichia coli* (UPEC) isolated from nosocomial and community acquired urinary tract infections. *Infect Drug Resist* 12:3595-3606.
- Endersen L, O'Mahony J, Hill C, Ross RP, McAuliffe O, Coffey A. 2014. Phage therapy in the food industry. *Annu Rev Food Sci Technol* 5:327-349.
- Fabian NJ, Mannion AJ, Feng Y, Madden CM, Fox JG. 2020. Intestinal colonization of genotoxic *Escherichia coli* strains encoding colibactin and cytotoxic necrotizing factor in small mammal pets. *Vet Microbiol* 240:108506.
- Gutiérrez D, Rodríguez-Rubio L, Fernández L, Martínez B, Rodríguez A, García P. 2017. Applicability of commercial phage-based products against *Listeria monocytogenes* for improvement of food safety in Spanish dry-cured ham and food contact surfaces. *Food Control* 73:1474-1482.
- Hesse S, Adhya S. 2019. Phage therapy in the twenty-first century: Facing the decline of the antibiotic era; is it finally time for the age of the phage? *Annu Rev Microbiol* 73:155-174.
- Jamalludeen N, Johnson RP, Friendship R, Kropinski AM, Lingohr EJ, Gyles CL. 2007. Isolation and characterization of nine bacteriophages that lyse O149 enterotoxigenic *Escherichia coli*. *Vet Microbiol* 124:47-57.
- Jang J, Hur HG, Sadowsky MJ, Byappanahalli MN, Yan T, Ishii S. 2017. Environmental *Escherichia coli*: Ecology and public health implications-a review. *J Appl Microbiol* 123:570-581.
- Kebriaei R, Lev K, Morrisette T, Stamper KC, Abdul-Mutakabbir JC, Lehman SM, Morales S, Rybak MJ. 2020. Bacteriophage-antibiotic combination strategy: An alternative against methicillin-resistant phenotypes of *Staphylococcus aureus*. *Antimicrob Agents Chemother* 64:e00461-20.
- Kim GH, Kim J, Kim KH, Lee JS, Lee NG, Lim TH, Yoon SS. 2019. Characterization and genomic analysis of novel bacteriophage Φ CS01 targeting *Cronobacter sakazakii*. *J Microbiol Biotechnol* 29:696-703.
- Kim J, Kim GH, Lee NG, Lee JS, Yoon SS. 2018. Whole-genome sequencing and genomic analysis of a virulent bacteriophage infecting *Bacillus cereus*. *Intervirology* 61:272-280.
- Laxminarayan R, Duse A, Wattal C, Zaidi AKM, Wertheim HFL, Sumpradit N, Vlieghe E, Hara GL, Gould IM, Goossens H, Greko C, D So A, Bigdeli M, Tomson G, Woodhouse W, Ombaka E, Peralta AQ, Qamar FN, Mir F, Kariuki S, Bhutta ZA, Coates A, Bergstrom R, Wright GD, Brown ED, Cars O. 2013. Antibiotic resistance- the need for global solutions. *Lancet Infect Dis* 13:1057-1098.
- Lee CY, Kim SJ, Park BC, Han JH. 2017. Effects of dietary supplementation of bacteriophages against enterotoxigenic *Escherichia coli* (ETEC) K88 on clinical symptoms of post-weaning pigs challenged with the ETEC pathogen. *J Anim Physiol Anim Nutr* 101:88-95.
- Lee HJ, Kim WI, Kwon YC, Cha KE, Kim M, Myung H. 2016. A Newly isolated bacteriophage, PBES 02, infecting

- Cronobacter sakazakii*. J Microbiol Biotechnol 26:1629-1635.
- Luppi A. 2017. Swine enteric colibacillosis: Diagnosis, therapy and antimicrobial resistance. Porcine Health Manag 3:16.
- Mayo MA, Haenni AL. 2006. Report from the 36th and the 37th meetings of the executive committee of the international committee on taxonomy of viruses. Arch Virol 151:1031-1037.
- Mohammed M, Cormican M. 2015. Whole genome sequencing provides possible explanations for the difference in phage susceptibility among two *Salmonella* Typhimurium phage types (DT8 and DT30) associated with a single foodborne outbreak. BMC Res Notes 8:728.
- O'Flynn G, Ross RP, Fitzgerald GF, Coffey A. 2004. Evaluation of a cocktail of three bacteriophages for biocontrol of *Escherichia coli* O157:H7. Appl Environ Microbiol 70:3417-3424.
- Pattabiraman V, Katz LS, Chen JC, McCullough AE, Trees E. 2018. Genome wide characterization of enterotoxigenic *Escherichia coli* serogroup O6 isolates from multiple outbreaks and sporadic infections from 1975–2016. PLOS ONE 13:e0208735.
- Peng Q, Yuan Y. 2018. Characterization of a newly isolated phage infecting pathogenic *Escherichia coli* and analysis of its mosaic structural genes. Sci Rep 8:8086.
- Romero-Calle D, Guimarães BR, Góes-Neto A, Billington C. 2019. Bacteriophages as alternatives to antibiotics in clinical care. Antibiotics (Basel) 8:138.
- Šimoliūnas E, Kaliniene L, Stasilo M, Truncaitė L, Zajančauskaitė A, Staniulis J, Nainys J, Kaupinis A, Valius M, Meškys R. 2014. Isolation and characterization of vB_ArS-ArV2-First *Arthrobacter* sp. infecting bacteriophage with completely sequenced genome. PLOS ONE 9:e111230.
- Wei C, Zhao X. 2018. Induction of viable but nonculturable *Escherichia coli* O157:H7 by low temperature and its resuscitation. Front Microbiol 9:2728.
- Yan X, Huang X, Ren J, Zou Z, Yang S, Ouyang J, Zeng W, Yang B, Xiao S, Huang L. 2009. Distribution of *Escherichia coli* F4 adhesion phenotypes in pigs of 15 Chinese and Western breeds and a White Duroc× Erhualian intercross. J Med Microbiol 58:1112-1117.
- Yang SC, Lin CH, Aljuffali IA, Fang JY. 2017. Current pathogenic *Escherichia coli* foodborne outbreak cases and therapy development. Arch Microbiol 199:811-825.
- Yoichi M, Abe M, Miyana K, Unno H, Tanji Y. 2005. Alteration of tail fiber protein gp38 enables T2 phage to infect *Escherichia coli* O157:H7. J Biotechnol 115:101-107.
- Yosef I, Goren MG, Globus R, Molshanski-Mor S, Qimron U. 2017. Extending the host range of bacteriophage particles for DNA transduction. Mol Cell 66:721-728.
- Zhou Y, Bao H, Zhang H, Wang R. 2015. Isolation and characterization of lytic phage vB_EcoM_JS09 against clinically isolated antibiotic-resistant avian pathogenic *Escherichia coli* and enterotoxigenic *Escherichia coli*. Intervirology 58:218-231.