



Published in final edited form as:

J Occup Environ Med. 2015 February ; 57(2): 202–209. doi:10.1097/JOM.0000000000000337.

Lung Cancer Risk Among Cooks When Accounting for Tobacco Smoking:

A Pooled Analysis of Case–Control Studies From Europe, Canada, New Zealand, and China

Carolina Bigert, MD, PhD, Per Gustavsson, MD, PhD, Kurt Straif, MD, PhD, Beate Pesch, PhD, Thomas Brüning, MD, PhD, Benjamin Kendzia, MSc, Joachim Schüz, PhD, Isabelle Stücker, PhD, Florence Guida, PharmD, Irene Brüske, MD, Heinz-Erich Wichmann, PhD, Angela C. Pesatori, MD, PhD, Maria Teresa Landi, MD, PhD, Neil Caporaso, MD, Lap Ah Tse, PhD, Ignatius Tak-sun Yu, PhD, Jack Siemiatycki, PhD, Javier Pintos, PhD, Franco Merletti, PhD, Dario Mirabelli, MD, Lorenzo Simonato, MD, Karl-Heinz Jöckel, PhD, Wolfgang Ahrens, PhD, Hermann Pohlmann, PhD, Adonina Tardón, PhD, David Zaridze, MD, PhD, John Field, PhD, Andrea ‘t Mannetje, PhD, Neil Pearce, PhD, John McLaughlin, PhD, Paul Demers, PhD, Neonila Szeszenia-Dabrowska, PhD, Jolanta Lissowska, PhD, Peter Rudnai, PhD, Eleonora Fabianova, MD, PhD, Rodica Stanescu Dumitru, PhD, Vladimir Bencko, MD, PhD, Lenka Foretova, MD, PhD, Vladimir Janout, PhD, Paolo Boffetta, MD, MPH, Francesco Forastiere, MD, Bas Bueno-de-Mesquita, MD, MPH, Susan Peters, PhD, Roel Vermeulen, PhD, Hans Kromhout, PhD, Ann C. Olsson, PhD

Institute of Environmental Medicine (Drs Bigert and Gustavsson), Karolinska Institutet, Stockholm, Sweden; International Agency for Research on Cancer (Drs Straif, Schüz, and Olsson), Lyon, France; Institute for Prevention and Occupational Medicine of the German Social Accident Insurance—Institute of the Ruhr-Universität Bochum (IPA) (Drs Pesch and Brüning, Mr Kendzia), Germany; Inserm, Centre for Research in Epidemiology and Population Health (CESP) (Drs Stücker and Guida), U1018, Environmental Epidemiology of Cancer Team, F-94807, Villejuif, France; Université Paris-Sud (Drs Stücker and Guida), UMRS 1018, F-94807, Villejuif, France; Institut für Epidemiologie I (Drs Brüske and Wichmann), Deutsches Forschungszentrum für Gesundheit und Umwelt, Neuherberg, Germany; Department of Clinical Sciences and Community Health (Dr Pesatori), Università degli Studi di Milano, Milan, Italy; National Cancer Institute (Drs Landi and Caporaso), Bethesda, MD; Division of Occupational and Environmental Health (Drs Tse and Yu), School of Public Health and Primary Care, The Chinese University of Hong Kong, China; Research Centre of University of Montréal Hospital Centre (Drs Siemiatycki and Pintos), University of Montréal, Canada; Cancer Epidemiology Unit (Drs Merletti and Mirabelli), Department of Medical Sciences, University of Turin, Italy; Department of Environmental Medicine and Public Health (Dr Simonato), University of Padua, Italy; Institute for Medical Informatics (Dr Jöckel), Biometry and Epidemiology, University of Duisburg-Essen,

Address correspondence to: Carolina Bigert, MD, PhD, Institute of Environmental Medicine, Karolinska Institutet, Solnavägen 4 10th Floor, SE-113 65, Stockholm, Sweden (carolina.bigert@ki.se).

The authors do not have any competing financial interests.

Study Approval: Ethical approvals for the original studies were obtained in accordance with legislation in each country, and for the SYNERGY project from the IARC Institutional Review Board Committee. The Regional Ethics Committee in Stockholm, Sweden, gave approval for the present analyses.

Essen, Germany; Bremen Institute for Prevention Research and Social Medicine (Drs Ahrens and Pohlabein), Bremen, Germany; CIBERESP (Dr Tardon), University of Oviedo, Spain; Russian Cancer Research Centre (Dr Zaridze), Moscow, Russia; Roy Castle Lung Cancer Research Programme, Cancer Research Centre (Dr Field), University of Liverpool, UK; Centre for Public Health Research (Drs Mannelje and Pearce), Massey University, Wellington, New Zealand; Occupational Cancer Research Centre (Drs McLaughlin and Demers), Toronto, Canada; The Nofer Institute of Occupational Medicine (Dr Szeszenia-Dabrowska), Lodz, Poland; The M Sklodowska-Curie Cancer Center and Institute of Oncology (Dr Lissowska), Warsaw, Poland; National Institute of Environmental Health (Dr Rudnai), Budapest, Hungary; Regional Authority of Public Health (Dr Fabianova), Banska Bystrica, Slovakia; Institute of Public Health (Dr Dumitru), Bucharest, Romania; Institute of Hygiene and Epidemiology (Dr Bencko), 1st Faculty of Medicine, Charles University, Prague, Czech Republic; Masaryk Memorial Cancer Institute (Dr Foretova), Brno, Czech Republic; Faculty of Medicine (Dr Janout), Palacky University, Olomouc, Czech Republic; The Tisch Cancer Institute and Institute for Translational Epidemiology (Dr Boffetta), Icahn School of Medicine at Mount Sinai, New York, NY; Department of Epidemiology (Dr Forastiere), ASL RomaE, Rome, Italy; The National Institute for Public Health and Environmental Protection (RIVM) (Dr Bueno-de-Mesquita), Bilthoven, the Netherlands; Institute for Risk Assessment Sciences (Drs Peters, Vermeulen, and Kromhout), Utrecht, the Netherlands; Occupational Respiratory Epidemiology (Dr Peters), School of Population Health, University of Western Australia, Perth, Australia

Abstract

Objectives: To investigate the risk of lung cancer among cooks, while controlling for smoking habits.

Methods: We used data from the SYNERGY project including pooled information on lifetime work histories and smoking habits from 16 case-control studies conducted in Europe, Canada, New Zealand, and China.

Results: Before adjustment for smoking, we observed an increased risk of lung cancer in male cooks, but not in female cooks. After adjusting, there was no increased risk and no significant exposure-response relationship. Nevertheless, subgroup analyses highlighted some possible excess risks of squamous cell carcinoma and small cell carcinoma in female cooks.

Conclusions: There is evidence that lung cancer risks among cooks may be confounded by smoking. After adjustment, cooks did not experience an increased risk of lung cancer overall. The subgroup analyses showing some excess risks among female cooks require cautious interpretation.

Cooks are exposed to a wide variety of compounds generated during cooking and frying, such as aerosols of cooking oil, combustion products, organic gaseous pollutants, and steam from the water content of the food. Emissions from high-temperature frying are classified as probably carcinogenic to humans (group 2A) by the International Agency for Research on Cancer, on the basis of limited evidence for lung cancer in humans and sufficient evidence in experimental animals.¹ Of particular concern in relation to carcinogenicity are polycyclic aromatic hydrocarbons (PAHs), aldehydes (eg, formaldehyde and acetaldehyde), heterocyclic amines, and other volatile compounds such as acrylamide and acrolein.¹⁻³ Cooking and frying also increase the concentrations of fine and ultrafine particles in the air.¹

The chemical composition of cooking emissions and exposure levels varies depending on the cooking oils used, the temperature, the kind of food cooked, and the method and style of cooking.¹ Frying on a gas stove may cause increased occupational exposure to some of the hazardous components in cooking fumes, compared with frying on an electric stove.^{4,5}

Several case-control studies of Chinese populations have demonstrated an exposure-response relationship between high-temperature frying and risk of lung cancer.⁶⁻⁹ There are also studies from other countries that indicate an increased risk of lung cancer among cooks, 10-15 whereas some studies do not.^{16,17} Many of these studies lack adequate information on individual smoking habits,¹⁴⁻¹⁷ and it is unknown whether the excess risk seen in many of the studies was caused by occupational exposure to cooking fumes, other occupational exposures, or by confounding from cigarette smoking. Only one study reported the prevalence of smoking among cooks, with a slightly larger proportion of regular cigarette smokers among male cooks than in the control population.¹²

The aim of this study was to investigate whether working as a cook is associated with an increased risk of lung cancer, while controlling for smoking using individual data on lifetime smoking habits, as well as for exposure to other occupational lung carcinogens.

METHODS

SYNERGY is a large pooled analysis of case-control studies on the joint effects of occupational carcinogens and smoking in the development of lung cancer. Detailed information about the SYNERGY project and included studies has been presented elsewhere,¹⁸ see also www.synergy.iarc.fr. We used the SYNERGY database including information on lifetime work histories and lifetime tobacco smoking habits from 16 case-control studies conducted in Europe (12 studies), Canada (two studies), New Zealand (one study), and China (one study). A general description of the studies included in the SYNERGY project is presented in Table 1. The data were collected in 16 countries between 1985 and 2010. The studies included are well-designed population or hospital-based case-control studies, and in one case a case-control study nested within a population cohort. In most studies, controls were frequency-matched to the cases regarding sex and age. The majority of interviews (87%) were conducted face-to-face with the subjects. The overall response rate was 82% among cases and 67% among controls. The study comprised 19,370 cases and 23,674 controls. Subjects providing incomplete information for calculating duration of jobs or cumulative smoking were omitted (472 cases and 521 controls), as well as subjects who never held a job during at least 1 year (175 cases and 200 controls), leaving 18,723 cases of lung cancer and 22,953 controls for analysis. Characteristics of the study subjects are presented in Table 2. Smoking was not more common among the cooks than among noncooks; among the controls, 63% of the cooks were current or former smokers compared with 68% among noncooks. Nevertheless, the number of pack-years in ever smokers was slightly higher among cooks; 29 years among cooks compared with 26 years in noncooks. Having ever been employed in an occupation with established lung cancer risk was slightly less common among cooks than among noncooks; among the controls, 5% of the cooks compared with 8% among noncooks ($P=0.060$).

Identification of Cooks by Job Titles

The occupational data were originally coded according to national classifications for most studies and were recoded to the International Standard Classification of Occupations (ISCO-68).³⁵ Cooks were identified from the ISCO-68 code (“5-31”). There were 1142 persons (670 men and 472 women) who had ever worked as a cook, among them 554 cases of lung cancer and 588 controls.

Statistical Analyses

Odds ratios (ORs) for lung cancer associated with work as a cook, and 95% confidence intervals (CIs) were estimated by unconditional logistic regression. The analyses were done separately for men and women. For all associations, three levels of adjustments were made; the first (OR1) adjusting for age group (younger than 45, 45 to 49, 50 to 54, 55 to 59, 60 to 64, 65 to 69, 70 to 74, and elder than 75 years) and study center; the second (OR2) additionally adjusting for cumulative tobacco smoking ($\log(\text{cigarette pack-years} + 1)$) and time-since-quit smoking cigarettes (current smokers, stopped smoking since 2 to 7 years, 8 to 15 years, 16 to 25 years, more than 26 years before interview/diagnosis, and never smokers). The pack-year variable was log-transformed because it better fitted the data. A third level of adjustment included adjusting for ever employment in an occupation with established lung cancer risk (“List A” job, yes/no). This list of occupations and industries was identified by Ahrens and Merletti in 1998 and updated by Mirabelli et al in 2001.^{36,37} Adjustment for “List A” job in the analyses did not influence the ORs; therefore, only OR1 and OR2 are displayed in the result tables.

Persons smoking one or more cigarettes per day for 1 or more years were coded as current smokers, including those who had stopped smoking within 2 years before diagnose/interview. Cigarette pack-years were calculated as: duration \times average intensity per day/20.

We repeated the analyses on lung cancer risk among cooks with restriction to never smokers, former smokers, and current smokers to explore potential residual confounding by smoking. We also analyzed the lung cancer risk among cooks by duration of work to investigate whether those with a longer duration of employment had a higher risk. The cutoffs for categories of work duration were based on the quartiles of the distribution of exposure duration among exposed controls (less than 4 years, 4 to 8 years, 9 to 22 years, more than 22 years). In addition, we stratified the analyses by the major histological subtypes of lung cancer (adenocarcinoma, squamous cell carcinoma, small cell carcinoma, and large cell carcinoma) and missing/mixed/unspecified cell type. Subjects who had never worked as a cook were the reference category in all analyses. Interaction with sex was assessed using the likelihood ratio test. *P* values for trend were obtained by including a continuous variable for duration (years) in the logistic regression model. The trend was calculated including both exposed and unexposed subjects.

Meta-analysis was used to explore extent of heterogeneity between the studies and study-specific ORs (both men and women, calculated with logistic regression, adjusted for age, sex, cigarette pack-years, and time since quitting smoking). Studies with less than five

exposed cases and five exposed controls were omitted from the meta-analysis, that is INCO-Hungary, INCO-Romania, MORGEN, PARIS, and ROME. The heterogeneity was assessed using a chi-squared test with the inverse of the variance as weights. The extent of inconsistency between OR estimates was assessed as a percentage (I^2).

All analyses were conducted using Stata v. 11.0 for Windows (StataCorp LP, College Station, TX), and the command “metan” was used for the meta-analyses.

RESULTS

Overall, we observed a statistically significantly increased risk of lung cancer in male cooks (OR1 = 1.27; 95% CI, 1.09 to 1.49) but not in female cooks (OR1 = 1.16; 95% CI, 0.96 to 1.40), before adjustment for smoking. After adjusting for smoking, there was no statistically significantly increased risk of lung cancer in cooks overall, neither for men nor for women (Table 3). The OR2 for lung cancer among male cooks was 0.98 (95% CI, 0.83 to 1.17) and among female cooks 1.06 (95% CI, 0.85 to 1.31). Testing interaction with sex showed $P=0.58$ for OR1 and $P=0.91$ for OR2. There was no evidence of a trend in lung cancer risk with increasing duration of work as a cook ($P=0.56$ for men [OR2] and $P=0.86$ for women [OR2]) (Table 3).

When we analyzed the results by cell types (Table 4), there were different patterns between men and women. Among men, none of the cell types was associated with work as a cook. Among women, two of the cell types, adenocarcinoma and large cell carcinoma, showed null or even inverse associations, whereas squamous cell (OR2 = 1.73; 95% CI, 1.22 to 2.45) and small cell carcinoma (OR2 = 1.48; 95% CI, 0.98 to 2.24) showed some evidence of associations, with the highest point estimates among long-term female cooks (Table 5).

Analyses restricted to current smokers showed a borderline significantly increased risk among female cooks (OR2 = 1.49; 95% CI, 1.03 to 2.17) but no increased risk among male cooks (OR2 = 0.93; 95% CI, 0.74 to 1.17) (Table 6). For female cooks who were current smokers we also observed a statistically significant trend in lung cancer risk with duration of employment, P for trend 0.011 (Table 7). Analyses restricted to never smokers showed no increased risk among cooks of either sex, although the numbers of male nonsmoking cooks were so small that the OR was not very informative (Table 6).

The study-specific ORs for cooks (men and women) are shown in Fig. 1. The AUT-Munich study (Germany) was the only single study with a statistically significantly elevated OR. We observed no significant heterogeneity in lung cancer risk among cooks across the studies ($I^2=0.0\%$; $P=0.94$).

DISCUSSION

We found no statistically significantly increased risk of lung cancer in cooks overall when accounting for smoking, neither for men nor for women, and there was no positive association between exposure duration and risk. Nevertheless, when analyzing separately by cell types, we found some different patterns by sex and cell type. Namely, while no cell type exhibited an increased risk for male cooks, there were some indications of increased risks of

squamous cell carcinoma, and small cell carcinoma, and a low risk of large cell carcinoma in female cooks. There was no excess risk when restricting the analyses to never smokers, or to former smokers, for either sex, or among male current smokers, but there was some indication of excess risk among female current smokers.

Several factors should be taken into account in the interpretation of the current findings. An advantage of the study is that it is large and covers occupational information and detailed smoking information for the whole lifetime, for almost 19,000 cases and 23,000 controls. It included 554 exposed cases, both men and women. Many of the previously performed case-control studies on lung cancer risk among cooks comprise few exposed cases and therefore give risk estimates with wide CIs, whereas the precision in this study is higher. Cooks were identified by occupational codes. Some of them may work with cold food preparation only (with less exposure to potential carcinogens from cooking and frying), but this is likely a small fraction. In a Swedish study among cooks and other restaurant workers, the fraction who worked with cold buffets was only around 10% of the total number of cooks and cold buffet managers.³⁸

In this study, employment in jobs known to entail increased lung cancer risk among the controls was only slightly less common among cooks compared with those who were never employed as a cook. Consequently, inclusion of this variable in the regression model did not change the risk estimates. The AUT-Munich study (Germany) was the only single study with a significantly elevated OR2 for ever working as a cook but had a low response rate among control subjects (41%), which may have resulted in selection bias if cooks were more likely than other control subjects to be nonrespondents.

Several previous studies found an excess risk of lung cancer among cooks.^{10–15} Among them, three case-control studies from British Columbia,¹⁰ Bombay,¹¹ and California¹² and one study based on hospital and cancer registration records and questionnaires in the United Kingdom¹³ were able to control for smoking habits. The study in British Columbia did not show an increased lung cancer risk in cooks while including all histological subtypes, but only for large cell lung cancer where the precision was low with only eight exposed (chef or cook) cases. The study in Bombay also faced low statistical power with only nine exposed (cook/helper in kitchen) cases. In the Californian study, the power was better with 23 exposed (cooks) cases. The study in the United Kingdom showed an increased risk of bronchial carcinoma in cooks (RR = 2.5; 95% CI, 1.2 to 5.1). Two studies that were not able to adjust for smoking were reported by Coggon et al¹⁴ and Pukkala et al¹⁵; these showed an increased mortality rate from lung cancer in a cohort of male cooks who had retired from the Army Catering Corps in the United Kingdom, and an increased risk of lung cancer among male and female cooks and stewards in the Nordic countries (based on information from censuses and registration of incident cases in Denmark, Finland, Iceland, Norway, and Sweden). The study by Pukkala et al¹⁵ also analyzed the risk for histological subtypes of lung cancer, which showed an increased standardized incidence ratio for adenocarcinoma and squamous cell carcinoma in male cooks and stewards and an increased risk of adenocarcinoma and small cell carcinoma, but not squamous cell carcinoma, in female cooks and stewards. Two earlier studies found no excess risk of lung cancer among cooks, one cohort study from Norway,¹⁶ and one study based on census and register information in

England and Wales,¹⁷ although these studies lacked information on individual smoking habits. All, except the study by Pukkala et al,¹⁵ have in common that they only included men. None of the studies included exposure measurements.

In this study, we showed an increased risk of the histological subtype squamous cell carcinoma of the lung among female cooks and an almost significantly increased risk of small cell carcinoma. The reason why the effect was seen only in women and not in men is unclear. Among female cooks we also observed a statistically significant trend in risk of squamous cell carcinoma with longer duration of employment. This excess was based on a secondary subgroup analysis and must be interpreted with caution. The two previous studies of histological subtypes of lung cancer among cooks do not support our results. One showed no excess risk of squamous cell carcinoma among cooks (only men were included),¹⁰ and the other showed an excess risk of squamous cell carcinoma in male but not in female cooks.¹⁵

Cooking fumes are suspected to cause an increased risk of lung cancer in Chinese women involved in household cooking, where exposure–response relationships were shown between frequency and duration of high-temperature frying and increased risk of lung cancer.^{6–9} Thus, an important body of evidence, a large part of which comes from studies conducted in China, seems to support an increased lung cancer risk due to exposure from cooking activities. There are major differences in cooking practices between Asian and Western countries, including type of food cooked, the method of cooking, type of cooking oil used, ventilation in the kitchen, and the type of fuel used. Burning of biomass or coke in poor ventilated kitchens causes a high exposure to carcinogenic PAHs.¹ In this pooled study, the only study included from China (Hong Kong) did not show an increased lung cancer risk among cooks (Fig. 1).

Polycyclic aromatic hydrocarbons and higher aldehydes have been detected in the breathing zone of cooks during frying.^{5,39} Personal measurements of the levels of PAHs and higher aldehydes were performed in three restaurants in Norway during the four peak hours regarding the number of customers.³⁹ Naphthalene was the dominant PAH in cooking fumes and was detected within the range of 0.05 to 0.27 $\mu\text{g}/\text{m}^3$ air, whereas the levels of mutagenic aldehydes were between 1.03 and 17.7 $\mu\text{g}/\text{m}^3$ air.

Smoking is a risk factor for all histological types of lung cancer. The epidemiological evidence relating smoking to lung cancer histological types demonstrates that the association is strongest for small and squamous cell carcinoma, intermediate for large cell carcinoma, and weaker but still very strong for adenocarcinoma, and this holds in both sexes.⁴⁰ The excess risk of lung cancer overall among female cooks when analyses were restricted to current smokers, as well as an exposure–response relationship with work duration, and the fact that smoking is associated particularly with the two histological subtypes of lung cancer for which we noted an increased risk (squamous cell carcinoma) and possibly increased risk (small cell carcinoma) among women, indicates the possibility of a joint effect with smoking, as well as of residual confounding from smoking or confounding because of environmental tobacco smoke. There is also a possibility that women may be more sensitive than men to carcinogens in cooking fumes or that the exposure situation in the kitchen may

differ between men and women, although this is quite speculative. It could also be a chance finding as a result of multiple testing. Nevertheless, emissions formed while cooking and frying at high temperatures are known to contain carcinogens such as PAHs and mutagenic aldehydes. It seems important to continue the efforts to reduce the exposure to these emissions as much as possible, for instance by the use of adequate local exhaust ventilation. Nevertheless, the most important measure for preventing lung cancer in cooks would probably be reduction of smoking.

CONCLUSIONS

We did not detect an increased risk of lung cancer overall among male or female cooks, when lifetime history of tobacco smoking was taken into account. Subgroup analyses highlighted some possible excess risks of squamous cell carcinoma and small cell carcinoma in female cooks. There is evidence that lung cancer risks among cooks may be confounded by smoking.

ACKNOWLEDGMENT

The authors thank Mrs Véronique Benhaim-Luzon for pooling the data.

This study was funded by the AFA Insurance in Sweden. The AFA Insurance is owned by Sweden's labor market parties: the Confederation of Swedish Enterprise, the Swedish Trade Union Confederation, and the Council for Negotiation and Co-operation. The SYNERGY project is funded by the German Social Accident Insurance (DGUV). The original studies were funded by a list of agencies including the Canadian Institutes for Health Research and Guzzo-SRC Chair in Environment and Cancer, the National Cancer Institute of Canada with funds provided by the Canadian Cancer Society and Cancer Care Ontario; the French agency of health security (ANSES), the Fondation de France, the French National Research Agency (ANR), the National Institute of Cancer (INCA), the Fondation for Medical Research (FRM), the French Institute for Public Health Surveillance (InVS), the Health Ministry (DGS), the Organization for the Research on Cancer (ARC), and the French Ministry of work, solidarity and public function (DGT). In Germany, the studies were funded by the Federal Ministry of Education, Science, Research, and Technology grant no. and the Federal Ministry of Science and the Ministry of Labour and Social Affairs. The INCO study was supported by a grant from the European Commission's INCO-COPERNICUS program, a grant from the Polish State Committee for Scientific Research grant and the Roy Castle Foundation as part of the Liverpool Lung Project. The EAGLE study was funded by the Intramural Research Program of the National Institutes of Health, National Cancer Institute, Division of Cancer Epidemiology and Genetics, Bethesda, MD, USA; the Environmental Epidemiology Program of the Lombardy Region, Italy; and the Istituto Nazionale per l'Assicurazione contro gli Infortuni sul Lavoro, Rome, Italy. The TURIN study was supported by the Italian Association for Cancer Research, Region Piedmont, Compagnia di San Paolo. The study in Rome was conducted with a partial support from the European Union Nuclear Fission Safety Program and from the Lazio Region. The MORGEN study was supported by the Dutch Ministry of Health, Welfare & Sports, National Institute of Public Health & the Environment, and the Europe Against Cancer Program. The CAPUA study was supported by the Instituto Universitario de Oncología, Universidad de Oviedo, Asturias, the Fondo de Investigación Sanitaria (FIS), and the Ciber de Epidemiología y Salud Pública (CIBERESP), Spain. The Hong Kong study was supported by a grant from the Research Grants Council of the Hong Kong Special Administrative Region, China. The OCANZ study was funded by the Health Research Council of New Zealand, the New Zealand Department of Labour, Lottery Health Research, and by the Cancer Society of New Zealand. The Swedish study LUCAS was supported by the Swedish Council for Work Life Research and the Swedish EPA.

REFERENCES

1. IARC Working Group on the Evaluation of Carcinogenic Risks to Humans. Household use of solid fuels and high-temperature frying In: IARC Monographs on the Evaluation of Carcinogenic Risks to Humans. Vol. 95 Lyon, France: World Health Organization International Agency for Research on Cancer; 2010:1–430. [PubMed: 20701241]
2. Sjaastad AK, Svendsen K. Exposure to mutagenic aldehydes and particulate matter during panfrying of beefsteak with margarine, rapeseed oil, olive oil or soybean oil. *Ann Occup Hyg.* 2008;52:739–745. [PubMed: 18977847]

3. Chen Y, Ho KF, Ho SS, et al. Gaseous and particulate polycyclic aromatic hydrocarbons (PAHs) emissions from commercial restaurants in Hong Kong. *J Environ Monit*. 2007;9:1402–1409. [PubMed: 18049780]
4. Dennekamp M, Howarth S, Dick CA, Cherrie JW, Donaldson K, Seaton A. Ultrafine particles and nitrogen oxides generated by gas and electric cooking. *Occup Environ Med*. 2001;58:511–516. [PubMed: 11452045]
5. Sjaastad AK, Jorgensen RB, Svendsen K. Exposure to polycyclic aromatic hydrocarbons (PAHs), mutagenic aldehydes and particulate matter during pan frying of beefsteak. *Occup Environ Med*. 2010;67:228–232. [PubMed: 20164502]
6. Gao YT, Blot WJ, Zheng W, et al. Lung cancer among Chinese women. *Int J Cancer*. 1987;40:604–609. [PubMed: 2824385]
7. Metayer C, Wang Z, Kleinerman RA, et al. Cooking oil fumes and risk of lung cancer in women in rural Gansu, China. *Lung Cancer*. 2002;35: 111–117. [PubMed: 11804682]
8. Yu IT, Chiu YL, Au JS, Wong TW, Tang JL. Dose-response relationship between cooking fumes exposures and lung cancer among Chinese nonsmoking women. *Cancer Res*. 2006;66:4961–4967. [PubMed: 16651454]
9. Zhong L, Goldberg MS, Gao YT, Jin F. Lung cancer and indoor air pollution arising from Chinese-style cooking among nonsmoking women living in Shanghai, China. *Epidemiology*. 1999;10:488–494. [PubMed: 10468420]
10. Yenugadhati N, Birkett NJ, Momoli F, Krewski D. Occupations and lung cancer: a population-based case-control study in British Columbia. *J Toxicol Environ Health A*. 2009;72:658–675. [PubMed: 19308851]
11. Notani PN, Shah P, Jayant K, Balakrishnan V. Occupation and cancers of the lung and bladder: a case-control study in Bombay. *Int J Epidemiol*. 1993;22:185–191. [PubMed: 8505172]
12. Dunn JE Jr, Linden G, Breslow L. Lung cancer mortality experience of men in certain occupations in California. *Am J Public Health Nations Health*. 1960;50:1475–1487. [PubMed: 13725049]
13. Coggon D, Pannett B, Osmond C, Acheson ED. A survey of cancer and occupation in young and middle aged men. I. Cancers of the respiratory tract. *Br J Ind Med*. 1986;43:332–338. [PubMed: 3707871]
14. Coggon D, Wield G. Mortality of farm cooks. *Scand J Work Environ Health*. 1993;19:85–88. [PubMed: 8316783]
15. Pukkala E, Martinsen JI, Lyng E, et al. Occupation and cancer—follow-up of 15 million people in five Nordic countries. *Acta Oncol*. 2009;48: 646–790. [PubMed: 19925375]
16. Kjaerheim K, Andersen A. Incidence of cancer among male waiters and cooks: two Norwegian cohorts. *Cancer Causes Control*. 1993;4:419–426. [PubMed: 8218873]
17. Coggon D, Wield G. Mortality of butchers and cooks identified from the 1961 census of England and Wales. *Occup Environ Med*. 1995;52:157–159. [PubMed: 7735386]
18. Olsson AC, Gustavsson P, Kromhout H, et al. Exposure to diesel motor exhaust and lung cancer risk in a pooled analysis from case-control studies in Europe and Canada. *Am J Respir Crit Care Med*. 2011;183:941–948. [PubMed: 21037020]
19. Brüske-Hohlfeld I, Mohner M, Pohlabein H, et al. Occupational lung cancer risk for men in Germany: results from a pooled case-control study. *Am J Epidemiol*. 2000;151:384–395. [PubMed: 10695597]
20. Jöckel KH, Ahrens W, Jahn I, Pohlabein H, Bolm-Audorff U. Occupational risk factors for lung cancer: a case-control study in West Germany. *Int J Epidemiol*. 1998;27:549–560. [PubMed: 9758106]
21. Consonni D, De Matteis S, Lubin JH, et al. Lung cancer and occupation in a population-based case-control study. *Am J Epidemiol*. 2010;171:323–333. [PubMed: 20047975]
22. Richiardi L, Boffetta P, Simonato L, et al. Occupational risk factors for lung cancer in men and women: a population-based case-control study in Italy. *Cancer Causes Control*. 2004;15:285–294. [PubMed: 15090723]
23. Fortes C, Forastiere F, Farchi S, et al. The protective effect of the Mediterranean diet on lung cancer. *Nutr Cancer*. 2003;46:30–37. [PubMed: 12925301]

24. Stucker I, Hirvonen A, de Waziers I, et al. Genetic polymorphisms of glutathione S-transferases as modulators of lung cancer susceptibility. *Carcinogenesis*. 2002;23:1475–1481. [PubMed: 12189190]
25. Kzama R, Babron MC, Gaborieau V, et al. Lung cancer and DNA repair genes: multilevel association analysis from the International Lung Cancer Consortium. *Carcinogenesis*. 2012;33:1059–1064. [PubMed: 22382497]
26. Guida F, Papadopoulou A, Menvielle G, et al. Risk of lung cancer and occupational history: results of a French population-based case-control study, the ICARE study. *J Occup Environ Med*. 2011;53:1068–1077. [PubMed: 21866050]
27. Lopez-Cima MF, Gonzalez-Arriaga P, Garcia-Castro L, et al. Polymorphisms in XPC, XPD, XRCC1, and XRCC3 DNA repair genes and lung cancer risk in a population of northern Spain. *BMC Cancer*. 2007;7:162. [PubMed: 17705814]
28. Riboli E, Kaaks R. The EPIC Project: rationale and study design. European Prospective Investigation into Cancer and Nutrition. *Int J Epidemiol*. 1997;26(suppl 1):S6–S14. [PubMed: 9126529]
29. Scelo G, Constantinescu V, Csiki I, et al. Occupational exposure to vinyl chloride, acrylonitrile and styrene and lung cancer risk (Europe). *Cancer Causes Control*. 2004;15:445–452. [PubMed: 15286464]
30. Gustavsson P, Jakobsson R, Nyberg F, Pershagen G, Jarup L, Scheele P. Occupational exposure and lung cancer risk: a population-based case-referent study in Sweden. *Am J Epidemiol*. 2000;152:32–40. [PubMed: 10901327]
31. Corbin M, McLean D, Mannetje A, et al. Lung cancer and occupation: a New Zealand cancer registry-based case-control study. *Am J Ind Med*. 2011;54: 89–101. [PubMed: 20957667]
32. Ramanakumar AV, Parent ME, Siemiatycki J. Risk of lung cancer from residential heating and cooking fuels in Montreal, Canada. *Am J Epidemiol*. 2007;165:634–642. [PubMed: 17189590]
33. Brenner DR, Boffetta P, Duell EJ, et al. Previous lung diseases and lung cancer risk: a pooled analysis from the International Lung Cancer Consortium. *Am J Epidemiol*. 2012;176:573–585. [PubMed: 22986146]
34. Tse LA, Yu IT, Qiu H, Au JS, Wang XR. Occupational risks and lung cancer burden for Chinese men: a population-based case-referent study. *Cancer Causes Control*. 2012;23:121–131. [PubMed: 22037909]
35. International Labour Office. *International Standard Classification of Occupations*. 2nd ed. Geneva, Switzerland: International Labour Office; 1968.
36. Ahrens W, Merletti F. A standard tool for the analysis of occupational lung cancer in epidemiologic studies. *Int J Occup Environ Health*. 1998;4:236–240. [PubMed: 9876632]
37. Mirabelli D, Chiusolo M, Calisti R, et al. Database of occupations and industrial activities that involve the risk of pulmonary tumors [in Italian]. *Epidemiol Prev*. 2001;25:215–221. [PubMed: 11789462]
38. Bigert C, Lonn M, Feychting M, Sjogren B, Lewne M, Gustavsson P. Incidence of myocardial infarction among cooks and other restaurant workers in Sweden 1987–2005. *Scand J Work Environ Health*. 2013;39:204–211. [PubMed: 23124319]
39. Sjaastad AK, Svendsen K. Exposure to polycyclic aromatic hydrocarbons (PAHs), mutagenic aldehydes, and particulate matter in Norwegian a la carte restaurants. *Ann Occup Hyg*. 2009;53:723–729. [PubMed: 19759173]
40. Lee PN, Forey BA, Coombs KJ. Systematic review with meta-analysis of the epidemiological evidence in the 1900s relating smoking to lung cancer. *BMC Cancer*. 2012;12:385. [PubMed: 22943444]

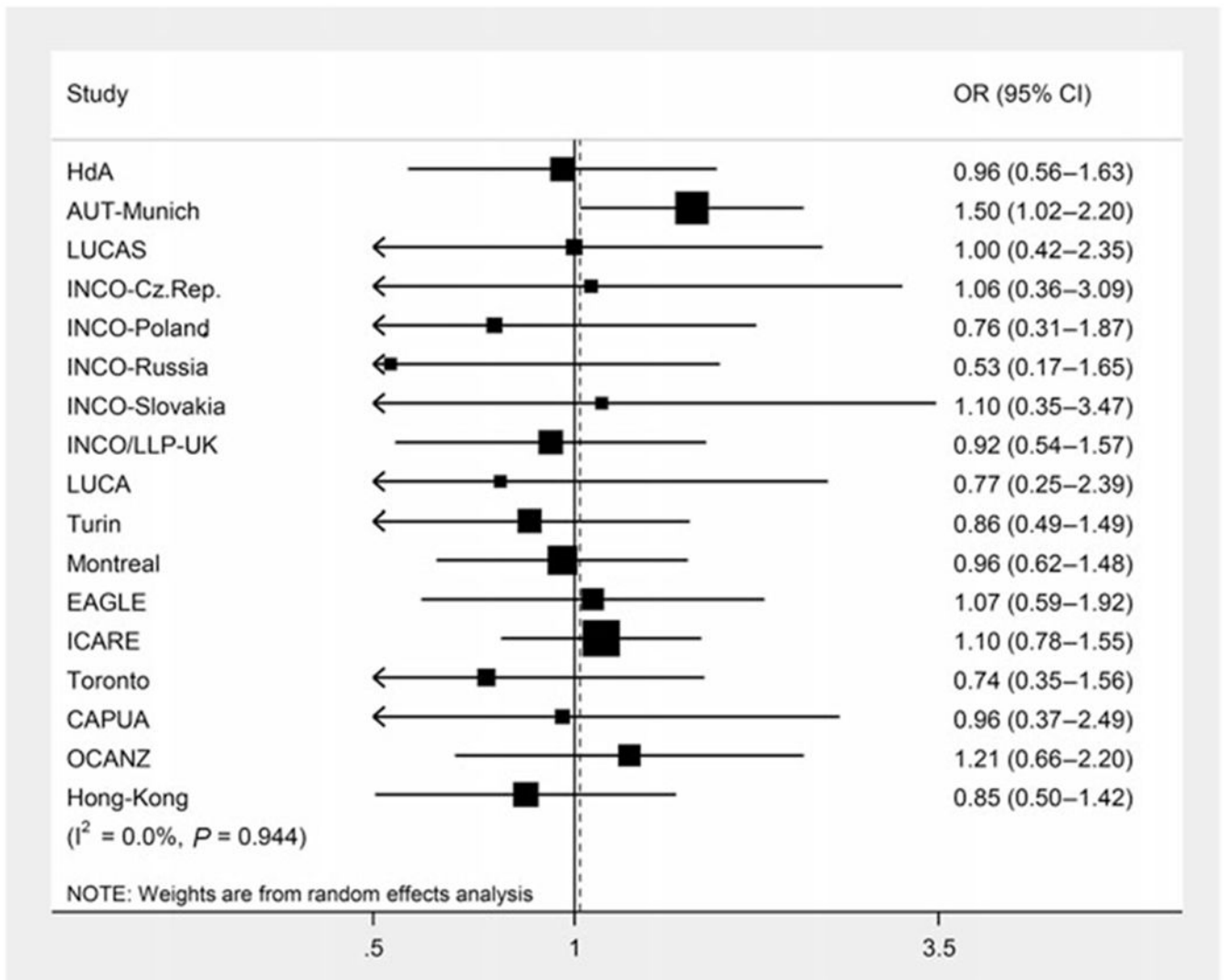


FIGURE 1.

The study-specific ORs for cooks (men and women), adjusted for age, sex, cigarette pack-years, and time since quitting smoking. OR, odds ratio; CI, confidence interval.

TABLE 1.

Description of the Studies Included in SYNERGY, 1985 to 2010

First Author, Year (Reference No.)	Study (Short Names)	Country	Data Collection	Cases		Controls		Data Source	Interviewee
				No.	Response Rate (%)	No.	Response Rate (%)		
Bruske-Hohfeld (2000) ¹⁹	AUT-MUNICH	Germany	1990–1995	3,180	77	3,249	41	I	S
Jöckel (1998) ²⁰	HdA	Germany	1988–1993	1,004	69	1,004	68	I	S
Consonni (2010) ²¹	EAGLE	Italy	2002–2005	1,943	87	2,116	72	I	S
Richiardi (2004) ²²	TURIN/VENETO	Italy	1990–1994	1,132	79	1,553	80	I	S
Fortes (2003) ²³	ROME	Italy	1993–1996	347	74	365	63	I	S
Stücker, 2002 ²⁴	LUCA	France	1989–1992	309	98	302	98	I	S
Kazma (2012) ²⁵	PARIS	France	1988–1992	173	95	234	95	I	S
Guida (2011) ²⁶	ICARE	France	2001–2007	2,926	87	3,555	81	I	S and NOK
Lopez-Cima (2007) ²⁷	CAPUA	Spain	2000–2010	875	91	838	96	I	S
Riboli (1997) ²⁸	MORGEN*	Netherlands	1993–1997	71	N/A	202	N/A	Q	S
Scelo (2004) ²⁹	INCO	Czech Republic	1999–2002	304	94	453	80	I	S
Scelo (2004) ²⁹	INCO	Hungary	1998–2001	402	90	315	100	I	S
Scelo (2004) ²⁹	INCO	Poland	1998–2002	800	88	841	88	I	S
Scelo (2004) ²⁹	INCO	Slovakia	1998–2002	346	90	285	84	I	S
Scelo (2004) ²⁹	INCO	Romania	1998–2002	181	90	228	99	I	S
Scelo (2004) ²⁹	INCO	Russia	1998–2001	600	96	580	90	I	S
Scelo (2004) ²⁹	INCO-LLP	United Kingdom	1998–2005	442	78	918	84	I	S
Gustavsson (2000) ³⁰	LUCAS	Sweden	1985–1990	1,042	87	2,356	85	Q	S and NOK
Corbin (2011) ³¹	OCANZ	New Zealand	2003–2009	457	53	792	48	I and T	S and NOK
Ramanakumar (2007) ³²	MONTREAL	Canada	1996–2002	1,203	85	1,509	69	I and T	S and NOK
Brenner (2012) ³³	TORONTO	Canada	1997–2002	425	62	910	71	I and T	S
Tse (2012) ³⁴	HONG KONG	China	2003–2007	1,208	96	1,069	48	I and T	S and NOK
Overall			1985–2010	19,370	82	23,674	67		

AUT-Munich, Arbeit und Technik; CAPUA, Cancer de Pulmon en Asturias; EAGLE, Environment and Genetics in Lung cancer Etiology; H, control subjects enrolled from hospitals; HdA, Humanisierung des Arbeitslebens; HONG KONG, male lung cancer, occupational exposures and smoking—a case-control study in Hong Kong; I, interview face to face; ICARE, Investigations Cancers Respiratoires et Environnement; INCO, INCO Copernicus IARC multicenter case-control study of occupational, environmental and lung cancer in Central and Eastern Europe; LLP, Liverpool Lung Project; LUCA, Lung

Author Manuscript

Author Manuscript

Author Manuscript

Author Manuscript

cancer in France; LUCAS, Lung cancer in Stockholm; MONTREAL, Montreal case-control study of environmental causes of lung cancer; MORGEN, Monitoring van Risicofactoren en Gezondheid in Nederland; N/A, not applicable; NOK, next-of-kin, for example, husband or wife of the study participant; OCANZ, Occupational Cancer in New Zealand; P, control subjects enrolled from the general population; PARIS, Lung cancer study in Paris; Q, self-administered questionnaire; ROME, Rome lung cancer case-control study; S, study participant; T, interview over the phone; TORONTO, Toronto lung cancer (case-control) study; TURIN/VENETO, population-based case-control study of lung cancer in the city of Turin and in the Eastern part of Veneto Region.

* Nested case-control study.

TABLE 2.

Characteristics of Study Subjects Included in Analyses

Characteristics	Cooks		Noncooks	
	Cases No. (%)	Controls No. (%)	Cases No. (%)	Controls No. (%)
<i>N</i> (%)	554 (49)	588 (51)	18,169 (45)	22,365 (55)
Sex				
Men (%)	340 (61)	330 (56)	14,899 (82)	17,804 (80)
Women (%)	214 (39)	258 (44)	3,270 (18)	4,561 (20)
Study acronym and country				
AUT-MUNICH (Germany)	95	65	3,073	3,172
HdA (Germany)	37	33	966	967
EAGLE (Italy)	34	26	1,846	2,034
TURIN/VENETO (Italy)	30	33	1,070	1,453
ROME (Italy)	3	10	321	312
LUCA (France)	8	8	289	286
PARIS (France)	2	5	166	221
ICARE (France)	98	104	2,719	3,384
CAPUA (Spain)	13	14	696	652
MORGEN (the Netherlands)	1	1	63	185
INCO Czech Republic	8	13	295	438
INCO Hungary	0	1	389	302
INCO Poland	13	12	771	815
INCO Slovakia	10	7	333	278
INCO Romania	1	2	173	215
INCO Russia	5	10	594	569
INCO-LLP United Kingdom	27	55	413	862
LUCAS (Sweden)	9	21	992	2,256
OCANZ (New Zealand)	37	35	397	730
MONTREAL (Canada)	57	62	1,082	1,400
TORONTO (Canada)	12	37	381	825
HONG KONG (China)	54	34	1,140	1,009

Characteristics	Cooks		Noncooks	
	Cases No. (%)	Controls No. (%)	Cases No. (%)	Controls No. (%)
Age group (yrs)				
<45	40	71	741	1,383
45-49	49	39	1,108	1,388
50-54	70	59	1,885	2,217
55-59	58	74	2,832	3,317
60-64	106	87	3,430	3,979
65-69	114	118	3,762	4,713
70-74	94	107	3,180	4,140
75	23	33	1,231	1,228
Smoking status				
Current smoker (%)	367 (66)	170 (29)	11,169 (61)	6,203 (28)
Former smoker (%)	141 (25)	201 (34)	5,693 (31)	8,881 (40)
Never smoker (%)	46 (8)	217 (37)	1,306 (7)	7,281 (32)
Pack-years in ever smokers (SD)	44 (29)	29 (29)	42 (28)	26 (24)
Time since quitting smoking among former smokers in years (SD)	11 (10)	19 (12)	13 (10)	20 (12)
„List A” job (occupation with known lung cancer risk)				
Ever (%)	46 (8)	32 (5)	2,179 (12)	1,679 (8)
Never (%)	508 (92)	556 (95)	15,990 (88)	20,686 (92)

TABLE 3.
Lung Cancer OR Among Cooks and Duration of Employment, With and Without Adjustment for Smoking

Employment	Cases/Controls	OR1	95% CI	OR2	95% CI
Men					
Never	14,899/17,804	1.00		1.00	
Ever	340/330	1.27	1.09–1.49	0.98	0.83–1.17
<4 yrs	77/88	1.11	0.81–1.52	0.87	0.61–1.22
4–8 yrs	73/61	1.61	1.14–2.27	1.23	0.83–1.81
9–22 yrs	81/74	1.34	0.97–1.85	0.97	0.68–1.40
>22 yrs	107/106	1.17	0.89–1.53	0.93	0.68–1.28
Duration (cont.)	338/329	1.01	1.00–1.01	1.00	1.00–1.01
Test for trend, <i>P</i> value		0.11		0.56	
Women					
Never	3,270/4,561	1.00		1.00	
Ever	214/258	1.16	0.96–1.40	1.06	0.85–1.31
<4 yrs	56/65	1.21	0.84–1.75	1.04	0.69–1.57
4–8 yrs	72/90	1.09	0.80–1.50	0.99	0.69–1.42
9–22 yrs	60/71	1.23	0.87–1.75	1.17	0.79–1.74
>22 yrs	24/32	0.99	0.58–1.70	0.98	0.54–1.79
Duration (cont.)	212/258	1.00	0.99–1.02	1.00	0.99–1.02
Test for trend, <i>P</i> value		0.70		0.86	

CI, confidence interval; OR, odds ratio.

OR1: Adjusted for study and age.

OR2: Adjusted for study, age, tobacco pack-years, and time since quitting smoking.

Lung Cancer OR Among Cooks Stratified by Histological Subtype of Lung Cancer, With and Without Adjustment for Smoking

TABLE 4.

Histology	Unexposed Cases/Controls	Exposed Cases/Controls	ORI	95% CI	OR2	95% CI
Men						
Adenocarcinoma	3,832/17,804	91/330	1.21	0.95–1.53	0.92	0.71–1.19
Squamous cell carcinoma	6,117/17,804	141/330	1.39	1.14–1.71	1.03	0.82–1.29
Small cell carcinoma	2,320/17,804	53/330	1.35	1.00–1.82	1.04	0.76–1.44
Large cell carcinoma	641/17,804	12/330	0.94	0.52–1.70	0.71	0.39–1.30
Missing/mixed/unspecified cell type	1,989/17,804	43/330	1.15	0.83–1.61	0.86	0.60–1.23
Women						
Adenocarcinoma	1,425/4,561	79/258	0.99	0.76–1.29	0.94	0.71–1.25
Squamous cell carcinoma	640/4,561	59/258	1.63	1.20–2.21	1.73	1.22–2.45
Small cell carcinoma	516/4,561	43/258	1.35	0.96–1.92	1.48	0.98–2.24
Large cell carcinoma	182/4,561	5/258	0.49	0.20–1.21	0.51	0.20–1.32
Missing/mixed/unspecified cell type	507/4,561	28/258	1.04	0.69–1.56	0.98	0.64–1.50

CI, confidence interval; OR, odds ratio.

ORI Adjusted for study and age.

OR2 Adjusted for study, age, tobacco pack-years, and time since quitting smoking.

Squamous Cell Carcinoma OR by Duration of Work Among Female Cooks, With and Without Adjustment for Smoking

TABLE 5.

Employment	Cases/Controls	OR1	95% CI	OR2	95% CI
Never	642/4,561	1.00		1.00	
<4 yrs	10/65	1.16	0.58–2.32	0.93	0.43–2.03
4–8 yrs	16/90	1.25	0.80–1.50	1.33	0.71–2.49
9–22 yrs	23/71	2.51	1.54–4.11	3.02	1.70–5.38
>22 yrs	8/32	1.30	0.58–2.90	1.88	0.78–4.55
Duration (cont.)	57/258	1.02	1.00–1.04	1.03	1.01–1.05
Test for trend, <i>P</i> value		0.027		0.003	

CI, confidence interval; OR, odds ratio.

OR1 Adjusted for study and age.

OR2 Adjusted for study, age, tobacco pack-years, and time since quitting smoking.

Lung Cancer OR Among Cooks Stratified by Smoking Status, With and Without Adjustment for Tobacco Pack Years and Time Since Quitting Smoking

TABLE 6.

Smoking Status	Unexposed Cases/Controls	Exposed Cases/Controls	OR1	95% CI	OR2	95% CI
Men						
Never	454/4,617	9/57	1.29	0.62–2.68		
Former	5,002/7,890	104/149	1.20	0.92–1.55	1.05	0.79–1.39
Current	9,442/5,297	227/124	0.99	0.79–1.24	0.93	0.74–1.17
Women						
Never	852/2,664	37/160	0.70	0.48–1.02		
Former	691/991	37/52	0.96	0.61–1.50	1.00	0.61–1.63
Current	1,727/906	140/46	1.58	1.11–2.27	1.49	1.03–2.17

CI, confidence interval; OR, odds ratio.

OR1 Adjusted for study and age.

OR2 Adjusted for study, age, tobacco pack-years (for current and former smokers), and time since quitting smoking (for former smokers).

Lung Cancer OR by Duration of Work Among Female Cooks Who Are Current Smokers, With and Without Adjustment for Tobacco Pack Years

TABLE 7.

Employment	Cases/Controls	OR1	95% CI	OR2	95% CI
Never	1,728/906	1.00		1.00	
< 4 yrs	34/18	0.94	0.51–1.72	0.96	0.50–1.84
4–8 yrs	50/18	1.38	0.79–2.43	1.18	0.66–2.13
9–22 yrs	39/8	2.83	1.29–6.22	2.70	1.21–6.04
>22 yrs	16/2	4.21	0.93–18.99	4.05	0.84–19.52
Duration (cont.)	139/46	1.05	1.02–1.09	1.05	1.01–1.09
Test for trend, <i>P</i> value		0.004		0.011	

CI, confidence interval; OR, odds ratio.

OR1 Adjusted for study and age.

OR2 Adjusted for study, age and tobacco pack-years.