




## RESEARCH ARTICLE

# Independent accretion of TIM22 complex subunits in the animal and fungal lineages [version 1; peer review: 2 approved]

Sergio A. Muñoz-Gómez, Shannon N. Snyder\*, Samantha J. Montoya\*, Jeremy G. Wideman 

Biodesign Center for Mechanisms of Evolution, School of Life Sciences, Arizona State University, Tempe, AZ, 85287, USA

\* Equal contributors

**V1** First published: 28 Aug 2020, 9:1060  
<https://doi.org/10.12688/f1000research.25904.1>  
 Latest published: 28 Aug 2020, 9:1060  
<https://doi.org/10.12688/f1000research.25904.1>

## Abstract

**Background:** The mitochondrial protein import complexes arose early in eukaryogenesis. Most of the components of the protein import pathways predate the last eukaryotic common ancestor. For example, the carrier-insertase TIM22 complex comprises the widely conserved Tim22 channel core. However, the auxiliary components of fungal and animal TIM22 complexes are exceptions to this ancient conservation.

**Methods:** Using comparative genomics and phylogenetic approaches, we identified precisely when each TIM22 accretion occurred.

**Results:** In animals, we demonstrate that Tim29 and Tim10b arose early in the holozoan lineage. Tim29 predates the metazoan lineage being present in the animal sister lineages, choanoflagellate and filastereans, whereas the erroneously named Tim10b arose from a duplication of Tim9 at the base of metazoans. In fungi, we show that Tim54 has representatives present in every holomycotan lineage including microsporidians and fonticulids, whereas Tim18 and Tim12 appeared much later in fungal evolution. Specifically, Tim18 and Tim12 arose from duplications of Sdh3 and Tim10, respectively, early in the Saccharomycotina. Surprisingly, we show that Tim54 is distantly related to AGK suggesting that AGK and Tim54 are extremely divergent orthologues and the origin of AGK/Tim54 interaction with Tim22 predates the divergence of animals and fungi.

**Conclusions:** We argue that the evolutionary history of the TIM22 complex is best understood as the neutral structural divergence of an otherwise strongly functionally conserved protein complex. This view suggests that many of the differences in structure/subunit composition of multi-protein complexes are non-adaptive. Instead, most of the phylogenetic variation of functionally conserved molecular machines, which have been under stable selective pressures for vast phylogenetic spans, such as the TIM22 complex, is most likely the outcome of the interplay of random genetic drift and

## Open Peer Review

Reviewer Status 

Invited Reviewers

1

2

version 1


28 Aug 2020



report



report

1. **Kevin R. Lynch** , University of Virginia, Charlottesville, USA

2. **Thomas Becker**, University of Freiburg, Freiburg, Germany

Any reports and responses or comments on the article can be found at the end of the article.

mutation pressure.

### Keywords

TIM22 complex, Mitochondrial protein import, Mitochondrial evolution, Neutral evolution

**Corresponding author:** Jeremy G. Wideman ([jeremy.wideman@asu.edu](mailto:jeremy.wideman@asu.edu))

**Author roles:** **Muñoz-Gómez SA:** Conceptualization, Methodology, Validation, Writing – Original Draft Preparation, Writing – Review & Editing; **Snyder SN:** Formal Analysis, Investigation, Visualization, Writing – Review & Editing; **Montoya SJ:** Data Curation, Investigation, Visualization, Writing – Review & Editing; **Wideman JG:** Conceptualization, Investigation, Project Administration, Supervision, Validation, Visualization, Writing – Original Draft Preparation, Writing – Review & Editing

**Competing interests:** No competing interests were disclosed.

**Grant information:** The author(s) declared that no grants were involved in supporting this work.

**Copyright:** © 2020 Muñoz-Gómez SA *et al.* This is an open access article distributed under the terms of the [Creative Commons Attribution License](#), which permits unrestricted use, distribution, and reproduction in any medium, provided the original work is properly cited.

**How to cite this article:** Muñoz-Gómez SA, Snyder SN, Montoya SJ and Wideman JG. **Independent accretion of TIM22 complex subunits in the animal and fungal lineages [version 1; peer review: 2 approved]** F1000Research 2020, 9:1060 <https://doi.org/10.12688/f1000research.25904.1>

**First published:** 28 Aug 2020, 9:1060 <https://doi.org/10.12688/f1000research.25904.1>

## Introduction

Mitochondria evolved from an ancient alphaproteobacterial endosymbiont (Martijn *et al.*, 2018; Roger *et al.*, 2017). The integration of the symbiont into host cell processes required the evolution of dedicated machinery for the import of host-encoded proteins (Roger *et al.*, 2017). The establishment of symbiont protein import allowed the transfer of many genes from the symbiont to the host genome as well as domestication of symbiont metabolic processes (e.g., via the evolution of mitochondrial carrier family proteins MCFs) (Cavalier-Smith, 2006). Understanding how symbionts become organelles and integrate into host cell processes requires an understanding of how protein import machineries originate and diversify.

Proteins imported into the mitochondria require several dedicated protein complexes to ensure proper sorting and assembly into mitochondrial subcompartments, including the mitochondrial outer membrane (MOM), the mitochondrial inner membrane (MIM), the intermembrane space (IMS) and the matrix (Wiedemann & Pfanner, 2017). The translocase of the mitochondrial outer membrane complex (TOM) facilitates the transport of all mitochondrial proteins (with the exception of some MOM proteins (Becker *et al.*, 2008; Becker *et al.*, 2011; Dimmer *et al.*, 2012; Doan *et al.*, 2020)). The sorting and assembly machinery complex (SAM) is required for the import and assembly of MOM  $\beta$ -barrel proteins like Tom40, Sam50, Mdm10, and Porin. Two translocase of the mitochondrial inner membrane (TIM) complexes facilitate MIM protein import. The TIM23 complex is required for the membrane translocation of proteins with presequences that are directed into the matrix as well as single-pass transmembrane domain (TMD) proteins (Mokranjac & Neupert, 2010). The TIM22 complex is responsible for inserting and assembling multi-pass TMD proteins like MCFs into the MIM (Horten *et al.*, 2020).

All of these protein complexes are inferred to have been present in the last eukaryotic common ancestor (LECA) and the general phylogenetic profiles of their components have been recently reported (Fukasawa *et al.*, 2017; Mani *et al.*, 2015). Investigations have so far focused on the broad distribution of subunits across eukaryotes, leaving some details unexplored, like the evolution of TIM22 complex components.

The TIM22 complex functions to assemble multi-pass TMD proteins like MCFs into the MIM (Kerscher *et al.*, 1997). In both human and yeast cells, TIM22 substrates first cross the MOM via TOM and are delivered to the small tim complexes (Tim9-10 and Tim8-13 complexes; Tim12 is additionally present in *S. cerevisiae*, whereas Tim10a and Tim10b, as well as Tim8a and Tim8b are present in human) which shuttle proteins through the IMS to TIM22 (Beverly *et al.*, 2008; Davis *et al.*, 2007; Gentle *et al.*, 2007; Hoppins & Nargang, 2004; Koehler *et al.*, 1998; Sirrenberg *et al.*, 1998).

In *S. cerevisiae*, the TIM22 complex comprises Tim22, Tim54, Tim12, Tim18, and Sdh3, whereas in human, the complex contains Tim22, Tim29, AGK (acylglycerol kinase), and a subset

of small Tims (Tim9, Tim10a, and Tim10b); as the small Tims are soluble proteins that shuttle hydrophobic substrates, they might not constitute stable components of the TIM22 complex. In *S. cerevisiae*, Tim54 plays a role in TIM22 complex stability as well as assembly of the Yme1 complex (Hwang *et al.*, 2007; Kerscher *et al.*, 1997). Sdh3 (a component of succinate dehydrogenase [SDH] – Complex II of the electron transport chain) and Tim18 (a paralogue of Sdh4) facilitate the integration of Tim54 into the TIM22 complex (Gebert *et al.*, 2011; Kerscher *et al.*, 2000; Koehler *et al.*, 2000). A recent cryo-EM structure has been solved for the human TIM22 complex, showing how the components interact within the MIM (Qi *et al.*, 2019). In human mitochondria, Tim29 stabilizes the TIM22 complex and links it to TOM (Callegari *et al.*, 2016; Kang *et al.*, 2016). AGK plays a role in the function of TIM22 as well as lipid metabolism (Kang *et al.*, 2017; Vukotic *et al.*, 2017).

Because animal and fungal TIM22 complexes are best characterized, both structurally and functionally, these lineages offer an ideal case to dissect the fine-grained evolutionary history of multi-protein complexes. Apart from the central Tim22 subunit (Fukasawa *et al.*, 2017; Žárský & Doležal, 2016), the origin and evolution of the TIM22 complex components in animals and fungi has not been extensively investigated. In this paper, we explore the evolutionary history of the TIM22 complex in animals and fungi, using homology searching and phylogenetic methods. We found that each lineage's TIM22 complex accreted subunits independently. We place our findings in a larger theoretical framework recently developed by Lynch (Lynch, 2020; Lynch & Trickovic, 2020). We argue that most of the structural variation seen in the functionally conserved TIM22 complex across the Holozoa and the Holomycota is non-adaptive. The evolutionary history of the TIM22 complex probably represents an example of effectively neutral divergence from an optimal mean phenotype which has primarily been governed by the joint forces of drift and mutation.

## Results and discussion

### Tim29, AGK, Tim10b, and Tim8b have varied phyletic distribution in the holozoan lineage

Recent investigations have identified complex components beyond Tim22 in human cells, namely Tim29 and AGK (Callegari *et al.*, 2016; Kang *et al.*, 2016; Kang *et al.*, 2017; Mårtensson & Becker 2017; Qi *et al.*, 2019; Vukotic *et al.*, 2017). Tim29 was originally identified as a complex component primarily involved in complex assembly and stability (Kang *et al.*, 2016) but was subsequently also shown to be important for protein import (Callegari *et al.*, 2016). The Sengers syndrome-associated AGK was originally shown to catalyze the phosphorylation of acylglycerols to lysophosphatidic and phosphatidic acid in the MIM (Bektas *et al.*, 2005), but has recently been identified as a TIM22 complex member in human cells (Kang *et al.*, 2017; Vukotic *et al.*, 2017). A cryo-EM structure that includes Tim22, Tim29, AGK, and the small Tims (Tim9, Tim10a, and Tim10b) has recently been reported (Qi *et al.*, 2019). Since Tim29, AGK, and Tim10b are not present in fungi (Fukasawa *et al.*, 2017), we sought to determine when in the holozoan lineage these proteins were gained.

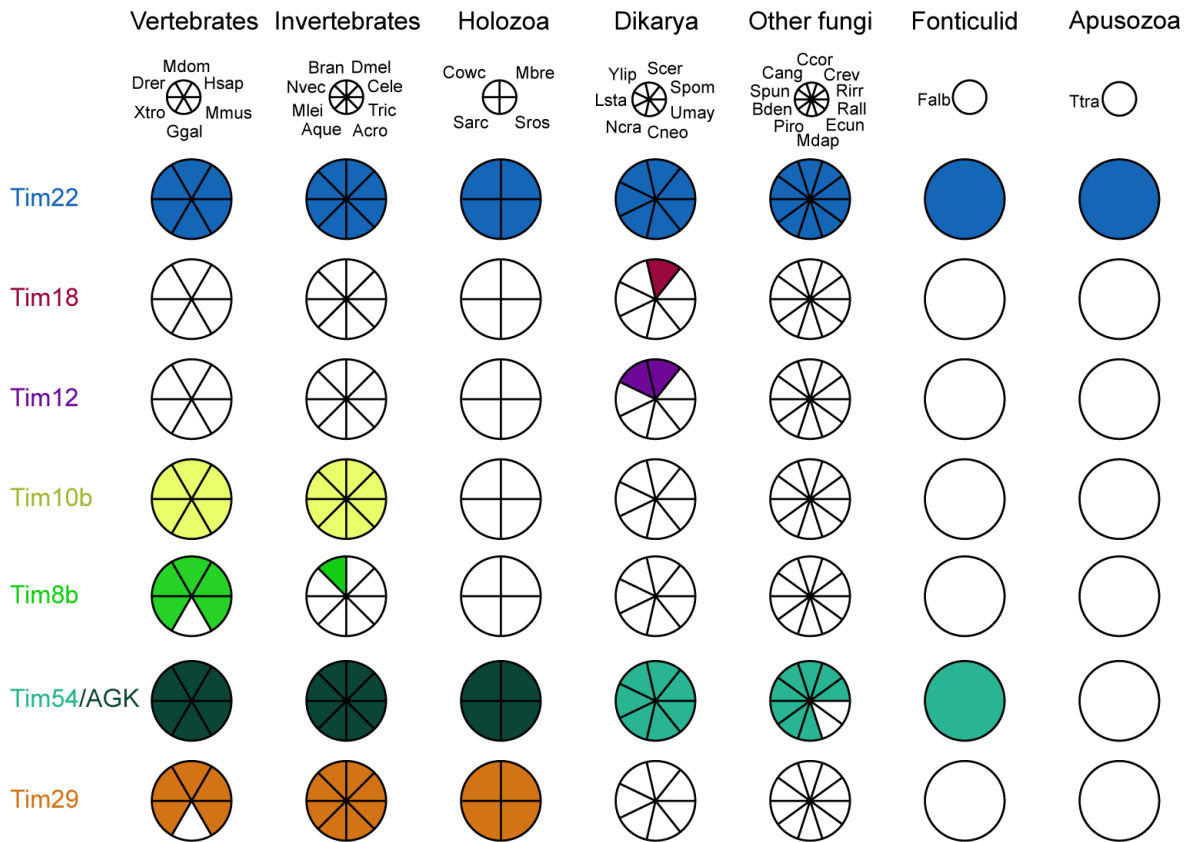
Using the reciprocal best BLAST search method, we identified orthologues of Tim29 in the genomes of most animal species and unicellular eukaryotes (i.e., protists) most closely related to animals (Figure 1). This means Tim29 originated prior to the origin of animals. We could not identify Tim29 in *Gallus gallus*; however, orthologous sequences were recovered from other birds and reptiles, suggesting loss of Tim29 is limited to chickens. We used our set of Tim29 sequences to search for orthologues across eukaryotes using the HMMer server (Finn *et al.*, 2011) at EBI. When restricting our taxon searching to exclude holozoans, we retrieved no hits below our 0.01 e-value significance cut off, strongly suggesting that no homologues of Tim29 exist outside Holozoa (Extended data, Supplemental Text File 1; Wideman *et al.*, 2020).

To determine when in the holozoan lineages the TIM22 subunits AGK, Tim10b, and Tim8b first appeared, we collected

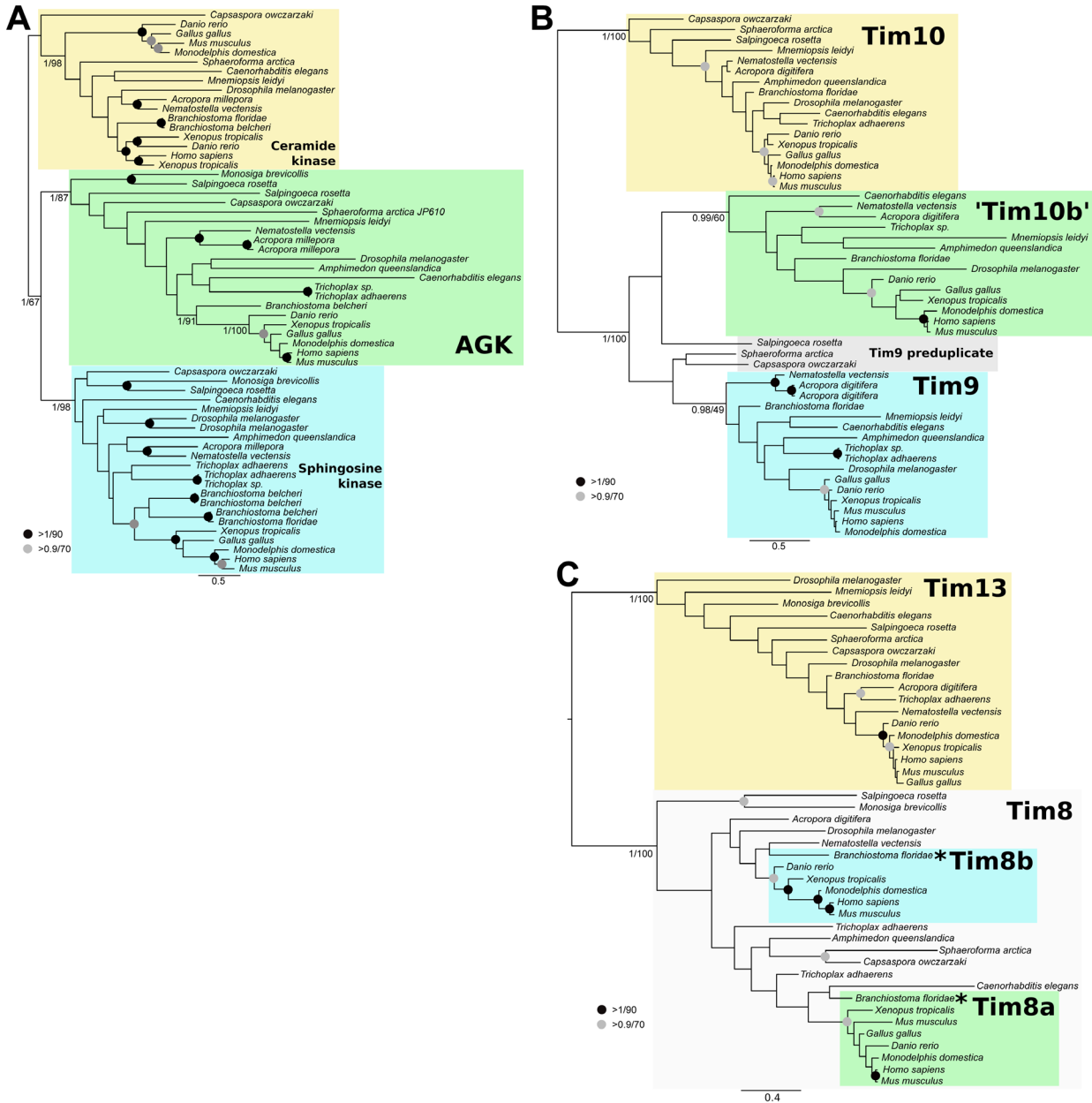
sequences related to AGK and the small Tims from diverse holozoan genomes. We aligned sequences using MUSCLE (Edgar, 2004) and performed phylogenetic reconstructions using RAxML (Stamatakis, 2014) and MrBayes (Ronquist *et al.*, 2012).

The phylogenetic reconstruction of AGK and related sequences clearly distinguish putative clades of holozoan AGK, ceramide kinase, and sphingosine kinase indicative of a pre-metazoan ancestry of these enzymes (Figure 2A). We did not include representatives from an outgroup as the best BLAST hits of AGK outside the holozoan lineage were cyanobacteria, oomycetes, and plants, suggesting that a detailed analysis of this gene family is required to understand its origin and evolutionary history in eukaryotes.

For the small Tims, the reconstructed phylogenies (Figures 2B and 2C) include well-supported Tim10a and Tim13 clades. This



**Figure 1. Distribution of TIM22 complex components across eukaryotes.** The Coulson plot was generated using the Coulson Plot Generator (Field *et al.*, 2013). Abbreviations: **Vertebrates:** Hsap, *Homo sapiens*; Mdom, *Monodelphis domestica*; Drer, *Danio rerio*; Xtro, *Xenopus tropicalis*; Ggal, *Gallus gallus*; Mmus, *Mus musculus*; **Invertebrates:** Dmel, *Drosophila melanogaster*; Cele, *Caenorhabditis elegans*; Tric, *Trichoplax sp.*; Acro, *Acropora sp.*; Aque, *Amphimedon queenslandica*; Mlei, *Mnemiopsis leidyi*; Nvec, *Nematostella vectensis*; Bran, *Branchiostoma sp.*; **Unicellular Holozoa:** Mbre, *Monosiga brevicollis*; Cowc, *Capsaspora owczarzaki*; Sarc, *Sphaeroforma arctica*; Sros, *Salpingoeca rosetta*; **Fungi:** Spom, *Schizosaccharomyces pombe*; Scer, *Saccharomyces cerevisiae*; Ncra, *Neurospora crassa*; Cneo, *Cryptococcus neoformans*; Umay, *Ustilago maydis*; Lsta, *Lipomyces starkeyi*; Ylip, *Yarrowia lipolytica*; Bden, *Batrachochytrium dendrobatidis*; Mdap, *Mitosporidium daphnia*; Ecu, *Encephalitozoon cuniculi*; Piro, *Piromyces sp.*; Spun, *Spizellomyces punctatus*; Rirr, *Rhizophagus irregularis*; Crev, *Coemansia reversa*; Ccor, *Conidiobolus coronatus*; Cang, *Catenaria anguillulae*; Rall, *Rozella allomyces*; **Fonticulids:** Falb, *Fonticula alba*; **Apusozoa:** Ttra, *Thecamonas trahens*.



**Figure 2. Phylogenetic analysis of holozoan TIM22 subunits.** (A) Acylglycerol Kinase (AGK) was present in the ancestral holozoan. (B) Tim10b arose from a duplication of Tim9 at the base of metazoans. (C) Tim8a and Tim8b arose from a duplication of Tim8 at the base of chordates. Homologues of AGK and small tims were collected from a subset of holozoan taxa using BLASTp. Sequences were aligned and trimmed resulting in 296, 75, and 73 sites for AGK, Tim9/10, and Tim8/13, respectively. The asterisks indicate true Tim8a and Tim8b orthologues that are not supported in our tree but are confirmed by best BLAST analysis. The resulting alignments were subjected to phylogenetic analysis using MrBayes (Ronquist *et al.*, 2012) for posterior probability and RAXML (Stamatakis, 2014) for maximum likelihood frameworks.

suggests that Tim10b was the result of a duplication of Tim9 at the base of animals (Figure 2B), whereas Tim8a and Tim8b are the result of a duplication at the base of chordates (Figure 2C). Although we did not recover Tim8a and Tim8b sequences from *Branchiostoma floridae* within the vertebrate clades of Tim8a and Tim8b (Figure 2C, asterisks), their best BLAST hits are clearly Tim8a and Tim8b from vertebrates, respectively. We therefore conclude that Tim8a and Tim8b arose prior to the

divergence of chordates from the rest of animals. We were unable to recover small Tim sequences from the Choanoflagellate *Monosiga brevicollis*, but this is likely due to an incomplete database as Tim9 and Tim10 are probably essential in holozoans.

These results demonstrate that TIM22 complex subunits were accreted very early in the holozoa. Tim29 and AGK (but see

below) appear to be gained shortly after the holozoan lineage diverged from the holomycotan lineage, Tim10b originated shortly after the origin of animals, and Tim8b originated after the origin of chordates. This means that Tim29 and AGK pre-date the origin of animals and have persisted in this lineage for about a billion years and Tim10b arose shortly thereafter.

### Tim54 is related to AGK and diverged at the base of fungi whereas Tim18 and Tim12 are the result of Saccharomycotina-specific gene duplications

Components of the TIM22 complex were identified in fungi much earlier than the recent discoveries in animals (Kerscher *et al.*, 1997; Kerscher *et al.*, 2000; Koehler *et al.*, 2000). Tim54 appears to be involved in complex stability as well as integration of MIM proteases (Hwang *et al.*, 2007; Kerscher *et al.*, 1997), but its mechanism of action is unclear. In yeast, Tim18 is related to Sdh4 of the SDH complex (Kerscher *et al.*, 2000; Koehler *et al.*, 2000). Another SDH complex member, Sdh3 interacts with Tim18 as a TIM22 complex module that is integrated into the MIM by the OXA complex (Stiller *et al.*, 2016). Sdh3 and Tim18 are involved in the biogenesis and assembly of Tim22 and Tim54 into a functional TIM22 complex (Gebert *et al.*, 2011). Finally, Tim12 is a small Tim that is not found outside the yeast lineage.

Using the reciprocal best BLAST method, we were able to identify Tim54 in representatives from every major fungal lineage as well as *Fonticula alba*, but no other eukaryotic lineage (Figure 1). We were unable to identify Tim54 in *Rozella allomyces* or microsporidians except *Mitosporidium daphniae*, a short-branching microsporidian with canonical mitochondria (Haag *et al.*, 2014). We used our set of Tim54 sequences to search for orthologues across eukaryotes using the HMMer (Finn *et al.*, 2011) server at EBI. When restricting our taxon searching to exclude fungi and *Fonticula*, we surprisingly retrieved AGK sequences from animals (141 hits above threshold) and *Capsaspora* as top hits (Extended data, Supplemental Text File 2; Wideman *et al.*, 2020). These results indicate that Tim54 and AGK likely share a common ancestor; however, the diacylglycerol kinase (DAGK) domain is now virtually undetectable in fungal sequences.

To determine when Tim18 and Tim12 originated, sequences related to Tim18, Sdh4, Tim10, and Tim12 were collected from all Saccharomycotina in the MycoCosm database (Grigoriev *et al.*, 2013). We trimmed long sequences and removed any spurious hits (as determined by reciprocal BLAST into the *S. cerevisiae* S288c genome). Sequences were aligned using MUSCLE (Edgar, 2004), manually trimmed, and phylogenies reconstruction using RAxML (Stamatakis, 2014) and MrBayes (Ronquist *et al.*, 2012) for likelihood and posterior probability calculations, respectively. The phylogenetic reconstruction of Tim18 indicates that a duplication occurred after the divergence of early-branching Saccharomycotina (e.g. *Lipomyces* and *Yarrowia*), but before the divergence of a major clade that includes *Wickerhamomyces* and *Saccharomyces* (Figure 3A). An additional Sdh4 paralogue Shh4 is the result of the more recent *Saccharomyces* lineage whole genome duplication/hybridization event (Kellis *et al.*, 2004; Marcet-Houben & Gabaldón, 2015;

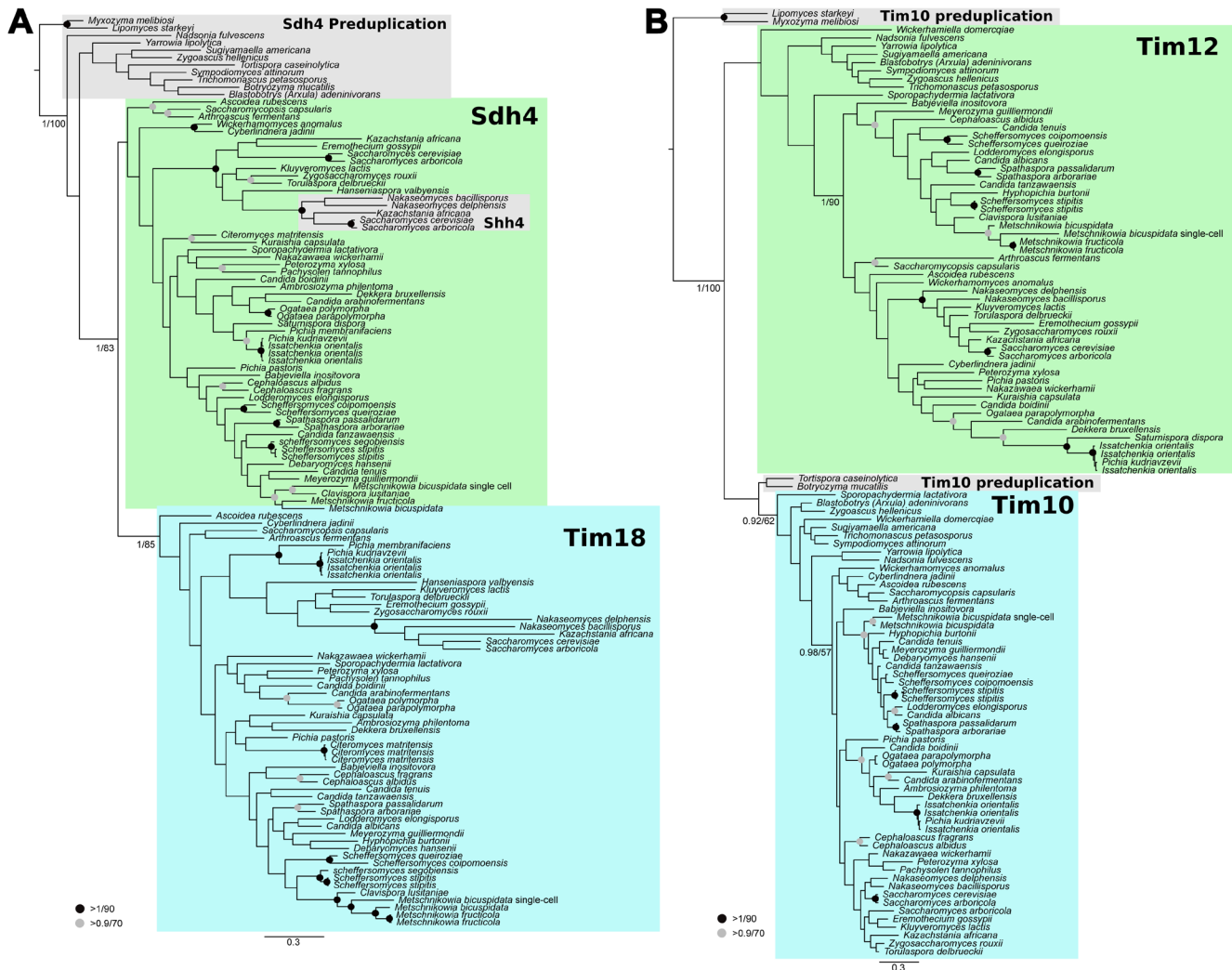
Wolfe & Shields, 1997). The phylogenetic reconstruction of Tim12 suggests that a duplication of the Tim10 protein occurred even earlier in Saccharomycotina (Figure 3B) as only the earliest-branching species lack clear Tim12 representatives (e.g., *Lipomyces starkeyi*).

In contrast to the animal TIM22 complex, which accreted subunits early in the evolution of animals, we demonstrate that a gradual accretion of TIM22 complex subunits occurred in the lineage leading to *S. cerevisiae*. Tim54 is likely a divergent fungal AGK which lost the DAGK domain after the divergence of holomycota from holozoa (Figure 4). Tim18 and Tim12 are respectively derived from duplications of Sdh4 and Tim10 deep within the Saccharomycotina. It is unknown if other fungal lineages have undergone similar expansions of the TIM22 complex.

### Conclusions

The first elements of a larger theoretical framework to quantitatively understand the macroevolution of cells, their organelles, and molecular machines have been developed (Lynch, 2020; Lynch & Trickovic, 2020). Our findings are consistent with the predictions made by the theory of effectively neutral divergence of mean phenotypes across major phylogenetic lineages (Lynch, 2020). This theory assumes that the selective pressures on many molecular machines have remained relatively constant for long stretches of macroevolutionary time. This is most likely the case for many multi-protein complexes whose functions are strongly conserved across vast phylogenetic spans. Mitochondrial protein import complexes, such as TIM22, are good examples of such strongly functionally conserved systems. The TIM22 complex has to physically interact with dozens or even hundreds of substrates for their proper insertion into the MIM. This implies that its functional divergence is constrained (and/or buffered) by its many physical interactions. However, slight deviations from an optimal (functional) phenotypic mean could be expected as a consequence of a permissive population-genetic environment, i.e., stronger drift due to historical bottlenecks or smaller effective population sizes. As selective pressures are assumed to remain constant for many conserved multi-protein complexes in stable cellular environments, most phenotypic divergence would be dictated by the combined action of random genetic drift and mutation pressure. Most divergence seen in multi-protein complexes or molecular machines, therefore, would primarily be non-functional and non-adaptive but mostly structural (e.g., subunit composition) in character.

Many other observations appear to be compatible with this view. The common recruitment of paralogous subunits, as well as the presence of highly derived and lineage-specific subunits in multi-protein complexes provide general examples. More specifically, kinetoplastids offer another example in a protein-import complex. *Trypanosoma brucei* lacks the TIM23 complex and instead contains a bifunctional Tim22 protein that acts both as a presequence and a carrier translocase complex (Harsman *et al.*, 2016; Schneider, 2020; Singha *et al.*, 2008). We have recently suggested that the bifunctional Tim22 complex of kinetoplastids evolved neutrally via homologue replacement



**Figure 3. Phylogenetic analysis of Saccharomycotina TIM22 subunits. (A)** Tim18 arose from a duplication of Sdh4 deep within the yeast lineage. **(B)** Tim12 arose from a duplication of Tim10 near the base of Saccharomycotina. Homologues of Tim18/Sdh4 and Tim10/12 were collected from sequenced Saccharomycotina on MycoCosm (Grigoriev *et al.*, 2013) using BLASTp. Sequences were aligned and trimmed resulting in 128 and 82 sites for Tim18 and small tims, respectively. The resulting alignments were subjected to phylogenetic analysis using MrBayes (Ronquist *et al.*, 2012) for posterior probability and RAXML (Stamatakis, 2014) for maximum likelihood frameworks.

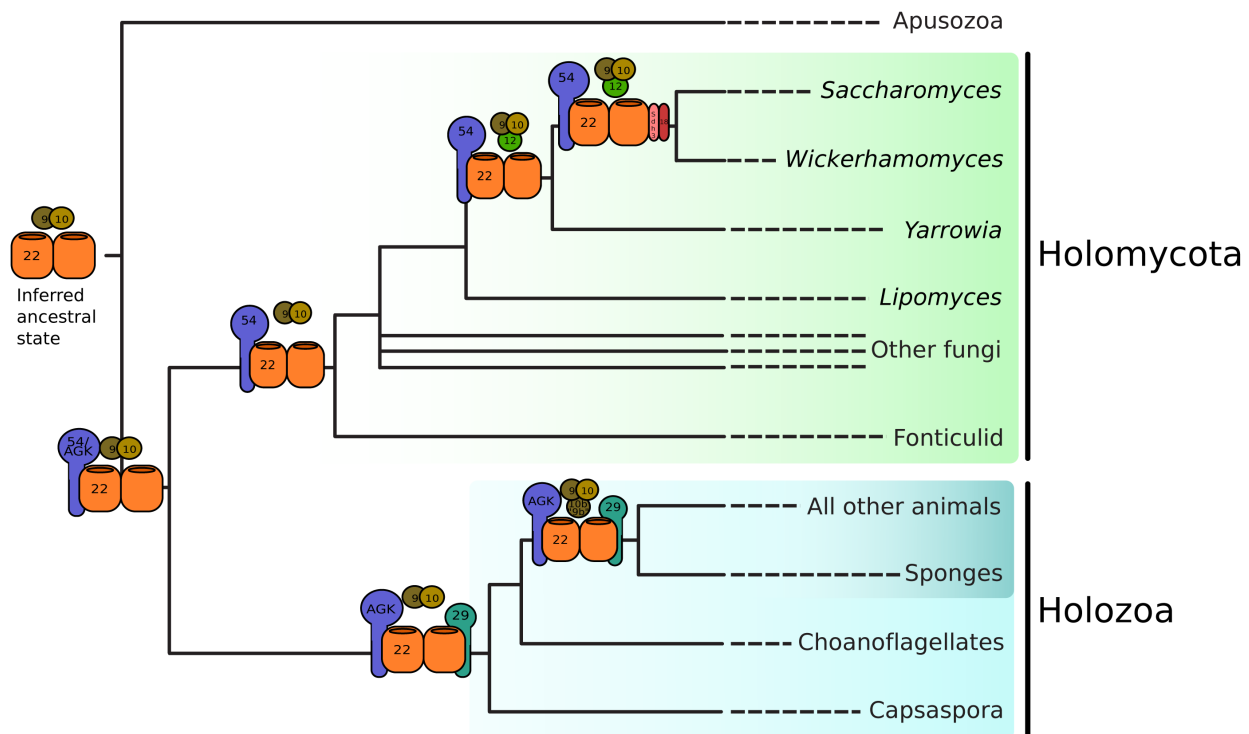
of ancestral components followed by loss of TIM23 (von Känel *et al.*, 2020). This massive divergence from the ancestral state probably added no obvious benefit to the organism. As long as the whole still performs the same function, it doesn't matter what parts are used. This is also the sentiment behind neutral evolution of cellular structures (Wideman *et al.*, 2019; Zhang, 2018). Evolutionary divergence primarily dictated by drift and mutation (under stable selective pressure in constant cellular environments (Lynch, 2020)); would certainly allow for the constructive, ratchet-like, structural evolution of multi-protein complex ((Gray *et al.*, 2010; Stoltzfus, 1999; Stoltzfus, 2012; Wideman *et al.*, 2019); a.k.a., constructive neutral evolution). Further comparative investigations at the bench are required to determine what functional differences exist between fungal and animal TIM22 complexes, and whether other eukaryotic

lineages have accreted subunits in a similar way to opisthokonts (Figure 4).

**Methods**

**Homology searching**

Tim22 orthologues were identified previously (Žárský & Doležal, 2016). We used the reciprocal best hit method to identify Tim54 and Tim29 orthologues in fungi and holozoans, respectively. Briefly, *S. cerevisiae* Tim54 and *Homo sapiens* Tim29 were used as BLASTp (Altschul *et al.*, 1997) queries into opisthokont predicted proteomes (see Figure 1 for organism list) using the NCBI BLAST server or MycoCosm database (Grigoriev *et al.*, 2013). The top hit was retrieved and used as a BLASTp query into *S. cerevisiae* (for Tim54) or *H. sapiens* (for Tim29) proteome. If the top hit was the original BLASTp



**Figure 4. TIM22 complex subunits were gained independently in the animal and fungal lineages.** The ancestral TIM22 complex comprises a single subunit, Tim22, which likely interacted with the small Tims, Tim9 and Tim10. The ancestral opisthokont TIM22 complex contained an additional subunit, AGK, which retains a diacylglycerol kinase (DAGK) domain in holozoans. In the holomycotan lineage, the DAGK domain was lost or diverged beyond recognition, but stabilized into Tim54, which is well-conserved across Holomycota. Early in the evolution of Saccharomycotina, Tim12 was gained via a duplication of Tim10, and Tim18 was gained via a duplication of Sdh4. Shortly after the divergence of Holozoa from Holomycota, Tim29 was gained as a subunit of the TIM22 complex. Tim10b was gained after the divergence of Metazoa from the unicellular holozoans from a duplication of Tim9. Tim8a and Tim8b result from a duplication of Tim8 in the lineage leading to chordates (not shown).

query, then the retrieved protein was considered orthologous. Using HMMer (Finn *et al.*, 2011) at EBI we used our collected Tim54 and Tim29 sequences to build Hidden Markov Model profiles to identify orthologues across eukaryotes. Orthologue distribution across opisthokonts was visualized using the Coulson Plot Generator (Field *et al.*, 2013).

### Phylogenetic analysis of AGK, Tim18, and small Tim homologues

Homologues of AGK, and small Tims were collected from metazoan predicted proteomes using BLASTp. Homologues of Tim18, Sdh4, Tim10, and Tim12 were collected from all sequenced Saccharomycotina from the MycoCosm database using BLASTp (Grigoriev *et al.*, 2013). Pertinent homologues were aligned with MUSCLE (Edgar, 2004) and manually trimmed using Mesquite v.2.75. Phylogenetic tree reconstructions were performed using MrBayes v.3.2.6 for Bayesian analysis (Ronquist *et al.*, 2012). MrBayes analyses were run with the following parameters: prset aamodelpr = fixed (WAG); mcmcngen = 2,000,000; samplefreq = 1000; nchains = 4; startingtree = random; sumt burnin = 250. Split frequencies were checked to

ensure convergence. Maximum-likelihood bootstrap values (100 pseudoreplicates) were obtained using RAxML v.8.2.10 (Stamatakis, 2014) under the LG model (Le & Gascuel, 2008).

### Data availability

#### Source data

Sequence accession are provided in *Extended data*, Supplemental Table 1 (Wideman *et al.*, 2020). Sequences are from the NCBI database, the MycoCosm database at the Joint Genome Institute, or from the *Mnemiopsis leydi* genome database.

#### Extended data

Figshare: Extended Data: Independent accretion of TIM22 complex subunits in the animal and fungal lineages. <https://doi.org/10.6084/m9.figshare.12818786.v1> (Wideman *et al.*, 2020).

This project contains the following extended data:

- Supplemental Table 1. TIM22 complex subunit accessions collected in this investigation.
- Supplemental Text File 1. Tim29 HMMer results .txt file.
- Supplemental Text File 2. Tim54 HMMer results .txt file.



## References

- Altschul SF, Madden TL, Schäffer AA, *et al.*: **Gapped BLAST and PSI-BLAST: a new generation of protein database search programs.** *Nucleic Acids Res.* 1997; **25**(17): 3389–402.  
[PubMed Abstract](#) | [Publisher Full Text](#) | [Free Full Text](#)
- Becker T, Pfannschmidt S, Guiard B, *et al.*: **Biogenesis of the mitochondrial TOM complex: Mim1 promotes insertion and assembly of signal-anchored receptors.** *J Biol Chem.* 2008; **283**(1): 120–7.  
[PubMed Abstract](#) | [Publisher Full Text](#)
- Becker T, Wenz LS, Krüger V, *et al.*: **The mitochondrial import protein Mim1 promotes biogenesis of multispinning outer membrane proteins.** *J Cell Biol.* 2011; **194**(3): 387–395.  
[PubMed Abstract](#) | [Publisher Full Text](#) | [Free Full Text](#)
- Bektas M, Payne SG, Liu H, *et al.*: **A novel acylglycerol kinase that produces lysophosphatidic acid modulates cross talk with EGFR in prostate cancer cells.** *J Cell Biol.* 2005; **169**(5): 801–811.  
[PubMed Abstract](#) | [Publisher Full Text](#) | [Free Full Text](#)
- Beverly KN, Sawaya MR, Schmid E, *et al.*: **The Tim8-Tim13 Complex Has Multiple Substrate Binding Sites and Binds Cooperatively to Tim23.** *J Mol Biol.* 2008; **382**(5): 1144–1156.  
[PubMed Abstract](#) | [Publisher Full Text](#) | [Free Full Text](#)
- Callegari S, Richter F, Chojnacka K, *et al.*: **TIM29 is a subunit of the human carrier translocase required for protein transport.** *FEBS Lett.* 2016; **590**(23): 4147–4158.  
[PubMed Abstract](#) | [Publisher Full Text](#) | [Free Full Text](#)
- Cavalier-Smith T: **Origin of mitochondria by intracellular enslavement of a photosynthetic purple bacterium.** *Proc Biol Sci.* 2006; **273**(1596): 1943–1952.  
[PubMed Abstract](#) | [Publisher Full Text](#) | [Free Full Text](#)
- Davis AJ, Alder NN, Jensen RE, *et al.*: **The Tim9p/10p and Tim8p/13p complexes bind to specific sites on Tim23p during mitochondrial protein import.** *Mol Biol Cell.* 2007; **18**(2): 475–486.  
[PubMed Abstract](#) | [Publisher Full Text](#) | [Free Full Text](#)
- Dimmer KS, Papić D, Schumann B, *et al.*: **A crucial role for Mim2 in the biogenesis of mitochondrial outer membrane proteins.** *J Cell Sci.* 2012; **125**(Pt 14): 3464–3473.  
[PubMed Abstract](#) | [Publisher Full Text](#)
- Doan KN, Grevel A, Mårtensson CU, *et al.*: **The Mitochondrial Import Complex MIM Functions as Main Translocase for  $\alpha$ -Helical Outer Membrane Proteins.** *Cell Rep.* 2020; **31**(4): 107567.  
[PubMed Abstract](#) | [Publisher Full Text](#)
- Edgar RC: **MUSCLE: a multiple sequence alignment method with reduced time and space complexity.** *BMC Bioinformatics.* 2004; **5**: 113.  
[PubMed Abstract](#) | [Publisher Full Text](#) | [Free Full Text](#)
- Field HI, Coulson RMR, Field MC: **An automated graphics tool for comparative genomics: the Coulson plot generator.** *BMC bioinformatics.* 2013; **14**(1): 141.  
[PubMed Abstract](#) | [Publisher Full Text](#) | [Free Full Text](#)
- Finn RD, Clements J, Eddy SR: **HMMER web server: interactive sequence similarity searching.** *Nucleic Acids Res.* 2011; **39**(Web Server issue): W29–37.  
[PubMed Abstract](#) | [Publisher Full Text](#) | [Free Full Text](#)
- Fukasawa Y, Oda T, Tomii K, *et al.*: **Origin and Evolutionary Alteration of the Mitochondrial Import System in Eukaryotic Lineages.** *Mol Biol Evol.* 2017; **34**(7): 1574–1586.  
[PubMed Abstract](#) | [Publisher Full Text](#) | [Free Full Text](#)
- Gebert N, Gebert M, Oeljeklaus S, *et al.*: **Dual function of Sdh3 in the respiratory chain and TIM22 protein translocase of the mitochondrial inner membrane.** *Mol Cell.* 2011; **44**(5): 811–818.  
[PubMed Abstract](#) | [Publisher Full Text](#)
- Gentile IE, Perry AJ, Alcock FH, *et al.*: **Conserved motifs reveal details of ancestry and structure in the small TIM chaperones of the mitochondrial intermembrane space.** *Mol Biol Evol.* 2007; **24**(5): 1149–60.  
[PubMed Abstract](#) | [Publisher Full Text](#)
- Gray MW, Lukes J, Archibald JM, *et al.*: **Cell biology. Irremediable complexity?** *Science.* 2010; **330**(6006): 920–921.  
[PubMed Abstract](#) | [Publisher Full Text](#)
- Grigoriev IV, Nikitin R, Haridas S, *et al.*: **MycCosm portal: gearing up for 1000 fungal genomes.** *Nucleic Acids Res.* 2013; **42**(Database issue): D699–D704.  
[PubMed Abstract](#) | [Publisher Full Text](#) | [Free Full Text](#)
- Haag KL, James TY, Pombert JF, *et al.*: **Evolution of a morphological novelty occurred before genome compaction in a lineage of extreme parasites.** *Proc Natl Acad Sci U S A.* 2014; **111**(43): 15480–15485.  
[PubMed Abstract](#) | [Publisher Full Text](#) | [Free Full Text](#)
- Harsman A, Oeljeklaus S, Wenger C, *et al.*: **The non-canonical mitochondrial inner membrane presequence translocase of trypanosomatids contains two essential rhomboid-like proteins.** *Nat Commun.* 2016; **7**: 1–13.  
[PubMed Abstract](#) | [Publisher Full Text](#) | [Free Full Text](#)
- Hoppins SC, Nargang FE: **The Tim8-Tim13 Complex of *Neurospora crassa* Functions in the Assembly of Proteins into Both Mitochondrial Membranes.** *J Biol Chem.* 2004; **279**(13): 12396–12405.  
[PubMed Abstract](#) | [Publisher Full Text](#)
- Horten P, Colina-Tenorio L, Rampelt H: **Biogenesis of mitochondrial metabolite carriers.** *Biomolecules.* 2020; **10**(7): 1008.  
[PubMed Abstract](#) | [Publisher Full Text](#) | [Free Full Text](#)
- Hwang DK, Claypool SM, Leuenberger D, *et al.*: **Tim54p connects inner membrane assembly and proteolytic pathways in the mitochondrion.** *J Cell Biol.* 2007; **178**(7): 1161–1175.  
[PubMed Abstract](#) | [Publisher Full Text](#) | [Free Full Text](#)
- Kang Y, Baker MJ, Liem M, *et al.*: **Tim29 is a novel subunit of the human TIM22 translocase and is involved in complex assembly and stability.** *Elife.* 2016; **5**: e17463.  
[PubMed Abstract](#) | [Publisher Full Text](#) | [Free Full Text](#)
- Kang Y, Stroud DA, Baker MJ, *et al.*: **Sengers Syndrome-Associated Mitochondrial Acylglycerol Kinase Is a Subunit of the Human TIM22 Protein Import Complex.** *Mol Cell.* 2017; **67**(3): 457–470.e5.  
[PubMed Abstract](#) | [Publisher Full Text](#)
- Kellis M, Birren BW, Lander ES: **Proof and evolutionary analysis of ancient genome duplication in the yeast *Saccharomyces cerevisiae*.** *Nature.* 2004; **428**(6983): 617–624.  
[PubMed Abstract](#) | [Publisher Full Text](#)
- Kerscher O, Holder J, Srinivasan M, *et al.*: **The Tim54p-Tim22p complex mediates insertion of proteins into the mitochondrial inner membrane.** *J Cell Biol.* 1997; **139**(7): 1663–1675.  
[PubMed Abstract](#) | [Publisher Full Text](#) | [Free Full Text](#)
- Kerscher O, Sepuri NB, Jensen RE: **Tim18p is a new component of the Tim54p-Tim22p translocase in the mitochondrial inner membrane.** *Mol Biol Cell.* 2000; **11**(1): 103–116.  
[PubMed Abstract](#) | [Publisher Full Text](#) | [Free Full Text](#)
- Koehler CM, Merchant S, Oppliger W, *et al.*: **Tim9p, an essential partner subunit of Tim10p for the import of mitochondrial carrier proteins.** *EMBO J.* 1998; **17**(22): 6477–86.  
[PubMed Abstract](#) | [Publisher Full Text](#) | [Free Full Text](#)
- Koehler CM, Murphy MP, Bally NA, *et al.*: **Tim18p, a New Subunit of the TIM22 Complex That Mediates Insertion of Imported Proteins into the Yeast Mitochondrial Inner Membrane.** *Mol Cell Biol.* 2000; **20**(4): 1187–1193.  
[PubMed Abstract](#) | [Publisher Full Text](#) | [Free Full Text](#)
- Le SQ, Gascuel O: **An improved general amino acid replacement matrix.** *Mol Biol Evol.* 2008; **25**(7): 1307–20.  
[PubMed Abstract](#) | [Publisher Full Text](#)
- Lynch M: **The evolutionary scaling of cellular traits imposed by the drift barrier.** *Proc Natl Acad Sci U S A.* 2020; **117**(19): 10435–10444.  
[PubMed Abstract](#) | [Publisher Full Text](#) | [Free Full Text](#)
- Lynch M, Trickovic B: **A Theoretical Framework for Evolutionary Cell Biology.** *J Mol Biol.* 2008; **432**(7): 1861–1879.  
[PubMed Abstract](#) | [Publisher Full Text](#)
- Mani J, Meisinger C, Schneider A: **Peeping at TOMs - Diverse entry gates to mitochondria provide insights into the evolution of eukaryotes.** *Mol Biol Evol.* 2015; **33**(2): 337–351.  
[PubMed Abstract](#) | [Publisher Full Text](#)
- Marcet-Houben M, Gabaldón T: **Beyond the whole-genome duplication: Phylogenetic evidence for an ancient interspecies hybridization in the baker's yeast lineage.** *PLoS Biol.* 2015; **13**(8): e1002220.  
[PubMed Abstract](#) | [Publisher Full Text](#) | [Free Full Text](#)
- Mårtensson CU, Becker T: **Acylglycerol Kinase: Mitochondrial Protein Transport Meets Lipid Biosynthesis.** *Trends Cell Biol.* 2017; **27**(10): 700–702.  
[PubMed Abstract](#) | [Publisher Full Text](#)
- Martijn J, Vosseberg J, Guy L, *et al.*: **Deep mitochondrial origin outside the sampled alphaproteobacteria.** *Nature.* 2018; **557**(7703): 101–105.  
[PubMed Abstract](#) | [Publisher Full Text](#)
- Mokranjac D, Neupert W: **The many faces of the mitochondrial TIM23 complex.** *Biochim Biophys Acta.* 2010; **1797**(6–7): 1045–1054.  
[PubMed Abstract](#) | [Publisher Full Text](#)
- Qi L, Wang Q, Guan Z, *et al.*: **Cryo-EM Structure of the Human Mitochondrial Translocase TIM22 Complex.** *bioRxiv.* 2019; 869289.  
[Publisher Full Text](#)
- Roger AJ, Muñoz-Gómez SA, Kamikawa R: **The Origin and Diversification of Mitochondria.** *Curr Biol.* 2017; **27**(21): R1177–R1192.  
[PubMed Abstract](#) | [Publisher Full Text](#)
- Ronquist F, Teslenko M, van der Mark P, *et al.*: **MrBayes 3.2: efficient Bayesian phylogenetic inference and model choice across a large model space.** *Syst Biol.* 2012; **61**(3): 539–42.  
[PubMed Abstract](#) | [Publisher Full Text](#) | [Free Full Text](#)
- Schneider A: **Evolution of mitochondrial protein import - lessons from trypanosomes.** *Biol Chem.* 2020; **401**(6–7): 663–676.  
[PubMed Abstract](#) | [Publisher Full Text](#)
- Singha UK, Peprah E, Williams S, *et al.*: **Characterization of the mitochondrial inner membrane protein translocator Tim17 from *Trypanosoma brucei*.** *Mol Biochem Parasitol.* 2008; **159**(1): 30–43.  
[PubMed Abstract](#) | [Publisher Full Text](#) | [Free Full Text](#)
- Sirrenberg C, Endres M, Folsch H, *et al.*: **Carrier protein import into**

**mitochondria mediated by the intermembrane proteins Tim10/Mrs11 and Tim12/Mrs5.** *Nature*. 1998; **391**(6670): 912–915.

[PubMed Abstract](#) | [Publisher Full Text](#)

Stamatakis A: **RAxML version 8: a tool for phylogenetic analysis and post-analysis of large phylogenies.** *Bioinformatics*. 2014; **30**(9): 1312–1313.

[PubMed Abstract](#) | [Publisher Full Text](#) | [Free Full Text](#)

Stiller SB, Höpker J, Oeljeklaus S, *et al.*: **Mitochondrial OXA Translocase Plays a Major Role in Biogenesis of Inner-Membrane Proteins.** *Cell Metab*. 2016; **23**(5): 901–908.

[PubMed Abstract](#) | [Publisher Full Text](#) | [Free Full Text](#)

Stoltzfus A: **On the possibility of constructive neutral evolution.** *J Mol Evol*. 1999; **49**(2): 169–81.

[PubMed Abstract](#) | [Publisher Full Text](#)

Stoltzfus A: **Constructive neutral evolution: exploring evolutionary theory's curious disconnect.** *Biol Direct*. 2012; **7**: 35.

[PubMed Abstract](#) | [Publisher Full Text](#) | [Free Full Text](#)

von Känel C, Muñoz-Gómez SA, Oeljeklaus S, *et al.*: **Homologue replacement in the import motor of the mitochondrial inner membrane of trypanosomes.** *Elife*. 2020; **9**: e52560.

[PubMed Abstract](#) | [Publisher Full Text](#) | [Free Full Text](#)

Vukotic M, Nolte H, König T, *et al.*: **Acylglycerol Kinase Mutated in Sengers Syndrome Is a Subunit of the TIM22 Protein Translocase in Mitochondria.**

*Mol Cell*. 2017; **67**(3): 471–483.e7.

[PubMed Abstract](#) | [Publisher Full Text](#)

Wideman JG, Novick A, Muñoz-Gómez SA, *et al.*: **Neutral evolution of cellular phenotypes.** *Curr Opin Genet Dev*. 2019; **58-59**: 87–94.

[PubMed Abstract](#) | [Publisher Full Text](#)

Wideman J, Munoz-Gomez S, Montoya S, *et al.*: **Extended Data: Independent accretion of TIM22 complex subunits in the animal and fungal lineages.** *figshare*. Dataset. 2020.

<http://www.doi.org/10.6084/m9.figshare.12818786.v1>

Wiedemann N, Pfanner N: **Mitochondrial Machineries for Protein Import and Assembly.** *Annu Rev Biochem*. 2017; **86**: 685–714.

[PubMed Abstract](#) | [Publisher Full Text](#)

Wolfe KH, Shields DC: **Molecular evidence for an ancient duplication of the entire yeast genome.** *Nature*. 1997; **387**(6634): 708–13.

[PubMed Abstract](#) | [Publisher Full Text](#)

Žárský V, Doležal P: **Evolution of the Tim17 protein family.** *Biol Direct*. 2016; **11**(1): 54.

[PubMed Abstract](#) | [Publisher Full Text](#) | [Free Full Text](#)

Zhang J: **Neutral Theory and Phenotypic Evolution.** *Mol Biol Evol*. 2018; **35**(6): 1327–1331.

[PubMed Abstract](#) | [Publisher Full Text](#) | [Free Full Text](#)

# Open Peer Review

Current Peer Review Status:  

---

Version 1

Reviewer Report 28 September 2020

<https://doi.org/10.5256/f1000research.28588.r70541>

© 2020 Becker T. This is an open access peer review report distributed under the terms of the [Creative Commons Attribution License](#), which permits unrestricted use, distribution, and reproduction in any medium, provided the original work is properly cited.



## Thomas Becker

Institute for Biochemistry and Molecular Biology, University of Freiburg, Freiburg, Germany

The TIM22 complex promotes import of carrier proteins into the inner mitochondrial membrane. Recent studies showed the composition of the TIM22 complex in human mitochondria, which displayed remarkable differences to the yeast homolog. Munoz-Gomez and colleagues investigate the phylogenetic origin of the TIM22 subunits. The authors found that yeast Tim54 and human AGK are distantly related. The furthermore showed that yeast Tim12 and Tim18 arose from gene duplication of Tim10 and Sdh3, respectively. Tim29 is specific for holozoan, while Tim12, Sdh3, Tim18 are specific for holomycota. Overall, the findings are interesting and well presented. I have only minor recommendations.

The authors should describe in more detail the substrates of the carrier pathway, including substrates with an uneven number of transmembrane spans that have been reported recently (Gomkale et al., 2020<sup>1</sup>; Rampelt et al., 2020<sup>2</sup>).

The authors should name all import pathways into mitochondria in the introduction. The current version is rather incomplete and lacks the MIM-dependent import pathway into the outer membrane. Furthermore, appropriate citations for TOM and SAM complexes should be added.

The section about the TIM22 components should be modified. The authors should describe that Tim18/Sdh3 are important for the stability of the TIM22 complex. Tim54 could serve as a docking site for small TIM chaperones of the intermembrane space.

## References

1. Gomkale R, Cruz-Zaragoza LD, Suppanz I, Guiard B, et al.: Defining the Substrate Spectrum of the TIM22 Complex Identifies Pyruvate Carrier Subunits as Unconventional Cargos. *Curr Biol*. 2020; **30** (6): 1119-1127. [e5 PubMed Abstract](#) | [Publisher Full Text](#)
2. Rampelt H, Sucec I, Bersch B, Horten P, et al.: The mitochondrial carrier pathway transports non-canonical substrates with an odd number of transmembrane segments. *BMC Biology*. 2020; **18** (1). [Publisher Full Text](#)

**Is the work clearly and accurately presented and does it cite the current literature?**

Yes

**Is the study design appropriate and is the work technically sound?**

Yes

**Are sufficient details of methods and analysis provided to allow replication by others?**

Yes

**If applicable, is the statistical analysis and its interpretation appropriate?**

I cannot comment. A qualified statistician is required.

**Are all the source data underlying the results available to ensure full reproducibility?**

Yes

**Are the conclusions drawn adequately supported by the results?**

Yes

**Competing Interests:** No competing interests were disclosed.

**I confirm that I have read this submission and believe that I have an appropriate level of expertise to confirm that it is of an acceptable scientific standard.**

Reviewer Report 24 September 2020

<https://doi.org/10.5256/f1000research.28588.r71396>

© 2020 Lynch K. This is an open access peer review report distributed under the terms of the [Creative Commons Attribution License](#), which permits unrestricted use, distribution, and reproduction in any medium, provided the original work is properly cited.



**Kevin R. Lynch** 

Department of Pharmacology, University of Virginia, Charlottesville, VA, USA

The well-studied *S. cerevisiae* and human Tim22 complexes both function in the transport/insertion of integral membrane proteins into the inner mitochondrial membrane, yet the only conserved protein of the complexes is Tim22 itself. Through a variety of protein sequence comparison techniques, the authors document the appearance of various Tim22 complex proteins in holozoan and holomycotan lineages. Surprisingly, the authors found that the animal Tim22 complex protein, AGK, is distantly related to the fungal Tim22 complex protein, Tim54. I do not have particular expertise in Molecular Evolution, rather my interest in the study is primarily through the narrower lens of an ongoing interest in the biochemistry of AGK.

The authors do not state what regions of AGK and Tim54 were found to be related, and this information is of interest, because even when comparing AGK with the closely related sphingolipid kinases, the only similarity (detected by BLASTP searches) is in the amino terminal, ATP-binding

region (identified by inference from human SPHK1 crystal structure). The authors report that AGK orthologs are readily identifiable when searching metazoan databases and can likewise be identified in a few unicellular eukaryotes that are closely related to animals (*e.g.* choanoflagellates, *Capsaspora*). This is readily verified with simple BLASTP searches using human AGK as a query sequence. However, after reading the paper twice, I remain confused as to whether AGK orthologs have been identified in other protist databases. Specifically, how do the authors distinguish between AGK orthologs and the paralogous DAG kinases?

While it is tangential to the subject of this paper, I note that AGK-focused publications have a somewhat tortuous history (of which the authors are, understandably, probably unaware). As documented in their Figure 2A, AGK is most closely related to sphingolipid kinases. That group in turn is more distantly related to the diacylglycerol kinase (DAGK) family and the NAD<sup>+</sup> kinases. The earliest AGK literature focused on its putative kinase activity. The authors reference the 2005 Bektas *et al.* paper in support of the contention that AGK is an acylglycerol kinase as is the common practice in AGK papers since 2005. However, there is little in the Bektas paper or elsewhere to validate this claim. Indeed, AGK appeared in the literature originally as a multi-substrate lipid kinase (PMID: 15252046<sup>1</sup>) and later as a possible ceramide kinase in *Drosophila* (PMID: 22069480<sup>2</sup>). Another group reported a failure to detect any kinase activity, *i.e.* AGK as an “orphan” kinase (PMID: 16269826<sup>3</sup>). I recommend that the authors consider citing all of these mutually contradictory reports since all save one have been neglected in the subsequent AGK literature – for no apparent reason except ‘everybody else does it’. The more recent AGK literature includes the discovery that humans born deficient in the protein suffer from Sengers syndrome, which is characterized by mitochondrial insufficiency. Subsequent to that discovery, AGK was found to be a component of the Tim22 complex in human cells. Interestingly, a single amino change (G126E) in human AGK that would eliminate enzyme activity (by inference from the better characterized sphingosine kinases) does not inhibit the import function of the Tim22 complex in cultured cells.

## References

1. Waggoner DW, Johnson LB, Mann PC, Morris V, et al.: MuLK, a eukaryotic multi-substrate lipid kinase. *J Biol Chem.* 2004; **279** (37): 38228-35 [PubMed Abstract](#) | [Publisher Full Text](#)
2. McElwain MA, Ko DC, Gordon MD, Fyrst H, et al.: A suppressor/enhancer screen in *Drosophila* reveals a role for wnt-mediated lipid metabolism in primordial germ cell migration. *PLoS One.* 2011; **6** (11): e26993 [PubMed Abstract](#) | [Publisher Full Text](#)
3. Van Overloop H, Gijbbers S, Van Veldhoven PP: Further characterization of mammalian ceramide kinase: substrate delivery and (stereo)specificity, tissue distribution, and subcellular localization studies. *J Lipid Res.* 2006; **47** (2): 268-83 [PubMed Abstract](#) | [Publisher Full Text](#)

**Is the work clearly and accurately presented and does it cite the current literature?**

Partly

**Is the study design appropriate and is the work technically sound?**

Yes

**Are sufficient details of methods and analysis provided to allow replication by others?**

Yes

**If applicable, is the statistical analysis and its interpretation appropriate?**

Yes

**Are all the source data underlying the results available to ensure full reproducibility?**

Yes

**Are the conclusions drawn adequately supported by the results?**

Partly

**Competing Interests:** No competing interests were disclosed.

**Reviewer Expertise:** Sphingolipid biochemistry, specifically sphingosine-1-phosphate synthesis, transport, degradation and receptor binding. Thus, as stated in my comments, my focus on AGK, which is a member of the sphingolipid kinase family.

**I confirm that I have read this submission and believe that I have an appropriate level of expertise to confirm that it is of an acceptable scientific standard.**

---

The benefits of publishing with F1000Research:

- Your article is published within days, with no editorial bias
- You can publish traditional articles, null/negative results, case reports, data notes and more
- The peer review process is transparent and collaborative
- Your article is indexed in PubMed after passing peer review
- Dedicated customer support at every stage

For pre-submission enquiries, contact [research@f1000.com](mailto:research@f1000.com)

**F1000Research**