



Hormonal axes in *Drosophila*: regulation of hormone release and multiplicity of actions

Dick R. Nässel¹ · Meet Zandawala²

Received: 27 May 2020 / Accepted: 20 July 2020 / Published online: 22 August 2020
© The Author(s) 2020

Abstract

Hormones regulate development, as well as many vital processes in the daily life of an animal. Many of these hormones are peptides that act at a higher hierarchical level in the animal with roles as organizers that globally orchestrate metabolism, physiology and behavior. Peptide hormones can act on multiple peripheral targets and simultaneously convey basal states, such as metabolic status and sleep-awake or arousal across many central neuronal circuits. Thereby, they coordinate responses to changing internal and external environments. The activity of neurosecretory cells is controlled either by (1) cell autonomous sensors, or (2) by other neurons that relay signals from sensors in peripheral tissues and (3) by feedback from target cells. Thus, a hormonal signaling axis commonly comprises several components. In mammals and other vertebrates, several hormonal axes are known, such as the hypothalamic-pituitary-gonad axis or the hypothalamic-pituitary-thyroid axis that regulate reproduction and metabolism, respectively. It has been proposed that the basic organization of such hormonal axes is evolutionarily old and that cellular homologs of the hypothalamic-pituitary system can be found for instance in insects. To obtain an appreciation of the similarities between insect and vertebrate neurosecretory axes, we review the organization of neurosecretory cell systems in *Drosophila*. Our review outlines the major peptidergic hormonal pathways known in *Drosophila* and presents a set of schemes of hormonal axes and orchestrating peptidergic systems. The detailed organization of the larval and adult *Drosophila* neurosecretory systems displays only very basic similarities to those in other arthropods and vertebrates.

Keywords Insect brain · Insect neurosecretory cells · Peptide hormones · Neuropeptides · Insulin signaling

Introduction

Hormonal signaling regulates developmental processes as well as most aspects of physiology and behavior in the daily life of animals (Elphick et al. 2018; Jékely et al. 2018; Nässel and Zandawala 2019; Norris 1997; Schoofs et al. 2017; Strand 1999; Takei et al. 2015). Many of these hormones are peptides

of a great variety. Both in protostomes (invertebrates) and in deuterostomes (invertebrates and vertebrates), the number of different peptide-encoding genes is high (Elphick et al. 2018; Jékely 2013; Mirabeau and Joly 2013), ranging from about 50 in the fly *Drosophila melanogaster* (Hewes and Taghert 2001; Nässel and Zandawala 2019; Vanden Broeck 2001) to more than 100 in the nematode worm *Caenorhabditis elegans* (Husson et al. 2007; Li and Kim 2008) and humans (See Database¹). However, only a small portion of these is known to act as bona fide circulating hormones. Yet, peptide hormone signaling is diverse and complex and differs over the life cycle.

Peptide hormones commonly act at a high hierarchical level in the animal and play roles as organizers that globally orchestrate various aspects of development, physiology and behavior (Hauser et al. 2006; Jékely et al. 2018; Kim et al. 2017; Nagata and Zhou 2019; Nässel et al. 2019; Nässel and Zandawala 2019; Owusu-Ansah and Perrimon 2015; Schoofs

Electronic supplementary material The online version of this article (<https://doi.org/10.1007/s00441-020-03264-z>) contains supplementary material, which is available to authorized users.

✉ Dick R. Nässel
dnassel@zoologi.su.se

Meet Zandawala
meet_zandawala@brown.edu

¹ Department of Zoology, Stockholm University, Stockholm, Sweden

² Department of Neuroscience, Brown University, Providence, RI, USA

¹ See Neuropeptide database: <http://www.neuropeptides.nl>

et al. 2017; Taghert and Nitabach 2012). In adult physiology, hormones can act on several peripheral targets and simultaneously convey basal organismal states, such as metabolic status, sleep-awake, or arousal, across many central neuronal circuits and thus orchestrate responses to changing internal or external environments (see Jékely et al. 2018; Kim et al. 2017; Martelli et al. 2017; Nässel et al. 2019; Nässel and Zandawala 2019; Schoofs et al. 2017).

The activity of neurosecretory cells that release peptide hormones is controlled by other neurons that relay signals from peripheral sensors or by feedback from peripheral target cells (Ahmad et al. 2019; Delgado et al. 2017; Nässel et al. 2013; Nässel and Vanden Broeck 2016; Romanov et al. 2019; Zavala et al. 2019). Some neurosecretory and endocrine cells possess autonomous sensors that monitor nutritional or energy states to control hormone release (Kim and Rulifson 2004; Nässel and Zandawala 2019; Park et al. 2016; Park et al. 2014). Other controls of neurosecretory cells are constituted by central circuits that orchestrate basal states, or by inputs from the biological clock (Ahmad et al. 2019; Nagy et al. 2019a; Nässel et al. 2019; Nässel and Zandawala 2019; Selcho et al. 2017). After hormone release, target cells can respond by releasing feedback signals to the neurosecretory cells. Thus, a hormonal signaling axis commonly comprises several components and is not unidirectional. In mammals and other vertebrates, several hormonal axes are known, for example, the hypothalamic-pituitary-gonad (HPG) axis or the hypothalamic-pituitary-thyroid (HPT) axis that regulate reproduction and metabolism, respectively (see Le Tissier et al. 2017; Nässel and Larhammar 2013; Norris 1997; Zavala et al. 2019). Each of these is complex with different levels of regulation and feedback.

It has been proposed that the organization of hormonal axes is evolutionarily old (Hartenstein 2006; Raabe 1989; Scharrer 1987) and that cellular homologs of the hypothalamic-pituitary system can be found for instance in the vinegar fly *Drosophila melanogaster* (de Velasco et al. 2007; De Velasco et al. 2004; Park et al. 2011; Wang et al. 2007) and the polychaete worm *Platynereis dumerilii* (Tessmar-Raible 2007; Tessmar-Raible et al. 2007). These proposals were originally based on anatomical similarities in organization and more recently on the expression of a number of transcription factors and hormones in secretory cells that are shared by mammals and these invertebrates but also on the general organization of the neurosecretory cells and their release sites, at least during embryonic development. Thus, the embryonic origin of some neurosecretory cells seems to be conserved over evolution, yet when looking more carefully at the detailed organization of the vertebrate hormonal axes and those in insects and worms in postembryonic animals, the

similarities are not so obvious. For instance, in insects, there are two major groups of brain neurosecretory cells, the lateral neurosecretory cells (LNCs) and the median neurosecretory cells (MNCs), each of which comprises a relatively small number of cells (see Hartenstein 2006; Raabe 1989), generating a rather limited number of peptide hormones (see Nässel and Zandawala 2019). The areas where LNCs and MNCs are located are designated pars lateralis (PL) and pars intercerebralis (PI), respectively. Both LNCs and MNCs have axons that terminate in peripheral release sites in contact with the circulation or with secretory cells that produce additional hormones. Two such termination sites are the corpora cardiaca (CC) and corpora allata (CA) that reside in contact with the anterior blood vessel, the “aorta.” In some insects, like *Drosophila*, the CC and CA are very small and axon terminations from LNCs and MNCs spread out along the anterior aorta as well as the foregut and crop duct (Nässel and Zandawala 2019; Rulifson et al. 2002). In the PL and PI area, there are also other neurons, some of which secrete release-regulating factors that act on the neurosecretory cells, while others seem to be interneurons. One example of PI interneurons with widespread arborizations and actions on multiple target circuits is four neurons producing the neuropeptide SIFamide (SIFa) (Martelli et al. 2017; Terhzaz et al. 2007). We will deal with the roles of these SIFa neurons and other interneurons as well as bona fide neurosecretory cells, in orchestrating physiology and behavior.

To get a better appreciation of the similarities between insect and vertebrate neurosecretory axes, we review here the organization of neurosecretory cells in *Drosophila* and how they are integrated in “signaling circuits” (or axes) from sensory inputs, releasing factors, hormonal targets and feedback. These hormonal regulatory circuits described are commonly based on both anatomical and functional analyses but in some cases only anatomical data are available. In assembling this summary, we also came across several peptidergic systems that are not releasing neurohormones into the circulation but still playing roles in integrating behavior and/or physiology in a global fashion. One example is the SIFa neurons mentioned above. Thus, we summarize both circuits using bona fide peptide hormones and those where peptides act globally by paracrine (and/or synaptic) signaling within the central nervous system (CNS). We also present data on neurosecretory cell systems in the ventral nerve cord and enteroendocrine cells of the intestine.

Our review outlines the major peptidergic hormonal pathways known in *Drosophila* (and other insects) and presents a set of schemes of hormonal axes. We find that the *Drosophila* neurosecretory systems, although embryologically somewhat similar to those of vertebrates or annelid worms, are quite divergent in larvae and adults and display an organization that deviates from the pattern seen in the other phyla.

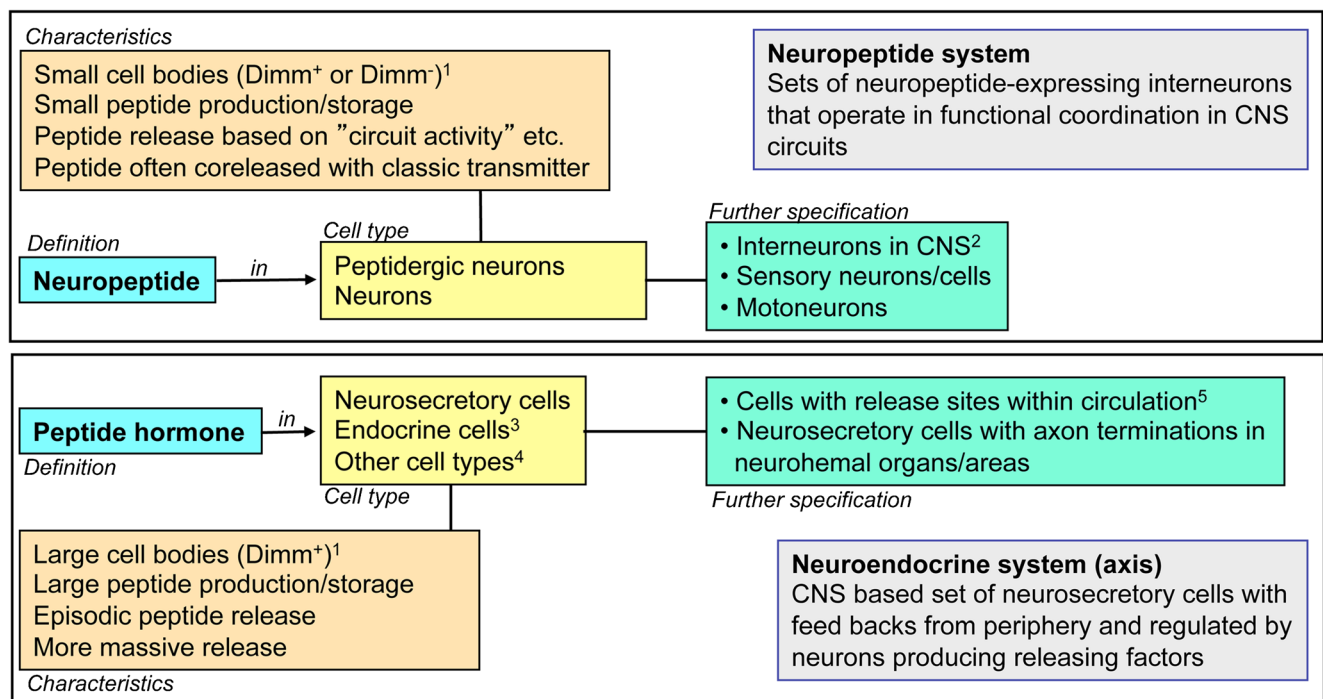


Fig. 1 Definitions of terms used in this review. The top box shows definitions and characteristics of neuropeptide and peptidergic neurons. Dimm (Dimmed) is a transcription factor that is known to specify many, especially larger, peptidergic neurons and neuroendocrine cells (Hewes et al. 2003). The lower box defines peptide hormone and neurosecretory (endocrine) cells. A given peptide can be both a neuropeptide and peptide

hormone; thus, a specific GPCR can be activated by both a neuropeptide (at close range) and a peptide hormone (via circulation), probably at different EC₅₀ values. Notes: ¹Dimm expression is predominantly seen in larger neurons. ²Including neurons producing hormone release-regulating factors. ³And/or secretory cells. ⁴Muscle cells, gland cells and epithelial cells. ⁵Or other body cavities in certain invertebrates

Definitions of terms used in this review

Here we first outline the terms/definitions we are using (Fig. 1). We distinguish here between neuropeptide and peptide hormone. Neuropeptides act at a closer range after release from peptidergic neurons (inter-, sensory-, or motor neurons) and peptide hormones are released into the circulation from neurosecretory cells or endocrine cells. Thus, there are bona fide neuroendocrine (neurosecretory) systems acting systemically (peptide hormones) via the circulation and interneuronal neuropeptide systems acting within the CNS by synaptic (by means of small molecule co-transmitters) or paracrine peptidergic signaling (see Nässel 2009; Zupanc 1996). Some of the peptidergic systems encompass a small number of globally arborizing neurons, such as the four SIFamide (SIFa)-producing brain neurons in *Drosophila* (Martelli et al. 2017; Terhzaz et al. 2007; Verleyen et al. 2004). The neurosecretory cells may additionally signal synaptically with other neurons within the CNS, possibly with small molecule neurotransmitters (see Nässel 2018; Schlegel et al. 2016). Neurons/cells of both types of system can utilize more than one neuropeptide/peptide hormone or even colocalized small molecule neurotransmitters (Hököfelt et al. 2018; Hököfelt et al. 1987; Nässel 2018; Nusbaum et al. 2017; Svensson et al. 2019). Furthermore, it has been shown in *Drosophila* that peptide

hormones such as insulin-like peptides (ILPs) released from brain neurosecretory cells (insulin-producing cells; IPCs) act not only as circulating hormones on peripheral targets but also signal to brain neurons, probably in a paracrine fashion (Bader et al. 2013).

The activity of neurosecretory cells is controlled by various neurons, or by secreted factors from peripheral cells and tissues that relay signals mediating information about the internal and external environment (Ahmad et al. 2019; Lin et al. 2019; Nässel and Vanden Broeck 2016; Nässel and Zandawala 2019; Owusu-Ansah and Perrimon 2014, 2015; Rajan and Perrimon 2011). We will discuss these neuronal pathways and the release-inducing and inhibiting factors they utilize, as well as interorgan signaling.

Finally, some of the neurosecretory cells (or even peptidergic neurons) have been shown to be intrinsically nutrient sensing (Dus et al. 2015; Kreneisz et al. 2010; Oh et al. 2019; Park et al. 2014; Yang et al. 2018; Yurgel et al. 2019); others receive signals from nutrient-sensing cells in the intestine or fat body (Alfa et al. 2015; Geminard et al. 2009; Kwak et al. 2013; Nässel and Zandawala 2019; Rajan and Perrimon 2012; Ren et al. 2015; Sun et al. 2017) and this mechanism is utilized for regulation of hormone release. The peptides discussed in this review are listed in Table 1, which also provides a list of the acronyms used in the text and figures.

Table 1 Peptide acronyms, precursor genes and peptide functions in *Drosophila*. Excluding gut EECs (instead, see Table 2). Note that this is not a comprehensive list of *Drosophila* peptides but a list of peptides discussed in this review

Acronym	Peptide name	Precursor gene ¹	Function ²
AKH	Adipokinetic hormone	CG1171	Hormone, NRF
AstA	Allatostatin A	CG13633	Hormone, NRF
AstB/MIP	Allatostatin B	CG6456	NM
AstC	Allatostatin C	CG14919	NM ³
Burs α	Bursicon α	CG13419	Hormone, NRF
CAPA	Capability (capa 1, 2, PK 1)	CG15520	Hormone
CCAP	Crustacean cardioactive peptide	CG4910	NM
CCHa1	CCHamide 1	CG14358	Hormone ³ , NM
CCHa2	CCHamide 2	CG14375	Hormone, NRF
CRZ	Corazonin	CG3302	Hormone, NRF
DH31	Diuretic hormone 31	CG13094	Hormone, NM
DH44	Diuretic hormone 44	CG8348	Hormone, NM
DMS	<i>Drosophila</i> myosuppressin	CG6440	NM ⁴
DILP1–8	<i>Drosophila</i> insulin-like peptides	See note ⁵	Hormone, NRF ⁶
DSK	<i>Drosophila</i> sulfakinin	CG18090	Hormone ⁷ , NM
EH	Eclosion hormone	CG5400	Hormone, NM
ETH	Ecdysis-triggering hormone	CG18105	Hormone, NRF
Hugin-PK	Hugin-pyrokinin (PK 2)	CG6371	Hormone, NRF
ITP	Ion transport peptide	CG13586	Hormone, NM
LK	Leucokinin	CG13480	Hormone, NRF
Lst	Limostatin	CG8317	NRF
NPF	Neuropeptide F	CG10342	NM, NRF
OK-B	Orcokinin B	CG13565	Hormone ³ , NM
PDF	Pigment-dispersing factor	CG6496	Hormone, NRF
PTTH	Prothoracicotropic hormone	CG13687	Hormone, NRF
RYa	RYamide	CG40733	Hormone
SIFa	SIFamide	CG4681	NM
sNPF	Short neuropeptide F	CG13968	NRF
TK	Tachykinin	CG14734	NRF

¹ Gene annotation

² Specifies whether hormone, neuromodulator (NM), or neuromodulator and release-regulating factor (NRF). Note that hormonal functions are in several cases inferred from indirect evidence. For details, see Nässel and Zandawala et al. (2019)

³ Not clear whether also hormone

⁴ Acts on crop and may also be released as a hormone (hormonal function not yet established)

⁵ DILP1 = CG13173, DILP2 = CG8167, DILP3 = CG14167, DILP4 = CG6736, DILP5 = CG33273, DILP6 = CG14049, DILP7 = CG13317, DILP8 = CG14059

⁶ The DILPs have different functions; all are hormones but only some (e.g., DILP2 and DILP7) appear to act as neuromodulators or release-regulating factors

⁷ Although DSK has been identified in IPCs, its presence in neurohemal areas associated with the brain has not been determined. Yet a possible hormonal role has been proposed (Söderberg et al. 2012)

Organization of the neuroendocrine system in the fly brain compared to that of mammals

The insect neuroendocrine system was first explored by neurosecretion staining techniques and it was pointed out in these earlier studies that the organization of LNC, MNC, CC and CA

in insects displays general similarities to the vertebrate hypothalamus and pituitary (see (Raabe 1989; Scharrer 1987; Scharrer and Scharrer 1963)). In very general terms, this may still be valid to an extent in that the embryonic origin/lineage of neurosecretory cells and the expression of certain transcription factors in these cells during development show some

similarities (Clements et al. 2008; de Velasco et al. 2007; Hartenstein 2006; Wang et al. 2007; see also Tessmar-Raible 2007; Tessmar-Raible et al. 2007). However, when analyzing the detailed anatomical organization in adults, as well as the complement of peptide hormones and other signaling compounds, the similarities are somewhat less obvious. Thus, during postembryonic development, the neurosecretory systems differentiate to different degrees to display taxon-specific differences in complexities. Furthermore, the number of peptides in the neurosecretory systems that are conserved during evolution is relatively small. We shall get back to details of the similarities and differences towards the end of the review but

show the general organization of fly and mammalian neurosecretory systems in Fig. 2 to remind the reader. Note that in contrast to mammals, insects do not have a closed circulatory system. Instead they possess an open-ended dorsal vessel (consisting of an anterior aorta and a posterior contractile heart) aiding in circulating the hemolymph (the insect equivalent of blood) through the body cavities, or coelom (see Hillyer and Pass 2020).

The fly brain and associated neurosecretory cells, endocrine organs and neurohemal release sites are shown in Fig. 2(a, b). The cephalic neurosecretory cells in insects, including *Drosophila*, are arranged in three major parts of the brain, the

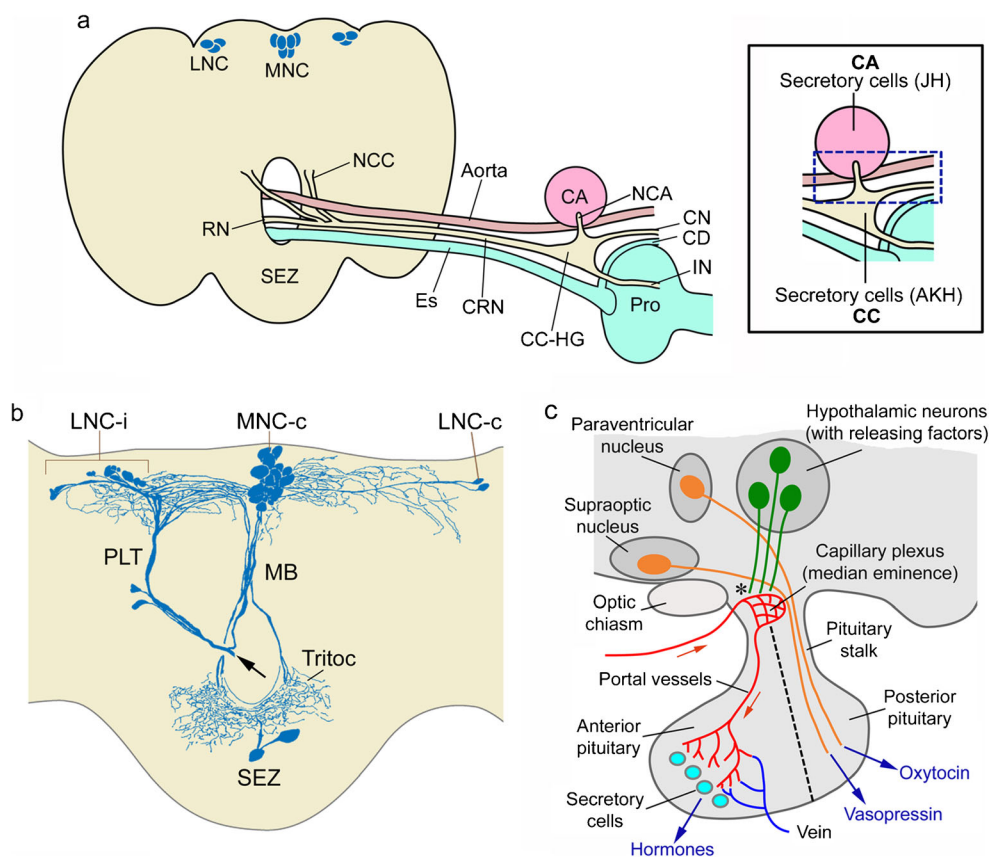


Fig. 2 Organization of the neuroendocrine system in the fly brain compared to mammals. **a** Schematic of the brain and retrocerebral complex in flies. Lateral (LNC) and median (MNC) neurosecretory cell groups send their axons via a pair of nerves (nervii corpora cardiaca, NCC) to the fused CRN (cardiaca-recurrent nerve), which supplies the corpora cardiaca (CC) and hypocerebral ganglion (HG), as well as the corpora allata (CA) via the paired NCA (nervii corpora allata) nerves. Axons continue via the HG into the crop nerve (CN), which follows the crop duct (CD) and branch over the crop and an intestinal nerve (IN) that supplies branches over the proventriculus (Pro) and anterior midgut. These nerve branches contain axon terminations of the LNCs, MNCs and subesophageal zone (SEZ) neurosecretory cells and form neurohemal release sites/areas. Axon terminations from these cells are also found along the aorta. Other abbreviations: Es, esophagus; RN, recurrent nerve. The inset shows an enlarged view of the CC-CA region, indicating that both contain secretory cells producing hormones, adipokinetic hormone

(AKH) and juvenile hormone (JH). The blue box indicates the area where axon terminations of LNCs and MNCs are in contact with the circulation (neurohemal area). **b** Frontal view of a blowfly brain where one NCC was backfilled with cobalt chloride (at the arrow) into the posterior lateral tract (PLT) and median bundle (MB). Neurosecretory cells were revealed in contralateral MNCs (MNC-c) and LNCs (LNC-c) as well as ipsilateral LNCs (LNC-i) and the SEZ. Note extensive overlapping arborizations dorsally and in tritocerebrum, Tritoc. These two figures (a, b) were redrawn and slightly altered from Shiga et al. (2000) with permission from Dr. Sakiko Shiga. Panel b appeared in a similar form in Nässel and Larhammar (2013). **c** Schematic of a generalized mammalian hypothalamus-pituitary. The asterisk indicates where hormone release-regulating factors enter the capillary plexus of the portal system (“neurohemal” area). Hormone-producing secretory cells are found in the anterior pituitary and the hormones released into the circulation (see text for hormones). A more detailed scheme is shown in Fig. 12

MNC, LNC and subesophageal zone (SEZ), also known as gnathal ganglia. Secretory cells in the CC produce the peptides adipokinetic hormone (AKH) and limostatin (Lst) and cells in the CA produce juvenile hormone (JH), a sesquiterpenoid (Fig. 2a, inset). Release of hormones occurs from axon terminations and endocrine cells in specific regions, neurohemal areas, in contact with the open circulation (Fig. 2a inset). The organization of the mammalian hypothalamus-pituitary is shown for comparison in Fig. 2(c). Note that in mammals, the factors regulating release act via the circulation (a capillary plexus) on the secretory cells in the anterior pituitary, whereas in insects such capillaries do not exist and regulation is by neurons/neuroendocrine cells contacting secretory cells in the brain or CC/CA. We discuss the release-regulating factors and hormones, as well as neurosecretory cell systems in the ventral nerve cord and periphery, including intestinal endocrine cells in later sections.

Distribution of peptide hormones in neurosecretory cells in the adult *Drosophila* brain

Peptides that have been identified in different neurosecretory cell groups of *Drosophila* are listed in Table 2 and some of these neurosecretory cells are shown in Fig. 3. Note that we list peptides such as short neuropeptide F (sNPF) and tachykinin (TK) without considering the fact that they are encoded on precursors that generate several paracopies (peptide isoforms). The total number of MNC/LNCs in the brain of *Drosophila* is not clear but is likely to be around 60 cells. However, the number of neurosecretory cells in *Drosophila* with identified peptide hormones is even smaller. In adult flies, the MNC group (both hemispheres) has 24 cells, of 3–4 types and the LNC group in one hemisphere has 12 cells (of 2–3 types). These cell types are based on content of peptides determined using immunohistochemical approaches, sometimes in combination with Gal4 expression. Recent advances in single-cell transcriptomics may alter these numbers of cell types in the near future, as we begin to identify subtypes within supposedly homogenous groups of cells (Davie et al. 2018; Trapnell 2015); see also next section. There are LNCs with (1) colocalized ion transport peptide (ITP), sNPF and TK (Kahsai et al. 2010) and (2) those with corazonin (CRZ) and sNPF (Diesner et al. 2018; Kapan et al. 2012) of which one subset also expresses a fructose receptor and another a glucose transporter (Miyamoto et al. 2012; Oh et al. 2019). MNCs of different types produce (1) diuretic hormone 44 (DH44) (Cabreró et al. 2002; Dus et al. 2015), (2) dromyosuppressin (DMS) (Nichols 2003) and (3) colocalized insulin-like peptides (DILP1, 2, 3, 5) (Brogiolo et al. 2001; Liu et al. 2016; Nässel and Vanden Broeck 2016) and (4) a subpopulation of these produce colocalized drosulfakinin (DSK) (Söderberg

et al. 2012). As mentioned above, there are likely additional cells in each group where the peptide is yet to be identified since backfilling the cut axons of the nerve to CC-CA with tracer (e.g., cobalt chloride) renders more cells, at least in a blowfly species (Fig. 2b; Shiga et al. 2000). One set of subesophageal neurosecretory cells produce Hugin-PK (pyrokinin-2; PK-2) (Diesner et al. 2018; Melcher and Pankratz 2005; Neupert et al. 2007) and another set CAPA-PK (pyrokinin-1; PK-1) (Diesner et al. 2018; Kean et al. 2002). Details of several of these peptidergic neurosecretory cells are shown in Fig. 3(b–h). Some of the cells shown in Fig. 3(a) communicate with each other. Thus, it has been shown that the DLP neurons act on IPCs via sNPF to regulate DILP release (Kapan et al. 2012; Oh et al. 2019). The same cells release CRZ as a circulating hormone (Kubrak et al. 2016). This suggests that a set of cells can both control DILP release and liberate hormonal CRZ. In Fig. 3(b–f), the anatomical substrate for DLP action on IPCs is shown. Six MNCs that produce DH44 are shown in Fig. 3(g). The IPCs are also under control by neurons releasing leucokinin (LK) and both IPCs and ITP-producing neurons (ITPn) express LK receptor (Fig. 3h–k) (Zandawala et al. 2018b). Action of LK on IPCs has been demonstrated (Yurgel et al. 2019; Zandawala et al. 2018b) but so far we have no evidence for action on the ITPn. These were examples of some *Drosophila* hormones and factors regulating their release. We will get back to this in more detail below but we want to point out here that the distribution of neurons regulating MNCs and LNCs is spread out in the brain and not organized in clear modules as in mammals within the hypothalamus-pituitary axis (HP; see Fig. 2c). In the next section, we use the IPCs as an example of organization of a hormonal axis including release-regulating neurons and endocrine cells, as well as peripheral feedbacks and interorgan communication.

MNCs: regulation of insulin-producing cells in *Drosophila* and interorgan communication

There are 14 IPCs located in the pars intercerebralis (MNC group) and it has been assumed that these cells function as a group, i.e., that regulatory factors act on all IPCs. However, it seems that there are three subtypes of IPCs with respect to nutrient sensing: (1) IPCs with autonomous glucose sensing, (2) IPCs without glucose sensing and (3) those that receive inputs from two glucose-sensing DLPs (designated CNs) (Oh et al. 2019). Another heterogeneity is that an IPC subpopulation co-expresses DSK (Söderberg et al. 2012). The exact sites where specific regulatory inputs to the IPCs appear has not been established, although some connections between IPCs and other neurons have been analyzed in the first instar larvae of *Drosophila* (Schlegel et al. 2016). Based on anatomy and dendritic markers, it is likely that inputs to IPCs are on two

Table 2 Neuropeptides and peptide hormones in neurosecretory cells, endocrine cells and orchestrating neurons of *Drosophila*

Peptide	Cell/neuron	Region	Stage ¹	Function
Brain neurosecretory cells and peripheral secretory cells				
DILP1,2,3,5, DSK	IPCs	MNC/PI	L/A ²	Metabolism, feeding, stress responses, reproduction
DH44, DILP2	DH44-PI ³	MNC/PI	L/A	Feeding, osmotic homeostasis
DMS	DMSn	MNC/PI	L/A	Crop motility
CRZ, sNPF	DLP	LNC/PL	L/A	IPC and CC regulation, metabolism, stress responses
ITP, TK, sNPF	ITPn	LNC/PL	L/A ⁴	Osmotic homeostasis, metabolism, stress responses
PTTH	PTTHn	LNC/PL	L/P ⁵	Regulation of ecdysone production, light avoidance
Hugin-PK	Hugin cells	SEZ	L/A	Feeding, locomotion
CAPA	SEn	SEZ	L/A	?
EH	VM	Brain	L/P ⁵	Ecdysis behavior, light avoidance
AKH	CC	CC	L/A	Metabolism, food seeking
Lst	CC	CC	A	Metabolism, food seeking
DILP6	Adipocyte	Fat body	L/A	Growth, IPC regulation
CCHa2	Adipocyte	Fat body	L/A	IPC regulation
ETH	Inka cells	Trachea	L/P/A	Ecdysis, JH production, reproduction, courtship memory
Brain neurons that partake in orchestration				
SIFa	SIFan	PI	L/A	Feeding, mating, sleep
LK	LHLK	Brain	L/A	osmotic homeostasis, metabolism, sleep, thirst-related learning
PDF	PDFtri	Tritoc.	A ⁵	Adult eclosion?
PDF, sNPF	sLNv	Clock	L/A ⁶	Clock neuromodulator, activity, sleep
TK, MIP	ICN	Brain	L/A	IPC regulation, growth
AstA	AstAn, PLP	Brain	A	Feeding, sleep
MIP	MIPn	Brain	A	Feeding, olfaction, sleep, reproduction
Thoracico-abdominal ganglion neurosecretory cells ⁷				
dFMRFa	Tv	T1-T3	L/A	Locomotion, flight
CAPA	Va	AbdG	L/A	Osmotic homeostasis, chill coma recovery
LK, DH44	ABLK	AbdG	L/A	Osmotic homeostasis, tracheal air-filling (at ecdysis)
Burs α	–	AbdG	L/A	Cuticle tanning, wing expansion
GPB 5	–	AbdG	L/A	Osmotic homeostasis?
PDF	–	AbdG	L/A	Motility renal tubules ⁸ , defecation in larvae
DH31	–	AbdG	L/A	Osmotic homeostasis?
Orcokinin A	–	AbdG	L/A	?
Thoracico-abdominal ganglion efferent neurons (could be neurosecretory)				
DILP7	dMP2	AbdG	L/A	Gut function, reproduction
ITP	iag	AbdG	L/A	Osmotic homeostasis?
Luqin (RYamide)	–	AbdG	L/A	Osmotic homeostasis?
Proctolin	–	AbdG		Gut contraction?
AstA	–	AbdG		Gut contraction?
Midgut enteroendocrine cells (EECs) ⁹				
AstA	EECs P	Midgut	L/A	Signal to AKH cells and IPCs?
AstB/MIP	EECs M, P	Midgut	L/A	?
AstC	EECs A, M, P	Midgut	L/A	?
Bursicon α	EECs P	Midgut	A	Signal to AKH cells (indirect)
CCHa1	EECs P	Midgut	L/A	?
CCHa2	EECs A, P	Midgut	L/A	Signal to IPCs
DH31	EECs P	Midgut	L/A	Signal to R tubules, gut
NPF	EECs A, M	Midgut	L/A	Signal to R tubules, gut
Orcokinin B	EECs M	Midgut	L/A	?
TK	EECs A, M, P ¹⁰	Midgut	L/A	Lipid metabolism in gut

Acronyms for peptides are given in Table 1. References are given in the text of the review. The regions are as follows: *PL*, pars lateralis; *PI*, pars intercerebralis; *SEZ*, subesophageal zone; *Tritoc.*, tritocerebrum; *T1-T3*, thoracic neuromeres 1–3; *AbdG*, abdominal ganglion

¹ L, larval; A, adult

² DILP1 not present in larvae (only in pupae and early adult)

³ Also designated DH44n

⁴ No TK in larvae

⁵ Undergo apoptosis in early adult (after adult eclosion)

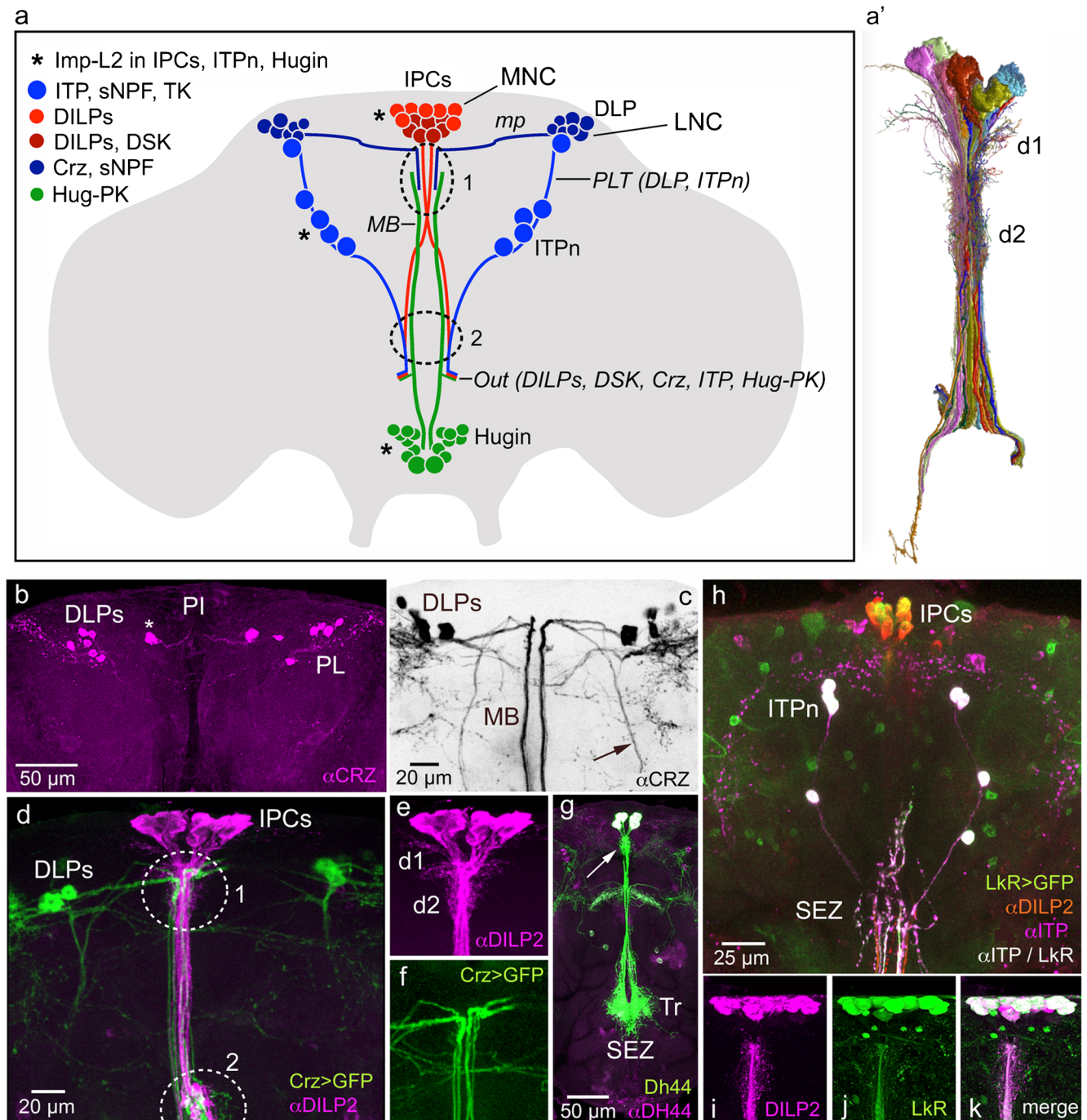
⁶ No sNPF in larval neurons

⁷ All functions only shown for adults

⁸ Leads to increased secretion in tubules

⁹ A, anterior; M, median; and P, posterior midgut

¹⁰ Also in anterior hindgut



sets of arborizations in the pars intercerebralis and one set in tritocerebrum (see Fig. 3a). The two sets of IPC “dendrites,” longer and shorter, are seen in Fig. 3(a', e) (see also Supplementary Fig. 1).

As mentioned above, some of the IPCs in adult flies are intrinsically nutrient sensing (glucose, amino acids) and they additionally receive regulatory signals from brain neurons, CC, the intestine and the fat body (Fig. 4a) (Ahmad et al. 2019; Nässel and Vanden Broeck 2016; Nässel and Zandawala 2019; Oh et al. 2019). The brain neuromodulators

and other factors are shown in Fig. 4(b) and this figure also lists the different receptors expressed by the IPCs. It is apparent that the IPCs receive an impressive amount of regulatory inputs with at least 14 receptors expressed in the adult fly (Ahmad et al. 2019; Nässel et al. 2015; Nässel and Vanden Broeck 2016; Nässel and Zandawala 2019). These factors include GABA, serotonin, dopamine, octopamine and several neuropeptides. There are additional factors regulating IPCs in the larva: AKH, Dawdle (Daw), Glass bottom boat, stunted and Eiger, growth-blocking peptide (Agrawal et al. 2016;

Fig. 3 Distribution of a selection of peptide hormones in neurosecretory cells in the adult *Drosophila* brain. (a) Schematic of some of the lateral (LNC) and median (MNC) neurosecretory cell systems in the adult fly brain. Two sets of LNCs are shown: the DLPs that produce corazonin (CRZ) and short neuropeptide F (sNPF) (Kapan et al. 2012) and the ITPn that produce ion transport peptide (ITP), sNPF and tachykinin (TK) (Kahsai et al. 2010). One set of MNCs is depicted, the insulin-producing cells (IPCs) that produce insulin-like peptides (DILP1, 2, 3 and 5) of which a subpopulation also produces sulfakinin (DSK) (Söderberg et al. 2012). A set of neuroendocrine cells (Hugin cells) in the subesophageal zone (SEZ) produces the peptide pyrokinin (Hug-PK); a subset of these constitutes neurosecretory cells (Melcher and Pankratz 2005). Axons from these four cell groups run via the median bundle (MB) or posterior lateral tract (PLT), exit the brain (at Out) via the NCC (nervii corpora cardiaca; not shown) and they reach the retrocerebral complex where axon terminations are in contact with the circulation. The DLPs utilize sNPF as a factor that regulates release of DILPs and AKH (Kapan et al. 2012; Oh et al. 2019) and the ITPn possibly use TK and sNPF as releasing factors and Hugin cells may employ Hug-PK to regulate release of other peptides (Schlegel et al. 2016). Interactions between the cell systems shown probably occur at the sites indicated by 1 and 2. It was shown that three of these cell types (marked with asterisks) express the protein ImpL2 and that the IPCs signal to the ITPn and Hugin cells with DILP2 via the insulin receptor in an Imp-L2-dependent fashion (Bader et al. 2013). mp, medially projecting axons of LNCs. (a*) A set of MNCs (including IPCs) reconstructed from serial electron microscopic sections of *Drosophila* hemibrain. d1 and d2 two sets of presumed dendrites. This figure was compiled from data in neuPRINT (<https://neuprint.janelia.org>) (Clements et al. 2020; Xu et al. 2020; Zheng et al. 2018). (b) There are seven pairs of CRZ expressing DLPs in pars lateralis (PL). Note that in this specimen one larger pair of cells (asterisk) is slightly dislocated medially towards pars intercerebralis (PI). (c) The DLPs (inverted image; CRZ immunolabeling, α CRZ) have axons running through the median bundle (MB) and a lateral tract (arrow). (d) The DLPs (green) impinge on the IPCs (magenta) in encircled areas 1 and 2. (e, f) Details of IPCs and branches from DLPs. D1 and d2, two sets of IPC dendrites. (g) Six median neurosecretory cells producing diuretic hormone 44 (DH44) have dendrites at the arrow and axon branches in the tritocerebrum (Tr) and subesophageal zone (SEZ) rendered by *Dh44*-Gal4-driven GFP and antiserum to DH44. (h) Triple labeling with antisera to ITP (magenta/white), DILP2 (red) and *Lkr*-Gal4-driven GFP (leucokinin receptor; green) reveals ITP neurons (ITPn) and IPCs. This indicates that the LkR is expressed on both ITPn and IPCs. (i–k) The IPCs express the leucokinin receptor (LkR) seen with *Lkr*-Gal4-driven GFP and anti-DILP2. Panel (a) is updated from Nässel et al. (2013) with data from several of the papers cited above. Panel (b) is from Kubrak et al. (2016), (c–f) are from Kapan et al. (2012), (g) from Zandawala et al. (2018a) and (h–k) from Zandawala et al. (2018b), with permission from the publishers

Ballard et al. 2010; Delanoue et al. 2016; Ghosh and O'Connor 2014; Kim and Neufeld 2015; Koyama and Mirth 2016). In addition, 20-hydroxyecdysone (20E) acts on IPCs to regulate DILP production (Buhler et al. 2018). The factors from the fat body and intestine are released in response to nutrients such as dietary sugar, proteins (amino acids) and lipids (Ahmad et al. 2019; Owusu-Ansah and Perrimon 2014).

In adults, the IPCs are central to the regulation of metabolism, appetite and food seeking as shown in Fig. 5(a). LNCs (DLPs) use sNPF to activate IPCs and inhibit AKH-producing cells (APCs) in CC and CRZ to signal systemically to the fat

body (Kapan et al. 2012; Kubrak et al. 2016; Oh et al. 2019). The altered DILP and AKH signaling affects metabolism, gustatory sensitivity and circuits that regulate food seeking (Bharucha et al. 2008; Jourjine et al. 2016; Yu et al. 2016). Feedback to IPCs and APCs is derived from the fat body and enteroendocrine cells (EECs) of the intestine, respectively (see Ahmad et al. 2019; Nässel and Vanden Broeck 2016; Scopelliti et al. 2014). This is an example where a set of LNCs, part of which are nutrient sensing (Miyamoto et al. 2012; Oh et al. 2019), activates MNCs and regulate food seeking, feeding and metabolism. Since both LNCs and MNCs (i.e., DLPs and IPCs) display autonomous nutrient sensing, the final output from the IPCs is the sum of the inputs from DLPs and their own sensing.

Another pathway that involves IPCs regulates metabolism-sleep interactions (Fig. 5b). A pair of brain interneurons (LHLK) producing the neuropeptide leucokinin (LK) acts on IPCs and other neuronal circuits in the brain regulating sleep. The LHLKs are glucose sensing and this LK signaling requires LK receptor expression on IPCs and affects starvation-mediated changes in sleep (Yurgel et al. 2019). The LHLKs are in turn regulated by clock neurons (Cavey et al. 2016). IPCs and specifically DILP2, are also implicated in compensatory regulation of sleep rebound after starvation-induced sleep deprivation (Brown et al. 2020). Furthermore, the nutrient-sensing LHLKs are part of an LK system in the brain and ventral nerve cord (totally about 24 LK neurons) that together regulate physiological processes such as diuresis, feeding, metabolism and organismal sleep activity (Yurgel et al. 2019; Zandawala et al. 2018b). It can be added that the LHLKs also partake in a memory circuit that involves dopaminergic neurons and mushroom body (MB) neurons (Senapati et al. 2019). Thirst and hunger signals to LHLKs are relayed to dopaminergic neurons that in turn affect expression of water-related memory and sugar-related memory in the MBs. In the same circuit, neurons producing serotonin and NPF relay hunger signals to specific dopaminergic inputs to the MBs (Senapati et al. 2019). Thus, LHLKs play a critical role in several aspects of daily physiology of flies, relaying hunger and thirst signals to affect metabolism, sleep and memory formation and do so by interacting with IPCs and MBs.

A third pathway involving IPCs regulates ovary and egg maturation (Fig. 5c). *Drosophila* can enter adult reproductive diapause when environmental conditions are adverse (Kubrak et al. 2014; Saunders et al. 1989; Tatar and Yin 2001). Activation of IPCs by sNPF from clock neurons blocks reproductive diapause in the fly (Fig. 5c) (Nagy et al. 2019a). This block is likely to result from decreased production of vitellogenin from fat body, altered metabolism and hormonal effects on ovary maturation. These could be direct effects of IIS on ovaries and/or indirect via juvenile hormone (JH) from CA. It has also been shown that IIS is required for upregulating the

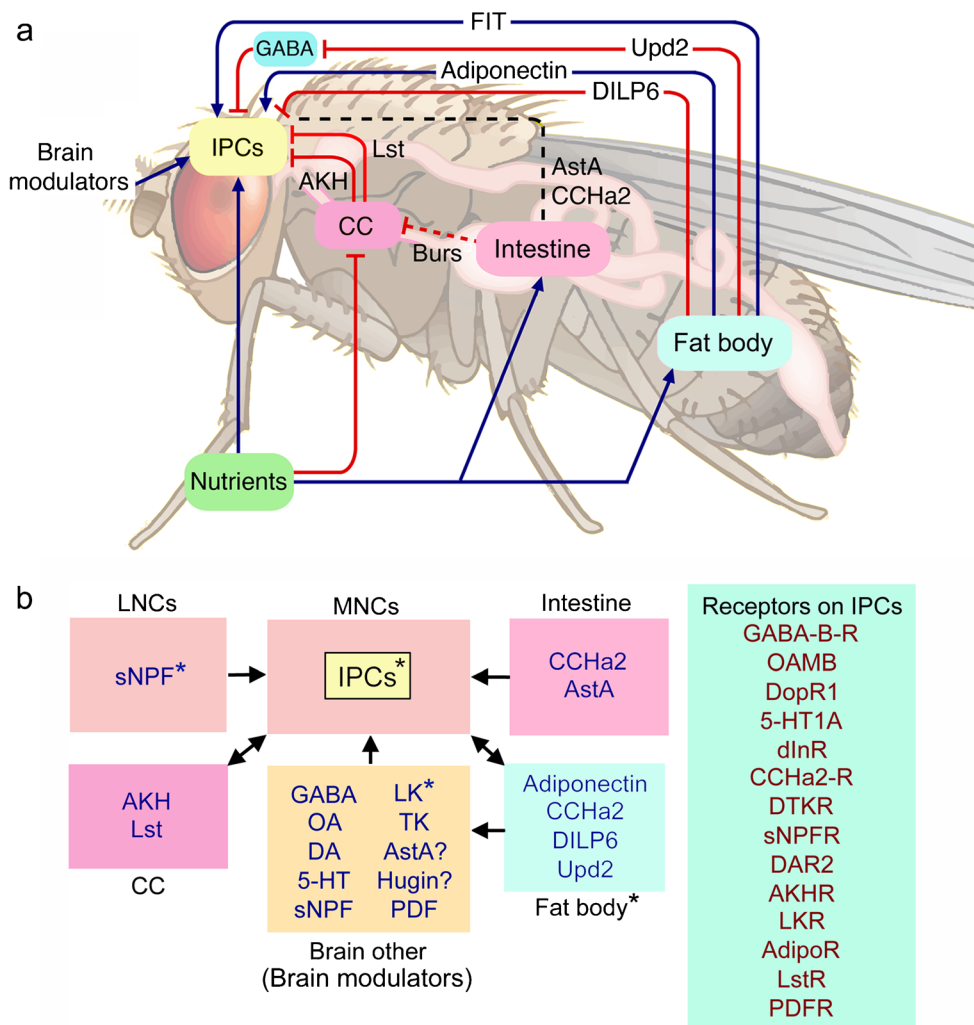


Fig. 4 Interorgan communication: regulation of insulin-producing cells (IPCs) in *Drosophila*. **a** Scheme with factors that regulate insulin-producing cells (IPCs) in the adult brain of *Drosophila*. Blue arrows depict stimulatory inputs and red bars show inhibitory ones. Dashed black line indicates incompletely known mechanisms. The IPCs are also regulated by neurons in the brain (brain modulators; see panel **b** for details). The fat body is nutrient sensing and releases adiponectin-like polypeptide, Upd2 (unpaired-2), and DILP6 after carbohydrate intake. Adiponectin and DILP6 act directly on the IPCs. Upd2 acts (inhibitory) on GABAergic brain neurons and thereby lifts inhibition of the IPCs. Another factor FIT (female-specific independent of transformer) is a signal released from the fat body after a protein meal. The corpora cardiaca (CC), under conditions of low sugar, releases limostatin (Lst) and adipokinetic hormone (AKH) and thereby inhibits release of DILPs. The intestine has nutrient-sensing enteroendocrine cells and there is release of at least some peptide hormones into the circulation. Two gut

peptides have been shown to act on IPCs, allatostatin A (Asta), and CCHamide2 (CCHa2), whereas bursicon (Burs) from the intestine acts on brain neurons, which in turn act on CC to diminish AKH production (dashed line indicates indirect action via brain). Acronyms or peptides are given in Table 1. For references to the original data, see the text. This figure is slightly modified from Nässel and Zandawala et al. (2019) with permission. **b** Block diagram of factors acting on IPCs and receptors expressed on these cells. The IPCs are nutrient sensing, as are peptidergic cells in the brain and fat body (asterisks). Insulin-like peptides (DILPs) released from IPCs act on CC and fat body and regulate AKH and DILP6 release, respectively. Receptor acronyms: GABA-B-R, metabotropic GABA receptor; OAMB, octopamine receptor (mushroom body); DopR1, dopamine receptor 1; 5-HT1A, serotonin receptor 1A; dInR, insulin receptor; DTKR, TK receptor; DAR2, AstA receptor 2; AdipoR, adiponectin receptor

female remating rate after the post-mating refractory period in *Drosophila* (Wigby et al. 2011). Therefore, it seems that the nutrient-responsive IIS pathway is critical for regulating female mating behavior in response to availability of relevant food sources. In summary, at least three different hormonal axes involving IPCs and DILPs have been described that regulate (1) appetite, feeding and metabolism; (2) sleep metabolism interactions; and (3) mating, reproduction and diapause.

MNCs: functions of DH44-producing neurons in *Drosophila*

DH44 was first identified as hormone regulating secretion in Malpighian tubules (Cabrerero et al. 2002; Kataoka et al. 1989b) but, as we will show here, it is now known that it plays a multitude of roles in *Drosophila* physiology (see Nässel and Zandawala 2019). There are six MNCs that express DH44 and

their morphology resembles that of IPCs (Figs. 3g and 6a). The six DH44 neurons are amino acid and glucose sensing (Dus et al. 2015; Yang et al. 2018). In the adult fly, these six MNCs also express DILP2 (Ohhara et al. 2018) but the functional role of DILP in these cells is unclear.

The DH44 neurons appear to be part of the output from the circadian clock in *Drosophila* (Fig. 6a, b). These neurons receive inputs from DN1 clock neurons (transmitter unknown), which in turn are activated by sLN_v clock neurons that use either sNPF or PDF as neuromodulators (King et al. 2017). The DH44 neurons activate DH44 receptor 1 on peptidergic Hugin neurons in the subesophageal zone (SEZ) that in turn have connections to motor circuits in the ventral nerve cord that drive locomotor activity (Fig. 6a, b). This pathway in conjunction with the profusely arborizing SIFamide neurons also modulates feeding rhythms (Dreyer et al. 2019; King et al. 2017) (Fig. 6b).

Furthermore, the nutrient-sensing DH44 neurons stimulate feeding and defecation (excretion) (Dus et al. 2015; Yang et al. 2018) as shown in Fig. 6(c). The DH44 neurons act on circuits in the brain regulating feeding and hormonally released DH44 acts on DH44-R1-expressing muscles in the intestine to induce excretion. Finally, in female flies, it has been shown that the DH44 neurons release DH44 that acts on DH44-R1-expressing efferent neurons in abdominal ganglia that innervate the uterus and thereby triggers sperm release from spermatheca (Lee et al. 2015) (Fig. 6d).

In summary, the DH44-expressing MNCs regulate (1) locomotor activity and feeding rhythms, (2) feeding and excretion and (3) sperm release from spermatheca. It is not clear whether these represent three different axes or if there is an interactive link between these functional pathways.

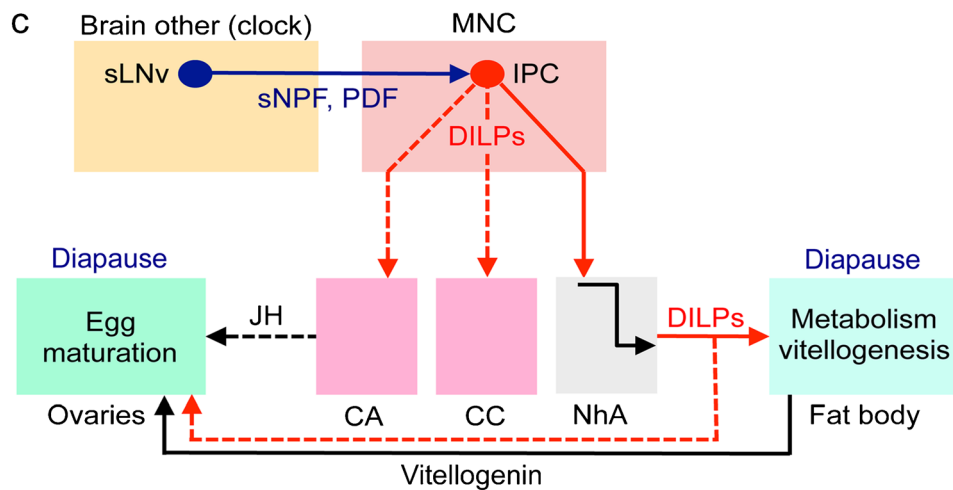
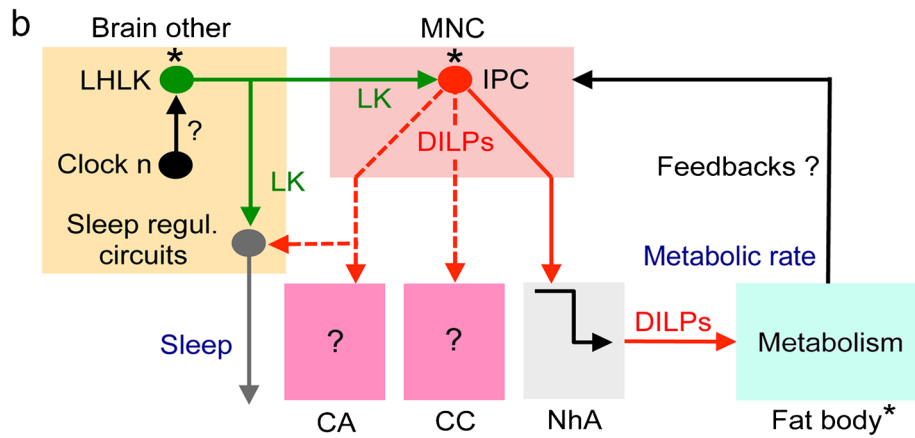
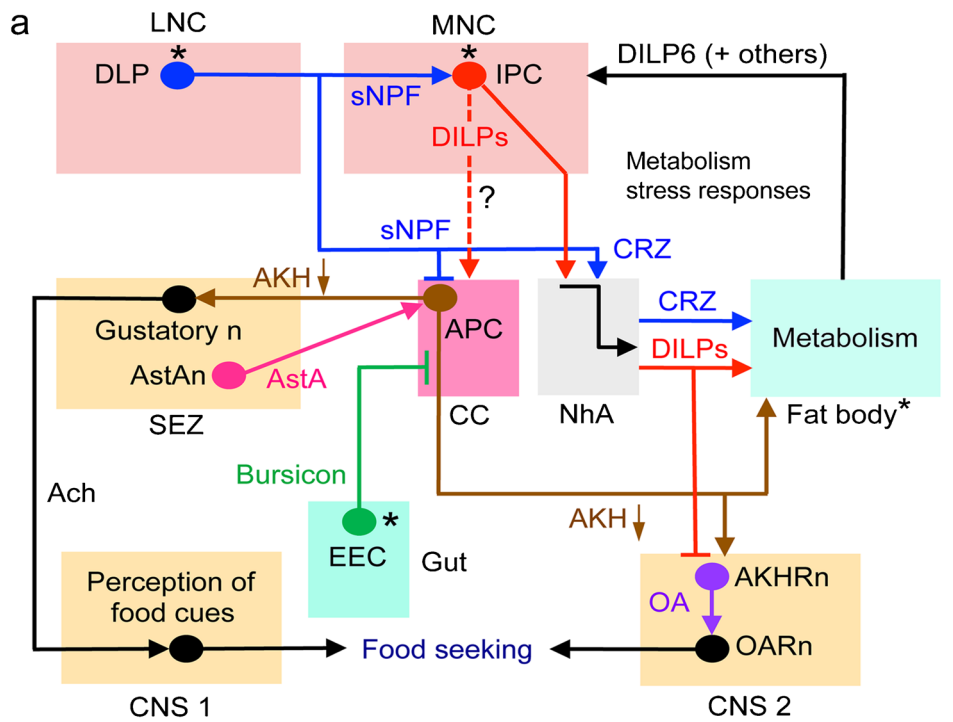
Diverse hormonal and peptidergic systems regulate feeding and other associated behaviors

Regulation of feeding is complex in *Drosophila* and relies on several sets of peptidergic neurons spread out in the brain and SEZ and is not exclusively associated with the LNC-MNC cell groups (Lin et al. 2019; Nagata and Zhou 2019; Nässel and Zandawala 2019). The major sets of peptidergic neurons involved in feeding are shown in Fig. 7(a). These produce the peptides allatostatin A (AstA), crustacean cardioactive peptide (CCAP), CRZ, DILPs, DH44, Hugin-PK, ITP, LK, NPF, SIFa, sNPF and TK. A few of these are neurosecretory cells in the MNC (IPC and DH44-PI) and LNC groups (ITPn and DLP) but several other neurons are located in distinct brain regions (LHLK, PLP, NPFa, NPFb, SIFa, Hugin and SELK neurons); most are interneurons but a few of the Hugin cells are neurosecretory cells. Some of these neurons are autonomously nutrient sensing (DH44-PI, IPCs, DLPs and LHLKs;

asterisks in Fig. 7a) (Dus et al. 2015; Kreneisz et al. 2010; Miyamoto et al. 2012; Park et al. 2014; Yurgel et al. 2019) and some receive inputs from gustatory neurons (Hugin cells) (Melcher and Pankratz 2005). Interactions between a few of these neurons have been described: LHLKs and DLPs provide inputs to IPCs, using sNPF and LK, respectively (Kapan et al. 2012; Yurgel et al. 2019; Zandawala et al. 2018b); SIFa neurons receive inputs from Hugin cells (Hug-PK), MIP-expressing neurons (MIP) and probably IPCs (DILPs) and DLPs (CRZ, sNPF) (Martelli et al. 2017). Finally, IPCs seem to signal to ITPn, Hugin cells and AKH-producing cells in CC in an Imp-L2- and dInR-dependent fashion (see Fig. 3a; Bader et al. 2013) but the function of these interactions is not yet known.

Since regulation of feeding in *Drosophila* and other insects has been extensively reviewed recently (Audsley and Weaver 2009; Lin et al. 2019; Nagata and Zhou 2019; Nässel and Zandawala 2019; Pool and Scott 2014), we will just make some remarks here that refer to Fig. 7. A few sets of neurons appear central in regulation of appetite, satiety and feeding (and metabolism). Some of these are the neurosecretory cells (see Fig. 7) such as IPCs that regulate metabolism, appetite and satiety with DILPs and DSK (Broughton et al. 2005; Kim et al. 2017; Nässel et al. 2013; Root et al. 2011; Semaniuk et al. 2018; Söderberg et al. 2012; Yu et al. 2016); DH44-PI that stimulate food intake with DH44 (Dus et al. 2015; Yang et al. 2018); DLPs that use CRZ to regulate metabolism and indirect feeding (Kubrak et al. 2016); and ITPn that suppress feeding through ITP (Galikova et al. 2018). The endocrine cells of CC produce AKH and limostatin to modulate gustation (stimulate sweet and inhibit bitter) and stimulate appetite and feeding (Bharucha et al. 2008; Inagaki et al. 2014; Jourjine et al. 2016; Lee and Park 2004; Yu et al. 2016).

Other peptidergic signals involved in feeding and metabolism are mediated by different interneurons distributed in different brain areas (Fig. 7a). These interneuronal peptides are AstA, CCAP, Hugin-PK, LK, NPF and SIFa. It is possible that also other interneurons that are not shown in Fig. 7(a) utilize peptides, such as DH44, DSK, NPF, sNPF and TK to regulate feeding. AstA regulates IPCs, inhibits feeding and promotes sleep (Chen et al. 2016b; Hentze et al. 2015; Hergarden et al. 2012; Wang et al. 2012a). The two CCAP neurons regulate a set of two NPF neurons (NPFa) and thus modulate sugar preference and stimulate feeding (Williams et al. 2020). In larvae, Hugin neurons receive inputs from gustatory neurons and inhibit feeding (Melcher and Pankratz 2005); in adults, these neurons relay hunger signals to SIFa neurons and thereby affect appetite and feeding (Martelli et al. 2017). LHLK neurons use LK to regulate IPCs but also other neuronal circuits to regulate metabolism and sleep, as well as water- and sugar-associated memory formation (Senapati et al. 2019; Yurgel et al. 2019; Zandawala et al. 2018b). NPF neurons have been extensively studied in stimulation of



◀ **Fig. 5** Schemes depicting hormonal axes involving insulin-producing cells (IPCs) in adult flies. Note that in this and the following figures with schematic circuits/axes, only one cell of each type is depicted for simplicity. **a** Adult DLP (LNC) pathway with sNPF and corazonin (CRZ) and regulation of glucose homeostasis, food search and stress responses via IPCs and AKH-producing cells (APCs). Asterisks indicate neurons/cells that are cell autonomously nutrient sensing. The DLPs in the LNC group produce CRZ and sNPF and supply axon terminations to IPCs and APCs. The DLP-derived sNPF regulates IPCs and APCs in corpora cardiaca (CC) and thereby affects glucose homeostasis and metabolic stress responses (Kapan et al. 2012; Oh et al. 2019), whereas CRZ is released into the circulation from the neurohemal area (NhA) associated with CC, the foregut and anterior aorta (Kubrak et al. 2016). CRZ acts on the fat body to regulate metabolic stress and homeostasis (Kubrak et al. 2016). sNPF activates IPCs to increase DILP release and inhibits the APCs to decrease AKH release and thereby affects carbohydrate homeostasis (Kapan et al. 2012; Oh et al. 2019). The signaling from IPCs to APCs in CC (dashed arrow) specifically in response to sNPF has not been demonstrated but DILPs do act on APCs, at least in larvae (Bader et al. 2013). AKH is also known to regulate the sensitivity of AKH receptor-expressing sweet-sensing gustatory neurons that mediate sweet taste (Bharucha et al. 2008; Joujine et al. 2016). Note that it is not clear whether AKH acts on gustatory neuron processes within the SEZ or their cell body/dendrites in the periphery. Enteroendocrine cells (EECs) of the midgut release bursicon that indirectly inhibits APCs in CC resulting in decreased release of AKH and thus affect glucose homeostasis (Scopelliti et al. 2014). Another regulator of IPCs and APCs is allatostatin A (AstA) but the neuronal pathway mediating this has not been clearly shown (Hentze et al. 2015). Thus, it might be that instead of SEZ neurons, AstA is derived from gut EECs. The fat body may feed back to IPCs by means of DILP6 and other factors such as Upd2, adiponectin and CCHA2 (see Fig. 6, Ahmad et al. 2019; Nässel and Zandawala 2019). Finally, DILPs and AKH regulate octopamine (OA)-producing neurons (AKHRn) that express AKH and DILP receptors. These AKHRn in turn act on octopamine receptor-expressing neurons (OARn) to activate locomotion (Yu et al. 2016). Thus, AKH regulates sensitivity of taste neurons and activates locomotion to increase food search. AKH action also encompasses regulation of activity/rest, depending on time of day (Pauls et al. 2020). Ach, acetylcholine; EEC, enteroendocrine cell; **b** the IPCs are regulated by leucokinin (LK)-producing neurons, LHLK, in the lateral horn of the brain. The LHLKs, which are under influence of clock neurons (Cavey et al. 2016), also mediate starvation-dependent changes in sleep (Yurgel et al. 2019). The nutrient-sensing LHLKs are part of an LK system in the brain and ventral nerve cord that also regulates physiological processes such as diuresis, metabolism, and organismal activity (Zandawala et al. 2018b). **c** Activation of IPCs blocks reproductive diapause (i.e., blocks ovarian arrest). The clock neurons, sLN_v, use sNPF and PDF to activate the IPCs, which leads to inhibition of diapause, likely due to DILP-mediated activation of vitellogenesis in fat body and egg maturation in ovaries (Nagy et al. 2019b). This probably also involves DILP stimulation of corpora allata (CA) and production of juvenile hormone (JH). Inputs to IPCs from another set of clock neurons (DN1s; not shown here) were shown in another study to regulate feeding rhythm and metabolism (Barber et al. 2016)

larval feeding (Shen and Cai 2001; Wang et al. 2013; Wu et al. 2005) but these neurons are also important in adult feeding (Chung et al. 2017; Pu et al. 2018; Tsao et al. 2018; Williams et al. 2020). SIFa neurons are central in balancing feeding, sleep and reproductive behavior (Dreyer et al. 2019; Martelli et al. 2017; Terhzaz et al. 2007) and will be dealt with in more detail below. Unspecified neurons producing sNPF are known

to regulate feeding in larvae (Lee et al. 2004), as well as in adults (Tsao et al. 2018), where food search is also regulated via sNPF modulation of olfactory circuits (Root et al. 2011). To summarize, several sets of interneurons/neurosecretory cells and peptides regulate appetite and feeding; however, only in a few cases are the interactions between these different neurons known. These will be shown next.

As an example of interactions between neurons regulating feeding, we show the inputs and outputs of SIFa neurons (Figs. 7b and 8a). The four neurons producing SIFa have arborizations that are spread throughout the brain and coordinate appetitive behavior but also inhibit mating and sleep (Dreyer et al. 2019; Martelli et al. 2017; Terhzaz et al. 2007). The SIFa neurons are regulated by peptidergic satiety inputs (MIP) and hunger inputs (Hugin-PK). In turn, the SIFa neurons act on gustatory and olfactory sensory neurons, as well as sets of neurons expressing the transcription factor Fruitless that regulate sex-specific behavior. Furthermore, they act on MNCs in the pars intercerebralis that signal with DH44 and DILPs, as well as specific neuronal circuits regulating sleep. The SIFa neurons may also receive inputs from neurons that play roles in feeding and metabolism that produce CRZ, DILPs, DSK and sNPF (Martelli et al. 2017). Thus, the SIFa neurons seem to be at the center of sensing nutrient status to balance opposing behaviors: appetitive behavior versus mating and sleep (Dreyer et al. 2019; Martelli et al. 2017).

A set of neurons (ITPn) producing ITP have recently been shown to play a central role in regulation of feeding, drinking and excretion (Galikova et al. 2018). The ITPn are LNCs and are likely to act by systemic release of ITP, possibly acting on the hindgut, Malpighian tubules and fat body (Fig. 8b). Indirect evidence suggests that the IPCs signal to the ITPn in an Imp-L2- and dInR-dependent fashion (Bader et al. 2013). The ITPn also produce sNPF and TK and knockdown of these peptides in ITPn increased the sensitivity to starvation and desiccation (Kahsai et al. 2010) indicating that the ITPn are important for metabolism and water homeostasis.

Neurosecretory systems in the ventral nerve cord

Insects and other arthropods have segmental ganglia in the thorax and abdomen. In *Drosophila*, these ganglia are fused into one ganglionic mass, the thoracico-abdominal ganglia (or ventral nerve cord, VNC), resulting in three thoracic and nine abdominal neuromeres. In most insects studied, there are bilateral neurosecretory cells in each neuromere or ganglion (Nässel 1996; Nässel et al. 1994; Raabe 1989). The localization of peptidergic neurosecretory cells in the *Drosophila*

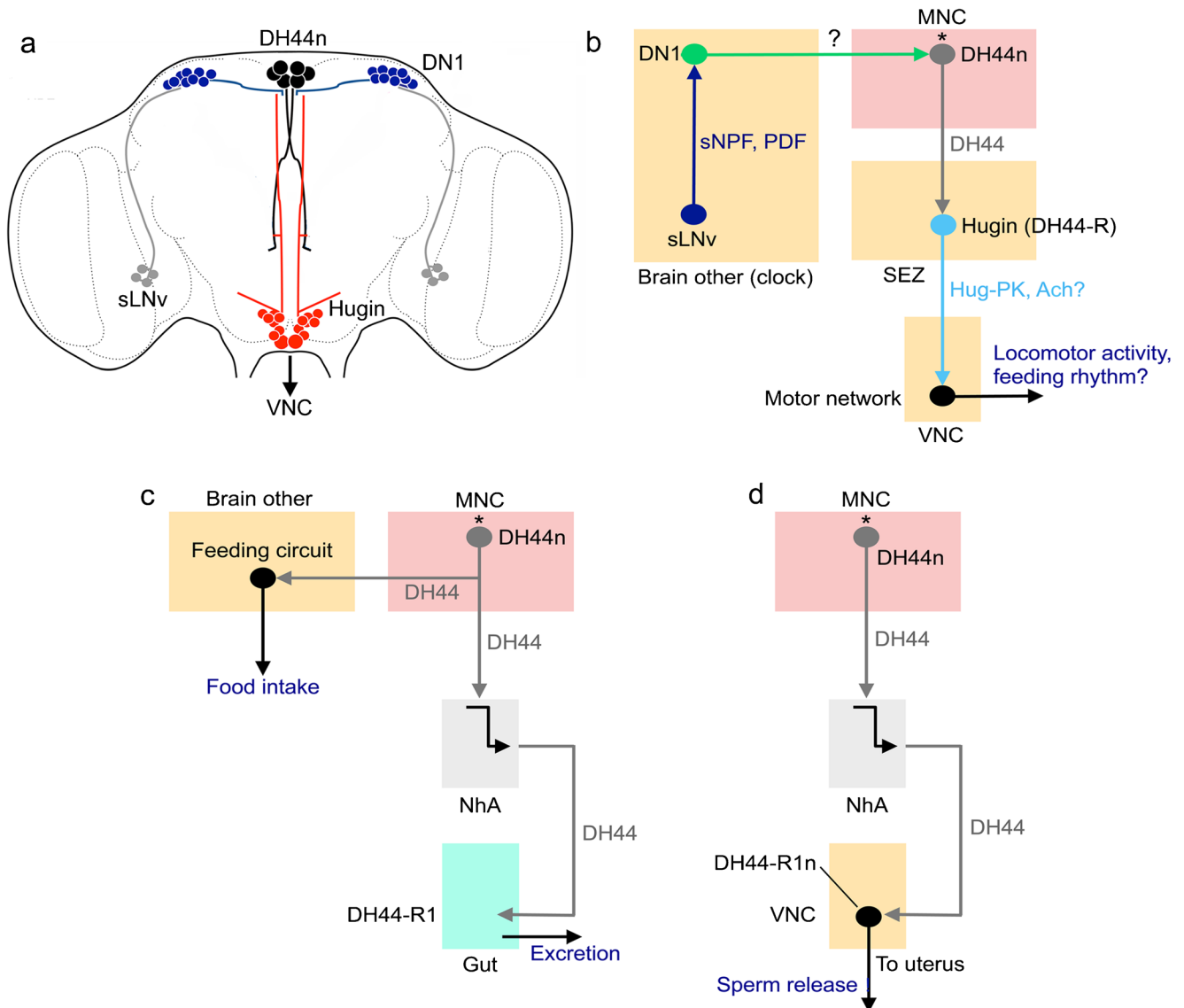


Fig. 6 Schemes depicting hormonal axes involving DH44-producing median neurosecretory cells (DH44n) in adult flies. **a** Localization of DH44 neurons (DH44n), Hugin cells, and the clock neurons DN1 and sLNv in the adult fly brain. The sLNv produce sNPF and PDF and the DN1 are heterogeneous and produce a variety of neuropeptides (see Abruzzi et al. 2017). **b** Block diagram depicting interactions between the neurons shown in panel **a**. The sLNv neurons act (via either sNPF or PDF) on DN1s to activate (substance not known) DH44 neurons that in turn act on a subset of DH44 receptor-expressing (DH44-R) Hugin cells (King et al. 2017). The Hugin cells utilize Hugin-pyrokinnin (Hug-PK) and/or acetylcholine (Ach) to activate motor neuron circuits in the ventral nerve cord (VNC). This pathway regulates locomotor activity and in conjunction with SIFamide neurons also modulates feeding rhythms

(Dreyer et al. 2019; King et al. 2017). Note that the DH44n (asterisk) are amino acid and glucose sensing (Dus et al. 2015; Yang et al. 2018). Novel data show that the Hugin cells receive inputs from sleep-promoting neurons of dorsal fan-shaped body (dfb) and that Hugin cells also act on sLNvs (not shown in diagram) (King et al. 2020). This circuit links homeostatic sleep drive and the circadian system. **c** The nutrient-sensing DH44 neurons induce feeding and defecation (excretion) (Dus et al. 2015). Hormonally released DH44 acts on DH44-R1-expressing muscles in the intestine to induce excretion. The DH44n also act on circuits in the brain regulating feeding. **d** In female flies, the DH44n release DH44 that acts on DH44-R1-expressing efferent neurons that innervate the uterus and thereby induces sperm release from spermatheca (Lee et al. 2015)

VNC is shown in Fig. 9(a, b) and the cell types and peptides are listed in Table 2.

In flies, there are multiple types of neurosecretory cells in each abdominal neuromere (Fig. 9a, b), whereas in each of the thoracic neuromeres only one pair of cells has been identified (Fig. 9b). These thoracic cells, designated Tv

neurons, express FMRFamide immunoreactivity and the gene encoding extended FMRFamides (Lundquist and Nässel 1990; Schneider et al. 1993a; Schneider et al. 1993b). The Tv neurons in *Drosophila* and other flies supply axon terminations to a plexus in the dorsal neural sheath over the entire ventral nerve cord (Lundquist and

Nässel 1990; Nässel et al. 1988). In larvae, the six Tv neurons have axon terminations in segmental spherical neurohemal organs associated with dorsal median nerves (Nässel et al. 1988). In hemimetabolous insects, similar structures were named perivisceral organs or perisymphatic organs (see Predel 2001; Raabe 1989). So far, no other peptides have been identified in the Tv neurons or the dorsal axonal plexus (Nässel and Zandawala 2019; Predel et al. 2004; Wegener et al. 2006). Note that the mesothoracic neuromere has a second pair of FMRFamide-expressing ventral neurons (Fig. 9b) but it has not been established whether these supply axons to the dorsal neurohemal release site. The functional role of hormonal FMRFamide has not been clearly established in *Drosophila*, although it is known that the peptide modulates contractions in larval body wall muscles (Dunn and Mercier 2005; Hewes et al. 1998) and in the adult flight activity (Ravi et al. 2018). Wild-type flies respond to heat stress and certain infections by increased sleep; FMRFamide (and receptor) mutant flies display impaired sleep in response to these stressors (Lenz et al. 2015). In blowflies, FMRFamide stimulates secretion in salivary glands (Duve et al. 1992).

In abdominal neuromeres, there are several types of peptidergic neurosecretory cells in each neuromere (Fig. 9a, b). In neuromeres A2–A4, three pairs of Va neurons express *Capa*-gene products (CAPA1 and CAPA2 and CAPA-PK) (Kean et al. 2002; Terhzaz et al. 2015), 11 pairs of ABLKs produce LK (Cantera and Nässel 1992; de Haro et al. 2010) of which 3–4 anterior pairs co-express DH44 (Zandawala et al. 2018a), 4–5 pairs of cells produce GPA2/GPB5 (Sellami et al. 2011), six pairs express DH31 (Mandel et al. 2018), four pairs orcokinin A (OK-A) (Chen et al. 2015) and seven pairs produce bursicon (α and β) (Luan et al. 2006; Peabody et al. 2008). All of these neurosecretory cells have axons with terminations on surface of abdominal nerves and/or body wall muscle.

The functions of abdominal neurosecretory cells are shown in Fig. 9 (c–e). Several cells release peptides that regulate water and ion homeostasis (Fig. 9c). These peptides are LK, DH44, CAPA1 and CAPA2 and DH31 (Kean et al. 2002; Radford et al. 2002; Terhzaz et al. 1999; Terhzaz et al. 2015; Zandawala et al. 2018a). Orcokinin, GPB5, RYamide, and PDF might also play roles in diuresis (Sellami et al. 2011; Talsma et al. 2012; Veenstra and Khammassi 2017). Receptors for DH44, CAPA1 and CAPA2 and DH31 are expressed in principal cells, whereas the LK receptor is expressed in stellate cells of the Malpighian tubules, suggesting that these peptides regulate ion transport (see Nässel and Zandawala 2019). CAPA peptides from Va neurons act on the tubules to influence ionic and osmotic homeostasis thereby mediating desiccation tolerance and chill coma recovery (MacMillan et al. 2018; Terhzaz et al. 2015). CAPA neurons,

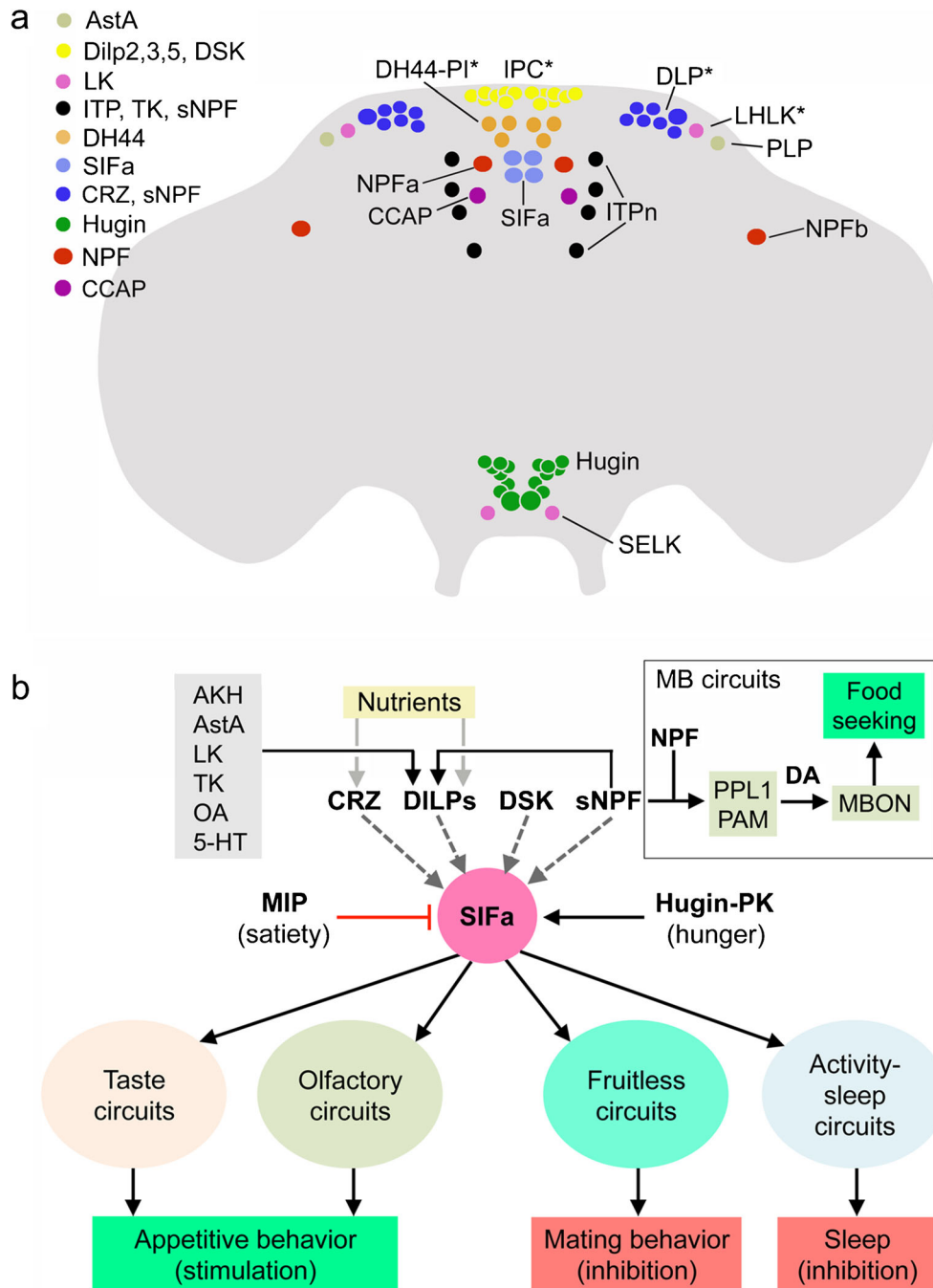
in turn, are modulated by systemic CRZ from the LNCs. Abdominal neurons expressing LK, some of which also express DH44, are activated following water intake and likely stimulate diuresis and excretion (Zandawala et al. 2018a; Zandawala et al. 2018b). The hormonal functions of DH31 from abdominal neurosecretory cells are still not known (Mandel et al. 2018). Additionally, LK and GPB5 receptors are also expressed in the hindgut (Selcho et al. 2018; Zandawala et al. 2018a); however, the effects of LK and GPB5 on excretion or reabsorption by the hindgut have not yet been examined.

In pharate adult flies, bursicon and CCAP, together with DILP7-producing neurons, are involved in cuticle tanning and cuticle plasticization (wing expansion) (Fig. 9d). Bursicon, released from 14 abdominal neurons, stimulates wing expansion and cuticle tanning following adult ecdysis (Luan et al. 2006). The regulation of wing expansion by bursicon is hormonal, whereas the effect on cuticle tanning is mediated indirectly through DILP7-expressing neurons (transmitter unknown in tanning) (Flaven-Pouchon et al. 2020). Abdominal neurons expressing bursicon, in turn, are regulated by other inputs from the brain (likely CCAP), as well as potential autocrine feedback from bursicon that induces cell apoptosis (Peabody et al. 2008).

Several peptides are produced in efferent abdominal neurons that “innervate” the hindgut, or reproductive tract (Fig. 9e); neurons with AstA (Yoon and Stay 1995), proctolin (Anderson et al. 1988), DILP7 (Cognigni et al. 2011; Miguel-Aliaga et al. 2008), ITP (Dirksen et al. 2008), PDF (Nässel et al. 1993) and RYamide (Veenstra and Khammassi 2017) supply axons to the hindgut and rectum. DILP7 also supplies the female reproductive tract (Yang et al. 2008). The functional roles of these neurons have barely been investigated. PDF from abdominal efferents was shown to act at a distance on PDF receptor expressed on ureter muscles (at the base of Malpighian tubules) to induce contractions (Talsma et al. 2012), probably aiding secretion in the tubules. DILP7 acts in selection of egg-laying sites (Yang et al. 2008) and may also interact with IPCs to regulate food intake (Cognigni et al. 2011). For the other peptides, one might guess that they play roles in gut function, such as modulation of contractions (AstA and proctolin) and possibly water reabsorption (ITP and RYa).

Intestinal peptides

The digestive tract of animals contains enteroendocrine cells (EECs), which represent another source of circulating hormones. Mammalian gut EECs express glucagon-like peptide-1 (GLP-1), gastric inhibitory polypeptide (GIP), ghrelin and cholecystokinin (CCK), which regulate various processes including regulation of hormone secretion, gut motility, nutrient homeostasis and feeding (Campbell and Drucker 2013;



Gribble and Reimann 2019; Liddle 1997; Tong et al. 2010). Various dietary nutrients, as well as other hormones, trigger the EECs to release their contents into circulation. In *Drosophila*, the larval and adult midgut is a source of 11 different peptides (Table 2, Supplemental Fig. 2a) (Chen et al. 2016a; Reiher et al. 2011; Veenstra 2009; Veenstra et al. 2008; Veenstra and Ida 2014; Lemaitre and Miguel-Aliaga 2013). Some of these peptides are colocalized in different subpopulations of the EECs (Veenstra 2009; Veenstra et al. 2008; Veenstra and Ida 2014). In spite of the gut

representing a rich source of peptides, studies investigating their functions in *Drosophila* are limited (Supplemental Fig. 2b). In adults, TK- and DH31-expressing EECs can be activated by dietary proteins and amino acids (Park et al. 2016; Song et al. 2014). One might predict that these peptides, as well as NPF, can influence ion and water transport through their receptors that are expressed in Malpighian tubules (Chintapalli et al. 2012; Coast et al. 2001; Söderberg et al. 2011). Furthermore, DH31 stimulates midgut muscle contractions (LaJeunesse et al. 2010), TK influences lipid production

◀ **Fig. 7** Schemes depicting hormonal systems that regulate feeding and associated behaviors. **a** Distribution of cell bodies of peptidergic neuroendocrine cells in the brain of *Drosophila* that play roles in feeding. These are neurosecretory cells in MNC (IPC and DH44-PI) and LNC groups (ITPn and DLP) and interneurons located in distinct brain regions (LHLK, PLP, NPF, SIFa, Hugin and SELK); a few of the Hugin cells are neurosecretory cells. The neuron groups indicated with asterisks are nutrient sensing (only a subset of the DLPs) and the Hugin cells in the subesophageal zone receive gustatory inputs. The peptides released from these cells are shown in the legend in the upper left part of the figure (acronyms as in Table 1). Note that also circuits associated with the mushroom bodies (see box in panel **b**) are linked to some of the peptidergic systems shown and are involved in regulation of food seeking and feeding (Tsao et al. 2018). See text for literature references. **b** Four neurons producing SIFamide (SIFa) have arborizations that are widely spread throughout the brain. These SIFa neurons coordinate appetitive behavior but also influence mating and sleep (Dreyer et al. 2019; Martelli et al. 2017; Terhzaz et al. 2007). The SIFa neurons are under direct regulation by peptidergic satiety inputs (myoinhibitory peptide, MIP) and hunger inputs (Hugin-PK). SIFa neurons act on gustatory and olfactory sensory neurons, as well as sets of neurons expressing the transcription factor Fruitless, known to regulate sex-specific behavior. They also act on MNCs in the pars intercerebralis that signal with diuretic hormone 44 and insulins (not shown in the figure), as well as specific neuronal circuits regulating sleep. Anatomical studies (reconstitution of split-GFP) suggest that the SIFa neurons also receive inputs from neurons that play roles in feeding and metabolism that produce corazonin (CRZ), DILPs, sulfakinin (DSK) and sNPF (Martelli et al. 2017). The IPCs are in turn regulated by sNPF and several other factors shown in the gray box in the upper left. Mushroom body-associated circuits (in box) are also involved in the regulation of food seeking; sNPF and NPF act on different sets of dopaminergic (DA) neurons (PPL, PAM), which in turn act on specific sets of mushroom body output neurons (MBONs) that induce food-seeking behavior (Tsao et al. 2018). This figure is updated from Nässel et al. (2019), which was based on data from Martelli et al. (2017) and Tsao et al. (2018)

by the gut enterocytes (Song et al. 2014), bursicon alpha indirectly downregulates AKH signaling via *Lgr2*-expressing brain neurons (Scopelliti et al. 2014) and AstA, possibly from the gut EECs, reduces feeding and increases sleep (Chen et al. 2016b) (Supplemental Fig. 2b). In addition, larval CCHa2 targets IPCs and regulates food intake (Ren et al. 2015; Sano et al. 2015). Thus, functional studies on EEC-derived peptides are limited, largely due to the lack of tools to specifically and selectively target the signaling from the gut.

Neurosecretory systems in the larval CNS

In the *Drosophila* larva, the complement of peptidergic neurosecretory cells is rich (Fig. 10a). At this stage, the CC and CA, together with the prothoracic gland form a circular tissue, designated the ring gland, which surrounds the aorta (see Hartenstein 2006; Siegmund and Korge 2001). Clusters of LNCs and MNCs produce the same peptides as seen in adults, although the numbers of cells within the different clusters in some cases vary between the larva and adults. In addition, larvae have cells

producing prothoracicotropic hormone (PTTH) and eclosion hormone (EH) (Fig. 10a), which undergo apoptosis after adult eclosion and are therefore no longer present in adult flies. The names of the neurosecretory cells with their peptides are given in Fig. 10(a). Larval neurosecretory cells of the brain have axon terminations in neurohemal areas in the ring gland, along the aorta and foregut (Siegmund and Korge 2001) (Fig. 10b). Most of the thoracic and abdominal neurosecretory cells send axons to neurohemal organs in dorsal median nerves (Fig. 10b), designated perivisceral organs (PVO), or perisymphatic organ (Predel 2001; Predel et al. 2003; Raabe 1989; Santos et al. 2007). Some of the cells (producing GPA1/GPB5, LK, and DH44) have axon terminations in body wall muscle or along the gut (dMP2 producing DILP7) (Fig. 10b) as shown in Cantera and Nässel et al. (1992), Miguel-Aliaga et al. (2008), Sellami et al. (2011) and Zandawala et al. (2018a). Not shown in Fig. 10 are efferent abdominal neurons innervating the hindgut that produce PDF, AstA and ITP (Dircksen et al. 2008; Nässel et al. 1993; Yoon and Stay 1995). Overviews of distribution of peptidergic neurons in the larval thoracic-abdominal ganglia are presented in Nässel and Zandawala et al. (2019), Park et al. (2008) and Santos et al. (2007).

As seen below, most of the larval neurosecretory cells play roles in developmental processes such as growth regulation, timing of developmental transitions and coordination of ecdysis motor behavior at molts. However, it is also likely that many of the systems regulate daily behavior and physiology. Such functions are barely studied in larvae.

Larval growth and maturation are mainly regulated by DILPs and PTTH (Fig. 11a–c). DILPs from the IPCs influence metabolism and consequently growth, through hormonal actions on the fat body and the nutrient-dependent TOR pathway (Fig. 11a) (see Brogiolo et al. 2001; Ikeya et al. 2002; Oldham and Hafen 2003). Both CRZ and sNPF from DLPs are required for regulation of IPCs (and growth) under nutrient restriction (Megha et al. 2019). PTTH, on the other hand, acts on the prothoracic glands via its receptor Torso to stimulate ecdysone production, which affects developmental timing and growth (Rewitz et al. 2009; Rewitz et al. 2013). Both the IPCs and PTTH neurons are stimulated by AstA (from the subesophageal zone) through its receptor DAR1 (Deveci et al. 2019). In addition, PTTH neurons are activated by CRZ from the DLPs and sNPF from the clock neurons sLNv (Fig. 11a) (Imura and Shimada-Niwa 2020; Selcho et al. 2017) and the IPCs are inhibited by TK from the ICN neurons, which are in turn activated by growth-blocking peptide (GBP) from the fat body in a nutrient-dependent fashion (Fig. 11b) (Meschi et al. 2019). The sLNv input to PTTH neurons is part of a circuit that synchronizes the central clock to that in the prothoracic gland and thereby times the eclosion (Selcho et al. 2017). A recent study also suggested action of NPF directly on the prothoracic gland

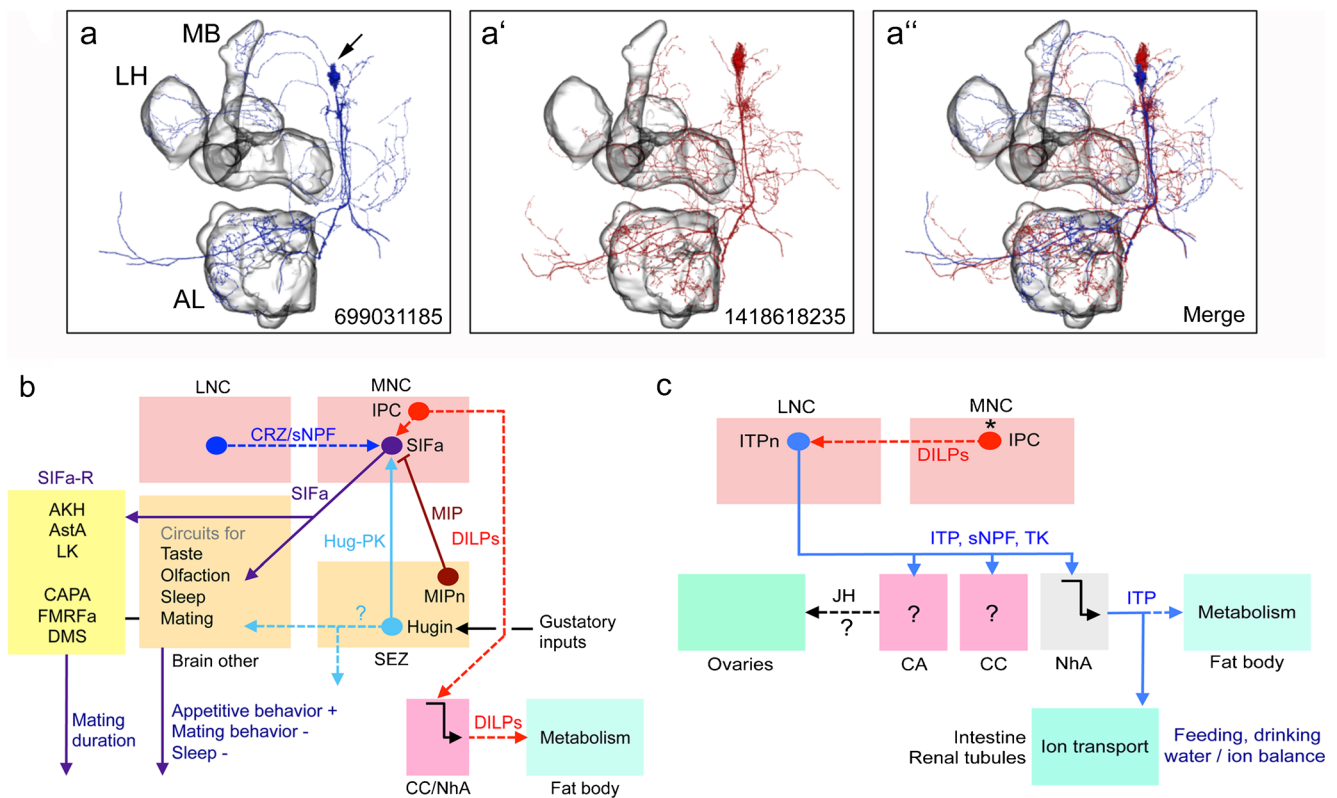


Fig. 8 Schemes depicting circuits/axes involving SIFamide- and ion transport peptide-producing interneurons (ITPn) in adult flies. (a, a') Reconstructions of two SIFa neurons from serial electron microscopic sections (combined in the third panel, a''). MB, mushroom body, LH, lateral horn, AL, antennal lobe. The numbers identify the neurons in the database. These panels were compiled from data in neuPRINT (<https://neuprint.janelia.org>) (Clements et al. 2020; Xu et al. 2020; Zheng et al. 2018). (b) SIFamide (SIFa)-producing interneurons are central in regulating appetitive behavior and decreasing sleep and mating behavior. As also shown in Fig. 7, the SIFa neurons are modulated by neurons producing MIP, Hugin-PK and possibly CRZ/sNPF. The SIFa neurons also target SIFa receptor-expressing peptidergic neurons (SIFaR) in the CNS. Of

these, AKH-, AstA- and LK-expressing neurons induce shorter mating duration and CAPA-, FMRFa- and DMS-expressing ones induce longer mating (Wong et al. 2019). Dashed lines indicate that actions have not been shown experimentally in the context of SIFa signaling. Peptide acronyms are as in Table 1. (c) Ion transport peptide (ITP) is produced by a set of LNCs (ITPn) that has axon terminations in corpora cardiaca (CC) and allata (CA), as well as neurohemal areas (NhA). ITP regulates water intake and water reabsorption/excretion and possibly metabolism (Galikova et al. 2018). The ITPn are targets of DILP2 from the IPCs (Bader et al. 2013) and express the LK receptor (Zandawala et al. 2018b) but the functional aspects of this are not known

to negatively regulate IIS and thus delay development (Kannangara et al. 2019). The authors proposed that NPF acts systemically after release by EECs of the gut. Another peptidergic pathway that might be involved in eclosion motor behavior is a set of PDF-expressing neurons (PDFtri) in the tritocerebrum that contact CCAP- and EH-producing neurons (Selcho et al. 2018) (Supplementary Fig. 3). These PDFtri neurons, which seem to undergo apoptosis after eclosion, may thus regulate/modulate EH release and thereby activate Inka cells to release ETH and induce eclosion motor behavior (Selcho et al. 2018) but experimental evidence is yet to be provided. Finally, an additional level of growth coordination occurs through damage-induced DILP8 signaling from the imaginal discs, which via the intermediary *Lgr3*-expressing (DILP8 receptor) GCL brain neurons inhibits PTTH release and thus Ecd production and thereby delays growth and maturation (Fig. 11c) (Colombani

et al. 2015; Garelli et al. 2015; Vallejo et al. 2015). This pathway is to ensure symmetric growth of the organism.

In addition to regulating growth and maturation, PTTH neurons are also part of the larval light-avoidance circuit (Fig. 11d) (Keene et al. 2011; Yamanaka et al. 2013). When the larvae reach the late 3rd instar stage, they cease feeding, stop being photophobic and begin wandering. Rhodopsin 6 (Rh6)-expressing photoreceptors of the Bolwig organ, when activated by light, relay signals to the clock neurons (LNvs) (Keene et al. 2011). The LNvs, in turn, activate PTTH neurons, which mediate light avoidance through hormonal actions of PTTH on the light-sensitive Bolwig organ and peripheral sensory neurons (class IV dendritic arborization neurons; IV dan) (Keene et al. 2011; Yamanaka et al. 2013). This behavioral switch is also mediated by PTTH-stimulated Ecd production by the prothoracic glands, thereby together with the altered light response enables the larvae to pupariate in the dark.

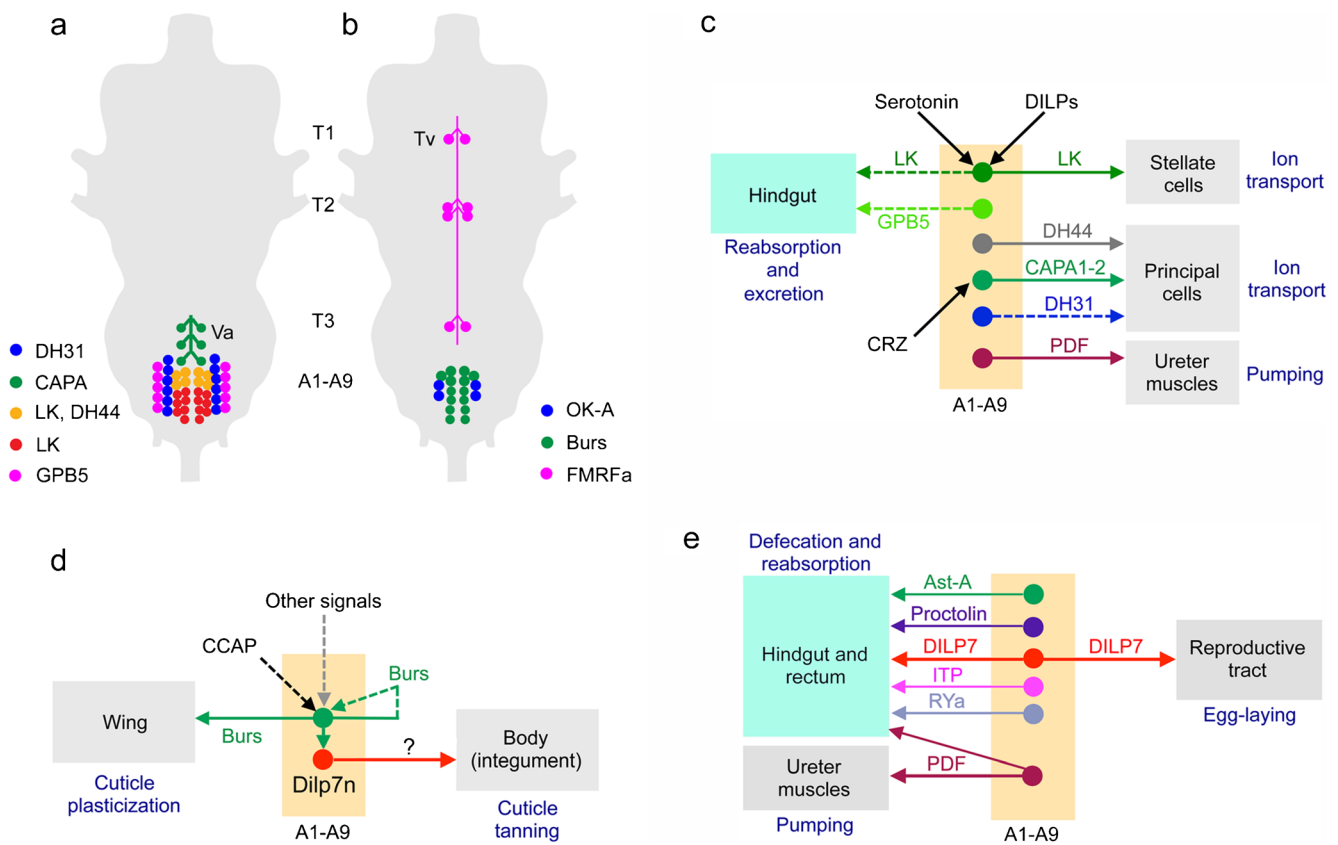


Fig. 9 Schemes depicting neurosecretory and efferent neuronal systems in the adult ventral nerve cord. **a, b** Cell bodies of neurosecretory cells in the adult ventral nerve cord (VNC) are mainly found in abdominal neuromeres and only a set of FMRFamide-expressing cells are known in the thoracic neuromeres. The peptide acronyms are explained in Table 1. **a** Peptide hormones regulating water and ion balance, as well as stress responses. The Va neurons have axon terminations in a neurohemal area in the dorsal neural sheath of the VNC, the others terminate on muscles in the body wall. **b** Peptides with unclear functions in the adult. The Tv cells have axon terminations in a plexus forming a neurohemal area in the dorsal neural sheath of the VNC, the others terminate on muscles in the body wall. **c** Peptide hormones in abdominal neuromeres that regulate water and ion balance. Dashed lines indicate that

actions from abdominal cells have not been shown experimentally. Some of the cells are regulated by specific substances (serotonin, DILPs and CRZ); the LK producing ABLK neurons express receptors for DILPs and serotonin (Liu et al. 2015) and the Va neurons (CAPA1 and CAPA2) express CRZ receptors (Zandawala et al. 2019). **d** Cells expressing bursicon (Burs) activate cuticle plasticization and cuticle tanning (indirectly via DILP7-expressing neurons, DILP7n). Bursicon regulates its own release (Peabody et al. 2008). **e** Efferent peptidergic neurons innervate the hindgut and/or reproductive tract. Of the neurons shown, only those expressing DILP7 and PDF (thick arrows) have been analyzed functionally (Cognigni et al. 2011; Talsma et al. 2012; Yang et al. 2008). Thus, the functions of the remaining neurons are unknown (but see text)

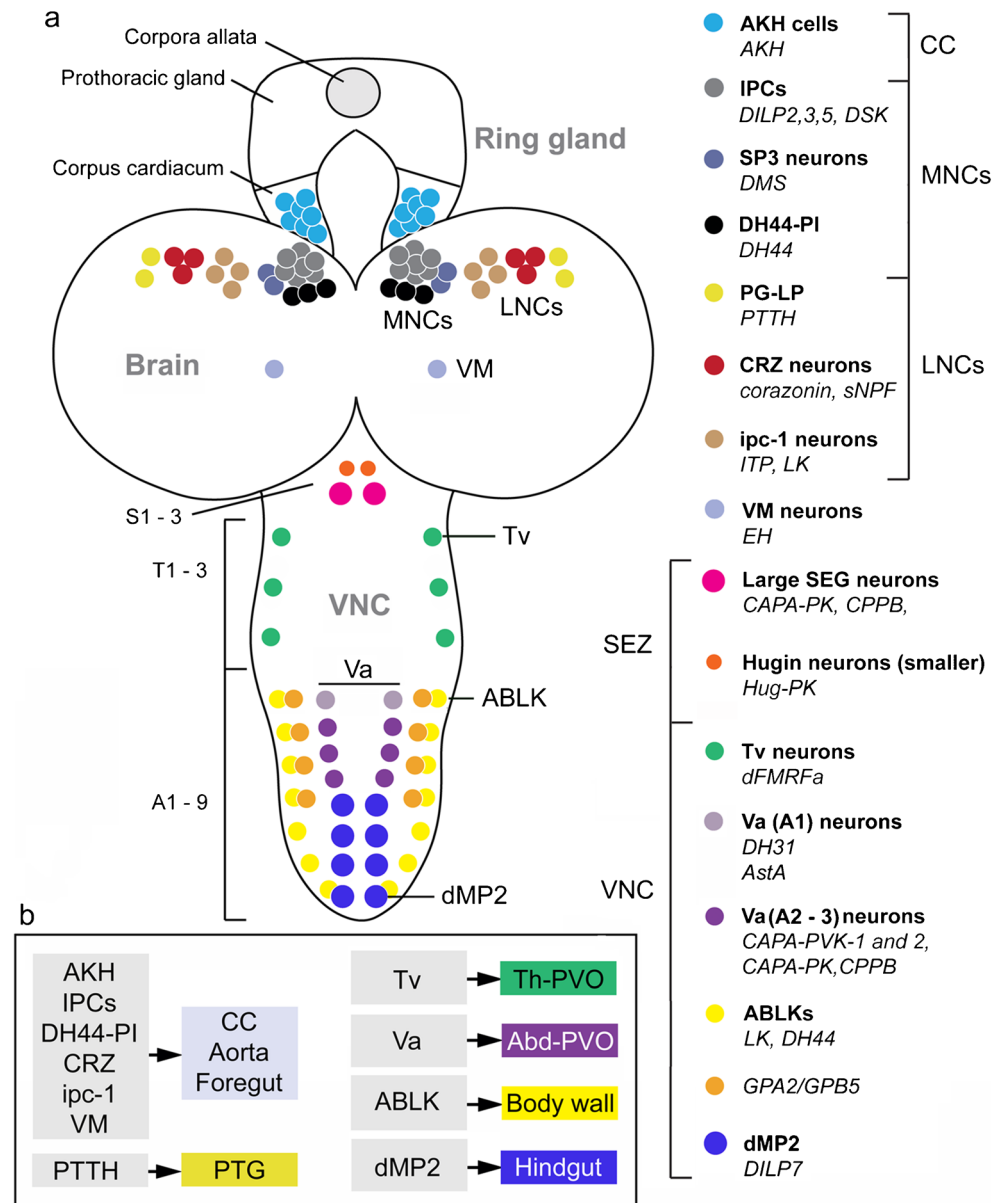
It is not yet clear if CRZ-producing DLPs that lie upstream of PTH neurons have any role in the light-avoidance behavior (Imura and Shimada-Niwa 2020). Another light-mediated pathway is mediated by the PTH neurons that signal to brain neurons producing eclosion hormone (EH) whose axons descend to the VNC where they contact motor neurons (Gong et al. 2019). This pathway mediates a light-avoidance response during locomotion in the larva.

In summary, most studied functions of peptide hormones in larvae are related to development and growth but certainly some are likely to regulate locomotor behavior, feeding and metabolism, as well as diuresis and excretion (see Gong et al. 2019; Hückesfeld et al. 2016; Melcher and Pankratz 2005; Okusawa et al. 2014; Schoofs et al. 2014; Vanderveken and O'Donnell 2014; Yamanaka et al. 2013).

Neurosecretory cells in other insects and crustaceans

There are not many comprehensive studies of peptide complement in specific brain neurosecretory cells of insects other than *Drosophila*. However, in *Manduca sexta*, *Aedes aegypti*, *Locusta migratoria* and especially *Rhodnius prolixus*, peptide immunocytochemistry has identified a number of such cells (Table 3, and references therein). In addition, mass spectrometry of dissected CC-CA complexes has confirmed many of these and identified additional peptides, also in the moth *Bombyx mori* (Supplementary material Table 1). It should be noted that most peptide data for *M. sexta* are old and derived from use of partly heterologous antisera (Zitnan et al. 1993) and that an update would be welcome. Somewhat surprisingly, only a few peptides were found in LNCs and MNCs of the studied

Fig. 10 Neurosecretory cells in CNS of larval *Drosophila*. (a) Schematic depiction of cell bodies of neurosecretory cells in different regions of the CNS: corpora cardiaca (CC), median neurosecretory cells (MNC), lateral neurosecretory cells (LNC), subesophageal zone (SEZ), neuromeres S1–3 and ventral nerve cord (VNC; neuromeres T1–3 and A1–9). To the right, we display a legend of the different cell types (color coded) and their peptides (in bold the cell names, in italics the peptides). Note that the *ipc-1* neurons are the same as the ITPn in the adult brain. The acronyms of the peptides are given in Table 1. (b) The primary release sites of different peptidergic hormone systems. Left column shows brain-derived hormones and right column hormones from cells in the VNC. Abbreviations: CC, corpora cardiaca; PTG, prothoracic gland; Th-PVO, thoracic perivisceral organs; Abd-PVO, abdominal perivisceral organs. This figure is updated and partly redrawn from a figure in Nässel and Zandawala et al. (2019), which in turn was based on Wegener et al. (2006)



insects (Table 3). In all insects studied to date, LNCs produce CRZ and PTTH (PTTH missing in adults in some insects) and MNCs express ILPs, myosuppressin and CRF-like DH (DH44 in *Drosophila*). Other peptides vary extensively between species. This common expression of several peptide hormones suggests that some ancient hormone functions have been evolutionarily conserved related to the control of feeding, metabolism, growth, reproduction and water homeostasis.

In the VNC, there are also some conserved peptidergic neurosecretory cell systems. For instance, pairs of LK (Cantera et al. 1992; Chen et al. 1994; Nässel et al. 1992; Te Brugge et al. 2001)- and CAPA (Kean et al. 2002; Loi and Tublitz 2004; Paluzzi et al. 2008; Predel and Wegener 2006)-producing neurosecretory cells have been shown laterally in

abdominal neuromeres in a number of species from different insect orders. Furthermore, sets of pyrokinin/PBAN (pheromone biosynthesis activating neuropeptide) expressing cells have been identified in the SEZ of several insect species (Choi et al. 2001; Davis et al. 1996; Hellmich et al. 2014; Meng et al. 2002; Sato et al. 1994).

In *Drosophila melanogaster*, the peptidome is somewhat reduced compared to species in basal insect orders but also compared to some other *Drosophila* species (Liessem et al. 2018; Nässel and Zandawala 2019; Veenstra 2010; Veenstra and Khammassi 2017). For instance, vasopressin-like peptide (inotocin), AKH/corazonin-related peptide (ACP), allatotropin, calcitonin, elevenin, neuroparsin, parathyroid hormone-like peptide and TRH genes have been lost (Nässel and Zandawala

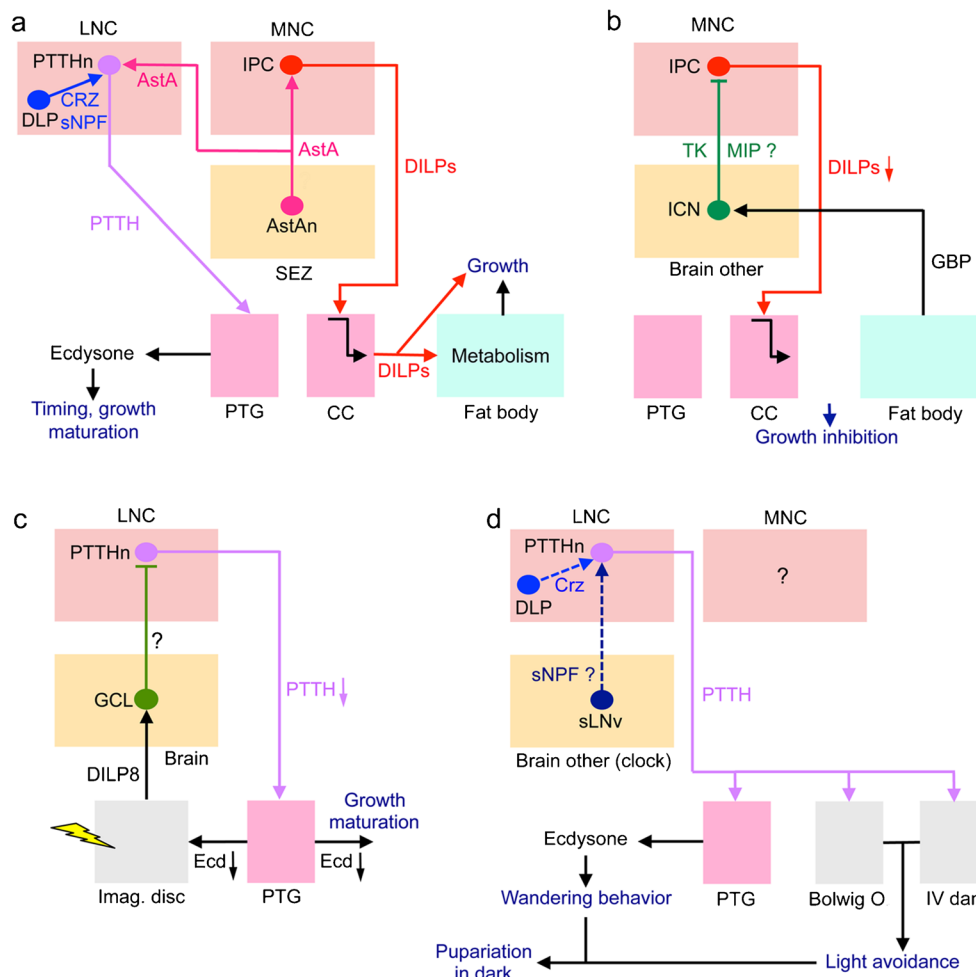


Fig. 11 Schemes depicting neurosecretory systems in the larva. **a** Role of prothoracicotrophic hormone neurons (PTTHn) and IPCs in timing of growth and maturation of third instar (L3) larvae. Neurons producing allatostatin A (AstAn) stimulate both PTTHn and IPCs via the receptor AstAR1 (DAR1) and this leads to ecdysone (Ecd) production and DILP release, which affects timing of development and maturation. In the mid L3, Ecd blocks growth and in late L3 the Ecd peak stimulates onset of sexual maturation (Deveci et al. 2019). Another study showed that corazonin (CRZ) activates PTTHn and thus basal Ecd production and increased larval growth (Imura and Shimada-Niwa 2020) and finally it was shown that both CRZ and sNPF from DLPs are required for regulation of IPCs (and growth) under nutrient restriction (Megha et al. 2019). It is not clear whether the two peptides (CRZ and AstA) cooperate in growth regulation since they were not investigated in the same study. **b** The IPCs are regulated by a pair of neurons (ICN) that produce tachykinin (TK) and myoinhibitory peptide (MIP) (Meschi et al. 2019). It was shown that TK inhibits IPCs and thus growth is inhibited. The ICNs are activated by growth-blocking peptide (GBP) from the fat body in a nutrient-dependent fashion. The role of MIP was not investigated. **c** Insulin-like peptide 8 (DILP8) is released upon damage to imaginal discs and acts on a set of four neurons (GCL) that express the DILP8 receptor Lgr3 (Colombani et al. 2015; Garelli et al. 2015; Vallejo et al. 2015). These GCL neurons inhibit production of PTTH by PTTHn and thus decrease

growth and maturation of the larva. The transmitter of GCLs is unknown. **d** The late L3 larvae undergo a transition from feeding to wandering stages. At this point, they also become negatively phototactic. PTTH from the PTTHn acts on the prothoracic glands (PTG), the light-sensitive Bolwig organ and peripheral sensory neurons (class IV dendritic arborization neurons; IV dan) to alter light responses and via Ecd induce wandering behavior and finally pupariation in the dark (Yamanaka et al. 2013). The inputs to the sLNvs are from rhodopsin 6-expressing photoreceptors (not shown). In other studies, it was shown that the PTTHn are regulated with sNPF by the clock neurons sLNv (Selcho et al. 2017) and by CRZ-producing DLP neurons (Imura and Shimada-Niwa 2020). However, the direct link to the light avoidance/wandering behavior and pupariation is unclear (thus dashed lines). Another light-mediated pathway (not shown here but see a similar circuit in Supplementary Fig. 3) is provided by the PTTH neurons that signal to brain neurons producing eclosion hormone (EH) whose axons descend to the VNC where they contact motor neurons (Gong et al. 2019). A recent study also suggested that the NPF receptor is expressed in the PTG and that NPF signaling negatively regulates insulin signaling in the PTG influences and thereby affects growth and developmental timing (Kannangara et al. 2019). NPF was proposed to be acting systemically after release by EECs of the gut (not shown in Fig. 11)

2019; Veenstra and Šimo 2020; Xie et al. 2020). This may suggest that in *Drosophila*, other peptides have taken over the roles of the missing ones (see examples of JH regulation below).

Systematic comparative studies of neuropeptide and peptide hormone functions in insects with larger and reduced peptidomes are required to resolve this.

Table 3 Peptides in neurosecretory cells of other insects

Species ¹	LNC peptide	MNC peptide	Stage	Reference
<i>M. sexta</i>	ILP ²	ILP ³	Larva	(Mizoguchi et al. 1987; Zitnan et al. 1995)
	AstC, EH	Proctolin	Larva	(Zitnan et al. 1995)
	AstC, proctolin	DH (CRF) ^{4e}	Larva	(Zitnan et al. 1995)
	FMRFa ⁵ , PTTH	FMRFa ⁶ , RYa ⁷	Larva	(Roller et al. 2016; Zitnan et al. 1995)
	ITP		Larva/adult	(Drexler et al. 2007)
	FMRFa ⁶	FMRFa ⁶ , PDF	Adult	(Homberg et al. 1991)
	FMRFa ⁶ , proctolin	DH, PDF	Adult	(Homberg et al. 1991)
<i>Ae. aegypti</i> ⁸	CCAP	ILPs	Adult	(Strand et al. 2016)
	Corazonin	MS	Adult	(Strand et al. 2016)
		NPF	Adult	(Strand et al. 2016)
		OEH ⁹	Adult	(Strand et al. 2016)
<i>R. prolixus</i>	AstA		Larva (5th)	(Sarkar et al. 2003; Zandawala et al. 2012)
	CAPA		Larva (5th)	(Paluzzi and Orchard 2010; Paluzzi et al. 2008)
	Corazonin		Larva/adult	(Patel et al. 2014)
	DH31	DH31	Larva (5th)	(Te Brugge et al. 2005; Zandawala et al. 2011)
	Orcokinin A		Larva (5th)	(Wulff et al. 2017)
	PTTH		Larva/adult	(Vafopoulou et al. 2007)
		ILPs	Larva (5th)	(Defferrari et al. 2016)
		Allatotropin	Larva (5th)	(Masood and Orchard 2014)
		DH (CRF)	Larva (5th)	(Te Brugge et al. 2001)
		FMRFa ⁶	Larva (5th)	(Tsang and Orchard 1991)
		LK	Larva (5th)	(Te Brugge et al. 2001)
		MIP	Adult	(Lange et al. 2012)
		NPF	Larva (5th)	(Gonzalez and Orchard 2008; Sedra and Lange 2016)
		SIFa ¹⁰	Larva/adult	(Ayub et al. 2020)
<i>L. migratoria</i>		ILP	Adult	(Goltzené et al. 1992; Lagueux et al. 1990)
		Neuroparsins	Adult	(Goltzené et al. 1992; Tamarelle and Girardie 1989)
		DH (CRF)	Adult	(Patel et al. 1994)
		ACP ¹¹	Adult	(Clynen and Schoofs 2009)
		AstA ¹¹	Adult	(Clynen and Schoofs 2009)
		MS ¹¹	Adult	(Clynen and Schoofs 2009)
		sNPF ¹¹	Adult	(Clynen and Schoofs 2009)
<i>Consensus</i> ¹²	CRZ	ILPs		
	PTTH	MS		
		DH (CRF)		

Peptide acronyms as in Table 1

¹ The species are *Manduca sexta*, *Aedes aegypti*, *Rhodnius prolixus* and *Locusta migratoria*

² ILP, insulin-like peptide (bombyxin); the cells colocalize proctolin and FMRFa

³ The cells colocalize proctolin

⁴ DH (CRF), corticotropin-releasing factor like diuretic hormone

⁵ Antiserum to FMRFamide, probably myosuppressin in these cells (Yamada et al. 2017)

⁶ FMRFa could mean products from any of 5–6 peptide precursor genes

⁷ RYamide possibly colocalized in one pair (Roller et al. 2016)

⁸ The cited review does not specify species in their figure, so could also include *Anopheles gambiae*. Note that the peptides listed were also found in the corpora cardiaca, suggesting they are all hormones (or some are release regulators)

⁹ OEH, ovary ecdysteroidogenic hormone

¹⁰ Appears to be regular SIFa interneurons (in PI) that supply axon terminations to retrocerebral complex

¹¹ These peptides were determined in dissected pars intercerebralis by mass spectrometry

¹² Only a few peptides were found in common in LNCs and MNCs in these species and *Drosophila*

One example of interesting differences between insects of different taxonomic groups is the regulation of JH production. Although JH displays vital functions during development and

in adult reproduction and physiology in insects (Riddiford 2008; Truman et al. 2006; Truman and Riddiford 2019), its production is regulated by different unrelated neuropeptides

encoded by distinct genes. Hence, in cockroaches, crickets and termites, AstA is a primary inhibitor of JH production (Bendena et al. 2020; Woodhead et al. 1989); in the cricket *Gryllus bimaculatus*, AstB (MIP) is a regulator (Lorenz et al. 1995); and in moths, mosquitos and flies, e.g., *Drosophila*, AstC is a JH inhibitor (Bendena et al. 2020; Kramer et al. 1991; Wang et al. 2012b). Thus, although all three peptide types are present in *Drosophila*, only AstC seems to affect JH production and it was suggested that the peptide is derived from MNCs innervating the CA (Kreienkamp et al. 2002; Zitnan et al. 1993) but clear data were missing. The stimulators of JH production also vary. In several species, including moths where it was first discovered (Kataoka et al. 1989a), an allatotropin (AT) has been identified but it is missing in *Drosophila* (see Bendena et al. 2020). In the moth *Bombyx*, AT acts indirectly via sNPF neurons in CA (Yamanaka et al. 2008). In some mosquitos, AT may act directly on JH production (Li et al. 2003) but in *Aedes aegypti* not only AT but also another peptide, ecdysis-triggering hormone (ETH), from epitracheal (Inka) cells increases JH biosynthesis (Areiza et al. 2014). In *Drosophila* where AT is missing, ETH from Inka cells was also found to stimulate JH production and thereby diminish ovary maturation (Meiselman et al. 2017). Additionally, there are reports suggesting that DILPs, via the dInR, regulate JH production in CA of adult *Drosophila* (Belgacem and Martin 2007; Rauschenbach et al. 2014; Tatar et al. 2001; Tu et al. 2005). In conclusion, it appears that hormonal regulation is to some extent plastic and that specific functions can be performed in different organisms by utilizing different messengers. The peptides discussed above are furthermore functionally highly pleiotropic and probably several of their functions are taxon specific (see Bendena et al. 2020; Nässel and Zandawala 2019).

It could be noted here that in another large group of arthropods, the crustaceans, the studies of neurosecretory cell systems have focused on the X-organ-sinus gland (XO-SG) in the eyestalks but also to some extent the anterior cardiac plexus (and anterior commissural organ) of the stomatogastric nervous system and the pericardial organs (POs) associated with the thoracic ganglia (see Christie 2011). Whereas the XO-SG could be reminiscent of the LNC-CC in insects, no analogs of the MNCs have been proposed. Quite a few peptides have been identified in the SG of decapod crustaceans, including sNPF, TK and the ITP-like crustacean hyperglycemic hormone (CHH) (Christie 2011), which are also found in *Drosophila* LNCs. Other SG peptides are myosuppressin, orcokinin, orcomyotropin, proctolin, the AKH-like red pigment concentrating hormone and SIFamide (Christie 2011). Hence, the XO-SG shares peptides also with PI/MNCs and CC of insects. For a comprehensive list of peptides in decapod crustaceans, see Veenstra (2016).

Do insect neurosecretory cell systems share functions with those in mammals?

As mentioned, it has been suggested for quite some time that the insect brain neuroendocrine system bears similarities to those in the vertebrate hypothalamus-pituitary-adrenal (HPA), hypothalamus-pituitary-thyroid (HPT) and hypothalamus-pituitary-gonadal (HPG) axes (Hartenstein 2006; Scharrer 1987; Scharrer and Scharrer 1963). It has also been shown that many of the peptides and peptide receptors of insects and mammals are ancestrally related (Jekely 2013; Mirabeau and Joly 2013). Yet anatomical and functional analogies between the hormonal systems of these taxa are not that straight forward. As seen in Figs. 2, 12 and 13, there are some basic similarities but also numerous differences. Only a few of the mammalian HPA peptides/peptide hormones are shared with those found in insects: vasopressin-inotocin, somatostatin-allatostatin C, GnRH-AKH/CRZ, TRH (thyroid-stimulating hormone-releasing hormone, or thyrotropin-releasing hormone)-EFLamide (TRH-like peptide) and CRF-DH44. Thus, many hypothalamus-pituitary (HP) peptides seem not to exist in insects and furthermore *Drosophila* has neither inotocin nor TRH-like peptide (see Liutkeviciute et al. 2016; Nässel and Zandawala 2019; Odekunle and Elphick 2020; Veenstra and Šimo 2020). It is also interesting to note that inotocin, the insect ortholog of the antidiuretic hormone vasopressin, is produced by interneurons in insects and seems not to function as a circulating hormone, although it can to act indirectly to trigger release of a diuretic factor that stimulates secretion in Malpighian tubules (Aikins et al. 2008; Stafflinger et al. 2008). Also TRH functions seem to have diverged over evolution since the distribution of EFLamide in locusts suggests an interneuronal function in regulation of the central complex circuits and that a hormone-releasing function as seen in vertebrates is not likely in insects (Veenstra and Šimo 2020). Hence, only CRF-DH44, GnRH-AKH and possibly somatostatin-allatostatin C remain as peptides shared by the HP and LNC/MNC systems.

Another difference is that in mammals the majority of the pituitary hormones (at least six) are produced by glandular cells in the anterior pituitary and released into circulation via the vasculatory system (Figs. 12, 13), whereas in insects, only two peptide hormones are produced by CC glandular cells in AKH and Lst (Fig. 13). In contrast, quite a few LNC- and MNC-derived peptide hormones are released (from neurosecretory cells) directly into circulation via neurohemal areas, whereas in mammals only vasopressin and oxytocin are released from hypothalamic neurosecretory cells (Figs. 12, 13). Furthermore, in mammals, a number of peripheral glands and tissues throughout the body that are targeted by pituitary hormones produce several “secondary” hormones (Fig. 12). In insects, only a few target tissues/glands (e.g., CA, prothoracic glands and

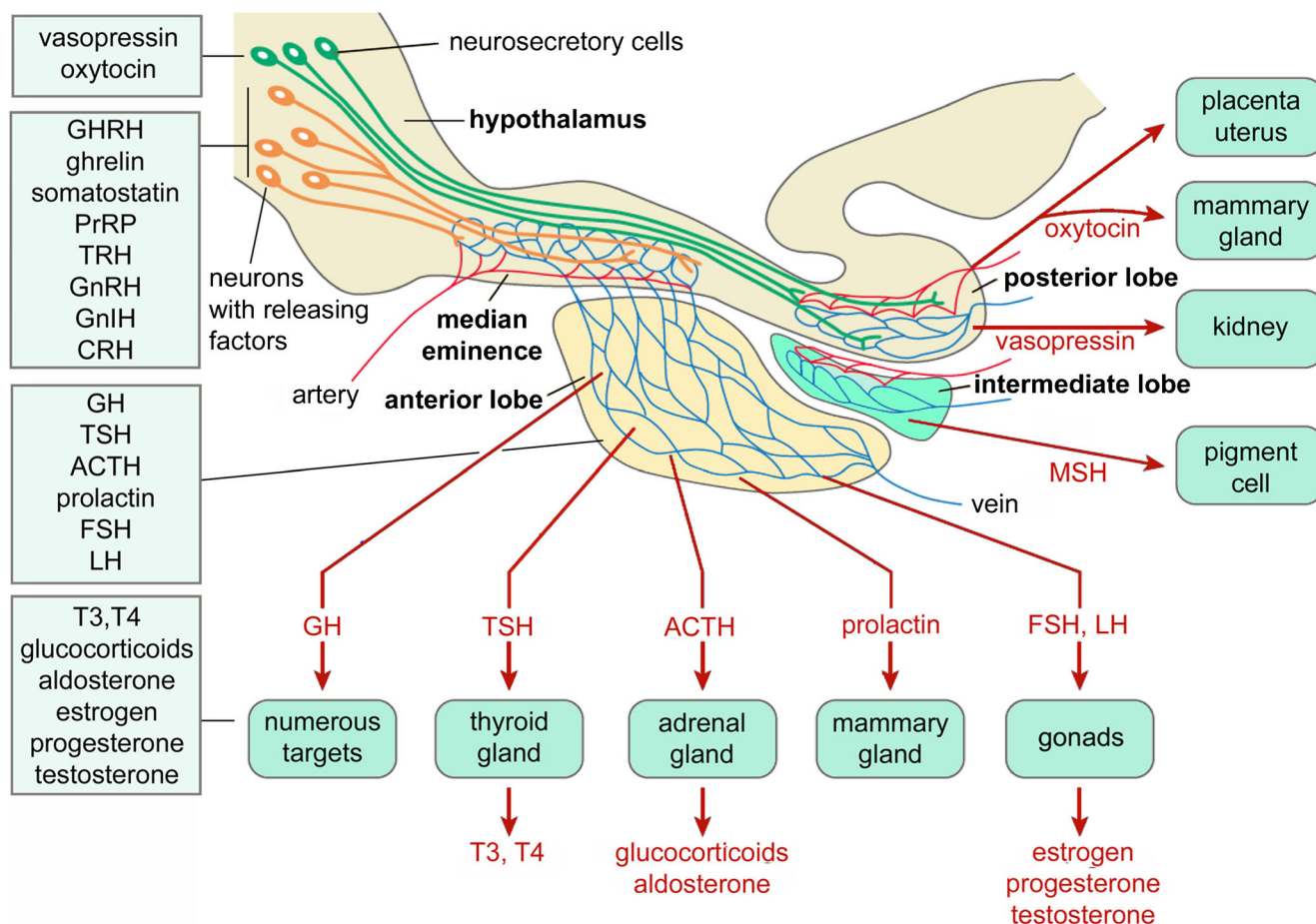


Fig. 12 Signaling in hypothalamus and pituitary in mammals. This scheme presents the most common factors seen in the hypothalamus-pituitary axes of mammals. The intermediate pituitary lobe (with its separate capillary network) and MSH signaling are not found in humans and many other mammals. Peptides are released from hypothalamic neuroendocrine cells into separate capillary networks. Sets of neuroendocrine cells release neuropeptides to the anterior lobe of the pituitary via capillaries in the median eminence. These peptides regulate the release of pituitary peptide hormones produced by endocrine cells of the anterior lobe (these cells are not shown). Additionally, dopamine and GABA exert influence on the endocrine cells (not shown). The posterior capillary network receives peptide hormones (oxytocin and vasopressin) from large hypothalamic neurons whose axons project to the posterior lobe of the pituitary. These peptides are released into the general circulation

gonads) are known to produce hormones such as Ecd and JH. However, the insect fat body, a liver and adipocyte analog, is targeted by several brain-derived hormones and produces a number of factors acting on the CNS neurosecretory system, similar to mammalian adipocytes (Fig. 13).

The general functions of a few insect LNC-MNC peptides partly overlap with those of some HP peptides: (1) DILPs produced by MNCs regulate growth (in larvae/pupae); (2) ion/water homeostasis is regulated by ITP and DH44; (3) metabolism by CRZ, ITP, DILPs and DH44 (and AKH from CC); and (4) gonad maturation and reproduction by DILPs (aspects of reproduction by DH44 and CRZ). In mammals, these functions are served by (1) growth hormone, (2) vasopressin, (3) TSH (and T3,

T4) and (4) FSH and LH (see Figs. 12, 13). Possibly, CRZ and DILPs (from DLPs and IPCs) are part of an axis regulating stress responses like the HPA axis in mammals (see Figs. 12, 13). Since there are no adrenal glands in insects, the corresponding secondary hormones are not known in insects. Perhaps octopamine (OA) and dopamine (DA), as well as Ecd and JH, are part of the stress signaling downstream of DILPs and CRZ (Gruntenko et al. 2016; Gruntenko et al. 2005; Gruntenko et al. 2010; Lubawy et al. 2020; Petrucelli et al. 2020; Roeder 2020; Zhao et al. 2010). Thus, the cellular sources of insect stress factors are in adults spread out into CA (JH), sets of neurons (OA, DA) and gonads (Ecd). Other peptide hormones, including modulators of water/ion homeostasis and metabolism, have been implicated in

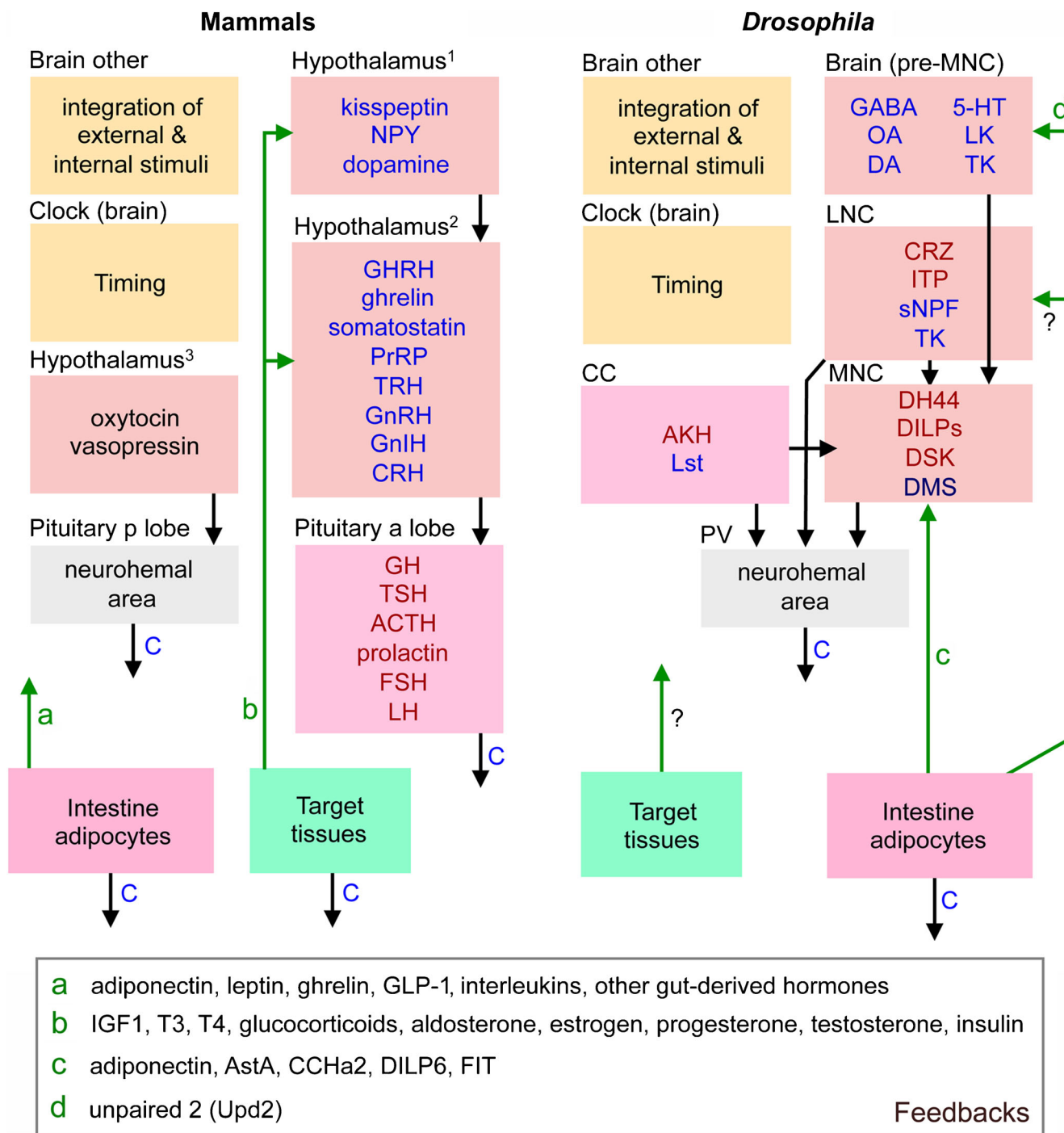


Fig. 13 Comparison between mammalian neurosecretory systems and those of *Drosophila*. This highly schematic figure shows the key features of the brain-hypothalamus-pituitary axis in comparison with presumably analog regions in *Drosophila*. Same colors indicate presumed similar regions. Hypothalamus is divided into three regions (1–3) and the pituitary into anterior (a) and posterior (p) lobes. Substances indicated in blue are neuromodulators and/or release-regulating factors, those in dark red are hormones and the function of dromyosuppressin (DMS) in MNCs is not clear although the DMS-MNC cells have axons terminating together with those of the other MNCs. Arrows indicate action of the substances on cells in a region, blue C:s indicate release into general circulation and green arrows are feedback from target tissues. The regions “brain other” and “clock” are not interconnected to other regions with arrows to avoid

complexity but certainly play important roles in regulating neurosecretory systems (and receive feedback from hormonal systems). We lumped together intestine and adipocytes as one set of target tissues and other targets are grouped in target tissues (these are, e.g., gonads, thyroid, adrenals and liver in mammals and gonads and muscles in *Drosophila*). Adipocytes in *Drosophila* include other fat body functions (e.g., liver-like and immune functions). Substances used as feedback are indicated by green (a–d) and are listed in the box below (GLP-1, glucagon-like peptide 1; IGF1, insulin-like growth factor 1; T3, triiodothyronine; T4, thyroxine; FIT, female-specific independent of transformer). Acronyms of other factors and hormones are as in Table 1. Other abbreviations: CC, corpora cardiaca; MNC, median neurosecretory cells; LNC, lateral neurosecretory cells; PV, pre-ventriculus region (including aorta, crop duct, and CC)

responses to insect cold stress where hemolymph osmolarity is a critical factor for survival (Lubawy et al. 2020; Overgaard and MacMillan 2017; Terhzaz et al. 2015). The water/ion homeostasis is compromised during exposure to low temperature and the recovery (chill coma recovery) involves a resetting of osmotic and ionic balance. Thus, peptides such as CAPA (MacMillan et al. 2018; Terhzaz et al. 2015), ILPs (Broughton et al. 2005; Lingo et al. 2007; Nässel and Vanden Broeck 2016) and maybe DH31, DH44, ITP and LK (Cannell et al. 2016; Li et al. 2020; Lubawy et al. 2020) are likely to be of importance in regulation of cold-induced stress. Recently, a link between CRZ and CAPA in regulation of chill coma recovery was discovered, suggesting that DLPs and CAPA producing Va neurons in the VNC constitute another stress-signaling axis (Zandawala et al. 2020).

Thus, in summary, the anatomical and functional organization of postembryonic brain neurosecretory systems seems to have diversified over evolution. Yet there seems to be also some convergent evolution of hormone function. For example, mammalian glucagon released from the pancreas and the evolutionary unrelated AKH of CC seem to be functional analogs in carbohydrate mobilization (Kim and Rulifson 2004; Lee and Park 2004). On the other hand, mammalian insulin and insect ILPs are ancestrally related and share many functions but the cell systems releasing them are very different.

Another interesting difference between insects and mammals is the large number of neurosecretory cells (and peptide hormones) associated with the abdominal ganglia in insects (Fig. 10) and the lack of such systems associated with the spinal cord. In fish, however, there is a caudal neurosecretory system in the posterior spinal cord with so-called Dahlgren cells supplying axon terminations to an associated neurohemal area, the urophysis (see Fridberg and Bern 1968; Nässel and Larhammar 2013). The neurosecretory Dahlgren cells produce the antidiuretic peptides isotocin and arginine vasopressin, as well as other osmoregulatory hormones such as urotensin I, urotensin II, corticotropin-releasing factor (CRF) and parathyroid hormone-related protein (Gozdowska et al. 2013; Ingleton et al. 2002; Lederis et al. 1982; Pearson et al. 1980). Thus, the fish urophysis appears to share functions with the insect caudal neurosecretory cells that produce LK, DH44, DH31, ITP and GPA2/GPB5, known to regulate water and ion homeostasis.

Conclusions and future perspectives

We have outlined neurosecretory and peptidergic systems in *Drosophila* and provided some comparisons with other insects as well as vertebrates. The regulation of *Drosophila* development, behavior and physiology relies on both (1) peptide hormones from LNCs, MNCs and other neurosecretory cells; (2) regulatory peptidergic interneurons that are part of high level neuronal circuits; and (3) peptidergic (and other) interneurons

that regulate release of peptide hormones (sometimes in addition to being part of circuits). Hormonal axes in *Drosophila* are morphologically less distinctly organized (cells are more distributed) than those of the different hypothalamus-pituitary axes of vertebrates. Nevertheless, we can outline hormonal axes in *Drosophila* that regulate metabolism, appetite and food intake, reproductive behavior and physiology, sleep and activity rhythms and water and ion balance (excretion), as well as different developmental processes.

The *Drosophila* peptidome is somewhat reduced compared to several other insect species, suggesting that some peptide hormone functions are missing or taken over by other peptides. It would therefore be of great interest to widen the studies of insect peptide hormone functions and to explore other non-model insects with larger peptidomes. There are several *Drosophila* peptides whose adult functions are poorly known (for instance AstC, orckinin, CCAP, CCHa2, proctolin and FMRFamide) and for some it even remains to be determined whether they have hormonal roles or not (for instance AstC, orckinin, DH31 and CCHa2). With the multitude of novel imaging techniques available (see Bates et al. 2020), it would furthermore be important to explore the peptidergic and neurosecretory systems to determine interactions between different regulatory systems. In this context, it is for instance rarely known how sensory inputs influence neurosecretory systems, except for systems driven by nutrient sensing. Thus, although there are detailed studies of neurosecretory systems regulating water and ion homeostasis, we barely know how sensory information is relayed to the relevant neurosecretory cells. Also, feedback from target tissues to neurosecretory cells in the CNS are little explored, except for signals from the fat body (Owusu-Ansah and Perrimon 2015). Thus, insect endocrinology, although it has a long history, seems in many ways to be in its infancy.

Acknowledgments We thank Prof. Sakiko Shiga (Osaka, Japan) for the permission to redraw her figures shown in Fig. 2(a, b).

Funding information Open access funding provided by Stockholm University. The research was financed by the Swedish Research Council (Vetenskapsrådet), grant number 2015-04626 (to DRN).

Compliance with ethical standards

Conflict of interest The authors declare that there is no conflict of interest.

Ethical approval This article is a literature review and does not contain any animal experiments or studies with human participants performed by any of the authors.

Open Access This article is licensed under a Creative Commons Attribution 4.0 International License, which permits use, sharing, adaptation, distribution and reproduction in any medium or format, as long as you give appropriate credit to the original author(s) and the source, provide a link to the Creative Commons licence, and indicate if changes were made. The images or other third party material in this article

are included in the article's Creative Commons licence, unless indicated otherwise in a credit line to the material. If material is not included in the article's Creative Commons licence and your intended use is not permitted by statutory regulation or exceeds the permitted use, you will need to obtain permission directly from the copyright holder. To view a copy of this licence, visit <http://creativecommons.org/licenses/by/4.0/>.

References

- Abruzzi KC, Zadina A, Luo W, Wiyanto E, Rahman R, Guo F, Shafer O, Rosbash M (2017) RNA-seq analysis of *Drosophila* clock and non-clock neurons reveals neuron-specific cycling and novel candidate neuropeptides. *PLoS Genet* 13:e1006613
- Agrawal N, Delanoue R, Mauri A, Basco D, Pasco M, Thorens B, Leopold P (2016) The *Drosophila* TNF Eiger is an adipokine that acts on insulin-producing cells to mediate nutrient response. *Cell Metab* 23:675–684
- Ahmad M, He L, Perrimon N (2019) Regulation of insulin and adipokinetic hormone/glucagon production in flies. *WIREs Developmental Biology* n/a:e360
- Aikins MJ, Schooley DA, Begum K, Detheux M, Beeman RW, Park Y (2008) Vasopressin-like peptide and its receptor function in an indirect diuretic signaling pathway in the red flour beetle. *Insect Biochem Molec* 38:740–748
- Alfa RW, Park S, Skelly KR, Poffenberger G, Jain N, Gu X, Kockel L, Wang J, Liu Y, Powers AC, Kim SK (2015) Suppression of insulin production and secretion by a decretin hormone. *Cell Metab* 21:323–333
- Anderson MS, Halpern ME, Keshishian H (1988) Identification of the neuropeptide transmitter proctolin in *Drosophila* larvae: characterization of muscle fiber-specific neuromuscular endings. *J Neurosci* 8:242–255
- Areiza M, Nouzova M, Rivera-Perez C, Noriega FG (2014) Ecdysis triggering hormone ensures proper timing of juvenile hormone biosynthesis in pharate adult mosquitoes. *Insect Biochem Molec* 54:98–105
- Audsley N, Weaver RJ (2009) Neuropeptides associated with the regulation of feeding in insects. *Gen Comp Endocrinol* 162:93–104
- Ayub M, Hermiz M, Lange AB, Orchard I (2020) SIFamide influences feeding in the Chagas disease vector, *Rhodnius prolixus*. *Front Neurosci* 14:134
- Bader R, Sarraf-Zadeh L, Peters M, Moderau N, Stocker H, Kohler K, Pankratz MJ, Hafen E (2013) The IGFBP7 homolog Imp-L2 promotes insulin signaling in distinct neurons of the *Drosophila* brain. *J Cell Sci* 126:2571–2576
- Ballard SL, Jarolimova J, Wharton KA (2010) Gbb/BMP signaling is required to maintain energy homeostasis in *Drosophila*. *Dev Biol* 337:375–385
- Barber AF, Erion R, Holmes TC, Sehgal A (2016) Circadian and feeding cues integrate to drive rhythms of physiology in *Drosophila* insulin-producing cells. *Genes Dev* 30:2596–2606
- Bates AS, Manton JD, Jagannathan SR, Costa M, Schlegel P, Rohlfing T, Jefferis GSXE (2020) The natverse, a versatile toolbox for combining and analysing neuroanatomical data. *Elife* 9:e53350
- Belgacem YH, Martin JR (2007) Hmger in the corpus allatum controls sexual dimorphism of locomotor activity and body size via the insulin pathway in *Drosophila*. *PLoS One* 2:e187
- Bendena WG, Hui JHL, Chin-Sang I, Tobe SS (2020) Neuropeptide and microRNA regulators of juvenile hormone production. *Gen Comp Endocr* 295:113507
- Bharucha KN, Tarr P, Zipursky SL (2008) A glucagon-like endocrine pathway in *Drosophila* modulates both lipid and carbohydrate homeostasis. *J Exp Biol* 211:3103–3110
- Broggiolo W, Stocker H, Ikeya T, Rintelen F, Fernandez R, Hafen E (2001) An evolutionarily conserved function of the *Drosophila* insulin receptor and insulin-like peptides in growth control. *Curr Biol* 11:213–221
- Broughton SJ, Piper MD, Ikeya T, Bass TM, Jacobson J, Driege Y, Martinez P, Hafen E, Withers DJ, Leever SJ, Partridge L (2005) Longer lifespan, altered metabolism, and stress resistance in *Drosophila* from ablation of cells making insulin-like ligands. *Proc Natl Acad Sci U S A* 102:3105–3110
- Brown EB, Shah KD, Faville R, Kottler B, Keene AC (2020) *Drosophila* insulin-like peptide 2 mediates dietary regulation of sleep intensity. *PLoS Genet* 16:e1008270
- Buhler K, Clements J, Winant M, Bolckmans L, Vulsteke V, Callaerts P (2018) Growth control through regulation of insulin signalling by nutrition-activated steroid hormone in *Drosophila*. *Development* (Cambridge, England) 145:dev165654
- Cabrero P, Radford JC, Broderick KE, Costes L, Veenstra JA, Spana EP, Davies SA, Dow JA (2002) The Dh gene of *Drosophila melanogaster* encodes a diuretic peptide that acts through cyclic AMP. *J Exp Biol* 205:3799–3807
- Campbell JE, Drucker DJ (2013) Pharmacology, physiology, and mechanisms of incretin hormone action. *Cell Metab* 17:819–837
- Cannell E, Dornan AJ, Halberg KA, Terhzaz S, Dow JA, Davies SA (2016) The Corticotropin-releasing factor-like diuretic hormone 44 (DH) and kinin neuropeptides modulate desiccation and starvation tolerance in *Drosophila melanogaster*. *Peptides* 80:96–107
- Cantera R, Nässel DR (1992) Segmental peptidergic innervation of abdominal targets in larval and adult dipteran insects revealed with an antiserum against leucokinin I. *Cell Tissue Res* 269:459–471
- Cantera R, Hansson BS, Hallberg E, Nässel DR (1992) Postembryonic development of leucokinin I-immunoreactive neurons innervating a neurohemal organ in the turnip moth *Agrotis segetum*. *Cell Tissue Res* 269:65–77
- Cavey M, Collins B, Bertet C, Blau J (2016) Circadian rhythms in neuronal activity propagate through output circuits. *Nat Neurosci* 19:587–595
- Chen Y, Veenstra JA, Davis NT, Hagedorn HH (1994) A comparative study of leucokinin-immunoreactive neurons in insects. *Cell Tissue Res* 276:69–83
- Chen J, Choi MS, Mizoguchi A, Veenstra JA, Kang K, Kim YJ, Kwon JY (2015) Isoform-specific expression of the neuropeptide orokinin in *Drosophila melanogaster*. *Peptides* 68:50–57
- Chen J, Kim SM, Kwon JY (2016a) A systematic analysis of *Drosophila* regulatory peptide expression in enteroendocrine cells. *Mol Cells* 39:358–366
- Chen J, Reiher W, Hermann-Luibl C, Sellami A, Cognigni P, Kondo S, Helfrich-Forster C, Veenstra JA, Wegener C (2016b) Allatostatin a signalling in *Drosophila* regulates feeding and sleep and is modulated by PDF. *PLoS Genet* 12:e1006346
- Chintapalli VR, Terhzaz S, Wang J, Al Bratty M, Watson DG, Herzyk P, Davies SA, Dow JA (2012) Functional correlates of positional and gender-specific renal asymmetry in *Drosophila*. *PLoS One* 7:e32577
- Choi MY, Rafaeli A, Jurenka RA (2001) Pyrokinin/PBAN-like peptides in the central nervous system of *Drosophila melanogaster*. *Cell Tissue Res* 306:459–465
- Christie AE (2011) Crustacean neuroendocrine systems and their signaling agents. *Cell Tissue Res* 345:41–67
- Chung BY, Ro J, Hutter SA, Miller KM, Guduguntla LS, Kondo S, Pletcher SD (2017) *Drosophila* neuropeptide F signaling independently regulates feeding and sleep-wake behavior. *Cell Rep* 19:2441–2450
- Clements J, Hens K, Francis C, Schellens A, Callaerts P (2008) Conserved role for the *Drosophila* Pax6 homolog eyeless in differentiation and function of insulin-producing neurons. *Proc Natl Acad Sci U S A* 105:16183–16188
- Clements J, Dolafi T, Umayam L, Neubarth NL, Berg S, Scheffer LK, Plaza SM (2020) *neuPrint*: analysis tools for EM Connectomics. *bioRxiv*:2020.2001.2016.909465
- Clynen E, Schoofs L (2009) Peptidomic survey of the locust neuroendocrine system. *Insect Biochem Molec* 39:491–507

- Coast GM, Webster SG, Schegg KM, Tobe SS, Schooley DA (2001) The *Drosophila melanogaster* homologue of an insect calcitonin-like diuretic peptide stimulates V-ATPase activity in fruit fly Malpighian tubules. *J Exp Biol* 204:1795–1804
- Cognigni P, Bailey AP, Miguel-Aliaga I (2011) Enteric neurons and systemic signals couple nutritional and reproductive status with intestinal homeostasis. *Cell Metab* 13:92–104
- Colombani J, Andersen DS, Boulan L, Boone E, Romero N, Virolle V, Texada M, Leopold P (2015) *Drosophila* Lgr3 couples organ growth with maturation and ensures developmental stability. *Current Biology* 25:2723–2729
- Davie K, Janssens J, Koldere D, De Waegeneer M, Pech U, Kreft L, Aibar S, Makhzami S, Christiaens V, Bravo Gonzalez-Blas C, Poovathingal S, Hulselmans G, Spanier K, Moerman T, Vanspauwen B, Geurs S, Voet T, Lammertyn J, Thienpont B, Liu S, Konstantinides N, Fiers M, Verstreken P, Aerts S (2018) A single-cell transcriptome atlas of the aging *Drosophila* brain. *Cell* 174:982–998
- Davis NT, Homberg U, Teal PE, Altstein M, Agricola HJ, Hildebrand JG (1996) Neuroanatomy and immunocytochemistry of the median neuroendocrine cells of the subesophageal ganglion of the tobacco hawkmoth, *Manduca sexta*: immunoreactivities to PBAN and other neuropeptides. *Microsc Res Tech* 35:201–229
- de Haro M, Al-Ramahi I, Benito-Sipos J, Lopez-Arias B, Dorado B, Veenstra JA, Herrero P (2010) Detailed analysis of leucokinin-expressing neurons and their candidate functions in the *Drosophila* nervous system. *Cell Tissue Res* 339:321–336
- De Velasco B, Shen J, Go S, Hartenstein V (2004) Embryonic development of the *Drosophila* corpus cardiacum, a neuroendocrine gland with similarity to the vertebrate pituitary, is controlled by sine oculis and glass. *Dev Biol* 274:280–294
- de Velasco B, Erelik T, Shy D, Sclafani J, Lipshitz H, McInnes R, Hartenstein V (2007) Specification and development of the pars intercerebralis and pars lateralis, neuroendocrine command centers in the *Drosophila* brain. *Dev Biol* 302:309–323
- Defferrari MS, Orchard I, Lange AB (2016) Identification of the first insulin-like peptide in the disease vector *Rhodnius prolixus*: involvement in metabolic homeostasis of lipids and carbohydrates. *Insect Biochem Mol Biol* 70:148–159
- Delanoue R, Meschi E, Agrawal N, Mauri A, Tsatskis Y, McNeill H, Leopold P (2016) *Drosophila* insulin release is triggered by adipose stunted ligand to brain methuselah receptor. *Science* 353:1553–1556
- Delgado MJ, Cerdá-Reverter JM, Soengas JL (2017) Hypothalamic integration of metabolic, endocrine, and circadian signals in fish: involvement in the control of food intake. *Front Neurosci* 11:354
- Deveci D, Martin FA, Leopold P, Romero NM (2019) AstA signaling functions as an evolutionary conserved mechanism timing juvenile to adult transition. *Current Biology* 29:813–822.e814
- Diesner M, Predel R, Neupert S (2018) Neuropeptide mapping of dimmed cells of adult *Drosophila* brain. *J Am Soc Mass Spectrom* 29:890–902
- Dirksen H, Tesfai LK, Albus C, Nässel DR (2008) Ion transport peptide splice forms in central and peripheral neurons throughout postembryogenesis of *Drosophila melanogaster*. *J Comp Neurol* 509:23–41
- Drexler AL, Harris CC, dela Pena MG, Asuncion-Uchi M, Chung S, Webster S, Fuse M (2007) Molecular characterization and cell-specific expression of an ion transport peptide in the tobacco hornworm, *Manduca sexta*. *Cell Tissue Res* 329:391–408
- Dreyer AP, Martin MM, Fulgham CV, Jabr DA, Bai L, Beshel J, Cavanaugh DJ (2019) A circadian output center controlling feeding: fasting rhythms in *Drosophila*. *PLoS Genet* 15:e1008478
- Dunn TW, Mercier AJ (2005) Synaptic modulation by a *Drosophila* neuropeptide is motor neuron-specific and requires CaMKII activity. *Peptides* 26:269–276
- Dus M, Lai JSY, Gunapala KM, Min S, Tayler TD, Hergarden AC, Geraud E, Joseph CM, Suh GSB (2015) Nutrient sensor in the brain directs the action of the brain-gut axis in *Drosophila*. *Neuron* 87:139–151
- Duve H, Johnsen AH, Sewell JC, Scott AG, Orchard I, Rehfeld JF, Thorpe A (1992) Isolation, structure, and activity of -Phe-Met-Arg-Phe-NH₂ neuropeptides (designated calliFMRFamides) from the blowfly *Calliphora vomitoria*. *Proc Natl Acad Sci U S A* 89:2326–2330
- Elphick MR, Mirabeau O, Larhammar D (2018) Evolution of neuropeptide signalling systems. *The Journal of Experimental Biology* 221:jeb151092
- Flaven-Pouchon J, Alvarez JV, Rojas C, Ewer J (2020) The tanning hormone, bursicon, does not act directly on the epidermis to tan the *Drosophila* exoskeleton. *BMC Biol* 18:17
- Fridberg G, Bern HA (1968) The urophysis and the caudal neurosecretory system of fishes. *Biol Rev* 43:175–199
- Galikova M, Dirksen H, Nässel DR (2018) The thirsty fly: ion transport peptide (ITP) is a novel endocrine regulator of water homeostasis in *Drosophila*. *PLoS Genet* 14:e1007618
- Garelli A, Heredia F, Casimiro AP, Macedo A, Nunes C, Garcez M, Dias AR, Volonte YA, Uhlmann T, Caparros E, Koyama T, Gontijo AM (2015) Dilp8 requires the neuronal relaxin receptor Lgr3 to couple growth to developmental timing. *Nat Commun* 6:8732
- Geminard C, Rulifson EJ, Leopold P (2009) Remote control of insulin secretion by fat cells in *Drosophila*. *Cell Metab* 10:199–207
- Ghosh AC, O'Connor MB (2014) Systemic Activin signaling independently regulates sugar homeostasis, cellular metabolism, and pH balance in *Drosophila melanogaster*. *Proc Natl Acad Sci U S A* 111:5729–5734
- Goltzené F, Holder F, Charlet M, Meister M, Oka T (1992) Immunocytochemical localization of Bombyx-PTTH-like molecules in neurosecretory cells of the brain of the migratory locust, *Locusta migratoria*. A comparison with neuroparsin and insulin-related peptide. *Cell Tissue Res* 269:133–140
- Gong C, Ouyang Z, Zhao W, Wang J, Li K, Zhou P, Zhao T, Zheng N, Gong Z (2019) A neuronal pathway that commands deceleration in *Drosophila* larval light-avoidance. *Neurosci Bull* 35:959–968
- Gonzalez R, Orchard I (2008) Characterization of neuropeptide F-like immunoreactivity in the blood-feeding hemipteran, *Rhodnius prolixus*. *Peptides* 29:545–558
- Gozdowska M, Ślebioda M, Kulczykowska E (2013) Neuropeptides isotocin and arginine vasotocin in urophysis of three fish species. *Fish Physiol Biochem* 39:863–869
- Gribble FM, Reimann F (2019) Function and mechanisms of enteroendocrine cells and gut hormones in metabolism. *Nat Rev Endocrinol* 15:226–237
- Gruntenko NE, Karpova EK, Adonyeva NV, Chentsova NA, Faddeeva NV, Alekseev AA, Rauschenbach IY (2005) Juvenile hormone, 20-hydroxyecdysone and dopamine interaction in *Drosophila virilis* reproduction under normal and nutritional stress conditions. *J Insect Physiol* 51:417–425
- Gruntenko NE, Wen D, Karpova EK, Adonyeva NV, Liu Y, He Q, Faddeeva NV, Fomin AS, Li S, Rauschenbach IY (2010) Altered juvenile hormone metabolism, reproduction and stress response in *Drosophila* adults with genetic ablation of the corpus allatum cells. *Insect Biochem Mol Biol* 40:891–897
- Gruntenko NE, Adonyeva NV, Burdina EV, Karpova EK, Andreenkova OV, Gladkikh DV, Ilinsky YY, Rauschenbach IY (2016) The impact of FOXO on dopamine and octopamine metabolism in *Drosophila* under normal and heat stress conditions. *Biology Open* 5:1706
- Hartenstein V (2006) The neuroendocrine system of invertebrates: a developmental and evolutionary perspective. *J Endocrinol* 190:555–570
- Hauser F, Williamson M, Cazzamali G, Grimmelikhuijzen CJ (2006) Identifying neuropeptide and protein hormone receptors in *Drosophila melanogaster* by exploiting genomic data. *Brief Funct Genomic Proteomic* 4:321–330
- Hellmich E, Nusawardani T, Bartholomay L, Jurenka R (2014) Pyrokinin/PBAN-like peptides in the central nervous system of mosquitoes. *Cell Tissue Res* 356:39–47

- Hentze JL, Carlsson MA, Kondo S, Nässel DR, Rewitz KF (2015) The neuropeptide allatostatin A regulates metabolism and feeding decisions in *Drosophila*. *Sci Rep* 5:11680
- Hergarden AC, Tayler TD, Anderson DJ (2012) Allatostatin-A neurons inhibit feeding behavior in adult *Drosophila*. *Proc Natl Acad Sci U S A* 109:3967–3972
- Hewes RS, Taghert PH (2001) Neuropeptides and neuropeptide receptors in the *Drosophila melanogaster* genome. *Genome Res* 11:1126–1142
- Hewes RS, Snowdeal EC 3rd, Saitoe M, Taghert PH (1998) Functional redundancy of FMRFamide-related peptides at the *Drosophila* larval neuromuscular junction. *J Neurosci* 18:7138–7151
- Hewes RS, Park D, Gauthier SA, Schaefer AM, Taghert PH (2003) The bHLH protein dimmed controls neuroendocrine cell differentiation in *Drosophila*. *Development* 130:1771–1781
- Hillyer JF, Pass G (2020) The insect circulatory system: structure, function, and evolution. *Annu Rev Entomol* 65:121–143
- Hökfelt T, Millhorn D, Serogy K, Tsuruo Y, Ceccatelli S, Lindh B, Meister B, Melander T, Schalling M, Bartfai T (1987) Coexistence of peptides with classical neurotransmitters. *Experientia* 43:768–780
- Hökfelt T, Barde S, Xu Z-QD, Kuteeva E, Rüegg J, Le Maitre E, Risling M, Kehr J, Ihnatko R, Theodorsson E, Palkovits M, Deakin W, Bagdy G, Juhasz G, Prud'homme HJ, Mechawar N, Diaz-Hejtz R, Ögren SO (2018) Neuropeptide and small transmitter coexistence: fundamental studies and relevance to mental illness. *Frontiers in Neural Circuits* 12:106
- Homberg U, Davis NT, Hildebrand JG (1991) Peptide-immunocytochemistry of neurosecretory cells in the brain and retrocerebral complex of the sphinx moth *Manduca sexta*. *J Comp Neurol* 303:35–52
- Hückesfeld S, Peters M, Pankratz MJ (2016) Central relay of bitter taste to the protocerebrum by peptidergic interneurons in the *Drosophila* brain. *Nat Commun* 7:12796
- Husson SJ, Mertens I, Janssen T, Lindemans M, Schoofs L (2007) Neuropeptidergic signaling in the nematode *Caenorhabditis elegans*. *Prog Neurobiol* 82:33–55
- Ikeya T, Galic M, Belawat P, Nairz K, Hafen E (2002) Nutrient-dependent expression of insulin-like peptides from neuroendocrine cells in the CNS contributes to growth regulation in *Drosophila*. *Curr Biol* 12:1293–1300
- Imura E, Shimada-Niwa Y (2020) The corazonin-PTTH neuronal axis controls systemic body growth by regulating basal Ecdysteroid biosynthesis in *Drosophila melanogaster*. *Curr Biol* 30, 2156–2165
- Inagaki HK, Panse KM, Anderson DJ (2014) Independent, reciprocal neuromodulatory control of sweet and bitter taste sensitivity during starvation in *Drosophila*. *Neuron* 84:806–820
- Ingleton PM, Bendell LA, Flanagan JA, Teitsma C, Balment RJ (2002) Calcium-sensing receptors and parathyroid hormone-related protein in the caudal neurosecretory system of the flounder (*Platichthys flesus*). *J Anat* 200:487–497
- Jekely G (2013) Global view of the evolution and diversity of metazoan neuropeptide signaling. *Proc Natl Acad Sci U S A* 110:8702–8707
- Jékely G, Melzer S, Beets I, Kadow ICG, Koene J, Haddad S, Holden-Dye L (2018) The long and the short of it – a perspective on peptidergic regulation of circuits and behaviour. *The Journal of Experimental Biology* 221:jeb166710
- Jourjine N, Mullaney BC, Mann K, Scott K (2016) Coupled sensing of hunger and thirst signals balances sugar and water consumption. *Cell* 166:855–866
- Kahsai L, Kapan N, Dircksen H, Winther ÅM, Nässel DR (2010) Metabolic stress responses in *Drosophila* are modulated by brain neurosecretory cells that produce multiple neuropeptides. *PLoS One* 5:e11480
- Kannangara JR, Henstridge MA, Parsons LM, Kondo S, Mirth CK, Warr CG (2019) Neuropeptide F receptor acts in the *Drosophila* prothoracic gland to regulate growth and developmental timing. [bioRxiv:2019.12.20.378967](https://doi.org/10.1101/2019.12.20.378967)
- Kapan N, Lushchak OV, Luo J, Nässel DR (2012) Identified peptidergic neurons in the *Drosophila* brain regulate insulin-producing cells, stress responses and metabolism by coexpressed short neuropeptide F and corazonin. *Cell Mol Life Sci* 69:4051–4066
- Kataoka H, Toschi A, Li JP, Carney RL, Schooley DA, Kramer SJ (1989a) Identification of an Allatotropin from adult *Manduca sexta*. *Science* 243:1481–1483
- Kataoka H, Troetschler RG, Li JP, Kramer SJ, Carney RL, Schooley DA (1989b) Isolation and identification of a diuretic hormone from the tobacco hornworm, *Manduca sexta*. *Proc Natl Acad Sci U S A* 86: 2976–2980
- Kean L, Cazenave W, Costes L, Broderick KE, Graham S, Pollock VP, Davies SA, Veenstra JA, Dow JA (2002) Two nitridergic peptides are encoded by the gene capability in *Drosophila melanogaster*. *Am J Physiol Regul Integr Comp Physiol* 282:R1297–R1307
- Keene AC, Mazzoni EO, Zhen J, Younger MA, Yamaguchi S, Blau J, Desplan C, Sprecher SG (2011) Distinct visual pathways mediate *Drosophila* larval light avoidance and circadian clock entrainment. *J Neurosci* 31:6527
- Kim J, Neufeld TP (2015) Dietary sugar promotes systemic TOR activation in *Drosophila* through AKH-dependent selective secretion of Dilp3. *Nat Commun* 6:6846
- Kim SK, Rulifson EJ (2004) Conserved mechanisms of glucose sensing and regulation by *Drosophila* corpora cardiaca cells. *Nature* 431: 316–320
- Kim SM, Su CY, Wang JW (2017) Neuromodulation of innate behaviors in *Drosophila*. *Annu Rev Neurosci* 40:327–348
- King AN, Barber AF, Smith AE, Dreyer AP, Sitaraman D, Nitabach MN, Cavanaugh DJ, Sehgal A (2017) A Peptidergic circuit links the circadian clock to locomotor activity. *Curr Biol* 27(1915–1927): e1915
- King AN, Schwarz JE, Hsu CT, Barber AF, Sehgal A (2020) A circuit mechanism underlying suppression of circadian signals by homeostatic sleep drive. [bioRxiv:2020.04.20.20290686](https://doi.org/10.1101/2020.04.20.20290686)
- Koyama T, Mirth CK (2016) Growth-blocking peptides as nutrition-sensitive signals for insulin secretion and body size regulation. *PLoS Biol* 14:e1002392
- Kramer SJ, Toschi A, Miller CA, Kataoka H, Quistad GB, Li JP, Carney RL, Schooley DA (1991) Identification of an allatostatin from the tobacco hornworm *Manduca sexta*. *Proc Natl Acad Sci U S A* 88: 9458–9462
- Kreienkamp HJ, Larusson HJ, Witte I, Roeder T, Birgul N, Honck HH, Harder S, Ellinghausen G, Buck F, Richter D (2002) Functional annotation of two orphan G-protein-coupled receptors, Drostar1 and -2, from *Drosophila melanogaster* and their ligands by reverse pharmacology. *J Biol Chem* 277:39937–39943
- Kreneisz O, Chen X, Fridell YW, Mulkey DK (2010) Glucose increases activity and Ca(2+) in insulin-producing cells of adult *Drosophila*. *Neuroreport* 21:1116–1120
- Kubrak OI, Kucerova L, Theopold U, Nässel DR (2014) The sleeping beauty: how reproductive diapause affects hormone signaling, metabolism, immune response and somatic maintenance in *Drosophila melanogaster*. *PLoS One* 9:e113051
- Kubrak OI, Lushchak OV, Zandawala M, Nässel DR (2016) Systemic corazonin signalling modulates stress responses and metabolism in *Drosophila*. *Open Biol* 6
- Kwak SJ, Hong SH, Bajracharya R, Yang SY, Lee KS, Yu K (2013) *Drosophila* adiponectin receptor in insulin producing cells regulates glucose and lipid metabolism by controlling insulin secretion. *PLoS One* 8:e68641
- Lagueux M, Lwoff L, Meister M, Goltzene F, Hoffmann JA (1990) cDNAs from neurosecretory cells of brains of *Locusta migratoria* (Insecta, Orthoptera) encoding a novel member of the superfamily of insulins. *Eur J Biochem* 187:249–254

- LaJeunesse DR, Johnson B, Presnell JS, Catignas KK, Zapotoczny G (2010) Peristalsis in the junction region of the *Drosophila* larval midgut is modulated by DH31 expressing enteroendocrine cells. *BMC Physiol* 10:14
- Lange A, Alim U, Vandersmissen HP, Mizoguchi A, Vanden Broeck J, Orchard I (2012) The distribution and physiological effects of the myoinhibiting peptides in the kissing bug, *Rhodnius prolixus*. *Front Neurosci* 6:98
- Le Tissier P, Campos P, Lafont C, Romanò N, Hodson DJ, Mollard P (2017) An updated view of hypothalamic–vascular–pituitary unit function and plasticity. *Nat Rev Endocrinol* 13:257–267
- Lederis K, Letter A, McMaster D, Moore G, Schlesinger D (1982) Complete amino acid sequence of urotensin I, a hypotensive and corticotropin-releasing neuropeptide from *Catostomus*. *Science* 218:162–165
- Lee G, Park JH (2004) Hemolymph sugar homeostasis and starvation-induced hyperactivity affected by genetic manipulations of the adipokinetic hormone-encoding gene in *Drosophila melanogaster*. *Genetics* 167:311–323
- Lee KS, You KH, Choo JK, Han YM, Yu K (2004) *Drosophila* short neuropeptide F regulates food intake and body size. *J Biol Chem* 279:50781–50789
- Lee KM, Daubnerova I, Isaac RE, Zhang C, Choi S, Chung J, Kim YJ (2015) A neuronal pathway that controls sperm ejection and storage in female *Drosophila*. *Curr Biol* 25:790–797
- Lemaître B, Miguel-Aliaga I (2013) The digestive tract of *Drosophila melanogaster*. *Annu Rev Genet* 47(47):377–404
- Lenz O, Xiong JM, Nelson MD, Raizen DM, Williams JA (2015) FMRamide signaling promotes stress-induced sleep in *Drosophila*. *Brain Behav Immun* 47:141–148
- Li C, Kim K (2008) Neuropeptides. *WormBook*. Ed: the *C. elegans* research community
- Li Y, Unnithan GC, Veenstra JA, Feyereisen R, Noriega FG (2003) Stimulation of JH biosynthesis by the corpora allata of adult female *Aedes aegypti* in vitro: effect of farnesoic acid and *Aedes* allatotropin. *J Exp Biol* 206:1825–1832
- Li J-J, Shi Y, Lin G-L, Yang C-H, Liu T-X (2020) Genome-wide identification of neuropeptides and their receptor genes in *Bemisia tabaci* and their transcript accumulation change in response to temperature stresses. *Insect Science ePub*
- Liddle RA (1997) Cholecystokinin cells. *Annu Rev Physiol* 59:221–242
- Liessem S, Ragionieri L, Neupert S, Büschges A, Predel R (2018) Transcriptomic and Neuropeptidomic analysis of the stick insect, *Carausius morosus*. *J Proteome Res* 17:2192–2204
- Lin S, Senapati B, Tsao C-H (2019) Neural basis of hunger-driven behaviour in *Drosophila*. *Open Biol* 9:180259
- Lingo PR, Zhao Z, Shen P (2007) Co-regulation of cold-resistant food acquisition by insulin- and neuropeptide Y-like systems in *Drosophila melanogaster*. *Neuroscience* 148:371–374
- Liu Y, Luo J, Carlsson MA, Nässel DR (2015) Serotonin and insulin-like peptides modulate leucokinin-producing neurons that affect feeding and water homeostasis in *Drosophila*. *J Comp Neurol* 523:1840–1863
- Liu Y, Liao S, Veenstra JA, Nässel DR (2016) *Drosophila* insulin-like peptide 1 (DILP1) is transiently expressed during non-feeding stages and reproductive dormancy. *Sci Rep* 6:26620
- Liutkeviciute Z, Koehbach J, Eder T, Gil-Mansilla E, Gruber CW (2016) Global map of oxytocin/vasopressin-like neuropeptide signalling in insects. *Sci Rep* 6:39177
- Loi PK, Tublitz NJ (2004) Sequence and expression of the CAPA/CAP2b gene in the tobacco hawkmoth, *Manduca sexta*. *J Exp Biol* 207:3681–3691
- Lorenz MW, Kellner R, Hoffmann KH (1995) A family of neuropeptides that inhibit juvenile hormone biosynthesis in the cricket, *Gryllus bimaculatus*. *J Biol Chem* 270:21103–21108
- Luan H, Lemon WC, Peabody NC, Pohl JB, Zelensky PK, Wang D, Nitabach MN, Holmes TC, White BH (2006) Functional dissection of a neuronal network required for cuticle tanning and wing expansion in *Drosophila*. *J Neurosci* 26:573–584
- Lubawy J, Urbański A, Colinet H, Pflüger H-J, Marciniak P (2020) Role of the insect neuroendocrine system in the response to cold stress. *Front Physiol* 11:376
- Lundquist T, Nässel DR (1990) Substance P-, FMRamide-, and gastrin/cholecystokinin-like immunoreactive neurons in the thoraco-abdominal ganglia of the flies *Drosophila* and *Calliphora*. *J Comp Neurol* 294:161–178
- MacMillan HA, Nazal B, Wali S, Yerushalmi GY, Misyura L, Donini A, Paluzzi J-P (2018) Anti-diuretic activity of a CAPA neuropeptide can compromise *Drosophila* chill tolerance. *The Journal of Experimental Biology* 221:jeb185884
- Mandel SJ, Shoaf ML, Braco JT, Silver WL, Johnson EC (2018) Behavioral aversion to AITC requires both painless and dTRPA1 in *Drosophila*. *Frontiers in Neural Circuits* 12:45–45
- Martelli C, Pech U, Kobbenbring S, Pauls D, Bahl B, Sommer MV, Pooryasin A, Barth J, Arias CWP, Vassiliou C, Luna AJF, Poppinga H, Richter FG, Wegener C, Fiala A, Riemensperger T (2017) SIFamide translates hunger signals into appetitive and feeding behavior in *Drosophila*. *Cell Rep* 20:464–478
- Masood M, Orchard I (2014) Molecular characterization and possible biological roles of allatotropin in *Rhodnius prolixus*. *Peptides* 53:159–171
- Megha, Wegener C, Hasan G (2019) ER-Ca²⁺ sensor STIM regulates neuropeptides required for development under nutrient restriction in *Drosophila*. *PLoS One* 14:e0219719–e0219719
- Meiselman M, Lee SS, Tran R-T, Dai H, Ding Y, Rivera-Perez C, Wijesekera TP, Dauwalder B, Noriega FG, Adams ME (2017) Endocrine network essential for reproductive success in *Drosophila melanogaster*. *Proc Natl Acad Sci* 114:E3849
- Melcher C, Pankratz MJ (2005) Candidate gustatory interneurons modulating feeding behavior in the *Drosophila* brain. *PLoS Biol* 3:e305
- Meng X, Wahlstrom G, Immonen T, Kolmer M, Tirronen M, Predel R, Kalkinen N, Heino TI, Sariola H, Roos C (2002) The *Drosophila* hugin gene codes for myostimulatory and ecdysis-modifying neuropeptides. *Mech Dev* 117:5–13
- Meschi E, Léopold P, Delanoue R (2019) An EGF-responsive neural circuit couples insulin secretion with nutrition in *Drosophila*. *Developmental Cell* 48:76–86.e75
- Miguel-Aliaga I, Thor S, Gould AP (2008) Postmitotic specification of *Drosophila* insulinergic neurons from pioneer neurons. *PLoS Biol* 6:e58
- Mirabeau O, Joly JS (2013) Molecular evolution of peptidergic signaling systems in bilaterians. *Proc Natl Acad Sci U S A* 110:E2028–E2037
- Miyamoto T, Slone J, Song X, Amrein H (2012) A fructose receptor functions as a nutrient sensor in the *Drosophila* brain. *Cell* 151:1113–1125
- Mizoguchi A, Ishizaki H, Nagasawa H, Kataoka H, Isogai A, Tamura S, Suzuki A, Fujino M, Kitada C (1987) A monoclonal antibody against a synthetic fragment of bombyxin (4K-prothoracicotropic hormone) from the silkworm, *Bombyx mori*: characterization and immunohistochemistry. *Mol Cell Endocrinol* 51:227–235
- Nagata S, Zhou YJ (2019) Chapter four - feeding-modulating neuropeptides and peptide hormones in insects. In: Jurenka R (ed) *Advances in Insect Physiology*. Academic Press, pp 137–172
- Nagy D, Cusumano P, Andreatta G (2019a) Peptidergic signaling from clock neurons regulates reproductive dormancy in *Drosophila melanogaster*. *PLoS Genet* 15:e1008158
- Nagy D, Cusumano P, Andreatta G, Anduaga AM, Hermann-Luibl C, Reinhard N, Gestó J, Wegener C, Mazzotta G, Rosato E, Kyriacou CP, Helfrich-Förster C, Costa R (2019b) Peptidergic signaling from clock neurons regulates reproductive dormancy in *Drosophila melanogaster*. *PLoS Genet* 15:e1008158

- Nässel DR (1996) Neuropeptides, amines and amino acids in an elementary insect ganglion: functional and chemical anatomy of the unfused abdominal ganglion. *Prog Neurobiol* 48:325–420
- Nässel DR (2009) Neuropeptide signaling near and far: how localized and timed is the action of neuropeptides in brain circuits? *Invertebr Neurosci* 9:57–75
- Nässel DR (2018) Substrates for neuronal cotransmission with neuropeptides and small molecule neurotransmitters in *Drosophila*. *Front Cell Neurosci* 12:83
- Nässel DR, Larhammar DS (2013) Neuropeptides and peptide hormones. *Neurosciences - from molecule to behavior: a university textbook*. Springer, Berlin, pp 213–237
- Nässel DR, Vanden Broeck J (2016) Insulin/IGF signaling in *Drosophila* and other insects: factors that regulate production, release and post-release action of the insulin-like peptides. *Cell Mol Life Sci* 73:271–290
- Nässel DR, Zandawala M (2019) Recent advances in neuropeptide signaling in *Drosophila*, from genes to physiology and behavior. *Prog Neurobiol* 179:101607
- Nässel DR, Ohlsson LG, Cantera R (1988) Metamorphosis of identified neurons innervating thoracic neurohemal organs in the blowfly: transformation of cholecystokininlike immunoreactive neurons. *J Comp Neurol* 267:343–356
- Nässel DR, Cantera R, Karlsson A (1992) Neurons in the cockroach nervous system reacting with antisera to the neuropeptide leucokinin I. *J Comp Neurol* 322:45–67
- Nässel DR, Shiga S, Mohrher CJ, Rao KR (1993) Pigment-dispersing hormone-like peptide in the nervous system of the flies *Phormia* and *Drosophila*: immunocytochemistry and partial characterization. *J Comp Neurol* 331:183–198
- Nässel DR, Bayraktaroglu E, Dirksen H (1994) Neuropeptides in neurosecretory and efferent neural systems of insect thoracic and abdominal ganglia. *Zool Sci* 11:15–31
- Nässel DR, Kubrak OI, Liu Y, Luo J, Lushchak OV (2013) Factors that regulate insulin producing cells and their output in *Drosophila*. *Front Physiol* 4:252
- Nässel DR, Liu Y, Luo J (2015) Insulin/IGF signaling and its regulation in *Drosophila*. *Gen Comp Endocrinol* 15:255–266
- Nässel DR, Pauls D, Huetteroth W (2019) Neuropeptides in modulation of *Drosophila* behavior: how to get a grip on their pleiotropic actions. *Curr Opin Insect Sci* 36:1–8
- Neupert S, Johard HA, Nässel DR, Predel R (2007) Single-cell peptidomics of *Drosophila melanogaster* neurons identified by Gal4-driven fluorescence. *Anal Chem* 79:3690–3694
- Nichols R (2003) Signaling pathways and physiological functions of *Drosophila melanogaster* FMRFamide-related peptides. *Annu Rev Entomol* 48:485–503
- Norris DO (1997) *Vertebrate Endocrinology*. Academic Press/ Elsevier Science, San Diego
- Nusbaum MP, Blitz DM, Marder E (2017) Functional consequences of neuropeptide and small-molecule co-transmission. *Nat Rev Neurosci* 18:389–403
- Odekunle EA, Elphick MR (2020) Comparative and evolutionary physiology of vasopressin/ oxytocin-type neuropeptide signaling in invertebrates. *Front Endocrinol (Lausanne)* 11:225
- Oh Y, Lai JS-Y, Mills HJ, Erdjument-Bromage H, Giammarinaro B, Saadipour K, Wang JG, Abu F, Neupert TA, Suh GSB (2019) A glucose-sensing neuron pair regulates insulin and glucagon in *Drosophila*. *Nature* 574:559–564
- Ohhara Y, Kobayashi S, Yamakawa-Kobayashi K, Yamanaka N (2018) Adult-specific insulin-producing neurons in *Drosophila melanogaster*. *Journal of Comparative Neurology* 526:1351–1367
- Okusawa S, Kohsaka H, Nose A (2014) Serotonin and downstream leucokinin neurons modulate larval turning behavior in *Drosophila*. *J Neurosci* 34:2544–2558
- Oldham S, Hafen E (2003) Insulin/IGF and target of rapamycin signaling: a TOR de force in growth control. *Trends Cell Biol* 13:79–85
- Overgaard J, MacMillan HA (2017) The integrative physiology of insect chill tolerance. *Annu Rev Physiol* 79:187–208
- Owusu-Ansah E, Perrimon N (2014) Modeling metabolic homeostasis and nutrient sensing in *Drosophila*: implications for aging and metabolic diseases. *Dis Model Mech* 7:343–350
- Owusu-Ansah E, Perrimon N (2015) Stress signaling between organs in *Metazoa*. *Annu Rev Cell Dev Biol* 31:497–522
- Paluzzi JP, Orchard I (2010) A second gene encodes the anti-diuretic hormone in the insect, *Rhodnius prolixus*. *Mol Cell Endocrinol* 317:53–63
- Paluzzi JP, Russell WK, Nachman RJ, Orchard I (2008) Isolation, cloning, and expression mapping of a gene encoding an antidiuretic hormone and other CAPA-related peptides in the disease vector, *Rhodnius prolixus*. *Endocrinology* 149:4638–4646
- Park D, Veenstra JA, Park JH, Taghert PH (2008) Mapping peptidergic cells in *Drosophila*: where DIMM fits in. *PLoS One* 3:e1896
- Park S, Bustamante EL, Antonova J, McLean GW, Kim SK (2011) Specification of *Drosophila* corpora cardiaca neuroendocrine cells from mesoderm is regulated by notch signaling. *PLoS Genet* 7:e1002241
- Park S, Alfa RW, Topper SM, Kim GE, Kockel L, Kim SK (2014) A genetic strategy to measure circulating *Drosophila* insulin reveals genes regulating insulin production and secretion. *PLoS Genet* 10:e1004555
- Park JH, Chen J, Jang S, Ahn TJ, Kang K, Choi MS, Kwon JY (2016) A subset of enteroendocrine cells is activated by amino acids in the *Drosophila* midgut. *FEBS Lett*
- Patel M, Chung JS, Kay I, Mallet AI, Gibbon CR, Thompson KS, Bacon JP, Coast GM (1994) Localization of Locusta-DP in locust CNS and hemolymph satisfies initial hormonal criteria. *Peptides* 15:591–602
- Patel H, Orchard I, Veenstra JA, Lange AB (2014) The distribution and physiological effects of three evolutionarily and sequence-related neuropeptides in *Rhodnius prolixus*: Adipokinetic hormone, corazonin and adipokinetic hormone/corazonin-related peptide. *Gen Comp Endocrinol* 195:1–8
- Pauls D, Selcho M, Räderscheidt J, Amatobi K, Fekete A, Krischke M, Hermann-Luibl C, Helfrich-Förster C, Kühnlein RP, Müller MJ, Wegener C (2020) Endocrine fine-tuning of daily locomotor activity patterns under non-starving conditions in *Drosophila*. *bioRxiv*: 2020.2002.2013.947556
- Peabody NC, Diao F, Luan H, Wang H, Dewey EM, Honegger HW, White BH (2008) Bursicon functions within the *Drosophila* CNS to modulate wing expansion behavior, hormone secretion, and cell death. *J Neurosci* 28:14379–14391
- Pearson D, Shively JE, Clark BR, Geschwind II, Barkley M, Nishioka RS, Bern HA (1980) Urotensin II: a somatostatin-like peptide in the caudal neurosecretory system of fishes. *Proc Natl Acad Sci U S A* 77:5021–5024
- Petrucelli E, Lark A, Mrkvicka JA, Kitamoto T (2020) Significance of DopEcR, a G-protein coupled dopamine/ecdysteroid receptor, in physiological and behavioral response to stressors. *J Neurogenet* 34:55–68
- Pool AH, Scott K (2014) Feeding regulation in *Drosophila*. *Curr Opin Neurobiol* 29:57–63
- Predel R (2001) Peptidergic neurohemal system of an insect: mass spectrometric morphology. *J Comp Neurol* 436:363–375
- Predel R, Wegener C (2006) Biology of the CAPA peptides in insects. *Cell Mol Life Sci* 63:2477–2490
- Predel R, Herbert Z, Eckert M (2003) Neuropeptides in perisymphathetic organs of *Manduca sexta*: specific composition and changes during the development. *Peptides* 24:1457–1464
- Predel R, Wegener C, Russell WK, Tichy SE, Russell DH, Nachman RJ (2004) Peptidomics of CNS-associated neurohemal systems of adult

- Drosophila melanogaster*: a mass spectrometric survey of peptides from individual flies. *J Comp Neurol* 474:379–392
- Pu Y, Zhang Y, Zhang Y, Shen P (2018) Two *Drosophila* neuropeptide Y-like neurons define a reward module for transforming appetitive odor representations to motivation. *Sci Rep* 8:11658
- Raabe M (1989) Recent developments in insect neurohormones. Plenum Press, New York
- Radford JC, Davies SA, Dow JA (2002) Systematic G-protein-coupled receptor analysis in *Drosophila melanogaster* identifies a leucokinin receptor with novel roles. *J Biol Chem* 277:38810–38817
- Rajan A, Perrimon N (2011) *Drosophila* as a model for interorgan communication: lessons from studies on energy homeostasis. *Dev Cell* 21:29–31
- Rajan A, Perrimon N (2012) *Drosophila* cytokine unpaired 2 regulates physiological homeostasis by remotely controlling insulin secretion. *Cell* 151:123–137
- Rauschenbach IY, Karpova EK, Adonyeva NV, Andreenkova OV, Faddeeva NV, Burdina EV, Alekseev AA, Menshanov PN, Gruntenko NE (2014) Disruption of insulin signalling affects the neuroendocrine stress reaction in *Drosophila* females. *J Exp Biol* 217:3733–3741
- Ravi P, Trivedi D, Hasan G (2018) FMRFa receptor stimulated Ca²⁺ signals alter the activity of flight modulating central dopaminergic neurons in *Drosophila melanogaster*. *PLoS Genet* 14:e1007459
- Reiher W, Shirras C, Kahnt J, Baumeister S, Isaac RE, Wegener C (2011) Peptidomics and peptide hormone processing in the *Drosophila* midgut. *J Proteome Res* 10:1881–1892
- Ren GR, Hauser F, Rewitz KF, Kondo S, Engelbrecht AF, Didriksen AK, Schjott SR, Sembach FE, Li S, Sogaard KC, Sondergaard L, Grimmelikhuijzen CJ (2015) CCHamide-2 is an orexigenic brain-gut peptide in *Drosophila*. *PLoS One* 10:e0133017
- Rewitz KF, Yamanaka N, Gilbert LI, O'Connor MB (2009) The insect neuropeptide PTTH activates receptor tyrosine kinase torso to initiate metamorphosis. *Science* 326:1403–1405
- Rewitz KF, Yamanaka N, O'Connor MB (2013) Developmental checkpoints and feedback circuits time insect maturation. *Curr Top Dev Biol* 103:1–33
- Riddiford LM (2008) Juvenile hormone action: a 2007 perspective. *J Insect Physiol* 54:895–901
- Roeder T (2020) The control of metabolic traits by octopamine and tyramine in invertebrates. *The Journal of Experimental Biology* 223: jeb194282
- Roller L, Cizmar D, Bednar B, Zitnan D (2016) Expression of RYamide in the nervous and endocrine system of *Bombyx mori*. *Peptides* 80: 72–79
- Romanov RA, Alpár A, Hökfelt T, Harkany T (2019) Unified classification of molecular, network, and endocrine features of hypothalamic neurons. *Annu Rev Neurosci* 42:1–26
- Root CM, Ko KI, Jafari A, Wang JW (2011) Presynaptic facilitation by neuropeptide signaling mediates odor-driven food search. *Cell* 145: 133–144
- Rulifson EJ, Kim SK, Nusse R (2002) Ablation of insulin-producing neurons in flies: growth and diabetic phenotypes. *Science* 296: 1118–1120
- Sano H, Nakamura A, Texada MJ, Truman JW, Ishimoto H, Kamikouchi A, Nibu Y, Kume K, Ida T, Kojima M (2015) The nutrient-responsive hormone CCHamide-2 controls growth by regulating insulin-like peptides in the brain of *Drosophila melanogaster*. *PLoS Genet* 11:e1005209
- Santos JG, Vömel M, Struck R, Homberg U, Nässel DR, Wegener C (2007) Neuroarchitecture of peptidergic systems in the larval ventral ganglion of *Drosophila melanogaster*. *PLoS One* 2:e695
- Sarkar NR, Tobe SS, Orchard I (2003) The distribution and effects of Dippu-allatostatin-like peptides in the blood-feeding bug, *Rhodnius prolixus*. *Peptides* 24:1553–1562
- Sato Y, Ikeda M, Yamashita O (1994) Neurosecretory cells expressing the gene for common precursor for diapause hormone and pheromone biosynthesis-activating neuropeptide in the subesophageal ganglion of the silkworm, *Bombyx mori*. *Gen Comp Endocrinol* 96:27–36
- Saunders DS, Henrich VC, Gilbert LI (1989) Induction of diapause in *Drosophila melanogaster*: photoperiodic regulation and the impact of arrhythmic clock mutations on time measurement. *Proc Natl Acad Sci U S A* 86:3748–3752
- Scharrer B (1987) Insects as models in neuroendocrine research. *Annu Rev Entomol* 32:1–16
- Scharrer E, Scharrer B (1963) Neuroendocrinology. Columbia University Press, New York
- Schlegel P, Texada MJ, Miroshchnikov A, Schoofs A, Huckesfeld S, Peters M, Schneider-Mizell CM, Lacin H, Li F, Fetter RD, Truman JW, Cardona A, Pankratz MJ (2016) Synaptic transmission parallels neuromodulation in a central food-intake circuit. *Elife* 5
- Schneider LE, Roberts MS, Taghert PH (1993a) Cell type-specific transcriptional regulation of the *Drosophila* FMRFamide neuropeptide gene. *Neuron* 10:279–291
- Schneider LE, Sun ET, Garland DJ, Taghert PH (1993b) An immunocytochemical study of the FMRFamide neuropeptide gene products in *Drosophila*. *J Comp Neurol* 337:446–460
- Schoofs A, Hückesfeld S, Schlegel P, Miroshchnikov A, Peters M, Zeymer M, Spiess R, Chiang AS, Pankratz MJ (2014) Selection of motor programs for suppressing food intake and inducing locomotion in the *Drosophila* brain. *PLoS Biol* 12:e1001893
- Schoofs L, De Loof A, Van Hiel M (2017) Neuropeptides as regulators of behavior in insects. *Annu Rev Entomol* 62:35–52
- Scopelliti A, Cordero JB, Diao F, Strathdee K, White BH, Sansom OJ, Vidal M (2014) Local control of intestinal stem cell homeostasis by enteroendocrine cells in the adult *Drosophila* midgut. *Curr Biol* 24: 1199–1211
- Sedra L, Lange AB (2016) Cloning and expression of long neuropeptide F and the role of FMRFamide-like peptides in regulating egg production in the Chagas vector, *Rhodnius prolixus*. *Peptides* 82:1–11
- Selcho M, Millan C, Palacios-Munoz A, Ruf F, Ubillo L, Chen J, Bergmann G, Ito C, Silva V, Wegener C, Ewer J (2017) Central and peripheral clocks are coupled by a neuropeptide pathway in *Drosophila*. *Nat Commun* 8:15563
- Selcho M, Muhlbauer B, Hensgen R, Shiga S, Wegener C, Yasuyama K (2018) Anatomical characterization of PDF-tri neurons and peptidergic neurons associated with eclosion behavior in *Drosophila*. *J Comp Neurol* 526:1307–1328
- Sellami A, Agricola HJ, Veenstra JA (2011) Neuroendocrine cells in *Drosophila melanogaster* producing GPA2/GPB5, a hormone with homology to LH, FSH and TSH. *Gen Comp Endocrinol* 170:582–588
- Semaniuk UV, Gospodaryov DV, Feden'ko KM, Yurkevych IS, Vaiserman AM, Storey KB, Simpson SJ, Lushchak O (2018) Insulin-like peptides regulate feeding preference and metabolism in *Drosophila*. *Front Physiol* 9:1083
- Senapati B, Tsao C-H, Juan Y-A, Chiu T-H, Wu C-L, Waddell S, Lin S (2019) A neural mechanism for deprivation state-specific expression of relevant memories in *Drosophila*. *Nat Neurosci* 22:2029–2039
- Shen P, Cai HN (2001) *Drosophila* neuropeptide F mediates integration of chemosensory stimulation and conditioning of the nervous system by food. *J Neurobiol* 47:16–25
- Shiga S, Toyoda I, Numata H (2000) Neurons projecting to the retrocerebral complex of the adult blow fly, *Protophormia terraenovae*. *Cell Tissue Res* 299:427–439
- Siegmund T, Korge G (2001) Innervation of the ring gland of *Drosophila melanogaster*. *J Comp Neurol* 431:481–491
- Söderberg JA, Birse RT, Nässel DR (2011) Insulin production and signaling in renal tubules of *Drosophila* is under control of tachykinin-related peptide and regulates stress resistance. *PLoS One* 6:e19866

- Söderberg JA, Carlsson MA, Nässel DR (2012) Insulin-producing cells in the *Drosophila* brain also express satiety-inducing cholecystokinin-like peptide, drosulfakinin. *Front Endocrinol* 3:109
- Song W, Veenstra JA, Perrimon N (2014) Control of lipid metabolism by tachykinin in *Drosophila*. *Cell Rep* 9:40–47
- Stafflinger E, Hansen KK, Hauser F, Schneider M, Cazzamali G, Williamson M, Grimmelikhuijzen CJ (2008) Cloning and identification of an oxytocin/vasopressin-like receptor and its ligand from insects. *Proc Natl Acad Sci U S A* 105:3262–3267
- Strand FL (1999) Neuropeptides: regulators of physiological processes. The MIT Press, Cambridge
- Strand MR, Brown MR, Vogel KJ (2016) Chapter six - mosquito peptide hormones: diversity, production, and function. In: Raikhel AS (ed) *Advances in Insect Physiology*. Academic Press, pp 145–188
- Sun J, Liu C, Bai X, Li X, Li J, Zhang Z, Zhang Y, Guo J, Li Y (2017) *Drosophila* FIT is a protein-specific satiety hormone essential for feeding control. *Nat Commun* 8:14161
- Svensson E, Apergis-Schoute J, Burnstock G, Nusbaum MP, Parker D, Schiöth HB (2019) General principles of neuronal co-transmission: insights from multiple model systems. *Frontiers in Neural Circuits* 12:117
- Taghert PH, Nitabach MN (2012) Peptide neuromodulation in invertebrate model systems. *Neuron* 76:82–97
- Takei Y, Ando H, Tsutsui K (eds) (2015) *Handbook of hormones: comparative endocrinology for basic and clinical research*. Academic Press/Elsevier
- Talsma AD, Christov CP, Terriente-Felix A, Linneweber GA, Perea D, Wayland M, Shafer OT, Miguel-Aliaga I (2012) Remote control of renal physiology by the intestinal neuropeptide pigment-dispersing factor in *Drosophila*. *Proc Natl Acad Sci U S A* 109:12177–12182
- Tamarelle M, Girardie J (1989) Immunohistochemical investigation of locust neuroparsin-like substances in several insects, in some other invertebrates, and vertebrates. *Histochemistry* 91:431–435
- Tatar M, Yin C (2001) Slow aging during insect reproductive diapause: why butterflies, grasshoppers and flies are like worms. *Exp Gerontol* 36:723–738
- Tatar M, Kopelman A, Epstein D, Tu MP, Yin CM, Garofalo RS (2001) A mutant *Drosophila* insulin receptor homolog that extends lifespan and impairs neuroendocrine function. *Science* 292:107–110
- Te Brugge VA, Nässel DR, Coast GM, Schooley DA, Orchard I (2001) The distribution of a kinin-like peptide and its co-localization with a CRF-like peptide in the blood-feeding bug, *Rhodnius prolixus*. *Peptides* 22:161–173
- Te Brugge VA, Lombardi VC, Schooley DA, Orchard I (2005) Presence and activity of a Dippu-DH31-like peptide in the blood-feeding bug, *Rhodnius prolixus*. *Peptides* 26:29–42
- Terhzaz S, O'Connell FC, Pollock VP, Kean L, Davies SA, Veenstra JA, Dow JA (1999) Isolation and characterization of a leucokinin-like peptide of *Drosophila melanogaster*. *J Exp Biol* 202:3667–3676
- Terhzaz S, Rosay P, Goodwin SF, Veenstra JA (2007) The neuropeptide SIFamide modulates sexual behavior in *Drosophila*. *Biochem Biophys Res Commun* 352:305–310
- Terhzaz S, Teets NM, Cabrero P, Henderson L, Ritchie MG, Nachman RJ, Dow JAT, Denlinger DL, Davies SA (2015) Insect capa neuropeptides impact desiccation and cold tolerance. *Proc Natl Acad Sci U S A* 112:2882–2887
- Tessmar-Raible K (2007) The evolution of neurosecretory centers in bilaterian forebrains: insights from protostomes. *Semin Cell Dev Biol* 18:492–501
- Tessmar-Raible K, Raible F, Christodoulou F, Guy K, Rembold M, Hausen H, Arendt D (2007) Conserved sensory-neurosecretory cell types in annelid and fish forebrain: insights into hypothalamus evolution. *Cell* 129:1389–1400
- Tong J, Prigeon RL, Davis HW, Bidlingmaier M, Kahn SE, Cummings DE, Tschöp MH, D'Alessio D (2010) Ghrelin suppresses glucose-stimulated insulin secretion and deteriorates glucose tolerance in healthy humans. *Diabetes* 59:2145–2151
- Trapnell C (2015) Defining cell types and states with single-cell genomics. *Genome Res* 25:1491–1498
- Truman JW, Riddiford LM (2019) The evolution of insect metamorphosis: a developmental and endocrine view. *Philosophical Transactions of the Royal Society B: Biological Sciences* 374: 20190070
- Truman JW, Hiruma K, Allee JP, Macwhinnie SG, Champlin DT, Riddiford LM (2006) Juvenile hormone is required to couple imaginal disc formation with nutrition in insects. *Science* 312:1385–1388
- Tsang PW, Orchard I (1991) Distribution of FMRamide-related peptides in the blood-feeding bug, *Rhodnius prolixus*. *J Comp Neurol* 311:17–32
- Tsao C-H, Chen C-C, Lin C-H, Yang H-Y, Lin S (2018) *Drosophila* mushroom bodies integrate hunger and satiety signals to control innate food-seeking behavior. *Elife* 7:e35264
- Tu MP, Yin CM, Tatar M (2005) Mutations in insulin signaling pathway alter juvenile hormone synthesis in *Drosophila melanogaster*. *Gen Comp Endocrinol* 142:347–356
- Vafopoulou X, Steel CGH, Terry KL (2007) Neuroanatomical relations of prothoracicotrophic hormone neurons with the circadian timekeeping system in the brain of larval and adult *Rhodnius prolixus* (Hemiptera). *J Comp Neurol* 503:511–524
- Vallejo DM, Juarez-Carreño S, Bolívar J, Morante J, Dominguez M (2015) A brain circuit that synchronizes growth and maturation revealed through Dilp8 binding to Lgr3. *Science* 350:aac6767
- Vanden Broeck J (2001) Insect G protein-coupled receptors and signal transduction. *Arch Insect Biochem Physiol* 48:1–12
- Vanderveken M, O'Donnell MJ (2014) Effects of diuretic hormone 31, drosokinin, and allatostatin a on transepithelial K⁺ transport and contraction frequency in the midgut and hindgut of larval *Drosophila melanogaster*. *Arch Insect Biochem Physiol* 85:76–93
- Veenstra JA (2009) Peptidergic paracrine and endocrine cells in the midgut of the fruit fly maggot. *Cell Tissue Res*
- Veenstra JA (2010) What the loss of the hormone neuroparsin in the melanogaster subgroup of *Drosophila* can tell us about its function. *Insect Biochem Molec* 40:354–361
- Veenstra JA (2016) Similarities between decapod and insect neuropeptidomes. *PeerJ* 4:e2043
- Veenstra JA, Ida T (2014) More *Drosophila* enteroendocrine peptides: Orcokinin B and the CCHamides 1 and 2. *Cell Tissue Res* 357:607–621
- Veenstra JA, Khammassi H (2017) Rudimentary expression of RYamide in *Drosophila melanogaster* relative to other *Drosophila* species points to a functional decline of this neuropeptide gene. *Insect Biochem Molec* 83:68–79
- Veenstra JA, Šimo L (2020) The TRH-ortholog EFLamide in the migratory locust. *Insect Biochem Molec* 116:103281
- Veenstra JA, Agricola HJ, Sellami A (2008) Regulatory peptides in fruit fly midgut. *Cell Tissue Res* 334:499–516
- Verleyen P, Huybrechts J, Baggerman G, Van Lommel A, De Loof A, Schoofs L (2004) SIFamide is a highly conserved neuropeptide: a comparative study in different insect species. *Biochem Biophys Res Commun* 320:334–341
- Wang S, Tulina N, Carlin DL, Rulifson EJ (2007) The origin of islet-like cells in *Drosophila* identifies parallels to the vertebrate endocrine axis. *Proc Natl Acad Sci U S A* 104:19873–19878
- Wang C, Chin-Sang I, Bendena WG (2012a) The FGLamide-Allatostatins influence foraging behavior in *Drosophila melanogaster*. *PLoS One* 7:e36059
- Wang C, Zhang J, Tobe SS, Bendena WG (2012b) Defining the contribution of select neuropeptides and their receptors in regulating sesquiterpenoid biosynthesis by *Drosophila melanogaster* ring gland/corpus allatum through RNAi analysis. *Gen Comp Endocr* 176:347–353

- Wang Y, Pu Y, Shen P (2013) Neuropeptide-gated perception of appetitive olfactory inputs in *Drosophila* larvae. *Cell Rep* 3:820–830
- Wegener C, Reini T, Jänsch L, Predel R (2006) Direct mass spectrometric peptide profiling and fragmentation of larval peptide hormone release sites in *Drosophila melanogaster* reveals tagma-specific peptide expression and differential processing. *J Neurochem* 96:1362–1374
- Wigby S, Slack C, Grönke S, Martinez P, Calboli FCF, Chapman T, Partridge L (2011) Insulin signalling regulates remating in female *Drosophila*. *Proc R Soc B Biol Sci* 278:424–431
- Williams MJ, Akram M, Barkauskaite D, Patil S, Kotsidou E, Kheder S, Vitale G, Filaferro M, Blemings SW, Maestri G, Hazim N, Vergoni AV, Schiöth HB (2020) CCAP regulates feeding behavior via the NPF pathway in *Drosophila* adults. *Proc Natl Acad Sci U S A* 117:7401
- Wong K, Schweizer J, Nguyen K-NH, Atieh S, Kim WJ (2019) Neuropeptide relay between SIFa signaling controls the experience-dependent mating duration of male *Drosophila*. [bioRxiv:819045](https://doi.org/10.1101/819045)
- Woodhead AP, Stay B, Seidel SL, Khan MA, Tobe SS (1989) Primary structure of four allatostatins: neuropeptide inhibitors of juvenile hormone synthesis. *Proc Natl Acad Sci U S A* 86:5997–6001
- Wu Q, Zhang Y, Xu J, Shen P (2005) Regulation of hunger-driven behaviors by neural ribosomal S6 kinase in *Drosophila*. *Proc Natl Acad Sci U S A* 102:13289–13294
- Wulff JP, Sierra I, Sterkel M, Holtorf M, Van Wielendaele P, Francini F, Broeck JV, Ons S (2017) Orcokinin neuropeptides regulate ecdysis in the hemimetabolous insect *Rhodnius prolixus*. *Insect Biochem Molec* 81:91–102
- Xie J, Sang M, Song X, Zhang S, Kim D, Veenstra JA, Park Y (2020) A new neuropeptide insect parathyroid hormone iPTH in the red flour beetle *Tribolium castaneum*. *PLoS Genet* 16:e1008772
- Xu CS, Januszewski M, Lu Z, Takemura S-Y, Hayworth KJ, Huang G, Shinomiya K, Maitin-Shepard J, Ackerman D, Berg S, Blakely T, Bogovic J, Clements J, Dolafi T, Hubbard P, Kainmueller D, Katz W, Kawase T, Khairy KA, Leavitt L, Li PH, Lindsey L, Neubarth N, Olbris DJ, Otsuna H, Troutman ET, Umayam L, Zhao T, Ito M, Goldammer J, Wolff T, Svirskas R, Schlegel P, Neace ER, Knecht CJ, Alvarado CX, Bailey DA, Ballinger S, Borycz JA, Canino BS, Cheatham N, Cook M, Dreher M, Duclos O, Eubanks B, Fairbanks K, Finley S, Forknall N, Francis A, Hopkins GP, Joyce EM, Kim S, Kirk NA, Kovalyak J, Lauchie SA, Lohff A, Maldonado C, Manley EA, McLin S, Mooney C, Ndama M, Ogundeyi O, Okeoma N, Ordish C, Padilla N, Patrick C, Paterson T, Phillips EE, Phillips EM, Rampally N, Ribeiro C, Robertson MK, Rymer JT, Ryan SM, Sammons M, Scott AK, Scott AL, Shinomiya A, Smith C, Smith K, Smith NL, Sobeski MA, Suleiman A, Swift J, Takemura S, Talebi I, Tarnogorska D, Tenshaw E, Tokhi T, Walsh JJ, Yang T, Horne JA, Li F, Parekh R, Rivlin PK, Jayaraman V, Ito K, Saalfeld S, George R, Meinertzhagen I, Rubin GM, Hess HF, Scheffer LK, Jain V, Plaza SM (2020) A connectome of the adult *Drosophila* central brain. [bioRxiv:2020.01.2021.911859](https://doi.org/10.1101/2020.01.2021.911859)
- Yamada N, Kataoka H, Mizoguchi A (2017) Myosuppressin is involved in the regulation of pupal diapause in the cabbage army moth *Mamestra brassicae*. *Sci Rep* 7:41651
- Yamanaka N, Yamamoto S, Zitnan D, Watanabe K, Kawada T, Satake H, Kaneko Y, Hiruma K, Tanaka Y, Shinoda T, Kataoka H (2008) Neuropeptide receptor transcriptome reveals unidentified neuroendocrine pathways. *PLoS One* 3:e3048
- Yamanaka N, Romero NM, Martin FA, Rewitz KF, Sun M, O'Connor MB, Léopold P (2013) Neuroendocrine control of *Drosophila* larval light preference. *Science* 341:1113
- Yang CH, Belawat P, Hafen E, Jan LY, Jan YN (2008) *Drosophila* egg-laying site selection as a system to study simple decision-making processes. *Science* 319:1679–1683
- Yang Z, Huang R, Fu X, Wang G, Qi W, Mao D, Shi Z, Shen WL, Wang L (2018) A post-ingestive amino acid sensor promotes food consumption in *Drosophila*. *Cell Res* 28:1013–1025
- Yoon JG, Stay B (1995) Immunocytochemical localization of *Diploptera punctata* allatostatin-like peptide in *Drosophila melanogaster*. *J Comp Neurol* 363:475–488
- Yu Y, Huang R, Ye J, Zhang V, Wu C, Cheng G, Jia J, Wang L (2016) Regulation of starvation-induced hyperactivity by insulin and glucagon signaling in adult *Drosophila*. *Elife* 5:e15693
- Yurgel ME, Kakad P, Zandawala M, Nässel DR, Godenschwege TA, Keene AC (2019) A single pair of leucokinin neurons are modulated by feeding state and regulate sleep-metabolism interactions. *PLoS Biol* 17:e2006409
- Zandawala M, Paluzzi JP, Orchard I (2011) Isolation and characterization of the cDNA encoding DH(31) in the kissing bug, *Rhodnius prolixus*. *Mol Cell Endocrinol* 331:79–88
- Zandawala M, Lytvyn Y, Taiakina D, Nässel DR, Orchard I (2012) Cloning of the cDNA, localization, and physiological effects of FGLamide-related allatostatins in the blood-gorging bug, *Rhodnius prolixus*. *Insect Biochem Mol Biol* 42:10–21
- Zandawala M, Marley R, Davies SA, Nässel DR (2018a) Characterization of a set of abdominal neuroendocrine cells that regulate stress physiology using colocalized diuretic peptides in *Drosophila*. *Cellular and Molecular Life Sciences* 75:1099–1115
- Zandawala M, Yurgel ME, Liao S, Texada MJ, Rewitz KF, Keene AC, Nässel DR (2018b) Modulation of *Drosophila* post-feeding physiology and behavior by the neuropeptide leucokinin. *PLoS Genet* 14:e1007767
- Zandawala M, Nguyen T, Johard HAD, Amcoff M, Paluzzi J-P, Nässel DR (2019) Corazonin neuroendocrine pathway orchestrates stress-associated physiology in *Drosophila*. [bioRxiv Preprint:522441](https://doi.org/10.1101/522441)
- Zandawala M, Nguyen T, Segura MB, Johard HAD, Amcoff M, Wegener C, Paluzzi J-P, Nässel DR (2020) A neuroendocrine pathway modulating osmotic stress in *Drosophila*. [bioRxiv Preprint:522441](https://doi.org/10.1101/522441)
- Zavala E, Wedgwood KCA, Voliotis M, Tabak J, Spiga F, Lightman SL, Tsaneva-Atanasova K (2019) Mathematical modelling of endocrine systems. *Trends in Endocrinology & Metabolism* 30:244–257
- Zhao Y, Bretz CA, Hawksworth SA, Hirsh J, Johnson EC (2010) Corazonin neurons function in sexually dimorphic circuitry that shape behavioral responses to stress in *Drosophila*. *PLoS One* 5:e9141
- Zheng Z, Lauritzen JS, Perlman E, Robinson CG, Nichols M, Milkie D, Torrens O, Price J, Fisher CB, Sharifi N, Calle-Schuler SA, Kmecova L, Ali IJ, Karsh B, Trautman ET, Bogovic JA, Hanslovsky P, Jefferis GSXE, Kazhdan M, Khairy K, Saalfeld S, Fetter RD, Bock DD (2018) A complete electron microscopy volume of the brain of adult *Drosophila melanogaster*. *Cell* 174:730–743.e722
- Zitnan D, Sehna F, Bryant PJ (1993) Neurons producing specific neuropeptides in the central nervous system of normal and pupariation-delayed *Drosophila*. *Dev Biol* 156:117–135
- Zitnan D, Kingan TG, Kramer SJ, Beckage NE (1995) Accumulation of neuropeptides in the cerebral neurosecretory system of *Manduca sexta* larvae parasitized by the braconid wasp *Cotesia congregata*. *J Comp Neurol* 356:83–100
- Zupanc GK (1996) Peptidergic transmission: from morphological correlates to functional implications. *Micron* 27:35–91