



Review

Antioxidant and Biological Properties of Mesenchymal Cells Used for Therapy in Retinitis Pigmentosa

Paolo Giuseppe Limoli ^{1,*}, Enzo Maria Vingolo ², Celeste Limoli ¹ and Marcella Nebbioso ³¹ Low Vision Research Centre of Milan, p. Sempione 3, 20145 Milan, Italy; celeste.limoli@libero.it² Department of Ophthalmology, A. Fiorini Hospital, Terracina, Polo Pontino, Sapienza University of Rome, p. le A. Moro 5, 00185 Rome, Italy; evingolo@libero.it³ Department of Sense Organs, Faculty of Medicine and Odontology, Sapienza University of Rome, p. le A. Moro 5, 00185 Rome, Italy; marcella.nebbioso@uniroma1.it

* Correspondence: paololimoli@libero.it

Received: 7 September 2020; Accepted: 9 October 2020; Published: 13 October 2020



Abstract: Both tissue repair and regeneration are a priority in regenerative medicine. Retinitis pigmentosa (RP), a complex retinal disease characterized by the progressive loss of impaired photoreceptors, is currently lacking effective therapies: this represents one of the greatest challenges in the field of ophthalmological research. Although this inherited retinal dystrophy is still an incurable genetic disease, the oxidative damage is an important pathogenetic element that may represent a viable target of therapy. In this review, we summarize the current neuroscientific evidence regarding the effectiveness of cell therapies in RP, especially those based on mesenchymal cells, and we focus on their therapeutic action: limitation of both oxidative stress and apoptotic processes triggered by the disease and promotion of cell survival. Cell therapy could therefore represent a feasible therapeutic option in RP.

Keywords: retinitis pigmentosa; MSC; cell therapy; oxidative stress

1. Introduction

Retinitis pigmentosa (RP) affects 1.5 million people around the world, representing the most widespread hereditary retinal dystrophy: globally, its prevalence is estimated at 1:4000.

The term ‘RP’ comprises a series of clinical conditions caused by a high number of genetic alterations that, either alone or in association, cause damage to the molecular processes necessary for the creation, conservation, use, or recovery of rhodopsin. The direct consequence is the progressive and total loss of rod cells [1–3].

The genetic etiology of RP underlies the damage and subsequent death of rod cells, while the central retina, which contains mainly cone cells, remains in relatively good condition until the advanced stage of the disease. This explains why RP patients are often diagnosed later on in life, after the second or third decade of life.

However, the clinical manifestations of RP are caused not only by rod cell loss but also by the cone cell injury, albeit in later phases.

The cone loss goes beyond genetics [4–6] and involves other biomolecular mechanisms, including alterations in hemodynamics [7], oxidative stress due to the higher availability of oxygen after rod loss [8,9], and the impaired response to oxidative stress [2,3,10–12].

This sequence of events underlies the prevailing symptoms of RP: night blindness, tunnel vision, followed by progressive loss of central vision and complete or near complete blindness.

Rod cells account for about 95% of all photoreceptors, and the oxidative metabolism of fatty acids is their main source of energy [13].

More than 80 causative genes of RP responsible for rod damage have already been identified, although a significant number of them are still unknown [14].

Genetic mutations responsible for RP in some cases also involve genes expressed not only in rods but also in the retinal pigment epithelium (RPE), such as MERTK [15], RLBP1 [16], and RPE65 [17].

RPE plays many vital roles for photoreceptor cells, and the most fascinating is certainly its protective action against oxidative stress [18].

Recent studies have confirmed a high level of reactive oxygen species (ROS) in RPE, and fatty acids are one of their molecular targets. If oxidized, they can compromise transduction pathways and gene expression [19].

At this point, a cascade of molecular phenomena—such as para-inflammation, synaptic impairment, apoptosis, and cell death—which hugely impact visual function, is triggered.

Therefore, oxidative damage is considered the leading cause of cone apoptosis and progressive vision loss [6,7,20,21].

However, this chain of events, which is triggered after the rod death and leads to the cone loss, highlights a number of key points that can potentially be leveraged therapeutically to slow down or stop the disease progression towards its terminal stages, modulating the rod damage and preventing or delaying cone death [22–24].

In order to stimulate neuronal survival, many research groups have worked on animal models of RP.

New therapeutic approaches for RP include the restoration of defective genes and stem cell transplantation to replace or repair impaired or dead cells [25,26].

2. Oxidative Stress and Retinitis Pigmentosa

2.1. Animal Models of RP

There are a complex variety of animal models that have allowed the molecular study of RP.

The refinement of these genetic models offers a deeper comprehension of biological and etiopathogenetic mechanisms of the disease. Based on these studies, it is also possible to develop new treatments and prevention strategies.

Examples of those models are Rd1 mice [27], Rd10 mice [28], P23H and S334ter Rhodopsin Transgenic Rats [29], Rd mice [30], Rds mice [31], Royal College of Surgeons rats [32], and RPE65 dog [33].

Rd1/rd1 mouse has a mutation at the level of β subunit of phosphodiesterase cGMP gene that leads to cGMP toxic accumulation, higher level of intracellular Ca^{2+} , and finally rod death [27,34–37]. The rod loss leads to a greater amount of oxygen available, that injures the cones, causing their death. In view of this, antioxidative therapy could prevent cone death in this RP murine model [34–37].

A similar mutation has been found in a particular type of autosomal recessive RP, and therefore Rd1/rd1 mouse has become an ideal RP model [34].

Rd10 mouse has allowed the study of ceramide in retinal degeneration. Ceramide is a proapoptotic sphingolipid and its level increases during the rod cell death.

It has been shown that the photoreceptor loss can be blocked by hindering the ceramide proapoptotic pathway.

Intraocular injection or continuous eye drops administration of myriocin, inhibitor of serin palmitoyl-CoA transferase, can return ceramide to normal levels and stop the apoptotic death of photoreceptors. Therefore, this therapeutic approach can be applied to humans [28].

P23H rat model has established that the photoreceptor loss triggers major changes in the number and morphology of glial cells affecting the inner retina.

Both astrocytes and Müller cells promote retinal cell survival by releasing neurotrophic factors, providing anti-oxidative support, catabolizing neurotransmitters in the extraneural space, and supporting synapse formation. They also contribute to activating microglial cells and regulating vasal tone [38]. In addition to the photoreceptor loss in P23H rat model, the alteration of retinal vascular plexuses has been observed. The reduced capillary density may hinder the oxygen and nutrient supply to the retinal cells and foster the retinal degeneration. Thus, vascular injuries should be considered as an important therapeutic target in degenerative retinal diseases [39].

In Rd [30], Rds [31], in Royal College of Surgeons rat [32], and in RPE65 dog [33], the identification of a single mutation has allowed to develop targeted gene therapy and to partially limit the retinal degeneration. However, there are only few types of RP with specific mutations, restricting the application of gene therapy.

The use of trophic factors [40–42], calcium channel blockers [43], or MSCs [44] have been observed to slow down the disease progression in some RP animal models.

2.2. Synoptic Aspects of Oxidation and Antioxidation

Photoreceptors are particularly sensitive to oxidative damage exerted by the light, with which they constantly interact [45–47]. In fact, to phototransduce electromagnetic radiation into visual stimuli, retinal cells contain numerous photosensitive molecules, a considerable amount of polyunsaturated fatty acids (15% of photoreceptor's mass) and are characterized by an extremely high metabolism, from which unstable metabolic byproducts, called ROS, are continuously generated. ROS are represented by several unstable molecules, including superoxide anion (O_2^-), ozone (O_3), hydrogen peroxide (H_2O_2), hydroxyl radical ($\bullet OH$) derived from the decomposition of peroxides, peroxide radical ($LOO\bullet$) which removes an atom of hydrogen from another lipid molecule, and nitric oxide ($NO\bullet$), a messenger in many cytosolic pathways.

Furthermore, under oxidative stress conditions, non-metabolizable advanced glycation end-products (AGEs), responsible for para-inflammation and permanent cell damage, are produced [48].

Over time, oxidative stress can alter transduction pathways and gene expression [49] and damage all the cellular components, including phospholipid membranes, proteins, and nuclear and mitochondrial DNA (mtDNA). Those injuries lead to the progressive loss of function of photoreceptor as well as RPE [50–52].

However, photoreceptors are able to protect themselves against these oxidative injuries through several mechanisms.

The first antioxidant defense is mediated by enzymes—such as catalase, glutathione peroxidase, and reductase—which promote the decomposition of hydrogen peroxide into water and oxygen molecules; superoxide dismutase (SOD), which is normally found in the mitochondria of cone's inner segments [53–55] or the glyoxalase system [56], which neutralizes ROS by acquiring electrons from oxidizing substances.

Another important defense is provided by the endoplasmic reticulum (ER) through the activation of a cellular stress response, called unfolded protein response (UPR). As a reaction to the accumulation of misfolded proteins in the ER lumen, UPR is initially set to restore normal cell function; if this process does not occur in the proper time and way, UPR activates apoptosis. The persistent activation of UPR has been implicated in the pathogenesis and progression of several diseases, such as RP [57,58].

Another protective mechanism against oxidative stress is the production of stress granules, proteins able to bind and protect specific mRNAs, preventing their degradation. Through the selective inhibition of such mRNAs, the transcription of constituent genes is selectively blocked while the translation of stress-induced transcripts is facilitated, allowing energy savings and cell survival [59].

Furthermore, retinal cells can resort to autophagy to catabolize damaged proteins and organelles, ensuring a homeostatic balance and promoting their survival following oxidative damage [11,60].

About 1–5% of ROS is generated in the mitochondria, organelles responsible for energy production in the cell. As a response to specific signals including oxidative stress, hunger, and mitochondrial protein modification, the selective autophagy of mitochondria can be activated [61].

Autophagy plays a protective role against oxidative stress and other cellular lesions, but the build-up of autophagosomes due to prolonged insults ends up becoming harmful to cells [62].

Finally, RPE cells have been shown to protect photoreceptors against ROS [63]. They are also known to provide many other vital functions for photoreceptors, such as light absorption, bi-directional epithelial transport, spatial ion buffering (in order to maintain the predisposition to depolarization), visual cycle regulation, phagocytosis of external photoreceptor segments (POS), secretion of trophic factors and signaling molecules, and support to the eye seen as an immunologically privileged site [64].

In conclusion, the balance between oxidative stress and antioxidant mechanisms is crucial for cell survival. If the cell is over-stressed or has an altered protection (e.g., due to pathologies), programmed death cell, i.e., apoptosis, is induced [65–69]. Therefore, it is necessary to preserve the homeostasis to avoid cell death by regulating the excess of ROS that the metabolism continuously produces.

It is especially true for RP in which the impairment of antioxidant responses has a key role in triggering the disease progression [12,47].

In fact, the photoreceptors—in particular the rods, responsible for scotopic vision, and the RPE—are the most vulnerable cell types to oxidative damage [3], especially because they are believed to reside in a terminal G0 phase.

2.3. Oxidative Stress and RP

The impairment of retinal vascularization, mainly mediated by oxidative stress, is considered to play a key role in the RP progression.

Many studies have shown a reduction both in choroidal [61,70] and macular [4,71] hemodynamics associated with a reduced visual sensitivity in RP patients.

The catabolic products released by photoreceptors not only lead progressively to rod loss but also have negative effects on microcirculation. In fact, the retinal vessels appear thin. It becomes a vicious circle in which the altered perfusion fosters photoreceptor injury and loss [72].

Several studies highlight the role of the impaired retinal circulation in RP and its correlation with residual function [73] and choroidal thickness [74]. In particular, the reduction in retinal blood flow both as a whole [20] and at the subfoveal level has been shown, with related alterations in electroretinographic recordings [75].

Several studies have shown that both endogenous ROS produced by retinal metabolism and the lipid peroxidation or DNA damage, produced by external agents, such as exposure to sunlight or cigarette smoke, can contribute to photoreceptor death.

The most pathognomonic aspect of RP is that the blood, passing through the choroid, maintains an arterial oxygen saturation until it enters the venous system. Moreover, unlike retinal capillaries, choroidal capillaries allow plasma protein diffusion in order to meet the metabolic photoreceptor needs [76].

The rods, which make up about 95% of all photoreceptors, are progressively lost in RP; consequently, the intracapillary oxygen level remains elevated, increasing ROS production and inducing an oxidative damage in the cones, surviving cells that are eventually impaired and lost [9,45].

The following factors have been shown to exacerbate the oxidative damage and the rod death: foveal area's exposure to light, choroidal stasis, metabolic deterioration of cones and RPE cells, lack of antioxidant enzymes such as SOD, which is normally found in the mitochondria of the cone inner segments (but not in the outer ones), glutathione peroxidase, glyoxalase and catalase, and autophagy impairment [8,10,11,77–79].

In recent years, it has been demonstrated that the oxidative damage can also interfere with particular RNA molecules called long non-coding RNAs [80,81]. These are involved in several critical biochemical pathways, such as chromosome conformation modeling, genomic imprinting

modulation, allosteric control of enzymatic activity, as well as cell state coordination, differentiation, and development. Dysregulation or mutation of non-coding genes has been associated with various human diseases, including RP [80,81].

The alteration of lipoproteins and DNA derived from hyperoxia can cause irreparable damage in the residual cells (mainly cones), and therefore in the foveal region [9,45,79,82–84].

In RP, the cell apoptosis induced by oxidative stress determines the so-called retinal gliosis, i.e., a state of para-inflammation in which microglial and macroglial cells are activated [85].

The microglial cells, which are normally dormant resident retinal macrophages, provide neuroprotection against ROS damage under physiological conditions.

Debris from apoptotic or dead cells, damaged lipopolysaccharides and ROS [21,86] can trigger the activation of apoptotic photoreceptors in RP, which generally occurs just before or at the peak of apoptotic photoreceptor death [87–89].

Their activation involves the expression of inflammatory regulatory proteins such as peroxiredoxin 2 (PRDX2), pro-inflammatory cytokines such as TNF- α , interleukin-1 β or interferon- γ in RPE cells [90,91], chemokines and neurotoxic agents, including hydrogen peroxide, and superoxide anion with additional oxidative stress [92,93].

The microglia chronic activation promotes the microglial phagocytosis against the altered components of neuronal cells, determining the evolution of RP [94].

Conversely, the suppression of their activation improves the survival of rods [95].

On the other hand, the macroglia represented by retinal Müller glia (RMG)—which form the columns of retinal tissue and have multiple connections with retinal neurons, microglia, astrocytes, and endothelial cells—modulate different responses depending on the severity of the stimulus. The activation of these macroglial cells leads to hypertrophy, which in turn induces the overexpression of vimentin (an intermediate filament) and glial fibrillary acidic protein (GFAP), which is considered a hallmark of retinal stress [96]. As an immediate response to non-permanent acute stimuli, the RMG promotes the secretion of trophic and antioxidant factors, but as it becomes chronic, their secretory role can be clearly deleterious to neuronal cells [96].

Therefore, the abovementioned state of hyperoxia and the ensuing ROS formation are fundamental underlying causes of accelerated rod loss and cone injury in the retina affected by RP.

3. Mesenchymal Cells: Therapeutic Strategies in Retinitis Pigmentosa

Over the past few years, different therapeutic approaches aiming to delay the rod death and to prevent the cone injury in RP have been explored. In particular, much emphasis has been placed on cell therapy and gene therapy. The latter one, however, has achieved limited results *in vivo* and it may not modify the retinal damage once it has occurred. Consequently, scientific interest is particularly focused on cell therapy, a promising tool of regenerative medicine [97].

Some researchers have used embryonic stem cells [98] or induced pluripotent stem cells [99] to generate neurons that could replace lost cells. Although these cells effectively express neuronal markers, most of them show a poor retinal integration, remaining close to the injection site.

Other researchers have used mesenchymal stem cells (MSC) by exploiting their primary ability to paracrinally modulate the neuronal microenvironment by secreting growth factors (GF) in different retinal degeneration models [100–105].

Cell therapy can contribute to maintain both the neuronal density and the function of the retina by improving and preserving intra- and extra-cellular conditions [106].

Compared to ESCs and iPSCs, MSCs have a lower differentiation potential, but numerous advantages: they do not induce risks of uncontrolled growth and rejection reactions, not requiring immunosuppressant use; they do not have ethical problems; they are relatively inexpensive and easy to collect (especially those derived from adipose tissue); finally, they have a higher immunomodulatory capacity, meeting the prerequisites of regenerative medicine [107–109].

MSCs are characterized by the group of cell surface markers, both positive and negative, proposed by the International Society for Cellular Therapy in 2006 [110]. The MSC population is defined as >95% positive for CD105, CD73, CD34, and CD90, and >95% negative for CD45, CD14 or CD11, CD79, CD19, and HLA-DR. MSCs also express other surface markers, such as CD44, CD166, Stro-1, CD106, and CD146 [111].

MSCs, spread ubiquitously throughout the body, play a key role in organogenesis, tissue remodeling, and repair [112].

They can migrate to injury sites, following the intravascular administration. This process is due to the distinctive molecules present on the surface of MSCs and endothelial cells, such as P-selectin and integrins [113]. For this reason, these cells have the ability to adhere to the endothelium and cross it by metalloprotease [114].

Among the different sources, the most interesting MSCs exploited for clinical therapeutic purposes in retinal diseases include:

- Adipose-derived stem cells (ADSCs)
- Adult adipocytes
- Platelets

Adipose tissue is one of the most interesting collection sites of MSC. Like bone marrow, adipose tissue contains a large population of stem cells, called ADSCs, within its stromal compartment. They can be obtained using simple procedures such as lipoaspiration performed under local anesthesia. ADSCs are more numerous, have a faster expansion, and a greater secretory and immunomodulatory capacity [109].

ADSCs produce basic fibroblast GF (bFGF) also known as FGF2, vascular endothelial GF (VEGF), macrophage colony-stimulating factor (M-CSF), granulocyte-macrophage colony-stimulating factor (GM-CSF), placental GF (PIGF), transforming GF beta (TGF- β), hepatocyte GF (HGF), insulin-like GF-1 (IGF-1), interleukin (IL), angiogenin, ciliary neurotrophic factor (CNTF), brain-derived neurotrophic factor (BDNF) [108,115], and glial cell-derived neurotrophic factor (GDNF) [116].

Adult adipocytes are another type of mesenchymal cell that can be used for regenerative purposes. These can secrete specific hormones, called adipokines, which play a role in energy homeostasis. Adipose cells produce epidermal GF (EGF), bFGF, IGF-1, IL, TGF β , pigment epithelium-derived factor (PEDF), and adiponectin [117–120].

Finally, also the platelets, originating from the subdivision of megakaryocytes, originate from mesenchymal tissue.

They are well known for their hemostatic action, but they can also release substances that promote tissue repair and angiogenesis, and modulate inflammation [121]. In addition, they induce cell migration and adhesion at angiogenesis sites, as well as differentiation of endothelial progenitors into mature endothelial cells [122].

Platelets produce platelet-derived GF (PDGF), IGF-1, TGF β , VEGF, bFGF, EGF, platelet-derived angiogenesis factor (PDAF), and thrombospondin (TSP), and several authors have used them in eye diseases such as glaucoma, age-related macular degeneration (AMD), and RP [123–126].

They are used in regenerative therapy in the state of platelet rich plasma (PRP), obtained from plasma centrifugation, because it allows to achieve a greater production of cytokines, even 4–5 times greater than the initial conditions.

Several cell grafting methods have been developed: intravitreal [104,127], subretinal [128], epiretinal, subtenon [126], and suprachoroidal [129–132] (Table 1). Each has its advantages and disadvantages.

Table 1. Main clinical studies exploiting MSC for therapeutic purposes in RP.

Disease	Cell Source	Delivery	WHO Identifier	References
AMD (GA), RP and ischaemic retinopathy	Autologous BMHSC	Intravitreal injection	NCT01560715 NCT01518127 NCT01518842	[103,104]
AMD (GA), RP, RVO and DR	Autologous BMHSC	Intravitreal injection	NCT01736059	[105]
RP	Autologous ADMSC	Subretinal application	Not registered	[128]
AMD (GA), RP, OA	Autologous ADMSC And PRP	Suprachoroidal application	Not registered	[131–134]
RP	Autologous PRP	Subtenon injection	Not registered	[126]
RP	Eterologous UC-MSCs	Suprachoroidal application	Ministry of Health 56733164/203	[129]

RP: Retinitis Pigmentosa; AMD: Age related Macular Disease, GA: Geographic Atrophy, OA: Optic Atrophy; DR: Diabetic retinopathy; RVO Retinal Venous Occlusion; BMHSC: Bone Marrow Human Stem Cell; ADMSC: Adipose Derived Mesenchymal Stem Cell; PRP: Platelet Rich Plasma; UC-MSC: Umbilical Cord Mesenchymal Stem Cell.

In particular, the suprachoroidal implantation of MSCs according to Limoli Retinal Restoration Technique uses three types of autologous mesenchymal cells: ADSCs, adipocytes, and platelets concentrated in PRP. With this method, improvements have been observed in electroretinographic parameters and visual performance in AMD, opticopathies, and RP. Furthermore, it seems to be devoid of the potential complications reported for the intravitreal and subretinal methods [128,131–134].

The ocular administration of MSC promotes a significant restoration of the visual system in a variety of eye diseases, including RP [100,135–138], through several mechanisms, as follows (Table 2):

1. Cell differentiation and trans-differentiation for lost/damaged cell replacement
2. Paracrine action for cell repair and functional stimulation
3. Exosomes and microvesicle secretion
4. Modulation of host immune responses in inflammation site

3.1. Transdifferentiation

Experimental studies have described the ability of MSCs to differentiate mainly into adipocytes, chondrocytes, osteoblasts, vascular endothelial cells, cardiomyocytes, pancreatic beta cells, and hepatocytes, as well as into retinal progenitor cells, photoreceptors, and retinal neuron-like cells [101,102].

In fact, it has been shown that, in presence of retinal cells, supernatant from retinal cell cultures, or retinal cell extracts, MSCs differentiate into those cells by expressing genes and markers typical of retinal cells [139].

3.2. Paracrine Effect

In addition to their multipotent differentiation capacity, MSCs can also secrete active ingredients—such as cytokines, chemokines, and GFs—that act paracrinally (Figure 1) [66,140–148].

The cytokines produced by mesenchymal cells, after binding with the specific receptor on the target cell, activate specific signaling pathways by phosphorylation processes. Consequently, the transcription factors enter the nucleus and, by interacting with nuclear DNA, regulate the cellular transition from G0 to G1, necessary to activate gene expression and protein synthesis. The end products play a key role in cell survival, including mitosis, migration, and cell differentiation [129–133,149].

The mesenchymal cell graft is the most effective method for therapeutic purposes because it produces a variety of bioactive molecules on an ongoing basis. In fact, although the secreted factors have a short half-life, the cell graft ensures their production continuously, maintaining a long-term therapeutic effect [150,151].

3.3. Extracellular Vesicles

Furthermore, growing evidence has been reported on the therapeutic potential of extracellular vesicles and exosomes, that MSCs can release in the extracellular environment [152,153].

Exosomes and microvesicles are very different from each other but have common characteristics in terms of size and content: both carry RNA, proteins, enzymes, and lipids, as well as mitochondria and ribosomes. Through these factors, they can regulate various biological functions, including the repair of damaged tissues [152,154].

Thus, these particles could be directly use for therapeutic purposes, without the need to graft MSCs [152].

Intravitreal injection of MSC-derived exosomes has been shown to exert a repair and protective action in murine models of laser-induced retinal damage [155]. The author has noted that transplanted exosomes inhibit infiltration of inflammation-mediated cytokines, including stromal cell-derived factor 1 (SDF1), monocyte chemotactic protein-1 (MCP-1), tumor necrosis factor (TNF- α), and intercellular adhesion molecule-1 (ICAM-1) and, generally, T-cell-mediated immune responses [155,156].

Table 2. Biological actions of MSC-based therapeutic applications [156].

MSC Effects	Mechanisms	Comments
Transdifferentiation	Ability to differentiate into the three germ layers cells.	Ectoderm: epithelial cell, neuron Mesoderm: chondrocyte, adipocyte, osteocyte, connective stromal cell Endoderm: muscle cell, gut epithelial cell, lung cell
Cell fusion	Ability to fuse with another cell forming a heterokaryon (i.e. multinuclear cell).	
Mitochondrial transfer	Ability to transfer mitochondria in damaged cells to increase activity of the respiratory chain complex and ATP levels.	MSC makes contact with the targeted cell and builds a gap junctional channel to transfer mitochondria.
Extracellular vesicles	Ability to release microvesicles and/or exosomes containing bioactive molecules, RNA, microRNA, lipids and proteins for intercellular communication.	The interaction of extracellular vesicles with the targeted cell leads to fusion, release and transfer of the vesicles' components.
Paracrine effect	Ability to secrete bioactive cytokines and chemokines that act on immunomodulation, angiogenesis/arteriogenesis, antiapoptosis, antioxidation and cell migration/stimulation.	Examples: IL-6; HGF; IDO; HO-1; TGF; NO; HLA-G5; PGE2; VEGF; FGF; IGF; MCP1; SDF1; PIGF; IL-6; Bcl-2; Akt; STC1; GM-CSF; TNF; GDNF; SCF; LIF; CCL; CXCL.

MSC, mesenchymal stem cells; IL-6, interleukin-6; HGF, hepatocyte growth factor; IDO, indoleamine 2,3-dioxygenase; HO-1, heme oxygenase 1; TGF, transforming growth factor; NO, nitric oxide; HLA-G5, human leukocyte antigen class I molecule G5; PGE2, prostaglandin E2; VEGF, vascular endothelial growth factor; FGF, fibroblast growth factor; IGF, insulin-like growth factor; MCP1, monocyte chemotactic protein 1; SDF1, stromal cell-derived factor 1; PIGF, placental growth factor; IL-6, interleukin 6; Bcl-2, B-cell lymphoma 2; Akt, v-akt murine thymoma viral oncogene homolog 1; STC1, stanniocalcin 1; GM-CSF, granulocyte-macrophage colony-stimulating factor; TNF, tumor necrosis factor; GDNF, glial-derived neurotrophic factor; SCF, stem cell factor; LIF, leukemia inhibitory factor; CCL, chemokine C-C motif ligand; CXCL, chemokine C-X-C motif ligand.

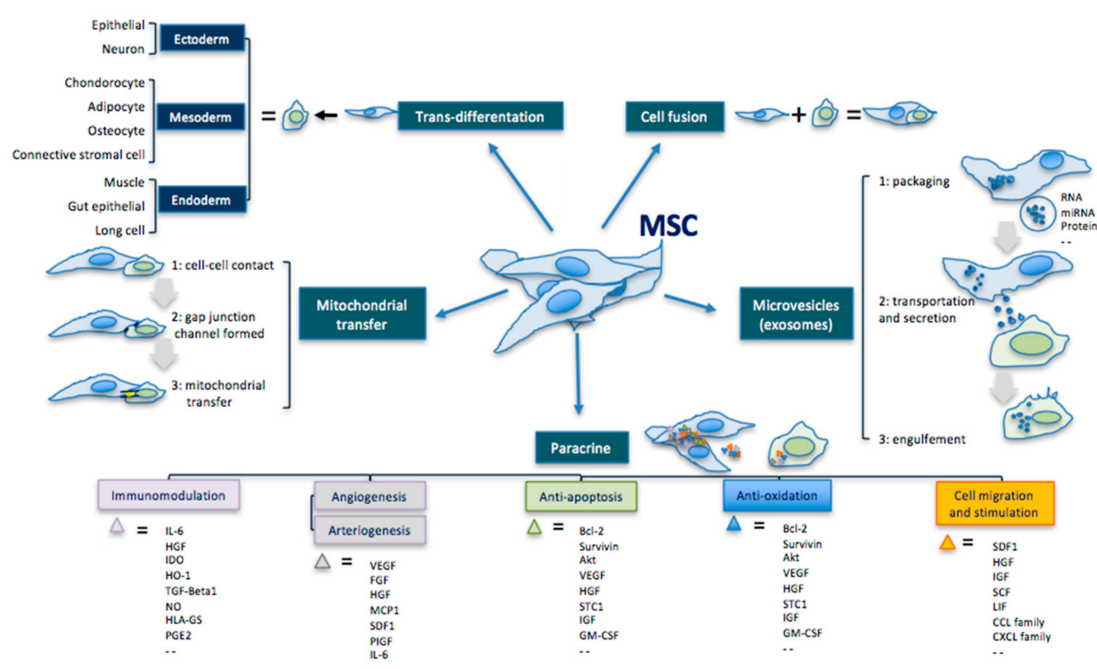


Figure 1. Principal therapeutic mechanisms of MSCs, modified by Liang [156].

4. Cell-Mediated Biomolecular and Antioxidative Mechanisms in RP

The therapeutic effect of MSCs is mainly based on the paracrine secretion of cytokines, GFs, extracellular vesicles and exosomes. In recent years, the scientific literature has highlighted the several mechanisms through which the cell therapy can slow down the RP progression. The therapeutic mechanisms are summarized below:

1. Hemorheological activity
2. Antioxidant activity
3. Anti-inflammatory activity
4. Anti-apoptotic activity
5. Cytoprotective activity

It is important to note that the boundaries between these mechanisms cannot be clearly distinguished.

4.1. Hemorheological Activity

MSCs can help to regulate retinal microhemodynamics through their paracrine secretome.

In a study conducted on a murine model of diabetic retinopathy, the administration of bone marrow-derived MSCs has been followed by their integration into the retinal structure and their subsequent differentiation into RMG, likely by contact mechanism. Consequently, they may exert selective protection against retinal gliosis and restore vascular integrity and function [85].

In another study conducted on a murine model of diabetes, intravitreal administration of adipose tissue-derived MSCs was not followed by any signs of diabetic angiopathy, such as neovascularization, ischemia, loss of RGC, or increased pro-angiogenic factors, compared to untreated cases [157].

The implanted MSCs secrete a wide range of GFs and cytokines, as well as other proteolytic and angiogenic proteins, including VEGF, bFGF, angiogenin, PDAF, PIGF, PDGF, EGF, TGF- β 1, SDF-1, cathepsins, MMP (or matrix metalloproteinases), and PAI-1 (plasminogen activator inhibitor 1) in response to tissue repair [137,158].

In this way, they can promote endothelial regeneration and can thus contribute to boosting microhemodynamics. Through the release of anti-angiogenic factors, such as TSP-1 and PEDF, they can exert an inhibitory action on pathological neovascularization [157,159–161].

In 2013, Chu et al. also observed similar suppression in VEGF activity, which was attributed to indirect inhibition of TSP-1 on VEGF receptor through the binding to CD36 and subsequent recruitment of SHP-1 (Src Homology 2 domain-containing Protein tyrosine phosphatase 1), a negative regulator of cell activation and proliferation [162].

Platelets can also release factors—such as PDGF, bFGF, EGF, VEGF, IGF-1, TGF- β , PDAF, and TSP—that promote tissue repair and regeneration and angiogenesis. In addition, they can modulate inflammation and apoptosis, stimulate cell migration and adhesion at angiogenesis sites, and improve the differentiation process of endothelial progenitor cells into mature cells [121].

The platelets can be administered as PRP, promoting new capillary plexus development and facilitating nutrient supply to the grafted cells [163].

Subretinal injection of PRP in a neonatal mouse model has been shown to promote the formation of denser vascular networks [164].

Even ADSCs grafted at an early stage in the subretinal space can prevent the progression of diabetic retinopathy [165].

4.2. Antioxidant Activity

As seen above, the oxidative stress has been shown to play a significant role in the pathogenesis of PR and disease progression. Based on the causative gene of RP, antioxidant treatments could preserve the cone function and prolong the rod survival [8,79].

Among the various treatments that can limit oxidative damage, MSCs seem to play an interesting therapeutic role [94,100,159,160,166,167]. The MSC secretome is very wide and different according to the specific experimental context, probably due to the varying ROS inductors. There is evidence that MSC therapy can have a broad influence on the redox context due to these antioxidant factors [168] and it can positively influence the evolution of RP (Figure 2) [131,132].

Indeed, the concentration of bFGF, one of the most effective molecules in promoting photoreceptor survival in a dose-dependent manner, increases within the external retina in response to oxidative stress [169].

The bFGF is physiologically produced by the RMG stimulated by the glial cell-derived neurotrophic factor (GDNF), which is responsible, inter alia, for the nuclear transcription of bFGF.

MSCs can secrete GDNF. The bFGF, together with other factors such as VEGF act by promoting ischemic containment, metabolic recovery, and neuroprotection [170].

MSCs can directly produce bFGF and modulate the anti-oxidative activity, bypassing the non-functioning RMG in RP.

ADSCs release other neurotrophic factors, such as NGF, bFGF, and GDNF, in order to preserve retinal cell survival and reduce oxidative stress damage in the retina [157].

Moreover, in a mouse model of diabetic retinopathy, after MSC transplantation, it has been shown that some of these cells have been integrated into the retinal structure by differentiating into retinal astrocytes, RGC, pericytes, and RMG, exerting selective protection against retinal gliosis [85].

It has been reported that the ciliary neurotrophic factor (CNTF) and brain-derived neurotrophic factor (BDNF) secreted by MSCs can have a neurotrophic action in RGC culture, after inducing an oxidative state [100].

The containment of oxidative stress delays the rod death as well as indirectly influences the cone vitality, since the paracrine secretion of rod cone viability factor (RdCVF) by rods is crucial for cone survival [5,171]. It has been found that, through an antioxidant effect, RdCVF prevents cone death in transgenic rat models rd10 and P23H [78,172].

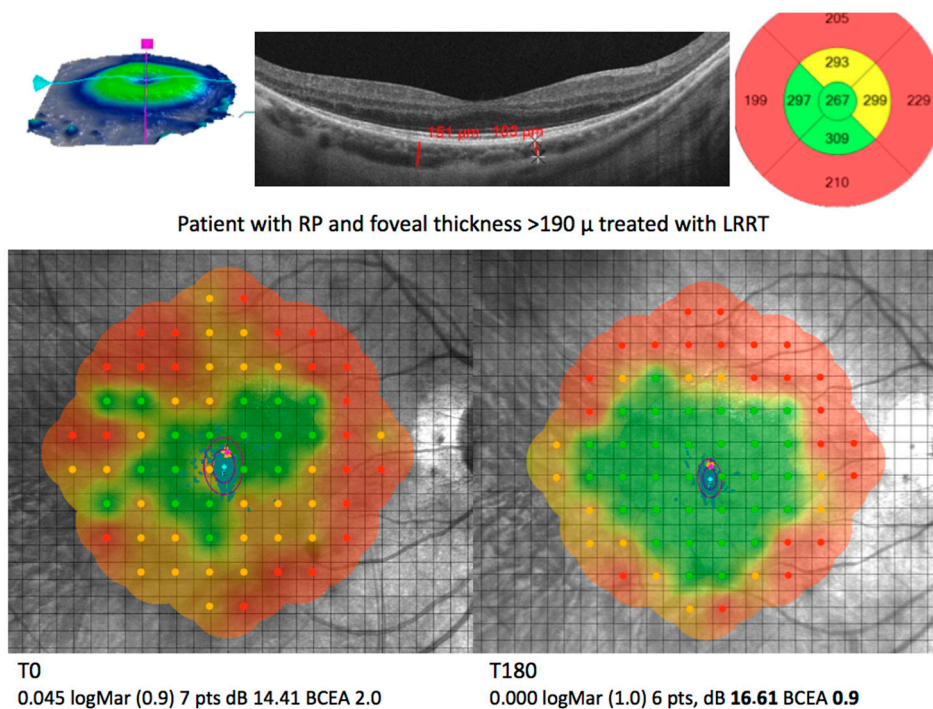


Figure 2. Image showing the effect of the suprachoroidal implantation of autologous mesenchymal cells in a patient with retinitis pigmentosa. The OCT shows the foveal area thickness; the thicker it is, the greater the interactions between growth factors and residual cells. It can explain the increase in visual performance (BCVA, dB, pts) at T180. Image courtesy of P. Limoli—Low Vision research Centre of Milan.

4.3. Anti-inflammatory Activity

The RMG and RPE produce a set of anti-inflammatory factors such as IL-10, IL-11, and TGF- β to counter the proinflammatory state in the retina affected by RP induced by oxidative stress.

These factors are essential for homeostasis and retinal function. However, their action becomes highly insufficient as RP progresses.

Several studies have suggested that MSCs can express many factors with anti-inflammatory, immunomodulatory and chemotactic action through the crosstalk between MSCs and the microenvironment of the damaged area [173–176].

It follows that the extent of inflammation and damage can also be modulated therapeutically by creating a balance between the production of pro- and anti-inflammatory molecules.

The intravitreal administration of MSCs can have a significant impact on the immune response of the host through secretion of CNTF and BDNF, neurotrophic factors that can promote the downregulation of pro-inflammatory cytokines such as TNF- α , interferon- γ , and interleukin-1 β (IL-1 β) [118,165,177].

In addition, they have been proven to exert a protective action against retinal cells through the paracrine release of anti-inflammatory GFs such as IL-6, PDGF, NGF, interferon beta (IFN- β) [178], and activation of the prostaglandin E2 receptor (PGE2R) [143].

Cytokines—such as bFGF, M-CSF, GM-CSF, and IL—which are normally released by the MSCs, have an anti-inflammatory function, and recruit macrophages by chemotaxis that help to eliminate intraretinal cell debris [179–181].

The TGF- β 1, released by MSCs, contributes to promote the cone survival by an immunomodulatory strategy focused on microglia attenuation [182–184].

A study conducted by Guadagni et al. [24] has assessed that an integrated microenvironment with GFs can slow down the genetically determined death of photoreceptors while reducing retinal inflammation, and thus can create better conditions for the viability of the overall cell population.

4.4. Antiapoptotic Activity

The increased production of ROS in RP damages phospholipid membranes and cellular DNA, leading to apoptosis and photoreceptor death [77,185].

It has been observed that the administration of mesenchymal cells can hinder apoptosis involved in retinal degeneration.

Apoptosis, or programmed cell death, is a process activated by stimuli of different nature (toxic substances, drugs, oxidative stress, ionizing radiations that cause DNA damage, severe stress on the endoplasmic reticulum or mitochondria, as in ischemic conditions) that leads to cellular self-digestion. In particular, the apoptotic cell undergoes a progressive reduction in volume, a fragmentation of its nuclear DNA, and loses contact with adjacent cells. Subsequently, the cell disintegrates into cellular fragments, which, through the activation of phagocytosis mechanisms, are self-digested, completing the apoptotic process.

In the developing nervous system, the presence of GFs—such as NGF, BDNF, and NT-3 and NT-4—is necessary for the survival of neurons. Their lack at the level of certain neuronal population induces their apoptosis. It means that these GFs perform an anti-apoptotic action.

It is also noteworthy that the apoptosis allows to eliminate the excess cells that have not established the right connections during embryonic development [184].

The MSCs can secrete neurotrophic factors that act paracrinally and inhibit the apoptotic process in RP [186]. In fact, they produce proteins—such as Bcl-2, surviving, and Akt—which have apoptosis-inhibiting characteristics [187].

B-cell lymphoma 2 (Bcl-2) is a protein encoded in humans by the Bcl-2 gene, progenitor of the family of Bcl-2 regulatory proteins that regulate apoptosis, through the expression of caspases (by cysteine aspartase), a family of essential enzymes that implement the programmed cell death.

Bcl-2 has an anti-apoptotic action. The association with the protein Bax transforms Bcl-2 into proapoptotic Bcl-2 (Bax).

The relationship between Bcl-2 and its Bax form determines the sensitivity of cells to a pathological stimulus [188]. The prevalence of Bcl-2 expression over Bcl-2 (Bax) prevents the release of caspase activators; therefore, cells are less likely to respond to apoptotic signaling and vice versa [189].

Survivin is a member of the inhibitor of apoptosis protein (IAP) family, which groups together apoptosis-inhibiting proteins. It can inhibit caspase activation, thus resulting in a negative regulation of apoptosis.

Akt also called protein-kinase B or Pkb is a cytosolic protein that plays a key role in the PI3K/Akt pathway. Its effective result is the activation of biochemical pathways that lead to cell growth and resistance to apoptosis.

Tang et al. have detected the downregulation of Bax expression in the ischemic myocardium after autologous MSC transplantation [190].

MSCs can release VEGF, that prevents apoptosis by overregulating the expression of Bcl-2 in the vascular endothelial cells [191].

VEGF also exerts an antiapoptotic action by phosphorylation of FAK (focal adhesion kinase), a critical signal for cell survival that suppress p53-mediated apoptosis, a protein that physiologically participates in eliminating cells with DNA damage [192–194].

Through the paracrine release of exosomes and microvesicles, MSCs can transfer different molecular types or organelles for antiapoptotic purposes.

These transfers are particularly evident when potential target cells are damaged or under stress. For example, MSCs have recently been shown to prevent apoptosis in endothelial cells by transferring mitochondria during ischemic stress [195].

Furthermore, it is known that RPE cells [196–198], and the RMG [40,199,200] release GFs in the retinal cytosol that have an anti-apoptotic action; the progressive loss of these cells in RP hinders this protective mechanism. However, the implanted MSCs can alternatively release these factors and stimulate survival not only of photoreceptors and ganglion cells [100], but also of RMG and RPE cells.

4.5. Cytoprotective Activity

GFs produced by MSCs have been shown to contribute to neuroprotection by regulating photoreceptor metabolic activity, which is physiologically intense but largely compromised in RP [145,201].

In rat models with hereditary retinal dystrophy, it has been reported that MSCs can improve visual function: the paracrine release of trophic cytokines by MSCs can promote the clearance of dysmetabolic photoreceptor products by RPE phagocytes [202].

In addition, their cytoprotective action is expressed through the release of numerous different neurotrophic factors.

Platelet-derived growth factor (PDGF) is one important factor secreted by mesenchymal cells with neuroprotective action; it is a regulator of cell growth and division. In particular, PDGF plays a significant role in blood vessel formation, mitosis, and chemotaxis, inducing photoreceptor survival.

The neuroprotective effects of PDGF are comparable to those of the brain-derived neurotrophic factor (BDNF) [203,204].

This result is based on the ability of PDGF and other molecules produced by MSC to activate the PI3K/Akt/mTOR pathway, and thus to upregulate mTOR signaling; the latter one appears to be decreased in several eye diseases [205].

It has also been discovered that MSC transplantation can reduce the damage to the outer segment layer of photoreceptors by promoting both cell regeneration through the paracrine release of hypoxia-inducible factor-1 (HIF-1) and axonal regeneration through growth-associated protein-43 (GAP-43) [206].

Data from a similar study has assessed that neurotrophic factors—such as NGF, bFGF, and GDNF, released by ADSCs—are involved both in maintaining retinal ganglion cell survival, and in reducing stress-related oxidative retinal damage [40].

Another factor produced by MSCs is EGF, which exerts a neuroprotective action on RMG, stimulating their intracellular transcription and bFGF expression [170,207].

The IGF factor, released by MSCs, promotes the synthesis of DNA and RNA as well as the increase of both cellular number and size. IGF can also regulate neuronal growth and development through a variety of processes, such as neurogenesis, myelination, synaptogenesis, dendritic branching, and neuroprotection following neuronal damage. IGF not only facilitates neuronal connections but also inhibits neuronal death [208,209].

In a murine model of hypertonic ischemia followed by retinal reperfusion, Li and colleagues (2009) injected BM-MSC into the vitreous body: 4 weeks later, the treated eyes had an increased number of RGC compared to the untreated eyes. The treated retinas also showed increased expression of bFGF, BDNF, and CTNF [210].

It has been observed that if the binding of neurotrophic factors, in particular NGF, BDNF, and neurotrophin-3, to the Trk receptor in its three variants—A, B or C—is prevented, the neuroprotective effect exerted by cell therapy is reduced [211]. In fact, the Trk pathway has an important role in neuron survival and cyto-functional regulation [211].

Finally, the release of exosomes and microvesicles by MSCs represent another cytoprotective mechanism. As aforementioned, these vesicles contain proteins, mRNA, microRNA, lipids, and organelles—such as ribosomes and mitochondria—and allow this load's transport from one cell to another. Specifically, the transfer of mitochondria to host cells promote the increase of intracellular AMPc, and therefore the energy level [175]. Islam et al. have recently demonstrated the *in vivo* evidence of this transfer by MSCs [212].

Proteins present in the extracellular BM-MSC vesicles also include signaling molecules such as mitogen-activated protein kinase (MAPK1), an enzyme expressed by the MAPK1 gene, cell adhesion mediators such as fibronectin, and surface receptors such as the PDGF receptor. MSC-derived extracellular vesicles also express regulatory molecules such as transforming GF beta (TGF- β), galectin-1, and programmed death-ligand1 (PD-L1), mediators involved in the processes of differentiation, proliferation, and cell apoptosis [213,214].

5. Conclusions

In view of the highlighted influence of MSC secretome on oxidative stress, the MSC graft in retina or adjacent tissues may slow down RP progression [100,101,104,126,128,131,132]: the bioactive factors released by MSCs could exert a trophic effect on photoreceptors, RMG, and RPE cells, so that the rod and cone lifespan could be prolonged.

Author Contributions: P.G.L. conceived of the presented idea; E.M.V., M.N. and C.L. contributed to the design and implementation of the research and to the writing of the manuscript. All authors have read and agreed to the published version of the manuscript.

Funding: This research received no external funding.

Conflicts of Interest: The authors declare no conflict of interest.

Abbreviations

ADSCs	Adipose Derived Stem Cells
AMD	Age Macular Disease
ASCs	Adipose Stromal Cells
BCEA	Bivariate Contour Ellipse Area
BCVA	Best Corrected Visual Acuity
BDNF	Brain-Derived Neurotrophic Factor
bFGF	Basic Fibroblast Growth Factor
BM-MSCs	Bone Marrow Mesenchymal Stem Cells
CASPases	Cysteine Aspartate-Specific Proteinases
cERG	Cone ERG or Photopic ERG
CNS	Central Nervous System
CNTF	Ciliary Neurotrophic Factor
EGF	Epidermal Growth Factor
ER	endoplasmic reticulum
ERG	Electroretinogram
ESCs	Embryonic Stem Cells
GAP-43	Growth-Associated Protein-43
GDNF	Glial Derived Neurotrophic Factor
GF	Growth Factor
GM-CSF	Granulocyte-Macrophage Colony-Stimulating Factor
HGF	Hepatocyte Growth Factor
HIF-1 α	Hypoxia-Inducible Factor-1 α
IAP	Inhibitor of Apoptosis Protein
IFN- β	Interferon- β
IGF-1	Insulin-like Growth Factor-1
IL-1RA	IL-1 Receptor Antagonist
IL	Interleukin
IRD	Inherited Retinal Disease
M-CSF	Macrophage Colony-Stimulating Factor
MAPK1	Mitogen-Activated Protein Kinase

MCP-1	Monocyte Chemoattractant Protein-1
MSCs	Mesenchymal Stem Cells
PDGF	Platelet-Derived Growth Factor
PDAF	Platelet-Derived Angiogenesis Factor
PEDF	Pigment-Epithelium-Derived Factor
PGE2R	Prostaglandin E2 Receptor
PI3-K	Phosphatidylinositol-3-Kinase
PIGF	Placental Growth Factor
POS	Photoreceptor Segments
PRP	Platelet-Rich Plasma
PRDX2	Peroxiredoxin 2
RdCVF	Rod Cone Viability Factor
RGC	Retinal Ganglion Cell
RMG	Retinal Müller Glia
ROS	Reactive Oxygen Species
RP	Retinitis Pigmentosa
RPE	Retinal Pigment Epithelium
SOD	Superoxide Dismutase
SVF	Stromal Vascular Fraction
TGF-	Transforming Growth Factor-
TNF-alpha	Tumoral Necrosis Factor—alpha
TSP	Thrombospondin
UPR	Unfolded Protein Response
VEGF	Vascular Endothelial Growth Factor

References

1. Pagon, R.A. Retinitis pigmentosa. *Surv. Ophthalmol.* **1988**, *33*, 137–177. [[CrossRef](#)]
2. Hartong, D.T.; Berson, E.L.; Dryja, T.P. Retinitis pigmentosa. *Lancet* **2006**, *368*, 1795–1809. [[CrossRef](#)]
3. Hamel, C.P. Retinitis pigmentosa. *Orphanet J. Rare Dis.* **2006**, *1*, 40. [[CrossRef](#)] [[PubMed](#)]
4. Murakami, Y.; Ikeda, Y.; Nakatake, S.; Miller, J.W.; Vavvas, D.G.; Sonoda, K.H.; Ishibashi, T. Necrotic cone photoreceptor cell death in retinitis pigmentosa. *Cell Death Dis.* **2015**, *6*, e2038. [[CrossRef](#)]
5. Ait-Ali, N.; Fridlich, R.; Millet-Puel, G.; Clérin, E.; Delalande, F.; Jaillard, C.; Blond, F.; Perrocheau, L.; Reichman, S.; Byrne, L.C.; et al. Rod-Derived Cone Viability Factor Promotes Cone Survival by Stimulating Aerobic Glycolysis. *Cell* **2015**, *161*, 817–832. [[CrossRef](#)]
6. Campochiaro, P.A.; Mir, T.A. The mechanism of cone cell death in Retinitis Pigmentosa. *Prog. Retin. Eye Res.* **2018**, *62*, 24–37. [[CrossRef](#)]
7. Yang, Y.J.; Peng, J.; Ying, D.; Peng, Q. A Brief Review on the Pathological Role of Decreased Blood Flow Affected in Retinitis Pigmentosa. *J. Ophthalmol.* **2018**, *2018*, 1–7. [[CrossRef](#)]
8. Shen, J.; Yang, X.; Dong, A.; Petters, R.M.; Peng, Y.-W.; Wong, F.; Campochiaro, P.A. Oxidative damage is a potential cause of cone cell death in retinitis pigmentosa. *J. Cell. Physiol.* **2005**, *203*, 457–464. [[CrossRef](#)]
9. Campochiaro, P.A.; Strauss, R.W.; Lu, L.; Hafiz, G.; Wolfson, Y.; Shah, S.M.; Sophie, R.; Mir, T.A.; Scholl, H.P. Is There Excess Oxidative Stress and Damage in Eyes of Patients with Retinitis Pigmentosa? *Antioxid. Redox Signal.* **2015**, *23*, 643–648. [[CrossRef](#)]
10. Punzo, C.; Xiong, W.; Cepko, C.L. Loss of Daylight Vision in Retinal Degeneration: Are Oxidative Stress and Metabolic Dysregulation to Blame? *J. Biol. Chem.* **2014**, *R111*, 304428. [[CrossRef](#)]
11. Moreno, M.-L.; Mérida, S.; Bosch-Morell, F.; Miranda, M.; Villar, V.M. Autophagy Dysfunction and Oxidative Stress, Two Related Mechanisms Implicated in Retinitis Pigmentosa. *Front. Physiol.* **2018**, *9*, 1008. [[CrossRef](#)] [[PubMed](#)]
12. Donato, L.; Scimone, C.; Nicocia, G.; D’Angelo, R.; Sidoti, A. Retracted Article: Role of oxidative stress in Retinitis pigmentosa: New involved pathways by an RNA-Seq analysis. *Cell Cycle* **2018**, *18*, 84–104. [[CrossRef](#)]

13. Agbaga, M.-P.; Merriman, D.K.; Brush, R.S.; Lydic, T.A.; Conley, S.M.; Naash, M.I.; Jackson, S.; Woods, A.S.; Reid, G.E.; Busik, J.V.; et al. Differential composition of DHA and very-long-chain PUFAs in rod and cone photoreceptors. *J. Lipid Res.* **2018**, *59*, 1586–1596. [[CrossRef](#)] [[PubMed](#)]
14. Birtel, J.; Gliem, M.; Oishi, A.; Müller, P.; Herrmann, P.; Holz, F.G.; Mangold, E.; Knapp, M.; Bolz, H.J.; Issa, P.C. Genetic testing in patients with retinitis pigmentosa: Features of unsolved cases. *Clin. Exp. Ophthalmol.* **2019**, *47*, 779–786. [[CrossRef](#)] [[PubMed](#)]
15. Audo, I.; Mohand-Saïd, S.; Boulanger-Scemama, E.; Zanlonghi, X.; Condroyer, C.; Demontant, V.; Boyard, F.; Antonio, A.; Méjécase, C.; El Shamieh, S.; et al. MERTK mutation update in inherited retinal diseases. *Hum. Mutat.* **2018**, *39*, 887–913. [[CrossRef](#)] [[PubMed](#)]
16. Scimone, C.; Donato, L.; Esposito, T.; Rinaldi, C.; D'Angelo, R.; Sidoti, A. A novel RLBP1 gene geographical area-related mutation present in a young patient with retinitis punctata albescens. *Hum. Genom.* **2017**, *11*, 1–6. [[CrossRef](#)] [[PubMed](#)]
17. Utz, V.M.; Coussa, R.G.; Antaki, F.; Traboulsi, E.I. Gene therapy for RPE65-related retinal disease. *Ophthalmic Genet.* **2018**, *39*, 671–677. [[CrossRef](#)]
18. Hicks, D.; Hamel, C.P. The Retinal Pigment Epithelium in Health and Disease. *Curr. Mol. Med.* **2010**, *10*, 802–823. [[CrossRef](#)]
19. Nowak, J.Z. Oxidative stress, polyunsaturated fatty acids-derived oxidation products and bisretinoids as potential inducers of CNS diseases: Focus on age-related macular degeneration. *Pharmacol. Rep.* **2013**, *65*, 288–304. [[CrossRef](#)]
20. Beutelspacher, S.C.; Serbecic, N.; Barash, H.; Burgansky-Eliash, Z.; Grinvald, A.; Krastel, H.; Jonas, J.B. Retinal blood flow velocity measured by retinal function imaging in retinitis pigmentosa. *Graefes Arch. Clin. Exp. Ophthalmol.* **2011**, *249*, 1855–1858. [[CrossRef](#)]
21. Langmann, T. Microglia activation in retinal degeneration. *J. Leukoc. Biol.* **2007**, *81*, 1345–1351. [[CrossRef](#)]
22. Otani, A.; Dorrell, M.I.; Kinder, K.; Moreno, S.K.; Nusinowitz, S.; Banin, E.; Heckenlively, J.; Friedlander, M. Rescue of retinal degeneration by intravitreally injected adult bone marrow-derived lineage-negative hematopoietic stem cells. *J. Clin. Investig.* **2004**, *114*, 765–774. [[CrossRef](#)] [[PubMed](#)]
23. Liang, F.-Q.; Aleman, T.S.; Dejneka, N.S.; Dudus, L.; Fisher, K.J.; Maguire, A.M.; Jacobson, S.G.; Bennett, J. Long-Term Protection of Retinal Structure but Not Function Using RAAV.CNTF in Animal Models of Retinitis Pigmentosa. *Mol. Ther.* **2001**, *4*, 461–472. [[CrossRef](#)] [[PubMed](#)]
24. Guadagni, V.; Novelli, E.; Strettoi, E. Environmental enrichment reduces photoreceptor degeneration and retinal inflammation in a mouse model of retinitis pigmentosa. *Investig. Ophthalmol. Vis. Sci.* **2015**, *56*, 4261.
25. He, Y.; Zhang, Y.; Liu, X.; Ghazaryan, E.; Li, Y.; Xie, J.; Su, G. Recent Advances of Stem Cell Therapy for Retinitis Pigmentosa. *Int. J. Mol. Sci.* **2014**, *15*, 14456–14474. [[CrossRef](#)] [[PubMed](#)]
26. Tucker, B.A.; Mullins, R.F.; Stone, E.M. Stem cells for investigation and treatment of inherited retinal disease. *Hum. Mol. Genet.* **2014**, *23*, R9–R16. [[CrossRef](#)]
27. Xue, C.; Rosen, R.B.; Jordan, A.; Hu, D.-N. Management of Ocular Diseases Using Lutein and Zeaxanthin: What Have We Learned from Experimental Animal Studies? *J. Ophthalmol.* **2015**, *2015*, 1–11. [[CrossRef](#)]
28. Strettoi, E.; Gargini, C.; Novelli, E.; Sala, G.; Piano, I.; Gasco, P.; Ghidoni, R. Inhibition of ceramide biosynthesis preserves photoreceptor structure and function in a mouse model of retinitis pigmentosa. *Proc. Natl. Acad. Sci. USA* **2010**, *107*, 18706–18711. [[CrossRef](#)]
29. Lavail, M.M.; Nishikawa, S.; Steinberg, R.H.; Naash, M.I.; Duncan, J.L.; Trautmann, N.; Matthes, M.T.; Yasumura, D.; Lau-Villacorta, C.; Chen, J.; et al. Phenotypic characterization of P23H and S334ter rhodopsin transgenic rat models of inherited retinal degeneration. *Exp. Eye Res.* **2018**, *167*, 56–90. [[CrossRef](#)]
30. Takahashi, M.; Miyoshi, H.; Verma, I.M.; Gage, F.H. Rescue from Photoreceptor Degeneration in the Mouse by Human Immunodeficiency Virus Vector-Mediated Gene Transfer. *J. Virol.* **1999**, *73*, 7812–7816. [[CrossRef](#)]
31. Ali, R.R.; Sarra, G.-M.; Stephens, C.; De Alwis, M.; Bainbridge, J.W.; Munro, P.M.; Fauser, S.; Reichel, M.B.; Kinnon, C.; Hunt, D.M.; et al. Restoration of photoreceptor ultrastructure and function in retinal degeneration slow mice by gene therapy. *Nat. Genet.* **2000**, *25*, 306–310. [[CrossRef](#)] [[PubMed](#)]
32. Vollrath, D.; Feng, W.; Duncan, J.L.; Yasumura, D.; D'Cruz, P.M.; Chappelow, A.; Matthes, M.T.; Kay, M.A.; Lavail, M.M. Correction of the retinal dystrophy phenotype of the RCS rat by viral gene transfer of Mertk. *Proc. Natl. Acad. Sci. USA* **2001**, *98*, 12584–12589. [[CrossRef](#)] [[PubMed](#)]

33. Acland, G.M.; Aguirre, G.D.; Ray, J.; Zhang, Q.; Aleman, T.S.; Cideciyan, A.V.; Pearce-Kelling, S.E.; Anand, V.; Zeng, Y.; Maguire, A.M.; et al. Gene therapy restores vision in a canine model of childhood blindness. *Nat. Genet.* **2001**, *28*, 92–95. [[CrossRef](#)] [[PubMed](#)]
34. Miranda, M.; Arnal, E.; Ahuja, S.; Alvarez-Nölting, R.; López-Pedrajas, R.; Ekström, P.; Bosch-Morell, F.; Van Veen, T.; Romero, F.J. Antioxidants rescue photoreceptors in rd1 mice: Relationship with thiol metabolism. *Free. Radic. Biol. Med.* **2010**, *48*, 216–222. [[CrossRef](#)] [[PubMed](#)]
35. Komeima, K.; Rogers, B.S.; Lu, L.; Campochiaro, P.A. Antioxidants reduce cone cell death in a model of retinitis pigmentosa. *Proc. Natl. Acad. Sci. USA* **2006**, *103*, 11300–11305. [[CrossRef](#)] [[PubMed](#)]
36. Komeima, K.; Usui, S.; Shen, J.; Rogers, B.S.; Campochiaro, P.A. Blockade of neuronal nitric oxide synthase reduces cone cell death in a model of retinitis pigmentosa. *Free Radic. Biol. Med.* **2008**, *45*, 905–912. [[CrossRef](#)]
37. Sanz, M.; Johnson, L.; Ahuja, S.P.; Ekström, P.; Romero, J.; Van Veen, T. Significant photoreceptor rescue by treatment with a combination of antioxidants in an animal model for retinal degeneration. *Neuroscience* **2007**, *145*, 1120–1129. [[CrossRef](#)]
38. Fernández-Sánchez, L.; Lax, P.; Campello, L.; Pinilla, I.; Cuenca, N. Astrocytes and Müller Cell Alterations during Retinal Degeneration in a Transgenic Rat Model of Retinitis Pigmentosa. *Front. Cell. Neurosci.* **2015**, *9*. [[CrossRef](#)]
39. Fernández-Sánchez, L.; Esquiva, G.; Pinilla, I.; Lax, P.; Cuenca, N. Retinal Vascular Degeneration in the Transgenic P23H Rat Model of Retinitis Pigmentosa. *Front. Neuroanat.* **2018**, *12*. [[CrossRef](#)]
40. Frasson, M.; Picaud, S.; Léveillard, T.; Simonutti, M.; Mohand-Said, S.; Dreyfus, H.; Hicks, D.; Sabel, J. Glial cell line-derived neurotrophic factor induces histologic and functional protection of rod photoreceptors in the rd/rd mouse. *Investig. Ophthalmol. Vis. Sci.* **1999**, *40*, 2724–2734.
41. Bush, R.A.; Lei, B.; Tao, W.; Raz, D.; Chan, C.-C.; Cox, T.A.; Santos-Muffley, M.; Sieving, P.A. Encapsulated cell-based intraocular delivery of ciliary neurotrophic factor in normal rabbit: Dose-dependent effects on ERG and retinal histology. *Investig. Ophthalmol. Vis. Sci.* **2004**, *45*, 2420–2430. [[CrossRef](#)]
42. Uteza, Y.; Rouillot, J.-S.; Kobetz, A.; Marchant, D.; Pecqueur, S.; Arnaud, E.; Prats, H.; Honiger, J.; Dufier, J.-L.; Abitbol, M.; et al. Intravitreal transplantation of encapsulated fibroblasts secreting the human fibroblast growth factor 2 delays photoreceptor cell degeneration in Royal College of Surgeons rats. *Proc. Natl. Acad. Sci. USA* **1999**, *96*, 3126–3131. [[CrossRef](#)]
43. Frasson, M.; Sahel, J.-A.; Fabre, M.; Simonutti, M.; Dreyfus, H.; Picaud, S. Retinitis pigmentosa: Rod photoreceptor rescue by a calcium-channel blocker in the rd mouse. *Nat. Med.* **1999**, *5*, 1183–1187. [[CrossRef](#)] [[PubMed](#)]
44. Smith, L.E. Bone marrow-derived stem cells preserve cone vision in retinitis pigmentosa. *J. Clin. Investig.* **2004**, *114*, 755–757. [[CrossRef](#)] [[PubMed](#)]
45. Samardzija, M.; Todorova, V.; Gougoulakis, L.; Barben, M.; Nötzli, S.; Klee, K.; Storti, F.; Gubler, A.; Imsand, C.; Grimm, C. Light stress affects cones and horizontal cells via rhodopsin-mediated mechanisms. *Exp. Eye Res.* **2019**, *186*, 107719. [[CrossRef](#)] [[PubMed](#)]
46. Rohowetz, L.J.; Kraus, J.G.; Koulen, P. Reactive Oxygen Species-Mediated Damage of Retinal Neurons: Drug Development Targets for Therapies of Chronic Neurodegeneration of the Retina. *Int. J. Mol. Sci.* **2018**, *19*, 3362. [[CrossRef](#)]
47. Domènech, E.B.; Marfany, G. The Relevance of Oxidative Stress in the Pathogenesis and Therapy of Retinal Dystrophies. *Antioxidants* **2020**, *9*, 347. [[CrossRef](#)] [[PubMed](#)]
48. Nedić, O.; Rattan, S.I.; Grune, T.; Trougakos, I.P. Molecular effects of advanced glycation end products on cell signalling pathways, ageing and pathophysiology. *Free Radic. Res.* **2013**, *47*, 28–38. [[CrossRef](#)] [[PubMed](#)]
49. Kaarniranta, K.; Kajdaneck, J.; Morawiec, J.; Pawlowska, E.; Blasiak, J. PGC-1 α Protects RPE Cells of the Aging Retina against Oxidative Stress-Induced Degeneration through the Regulation of Senescence and Mitochondrial Quality Control. The Significance for AMD Pathogenesis. *Int. J. Mol. Sci.* **2018**, *19*, 2317. [[CrossRef](#)]
50. Honda, S.; Hjelmeland, L.M.; Handa, J.T. Oxidative stress—Induced single-strand breaks in chromosomal telomeres of human retinal pigment epithelial cells in vitro. *Investig. Ophthalmol. Vis. Sci.* **2001**, *42*, 2139–2144.
51. Cai, J.; Nelson, K.C.; Wu, M.; Sternberg, P.; Jones, D.P. Oxidative damage and protection of the RPE. *Prog. Retin. Eye Res.* **2000**, *19*, 205–221. [[CrossRef](#)]

52. Kaamiranta, K.; Koskela, A.; Felszeghy, S.; Kivinen, N.; Salminen, A.; Kauppinen, A. Fatty acids and oxidized lipoproteins contribute to autophagy and innate immunity responses upon the degeneration of retinal pigment epithelium and development of age-related macular degeneration. *Biochimie* **2019**, *159*, 49–54. [[CrossRef](#)] [[PubMed](#)]
53. Ogasawara, M.; Zhang, H. Redox Regulation and Its Emerging Roles in Stem Cells and Stem-Like Cancer Cells. *Antioxid. Redox Signal.* **2009**, *11*, 1107–1122. [[CrossRef](#)] [[PubMed](#)]
54. Benhar, M. Oxidants, Antioxidants and Thiol Redox Switches in the Control of Regulated Cell Death Pathways. *Antioxidants* **2020**, *9*, 309. [[CrossRef](#)]
55. Saccà, S.S.; Roszkowska, A.M.; Izzotti, A. Environmental light and endogenous antioxidants as the main determinants of non-cancer ocular diseases. *Mutat. Res. Mutat. Res.* **2013**, *752*, 153–171. [[CrossRef](#)]
56. Donato, L.; Scimone, C.; Alibrandi, S.; Nicocia, G.; Rinaldi, C.; Sidoti, A.; D'Angelo, R. Discovery of GLO1 New Related Genes and Pathways by RNA-Seq on A2E-Stressed Retinal Epithelial Cells Could Improve Knowledge on Retinitis Pigmentosa. *Antioxidants* **2020**, *9*, 416. [[CrossRef](#)]
57. Sano, R.; Reed, J.C. ER stress-induced cell death mechanisms. *Biochim. Biophys. Acta BBA Bioenerg.* **2013**, *1833*, 3460–3470. [[CrossRef](#)]
58. Li, J.; Wang, J.J.; Yu, Q.; Wang, M.; Zhang, S.X. Endoplasmic reticulum stress is implicated in retinal inflammation and diabetic retinopathy. *FEBS Lett.* **2009**, *583*, 1521–1527. [[CrossRef](#)]
59. Anderson, P.J.; Kedersha, N. Stress granules. *Curr. Biol.* **2009**, *19*, R397–R398. [[CrossRef](#)]
60. Kunchithapautham, K.; Rohrer, B. Apoptosis and Autophagy in Photoreceptors Exposed to Oxidative Stress. *Autophagy* **2007**, *3*, 433–441. [[CrossRef](#)]
61. Lin, W.-J.; Kuang, H.Y. Oxidative stress induces autophagy in response to multiple noxious stimuli in retinal ganglion cells. *Autophagy* **2014**, *10*, 1692–1701. [[CrossRef](#)] [[PubMed](#)]
62. Mitter, S.K.; Song, C.; Qi, X.; Mao, H.; Rao, H.; Akin, D.; Lewin, A.; Grant, M.; Dunn, W.; Ding, J.; et al. Dysregulated autophagy in the RPE is associated with increased susceptibility to oxidative stress and AMD. *Autophagy* **2014**, *10*, 1989–2005. [[CrossRef](#)] [[PubMed](#)]
63. Datta, S.; Cano, M.; Ebrahimi, K.; Wang, L.; Handa, J.T. The impact of oxidative stress and inflammation on RPE degeneration in non-neovascular AMD. *Prog. Retin. Eye Res.* **2017**, *60*, 201–218. [[CrossRef](#)]
64. Fuhrmann, S.; Zou, C.; Levine, E.M. Retinal pigment epithelium development, plasticity, and tissue homeostasis. *Exp. Eye Res.* **2014**, *123*, 141–150. [[CrossRef](#)] [[PubMed](#)]
65. Fulda, S.; Gorman, A.M.; Hori, O.; Samali, A. Cellular Stress Responses: Cell Survival and Cell Death. *Int. J. Cell Biol.* **2010**, *2010*, 214074. [[CrossRef](#)]
66. Galluzzi, L.; Vitale, I.; Aaronson, S.A.; Abrams, J.M.; Adam, D.; Agostinis, P.; Alnemri, E.S.; Altucci, L.; Amelio, I.; Andrews, D.W.; et al. Molecular mechanisms of cell death: Recommendations of the Nomenclature Committee on Cell Death 2018. *Cell Death Differ.* **2018**, *25*, 486–541. [[CrossRef](#)]
67. Tang, D.; Kang, R.; Berghe, T.V.; Vandenamee, P.; Kroemer, G. The molecular machinery of regulated cell death. *Cell Res.* **2019**, *29*, 347–364. [[CrossRef](#)]
68. Sies, H.; Jones, D.P. Reactive oxygen species (ROS) as pleiotropic physiological signalling agents. *Nat. Rev. Mol. Cell Biol.* **2020**, *21*, 363–383. [[CrossRef](#)]
69. Sies, H. Oxidative stress: A concept in redox biology and medicine. *Redox Biol.* **2015**, *4*, 180–183. [[CrossRef](#)]
70. Langham, M.E.; Kramer, T. Decreased choroidal blood flow associated with retinitis pigmentosa. *Eye* **1990**, *4*, 374–381. [[CrossRef](#)]
71. Murakami, Y.; Ikeda, Y.; Akiyama, M.; Fujiwara, K.; Yoshida, N.; Nakatake, S.; Notomi, S.; Nabeshima, T.; Hisatomi, T.; Enaida, H.; et al. Correlation between macular blood flow and central visual sensitivity in retinitis pigmentosa. *Acta Ophthalmol.* **2015**, *93*, e644–e648. [[CrossRef](#)]
72. Marc, R.E.; Jones, B. Retinal Remodeling in Inherited Photoreceptor Degenerations. *Mol. Neurobiol.* **2003**, *28*, 139–148. [[CrossRef](#)]
73. Peng, Q.; Zhu, W.; Li, C. A research on the mechanism of pigmentary degeneration of retina belonging to deficiency complicated with blood stasis. *Jiangsu Tradit. Chin. Med.* **1990**, *1*, 39–41.
74. Ayton, L.N.; Guymer, R.; Luu, C.D. Choroidal thickness profiles in retinitis pigmentosa. *Clin. Exp. Ophthalmol.* **2012**, *41*. [[CrossRef](#)] [[PubMed](#)]
75. Falsini, B.; Anselmi, G.M.; Marangoni, D.; D'Esposito, F.; Fadda, A.; Di Renzo, A.; Campos, E.C.; Riva, C.E. Subfoveal Choroidal Blood Flow and Central Retinal Function in Retinitis Pigmentosa. *Investig. Ophthalmol. Vis. Sci.* **2011**, *52*, 1064–1069. [[CrossRef](#)] [[PubMed](#)]

76. Bill, A.; Sperber, G.; Ujiie, K. Physiology of the choroidal vascular bed. *Int. Ophthalmol.* **1983**, *6*, 101–107. [[CrossRef](#)]
77. Lieberthal, W.; Triaca, V.; Koh, J.S.; Pagano, P.J.; Levine, J.S. Role of superoxide in apoptosis induced by growth factor withdrawal. *Am. J. Physiol. Content* **1998**, *275*, F691–F702. [[CrossRef](#)]
78. Yu, D.-Y.; Cringle, S.; Valter, K.; Walsh, N.; Lee, D.; Stone, J. Photoreceptor Death, Trophic Factor Expression, Retinal Oxygen Status, and Photoreceptor Function in the P23H Rat. *Investig. Ophthalmol. Vis. Sci.* **2004**, *45*, 2013–2019. [[CrossRef](#)]
79. Yu, D.-Y.; Cringle, S.J. Retinal degeneration and local oxygen metabolism. *Exp. Eye Res.* **2005**, *80*, 745–751. [[CrossRef](#)]
80. Jain, S.; Thakkar, N.; Chhatai, J.; Bhadra, M.P.; Bhadra, U. Long non-coding RNA: Functional agent for disease traits. *RNA Biol.* **2016**, *14*, 522–535. [[CrossRef](#)]
81. Donato, L.; Scimone, C.; Alibrandi, S.; Rinaldi, C.; Sidoti, A.; D'Angelo, R. Transcriptome Analyses of lncRNAs in A2E-Stressed Retinal Epithelial Cells Unveil Advanced Links between Metabolic Impairments Related to Oxidative Stress and Retinitis Pigmentosa. *Antioxidants* **2020**, *9*, 318. [[CrossRef](#)] [[PubMed](#)]
82. Fisher, A.B. Reactive Oxygen Species and Cell Signaling in Lung Ischemia. *Cell Signal. Vasc. Inflamm.* **2007**, *31*, 125–135. [[CrossRef](#)]
83. Türksever, C.; Valmaggia, C.; Orgül, S.; Schorderet, D.F.; Flammer, J.; Todorova, M. Retinal vessel oxygen saturation and its correlation with structural changes in retinitis pigmentosa. *Acta Ophthalmol.* **2014**, *92*, 454–460. [[CrossRef](#)] [[PubMed](#)]
84. Donato, L.; Scimone, C.; Nicocia, G.; Denaro, L.; Robledo, R.; Sidoti, A.; D'Angelo, R. GLO1 gene polymorphisms and their association with retinitis pigmentosa: A case–control study in a Sicilian population. *Mol. Biol. Rep.* **2018**, *45*, 1349–1355. [[CrossRef](#)] [[PubMed](#)]
85. Cerman, E.; Akkoc, T.; Eraslan, M.; Şahin, Ö.; Ozkara, S.; Aker, F.V.; Subaşı, C.; Karaoz, E.; Akkoç, T. Correction: Retinal Electrophysiological Effects of Intravitreal Bone Marrow Derived Mesenchymal Stem Cells in Streptozotocin Induced Diabetic Rats. *PLoS ONE* **2016**, *11*, e0165219. [[CrossRef](#)]
86. Kreutzberg, G.W. Microglia: A sensor for pathological events in the CNS. *Trends Neurosci.* **1996**, *19*, 312–318. [[CrossRef](#)]
87. Zeiss, C.; Johnson, E.A. Proliferation of microglia, but not photoreceptors, in the outer nuclear layer of the rd-1 mouse. *Investig. Ophthalmol. Vis. Sci.* **2004**, *45*, 971–976. [[CrossRef](#)]
88. Gupta, N.; Brown, K.E.; Milam, A.H. Activated microglia in human retinitis pigmentosa, late-onset retinal degeneration, and age-related macular degeneration. *Exp. Eye Res.* **2003**, *76*, 463–471. [[CrossRef](#)]
89. Zeng, H.-Y.; Zhu, X.-A.; Zhang, C.; Yang, L.-P.; Wu, L.-M.; Tso, M.O.M. Identification of Sequential Events and Factors Associated with Microglial Activation, Migration, and Cytotoxicity in Retinal Degeneration in rdMice. *Investig. Ophthalmol. Vis. Sci.* **2005**, *46*, 2992–2999. [[CrossRef](#)]
90. Detrick, B.; Hooks, J.J. The RPE Cell and the Immune System. In *Retinal Pigment Epithelium in Health and Disease*; Springer Science and Business Media LLC: Berlin/Heidelberg, Germany, 2019; pp. 101–114.
91. Rashid, K.; Akhtar-Schaefer, I.; Langmann, T. Microglia in Retinal Degeneration. *Front. Immunol.* **2019**, *10*. [[CrossRef](#)]
92. Banati, R.B.; Gehrmann, J.; Schubert, P.; Kreutzberg, G.W. Cytotoxicity of microglia. *Glia* **1993**, *7*, 111–118. [[CrossRef](#)] [[PubMed](#)]
93. Boje, K.M.; Arora, P.K. Microglial-produced nitric oxide and reactive nitrogen oxides mediate neuronal cell death. *Brain Res.* **1992**, *587*, 250–256. [[CrossRef](#)]
94. Zhao, L.; Zabel, M.K.; Wang, X.; Ma, W.; Shah, P.; Fariss, R.N.; Qian, H.; Parkhurst, C.N.; Gan, W.; Wong, W.T. Microglial phagocytosis of living photoreceptors contributes to inherited retinal degeneration. *EMBO Mol. Med.* **2015**, *7*, 1179–1197. [[CrossRef](#)] [[PubMed](#)]
95. Peng, B.; Xiao, J.; Wang, K.; So, K.F.; Tipoe, G.L.; Lin, B. Suppression of Microglial Activation Is Neuroprotective in a Mouse Model of 21. Human Retinitis Pigmentosa. *J. Neurosci.* **2014**, *34*, 8139–8150. [[CrossRef](#)] [[PubMed](#)]
96. Subirada, P.V.; Paz, M.C.; Ridano, M.E.; Lorenc, V.E.; Vaglianti, M.V.; Barcelona, P.F.; Luna, J.D.; Sánchez, M.C. A journey into the retina: Müller glia commanding survival and death. *Eur. J. Neurosci.* **2018**, *47*, 1429–1443. [[CrossRef](#)]
97. Klassen, H. Stem cells in clinical trials for treatment of retinal degeneration. *Expert Opin. Biol. Ther.* **2015**, *16*, 7–14. [[CrossRef](#)] [[PubMed](#)]

98. Idelson, M.; Alper, R.; Obolensky, A.; Ben-Shushan, E.; Hemo, I.; Yachimovich-Cohen, N.; Khaner, H.; Smith, Y.; Wisner, O.; Gropp, M.; et al. Directed Differentiation of Human Embryonic Stem Cells into Functional Retinal Pigment Epithelium Cells. *Cell Stem Cell* **2009**, *5*, 396–408. [[CrossRef](#)]
99. Takahashi, K.; Yamanaka, S. Induced pluripotent stem cells in medicine and biology. *Development* **2013**, *140*, 2457–2461. [[CrossRef](#)]
100. Ding, S.L.S.; Kumar, S.; Mok, P.L. Cellular Reparative Mechanisms of Mesenchymal Stem Cells for Retinal Diseases. *Int. J. Mol. Sci.* **2017**, *18*, 1406. [[CrossRef](#)]
101. Huo, D.-M.; Dong, F.-T.; Yu, W.-H.; Gao, F. Differentiation of mesenchymal stem cell in the microenvironment of retinitis pigmentosa. *Int. J. Ophthalmol.* **2010**, *3*, 216–219.
102. Zarbin, M. Cell-Based Therapy for Degenerative Retinal Disease. *Trends Mol. Med.* **2016**, *22*, 115–134. [[CrossRef](#)] [[PubMed](#)]
103. Siqueira, R.C.; Messias, A.; Voltarelli, J.C.; Scott, I.U.; Jorge, R. Intravitreal injection of autologous bone marrow-derived mononuclear cells for hereditary retinal dystrophy. *Retina* **2011**, *31*, 1207–1214. [[CrossRef](#)] [[PubMed](#)]
104. Siqueira, R.C.; Messias, A.; Messias, K.; Arcieri, R.S.; Ruiz, M.A.; Souza, N.F.; Martins, L.C.; Jorge, R. Quality of life in patients with retinitis pigmentosa submitted to intravitreal use of bone marrow-derived stem cells (Reticell-clinical trial). *Stem Cell Res. Ther.* **2015**, *6*, 29. [[CrossRef](#)] [[PubMed](#)]
105. Park, S.S.; Bauer, G.; Abedi, M.; Pontow, S.; Panorgias, A.; Jonnal, R.; Zawadzki, R.J.; Werner, J.S.; Nolta, J. Intravitreal Autologous Bone Marrow CD34+ Cell Therapy for Ischemic and Degenerative Retinal Disorders: Preliminary Phase 1 Clinical Trial Findings. *Investig. Ophthalmol. Vis. Sci.* **2014**, *56*, 81–89. [[CrossRef](#)]
106. Jones, M.K.; Lu, B.; Girman, S.; Wang, S. Cell-based therapeutic strategies for replacement and preservation in retinal degenerative diseases. *Prog. Retin. Eye Res.* **2017**, *58*, 1–27. [[CrossRef](#)]
107. Romanov, Y.A.; Darevskaya, A.N.; Merzlikina, N.V.; Buravkova, L.B. Mesenchymal Stem Cells from Human Bone Marrow and Adipose Tissue: Isolation, Characterization, and Differentiation Potentialities. *Bull. Exp. Biol. Med.* **2005**, *140*, 138–143. [[CrossRef](#)]
108. Lindroos, B.; Suuronen, R.; Miettinen, S. The Potential of Adipose Stem Cells in Regenerative Medicine. *Stem Cell Rev. Rep.* **2010**, *7*, 269–291. [[CrossRef](#)]
109. Öner, A.; Sevim, D.G. Complications of stem cell-based therapies in retinal diseases. *Stem Cell Res. Open Library* **2017**, *1*, 1–7.
110. Dominici, M.; Le Blanc, K.; Mueller, I.; Slaper-Cortenbach, I.; Marini, F.; Krause, D.; Deans, R.; Keating, A.; Prockop, D.; Horwitz, E. Minimal criteria for defining multipotent mesenchymal stromal cells. The International Society for Cellular Therapy position statement. *Cytherapy* **2006**, *8*, 315–317. [[CrossRef](#)]
111. Bara, J.J.; Richards, R.G.; Alini, M.; Stoddart, M.J. Concise Review: Bone Marrow-Derived Mesenchymal Stem Cells Change Phenotype Following In Vitro Culture: Implications for Basic Research and the Clinic. *Stem Cells* **2014**, *32*, 1713–1723. [[CrossRef](#)]
112. Baddour, J.A.; Sousounis, K.; Tsonis, P.A. Organ repair and regeneration: An overview. *Birth Defects Res. Part C Embryo Today Rev.* **2012**, *96*, 1–29. [[CrossRef](#)] [[PubMed](#)]
113. Ruster, B.; Gottig, S.; Ludwig, R.J.; Bistrrian, R.; Muller, S.; Seifried, E.; Gille, J.; Henschler, R. Mesenchymal stem cells display coordinated rolling and adhesion behavior on endothelial cells. *Blood* **2006**, *108*, 3938–3944. [[CrossRef](#)]
114. De Becker, A.; Van Hummelen, P.; Bakkus, M.; Broek, I.V.; De Wever, J.; De Waele, M.; Van Riet, I. Migration of culture-expanded human mesenchymal stem cells through bone marrow endothelium is regulated by matrix metalloproteinase-2 and tissue inhibitor of metalloproteinase-3. *Haematologica* **2007**, *92*, 440–449. [[CrossRef](#)]
115. Luo, S.; Hao, L.; Li, X.; Yu, N.; Diao, Z.; Ren, L.; Xu, H. Adipose tissue-derived stem cells treated with estradiol enhance survival of autologous fat transplants. *Tohoku J. Exp. Med.* **2013**, *231*, 101–110. [[CrossRef](#)] [[PubMed](#)]
116. Hu, Z.-L.; Li, N.; Wei, X.; Tang, L.; Wang, T.-H.; Chen, X.-M. Neuroprotective effects of BDNF and GDNF in intravitreally transplanted mesenchymal stem cells after optic nerve crush in mice. *Int. J. Ophthalmol.* **2017**, *10*, 35–42. [[CrossRef](#)] [[PubMed](#)]
117. Wang, P.; Mariman, E.; Renes, J.; Keijzer, J. The secretory function of adipocytes in the physiology of white adipose tissue. *J. Cell. Physiol.* **2008**, *216*, 3–13. [[CrossRef](#)]

118. Tilg, H.; Moschen, A.R. Adipocytokines: Mediators linking adipose tissue, inflammation and immunity. *Nat. Rev. Immunol.* **2006**, *6*, 772–783. [[CrossRef](#)]
119. Nakagami, H.; Morishita, R.; Maeda, K.; Kikuchi, Y.; Ogihara, T.; Kaneda, Y. Adipose Tissue-Derived Stromal Cells as a Novel Option for Regenerative Cell Therapy. *J. Atheroscler. Thromb.* **2006**, *13*, 77–81. [[CrossRef](#)]
120. Schäffler, A.; Buchler, C.H. Concise Review: Adipose Tissue-Derived Stromal Cells-Basic and Clinical Implications for Novel Cell-Based Therapies. *Stem Cells* **2007**, *25*, 818–827. [[CrossRef](#)]
121. Jurk, K.; Kehrel, B.E. Platelets: Physiology and Biochemistry. *Semin. Thromb. Hemost.* **2005**, *31*, 381–392. [[CrossRef](#)]
122. Mishra, A.; Velotta, J.; Brinton, T.J.; Wang, X.; Chang, S.; Palmer, O.; Sheikh, A.; Chung, J.; Yang, P.C.-M.; Robbins, R.; et al. RevaTen platelet-rich plasma improves cardiac function after myocardial injury. *Cardiovasc. Revascularization Med.* **2011**, *12*, 158–163. [[CrossRef](#)]
123. Qureshi, A.H.; Chaoji, V.; Maignel, D.; Faridi, M.H.; Barth, C.J.; Salem, S.M.; Singhal, M.; Stoub, D.; Krastins, B.; Ogihara, M.; et al. Proteomic and Phospho-Proteomic Profile of Human Platelets in Basal, Resting State: Insights into Integrin Signaling. *PLoS ONE* **2009**, *4*, e7627. [[CrossRef](#)] [[PubMed](#)]
124. Osborne, A.; Sanderson, J.; Martin, K.R. Neuroprotective Effects of Human Mesenchymal Stem Cells and Platelet-Derived Growth Factor on Human Retinal Ganglion Cells. *Stem Cells* **2017**, *36*, 65–78. [[CrossRef](#)] [[PubMed](#)]
125. Lykov, A.P.; Poveshchenk, O.V.; Surovtseva, M.A.; Stanishevskaya, O.M.; Chernykh, D.V.; Arben'Eva, N.S.; Bratko, V. Autologous Plasma Enriched with Platelet Lysate for the Treatment of Idiopathic Age-Related Macular Degeneration: A Prospective Study. *Ann. Russ. Acad. Med. Sci.* **2018**, *73*, 40–48. [[CrossRef](#)]
126. Arslan, U.; Özmert, E.; Demirel, S.; Örneç, F.; Şermet, F. Effects of subtenon-injected autologous platelet-rich plasma on visual functions in eyes with retinitis pigmentosa: Preliminary clinical results. *Graefe's Arch. Clin. Exp. Ophthalmol.* **2018**, *256*, 893–908. [[CrossRef](#)]
127. Siqueira, R.C.; Messias, A.; Gurgel, V.P.; Simões, B.P.; Scott, I.U.; Jorge, R. Improvement of ischaemic macular oedema after intravitreal injection of autologous bone marrow-derived haematopoietic stem cells. *Acta Ophthalmol.* **2014**, *93*, 174–176. [[CrossRef](#)] [[PubMed](#)]
128. Öner, A.; Gonen, Z.B.; Sinim, N.; Cetin, M.; Ozkul, Y. Subretinal adipose tissue-derived mesenchymal stem cell implantation in advanced stage retinitis pigmentosa: A phase I clinical safety study. *Stem Cell Res. Ther.* **2016**, *7*, 178. [[CrossRef](#)]
129. Kahraman, N.S.; Öner, A. Umbilical cord derived mesenchymal stem cell implantation in retinitis pigmentosa: A 6-month follow-up results of a phase 3 trial. *Int J Ophthalmol.* **2020**, *13*, 1423–1429. [[CrossRef](#)]
130. Limoli, P.G.; Vingolo, E.M.; Morales, M.U.; Nebbioso, M.; Limoli, C. Preliminary Study on Electrophysiological Changes after Cellular Autograft in Age-Related Macular Degeneration. *Medicine* **2014**, *93*, e355. [[CrossRef](#)]
131. Limoli, P.G.; Vingolo, E.M.; Limoli, C.; Nebbioso, M. Stem Cell Surgery and Growth Factors in Retinitis Pigmentosa Patients: Pilot Study after Literature Review. *Biomedicines* **2019**, *7*, 94. [[CrossRef](#)]
132. Limoli, P.G.; Limoli, C.S.S.; Morales, M.U.; Vingolo, E.M. Mesenchymal stem cell surgery, rescue and regeneration in retinitis pigmentosa: Clinical and rehabilitative prognostic aspects. *Restor. Neurol. Neurosci.* **2020**, *38*, 1–15. [[CrossRef](#)] [[PubMed](#)]
133. Limoli, P.G.; Limoli, C.; Vingolo, E.M.; Scalinci, S.Z.; Nebbioso, M. Cell surgery and growth factors in dry age-related macular degeneration: Visual prognosis and morphological study. *Oncotarget* **2016**, *7*, 46913–46923. [[CrossRef](#)] [[PubMed](#)]
134. Limoli, P.G.; Vingolo, E.M.; Limoli, C.; Scalinci, S.Z.; Nebbioso, M. Regenerative Therapy by Suprachoroidal Cell Autograft in Dry Age-related Macular Degeneration: Preliminary In Vivo Report. *J. Vis. Exp.* **2018**, *12*, e56469. [[CrossRef](#)] [[PubMed](#)]
135. Öner, A. Stem Cell Treatment in Retinal Diseases: Recent Developments. *Turk. J. Ophthalmol.* **2018**, *48*, 33–38. [[CrossRef](#)]
136. Mok, P.L.; Leong, C.F.; Cheong, S.-K. Cellular mechanisms of emerging applications of mesenchymal stem cells. *Malays. J. Pathol.* **2013**, *35*, 17–32.
137. Kim, K.-S.; Park, J.-M.; Kong, T.; Kim, C.; Bae, S.-H.; Kim, H.W.; Moon, J. Retinal Angiogenesis Effects of TGF- β 1 and Paracrine Factors Secreted from Human Placental Stem Cells in Response to a Pathological Environment. *Cell Transplant.* **2016**, *25*, 1145–1157. [[CrossRef](#)]

138. Zhao, P.-T.; Zhang, L.-J.; Shao, H.; Bai, L.-L.; Yu, B.; Su, C.; Dong, L.-J.; Liu, X.; Li, X.; Zhang, X. Therapeutic effects of mesenchymal stem cells administered at later phase of recurrent experimental autoimmune uveitis. *Int. J. Ophthalmol.* **2016**, *9*, 1381–1389. [[CrossRef](#)]
139. Salehi, H.; Amirpour, N.; Razavi, S.; Esfandiari, E.; Zavar, R. Overview of retinal differentiation potential of mesenchymal stem cells: A promising approach for retinal cell therapy. *Ann. Anat. Anat. Anz.* **2017**, *210*, 52–63. [[CrossRef](#)]
140. Moraes, L.; Vasconcelos-Dos-Santos, A.; Santana, F.C.; Godoy, M.A.; Rosado-De-Castro, P.H.; Jasmin; Azevedo-Pereira, R.L.; Cintra, W.M.; Gasparetto, E.L.; Santiago, M.F.; et al. Neuroprotective effects and magnetic resonance imaging of mesenchymal stem cells labeled with SPION in a rat model of Huntington's disease. *Stem Cell Res.* **2012**, *9*, 143–155. [[CrossRef](#)]
141. Kyurkchiev, D. Secretion of immunoregulatory cytokines by mesenchymal stem cells. *World J. Stem Cells* **2014**, *6*, 552–570. [[CrossRef](#)]
142. Johnson, T.V.; DeKorver, N.W.; Levasseur, V.A.; Osborne, A.; Tassoni, A.; Lorber, B.; Heller, J.P.; Villasmil, R.; Bull, N.D.; Martin, K.R.; et al. Identification of retinal ganglion cell neuroprotection conferred by platelet-derived growth factor through analysis of the mesenchymal stem cell secretome. *Brain* **2013**, *137*, 503–519. [[CrossRef](#)] [[PubMed](#)]
143. Mead, B.; Logan, A.; Berry, M.; Leadbeater, W.; Scheven, B.A. Paracrine-Mediated Neuroprotection and Neuritogenesis of Axotomised Retinal Ganglion Cells by Human Dental Pulp Stem Cells: Comparison with Human Bone Marrow and Adipose-Derived Mesenchymal Stem Cells. *PLoS ONE* **2014**, *9*, e109305. [[CrossRef](#)] [[PubMed](#)]
144. Pittenger, M.F.; Mackay, A.M.; Beck, S.C.; Jaiswal, R.K.; Douglas, R.; Mosca, J.D.; Moorman, M.A.; Simonetti, D.W.; Craig, S.; Marshak, D.R. Multilineage Potential of Adult Human Mesenchymal Stem Cells. *Science* **1999**, *284*, 143–147. [[CrossRef](#)] [[PubMed](#)]
145. Siniscalco, D.; Giordano, C.; Galderisi, U.; Luongo, L.; Alessio, N.; Di Bernardo, G.; De Novellis, V.; Rossi, F.; Maione, S. Intra-brain microinjection of human mesenchymal stem cells decreases allodynia in neuropathic mice. *Cell. Mol. Life Sci.* **2009**, *67*, 655–669. [[CrossRef](#)]
146. Rezanejad, H.; Soheili, Z.-S.; Haddad, F.; Matin, M.M.; Samiei, S.; Manafi, A.; Ahmadi, H. In vitro differentiation of adipose-tissue-derived mesenchymal stem cells into neural retinal cells through expression of human PAX6 (5a) gene. *Cell Tissue Res.* **2014**, *356*, 65–75. [[CrossRef](#)]
147. Emre, E.; Yüksel, N.; Duruksu, G.; Pirhan, D.; Subaşı, C.; Erman, G.; Karaöz, E. Neuroprotective effects of intravitreally transplanted adipose tissue and bone marrow-derived mesenchymal stem cells in an experimental ocular hypertension model. *Cytotherapy* **2015**, *17*, 543–559. [[CrossRef](#)]
148. Hofer, H.R.; Tuan, R.S. Secreted trophic factors of mesenchymal stem cells support neurovascular and musculoskeletal therapies. *Stem Cell Res. Ther.* **2016**, *7*, 131. [[CrossRef](#)]
149. Garcia, T.B.; Hollborn, M.; Bringmann, A. Expression and signaling of NGF in the healthy and injured retina. *Cytokine Growth Factor Rev.* **2017**, *34*, 43–57. [[CrossRef](#)]
150. Sluch, V.M.; Zack, D.J. Stem cells, retinal ganglion cells and glaucoma. *Dev. Ophthalmol.* **2014**, *53*, 111–121. [[CrossRef](#)]
151. Mesentier-Louro, L.A.; Zaverucha-Do-Valle, C.; Rosado-De-Castro, P.H.; Silva-Junior, A.J.; Pimentel-Coelho, P.M.; Mendez-Otero, R.; Santiago, M.F. Bone Marrow-Derived Cells as a Therapeutic Approach to Optic Nerve Diseases. *Stem Cells Int.* **2016**, *2016*, 5078619. [[CrossRef](#)]
152. Lai, R.C.; Yeo, R.W.Y.; Lim, S.K. Mesenchymal stem cell exosomes. *Semin. Cell Dev. Biol.* **2015**, *40*, 82–88. [[CrossRef](#)] [[PubMed](#)]
153. Burrello, J.; Monticone, S.; Gai, C.; Gomez, Y.; Kholia, S.; Camussi, G. Stem Cell-Derived Extracellular Vesicles and Immune-Modulation. *Front. Cell Dev. Biol.* **2016**, *4*, 83. [[CrossRef](#)] [[PubMed](#)]
154. Wyse, R.D.; Dunbar, G.L.; Rossignol, J. Use of Genetically Modified Mesenchymal Stem Cells to Treat Neurodegenerative Diseases. *Int. J. Mol. Sci.* **2014**, *15*, 1719–1745. [[CrossRef](#)] [[PubMed](#)]
155. Yu, B.; Shao, H.; Su, C.; Jiang, Y.; Chen, X.; Bai, L.; Zhang, Y.; Li, Q.; Zhang, X.; Li, X. Exosomes derived from MSCs ameliorate retinal laser injury partially by inhibition of MCP-1. *Sci. Rep.* **2016**, *6*, srep34562. [[CrossRef](#)] [[PubMed](#)]
156. Liang, X.; Ding, Y.; Zhang, Y.; Tse, H.-F.; Lian, Q. Paracrine Mechanisms of Mesenchymal Stem Cell-Based Therapy: Current Status and Perspectives. *Cell Transplant.* **2014**, *23*, 1045–1059. [[CrossRef](#)]

157. Ezquer, M.; Urzua, C.A.; Montecino, S.; Leal, K.; Conget, P.A.; Ezquer, F. Intravitreal administration of multipotent mesenchymal stromal cells triggers a cytoprotective microenvironment in the retina of diabetic mice. *Stem Cell Res. Ther.* **2016**, *7*, 42. [[CrossRef](#)]
158. Kinnaird, T.; Stabile, E.; Burnett, J.C.; Shou, M.; Lee, C.; Barr, S.; Fuchs, S.; Epstein, S. Local Delivery of Marrow-Derived Stromal Cells Augments Collateral Perfusion Through Paracrine Mechanisms. *Circulation* **2004**, *109*, 1543–1549. [[CrossRef](#)]
159. Gao, F.; Hou, H.; Liang, H.; Weinreb, R.N.; Wang, H.; Wang, Y. Bone marrow-derived cells in ocular neovascularization: Contribution and mechanisms. *Angiogenesis* **2016**, *19*, 107–118. [[CrossRef](#)]
160. Sheibani, N.; Sorenson, C.M.; Cornelius, L.A.; Frazier, W.A. Thrombospondin-1, a Natural Inhibitor of Angiogenesis, Is Present in Vitreous and Aqueous Humor and Is Modulated by Hyperglycemia. *Biochem. Biophys. Res. Commun.* **2000**, *267*, 257–261. [[CrossRef](#)]
161. Carron, J.A.; Hiscott, P.; Hagan, S.; Sheridan, C.M.; Magee, R.; Gallagher, J.A. Cultured human retinal pigment epithelial cells differentially express thrombospondin-1, -2, -3, and -4. *Int. J. Biochem. Cell Biol.* **2000**, *32*, 1137–1142. [[CrossRef](#)]
162. Chu, L.-Y.; Ramakrishnan, D.P.; Silverstein, R.L. Thrombospondin-1 modulates VEGF signaling via CD36 by recruiting SHP-1 to VEGFR2 complex in microvascular endothelial cells. *Blood* **2013**, *122*, 1822–1832. [[CrossRef](#)] [[PubMed](#)]
163. Bhanot, S.; Alex, J.C. Current Applications of Platelet Gels in Facial Plastic Surgery. *Facial Plast. Surg.* **2002**, *18*, 027–034. [[CrossRef](#)]
164. Mammoto, T.; Jiang, A.; Jiang, E.; Mammoto, A. Platelet rich plasma extract promotes angiogenesis through the angiopoietin1-Tie2 pathway. *Microvasc. Res.* **2013**, *89*, 15–24. [[CrossRef](#)] [[PubMed](#)]
165. Rajashekhar, G.; Ramadan, A.; Abburi, C.; Callaghan, B.; Traktuev, D.O.; Evans-Molina, C.; Maturi, R.; Harris, A.; Kern, T.S.; March, K.L. Regenerative Therapeutic Potential of Adipose Stromal Cells in Early Stage Diabetic Retinopathy. *PLoS ONE* **2014**, *9*, e84671. [[CrossRef](#)]
166. Cui, Y.; Xu, N.; Xu, W.; Xu, G. Mesenchymal stem cells attenuate hydrogen peroxide-induced oxidative stress and enhance neuroprotective effects in retinal ganglion cells. *Vitr. Cell. Dev. Biol. Anim.* **2016**, *53*, 328–335. [[CrossRef](#)] [[PubMed](#)]
167. Ding, S.L.S.; Subbiah, S.K.; Khan, M.S.A.; Farhana, A.; Mok, P.L. Empowering Mesenchymal Stem Cells for Ocular Degenerative Disorders. *Int. J. Mol. Sci.* **2019**, *20*, 1784. [[CrossRef](#)] [[PubMed](#)]
168. Whone, A.L.; Kemp, K.; Sun, M.; Wilkins, A.; Scolding, N.J. Human bone marrow mesenchymal stem cells protect catecholaminergic and serotonergic neuronal perikarya and transporter function from oxidative stress by the secretion of glial-derived neurotrophic factor. *Brain Res.* **2012**, *1431*, 86–96. [[CrossRef](#)]
169. Yamada, H.; Yamada, E.; Ando, A.; Esumi, N.; Bora, N.; Saikia, J.; Sung, C.-H.; Zack, D.J.; Campochiaro, P.A. Fibroblast Growth Factor-2 Decreases Hyperoxia-Induced Photoreceptor Cell Death in Mice. *Am. J. Pathol.* **2001**, *159*, 1113–1120. [[CrossRef](#)]
170. Hauck, S.M.; Kinkl, N.; Deeg, C.A.; Lange, M.S.-D.; Schöffmann, S.; Ueffing, M. GDNF Family Ligands Trigger Indirect Neuroprotective Signaling in Retinal Glial Cells. *Mol. Cell. Biol.* **2006**, *26*, 2746–2757. [[CrossRef](#)]
171. Yang, Y.; Mohand-Said, S.; Danan, A.; Simonutti, M.; Fontaine, V.; Clérin, E.; Picaud, S.; Léveillard, T.; Sahel, J.-A. Functional Cone Rescue by RdCVF Protein in a Dominant Model of Retinitis Pigmentosa. *Mol. Ther.* **2009**, *17*, 787–795. [[CrossRef](#)]
172. Byrne, L.C.; Dalkara, D.; Luna, G.; Fisher, S.K.; Clérin, E.; Sahel, J.-A.; Léveillard, T.; Flannery, J.G. Viral-mediated RdCVF and RdCVFL expression protects cone and rod photoreceptors in retinal degeneration. *J. Clin. Investig.* **2014**, *125*, 105–116. [[CrossRef](#)] [[PubMed](#)]
173. Madeira, M.H.; Boia, R.; Santos, P.F.; Ambrósio, A.F.; Santiago, A.R. Contribution of Microglia-Mediated Neuroinflammation to Retinal Degenerative Diseases. *Mediat. Inflamm.* **2015**, *2015*, 673090. [[CrossRef](#)] [[PubMed](#)]
174. Lull, M.E.; Block, M.L. Microglial activation and chronic neurodegeneration. *Neurotherapeutics* **2010**, *7*, 354–365. [[CrossRef](#)] [[PubMed](#)]
175. Holan, V.; Hermankova, B.; Krulova, M.; Zajicova, A. Cytokine interplay among the stem cell-based therapy. *World J. Stem Cells* **2019**, *11*, 957–967. [[CrossRef](#)] [[PubMed](#)]
176. Katsuda, T.; Kosaka, N.; Takeshita, F.; Ochiya, T. The therapeutic potential of mesenchymal stem cell-derived extracellular vesicles. *Proteom.* **2013**, *13*, 1637–1653. [[CrossRef](#)] [[PubMed](#)]

177. Mathew, B.; Poston, J.N.; Dreixler, J.C.; Torres, L.; Lopez, J.; Zelkha, R.; Balyasnikova, I.; Lesniak, M.S.; Roth, S. Bone-marrow mesenchymal stem-cell administration significantly improves outcome after retinal ischemia in rats. *Graefes Arch. Clin. Exp. Ophthalmol.* **2017**, *255*, 1581–1592. [[CrossRef](#)]
178. Hooks, J.J.; Nagineni, C.N.; Hooper, L.C.; Hayashi, K.; Detrick, B. IFN-beta provides immuno-protection in the retina by inhibiting ICAM-1 and CXCL9 in retinal pigment epithelial cells. *J. Immunol.* **2008**, *180*, 3789–3796. [[CrossRef](#)]
179. Nemunaitis, J. Macrophage function activating cytokines: Potential clinical application. *Crit. Rev. Oncol.* **1993**, *14*, 153–171. [[CrossRef](#)]
180. Schneider, A.; Krüger, C.; Steigleder, T.; Weber, D.; Pitzer, C.; Laage, R.; Aronowski, J.; Maurer, M.H.; Gassler, N.; Mier, W.; et al. The hematopoietic factor G-CSF is a neuronal ligand that counteracts programmed cell death and drives neurogenesis. *J. Clin. Investig.* **2005**, *115*, 2083–2098. [[CrossRef](#)]
181. Lavail, M.M.; Unoki, K.; Yasumura, D.; Matthes, M.T.; Yancopoulos, G.D.; Steinberg, R.H. Multiple growth factors, cytokines, and neurotrophins rescue photoreceptors from the damaging effects of constant light. *Proc. Natl. Acad. Sci. USA* **1992**, *89*, 11249–11253. [[CrossRef](#)]
182. Nagineni, C.N.; Samuel, W.; Nagineni, S.; Pardhasaradhi, K.; Wiggert, B.; Detrick, B.; Hooks, J.J. Transforming growth factor- β induces expression of vascular endothelial growth factor in human retinal pigment epithelial cells: Involvement of mitogen-activated protein kinases. *J. Cell. Physiol.* **2003**, *197*, 453–462. [[CrossRef](#)] [[PubMed](#)]
183. Nagineni, C.N.; Kutty, V.; Detrick, B.; Hooks, J.J. Expression of PDGF and their receptors in human retinal pigment epithelial cells and fibroblasts: Regulation by TGF-beta. *J. Cell. Phys.* **2005**, *203*, 35–43. [[CrossRef](#)]
184. Wang, S.K.; Xue, Y.; Cepko, C.L. Microglia modulation by TGF- β 1 protects cones in mouse models of retinal degeneration. *J. Clin. Investig.* **2020**, *130*, 4360–4369. [[CrossRef](#)] [[PubMed](#)]
185. Valentijn, A.; Zouq, N.; Gilmore, A.P. Anoikis. *Biochem. Soc. Trans.* **2004**, *32*, 421–425. [[CrossRef](#)] [[PubMed](#)]
186. Calkins, D.J.; Benowitz, L.; Crowston, J.; Huberman, A.; Johnson, E.; Lu, R.; Pekny, M.; Sappington, R.M.; Zack, D.; Calkins, D.J.; et al. The challenge of regenerative therapies for the optic nerve in glaucoma. *Exp. Eye Res.* **2017**, *157*, 28–33. [[CrossRef](#)] [[PubMed](#)]
187. Okazaki, T.; Magaki, T.; Takeda, M.; Kajiwara, Y.; Hanaya, R.; Sugiyama, K.; Arita, K.; Nishimura, M.; Kato, Y.; Kurisu, K. Intravenous administration of bone marrow stromal cells increases survivin and Bcl-2 protein expression and improves sensorimotor function following ischemia in rats. *Neurosci. Lett.* **2008**, *430*, 109–114. [[CrossRef](#)]
188. Oltval, Z.N.; Milliman, C.L.; Korsmeyer, S.J. Bcl-2 heterodimerizes in vivo with a conserved homolog, Bax, that accelerates programmed cell death. *Cell* **1993**, *74*, 609–619. [[CrossRef](#)]
189. Reed, J.C. Mitochondria and Apoptosis. *Science* **1998**, *281*, 1309–1312. [[CrossRef](#)]
190. Tang, Y.; Zhao, Q.; Qin, X.; Shen, L.; Cheng, L.; Su, Y.; Phillips, M.I. Paracrine Action Enhances the Effects of Autologous Mesenchymal Stem Cell Transplantation on Vascular Regeneration in Rat Model of Myocardial Infarction. *Ann. Thorac. Surg.* **2005**, *80*, 229–237. [[CrossRef](#)]
191. Gerber, H.-P.; Dixit, V.; Ferrara, N. Vascular Endothelial Growth Factor Induces Expression of the Antiapoptotic Proteins Bcl-2 and A1 in Vascular Endothelial Cells. *J. Biol. Chem.* **1998**, *273*, 13313–13316. [[CrossRef](#)]
192. Ilić, D.; Almeida, E.A.; Schlaepfer, D.D.; Dazin, P.; Aizawa, S.; Damsky, C.H. Extracellular Matrix Survival Signals Transduced by Focal Adhesion Kinase Suppress p53-mediated Apoptosis. *J. Cell Biol.* **1998**, *143*, 547–560. [[CrossRef](#)] [[PubMed](#)]
193. Liu, Z.Y.; Ganju, R.K.; Wang, J.F.; Schweitzer, K.; Weksler, B.; Avraham, S.; Groopman, J.E. Characterization of signal transduction pathways in human bone marrow endothelial cells. *Blood J. Am. Soc. Hematol.* **1997**, *90*, 2253–2259.
194. Lobo, M.; Zachary, I. Nuclear Localization and Apoptotic Regulation of an Amino-Terminal Domain Focal Adhesion Kinase Fragment in Endothelial Cells. *Biochem. Biophys. Res. Commun.* **2000**, *276*, 1068–1074. [[CrossRef](#)] [[PubMed](#)]
195. Liu, K.; Ji, K.; Guo, L.; Wu, W.; Lu, H.; Shan, P.; Yan, C. Mesenchymal stem cells rescue injured endothelial cells in an in vitro ischemia–reperfusion model via tunneling nanotube like structure-mediated mitochondrial transfer. *Microvasc. Res.* **2014**, *92*, 10–18. [[CrossRef](#)]
196. Sternfeld, M.D.; Robertson, J.E.; Shipley, G.D.; Tsai, J.; Rosenbaum, J.T. Cultured human retinal pigment epithelial cells express basic fibroblast growth factor and its receptor. *Curr. Eye Res.* **1989**, *8*, 1029–1037. [[CrossRef](#)]

197. Tanihara, H.; Yoshida, M.; Matsumoto, M.; Yoshimura, N. Identification of transforming growth factor-beta expressed in cultured human retinal pigment epithelial cells. *Investig. Ophthalmol. Vis. Sci.* **1993**, *34*, 413–419.
198. Adamis, A.; Shima, D.; Yeo, K.; Yeo, T.; Brown, L.; Berse, B.; D'Amore, P.A.; Folkman, J. Synthesis and Secretion of Vascular Permeability Factor/Vascular Endothelial Growth Factor by Human Retinal Pigment Epithelial Cells. *Biochem. Biophys. Res. Commun.* **1993**, *193*, 631–638. [[CrossRef](#)]
199. Wahlin, K.J.; Campochiaro, P.A.; Zack, D.J.; Adler, R. Neurotrophic factors cause activation of intracellular signaling pathways in Müller cells and other cells of the inner retina, but not photoreceptors. *Investig. Ophthalmol. Vis. Sci.* **2000**, *41*, 927–936.
200. Bringmann, A. Role of Muller cells in retinal degenerations. *Front. Biosci.* **2001**, *6*, e77–e92. [[CrossRef](#)]
201. Kolomeyer, A.M.; Zarbin, M.A. Trophic factors in the pathogenesis and therapy for retinal degenerative diseases. *Surv. Ophthalmol.* **2014**, *59*, 134–165. [[CrossRef](#)]
202. Ortín-Martínez, A.; Valiente-Soriano, F.J.; García-Ayuso, D.; Alarcon-Martinez, L.; Jiménez-López, M.; Bernal-Garro, J.M.; Nieto-López, L.; Nadal-Nicolás, F.M.; Villegas-Pérez, M.P.; Wheeler, L.A.; et al. A Novel In Vivo Model of Focal Light Emitting Diode-Induced Cone-Photoreceptor Phototoxicity: Neuroprotection Afforded by Brimonidine, BDNF, PEDF or bFGF. *PLoS ONE* **2014**, *9*, e113798. [[CrossRef](#)] [[PubMed](#)]
203. Othberg, A.; Odin, P.; Ballagi, A.; Funa, K.; Lindvall, O. Specific effects of platelet derived growth factor (PDGF) on fetal rat and human dopaminergic neurons in vitro. *Exp. Brain Res.* **1995**, *105*, 111–122. [[CrossRef](#)] [[PubMed](#)]
204. Kim, S.Y.; Mocanu, C.; Mcleod, D.S.; Bhutto, I.A.; Merges, C.; Eid, M.; Tong, P.; Luty, G.A. Expression of pigment epithelium-derived factor (PEDF) and vascular endothelial growth factor (VEGF) in sickle cell retina and choroid. *Exp. Eye Res.* **2003**, *77*, 433–445. [[CrossRef](#)]
205. Tsang, C.K.; Qi, H.; Liu, L.F.; Zheng, X.F.S. Targeting mammalian target of rapamycin (mTOR) for health and diseases. *Drug Discov. Today* **2007**, *12*, 112–124. [[CrossRef](#)]
206. Chung, S.; Rho, S.; Kim, G.; Kim, S.-R.; Baek, K.-H.; Kang, M.; Lew, H. Human umbilical cord blood mononuclear cells and chorionic plate-derived mesenchymal stem cells promote axon survival in a rat model of optic nerve crush injury. *Int. J. Mol. Med.* **2016**, *37*, 1170–1180. [[CrossRef](#)]
207. Zack, D.J. Neurotrophic Rescue of Photoreceptors. *Neuron* **2000**, *26*, 285–286. [[CrossRef](#)]
208. Slomiany, M.G.; Rosenzweig, S.A. Autocrine effects of IGF-I-induced VEGF and IGFBP-3 secretion in retinal pigment epithelial cell line ARPE-19. *Am. J. Physiol. Physiol.* **2004**, *287*, C746–C753. [[CrossRef](#)]
209. Gasperi, M.; Castellano, A.E. Growth hormone/insulin-like growth factor I axis in neurodegenerative diseases. *J. Endocrinol. Investig.* **2010**, *33*, 587–591. [[CrossRef](#)]
210. Na, L.; Xiao-Rong, L.; Jia-Qin, Y.; Li, N.; Li, X.; Yuan, J.-Q. Effects of bone-marrow mesenchymal stem cells transplanted into vitreous cavity of rat injured by ischemia/reperfusion. *Graefe's Arch. Clin. Exp. Ophthalmol.* **2008**, *247*, 503–514. [[CrossRef](#)]
211. Mead, B.; Hill, L.J.; Blanch, R.J.; Ward, K.; Logan, A.; Berry, M.; Leadbeater, W.; Scheven, B.A. Mesenchymal stromal cell-mediated neuroprotection and functional preservation of retinal ganglion cells in a rodent model of glaucoma. *Cytotherapy* **2016**, *18*, 487–496. [[CrossRef](#)]
212. Islam, M.N.; Das, S.R.; Emin, M.T.; Wei, M.; Sun, L.; Westphalen, K.; Rowlands, D.J.; Quadri, S.K.; Bhattacharya, S.; Bhattacharya, J. Mitochondrial transfer from bone-marrow-derived stromal cells to pulmonary alveoli protects against acute lung injury. *Nat. Med.* **2012**, *18*, 759–765. [[CrossRef](#)] [[PubMed](#)]
213. Drago, D.; Cossetti, C.; Iraci, N.; Gaude, E.; Musco, G.; Bachi, A.; Pluchino, S. The stem cell secretome and its role in brain repair. *Biochimie* **2013**, *95*, 2271–2285. [[CrossRef](#)] [[PubMed](#)]
214. Yin, L.; Liu, X.; Shi, Y.; Ocansey, D.K.W.; Hu, Y.; Li, X.; Zhang, C.; Xu, W.; Qian, H. Therapeutic Advances of Stem Cell-Derived Extracellular Vesicles in Regenerative Medicine. *Cells* **2020**, *9*, 707. [[CrossRef](#)] [[PubMed](#)]

