

The clinical significance of apolipoprotein L1 in head and neck squamous cell carcinoma

FENG ZHONG^{1*}, HUI-PING LU^{2*}, GANG CHEN², YI-WU DANG², XIAO-GUOHUI ZHANG², YAO LIANG², MING-XUAN LI², GUO-SHENG LI², XIAO-YI CHEN², YU-XUAN YAO², YONG-YING QIN², MIAO MO³, KAI-LANG ZHANG³, HUA DING³, ZHI-GUANG HUANG² and ZHU-XIN WEI³

¹Department of Pathology, Hengxian People's Hospital, Nanning, Guangxi Zhuang Autonomous Region 530300; Departments of ²Pathology and ³Radiotherapy, First Affiliated Hospital of Guangxi Medical University, Nanning, Guangxi Zhuang Autonomous Region 530021, P.R. China

Received October 10, 2019; Accepted August 18, 2020

DOI: 10.3892/ol.2020.12240

Abstract. Approximately 500,000 new head and neck squamous cell carcinoma (HNSCC) cases are detected every year around the world, and its incidence ranks sixth among all cancer types globally. Among these cases, oral squamous cell carcinoma (OSCC) and laryngeal squamous cell carcinoma (LSCC) are HNSCC subtypes with high incidence rates, especially in China. The present study examines the association between the apolipoprotein L1 (APOL1) mRNA and protein expression and clinical parameters in HNSCC. The two most common types (oral and larynx) of HNSCC were selected for subgroup analyses. Immunohistochemistry (IHC) was used to detect APOL1 protein expression levels in HNSCC clinical specimens. It was demonstrated that APOL1 protein expression in 221 cases of HNSCC was higher compared with that in normal tissues. Consistent upregulation of APOL1 protein was also found in subgroups of OSCC and LSCC. Through mining the ArrayExpress, The Cancer Genome Atlas and the Gene Expression Omnibus databases, microarrays and RNA sequencing data for HNSCC were retrieved, which were used to analyze *APOL1* mRNA expression levels. The results showed that *APOL1* expression was higher in both OSCC and LSCC subtypes, as well as in HNSCC, compared with that in

non-cancerous squamous epithelium. The summary receiver operating characteristic analysis showed that APOL1 had potential as a diagnostic biomarker for HNSCC, OSCC and LSCC. Thus, upregulation of APOL1 may contribute to the tumorigenesis of HNSCC.

Introduction

Head and neck squamous cell carcinoma (HNSCC), representing a group of tumors in the larynx, pharynx and oral cavity, is the sixth most common cancer in the world, with ~500,000 new cases worldwide each year (1,2). Among these cases, oral squamous cell carcinoma (OSCC) and laryngeal squamous cell carcinoma (LSCC) have a high incidence, especially in China (3,4), exhibiting high morbidity and mortality rates (5). According to GLOBOCAN 2012, the incidence and mortality rate of laryngeal cancer in China was 1.1/100,000 and 0.7/100,000, compared with the global incidence and mortality rate of which was 2.1/100,000 and 1.1/100,000, respectively (6). Oral cancer was also reported to be the 11th most common malignancy in the world in 2017 (7,8). HNSCC is associated with smoking and alcohol abuse (9), and it is also linked to infection with the human papillomavirus (10). In the occurrence and development of HNSCC, epigenetic events play an important role, including DNA methylation, post-translational covalent modification of histones, chromatin remodeling and the effects of non-coding RNA (11-14). Currently, an increasing number of splicing patterns have been found, such as the splicing variants of laminin subunit $\alpha 3$ (LAMA3), dystonin (DST), dedicator of cytokinesis (DOCK5), lysyl oxidase-like 2 (LOXL2) and gelsolin (GSN), and some studies have shown that these splicing variants can be used as cancer markers and potential therapeutic targets (15-18). Some of these variants could even become novel antigens for specific targeted therapy of HNSCC, such as the splicing variant of GSN, which was reported to be able to serve as a biomarker of HNSCC and a neoantigen for HNSCC treatment (18). In addition, HNSCC is characterized by clinical heterogeneity (19). For instance, patients with recurrent and/or metastatic HNSCC can be treated with cetuximab, an anti-EGFR antibody, but only ~13% of patients

Correspondence to: Dr Zhi-guang Huang, Department of Pathology, First Affiliated Hospital of Guangxi Medical University, 6 Shuangyong Road, Nanning, Guangxi Zhuang Autonomous Region 530021, P.R. China
E-mail: huangzhiguang@gxmu.edu.cn

Dr Zhu-xin Wei, Department of Radiotherapy, First Affiliated Hospital of Guangxi Medical University, 6 Shuangyong Road, Nanning, Guangxi Zhuang Autonomous Region 530021, P.R. China
E-mail: weizhuxin@stu.gxmu.edu.cn

*Contributed equally

Key words: apolipoprotein L1, head and neck squamous cell carcinoma, subgroups, clinical significance

with metastasis respond to this therapy (20). In recent years, immune checkpoint inhibitors (ICIs), such as nivolumab and pembrolizumab, have shown certain potential in the treatment of HNSCC (21,22). However, primary resistance to ICIs emerges in the majority of patients, and the benefits of this therapy is therefore suboptimal (23) compared with the anti-programmed death-1 monoclonal antibody (24,25). Therefore, it is particularly important to identify novel predictive biomarkers to improve the screening of patients who can benefit from ICI treatment. At present, more and more evidence has shown that the progression and metastasis of HNSCC are associated with polygenic changes (26,27); thus, it is important to improve our understanding of the mechanisms underlying the pathogenesis of HNSCC to aid the identification of novel biomarkers.

Apolipoprotein L1 (APOL1) is located at chromosome 22q12.3 and *APOL1* gene encodes a trypanolytic factor that dissolves pathogenic *Trypanosoma brucei* subspecies in humans and gorillas (28). Other studies have shown a link between non-diabetic nephropathy and variations in the *APOL1* gene (29,30), which are also associated with atherosclerosis (31). *APOL1* is one of six genes of the *APOL* gene family, which are a set of genomic hotspots for various diseases (32), including schizophrenia, cancer and chronic kidney disease (33,34). The *APOL* gene family is associated with programmed cell death and mainly encodes proteins to initiate apoptosis or autophagic death by increasing levels of free radicals, aggregating macromolecules, and inducing DNA damage and metabolic defects (35). Therefore, protein damage caused by apoptosis and autophagy is associated with the pathogenesis of several cancer types (36,37). However, there is no relevant literature to report the expression of *APOL1* and its clinical significance in HNSCC, to the best of our knowledge.

By mining the high-throughput data from ArrayExpress, Gene Expression Omnibus (GEO), The Cancer Genome Atlas (TCGA), Human Protein Atlas (HPA), as well as using immunohistochemistry (IHC), the present study examined the associations between *APOL1* mRNA and protein expression in HNSCC and related clinical parameters and prognoses. The two most common sites (oral and larynx) of HNSCC were selected for subgroup analyses (Fig. 1). Nasopharyngeal carcinoma was excluded from subgroup analysis due to its unique pathogenesis (38). The present results may improve our understanding of the association between HNSCC and *APOL1* that has hitherto been lacking in oncology, and suggested that *APOL1* is a promising biomarker that deserves further study.

Materials and methods

Study design. At the mRNA level, datasets, including 16,510 individual data points after removing duplicates, were obtained through TCGA (<https://cancergenome.nih.gov/>), GEO (<http://www.ncbi.nlm.nih.gov/geo/>), and ArrayExpress (<http://www.ebi.ac.uk/arrayexpress/>) databases. In total, 39 studies were used for the final analysis, which were divided into two subgroups: OSCC and LSCC, such as the datasets of GSE10121 (39), GSE13601 (40), GSE51985 (41). The control group included negative marginal tissue with squamous cells, healthy nasopharyngeal tissue and the epithelial tonsil samples. At the protein level, images of IHC staining results

were obtained from the HPA (42-44). In-house validation with IHC was also used to verify the *APOL1* mRNA expression data collected from the First Affiliated Hospital of Guangxi Medical University (Nanning, China). The inclusion criteria were: i) None of patients had received preoperative chemoradiotherapy and ii) all of the operative tissues were obtained during resection. The study exclusion criteria were as follows: i) Multiple primary tumors and ii) lack of clinicopathological data.

IHC. The HPA, through the use of IHC techniques, aims to provide information on the distribution of various kinds of human proteins in cells and tissues and the staining results of images that are fully representative (42-44). Thus, this database was used to collect images of IHC staining results for HNSCC. After obtaining approval from The Ethics Committee of the First Affiliated Hospital of Guangxi Medical University (Nanning, China), as well as patient written consent, HNSCC, non-tumor tissues and corresponding clinical information were collected at the hospital between January 2017 and September 2018. IHC was then performed on these tissues, including 221 HNSCC and 24 non-tumor squamous epithelial tissues from 13 cases of the oral cavity, five of the larynx and six of the nasopharynx. All clinicopathological features were obtained to analyze the influence of the *APOL1* protein expression on the occurrence and development of HNSCC.

Pathological sectioning was performed on both the HNSCC and non-cancerous tissues, which were then fixed in 4% formaldehyde solution for 24 h at room temperature, followed by being dehydrated with conventional gradient ethanol (80, 90, 95 and 100%) and embedded. Paraffin-embedded HNSCC and non-cancerous tissues were cut into 4- μ m sections and heated at 75°C for 2 h. The sections were deparaffined with xylene and rehydrated with conventional gradient ethanol (100, 95, 85, 75 and 50%). Then these sections were washed twice under running water and boiled in EDTA antigen Retrieval Solution (pH=9.0) for 2.5 min in a pressure cooker for antigen retrieval. After that, the sections were immersed in 3% hydrogen peroxide for 5 min to block endogenous peroxidase activity and incubated with diluted anti-*APOL1* antibody (1:100, cat. no. CL0171; Abcam) for 90 min at 37°C and with a secondary antibody for 25 min at room temperature. After the sections were incubated with DAB staining for 5 min at room temperature and counterstained with hematoxylin for 30 sec at room temperature. Finally, these sections were dehydrated with gradient ethanol, cleared by xylene, and sealed with resin. Images (magnification, x100 and x200) were captured using an optical microscope (Motic China Group Co., Ltd.). The score of the IHC staining results, including HPA and in-house IHC, was generated from the product of the proportion of stained cancerous cells among all cells (0, $\leq 5\%$; 1, 6-25%; 2, 26-50%; 3, 51-75%; 4, $>75\%$) and the staining degree of the positive cancerous cells (0, no staining; 1, light staining; 2, moderate staining; 3, strong staining), which was assessed manually by two independent pathologists.

Microarray and RNA-sequencing data from TCGA, GEO and ArrayExpress databases. By mining TCGA, GEO and ArrayExpress databases, microarrays and RNA-sequencing (RNA-seq) data regarding HNSCC were retrieved. The search

Table I. Basic information of the 39 microarrays of APOL1 expression profiling involved in the present study.

ID	Year	Tissue type	Number of samples, n		APOL1 expression, mean \pm SD		P-value
			HNSCC	Normal	HNSCC	Normal	
GSE10121	2008	OSCC	32	6	1.774 \pm 1.490	-1.083 \pm 0.423	<0.001
GSE13601	2008	OSCC	31	26	7.917 \pm 1.284	5.466 \pm 1.271	<0.001
GSE19089	2009	OSCC	3	3	5.757 \pm 0.140	5.665 \pm 0.128	0.449
GSE23558	2011	OSCC	27	5	2.107 \pm 1.454	0.022 \pm 1.329	0.006
GSE25099	2011	OSCC	57	22	7.938 \pm 0.870	5.985 \pm 0.610	<0.001
GSE30784	2011	OSCC	167	45	8.522 \pm 1.349	5.970 \pm 0.951	<0.001
GSE31056	2011	OSCC	23	73	8.267 \pm 1.058	6.385 \pm 1.004	<0.001
GSE31853	2011	OSCC	8	3	6.027 \pm 0.948	3.933 \pm 1.275	0.015
GSE34106	2012	OSCC	28	15	6.691 \pm 0.600	5.992 \pm 0.367	<0.001
GSE3524	2005	OSCC	16	4	0.054 \pm 1.165	-1.842 \pm 1.222	0.010
GSE36090	2012	OSCC	10	3	2.083 \pm 1.861	0.170 \pm 0.816	0.119
GSE37991	2013	OSCC	40	40	7.546 \pm 0.334	8.205 \pm 0.566	<0.001
GSE55550	2014	OSCC	139	16	0.191 \pm 0.921	-0.290 \pm 0.381	<0.001
GSE56532	2014	OSCC	10	6	10.080 \pm 1.340	7.661 \pm 0.735	0.001
GSE6631	2007	OSCC	22	22	6.176 \pm 0.680	5.539 \pm 0.411	0.001
GSE74530	2017	OSCC	6	6	7.033 \pm 1.548	4.744 \pm 0.268	0.015
GSE9844	2008	OSCC	26	12	7.701 \pm 1.217	6.053 \pm 0.533	<0.001
GSE55549	2014	OSCC	8	4	0.158 \pm 0.666	-0.268 \pm 0.424	0.276
GSE78060	2017	OSCC	26	4	10.801 \pm 1.437	7.139 \pm 2.094	<0.001
GSE75539	2016	OSCC	7	8	6.43 \pm 0.258	6.143 \pm 0.181	0.026
GSE75538	2016	OSCC	14	14	6.767 \pm 1.161	6.238 \pm 0.331	0.113
GSE12452	2008	NPC	31	10	8.342 \pm 0.618	8.394 \pm 0.437	0.808
GSE53819	2014	NPC	18	18	12.169 \pm 0.541	11.509 \pm 0.816	0.007
GSE64634	2017	NPC	12	4	7.749 \pm 1.015	7.833 \pm 0.471	0.877
GSE51985	2013	LSCC	10	10	31.337 \pm 43.389	18.568 \pm 26.459	0.437
GSE59102	2014	LSCC	29	13	11.867 \pm 1.163	10.753 \pm 0.879	0.004
GSE29330	2014	LSCC	13	5	8.322 \pm 1.548	6.486 \pm 0.619	0.002
GSE84957	2016	LSCC	9	9	13.326 \pm 0.649	12.539 \pm 0.771	0.032
GSE10774	2008	Unclassified HNSCC	10	4	-0.812 \pm 0.853	-1.780 \pm 0.366	0.012
GSE13397	2009	Unclassified HNSCC	8	8	13.087 \pm 0.617	11.802 \pm 0.538	<0.001
GSE13398	2009	Unclassified HNSCC	8	8	1.484 \pm 0.604	0.363 \pm 0.376	<0.001
GSE33205	2013	Unclassified HNSCC	44	25	7.032 \pm 1.087	5.885 \pm 0.347	<0.001
GSE55546	2014	Unclassified HNSCC	12	4	0.395 \pm 0.947	-0.358 \pm 0.414	0.153
GSE58911	2014	Unclassified HNSCC	15	15	9.085 \pm 1.111	8.151 \pm 0.732	0.011
GSE83519	2017	Unclassified HNSCC	22	22	2.672 \pm 0.236	2.781 \pm 0.180	0.090
GSE107591	2017	Unclassified HNSCC	24	23	8.602 \pm 1.419	7.2 \pm 0.886	<0.001
GSE39400	2012	Unclassified HNSCC	28	11	6.585 \pm 0.287	6.365 \pm 0.235	0.030
E-MTAB-1516	NA	Unclassified HNSCC	16	19	-5.366 \pm 4.091	-6.925 \pm 3.796	0.251
TCGA	NA	Unclassified HNSCC	502	44	4.383 \pm 0.106	4.257 \pm 0.104	<0.001

HNSCC, head and neck squamous cell carcinoma; APOL1, apolipoprotein L1; SD, standard deviation; OSCC, oral squamous cell carcinoma; NPC, nasopharyngeal squamous cell carcinoma; LSCC, laryngeal squamous cell carcinoma; TCGA, The Cancer Genome Atlas; NA, not available.

strategy was (head and neck OR HNSCC OR laryngeal OR nasopharyngeal OR pharyngeal OR oral OR LSCC OR NPC OR OSCC) AND (squamous cell carcinoma OR carcinoma

OR tumor OR cancer OR neoplas* OR malignan*). The inclusion criteria for the microarray and RNA-seq data were as follows: i) Cancer samples came from HNSCC tissues; ii) the

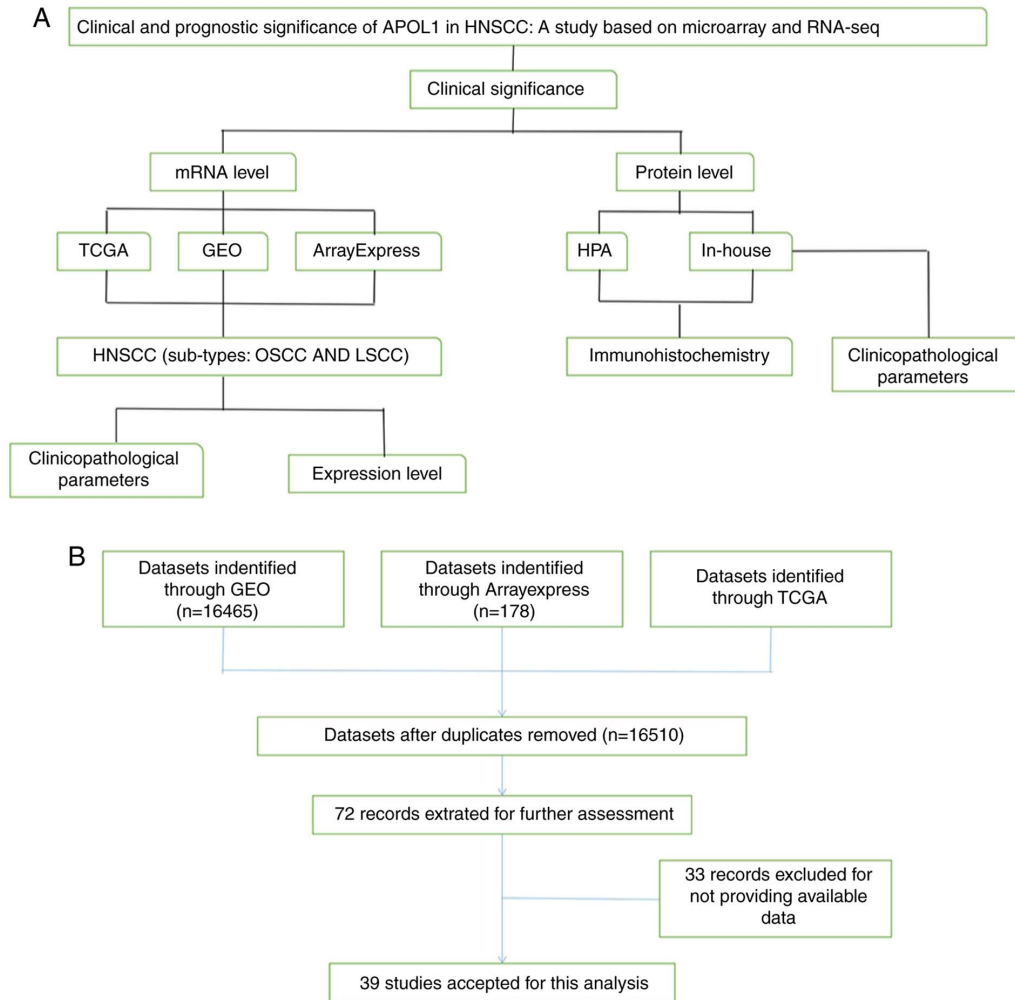


Figure 1. Design and retrieval flow chart. (A) Flow chart of the design of the present study and (B) flow chart of the study search and selection proceed. APOL1, apolipoprotein L1; HNSCC, head and neck squamous cell carcinoma; OSCC, oral squamous cell carcinoma, LSCC, laryngeal squamous cell carcinoma; TCGA, The Cancer Genome Atlas; GEO, Gene Expression Omnibus; HPA, Human Protein Atlas; RNA-seq; RNA sequencing.

species was *Homo sapien*; iii) the included chips contained the expression APOL1; iv) the tissue sample sources were head and neck tissues and v) chip sequencing or other high-throughput detection methods were used. The downloaded data were normalized and \log_2 transformed. Basic information of the 39 microarrays of APOL1 expression profiling involved in the present study is summarized at Table I. There are 21 microarrays with APOL1 expression for OSCC, 4 for LSCC, 3 for NPC and 11 for unclassified HNSCC tissues. The mRNA expression of APOL1 in HNSCC and normal tissues were obtained from above databases.

Clinical parameter data of TCGA, GEO and ArrayExpress databases. Meanwhile, the information of corresponding clinicopathological parameters, such as sex, age, grade and Tumor-Node-Metastasis (TNM) stage (45), were extracted for further analysis and comparison. Kaplan-Meier estimator with log-rank tests were also used on the RNA-seq data to show the prognostic capability of APOL1 for HNSCC.

Statistical analysis. The appropriate statistical methods were applied to clarify the APOL1 expression in HNSCC and its two subgroups (OSCC and LSCC). SPSS 22.0 (IBM Corp)

was used to carry out unpaired t-tests to investigate the differences in the APOL1 mRNA expression between tumor and normal tissues based on TCGA, GEO and ArrayExpress databases. Scatter diagrams and receiver operating characteristic (ROC) curves were drawn using GraphPad Prism version 7.0 (GraphPad Software). In addition, the summary receiver operating characteristic (sROC) curves were drawn using Stata 12 (StataCorp LLC). These were used to evaluate the capability of APOL1 to diagnose tumors, the accuracy of which was confirmed by the area under the curve (AUC). Comparing the APOL1 expression in tumor tissues with that in non-tumor tissues, standard mean differences (SMDs) and 95% confidence intervals (CIs) were used. The funnel plot and Begg's test were used to examine whether there was publication bias. χ^2 and Fisher's exact tests were used to compare the IHC staining scores of APOL1 in HNSCC with those in the normal tissues and analyze the association between the clinicopathological parameters and expression of APOL1 proteins for 135 patients with HNSCC. χ^2 tests were used when all theoretical frequency $T \geq 5$ and total sample size $n \geq 40$, while Fisher's test suitable for sample size $n < 40$ or theoretical frequency $T < 1$. Fagan's Tests were used to demonstrate the relationship between the former probability, the latter probability,

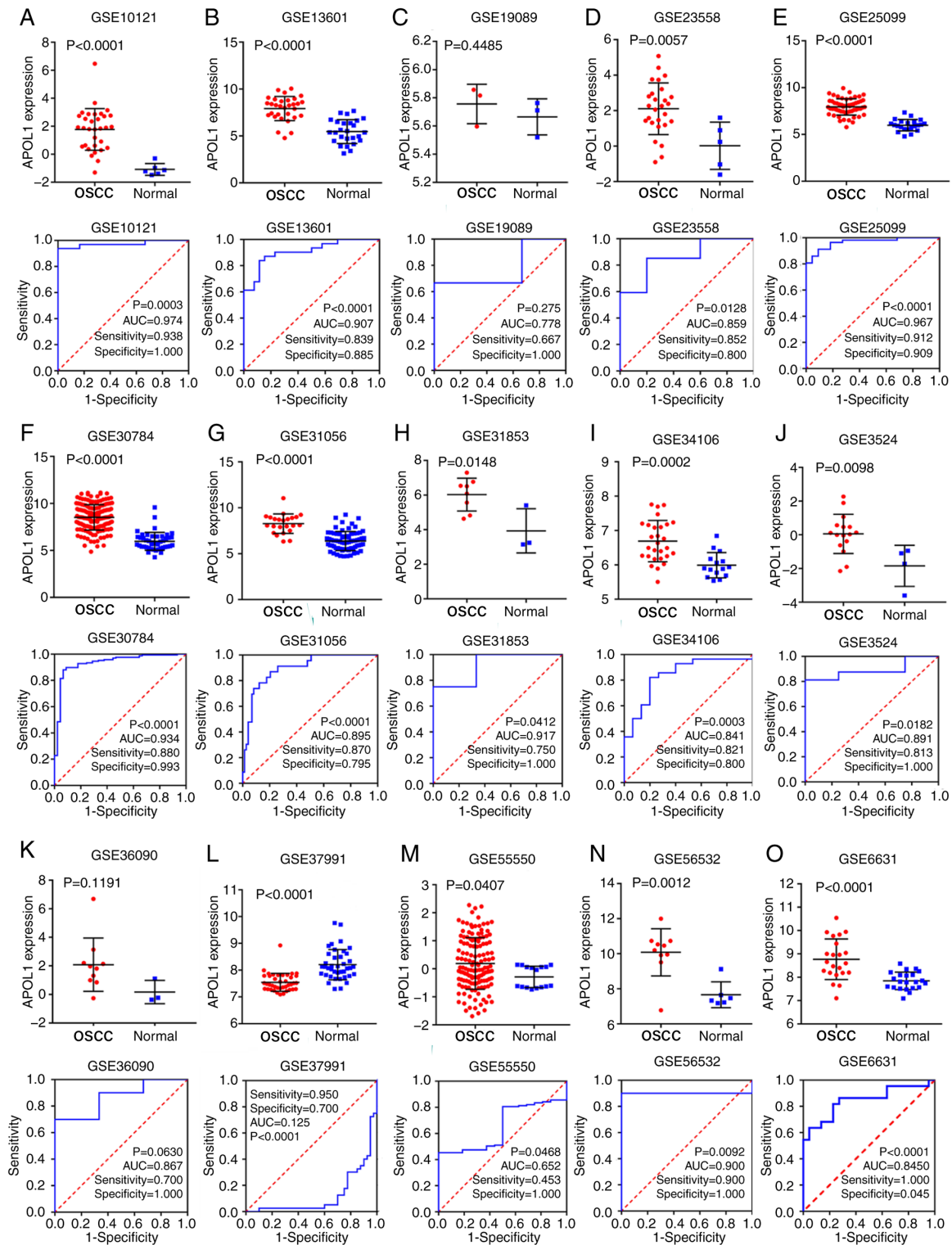


Figure 2. mRNA APOL1 expression in OSCC tissue and the corresponding ROC curves. (A-O) Expression data of APOL1 and corresponding ROC curves in OSCC tissues in 15 microarrays from Gene Expression Omnibus datasets. APOL1, apolipoprotein L1; ROC, receiver operating characteristic; OSCC, oral squamous cell carcinoma; AUC, area under the curve.

the positive likelihood ratio and the negative likelihood ratio by taking APOL1 expression value as the diagnostic method and comparing with the gold standard for cancer diagnosis. If the heterogeneity test was $P < 0.05$ or $I^2 > 50\%$, meaning the existence of heterogeneity, the random effects model was used. If the contrary was true, the fixed effects model was used. Some microarrays were excluded according to the following

criteria: i) Microarrays with low expression, ii) microarrays with large confidence intervals (CIs) and iii) microarrays with no statistical significance. Meanwhile, Stata 12 (StataCorp) was also used to construct the forest plots, sensitivity analysis and to determine the positive or negative likelihood ratio and publication bias. $P < 0.05$ was considered to indicate a statistically significant difference.

Results

APOL1 protein expression in OSCC detected by IHC and its association with clinicopathological parameters. In total, 135 cases of OSCC and 13 cases of normal oral tissues in-house were used to analyze the change of APOL1 expression in OSCC samples. Of the 135 cases with OSCC tissue samples, APOL1 was positively expressed in 61 cases (45.2%). Meanwhile, no positive results were observed in the 13 cases of non-cancerous oral tissues (Table II). It was demonstrated that the difference of APOL1 protein was statistically significant ($P=0.001$; Table II), which indicated a higher expression of APOL1 in OSCC tissues compared with in normal tissues. The clinicopathological features of the 135 OSCC are summarized in Table II. By analyzing the association between the expression of APOL1 and clinicopathological parameters in OSCC, it was revealed that there was a significant association between APOL1 and sex ($P=0.015$, Table II). No marked associations were observed between APOL1 expression and other clinical parameters. Thus, APOL1 protein expression was upregulated in OSCC tissues as compared to non-cancerous oral controls.

Analysis of APOL1 mRNA expression in OSCC. TCGA, GEO and ArrayExpress databases were searched and 21 microarrays containing APOL1 expression profile were performed with OSCC tissues (Table I). Of the 21 microarrays (Fig. 2A-O and 3A-F), 20 showed that APOL1 was highly expressed in OSCC tissues compared with in normal tissues. Statistically significant differences were found in 17 out of 21 microarrays, while four microarrays (GSE19089, GSE36090, GSE55549 and GSE75538) had no statistical significance in the change of expression level of APOL1 between the OSCC tissues and control group. Analysis revealed that the overall SMD was 1.38 (95% CI, 0.88-1.88) (Fig. 4A). In other words, the expression of APOL1 was stronger in OSCC tissues compared with in normal tissues because the SMD > 0 and 0 were not included in the 95% CI (Fig. 4A). The heterogeneity test was applied, and the outcome demonstrated that the analysis was heterogeneous via the random effects model ($P_{\text{heterogeneity}} < 0.0001$; $I^2 = 88.4\%$; Fig. 4A). The sensitivity analysis was then conducted (Fig. 4B). After removing five microarrays (GSE25099, GSE30784, GSE31056, GSE37991 and GSE55550), the SMD was 1.46 (95% CI, 1.21-1.69); no significant heterogeneity was found (the fixed effects model: $P_{\text{heterogeneity}} = 0.362$; $I^2 = 8.0\%$; Fig. 4C). According to the funnel plot and the results of Begg's test ($P = 0.608$; Fig. 4D), no publication bias was observed. Thus, the mRNA expression of APOL1 in OSCC tissues was higher than in normal tissues, which was consistent with the protein level.

To reveal the capacity of the APOL1 expression to diagnose patients with OSCC, the sROC was used to analyze the AUC and 95% CI. As Fig. 5A shows, the AUC of APOL1 was 0.93 (95% CI, 0.79-0.90). The pre-test probability, post-test probability positive and post-test probability negative were 20, 63 and 4%, respectively (Fig. 5B), with a sensitivity of 0.85 (95% CI, 0.79-0.90) and a specificity of 0.88 (95% CI, 0.81-0.92) (Fig. 5C and D, respectively). Hence, the results indicated that the upregulation of APOL1 mRNA has potential as a marker for differentiating OSCC from non-cancerous oral epithelium.

Table II. The clinicopathological parameters and expression of APOL1 protein for 135 patients with oral squamous cell carcinoma.

Clinicopathological parameter	APOL1 expression, n		P-value
	High	Low	
Cancerous cases vs. non-cancerous cases			0.001
Cancerous cases	61	74	
Non-cancerous cases	0	13	
Sex			
Male	53	51	0.015
Female	8	23	
Age, years			
≥ 60	24	31	0.728
< 60	37	42	
Grade			
1-2	25	35	0.491
3-4	36	39	
Stage			
I-II	25	35	0.491
III-IV	36	39	
Pathological T			
T1-T2	43	15	0.840
T3-T4	59	18	
Pathological N			
N0	34	45	0.601
N1	27	29	
Pathological M			
M0	61	73	0.456
M1	0	1	

APOL1, apolipoprotein L1; T, tumor; N, node; M, metastasis; Grade, clinical pathological grade; Stage, TNM stage.

Association between APOL1 protein expression and the clinicopathologic parameters of LSCC. A total of 49 cases of LSCC tissues and 5 cases of normal laryngeal tissues were collected in-house. Of the 49 LSCC tissues collected, 45 were positive for APOL1, accounting for 91.8% (Table III). Meanwhile, all normal laryngeal tissues showed a low expression. Statistical calculation revealed that APOL1 levels were higher in LSCC tissues compared with normal tissues ($P < 0.0001$; Table III). The association between APOL1 expression levels and clinicopathological parameters were analyzed but no significant relationships were observed (Table III). So, the expression of APOL1 protein was increased in LSCC tissues as compared to non-cancerous controls.

Analysis of mRNA expression of APOL1 in LSCC. Through deep mining the GEO, TCGA and ArrayExpress, finally the number of microarrays of APOL1 expression in LSCC and normal tissues was four (Table I). All of them showed that APOL1 expression was higher in LSCC tissues compared

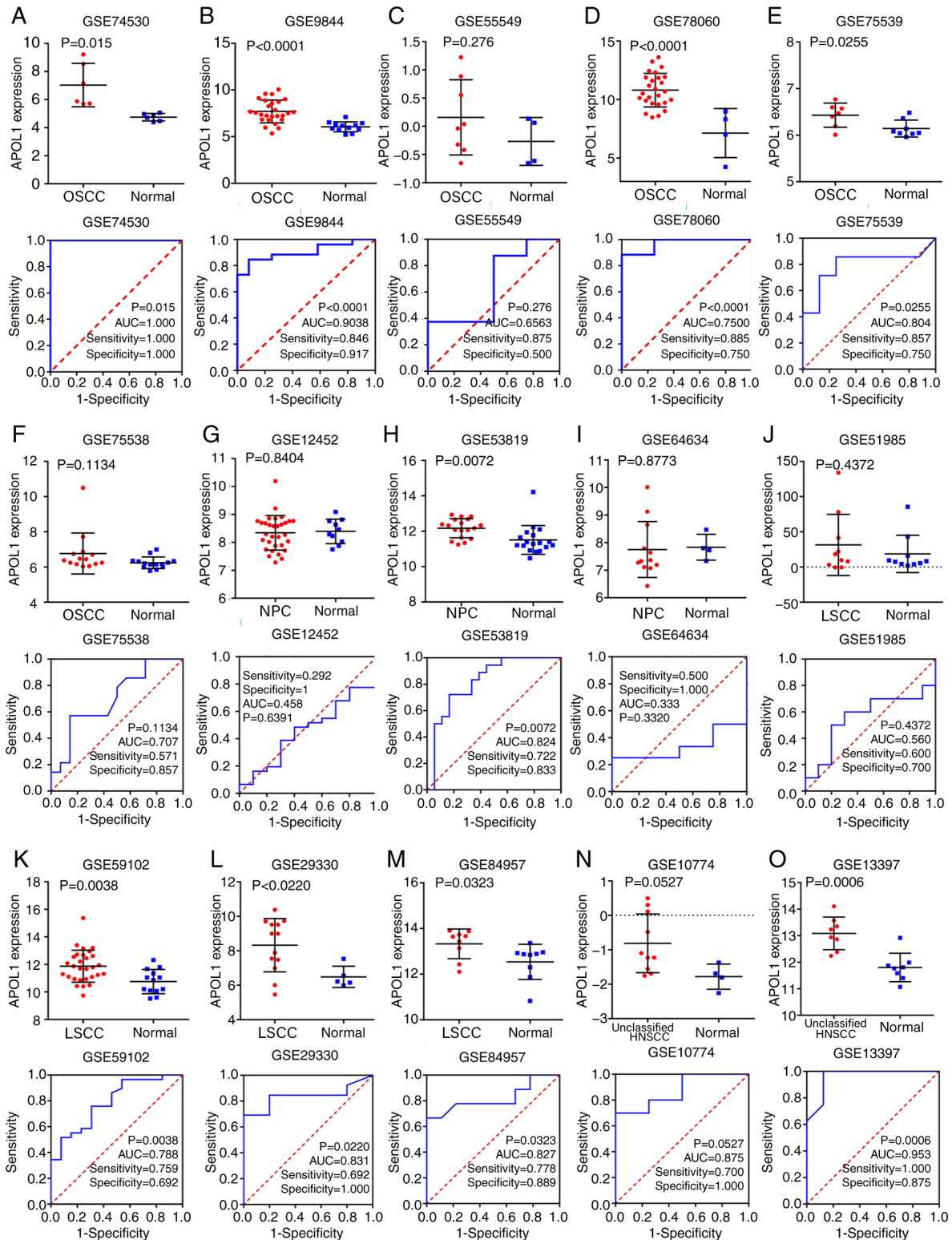


Figure 3. mRNA APOL1 expression in HNSCC and normal tissues. (A-F) Expression data of APOL1 and corresponding ROC curves in OSCC tissues in six microarrays from GEO datasets. (G-I) Expression data of APOL1 and corresponding ROC curves in NPC tissues in three microarrays from GEO datasets. (J-M) Expression data of APOL1 and corresponding ROC curves in LSCC tissues in four microarrays from GEO datasets. (N and O) Expression data of APOL1 and corresponding ROC curves in unclassified subgroups of HNSCC in two microarrays from GEO datasets. APOL1, apolipoprotein L1; ROC, receiver operating characteristic; HNSCC, head and neck squamous cell carcinoma; OSCC, oral squamous cell carcinoma; LSCC, laryngeal squamous cell carcinoma; NPC, nasopharyngeal carcinoma; AUC, area under the curve.

with in normal tissues (Fig. 3J-M). Besides, three out of four microarrays of LSCC showed that the differences were significant according to Table I. The SMD was 0.92 (95% CI, 0.48-1.36) (Fig. 6A). As there was no obvious heterogeneity

($P_{\text{heterogeneity}}=0.512$; $I^2=0.0\%$, Fig. 6A), the fixed effects model was used. Similarly, according to the funnel plot and the results of Begg's test ($P=0.308$, Fig. 6B), no publication bias was observed for the analysis of APOL1 expression.

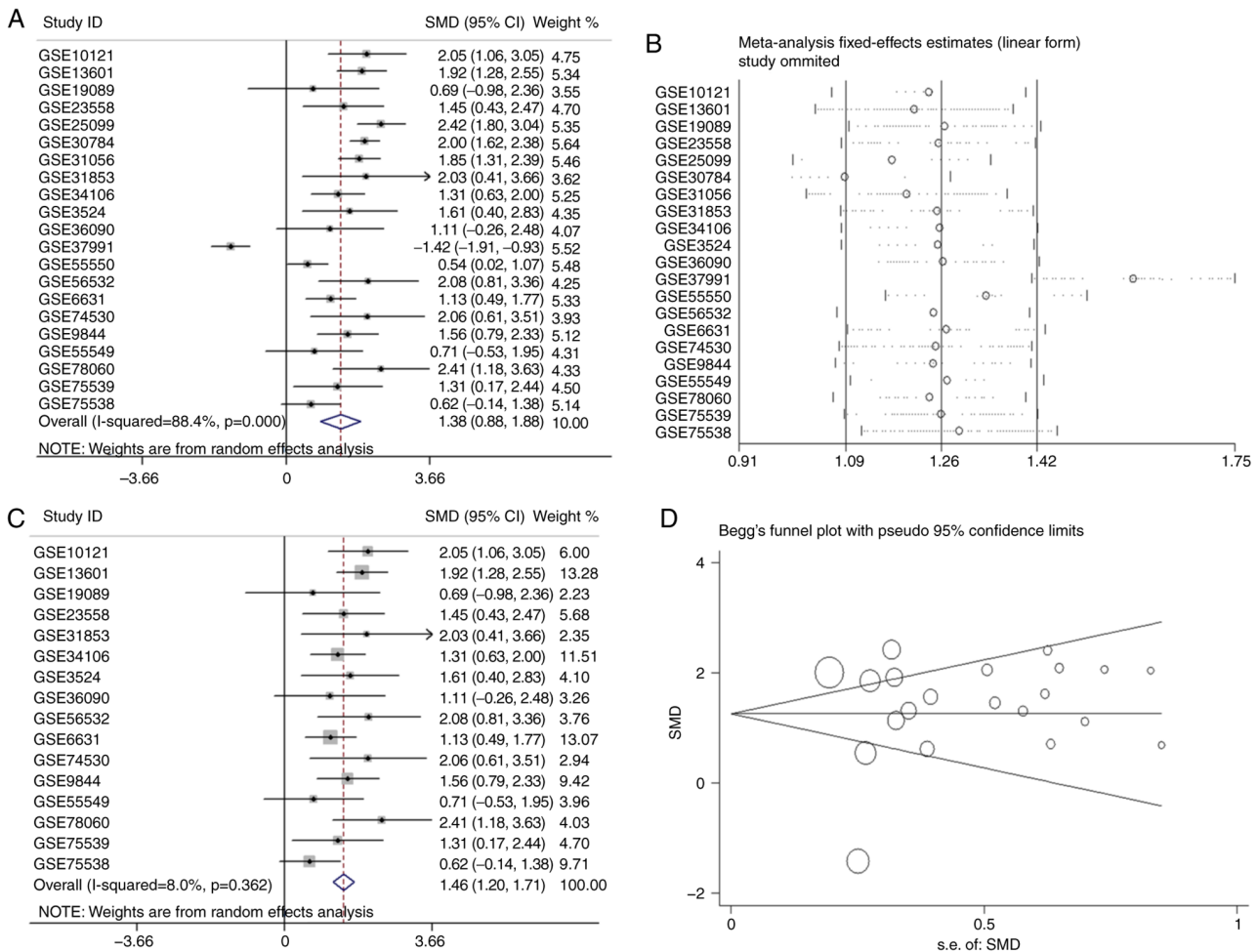


Figure 4. Forest plots and funnel plot of APOL1 expression between OSCC and non-tumor tissues. (A) Forest plots of studies evaluating standard mean difference of APOL1 between OSCC and non-tumor tissues based on GEO datasets. (B) Sensitivity analysis and the forest plot after sensitivity analysis; sensitivity analysis of the expression levels of APOL1 in OSCC and non-tumor tissues based on GEO datasets. (C) Forest plots of APOL1 expression between OSCC and non-tumor tissues after removing the following studies: GSE25099, GSE30784, GSE31056, GSE37991 and GSE55550. (D) Funnel plot for publication bias test after analysis of the expression level of APOL1 in OSCC. The size represented by the Begg's plot circle is the weight of each data concentration. APOL1, apolipoprotein L1; OSCC, oral squamous cell carcinoma; GEO, Gene Expression Omnibus.

In addition, as shown in Fig. 7A, *APOL1* had a notable discriminatory capability for LSCC due to the AUC of the APOL1 upregulation being 0.82 (95% CI, 0.78-0.85). The pre-test probability, post-test probability positive, and post-test probability negative were 20, 45 and 8%, respectively (Fig. 7B), with the sensitivity being 0.72 (95% CI, 0.60-0.82) and the specificity 0.78 (95% CI, 0.62-0.89) (Fig. 7C and D, respectively). So it was shown that the mRNA expression of APOL1 in LSCC tissues was higher than in normal tissues, which was in line with the APOL1 protein level.

APOL1 protein level in HNSCC. Overall, the present study analyzed 221 cases of HNSCC (including OSCC, LSCC, NPC and some HNSCC without specified sites) and 24 cases of normal head and neck tissues in-house. So, the entire HNSCC group included the OSCC, LSCC, and non-classified HNSCC groups, which was analyzed as a whole in order to observe the association between the APOL1 and the entire HNSCC tissues in present study. The IHC results and the information of the patients in-house were also evaluated. Of the 221 cases, APOL1 was highly expressed in 126 (57%), whereas levels of APOL1 in the normal tissues showed lower expression. The

Fisher's exact test showed that the proportion of APOL1 in tumor tissues was significantly higher compared with in non-cancer tissues ($P < 0.0001$; Table IV). The HPA database was used to verify the expression of APOL1 (Fig. 8A-C). After analyzing the association between APOL1 expression and the clinical parameters, it was reported that there was a significant difference in terms of sex ($P = 0.004$), tumor pathological grade ($P < 0.0001$) and pathological T stage ($P = 0.019$) (Table IV). So the APOL1 protein level was generally upregulated in HNSCC tissues than normal tissues.

Clinical significance of APOL1 mRNA expression in HNSCC. In the present study, a total of 39 microarrays and RNA-seq data regarding HNSCC and normal tissues were analyzed. Among them, 21 OSCC and four LSCC microarrays were used for subgroup analysis as aforementioned. Three of the remaining microarrays were nasopharyngeal carcinoma (NPC), the pathogenesis of which is different from that of other HNSCCs (38), and 11 were not classified any of the HNSCC subgroups according to the TCGA, GEO and ArrayExpress databases; thus, these were grouped into the overall HNSCC group. The 39 studies are listed in Table I. Of the three

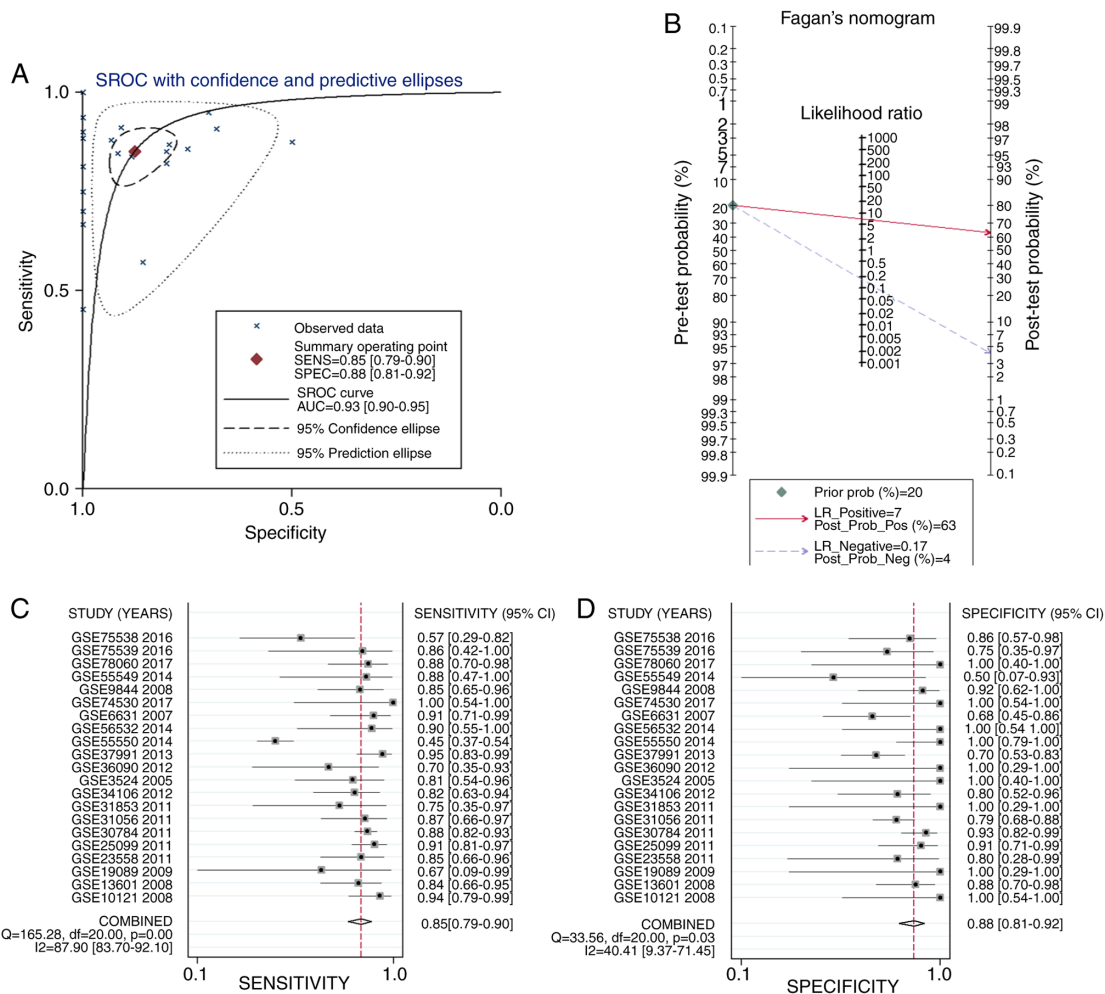


Figure 5. Analysis of the mRNA expression of APOL1 in OSCC. (A) sROC analysis of APOL1 for discriminating OSCC from normal tissues based on GEO datasets. (B) Prior probability and post-probability positive and negative of the included studies. The prior probability, post probability positive and negative reached 20, 63 and 4%, respectively. (C and D) Sensitivity and specificity values of the included studies. The sensitivity and specificity values of the included studies were 0.85 (95% CI, 0.79-0.90) and 0.88 (95% CI, 0.81-0.92), respectively. Oral squamous cell carcinoma (OSCC). APOL1, apolipoprotein L1; sROC, Summary receiver operating characteristic; LR, likelihood ratio; GEO, Gene Expression Omnibus; OSCC, oral squamous cell carcinoma; CI, confidence interval.

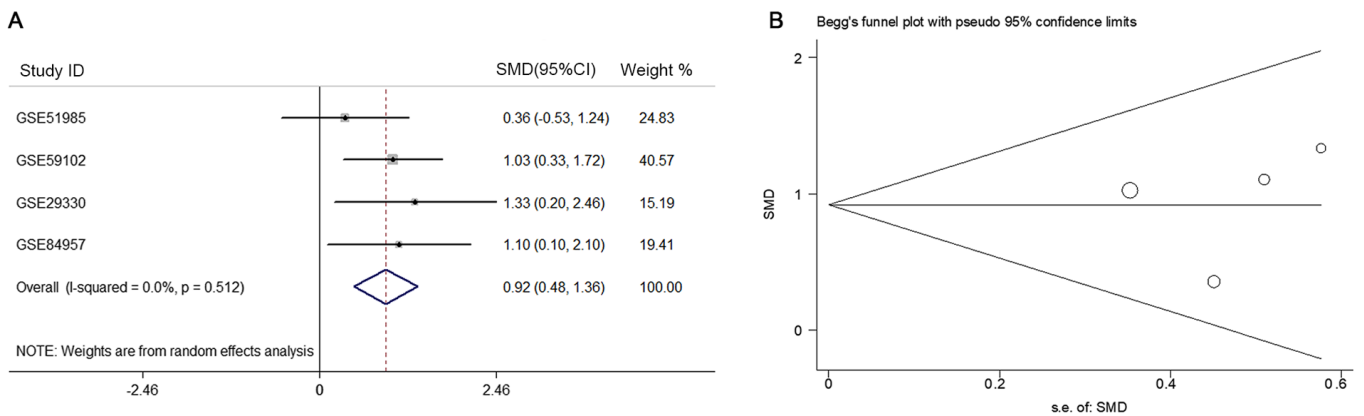


Figure 6. Analysis of the mRNA expression of APOL1 in LSCC. (A) Forest plots of studies evaluating standard mean difference of APOL1 between LSCC and non-tumor group. (B) Funnel plot for publication bias test after analysis of the expression level of APOL1 in LSCC, The size represented by the Begg's plot circle is the weight of each data concentration. APOL1, apolipoprotein L1; LSCC, laryngeal squamous cell carcinoma; GEO, Gene Expression Omnibus.

microarrays of APOL1 expression profiling in NPC tissues, one NPC microarray showed that the difference was significant (P=0.007) according to the Table I. And combining all of the

mentioned studies, it was reported that, in the 39 microarrays, the expression of APOL1 in HNSCC tissues was higher compared with that in non-cancerous tissues (Figs. 2, 3 and 9).

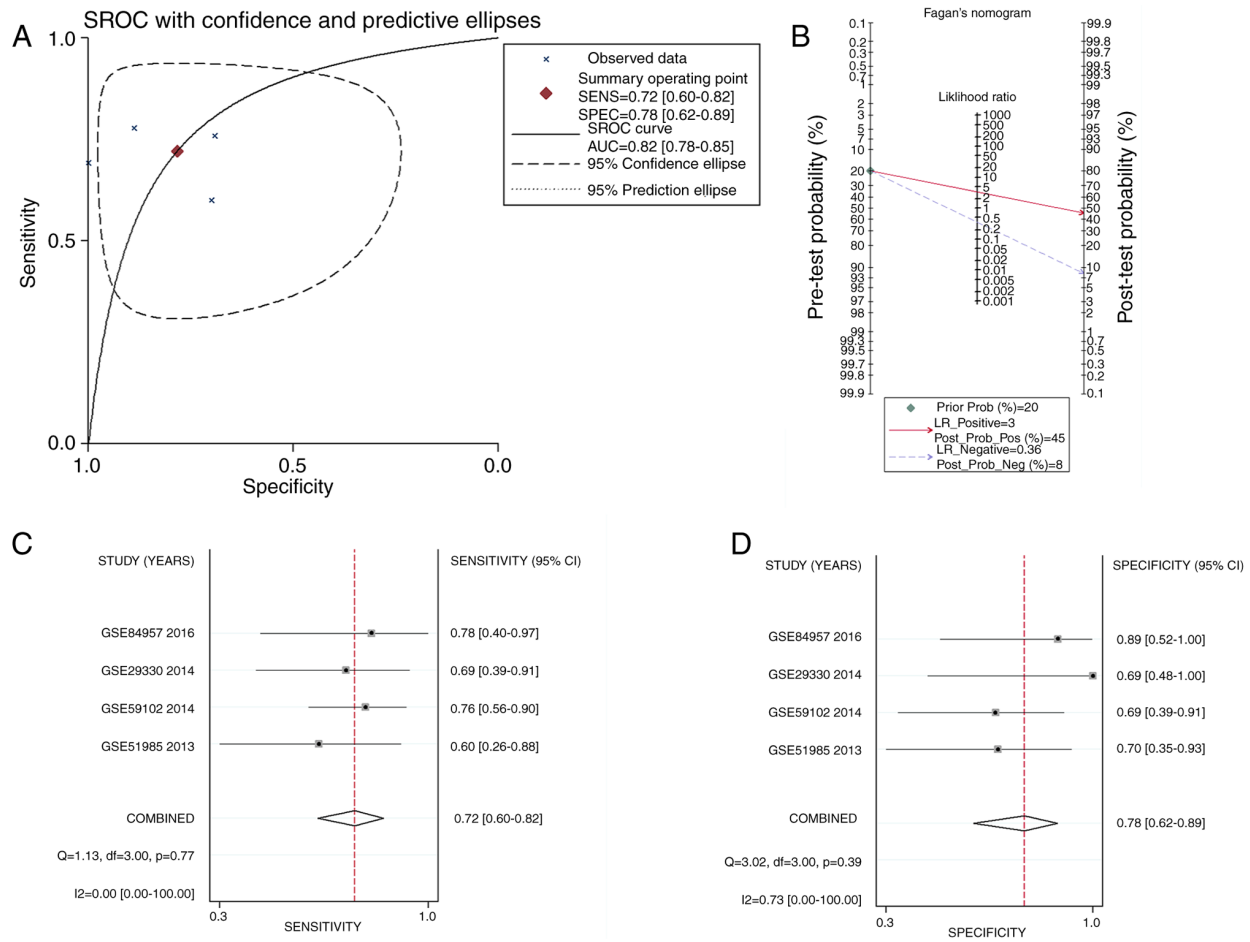


Figure 7. sROC curves analysis of APOL1 for discriminating LSCC from normal tissues, prior probability post-probability, positive and negative of the included studies and sensitivity and specificity values. (A) The sROC analysis of APOL1 for discriminating LSCC from normal tissues based on GEO datasets. (B) Prior probability and post-probability positive and negative of the included studies. The prior probability, post probability positive and negative reached 20, 45 and 8%, respectively. (C and D) Sensitivity and specificity values of the included studies. The sensitivity and specificity values of the included studies were 0.72 (95% CI, 0.60-0.82) and 0.78 (95% CI, 0.62-0.89), respectively. APOL1, apolipoprotein L1; GEO, Gene Expression Omnibus; LSCC, laryngeal squamous cell carcinoma; sROC, summary receiver operating characteristic; LR, likelihood ratio; CI, confidence interval.

This difference was statistically significant in 29 out of 39 microarrays ($P < 0.05$; Table I). However, in the remaining 10 microarrays (GSE19089, GSE55549, GSE75538, GSE12452, GSE64634, GSE51985, GSE55546, GSE83519, GSE36090 and E-MTAB-1516), there was no statistical significance in the APOL1 expression between the HNSCC and normal tissues. The SMD was 1.14 (95% CI, 0.83-1.44) (Fig. 10A), which confirmed that APOL1 expression was higher in HNSCC tissues compared with the corresponding control group. The heterogeneity test was applied, and the outcome demonstrated that the analysis was heterogeneous using the random effects model ($P_{\text{heterogeneity}} < 0.0001$; $I^2 = 83.7\%$; Fig. 10A). The sensitivity analysis was then conducted (Fig. 10B). To determine the datasets with heterogeneity, the 10 microarrays (GSE25099, GSE30784, GSE31056, GSE37991, GSE55550, GSE12452, GSE64634, GSE83519, E-MTAB-1516 and all TCGA datasets) were removed. After the removal of 10 microarrays, which had the potential to produce heterogeneity, the SMD was 1.28 (95% CI, 1.10-1.45) and we found no obvious heterogeneity among them (the fixed effects model: $P_{\text{heterogeneity}} = 0.317$; $I^2 = 9.7\%$; Fig. 10C). According to the funnel plot, the results of Begg's test ($P = 0.468$, Fig. 10D), no publication bias was identified. So it was

consistently shown that the expression of APOL1 mRNA in the HNSCC was higher than in the normal tissues.

sROC was used to analyze the value of APOL1 overexpression regarding the diagnostic potential of HNSCC (AUC, 0.90; 95% CI, 0.87-0.93; Fig. 11A). The pre-test probability, post-test probability positive and post-test probability negative were 20, 60 and 6%, respectively (Fig. 11B), with a sensitivity of 0.79 (95% CI, 0.73-0.84) and a specificity of 0.87 (95% CI, 0.81-0.91) (Fig. 11C and D, respectively), thereby indicating the notable discriminatory capability of high APOL1 level for differentiating HNSCC from non-cancerous lesions.

After analyzing the association between the expression of APOL1 and clinicopathological parameters in HNSCC, relevant clinical information from the chips included in the current study were extracted and SMD analysis was performed in terms of sex, age and pathological staging (Fig. 12A-C). However, only the results concerning age were statistically significant ($P < 0.0001$), and the expression of APOL1 in patients >60 years old was higher compared with that in patients <60 years old (Fig. 12B). Using the Kaplan-Meier estimator, it was revealed that there was no significant difference in terms of survival regarding APOL1 expression (Fig. 13).

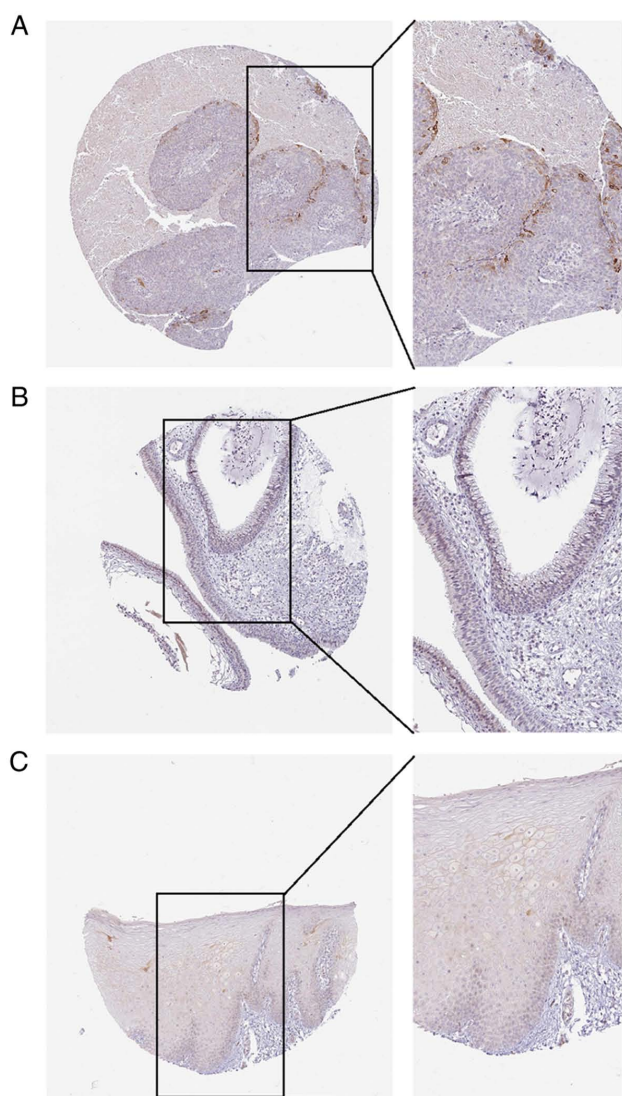


Figure 8. The APOL1 expression in normal tissues and HNSCC tissues from the Human Protein Atlas database (antibody CAB056156). (A) Poorly differentiated metastasis of HNSCC to lymph nodes for APOL1. (B) Normal nasopharynx tissues low expression for APOL1. (C) Normal oral mucosa negative tissues for APOL1. Magnification, x100 and x200. HNSCC, head and neck squamous cell carcinoma; APOL1, apolipoprotein L1.

Discussion

The human *APOL1* gene is located at chromosome 22q13 (28). *APOL1* induces inflammatory cytokines (for example IFN and TNF) and the tumor suppressor gene *p53* (46). Alterations in *APOL1* function can lead to the occurrence of cancer, chronic nephropathy, atherosclerosis and other diseases (32-34). It has been reported that autophagy is a cellular pathway that transmits cytoplasmic components to lysosomes for degradation and recycling (47). *APOL1* is a Bcl-2 homologous domain 3 monolipid-binding protein, which can maintain sufficient autophagy flux of podocytes under normal physiological conditions. When *APOL1* is overexpressed, it can enhance the autophagy ability of podocytes, liver cancer cells and melanoma cells (48-50). A previous study has shown that among the seven exons of *APOL1*, exon 4 is the main determinant of *APOL1G0* cytotoxicity (51). This lysosome-related autophagy is triggered by several pathways. First, *APOL1*

Table III. Clinicopathological parameters and APOL1 expression of 49 patients with LSCC.

Clinicopathological parameter	APOL1 expression, n		P-value
	High	Low	
Cancerous cases vs. non-cancerous cases			
Cancerous cases	45	4	<0.0001
Non-cancerous cases	0	5	
Sex			
Male	44	4	0.9180
Female	1	0	
Age, years			
≥60	20	0	0.1350
<60	25	4	
Grade			
1-2	29	4	0.1930
3-4	16	0	
Stage			
I-II	15	0	0.2190
III-IV	30	4	
Pathological T			
T1-T2	28	0	0.0600
T3-T4	16	3	
Pathological N			
N0	22	0	0.0830
N1	23	4	
Pathological M			
M0	45	4	-
M1	0	0	

LSCC, laryngeal squamous cell carcinoma; IHC, immunohistochemistry; T, tumor; N, node; M, metastasis; APOL1, apolipoprotein L1. Grade, clinical pathological grade; Stage, TNM stage

disrupts intracellular vesicle transport by interfering with autophagosome maturation, and *APOL1* can be inserted into the plasma membrane to form pH-sensitive cation channels, which can change the pH value of endocytosis and enhance the activity of trypsin decomposition (46,48). Second, *APOL1* may interact with GTPase or SNARE proteins, thus interfering with autophagy maturation and lysosome fusion (52). *APOL1* renal risk alleles (G1 and G2), also called renal risk variants (RRVs), inhibit the *APOL1*-miR193a axis of differentiated podocytes (DPDs) (53), resulting in a decrease in the assembly of PI3KC3-ATG14L and PI3KC3-anti-UV radiation resistance associated gene complexes needed for autophagy nucleus formation and maturation. This is a separate pathway by which *APOL1* can trigger lysosome-mediated autophagy (54). Third, *APOL1RRVs* can affect the permeability of intracellular and plasma membrane (55), and activate the opening of mitochondrial pores and form oligomers, resulting in cytotoxicity (56).

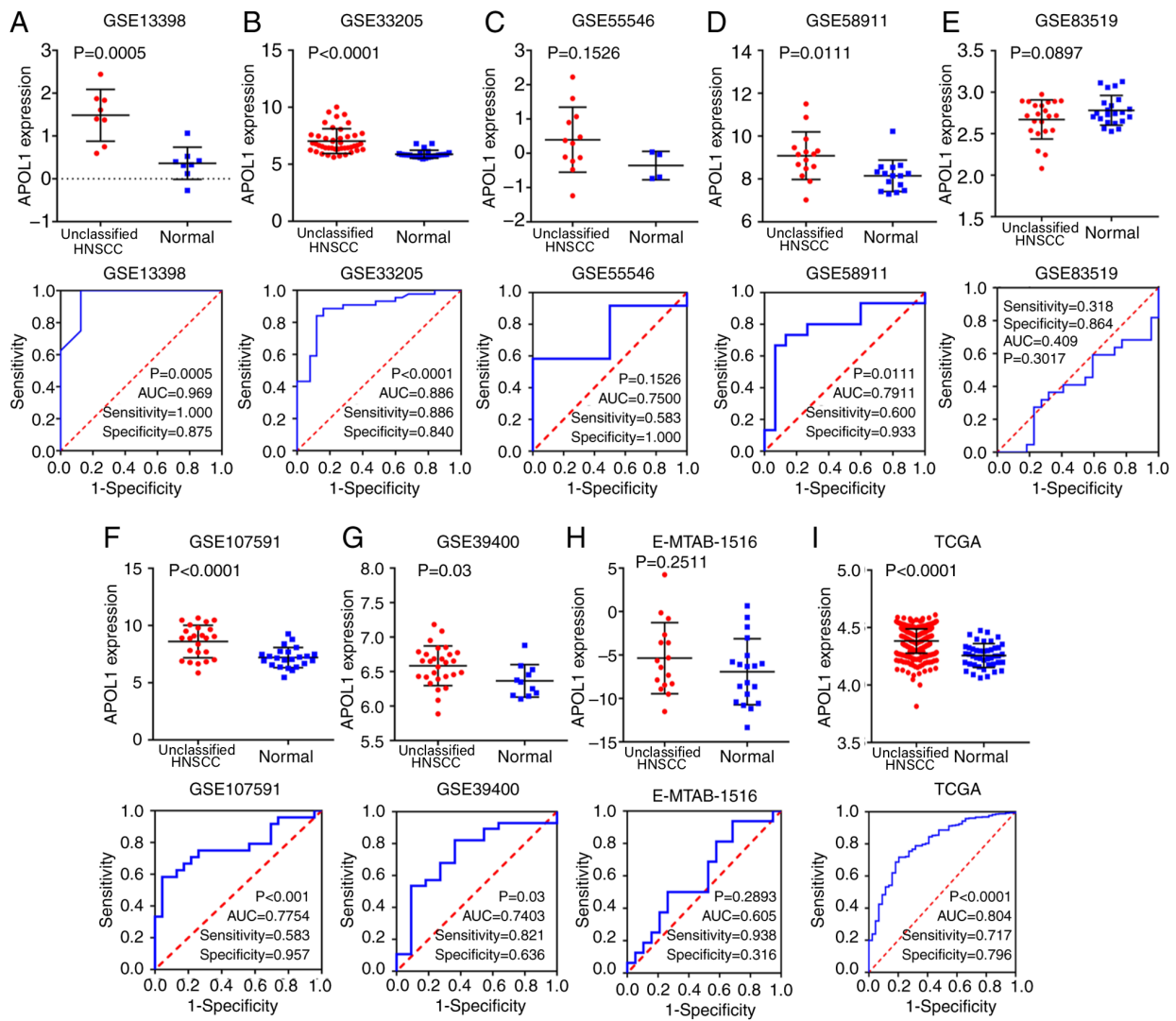


Figure 9. APOL1 expression and ROC curves in unclassified subgroup HNSCC tissues. (A-I) Expression data of APOL1 and corresponding ROC curves in unclassified subgroups HNSCC tissues in nine microarrays from TCGA, ArrayExpress and GEO datasets. APOL1, apolipoprotein L1; TCGA, The Cancer Genome Atlas; GEO, Gene Expression Omnibus; ROC, receiver operating characteristic; HNSCC, head and neck squamous cell carcinoma; AUC, area under the curve.

The process of the activation of the cGAS/IFI16-STING pathway begins by binding of cytosolic nsDNA by cyclic GMP-AMP synthase (cGAS) and interferon-inducible protein 16 (IFI16), which activates stimulator of interferon genes (STING), and the cGAS/IFI16-STING pathway finally promotes the transcription of APOL1 through signaling cascade (57). The expression of APOL1 induced by nucleosome-associated double-stranded DNA fragments is mediated by the IFN β -dependent signaling pathway, which is triggered by the activation of the cGAS/IFI16-STING pathway (57). It has been demonstrated that a high level of APOL1 expression can cause autophagy and autophagy-related cell death in various tissues that are associated with the occurrence of cancer, cardiomyopathy, obesity and neurodegenerative diseases (58,59). Autophagy plays a dual role oncogenesis and the development of tumors (60,61). In normal physiological conditions, autophagy helps to degrade denatured proteins and damaged organelles, which aids in preventing cells from becoming cancerous (62). However, when tumor cells are formed, adjacent normal cells can also provide nutrients for the growth of tumors through autophagy (63). These factors

led to the hypothesis that APOL1 may be associated with the development of HNSCC. Based on the present results, it was speculated that the expression of APOL1 would make it more easily to promote the development of HNSCC through inducing autophagy, which leads to tumor growth and invasion.

The present study collected a mass of chips by mining TCGA, ArrayExpress and GEO databases. The HPA was also used to verify differences in the APOL1 protein expression between HNSCC and normal tissues. HNSCC tissues and normal tissues were also collected in-house for IHC analysis. The current study had several highlights. First of all, a total of 39 sets of microarrays and RNA-seq data were collected to show the mRNA level of APOL1, and 221 cases of HNSCC tissues and 24 cases of normal head and neck tissues were used in IHC detection for protein level. Secondly, several methods were used to analyze APOL1 expression in HNSCC tissues, such as IHC on tissue microarrays, gene microarrays, RNA-sequencing, and also the integrated analysis. Therefore, the association between the HNSCC tissues and the expression of APOL1 could be observed at both the mRNA and protein

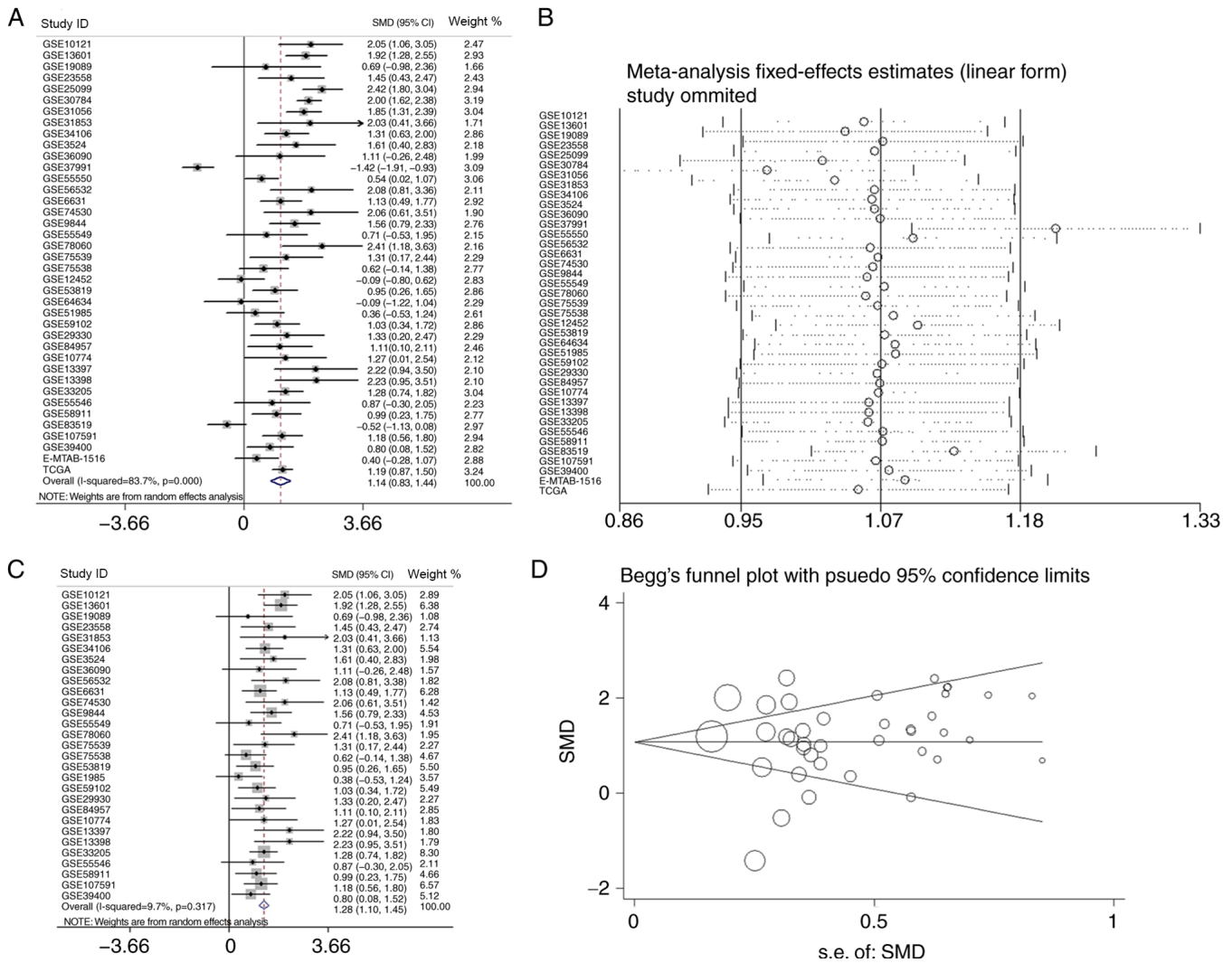


Figure 10. The analysis of the mRNA expression of APOL1 in HNSCC. (A) Forest plots of studies evaluating standard mean difference of APOL1 between HNSCC and non-tumor group. (B) Sensitivity analysis of the expression level of APOL1 in HNSCC and non-tumor group. (C) Forest plots of APOL1 expression between HNSCC and non-tumor group after removing the following studies: GSE25099, GSE30784, GSE31056, GSE37991, GSE55550, GSE12452, GSE64634, GSE83519, E-MTAB-1516 and TCGA. (D) Funnel plot for publication bias test after analysis of the expression level of APOL1 in HNSCC. The size represented by the Begg's plot circle is the weight of each data concentration. HNSCC, head and neck squamous cell carcinoma; APOL1, apolipoprotein L1; SMD, standardized mean difference; CI, confidence interval.

levels in multiple cohorts using multiple detection methods. This provided more evidence demonstrating APOL1 upregulation in HNSCC than results from a single cohort and single detection method approach would.

In order to make the study more applicable, OSCC and LSCC cases were selected for HNSCC subgroup analysis. By applying IHC to analyze the protein expression levels of APOL1 in 135 cases of OSCC tissues, it was demonstrated that the protein content of APOL1 in OSCC was higher compared with that in healthy tissues. However, after analyzing the association between APOL1 expression and the clinicopathological parameters in OSCC, significant differences were only identified in terms of sex. In the analysis of APOL1 mRNA expression in OSCC, APOL1 was expressed at significantly higher levels in OSCC tissues compared with in normal tissues. In addition, the results of sROC, pre-test probability, post-test probability positive and post-test probability negative indicated that APOL1 had a notable discriminatory capability for OSCC.

By applying IHC to analyze the protein expression levels of APOL1 in 49 cases of LSCC tissues, it was revealed that the protein expression levels of APOL1 in LSCC tissues were significantly higher compared with those in normal tissues. The association between APOL1 expression levels and clinicopathological parameters (including sex, age, tumor grade and clinical stage) were investigated but no significant differences were observed. In the analysis of APOL1 mRNA expression in LSCC microarrays, APOL1 levels were significantly higher in LSCC tissues compared with those in normal tissues. In addition, the results of sROC, the pre-test probability, the post-test probability positive and the post-test probability negative indicated that APOL1 had a notable discriminatory capability for LSCC.

It has been reported that APOL1 expression is higher in papillary thyroid carcinoma (PTC) and renal cell carcinoma (RCC) tissues compared with respective normal tissues (64,65). However, Liu *et al* (34) demonstrated that the expression of APOL1 in paracancerous tissues is greater

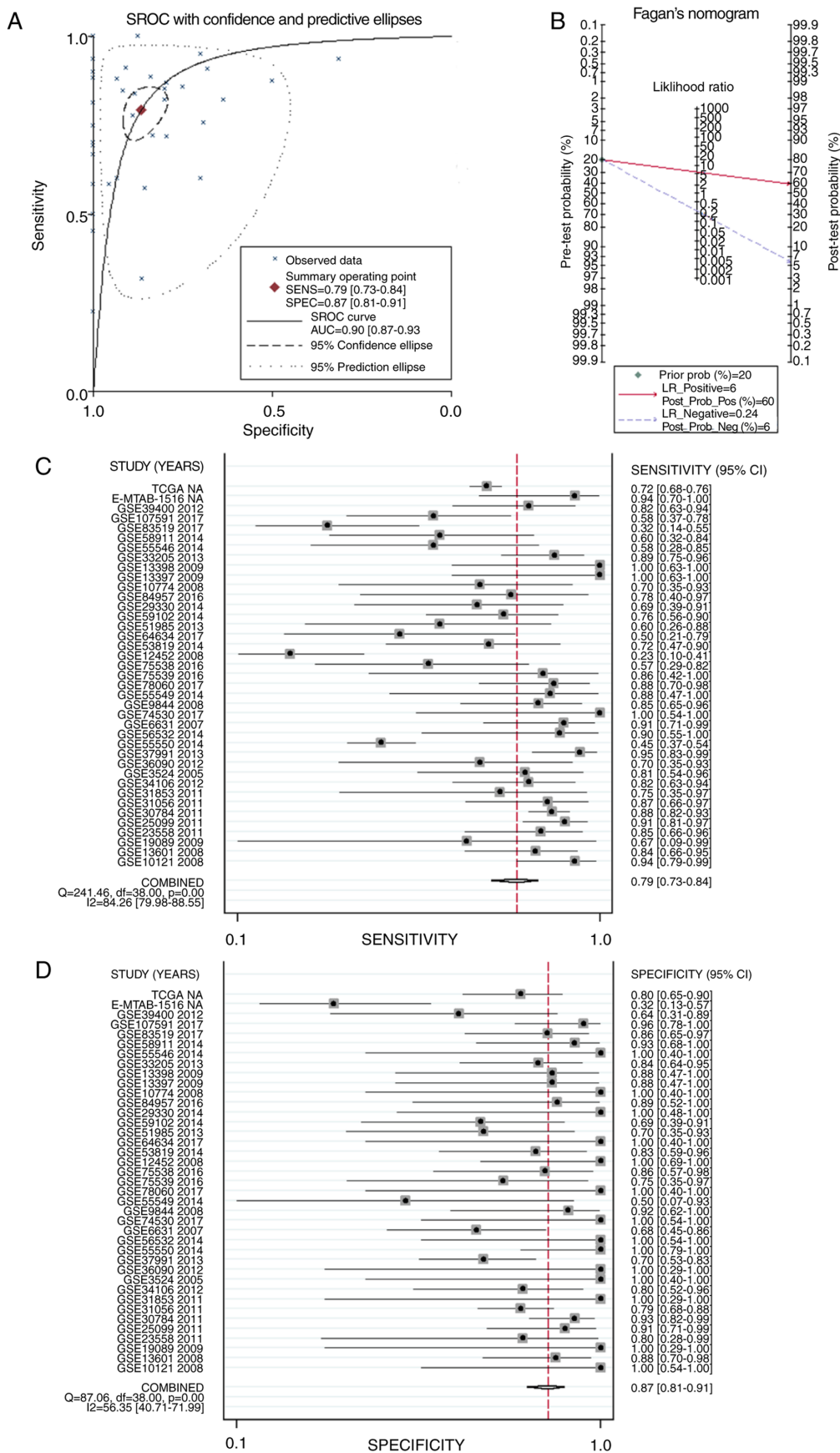


Figure 11. sROC curves analysis of APOL1 for discriminating HNSCC from normal tissues, prior probability post-probability, positive and negative of the included studies and sensitivity and specificity values. (A) sROC curves analysis of APOL1 for discriminating HNSCC from normal tissues based on GEO datasets. (B) Prior probability and post-probability positive and negative of the included studies. The prior probability, post probability positive and negative reached 20, 60 and 6%, respectively. (C and D) Sensitivity and specificity values of the included studies. The sensitivity and specificity values of the included studies were 0.79 (95% CI, 0.73-0.84) and 0.87 (95% CI, 0.81-0.91), respectively. HNSCC, head and neck squamous cell carcinoma; APOL1, apolipoprotein L1; LR, likelihood ratio; sROC, summary receiver operating characteristic; CI, confidence interval.

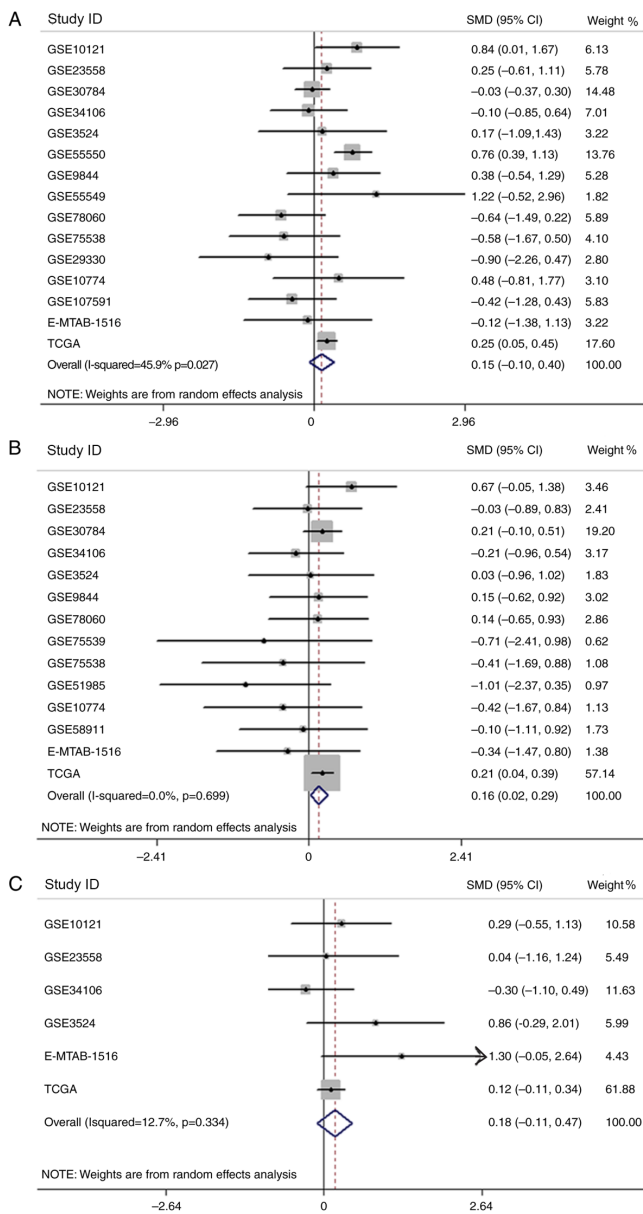


Figure 12. The clinical significance of the mRNA expression of APOL1 in HNSCC. (A) Forest plots of studies evaluating SMD of APOL1 expression between the male and female group. (B) Forest plots of studies evaluating SMD of APOL1 expression between patients <60 and ≥60 years old. (C) Forest plots of studies evaluating SMD of APOL1 expression between stage I-II and III-IV. APOL1, apolipoprotein L1; HNSCC, head and neck squamous cell carcinoma; SMD, standardized mean difference; CI, confidence interval.

compared with that in pancreatic cancer (PC) tissues (34). This may be because PTC is derived from squamous epithelial cells. Similarly, OSCC and LSCC are also derived from squamous epithelial cells, therefore the expression of APOL1 in cancer may be dependent on the cell type. However, the dominant histological type of PC was pancreatic ductal adenocarcinoma, derived from ductal or acinar cells, and RCC originates in proximal renal tubular epithelial cells (65,66).

There were several similarities in the expression of APOL1 in OSCC and LSCC subgroups. First, by applying IHC to measure the levels of APOL1, it was reported that APOL1 was significantly expressed in OSCC and LSCC tumor tissues compared with respective normal tissues. Second, analysis of

Table IV. The clinicopathological parameters and APOL1 expression of 221 patients with HNSCC.

Clinicopathological parameter	APOL1 expression, n		P-value
	High	Low	
Cancerous cases vs. non-cancerous cases			
Cancerous cases	126	95	<0.0001
Non-cancerous cases	0	24	
Sex			
Male	114	70	0.0040
Female	12	25	
Age, years			
≥60	54	38	0.6850
<60	72	57	
Grade			
1-2	89	79	<0.0001
3-4	39	14	
Stage			
I-II	50	39	0.0870
III-IV	76	54	
Pathological T			
T1-T2	85	66	0.0190
T3-T4	41	27	
Pathological N			
N0	69	54	0.7630
N1	57	39	
Pathological M			0.4270
M0	126	93	
M1	0	0	

APOL1, apolipoprotein L1; HNSCC, head and neck squamous cell carcinoma; T, tumor; N, node; M, metastasis. Grade, clinical pathological grade; Stage, TNM stage.

APOL1 mRNA expression revealed that APOL1 levels were higher in tumor tissues compared with normal tissues. Third, no significant difference was found between APOL1 expression levels and certain clinicopathological parameters, including age, tumor grade and TNM stage (45) for both subtypes. Fourth, APOL1 had a valuable discriminatory capability for OSCC and LSCC to be separated from non-cancerous SCC tissues.

According to Table III, of the three microarrays of APOL1 expression profiling in NPC tissues, one NPC microarray showed that the upregulation of APOL1 was significant (P=0.007). The result was quite different from that of OSCC and LSCC. It has been shown that the initiation and progress of NPC is closely associated with the status of Epstein-Barr virus (EBV) infection (67). Some EBV gene products are involved in tumor progression and play a vital part in epithelial-mesenchymal transition, angiogenesis and metastasis in

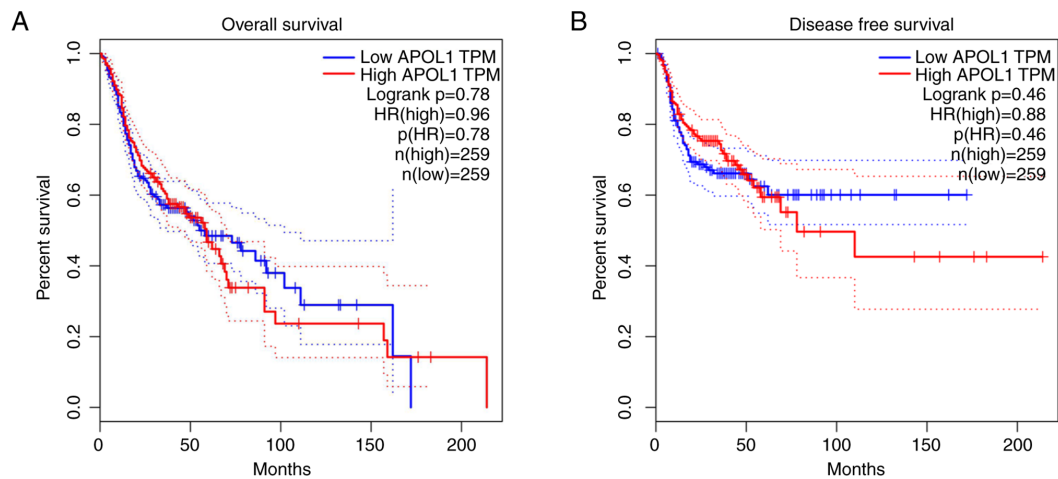


Figure 13. The Kaplan-Meier survival curve of APOL1 in head and neck squamous cell carcinoma by RNA sequencing. (A) Overall survival and (B) disease-free survival. APOL1, apolipoprotein L1; TPM, transcripts per million; HR, hazard ratio.

NPC (67,68). The *APOL1* gene may have a limited contribution to the initiation and progress of NPC.

By analyzing the data from the HPA database and our IHC results, it was observed that the content of APOL1 protein in tumor tissue higher compared with that in non-tumor tissue. In the analysis of the mRNA expression of APOL1 in HNSCC by microarrays and RNA-seq, the same pattern was observation. The results of sROC, the pre-test probability, the post-test probability positive and the post-test probability negative indicated that APOL1 upregulation had potential diagnostic value for HNSCC. When overexpressed, APOL1 induces autophagy and autophagy-related cell death (65). Through autophagy, adjacent normal cells are degraded and provide nutrition for the growing tumor (63).

Despite the aforementioned findings, the present study has some limitations. For example, we did not perform *in vitro* studies to investigate the mechanisms underpinning APOL1 function in HNSCC cells, and the sample size used in present study could be enlarged. The pathological mechanism of the disease is still not clear, and further research is underway. However, the present results may aid the development of potential interventions in the future. High expression of APOL1 may directly or indirectly result in the occurrence of HNSCC, therefore APOL1 is expected to be a biomarker for HNSCC. The present results may help improve our understanding of the occurrence and prognosis of HNSCC and provide new avenues for future research.

In conclusion, compared with non-cancerous head and neck tissues, APOL1 expression was significantly elevated in most HNSCC tissues. This indicated that APOL1 might play a vital role in the oncogenesis and development of HNSCC. The present study is the first to identify an association between HNSCC and APOL1, to the best of our knowledge. The current findings also suggest that APOL1 has the potential to be a promising biomarker, which warrants further study. However, further research is needed to resolve the molecular mechanisms underpinning the function of APOL1 in HNSCC.

Acknowledgements

Not applicable.

Funding

The study was supported by the Guangxi Medical and Health Appropriate Technology Development, and Popularization and Application Project (grant no. S2017020) and the Promoting Project of Basic Capacity for Young and Middle-aged University Teachers in Guangxi, China (grant no. 2018KY0123).

Availability of data and materials

The datasets generated and/or analyzed during the current study are available in the TCGA (<http://cancergenome.nih.gov/>), the GEO (<https://www.ncbi.nlm.nih.gov/geo/>) and ArrayExpress (<http://www.ebi.ac.uk/arrayexpress/>) data portals. The in-house IHC data from the present study can be acquired from the correspondence author on reasonable request.

Authors' contributions

XGZ, YL, MXL, GSL, XYC, YXY and YYQ collected data from public datasets, analyzed the data and performed the statistical analysis. HPL, YWD and ZGH performed in-house IHC experiments. FZ and GC participated in the conception and design of the study and in manuscript correction. MM, KLZ, HD and ZXW conceived and designed the study and assisted in the drafting of the manuscript. All authors have read and approved the final manuscript.

Ethics approval and consent to participate

This research program was approved by The Ethics Committee of the First Affiliated Hospital of Guangxi Medical University (Nanning, China). All participants signed informed consent forms.

Patient consent for publication

Not applicable

Competing interests

The authors declare that they have no competing interests.

References

- Siegel RL, Miller KD and Jemal A: Cancer statistics, 2018. *CA Cancer J Clin* 68: 7-30, 2018.
- Huang C, Cintra M, Brennan K, Zhou M, Colevas AD, Fischbein N, Zhu S and Gevaert O: Development and validation of radiomic signatures of head and neck squamous cell carcinoma molecular features and subtypes. *EBioMedicine* 45: 70-80, 2019.
- Xu Q, Wang C, Li B, Kim K, Li J, Mao M, Qin L, Li H, Huang X, Xing R, *et al*: The impact of age on oral squamous cell carcinoma: A longitudinal cohort study of 2,782 patients. *Oral Dis* 25: 730-741, 2019.
- Liu Y, Zhao Q, Ding G, Zhu Y, Li W and Chen W: Incidence and mortality of laryngeal cancer in China, 2008-2012. *Chin J Cancer Res* 30: 299-306, 2018.
- Jin Y and Yang Y: Bioinformatics-based discovery of PYGM and TNNC2 as potential biomarkers of head and neck squamous cell carcinoma. *Biosci Rep* Jul 39: BSR20191612, 2019.
- Torre LA, Bray F, Siegel RL, Ferlay J, Lortet-Tieulent J and Jemal A: Global cancer statistics, 2012. *CA Cancer J Clin* 65: 87-108, 2015.
- Ghantous Y and Abu Elnaaj I: Global incidence and risk factors of oral cancer. *Harefuah* 156: 645-649, 2017 (In Hebrew).
- Jemal A, Bray F, Center MM, Ferlay J, Ward E and Forman D: Global cancer statistics. *CA Cancer J Clin* 61: 69-90, 2011.
- Zhou C, Shen Z, Ye D, Li Q, Deng H, Liu H and Li J: The association and clinical significance of CDKN2A promoter methylation in head and neck squamous cell carcinoma: A meta-analysis. *Cell Physiol Biochem* 50: 868-882, 2018.
- Stjernström KD, Jensen JS, Jakobsen KK, Grønhoj C and von Buchwald C: Current status of human papillomavirus positivity in oropharyngeal squamous cell carcinoma in Europe: A systematic review. *Acta Otolaryngol* 139: 1112-1116, 2019.
- Gaździcka J, Gołębek K, Strzelczyk JK and Ostrowska Z: Epigenetic modifications in head and neck cancer. *Biochem Genet* 58: 213-244, 2020.
- Bhat S, Kabekkodu SP, Jayaprakash C, Radhakrishnan R, Ray S and Satyamoorthy K: Gene promoter-associated CpG island hypermethylation in squamous cell carcinoma of the tongue. *Virchows Arch* 470: 445-454, 2017.
- Ferlazzo N, Currò M, Zinellu A, Caccamo D, Isola G, Ventura V, Carru C, Matarese G and Ientile R: Influence of MTHFR genetic background on p16 and MGMT methylation in oral squamous cell cancer. *Int J Mol Sci* 18: 724, 2017.
- Wang K, Zheng M and Ren Y: Overexpression of TRMT12 may independently predict poor overall survival in patients with head and neck squamous cell carcinoma. *OncoTargets Ther* 12: 7269-7279, 2019.
- Liu C, Guo T, Xu G, Sakai A, Ren S, Fukusumi T, Ando M, Sadat S, Saito Y, *et al*: Characterization of alternative splicing events in HPV-negative head and neck squamous cell carcinoma identifies an oncogenic DOCK5 variant. *Clin Cancer Res* 24: 5123-5132, 2018.
- Li R, Ochs MF, Ahn SM, Hennessey P, Tan M, Soudry E, Gaykalova DA, Uemura M, Brait M, Shao C, *et al*: Expression microarray analysis reveals alternative splicing of LAMA3 and DST genes in head and neck squamous cell carcinoma. *PLoS One* 9: e91263, 2014.
- Liu C, Guo T, Sakai A, Ren S, Fukusumi T, Ando M, Sadat S, Saito Y and Califano JA: A novel splice variant of LOXL2 promotes progression of human papillomavirus-negative head and neck squamous cell carcinoma. *Cancer* 126: 737-748, 2020.
- Kelley DZ, Flam EL, Guo T, Danilova LV, Zamuner FT, Bohrsen C, Considine M, Windsor EJ, Bishop JA, Zhang C, *et al*: Functional characterization of alternatively spliced GSN in head and neck squamous cell carcinoma. *Transl Res* 202: 109-119, 2018.
- Li ZX, Zheng ZQ, Wei ZH, Zhang LL, Li F, Lin L, Liu RQ, Huang XD, Lv JW, Chen FP, *et al*: Comprehensive characterization of the alternative splicing landscape in head and neck squamous cell carcinoma reveals novel events associated with tumorigenesis and the immune microenvironment. *Theranostics* 9: 7648-7665, 2019.
- Licitra L, Mesia R, Rivera F, Remenár É, Hitt R, Erfán J, Rottey S, Kaweckí A, Zabolotnyy D, Benasso M, *et al*: Evaluation of EGFR gene copy number as a predictive biomarker for the efficacy of cetuximab in combination with chemotherapy in the first-line treatment of recurrent and/or metastatic squamous cell carcinoma of the head and neck: EXTREME study. *Ann Oncol* 22: 1078-1087, 2011.
- Ferris RL, Blumenschein G Jr, Fayette J, Guigay J, Colevas AD, Licitra L, Harrington KJ, Kasper S, Vokes EE, Even C, *et al*: Nivolumab vs investigator's choice in recurrent or metastatic squamous cell carcinoma of the head and neck: 2-year long-term survival update of CheckMate 141 with analyses by tumor PD-L1 expression. *Oral Oncol* 81: 45-51, 2018.
- Bauml J, Seiwert TY, Pfister DG, Worden F, Liu SV, Gilbert J, Saba NF, Weiss J, Wirth L, Sukari A, *et al*: Pembrolizumab for platinum- and cetuximab-refractory head and neck cancer: Results from a single-arm, phase II study. *J Clin Oncol* 35: 1542-1549, 2017.
- Napolitano M, Schipilliti FM, Trudu L and Bertolini F: Immunotherapy in head and neck cancer: The great challenge of patient selection. *Crit Rev Oncol Hematol* 144: 102829, 2019.
- Kao HF and Lou PJ: Immune checkpoint inhibitors for head and neck squamous cell carcinoma: Current landscape and future directions. *Head Neck* 41 (Suppl 1): 4-18, 2019.
- Ferris RL, Blumenschein G Jr, Fayette J, Guigay J, Colevas AD, Licitra L, Harrington K, Kasper S, Vokes EE, Even C, *et al*: Nivolumab for recurrent squamous-cell carcinoma of the head and neck. *N Engl J Med* 375: 1856-1867, 2016.
- Wang J, Lippman SM, Lee JJ, Yang H, Khuri FR, Kim E, Lin J, Chang DW, Lotan R, Hong WK, *et al*: Genetic variations in regulator of G-protein signaling genes as susceptibility loci for second primary tumor/recurrence in head and neck squamous cell carcinoma. *Carcinogenesis* 31: 1755-1761, 2010.
- Wu X, Spitz MR, Lee JJ, Lippman SM, Ye Y, Yang H, Khuri FR, Kim E, Gu J, Lotan R, *et al*: Novel susceptibility loci for second primary tumors/recurrence in head and neck cancer patients: Large-scale evaluation of genetic variants. *Cancer Prev Res (Phila)* 2: 617-624, 2009.
- Thomson R, Genovese G, Canon C, Kovacsics D, Higgins MK, Carrington M, Winkler CA, Kopp J, Rotimi C, Adeyemo A, *et al*: Evolution of the primate trypanolytic factor APOL1. *Proc Natl Acad Sci USA* 111: E2130-E2139, 2014.
- Riella C, Siemsen TA, Wang M, Campos RP, Moraes TP, Riella LV, Friedman DJ, Riella MC and Pollak MR: APOL1-associated kidney disease in Brazil. *Kidney Int Rep* 4: 923-929, 2019.
- Freedman BI, Spainhour M, Hicks PJ, Turner J, Robertson J, Langefeld CD, Murea M and Divers J: Nephropathy progression in African Americans with a family history of ESKD: Implications for Clinical Trials in APOL1-associated nephropathy. *Am J Kidney Dis* 74: 284-286, 2019.
- Franceschini N, Kopp JB, Barac A, Martin LW, Li Y, Qian H, Reiner AP, Pollak M, Wallace RB, Rosamond WD, *et al*: Association of APOL1 with heart failure with preserved ejection fraction in postmenopausal African American women. *JAMA Cardiol* 3: 712-720, 2018.
- Fontaine F, Lecordier L, Vanwalleghem G, Uzureau P, Van Reet N, Fontaine M, Tebabi P, Vanhollebeke B, Büscher P, Pérez-Morga D, *et al*: APOLs with low pH dependence can kill all African trypanosomes. *Nat Microbiol* 2: 1500-1506, 2017.
- Okamoto K, Rausch JW, Wakashin H, Fu Y, Chung JY, Dummer PD, Shin MK, Chandra P, Suzuki K, Shrivastav S, *et al*: APOL1 risk allele RNA contributes to renal toxicity by activating protein kinase R. *Commun Biol* 1: 188, 2018.
- Liu X, Zheng W, Wang W, Shen H, Liu L, Lou W, Wang X and Yang P: A new panel of pancreatic cancer biomarkers discovered using a mass spectrometry-based pipeline. *Br J Cancer* 117: 1846-1854, 2017.
- O'Toole JF, Bruggeman LA, Madhavan S and Sedor JR: The cell biology of APOL1. *Semin Nephrol* 37: 538-545, 2017.
- Kardideh B, Samimi Z, Norooznejhad F, Kiani S and Mansouri K: Autophagy, cancer and angiogenesis: Where is the link? *Cell Biosci* 9: 65, 2019.
- Codogno P and Morel E: FOXO3a provides a quickstep from autophagy inhibition to apoptosis in cancer therapy. *Dev Cell* 44: 537-539, 2018.
- Tao Q and Chan AT: Nasopharyngeal carcinoma: Molecular pathogenesis and therapeutic developments. *Expert Rev Mol Med* 9: 1-24, 2007.
- Sticht C, Freier K, Knöpfle K, Flechtenmacher C, Pungs S, Hefele C, Hahn M, Joos S and Lichten P: Activation of MAP kinase signaling through ERK5 but not ERK1 expression is associated with lymph node metastases in oral squamous cell carcinoma (OSCC). *Neoplasia* 10: 462-470, 2008.

40. Estilo CL, O-charoenrat P, Talbot S, Socci ND, Carlson DL, Ghossein R, Williams T, Yonekawa Y, Ramanathan Y, Boyle JO, *et al*: Oral tongue cancer gene expression profiling: Identification of novel potential prognosticators by oligonucleotide microarray analysis. *BMC Cancer* 9: 11, 2009.
41. Lian M, Fang J, Han D, Ma H, Feng L, Wang R and Yang F: Microarray gene expression analysis of tumorigenesis and regional lymph node metastasis in laryngeal squamous cell carcinoma. *PLoS One* 8: e84854, 2013.
42. Uhlen M, Zhang C, Lee S, Sjöstedt E, Fagerberg L, Bidkhori G, Benfantes R, Arif M, Liu Z, Edfors F, *et al*: A pathology atlas of the human cancer transcriptome. *Science* 357: eaan2507, 2017.
43. Uhlén M, Fagerberg L, Hallström BM, Lindskog C, Oksvold P, Mardinoglu A, Sivertsson Å, Kampf C, Sjöstedt E, Asplund A, *et al*: Proteomics. Tissue-based map of the human proteome. *Science* 347: 1260419, 2015.
44. Thul PJ, Åkesson L, Wiking M, Mahdessian D, Geladaki A, Blal HA, Alm T, Asplund A, Björk L, Breckels LM, *et al*: A subcellular map of the human proteome. *Science* 356: eaal3321, 2017.
45. Huang SH and O'Sullivan B: Overview of the 8th edition TNM classification for head and neck cancer. *Curr Treat Options Oncol* 18: 40, 2017.
46. Zhaorigetu S, Wan G, Kaini R, Jiang Z and Hu CA: ApoL1, a BH3-only lipid-binding protein, induces autophagic cell death. *Autophagy* 4: 1079-1082, 2008.
47. Ho CJ and Gorski SM: Molecular mechanisms underlying autophagy-mediated treatment resistance in Cancer. *Cancers (Basel)* 11: 1775, 2019.
48. O'Toole JF, Schilling W, Kunze D, Madhavan SM, Konieczkowski M, Gu Y, Luo L, Wu Z, Bruggeman LA and Sedor JR: ApoL1 overexpression drives variant-independent cytotoxicity. *J Am Soc Nephrol* 29: 869-879, 2018.
49. Kruzel-Davila E, Shemer R, Ofir A, Bavli-Kertselli I, Darlyuk-Saadon I, Oren-Giladi P, Wasser WG, Magen D, Zaknoun E, Schuldiner M, *et al*: APOL1-mediated cell injury involves disruption of conserved trafficking processes. *J Am Soc Nephrol* 28: 1117-1130, 2017.
50. Cheng D, Weckerle A, Yu Y, Ma L, Zhu X, Murea M, Freedman BI, Parks JS and Shelness GS: Biogenesis and cytotoxicity of APOL1 renal risk variant proteins in hepatocytes and hepatoma cells. *J Lipid Res* 56: 1583-1593, 2015.
51. Khatua AK, Cheatham AM, Kruzel ED, Singhal PC, Skorecki K and Popik W: Exon 4-encoded sequence is a major determinant of cytotoxicity of apolipoprotein L1. *Am J Physiol Cell Physiol* 309: C22-C37, 2015.
52. Beckerman P, Bi-Karchin J, Park AS, Qiu C, Dummer PD, Soomro I, Boustany-Kari CM, Pullen SS, Miner JH, Hu CA, *et al*: Transgenic expression of human APOL1 risk variants in podocytes induces kidney disease in mice. *Nat Med* 23: 429-438, 2017.
53. Kumar V, Paliwal N, Ayasolla K, Vashistha H, Jha A, Chandel N, Chowdhary S, Saleem MA, Malhotra A, Chander PN, *et al*: Disruption of APOL1-miR193a axis induces disorganization of podocyte actin cytoskeleton. *Sci Rep* 9: 3582, 2019.
54. Kumar V, Ayasolla K, Jha A, Mishra A, Vashistha H, Lan X, Qayyum M, Chinnapaka S, Purohit R, Mikulak J, *et al*: Disrupted apolipoprotein L1-miR193a axis dedifferentiates podocytes through autophagy blockade in an APOL1 risk milieu. *Am J Physiol Cell Physiol* 317: C209-C225, 2019.
55. Bruno J, Pozzi N, Oliva J and Edwards JC: Apolipoprotein L1 confers pH-switchable ion permeability to phospholipid vesicles. *J Biol Chem* 292: 18344-18353, 2017.
56. Shah SS, Lannon H, Dias L, Zhang JY, Alper SL, Pollak MR and Friedman DJ: APOL1 kidney risk variants induce cell death via mitochondrial translocation and opening of the mitochondrial permeability transition pore. *J Am Soc Nephrol* 30: 2355-2368, 2019.
57. Davis SE, Khatua AK and Popik W: Nucleosomal dsDNA Stimulates APOL1 expression in human cultured podocytes by activating the cGAS/IFI16-STING signaling pathway. *Sci Rep* 9: 15485, 2019.
58. Choi AM, Ryter SW and Levine B: Autophagy in human health and disease. *N Engl J Med* 368: 651-662, 2013.
59. Kundu M and Thompson CB: Autophagy: Basic principles and relevance to disease. *Annu Rev Pathol* 3: 427-455, 2008.
60. Antunes F, Erustes AG, Costa AJ, Nascimento AC, Bincoletto C, Ureshino RP, Pereira GJ and Smaili SS: Autophagy and intermittent fasting: The connection for cancer therapy? *Clinics (Sao Paulo)* 73 (Suppl 1): e814s, 2018.
61. Salminen A, Kaarniranta K and Kauppinen A: Beclin 1 inter-actome controls the crosstalk between apoptosis, autophagy and inflammasome activation: Impact on the aging process. *Ageing Res Rev* 12: 520-534, 2013.
62. Yu L, Chen Y and Tooze SA: Autophagy pathway: Cellular and molecular mechanisms. *Autophagy* 14: 207-215, 2018.
63. Levy JM, Towers CG and Thorburn A: Targeting autophagy in cancer. *Nat Rev Cancer* 17: 528-542, 2017.
64. Chidiac M, Fayyad-Kazan M, Daher J, Poelvoorde P, Bar I, Maenhaut C, Delrée P, Badran B and Vanhamme L: ApolipoproteinL1 is expressed in papillary thyroid carcinomas. *Pathol Res Pract* 212: 631-635, 2016.
65. Hu CA, Klopfer EI and Ray PE: Human apolipoprotein L1 (ApoL1) in cancer and chronic kidney disease. *FEBS Lett* 586: 947-955, 2012.
66. Xu Y, Liu J, Nipper M and Wang P: Ductal vs. acinar? Recent insights into identifying cell lineage of pancreatic ductal adenocarcinoma. *Ann Pancreat Cancer*: Jun 17, 2019 (Epub ahead of print). doi: 10.21037/apc.2019.06.03.
67. Zhang J, Jia L, Tsang CM and Tsao SW: EBV infection and glucose metabolism in nasopharyngeal carcinoma. *Adv Exp Med Biol* 1018: 75-90, 2017.
68. Elgui de Oliveira D, Müller-Coan BG and Pagano JS: Viral carcinogenesis beyond malignant Transformation: EBV in the progression of human cancers. *Trends Microbiol* 24: 649-664, 2016.



This work is licensed under a Creative Commons Attribution-NonCommercial-NoDerivatives 4.0 International (CC BY-NC-ND 4.0) License.