

Published in final edited form as:

Proc SPIE Int Soc Opt Eng. 2022 April 4; 12034: . doi:10.1117/12.2608597.

SciKit-SurgeryGlenoid, an Open Source Toolkit for Glenoid Version Measurement

Asta Olafsdottir¹, Addie Majed², David Butt², Mark Falworth², Matthew J. Clarkson¹, Stephen Thompson¹

¹Wellcome/EPSRC Centre for Interventional and Surgical Science, University College London, United Kingdom

²The Royal National Orthopaedic Hospital NHS Trust

Abstract

Correct understanding of the geometry of the glenoid (the socket of the shoulder joint) is key to successful planning of shoulder replacement surgery. This surgery typically involves placing an implant in the shoulder joint to restore joint function. The most relevant geometry is the glenoid version, which is the angular orientation of the glenoid surface relative to the long axis of the scapula in the axial plane. However, measuring the glenoid version is not straightforward and there are multiple measurement methods in the literature and used in commercial planning software.

In this paper we introduce SciKit-SurgeryGlenoid, an open source toolkit for the measurement of glenoid version. SciKit-SurgeryGlenoid contains implementations of the 4 most frequently used glenoid version measurement algorithms enabling easy and unbiased comparison of the different techniques. We present the results of using the software on 10 sets of pre-operative CT scans taken from patients who have subsequently undergone shoulder replacement surgery. We further compare these results with those obtained from a commercial implant planning software.

SciKit-SurgeryGlenoid currently requires manual segmentation of the relevant anatomical features for each method. Future work will look at automating the segmentation process to build an automatic and repeatable pipeline from CT or radiograph to quantitative glenoid version measurement.

1 Introduction

Correct understanding of the geometry of the glenoid (the socket of the shoulder joint) is key to successful planning of shoulder replacement surgery. This surgery typically involves placing an implant in the shoulder joint to restore joint function. The most relevant geometry is the glenoid version, which is the angular orientation of the glenoid surface relative to

This work is licensed under a [CC BY 4.0](https://creativecommons.org/licenses/by/4.0/) International license.

⁶ Open Access and Open Data

This research was funded in whole, or in part, by the Wellcome Trust [203145Z/16/Z]. For the purpose of Open Access, the author has applied a CC BY public copyright licence to any Author Accepted Manuscript version arising from this submission.

The data described in Sections 2.3 and 3 consist of anonymised patient scans. The original scans cannot be shared, but data derived from them will be made available in order to allow replication of our results. The software and derived data have been archived on Zenodo.¹⁹

the long axis of the scapula in the horizontal (axial) plane. However, measuring the glenoid version is not straightforward and there are multiple measurement methods in the literature and used in commercial planning software.

Glenoid version can be computed from 2D radiographs or from 3D CT scans. The use of radiographs for glenoid measurement has been shown to be less reliable than CT based methods,¹⁸ so most modern approaches use CT scans for glenoid version measurement. Methods using CT scans can be divided into 2D methods that use a single axial slice to estimate glenoid version and 3D methods that use landmark points in multiple slices. 2D methods have been shown to be more susceptible to positional variance,⁵ however there is not as yet an agreed single method for glenoid version measurement. There are many papers comparing the use of different methods for measuring glenoid version or proposing new methods.^{4, 7, 24, 25} Different methods are also implemented by implant vendors and commercial software suppliers¹⁻³ however, the exact methods used in each case are not published.

There is a need therefore for reliable open source implementations of the various methods for measuring glenoid version to enable further research comparing the methods. We have developed SciKit-SurgeryGlenoid to meet this need and herein present early results of SciKit-SurgeryGlenoid's use on retrospectively gathered data.

2 Methods

2.1 Measuring Glenoid Version

SciKit-SurgeryGlenoid currently implements two 3D methods; the two-plane method described by Ganapathi et al.¹³ and the 3D corrected Friedman method described by Budge et al.⁶ SciKit-SurgeryGlenoid also implements two 2D methods; Friedman's method¹¹ and the vault method described by Matsumura et al.¹⁶ Each implementation can be accessed via a command line application which takes as input a file describing the anatomical position of the required landmark points.

Although the longer term aim is to automate the identification of landmark points, SciKit-SurgeryGlenoid currently requires the landmark points to be manually identified. Figure 1 gives a graphical description of the work flow we used.

The selection of the different landmark points for each method and calculations of version measurements were done as follows. For the two-plane method, 3 points were chosen for each plane. For the glenoid fossa plane the points selected were near the rim, one at the superior pole of the glenoid and two on the lower third of the glenoid anteriorly and posteriorly (black points on figure 2a). For the scapula plane, the 3 points included one at the center of the glenoid, another at the medial border of the scapula where the scapular spine intersects the scapular body, and a third at the inferior tip of the scapula (orange points on figure 2a). The glenoid version was then calculated as the angle between the plane of the glenoid fossa and the plane of the scapula.

For the Friedman and vault method 3 points were chosen to form 2 lines. Both require the same two points at the edges of the glenoid fossa anteriorly and posteriorly (black points on 2b and 2c). For the Friedman method the third point was selected at the tip of the scapula, while for the vault method it was at the tip of the scapular vault. The point selection was done on a 2D axial slice (see 2e and 2f). Therefore, slice choice is important and in this case was selected as the axial slice at which the coracoid process is no longer visible. The Friedman line was formed with the medial point on the scapula and the midpoint between the glenoid fossa points, while the vault line was formed with the tip of the scapular vault and the same midpoint. The second line was formed across the glenoid fossa in both methods. The version was then calculated as the angle between the two lines.

The corrected Friedman method requires the same anatomical landmark points as the conventional Friedman method, but on a corrected axial plane. This plane (blue plane in 2a) should be perpendicular to the scapular plane which is formed by the same 3 points as the scapular plane for the two-plane method (black plane in 2a). The new transverse scapular plane (blue plane in 2d) was used to generate a new 2D image slice on which the same conventional Friedman landmark points were selected.

2.2 Software Implementation with SciKit-Surgery

SciKit-SurgeryGlenoid is built on top of the SciKit-Surgery²⁷ libraries which enabled rapid development and future deployment into a clinically useable application. Development was kick started using the SciKit-Surgery Python Template⁹ enabling the bulk of the development and testing to be performed during a 10 week summer internship with minimal prior experience of Python or software development. Use of the Python Template encourages good software development practice²² from the outset of the development process. SciKit-Surgery also includes template libraries for C++ projects.¹⁰

SciKit-Surgery is made up of multiple Python libraries that can be assembled into varied applications for research in image guided surgery. Some current examples of SciKit-Surgery's use include clinical guidance systems,²⁰ research platforms for registration²⁶ and ultrasound simulators.²⁸ Figure 3 shows the immediate dependencies of SciKit-SurgeryGlenoid. The most significant dependencies are NumPy¹⁴ which is used for the version calculation, and VTK²¹ which is used for visualising the results. SciKit-SurgeryCore provides configuration helpers for the user interface. SciKit-SurgeryVTK provides some helpful loaders and shape primitives, but it may be useful to remove this dependency in the future as it would significantly simplify the dependency graph.

2.3 Experimental Validation

We tested the performance of SciKit-SurgeryGlenoid on 10 anonymised CT scans from patients eligible for shoulder replacement surgery. For each CT scan we performed segmentation and landmark annotation using 3DSlicer¹⁵ and processed the resulting segmentation using SciKit-SurgeryGlenoid.

Statistical analysis was performed using GraphPad Prism software version 8.0 for Mac^{*}. The mean and standard deviation of each method was calculated and compared. Our current clinical practice uses planning software from DJO Surgical,² so we compared the results

from SciKit-SurgeryGlenoid with the results from the DJO Surgical software. Pearson's correlation coefficient was determined between the commercial software and each method. A repeated measures ANOVA was performed to determine any significant differences in version measurements between the methods. Significance level for all analyses was set at 0.05.

3 Results

Table 1 presents the results of using SciKit-SurgeryGlenoid on 10 patients. The version measured using the planes method has a mean glenoid version of 8.9° (SD, 4.7°; range, 5° to 20.9°), while mean glenoid version for the 3D corrected Friedman method was 8.4° (SD, 6.5°; range, -4.0° to 16.9°). For the 2D methods, the mean glenoid version for the Friedman method was 9.4° (SD, 7.4°; range, -0.7° to 24°) and for the vault model was 12.3° (SD, 7.7°; range, 4° to 26°). In this case a positive value indicates retroversion while a negative value indicates anteversion of the glenoid. Overall, the 3D methods resulted in both lower mean version values as well as lower variability, while the 2D methods revealed a slightly higher variability.

The measurements using these methods were also compared with version measurements on the same 10 patients using a commercial software.² The planes method ($r = 0.90$, $p = 0.0004$), corrected Friedman method ($r = 0.83$, $p = 0.0034$), and conventional Friedman method ($r = 0.79$, $p = 0.0064$) all showed significant correlation with the commercial software. The vault method did not show significant correlation ($r = 0.59$, $p = 0.074$). The mean difference between the methods were overall not significant ($p > 0.05$), except for the vault method ($p = 0.03$). Correlation plots are shown in Figure 4.

4 Discussion

There are several methods that have been proven to be accurate in preoperative measurement of the glenoid version. Specifically, 3D methods have become the standard as they provide a higher accuracy accounting for the positional errors during image acquisition (Budge et al.,⁶ Moineau et al.¹⁷). Testing the most common 2D and 3D methods using the SciKit-SurgeryGlenoid toolkit allowed for an evaluation of its effectiveness in comparing these methods. The early results presented are consistent with previously reported results (Matsumura et al.,¹⁶ Budge et al.,⁶ Ganapathi et al.¹³).

While the mean version did not show any significant difference between most methods, this could be due to the small sample size used in this case. However, it is notable that the 3D methods reveal slightly lower version means and lower standard deviations which could prove significant when more scans are analysed with additional observers.

From the Pearson correlation coefficient, significant correlation between the commercial software and 3 out of the 4 methods was seen. The vault method showing little correlation with the commercial software could be due to its much higher mean version value. The vault method tends to overestimate the glenoid version as has been previously reported

*GraphPad Software, San Diego, CA, USA

by several studies (Cunningham et al.,⁸ Matsumura et al.¹⁶). The correlation tests prove however that there is good agreement between SciKit-SurgeryGlenoid and the commercial software already in use, indicating accuracy and credibility of this toolkit. While this can be a good indicator of reliability, further measurements using this software by different observers would be needed to be able to test inter and intra observer reliability. However, SciKit-SurgeryGlenoid proves to be promising in providing an unbiased way of comparing the many different methods available to measure glenoid version.

Limitations of this initial testing of SciKit-SurgeryGlenoid include the small sample size used. A study with a wider range of CT scans could reveal better understanding of the software's reliability. Additionally, as points for each method were selected manually, there are some inaccuracies that arise which could be better understood with repeated measurements and multiple observers.

5 Conclusion

SciKit-SurgeryGlenoid provides a useful resource for shoulder arthroplasty. Future work could look at either automating the segmentation process using state of the art registration algorithms¹² to create a fully automatic pipeline, or at integrating the library with 3DSlicer to create a “slicelet” based application, similar to our previous work²³ in skull base navigation.

Acknowledgements

This work is supported by the Wellcome/EPSRC Centre for Interventional and Surgical Sciences (WEISS) [203145Z/16/Z].

References

1. Blueprint 3D planning software. Accessed: 2021-07-27 <https://www.wright.com/blueprint-3d-planning-psi-system>
2. DJO surgical. Accessed: 2021-08-04 <https://www.djoglobal.com/our-brands/djo-surgical>
3. Exactech equinox. Accessed: 2021-07-27 <https://www.exac.com/extremities/equinixe-platform-system/>
4. Boileau P, Cheval D, Gauci MO, Holzer N, Chaoui J, Walch G. Automated three-dimensional measurement of glenoid version and inclination in arthritic shoulders. *The Journal of bone and joint surgery. American*. 2018; 100 (1) 57–65. DOI: 10.2106/jbjs.16.01122
5. Bryce CD, Davison AC, Lewis GS, Wang L, Flemming DJ, Armstrong AD. Two-dimensional glenoid version measurements vary with coronal and sagittal scapular rotation. *JBJS*. 2010; 92 (3) 692–699.
6. Budge MD, Lewis GS, Schaefer E, Coquia S, Flemming DJ, Armstrong AD. Comparison of standard two-dimensional and three-dimensional corrected glenoid version measurements. *Journal of Shoulder and Elbow Surgery*. 2011; 20 (4) 577–583. DOI: 10.1016/j.jse.2010.11.003 [PubMed: 21324716]
7. Choi CH, Kim HC, Kang D, Kim JY. Comparative study of glenoid version and inclination using two-dimensional images from computed tomography and three-dimensional reconstructed bone models. *Clinics in shoulder and elbow*. 2020; 23 (3) 119–124. DOI: 10.5397/cise.2020.00220 [PubMed: 33330245]
8. Cunningham G, Freebody J, Smith MM, Taha ME, Young AA, Cass B, Giuffre B. Comparative analysis of 2 glenoid version measurement methods in variable axial slices on 3-dimensionally

- reconstructed computed tomography scans. *Journal of shoulder and elbow surgery*. 2018; 27 (10) 1809–1815. DOI: 10.1016/j.jse.2018.03.016 [PubMed: 29778592]
9. Doel T, Thompson S, Dowrick T, Ahmad M, Clarkson M. Python template. 2022; doi: 10.5281/zenodo.5879146
 10. Dowrick T, Ahmad M, Thompson S, Hetherington J, Cooper J, Clarkson M. Cmakecatchtemplate: A c++ template project. *Journal of Open Research Software*. 2021; 9 (1) doi: 10.5334/jors.319
 11. Friedman R, Hawthorne K, Genes B. The use of computerized tomography in the measurement of glenoid version. *The Journal of bone and joint surgery. American*. 1992; 74 (7) 1032–1037. [PubMed: 1522089]
 12. Fu Y, Brown NM, Saeed SU, Casamitjana A, Baum ZMc, Delaunay R, Yang Q, Grimwood A, Min Z, Blumberg SB, Iglesias JE, et al. Deepreg: a deep learning toolkit for medical image registration. *Journal of Open Source Software*. 2020; 5 (55) 2705 doi: 10.21105/joss.02705
 13. Ganapathi A, McCarron JA, Chen X, Iannotti JP. Predicting normal glenoid version from the pathologic scapula: a comparison of 4 methods in 2- and 3-dimensional models. *Journal of shoulder and elbow surgery*. 2011; 20 (2) 234–244. DOI: 10.1016/j.jse.2010.05.024 [PubMed: 20933439]
 14. Harris CR, Millman KJ, van der Walt SJ, Gommers R, Virtanen P, Cournapeau D, Wieser E, Taylor J, Berg S, Smith NJ, Kern R, et al. Array programming with NumPy. *Nature*. 2020; 585: 357–362. DOI: 10.1038/s41586-020-2649-2 [PubMed: 32939066]
 15. Kikinis, R, Pieper, SD, Vosburgh, KG. 3D Slicer: A Platform for Subject-Specific Image Analysis, Visualization, and Clinical Support. Springer New York; New York NY: 2014. 277–289.
 16. Matsumura N, Ogawa K, Ikegami H, Collin P, Walch G, Toyama Y. Computed tomography measurement of glenoid vault version as an alternative measuring method for glenoid version. *Journal of orthopaedic surgery and research*. 2014; 9 (1) 17 doi: 10.1186/1749-799x-9-17 [PubMed: 24618285]
 17. Moineau G, Levigne C, Boileau P, Young A, Walch G. French Society for Shoulder and Elbow (SOFEC). Three-dimensional measurement method of arthritic glenoid cavity morphology: feasibility and reproducibility. *Orthopaedics and traumatology, surgery and research : OTSR*. 2012; 98 (6 Suppl) S139–45. DOI: 10.1016/j.otsr.2012.06.007
 18. Nyffeler RW, Jost B, Pfirrmann CW, Gerber C. Measurement of glenoid version: conventional radiographs versus computed tomography scans. *Journal of shoulder and elbow surgery*. 2003; 12 (5) 493–496. [PubMed: 14564275]
 19. Olafsdottir A, Thompson S. Scikit-surgeryglenoid. 2022; doi: 10.5281/zenodo.5901818
 20. Schneider C, Thompson S, Totz J, Song Y, Allam M, Sodergren M, Desjardins A, Barratt D, Ourselin S, Gurusamy K, et al. Comparison of manual and semi-automatic registration in augmented reality image-guided liver surgery: a clinical feasibility study. *Surgical endoscopy*. 2020; 34 (10) 4702–4711. DOI: 10.1007/s00464-020-07807-x [PubMed: 32780240]
 21. Schroeder, W, Martin, KM, Lorensen, WE. *The Visualization Toolkit (2Nd Ed.): An Object-oriented Approach to 3D Graphics*. Prentice-Hall, Inc; Upper Saddle River, NJ USA: 1998.
 22. Schroeder, WJ; Ibáñez, L; Martin, KM. Software process: the key to developing robust, reusable and maintainable open-source software; 2004 2nd IEEE International Symposium on Biomedical Imaging: Nano to Macro (IEEE Cat No. 04EX821); 2004. 648–651.
 23. Shapey J, Dowrick T, Delaunay R, Mackle EC, Thompson S, Janatka M, Guichard R, Georgoulas A, Pérez-Suárez D, Bradford R, Saeed SR, et al. Integrated multi-modality image-guided navigation for neurosurgery: open-source software platform using state-of-the-art clinical hardware. *International journal of computer assisted radiology and surgery*. 2021; 16 (8) 1347–1356. DOI: 10.1007/s11548-021-02374-5 [PubMed: 33937966]
 24. Shukla DR, McLaughlin RJ, Lee J, Nguyen NTV, Sanchez-Sotelo J. Automated three-dimensional measurements of version, inclination, and subluxation. *Shoulder & elbow*. 2020; 12 (1) 31–37. DOI: 10.1177/1758573218825480
 25. Sprowls GR, Wilson CD, Stewart W, Hammonds KAP, Baruch NH, Ward RA, Robin BN. Intraoperative navigation and preoperative templating software are associated with increased glenoid base-plate screw length and use of augmented base-plates in reverse total shoulder

- arthroplasty. *JSES international*. 2021; 5 (1) 102–108. DOI: 10.1016/j.jseint.2020.09.003 [PubMed: 33554174]
26. Thompson, S; Dowrick, T; Ahmad, M; Opie, J; Clarkson, MJ. Are fiducial registration error and target registration error correlated? *scikit-surgery* for teaching and research; *Medical Imaging 2021: Image-Guided Procedures, Robotic Interventions, and Modeling*; 2021.
 27. Thompson S, Dowrick T, Ahmad M, Xiao G, Koo B, Bonmati E, Kahl K, Clarkson MJ. *Scikit-surgery: compact libraries for surgical navigation*. *International journal of computer assisted radiology and surgery*. 2020; 15 (7) 1075–1084. DOI: 10.1007/s11548-020-02180-5 [PubMed: 32436132]
 28. Thompson S, Dowrick T, Xiao G, Ramalinho J, Robu M, Ahmad M, Taylor D, Clarkson M. *Snappysonic: An ultrasound acquisition replay simulator*. *Journal of Open Research Software*. 2020; 8 (1) doi: 10.5334/jors.289
 29. Wong B. Points of view: Color blindness. *Nature methods*. 2011; 8: 441. doi: 10.1038/nmeth.1618 [PubMed: 21774112]

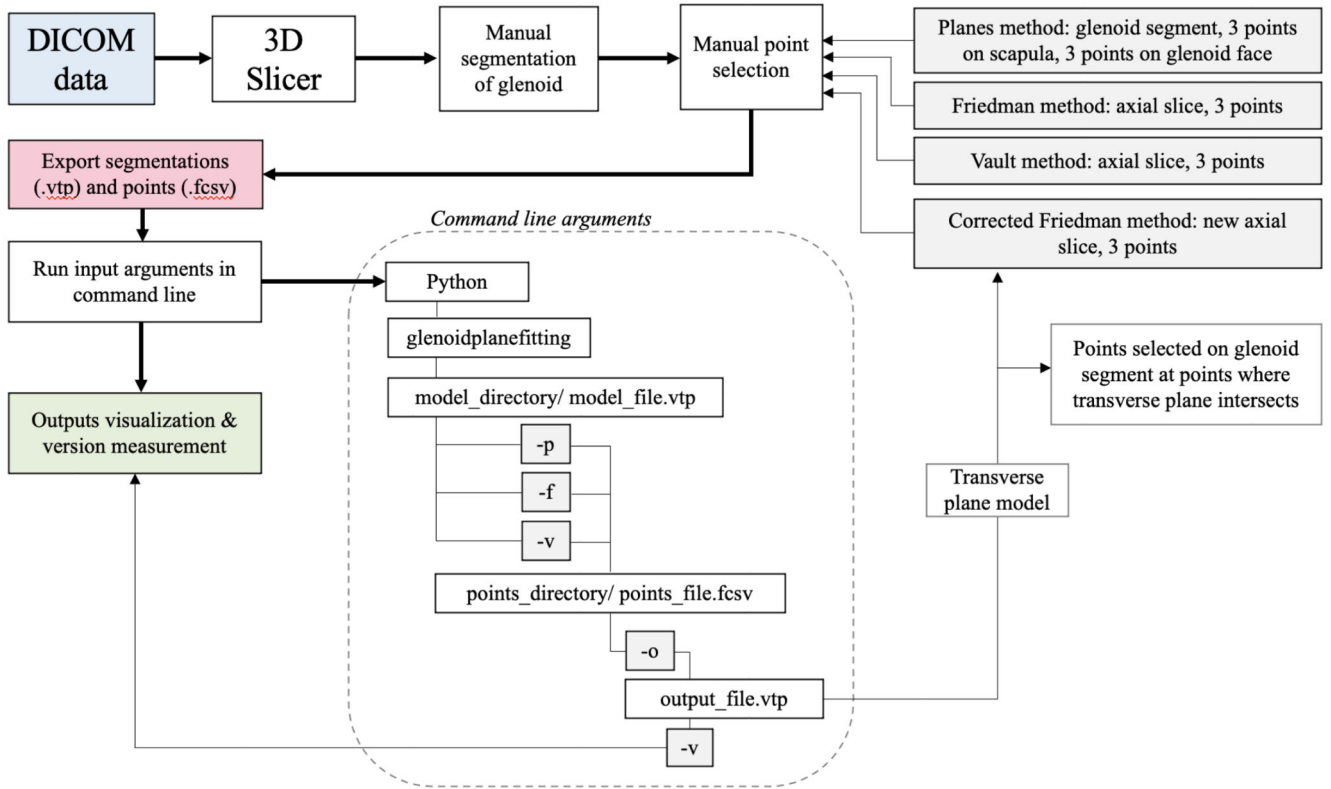


Figure 1.

A workflow diagram describing the current workflow. Relevant landmarks are currently identified using 3DSlicer and passed to SciKit-SurgeryGlenoid via the command line. For the corrected Friedman method the points are manually identified a second time after identification of the new axial slice.

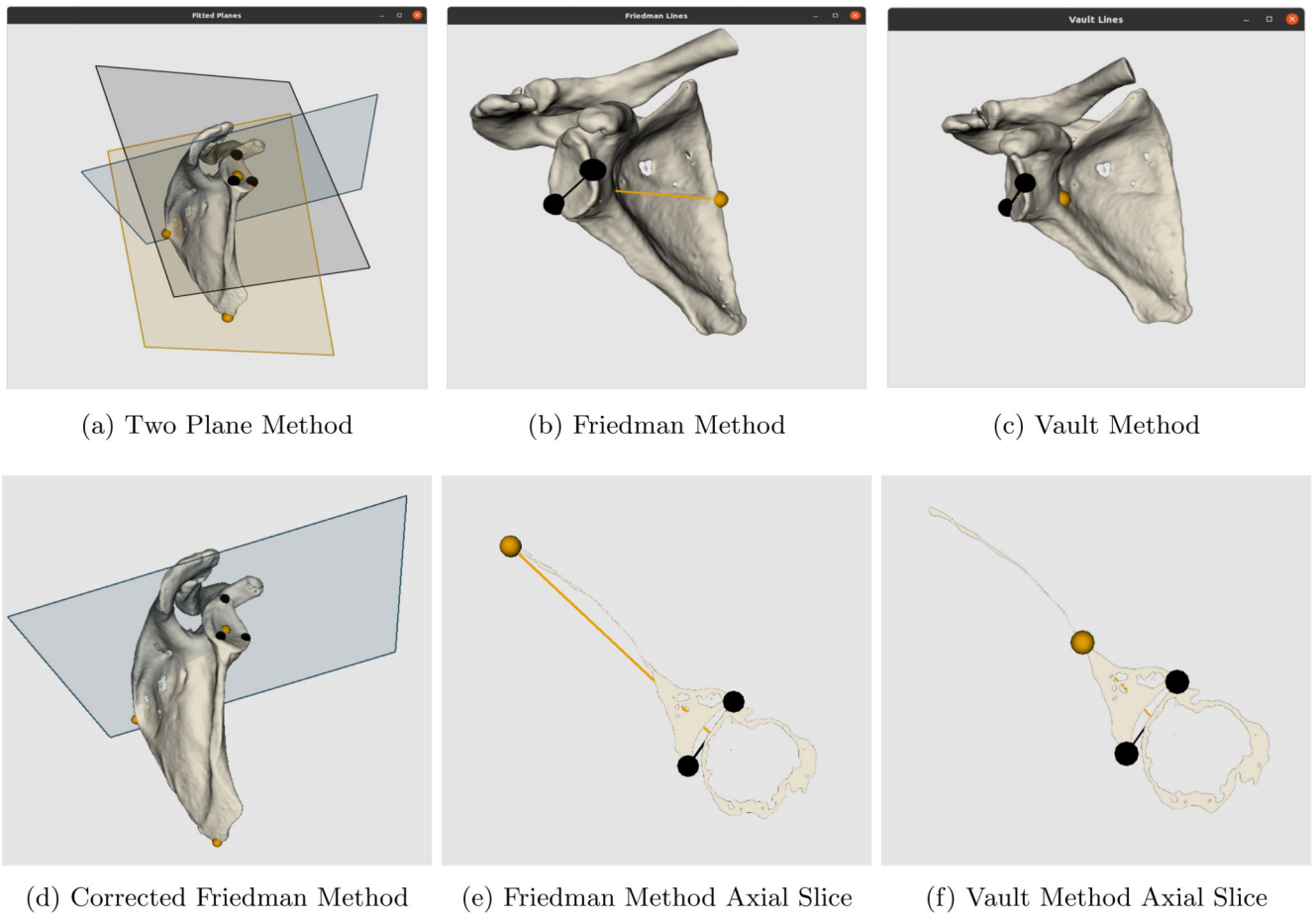


Figure 2.

Visualisations of the 2 plane, Friedman and Vault methods and of new axial slice plane used for corrected Friedman method. Additional visualisations of the axial slices of the Friedman and vault methods to show point selection. By default, SciKit-SurgeryGlenoid uses the colour blind friendly palette defined by Wong²⁹

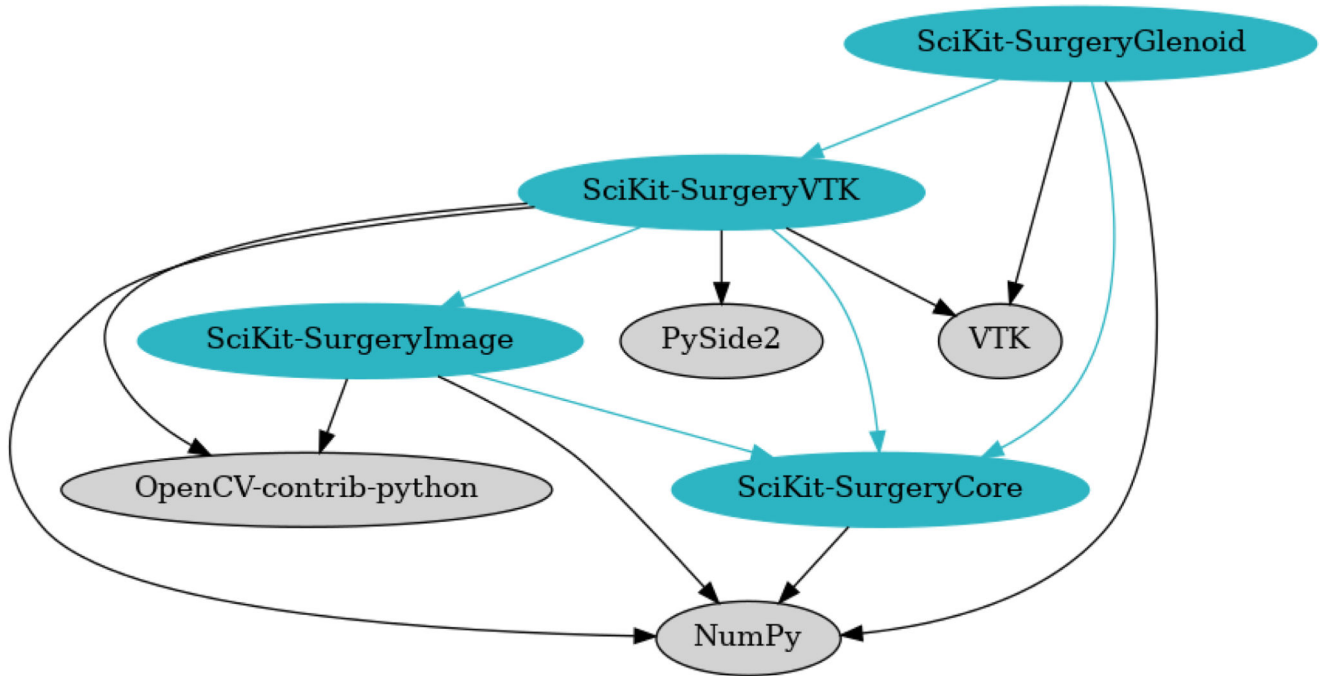
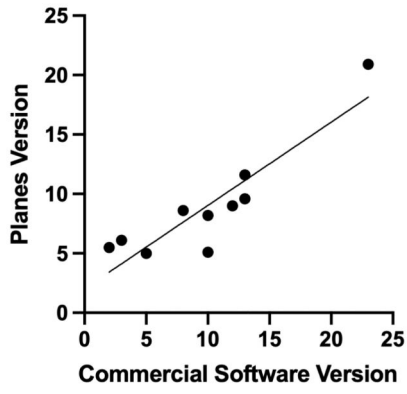
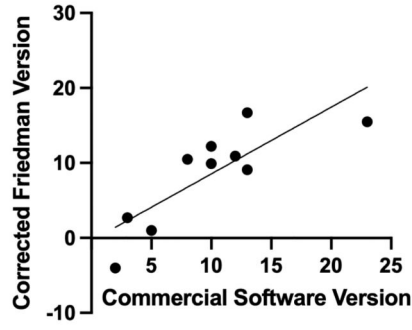


Figure 3.

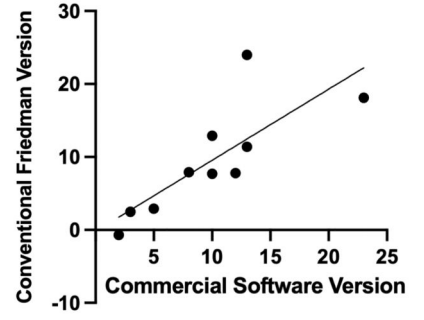
The dependency graph for SciKit-SurgeryGlenoid. SciKit-Surgery dependencies are shown in blue, whilst 3rd party dependencies are shown in grey.



(a) Two Planes Method



(b) Corrected Friedman Method



(c) Friedman Method

Figure 4. The Pearson correlation between the commercial software and the 3 methods that gave a statistically significant result.

Table 1
A comparison of the results of each method tested on 10 retrospective patients

| Method | Mean Version | Standard Deviation |
|---------------------|---------------------|---------------------------|
| Two Planes | 8.9° | 4.7° |
| Corrected Friedman | 8.4° | 6.5° |
| Friedman | 9.4° | 7.4° |
| Vault | 12.3° | 7.7° |
| Commercial software | 9.9° | 6.1° |