




# Impairment of the mitochondrial one-carbon metabolism enzyme SHMT2 causes a novel brain and heart developmental syndrome

Àngels García-Cazorla<sup>1,2</sup> · Edgard Verdura<sup>2,3</sup> · Natalia Juliá-Palacios<sup>1,2</sup> · Eric N. Anderson<sup>4</sup> · Leire Goicoechea<sup>2,3</sup> · Laura Planas-Serra<sup>2,3</sup> · Enkhtuul Tsogtbaatar<sup>5,6,7</sup> · Nikita R. Dsouza<sup>8</sup> · Agatha Schlüter<sup>2,3</sup> · Roser Urreiziti<sup>2,9</sup> · Jessica M. Tarnowski<sup>10,11</sup> · Ralitz H. Gavrilova<sup>10,11</sup> · SHMT2 Working Group · Montserrat Ruiz<sup>2,3</sup> · Agustí Rodríguez-Palmero<sup>2,3,12</sup> · Stéphane Fourcade<sup>2,3</sup> · Benjamin Cogné<sup>13</sup> · Thomas Besnard<sup>13</sup> · Marie Vincent<sup>13</sup> · Stéphane Bézieau<sup>13</sup> · Clifford D. Folmes<sup>5,6,7</sup> · Michael T. Zimmermann<sup>8,14</sup> · Eric W. Klee<sup>10,15,16</sup> · Udai Bhan Pandey<sup>4</sup> · Rafael Artuch<sup>2,9</sup> · Margot A. Cousin<sup>15,16</sup> · Aurora Pujol<sup>2,3,17</sup> 

Received: 18 June 2020 / Revised: 31 August 2020 / Accepted: 31 August 2020 / Published online: 5 October 2020  
© The Author(s) 2020

**Keywords** SHMT2 · Mitochondrial one-carbon metabolism · Congenital microcephaly · Perisylvian polymicrogyria · Cardiomyopathy

---

The members of SHMT2 Working Group are listed in the Acknowledgements section.

---

Àngels García-Cazorla and Edgard Verdura contributed equally to this study.

---

Margot A. Cousin and Aurora Pujol contributed equally to this study.

---

**Electronic supplementary material** The online version of this article (<https://doi.org/10.1007/s00401-020-02223-w>) contains supplementary material, which is available to authorized users.

---

✉ Àngels García-Cazorla  
agarcia@sjdhospitalbarcelona.org

✉ Aurora Pujol  
apujol@idibell.cat

- <sup>1</sup> Neurometabolic Unit and Synaptic Metabolism Lab, Neurology Department, Institut Pediàtric de Recerca, Hospital Sant Joan de Déu, and MetabERN, 08950 Barcelona, Catalonia, Spain
- <sup>2</sup> Centre for Biomedical Research on Rare Diseases (CIBERER), Instituto de Salud Carlos III, 28029 Madrid, Spain
- <sup>3</sup> Neurometabolic Diseases Laboratory, Bellvitge Biomedical Research Institute (IDIBELL), L'Hospitalet de Llobregat, 08908 Barcelona, Catalonia, Spain
- <sup>4</sup> Department of Pediatrics, Children's Hospital of Pittsburgh, University of Pittsburgh School of Medicine, Pittsburgh, PA 15224, USA
- <sup>5</sup> Department of Cardiovascular Medicine, Mayo Clinic, Scottsdale, AZ 85260, USA

- <sup>6</sup> Department of Biochemistry and Molecular Biology, Mayo Clinic, Scottsdale, AZ 85260, USA
- <sup>7</sup> Department of Molecular Pharmacology and Experimental Therapeutics, Mayo Clinic, Scottsdale, AZ 85260, USA
- <sup>8</sup> Bioinformatics Research and Development Laboratory, Genomic Sciences and Precision Medicine Center, Medical College of Wisconsin, Milwaukee, WI 53226, USA
- <sup>9</sup> Clinical Biochemistry Department, Institut de Recerca Sant Joan de Déu, and MetabERN, 08950 Barcelona, Catalonia, Spain
- <sup>10</sup> Department of Clinical Genomics, Mayo Clinic, Rochester, MN 55905, USA
- <sup>11</sup> Department of Neurology, Mayo Clinic, Rochester, MN 55905, USA
- <sup>12</sup> Department of Pediatrics, Paediatric Neurology Unit, University Hospital Germans Trias i Pujol, 08916 Badalona, Catalonia, Spain
- <sup>13</sup> Service de Génétique Médicale, CHU de Nantes, and INSERM, CNRS, Université de Nantes, l'Institut du Thorax, Nantes, 44000 Nantes, Pays de la Loire, France
- <sup>14</sup> Clinical and Translational Science Institute, Medical College of Wisconsin, Milwaukee, WI 53226, USA
- <sup>15</sup> Center for Individualized Medicine, Mayo Clinic, Rochester, MN 55905, USA
- <sup>16</sup> Department of Health Sciences Research, Mayo Clinic, Rochester, MN 55905, USA
- <sup>17</sup> Catalan Institution of Research and Advanced Studies (ICREA), 08010 Barcelona, Catalonia, Spain

Inborn errors of metabolism cause a wide spectrum of neurodevelopmental and neurodegenerative conditions [15]. A pivotal enzyme located at the intersection of the amino acid and folic acid metabolic pathways is SHMT2, the mitochondrial form of serine hydroxymethyltransferase. SHMT2 performs the first step in a series of reactions that provide one-carbon units covalently bound to folate species in mitochondria: it transfers one-carbon units from serine to tetrahydrofolate (THF), generating glycine and 5,10-methylene-THF [4, 11, 12].

Using whole exome sequencing (WES), we identified biallelic *SHMT2* variants in five individuals from four different families. All identified variants were located in conserved residues, either absent or extremely rare in control databases (gnomAD, ExAC), and cosegregated based on a recessive mode of inheritance ( $p_{\text{Rec}}=0.9918$  for this gene) (Supplementary Figs. 1–3, Supplementary Table 1). In family F1, a homozygous missense variant present in two affected siblings was located in a region without heterozygosity (~10 Mb, the only region > 1 Mb shared by both siblings) in which no other candidate variants were found, providing a strong genetic evidence of causality for these variants. The missense/in-frame deletion nature of these variants, and the absence of loss-of-function homozygous individuals in control databases, combined with the fact that complete loss of SHMT2 is embryonic lethal in the mouse [18], suggested that these variants may cause hypomorphic effects. Using 3D molecular dynamics models of the SHMT2 protein, we concluded that these candidate variants probably alter the SHMT2 oligomerization process, and/or disrupt the conformation of the active site, thus inducing deleterious effects on SHMT2 enzymatic function (Supplementary Figs. 4–8, Supplementary Tables 2–3, Supplementary video) [8, 19].

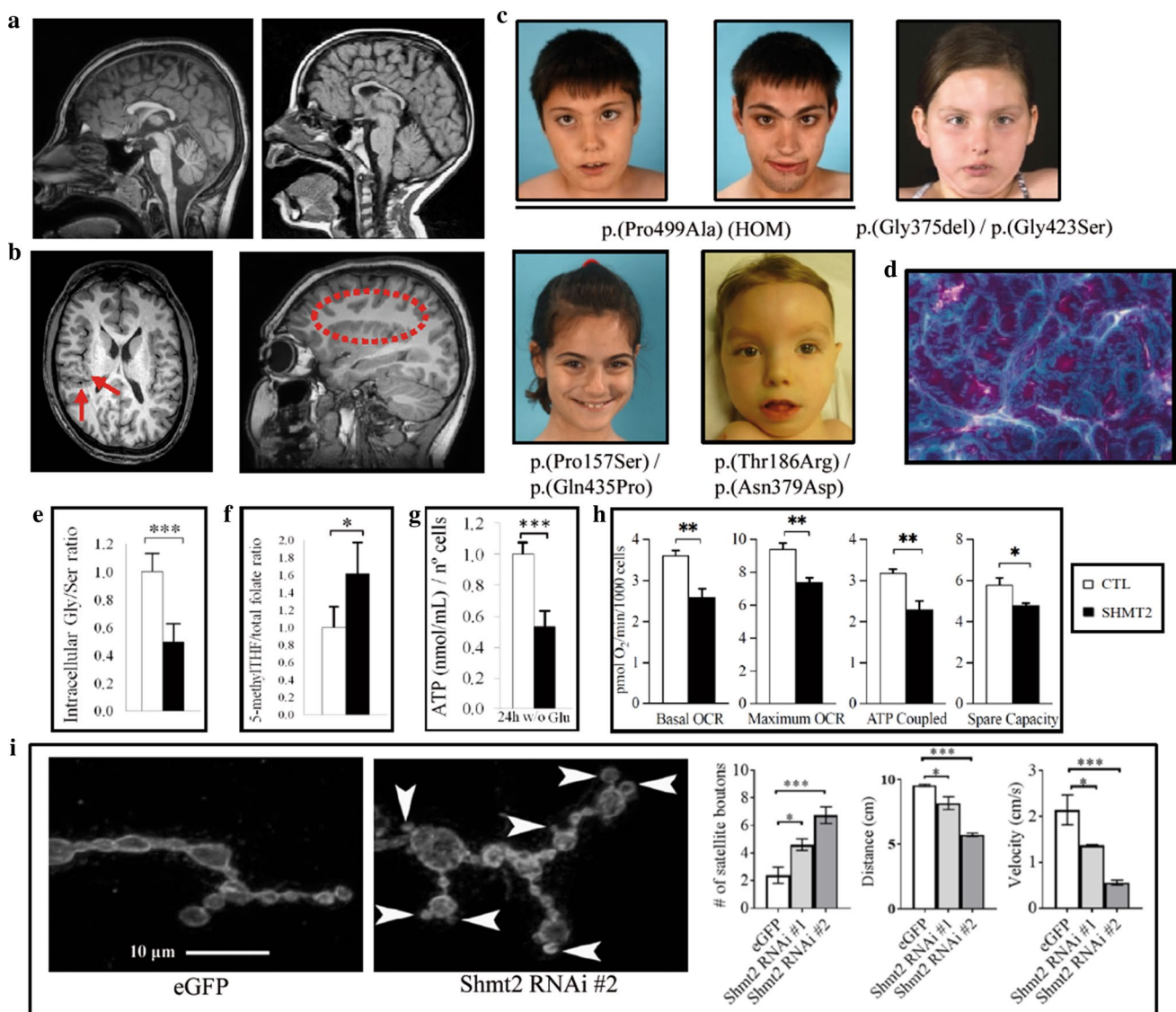
All patients presented a similar phenotype, characterized by dysmorphic features including long palpebral fissures, eversion of lateral third of lower eyelids, arched eyebrows, long eyelashes, thin upper lip, long philtrum, short fifth finger, fleshy pads at the tips of the fingers, mild 2–3 toe syndactyly and low-set thumbs. All patients exhibited intellectual disability and motor dysfunction, in the form of spastic paraparesis, ataxia, and/or peripheral neuropathy. Also, four out of five patients showed hypertrophic cardiomyopathy or atrial-septal defects, which tend to progress over time. All of the patients showed congenital microcephaly; MRI revealed corpus callosum abnormalities in all patients and perisylvian polymicrogyria-like pattern in patients P1–P4 (Fig. 1a–c, Supplementary Figs. 9–11, Supplementary Table 4). Quadriceps muscle and myocardium biopsies from Patient 4 showed myopathic changes, and myocardium biopsy showed

the presence of “ragged red” fibers, suggestive of defective mitochondria (Fig. 1d, Supplementary Fig. 12).

To assess the pathogenicity of SHMT2 variants, we pursued functional testing with patient-derived primary fibroblasts. SHMT2 protein levels in fibroblasts were not significantly altered (Supplementary Fig. 13). While all metabolites were in the normal range in plasma, fibroblasts from affected individuals showed a significant decrease in glycine/serine ratios compared to controls. Folate metabolism was also impaired: 5-methyltetrahydrofolate levels were increased in patients in relation to total folate (Fig. 1e, f). The substrate of SHMT2 tetrahydrofolate (THF) was undetectable in mitochondria-enriched control fibroblast samples, but low levels of this molecule were detectable in extracts from patient fibroblasts (Supplementary Table 5). These data support the impairment of SHMT2 enzymatic function in these patients. Because folate and serine are required for proper mitochondrial translation [11, 12], we verified levels of mitochondrial OXPHOS complexes, which did not vary (Supplemental Fig. 14).

Next we analyzed bioenergetic and mitochondrial function in patients' fibroblasts, which were described to be impaired in knockout human cancer cell lines [11, 12]. ATP measurements, as well as extracellular flux analysis in a Seahorse device, under glucose restriction conditions, indicated an impaired oxidative capacity in patients' cells relative to controls (Fig. 1g, h, Supplementary Fig. 15). Mitochondrial membrane potential was found to be altered, as well as ROS levels (both total and mitochondrial), supporting mitochondrial redox metabolism malfunction (Supplementary Fig. 16).

In previous works, *Shmt2* knockout mice exhibited embryonic lethality, attributed to severe mitochondrial respiration defects in fetal liver, and ensuing inhibition of erythroblast differentiation resulting in anemia. Moreover, metabolic defects were not observed in brain tissue, possibly due to the preferential use of the glycine cleavage system to provide one-carbon units [17]. To investigate whether the patients' neurological phenotype could be mediated by non-neuronal autonomous mechanisms, we knocked down *Shmt2* specifically in *Drosophila* motor neurons (~65% knockdown of *Shmt2* RNA as shown previously by qPCR) [3]. We analyzed the morphology of presynaptic terminals at neuromuscular junctions (NMJs), which reliably model excitatory synapses in the mammalian brain and spinal cord [2]. While no changes in the numbers of total boutons or mature boutons were observed in *Shmt2*-knockdown animals compared with eGFP controls, we found a significant increase in the numbers of satellite boutons, emerging from the main nerve terminal or budding excessively from primary boutons and



**Fig. 1** SHMT2-mutated patients: phenotype and functional evaluation in fibroblasts. **a** Sagittal T1-weighted MRI planes showing corpus callosum hypoplasia in Patient P1 (left) and Patient P4 (right). **b** Axial T1-weighted MRI planes (left) in Patient P2 showing perisylvian polymicrogyria (PMG) visible around both Sylvian fissures and insulae (arrows) and right parasagittal T1-weighted MRI (dotted contour). Note the stippled gray-white boundary of the polymicrogyric cortex compared to the smooth gray-white boundary in normal cortical areas. **c** Dysmorphic features in Patients P1–P5. **d** Modified Gomori trichrome staining of Patient 4 myocardium biopsy sample showed the presence of “ragged red” fibers, consistent with a mitochondrial cytopathy. **e** Quantification of Gly/Ser ratio in fibroblasts from control individuals (CTL,  $n=6$ ) and patients (SHMT2,  $n=5$ ). **f** 5'-Methyl THF (tetrahydrofolate) normalized to total folate levels in fibroblasts from control individuals (CTL,  $n=5$ ) and patients (SHMT2,  $n=5$ ). **g** Measure of ATP concentration in control individuals (CTL,  $n=6$ ) and patients (SHMT2,  $n=5$ ) fibroblasts after 24-h incubation in a

medium without glucose. Values were normalized by number of cells. Quantification depicted as fold change to control fibroblasts. **h** Quantification of mitochondrial oxygen consumption rates (OCR, pmol  $O_2$ /min/1000 cells) in control individuals (CTL,  $n=5$ ) and patients (SHMT2,  $n=4$ ). **i** *Shmt2* knockdown in motoneurons cause neuromuscular junction (NMJ) and motility defects in *Drosophila*. Left: immunofluorescence images of the neuromuscular junctions of muscle 4 segment A2–A3 stained with the presynaptic marker horseradish peroxidase (HRP, arrowhead). Right: quantification of the average number of satellite boutons, climbing distance and velocity in control (eGFP) and mutant (Shmt2 RNAi #1, #2) flies ( $n=15-18$  for boutons,  $n=30$  for distance and velocity). In **e–h**, values are expressed as mean  $\pm$  SD, and two-tailed Student *t* tests were performed; in **i**, values are expressed as mean  $\pm$  SEM, and one-way ANOVA with Tukey’s multiple comparisons test was performed (\* $p < 0.05$ , \*\* $p < 0.01$ , \*\*\* $p < 0.001$ ).

forming clusters (Fig. 1i, Supplementary Fig. 17). Of note, previous studies have shown increased satellite boutons in *Drosophila* models for Amyotrophic Lateral Sclerosis and Spastic Paraplegia [7, 16]. Moreover, mutant flies showed reduced climbing distance and velocity compared to eGFP control animals (Fig. 1i). These results may reflect a role for human SHMT2 in the maintenance of presynaptic vesicles, and can be attributed to a selective decrease of Shmt2 in neurons, without any significant systemic interfering effects. Thus, these studies argue against non-cell autonomous mechanisms from the periphery causing neuronal malfunction in patients.

Interestingly, this novel rare disease entity corresponds faithfully to an intersection of diverse clinical manifestations associated with defects in metabolic pathways in which SHMT2 plays a crucial role, such as amino acid and folate metabolism and mitochondrial homeostasis [4, 11, 12]. SHMT2 impairment alters intracellular glycine/serine levels, which provides the main source of mitochondrial one-carbon units in proliferating cells, and thus probably contributes to microcephaly and polymicrogyria [9, 10, 13]. Microcephaly associated with hypomyelination is also seen in patients with loss of PYCR2, an enzyme of proline synthesis which interacts with SHMT2, causing hyperglycinemia, underscoring the impact of dysregulated glycine/serine levels on neurodevelopment [6]. SHMT2 malfunction also depletes a downstream product species, 5,10-methylTHF, required for nucleotide metabolism [1, 5]. Microcephaly, developmental delay/intellectual disability and cardiomyopathy have been extensively described in defects of folate metabolism [14]. In summary, we describe a novel neurodevelopmental, syndromic encephalopathy and movement disorder associated with cardiac defects. Despite a certain degree of variable severity, clinical manifestations were consistent in all individuals and thus establish a well-defined and recognizable clinical syndrome of defective folate and amino acid metabolism.

**Acknowledgements** We are indebted to the families who participated in this study. We thank CERCA Program/Generalitat de Catalunya for institutional support. We thank Cristina Guilera and Juanjo Martínez for excellent technical assistance at Neurometabolic Diseases Lab. We thank the Mayo Clinic Mitochondrial Disease Center for excellent support. This study was supported by the Centre for Biomedical Research on Rare Diseases (CIBERER) [ACCI14-759], [ACCI19-26], the URDCat program (PERIS SLT002/16/00174), the Fondo de Investigación Sanitaria FIS P117/00916 (ISCIII) (co-funded by European Regional Development Fund. ERDF, a way to build Europe), the Hesperia Foundation, and the Secretary for Universities and Research of the Ministry of Business and Knowledge of the Government of Catalonia [2017SGR1206] to AP. AGC and NJP were funded by Fondo de Investigación Sanitaria (FIS) P118/00111 (Instituto de Salud Carlos III: ISCIII and “Fondo Europeo de desarrollo regional” FEDER). RA was funded by FIS P117/00109 (ISCIII). EV was funded by grants from the Ministerio de Economía, Industria y Competitividad (Juan de

la Cierva program FJCI-2016-28811) and Instituto de Salud Carlos III (Sara Borrell program, CD19/00221). SF was funded by the Instituto de Salud Carlos III [Miguel Servet program CP116/00016, co-funded by European Social Fund. ESF investing in your future]. MR was funded by CIBERER. LPS and AJP were funded by predoctoral grants from the Instituto de Salud Carlos III (PFIS, FI18/00141 and FI18/00253). EK and MC were funded by the Center for Individualized Medicine at Mayo Clinic. ET and CF were funded by a grant from the NIH (HL121079), the Anne Dash Weinman Fund in Cardiovascular Research Honoring Steven J. Lester, and the Nasser Al-Rashid Fund for Research in Cardiovascular Diseases. AP and EWK are members of the Undiagnosed Diseases Network International (UDNI). We are indebted to the “Biobanc de l’Hospital Infantil Sant Joan de Déu per a la Investigació” integrated in the Spanish Biobank Network of ISCIII for the sample and data procurement of patient 3. MZ and ND were supported in part by The Linda T. and John A. Mellowes Endowed Innovation and Discovery Fund and the Genomic Sciences and Precision Medicine Center of Medical College of Wisconsin.

**SHMT2 Working Group:** Alfonso Oyarzábal, Inés Medina, Aida Ormazábal, Jordi Muchart, Juan Manuel Carretero, Cristina Jou, Mireia del Toro, Andrés Nascimento, Abraham J. Paredes, Delia Yubero, Roser Colomé. Neurometabolic Unit and Synaptic Metabolism Lab, Neurology Department, Institut Pediàtric de Recerca, Hospital Sant Joan de Déu, and MetabERN, 08950, Barcelona, Catalonia, Spain: AIOy, IM, AiOr, JM, JMC, RC. Centre for Biomedical Research on Rare Diseases (CIBERER), Instituto de Salud Carlos III, 28029, Madrid, Spain: AIOy, AiOr, CJ, AJP, DY, RC. Pathology Department, Institut de Recerca Sant Joan de Déu, and MetabERN, 08950, Barcelona, Catalonia, Spain: CJ. Pediatric Neurology Department, Vall d’Hebron University Hospital, Universitat Autònoma de Barcelona, 08916, Barcelona, Spain: MdT. Neuromuscular Unit, Neurology Department, Institut Pediàtric de Recerca, Hospital Sant Joan de Déu, 08950, Barcelona, Catalonia, Spain: AN. Clinical Biochemistry and Genetics Departments, Institut de Recerca Sant Joan de Déu, and MetabERN, 08950, Barcelona, Catalonia, Spain: AJP, DY.

**Author contributions** Conceptualization: AGC, EV, MAC, and AP. Funding acquisition: AGC, SB, EWK, SF, UP, RA, MAC, and AP. Performed research and experiments: AGC, EV, NJP, ENA, LG, ET, NRD, AS, RU, LPS, JMT, RHG, SWG, MR, SF, ARP, BC, TB, MV, CF, MTZ, UP, and RA. Supervision: AGC, RA, MAC, and AP. Writing of the original draft: AGC, EVP, MAC, and AP. All authors contributed to revising the manuscript.

## Compliance with ethical standards

**Conflict of interest** The authors have declared that no conflict of interest exists.

**Open Access** This article is licensed under a Creative Commons Attribution 4.0 International License, which permits use, sharing, adaptation, distribution and reproduction in any medium or format, as long as you give appropriate credit to the original author(s) and the source, provide a link to the Creative Commons licence, and indicate if changes were made. The images or other third party material in this article are included in the article’s Creative Commons licence, unless indicated otherwise in a credit line to the material. If material is not included in the article’s Creative Commons licence and your intended use is not permitted by statutory regulation or exceeds the permitted use, you will need to obtain permission directly from the copyright holder. To view a copy of this licence, visit <http://creativecommons.org/licenses/by/4.0/>.

## References

- Acuna-Hidalgo R, Schanze D, Kariminejad A, Nordgren A, Kariminejad MH, Conner P et al (2014) Neu-Laxova syndrome is a heterogeneous metabolic disorder caused by defects in enzymes of the L-serine biosynthesis pathway. *Am J Hum Genet* 95:285–293. <https://doi.org/10.1016/j.ajhg.2014.07.012>
- Budnik V (1996) Synapse maturation and structural plasticity at *Drosophila* neuromuscular junctions. *Curr Opin Neurobiol* 6:858–867. [https://doi.org/10.1016/s0959-4388\(96\)80038-9](https://doi.org/10.1016/s0959-4388(96)80038-9)
- Celardo I, Lehmann S, Costa AC, Loh SH, Martins LM (2017) DATF4 regulation of mitochondrial folate-mediated one-carbon metabolism is neuroprotective. *Cell Death Differ* 24:638–648. <https://doi.org/10.1038/cdd.2016.158>
- Ducker GS, Rabinowitz JD (2017) One-carbon metabolism in health and disease. *Cell Metab* 25:27–42. <https://doi.org/10.1016/j.cmet.2016.08.009>
- El-Hattab AW (2016) Serine biosynthesis and transport defects. *Mol Genet Metab* 118:153–159
- Escande-Beillard N, Loh A, Saleem SN, Kanata K, Hashimoto Y, Altunoglu U et al (2020) Loss of PYCR2 causes neurodegeneration by increasing cerebral glycine levels via SHMT2. *Neuron* 107:82–94.e6. <https://doi.org/10.1016/j.neuron.2020.03.028>
- Estes PS, Boehringer A, Zwick R, Tang JE, Grigsby B, Zarnescu DC (2011) Wild-type and A315T mutant TDP-43 exert differential neurotoxicity in a *Drosophila* model of ALS. *Hum Mol Genet* 20:2308–2321. <https://doi.org/10.1093/hmg/ddr124>
- Giardina G, Brunotti P, Fiascarelli A, Cicalini A, Costa MG, Buckle AM et al (2015) How pyridoxal 5'-phosphate differentially regulates human cytosolic and mitochondrial serine hydroxymethyltransferase oligomeric state. *FEBS J* 282:1225–1241. <https://doi.org/10.1111/febs.13211>
- De Koning TJ, Duran M, Dorland L, Gooskens R, Van Schaftingen E, Jaeken J et al (1998) Beneficial effects of L-serine and glycine in the management of seizures in 3-phosphoglycerate dehydrogenase deficiency. *Ann Neurol* 44:261–265. <https://doi.org/10.1002/ana.410440219>
- De Koning TJ, Klomp LWJ (2004) Serine-deficiency syndromes. *Curr Opin Neurol* 17:197–204
- Minton DR, Nam M, McLaughlin DJ, Shin J, Bayraktar EC, Alvarez SW et al (2018) Serine Catabolism by SHMT2 Is Required for Proper Mitochondrial Translation Initiation and Maintenance of Formylmethionyl-tRNAs. *Mol Cell* 69:610.e5–621.e5. <https://doi.org/10.1016/j.molcel.2018.01.024>
- Morscher RJ, Ducker GS, Li SH, Mayer JA, Gitai Z, Sperl W, Rabinowitz JD (2018) Mitochondrial translation requires folate-dependent tRNA methylation. *Nature* 554:128–132. <https://doi.org/10.1038/nature25460>
- Murtas G, Marcone GL, Sacchi S, Pollegioni L (2020) L-serine synthesis via the phosphorylated pathway in humans. *Cell Mol Life Sci*. <https://doi.org/10.1007/s00018-020-03574-z>
- Pope S, Artuch R, Heales S, Rahman S (2019) Cerebral folate deficiency: analytical tests and differential diagnosis. *J Inher Metab Dis* 42:655–672
- Saudubray J-M, Baumgartner M, Walter J (2016) Inborn metabolic diseases, diagnosis and treatment, 2016th edn. Springer, New York
- Sherwood NT, Sun Q, Xue M, Zhang B, Zinn K (2004) *Drosophila* spastin regulates synaptic microtubule networks and is required for normal motor function. *PLoS Biol*. <https://doi.org/10.1371/journal.pbio.0020429>
- Tani H, Mito T, Velagapudi V, Ishikawa K, Umehara M, Nakada K et al (2019) Disruption of the mouse *Shmt2* gene confers embryonic anaemia via foetal liver-specific metabolomic disorders. *Sci Rep* 9:16054. <https://doi.org/10.1038/s41598-019-52372-6>
- Tani H, Ohnishi S, Shitara H, Mito T, Yamaguchi M, Yonekawa H et al (2018) Mice deficient in the *Shmt2* gene have mitochondrial respiration defects and are embryonic lethal. *Sci Rep* 8:425. <https://doi.org/10.1038/s41598-017-18828-3>
- Walden M, Tian L, Ross RL, Sykora UM, Byrne DP, Hesketh EL et al (2019) Metabolic control of BRISC–SHMT2 assembly regulates immune signalling. *Nature* 570:194–199. <https://doi.org/10.1038/s41586-019-1232-1>

**Publisher's Note** Springer Nature remains neutral with regard to jurisdictional claims in published maps and institutional affiliations.