

Efficacy of bendamustine and rituximab in unfit patients with previously untreated chronic lymphocytic leukemia. Indirect comparison with ibrutinib in a real-world setting. A GIMEMA-ERIC and US study

Antonio Cuneo¹ | Anthony R. Mato²  | Gian Matteo Rigolin^{1*}  | Alfonso Piciocchi³ | Massimo Gentile⁴ | Luca Laurenti⁵ | John N. Allan⁶ | John M. Pagel⁷ | Danielle M. Brander⁸ | Brian T. Hill⁹ | Allison Winter⁹  | Nicole Lamanna¹⁰ | Constantine S. Tam¹¹ | Ryan Jacobs¹² | Frederick Lansigan¹³  | Paul M. Barr¹⁴ | Mazyar Shadman¹⁵ | Alan P. Skarbnik¹⁶ | Jeffrey J. Pu¹⁷  | Alison R. Sehgal¹⁸ | Stephen J. Schuster¹⁹ | Nirav N. Shah²⁰  | Chaitra S. Ujjani¹⁵ | Lindsey Roeker² | Ester Maria Orlandi²¹ | Atto Billio²² | Livio Trentin²³ | Martin Spacek²⁴ | Monia Marchetti²⁵  | Alessandra Tedeschi²⁶ | Fiorella Ilariucci²⁷ | Gianluca Gaidano²⁸ | Michael Doubek²⁹ | Lucia Farina³⁰ | Stefano Molica³¹  | Francesco Di Raimondo³² | Marta Coscia³³ | Francesca Romana Mauro³⁴  | Javier de la Serna³⁵ | Angeles Medina Perez³⁶ | Isacco Ferrarini³⁷ | Giuseppe Cimino³⁸ | Maurizio Cavallari¹ | Rosalba Cucci³ | Marco Vignetti³ | Robin Foà³⁴ | Paolo Ghia³⁹ | the GIMEMA, European Research Initiative (ERIC) on CLL, US study group

¹Hematology, Department of Medical Sciences, St. Anna University Hospital, Ferrara, Italy

²Division of Hematological Oncology, CLL Program, Memorial Sloan Kettering Cancer Center, New York, NY, USA

³Italian Group for Adult Hematologic Diseases (GIMEMA), Data Center and Health Outcomes Research Unit, Rome, Italy

⁴Department of Onco-Hematology, Hematology Unit, A.O. of Cosenza, Cosenza, Italy

⁵Department of Radiological, Radiotherapeutic and Hematological Sciences, Fondazione Policlinico Universitario "A. Gemelli" IRCCS, Rome, Italy

⁶Weill Cornell Medicine, New York, NY, USA

⁷Center for Blood Disorders and Stem Cell Transplantation, Swedish Cancer Institute, Seattle, WA, USA

⁸Division of Hematologic Malignancies and Cellular Therapy, Duke University, Durham, NC, USA

⁹Taussig Cancer Institute, Cleveland Clinic, Cleveland, OH, USA

¹⁰Columbia University Medical Center, New York, NY, USA

¹¹Peter McCallum Cancer Centre, University of Melbourne, Melbourne, Victoria, Australia

¹²Department of Hematologic Oncology and Blood Disorders, Levine Cancer Institute, Carolinas Healthcare System, Charlotte, NC, USA

¹³Dartmouth-Hitchcock Medical Center, Lebanon, NH, USA

¹⁴Wilmot Cancer Institute, University of Rochester Medical Center, Rochester, NY, USA

Antonio Cuneo, Anthony R. Mato and Gian Matteo Rigolin contributed equally.

Robin Foà and Paolo Ghia contributed equally.

This is an open access article under the terms of the Creative Commons Attribution License, which permits use, distribution and reproduction in any medium, provided the original work is properly cited.

© 2020 The Authors. *Cancer Medicine* published by John Wiley & Sons Ltd.

- ¹⁵Fred Hutchinson Cancer Research Center, Seattle Cancer Care Alliance, Seattle, WA, USA
- ¹⁶Lymphoproliferative Disorders Program, Novant Health Cancer Institute, Charlotte, NC, USA
- ¹⁷SUNY Upstate Medical University, SUNY Upstate Medical University, Syracuse, NY, USA
- ¹⁸University of Pittsburgh, Pittsburgh, PA, USA
- ¹⁹Division of Hematology and Oncology, University of Pennsylvania, Philadelphia, PA, USA
- ²⁰Division of Hematology & Oncology, Medical College of Wisconsin, Milwaukee, WI, USA
- ²¹Hematology Unit, IRCCS Policlinico San Matteo, Pavia, Italy
- ²²Hematology and Transplant Unit, San Maurizio Hospital, Azienda Sanitaria dell'Alto Adige, Bolzano, Italy
- ²³Hematology and Clinical Immunology, Department of Medicine, University of Padua, Padua, Italy
- ²⁴Department of Medicine, Department of Hematology, First Faculty of Medicine, Charles University and General University Hospital, Prague, Czech Republic
- ²⁵Oncology Unit, Cardinal Massaia Hospital, Asti, Italy
- ²⁶Hematology, Niguarda Cancer Center, ASST Grande Ospedale Metropolitano Niguarda, Milan, Italy
- ²⁷Hematology, Azienda USL-IRCCS, Reggio Emilia, Italy
- ²⁸Division of Hematology, Department of Translational Medicine, University of eastern Piedmont, Novara, Italy
- ²⁹Department of Internal Medicine - Hematology and Oncology, University Hospital Brno and Faculty of Medicine, Masaryk University, Brno, Czech Republic
- ³⁰Hematology Department, Fondazione IRCCS Istituto Nazionale Tumori, Milano, Italy
- ³¹Hematology Unit, A. Pugliese Hospital, Azienda Ospedaliera Pugliese Ciaccio, Catanzaro, Italy
- ³²Catania Università di Catania, Cattedra di Ematologia, Catania, Italy
- ³³Division of Hematology, A.O.U. Città della Salute e della Scienza di Torino and Department of Molecular Biotechnology and Health Sciences, University of Torino, Torino, Italy
- ³⁴Hematology, Department of Translational and Precision Medicine, "Sapienza" University, Rome, Italy
- ³⁵Hematology Unit, Hospital Universitario, Madrid, Spain
- ³⁶Hospital Costa del Sol, Marbella, Spain
- ³⁷Hematology, Department of Cell Therapy and Hematology, University Hospital, Verona, Italy
- ³⁸Department of Translational and Precision Medicine, University "La Sapienza", UOC di Ematologia con Trapianto, Ospedale S. Maria Goretti, Latina, Italy
- ³⁹Strategic Research Program on CLL, Division of Experimental Oncology, IRCCS Ospedale San Raffaele, Università Vita-Salute San Raffaele, Milan, Italy

Correspondence

Antonio Cuneo, Hematology, Department of Medical Sciences, St. Anna University Hospital, via Aldo Moro, 8 44124, Ferrara, Italy.

Email: cut@unife.it

Funding information

Ricerca Finalizzata, Grant/Award Number: RF-2011-02349712; Ministero della Salute, Grant/Award Number: 2015 ZMRFEA_004; Ministry of Health, Grant/Award Number: VFN64165

Abstract

Limited information is available on the efficacy of front-line bendamustine and rituximab (BR) in chronic lymphocytic leukemia (CLL) with reduced renal function or coexisting conditions. We therefore analyzed a cohort of real-world patients and performed a matched adjusted indirect comparison with a cohort of patients treated with ibrutinib. One hundred and fifty-seven patients with creatinine clearance (CrCl) <70 mL/min and/or CIRS score >6 were treated with BR. The median age was 72 years; 69% of patients had ≥ 2 comorbidities and the median CrCl was 59.8 mL/min. 17.6% of patients carried TP53 disruption. The median progression-free survival (PFS) was 45 months; TP53 disruption was associated with a shorter PFS ($P = 0.05$). The overall survival (OS) at 12, 24, and 36 months was 96.2%, 90.1%, and 79.5%, respectively. TP53 disruption was associated with an increased risk of death ($P = 0.01$). Data on 162 patients ≥ 65 years treated with ibrutinib were analyzed and compared with 165 patients ≥ 65 years treated with BR. Factors predicting for a longer PFS at multivariable analysis in the total patient population treated with BR and ibrutinib were age (HR 1.06, 95% CI 1.02-1.10, $P < 0.01$) and treatment with ibrutinib (HR 0.55, 95% CI 0.33-0.93, $P = 0.03$). In a post hoc analysis of patients in advanced

stage, a significant PFS advantage was observed in patient who had received ibrutinib ($P = 0.03$), who showed a trend for OS advantage ($P = 0.08$). We arrived at the following conclusions: (a) BR is a relatively effective first-line regimen in a real-world population of unfit patients without TP53 disruption, (b) ibrutinib provided longer disease control than BR in patients with advanced disease stage.

KEY WORDS

bendamustine, chronic lymphocytic leukemia, ibrutinib, real-world analysis, unfit patients

1 | INTRODUCTION

With 20,720 estimated new cases and 3930 deaths in 2019 in the United States, chronic lymphocytic leukemia (CLL) is the most frequent leukemia in western countries.¹ Because the median age at diagnosis is around 70 years and many patients carry one or more comorbidities, the most effective chemoimmunotherapy (CIT) regimen, fludarabine, cyclophosphamide, and rituximab (FCR), cannot be safely administered, thus making other options like a combination of the anti CD20 monoclonal antibody rituximab with bendamustine (BR) or chlorambucil² a widely employed therapeutic strategy in the clinical practice. The efficacy and safety of these combinations in the front-line setting have been documented in phase-2 and phase-3 trials including fit patients randomized to either FCR or BR,³⁻⁵ or patients deemed ineligible for fludarabine due to coexisting conditions and/or reduced renal function who were treated with chlorambucil and anti CD20 monoclonal antibodies.⁶⁻¹⁰ The BR combination was also tested in a limited number of patients not deemed fit to receive fludarabine-based regimens at physician's discretion⁹ and in older patients with preserved or moderately impaired renal function.¹¹

In recent years, evidence has been provided that a longer progression-free survival (PFS) can be achieved with ibrutinib than with CIT in previously untreated CLL¹⁰⁻¹² and expert opinions recommended ibrutinib upfront, especially in older patients with CLL and in younger patients with TP53 disruption or less favorable unfavorable immunogenetic characteristics, that is, unmutated configuration of the variable portion of the immunoglobulin (*IGHV*) gene.¹³⁻¹⁵

Interestingly, an observational study of CIT in the "real-world" setting showed that these regimens may prove safe and effective,¹⁶⁻¹⁸ even though dose reductions may occur commonly in clinical practice and may impact on outcome.¹⁹ Likewise, the rates of ibrutinib discontinuation and survival are likely to be worse in a real-world setting than in a clinical trial possibly due to inclusion of patients with poorer performance status and more comorbidities.²⁰⁻²² A matched-adjusted indirect comparison of patients who had received BR or ibrutinib as first salvage treatment outside of clinical trials showed no OS difference.¹⁷

Because limited information is available on the efficacy and safety of BR in unfit patients, we analyzed the efficacy of this regimen in a cohort treated outside clinical trials and we carried out an indirect comparison with a cohort of older patients treated with ibrutinib front-line in a real-world setting.²³

2 | METHODS

2.1 | Patients

The patients included in this report were retrospectively selected as outlined below from a cohort of patients treated front-line with BR between 2008 and 2014 at GIMEMA and European Research Initiative on CLL (ERIC) centers and from a cohort of CLL patients treated front-line with ibrutinib at 20 community and academic US centers.^{16,22}

2.2 | BR regimen in unfit CLL

Inclusion criteria in this analysis were (a) CLL progression according to the NCI criteria²⁴ (b) no previous treatment for CLL, (c) creatinine clearance <70 mL/min and/or CIRS > 6 , that is unfit patients as previously defined,⁶ (d) and received at least 1 day of treatment with the BR regimen.²⁵ Patients were excluded from the study if they had transformation of CLL into Richter's syndrome before starting treatment, known HIV infection, active and uncontrolled HCV and/or HBV infections. Treatment response and disease progression were assessed according to the NCI criteria.²⁴ The primary endpoint was 12-month progression-free survival (PFS). Secondary endpoints were overall response rate (ORR), time to next anti-leukemic treatment (TTNT), and overall survival (OS) as previously defined.¹⁷ Safety data were reported according to the NCI Common Terminology Criteria for Adverse Events version 4.0. The study was registered at ClinicalTrials.gov (NCT02491398). The study was approved by the institutional review board of each participating institution.

2.3 | Indirect comparison with ibrutinib

For the purpose of this analysis, we retrieved pertinent data by reviewing clinical charts, electronic medical records, and related databases in patients ≥ 65 years enrolled in the GIMEMA ERIC study who had received BR in first line and in patients ≥ 65 years of a US study who had received single agent ibrutinib.²² The patients with del(17p) or *TP53* mutations were excluded. The endpoints for this analysis were the PFS and OS.

2.4 | Statistical analysis

The analyses were performed following the intention-to-treat principle as previously described.¹⁷ All analyses were performed using the SAS software (version 9.4 or later); all tests were two-sided, at a significance level of 0.05. Study data were collected and managed using REDCap electronic data capture tools.²⁶ The data that support the findings of this study are available from the corresponding author upon reasonable request.

3 | RESULTS

3.1 | Treatment with BR in unfit patients

One hundred fifty-seven patients treated at 31 centers (24 GIMEMA centers and 7 ERIC centers) were included. The demographic data at baseline have been outlined in Table 1. The median age was 72 years; 80.9% of patients was >65 years; 69.2% had 2 or more comorbidities, the median creatinine clearance was 59.8 mL/min and 58.9% had Binet stage B-C. Fifty-one percent (data available in 56.7% of the patients) had an unmutated *IGHV* gene configuration, 17.6% carried 17p- and/or *TP53* mutation (data available in 83.4% of the patients).

One hundred and fourteen of 157 patients (73.1%) received the planned number of cycles; treatment was discontinued as a result of toxicity in 18% patients ($n = 28$), withdrawal of consent in 2% ($n = 3$), or other reasons in 7% ($n = 11$). The number of cycles actually administered to patients who discontinued treatment was ≥ 4 in 71% of cases. The starting dose of bendamustine was 90 mg/m² in 45.8% of the patients, 70 mg/m² in 33.1% of the patients and 50-70 mg/m² in 21.1% of the patients. A dose reduction $>10\%$ of the planned dose of bendamustine was recorded in 24.2% of cases; treatment delay occurred in 22.9% of patients.

Second-line treatment was offered at symptomatic progression according to local guidelines.

3.2 | Efficacy

The ORR to BR was 91.7%. The probability of attaining a response was significantly lower in patients with del(17p)/*TP53*

TABLE 1 Baseline characteristics of 157 patients in the bendamustine and rituximab (BR) cohort

Variable (n. of patients)	N. of patients (%)
age $\leq 65/>65$ years ($n = 157$)	30 (19.1)/127 (80.9)
median age (range) ($n = 157$)	72.5 (39-89)
stage ^a early/intermediate-advanced ($n = 129$)	53 (41.1)/76 (58.9)
gender male/female ($n = 157$)	95 (60.5)/62 (39.5)
ECOG PS 0/1/ ≥ 2 ($n = 154$)	68 (43.3)/70 (44.6)/ 16 (10.2)
N. of comorbidities 0-1/ ≥ 2 ($n = 156$)	48 (30.8)/108 (69.2)
Median Cr Cl ml/min (range) ($n = 157$)	59.8 (22.0-137.0)
beta 2 microglobulin $\geq 3.5/<3.5$ mg/L ($n = 113$)	94 (83.2)/19 (16.8)
<i>IGHV</i> Mutated/Unmutated ($n = 89$)	44 (49.4)/45 (50.6)
17p- and/or <i>TP53</i> mutated yes/no ($n = 131$)	23 (17.6)/108 (82.4)
FISH abns 13q-/+12/11q-/17p-/normal ($n = 111$)	34 (30.6)/24 (21.6)/10 (9.0)/7 (6.3)/36 (32.4)

Note: Legend: ECOG PS, Eastern Cooperative Oncology Group Performance Status; Cr Cl, Creatinine clearance.

^aEarly: Binet A.

mutations as compared to patients without del(17p)/*TP53* mutations (50% vs 85.1%, $P = 0.02$). Other variables had no significant impact on the ORR (Table S2).

The median PFS was 45 months (Figure 1(A)), with a 12-month PFS rate of 93% (95% CI 89.0%-97.1%). The estimated PFS at 24 and at 36 months were 81% (95% CI 74.5%-88.2%) and 66.8% (95% CI 74.5%-88.2%), respectively. Factors associated with a shorter PFS in univariate analysis were represented by del(17p)/*TP53* mutations, ECOG performance status and by the presence of 2 or more comorbidities, as shown in Table 2, whereas an intermediate/advanced stage and an *IGHV*-unmutated status were of borderline significance. Age (cut-off 65 years) and other clinicobiologic parameters had no impact on PFS. del(17p)/*TP53* mutations represented the only adverse parameter in multivariable analysis (Table 2, Figure 1(B)).

A second-line treatment was administered to 3.2% (95% CI 1.2%-6.9%), 8.3% (95% CI 4.3%-13.9%), and 21.5% (95% CI 13.1%-31.1%) of patients at 12, 24, and 36 months, respectively (Figure S1). A shorter TTNT was associated with del(17p)/*TP53* mutation ($P < 0.01$; Table S2).

The OS at 12, 24, and 36 months were 96.2% (95% CI 93.2%-99.2%), 90.1% (95% CI 85.0%-95.5%), and 79.5% (95% CI 70.0%-90.5%), respectively, with a median OS that was not reached with a 26-month median follow-up (Figure 2). The presence of del(17p)/*TP53* mutation ($P < 0.01$) and lack of response to treatment ($P < 0.01$) were associated with a shorter OS in univariate as well as

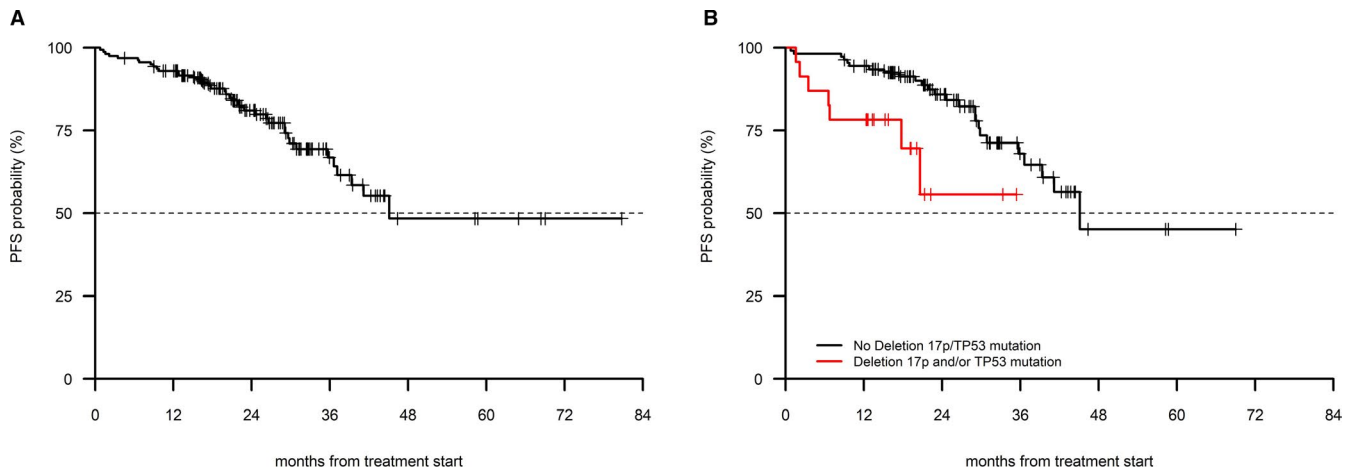


FIGURE 1 PFS in 157 patients treated with BR (A) in the entire cohort, (B) in patients with and without 17p-/TP53 mutation

	Univariate		Multivariate	
	HR (95% CI)	P	HR (95% CI)	P
Age > 65 vs ≤ 65 years	1.85 (0.66-5.24)	0.24		
Binet B-C vs Binet A	2.16 (0.95-4.92)	0.07		
beta 2 microglobulin ≥ 3.5 vs < 3.5 mg/L	1.64 (0.57-4.70)	0.36		
IGHV unmutated vs mutated	2.29 (0.92-5.69)	0.07		
17p- and/or TP53 mutated yes vs no	3.14 (1.29-7.63)	0.01	2.52 (1.00-6.39)	0.05
Gender female vs male	0.60 (0.31-1.17)	0.13		
ECOG 0 vs 1	1.64 (0.78-3.46)	0.19		
ECOG 0 vs ≥ 2	3.12 (1.25-7.81)	0.02		
Comorbidities 0-1 vs ≥ 2	2.91 (1.14-7.45)	0.03		
Creatinine clearance ≤ 70 vs > 70 mL/min	1.76 (0.69-4.54)	0.24		

TABLE 2 Progression-free survival (PFS): univariate and multivariate analyses in the bendamustine and rituximab (BR) cohort

in multivariate analysis (Table 3). Other clinicobiologic parameters had no impact on OS. Twenty-two patients died ($n = 2$ due to CLL, 9.1%; $n = 12$ infection with or without active CLL, 54.6%; $n = 3$ second primary tumors, 13.6%; 1 each cardiac disease and sudden death). In three patients, the cause of death was not reported.

3.3 | Safety

Forty-two percent of the BR patients reported at least one grade 3-4 adverse event. Overall, cytopenias were recorded in 34% of patients. Grade 3-4 neutropenia occurred in 24% of cases. Grade 3-4 infections including febrile neutropenia were recorded in 11% of patients. One case of fatal infection was reported. Grade 3-4 rash and/or dermatitis were reported 3% of patients.

3.4 | Comparison of BR in the GIMEMA-ERIC dataset and ibrutinib in the US dataset

Data on 165 and 162 older patients without del(17p)/TP53 aberrations treated with BR and ibrutinib, respectively, were analyzed. The median follow-up in the BR and in the ibrutinib cohorts was 29 months (95% CI 26-31) and 13 months (95% CI 10-14), respectively. As shown in Table 4, the two cohorts were comparable in terms of age and frequency of del(11q). Patients with advanced Rai stage were more frequently represented in the ibrutinib cohort than in the BR cohort, and the interval between diagnosis and treatment was significantly longer in the ibrutinib cohort.

Factors associated with a longer PFS in multivariate analysis in the combined patient population treated with BR and ibrutinib were represented by age as a continuous

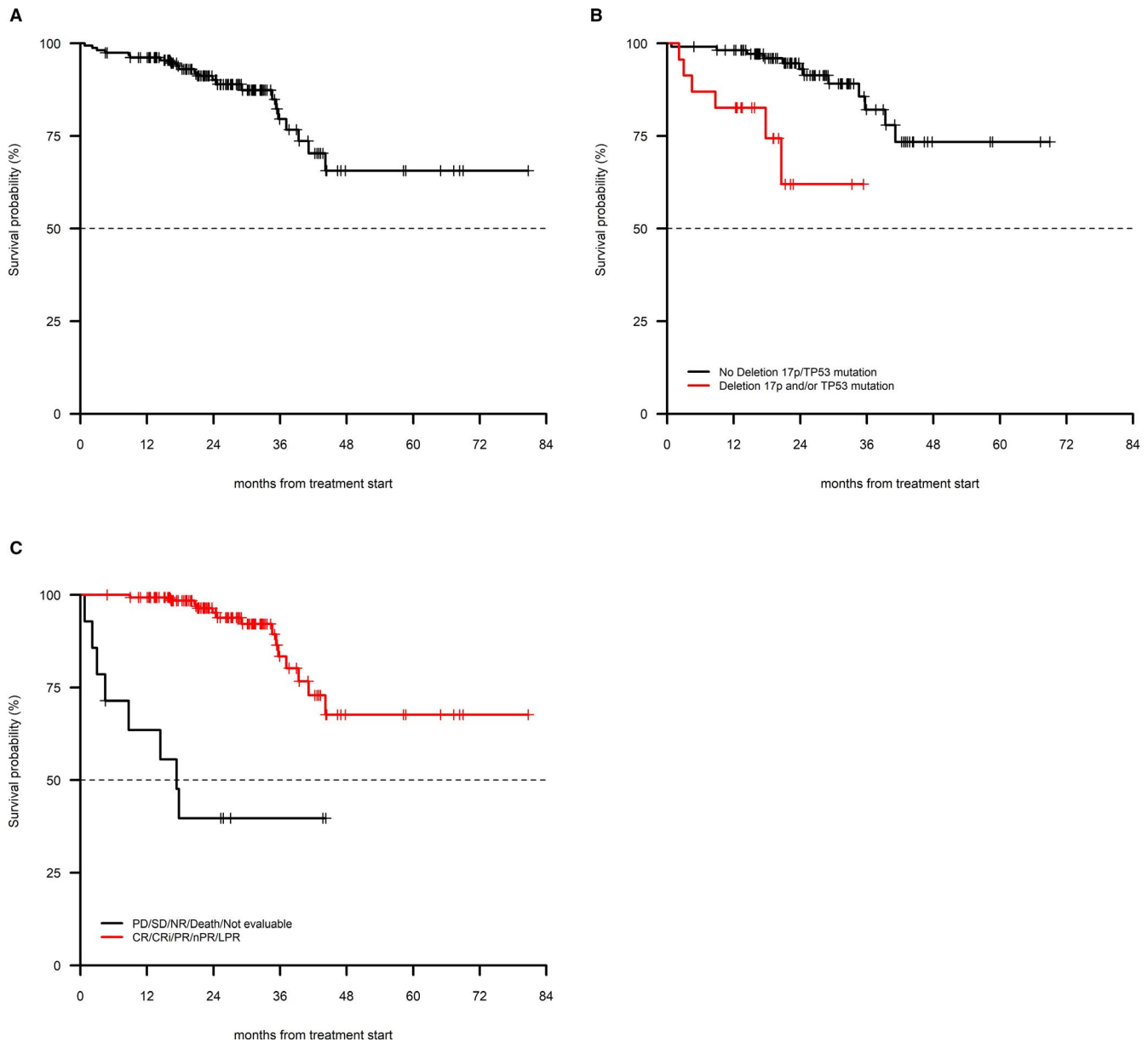


FIGURE 2 OS in 157 patients treated with BR (A) in the entire cohort, (B) in patients with and without 17p/TP53 mutation, (C) in patients who had a response to treatment vs patients who did not respond to treatment

variable and by treatment with ibrutinib (Table 5). Age was the only factor predicting for shorter OS at multivariable analysis (HR 1.10, 95% CI 1.04 - 1.15, $P < 0.01$).

In a post hoc analysis including patients in advanced stage (ie Rai III-IV), the ibrutinib cohort ($n = 96$ patients), and the BR cohort ($n = 46$ patients) were comparable in terms of age (cut-off 70 years) and interval between diagnosis and first-line treatment (cut-off 36 months), as shown in Table 6. A significant PFS advantage was observed in the ibrutinib cohort ($P = 0.03$), which also showed a trend for an advantage in terms of OS ($P = 0.08$, Figure 3(A) and (B)). Patients in early/intermediate stage in the BR ($n = 79$) and in the ibrutinib cohort ($n = 59$) had similar age and similar

interval between diagnosis and first-line treatment characteristics (Table 6). No difference was noted in terms of PFS ($P = 0.89$) and OS ($P = 0.66$) in these patients (Figure 4(A) and (B)).

4 | DISCUSSION

This is the first robust report of the efficacy and safety of BR in unfit patients treated outside clinical trials, as these patients were usually enrolled in trials using chlorambucil and an anti CD20 monoclonal antibody.^{6,27} Even though chlorambucil is the preferred option as chemotherapy backbone in this subset

	Univariate		Multivariate	
	HR (95% CI)	P	HR (95% CI)	P
Age > 65 vs ≤ 65 years	3.95 (0.53-29.50)	0.18		
Binet B-C vs Binet A	2.42 (0.79-7.41)	0.12		
β2 microglobulin ≥ 3.0-5 vs < 3.5 mg/L	4.11 (0.55-30.92)	0.17		
IGHV unmutated vs mutated	0.81 (0.22-3.05)	0.76		
17p- and/or TP53 mutated yes vs no	6.14 (2.08-18.13)	<0.01	4.47 (1.37-14.56)	0.01
NR vs CR or PR	8.43 (3.52-20.19)	<0.01	15.21 (5.72-40.74)	<0.01
Gender female vs male	0.68 (0.29-1.64)	0.39		
ECOG 0 vs 1	2.28 (0.79-6.59)	0.13		
ECOG 0 vs ≥ 2	4.90 (1.48-16.19)	0.01		
Comorbidities 0-1 vs ≥ 2	1.79 (0.60-5.29)	0.29		
Creatinine clearance ≤ 70 vs > 70 mL/min	3.02 (1.01-9.09)	0.05		
no-aberrations vs 13q	0.74 (0.12-4.45)	0.74		
11q- vs 13q	3.18 (0.52-19.37)	0.21		
+12 vs 13q	3.88 (0.90-16.71)	0.07		
17p- vs 13q	11.29 (2.08-61.14)	<0.01		

Legend: NR, no response; CR, complete response; PR, partial response.

	BR n = 165 (%)	ibrutinib = 162 (%)	P
Age ≤ 70/ >70 years	53 (32.1)/ 112 (67.9)	53 (32.7)/ 109 (67.3)	1.00
gender Male/ Female	106 (64.2)/ 59 (35.8)	102 (63.0)/ 60 (37.0)	0.90
Time dx-trx ^a < 36/≥36 months	99 (60.0)/ 66 (40.0)	69 (42.6)/ 93 (57.4)	<0.01
RAI ^b stage 0-2/ 3-4	79 (63.2)/ 46 (36.8)	59 (38.1)/ 96 (61.9)	<0.01
del11q no/ yes	101 (89.4)/ 12 (10.6)	125 (87.4)/ 18 (12.6)	0.77

^aInterval between diagnosis and treatment.

^bThe Rai staging system was used here because it was adopted in the US cohort.

Variable	univariate		Multivariate	
	HR (95% CI)	P	HR (95% CI)	P
Age (as continuous variable)	1.05 (1.02-1.09)	<0.01	1.06 (1.02-1.10)	<0.01
RAI 3-4 vs 0-2	1.09 (0.66-1.79)	0.73	—	—
11q- yes vs no	2.13 (1.04-4.37)	0.04	—	—
Time dx-trx ^a (continuous variable)	1.00 (0.99-1.00)	0.62	—	—
interval dx-trx ^a ≥ 36 vs < 36 months	0.89 (0.57-1.38)	0.61	—	—
Ibr vs. BR	0.60 (0.36-1.01)	0.05	0.55 (0.33-0.93)	0.03

^aInterval between diagnosis and treatment

TABLE 3 Overall survival (OS): univariate and multivariate analyses in the bendamustine and rituximab (BR) cohort

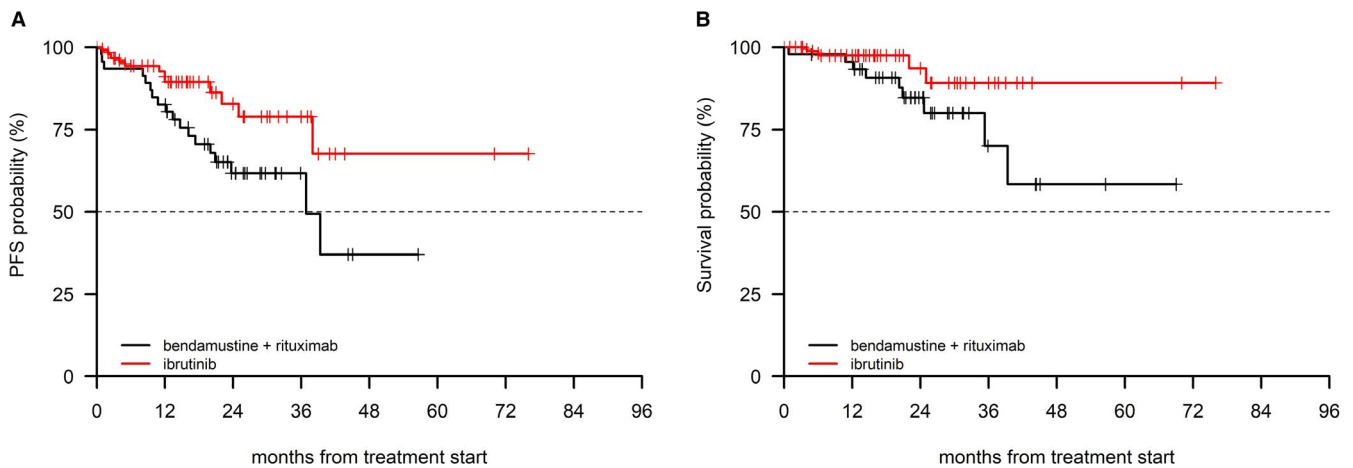
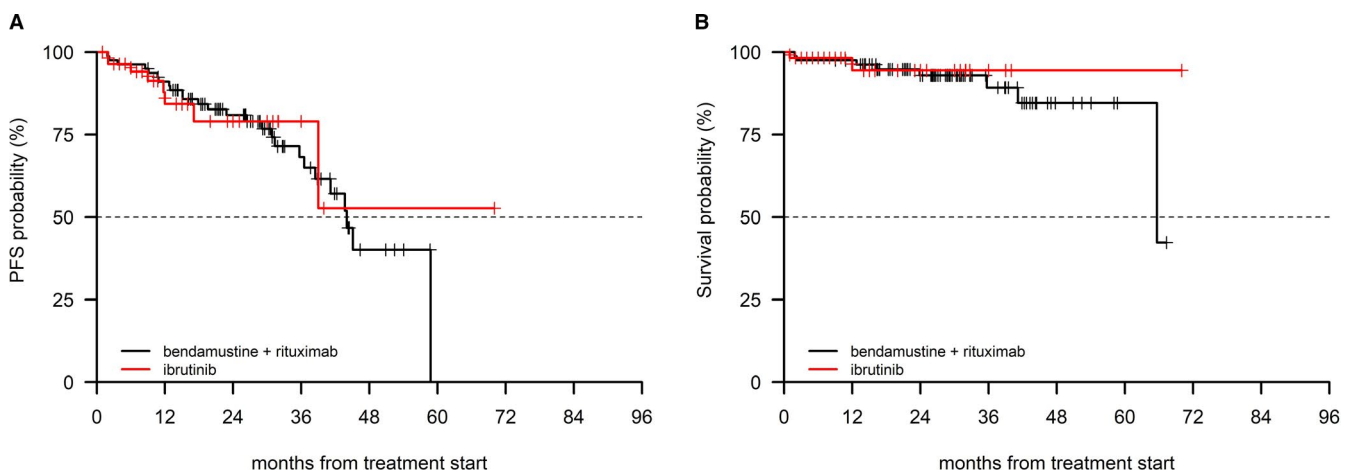
TABLE 4 Baseline characteristics of the bendamustine and rituximab (BR) and the ibrutinib cohorts

TABLE 5 Univariate and multivariable analysis of PFS in the total patient population treated with bendamustine and rituximab (BR) and ibrutinib

TABLE 6 Baseline characteristics in patients with advanced (Rai III-IV) and early/intermediate stage (Rai 0-II) in the bendamustine and rituximab (BR) and ibrutinib cohorts

		Advanced stage			Early/intermediate stage		
		BR n = 46 (%)	ibrutinib n = 96 (%)	P	BR n = 79 (%)	ibrutinib n = 59 (%)	P
Age	≤70 years	16 (34.8)	27 (28.1)	0.54	31 (39.2)	22 (37.3)	0.96
	>70 years	30 (65.2)	69 (71.9)		48 (60.8)	37 (62.7)	
Gender	Male	31 (67.4)	58 (60.4)	0.54	49 (62.0)	38 (64.4)	0.91
	Female	15 (32.6)	38 (39.6)		30 (38.0)	21 (35.6)	
Time dx-trx ^a	<36 months	25 (54.3)	35 (36.5)	0.07	50 (63.3)	30 (50.8)	0.20
	≥36 months	21 (45.7)	61 (63.5)		29 (36.7)	29 (49.2)	
del11q	No	26 (78.8)	77 (88.5)	0.29	55 (96.5)	41 (83.7)	0.06
	Yes	7 (21.2)	10 (11.5)		2 (3.5)	8 (16.3)	

^aTime dx-trx: Interval between diagnosis and treatment.

**FIGURE 3** PFS (A) and OS (B) in the BR and in the ibrutinib cohort in (Rai stage III-IV)**FIGURE 4** PFS (A) and OS (B) in the BR and in the ibrutinib cohort in (Rai stage 0-II)

of CLL,¹⁵ BR is a widely adopted front-line regimen in the clinical practice for elderly CLL patients with coexisting conditions.^{28,29}

Even though this study is not based on a registry reporting the efficacy of BR and ibrutinib in all the incident CLL cases and accepting the limitations of a retrospective analysis, to ensure

accuracy in data collection we encouraged each participating center to include all patients who started BR and we performed consistency checks on each case report form. Furthermore, we included, in addition to PFS, objective measures of efficacy such as OS and TTNT. Because bone biopsy was not mandatory, we were not able to assess complete response.

Our BR cohort resembled closely patients with CLL treated in the daily clinical practice in terms of age, creatinine clearance, performance status and comorbidities.³⁰ The percentage of patients with early stage disease in our analysis (41.1%) was higher than in GCLLSG and in UK trials, where 23% and 33% of the patients, were in Binet stage A, respectively.^{6,31} This finding reflects the tendency to initiate treatment in the presence of a short lymphocyte doubling time or of symptomatic disease in this unfit patient population.

The proportion of patients who completed the planned therapy in our analysis (73.1%) is in line with the data from the MABLE trial that compared chlorambucil and rituximab with the BR regimen in a fludarabine-ineligible CLL population.⁹

Grade 3-4 infections in this study (11%) occurred at a similar frequency as in clinical trials (7.7%-19%).^{9,11,25} We observed a lower incidence of grade 3-4 cytopenia (34%) compared to other studies reporting a 52.1%-56% incidence of cytopenia due to fact that many investigators did not perform a blood count at the nadir time point.

With a median PFS of 45.1 months and a projected OS rate at 24 and 36 months of 90.1% and 79.5%, respectively, our data show that BR is an effective front-line treatment option for an unfit patient population treated outside of clinical trials. The only baseline characteristics with a significant negative impact on the efficacy endpoints in this study were represented by the *TP53* disruption and, interestingly, failure to respond to BR was an independent dynamic prognostic factor for OS, a finding probably reflecting the lack of effective salvage treatment for a proportion of patients during the study period. The *IGHV*-unmutated configuration was associated with a shorter PFS, that was of borderline significant probably as a consequence of the limited number of patients assessed.

In our analysis PFS is similar to that observed in the MABLE trial (median 39.6 months).⁹ Interestingly, a median PFS of 33.9 months was observed in the subset of patients with creatinine clearance <70 in a phase-2 study²⁵ and a median PFS of 43 months with a 74% PFS rate at 24 months was reported in a trial enrolling older CLL patients.¹¹ Notably, OS was similar in our analysis and in prospective trials which reported an OS rate of approximately 80% at 36 months and an OS rate of 90%-95% at 24 months.^{11,25}

It is worth noting that chlorambucil and rituximab produced an 87% ORR with an OS rate at 48 and 60 months of 86.1% (95% CI: 79.4-93.5) and 81.2% (95% CI: 72.4-91.2),

respectively, in elderly patients treated outside clinical trials.¹⁸ Likewise, an 80.3% ORR and estimated 2-year OS of 88% was recorded by the Israeli end ERIC group in elderly patients who received chlorambucil and obinutuzumab, without unexpected adverse events.³² Taken together, these data show that the efficacy and safety of different CIT regimens in routine clinical practice are consistent with those reported in clinical trials.

Because there is evidence that treatment continuation and efficacy with ibrutinib may be inferior outside of clinical trials,^{21,22} and given the growing importance of real world evidence which can provide invaluable information to supplement randomized clinical studies,³³ we elected to compare PFS and OS in a cohort treated with ibrutinib in a real-world experience in the USA²³ with a similar patient population treated with BR at the GIMEMA-ERIC centers.

Although the two groups were treated in different time periods with consequent difference in follow-up time, we performed an indirect comparison trying to minimize the effect of the heterogeneity of patient populations.

First, we documented that in the total study population (excluding patients with 17p-) age and treatment with ibrutinib were associated with a longer PFS in multivariate analysis.

When restricting our analysis to patients with advanced stage (Rai III-IV) with comparable baseline characteristics, we were able to show that ibrutinib was associated with a longer PFS and a trend of longer OS as compared with BR, whereas no difference was observed in patients with early intermediate stage. Though caution should be exercised when interpreting these data, as they were obtained in quite a small number of patients treated outside of clinical trial, it is noteworthy that similar findings were reported in a randomized prospective study.³⁴

Taken together our data show that (a) BR is a safe and effective first-line regimen in a real-world cohort of unfit CLL patients, with the exception of patients with unfavorable genetic characteristics (ie del(17p)/*TP53* aberrations and *IGHV*-unmutated configuration), (b) there are no appreciable differences in terms of efficacy and safety between BR in clinical trials that enrolled older patients with CLL and this real world experience on unfit patients with reduced renal function and with coexisting conditions and, (ci) and ibrutinib provided more durable disease control than BR in the front-line setting in patients treated outside of clinical trials, especially in patients with advanced disease stage.

While providing evidence that BR is an effective first-line regimen in unfit patients, these data reinforce the notion that ibrutinib has an established place in the front-line treatment of older patients with CLL.^{11,15,35} These findings may have practical implications in the definition of treatment algorithms, especially in those countries with restrictions to the use of ibrutinib or other oral agents.^{36,37}

ACKNOWLEDGMENTS

Work supported by Ricerca Finalizzata project RF-2011-02349712 Ministero della Salute, Rome, Italy to AC, GG; MIUR-PRIN 2015 ZMRFEA_004, Rome, Italy to AC, AIL-Ferrara, Italy to AC; Beat Leukemia to AC. Ministry of Health, Czech Republic, grant VFN64165 to MS.

CONFLICT OF INTEREST

- Antonio Cuneo: advisory board and lecturing for Janssen, Gilead, Abbvie, Roche.
- Anthony R. Mato: consultancy for TG Therapeutics (in addition DSMB), Abbvie, Pharamacyclics, Johnson & Johnson, Regeneron, Astra Zeneca, and Celgene and research funding from TG Therapeutics, Abbvie, Pharamacyclics, Johnson & Johnson, Regeneron, Portola, DTRM, and Acerta.
- Gian Matteo Rigolin: lecturing for Abbvie, Gilead and research funding from Gilead.
- Luca Laurenti advisory board and lecturing for Janssen, Gilead, Abbvie, Roche and Astra Zeneca
- John N. Allan Advisory board/Consultant for Sunesis, PCYC, Abbvie, Genentech and research funding from Janssen, Genentech
- John M. Pagel: Consultancy for Astrazeneca, Pharamacyclics, and Gilead.
- Constantine S. Tam honorarium and research funding from Janssen.
- Paul M. Barr: consultancy for from Abbvie/Pharamacyclics, Gilead, Janssen, TG therapeutics, AstraZeneca, Celgene, Morphosys, Seattle Genetics.
- Alan P. Skarbnik: consultancy for Abbvie, Pharamacyclics, Celgene, Kite, AstraZeneca, Genentech, Seattle Genetics; Speakers Bureau for Abbvie, Pharamacyclics, Celgene, Kite, Gilead Sciences, Jazz Pharma, Beigene, AstraZeneca, Genentech, Seattle Genetics, Verastem, Novartis; Stock Ownership in COTA Healthcare.
- Nirav N. Sha: honoraria, travel support, and research funding from Miltenyi Biotec, honoraria and travel support from Incyte, and Celgene; advisory boards for Kite, Celgene, and Cellectar; research support for clinical trials from BMS
- Chaitra S. Ujjani: research support from Pharamacyclics, Astra Zeneca and Abbvie; consulting for Astra Zeneca and Abbvie.
- Lindsey Roeker: ASH grant funding for work outside of this manuscript, minority ownership interest in AbbVie and Abbott Laboratories
- Gianluca Gaidano: Advisory Boards for Janssen, Abbvie, Astra-Zeneca, Sunesis
- Michael Doubek: Honoraria and Research grants from Roche, AbbVie, AOP Orphan, Janssen-Cilag, Gilead and Amgen.
- Lucia Farina: advisory board for Janssen; lecturing for Abbvie.

- Marta Coscia: advisory board and lecturing from Janssen for Gilead, Abbvie, and e research funding from Janssen and Karyopharm Therapeutics
- Robin Foà34: Editorial boards and/or speaker's bureau for Janssen, AbbVie, Amgen, Novartis, Roche, Pfizer.
- Paolo Ghia: honoraria from AbbVie, Adaptive, ArQule, BeiGene, Celgene/Juno, Dyname, Gilead, Janssen, Sunesis and research funding from AbbVie, Gilead, Janssen, Novartis.

AUTHORS' CONTRIBUTIONS

AC, ARM, GMR, AP, MV, RF and PG designed the study and interpreted the data. AC, ARM, GMR, MG, LL, JNA, JMP, DMB, BTH, AW, NL, CST, RJ, FL, PMB, MS, APS, JJP, ARS, SJS, NNS, CSU, LR, EMO, AB, LT, MS, MM, AT, FI, GG, MD, LF, SM, FDR, MC, FRM, JdIS, AMP, IF, GC and PG collected data. AP and RC performed statistical analyses. AC and GMR wrote the manuscript. All the authors reviewed the manuscript for important intellectual contents and approved the final version of the manuscript.

DATA AVAILABILITY STATEMENT

The data that support the findings of this study are available from the corresponding author upon reasonable request.

ORCID

- Anthony R. Mato  <https://orcid.org/0000-0001-8724-1875>
 Gian Matteo Rigolin  <https://orcid.org/0000-0002-8370-5190>
 Allison Winter  <https://orcid.org/0000-0002-8437-7539>
 Frederick Lansigan  <https://orcid.org/0000-0001-6027-3359>
 Jeffrey J. Pu  <https://orcid.org/0000-0001-7498-3159>
 Nirav N. Shah  <https://orcid.org/0000-0002-4336-1071>
 Monia Marchetti  <https://orcid.org/0000-0001-7615-0572>
 Stefano Molica  <https://orcid.org/0000-0003-2795-6507>
 Francesca Romana Mauro  <https://orcid.org/0000-0003-2425-9474>

REFERENCES

1. Siegel RL, Miller KD, Jemal A. Cancer statistics, 2019. *CA Cancer J Clin.* 2019;69(1):7-34.
2. Zoellner A-K, Höhler T, Fries S, et al. Altered treatment of chronic lymphocytic leukemia in Germany during the last decade. *Ann Hematol.* 2016;95(6):853-861.
3. Keating MJ, O'Brien S, Albitar M, et al. Early results of a chemotherapy regimen of fludarabine, cyclophosphamide, and rituximab as initial therapy for chronic lymphocytic leukemia. *J Clin Oncol.* 2005;23(18):4079-4088.
4. Fischer K, Bahlo J, Fink AM, et al. Long-term remissions after FCR chemotherapy in previously untreated patients with CLL: updated results of the CLL8 trial. *Blood.* 2016;127(2):208-215.

5. Eichhorst B, Fink A-M, Bahlo J, et al. First-line chemoimmunotherapy with bendamustine and rituximab versus fludarabine, cyclophosphamide, and rituximab in patients with advanced chronic lymphocytic leukaemia (CLL10): an international, open-label, randomised, phase 3, non-inferiority trial. *Lancet Oncol*. 2016;17(7):928-942.
6. Goede V, Fischer K, Busch R, et al. Obinutuzumab plus chlorambucil in patients with CLL and coexisting conditions. *N Engl J Med*. 2014;370(12):1101-1110.
7. Foà R, Del Giudice I, Cuneo A, et al. Chlorambucil plus rituximab with or without maintenance rituximab as first-line treatment for elderly chronic lymphocytic leukemia patients. *Am J Hematol*. 2014;89(5):480-486.
8. Hillmen P, Gribben JG, Follows GA, et al. Rituximab plus chlorambucil as first-line treatment for chronic lymphocytic leukemia: final analysis of an open-label phase II study. *J Clin Oncol*. 2014;32(12):1236-1241.
9. Michallet A-S, Aktan M, Hiddemann W, et al. Rituximab plus bendamustine or chlorambucil for chronic lymphocytic leukemia: primary analysis of the randomized, open-label MABLE study. *Haematologica*. 2018;103(4):698-706.
10. Moreno C, Greil R, Demirkan F, et al. Ibrutinib plus obinutuzumab versus chlorambucil plus obinutuzumab in first-line treatment of chronic lymphocytic leukaemia (iLLUMINATE): a multicentre, randomised, open-label, phase 3 trial. *Lancet Oncol*. 2019;20(1):43-56.
11. Woyach JA, Ruppert AS, Heerema NA, et al. Ibrutinib regimens versus chemoimmunotherapy in older patients with untreated CLL. *N Engl J Med*. 2018;379(26):2517-2528.
12. Shanafelt TD, Wang XV, Kay NE, et al. Ibrutinib-rituximab or chemoimmunotherapy for chronic lymphocytic leukemia. *N Engl J Med*. 2019;381(5):432-443.
13. Jain N. Selecting front-line therapy for CLL in 2018. *Hematology Am Soc Hematol Educ Program*. 2018;2018(1):242-247.
14. Kipps TJ, Stevenson FK, Wu CJ, et al. Chronic lymphocytic leukaemia. *Nat Rev Dis Primers*. 2017;3:16096.
15. Hallek M. Chronic lymphocytic leukemia: 2020 update on diagnosis, risk stratification and treatment. *Am J Hematol*. 2019;94(11):1266-1287.
16. Gentile M, Zirlirk K, Ciolli S, et al. Combination of bendamustine and rituximab as front-line therapy for patients with chronic lymphocytic leukaemia: multicenter, retrospective clinical practice experience with 279 cases outside of controlled clinical trials. *Eur J Cancer*. 2016;60:154-165.
17. Cuneo A, Follows G, Rigolin GM, et al. Efficacy of bendamustine and rituximab as first salvage treatment in chronic lymphocytic leukemia and indirect comparison with ibrutinib: a GIMEMA, ERIC and UK CLL FORUM study. *Haematologica*. 2018;103(7):1209-1217.
18. Laurenti L, Innocenti I, Autore F, et al. Chlorambucil plus rituximab as front-line therapy for elderly and/or unfit chronic lymphocytic leukemia patients: correlation with biologically-based risk stratification. *Haematologica*. 2017;102(9):e352-e355.
19. Herishanu Y, Goldschmidt N, Bairey O, et al. Efficacy and safety of front-line therapy with fludarabine-cyclophosphamide-rituximab regimen for chronic lymphocytic leukemia outside clinical trials: the Israeli CLL Study Group experience. *Haematologica*. 2015;100(5):662-669.
20. UK CLL Forum. Ibrutinib for relapsed/refractory chronic lymphocytic leukemia: a UK and Ireland analysis of outcomes in 315 patients. *Haematologica*. 2016;101(12):1563-1572.
21. Ghia P, Cuneo A. Ibrutinib in the real-world patient: many lights and some shades. *Haematologica*. 2016;101(12):1448-1450.
22. Mato AR, Roeker LE, Allan JN, et al. Outcomes of front-line ibrutinib treated CLL patients excluded from landmark clinical trial. *Am J Hematol*. 2018;93(11):1394-1401.
23. Mato AR, Nabhan C, Thompson MC, et al. Toxicities and outcomes of 616 ibrutinib-treated patients in the United States: a real-world analysis. *Haematologica*. 2018;103(5):874-879.
24. Hallek M, Cheson BD, Catovsky D, et al. Guidelines for the diagnosis and treatment of chronic lymphocytic leukemia: a report from the International Workshop on Chronic Lymphocytic Leukemia updating the National Cancer Institute-Working Group 1996 guidelines. *Blood*. 2008;111(12):5446-5456.
25. Fischer K, Cramer P, Busch R, et al. Bendamustine in combination with rituximab for previously untreated patients with chronic lymphocytic leukemia: a multicenter phase II trial of the German Chronic Lymphocytic Leukemia Study Group. *J Clin Oncol*. 2012;30(26):3209-3216.
26. Harris PA, Taylor R, Thielke R, Payne J, Gonzalez N, Conde JG. Research electronic data capture (REDCap) - a metadata-driven methodology and workflow process for providing translational research informatics support. *J Biomed Inform*. 2009;42(2):377-381.
27. Fischer K, Al-Sawaf O, Bahlo J, et al. Venetoclax and obinutuzumab in patients with CLL and coexisting conditions. *N Engl J Med*. 2019;380(23):2225-2236.
28. Al-Sawaf O, Cramer P, Goede V, Hallek M, Pflug N. Bendamustine and its role in the treatment of unfit patients with chronic lymphocytic leukaemia: a perspective review. *Ther Adv Hematol*. 2017;8(6):197-205.
29. Mato A, Nabhan C, Kay NE, et al. Real-world clinical experience in the Connect chronic lymphocytic leukaemia registry: a prospective cohort study of 1494 patients across 199 US centres. *Br J Haematol*. 2016;175(5):892-903.
30. Knauf W, Abenhardt W, Dörfel S, et al. Routine treatment of patients with chronic lymphocytic leukaemia by office-based haematologists in Germany-data from the prospective tumour registry lymphatic neoplasms. *Hematol Oncol*. 2015;33(1):15-22.
31. Hillmen P, Robak T, Janssens A, et al. Chlorambucil plus ofatumumab versus chlorambucil alone in previously untreated patients with chronic lymphocytic leukaemia (COMPLEMENT 1): a randomised, multicentre, open-label phase 3 trial. *Lancet*. 2015;385(9980):1873-1883.
32. Herishanu Y, Shaulov A, Fineman R, et al. Frontline treatment with the combination obinutuzumab ± chlorambucil for chronic lymphocytic leukemia outside clinical trials: results of a multinational, multicenter study by ERIC and the Israeli CLL study group. *Am J Hematol*. 2020;95(6):604-611.
33. Islam P, Mato AR. Real-world evidence for chronic lymphocytic leukemia in the era of targeted therapies. *Cancer J*. 2019;25(6):442-448.
34. Burger JA, Tedeschi A, Barr PM, et al. Ibrutinib as initial therapy for patients with chronic lymphocytic leukemia. *N Engl J Med*. 2015;373(25):2425-2437.
35. Brown JR, Wierda WG. Evolving strategies in first-line chronic lymphocytic leukemia: is there a role for chemoimmunotherapy? *J Natl Compr Canc Netw*. 2019;17(11.5):1408-1410.

36. Chen Q, Jain N, Ayer T, et al. Economic burden of chronic lymphocytic leukemia in the era of oral targeted therapies in the United States. *J Clin Oncol*. 2017;35(2):166-174.
37. Iovino L, Shadman M. Novel therapies in chronic lymphocytic leukemia: a rapidly changing landscape. *Curr Treat Options Oncol*. 2020;21(4):24.

SUPPORTING INFORMATION

Additional supporting information may be found online in the Supporting Information section.

How to cite this article: Cuneo A, Mato AR, Rigolin GM, et al; the GIMEMA, European Research Initiative (ERIC) on CLL, US study group. Efficacy of bendamustine and rituximab in unfit patients with previously untreated chronic lymphocytic leukemia. Indirect comparison with ibrutinib in a real-world setting. A GIMEMA-ERIC and US study. *Cancer Med*. 2020;9:8468–8479. <https://doi.org/10.1002/cam4.3470>