

ERRATUM

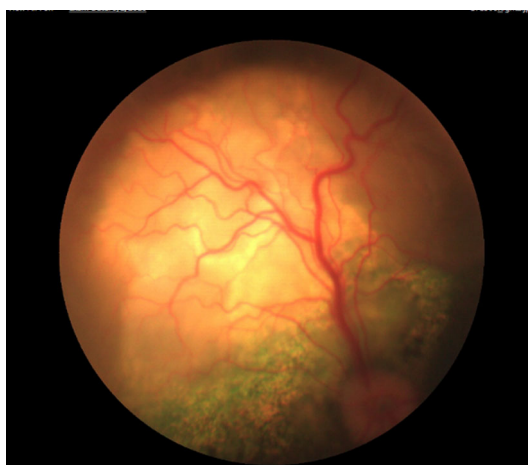
Erratum for Hypertension, retinopathy, and acute kidney injury in dogs: A prospective study

First published: July 17, 2020 <https://doi.org/10.1111/jvim.15839>

Volume 34, Issue 5.

Figure 1B was incorrect showing an example of exudative retinal detachment in a cat.

Here is the correct Figure 1B.



This is an open access article under the terms of the Creative Commons Attribution-NonCommercial License, which permits use, distribution and reproduction in any medium, provided the original work is properly cited and is not used for commercial purposes.

© 2020 The Authors. *Journal of Veterinary Internal Medicine* published by Wiley Periodicals LLC. on behalf of the American College of Veterinary Internal Medicine.