

Usefulness of ultrasonography to assess the response to steroidal therapy for the rare case of type 2b immunoglobulin G4-related sclerosing cholangitis without pancreatitis: A case report

Yuto Tanaka, Kenya Kamimura, Ryota Nakamura, Marina Ohkoshi-Yamada, Yohei Koseki, Takeshi Mizusawa, Satoshi Ikarashi, Kazunao Hayashi, Hiroki Sato, Akira Sakamaki, Junji Yokoyama, Shuji Terai

ORCID number: Yuto Tanaka 0000-0001-5916-5289; Kenya Kamimura 0000-0001-7182-4400; Ryota Nakamura 0000-0001-5695-2156; Marina Ohkoshi-Yamada 0000-0002-8495-1158; Yohei Koseki 0000-0002-2338-0830; Takeshi Mizusawa 0000-0003-3692-3504; Satoshi Ikarashi 0000-0001-7271-7762; Kazunao Hayashi 0000-0003-3764-3598; Hiroki Sato 0000-0001-7766-3724; Akira Sakamaki 0000-0002-9368-7272; Junji Yokoyama 0000-0002-1810-7709; Shuji Terai 0000-0002-5439-635X.

Author contributions: Tanaka Y, Kamimura K, Terai S wrote the manuscript; Nakamura R, Ohkoshi-Yamada M, Koseki Y, Mizusawa T, Ikarashi S, Hayashi K, Sato H, Sakamaki A, Yokoyama J treated patients and performed histological analysis; all authors read and approved the final version of the manuscript.

Informed consent statement:

Written informed consent was obtained from the patient for publication of this case report and the accompanying images.

Conflict-of-interest statement:

The authors declare that they have no current financial arrangement or affiliation with any organization that may have a direct influence on

Yuto Tanaka, Kenya Kamimura, Ryota Nakamura, Marina Ohkoshi-Yamada, Yohei Koseki, Takeshi Mizusawa, Satoshi Ikarashi, Kazunao Hayashi, Hiroki Sato, Akira Sakamaki, Junji Yokoyama, Shuji Terai, Division of Gastroenterology and Hepatology, Graduate School of Medical and Dental Sciences, Niigata University, Niigata 9518510, Japan

Corresponding author: Kenya Kamimura, MD, PhD, Lecturer, Department of Division of Gastroenterology and Hepatology, Graduate School of Medical and Dental Sciences, Niigata University, 1-757 Asahimachido-ri, Chuo-ku, Niigata 9518510, Japan. kenya-k@med.niigata-u.ac.jp

Abstract

BACKGROUND

A type 2b immunoglobulin G4 (IgG4)-related sclerosing cholangitis (SC) without autoimmune pancreatitis is a rare condition with IgG4-SC. While the variety of the imaging modalities have tested its usefulness in diagnosing the IgG4-SC, however, the usage of ultrasonography for the assessment of the response to steroidal therapy on the changes of bile duct wall thickness have not been reported in the condition. Therefore, the information of our recent case and reported cases have been summarized.

CASE SUMMARY

We report the case of an 82-year-old Japanese man diagnosed with isolated IgG4-related SC based on the increase of serum IgG4, narrowing of the bile duct, its wall thickness, no complication of autoimmune pancreatitis, and IgG4 positive inflammatory cell infiltration to the wall with the fibrotic changes. The cholangiogram revealed type 2b according to the classification. Corticosteroid treatment showed a favorable effect, with the smooth decrease in serum IgG4 and the improvement of the bile duct wall thickness.

CONCLUSION

As isolated type 2b, IgG4-SC is rare, the images, histological findings, and clinical course of our case will be helpful for physicians to diagnose and treat the new cases appropriately.

Key Words: Immunoglobulin G4-related sclerosing cholangitis; Type 2b; Corticosteroid;

their work.

CARE Checklist (2016) statement:

CARE Checklist (2016) of information was included and the form was attached.

Open-Access: This article is an open-access article that was selected by an in-house editor and fully peer-reviewed by external reviewers. It is distributed in accordance with the Creative Commons Attribution NonCommercial (CC BY-NC 4.0) license, which permits others to distribute, remix, adapt, build upon this work non-commercially, and license their derivative works on different terms, provided the original work is properly cited and the use is non-commercial. See: <http://creativecommons.org/licenses/by-nc/4.0/>

Manuscript source: Invited manuscript

Specialty type: Medicine, research and experimental

Country/Territory of origin: Japan

Peer-review report's scientific quality classification

Grade A (Excellent): 0
Grade B (Very good): B
Grade C (Good): C
Grade D (Fair): 0
Grade E (Poor): 0

Received: September 5, 2020

Peer-review started: September 5, 2020

First decision: September 30, 2020

Revised: September 30, 2020

Accepted: October 26, 2020

Article in press: October 26, 2020

Published online: November 26, 2020

P-Reviewer: Fan RY, Liu QC

S-Editor: Zhang L

L-Editor: A

P-Editor: Xing YX



Autoimmune pancreatitis; Ultrasonography; Imaging; Case report

©The Author(s) 2020. Published by Baishideng Publishing Group Inc. All rights reserved.

Core Tip: Immunoglobulin G4-associated sclerosing cholangitis (IgG4-SC) is a biliary tract lesion of the systemic IgG4-related disease. It is often complicated with autoimmune pancreatitis, and if not related, it is diagnosed as an isolated IgG4-SC. The corticosteroid treatment shows the favorable response by improving the infiltration of inflammatory cells, wall thickness, and decrease the serum IgG4. With a variety of the types of IgG4-SC determined by cholangiogram, differential diagnosis from the malignancy and primary sclerosing cholangitis is essential. In the present study, we report a rare elderly and asymptomatic case of type 2b, isolated IgG4-SC who was differentially diagnosed from primary sclerosing cholangitis by liver biopsy. The administration of corticosteroid improved the inflammation, normalized the serum IgG4 Level, and improved the wall thickness of the bile duct. As isolated type 2b, IgG4-SC is rare, the images, histological findings, and clinical course of our case will be helpful for physicians to diagnose and treat the new cases appropriately.

Citation: Tanaka Y, Kamimura K, Nakamura R, Ohkoshi-Yamada M, Koseki Y, Mizusawa T, Ikarashi S, Hayashi K, Sato H, Sakamaki A, Yokoyama J, Terai S. Usefulness of ultrasonography to assess the response to steroidal therapy for the rare case of type 2b immunoglobulin G4-related sclerosing cholangitis without pancreatitis: A case report. *World J Clin Cases* 2020; 8(22): 5821-5830

URL: <https://www.wjgnet.com/2307-8960/full/v8/i22/5821.htm>

DOI: <https://dx.doi.org/10.12998/wjcc.v8.i22.5821>

INTRODUCTION

Immunoglobulin G4-related sclerosing cholangitis (IgG4-SC) is a biliary tract lesion of the systemic IgG4-related disease involving the peri-orbital tissues, salivary glands, meninges, lymph nodes, thyroid glands, lungs, aorta, retroperitoneum, kidney, pancreas, biliary tree, gall bladder, liver, and prostate gland^[1-3]. IgG4-related disease is characterized by an increase in the serum IgG4 Level, infiltration of the lymphoplasmacytes, and IgG4-bearing plasma cells, positive response to corticosteroid therapy, and involvement of multiple organs showing inflammation with diffuse or localized swelling^[2,3]. IgG4-SC shows above-listed characteristics and reveals cholangitis due to the thickening of the bile duct wall and fibrosis caused by the infiltration of IgG4-positive plasma cells in the wall and often complicated with autoimmune pancreatitis^[1,2,4-7]. According to the diagnostic criteria^[5,8] and the images of the cholangiogram^[9], diagnosis and the classification of the types can be done and when not complicated with the autoimmune pancreatitis, it is diagnosed with isolated IgG4-SC^[10]. Computed tomography (CT), magnetic resonance imaging, magnetic resonance cholangiopancreatography (MRCP), abdominal ultrasonography (US), endoscopic ultrasonography (EUS), and endoscopic retrograde cholangiopancreatography (ERCP) are the imaging modalities useful for the diagnosis^[11]. However, as the imaging studies reveal thickening and stenosis of the biliary duct wall, differentiating the condition from the malignancy and other sclerosing cholangitis, including bile duct cancer and primary sclerosing cholangitis (PSC) are essential^[12-14]. For this differentiation, histological analyses are important. The determination of a dense lymphoplasmacytic infiltrate rich in IgG4-positive cells with fibroinflammatory changes are characteristic of this disease entity, and no detection of malignant cells^[15] or onion-skin fibrosis in the liver tissue which is the characteristic findings of PSC are helpful for the differentiation^[16]. Response to corticosteroid (CS) treatment, with improvement of symptoms, decrease of serum IgG4 and hepatobiliary enzymes, bile duct wall thickness, and bile duct stenosis are diagnostic option^[9]. Here, we report the case of an elderly and asymptomatic patient with type 2b isolated IgG4-SC. He was differentially diagnosed from PSC by liver biopsy, and the administration of CS improved the inflammation, normalized the serum IgG4 Level, and improved the wall thickening of the bile duct. A discussion of the case presented here is intended

to promote wider recognition and better understanding of this pathology.

CASE PRESENTATION

Chief complaints

An 80-year-old Japanese man was referred to our hospital for further exploration of the increase in biliary enzymes, immunoglobulins, bile duct wall thickening, and bile duct dilation.

History of past illness

He had a history of cerebral infarction and antihypertensive treatment, but no history or symptoms of inflammatory bowel disease and family history were remarkable.

Physical examination

He showed no remarkable signs and symptoms, and physical examination upon admission revealed no jaundice or lymphadenopathy and no abnormal findings on his abdomen.

Laboratory and imaging examinations

Laboratory results on the day of admission revealed an increase in the serum levels of aspartate aminotransferase (75 IU/L), alanine aminotransferase (77 IU/L), alkaline phosphatase (1060 IU/L), γ -glutamyl transpeptidase (1160 IU/L), and immunoglobulin G (1850 mg/dL) and its subtype 4 (255 mg/dL). No increase in bilirubin and tumor markers was seen (Table 1). CT scans revealed intrahepatic bile duct dilatation, bile duct wall thickening with a mild enhance effect were noted (Figure 1A). No changes in the pancreatic ducts or parenchymal structure were seen (Figure 1B). Abdominal US revealed the wall thickening of the common bile duct with narrowing of its diameter (Figure 1C). EUS also revealed the thickened bile duct wall and narrowing of its diameter with no significant irregularity of the epithelial surface (Figure 1D). The changes of the bile duct were confirmed with a MRCP showing the stenotic lesions in relatively in the proximal side including the lower common bile duct (Figure 1E). ERCP revealed multiple stenoses with long stricture in the lower bile duct and only a partial dilatation of the bile duct (Figure 1F). There were no abnormal findings at the pancreatic duct (Figure 1E and F). Following the ERCP, a biopsy of the lower bile duct was performed, showing the long stenotic lesion (Figure 1E and F, blue arrowheads) and the endoscopic nasobiliary drainage tube was placed for drainage.

Histological analyses revealed the infiltration of inflammatory cells and severe storiform fibrosis in the bile duct tissue (Figure 2A). These inflammatory cells included the IgG (Figure 2B) and IgG4 (Figure 2C) positively-stained plasma cells (more than 10 cells per high power field) and the IgG4/IgG-positive cell ratio was approximately 30% (Figure 2B and C). To differentially diagnose PSC, liver biopsy was performed. The tissue showed mild infiltration of inflammatory cells (Figure 2D) partly stained with IgG (Figure 2E) and IgG4 (Figure 2F), but no onion-skin fibrosis was seen.

FINAL DIAGNOSIS

On the basis of these findings, a diagnosis of IgG4-related sclerosing cholangitis of the subtypes of type 2b was made.

TREATMENT

Following the diagnosis, oral CS therapy at a dose of 0.6 mg/kg/day, amounting to 30 mg/day, was initiated (Figure 3). The daily dose was tapered to 25 mg after 4 wk of 30 mg administration, then to 20 mg for the next 2 wk, and tapered by 5 mg every 2 wk thereafter.

Table 1 Results of laboratory investigation

Hematology		Biochemistry			
WBC	6260 × 10 ⁶ /μL	TP	7.9 g/dL	IgG	1850 mg/dL
Neutro	49.3%	Alb	3.6 g/dL	IgA	457 mg/dL
Lymp	34.0%	BUN	18 mg/dL	IgM	42 mg/dL
Eos.	9.4%	Cre	1.1 mg/dL	IgG4	255 mg/dL
Bas.	0.5%	T-Bil	0.9 mg/dL	CEA	1.9 ng/mL
Mon.	6.8%	D-Bil	0.2 mg/dL	CA19-9	59 IU/mL
RBC	453 × 10 ⁴ /μL	AST	75 IU/L		
Hb	13.7 g/dL	ALT	77 IU/L		
Ht.	40.5%	ALP	1060 IU/L		
Plt.	11.7 × 10 ⁴ /μL	LDH	222 IU/L		
		γ-GTP	1160 IU/L		
		ChE	167 IU/L		
		Na	140 mEq/L		
		K	4.2 mEq/L		
		Cl	106 mEq/L		
Coagulation		P	3.7 mg/dL		
PT%	113%	Ca	9.4 mg/dL		
PT-INR	0.93	CRP	3.9 mg/dL		
APTT	28.4 s	FBS	90 mg/dL		
		HbA1c	5.7%		
		TG	90 mg/dL		
		HDL-C	66 mg/dL		
		LDL-C	79 mg/dL		

WBC: White blood cell; RBC: Red blood cell; Hb: Hemoglobinopathy; Plt: Platelets; PT: Prothrombin time; APTT: Activated partial thromboplastin time; TP: Total Protein; BUN: Blood Urea Nitrogen; AST: Aspartate aminotransferase; ALT: Alanine aminotransferase; ALP: Alkaline phosphatase; LDH: Lactate dehydrogenase; GTP: Guanosine triphosphate; CRP: C-reactive protein; FBS: Fasting blood sugar; HbA1c: Hemoglobin A1c; TG: Triglyceride; HDL-C: High-density lipoproteincholesterol; LDL-C: Low-density lipoprotein cholesterol; IgG: Immunoglobulin G; CA19-9: Carbohydrate antigen 19-9.

OUTCOME AND FOLLOW-UP

The bile duct wall thickness improved by day 21 and the endoscopic nasobiliary drainage tube was removed. The thickening further recovered by day 55. The serum IgG4 concentrations gradually decreased to 81.1 mg/dL within 8 wk and the hepatobiliary enzymes also returned to the normal range (Figure 3). No relapse of the disease has been observed since then.

DISCUSSION

SC is classified as either PSC, IgG4-SC, or secondary SC. Among them, IgG4-SC is considered to be a biliary lesion of a systemic IgG4-related disease^[1,2,8]. It is characterized by an increase in serum levels of IgG4, infiltration of IgG4 inflammatory cells in the bile duct wall which induce fibrosis and obstructive phlebitis^[1]. Various clinical diagnosis criteria including the HISORt criteria^[5] and the one established in Japan^[6] have been used to date. The HISORt criteria were originally established for acute interstitial pneumonia (AIP), with which most of the IgG4-SC cases are complicated. Approximately 10% of IgG4-SC cases that are not associated with AIP are described as "isolated IgG4-SC"^[4,11]. For these cases, the Japanese clinical diagnostic

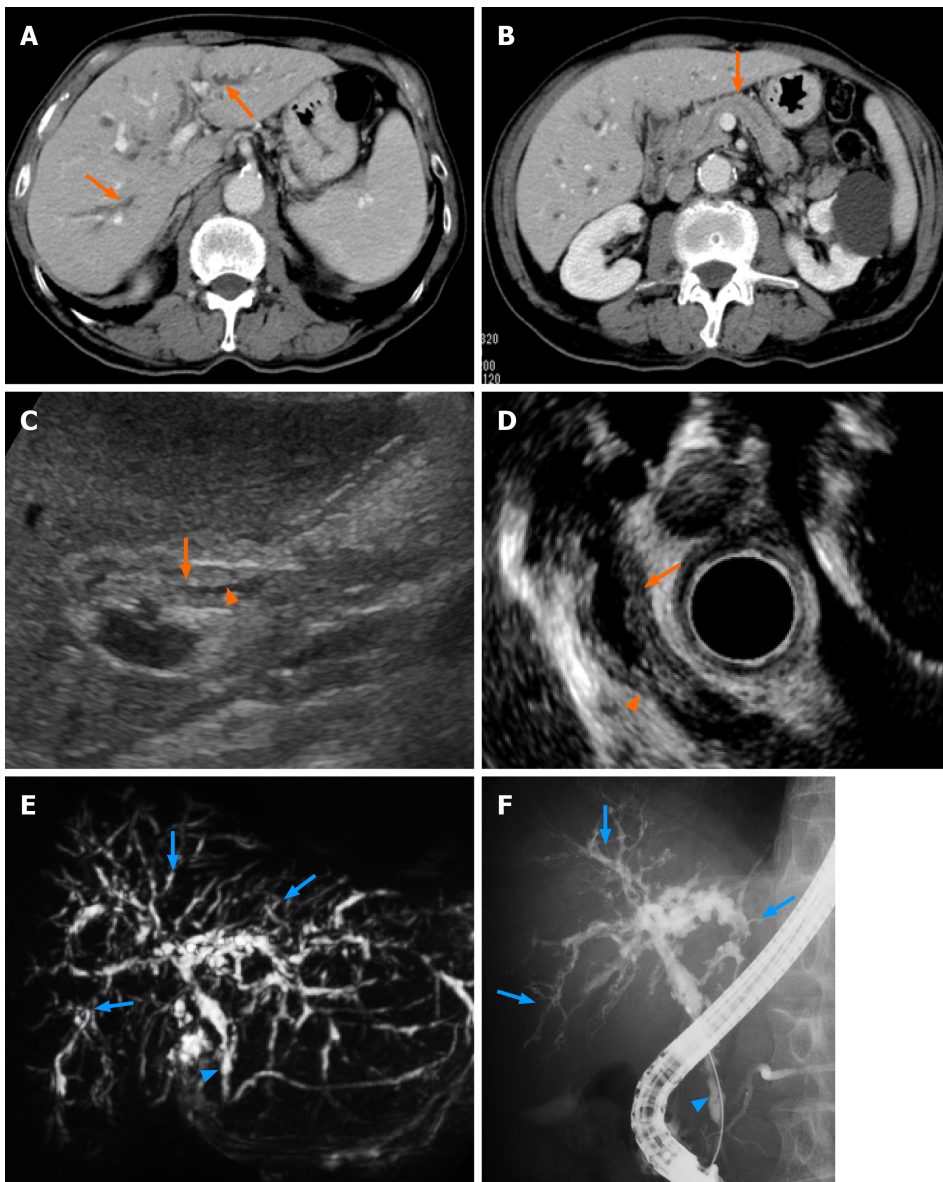


Figure 1 Contrast-enhanced computed tomography showed stricture and mild dilatation of intrahepatic bile ducts and its wall thickening with an enhance effect (A, orange arrows). No significant swelling of the pancreas and the dilatation of main pancreatic duct were observed (B, orange arrow); C: Abdominal ultrasonography and D: Endoscopic ultrasonography showed thickening of the bile duct wall (C and D, orange arrows) and stenosis of the bile duct (C and D, orange arrowheads) in the lower bile duct. Magnetic resonance cholangiopancreatography and endoscopic retrograde cholangiopancreatography revealed stenosis of the lower bile duct (E and F, blue arrowheads) and intrahepatic bile ducts (E and F, blue arrows).

criteria 2012 for IgG4-SC^[8] are useful for its diagnoses and determination of the therapeutic options^[11]. As our case showed no complications of AIP, the case was diagnosed according to the Japanese criteria^[8].

For the IgG-SC, the male dominance has been reported and the age distribution of patients revealed that patients in their 60s have the highest risk of developing the disease^[4], and our patient was older than that. Although jaundice is the most frequently-encountered symptom (35% of cases)^[4] followed by pruritus, abdominal pain, and cholangitis, no specific symptoms have been reported. Remarkably, 28% of the cases were diagnosed without symptoms, like in our case. Serum biochemical assays reflect the activity of the disease, showing the increase of hepatobiliary enzymes, serum IgG, and serum IgG4^[4,5,8].

Based on these characteristics, the diagnostic criteria include factors of biliary tract imaging with the segmental narrowing due to the wall thickening, increase of serum IgG4 (> 135 mg/dL), coexisting of AIP or other IgG4-related diseases, characteristic histological findings, and response to CS^[8]. For the imaging analyses, abdominal US, contrast-enhanced CT, and magnetic resonance imaging /MRCP have been reported to be useful in detecting wall thickening of the bile duct, dilatation and stricture of the bile duct, and pancreatic involvement. In addition to these findings, EUS is useful in

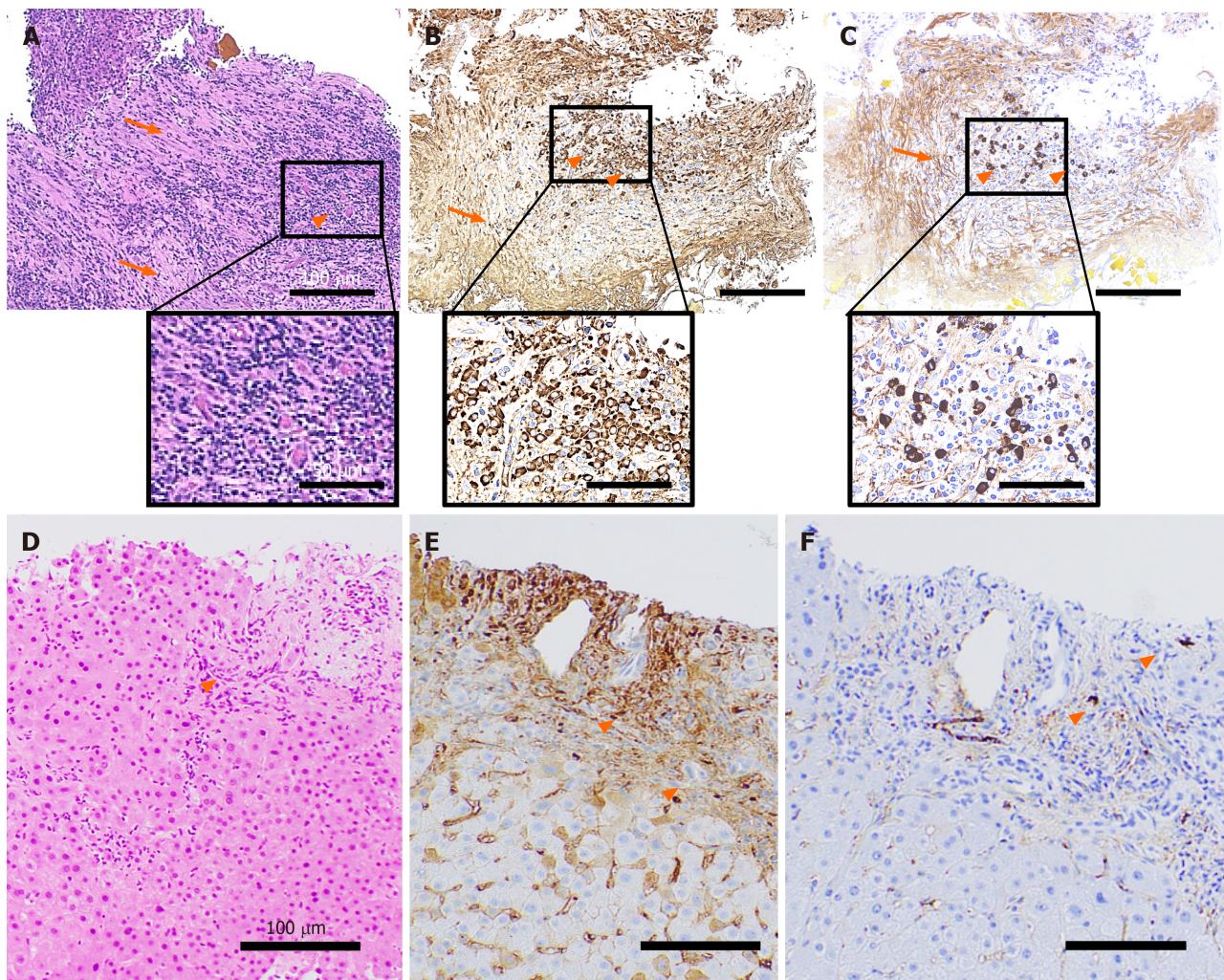


Figure 2 Histopathological findings. A tissue sample was collected from the stenotic lower bile duct and stained with hematoxylin and eosin staining (A), IgG (B), IgG4 (C). Marked infiltration of the inflammatory cells (A-C, orange arrowheads) and storiform fibrosis (A-C, orange arrows) were observed. An increase in the number of IgG- (B) and IgG4-positive cells (C) was noted. Liver tissue showed infiltration of inflammatory cells (D: hematoxylin-eosin staining; E: IgG; F: IgG4, orange arrowheads) partly positive for IgG (E) and IgG4 (F). The scale bars represent 100 μ m and 50 μ m in the insets.

detecting the smooth epithelial surface reflecting the subepithelial damage by the inflammatory cells compared to that of PSC. ERCP is most useful in diagnosing IgG4-SC with its subtyping^[11]. Based on the cholangiogram, the IgG4-SC is classified into: Type 1 which shows stenosis only in the lower bile duct; Type 2, which shows diffusely-distributed stenosis throughout the intra- and extrahepatic bile duct, and can be further sub-classified into 2a, characterized by intrahepatic bile duct with prestenotic dilatation and 2b, characterized by stricture of the intrahepatic bile ducts without prestenotic dilatation and fewer bile duct branches^[1,8,9,11]; Type 3 which shows stenosis in the hilar hepatic lesions and lower bile duct; and Type 4 which only shows stricture of the bile duct in the hilar hepatic lesions^[1,8,9,11]. The frequencies of the various types are 64% (Type 1), 5% (Type 2a), 8% (Type 2b), 10% (Type 3), and 10% (Type 4). The representative characteristics of the imaging modalities and the reports focusing on the usefulness of the modalities have been summarized in [Table 2](#) and [Table 3](#)^[10,15,17-24]. The histological characteristics include marked infiltration of inflammatory cells and fibrosis associated with the bile duct wall thickening. An increase of IgG4-positive cells in the tissues is characteristic, but not specific, and a careful consideration of the histological findings and clinical information are essential for diagnosis^[11]. The histological diagnostic criteria include: Marked inflammation of the lymphoplasmacytic cells and fibrosis; > 10 IgG4-positive cells per high power field; storiform fibrosis; and obliterative phlebitis. The identification of any three of these factors confirms the diagnosis^[8]. Our case exhibited all of these characteristics except for the phlebitis. In addition, our case showed IgG4-positive cells in the liver, which is rarely found in the liver biopsy samples^[11]. Based on the available information, our patient was diagnosed with the isolated Type 2b IgG4-SC, a rare type^[4] which needs to

Table 2 Representative findings of the imaging modalities for immunoglobulin G4-related sclerosing cholangitis

Modality	Findings	Miscellaneous	Ref.
US	Wall thickening of the bile duct, dilatation of intrahepatic bile duct	Not specific, low sensitivity	
EUS	High sensitivity	Combined with fine needle aspiration	[17-20]
IDUS	High sensitivity and specificity, high-resolution, images of the duct wall	May differentiate from cholangiocarcinoma	
CT	Wall thickness, dilatation, the thickened segment shows progressive homogeneous contrast enhancement, with more enhancement seen in the delayed phase	Combined with contrast enhancement for differential diagnosis	
MRI/MRCP	Bile duct wall thickening with iso-hypointense signal on T2-weighted image	Assessment of biliary system	
PET	Uptake of FDG in bile duct wall		
ERCP	Useful for the classification of the types	Useful for the situations in which an intervention, like stent placement, and biopsy is needed	

US: Transabdominal ultrasonography; EUS: Endoscopic ultrasonography; IDUS: Intraductal ultrasonography; CT: Computed tomography; MRI: Magnetic resonance imaging; MRCP: Magnetic resonance cholangiopancreatography; PET: Positron emission tomography; ERCP: Endoscopic retrograde cholangiopancreatogr.

Table 3 Usefulness of the imaging modality for immunoglobulin G4-related sclerosing cholangitis

Ref.	Modality	Use	Usefulness
Kobori <i>et al</i> ^[20]	US	Diagnosis follow up	Diagnosis, improvement after PSL
Matsumoto <i>et al</i> ^[15]	EUS	Diagnosis	Differential diagnosis from the cholangiocarcinoma
Swensson <i>et al</i> ^[18]	CT, MRI	Diagnosis	Differential diagnosis from the cholangiocarcinoma
Zhang <i>et al</i> ^[21]	Laboratory exams	Follow up	Response to PSL
Ohno <i>et al</i> ^[22]	Laparoscopy and IDUS	Diagnosis follow up	Symmetric circumferentially thickened wall (IDUS), discoloration with red lobular markings and multiple small depressed lesions
Naitoh <i>et al</i> ^[19]	IDUS, Histology	Diagnosis	Differential diagnosis from the cholangiocarcinoma
Graham <i>et al</i> ^[10]	Histology, radiologic features	Diagnosis	Differential diagnosis from the cholangiocarcinoma
Horiguchi <i>et al</i> ^[23]	IDUS, ERCP, laparoscopy	Diagnosis	Differential diagnosis from the cholangiocarcinoma
Shimizu <i>et al</i> ^[24]	EUS, IDUS, CT, MRCP	Diagnosis follow up	Diagnosis
Our case	US, EUS, ERCP, MRCP	Diagnosis, follow up	Diagnosis of isolated, type 2 IgG4-SC and response to PSL

US: Transabdominal ultrasonography; EUS: Endoscopic ultrasonography; CT: Computed tomography; MRI: Magnetic resonance imaging; IDUS: Intraductal ultrasonography; ERCP: Endoscopic retrograde cholangiopancreatography; PSL: Prednisolone.

be differentiated from PSC. For the differential diagnosis between PSC and type 2b IgG4-SC, age at onset, which is typically more advanced in IgG4-SC; elevation of serum IgG4; coexistence of other IgG4-related diseases; longer strictures and stricture in the lower bile duct; inflammation of full layers of bile duct mucosa; abundant IgG4-positive plasma cell infiltration with no periductal onion-skin fibrosis; and response to CS with good prognoses are the key points^[11]. Compared to the short strictures of the bile duct encountered in PSC, the stricture is relatively longer in IgG4-SC, and dilation after the stricture with stricture of the lower bile duct are often seen in IgG4-SC. Our case showed an increase in IgG4, long strictures in the lower bile duct, inflammation in the bile duct mucosa, IgG4-positive cell inflammation in the liver with no periductal onion-skin fibrosis, and response to CS (Figure 2) As such, it was successfully differentially diagnosed from PSC.

As the inflammation is induced *via* an autoimmune mechanism, the response to CS therapy is also one of the diagnostic criteria for the disease. The validity and safety of endoscopic biliary stenting for the associated biliary stenosis during CS therapy and successful removal one month after the steroid initiation have been reported^[25]. On the other hand, Miyazawa *et al*^[26] reported that IgG4-SC-related obstructive jaundice

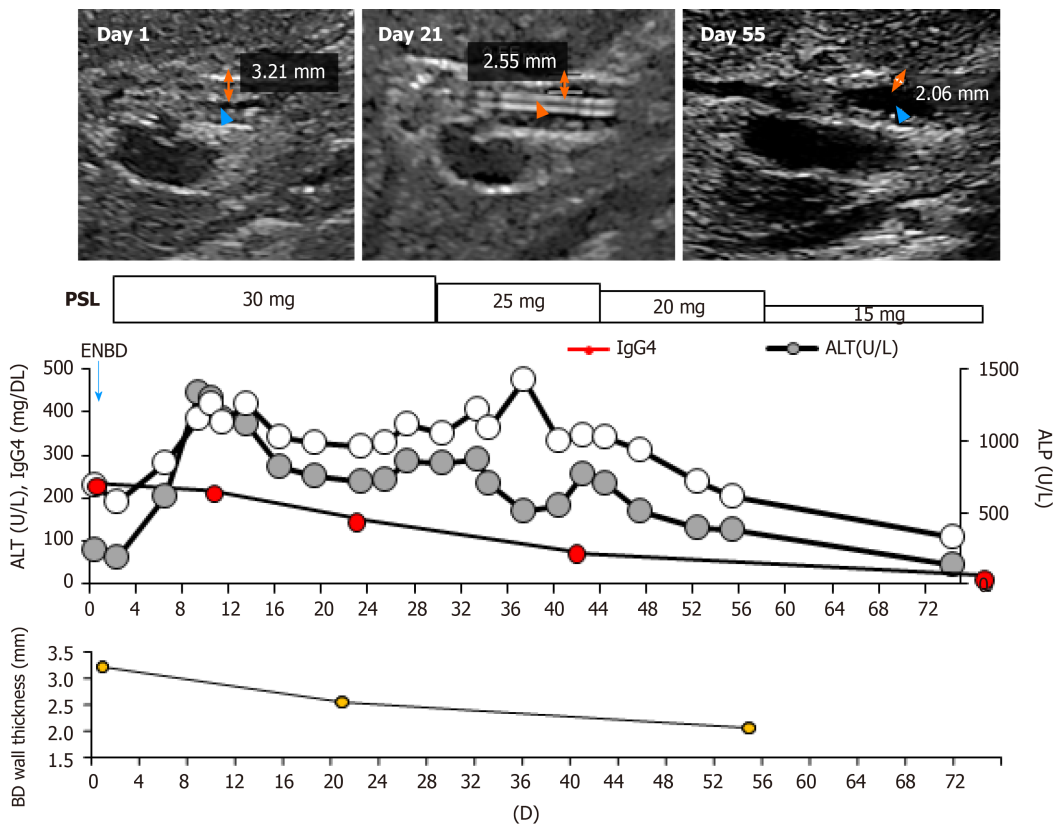


Figure 3 Clinical course. The orange two-direction arrows indicate the wall thickness determined by abdominal ultrasonography. Orange arrowheads indicate the bile duct. The blue arrowhead indicates the endoscopic nasobiliary drainage tube. BD: Bile duct; PSL: Prednisolone; ENBD: Endoscopic nasobiliary drainage; IgG4: Immunoglobulin G4; ALT: Alanine aminotransferase; ALP: Alkaline phosphatase.

without infection can be treated safely with CS monotherapy without drainage. These reports suggest the sensitivity of this disease to CS among the variety of other cholangitis and cholestatic liver diseases^[27]. Oral administration of prednisolone at 0.6 mg/kg/day is recommended for the induction of remission, followed by the gradual reduction to a maintenance dose of 5 mg/day over 2-3 mo, with which our case showed a good clinical course with the doses, and a decrease in serum IgG4, biliary enzymes, and wall thickness of the bile duct (Figure 3). The improvement of the wall thickness was able to be evaluated by the transabdominal US reflecting the response to prednisolone (PSL). As the transabdominal US is non-invasive and the response to PSL is one of the key phenomena differentially diagnosing from the cholangiocarcinoma, the findings presented here demonstrated the usefulness of US^[20] (Table 3).

CONCLUSION

In conclusion, we reported the rare case of isolated IgG4-SC of Type 2b in an elderly patient, successfully treated with CS. Our summary demonstrated the usefulness of ultrasonography for the assessment of the response to the therapy.

REFERENCES

- 1 Nakazawa T, Naitoh I, Hayashi K, Okumura F, Miyabe K, Yoshida M, Yamashita H, Ohara H, Joh T. Diagnostic criteria for IgG4-related sclerosing cholangitis based on cholangiographic classification. *J Gastroenterol* 2012; **47**: 79-87 [PMID: 21947649 DOI: 10.1007/s00535-011-0465-z]
- 2 Kamisawa T, Zen Y, Pillai S, Stone JH. IgG4-related disease. *Lancet* 2015; **385**: 1460-1471 [PMID: 25481618 DOI: 10.1016/S0140-6736(14)60720-0]
- 3 Inoue D, Yoshida K, Yoneda N, Ozaki K, Matsubara T, Nagai K, Okumura K, Toshima F, Toyama J, Minami T, Matsui O, Gabata T, Zen Y. IgG4-related disease: dataset of 235 consecutive patients. *Medicine (Baltimore)* 2015; **94**: e680 [PMID: 25881845 DOI: 10.1097/MD.0000000000000680]
- 4 Tanaka A, Tazuma S, Okazaki K, Nakazawa T, Inui K, Chiba T, Takikawa H. Clinical Features, Response

- to Treatment, and Outcomes of IgG4-Related Sclerosing Cholangitis. *Clin Gastroenterol Hepatol* 2017; **15**: 920-926. e3 [PMID: 28111336 DOI: 10.1016/j.cgh.2016.12.038]
- 5 **Ghazale A**, Chari ST, Zhang L, Smyrk TC, Takahashi N, Levy MJ, Topazian MD, Clain JE, Pearson RK, Petersen BT, Vege SS, Lindor K, Farnell MB. Immunoglobulin G4-associated cholangitis: clinical profile and response to therapy. *Gastroenterology* 2008; **134**: 706-715 [PMID: 18222442 DOI: 10.1053/j.gastro.2007.12.009]
 - 6 **Tanaka A**, Tazuma S, Okazaki K, Tsubouchi H, Inui K, Takikawa H. Nationwide survey for primary sclerosing cholangitis and IgG4-related sclerosing cholangitis in Japan. *J Hepatobiliary Pancreat Sci* 2014; **21**: 43-50 [PMID: 24353071 DOI: 10.1002/jhbp.50]
 - 7 **Masamune A**, Kikuta K, Hamada S, Tsuji I, Takeyama Y, Shimosegawa T, Okazaki K; Collaborators. Nationwide epidemiological survey of autoimmune pancreatitis in Japan in 2016. *J Gastroenterol* 2020; **55**: 462-470 [PMID: 31872350 DOI: 10.1007/s00535-019-01658-7]
 - 8 **Ohara H**, Okazaki K, Tsubouchi H, Inui K, Kawa S, Kamisawa T, Tazuma S, Uchida K, Hirano K, Yoshida H, Nishino T, Ko SB, Mizuno N, Hamano H, Kanno A, Notohara K, Hasebe O, Nakazawa T, Nakanuma Y, Takikawa H; Research Committee of IgG4-related Diseases; Research Committee of Intractable Diseases of Liver and Biliary Tract; Ministry of Health; Labor and Welfare; Japan; Japan Biliary Association. Clinical diagnostic criteria of IgG4-related sclerosing cholangitis 2012. *J Hepatobiliary Pancreat Sci* 2012; **19**: 536-542 [PMID: 22717980 DOI: 10.1007/s00534-012-0521-y]
 - 9 **Nakazawa T**, Ohara H, Sano H, Ando T, Joh T. Schematic classification of sclerosing cholangitis with autoimmune pancreatitis by cholangiography. *Pancreas* 2006; **32**: 229 [PMID: 16552350 DOI: 10.1097/01.mpa.0000202941.85955.07]
 - 10 **Graham RP**, Smyrk TC, Chari ST, Takahashi N, Zhang L. Isolated IgG4-related sclerosing cholangitis: a report of 9 cases. *Hum Pathol* 2014; **45**: 1722-1729 [PMID: 24890945 DOI: 10.1016/j.humpath.2014.04.006]
 - 11 **Kamisawa T**, Nakazawa T, Tazuma S, Zen Y, Tanaka A, Ohara H, Muraki T, Inui K, Inoue D, Nishino T, Naitoh I, Itoi T, Notohara K, Kanno A, Kubota K, Hirano K, Isayama H, Shimizu K, Tsuyuguchi T, Shimosegawa T, Kawa S, Chiba T, Okazaki K, Takikawa H, Kimura W, Unno M, Yoshida M. Clinical practice guidelines for IgG4-related sclerosing cholangitis. *J Hepatobiliary Pancreat Sci* 2019; **26**: 9-42 [PMID: 30575336 DOI: 10.1002/jhbp.596]
 - 12 **Huggett MT**, Culver EL, Kumar M, Hurst JM, Rodriguez-Justo M, Chapman MH, Johnson GJ, Pereira SP, Chapman RW, Webster GJM, Barnes E. Type 1 autoimmune pancreatitis and IgG4-related sclerosing cholangitis is associated with extrapancreatic organ failure, malignancy, and mortality in a prospective UK cohort. *Am J Gastroenterol* 2014; **109**: 1675-1683 [PMID: 25155229 DOI: 10.1038/ajg.2014.223]
 - 13 **Zen Y**, Kawakami H, Kim JH. IgG4-related sclerosing cholangitis: all we need to know. *J Gastroenterol* 2016; **51**: 295-312 [PMID: 26817943 DOI: 10.1007/s00535-016-1163-7]
 - 14 **Tanaka A**. IgG4-Related Sclerosing Cholangitis and Primary Sclerosing Cholangitis. *Gut Liver* 2019; **13**: 300-307 [PMID: 30205418 DOI: 10.5009/gnl18085]
 - 15 **Matsumoto R**, Miura S, Kanno A, Ikeda M, Sano T, Tanaka Y, Nabeshima T, Hongou S, Takikawa T, Hamada S, Kume K, Kikuta K, Masamune A. IgG4-related Sclerosing Cholangitis Mimicking Cholangiocarcinoma Diagnosed by Endoscopic Ultrasound-guided Fine-needle Aspiration. *Intern Med* 2020; **59**: 945-950 [PMID: 31875638 DOI: 10.2169/internalmedicine.3905-19]
 - 16 **Chapman MH**, Thorburn D, Hirschfield GM, Webster GGJ, Rushbrook SM, Alexander G, Collier J, Dyson JK, Jones DE, Patanwala I, Thain C, Walmsley M, Pereira SP. British Society of Gastroenterology and UK-PSC guidelines for the diagnosis and management of primary sclerosing cholangitis. *Gut* 2019; **68**: 1356-1378 [PMID: 31154395 DOI: 10.1136/gutjnl-2018-317993]
 - 17 **Madhusudhan KS**, Das P, Gunjan D, Srivastava DN, Garg PK. IgG4-Related Sclerosing Cholangitis: A Clinical and Imaging Review. *AJR Am J Roentgenol* 2019; **213**: 1221-1231 [PMID: 31509439 DOI: 10.2214/AJR.19.21519]
 - 18 **Swensson J**, Tirkes T, Tann M, Cui E, Sandrasegaran K. Differentiating IgG4-related sclerosing cholangiopathy from cholangiocarcinoma using CT and MRI: experience from a tertiary referring center. *Abdom Radiol (NY)* 2019; **44**: 2111-2115 [PMID: 30783729 DOI: 10.1007/s00261-019-01944-1]
 - 19 **Naitoh I**, Nakazawa T, Ohara H, Ando T, Hayashi K, Tanaka H, Okumura F, Takahashi S, Joh T. Endoscopic transpapillary intraductal ultrasonography and biopsy in the diagnosis of IgG4-related sclerosing cholangitis. *J Gastroenterol* 2009; **44**: 1147-1155 [PMID: 19636664 DOI: 10.1007/s00535-009-0108-9]
 - 20 **Kobori I**, Suda T, Nakamoto A, Saito H, Okawa O, Sudo R, Gyotoku Y, Katayama Y, Tamano M. Two cases of immunoglobulin G4-related sclerosing cholangitis in which transabdominal ultrasonography was useful in diagnosis and follow-up observation. *J Med Ultrason (2001)* 2016; **43**: 271-277 [PMID: 27033871 DOI: 10.1007/s10396-015-0676-7]
 - 21 **Zhang J**, Guo X, Li H, Shao X, Deng J, Liang Z, Zhang X, Feng J, Lin H, Qi X. A good response to steroid therapy in IgG4-related sclerosing cholangitis: a case report. *Clin Exp Hepatol* 2018; **4**: 205-209 [PMID: 30324147 DOI: 10.5114/ceh.2018.78126]
 - 22 **Ohno Y**, Kumagi T, Imamura Y, Kuroda T, Koizumi M, Watanabe T, Yoshida O, Tokumoto Y, Takeshita E, Abe M, Harada K, Hiasa Y. Usefulness of laparoscopy and intraductal ultrasonography in a patient with isolated immunoglobulin G4-related sclerosing cholangitis. *Clin J Gastroenterol* 2018; **11**: 62-68 [PMID: 29094322 DOI: 10.1007/s12328-017-0787-3]
 - 23 **Horiguchi S**, Ikeda F, Shiraha H, Yamamoto N, Sakakihara I, Noma Y, Tsutsumi K, Kato H, Hagihara H, Yasunaka T, Nakamura S, Kobashi H, Kawamoto H, Yamamoto K. Diagnostic usefulness of precise examinations with intraductal ultrasonography, peroral cholangioscopy and laparoscopy of immunoglobulin G4-related sclerosing cholangitis. *Dig Endosc* 2012; **24**: 370-373 [PMID: 22925292 DOI: 10.1111/j.1443-1661.2012.01300.x]
 - 24 **Shimizu S**, Naitoh I, Nakazawa T, Hayashi K, Miyabe K, Kondo H, Nishi Y, Yoshida M, Umemura S, Hori Y, Kato A, Ohara H, Kuno T, Takahashi S, Joh T. IgG4-related Sclerosing Cholangitis with No Biliary Stricture but Severe Thickening of the Bile Duct Wall. *Intern Med* 2016; **55**: 1575-1579 [PMID: 27301508 DOI: 10.2169/internalmedicine.55.6302]

- 25 **Kuraishi Y**, Muraki T, Ashihara N, Ozawa M, Nakamura A, Watanabe T, Ito T, Hamano H, Kawa S. Validity and safety of endoscopic biliary stenting for biliary stricture associated with IgG4-related pancreatobiliary disease during steroid therapy. *Endosc Int Open* 2019; **7**: E1410-E1418 [PMID: [31673612](#) DOI: [10.1055/a-0966-8494](#)]
- 26 **Miyazawa M**, Takatori H, Kawaguchi K, Kitamura K, Arai K, Matsuda K, Urabe T, Inamura K, Komura T, Mizuno H, Fuchizaki U, Yamashita T, Sakai Y, Yamashita T, Mizukoshi E, Honda M, Kaneko S. Management of biliary stricture in patients with IgG4-related sclerosing cholangitis. *PLoS One* 2020; **15**: e0232089 [PMID: [32353060](#) DOI: [10.1371/journal.pone.0232089](#)]
- 27 **Yokoda RT**, Rodriguez EA. Review: Pathogenesis of cholestatic liver diseases. *World J Hepatol* 2020; **12**: 423-435 [PMID: [32952871](#) DOI: [10.4254/wjh.v12.i8.423](#)]



Published by **Baishideng Publishing Group Inc**
7041 Koll Center Parkway, Suite 160, Pleasanton, CA 94566, USA

Telephone: +1-925-3991568

E-mail: bpgoffice@wjgnet.com

Help Desk: <https://www.f6publishing.com/helpdesk>

<https://www.wjgnet.com>

