


# BMJ Open Effectiveness of combined exercise and nutrition interventions in prefrail or frail older hospitalised patients: a systematic review and meta-analysis

Chad Yixian Han <sup>1</sup>, Michelle Miller,<sup>1</sup> Alison Yaxley,<sup>1</sup> Claire Baldwin,<sup>1</sup> Richard Woodman,<sup>2</sup> Yogesh Sharma <sup>3,4</sup>

**To cite:** Han CY, Miller M, Yaxley A, *et al*. Effectiveness of combined exercise and nutrition interventions in prefrail or frail older hospitalised patients: a systematic review and meta-analysis. *BMJ Open* 2020;**10**:e040146. doi:10.1136/bmjopen-2020-040146

► Prepublication history and additional material for this paper is available online. To view these files, please visit the journal online (<http://dx.doi.org/10.1136/bmjopen-2020-040146>).

Received 07 May 2020

Revised 04 November 2020

Accepted 18 November 2020



© Author(s) (or their employer(s)) 2020. Re-use permitted under CC BY-NC. No commercial re-use. See rights and permissions. Published by BMJ.

<sup>1</sup>Caring Futures Institute, College of Nursing and Health Sciences, Flinders University, Adelaide, South Australia, Australia

<sup>2</sup>Flinders Centre for Epidemiology and Biostatistics, Flinders University, Adelaide, South Australia, Australia

<sup>3</sup>Department of General Medicine, Flinders Medical Centre, Adelaide, South Australia, Australia

<sup>4</sup>College of Medicine and Public Health, Flinders University, Adelaide, South Australia, Australia

## Correspondence to

Chad Yixian Han;  
chad.han@flinders.edu.au

## ABSTRACT

**Objectives** To determine the effectiveness of combined exercise-nutrition interventions in prefrail/frail hospitalised older adults on frailty, frailty-related indicators, quality of life (QoL), falls and its cost-effectiveness.

**Design** Randomised controlled trials (RCTs) of combined exercise-nutrition interventions on hospitalised prefrail/frail older adults ≥65 years were collated from MEDLINE, Emtree, CINAHL, Ageline, Scopus, Cochrane and PEDro on 10 October 2019. The methodological quality was appraised, and data were summarised descriptively or by meta-analysis using a fixed effects model. The standardised mean difference (SMD) or difference of means (MD) with 95% CIs was calculated.

**Results** Twenty articles from 11 RCTs experimenting exercise-nutrition interventions on hospitalised older adults were included. Seven articles were suitable for the meta-analyses. One study had low risk of bias and found improvements in physical performance and frailty-related biomarkers. Exercise interventions were mostly supervised by a physiotherapist, focusing on strength, ranging 2–5 times/week, of 20–90 min duration. Most nutrition interventions involved counselling and supplementation but had dietitian supervision in only three studies. The meta-analyses suggest that participants who received exercise-nutrition intervention had greater reduction in frailty scores (n=3, SMD 0.25; 95% CI 0.03 to 0.46; p=0.02) and improvement in short physical performance battery (SPPB) scores (n=3, MD 0.48; 95% CI 0.12 to 0.84; p=0.008) compared with standard care. Only the chair-stand test (n=3) out of the three SPPB components was significantly improved (MD 0.26; 95% CI 0.09 to 0.43; p=0.003). Patients were more independent in activities of daily living in intervention groups, but high heterogeneity was observed (I<sup>2</sup>=96%, p<0.001). The pooled effect for handgrip (n=3)±knee extension muscle strength (n=4) was not statistically significant. Nutritional status, cognition, biomarkers, QoL, falls and cost-effectiveness were summarised descriptively due to insufficient data.

**Conclusions** There is evidence, albeit weak, showing that exercise-nutrition interventions are effective to improve frailty and frailty-related indicators in hospitalised older adults.

## Strengths and limitations of this study

- This is the first comprehensive systematic review with meta-analysis on the effectiveness of exercise-nutrition interventions on frailty and outcomes related to frailty in hospitalised and prefrail/frail older adults.
- Only randomised controlled trials describing existing exercise-nutrition interventions in prefrail/frail older hospitalised patients were included.
- There was a moderate risk of bias for most included studies such that the findings of this review are inconclusive, making it difficult to draw firm conclusions.

## INTRODUCTION

Frailty is a major contributor to late-life disability as it leads to loss of independence.<sup>1</sup> It is also associated with poor health outcomes, and, increased healthcare costs and service use.<sup>1</sup> Frailty has been defined for clinical research by Fried *et al*<sup>2</sup> as a combination of unintentional weight loss, weakness, exhaustion, slowness and reduced physical activity. Prefrailty is a stage before frailty, where one or two of the five aforementioned symptoms are present.<sup>2</sup> There are no gold standard in the clinical care setting to define frailty or prefrailty but is commonly understood as age-related physiological decline, resulting in increased vulnerability to health crises.<sup>3</sup> Older adults (aged >65 years) that have been classified as frail and are hospitalised, have a threefold higher risk of readmission or death, as compared with the younger population.<sup>4</sup> The management of older adults who are frail has an incremental effect on health expenditures with an additional equivalent of \$A2400 per frail patient per year.<sup>5</sup> With 21% of the population over 65 years estimated to be frail and 48% estimated to be prefrail,

concerns of economic impact are compounded by an ageing population.<sup>6</sup>

Exercise and nutrition are inextricably linked, in particular strength training can address component issues of the frail phenotype.<sup>7</sup> Yet evidence supporting the effectiveness of exercise-nutrition interventions for reversal of frailty is limited to community-dwelling older adults.<sup>8</sup> In a study of community participants, a 3-month combined exercise-nutrition intervention resulted in a significant reversal of frailty (reduction in Fried frailty score) at 6 months, compared with the control group (between-group difference  $-0.34$ ; 95% CI  $-0.52$  to  $-0.16$ ;  $p < 0.001$ ).<sup>9</sup> The combination of exercise therapy and dietary intervention in older adults who are frail, has also been reported to increase muscle strength (knee extension between-group difference  $1.84$  kg, 95% CI  $0.17$  to  $3.51$ ,  $p = 0.03$ )<sup>10</sup> and improve nutritional status (Mini Nutritional Assessment (MNA) Short Form between-group difference  $1.4$ , 95% CI  $0.9$  to  $1.9$ ,  $p < 0.01$ ).<sup>11</sup>

A recent meta-analysis suggested that although effective, exercise combined with nutrition was not more effective in treating frailty than exercise alone.<sup>12</sup> However, the majority of included studies were conducted in a community setting, with only 15% of older adults either hospitalised or recruited from acute care settings. No study has systematically evaluated evidence for interventions that commence during acute hospitalisation or early postdischarge (in the high-risk period for posthospital syndrome).

Hospitalisation is a vulnerable period, especially for older adults who are frail and therefore at higher risk of functional loss,<sup>13</sup> malnutrition<sup>14 15</sup> and further decline in frailty status. Malnutrition is ubiquitous in older hospitalised patients with a prevalence as high as 50%.<sup>16</sup> Since many domains of frailty are attributed to poor nutrition,<sup>17</sup> the effect of nutrition intervention when combined with exercise, may be more significant in the hospitalised population.<sup>17</sup> Also, a recent review suggests that nutrition support, provided by a multidisciplinary team, may have a positive impact on mortality and quality of life (QoL) in hospitalised older adult patients.<sup>18</sup> Nutritional therapy extends beyond protein or nutrition supplementation as reported in previous studies and may be more effective as part of individualised medical nutrition therapies involving dietitians to improve diet adequacy.<sup>19</sup>

This study aims to determine the effectiveness of combined exercise-nutrition interventions on (1) frailty, (2) frailty-related indicators, falls, QoL and (3) its cost-effectiveness on prefrail or frail hospitalised older adults.

## MATERIALS AND METHODS

### Protocol and registration

The protocol for this review was compliant with Cochrane systematic review guidelines,<sup>20</sup> and registered with the International Prospective Register of Systematic Reviews, CRD42020153934. The study is reported according to Preferred Reporting Items for Systematic Reviews and

Meta-Analyses guidelines.<sup>21</sup> Patients and/or members of the public were not involved in this study.

### Search methods

Systematic searches of electronic databases (MEDLINE, Emcare, CINAHL, Ageline, Scopus, Cochrane and PEDro) were conducted by the lead author (CYH) from inception until 10 October 2019 using search strategies reviewed by an academic librarian (search queries available in online supplemental file 1). Additionally, related citations to eligible items were identified using the suggested related citation function in PubMed. Reference lists of eligible items were also screened.

### Inclusion and exclusion criteria

The inclusion criteria were: (1) randomised controlled trials (RCTs); (2) inclusion of prefrail or frail participants (as defined by study authors); (3) recruitment of older adult inpatients and/or those hospitalised within the past 30 days of recruitment; (4) interventions that started while patients were admitted and continued in the community/posthospitalisation, or, commenced within 30 days of hospital discharge; (5) interventions that involved both physical exercises and nutritional interventions (dietary modifications/education/training alone or combined with oral nutrition supplementation); (6) measured frailty with an assessment tool or at least one indicator relevant to frailty (nutritional status, physical function, cognitive function and mood, physical activity level or biomarkers, falls and QoL and/or economic analysis of interventions). Studies were excluded if they described protocols with no pilot outcomes, interventions delivered as a part of a palliative care programme or interventions solely designed to facilitate discharge planning (eg, telephone support services, providing no prefrailty or frailty intervention element), recruited participants admitted following a mental health episode.

### Study selection and data extraction

Covidence<sup>22</sup> was used to manage citations for title and abstract, and full-text screening, in duplicate (CYH and YS, online supplemental file 1). The reviewers were unblinded to authors, journals and countries of origin. Any disagreement was resolved through discussion or consensus opinion with the other authors. A data extraction form was developed a priori by the research team, such that two researchers (CYH and YS) performed data extraction independently, on eligible full-text articles. Where available, the continuous data were extracted as (1) mean change with SD, SE or 95% CI, or (2) mean or median values with SD, SE or IQR postintervention. If the required data were not reported within a publication (including change in means for outcomes of interest), the authors were emailed to request for it.

### Quality of the studies

The risk of bias in the individual studies was assessed by the revised Cochrane risk-of-bias tool for randomised trials (RoB-2) by two researchers (CYH and YS)

independently.<sup>23</sup> Any disagreements were resolved by discussion or if required with consensus of a third reviewer. The Cochrane risk-of-bias tool is widely used to assess RCTs for best practice.<sup>24</sup> Studies were given an overall risk-of-bias judgement of low, some concerns or high. Overall risk of bias was determined as having 'some concerns' if any one of the risks of bias domains was rated as having 'some concerns'. Likewise, studies were deemed to have an overall high risk of bias if any one domain had a high risk of bias.

### Data synthesis and statistical analyses

Where possible, a meta-analysis was performed; continuous outcome data were pooled and reported as either the difference of means (MD) if the same outcome assessment tools were used or the standardised mean difference (SMD) if different outcome assessment tools were used, and the 95% CI, if there were two or more studies. The SMD is the mean difference when the outcome for each study is standardised to have mean zero and SD=1. Studies presenting SE were converted to SD via the conversion formula.<sup>20</sup> The fixed-effect meta-analyses were carried out with Cochrane Review Manager (RevMan) V.5.3.<sup>25</sup> A p value of <0.05 was considered statistically significant. The variability between studies (heterogeneity) was assessed by I<sup>2</sup> and its 95% CI.<sup>26</sup> For studies with unobtainable missing, or incomparable data, results were qualitatively synthesised.

### Patient and public involvement

No patients were involved in this study

## RESULTS

### Study selection

The flow of studies through the review process is summarised in [figure 1](#). Twenty articles reporting on 11 studies were eligible for data synthesis and analysis. Three of 11 studies presented results from their cohort across separate publications. First, Villareal *et al*<sup>27</sup> reported on physical functioning outcomes with biomarker results in the publication of Armamento-Villareal *et al*.<sup>28</sup> Second, Cameron *et al*<sup>29</sup> reported on frailty and some physical function outcomes, with other physical function outcomes in a secondary publication,<sup>30</sup> fall rates<sup>31</sup> and cost-analysis in another.<sup>32</sup> Third, Luger *et al*<sup>33</sup> reported on frailty and nutritional status, with physical functioning outcomes across two other publications,<sup>34,35</sup> fall efficacy<sup>36</sup>, QoL<sup>37</sup> and biomarkers.<sup>38</sup> For clarity, the primary articles that report frailty or physical function outcomes are cited for descriptive data in [tables 1–3](#) while individual articles are cited for synthesis of outcome results.

### Study and sample characteristics

Details of study characteristics are available in [table 1](#). Across all studies, a total of 2307 participants were investigated. Most studies reported that patients were recruited from hospital wards (n=7)<sup>29,39–44</sup> while the other four

studies<sup>27,33,45,46</sup> included patients that were recruited from hospital wards and community. Seven studies included only frail participants,<sup>27,29,41–44,46</sup> and the remaining four studies<sup>33,39,40,45</sup> included frail, prefrail and non-frail participants. The Fried frailty phenotype criteria<sup>2</sup> were used most frequently to classify frailty (n=4),<sup>29,39,40,45</sup> with participants considered non-frail, prefrail or frail if 0, 1–2, 3–5 criteria were present, respectively. Luger *et al* used the Frailty Instrument for Primary Care of the Survey of Health, Ageing, and Retirement in Europe (SHARE-FI),<sup>33</sup> which integrates components of exhaustion, appetite, handgrip strength, walking difficulties and physical activity.<sup>47</sup> Five studies did not report any assessment method to define frailty.<sup>41–44,46</sup> One study used a combination of three tools—modified Physical Performance Test, the measurement of VO<sub>2</sub> peak and the Functional Status Questionnaire.<sup>27</sup>

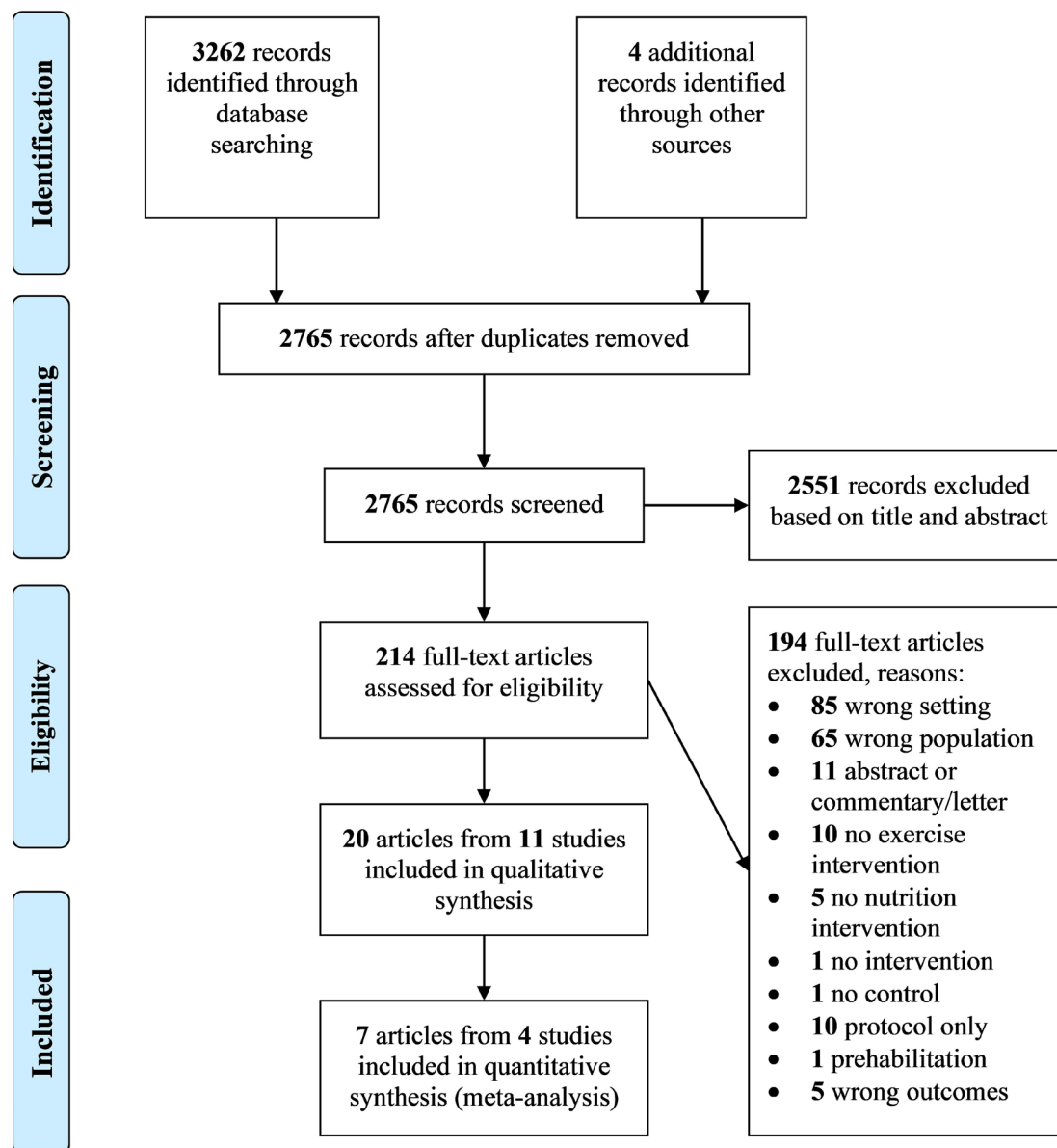
### Risk of bias within individual studies

[Table 2](#) outlines the risk of bias in individual studies. One study<sup>27</sup> had a low risk of bias and one study<sup>42</sup> had a high risk of bias (including unblinded secondary outcome assessment and insufficient detail on standard care in control groups across recruitment sites). The other nine studies<sup>29,33,39–41,43–46</sup> were rated as having some concerns overall, of which five could have been improved in ≥1 domain. The remaining four studies<sup>27,31,40,42</sup> that were rated as having 'some concerns' overall, had risk in only one domain with the most common reason being failure to blind intervention/allocated group to participants. Examples of other concerns about risk of bias included: assessors being aware of the group allocation<sup>33</sup> (measurement of outcomes domain); or a lack of information about participants/researcher blinding to group allocation.<sup>27,29,45</sup>

### Characteristics of exercise intervention component

Characteristics of the exercise interventions used in studies are outlined in [table 3](#), and included combinations of the following: supervised individual exercises (n=10),<sup>27,29,39–46</sup> group exercises (n=3),<sup>27,42,46</sup> education including support with resources (digital versatile disc or visual aid instruction booklet, n=2),<sup>33,39</sup> and motivational interviewing using a standardised protocol (n=1).<sup>33</sup> Three studies<sup>40,43,45</sup> had inpatient only interventions, five<sup>39,41,42,44,46</sup> had interventions that extended from inpatient to postdischarge, two<sup>29,33</sup> studies offered the intervention postdischarge only and one<sup>27</sup> did not report.

In the majority of studies (n=9), the exercise component was delivered by a physiotherapist.<sup>27,39–46</sup> Two studies used trained fitness instructors,<sup>39,42</sup> and another engaged lay volunteers who received training for the study.<sup>33</sup> All studies included strength exercises as part of their interventions. Three studies described guidance on training intensity based on repetition maximums (RM) between 40% and 80%.<sup>27,42,45</sup> Other components of exercise programmes included aerobic fitness,<sup>27,29,39,40</sup> flexibility<sup>27,39,40</sup> and/or balance.<sup>27,29,39,40</sup> The frequency of interventions ranged



**Figure 1** Flow diagram illustrating results of the search and study selection process as described in the Preferred Reporting Items for Systematic Reviews and Meta-Analyses statement.

from two<sup>33 39 42 45 46</sup> to five<sup>29 43</sup> sessions a week, lasting between 20<sup>41 44 45</sup> to 90 min<sup>27</sup> each. The duration of exercise intervention varied from 6 weeks<sup>46</sup> to 1 year.<sup>27 29 39 42</sup>

#### Characteristics of nutrition intervention component

Characteristics of the nutritional interventions used in studies, are outlined in table 3, and included combinations of the following: nutrition counselling (n=8),<sup>27 29 33 41–44 46</sup> oral nutrition and/or multivitamin/mineral supplements (n=7),<sup>27 29 40–44</sup> meal programmes (n=3),<sup>29 41 43</sup> self-guided education materials (n=2).<sup>39 42</sup> The most common combination of nutrition intervention was counselling with oral nutrition and/or multivitamin/mineral supplements (n=5).<sup>27 41 44 46</sup> Five of nine nutrition counselling interventions were performed by dietitians.<sup>27 41 44 46</sup> Other studies used trained lay volunteers,<sup>33</sup> a researcher/nutrition

therapist or did not specify a skill set for who delivered the counselling.<sup>45</sup>

All counselling interventions aimed to achieve adequate dietary targets for energy, protein and other nutrients. One study on obese frail participants aimed for calorie deficit but ensured that all achieved 1g/kg/day of protein in the intervention group.<sup>27</sup> The reported frequency of counselling ranged from twice a week<sup>33 45</sup> to fortnightly.<sup>41 44</sup> Oral nutrition supplements (ONS) were the most common supplements prescribed to intervention group participants (n=6),<sup>27 40 41 43 44 46</sup> typically providing 200–300 kcal and 12–24g protein per serve with a frequency of consumption up to seven times a week<sup>40 43</sup> or as prescribed by dietitians<sup>27 41 44 46</sup> to cover any identified deficits between individually estimated energy and protein requirements and actual intake. Calcium and



**Table 1** Characteristics of included studies examining prefrail or frail hospitalised older adults

Study	Country	N	Mean age	Study participants, characteristics	Recruitment site	Duration of intervention	Follow-up period	Frailty diagnostic tool/criteria used	Reported % of prefrail, frail
Arrieta <i>et al</i> <sup>69</sup>	France	302	76.7±5.0	Frail, oncogeriatric, older men and women; BMI: 26.1±4.6kg/m <sup>2</sup> (UCG); 26.2±4.4kg/m <sup>2</sup> (IG)	Acute hospital	1 y	1 y, 2 y	Fried frailty phenotype criteria	Non-frail: 73.6% Frail: 26.4%
Rodriguez-Manas <i>et al</i> <sup>45</sup>	Spain	964	78.0±5.44	Frail older men and women with T2DM; BMI: 29.6±5.0 kg/m <sup>2</sup>	Acute hospitals or primary care sites	4.5m (exercise), 3.5–4w (nutrition)	1 y	Fried frailty phenotype criteria	Prefrail: 62.2% Frail: 37.8%
Niccoli <i>et al</i> <sup>40</sup>	Canada	47	81.3±1.0	Frail older men and women hospitalised patients; BMI: 26.4±6.6kg/m <sup>2</sup> (UCG), 24.2±5.2kg/m <sup>2</sup> (IG)	Acute hospital	Average LOS (days): 20.9 (UCG), 26.5 (IG)	On discharge	Fried frailty phenotype criteria	Prefrail: at least 87.8% Frail: NR
Luger <i>et al</i> <sup>33*</sup>	Austria	80	82.8±8.0	Frail older men and women; BMI: 27.2±4.3 kg/m <sup>2</sup>	Acute hospital and community	3 m	3 m	SHARE-FI (female >0.315; male >1.212 points)	Non-frail: 1% prefrail: 35%, frail: 64%
Milte <i>et al</i> <sup>41</sup>	Australia	175	83.0±6.2 (UCG), 82.4±5.7 (IG)	Frail older men and women posthip fracture, BMI: NR	Acute hospital	6 m	6 m	NR	Frail: 100% as determined by study authors
Cameron <i>et al</i> <sup>29†</sup>	Australia	241	83.3±5.9	Frail older men and women, BMI: 26.4±6.0 kg/m <sup>2</sup> (UCG) 26.1±5.9kg/m <sup>2</sup> (IG)	Acute hospital	1 y	3m, 1 y	Fried frailty phenotype criteria	Frail: 100% as determined by study authors
Singh <i>et al</i> <sup>42</sup>	Australia	124	79.3±9.6	Frail older men and women; BMI: NR	Acute hospital	1 y	4m, 1 y	NR	Frail: 100% as determined by study authors
Villareal <i>et al</i> <sup>27‡</sup>	USA	107	69.3±4.1	Frail older men with obesity; BMI: 36.8±4.6 kg/m <sup>2</sup>	Acute hospital and community	1 y	6m, 1 y	≥2 criteria: modified PPT score 18–32; VO <sub>2</sub> peak of 11–18mL/kg; difficulty in performing 2 IADL or 1 basic ADL	Mild-to-moderate frailty: 100%
Azad <i>et al</i> <sup>46</sup>	Canada	91	74.2 and 75.8	Frail CHF older women; BMI: NR	Acute hospital and community	6w	6w, 6m	Screened by a CHF coordinator; frailty assessment undefined	Frail: 100% as determined by study authors
Blanc-Bisson <i>et al</i> <sup>43</sup>	France	76	85.4±6.6	Frail older men and women; BMI: 24.0±5.1 kg/m <sup>2</sup>	Acute hospital	Until clinical stability	Clinically stable, 1 m	NR	Frail: 100% as determined by study authors
Miller <i>et al</i> <sup>44</sup>	Australia	100	83.5±2.8	Frail older men and women with LL fracture; BMI: 22.1±4.3kg/m <sup>2</sup> (ACG), 23.2±kg/m <sup>2</sup> (IG)	Acute hospital	3 m	3 m	NR	Frail: 100%

BMI presented in mean±SD.

Multiple articles reported from same study, study chosen to represent other reports from the same study are mentioned in footnotes \*, † and ‡.

 \*Luger *et al*<sup>33</sup>–Haider *et al*<sup>34</sup>, Winzer *et al*<sup>35</sup>, Kapan *et al*<sup>36</sup>, Kapan *et al*<sup>37</sup> Haider *et al*<sup>38</sup>.

 †Cameron *et al*<sup>29</sup>–Fairhall *et al*<sup>28</sup>, Fairhall *et al*<sup>29</sup>, Fairhall *et al*<sup>30</sup>.

 ‡Villareal *et al*<sup>27</sup>–Arrieta–Villareal *et al*<sup>28</sup>.

 ACG, attention control group; ADL, activities of daily living; BMI, body mass index; CHF, chronic heart failure; IADL, instrumental activities of daily living; IG, intervention group; LL, lower limb; LOS, length of stay; m, months; NR, not reported; PPT, physical performance test; SHARE-FI, Survey of Health, Ageing and Retirement in Europe-Frailer Instrument; T2DM, type 2 diabetes mellitus; UCG, usual care group; VO<sub>2</sub>, maximal oxygen uptake; w, weeks; y, years.

**Table 2** Assessment of methodology quality of included studies using Cochrane risk-of-bias 2.0 tool

Study	Cochrane risk-of-bias 2.0 tool assessment domains					Overall
	Randomisation process	Deviations from intended interventions	Missing outcome data	Measurement of the outcome	Selection of the reported result	
Arrieta <i>et al</i> <sup>39</sup>	+	?	?	?	+	?
Rodriguez-Manas <i>et al</i> <sup>45</sup>	+	?	+	?	+	?
Niccoli <i>et al</i> <sup>40</sup>	?	?	+	?	+	?
Luger <i>et al</i> <sup>33*</sup>	+	+	+	?	+	?
Milte <i>et al</i> <sup>41</sup>	+	?	+	+	+	?
Cameron <i>et al</i> <sup>29†</sup>	+	?	+	+	+	?
Singh <i>et al</i> <sup>42</sup>	+	?	+	—	+	—
Villareal <i>et al</i> <sup>27‡</sup>	+	+	+	+	+	+
Azad <i>et al</i> <sup>46</sup>	+	?	+	?	+	?
Blanc-Bisson <i>et al</i> <sup>43</sup>	+	?	+	?	+	?
Miller <i>et al</i> <sup>44</sup>	+	?	+	+	+	?

Key: +=low risk of bias; ?=some concerns of risk of bias; -=high risk of bias.

Deviations from intended interventions (effect starting and adhering to intervention).

Multiple articles reported from same study, study chosen to represent other reports from the same study are mentioned in footnotes \*, † and ‡.

\*Luger *et al*<sup>33</sup>–Haider *et al*<sup>34</sup>, Winzer *et al*<sup>35</sup>, Kapan *et al*<sup>36</sup>, Kapan *et al*<sup>37</sup>, Haider *et al*<sup>38</sup>.

†Cameron *et al*<sup>29</sup>–Fairhall *et al*<sup>30</sup>, Fairhall *et al*<sup>31</sup>, Fairhall *et al*<sup>32</sup>.

‡Villareal *et al*<sup>27</sup>–Armamento-Villareal *et al*<sup>28</sup>.

vitamin D were the two most commonly supplemented micronutrients<sup>27 42</sup> at doses in the range of 1200–1500 mg/day and 1000 IU/day, respectively. Meal programmes were either delivered as inpatient specialised geriatric meals providing 1800–2000 kcal/day or home-delivered meal programmes.<sup>29 41 43</sup>

### Frailty outcomes

Data on frailty outcomes were available for quantitative analysis from three studies.<sup>29 33 40</sup> The meta-analysis is presented in figure 2 and suggested that participants who received exercise-nutrition intervention had a greater reduction in frailty score compared with those who received standard care (SMD 0.25; 95% CI 0.03 to 0.46;  $p=0.02$ ); no heterogeneity was observed ( $I^2=0\%$ ;  $p=0.58$ ).

### Physical functioning outcomes

#### Short physical performance battery

Data on the SPPB were available for quantitative analysis from three studies,<sup>29 45 48</sup> with results from the meta-analysis presented in figure 3. Participants who received exercise-nutrition intervention had a statistically significant improvement in SPPB score, compared with those that received standard care (MD 0.48; 95% CI 0.12 to 0.84;  $p=0.008$ ), with moderate heterogeneity<sup>20</sup> observed ( $I^2=52\%$ ;  $p=0.13$ ).<sup>20 32 33</sup> The analysis of SPPB components across all studies showed no statistically significant differences in gait speed<sup>29 40 45 48</sup> (MD 0.02; 95% CI -0.02 to 0.06;  $p=0.31$ ;  $I^2=37\%$ ,  $p=0.19$ ) or balance<sup>29 45 48</sup> (MD 0.13; 95% CI -0.04 to 0.30;  $p=0.14$ ;  $I^2=0\%$ ,  $p=0.22$ ) between groups. There were significantly greater improvements in chair stand test results<sup>29 45 48</sup> in the intervention group as compared with the control (MD 0.26;

95% CI 0.09 to 0.43;  $p=0.003$ ;  $I^2=23\%$ ,  $p=0.23$ ). Two studies that were not suitable for meta-analysis (as data could not be provided by authors<sup>39</sup> and a different measurement was used<sup>27</sup>) are instead qualitatively described. Arrieta *et al* reported no significant differences between groups in the percentage of participants who had a  $\geq 1$  point decrease in SPPB score at 1 and 2 years ( $p=0.772$ ,  $p=0.057$ , respectively).<sup>39</sup> With use of an alternative measure of physical function (modified physical performance test—includes book lift, put on and take off a coat, pick up a penny, chair rise, turn 360, 50-foot walk, 10 steps of stairs, 4 flight of stairs and progressive Romberg test), Villareal *et al*<sup>27</sup> reported a significant improvement in their exercise-nutrition interventions group as compared with exercise only ( $p=0.04$ ), nutrition only ( $p<0.001$ ) or controls.

#### Activities of daily living

Data on activities of daily living (ADL) from three studies<sup>30 35 45</sup> underwent meta-analysis, from which participants who received exercise-nutrition intervention were determined to have greater ADL independence post-intervention than those who received standard care (SMD 1.06; 95% CI 0.91 to 1.20;  $p<0.001$ , figure 3). However, high heterogeneity was observed ( $I^2=96\%$ ,  $p<0.001$ ). As such, additional random effects model was performed (SMD 0.80; 95% CI 0.00 to 1.60;  $p<0.001$ ; online supplemental file 2). Data from two studies<sup>43 46</sup> were unavailable to be included the meta-analysis. One study<sup>42</sup> was excluded due to high risk of bias in outcome measurements but reported that basic ADL declined lesser ( $p<0.0001$ ) in the intervention versus control group.

**Table 3** Characteristics of exercise and nutrition intervention and controls of included studies

Study	Exercise intervention	Nutrition intervention	Control intervention
Arrieta <i>et al</i> <sup>39</sup>	Type: <i>strength</i> —intensity range from low to high, starting at 10 repetition per exercise (UL, LL) with option of progressive loading. <i>Aerobic, flexibility, balance</i> —intensity individualised. Frequency: 2 sessions/week, duration per session NR+home exercises duration NR. Setting: inpatient (supervised, individual)+postdischarge (unsupervised, individual). Additional support reported: phone consults (by trainer 2×/month for first 6 months then monthly for 1 year); education resource.	Self-guided education resource: provided with French National Nutrition Health Program education booklet— <i>Programme National Nutrition Santé</i> (PNNS).	Usual care: NR, variable between study sites. Self-guided education resource: provided with French National Nutrition Health Program education booklet—PNNS.
Rodriguez-Manas <i>et al</i> <sup>45</sup>	Type: <i>strength</i> —40%–80% of estimated 1 RM, 8–10 repetitions (LL). Frequency: 2 weeks pretraining followed by 16-week programme of 2 days/week; 20–30 min/sessions. Setting: inpatient (supervised, individual).	Nutrition counselling: 7 educational sessions, each 45 min, delivered by a trained researcher or nutritional therapist, twice a week over 3.5–4 weeks. Therapy focused on behavioural change, nutrition optimisation and diabetes.	Usual care: usual healthcare from local health system and/or general practitioner.
Niccoli <i>et al</i> <sup>40</sup>	Type: <i>strength, aerobic, flexibility, balance</i> —intensity and target muscle group individualised based on patient's baseline assessment. Frequency: individualised based on patient's baseline assessment. Setting: inpatient (supervised, individual).	Supplements: daily ONS with 24 g whey protein per day (9 g <i>breakfast</i> , 7.5 g <i>at lunch and dinner</i> ) in addition to usual diet.	Usual care: usual medical care, no whey protein supplementation. Individual supervised exercise: individualised exercises as per intervention.
Luger <i>et al</i> <sup>33*</sup>	Type: <i>strength</i> —2 sets of 15 repetitions (UL, LL) until muscular exhaustion. Frequency: 2×/week, >30 min each session. Setting: postdischarge (supervised, individual). Additional support reported: physical education (2–3 times/week, 30 min each session); exercise education resource (demonstration DVD); motivational interviewing.	Nutrition counselling: trained, supervised lay volunteers visit twice/week for dietary discussions aimed at achieving adequate energy, protein and other nutrients. Taught how to enrich food with protein, recipes, healthy for life plate which consists of food-cards and a play board.	Usual care with attention control: trained lay 'buddies' visit twice a week but doing a portfolio of possible activities (go out, have a chat and sharing interest), especially cognitive training.
Milte <i>et al</i> <sup>41</sup>	Type: <i>strength, balance</i> ( <i>Otago exercise programme</i> )—intensity and repetitions NR, at the discretion of the treating physiotherapist (LL). Frequency: 3 x/week, 20–30 min/session for 12 weeks. Setting: inpatient (supervised, individual)+postdischarge (supervised, individual).	Nutrition counselling: individualised nutrition therapy aimed at improving energy and protein intake to meet requirements by dietitian who visits fortnightly. Meal programme: ordered as deemed necessary by dietitian. Supplements: commercial ONS recommended if needed by dietitian.	Usual care: usual rehabilitation programme recommended during hospitalisation, social visits weekly from trial staff and generic nutrition, exercise and falls prevention information.
Cameron <i>et al</i> <sup>29†</sup>	Type: <i>strength, balance, aerobic+WEBB programme</i> —intensity and target muscle groups NR. Frequency: exercises prescribed 3–5×/week (with two sessions for mobility training) for 1 year, supported by up to 10 home visits. Setting: postdischarge (supervised, individual)+(unsupervised, individual).	Nutrition counselling: clinical evaluation of nutritional intake at home. A series of diet intervention as needed by dietitian. Meal programme: ordered as deemed necessary by dietitian. Supplements: commercial ONS recommended if needed by dietitian.	Usual care: usual healthcare during hospitalisation and from their general practitioner and community services after discharge.
Singh <i>et al</i> <sup>42</sup>	Type: <i>strength</i> —80% of most recent 1 RM or RPE <15, 3 sets of 8 repetitions (UL, LL). Frequency: 2 sessions/week, session duration NR, over average of 80 sessions in 1 year, start as early as postassessment in hospital or at home. Setting: inpatient (supervised, individual)+(supervised, group-based). Additional support reported: monthly phone consults.	Nutrition counselling: counselling on increase in diet quality, frequency NR. Supplements: ONS±dietary advice to increase daily energy (400–600 kcal) and protein (20 g/day) intake. For those calcium or vitamin D deficient (52%), 12 months of vitamin D orally (1000 IU/day) or calcium (1200 mg/day) and vitamin D combination supplement. Self-guided nutrition resource: food sources of calcium, vitamin D and sun exposure.	Usual care: standard service offered for hip fracture in the area health service, including orthogeriatric care, rehabilitation service, other medical and allied health consultation as required and physiotherapy.

Continued

Table 3 Continued

Study	Exercise intervention	Nutrition intervention	Control intervention
Villareal <i>et al</i> <sup>27</sup> ‡	Type: <i>strength</i> —65% of 1 RM; 8–12 repetitions of each exercise (UL, LL) with options for progression. <i>Aerobic</i> , ~65% of peak HR with gradual progression to 70%–85%. <i>Flexibility, balance</i> frequency: 90 min, 3 sessions/week. Setting: inpatient (supervised, group-based).	Nutrition counselling: prescribed a balanced diet with energy deficit of 500–750 kcal/day from daily energy requirement, 1 g of high-quality protein/kg BW/day. Weekly group consultation with dietitian for adjustments of their caloric intake, goals and behavioural therapy. Supplements: 1500 mg calcium/day and ~1000 IU vitamin D/day.	Usual care: general healthy lifestyle advice. Supplements: 1500 mg calcium/day and ~1000 IU vitamin D/day.
Azad <i>et al</i> <sup>46</sup>	Type: ‘comprehensive exercise programme’; type, intensity and target muscle groups NR. Frequency: 11 sessions over 6 weeks+NR home exercises. Setting: inpatient (supervised, group-based), postdischarge (unsupervised, individual).	Nutrition counselling: 3 sessions of individualised counselling about diet and nutrition in the management of CHF by dietitian.	Usual care: optimal medical care.
Blanc-Bisson <i>et al</i> <sup>43</sup>	Type: <i>strength</i> —intensity (RM) NR, 10× repetitions each exercise (LB). Frequency: 30 min, twice/day, 5 days/week. Setting: inpatient (supervised, individual).	Meal programme: geriatric hospital meals of 1800–2000 kcal/day. Supplements: 1 daily ONS of 200 kcal and 15 g protein.	Usual care: from day 3 to 6, patients started to walk with human help with or without technical assistance in the physiotherapy room for three sessions per week until discharge. Individual supervised exercise: physiotherapy continued at home for 1 month.
Miller <i>et al</i> <sup>44</sup>	Type: <i>strength</i> —intensity (RM) NR, 2 sets of 8 repetitions (LL) with progressive loading, at the discretion of the treating physiotherapist. Frequency: x/week, 20–30 min/session for 12 weeks. Setting: inpatient (supervised, individual)+postdischarge (supervised, individual).	Nutrition counselling: individualised nutrition therapy by dietitian. Supplements: single type of ONS to cover the shortfall between individual estimated energy and protein requirements and actual intake over 42 days.	Usual care with attention control group—received tri-weekly visits weeks 1–6, then weekly visits 7–12 to account for the possibility of the attention effect.

Multiple articles reported from same study, study chosen to represent other reports from the same study are mentioned in footnotes \*, † and ‡.

\*Luger *et al*<sup>33</sup>—Haider *et al*,<sup>34</sup> Winzer *et al*<sup>35</sup>, Kapan *et al*<sup>36</sup>, Kapan *et al*<sup>37</sup>, Haider *et al*<sup>38</sup>.

†Cameron *et al*<sup>29</sup>—Fairhall *et al*<sup>30</sup>, Fairhall *et al*<sup>31</sup>, Fairhall *et al*<sup>32</sup>.

‡Villareal *et al*<sup>27</sup>—Armamento-Villareal *et al*<sup>28</sup>.

BW, body weight; CHF, chronic heart failure; DVD, digital versatile disc; HR, heart rate; LL, lower limb; NR, not reported; ONS, oral nutrition supplements; Otago exercise programme, series of 17 strength and balance at-home exercises for fall prevention programme in frail older adults; RM, repetition max; UL, upper limb; WEBB, Weight-Bearing for Better Balance exercise programme is designed to improve mobility, increase physical activity and prevent falls.

## Muscle strength

The meta-analysis showed no statistically significant differences in muscle strength between participants who received exercise-nutrition intervention and those that received standard care, when handgrip strength was analysed from three studies<sup>29 40 48</sup> (MD 0.46; 95% CI –0.38 to 0.85;  $p=0.28$ ;  $I^2=49\%$ ,  $p=0.14$ ), or, when of handgrip and quadriceps strength was combined ( $n=4$  studies)<sup>29 40 45 48</sup> using a published methodology<sup>49</sup> (SMD 0.10; 95% CI –0.09 to 0.29;  $p=0.24$ ,  $I^2=28\%$ ,  $p=0.30$ ) (figure 3).

## Nutrition, cognition and biomarkers outcomes

Most studies assessed participants’ nutritional status at baseline, while only one study<sup>33</sup> assessed it as an outcome. Luger *et al* reported a 1.54-point improvement in the MNA long form in participants who received exercise-nutrition intervention compared with those who received standard care (95% CI 0.51 to 2.56,  $p=0.004$ ). Combined exercise-nutrition intervention did not affect cognitive status (Mini-Mental State Examination) or mood (Geriatric Depression Scale).<sup>46</sup> Armamento-Villareal *et al*

## Frailty

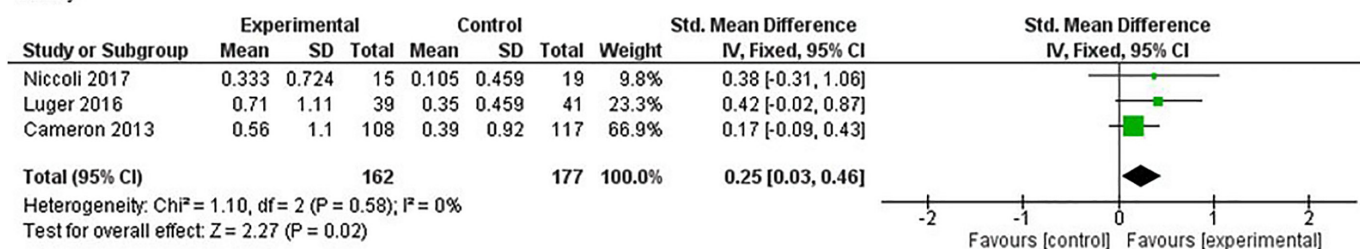
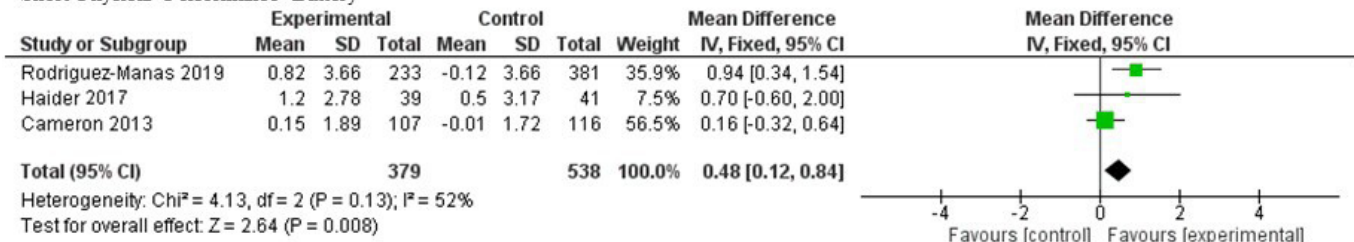


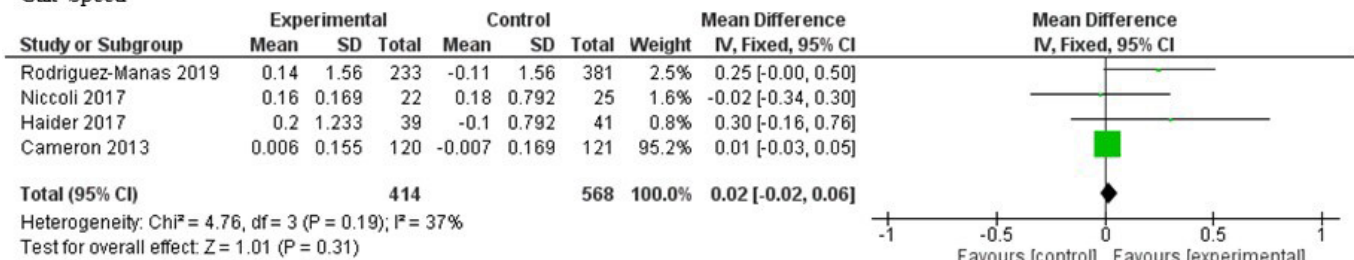
Figure 2 Meta-analysis of reduction in frailty score for exercise and nutrition intervention versus standard care. IV, inverse variance.



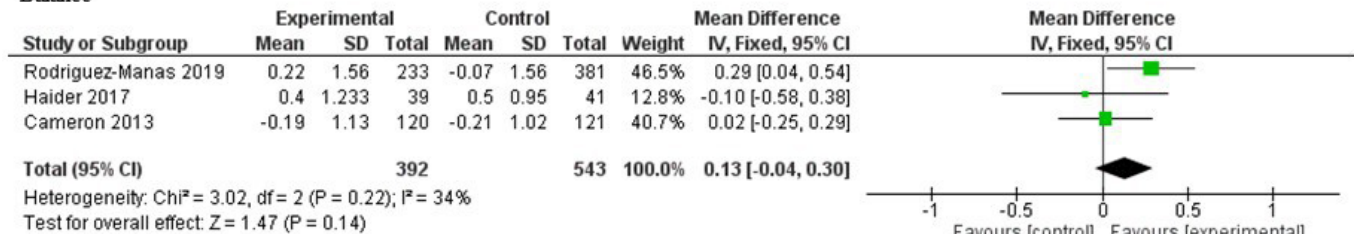
## Short Physical Performance Battery



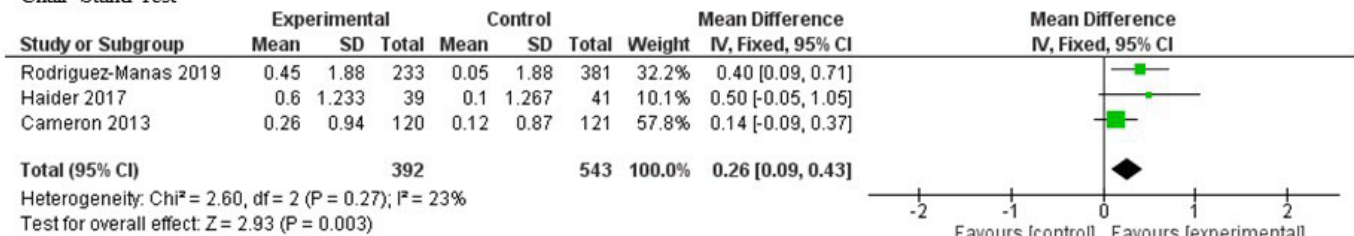
## Gait Speed



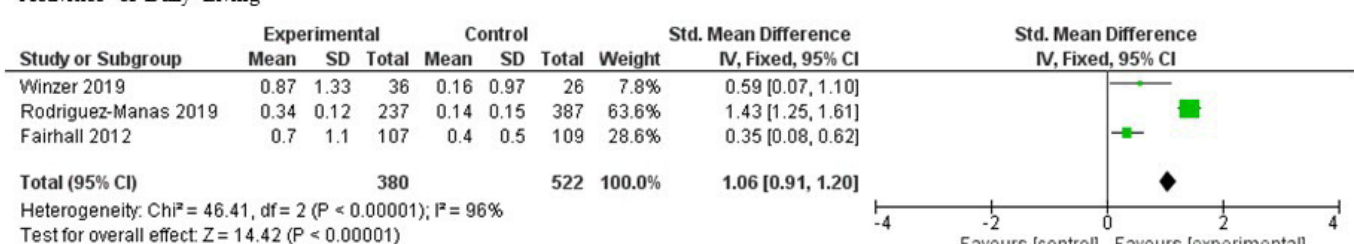
## Balance



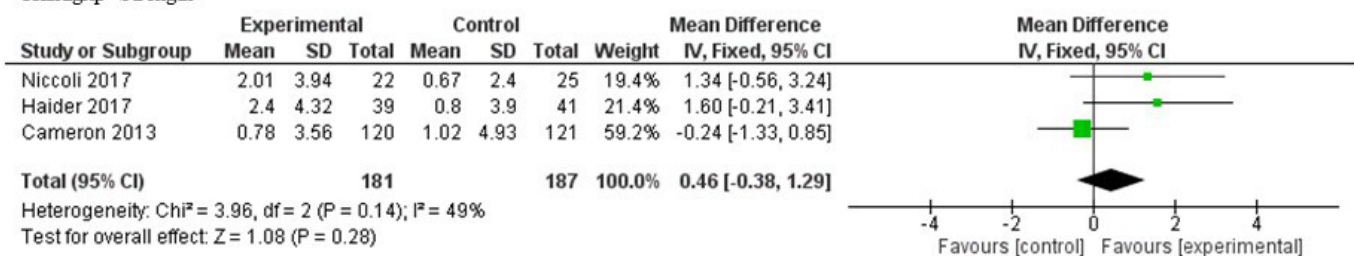
## Chair Stand Test



## Activities of Daily Living



## Handgrip Strength



Abbreviations: CI confidence interval; IV inverse variance; SD standard deviation

**Figure 3** Meta-analyses of short physical performance battery, gait speed, balance test, chair stand test, activities of daily living, handgrip strength. IV, inverse variance.

reported a significant decrease in total and free estradiol in their frail older men with obesity (attributed to weight loss from lifestyle change rather than the intervention), without a clinically meaningful increase in total or free testosterone levels.<sup>28</sup> In one study that reported C reactive protein levels, this inflammatory marker remained stable in the exercise-nutrition intervention group participants, compared with an increase in the social support control group at the end of 12 weeks ( $p=0.04$ ).<sup>38</sup>

#### Quality of life and falls

Three studies<sup>32 37 41</sup> that evaluated QoL did not find a statistically significant improvement in the intervention as compared with the control group, although Milte *et al*<sup>41</sup> found a trend favouring intervention. Fairhall *et al*<sup>31</sup> found that risk factors related to falls (physical tests as mentioned above) but not rate of falls were reduced while Kapan *et al*<sup>36</sup> found that a 10% reduction in fear of falling as ascertained by the falls efficacy scale.

#### Economic analyses

Only two studies examined the cost-effectiveness of their exercise-nutrition intervention. Fairhall *et al*<sup>32</sup> reported no additional resource cost in terms of medical ( $p=0.87$ ) or nursing and health professional appointments ( $p=0.32$ ). Similarly, Milte *et al*<sup>41</sup> reported no cost differences between groups ( $p=0.868$ ).

## DISCUSSION

### Main findings

The present systematic review and meta-analysis present updated evidence that suggests exercise with nutrition intervention to be effective on frailty and frailty-related physical outcomes in hospitalised older adult patients. When compared with standard care, combined exercise-nutrition interventions improved frailty status as determined by the Fried Frailty criteria<sup>2</sup> and the SHARE-FI.<sup>47</sup> They also improved physical function according to the SPPB and ADLs. Only one study measured and found significant improvement in nutrition score.<sup>33</sup> The two economic analyses included in this review suggested that combined exercise-nutrition interventions, although more effective, were no more costly than standard care.

Existing reviews of exercise and nutrition interventions have highlighted heterogeneity in study protocols (including intervention descriptions), which limits potential for quantitative analysis. They have also focused on community dwelling participants.<sup>50</sup> This study is novel in reviewing a more vulnerable hospitalised population that has not been previously investigated, and specifically targeting prefrail or frail older adults. However, out of five studies in this review that used a validated frailty assessment tool, only three had assessed frailty at outcome, and available for quantitative analysis. This could be because the frailty phenotype was first described 2001, with a systematic evaluation of frailty tools a decade later.<sup>2 51</sup> Accordingly, the authors decided to additionally evaluate

frailty components such as physical function, nutrition, cognition and biomarkers as baseline and outcome measures. Although not specific to frailty, these measures provide insights to the effectiveness of exercise-nutrition interventions on improving various components of frailty and may inform future studies.

Previous reviews have found mixed results<sup>50</sup> or have concluded that evidence for combined interventions is limited but increasing.<sup>52</sup> Our results concur with RCTs of exercise-nutrition interventions conducted in community dwelling frail older adults. Tarazona-Santabalbina *et al* found significant improvement in SPPB in participants on a 24-week exercise-nutrition intervention as compared with controls in a community dwelling frail population—intervention group  $9.5\pm 1.8$  vs control group  $7.1\pm 2.8$ ,  $p=0.0070$ .<sup>53</sup> Similarly, Kim *et al* reported a 12-week, community-based study of frail older adults that found SPPB to remain stable in the intervention group, while it decreased by 12.5% (1 point) in controls ( $p=0.039$ ).<sup>54</sup> Our meta-analysis of individual components of the SPPB suggests that the significant improvements in functional muscle strength as represented by the chair stand component of the SPPB may be pivotal to the increase in overall SPPB postintervention, and reflect the functional lower limb strength training focus of the exercise interventions. However, the meta-analysis of handgrip±quadriceps strength did not produce a similar trend. Diversity in outcome measures for frailty and frailty-related domains like physical function is a challenge for comparative analyses between studies. Future studies should carefully consider measure responsiveness when selecting outcome tools.

Nutrition is another important domain within frailty. Yet the majority of studies included in this review only reported nutrition status at baseline, with only one study reporting follow-up nutrition assessment at the end of the intervention.<sup>33</sup> Luger *et al* described an improvement in nutrition status in a sample of at-risk malnourished prefrail/frail patients (thus likely to benefit most from nutrition therapy). As hospitalised patients have greater energy deficits due to catabolic stress of acute illness, they are a population that requires careful determination of energy/protein requirements and in whom additive effects of nutrition supplementation to exercise may have greatest impact on outcomes such as muscle strength.<sup>53</sup> As none of the studies in the present review reported on energy deficits, it is not known whether these patients received adequate replacement. Nutrition supplementation should also not be confused with nutrition or diet modifications. The provision of ONS alone is unlikely to augment diet adequacy as completely as diet modification that involves a wider range of nutrients and non-nutrients,<sup>55</sup> especially when led by dietitians.<sup>56 57</sup>

For both exercise and nutrition-based interventions, an understanding of patient participation dynamics and compliance is required because of how they can impact on effectiveness.<sup>58</sup> Only five studies in this review reported attendance to programme/home visits or phone calls or

adherence to prescribed exercise/diet or related advice at rates of 50%–90% and 70%–93% for nutrition and exercise interventions, respectively. Issues with participants resulting in poorer compliance were not reported in these articles, such that the authors recommend that future studies explore barriers and enablers to adherence in multimodal interventions.

Cognition is another critical domain in the multidimensional nature of frailty. Exercise<sup>59</sup> and nutrition interventions<sup>60</sup> may have a far-reaching, positive effect on cognition in older adults. However, there was no evidence of an impact on cognition from a single study<sup>42</sup> in the present review. This is consistent with a network meta-analysis of 13 RCTs that examined exercise and nutrition interventions in frail older adults.<sup>11</sup> One suggested explanation is that different neuronal mechanisms could result in a misfit between combinatory approaches of nutrition and physical interventions<sup>61</sup> highlighting that more in-depth research is required.<sup>62</sup>

The economic delivery of new interventions and models of care is important to a range of stakeholders,<sup>63</sup> but has been infrequently conducted in previous studies.<sup>50</sup> In this review, only 2 out of 11 studies included an economic analysis, with the majority of costs coming from delivery of exercise and nutrition support. The types of consumables that were considered in analyses included nutrition supplements, ankle/wrist weights, mobility aids and medications. Elements of service provision that were considered included community, rehabilitation, residential and transition care service use, which were often reduced and contributed to the net result. The results of this review support previous findings of beneficial effects on frailty-related outcomes, without increased costs.<sup>50</sup> However, results should be interpreted with caution as omission of other services (such as medication reviews) within a multimodal intervention can impact costings, and there are instances where interventions have not been found to be more-cost effective than usual care.<sup>64</sup> The approach of streamlining and reorganising existing services rather than creating entirely new systems may be preferred.

### Strength and weakness

This study was robust and underwent peer review by an academic librarian. We did not have a language restriction on the search, and we did not find nor include studies in other languages. We chose to use an updated version of the Cochrane risk-of-bias tool (RoB-2), which addresses issues of confusion common to its first version.

By focussing on exercise-nutrition interventions only, this study addresses a gap as identified in a recent review of multidomain interventions in prefrail or frail elderly adults, in which some interventions may have been too broad to directly impact frailty, and functional and cognitive status.<sup>52</sup> Multidisciplinary team-based approaches remain recommended and are a bedrock of quality standard care; they may also already include goals for exercise and nutrition such that it may be difficult to solely attribute outcomes to a targeted but supplementary

exercise-nutrition programme. Social relationships affect health behaviour and physical health,<sup>65</sup> such that intervention benefits may in part come from social interactions. Nevertheless, several studies<sup>29 33 44</sup> have demonstrated significant improvements even when control participants are provided with the social aspect of an intervention, such that exercise and nutrition are expected to improve outcomes independent of social interactions. Among the three studies<sup>29 33 40</sup> included in the meta-analysis of reduction in frailty score, one study<sup>33</sup> included patients from community. However, when combined with data from the other two studies,<sup>29 40</sup> participants recruited from the hospital made up majority (~80%) of the entire cohort in that meta-analysis.

### Implications and future research

This review is a useful resource for researchers and multidisciplinary clinicians who are seeking to generate evidence or evaluate their practices of exercise-nutrition interventions for pre-frail/frail hospitalised older adults. The authors' interpretation of the quality of studies in this review is that the evidence base is low, but the inclusion of future studies may change estimates of the intervention effects. While blinding of participants to the intervention is acknowledged to be difficult, future studies should be adequately powered, use allocation concealment with blinding outcome assessors and data analysts at least. Improved reporting of intervention details is also required,<sup>66</sup> which may assist in answering research questions around the optimal duration, dose, modality and timing of intervention(s) across the hospital to community continuum. In the present review, potential beneficial effects of combined interventions could have been negated given the short durations reported by most studies. Thus, future studies may be extended for >6–12 months, or employ principles of chronic condition self-management,<sup>67</sup> to determine delayed improvements and achieve long-lasting sustainability of interventions. The lack of evidence from non-western countries, or low-income and middle-income countries indicate the need for research to be conducted in those populations too. There are many ongoing research activities relevant to the scope of this review,<sup>68–71</sup> yet only one has reported plans for economic analysis in the study protocol.<sup>68</sup> Economic evaluations can expand current evidence on the sustainability of incorporating such services within resource-constrained healthcare systems.

### CONCLUSION

Exercise-nutrition interventions that start while patients are admitted to hospital and continue in the community/posthospital, or, commence early postdischarge, appear to be effective in reducing frailty and some frailty-related physical indicators. Although effective, the quality of the evidence in this review is low as most studies included had some concerns for risk of bias. Given the paucity of high-quality studies on the effectiveness of combined



exercise-nutrition interventions on hospitalised frail older adult patients, more robust research that pays attention to effect of assignment to intervention is needed to increase the confidence in results.

**Acknowledgements** The authors would like to thank the librarians at Gus Fraenkel Medical Library, Flinders University for their support with the study.

**Contributors** All authors contributed to the conception and design of review. CYH and YS read and screened titles and abstract of potentially relevant studies. CH and YS evaluated the selected studies and performed data extraction. CYH, MM, AY, CB reviewed the evidence. RW provided statistical expertise on meta-analyses. CYH drafted the article and all authors provided critical revisions and final approval of the manuscript. All authors had access to the data in the study and can take responsibility for the integrity of the reported findings. All authors fulfil the ICMJE criteria for authorship.

**Funding** The authors have not declared a specific grant for this research from any funding agency in the public, commercial or not-for-profit sectors.

**Competing interests** None declared.

**Patient consent for publication** Not required.

**Provenance and peer review** Not commissioned; externally peer reviewed.

**Data availability statement** Data may be obtained from a third party and are not publicly available. No data are available. Details of the excluded papers are available from the corresponding author on request.

**Supplemental material** This content has been supplied by the author(s). It has not been vetted by BMJ Publishing Group Limited (BMJ) and may not have been peer-reviewed. Any opinions or recommendations discussed are solely those of the author(s) and are not endorsed by BMJ. BMJ disclaims all liability and responsibility arising from any reliance placed on the content. Where the content includes any translated material, BMJ does not warrant the accuracy and reliability of the translations (including but not limited to local regulations, clinical guidelines, terminology, drug names and drug dosages), and is not responsible for any error and/or omissions arising from translation and adaptation or otherwise.

**Open access** This is an open access article distributed in accordance with the Creative Commons Attribution Non Commercial (CC BY-NC 4.0) license, which permits others to distribute, remix, adapt, build upon this work non-commercially, and license their derivative works on different terms, provided the original work is properly cited, appropriate credit is given, any changes made indicated, and the use is non-commercial. See: <http://creativecommons.org/licenses/by-nc/4.0/>.

#### ORCID iDs

Chad Yixian Han <http://orcid.org/0000-0002-0756-6344>

Yogesh Sharma <http://orcid.org/0000-0002-7716-2599>

#### REFERENCES

- 1 Le Cossec C, Perrine A-L, Beltzer N, et al. Pre-frailty, frailty, and multimorbidity: prevalences and associated characteristics from two French national surveys. *J Nutr Health Aging* 2016;20:860-9.
- 2 Fried LP, Tangen CM, Walston J, et al. Frailty in older adults: evidence for a phenotype. *The Journals of Gerontology Series A: Biological Sciences and Medical Sciences* 2001;56:M146-57.
- 3 Theou O, Squires E, Mallery K, et al. What do we know about frailty in the acute care setting? A scoping review. *BMC Geriatr* 2018;18:139.
- 4 Considine J, Fox K, Plunkett D, et al. Factors associated with unplanned readmissions in a major Australian health service. *Aust Health Review* 2019;43:1-9.
- 5 Sirven N, Rapp T. The cost of frailty in France. *Eur J Health Econ* 2017;18:243-53.
- 6 Thompson MQ, Theou O, Karnon J, et al. Frailty prevalence in Australia: findings from four pooled Australian cohort studies. *Australas J Ageing* 2018;37:155-8.
- 7 Giné-Garriga M, Roqué-Figuls M, Coll-Planas L, et al. Physical exercise interventions for improving performance-based measures of physical function in community-dwelling, frail older adults: a systematic review and meta-analysis. *Arch Phys Med Rehabil* 2014;95:753-69.
- 8 TP N, Feng L, Nyunt MS, et al. Nutritional, physical, cognitive, and combination interventions and frailty reversal among older adults: a randomized controlled trial. *Am J Med* 2015;128:1225-36.
- 9 Hsieh T-J, Su S-C, Chen C-W, et al. Individualized home-based exercise and nutrition interventions improve frailty in older adults: a randomized controlled trial. *Int J Behav Nutr Phys Act* 2019;16:119.
- 10 Lozano-Montoya I, Correa-Pérez A, Abraha I, et al. Nonpharmacological interventions to treat physical frailty and sarcopenia in older patients: a systematic overview - the Senator Project ontop Series. *Clin Interv Aging* 2017;12:721-40.
- 11 Abizanda P, López MD, García VP, et al. Effects of an oral nutritional supplementation plus physical exercise intervention on the physical function, nutritional status, and quality of life in frail institutionalized older adults: the activnes study. *J Am Med Dir Assoc* 2015;16:439.e9-439.e16.
- 12 Negm AM, Kennedy CC, Thabane L, et al. Management of frailty: a systematic review and network meta-analysis of randomized controlled trials. *J Am Med Dir Assoc* 2019;20:1190-8.
- 13 Rozzini R, Sabatini T, Cassinadri A, et al. Relationship between functional loss before hospital admission and mortality in elderly persons with medical illness. *J Gerontol A Biol Sci* 2005;60:1180-3.
- 14 Covinsky KE, Martin GE, Beyth RJ, et al. The relationship between clinical assessments of nutritional status and adverse outcomes in older hospitalized medical patients. *J Am Geriatr Soc* 1999;47:532-8.
- 15 Sharma Y, Thompson C, Shahi R, et al. Malnutrition in acutely unwell hospitalized elderly - "The skeletons are still rattling in the hospital closet". *J Nutr Health Aging* 2017;21:1210-5.
- 16 Sharma Y, Miller M, Shahi R, et al. Malnutrition screening in acutely unwell elderly inpatients. *British Journal of Nursing* 2016;25:1006-14.
- 17 Laur CV, McNicholl T, Valaitis R, et al. Malnutrition or frailty? overlap and evidence gaps in the diagnosis and treatment of frailty and malnutrition. *Appl Physiol Nutr Metab* 2017;42:449-58.
- 18 Rasmussen NML, Belqaid K, Lugnet K, et al. Effectiveness of multidisciplinary nutritional support in older hospitalised patients: a systematic review and meta-analyses. *Clinical Nutrition ESPEN* 2018;27:44-52.
- 19 Wilkinson R, Arensberg ME, Hickson M, et al. Frailty prevention and treatment: why registered dietitian Nutritionists need to take charge. *J Acad Nutr Diet* 2017;17:1001-9.
- 20 Higgins JP, Green S. *Cochrane Handbook for systematic reviews of interventions: cochrane book series*, 2008.
- 21 Moher D, Liberati A, Tetzlaff J, et al. Preferred reporting items for systematic reviews and meta-analyses: the PRISMA statement. *J Clin Epidemiol* 2009;62:1006-12.
- 22 Innovation VH. *Covidence systematic review software*. Veritas Health Innovation Melbourne, VIC, 2017.
- 23 Sterne JAC, Savović J, Page MJ, et al. Rob 2: a revised tool for assessing risk of bias in randomised trials. *BMJ* 2019;2:i4898. doi:10.1136/bmj.i4898
- 24 Farrah K, Young K, Tunis MC, et al. Risk of bias tools in systematic reviews of health interventions: an analysis of PROSPERO-registered protocols. *Syst Rev* 2019;8:280.
- 25 RevMan. *Review manager (revman)[computer program]*. version 5.3. Denmark: The Nordic Cochrane Centre, The Cochrane Collaboration Copenhagen, 2014.
- 26 Higgins JPT, Thompson SG, Deeks JJ. Measuring inconsistency in meta-analyses. *BMJ* 2003;327:557-60.
- 27 Villareal DT, Chode S, Parimi N, et al. Weight loss, exercise, or both and physical function in obese older adults. *N Engl J Med* 2011;364:1218-29.
- 28 Armamento-Villareal R, Aguirre LE, Qualls C, et al. Effect of lifestyle intervention on the hormonal profile of frail, obese older men. *J Nutr Health Aging* 2016;20:334-40.
- 29 Cameron ID, Fairhall N, Langron C, et al. A multifactorial interdisciplinary intervention reduces frailty in older people: randomized trial. *BMC Med* 2013;11:65.
- 30 Fairhall N, Sherrington C, Kurlle SE, et al. Effect of a multifactorial interdisciplinary intervention on mobility-related disability in frail older people: randomised controlled trial. *BMC Med* 2012;10:120.
- 31 Fairhall N, Sherrington C, Lord SR, et al. Effect of a multifactorial, interdisciplinary intervention on risk factors for falls and fall rate in frail older people: a randomised controlled trial. *Age Ageing* 2014;43:616-22.
- 32 Fairhall N, Sherrington C, Kurlle SE, et al. Economic evaluation of a multifactorial, interdisciplinary intervention versus usual care to reduce frailty in frail older people. *J Am Med Dir Assoc* 2015;16:41-8.
- 33 Luger E, Dorner TE, Haider S, et al. Effects of a home-based and Volunteer-Administered physical training, nutritional, and social support program on malnutrition and frailty in older persons: a randomized controlled trial. *J Am Med Dir Assoc* 2016;17:671.e9-671.e16.
- 34 Haider S, Dorner TE, Luger E, et al. Impact of a home-based physical and nutritional intervention program conducted by Lay-Volunteers



- on handgrip strength in Prefrail and frail older adults: a randomized control trial. *PLoS One* 2017;12:e0169613.
- 35 Winzer E, Dorner TE, Grabovac I, et al. Behavior changes by a buddy-style intervention including physical training, and nutritional and social support. *Geriatr Gerontol Int* 2019;19:323–9.
  - 36 Kapan A, Luger E, Haider S, et al. Fear of falling reduced by a lay led home-based program in frail community-dwelling older adults: a randomised controlled trial. *Arch Gerontol Geriatr* 2017;68:25–32.
  - 37 Kapan A, Winzer E, Haider S, et al. Impact of a lay-led home-based intervention programme on quality of life in community-dwelling pre-frail and frail older adults: a randomized controlled trial. *BMC Geriatr* 2017;17:1–11.
  - 38 Haider S, Grabovac I, Winzer E, et al. Change in inflammatory parameters in prefrail and frail persons obtaining physical training and nutritional support provided by lay volunteers: a randomized controlled trial. *PLoS One* 2017;12:e0185879.
  - 39 Arrieta H, Astrugue C, Regueme S, et al. Effects of a physical activity programme to prevent physical performance decline in onco-geriatric patients: a randomized multicentre trial. *J Cachexia Sarcopenia Muscle* 2019;10:287–97.
  - 40 Niccoli S, Kolobov A, Bon T, et al. Whey protein supplementation improves rehabilitation outcomes in hospitalized geriatric patients: a double blinded, randomized controlled trial. *J Nutr Gerontol Geriatr* 2017;36:149–65.
  - 41 Milte R, Miller M, Crotty M, et al. Cost-Effectiveness of individualized nutrition and exercise therapy for rehabilitation following hip fracture. *J Rehabil Med* 2016;48:378–85.
  - 42 Singh NA, Quine S, Clemson LM, et al. Effects of high-intensity progressive resistance training and targeted multidisciplinary treatment of frailty on mortality and nursing home admissions after hip fracture: a randomized controlled trial. *J Am Med Dir Assoc* 2012;13:24–30.
  - 43 Blanc-Bisson C, Dechamps A, Gouspillou G, et al. A randomized controlled trial on early physiotherapy intervention versus usual care in acute CAR unit for elderly: potential benefits in light of dietary intakes. *J Nutr Health Aging* 2008;12:395–9.
  - 44 Miller MD, Crotty M, Whitehead C, et al. Nutritional supplementation and resistance training in nutritionally at risk older adults following lower limb fracture: a randomized controlled trial. *Clin Rehabil* 2006;20:311–23.
  - 45 Rodriguez-Mañas L, Laosa O, Vellas B, et al. Effectiveness of a multimodal intervention in functionally impaired older people with type 2 diabetes mellitus. *J Cachexia Sarcopenia Muscle* 2019;10:721–33.
  - 46 Azad N, Molnar F, Byszewski A. Lessons learned from a multidisciplinary heart failure clinic for older women: a randomised controlled trial. *Age Ageing* 2008;37:282–7.
  - 47 Romero-Ortuno R, Walsh CD, Lawlor BA, et al. A frailty instrument for primary care: findings from the survey of health, ageing and retirement in Europe (share). *BMC Geriatr* 2010;10:57.
  - 48 Haider S, Dorner TE, Luger E, et al. Impact of a home-based physical and nutritional intervention program conducted by lay-volunteers on handgrip strength in prefrail and frail older adults: a randomized control trial. *PLoS One* 2017;12:e0169613.
  - 49 Wright J, Baldwin C. Oral nutritional support with or without exercise in the management of malnutrition in nutritionally vulnerable older people: a systematic review and meta-analysis. *Clinical Nutrition* 2018;37:1879–91.
  - 50 Apóstolo J, Cooke R, Bobrowicz-Campos E, et al. Effectiveness of interventions to prevent pre-frailty and frailty progression in older adults. *JBI Database of Systematic Reviews and Implementation Reports* 2018;16:140–232.
  - 51 de Vries NM, Staal JB, van Ravensberg CD, et al. Outcome instruments to measure frailty: a systematic review. *Ageing Res Rev* 2011;10:104–14.
  - 52 Dedebye L, Deschodt M, Verschuere S, et al. Effects of multi-domain interventions in (pre)frail elderly on frailty, functional, and cognitive status: a systematic review. *Clin Interv Aging* 2017;12:873–96.
  - 53 Tarazona-Santabalbina FJ, Gómez-Cabrera MC, Pérez-Ros P, et al. A multicomponent exercise intervention that reverses frailty and improves cognition, emotion, and social networking in the community-dwelling frail elderly: a randomized clinical trial. *J Am Med Dir Assoc* 2016;17:426–33.
  - 54 Kim C-O, Lee K-R. Preventive effect of protein-energy supplementation on the functional decline of frail older adults with low socioeconomic status: a community-based randomized controlled study. *J Gerontol A Biol Sci* 2013;68:309–16.
  - 55 Denison HJ, Cooper C, Sayer AA, et al. Prevention and optimal management of sarcopenia: a review of combined exercise and nutrition interventions to improve muscle outcomes in older people. *Clin Interv Aging* 2015;10:859.
  - 56 Munk T, Tolstrup U, Beck AM, et al. Individualised dietary counselling for nutritionally at-risk older patients following discharge from acute hospital to home: a systematic review and meta-analysis. *J Hum Nutr Diet* 2016;29:196–208.
  - 57 Beck AM, Kjær S, Hansen BS, et al. Follow-Up home visits with registered dietitians have a positive effect on the functional and nutritional status of geriatric medical patients after discharge: a randomized controlled trial. *Clin Rehabil* 2013;27:483–93.
  - 58 Fairhall N, Sherrington C, Cameron ID, et al. A multifactorial intervention for frail older people is more than twice as effective among those who are compliant: complier average causal effect analysis of a randomised trial. *J Physiother* 2017;63:40–4.
  - 59 Brisswalter J, Collardeau M, René A. Effects of acute physical exercise characteristics on cognitive performance. *Sports Medicine* 2002;32:555–66.
  - 60 Klímová B, Vališ M. Nutritional interventions as beneficial strategies to delay cognitive decline in healthy older individuals. *Nutrients* 2018;10:905.
  - 61 Schättin A, Baur K, Stutz J, et al. Effects of physical exercise combined with nutritional supplements on aging brain related structures and functions: a systematic review. *Front Aging Neurosci* 2016;8:161.
  - 62 Hardman RJ, Kennedy G, Macpherson H, et al. A randomised controlled trial investigating the effects of Mediterranean diet and aerobic exercise on cognition in cognitively healthy older people living independently within aged care facilities: the Lifestyle Intervention in Independent Living Aged Care (LILAC) study protocol [ACTRN12614001133628]. *Nutr J* 2015;14:53.
  - 63 Drummond MF, Stoddart GL. Economic analysis and clinical trials. *Control Clin Trials* 1984;5:115–28.
  - 64 Ruikes FGH, Adang EM, Assendelft WJJ, et al. Cost-Effectiveness of a multicomponent primary care program targeting frail elderly people. *BMC Fam Pract* 2018;19:62.
  - 65 Umberson D, Karas Montez J. Social relationships and health: a flashpoint for health policy. *J Health Soc Behav* 2010;51:S54–66.
  - 66 Hoffmann TC, Glasziou PP, Boutron I, et al. Better reporting of interventions: template for intervention description and replication (TIDieR) checklist and guide. *BMJ* 2014;348:g1687.
  - 67 Battersby M, Harris M, Smith D, et al. A pragmatic randomized controlled trial of the Flinders program of chronic condition management in community health care services. *Patient Educ Couns* 2015;98:1367–75.
  - 68 Fairhall N, Kurrle SE, Sherrington C, et al. Effectiveness of a multifactorial intervention on preventing development of frailty in pre-frail older people: study protocol for a randomised controlled trial. *BMJ Open* 2015;5:e007091.
  - 69 González-Sánchez M, Cuesta-Vargas AI, del Mar Rodríguez González M, et al. Effectiveness of a multicomponent workout program integrated in an evidence based multimodal program in hyperfrail elderly patients: POWERAGING randomized clinical trial protocol. *BMC Geriatr* 2019;19.
  - 70 Jadczak AD, Luscombe-Marsh N, Taylor P, et al. The express study: exercise and protein effectiveness supplementation study supporting autonomy in community dwelling frail older people-study protocol for a randomized controlled pilot and feasibility study. *Pilot Feasibility Stud* 2018;4:8.
  - 71 Landi F, Cesari M, Calvani R, et al. The “Sarcopenia and Physical Frailty IN older people: multi-component Treatment strategies” (SPRINT) randomized controlled trial: design and methods. *Ageing Clin Exp Res* 2017;29:89–100. doi:10.1007/s40520-016-0715-2