

Retrospective Study

Prognostic value of the preoperative fibrinogen-to-albumin ratio in pancreatic ductal adenocarcinoma patients undergoing R0 resection

Li-Peng Zhang, Hu Ren, Yong-Xing Du, Cheng-Feng Wang

ORCID number: Li-Peng Zhang 0000-0001-5204-6383; Hu Ren 0000-0001-7274-287X; Yong-Xing Du 0000-0003-3334-6561; Cheng-Feng Wang 0000-0002-5589-7391.

Author contributions: Zhang LP was involved in study concept, data analysis, and production of tables, wrote the first draft, and revised it critically in light of comments from other authors; Ren H and Du YX helped to collect the clinical data and followed up with the patients; Wang CF was involved in study conception and design, data interpretation, manuscript revision, and discussion; all authors approved the final version submitted.

Supported by National Natural Science Foundation of China, No. 81972314; and Innovation Fund for Medical Sciences of Chinese Academy of Medical Sciences, No. 2016-I2M-1-001.

Institutional review board statement: The study was reviewed and approved by The National Cancer Center/Cancer Hospital of the Chinese Academy of Medical Sciences.

Informed consent statement: All patients and their families signed informed consent statements before surgery, and the type of

Li-Peng Zhang, Hu Ren, Yong-Xing Du, Cheng-Feng Wang, Department of Pancreatic and Gastric Surgery, National Cancer Center/National Clinical Research Center for Cancer/Cancer Hospital, Chinese Academy of Medical Sciences and Peking Union Medical College, Beijing 100021, China

Cheng-Feng Wang, State Key Lab of Molecular Oncology, National Cancer Center/National Clinical Research Center for Cancer/Cancer Hospital, Chinese Academy of Medical Sciences and Peking Union Medical College, Beijing 100021, China

Corresponding author: Cheng-Feng Wang, MD, Chief Doctor, Professor, Department of Pancreatic and Gastric Surgery, National Cancer Center/National Clinical Research Center for Cancer/Cancer Hospital, Chinese Academy of Medical Sciences and Peking Union Medical College, No. 17 Panjiayuan Nanli, Chaoyang District, Beijing 100021, China.

ywwangchengfeng@163.com

Abstract

BACKGROUND

Inflammation plays an important role in tumor progression, and growing evidence has confirmed that the fibrinogen-to-albumin ratio (FAR) is an important prognostic factor for overall survival in malignant tumors.

AIM

To investigate the prognostic significance of FAR in patients undergoing radical R0 resection of pancreatic ductal adenocarcinoma (PDAC).

METHODS

We retrospectively analyzed the data of 282 patients with PDAC who underwent radical R0 resection at The Cancer Hospital of the Chinese Academy of Medical Sciences from January 2010 to December 2019. The `surv_cutpoint` function of the R package `survminer` via RStudio software (version 1.3.1073, <http://www.rstudio.org>) was used to determine the optimal cut-off values of biological markers, such as preoperative FAR. The Kaplan-Meier method and log-rank tests were used for univariate survival analysis, and a Cox regression model was used for multivariate survival analysis for PDAC patients who underwent radical R0 resection.

RESULTS

The optimal cut-off value of FAR was 0.08 by the `surv_cutpoint` function. Higher

surgical procedure was performed according to the authoritative guidelines.

Conflict-of-interest statement: The authors declare that they have no conflicts of interest.

Data sharing statement: No additional data are available.

Open-Access: This article is an open-access article that was selected by an in-house editor and fully peer-reviewed by external reviewers. It is distributed in accordance with the Creative Commons Attribution NonCommercial (CC BY-NC 4.0) license, which permits others to distribute, remix, adapt, build upon this work non-commercially, and license their derivative works on different terms, provided the original work is properly cited and the use is non-commercial. See: <http://creativecommons.org/licenses/by-nc/4.0/>

Manuscript source: Unsolicited manuscript

Specialty type: Gastroenterology and hepatology

Country/Territory of origin: China

Peer-review report's scientific quality classification

Grade A (Excellent): 0
Grade B (Very good): B
Grade C (Good): C
Grade D (Fair): 0
Grade E (Poor): 0

Received: September 23, 2020

Peer-review started: September 23, 2020

First decision: October 27, 2020

Revised: October 29, 2020

Accepted: November 13, 2020

Article in press: November 13, 2020

Published online: December 14, 2020

P-Reviewer: Isaji S

S-Editor: Huang P

L-Editor: Filipodia

P-Editor: Wang LL



preoperative FAR was significantly correlated with clinical symptoms ($P = 0.001$), tumor location ($P < 0.001$), surgical approaches ($P < 0.001$), preoperative plasma fibrinogen concentration ($P < 0.001$), and preoperative plasma albumin level ($P < 0.001$). Multivariate analysis showed that degree of tumor differentiation ($P < 0.001$), number of metastatic lymph nodes [hazard ratio (HR): 0.678, 95% confidence interval (CI): 0.509-0.904, $P = 0.008$], adjuvant therapy (HR: 1.604, 95%CI: 1.214-2.118, $P = 0.001$), preoperative cancer antigen 19-9 level (HR: 1.740, 95%CI: 1.288-2.352, $P < 0.001$), and preoperative FAR (HR: 2.258, 95%CI: 1.720-2.963, $P < 0.001$) were independent risk factors for poor prognosis in patients with PDAC who underwent radical R0 resection.

CONCLUSION

The increase in preoperative FAR was significantly related to poor prognosis in patients undergoing radical R0 resection for PDAC. Preoperative FAR can be used clinically to predict the prognosis of PDAC patients undergoing radical R0 resection.

Key Words: Pancreatic ductal adenocarcinoma; R0 resection; Fibrinogen-to-albumin ratio; Biomarker; Prognosis; Survival

©The Author(s) 2020. Published by Baishideng Publishing Group Inc. All rights reserved.

Core Tip: Inflammation plays an important role in the occurrence and development of tumors. Recently, many retrospective studies have reported the significance of the fibrinogen-to-albumin ratio in the prognosis of patients with malignant tumors, but there have been no reports of patients with resectable pancreatic cancer. We studied 282 patients with pancreatic ductal adenocarcinoma who underwent radical R0 resection, and we found that the preoperative fibrinogen-to-albumin ratio is an easily available, cost-effective, and noninvasive prognostic indicator for pancreatic ductal adenocarcinoma patients undergoing radical R0 resection.

Citation: Zhang LP, Ren H, Du YX, Wang CF. Prognostic value of the preoperative fibrinogen-to-albumin ratio in pancreatic ductal adenocarcinoma patients undergoing R0 resection. *World J Gastroenterol* 2020; 26(46): 7382-7404

URL: <https://www.wjgnet.com/1007-9327/full/v26/i46/7382.htm>

DOI: <https://dx.doi.org/10.3748/wjg.v26.i46.7382>

INTRODUCTION

Of all the malignancies, pancreatic cancer has the worst prognosis, with mortality roughly comparable to the incidence^[1]. Pancreatic cancer is the sixth most common cause of cancer-related deaths (2.82%) in China^[2]. Globally, pancreatic cancer is the fourth leading cause of cancer-related death^[3]. With the annual increase in pancreatic cancer-related deaths, it is estimated that by 2030, just a decade from now, malignant tumors will be the second leading cause of cancer-related deaths in the United States^[4]. Based on the latest data from the Surveillance, Epidemiology, and End Results database of the National Cancer Institute, the 5-year overall survival (OS) rate for pancreatic cancer patients is only 10% in the United States^[5,6]. At present, radical surgical resection is still an important method, or even the only way, to prolong significantly the survival time of pancreatic cancer patients^[7]. Nevertheless the 5-year OS rate of patients undergoing radical resection is still less than 20%^[8,9], despite the concept of surgery-based comprehensive treatment being constantly practiced and updated in clinical work^[6]. Moreover, only 20% of patients diagnosed with pancreatic cancer have access to surgical treatment^[10]. The poor prognosis of pancreatic cancer patients is related to the early asymptomatic nature of the disease, leading to the late stage of disease diagnosis and the high possibility of distant metastasis in the early stage of pancreatic cancer^[11]. Since pancreatic cancer has a poor overall prognosis and many patients may choose to refuse treatment, it is particularly important to explore simple and cost-effective biomarkers to help better predict patient OS before

treatment, especially for patients who have the opportunity to undergo surgery.

The systemic inflammatory response is a key factor in promoting the occurrence and metastasis of malignant tumors, including pancreatic cancer^[12-14]. Pancreatic cancer can also lead to a hypercoagulable state and cause obvious thrombosis in the patient^[15], in which fibrinogen plays a vital role. At the same time, the plasma albumin level is also affected by the systemic inflammatory response^[16], and it is also a key indicator of nutritional status in malignant tumor patients^[17,18].

Recently, growing evidence has confirmed that fibrinogen-to-albumin ratio (FAR), the ratio of preoperative fibrinogen concentration to plasma albumin level, is an important predictor of the OS of patients with esophageal cancer^[19], breast cancer^[20,21], and liver cancer^[22] after radical surgery. However, to date, there have been no reports discussing the association between FAR and the prognosis of patients with pancreatic ductal adenocarcinoma (PDAC) undergoing radical R0 resection. Here, we conducted a retrospective study to explore whether FAR has prognostic value in these patients.

MATERIALS AND METHODS

Patients

The inclusion criteria were as follows: (1) Positron emission tomography/computed tomography (CT) examination or enhanced magnetic resonance imaging and/or CT scan confirmed no distant metastasis; (2) Radical pancreaticoduodenectomy or distal pancreatectomy with splenectomy was performed; (3) The pathologic diagnosis was PDAC and radical R0 resection (no tumor cells within 1 mm from the resection margins) was performed^[23]; and (4) Complete clinical information and follow-up data were available.

The exclusion criteria were as follows: (1) A history of cancer or other malignant tumors at the same time; (2) Received neoadjuvant therapy before surgery; (3) Presence of acute or chronic inflammatory diseases; (4) Presence of anemia or other blood system diseases; (5) Received anticoagulant therapy or albumin infusion before surgery; (6) Abnormal liver function or complicated with other liver diseases; and (7) Death occurred during the perioperative period, 1 mo after the operation.

In total, we retrospectively analyzed the data of 282 patients with PDAC who underwent radical R0 resection at The National Cancer Center/Cancer Hospital of the Chinese Academy of Medical Sciences from January 2010 to December 2019.

Data collection

All clinicopathological characteristics included age, sex, blood type, clinical symptoms (including jaundice, pain, digestive symptoms, weight loss, fatigue, *etc.*), diabetes, smoking status, alcohol consumption, family history of cancer, approaches of open surgery, tumor information (including tumor location, degree of differentiation, lymphovascular invasion, perineural invasion, capsular invasion, maximum tumor diameter, number of metastatic lymph nodes), T stage, N stage, Tumor-Node-Metastasis (TNM) stage, adjuvant therapy, preoperative cancer antigen 19-9 (CA19-9) level (U/mL), preoperative plasma fibrinogen concentration (g/L), preoperative plasma albumin level (g/L), and preoperative FAR.

The age of the patients refers to the age at which the primary ductal adenocarcinoma of the pancreas was clearly diagnosed. T staging, N staging, and TNM staging were defined according to the eighth edition of the TNM classification standard of the American Joint Committee on Cancer^[24].

Ethical statement

The study was conducted according to the ethical standards of the World Medical Association Declaration of Helsinki (9th edition of July 2018) and was approved by the Medical Ethics Committee of The National Cancer Center/Cancer Hospital of the Chinese Academy of Medical Sciences (approval No. 17-168/1424). All patients in the group also signed a written informed consent form.

Fibrinogen and albumin measurements

The patient's blood samples were collected before breakfast within 7 d before operation and processed quickly (within 2 h). Fibrinogen was processed and measured by a CA7000 automatic coagulation analyzer (Sysmex Corporation, Kobe, Japan). Serum albumin was measured by the bromocresol green dye method. The normal reference value of plasma fibrinogen concentration is 2.0-4.0 g/L, and the normal

reference value of plasma albumin is 40.0-55.0 g/L.

FAR

FAR was defined as the ratio of the preoperative plasma fibrinogen concentration to the preoperative plasma albumin level.

Treatments and follow-up

All patients underwent radical surgery for PDAC, including pancreaticoduodenectomy and distal pancreatectomy with splenectomy, at The National Cancer Center/Cancer Hospital of Chinese Academy of Medical Sciences.

All patients were followed up by reviewing outpatient medical records and by telephone follow-up. The patients were followed up every 3 mo for the first 2 years and every 6 mo thereafter, and we recorded the results of physical, laboratory, and imaging examinations in detail. The date on which the patient underwent surgery was the beginning of the follow-up period, and the OS time was defined from the date of surgery to the date of death or the deadline for follow-up. The last follow-up date was August 16, 2020.

Statistical analysis

Continuous data with a normal distribution are shown as the mean \pm standard deviation (Kolmogorov-Smirnov test, $P > 0.05$), and those with a nonnormal distribution are expressed as the median (minimum-maximum). Frequencies and percentages were used for the categorical variables. Statistical analyses were performed using RStudio software (version 1.3.1073, <http://www.rstudio.org>), SPSS software (version 25.0; IBM Corp., Armonk, NY, United States), and GraphPad Prism software (version 8.02; GraphPad Software, Inc., La Jolla, CA, United States). The *surv_cutpoint* function was used to determine the optimal cut-off value for preoperative plasma fibrinogen, albumin, and FAR. Clinicopathological characteristics at baseline were compared by the chi-square test and independent samples *t*-test. The Kaplan-Meier method was used to calculate the cumulative survival rate, and the log-rank test was used to compare survival curves. A multivariate Cox proportional hazards model was used to test further prognostic factors proven statistically significant in the univariate analysis. The results were calculated with 95% confidence intervals (CIs), and a two-tailed $P < 0.05$ was considered statistically significant.

RESULTS

Patient characteristics

A total of 282 patients with PDAC who underwent radical R0 resection at The National Cancer Center/Cancer Hospital of the Chinese Academy of Medical Sciences from January 2010 to December 2019 were included in this retrospective study, with a median follow-up of 14.98 mo. A total of 217 patients died during the follow-up period, with an estimated median OS of 17.43 mo (range: 1.30-100.07 mo). The 1-, 2-, 3-, and 5-year postoperative survival rates were 67.5%, 35.9%, 20.4%, and 10.2%, respectively. We analyzed the clinical indicators of all patients who met the inclusion criteria and found that the median age of these patients at diagnosis was 61 years (range: 31-81 years), with 136 (48.2%) of the patients being over 60 years of age. Of these patients, 151 (53.5%) were male, and 225 (79.8%) patients were seen for the presence of clinical symptoms that included jaundice, pain, digestive symptoms, weight loss, and fatigue. A total of 130 (46.1%) patients had tumors located in the head or neck of the pancreas and underwent pancreaticoduodenectomy, and 158 (56.0%) patients received further adjuvant therapy after surgery. A total of 217 (77.0%) patients had a histologic diagnosis of moderate differentiation. Based on the TNM staging criteria, only 29 (10.3%) patients were classified as stage III. Details of the patients' baseline characteristics are shown in [Table 1](#).

Determination of optimal cut-off values for survival analysis

Based on the R programming language, R packages offer a collection of functions and data sets. The R package *survminer* provides convenient survival analysis and visualization capabilities, in which the *surv_cutpoint* function determines the optimal cut-off value for one or more continuous variables and plots survival curves for these variables, calculating the hazard ratio and the upper and lower limits of the 95% CIs. We used the *surv_cutpoint* function to determine the optimal cut-off values for

Table 1 Baseline characteristics of 282 pancreatic ductal adenocarcinoma patients who underwent R0 resection, *n* (%)

Characteristic	Patients, <i>n</i> = 282
Age in yr	61 (31-81)
> 60	136 (48.2)
≤ 60	146 (51.8)
Sex	
Male	151 (53.5)
Female	131 (46.5)
Clinical symptoms	
Absent	57 (20.2)
Present	225 (79.8)
Diabetes	
Absent	201 (71.3)
Present	81 (28.7)
Smoking status	
Absent	215 (76.2)
Present	67 (23.8)
Alcohol consumption	
Absent	235 (83.3)
Present	47 (16.7)
Family history of cancer	
Absent	271 (96.1)
Present	11 (3.9)
Blood type	
A	87 (30.9)
B	93 (33.0)
AB	22 (7.8)
O	80 (28.4)
Tumor location	
Head and neck	130 (46.1)
Body and tail	152 (53.9)
Approaches of open surgery	
Pancreaticoduodenectomy	130 (46.1)
Distal pancreatectomy with splenectomy	152 (53.9)
Degree of differentiation	
Well	34 (12.1)
Moderately	217 (77.0)
Poorly	31 (11.0)
Lymphovascular invasion	
Absent	203 (72.0)
Present	79 (28.0)
Perineural invasion	
Absent	70 (24.8)

Present	212 (75.2)
Capsular invasion	
Absent	49 (17.4)
Present	233 (82.6)
Maximum tumor diameter in cm	
> 4	88 (31.2)
≤ 4	194 (68.8)
T stage	
T1	34 (12.1)
T2	159 (56.4)
T3	89 (31.6)
Number of metastatic lymph nodes	
Absent	161 (57.1)
Present	121 (42.9)
N stage	
N0	161 (57.1)
N1	92 (32.6)
N2	29 (10.3)
TNM stage	
IA	20 (7.1)
IB	92 (32.6)
IIA	49 (17.4)
IIB	92 (32.6)
III	29 (10.3)
Adjuvant therapy	
Absent	124 (44.0)
Present	158 (56.0)
Preoperative CA19-9 level in U/mL	
> 336.4	77 (27.3)
≤ 336.4	205 (72.7)
Preoperative plasma fibrinogen concentration in g/L	
> 3.31	141 (50.0)
≤ 3.31	141 (50.0)
Preoperative plasma albumin level in g/L	
> 45.2	85 (30.1)
≤ 45.2	197 (69.9)
Preoperative FAR	
> 0.08	126 (44.7)
≤ 0.08	156 (55.3)

FAR: Fibrinogen-to-albumin ratio; TNM: Tumor-Node-Metastasis.

preoperative fibrinogen, albumin, and FAR, which were 3.31 g/L, 45.2 g/L, and 0.08, respectively, and the optimal cut-off values for these indicators were also validated by their respective receiver operating characteristic curves, as shown in [Figure 1](#).

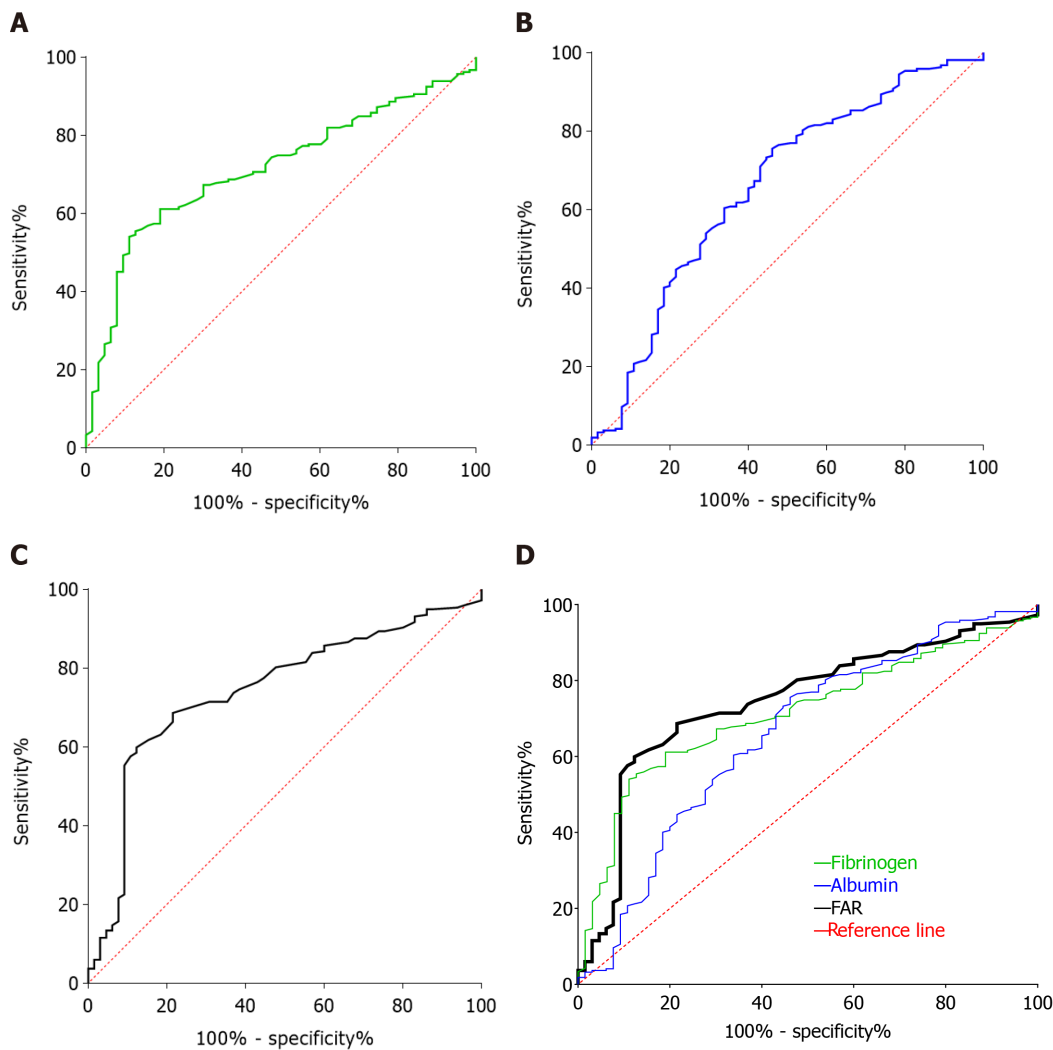


Figure 1 Receiver operating characteristics curve analysis based on preoperative fibrinogen concentration, albumin level, and fibrinogen-to-albumin ratio for overall survival. A: The area under the receiver operating characteristics curve (AUC) indicates the diagnostic power of preoperative plasma fibrinogen concentration. In this model, the optimum cut-off point for fibrinogen concentration was 3.31 g/L, AUC was 0.714 (95% confidence interval (CI): 0.649-0.779), with a sensitivity of 61.14% and a specificity of 79.37% by the Youden's index; B: The AUC indicates the diagnostic power of preoperative plasma albumin level. In this model, the optimum cut-off point for albumin level was 45.2 g/L, AUC was 0.659 (95%CI: 0.580-0.738), with a sensitivity of 75.58% and a specificity of 53.85% by the Youden's index; C: The AUC indicates the diagnostic power of preoperative fibrinogen-to-albumin ratio (FAR). In this model, the optimum cut-off point for FAR was 0.08, AUC was 0.743 (95%CI: 0.677-0.810), with a sensitivity of 59.91% and a specificity of 87.69% by the Youden's index; D: By comparing AUC, the diagnostic power of FAR was the most powerful.

The median preoperative fibrinogen concentration for all patients included in this study was 3.02 g/L (range: 1.20-6.70 g/L) (Table 1), with an optimal cut-off value of 3.31 g/L. As shown in Figure 1A, the area under the curve (AUC) of preoperative fibrinogen was 0.714 (95%CI: 0.649-0.779), and the sensitivity and specificity at the maximum Youden's Index were 61.14% and 79.37%, respectively. Based on this cut-off value, 141 patients had preoperative fibrinogen concentrations > 3.31/L, as detailed in Table 2.

The median preoperative albumin level for all patients enrolled in this study was 42.6 g/L (range: 23.2-54.0 g/L) (Table 1), and the optimal cut-off value was 45.2 g/L. As shown in Figure 1B, the AUC of preoperative albumin was 0.659 (95%CI: 0.580-0.738), and the sensitivity and specificity at the maximum Youden's Index were 75.58% and 53.85%, respectively. Based on this cut-off value, 197 patients had a preoperative albumin level ≤ 45.2 g/L, and 85 patients had a preoperative albumin level > 45.2 g/L, the details of which are shown in Table 3.

The median preoperative FAR for all patients included in this retrospective study was 0.07 (range: 0.03-0.21) (Table 1), and the optimal cut-off value was 0.08. As shown in Figure 1C, the AUC of preoperative FAR was 0.743 (95%CI: 0.677-0.810), with a sensitivity and specificity of 59.91% and 87.69%, respectively, at the maximum Youden's Index. Based on this optimal cut-off value, 156 patients had a preoperative

Table 2 Correlation between preoperative plasma fibrinogen concentration and clinicopathological characteristics in pancreatic ductal adenocarcinoma patients who underwent R0 resection, *n* (%)

Characteristics	Preoperative plasma fibrinogen concentration		P value
	> 3.31 g/L, <i>n</i> = 141	≤ 3.31 g/L, <i>n</i> = 141	
Age in yr			0.812
> 60	72 (25.5)	74 (26.2)	
≤ 60	69 (24.5)	67 (23.8)	
Sex			0.283
Male	71 (25.2)	80 (28.4)	
Female	70 (24.8)	61 (21.6)	
Clinical symptoms			< 0.001
Absent	15 (5.3)	42 (14.9)	
Present	126 (44.7)	99 (35.1)	
Diabetes			0.357
Absent	97 (34.4)	104 (36.9)	
Present	44 (15.6)	37 (13.1)	
Smoking status			0.889
Absent	107 (37.9)	108 (38.3)	
Present	34 (12.1)	33 (11.7)	
Alcohol consumption			0.263
Absent	121 (42.9)	114 (40.4)	
Present	20 (7.1)	27 (9.6)	
Family history of cancer			0.356
Absent	137 (48.6)	134 (47.5)	
Present	4 (1.4)	7 (2.5)	
Blood type			0.565
A	39 (13.8)	48 (17.0)	
B	51 (18.1)	42 (14.9)	
AB	10 (3.5)	12 (4.3)	
O	41 (14.5)	39 (13.8)	
Tumor location			< 0.001
Head and neck	80 (28.4)	50 (17.7)	
Body and tail	61 (21.6)	91 (32.3)	
Approaches of open surgery			< 0.001
Pancreaticoduodenectomy	80 (28.4)	50 (17.7)	
Distal pancreatectomy with splenectomy	61 (21.6)	91 (32.3)	
Degree of differentiation			0.079
Well	20 (7.1)	14 (5.0)	
Moderately	111 (39.4)	106 (37.6)	
Poorly	10 (3.5)	21 (7.4)	
Lymphovascular invasion			0.233
Absent	97 (34.4)	106 (37.6)	
Present	44 (15.6)	35 (12.4)	

Perineural invasion			0.054
Absent	28 (9.9)	42 (14.9)	
Present	113 (40.1)	99 (35.1)	
Capsular invasion			0.271
Absent	21 (7.4)	28 (9.9)	
Present	120 (42.6)	113 (40.1)	
Maximum tumor diameter in cm			1.000
> 4	44 (15.6)	44 (15.6)	
≤ 4	97 (34.4)	97 (34.4)	
T stage			0.991
T1	17 (6.0)	17 (6.0)	
T2	80 (28.4)	79 (28.0)	
T3	44 (15.6)	45 (16.0)	
Number of metastatic lymph nodes			0.718
Absent	82 (29.1)	79 (28.0)	
Present	59 (20.9)	62 (22.0)	
N stage			0.110
N0	82 (29.1)	79 (28.0)	
N1	40 (14.2)	52 (18.4)	
N2	19 (6.7)	10 (3.5)	
TNM stage			0.099
IA	8 (2.8)	12 (4.3)	
IB	44 (15.6)	48 (17.0)	
IIA	30 (10.6)	19 (6.7)	
IIB	40 (14.2)	52 (18.4)	
III	19 (6.7)	10 (3.5)	
Adjuvant therapy			0.631
Absent	64 (22.7)	60 (21.3)	
Present	77 (27.3)	81 (28.7)	
Preoperative CA19-9 level in U/mL			0.023
> 336.4	47 (16.7)	30 (10.6)	
≤ 336.4	94 (33.3)	111 (39.4)	
Preoperative plasma albumin level in g/L			0.006
> 45.2	32 (11.3)	53 (18.8)	
≤ 45.2	109 (38.2)	88 (31.2)	
Preoperative FAR			< 0.001
> 0.08	114 (40.4)	12 (4.3)	
≤ 0.08	27 (9.6)	129 (45.7)	

FAR: Fibrinogen-to-albumin ratio; TNM: Tumor-Node-Metastasis.

FAR ≤ 0.08, and 126 patients had a preoperative FAR > 0.08, as detailed in [Table 4](#).

Correlations of indicators with clinicopathological factors

As shown in [Table 2](#), all patients could be categorized into low or high value groups

Table 3 Correlation between preoperative plasma albumin level and clinicopathological characteristics in pancreatic ductal adenocarcinoma patients who underwent R0 resection, *n* (%)

Characteristics	Preoperative plasma albumin level		P value
	> 45.2 g/L, <i>n</i> = 85	≤ 45.2 g/L, <i>n</i> = 197	
Age in yr			0.602
> 60	42 (14.9)	104 (36.9)	
≤ 60	43 (15.2)	93 (33.0)	
Sex			0.699
Male	47 (16.7)	104 (36.9)	
Female	38 (13.5)	93 (33.0)	
Clinical symptoms			0.012
Absent	25 (8.9)	32 (11.3)	
Present	60 (21.3)	165 (58.5)	
Diabetes			0.458
Absent	58 (20.6)	143 (50.7)	
Present	27 (9.6)	54 (19.1)	
Smoking status			0.806
Absent	64 (22.7)	151 (53.5)	
Present	21 (7.4)	46 (16.3)	
Alcohol consumption			0.523
Absent	69 (24.5)	166 (58.9)	
Present	16 (5.7)	31 (11.0)	
Family history of cancer			0.832
Absent	82 (29.1)	189 (67.0)	
Present	3 (1.1)	8 (2.8)	
Blood type			0.169
A	33 (11.7)	54 (19.1)	
B	22 (7.8)	71 (25.2)	
AB	8 (2.8)	14 (5.0)	
O	22 (7.8)	58 (20.6)	
Tumor location			< 0.001
Head and neck	24 (8.5)	106 (37.6)	
Body and tail	61 (21.6)	91 (32.3)	
Approaches of open surgery			< 0.001
Pancreaticoduodenectomy	24 (8.5)	106 (37.6)	
Distal pancreatectomy with splenectomy	61 (21.6)	91 (32.3)	
Degree of differentiation			0.567
Well	8 (2.8)	26 (9.2)	
Moderately	66 (23.4)	151 (53.5)	
Poorly	11 (3.9)	20 (7.1)	
Lymphovascular invasion			0.814
Absent	62 (22.0)	141 (50.0)	
Present	23 (8.2)	56 (19.9)	

Perineural invasion			0.741
Absent	20 (7.1)	50 (17.7)	
Present	65 (23.0)	147 (52.1)	
Capsular invasion			0.673
Absent	16 (5.7)	33 (11.7)	
Present	69 (24.5)	164 (58.2)	
Maximum tumor diameter in cm			0.330
> 4	30 (10.6)	58 (20.6)	
≤ 4	55 (19.5)	139 (49.3)	
T stage			0.530
T1	8 (2.8)	26 (9.2)	
T2	47 (16.7)	112 (39.7)	
T3	30 (10.6)	59 (20.9)	
Number of metastatic lymph nodes			0.363
Absent	52 (18.4)	109 (38.7)	
Present	33 (11.7)	88 (31.2)	
N stage			0.127
N0	52 (18.4)	109 (38.7)	
N1	29 (10.3)	63 (22.3)	
N2	4 (1.4)	25 (8.9)	
TNM stage			0.145
IA	4 (1.4)	16 (5.7)	
IB	34 (12.1)	58 (20.6)	
IIA	14 (5.0)	35 (12.4)	
IIB	29 (10.3)	63 (22.3)	
III	4 (1.4)	25 (8.9)	
Adjuvant therapy			0.003
Absent	26 (9.2)	98 (34.8)	
Present	59 (20.9)	99 (35.1)	
Preoperative CA19-9 level in U/mL			0.416
> 336.4	26 (9.2)	51 (18.1)	
≤ 336.4	59 (20.9)	146 (51.8)	
Preoperative plasma fibrinogen concentration in g/L			0.006
> 3.31	32 (11.3)	109 (38.7)	
≤ 3.31	53 (18.8)	88 (31.2)	
Preoperative FAR			< 0.001
> 0.08	15 (5.3)	111 (39.4)	
≤ 0.08	70 (24.8)	86 (30.5)	

FAR: Fibrinogen-to-albumin ratio; TNM: Tumor-Node-Metastasis.

based on the optimal cut-off value of preoperative fibrinogen concentration. The increase in preoperative plasma fibrinogen concentration was significantly correlated with clinical symptoms, tumor location, surgical approaches, preoperative CA19-9 level, preoperative plasma albumin level, and preoperative FAR. However, preoperative fibrinogen concentration did not significantly correlate with age, sex,

Table 4 Correlation between preoperative fibrinogen-to-albumin ratio and clinicopathological characteristics in pancreatic ductal adenocarcinoma patients who underwent R0 resection, *n* (%)

Characteristic	Preoperative FAR		P value
	> 0.08, <i>n</i> = 126	≤ 0.08, <i>n</i> = 156	
Age in yr			0.854
> 60	66 (23.4)	80 (28.4)	
≤ 60	60 (21.3)	76 (27.0)	
Sex			0.724
Male	66 (23.4)	85 (30.1)	
Female	60 (21.3)	71 (25.2)	
Clinical symptoms			0.001
Absent	14 (5.0)	43 (15.2)	
Present	112 (39.7)	113 (40.1)	
Diabetes			0.831
Absent	89 (31.6)	112 (39.7)	
Present	37 (13.1)	44 (15.6)	
Smoking status			0.765
Absent	95 (33.7)	120 (42.6)	
Present	31 (11.0)	36 (12.8)	
Alcohol consumption			0.335
Absent	108 (38.3)	127 (45.0)	
Present	18 (6.4)	29 (10.3)	
Family history of cancer			0.571
Absent	122 (43.3)	149 (52.8)	
Present	4 (1.4)	7 (2.5)	
Blood type			0.817
A	36 (12.8)	51 (18.1)	
B	45 (16.0)	48 (17.0)	
AB	10 (3.5)	12 (4.3)	
O	35 (12.4)	45 (16.0)	
Tumor location			< 0.001
Head and neck	77 (27.3)	53 (18.8)	
Body and tail	49 (17.4)	103 (36.5)	
Approaches of open surgery			< 0.001
Pancreaticoduodenectomy	77 (27.3)	53 (18.8)	
Distal pancreatectomy with splenectomy	49 (17.4)	103 (36.5)	
Degree of differentiation			0.208
Well	20 (7.1)	14 (5.0)	
Moderately	93 (33.0)	124 (44.0)	
Poorly	13 (4.6)	18 (6.4)	
Lymphovascular invasion			0.729
Absent	92 (32.6)	111 (39.4)	
Present	34 (12.1)	45 (16.0)	

Perineural invasion			0.082
Absent	25 (8.9)	45 (16.0)	
Present	101 (35.8)	111 (39.4)	
Capsular invasion			0.360
Absent	19 (6.7)	30 (10.6)	
Present	107 (37.9)	126 (44.7)	
Maximum tumor diameter in cm			0.391
> 4	36 (12.8)	52 (18.4)	
≤ 4	90 (31.9)	104 (36.9)	
T stage			0.462
T1	13 (4.6)	21 (7.4)	
T2	76 (27.0)	83 (29.4)	
T3	37 (13.1)	52 (18.4)	
Number of metastatic lymph nodes			0.988
Absent	72 (25.5)	89 (31.6)	
Present	54 (19.1)	67 (23.8)	
N stage			0.902
N0	72 (25.5)	89 (31.6)	
N1	40 (14.2)	52 (18.4)	
N2	14 (5.0)	15 (5.3)	
TNM stage			0.494
IA	6 (2.1)	14 (5.0)	
IB	40 (14.2)	52 (18.4)	
IIA	26 (9.2)	23 (8.2)	
IIB	40 (14.2)	52 (18.4)	
III	14 (5.0)	15 (5.3)	
Adjuvant therapy			0.531
Absent	58 (20.6)	66 (23.4)	
Present	68 (24.1)	90 (31.9)	
Preoperative CA19-9 level in U/mL			0.132
> 336.4	40 (14.2)	37 (13.1)	
≤ 336.4	86 (30.5)	119 (42.2)	
Preoperative plasma fibrinogen concentration in g/L			< 0.001
> 3.31	114 (40.4)	27 (9.6)	
≤ 3.31	12 (4.3)	129 (45.7)	
Preoperative plasma albumin level in g/L			< 0.001
> 45.2	15 (5.3)	70 (24.8)	
≤ 45.2	111 (39.4)	86 (30.5)	

FAR: Fibrinogen-to-albumin ratio; TNM: Tumor-Node-Metastasis.

blood type, diabetes, smoking status, alcohol consumption, family history of cancer, degree of tumor differentiation, lymphovascular invasion, perineural invasion, capsular invasion, maximum tumor diameter, number of metastatic lymph nodes, T stage, N stage, TNM stage, or adjuvant therapy. The survival curves for preoperative fibrinogen concentrations showed shorter OS times in patients with preoperative

fibrinogen concentrations > 3.31 g/L than in patients with preoperative fibrinogen concentrations ≤ 3.31 g/L (Figure 2A).

As shown in Table 3, all patients could be categorized into a low value group (≤ 45.2 g/L) or a high value group (> 45.2 g/L) based on the optimal cut-off value of preoperative plasma albumin level. The increase in preoperative albumin level was significantly correlated with clinical symptoms ($P = 0.012$), tumor location ($P < 0.001$), surgical approaches ($P < 0.001$), adjuvant therapy ($P = 0.003$), preoperative fibrinogen concentration ($P = 0.006$), and preoperative FAR ($P < 0.001$). The survival curves for preoperative albumin level showed longer OS times in patients with preoperative plasma albumin level > 45.2 g/L than in those with preoperative albumin level ≤ 45.2 g/L (Figure 2B).

As shown in Table 4, according to the optimal cut-off value of preoperative FAR, all patients can be divided into a low-value group (≤ 0.08) or a high-value group (> 0.08). Higher preoperative FAR was significantly associated with clinical symptoms ($P = 0.001$), tumor location ($P < 0.001$), surgical approaches ($P < 0.001$), preoperative plasma fibrinogen concentration ($P < 0.001$), and preoperative plasma albumin level ($P < 0.001$). The survival curves for preoperative FAR showed shorter OS times in patients with FAR > 0.08 than in patients with FAR ≤ 0.08 (Figure 2C).

Univariate analysis and multivariate analysis results

In the univariate Cox analysis (Table 5), age [hazard ratio (HR): 1.358, 95%CI: 1.036-1.780, $P = 0.027$], clinical symptoms (HR: 0.600, 95%CI: 0.424-0.848, $P = 0.004$), degree of tumor differentiation ($P < 0.001$), capsular invasion (HR: 0.609, 95%CI: 0.420-0.885, $P = 0.009$), maximum tumor diameter (HR: 1.403, 95%CI: 1.058-1.862, $P = 0.019$), T stage ($P = 0.035$), number of metastatic lymph nodes (HR: 0.590, 95%CI: 0.449-0.775, $P < 0.001$), N stage ($P = 0.001$), TNM stage ($P = 0.003$), adjuvant therapy (HR: 1.625, 95%CI: 1.244-2.123, $P < 0.001$), preoperative CA19-9 level (HR: 1.971, 95%CI: 1.469-2.644, $P < 0.001$), preoperative plasma fibrinogen concentration (HR: 1.888, 95%CI: 1.438-2.479, $P < 0.001$), preoperative plasma albumin level (HR: 0.650, 95%CI: 0.475-0.890, $P = 0.007$), and preoperative FAR (HR: 2.257, 95%CI: 1.725-2.952, $P < 0.001$) were important prognostic risk factors for OS in patients with PDAC who underwent radical R0 resection.

However, sex, blood type, diabetes, smoking status, alcohol consumption, family history of cancer, surgical approaches, tumor location, lymphovascular invasion, and perineural invasion were not prognostic risk factors for OS in patients with PDAC who underwent radical R0 resection ($P > 0.05$).

In the multivariate Cox regression analysis (Table 6), degree of tumor differentiation ($P < 0.001$), number of metastatic lymph nodes (HR: 0.678, 95%CI: 0.509-0.904, $P = 0.008$), adjuvant therapy (HR: 1.604, 95%CI: 1.214-2.118, $P = 0.001$), preoperative CA19-9 level (HR: 1.740, 95%CI: 1.288-2.352, $P < 0.001$), and preoperative FAR (HR: 2.258, 95%CI: 1.720-2.963, $P < 0.001$) were independent risk factors for poor prognosis in patients with PDAC who underwent radical R0 resection.

DISCUSSION

Our results showed that preoperative FAR was closely related to OS in patients with PDAC after radical R0 resection. To our knowledge, this is the first report of FAR in patients with PDAC who underwent radical R0 resection. A higher preoperative FAR predicted poor prognosis in these patients. Further multivariate analysis showed that preoperative FAR ($P < 0.001$), degree of differentiation ($P < 0.001$), number of metastatic lymph nodes ($P = 0.008$), adjuvant therapy ($P = 0.001$), and preoperative CA19-9 level ($P < 0.001$) were independent prognostic factors for the OS of patients with PDAC after radical R0 resection.

As a newly discovered tumor prognostic marker, the prognostic value of preoperative FAR in patients with malignant tumors undergoing radical surgery is increasing. The prognostic role of FAR has been confirmed in patients who underwent radical resection of tumors, such as esophageal cancer^[19], breast cancer^[20,21] and liver cancer^[22]. It has also been reported that FAR (HR: 1.634; 95%CI: 1.359-1.964; $P < 0.001$) is an important prognostic factor for locally advanced or metastatic pancreatic cancer^[25]. With regard to the optimal cut-off value of FAR, the value in patients who underwent radical operation for esophageal cancer was the same as ours, whereas that in patients who underwent radical operation for liver cancer was 0.062, which was lower than our value. The optimal cut-off value of FAR in patients with locally advanced or metastatic pancreatic cancer was 0.079, which was similar to our value.

Table 5 Univariate analysis for overall survival in pancreatic ductal adenocarcinoma patients who underwent R0 resection

Characteristic	HR (95%CI)	P value
Age in yr	1.358 (1.036-1.780)	0.027
> 60		
≤ 60		
Sex	1.281 (0.979-1.675)	0.071
Male		
Female		
Clinical symptoms	0.600 (0.424-0.848)	0.004
Absent		
Present		
Diabetes	0.903 (0.676-1.206)	0.491
Absent		
Present		
Smoking status	0.866 (0.635-1.181)	0.363
Absent		
Present		
Alcohol consumption	1.083 (0.754-1.556)	0.667
Absent		
Present		
Family history of cancer	1.251 (0.617-2.537)	0.535
Absent		
Present		
Blood type	—	0.579
A		
B		
AB		
O		
Tumor location	0.954 (0.729-1.249)	0.731
Head and neck		
Body and tail		
Approaches of open surgery	0.954 (0.729-1.249)	0.731
Pancreaticoduodenectomy		
Distal pancreatectomy with splenectomy		
Degree of differentiation	—	< 0.001
Well		
Moderately		
Poorly		
Lymphovascular invasion	0.793 (0.590-1.065)	0.123
Absent		
Present		
Perineural invasion	0.905 (0.666-1.231)	0.525
Absent		

Present		
Capsular invasion	0.609 (0.420-0.885)	0.009
Absent		
Present		
Maximum tumor diameter in cm	1.403 (1.058-1.862)	0.019
> 4		
≤ 4		
T stage	—	0.035
T1		
T2		
T3		
Number of metastatic lymph nodes	0.590 (0.449-0.775)	< 0.001
Absent		
Present		
N stage		0.001
N0		
N1		
N2		
TNM stage		0.003
IA		
IB		
IIA		
IIB		
III		
Adjuvant therapy	1.625 (1.244-2.123)	< 0.001
Absent		
Present		
Preoperative CA19-9 level in U/mL	1.971 (1.469-2.644)	< 0.001
> 336.4		
≤ 336.4		
Preoperative plasma fibrinogen concentration in g/L	1.888 (1.438-2.479)	< 0.001
> 3.31		
≤ 3.31		
Preoperative plasma albumin level in g/L	0.650 (0.475-0.890)	0.007
> 45.2		
≤ 45.2		
Preoperative FAR	2.257 (1.725-2.952)	< 0.001
> 0.08		
≤ 0.08		

CI: Confidence interval; FAR: Fibrinogen-to-albumin ratio; HR: Hazard ratio.

However, the reported optimal cut-off value of preoperative FAR in patients who underwent radical mastectomy was between 0.071 and 0.084, indicating that the optimal cut-off value may be different even in different patient groups with the same

Table 6 Multivariate analysis for overall survival in pancreatic ductal adenocarcinoma patients who underwent R0 resection

Characteristics	HR (95%CI)	Wald	P value
Age in yr	1.289 (0.971-1.710)	3.076	0.079
> 60			
≤ 60			
Degree of differentiation		31.261	< 0.001
Poorly/well	5.209 (2.837-9.562)	28.353	< 0.001
Moderately/well	1.912 (1.184-3.085)	7.037	0.008
Capsular invasion	0.697 (0.475-1.022)	3.409	0.065
Absent			
Present			
Maximum tumor diameter in cm	1.296 (0.959-1.751)	2.843	0.092
> 4			
≤ 4			
Number of metastatic lymph nodes	0.678 (0.509-0.904)	7,027	0.008
Absent			
Present			
Adjuvant therapy	1.604 (1.214-2.118)	11.058	0.001
Absent			
Present			
Preoperative CA19-9 level in U/mL	1.740 (1.288-2.352)	13.003	< 0.001
> 336.4			
≤ 336.4			
Preoperative FAR	2.258 (1.720-2.963)	34.468	< 0.001
> 0.08			
≤ 0.08			

CI: Confidence interval; FAR: Fibrinogen-to-albumin ratio; HR: Hazard ratio.

tumor type. The reasons for the above differences may be related to the different biological behaviors of different tumors or the selection bias of different patient groups with the same tumor type, so more basic and clinical studies are needed to verify this. Although preoperative FAR has a clear role in evaluating the prognosis of patients undergoing radical resection of malignant tumors^[19-22], the molecular mechanisms related to the occurrence and development of tumors are still not completely clear.

Fibrinogen is a soluble glycoprotein with a relative molecular mass of 340 kDa that is composed of three different polypeptide chains, namely α , β , and γ . Normally, fibrinogen is synthesized by the liver and released into the bloodstream^[26], where it plays an important role in both the inflammatory response and blood coagulation.

Inflammation is an important marker of cancer^[14], and numerous clinical and experimental studies have convincingly supported the notion that inflammation is an important component of tumor progression^[12,13]. The link between colitis and colon cancer has been fully confirmed, and researchers have directly tested the hypothesis of a link between fibrinogen and colitis-associated colon cancer in mice through animal experiments^[27]. Preoperative hyperfibrinogenemia has been reported to be significantly associated with shorter OS (HR: 3.138, 95%CI: 1.077-9.139, $P = 0.036$) in patients with nonmetastatic colon cancer^[28]. Hyperfibrinogenemia is associated with systemic inflammation and can predict poor prognosis in advanced pancreatic cancer (HR: 2.184, 95%CI: 1.574-3.032, $P < 0.001$)^[29]. It has also been reported that fibrinogen concentration is positively correlated with the stage of pancreatic cancer, and the increase in plasma fibrinogen concentration before surgery may be a useful indicator

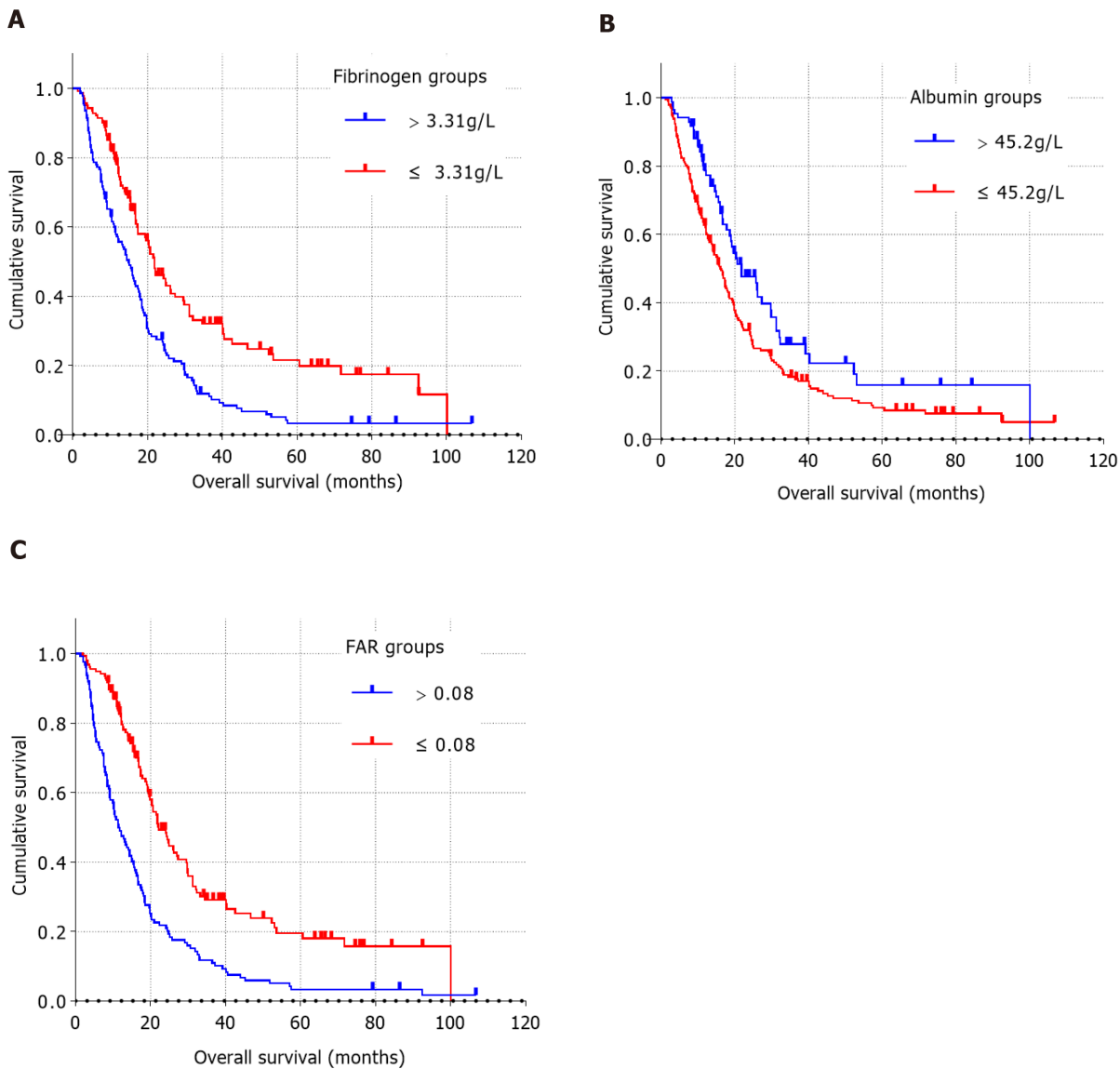


Figure 2 Kaplan-Meier curves were generated by grouping preoperative fibrinogen concentration, albumin level, and fibrinogen-to-albumin ratio using the optimal cut-off values. A: In the comparison of preoperative fibrinogen concentration > 3.31 g/L with preoperative fibrinogen concentration \leq 3.31 g/L ($P < 0.05$), the blue line represents the > 3.31 g/L group and the red line represents the \leq 3.31 g/L group; B: In the comparison of preoperative albumin level > 45.2 g/L and preoperative albumin level \leq 45.2 g/L ($P < 0.05$), the blue line represents the > 45.2 g/L group and the red line represents the \leq 45.2 g/L group; C: In the comparison of preoperative fibrinogen-to-albumin ratio (FAR) > 0.08 with preoperative FAR \leq 0.08 ($P < 0.05$), the blue line represents the FAR > 0.08 group and the red line represents the FAR \leq 0.08 group.

for predicting the distant metastasis of pancreatic cancer (distant metastasis group vs no distant metastasis group: 4.41 ± 0.84 g/L vs 3.76 ± 1.04 g/L, $P < 0.01$)^[30]. Survival analyses reported in the literature show that plasma fibrinogen concentration is an independent prognostic factor for operable patients with non-small cell lung cancer. Patients with high fibrinogen concentrations (fibrinogenemia) had a higher risk of disease progression (HR: 1.49, 95%CI: 1.07-2.05, $P < 0.05$) and death (HR: 1.64, 95%CI: 1.06-2.53, $P < 0.05$) than those with normal fibrinogen concentrations^[31]. In a large-scale observation study of 2563 patients with nonmetastatic primary nasopharyngeal carcinoma, a combined increase in Epstein-Barr virus deoxyribonucleic acid copy number and fibrinogen concentration was found to be significantly associated with reduced disease-free survival (HR: 8.51, 95%CI: 5.34-13.56, $P < 0.001$) and OS (HR 12.77, 95%CI: 5.08-32.12, $P < 0.001$)^[32]. Thus, elevated plasma fibrinogen concentrations before treatment were associated with a significant reduction in the survival of patients with solid tumors, which also suggests that clinical trials are needed to determine whether plasma fibrinogen can be included in the cancer staging system and whether reducing the concentration of plasma fibrinogen has a beneficial effect on disease recurrence and mortality^[33].

Pancreatic cancer has also been found to cause hypercoagulability, which may lead

to significant thromboembolism in patients with pancreatic cancer, with a reported prevalence of venous thromboembolism of 12%-36%^[34,35]. Fibrinogen not only plays a key role in hemostasis but also plays an important role in tumor biology. Fibrin deposition provides a temporary medium-like matrix rich in growth factors that promote the growth of cancer cells. The importance of fibrinogen in tumor biology has been demonstrated in studies of fibrinogen-deficient mice^[36]. Studies have shown that fibrinogen can promote platelet adhesion to tumor cells; at the same time, platelets promote the accumulation of more fibrinogen around tumor cells by forming thrombin, and these components cooperate with each other to protect tumor cells from natural killer cells^[37]. Fibrinogen can be cleaved by fibrinolytic enzymes, and its protein hydrolysate can promote angiogenesis, which is the premise of tumor growth and metastasis^[38]. Fibrinogen has the ability to bind directly to vascular endothelial growth factor (VEGF), platelet-derived growth factor, fibroblast growth factor family members, and transforming growth factor- β , which also reflects the important role fibrinogen plays in angiogenesis, tumor cell proliferation, the hematogenous metastasis of malignant tumors, and epithelial-mesenchymal transformation^[39-41]. By inducing epithelial-mesenchymal transformation, fibrinogen promotes the migration of tumor cells and enhances the invasion and metastasis of tumor cells^[42].

In cancer patients, the diagnosis of malnutrition is very common and has a very negative impact on prognosis^[43]. Progressive malnutrition is closely related to the occurrence and development of cachexia, especially in patients with pancreatic cancer and gastric cancer^[43]. Epidemiological studies on the relationship between the level of plasma albumin and the survival of cancer patients have found that the decrease in plasma albumin level is associated with reduced survival in patients^[43]. The relationship between pretreatment plasma albumin level and prognosis has been reported in head and neck cancer^[44], non-small cell lung cancer^[45], kidney cancer^[46], gastric cardia adenocarcinoma^[47], and ovarian cancer^[48]. Inflammation is known to play a critical role in the development, progression, and prognosis of colorectal tumors, and plasma albumin concentration has been shown to be a valuable prognostic factor for colorectal tumors^[49]. Tumor cells produce and release proinflammatory cytokines (interleukin (IL)-1, IL-6, tumor necrosis factor- α , interferon- γ) and hormones that are associated with the pathogenesis of both malnutrition and cachexia^[43,50], and these inflammatory cytokines can interfere with the normal synthesis of albumin in the liver^[46]. Among them, IL-6 has been shown to regulate the secretion of VEGF in glioblastoma cells, while VEGF can lead to an increase in vascular permeability, which indirectly leads to a decrease in plasma albumin level^[51].

Therefore, preoperative FAR, as an indicator that reflects the ratio between the fibrinogen concentration and albumin level, can be considered a risk factor for the prognosis of patients undergoing radical R0 resection of PDAC.

This study has some limitations. First, this study is a single-center, retrospective study with a small sample, which may have selection bias. In the future, it is necessary to design more multicenter, prospective studies with a large sample to verify the current conclusions. Second, due to the relatively small number of patients, we did not divide the patients into a training group and test group for statistical verification, and there was a lack of external verification, which needs further study. In our study, we focused on the prognostic significance of preoperative FAR, while the relationship between the change in FAR after surgery and the prognosis of these patients was not been studied. In addition, many patients received multiple treatments due to tumor recurrence during the follow-up period, which also affected OS.

CONCLUSION

In conclusion, in this first report of preoperative FAR in PDAC, we have found that preoperative FAR, defined as the ratio of the fibrinogen concentration to the albumin level, is a useful indicator for assessing the prognosis of patients undergoing radical R0 resection of PDAC. Its practicability, convenience, and low cost make FAR a promising serum biomarker for predicting the prognosis of patients with PDAC. It may provide important help in treatment decision-making for patients with resectable PDAC in the future. However, more relevant studies are needed to validate further the relevant conclusions.

ARTICLE HIGHLIGHTS

Research background

Pancreatic cancer has the worst prognosis of all the malignancies, with only 20% of pancreatic cancer patients having access to surgical treatment. The poor prognosis of pancreatic cancer patients is related to the early asymptomatic nature of the disease, leading to the late stage of disease diagnosis and the high possibility of distant metastasis in the early stage of pancreatic cancer. Inflammation plays an important role in tumor progression, and growing evidence has confirmed that the fibrinogen-to-albumin ratio (FAR) is an important prognostic factor for overall survival (OS) in malignant tumors.

Research motivation

We speculate that FAR, as an easily available, cost-effective, and noninvasive prognostic indicator for pancreatic cancer patients, could help to select and identify pancreatic cancer patients suitable for surgical resection. This will benefit pancreatic cancer patients.

Research objectives

The main objective of our study was to investigate the prognostic significance of FAR in pancreatic ductal adenocarcinoma (PDAC) patients undergoing radical R0 resection.

Research methods

A total of 282 PDAC patients undergoing radical R0 resection were included in this retrospective study. We used the `surv_cutpoint` function and receiver operating characteristic curves to determine the optimal cut-off values for preoperative fibrinogen, albumin, and FAR. We analyzed the patients' clinicopathological data, the Kaplan-Meier method and log-rank tests were used for univariate survival analysis, and a Cox regression model was used for multivariate survival analysis for these patients.

Research results

The optimal cut-off value of FAR was 0.08 in our study. Higher preoperative FAR was significantly correlated with clinical symptoms, tumor location, surgical approaches, preoperative plasma fibrinogen concentration, and preoperative plasma albumin level (all $P < 0.05$). Multivariate analysis showed that preoperative FAR (HR: 2.258, 95%CI: 1.720-2.963, $P < 0.001$) was an independent prognostic factor in PDAC patients undergoing radical R0 resection.

Research conclusions

Preoperative FAR, as an indicator that reflects the ratio between the fibrinogen concentration and albumin level, is an important predictor of the OS in PDAC patients undergoing radical R0 resection. A higher preoperative FAR predicted poor prognosis in these patients.

Research perspectives

In the future, it is necessary to design more multicenter, prospective studies with a large sample to verify the current conclusions. Additionally, more basic experiments exploring the potential mechanisms are necessary.

REFERENCES

- 1 Siegel RL, Miller KD, Jemal A. Cancer statistics, 2019. *CA Cancer J Clin* 2019; **69**: 7-34 [PMID: 30620402 DOI: 10.3322/caac.21551]
- 2 Chen W, Zheng R, Baade PD, Zhang S, Zeng H, Bray F, Jemal A, Yu XQ, He J. Cancer statistics in China, 2015. *CA Cancer J Clin* 2016; **66**: 115-132 [PMID: 26808342 DOI: 10.3322/caac.21338]
- 3 Bray F, Ferlay J, Soerjomataram I, Siegel RL, Torre LA, Jemal A. Global cancer statistics 2018: GLOBOCAN estimates of incidence and mortality worldwide for 36 cancers in 185 countries. *CA Cancer J Clin* 2018; **68**: 394-424 [PMID: 30207593 DOI: 10.3322/caac.21492]
- 4 Rahib L, Smith BD, Aizenberg R, Rosenzweig AB, Fleshman JM, Matrisian LM. Projecting cancer incidence and deaths to 2030: the unexpected burden of thyroid, liver, and pancreas cancers in the United States. *Cancer Res* 2014; **74**: 2913-2921 [PMID: 24840647 DOI: 10.1158/0008-5472.CAN-14-0155]

- 5 **Howlader N**, Noone AM, Krapcho M, Miller D, Brest A, Yu M, Ruhl J, Tatalovich Z, Mariotto A, Lewis DR, Chen HS, Feuer EJ, Cronin KA. SEER Cancer Statistics Review, 1975-2017, National Cancer Institute, based on November 2019 SEER data submission, posted to the SEER web site, April 2020, cited 2020-09-20. Available from: https://seer.cancer.gov/csr/1975_2017/
- 6 **Grossberg AJ**, Chu LC, Deig CR, Fishman EK, Hwang WL, Maitra A, Marks DL, Mehta A, Nabavizadeh N, Simeone DM, Weekes CD, Thomas CR Jr. Multidisciplinary standards of care and recent progress in pancreatic ductal adenocarcinoma. *CA Cancer J Clin* 2020 [PMID: 32683683 DOI: 10.3322/caac.21626]
- 7 **Kamisawa T**, Wood LD, Itoi T, Takaori K. Pancreatic cancer. *Lancet* 2016; **388**: 73-85 [PMID: 26830752 DOI: 10.1016/S0140-6736(16)00141-0]
- 8 **Kulemann B**, Hoepfner J, Wittel U, Glatz T, Keck T, Wellner UF, Bronsert P, Sick O, Hopt UT, Makowiec F, Riediger H. Perioperative and long-term outcome after standard pancreaticoduodenectomy, additional portal vein and multivisceral resection for pancreatic head cancer. *J Gastrointest Surg* 2015; **19**: 438-444 [PMID: 25567663 DOI: 10.1007/s11605-014-2725-8]
- 9 **Hoem D**, Viste A. Improving survival following surgery for pancreatic ductal adenocarcinoma--a ten-year experience. *Eur J Surg Oncol* 2012; **38**: 245-251 [PMID: 22217907 DOI: 10.1016/j.ejso.2011.12.010]
- 10 **Gillen S**, Schuster T, Meyer Zum Büschenfelde C, Friess H, Kleeff J. Preoperative/neoadjuvant therapy in pancreatic cancer: a systematic review and meta-analysis of response and resection percentages. *PLoS Med* 2010; **7**: e1000267 [PMID: 20422030 DOI: 10.1371/journal.pmed.1000267]
- 11 **Groot VP**, Gemenetis G, Blair AB, Rivero-Soto RJ, Yu J, Javed AA, Burkhart RA, Rinkes IHMB, Molenaar IQ, Cameron JL, Weiss MJ, Wolfgang CL, He J. Defining and Predicting Early Recurrence in 957 Patients With Resected Pancreatic Ductal Adenocarcinoma. *Ann Surg* 2019; **269**: 1154-1162 [PMID: 31082915 DOI: 10.1097/SLA.0000000000002734]
- 12 **Grivennikov SI**, Greten FR, Karin M. Immunity, inflammation, and cancer. *Cell* 2010; **140**: 883-899 [PMID: 20303878 DOI: 10.1016/j.cell.2010.01.025]
- 13 **Coussens LM**, Werb Z. Inflammation and cancer. *Nature* 2002; **420**: 860-867 [PMID: 12490959 DOI: 10.1038/nature01322]
- 14 **Mantovani A**. Cancer: Inflaming metastasis. *Nature* 2009; **457**: 36-37 [PMID: 19122629 DOI: 10.1038/457036b]
- 15 **Campello E**, Ilich A, Simioni P, Key NS. The relationship between pancreatic cancer and hypercoagulability: a comprehensive review on epidemiological and biological issues. *Br J Cancer* 2019; **121**: 359-371 [PMID: 31327867 DOI: 10.1038/s41416-019-0510-x]
- 16 **Mantovani A**, Allavena P, Sica A, Balkwill F. Cancer-related inflammation. *Nature* 2008; **454**: 436-444 [PMID: 18650914 DOI: 10.1038/nature07205]
- 17 **Virizueta JA**, Cambolor-Álvarez M, Luengo-Pérez LM, Grande E, Álvarez-Hernández J, Sendrós-Madroño MJ, Jiménez-Fonseca P, Cervera-Peris M, Ocón-Bretón MJ. Nutritional support and parenteral nutrition in cancer patients: an expert consensus report. *Clin Transl Oncol* 2018; **20**: 619-629 [PMID: 29043569 DOI: 10.1007/s12094-017-1757-4]
- 18 **Gupta D**, Lis CG. Pretreatment serum albumin as a predictor of cancer survival: a systematic review of the epidemiological literature. *Nutr J* 2010; **9**: 69 [PMID: 21176210 DOI: 10.1186/1475-2891-9-69]
- 19 **Tan Z**, Zhang M, Han Q, Wen J, Luo K, Lin P, Zhang L, Yang H, Fu J. A novel blood tool of cancer prognosis in esophageal squamous cell carcinoma: the Fibrinogen/Albumin Ratio. *J Cancer* 2017; **8**: 1025-1029 [PMID: 28529615 DOI: 10.7150/jca.16491]
- 20 **Hwang KT**, Chung JK, Roh EY, Kim J, Oh S, Kim YA, Rhu J, Kim S. Prognostic Influence of Preoperative Fibrinogen to Albumin Ratio for Breast Cancer. *J Breast Cancer* 2017; **20**: 254-263 [PMID: 28970851 DOI: 10.4048/jbc.2017.20.3.254]
- 21 **Zheng Y**, Wu C, Yan H, Chen S. Prognostic value of combined preoperative fibrinogen-albumin ratio and platelet-lymphocyte ratio score in patients with breast cancer: A prognostic nomogram study. *Clin Chim Acta* 2020; **506**: 110-121 [PMID: 32156604 DOI: 10.1016/j.cca.2020.03.011]
- 22 **Xu Q**, Yan Y, Gu S, Mao K, Zhang J, Huang P, Zhou Z, Chen Z, Zheng S, Liang J, Lin Z, Wang J, Yan J, Xiao Z. A Novel Inflammation-Based Prognostic Score: The Fibrinogen/Albumin Ratio Predicts Prognoses of Patients after Curative Resection for Hepatocellular Carcinoma. *J Immunol Res* 2018; **2018**: 4925498 [PMID: 30027102 DOI: 10.1155/2018/4925498]
- 23 **Bockhorn M**, Uzunoglu FG, Adham M, Imrie C, Milicevic M, Sandberg AA, Asbun HJ, Bassi C, Büchler M, Charnley RM, Conlon K, Cruz LF, Dervenis C, Fingerhuth A, Friess H, Gouma DJ, Hartwig W, Lillemo K, Montorsi M, Neoptolemos JP, Shrikhande SV, Takaori K, Traverso W, Vashist YK, Vollmer C, Yeo CJ, Izbicki JR; International Study Group of Pancreatic Surgery. Borderline resectable pancreatic cancer: a consensus statement by the International Study Group of Pancreatic Surgery (ISGPS). *Surgery* 2014; **155**: 977-988 [PMID: 24856119 DOI: 10.1016/j.surg.2014.02.001]
- 24 **Chun YS**, Pawlik TM, Vauthey JN. 8th Edition of the AJCC Cancer Staging Manual: Pancreas and Hepatobiliary Cancers. *Ann Surg Oncol* 2018; **25**: 845-847 [PMID: 28752469 DOI: 10.1245/s10434-017-6025-x]
- 25 **Fang L**, Yan FH, Liu C, Chen J, Wang D, Zhang CH, Lou CJ, Lian J, Yao Y, Wang BJ, Li RY, Han SL, Bai YB, Yang JN, Li ZW, Zhang YQ. Systemic Inflammatory Biomarkers, Especially Fibrinogen to Albumin Ratio, Predict Prognosis in Patients with Pancreatic Cancer. *Cancer Res Treat* 2020; Online ahead of print [PMID: 32854494 DOI: 10.4143/crt.2020.330]

- 26 **Adams RA**, Schachtrup C, Davalos D, Tsigelny I, Akassoglou K. Fibrinogen signal transduction as a mediator and therapeutic target in inflammation: lessons from multiple sclerosis. *Curr Med Chem* 2007; **14**: 2925-2936 [PMID: 18045138 DOI: 10.2174/092986707782360015]
- 27 **Steinbrecher KA**, Horowitz NA, Blevins EA, Barney KA, Shaw MA, Harmel-Laws E, Finkelman FD, Flick MJ, Pinkerton MD, Talmage KE, Kombrinck KW, Witte DP, Palumbo JS. Colitis-associated cancer is dependent on the interplay between the hemostatic and inflammatory systems and supported by integrin alpha(M)beta(2) engagement of fibrinogen. *Cancer Res* 2010; **70**: 2634-2643 [PMID: 20233870 DOI: 10.1158/0008-5472.CAN-09-3465]
- 28 **Son HJ**, Park JW, Chang HJ, Kim DY, Kim BC, Kim SY, Park SC, Choi HS, Oh JH. Preoperative plasma hyperfibrinogenemia is predictive of poor prognosis in patients with nonmetastatic colon cancer. *Ann Surg Oncol* 2013; **20**: 2908-2913 [PMID: 23612884 DOI: 10.1245/s10434-013-2968-8]
- 29 **Qi Q**, Geng Y, Sun M, Chen H, Wang P, Chen Z. Hyperfibrinogen Is Associated With the Systemic Inflammatory Response and Predicts Poor Prognosis in Advanced Pancreatic Cancer. *Pancreas* 2015; **44**: 977-982 [PMID: 25931258 DOI: 10.1097/MPA.0000000000000353]
- 30 **Guo Q**, Zhang B, Dong X, Xie Q, Guo E, Huang H, Wu Y. Elevated levels of plasma fibrinogen in patients with pancreatic cancer: possible role of a distant metastasis predictor. *Pancreas* 2009; **38**: e75-e79 [PMID: 19276866 DOI: 10.1097/MPA.0b013e3181987d86]
- 31 **Sheng L**, Luo M, Sun X, Lin N, Mao W, Su D. Serum fibrinogen is an independent prognostic factor in operable nonsmall cell lung cancer. *Int J Cancer* 2013; **133**: 2720-2725 [PMID: 23716344 DOI: 10.1002/ijc.28284]
- 32 **Tang LQ**, Chen QY, Guo SS, Chen WH, Li CF, Zhang L, Lai XP, He Y, Xu YX, Hu DP, Wen SH, Peng YT, Liu H, Liu LT, Yan SM, Guo L, Zhao C, Cao KJ, Liu Q, Qian CN, Ma J, Guo X, Zeng MS, Mai HQ. The impact of plasma Epstein-Barr virus DNA and fibrinogen on nasopharyngeal carcinoma prognosis: an observational study. *Br J Cancer* 2014; **111**: 1102-1111 [PMID: 25051405 DOI: 10.1038/bjc.2014.393]
- 33 **Perisanidis C**, Psyri A, Cohen EE, Engelmann J, Heinze G, Perisanidis B, Stift A, Filipits M, Kornek G, Nkenke E. Prognostic role of pretreatment plasma fibrinogen in patients with solid tumors: A systematic review and meta-analysis. *Cancer Treat Rev* 2015; **41**: 960-970 [PMID: 26604093 DOI: 10.1016/j.ctrv.2015.10.002]
- 34 **Ishigaki K**, Nakai Y, Isayama H, Saito K, Hamada T, Takahara N, Mizuno S, Mohri D, Kogure H, Matsubara S, Yamamoto N, Tada M, Koike K. Thromboembolisms in Advanced Pancreatic Cancer: A Retrospective Analysis of 475 Patients. *Pancreas* 2017; **46**: 1069-1075 [PMID: 28787333 DOI: 10.1097/MPA.0000000000000889]
- 35 **Epstein AS**, Soff GA, Capanu M, Crosbie C, Shah MA, Kelsen DP, Denton B, Gardos S, O'Reilly EM. Analysis of incidence and clinical outcomes in patients with thromboembolic events and invasive exocrine pancreatic cancer. *Cancer* 2012; **118**: 3053-3061 [PMID: 21989534 DOI: 10.1002/cncr.26600]
- 36 **Palumbo JS**, Potter JM, Kaplan LS, Talmage K, Jackson DG, Degen JL. Spontaneous hematogenous and lymphatic metastasis, but not primary tumor growth or angiogenesis, is diminished in fibrinogen-deficient mice. *Cancer Res* 2002; **62**: 6966-6972 [PMID: 12460914]
- 37 **Zheng S**, Shen J, Jiao Y, Liu Y, Zhang C, Wei M, Hao S, Zeng X. Platelets and fibrinogen facilitate each other in protecting tumor cells from natural killer cytotoxicity. *Cancer Sci* 2009; **100**: 859-865 [PMID: 19302289 DOI: 10.1111/j.1349-7006.2009.01115.x]
- 38 **Zhao C**, Su Y, Zhang J, Feng Q, Qu L, Wang L, Liu C, Jiang B, Meng L, Shou C. Fibrinogen-derived fibrinostatin inhibits tumor growth through anti-angiogenesis. *Cancer Sci* 2015; **106**: 1596-1606 [PMID: 26300396 DOI: 10.1111/cas.12797]
- 39 **Staton CA**, Brown NJ, Lewis CE. The role of fibrinogen and related fragments in tumour angiogenesis and metastasis. *Expert Opin Biol Ther* 2003; **3**: 1105-1120 [PMID: 14519075 DOI: 10.1517/14712598.3.7.1105]
- 40 **Witsch E**, Sela M, Yarden Y. Roles for growth factors in cancer progression. *Physiology (Bethesda)* 2010; **25**: 85-101 [PMID: 20430953 DOI: 10.1152/physiol.00045.2009]
- 41 **Martino MM**, Briquez PS, Ranga A, Lutolf MP, Hubbell JA. Heparin-binding domain of fibrin(ogen) binds growth factors and promotes tissue repair when incorporated within a synthetic matrix. *Proc Natl Acad Sci USA* 2013; **110**: 4563-4568 [PMID: 23487783 DOI: 10.1073/pnas.1221602110]
- 42 **Shu YJ**, Weng H, Bao RF, Wu XS, Ding Q, Cao Y, Wang XA, Zhang F, Xiang SS, Li HF, Li ML, Mu JS, Wu WG, Liu YB. Clinical and prognostic significance of preoperative plasma hyperfibrinogenemia in gallbladder cancer patients following surgical resection: a retrospective and *in vitro* study. *BMC Cancer* 2014; **14**: 566 [PMID: 25096189 DOI: 10.1186/1471-2407-14-566]
- 43 **Sadeghi M**, Keshavarz-Fathi M, Baracos V, Arends J, Mahmoudi M, Rezaei N. Cancer cachexia: Diagnosis, assessment, and treatment. *Crit Rev Oncol Hematol* 2018; **127**: 91-104 [PMID: 29891116 DOI: 10.1016/j.critrevonc.2018.05.006]
- 44 **Danan D**, Shonka DC Jr, Selman Y, Chow Z, Smolkin ME, Jameson MJ. Prognostic value of albumin in patients with head and neck cancer. *Laryngoscope* 2016; **126**: 1567-1571 [PMID: 26864349 DOI: 10.1002/lary.25877]
- 45 **Espinosa E**, Feliu J, Zamora P, González Barón M, Sánchez JJ, Ordón ez A, Espinosa J. Serum albumin and other prognostic factors related to response and survival in patients with advanced non-small cell lung cancer. *Lung Cancer* 1995; **12**: 67-76 [PMID: 7600032 DOI: 10.1016/0169-5002(95)00407-R]

- 46 **Chen Z**, Shao Y, Wang K, Cao W, Xiong Y, Wu R, Luo S, Xu X, He X. Prognostic role of pretreatment serum albumin in renal cell carcinoma: a systematic review and meta-analysis. *Oncotargets Ther* 2016; **9**: 6701-6710 [PMID: [27822073](#) DOI: [10.2147/OTT.S108469](#)]
- 47 **Lien YC**, Hsieh CC, Wu YC, Hsu HS, Hsu WH, Wang LS, Huang MH, Huang BS. Preoperative serum albumin level is a prognostic indicator for adenocarcinoma of the gastric cardia. *J Gastrointest Surg* 2004; **8**: 1041-1048 [PMID: [15585392](#) DOI: [10.1016/j.gassur.2004.09.033](#)]
- 48 **Asher V**, Lee J, Bali A. Preoperative serum albumin is an independent prognostic predictor of survival in ovarian cancer. *Med Oncol* 2012; **29**: 2005-2009 [PMID: [21735143](#) DOI: [10.1007/s12032-011-0019-5](#)]
- 49 **González-Trejo S**, Carrillo JF, Carmona-Herrera DD, Baz-Gutiérrez P, Herrera-Goepfert R, Núñez G, Ochoa-Carrillo FJ, Gallardo-Rincón D, Aiello-Crocifoglio V, Oñate-Ocaña LF. Baseline serum albumin and other common clinical markers are prognostic factors in colorectal carcinoma: A retrospective cohort study. *Medicine (Baltimore)* 2017; **96**: e6610 [PMID: [28403106](#) DOI: [10.1097/MD.0000000000006610](#)]
- 50 **Van Cutsem E**, Arends J. The causes and consequences of cancer-associated malnutrition. *Eur J Oncol Nurs* 2005; **9** Suppl 2: S51-S63 [PMID: [16437758](#) DOI: [10.1016/j.ejon.2005.09.007](#)]
- 51 **Loeffler S**, Fayard B, Weis J, Weissenberger J. Interleukin-6 induces transcriptional activation of vascular endothelial growth factor (VEGF) in astrocytes *in vivo* and regulates VEGF promoter activity in glioblastoma cells *via* direct interaction between STAT3 and Sp1. *Int J Cancer* 2005; **115**: 202-213 [PMID: [15688401](#) DOI: [10.1002/ijc.20871](#)]



Published by **Baishideng Publishing Group Inc**
7041 Koll Center Parkway, Suite 160, Pleasanton, CA 94566, USA

Telephone: +1-925-3991568

E-mail: bpgoffice@wjgnet.com

Help Desk: <https://www.f6publishing.com/helpdesk>

<https://www.wjgnet.com>

