

Early initiation of prophylactic anticoagulation for prevention of COVID-19 mortality: a nationwide cohort study of hospitalized patients in the United States

Christopher T Rentsch, PhD^{1,2*&}; Joshua A Beckman, MD^{3*}; Laurie Tomlinson, PhD¹; Walid F Gellad, MD^{4,5,6}; Charles Alcorn, BS⁷; Farah Kidwai-Khan, MS^{2,8}; Melissa Skanderson, MSW²; Evan Brittain, MD⁹; Joseph T King, Jr, MD, MSCE^{2,10}; Yuk-Lam Ho, MPH¹¹; Svetlana Eden, PhD¹²; Suman Kundu, DSc¹³; Michael F Lann, MS⁷; Robert A Greevy, Jr, PhD¹⁴; P. Michael Ho, MD, PhD¹⁵; Paul A Heidenreich, MD^{16,17}; Daniel A Jacobson, PhD¹⁸; Ian J Douglas, PhD¹; Janet P Tate, ScD^{2,8}; Stephen JW Evans, MSc¹; David Atkins, MD¹⁹; Amy C Justice, MD, PhD^{2,8,20†}; Matthew S Freiberg, MD^{13,21†}

**These authors contributed equally to this work; †Joint principal investigators*

&corresponding: christopher.rentsch@lshtm.ac.uk; @DarthCTR

1. Faculty of Epidemiology and Population Health, London School of Hygiene & Tropical Medicine, London, UK, WC1E 7HT
2. VA Connecticut Healthcare System, US Department of Veterans Affairs, West Haven, CT, 06516
3. Cardiovascular Division, Vanderbilt University Medical Center and Vanderbilt Translational and Clinical Cardiovascular Research Center, Nashville, TN, 37232
4. Center for Pharmaceutical Policy and Prescribing, Health Policy Institute, University of Pittsburgh, Pittsburgh, PA, 15261
5. Division of General Internal Medicine, School of Medicine, University of Pittsburgh, Pittsburgh, PA, 15213
6. Veterans Affairs Pittsburgh Healthcare System, US Department of Veterans Affairs, Pittsburgh, PA, 15240
7. Center for Occupational Biostatistics and Epidemiology, Department of Biostatistics, Graduate School of Public Health, University of Pittsburgh, Pittsburgh, PA, 15260
8. Department of Internal Medicine, Yale School of Medicine, New Haven, CT, 06510
9. Department of Medicine, Vanderbilt University Medical Center and Vanderbilt Translational and Clinical Cardiovascular Research Center, Nashville, TN, 37232
10. Department of Neurosurgery, Yale School of Medicine, New Haven, CT, 06510
11. Massachusetts Veterans Epidemiology Research and Information Center (MAVERIC), VA Boston Healthcare System, Boston, MA
12. Faculty of Biostatistics, Department of Biostatistics, Vanderbilt University School of Medicine, Nashville, TN, 37212
13. Department of Medicine, Vanderbilt University Medical Center, Nashville, TN, 37232
14. Department of Biostatistics, Vanderbilt University Medical Center, Nashville, TN, 37232
15. Rocky Mountain Regional VA Medical Center, US Department of Veterans Affairs, Aurora, CO, 80045
16. VA Palo Alto Healthcare System, US Department of Veterans Affairs, Palo Alto, CA 94304
17. Department of Medicine, Stanford University School of Medicine, Stanford, CA 94304
18. Oak Ridge National Laboratory, Biosciences Division, Oak Ridge, TN, 37831
19. Health Services Research and Development, US Department of Veterans Affairs, Washington, DC, 20420
20. Center for Interdisciplinary Research on AIDS, Yale School of Public Health, New Haven, CT, 06510
21. Geriatric Research Education and Clinical Center, Tennessee Valley Healthcare System, US Department of Veterans Affairs, Nashville, TN, 37212

Abstract

Importance. Deaths among patients with coronavirus disease 2019 (COVID-19) are partially attributed to venous thromboembolism and arterial thromboses. Anticoagulants prevent thrombosis formation, possess anti-inflammatory and anti-viral properties, and may be particularly effective for treating patients with COVID-19.

Objective. To evaluate whether initiation of prophylactic anticoagulation within 24 hours of admission is associated with decreased risk of death among patients hospitalized with COVID-19.

Design. Observational cohort study.

Setting. Nationwide cohort of patients receiving care in the Department of Veterans Affairs, the largest integrated healthcare system in the United States.

Participants. All patients hospitalized with laboratory-confirmed SARS-CoV-2 infection March 1 to July 31, 2020, without a history of therapeutic anticoagulation.

Exposures. Prophylactic doses of subcutaneous heparin, low-molecular-weight heparin, or direct oral anticoagulants.

Main Outcomes and Measures. 30-day mortality. Secondary outcomes: inpatient mortality and initiating therapeutic anticoagulation.

Results. Of 4,297 patients hospitalized with COVID-19, 3,627 (84.4%) received prophylactic anticoagulation within 24 hours of admission. More than 99% (n=3,600) received subcutaneous heparin or enoxaparin. We observed 622 deaths within 30 days of admission, 513 among those who received prophylactic anticoagulation. Most deaths (510/622, 82%) occurred during hospitalization. In inverse probability of treatment weighted analyses, cumulative adjusted incidence of mortality at 30 days was 14.3% (95% CI 13.1-15.5) among those receiving prophylactic anticoagulation and 18.7% (95% CI 15.1-22.9) among those who did not. Compared to patients who did not receive prophylactic anticoagulation, those who did had a 27% decreased risk for 30-day mortality (HR 0.73, 95% CI 0.66-0.81). Similar associations were found for inpatient mortality and initiating therapeutic anticoagulation. Quantitative bias analysis demonstrated that results were robust to unmeasured confounding (e-value lower 95% CI 1.77). Results persisted in a number of sensitivity analyses.

Conclusions and Relevance. Early initiation of prophylactic anticoagulation among patients hospitalized with COVID-19 was associated with a decreased risk of mortality. These findings provide strong real-world evidence to support guidelines recommending the use of prophylactic anticoagulation as initial therapy for COVID-19 patients upon hospital admission.

Background

Severe acute respiratory syndrome coronavirus 2 (SARS-CoV-2), the virus that causes coronavirus disease 2019 (COVID-19), continues to spread worldwide. Deaths among individuals with COVID-19 have been partially attributed to venous thromboembolism and arterial thromboses.^{1,2} In intensive care settings, prevalence of venous thromboembolism among patients with COVID-19 has been reported to be over 40%.³ In response, several expert organizations including the American Society of Hematology, the International Society on Thrombosis and Haemostasis, and the CHEST Guideline and Expert Panel have recommended the use of prophylactic anticoagulation for patients admitted with COVID-19 who do not have a contraindication to this therapy.^{1,4,5}

The most commonly used anticoagulants in hospital settings are heparin-based. Given these drugs also possess anti-inflammatory properties,^{6–8} heparin-based therapies may be particularly effective in treating patients with COVID-19.⁹ Evaluations of the efficacy of prophylactic anticoagulation in COVID-19 patients in randomized clinical trials are underway but yet to be reported.¹⁰ Previous observational cohort studies have shown evidence that use of anticoagulation in COVID-19 patients was associated with decreased risk of mortality,^{11,12} however, these studies were limited in sample size or relatively small healthcare systems. Our objective was to estimate the effect of early initiation of prophylactic anticoagulation on the risk of 30-day mortality among patients hospitalized with COVID-19 in the largest integrated healthcare system in the United States.

Methods

Study design and population

We conducted an observational cohort study using electronic health record (EHR) data from the US Department of Veterans Affairs (VA), which comprises over 1,200 points of care nationwide including hospitals, medical centers, and community outpatient clinics. All care is recorded in an EHR with daily uploads into the VA Corporate Data Warehouse. Available data include demographics, outpatient and inpatient encounters, diagnoses, procedures, smoking and alcohol health behaviors, pharmacy dispensing records, vital signs, laboratory measures, and death information.

We included all patients hospitalized between March 1 and July 31, 2020 who had a laboratory-confirmed positive SARS-CoV-2 test result on or within 14 days prior to hospital admission. We excluded patients who had no history of care (defined as at least one outpatient or inpatient encounter in the two years prior to March 1, 2020), received therapeutic anticoagulation in the 30 days prior to hospital admission (to mitigate the effect of prevalent use of anticoagulation), received a red blood cell transfusion with 24 hours of admission (as active bleeding or severe anemia may have been a contraindication for anticoagulation), or experienced any of the primary outcomes (i.e., died or initiated therapeutic anticoagulation) within 24 hours of admission and therefore did not have equal chance to be classified as exposed in this study.

Forms and doses of anticoagulation

We extracted inpatient pharmacy records for warfarin, intravenous heparin, low-molecular-weight heparin (LMWH; i.e., enoxaparin, fondaparinux, dalteparin), and direct oral anticoagulants (DOAC; i.e., apixaban, rivaroxaban, dabigatran). Doses and routes considered prophylactic anticoagulation are listed in **Box 1**. Any dose higher than these levels, in addition to warfarin at any dose, were considered therapeutic anticoagulation.

Box 1. Agents and doses of prophylactic anticoagulation				
Type	Drug	Route	Prophylactic dose	Observed in sample
Heparin	Heparin	SC	5000 units b.i.d. or t.i.d.	1094 (30.2%)
LMWH	Enoxaparin	SC	40 mg q.d. or 30 mg b.i.d.	2506 (69.1%)
LMWH	Fondaparinux	SC	2.5 mg q.d.	4 (0.1%)
LMWH	Dalteparin	SC	2500-5000 units q.d.	-
DOAC	Apixaban	Oral	2.5 mg b.i.d.	21 (0.6%)
DOAC	Rivaroxaban	Oral	10 mg q.d. or 2.5 mg b.i.d. for arterial disease	2 (0.1%)
DOAC	Dabigatran	Oral	220 mg q.d.	-

Abbreviations: q.d., once daily; b.i.d., twice daily; t.i.d., thrice daily; SC, subcutaneous; LMWH, low-molecular-weight heparin; DOAC, direct oral anticoagulant

Exposure, outcomes, and follow-up

The exposure of interest was receipt of prophylactic anticoagulation in the first 24 hours of hospitalization compared to no receipt of prophylactic anticoagulation in the same time frame. Primary outcome was mortality within 30 days of hospital admission (“30-day mortality”), which included in-hospital deaths as well as those that occurred after discharge. Secondary outcomes were inpatient mortality and initiation of therapeutic anticoagulation. Algorithms to identify thromboembolic events during hospitalizations of COVID-19 patients have yet to be validated; thus, we considered initiation of therapeutic levels of anticoagulation after the first 24 hours of admission a proxy for a thromboembolic event. For all outcomes, we followed patients from date of hospital admission until earliest of date of outcome or a maximum of 30 days.

Some VA hospitals report observation periods and admissions separately, even when a patient has not moved beds or changed providers. We combined these periods and considered a full hospitalization to begin at first presentation in a VA hospital and end when there was not a subsequent “stay” that began within 24 hours. Study design is depicted in **Figure 1**.

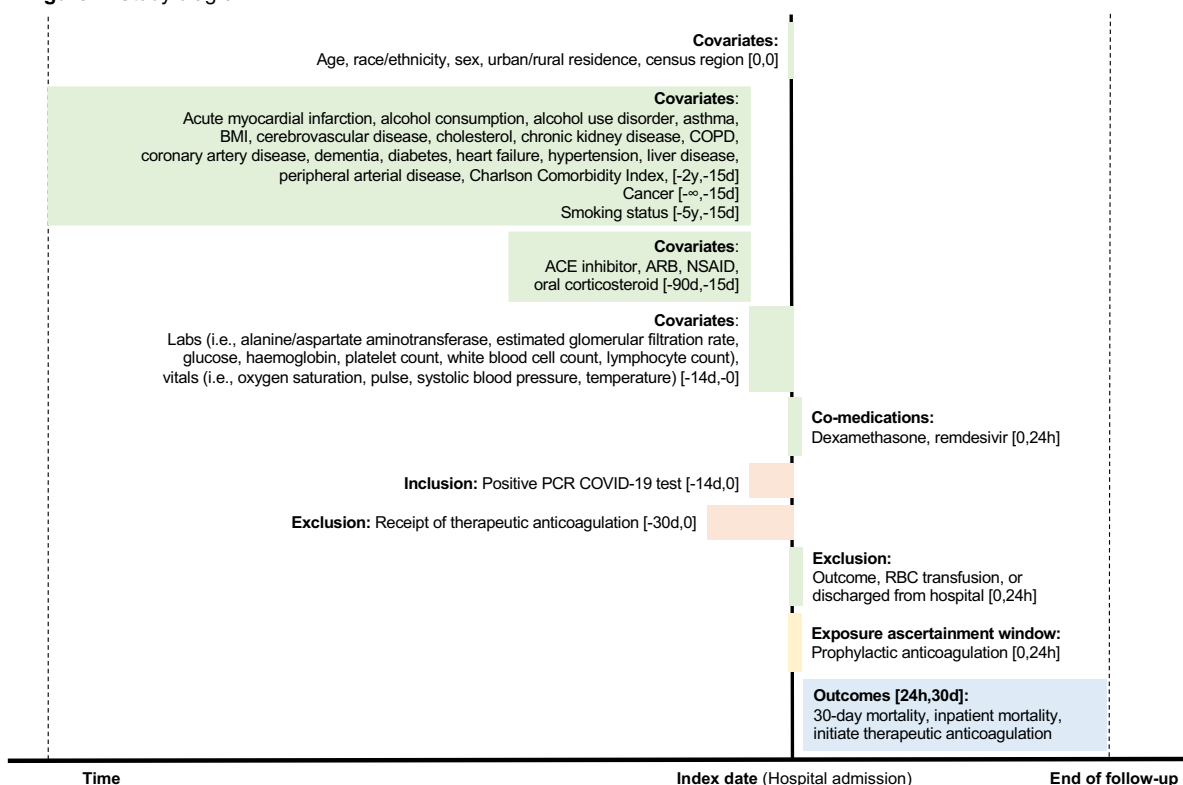
Covariates

Potential confounders in the relationship between receipt of anticoagulation and COVID-19 mortality or thromboembolic events were identified by reviewing existing literature and through discussions with clinicians. We extracted information on age, race/ethnicity, sex, urban/rural residence, US Census region, clinical comorbidities, Charlson Comorbidity Index, and substance use. Presence of clinical comorbidities was determined by one inpatient or two outpatient diagnoses using International Classification of Diseases - 9th or 10th edition (ICD-9/10) codes in the two years prior to hospitalization, except for cancer, which was considered

present if diagnosed ever prior to hospitalization. Level of alcohol consumption was calculated using the most recent Alcohol Use Disorder Identification Test - Consumption (AUDIT-C)¹³ measure within two years prior to admission. Smoking status was determined by the most frequent response in the five years prior to hospitalization.¹⁴

We ascertained medication history in the 15 to 90 days prior to hospitalization. We captured vital signs and laboratory measures to account for acute health status at hospital admission. Height and weight measurements closest to hospitalization within five and two years, respectively, prior to admission were used to calculate body mass index. All other vital signs and all laboratory measures utilized the value closest to hospitalization within 14 days prior to admission. Further details on covariate ascertainment windows are depicted in **Figure 1**.

Figure 1. Study diagram



Abbreviations: h, hour; d, day; m, month; y, year; BMI, body mass index; COPD, chronic obstructive pulmonary disease; ACE, angiotensin converting enzyme; ARB, angiotensin II receptor blocker; NSAID, non-steroidal anti-inflammatory drug; PCR, polymerase chain reaction; RBC, red blood cell
Notes: End of follow-up for all outcomes was earliest of: date of outcome, a maximum of 30 days, or August 30, 2020. For the analysis of inpatient mortality and initiating therapeutic anticoagulation, we further censored patients at date of hospital discharge.

To account for potential effects of co-medications with other COVID-19 treatments, we ascertained receipt of oral or intravenous dexamethasone¹⁵ at any dose or intravenous remdesivir¹⁶ at any dose within the first 24 hours of hospitalization as well as treatments received after the first 24 hours.

Covariates with the largest proportion of missing data included alanine aminotransferase (13.5%), aspartate aminotransferase (15.2%), lymphocyte count (15.0%), and total cholesterol (14.1%): all other covariates had <10% missing.

Propensity score model

We used inverse probability of treatment (IPT) weighting to estimate the marginal treatment effect. We first modeled the probability of receiving the exposure of interest as a function of all measured covariates (apart from in-hospital treatments received after the first 24 hours so as to not use future information at baseline).¹⁷ Propensity scores (i.e., the predicted probability of exposure) were estimated using a multivariable logistic regression model. We included a missing category for covariates with missing data. The area under the receiver operating characteristic curve was 0.74. Each patient was weighted by the inverse probability of receiving the exposure of interest, with the goal of balancing observable characteristics between treatment groups. After IPT weighting, the distribution of propensity scores between the treatment groups overlapped nearly perfectly (**eFigure 1**). We calculated absolute standardized mean differences between treatment groups and considered ≤ 0.2 as balanced,¹⁸ although the vast majority were ≤ 0.1 (**eFigure 2**). Thus, the weighting produced treatment groups that were considered well balanced.

Statistical methods

Covariates were summarized using descriptive statistics, stratified by treatment group. We generated IPT-weighted Kaplan Meier plots. We used Cox regression models with days since hospital admission as the timescale to estimate IPT-weighted hazard ratios (HRs) and 95% confidence intervals (CIs) for the effect of early initiation of prophylactic doses of anticoagulation on 30-day mortality, inpatient mortality, and initiating therapeutic anticoagulation. Both secondary outcomes occur during hospitalization, wherein discharge from hospital was considered a competing event. If patients were censored at discharge, absolute risks derived from Kaplan-Meier analyses would be overestimated.^{19,20} We therefore displayed cumulative adjusted incidence rates by treatment group treating discharge as a competing event (i.e., no censoring at date of discharge). We nonetheless chose to display cause-specific rather than sub-distribution hazard ratios as our question was etiological in nature.²¹ These cause-specific hazard ratios were interpreted as the effect of prophylactic anticoagulation on each of the outcomes irrespective of its effect on discharge. Proportional hazards were checked by examining the complementary log-log (or the log of negative log) of estimated survivor functions for exposed and unexposed groups versus the log of survival time. There was no evidence of proportional hazards violations.

Sensitivity analyses

For each outcome, we used quantitative bias analysis to calculate an e-value, which demonstrates the strength of association between an unmeasured confounder and exposure or outcome, conditional on measured covariates, that would be necessary to fully explain observed effects.²² To assess for undue effects from outliers with very high or very low estimated propensity of treatment, we capped propensity score distributions at the 1st/99th and again at the 5th/95th percentiles. To account for potentially biased estimation of standard errors or influence from very high or very low weights, we performed sensitivity analyses using combinations of robust standard error estimation²³ and stabilized weighting.²⁴ We re-ran the primary analyses extending the exposure ascertainment window from 24 to 48 hours. Given the low frequency of DOAC use in the cohort, we re-ran analyses excluding DOACs from the exposure definition. In

post-hoc analyses, we assessed the effect of prophylactic anticoagulation separately by the two most commonly prescribed drugs in the cohort, heparin and enoxaparin. We used Microsoft SQL Server Management Studio v17.4 for data management and SAS version 9.4 (SAS Institute, Cary, NC, US) and Stata 16 MP for statistical analyses.

Ethics

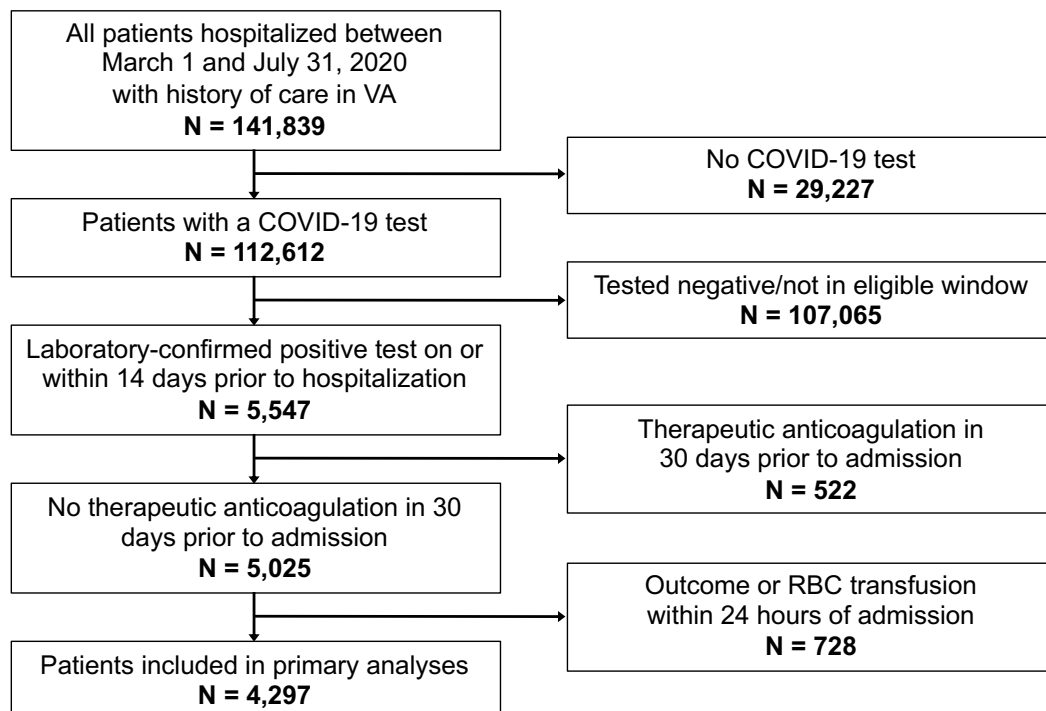
This study was approved by the institutional review boards of VA Connecticut Healthcare System and Yale University. It has been granted a waiver of informed consent and is Health Insurance Portability and Accountability Act compliant. This study is reported as per the Strengthening the Reporting of Observational Studies in Epidemiology (STROBE) and REporting of studies Conducted using Observational Routinely collected health Data for pharmacoepidemiology (RECORD-PE) guidelines (**Supplementary Appendix**).

Results

Patient characteristics

We identified 4,297 patients hospitalized with COVID-19 between March 1 and July 31, 2020 who were included in this analysis (**Figure 2**).

Figure 2. Flow chart



Abbreviations: VA, US Department of Veterans Affairs; COVID-19, coronavirus disease 2019; RBC, red blood cell

Median age in the cohort was 68 years (interquartile range [IQR] 58-75); most were non-Hispanic Black (n=1,940, n=45.1%), non-Hispanic White (n=1,603, 37.3%), or Hispanic (n=506, 11.8%). The majority were male (n=4,015, 93.4%), geographically located in the South (n=2,017, 46.9%), and lived in an urban area (n=3,768, 87.7%) (**Table 1**). By month, most patients were hospitalized in July (n=1,401, 32.6%).

Table 1. Demographic and clinical characteristics of 4,297 hospitalized patients with COVID-19 by exposure to prophylactic dose of anticoagulation (AC) within 24 hours of admission, before and after weighting

	Unweighted			IPT-weighted		
	No AC	AC	SMD	No AC	AC	SMD
Sample size, n	670	3627	-	4273	4303	-
Demographics						
Age, years						
Median (IQR)	69.0 (58.0-76.5)	68.1 (58.2-74.8)	0.04	69.4 (59.7-76.5)	68.3 (58.2-75.0)	0.04
20-49	89 (13.3)	446 (12.3)	0.03	476 (11.2)	530 (12.3)	0.04
50-59	105 (15.7)	619 (17.1)	0.04	625 (14.6)	724 (16.8)	0.06
60-69	161 (24.0)	951 (26.2)	0.05	1106 (25.9)	1114 (25.9)	0.00
70-79	188 (28.1)	1056 (29.1)	0.02	1302 (30.5)	1249 (29.0)	0.03
≥80	127 (19.0)	555 (15.3)	0.10	764 (17.9)	685 (15.9)	0.05
Race/ethnicity						
White	256 (38.2)	1347 (37.1)	0.02	1660 (38.9)	1608 (37.4)	0.03
Black	291 (43.4)	1649 (45.5)	0.04	1877 (43.9)	1944 (45.2)	0.03
Hispanic	74 (11.0)	432 (11.9)	0.03	475 (11.1)	503 (11.7)	0.02
Other	22 (3.3)	102 (2.8)	0.03	152 (3.6)	126 (2.9)	0.04
Unknown	27 (4.0)	97 (2.7)	0.08	109 (2.6)	122 (2.8)	0.02
Male sex	620 (92.5)	3395 (93.6)	0.04	4029 (94.3)	4020 (93.4)	0.04
Urban residence	587 (87.6)	3181 (87.7)	0.00	3823 (89.5)	3777 (87.8)	0.05
Census region						
Midwest	79 (11.8)	724 (20.0)	0.22	685 (16.0)	799 (18.6)	0.07
Northeast	139 (20.7)	622 (17.1)	0.09	863 (20.2)	764 (17.8)	0.06
South	314 (46.9)	1703 (47.0)	0.00	1992 (46.6)	2019 (46.9)	0.01
West	138 (20.6)	578 (15.9)	0.12	733 (17.2)	720 (16.7)	0.01
Month of admission						
March	116 (17.3)	518 (14.3)	0.08	645 (15.1)	631 (14.7)	0.01
April	169 (25.2)	868 (23.9)	0.03	981 (22.9)	1041 (24.2)	0.03
May	70 (10.4)	429 (11.8)	0.04	552 (12.9)	499 (11.6)	0.04
June	110 (16.4)	616 (17.0)	0.02	721 (16.9)	727 (16.9)	0.00
July	205 (30.6)	1196 (33.0)	0.05	1375 (32.2)	1404 (32.6)	0.01
Clinical conditions						
Acute myocardial infarction	11 (1.6)	66 (1.8)	0.01	90 (2.1)	79 (1.8)	0.02

Asthma	33 (4.9)	176 (4.9)	0.00	234 (5.5)	210 (4.9)	0.03
Cancer, any	97 (14.5)	494 (13.6)	0.02	635 (14.9)	595 (13.8)	0.03
Cerebrovascular disease	85 (12.7)	369 (10.2)	0.08	446 (10.4)	458 (10.7)	0.01
Chronic kidney disease	136 (20.3)	694 (19.1)	0.03	870 (20.4)	840 (19.5)	0.02
COPD	105 (15.7)	544 (15.0)	0.02	716 (16.8)	655 (15.2)	0.04
Coronary artery disease	25 (3.7)	90 (2.5)	0.07	129 (3.0)	118 (2.7)	0.02
Dementia	104 (15.5)	378 (10.4)	0.15	520 (12.2)	486 (11.3)	0.03
Diabetes	269 (40.1)	1573 (43.4)	0.07	1714 (40.1)	1845 (42.9)	0.06
Heart failure	77 (11.5)	375 (10.3)	0.04	529 (12.4)	463 (10.8)	0.05
Hypertension	446 (66.6)	2470 (68.1)	0.03	2754 (64.5)	2918 (67.8)	0.07
Liver disease	71 (10.6)	322 (8.9)	0.06	417 (9.8)	397 (9.2)	0.02
Peripheral arterial disease	70 (10.4)	387 (10.7)	0.01	471 (11.0)	458 (10.6)	0.01
Charlson Comorbidity Index						
0	130 (19.4)	765 (21.1)	0.04	807 (18.9)	898 (20.9)	0.05
1	110 (16.4)	723 (19.9)	0.09	775 (18.1)	845 (19.6)	0.04
2	119 (17.8)	657 (18.1)	0.01	805 (18.8)	767 (17.8)	0.03
3	74 (11.0)	394 (10.9)	0.01	502 (11.8)	468 (10.9)	0.03
4	69 (10.3)	324 (8.9)	0.05	434 (10.2)	386 (9.0)	0.04
≥5	168 (25.1)	764 (21.1)	0.10	950 (22.2)	938 (21.8)	0.01
Medication history						
ACE inhibitor	119 (17.8)	807 (22.2)	0.11	843 (19.7)	924 (21.5)	0.04
ARB	78 (11.6)	481 (13.3)	0.05	520 (12.2)	565 (13.1)	0.03
NSAID	144 (21.5)	731 (20.2)	0.03	814 (19.1)	874 (20.3)	0.03
Oral corticosteroid	156 (23.3)	875 (24.1)	0.02	1026 (24.0)	1031 (24.0)	0.00
In-hospital treatments						
Dexamethasone						
Within 24 hours	74 (11.0)	588 (16.2)	0.15	616 (14.4)	662 (15.4)	0.03
After 24 hours	115 (17.2)	892 (24.6)	0.18	923 (21.6)	1014 (23.6)	0.05
Remdesivir						
Within 24 hours	35 (5.2)	437 (12.0)	0.24	408 (9.5)	471 (10.9)	0.05
After 24 hours	89 (13.3)	791 (21.8)	0.23	681 (15.9)	891 (20.7)	0.12
Substance use						
Alcohol consumption/disorder						
Abstinent	51 (7.6)	300 (8.3)	0.02	355 (8.3)	353 (8.2)	0.00
Low-risk consumption	360 (53.7)	1831 (50.5)	0.07	2113 (49.4)	2192 (50.9)	0.03
At-risk consumption	148 (22.1)	965 (26.6)	0.11	1145 (26.8)	1111 (25.8)	0.02
Hazardous consumption	28 (4.2)	161 (4.4)	0.01	157 (3.7)	187 (4.4)	0.03
Alcohol use disorder	3 (0.4)	19 (0.5)	0.01	21 (0.5)	22 (0.5)	0.00
Missing	80 (11.9)	351 (9.7)	0.07	482 (11.3)	436 (10.1)	0.04

Smoking status						
Never	17 (2.5)	63 (1.7)	0.06	84 (2.0)	82 (1.9)	0.00
Former	258 (38.5)	1431 (39.5)	0.02	1502 (35.1)	1681 (39.1)	0.08
Current	225 (33.6)	1355 (37.4)	0.08	1805 (42.3)	1583 (36.8)	0.11
<i>Missing</i>	170 (25.4)	778 (21.5)	0.09	882 (20.6)	956 (22.2)	0.04
Vital signs						
Body mass index, kg/m ²						
<26	206 (30.7)	938 (25.9)	0.11	1257 (29.4)	1150 (26.7)	0.06
26-32	258 (38.5)	1436 (39.6)	0.02	1876 (43.9)	1705 (39.6)	0.09
≥33	169 (25.2)	1113 (30.7)	0.12	986 (23.1)	1271 (29.5)	0.15
<i>Missing</i>	37 (5.5)	140 (3.9)	0.08	155 (3.6)	177 (4.1)	0.03
Oxygen saturation, %						
<93	72 (10.7)	582 (16.0)	0.16	628 (14.7)	656 (15.2)	0.02
93-96	182 (27.2)	1147 (31.6)	0.10	1336 (31.3)	1328 (30.9)	0.01
≥96	396 (59.1)	1775 (48.9)	0.21	2150 (50.3)	2177 (50.6)	0.01
<i>Missing</i>	20 (3.0)	123 (3.4)	0.02	160 (3.7)	142 (3.3)	0.02
Pulse, beats/min						
<90	438 (65.4)	2200 (60.7)	0.10	2649 (62.0)	2649 (61.6)	0.01
≥90	232 (34.6)	1427 (39.3)	0.10	1624 (38.0)	1653 (38.4)	0.01
Systolic blood pressure, mm Hg						
<140	446 (66.6)	2360 (65.1)	0.03	2688 (62.9)	2804 (65.2)	0.05
≥140	224 (33.4)	1267 (34.9)	0.03	1585 (37.1)	1499 (34.8)	0.05
Temperature, °F						
≤98.6	356 (53.1)	1701 (46.9)	0.12	2085 (48.8)	2061 (47.9)	0.02
98.6-100.3	244 (36.4)	1292 (35.6)	0.02	1471 (34.4)	1538 (35.8)	0.03
≥100.4	70 (10.4)	634 (17.5)	0.20	717 (16.8)	703 (16.3)	0.01
Laboratory findings						
Alanine aminotransferase, U/L						
≤30	297 (44.3)	1722 (47.5)	0.06	2157 (50.5)	2024 (47.0)	0.07
>30	241 (36.0)	1456 (40.1)	0.09	1498 (35.1)	1690 (39.3)	0.09
<i>Missing</i>	132 (19.7)	449 (12.4)	0.20	618 (14.5)	588 (13.7)	0.02
Aspartate aminotransferase, U/L						
≤30	225 (33.6)	1171 (32.3)	0.03	1432 (33.5)	1400 (32.5)	0.02
>30	301 (44.9)	1949 (53.7)	0.18	2108 (49.3)	2244 (52.1)	0.06
<i>Missing</i>	144 (21.5)	507 (14.0)	0.20	733 (17.2)	659 (15.3)	0.05
eGFR, mL/min						
≥60	354 (52.8)	2034 (56.1)	0.07	2324 (54.4)	2388 (55.5)	0.02
30-59	159 (23.7)	957 (26.4)	0.06	1108 (25.9)	1115 (25.9)	0.00
<30	82 (12.2)	418 (11.5)	0.02	547 (12.8)	503 (11.7)	0.03

<i>Missing</i>	75 (11.2)	218 (6.0)	0.19	294 (6.9)	297 (6.9)	0.00
Glucose, mg/dL						
≤170	486 (72.5)	2766 (76.3)	0.09	3264 (76.4)	3250 (75.5)	0.02
>170	135 (20.1)	759 (20.9)	0.02	850 (19.9)	897 (20.8)	0.02
<i>Missing</i>	49 (7.3)	102 (2.8)	0.21	159 (3.7)	156 (3.6)	0.00
Hemoglobin, g/dL						
≤14	387 (57.8)	2151 (59.3)	0.03	2490 (58.3)	2546 (59.2)	0.02
>14	231 (34.5)	1353 (37.3)	0.06	1621 (37.9)	1581 (36.7)	0.02
<i>Missing</i>	52 (7.8)	123 (3.4)	0.19	162 (3.8)	175 (4.1)	0.02
Platelet count, K/μL						
≤230	421 (62.8)	2433 (67.1)	0.09	2939 (68.8)	2855 (66.3)	0.05
>230	195 (29.1)	1097 (30.2)	0.02	1186 (27.7)	1292 (30.0)	0.05
<i>Missing</i>	54 (8.1)	97 (2.7)	0.24	149 (3.5)	156 (3.6)	0.01
White blood cell count, K/μL						
≤6	299 (44.6)	1747 (48.2)	0.07	2071 (48.5)	2047 (47.6)	0.02
>6	319 (47.6)	1786 (49.2)	0.03	2058 (48.2)	2105 (48.9)	0.02
<i>Missing</i>	52 (7.8)	94 (2.6)	0.24	144 (3.4)	152 (3.5)	0.01
Lymphocyte count, K/μL						
≤0.6	100 (14.9)	600 (16.5)	0.04	705 (16.5)	702 (16.3)	0.01
>0.6	431 (64.3)	2523 (69.6)	0.11	2851 (66.7)	2951 (68.6)	0.04
<i>Missing</i>	139 (20.7)	504 (13.9)	0.18	717 (16.8)	650 (15.1)	0.05
Total cholesterol, mg/dL						
≤130	152 (22.7)	678 (18.7)	0.10	794 (18.6)	826 (19.2)	0.02
>130	415 (61.9)	2444 (67.4)	0.11	2815 (65.9)	2864 (66.6)	0.01
<i>Missing</i>	103 (15.4)	505 (13.9)	0.04	665 (15.6)	613 (14.2)	0.04
HDL cholesterol, mg/dL						
<38	180 (26.9)	917 (25.3)	0.04	1099 (25.7)	1093 (25.4)	0.01
38-49	202 (30.1)	1213 (33.4)	0.07	1434 (33.6)	1418 (33.0)	0.01
≥50	181 (27.0)	988 (27.2)	0.01	1067 (25.0)	1171 (27.2)	0.05
<i>Missing</i>	107 (16.0)	509 (14.0)	0.05	672 (15.7)	621 (14.4)	0.04
LDL cholesterol, mg/dL						
<30	58 (8.7)	310 (8.5)	0.00	350 (8.2)	366 (8.5)	0.01
60-89	133 (19.9)	628 (17.3)	0.07	723 (16.9)	768 (17.9)	0.02
≥90	370 (55.2)	2165 (59.7)	0.09	2514 (58.8)	2531 (58.8)	0.00
<i>Missing</i>	109 (16.3)	524 (14.4)	0.05	686 (16.1)	638 (14.8)	0.03

Abbreviations: COVID-19, coronavirus disease 2019; IPT, inverse probability of treatment; SMD, absolute value of the standardized mean difference; COPD, chronic obstructive pulmonary disease; ACE, angiotensin converting enzyme; ARB, angiotensin II receptor blocker; NSAID, non-steroidal anti-inflammatory drug; eGFR, estimated glomerular filtration rate; HDL, high-density lipoprotein; LDL, low-density lipoprotein

Note: Reported as n(%) unless otherwise specified

In this cohort, 3,627 (84.4%) patients received prophylactic anticoagulation within the first 24 hours of hospital admission. Among those who received prophylactic anticoagulation, the most

common drugs were heparin-based: either subcutaneous heparin (n=1,094, 30.2%) or enoxaparin (n=2,506, 69.1%; **Box 1 in the Supplementary Appendix**).

At hospital presentation, the group of patients who received prophylactic anticoagulation, compared to the group of patients who did not, had a higher proportion with an oxygen saturation level less than 93% (Table 1; 16.0% versus 10.3%), heart rate at 90 beats per minute or above (39.2% versus 34.5%), and temperature of 100.4 degrees Fahrenheit or above (17.5% versus 10.6%). In contrast, the burden of prevalent comorbid disease (Charlson Comorbidity Index ≥ 5) was lower among those who received prophylactic anticoagulation as compared to those that did not (21.1% versus 25.1%, respectively). Co-medication with other COVID-19 treatments within the first 24 hours of admission were more common among those who received prophylactic anticoagulation compared to those who did not (16.2% versus 11.0% for dexamethasone; 12.0% versus 5.2% for remdesivir). However, after IPT-weighting, differences were minimized between the two treatment groups (all standardized mean differences ≤ 0.2 with vast majority ≤ 0.1 ; **Table 1**).

Absolute and relative risks

There were 622 deaths (622/4297, 14.5%) that occurred within 30 days of hospital admission, 513 among those who received prophylactic anticoagulation (**Table 2**). Most deaths (510/622, 82%) occurred during hospitalization. In IPT-weighted analyses, cumulative adjusted incidence of mortality at 30 days was 14.3% (95% CI 13.1-15.5) and 18.7% (95% CI 15.1-22.9) for patients receiving and not receiving prophylactic anticoagulation, respectively (**Table 2**). Receipt of prophylactic anticoagulation was associated with a 27% decreased risk of death over the first 30 days (HR 0.73, 95% CI 0.66-0.81; **Figure 3**) compared to not receiving prophylactic anticoagulation. Similar associations were found for inpatient mortality (HR 0.69, 95% CI 0.61-0.77) and initiating therapeutic anticoagulation (HR 0.81, 95% CI 0.73-0.90).

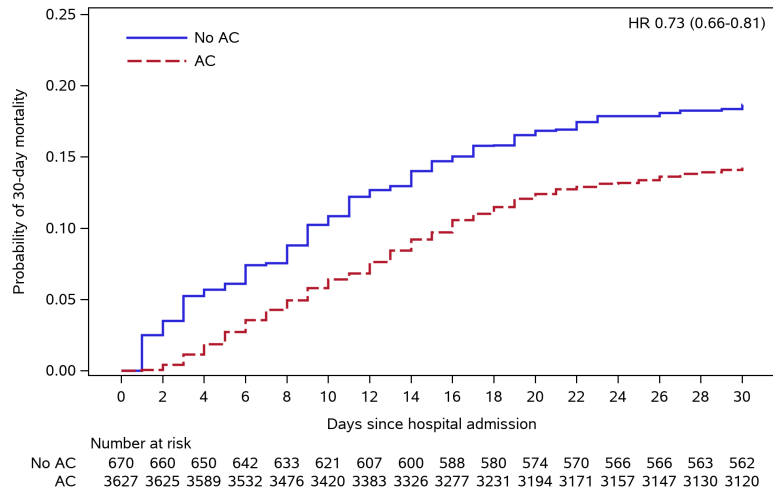
Table 2. Absolute and relative risks associated with exposure to prophylactic doses of anticoagulation in the first 24 hours of hospitalization

Outcome	N	No. events	Unweighted	IPT-weighted	
			HR (95% CI)	Cumulative incidence (95% CI)	HR (95% CI)
30-day mortality					
Exposed	3627	513	0.85 (0.69-1.05)	14.3 (13.1-15.5)	0.73 (0.66-0.81)
Unexposed	670	109	ref	18.7 (15.1-22.9)	ref
Inpatient mortality					
Exposed	3627	418	0.82 (0.66-1.03)	11.7 (10.7-12.8)	0.69 (0.61-0.77)
Unexposed	670	92	ref	16.4 (13.0-20.5)	ref
Initiate therapeutic anticoagulation					
Exposed	3627	573	1.14 (0.91-1.42)	15.6 (14.4-16.8)	0.81 (0.73-0.90)
Unexposed	670	92	ref	18.8 (15.2-23.1)	ref

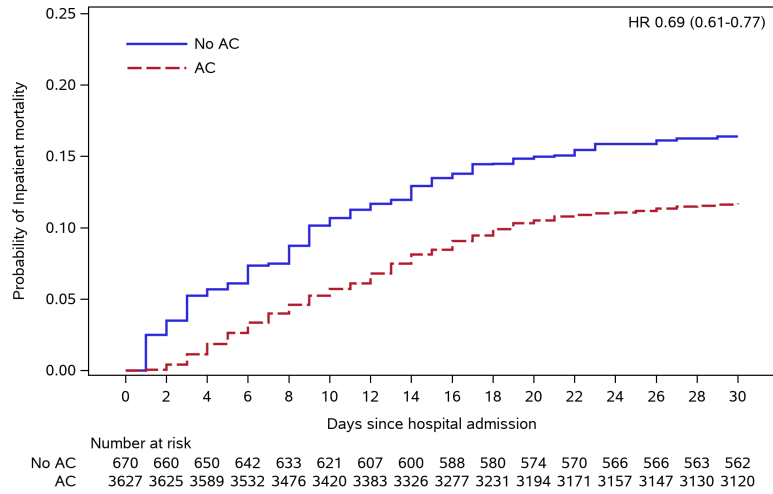
Abbreviations: PY, person-years; HR, hazard ratio; CI, confidence interval; IPT, inverse probability of treatment

Figure 3. Inverse probability treatment-weighted Kaplan-Meier plots

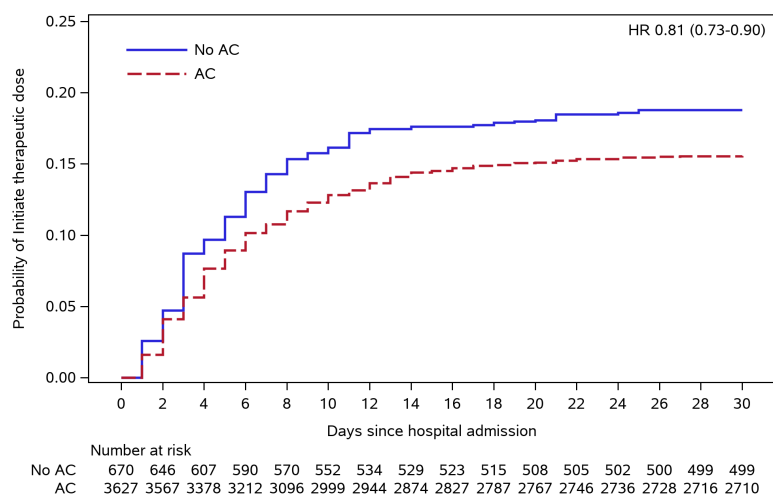
(a) 30-day mortality



(b) Inpatient mortality



(c) Initiate therapeutic anticoagulation



Abbreviations: AC, prophylactic anticoagulation

Sensitivity analyses

Quantitative bias analysis demonstrated that an unmeasured confounder would need to be strongly associated with receipt of prophylactic anticoagulation and each outcome to explain the observed associations: e-value lower 95% CI was 1.77 for 30-day mortality, 1.92 for inpatient mortality, and 1.46 for initiating therapeutic anticoagulation (**eFigure 3**). Results were robust to capping propensity scores (**eTable 1**), using stabilized weighting and robust variance estimation (**eTable 2**), extending the exposure window from 24 to 48 hours (**eTable 3**), and excluding DOACs from the exposure definition (**eTable 4**). In post-hoc analyses, the effect of prophylactic anticoagulation on 30-day mortality was similar when stratified by whether patients received subcutaneous heparin (HR 0.73, 95% CI 0.64-0.84) or enoxaparin (HR 0.78, 95% CI 0.68-0.89; **eTable 5**).

Discussion

Key findings

In a nationwide cohort of 4,297 patients hospitalized with COVID-19 in the largest integrated healthcare system in the United States, initiation of predominantly heparin-based prophylactic anticoagulation within the first 24 hours of admission was associated with a relative risk reduction of 30-day mortality as high as 34% and an absolute risk reduction of 4.5% in the context of an absolute risk of 18.7% among patients who did not receive prophylactic anticoagulation. These results persisted in sensitivity analyses. We observed similar protective effects for secondary outcomes including inpatient mortality and initiation of therapeutic anticoagulation - a proxy for the development of a thromboembolic event.

Comparison with other evidence

Previous studies investigating the role of anticoagulation among patients with COVID-19 have had varied results, but none have reported harm.^{11,12,25–32} Variations in reported associations likely derive from different exposure definitions of anticoagulation, both form and dose. Additionally, different patient populations (e.g., disease-specific cohorts), comparator groups, and inclusion/exclusion criteria were used. One of the largest observational studies to date by Nadkarni et al reported that both prophylactic and therapeutic anticoagulation were associated with a reduction in inpatient mortality by up to 55% compared to those not receiving anticoagulation across five New York City hospitals.¹¹ However, the study allowed patients to switch exposure groups during follow-up without comprehensively accounting for time-updated confounding by indication that may have impacted results.

Our study was designed to emulate a hypothetical clinical trial in which we excluded prevalent users of anticoagulation, balanced covariate distribution at hospital admission (analogous to randomization) and ascertained exposure within 24 hours of admission. We conducted an intention-to-treat analysis since the data required to account for time-updated exposures and confounders (e.g., marginal structural modeling) may not be available within acute hospitalizations. For example, many hospital systems report all diagnoses that occur during a given hospitalization at discharge. Therefore, we could not determine if initiation of prophylactic anticoagulation later in hospitalization confers benefit. There are multiple clinical trials in

progress to determine dosing and timing for anticoagulation during the clinical course of COVID-19.¹⁰ Until clinical trial data are available, our results provide strong evidence for the use of prophylactic anticoagulation as initial therapy for COVID-19 patients upon hospital admission.

Thromboembolic events in the context of COVID-19 are strongly associated with mortality.^{3,25,31,33,34} The etiology of heightened thrombosis remains unclear, although proposed mechanisms have included systemic inflammation, endothelialitis, and activation of the complement system.^{35–37} Increases in a variety of inflammatory pathways, including bradykinin, interleukin-6, C-reactive protein, and growth differentiation factor 15, have been described in COVID-19.^{8,9,38–47} Further, heparin has been shown to block SARS-CoV-2 viral spike protein binding in experimental studies.^{48–50} We postulate that the combination of heparin's known antithrombotic and anti-inflammatory effects,^{6,7} in addition to viral infectivity attenuation may, at least in part, explain the observed benefit associated with prophylactic anticoagulation.

Strengths and limitations

While this study had many strengths, including the availability of detailed, longitudinal, electronic health record data on a nationwide cohort of patients hospitalized with COVID-19, rigorous methodology and findings that were robust to sensitivity analyses, we recognize possible limitations. First, due to the observational nature of the study, a degree of uncertainty persists that can only be addressed through randomized trials. Nonetheless, we took several steps to mitigate potential confounding. We comprehensively accounted for chronic and acute health conditions at hospital admission in addition to other potential COVID-19 treatments to achieve balance of these potential confounders between treatment groups. Further, we showed that our results were robust to unmeasured confounding using quantitative bias analysis, which demonstrated that a confounder would need to be strongly associated with receipt of prophylactic anticoagulation and each of the outcomes considered to explain the observed effects. Second, we did not have available a validated algorithm to identify thromboembolic events as an outcome. However, the use of therapeutic anticoagulation may occur as a result of many reported complications of COVID-19 including venous thromboembolism, arterial thromboembolism, cardiac arrhythmia, and disseminated intravascular coagulation.^{51–58} We surmised that an intensification of anticoagulation indicated an adverse change in clinical condition. Third, this study was conducted on Veterans currently receiving care in the VA, who are older and have a higher prevalence of chronic health conditions and risk behaviors than the general US population.^{59–61} However, prior research has established that after adjusting for age, sex, race/ethnicity, region, and rural/urban residence, all of which were accounted for in this study, there is no difference in total disease burden between Veterans and non-Veterans.⁶¹ Our key finding has also been shown in non-Veteran populations;^{11,12} thus, effects reported in this study are likely generalizable to the wider US population. Fourth, while individuals in VA care represent a diversity of backgrounds, women represented a small proportion of individuals in the sample.

Summary

We studied a nationwide cohort of patients hospitalized with COVID-19 and found that initiation of prophylactic, heparin-based anticoagulation within 24 hours of admission was associated with

a lower risk of 30-day mortality, in-hospital mortality, and initiation of therapeutic-dose anticoagulation likely indicative of a thromboembolic event. Our results provide strong real-world evidence to support guidelines recommending the use of prophylactic anticoagulation as initial therapy for COVID-19 patients upon hospital admission.

References

1. Bikdeli B, Madhavan MV, Jimenez D, et al. COVID-19 and Thrombotic or Thromboembolic Disease: Implications for Prevention, Antithrombotic Therapy, and Follow-Up: JACC State-of-the-Art Review. *J Am Coll Cardiol*. 2020;75(23):2950-2973. doi:10.1016/j.jacc.2020.04.031
2. Wise J. Covid-19 and thrombosis: what do we know about the risks and treatment? *BMJ*. 2020;369:m2058. doi:10.1136/bmj.m2058
3. Zhang L, Feng X, Zhang D, et al. Deep Vein Thrombosis in Hospitalized Patients With COVID-19 in Wuhan, China: Prevalence, Risk Factors, and Outcome. *Circulation*. 2020;142(2):114-128. doi:10.1161/CIRCULATIONAHA.120.046702
4. Barnes GD, Burnett A, Allen A, et al. Thromboembolism and anticoagulant therapy during the COVID-19 pandemic: interim clinical guidance from the anticoagulation forum. *J Thromb Thrombolysis*. 2020;50(1):72-81. doi:10.1007/s11239-020-02138-z
5. Moores LK, Tritschler T, Brosnahan S, et al. Prevention, Diagnosis, and Treatment of VTE in Patients With Coronavirus Disease 2019: CHEST Guideline and Expert Panel Report. *Chest*. 2020;158(3):1143-1163. doi:10.1016/j.chest.2020.05.559
6. Nasiripour S, Gholami K, Mousavi S, et al. Comparison of the Effects of Enoxaparin and Heparin on Inflammatory Biomarkers in Patients with ST-segment Elevated Myocardial Infarction: A prospective Open Label Pilot Clinical Trial. *Iran J Pharm Res*. 2014;13(2):583-590. <https://www.ncbi.nlm.nih.gov/pubmed/25237354>
7. Mousavi S, Moradi M, Khorshidahmad T, Motamedi M. Anti-Inflammatory Effects of Heparin and Its Derivatives: A Systematic Review. *Adv Pharmacol Sci*. 2015;2015:507151. doi:10.1155/2015/507151
8. Li X, Li L, Shi Y, Yu S, Ma X. Different signaling pathways involved in the anti-inflammatory effects of unfractionated heparin on lipopolysaccharide-stimulated human endothelial cells. *J Inflamm*. 2020;17:5. doi:10.1186/s12950-020-0238-7
9. Garvin MR, Alvarez C, Miller JI, et al. A mechanistic model and therapeutic interventions for COVID-19 involving a RAS-mediated bradykinin storm. *Elife*. 2020;9. doi:10.7554/eLife.59177
10. Search on ClinicalTrials.gov. Accessed November 24, 2020. <https://clinicaltrials.gov/ct2/results?cond=COVID-19&term=anticoagulation>
11. Nadkarni GN, Lala A, Bagiella E, et al. Anticoagulation, Bleeding, Mortality, and Pathology in Hospitalized Patients With COVID-19. *J Am Coll Cardiol*. 2020;76(16):1815-1826. doi:10.1016/j.jacc.2020.08.041
12. Tang N, Bai H, Chen X, Gong J, Li D, Sun Z. Anticoagulant treatment is associated with decreased mortality in severe coronavirus disease 2019 patients with coagulopathy. *J Thromb Haemost*. 2020;18(5):1094-1099. doi:10.1111/jth.14817
13. Fiellin DA, Reid MC, O'Connor PG. Screening for alcohol problems in primary care: a systematic review. *Arch Intern Med*. 2000;160(13):1977-1989.

doi:10.1001/archinte.160.13.1977

14. McGinnis KA, Justice AC, Tate JP, et al. Using DNA methylation to validate an electronic medical record phenotype for smoking. *Addict Biol.* 2019;24(5):1056-1065. doi:10.1111/adb.12670
15. RECOVERY Collaborative Group, Horby P, Lim WS, et al. Dexamethasone in Hospitalized Patients with Covid-19 - Preliminary Report. *N Engl J Med.* Published online July 17, 2020. doi:10.1056/NEJMoa2021436
16. Beigel JH, Tomashek KM, Dodd LE, et al. Remdesivir for the Treatment of Covid-19 - Final Report. *N Engl J Med.* Published online October 8, 2020. doi:10.1056/NEJMoa2007764
17. Brookhart MA, Schneeweiss S, Rothman KJ, Glynn RJ, Avorn J, Stürmer T. Variable selection for propensity score models. *Am J Epidemiol.* 2006;163(12):1149-1156. doi:10.1093/aje/kwj149
18. Austin PC. Balance diagnostics for comparing the distribution of baseline covariates between treatment groups in propensity-score matched samples. *Stat Med.* 2009;28(25):3083-3107. doi:10.1002/sim.3697
19. Pepe MS, Mori M. Kaplan-Meier, marginal or conditional probability curves in summarizing competing risks failure time data? *Stat Med.* 1993;12(8):737-751. doi:10.1002/sim.4780120803
20. Gooley TA, Leisenring W, Crowley J, Storer BE. Estimation of failure probabilities in the presence of competing risks: new representations of old estimators. *Stat Med.* 1999;18(6):695-706. doi:10.1002/(sici)1097-0258(19990330)18:6<695::aid-sim60>3.0.co;2-o
21. Lau B, Cole SR, Gange SJ. Competing risk regression models for epidemiologic data. *Am J Epidemiol.* 2009;170(2):244-256. doi:10.1093/aje/kwp107
22. VanderWeele TJ, Ding P. Sensitivity Analysis in Observational Research: Introducing the E-Value. *Ann Intern Med.* 2017;167(4):268-274. doi:10.7326/M16-2607
23. Austin PC. Variance estimation when using inverse probability of treatment weighting (IPTW) with survival analysis. *Stat Med.* 2016;35(30):5642-5655. doi:10.1002/sim.7084
24. Cole SR, Hernán MA. Constructing inverse probability weights for marginal structural models. *Am J Epidemiol.* 2008;168(6):656-664. doi:10.1093/aje/kwn164
25. Paolisso P, Bergamaschi L, D'Angelo EC, et al. Preliminary Experience With Low Molecular Weight Heparin Strategy in COVID-19 Patients. *Front Pharmacol.* 2020;11:1124. doi:10.3389/fphar.2020.01124
26. Paranjpe I, Fuster V, Lala A, et al. Association of Treatment Dose Anticoagulation With In-Hospital Survival Among Hospitalized Patients With COVID-19. *J Am Coll Cardiol.* 2020;76(1):122-124. doi:10.1016/j.jacc.2020.05.001
27. Salah HM, Naser JA, Calcaterra G, Bassareo PP, Mehta JL. The Effect of Anticoagulation Use on Mortality in COVID-19 Infection. *Am J Cardiol.* 2020;134:155-157. doi:10.1016/j.amjcard.2020.08.005

28. Wijaya I, Andhika R, Huang I. The Use of Therapeutic-Dose Anticoagulation and Its Effect on Mortality in Patients With COVID-19: A Systematic Review. *Clin Appl Thromb Hemost*. 2020;26:1076029620960797. doi:10.1177/1076029620960797
29. Rossi R, Coppi F, Talarico M, Boriani G. Protective role of chronic treatment with direct oral anticoagulants in elderly patients affected by interstitial pneumonia in COVID-19 era. *Eur J Intern Med*. 2020;77:158-160. doi:10.1016/j.ejim.2020.06.006
30. Ayerbe L, Risco C, Ayis S. The association between treatment with heparin and survival in patients with Covid-19. *J Thromb Thrombolysis*. 2020;50(2):298-301. doi:10.1007/s11239-020-02162-z
31. Ferguson J, Volk S, Vondracek T, Flanigan J, Chernaik A. Empiric Therapeutic Anticoagulation and Mortality in Critically Ill Patients With Respiratory Failure From SARS-CoV-2: A Retrospective Cohort Study. *J Clin Pharmacol*. 2020;60(11):1411-1415. doi:10.1002/jcph.1749
32. Billett HH, Reyes-Gil M, Szymanski J, et al. Anticoagulation in COVID-19: Effect of Enoxaparin, Heparin, and Apixaban on Mortality. *Thromb Haemost*. Published online November 13, 2020. doi:10.1055/s-0040-1720978
33. Bilaloglu S, Aphinyanaphongs Y, Jones S, Iturrate E, Hochman J, Berger JS. Thrombosis in Hospitalized Patients With COVID-19 in a New York City Health System. *JAMA*. 2020;324(8):799-801. doi:10.1001/jama.2020.13372
34. Daughety MM, Morgan A, Frost E, et al. COVID-19 associated coagulopathy: Thrombosis, hemorrhage and mortality rates with an escalated-dose thromboprophylaxis strategy. *Thromb Res*. 2020;196:483-485. doi:10.1016/j.thromres.2020.10.004
35. Carvelli J, Demaria O, Vély F, et al. Association of COVID-19 inflammation with activation of the C5a-C5aR1 axis. *Nature*. Published online July 29, 2020. doi:10.1038/s41586-020-2600-6
36. Ackermann M, Verleden SE, Kuehnel M, et al. Pulmonary Vascular Endothelialitis, Thrombosis, and Angiogenesis in Covid-19. *N Engl J Med*. 2020;383(2):120-128. doi:10.1056/NEJMoa2015432
37. Meini S, Giani T, Tascini C. Intussusceptive angiogenesis in Covid-19: hypothesis on the significance and focus on the possible role of FGF2. *Mol Biol Rep*. 2020;47(10):8301-8304. doi:10.1007/s11033-020-05831-7
38. Masi P, Hékimian G, Lejeune M, et al. Systemic Inflammatory Response Syndrome Is a Major Contributor to COVID-19-Associated Coagulopathy: Insights From a Prospective, Single-Center Cohort Study. *Circulation*. 2020;142(6):611-614. doi:10.1161/CIRCULATIONAHA.120.048925
39. Riphagen S, Gomez X, Gonzalez-Martinez C, Wilkinson N, Theocharis P. Hyperinflammatory shock in children during COVID-19 pandemic. *Lancet*. 2020;395(10237):1607-1608. doi:10.1016/S0140-6736(20)31094-1
40. Liu PP, Blet A, Smyth D, Li H. The Science Underlying COVID-19: Implications for the Cardiovascular System. *Circulation*. 2020;142(1):68-78.

doi:10.1161/CIRCULATIONAHA.120.047549

41. Simpson JM, Newburger JW. Multi-System Inflammatory Syndrome in Children in Association with COVID-19. *Circulation*. Published online June 11, 2020. doi:10.1161/CIRCULATIONAHA.120.048726
42. Nicolai L, Leunig A, Brambs S, et al. Immunothrombotic Dysregulation in COVID-19 Pneumonia Is Associated With Respiratory Failure and Coagulopathy. *Circulation*. 2020;142(12):1176-1189. doi:10.1161/CIRCULATIONAHA.120.048488
43. Most ZM, Hendren N, Drazner MH, Perl TM. The Striking Similarities of Multisystem Inflammatory Syndrome in Children and a Myocarditis-like Syndrome in Adults: Overlapping Manifestations of COVID-19. *Circulation*. Published online August 13, 2020. doi:10.1161/CIRCULATIONAHA.120.050166
44. Chau VQ, Giustino G, Mahmood K, et al. Cardiogenic Shock and Hyperinflammatory Syndrome in Young Males With COVID-19. *Circ Heart Fail*. 2020;13(10):e007485. doi:10.1161/CIRCHEARTFAILURE.120.007485
45. Myhre PL, Prebensen C, Strand H, et al. Growth Differentiation Factor-15 Provides Prognostic Information Superior to Established Cardiovascular and Inflammatory Biomarkers in Unselected Patients Hospitalized with COVID-19. *Circulation*. Published online October 15, 2020. doi:10.1161/CIRCULATIONAHA.120.050360
46. Li X, Pan X, Li Y, et al. Cardiac injury associated with severe disease or ICU admission and death in hospitalized patients with COVID-19: a meta-analysis and systematic review. *Crit Care*. 2020;24(1):468. doi:10.1186/s13054-020-03183-z
47. Allenbach Y, Saadoun D, Maalouf G, et al. Development of a multivariate prediction model of intensive care unit transfer or death: A French prospective cohort study of hospitalized COVID-19 patients. *PLoS One*. 2020;15(10):e0240711. doi:10.1371/journal.pone.0240711
48. Tree JA, Turnbull JE, Buttigieg KR, et al. Unfractionated heparin inhibits live wild-type SARS-CoV-2 cell infectivity at therapeutically relevant concentrations. *Br J Pharmacol*. Published online October 30, 2020. doi:10.1111/bph.15304
49. Tandon R, Sharp JS, Zhang F, et al. Effective Inhibition of SARS-CoV-2 Entry by Heparin and Enoxaparin Derivatives. *J Virol*. Published online November 10, 2020. doi:10.1128/JVI.01987-20
50. Clausen TM, Sandoval DR, Spliid CB, et al. SARS-CoV-2 Infection Depends on Cellular Heparan Sulfate and ACE2. *Cell*. 2020;183(4):1043-1057.e15. doi:10.1016/j.cell.2020.09.033
51. Singh B, Kaur P, Ajdir N, Gupta S, Maroules M. Covid-19 Presenting as Acute Limb Ischemia. *Cureus*. 2020;12(7):e9344. doi:10.7759/cureus.9344
52. Naudin I, Long A, Michel C, Devigne B, Millon A, Della-Schiava N. Acute aorto-iliac occlusion in patient with COVID-19. *J Vasc Surg*. Published online October 16, 2020. doi:10.1016/j.jvs.2020.10.018
53. Bozzani A, Arici V, Tavazzi G, et al. Acute arterial and deep venous thromboembolism in

COVID-19 patients: Risk factors and personalized therapy. *Surgery*. Published online September 22, 2020. doi:10.1016/j.surg.2020.09.009

54. Al-Samkari H, Karp Leaf RS, Dzik WH, et al. COVID-19 and coagulation: bleeding and thrombotic manifestations of SARS-CoV-2 infection. *Blood*. 2020;136(4):489-500. doi:10.1182/blood.2020006520
55. Helms J, Tacquard C, Severac F, et al. High risk of thrombosis in patients with severe SARS-CoV-2 infection: a multicenter prospective cohort study. *Intensive Care Med*. 2020;46(6):1089-1098. doi:10.1007/s00134-020-06062-x
56. Peltzer B, Manocha KK, Ying X, et al. Outcomes and Mortality Associated with Atrial Arrhythmias Among Patients Hospitalized with COVID-19. *J Cardiovasc Electrophysiol*. Published online October 5, 2020. doi:10.1111/jce.14770
57. Lala A, Johnson KW, Januzzi JL, et al. Prevalence and Impact of Myocardial Injury in Patients Hospitalized With COVID-19 Infection. *J Am Coll Cardiol*. 2020;76(5):533-546. doi:10.1016/j.jacc.2020.06.007
58. Gawałko M, Kapłon-Cieślicka A, Hohl M, Dobrev D, Linz D. COVID-19 associated atrial fibrillation: Incidence, putative mechanisms and potential clinical implications. *Int J Cardiol Heart Vasc*. 2020;30:100631. doi:10.1016/j.ijcha.2020.100631
59. Hoerster KD, Lehavot K, Simpson T, McFall M, Reiber G, Nelson KM. Health and health behavior differences: U.S. Military, veteran, and civilian men. *Am J Prev Med*. 2012;43(5):483-489. doi:10.1016/j.amepre.2012.07.029
60. Lehavot K, Hoerster KD, Nelson KM, Jakupcak M, Simpson TL. Health indicators for military, veteran, and civilian women. *Am J Prev Med*. 2012;42(5):473-480. doi:10.1016/j.amepre.2012.01.006
61. RAND Health. *Current and Projected Characteristics and Unique Health Care Needs of the Patient Population Served by the Department of Veterans Affairs*. RAND Corporation; 2015.

Acknowledgements

The VA Medications, Safety, and Effectiveness Collaboratory Workgroup have vetted the study design and statistical approach prior to study approval.

Conflicts of interest

JAB reports consulting with Amgen, Bayer, JanOne, and Janssen. He serves on the Data Safety Monitoring Committee for Novartis. PMH is supported by grants from National Heart, Lung, and Blood Institute, VA Health Services Research & Development, and University of Colorado School of Medicine. He has a research agreement with Bristol-Myers Squibb through the University of Colorado. He serves as the Deputy Editor for Circulation: Cardiovascular Quality and Outcomes. IJD reports grants from UK National Health Service National Institute for Health Research, and has received unrestricted research grants and holds shares in GlaxoSmithKline, outside of the submitted work. All other authors declare no conflicts of interests.

Data sharing

Due to US Department of Veterans Affairs (VA) regulations and our ethics agreements, the analytic data sets used for this study are not permitted to leave the VA firewall without a Data Use Agreement. This limitation is consistent with other studies based on VA data. However, VA data are made freely available to researchers with an approved VA study protocol. For more information, please visit <https://www.virec.research.va.gov> or contact the VA Information Resource Center at VIReC@va.gov.

Funding

This work was supported by the National Institute on Alcohol Abuse and Alcoholism (U01-AA026224, U24-AA020794, U01-AA020790, U10-AA013566), and by the Department of Veterans Affairs Health Services Research & Development (C19 20-405) and Office of Research and Development (MVP000). Funders had no role in the study design, collection, analysis, and interpretation of data; in the writing of the report; and in the decision to submit the article for publication. The views and opinions expressed in this manuscript are those of the authors and do not necessarily represent those of the Department of Veterans Affairs or the United States Government.

Guarantor

CTR and MSF are guarantors.

Contributorship

Contributions are as follows:

Conceptualization: CTR, JB, ACJ, MSF

Data curation: CTR, CA, FK, MS, YH, MFL, JPT

Formal analysis: CTR

Funding acquisition: CTR, DA, ACJ, MSF

Methodology: CTR, JB, LT, WFG, IJD, JPT, SJWE, DA, ACJ, MSF

Project administration: CTR, DA, ACJ, MSF

Resources: CTR, DA, ACJ, MSF

Software: CTR, CA, FK, MS, JPT

Supervision: CTR, JB, DA, ACJ, MSF

Visualization: CTR

Writing (original draft): CTR, JB

Writing (review & editing): CTR, JB, LT, WFG, CA, FK, MS, EB, JTK, YH, SE, SK, MFL, RAG, PMO, PAH, DAJ, IJD, JPT, SJWE, DA, ACJ, MSF