

## Complete mitochondrial genomes of the Arctic charr *Salvelinus alpinus alpinus* Linnaeus (Salmoniformes: Salmonidae)

Alla G. Oleinik<sup>a</sup> , Lubov A. Skurikhina<sup>a</sup>, Andrey D. Kukhlevsky<sup>a,b</sup> and Alexander A. Semenchenko<sup>b</sup>

<sup>a</sup>A.V. Zhirmunsky National Scientific Center of Marine Biology, Far Eastern Branch, Russian Academy of Sciences, Vladivostok, Russia; <sup>b</sup>Far Eastern Federal University, Vladivostok, Russia

### ABSTRACT

The complete mitochondrial genomes were sequenced in three individuals of Arctic charr *Salvelinus alpinus alpinus*. The genome sequences were 16,655 and 16,657 bp in length, and the gene arrangement, composition, and size are very similar to the charr genomes published previously. The difference between the three genomes studied is low, 0.09%. The level of sequence divergence between *S. alpinus alpinus* and *S. alpinus oquassa* inferred from the complete mitochondrial genomes is relatively low (0.36%), indicating recent divergence of the taxa and/or potential historical hybridization between different lineages upon secondary contact.

### ARTICLE HISTORY

Received 24 June 2020  
Accepted 29 June 2020

### KEYWORDS

Charr genus *Salvelinus*;  
Arctic charr; *Salvelinus alpinus*; mtDNA;  
mitogenome



The Arctic charr *Salvelinus alpinus* are salmonid fish distributed throughout the northern circumpolar region and are distinguished by a variability in morphology, coloration, and ecology (Reist et al. 2013). There are several subspecies that were commonly proposed (*S. alpinus alpinus*, *S. alpinus erythrinus*, and *S. alpinus oquassa*) based on their zoogeographic patterns and morphological characteristics. The complete mitochondrial genomes (mitogenomes) of all subspecies of *S. alpinus* have not been established and analyzed in details, and full extent of the evolutionary radiation within the Arctic charr remains unresolved (Oleinik et al. 2015, and references therein). In this study, we examined the mitogenomes of *S. alpinus alpinus* and compared them with charrs from East Asia to North America to assess the phylogeographic patterns of Arctic charr.

We sequenced and described three mitogenomes of *S. alpinus alpinus* from Lake Sitasjaure, Scandinavian Peninsula (67°53'N, 17°37'E). The fish specimens are stored in the collection of the Genetics Laboratory, NSCMB FEB RAS, Vladivostok, Russia ([www.imb.dvo.ru](http://www.imb.dvo.ru)) with accession numbers ARLS04.001, ARLS04.004, and ARLS04.014. Totally five pairs of primers were used, which were designed based on public sequences available in GenBank for salmonid fishes. Mitogenome of *S. alpinus* (GenBank accession number AF154851) from introgressed brook charr of Lake Alain, northeastern Québec, Canada (Doiron et al. 2002), found also in native Arctic charr from that area was included for comparison. Our previous results (Oleinik, Skurikhina, Kukhlevsky,

Bondar 2019) suggest that the mitogenome AF154851 belongs to *S. alpinus oquassa*.

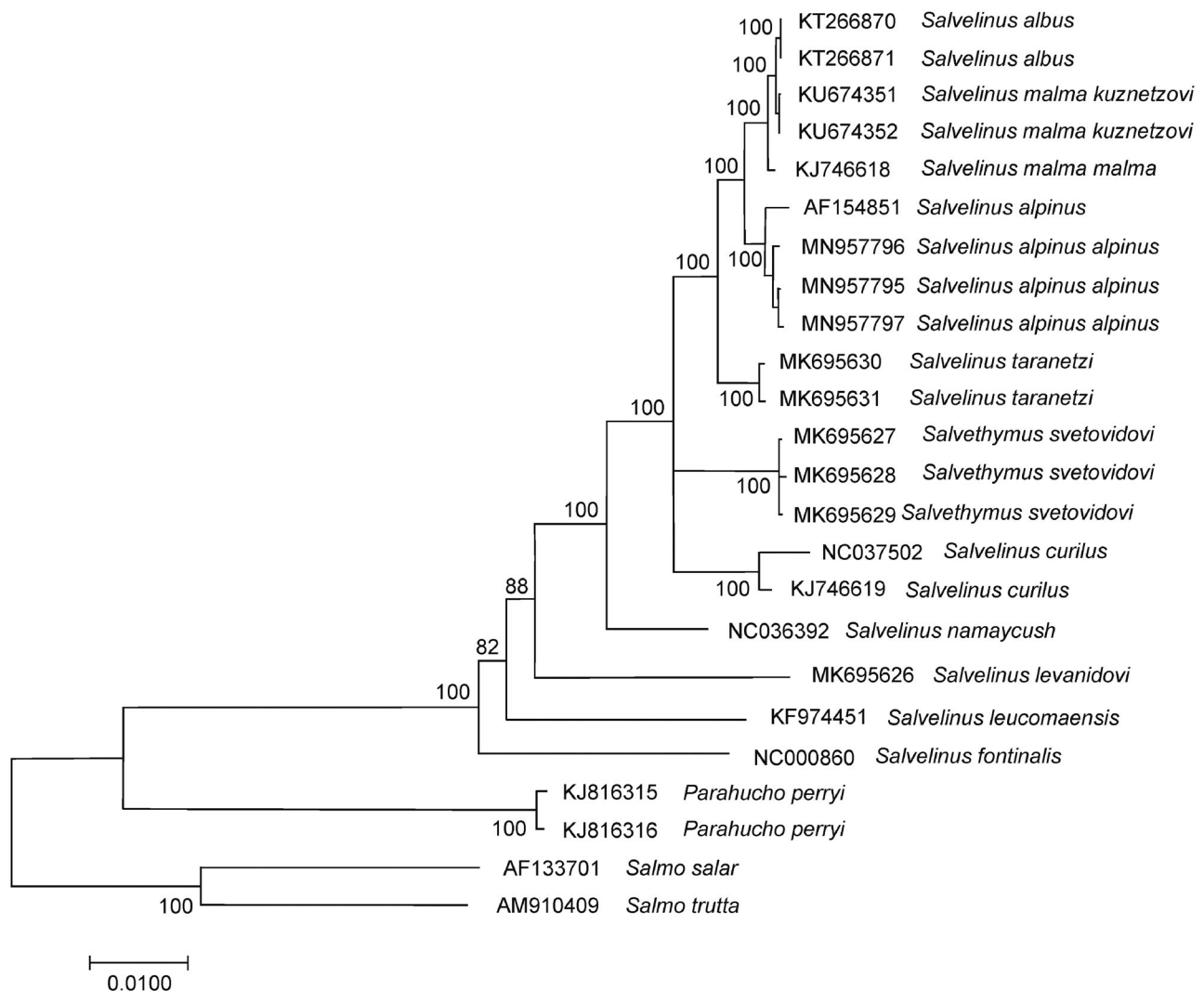
The size of the mitogenomes was 16,655 bp in *S. alpinus alpinus* (MN957796, and MN957797) and 16,657 bp in *S. alpinus alpinus* (MN957795). The genome organization and GC content (45.6%) is consistent with the mitogenomes of charr species (Balakirev et al. 2016; Oleinik, Skurikhina, Kukhlevsky, Semenchenko 2019). We detected 24 single-nucleotide substitutions and one length difference between the sequences *S. alpinus alpinus* (MN957795) and *S. alpinus alpinus* (MN957796, and MN957797). At the same time, there were 73 single nucleotide (in the CR, tRNA, 12S rRNA, 16S rRNA, and protein coding sequences) and one length differences between the *S. alpinus oquassa* and *S. alpinus alpinus* mitogenomes. Protein coding genes had a different degree of variability, but variability of the NADH dehydrogenase subunit genes was the highest (42.6% proportion of all variable sites). The total sequence divergence ( $D_{xy}$ ) was  $0.0009 \pm 0.0003$ .

The comparison of mitogenomes now obtained with 21 mitogenomes of related groups available in GenBank including genera *Salvelinus*, *Parahucho*, and *Salmo* point to the close relationships of *S. alpinus alpinus* to other charr species (Figure 1). *S. alpinus alpinus* mitogenomes studied here showed similar sequence divergence ( $0.0075 \pm 0.0007$  on average) from the GenBank mitogenomes of *S. malma malma*, *S. malma kuznetzovi*, and *S. albus*. These values corresponded to the level of interspecific variability in the genus (Oleinik et al. 2015). The total sequence divergence between *S. alpinus alpinus* and *S. alpinus oquassa* is low,

**CONTACT** Alla G. Oleinik  [alla\\_oleinik@mail.ru](mailto:alla_oleinik@mail.ru)  Genetics Laboratory of A.V. Zhirmunsky National Scientific Center of Marine Biology, Far Eastern Branch, Russian Academy of Sciences, 17 Palchevskogo St., Vladivostok 690041, Russia

© 2020 The Author(s). Published by Informa UK Limited, trading as Taylor & Francis Group.

This is an Open Access article distributed under the terms of the Creative Commons Attribution License (<http://creativecommons.org/licenses/by/4.0/>), which permits unrestricted use, distribution, and reproduction in any medium, provided the original work is properly cited.



**Figure 1.** Maximum likelihood (ML) tree constructed on the comparison of complete mitochondrial genome sequences of *Salvelinus alpinus alpinus* and other GenBank representatives of the family Salmonidae. The tree is based on the GTR plus gamma plus invariant sites (GTR+G+I) model of nucleotide substitution. Genbank accession numbers for all sequences are listed in the figure. Numbers at the nodes indicate bootstrap probabilities from 1000 replications (values below 80% are omitted). Phylogenetic analysis was conducted in MEGA X (Kumar et al. 2018).

0.0036±0.0004. The differences between two divergent mtDNA lineages show recent divergence and/or potential historical hybridization between different lineages upon secondary contact (Moore et al. 2015).

### Disclosure statement

No potential conflict of interest was reported by the author(s). The research on mitochondrial genome sequencing was conducted at the School of Natural Sciences, Far Eastern Federal University, Vladivostok, Russia. The data analysis and manuscript preparation were conducted at the A.V. Zhirmunsky National Scientific Center of Marine Biology, Vladivostok, Russia.

### Funding

The study was supported by the Russian Science Foundation, Russia [grant number 20-04-00205].

### ORCID

Alla G. Oleinik  <http://orcid.org/0000-0003-4790-0578>

### Data availability statement

The data that support the findings of this study are openly available in the National Center for Biotechnology Information database (NCBI/GenBank) at <https://https.ncbi.nlm.nih.gov/>, reference numbers MN957795, MN957796, and MN957797.

### References

- Balakirev ES, Parensky VA, Kovalev MYu, Ayala FJ. 2016. Complete mitochondrial genome of the stone char *Salvelinus kuznetzovi* (Salmoniformes, Salmonidae). Mitochondr DNA (Part B). 1(1):287–288.
- Doiron S, Bernatchez L, Blier P. 2002. A comparative mitogenomic analysis of the potential adaptive value of Arctic charr mtDNA introgression in brook charr populations (*Salvelinus fontinalis* Mitchell). Mol Biol Evol. 19(11):1902–1909.

- Kumar S, Stecher G, Li M, Knyaz C, Tamura K. 2018. MEGA X: molecular evolutionary genetics analysis across computing platforms. *Mol Biol Evol.* 35(6):1547–1549.
- Moore J-S, Robert BR, Reist JD, Taylor EB. 2015. Post-glacial recolonization of the north American Arctic by Arctic charr (*Salvelinus alpinus*): genetic evidence of multiple northern refugia and hybridization between glacial lineages. *J Biogeogr.* 42(11): 2089–2100.
- Oleinik AG, Skurikhina LA, Brykov VA. 2015. Phylogeny of charrs of the genus *Salvelinus* based on mitochondrial DNA data. *Russ J Genet.* 51(1):55–68.
- Oleinik AG, Skurikhina LA, Kukhlevsky AD, Bondar EI. 2019. On the origin of endemic stone charr in the Kamchatka River Basin. *Hydrobiologia.* 840(1):21–33.
- Oleinik AG, Skurikhina LA, Kukhlevsky AD, Semenchenko AA. 2019. First report of three complete mitochondrial genomes of the long-finned charr *Salvelinus svetovidovi* Chershev et Skopetz, 1990 (Salmoniformes: Salmonidae) with phylogenetic consideration. *Mitochondr DNA (Part B).* 4(2):2464–2466.
- Reist JD, Power M, Dempson B. 2013. Arctic charr (*Salvelinus alpinus*): a case study of the importance of understanding biodiversity and taxonomic issues in northern fishes. *Biodiversity.* 14(1):45–56.