



# Frequency-Specific Changes in the Fractional Amplitude of the Low-Frequency Fluctuations in the Default Mode Network in Medication-Free Patients With Bipolar II Depression: A Longitudinal Functional MRI Study

## OPEN ACCESS

### Edited by:

Joaquim Radua,  
Institut de Recerca Biomèdica August  
Pi i Sunyer (IDIBAPS), Spain

### Reviewed by:

Ruiyang Ge,  
University of British Columbia, Canada  
Ning Sun,  
First Hospital of Shanxi Medical  
University, China  
Kerang Zhang,  
First Hospital of Shanxi Medical  
University, China

### \*Correspondence:

Ying He  
yinghe@csu.edu.cn  
Xiaogang Chen  
chenxiaogang@csu.edu.cn

### Specialty section:

This article was submitted to  
Mood and Anxiety Disorders,  
a section of the journal  
Frontiers in Psychiatry

**Received:** 21 June 2020

**Accepted:** 24 November 2020

**Published:** 08 January 2021

### Citation:

Zhou J, Ma X, Li C, Liao A, Yang Z,  
Ren H, Tang J, Li J, Li Z, He Y and  
Chen X (2021) Frequency-Specific  
Changes in the Fractional Amplitude  
of the Low-Frequency Fluctuations in  
the Default Mode Network in  
Medication-Free Patients With Bipolar  
II Depression: A Longitudinal  
Functional MRI Study.  
Front. Psychiatry 11:574819.  
doi: 10.3389/fpsy.2020.574819

Jun Zhou<sup>1,2,3,4,5</sup>, Xiaojian Ma<sup>1,2,3,4,5</sup>, Chunwang Li<sup>6</sup>, Aijun Liao<sup>1,2,3,4,5</sup>, Zihao Yang<sup>1,2,3,4,5</sup>,  
Honghong Ren<sup>1,2,3,4,5</sup>, Jinsong Tang<sup>7</sup>, Jinguang Li<sup>1,2,3,4,5</sup>, Zongchang Li<sup>1,2,3,4,5</sup>, Ying He<sup>1,2,3,4,5\*</sup>  
and Xiaogang Chen<sup>1,2,3,4,5\*</sup>

<sup>1</sup> Department of Psychiatry, The Second Xiangya Hospital, Central South University, Changsha, China, <sup>2</sup> National Clinical Research Center for Mental Disorders, Changsha, China, <sup>3</sup> National Technology Institute on Mental Disorders, Changsha, China, <sup>4</sup> Hunan Key Laboratory of Psychiatry and Mental Health, Changsha, China, <sup>5</sup> Mental Health Institute of Central South University, Changsha, China, <sup>6</sup> Department of Radiology, Hunan Children's Hospital, Changsha, China, <sup>7</sup> Department of Psychiatry, Sir Run Run Shaw Hospital, Zhejiang University, Hangzhou, China

**Objective:** This study aimed to examine the treatment-related changes of the fractional amplitude of low-frequency fluctuations (fALFF) in the default mode network (DMN) across different bands after the medication-free patients with bipolar II depression received a 16-week treatment of escitalopram and lithium.

**Methods:** A total of 23 medication-free patients with bipolar II depression and 29 healthy controls (HCs) were recruited. We evaluated the fALFF values of slow 4 (0.027–0.073 Hz) band and slow 5 (0.01–0.027 Hz) band of the patients and compared the results with those of the 29 HCs at baseline. After 16-week treatment of escitalopram with lithium, the slow 4 and slow 5 fALFF values of the patients were assessed and compared with the baselines of patients and HCs. The depressive symptoms of bipolar II depression in patients were assessed with a 17-item Hamilton Depression Rating Scale (HDRS) before and after treatment.

**Results:** Treatment-related effects showed increased slow 5 fALFF in cluster D (bilateral medial superior frontal gyrus, bilateral superior frontal gyrus, right middle frontal gyrus, and bilateral anterior cingulate), cluster E (bilateral precuneus/posterior cingulate, left cuneus), and cluster F (left angular, left middle temporal gyrus, left superior temporal gyrus, and left supramarginal gyrus) in comparison with the baseline of the patients. Moreover, a positive association was found between the increase in slow 5 fALFF values (follow-up value minus the baseline values) in cluster D and the decrease in HDRS scores (baseline HDRS scores minus follow-up HDRS scores) at follow-up, and the same association between the increase in slow 5 fALFF values and the decrease in HDRS scores was found in cluster E.

**Conclusions:** The study reveals that the hypoactivity of slow 5 fALFF in the DMN is related to depression symptoms and might be corrected by the administration of escitalopram with lithium, implying that slow 5 fALFF of the DMN plays a key role in bipolar depression.

**Keywords:** fractional amplitude of low-frequency fluctuations, bipolar depression, resting state functional magnetic resonance imaging, default-mode Network, escitalopram, lithium

## INTRODUCTION

Depression is the most common manifestation of mood state in bipolar disorder II, which is responsible for high suicide rates (1) and significant functional impairment (2). The treatment effect of bipolar depression is closely related to its prognosis. Medication therapy is the most common treatment for bipolar II depression, and although the functional and structural abnormalities of this disease are revealed by a large number of MRI results (3, 4), how the brain can be modulated by medication therapy and the corresponding changes from the neuroimaging perspective remains unclear.

The amplitude of low-frequency fluctuations (ALFF) is an index of local spontaneous neural activity in the resting state (5, 6) and reflects regional energy metabolism and activity of chemical synaptic signaling in the brain. The ratio of the power spectrum of low frequency to that of the entire frequency range is defined as the fractional amplitude of low-frequency fluctuations (fALFF). Compared with ALFF, fALFF can suppress non-specific signal components in fMRI and is more sensitive and specific to the detection of spontaneous brain activities (7). Recently, fALFF has been used in investigating neurobiological mechanisms and treatment effects in various psychiatric disorders [e.g., schizophrenia (8) and panic disorder (9)]. Several cross-sectional whole-brain fALFF studies on bipolar depression have suggested that when compared with healthy controls (HCs), patients showed aberrant fALFF in the superior frontal gyrus (SFG) (10, 11) and precuneus (PCu) (12), which belong to the default mode network (DMN). Treatment-related changes of escitalopram in fALFF were observed in patients with panic disorder (9) and major depression (13), and the changed brain region, including the medial prefrontal cortex (mPFC), was located in the DMN. However, treatment-related changes of fALFF within the DMN on bipolar II depression still remain elusive.

Although low-frequency oscillations (LFO) ranging from 0.01 to 0.25 Hz are physiologically relevant and related to neuronal fluctuations, researchers found that LFOs with a range of 0.01–0.073 Hz (slow 4: 0.027–0.073 Hz, slow 5: 0.01–0.027 Hz) often embody the spontaneous activities of neurons in the gray matter and LFOs with a range of 0.073–0.025 Hz (slow 3: 0.073–0.198 Hz; slow 2: 0.198–0.25 Hz) are often detected within the white matter (14, 15). Thus, fALFF with 0.01–0.08 Hz frequencies is often explored in the gray matter study of mental illness (16, 17). Recent research further reported that the cortex and subcortical nuclei signal different bands in slow 4 and slow 5. Slow 4 is the most robust in the subcortical nuclei, such as the basal ganglia, and the strongest signal of slow 5 is found in the cortex, such as the mPFC in healthy people (15). Based on these

findings, slow 5 and slow 4 fALFF have been used in exploring some psychiatric diseases, such as mild cognitive impairment with mild depression (18), chronic primary insomnia (19), and post-stroke depression (20) to improve precision. One cross-sectional study displayed different results in slow 5 and slow 4 fALFF in psychotic bipolar disorder (21), suggesting that the medication-related changes in fALFF in bipolar II depression may also lead to different results in slow 4 and slow 5.

The DMN consists of the mPFC, PCC/PCu, inferior parietal lobule (IPL), and lateral temporal cortex (LTC) (22, 23). The DMN plays an important role in emotion formation and processing, self-referential processing, and emotional appraisal (24, 25). Previous studies identified aberrant functional connectivity within and between DMN nodes (26–29) in patients with bipolar or unipolar depression. This finding might prove that a correlation exists between the DMN and the pathogenesis of depression. As for the medication-related changes in the DMN, some studies have been conducted on individuals with major depressive disorder (30, 31) and healthy people (32), which revealed that antidepressants changed the functional connectivity (30) and network flexibility (31) of the DMN. However, the role of the DMN in the treatment effects of bipolar II depression remains unclear.

Some issues arising from the above discussion need to be addressed. First, the fALFF change across different bands within the DMN when patients with bipolar II depression achieve remission through medicine therapy remains unclear. Second, in case that some fALFF changes in the DMN after treatment appear, the relation between these changes and depressive symptoms is unknown. Third, changes that occur in the different frequency bands of fALFF within the DMN are unknown.

Therefore, we carried out a longitudinal fMRI research on medication-free patients with bipolar II depression to understand fALFF changes across different frequencies after a 16-week treatment course with escitalopram and lithium.

We hypothesized that (1) treatment with escitalopram and lithium affects the fALFF in the DMN in bipolar II depression patients, (2) a correlation exists between the change in fALFF in the DMN and depression symptoms in bipolar II depression, and (3) fALFF changes across different bands within the DMN are different.

## MATERIALS AND METHODS

### Subjects

Our research was conducted in line with the Declaration of Helsinki and approved by the Ethics Committee of the Second Xiangya Hospital of Central South University (approval number:

2019/004). Before the research, we explained the purpose and procedure of the study to all the participants or the participants' legal guardian and notified them that they could opt out any time.

Bipolar II disorder was diagnosed by two senior psychiatrists (Chen X.G, Tang J.S). Patients who met the following criteria were selected: (1) met the DSM-V (33) criteria for bipolar II disorder, were currently depressed, and scored  $>17$  in the 17-item Hamilton Depression Rating Scale (HDRS) (34) and  $<7$  in the Young Mania Rating Scale (YMRS) (35); (2) medication-free; and (3) between 16 and 40 years of age. We set the age criteria mainly because of the high incidence in the range (36) and to exclude brain aging as a confounding factor (37). HCs without history of psychiatric or neurological disease were recruited from the local community through advertisements and matched with patients in terms of age, education, and gender. All the participants were Han Chinese and right-handed. The exclusion criteria for all the subjects were as follows: (1) severe head trauma with loss of consciousness lasting more than 5 min, (2) any neurological disorder or other chronic somatic diseases, (3) alcohol or drug abuse, (4) history of a psychiatric disease or receiving antipsychotic treatments, and (5) any contraindication to MRI.

All the participants underwent functional MRI scans at baseline. The patients then received a 16-week treatment course that consisted of administration of escitalopram ( $12.50 \pm 4.20$  mg, daily) and lithium ( $793.48 \pm 144.05$  mg, daily). Treatment regimen and duration were based on CANMAT guidelines for the management of patients with bipolar disorder (2013) (38), a previous study (39), and our clinical experiences with bipolar II depression. After the 16-week treatment course, the patients were scheduled for follow-up fMRI scans. Patients with YMRS and HDRS scores of  $\leq 7$  were classified as remission status.

Twenty-eight medication-free patients with bipolar II depression were recruited from the outpatient clinic of the Department of Psychiatry at Second Xiangya Hospital, China.

One patient's fMRI data at baseline were excluded because of excessive head movement during the MRI scan; three patients' escitalopram with lithium treatment was transformed. Among these three, two patients presented with persistent side effects, such as nausea, sedation, and vomiting, and the other patient had no significant response. One patient refused to perform follow-up MRI scan because of discomfort during the test. Finally, 52 participants were included, 23 of whom were medication-free patients with bipolar II depression and 29 were HCs.

## Clinical and Neuropsychological Measurements

All bipolar II depression patients ( $n = 23$ ) were evaluated at baseline and followed up with 17-item HDRS and YMRS. To ensure consistency and reliability of the ratings, two psychiatrists with over 5 years of clinical practice received a training session on how to use the HDRS and YMRS before the study was conducted. This procedure ensured that a correlation coefficient  $>0.8$  was maintained over repeated assessments across the study.

## Image Acquisition

All MRI data were acquired using a 3T scanner (Siemens, Skyra, Germany) in Hunan Children's Hospital. Before the scan, we instructed all the subjects to stop moving and thinking of anything and to relax with eyes closed but not to fall asleep throughout the scan. Foam paddings were wrapped around the head to reduce head motion, and earplugs were used to attenuate scanner noise.

Sequence parameters were as follows: 36 slices; repetition time (TR)/echo time (TE) = 2,000/30 ms; flip angle (FA) =  $90^\circ$ ; voxel size =  $3.4 \times 3.4 \times 3.4$  mm<sup>3</sup>; field of view (FOV) =  $256 \times 256$  mm; and slice thickness = 3.4 mm. Each functional run consisted of 250 volumes and lasted for  $\sim 508$  s. High-resolution T1-weighted three-dimensional structural images were acquired using a high-resolution sequence: 192 slices; TR/TE = 2,530/2.33 ms; voxel size =  $1 \times 1 \times 1$  mm<sup>3</sup>; FOV =  $256 \times 256$  mm; flip angle (FA) =  $7^\circ$ ; and slice thickness = 1 mm.

## Data Pre-processing

Data pre-processing was conducted with Data Processing Assistant for Resting-State fMRI (DPARSF, <http://www.restfmri.net>) (40), which is based on Statistical Parametric Mapping (SPM, <https://www.fil.ion.ucl.ac.uk/spm/>). The first 10 time points were removed for the reduction of the non-equilibrium effects of magnetization. The remaining 240 scans of each participant underwent slice timing, realignment, co-registration with the participants' own structural images, and segmentation. Then, the resulting images were normalized spatially with the standard Montreal Neurological Institute (MNI) EPI template in DARTEL and resampled to  $3 \times 3 \times 3$  mm<sup>3</sup>. Any participant with head motion of  $>1.5$  mm translation or  $>1.5^\circ$  rotation in any direction and mean FD Jenkinson of  $>0.2$  mm was removed (41). No significant differences between the patients with bipolar II depression and HC were observed at baseline ( $t = -0.626$ ,  $p = 0.534$ ) and before and after treatment ( $t = 0.502$ ,  $p = 0.621$ ) in mean framewise displacement (FD Jenkinson). For the reduction of physiological noises, such as heartbeat and respirations, the signals of the white matter and cerebrospinal fluid and the 24 parameters of head motion (42) were regressed from the data. Furthermore, we performed scrubbing procedure (43) to eliminate the distance-dependent artifact of head motion. Adopting a 2–3-voxel FWHM in the smoothing process can produce objective results (44). Thus, we used a 6-mm Gaussian kernel to smoothen the generated images. Finally, detrending was performed for the elimination of the linear drift. We also performed the regression of global signals analysis to process the data (the detailed results shown in the **Supplementary Material**).

## Calculation of fALFF

fALFF analysis was performed with the DPARSF software. We computed fALFF values based on the method of previous studies (7, 18). The previous study demonstrated that the full fALFF frequency range (0.01–0.25 Hz) encompasses four bands: slow 5 (0.01–0.027 Hz), slow 4 (0.027–0.073 Hz), slow 3 (0.073–0.198 Hz), and slow 2 (0.198–0.25 Hz) (45). The fALFF of the slow 5 and slow 4 bands were calculated in our study.

Firstly, we calculated the fALFF values of the slow 5, and we set the bands with 0.01–0.027 Hz; then, we set the bands with 0.027–0.073 in the DPARSF to calculate the slow 4 fALFF values.

## Statistical Analysis

The fALFF maps were estimated within the regions of the DMN template built in the GIFT toolbox (46). By subtracting the mean from the value of each voxel of the raw fALFF and then dividing by the standard deviation, we obtain a Z-standardized fALFF map of participants for the following statistical analysis. Voxel-wise independent two-sample *t*-test and paired *t*-tests in SPM8 were employed to compare the difference of fALFF between the patients and controls as well as before and after treatment in bipolar II depression patients, respectively. Age, gender, and educational years were considered covariates. Family-wise error (FWE) correction was utilized for multiple comparisons with a significance threshold of  $<0.025$  and cluster size (CZ) of 100.

To examine the associations between the fALFF values and depressive symptoms, fALFF values in the baseline and follow-up patient groups were acquired from abnormal brain regions. Firstly, we picked every abnormal cluster as images, respectively; then, the fALFF values of every subject were calculated with “ROI signal of extractor” of DPARSF with this image as masks. In addition, the longitudinal changes in fALFF values (follow-up value minus baseline values) and decreased HDRS (baseline HDRS scores minus follow-up HDRS scores) were identified as changes in brain activity and clinical symptoms, respectively. Spearman correlation analysis was used in computing the correlation between the fALFF values and HDRS scores at baseline and between the changes in fALFF values and decreased HDRS scores.

Given that two comparisons (patients vs. controls at baseline, baseline patients vs. after-treatment patients) and four brain regions were included, for correlation analysis, the Bonferroni correction  $p < 0.006$  (four regions, two stages,  $p < 0.05/4 \times 2$ ).

Clinical and demographic data were performed with SPSS (version 17.0). Mann–Whitney *U*-test was used in comparing differences between the patients and HCs in terms of age, marital status, and years of education. Differences in terms of gender and tobacco use were assessed using chi-square tests. In addition, to analyze the patients’ longitudinal changes of HDRS, the Wilcoxon test was used. These statistical tests were two-tailed, and a *p*-value of  $<0.05$  was considered statistically significant.

## RESULTS

### Demographic and Clinical Characteristics

A total of 52 participants were included, comprising 23 medication-free patients with bipolar II depression and 29 HCs. The demographic and clinical characteristics of the patients and HCs are shown in **Table 1**. The two groups did not differ significantly in terms of gender ( $p = 0.829$ ), age ( $p = 0.934$ ), tobacco use ( $p = 0.764$ ), marital status ( $p = 0.577$ ), and years of education ( $p = 0.118$ ).

**TABLE 1** | Demographic and clinical characteristics of medication-free patients with bipolar II depression and HCs.

Variables	Bipolar II depression (N = 23)	HCs (N = 29)	$\chi^2/Z$	<i>p</i> -value
Gender—male/female, case	12/11	13/16	0.046	0.829 <sup>a</sup>
Married (married/living as married)/non-married (widowed, divorced, separated, single), case	8/15	8/21	0.312	0.577 <sup>a</sup>
Age—median (range), years	19 (16–39)	21 (15–32)	−0.083	0.934 <sup>b</sup>
Education duration—median (range), years	14 (9–19)	14 (9–16)	−1.562	0.118 <sup>b</sup>
Tobacco use—case	4	6	0.090	0.764 <sup>a</sup>
Duration of illness—median (range), months	12 (1–96)	/	/	/
Number of depressive episodes—median (range), times	2 (0–8)	/	/	/
Number of hypomania episodes—median (range), times	1 (1–8)	/	/	/
Age of onset—median (range), years	16 (10–38)	/	/	/

HCs, healthy controls.

<sup>a</sup>The *p*-values for sex distribution, marital status, and tobacco use were obtained by chi-square-tests.

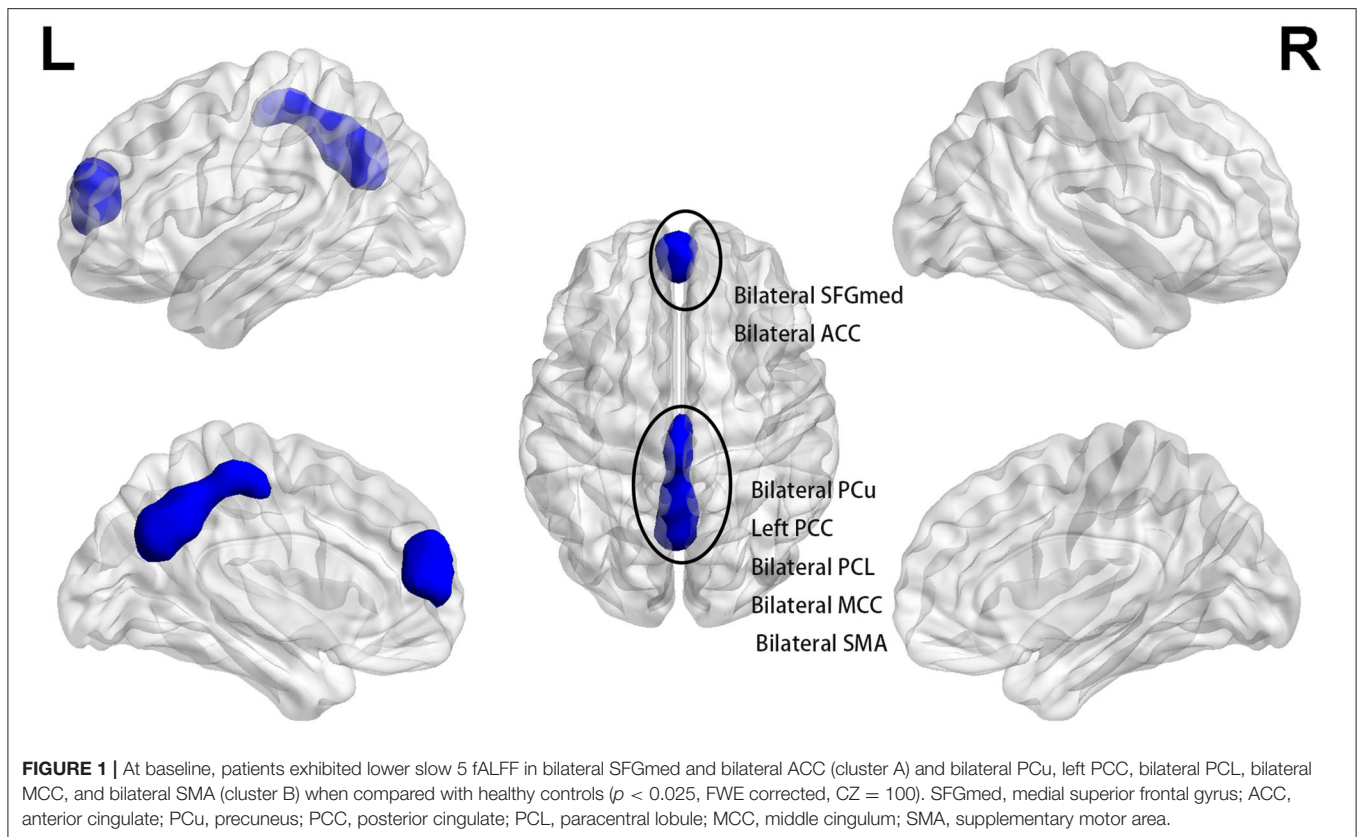
<sup>b</sup>The *p*-value was obtained by the Mann–Whitney *U*-test applied.

### Baseline and Longitudinal Changes in fALFF

At baseline, the patients displayed significantly lower fALFF values in clusters A and B than those of HCs in slow 5 band ( $p < 0.025$ , FWE corrected, CZ = 100). Cluster A included the bilateral medial SFG and bilateral anterior cingulate (ACC), and cluster B included bilateral PCu, left PCC, bilateral paracentral lobule, bilateral middle cingulum, and bilateral supplementary motor area ( $p < 0.025$ , FWE corrected, CZ = 100) (**Figure 1** and **Table 2**). We also found that the patients had higher slow 5 fALFF values in cluster C (left caudate) than the HCs ( $p < 0.025$ , FWE corrected, CZ = 100) (**Figure 2** and **Table 2**). However, no significant difference between the patients and HCs in the slow 4 band was observed ( $p < 0.025$ , FWE corrected, CZ = 100; **Table 2**).

After the 16-week treatment, fALFF increased in clusters D, E, and F compared with the baseline in the slow 5 band ( $p < 0.025$ , FWE corrected, CZ = 100; **Figure 3** and **Table 2**). Cluster D included the bilateral medial SFG, bilateral SFG, bilateral ACC, and right middle frontal gyrus, and cluster E included the bilateral PCu, bilateral PCC, and left cuneus. Cluster F included the left angular gyrus, left middle temporal gyrus (MTG), left superior temporal gyrus (STG), and left supramarginal gyrus (SMG). None of the regions demonstrated decreased fALFF after treatment. There was no significant difference in slow 4 fALFF in the patients after treatment ( $p < 0.025$ , FWE corrected, CZ = 100; **Table 2**).





After the 16-week treatment, no significant differences between the patients and HC were observed ( $p < 0.025$ , FWE corrected,  $CZ = 100$ ) in the slow 5 and slow 4 bands (Table 2).

## Longitudinal Alterations of Clinical Symptoms

The median (range) of the HDRS is 23 (29, 19) at baseline. After the 16-week treatment course, the HDRS was reduced to 3 (6, 0). HDRS decreased to 21 (26, 13). The Wilcoxon test revealed that the HDRS scores of patients were significantly higher than those of patients in the medication-free phase ( $Z = -4.202$ ,  $p = 0.000$ ). The median (range) of YMRS in the patients was 3 (4, 0) and 2 (3, 0) at baseline and follow-up, respectively.

## Relationships of Baseline and Longitudinal Alterations of fALFF and Clinical Variables

### Relationships of Baseline and Longitudinal Alterations of fALFF and HDRS Scores

The baseline HDRS score was negatively correlated with the slow 5 fALFF of cluster A ( $r = -0.549$ ,  $p = 0.000$ ) at baseline (Figure 4). No correlation between the baseline of HDRS and cluster B ( $r = -0.509$ ,  $p = 0.013$ ) as well as cluster C ( $r = 0.094$ ,  $p = 0.669$ ) was found. The decrease in HDRS scores (baseline HDRS scores minus follow-up HDRS scores) was positively correlated with the increased values in slow 5 fALFF (follow-up minus baseline) in cluster D ( $r = 0.782$ ,  $p = 0.000$ ) and cluster E ( $r = 0.606$ ,  $p = 0.002$ ) at follow-up (Figure 4). No correlation

between the decreases in HDRS scores and the increased values in slow 5 fALFF was found ( $r = 0.311$ ,  $p = 0.149$ ) in cluster F.

### Relationships of Baseline fALFF and Other Clinical Variables

No correlation between the duration of illness and the slow 5 fALFF values in cluster A ( $r = -0.293$ ,  $p = 0.174$ ), cluster B ( $r = 0.259$ ,  $p = 0.233$ ), and cluster C ( $r = -0.090$ ,  $p = 0.683$ ) was found, respectively. Also, there was no correlation between the age of onset and the slow 5 fALFF values in cluster A ( $r = 0.142$ ,  $p = 0.517$ ), cluster B ( $r = -0.137$ ,  $p = 0.534$ ), and cluster C ( $r = 0.159$ ,  $p = 0.470$ ) respectively.

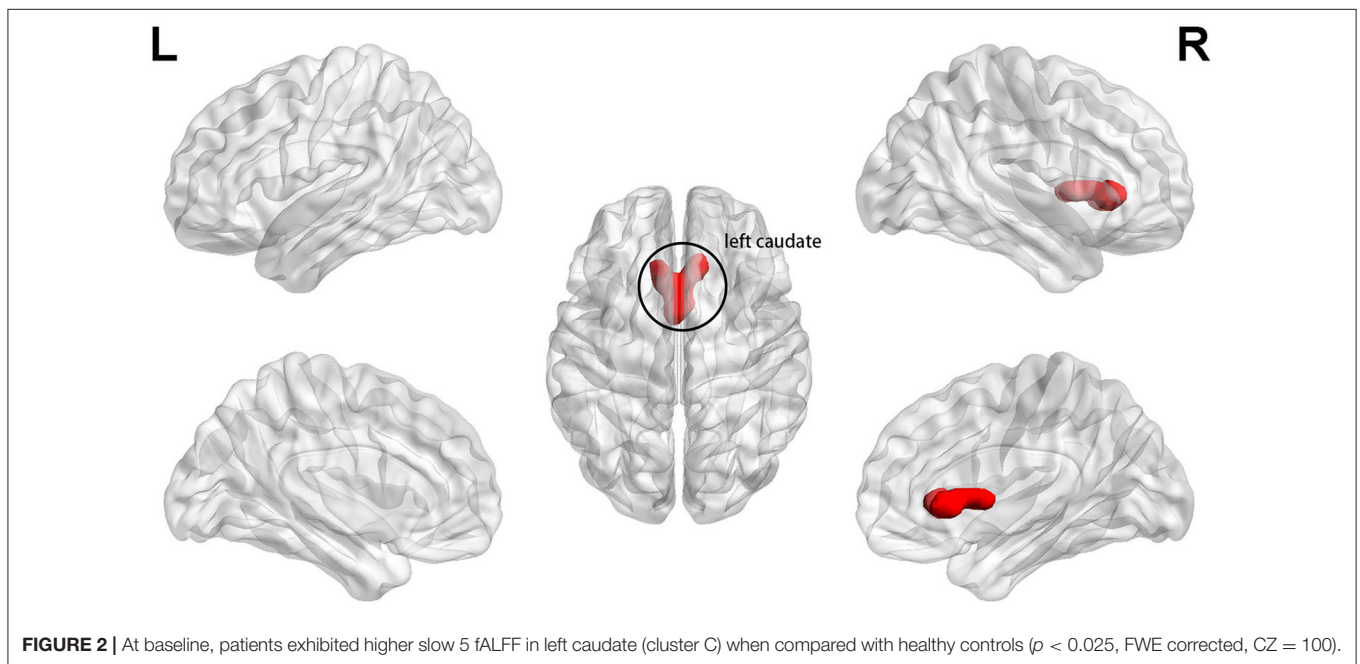
## DISCUSSION

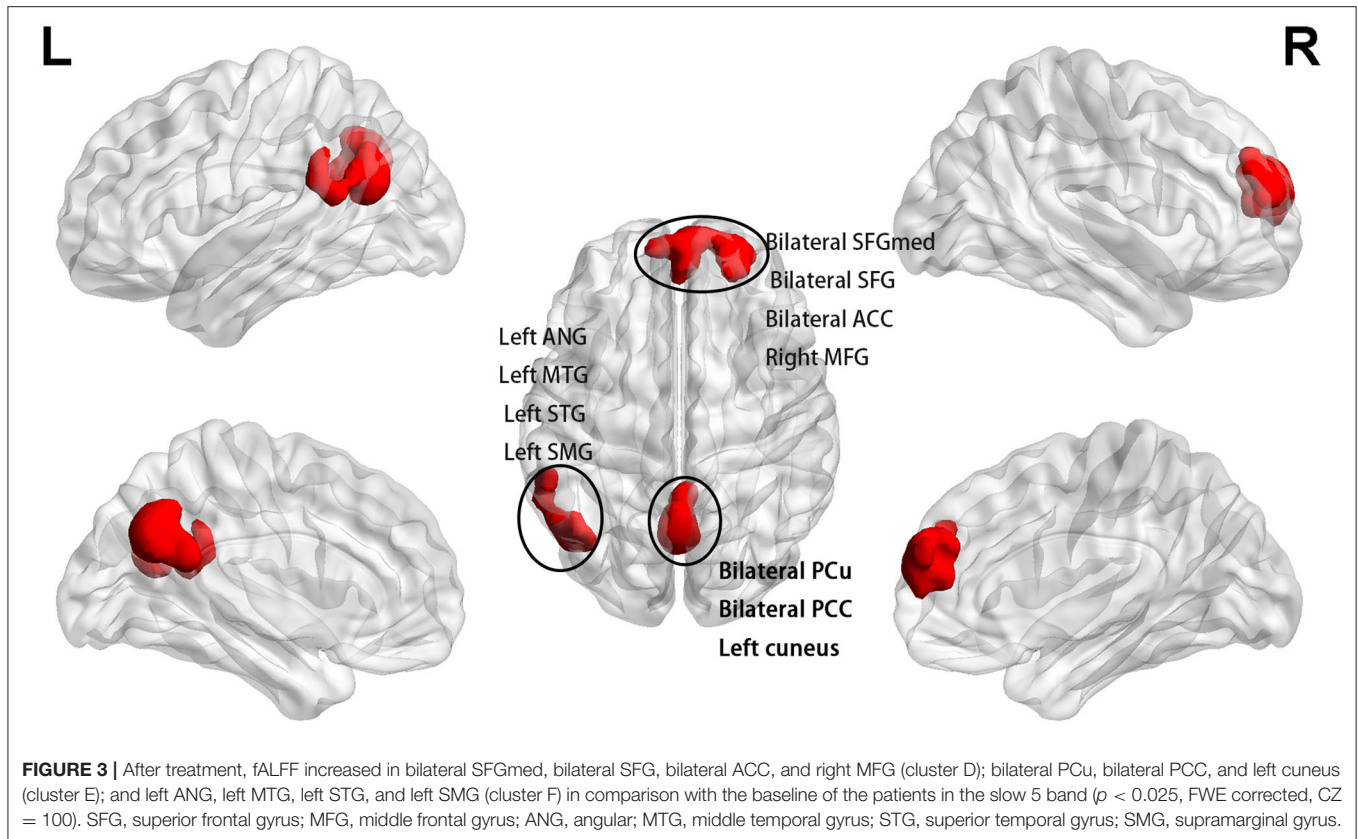
In the study, we explore treatment-related changes in fALFF within the DMN in patients with bipolar II depression who received a 16-week treatment course of escitalopram and lithium. The results confirm our hypothesis that treatment-related change in fALFF in the DMN can be corrected by escitalopram with lithium in patients with bipolar II depression. A correlation was observed between the change in fALFF in the DMN and depression symptoms in patients with bipolar II depression. fALFF changes across different bands within the DMN were different.

First, we will discuss the possible reasons for the increase in fALFF and reduced depressive symptoms after the treatment

**TABLE 2** | Baseline and longitudinal alterations of fALFF in bipolar II depression patients.

Cluster	Brain region	Brodmann area	MNI coordinates			Voxels	Peak <i>T</i> -value	<i>p</i> (FWE corrected)
			X	Y	Z			
<b>Patients at baseline vs. controls</b>								
<b>0.01–0.027 band (slow 5 band)</b>								
Cluster A	Bilateral medial superior frontal gyrus Bilateral anterior cingulate	9/10/32	–3	48	15	181	–8.8003	<0.025
Cluster B	Bilateral precuneus Left posterior cingulate Bilateral paracentral lobule Bilateral middle cingulum Bilateral supplementary motor area	5/6/7/31	0	–54	45	536	–10.4495	<0.025
Cluster C	Left caudate	24	–3	15	6	128	9.3419	<0.025
0.027–0.073 band (slow 4 band)								
None								
<b>Patients at follow-up vs. baseline</b>								
<b>0.01–0.027 band (slow 5 band)</b>								
Cluster D	Bilateral medial superior frontal gyrus Bilateral superior frontal gyrus Bilateral anterior cingulate Right middle frontal gyrus	9/10	24	54	24	344	17.0949	<0.025
Cluster E	Bilateral precuneus Bilateral posterior cingulate Left cuneus	7/31	0	–66	33	181	13.0121	<0.025
Cluster F	Left angular Left middle temporal gyrus Left superior temporal gyrus Left supramarginal gyrus	39/40	–42	66	21	138	11.1745	<0.025
0.027–0.073 band (slow 4 band)								
None								
<b>Patients at follow-up vs. HC</b>								
<b>0.01–0.027 band (slow 5 band)</b>								
None								
<b>0.027–0.073 (slow 4 band)</b>								
None								





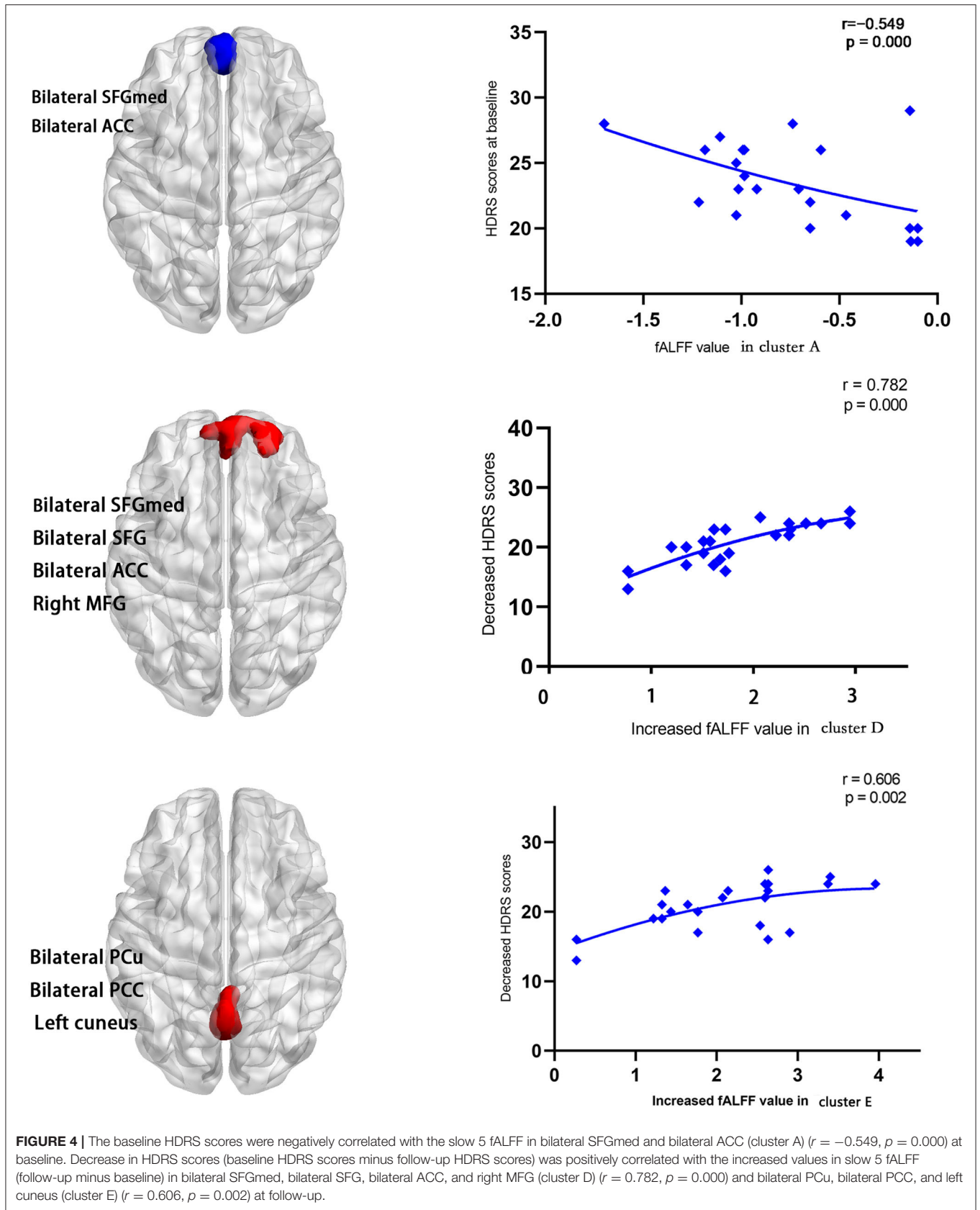
of bipolar II depression with escitalopram and lithium. Escitalopram is a selective serotonin reuptake inhibitor (SSRI) that increases serotonergic activity in the central nervous system by inhibiting 5-HT reuptake (47). Previous studies showed that serotonin (5-HT) has a role in long-term memory regulation (48, 49) and emotional regulation (50), and this role might be related to the pathogenesis of depression. The effective treatment of SSRI is related to the increase in circulation in 5-HT (51) and the concentration of 5-hydroxytryptamine in the serotonergic system including the prefrontal cortical area (52). A previous study has suggested that serotonergic effects on neurophysiology mainly occur at synaptic connection sites (53). When patients receive escitalopram treatment, changes in synaptic connections may be a cause of changes in spontaneous brain activity (54). As in our findings, one study reported escitalopram increased brain activities in the mPFC, LTC, and cuneus (55). Another research demonstrated the presence of a relationship between serotonin transporter occupancy and DMN connectivity (56). Serotonergic neurotransmitter system might play a role in modulating the spontaneous activity of the DMN and alleviating depression during escitalopram treatment.

Lithium is another medication used in our treatment program; it is effective in treating bipolar depression (57, 58). The several mechanisms of lithium, such as neurotransmitters, neuronal plasticity, and energy metabolism, possibly play a role in its therapeutic effects (59). Lithium may function in the prefrontal (60) and cingulate cortices (61) by regulating synaptic activity

and energy metabolism. Synaptic activity and energy metabolism might be related to change in spontaneous brain activity. However, Vargas et al. (62) found that lithium has no effect on brain activation in euthymic patients with type I bipolar disorder. The reason for this difference may include the state of disease, study design, and sample size (only including 10 cases taking lithium). Given the inconsistent result, the change in the DMN by lithium in bipolar II depression needs further confirmation.

In our study, changes in fALFF after treatment with lithium and escitalopram in the DMN mainly occurred in the mPFC (bilateral medial SFG, bilateral ACC), PCU/PCC, left LTC (left MTG, left STG), and left IPL (left angular, left SMG) in bipolar II depression. In the subsequent texts, we discuss the possible role of these brain regions in the pathogenesis and treatment effect of bipolar II depression.

The first altered area was the mPFC, which is the core region of the DMN, after treatment of lithium and escitalopram. The slow 5 fALFF in these regions increased and were positively correlated with the decrease in HDRS. By using task-related and resting-state functional neuroimaging methods, some scientists reported that the mPFC is strongly related to self-referential thought, emotion regulation (63), maintaining spontaneous optimistic self-evaluative tendencies (64), and cognitive flexibility (65). Abnormal resting-state brain function in the mPFC was observed in individuals with bipolar disorder. One study reported reduced DMN connectivity and activation in the vmPFC in bipolar disorder patients with acute manic episodes (66). Another





research showed decreased connectivity between the left crus II and bilateral mPFC in unmedicated patients with bipolar II depression (67). A recent fALFF study revealed fALFF values of bilateral superior frontal gyrus changed in bipolar depression (68). The mPFC is an area with strong serotonergic projections (69), and the SSRI increases the concentration of 5-hydroxytryptamine by increasing the excitability of interneurons in the PFC (52) and regulates the bold signal of mPFC (69). Chakroborty et al. (70) reported that escitalopram changed the spontaneous activity of the brain of rats. Evidence showed that escitalopram can increase sensitivity to positive words and decrease responses to self-referential words in the mPFC (50, 55). Lithium also exerts an effect on the mPFC. It modulates synaptic plasticity on PFC (60, 71) and increases the level of N-acetylaspartate in PFC, which participates in neuronal metabolism (72). Patients with bipolar disorder taking lithium showed increased spontaneous brain activity (73) and increased concentration of glutamate and glutamine (61) on ACC. Combining our findings and the findings mentioned above, we found that escitalopram and lithium might have an effect on the fALFF of the mPFC and depressive symptoms by modulating neurotransmitters, neuronal metabolism, and synaptic plasticity in bipolar II depression.

PCC/PCu is another important area of change in slow 5 fALFF within the DMN after treatment with escitalopram and lithium in patients with bipolar II depression. Slow 5 fALFF in these regions increased and were positively correlated with the decrease in HDRS. PCC/PCu plays an important role in making inferences regarding the mental states (74) and perceiving and processing psychosocial stress (75). Some scientists reported decreased fALFF of PCu in psychotic bipolar disorder by means of fMRI (21). Consistent with our results, some studies showed that escitalopram and lithium act on the cingulate gyrus: escitalopram can reduce posterior cingulate activity in healthy people (55), and lithium increased relative glucose metabolic rates of the posterior cingulate (76). Machado-Vieira et al. (77) reported that lithium achieves therapeutic effects by reducing lactate concentrations in the cingulate cortex in patients with bipolar I or II depression. Based on the above discussion, we explain why slow 5 fALFF in the cingulate cortex during bipolar depressive episodes can be corrected by escitalopram and lithium and why the depressive symptoms such as lower self-evaluation and reduced ability to cope with stress were alleviated.

We found that the lower fALFF value in the left IPL and left LTC can be corrected by escitalopram and lithium. Structural and functional abnormalities in the IPL and LTC in patients with bipolar disorder have been observed. Compared with the HC group, the bipolar depression group showed decreased fALFF in the left IPL (12), and the bipolar I disorder group displayed large temporal lobe white matter (78) and small volumes of STG (79). Both lithium and escitalopram have effects on the superior temporal gyrus. Escitalopram enhanced regional homogeneity in the superior temporal lobe in patients with panic disorder (80), and lithium treatment can increase superior temporal gyrus volume in bipolar I disorder (79). However, in the present study, we did not find a significant correlation between increased slow 5 fALFF in the left IPL and left LTC and a decrease in HDRS.

The possible causes of these results were that the functions of these brain regions were mainly involved in cognition, auditory, and language function: the IPL is mainly related to cognitive functions, including memory retrieval and bottom-up attention (81); the MTG mainly takes part in motor skill learning (82) and short-term verbal memory (83); and the STG is generally considered a part of the high-order auditory cortex (84).

Finally, our study suggested that slow 5 fALFF better embodied the low-frequency amplitude of the cortex (i.e., mPFC, PCC) than slow 4 fALFF in patients with bipolar II depression. These findings are consistent with some previous studies (20, 45). Zuo found that the slow 4 fALFF showed the strongest signal in the basal ganglia thalamus, but slow 5 had the strongest signal in the cortex, particularly the mPFC (15). A resting-state study in post-stroke depression showed that fALFF only decreased in slow 5 band, but did not change in the slow 4 band (20): the changed brain region was observed in the cortex, including the right precentral gyrus and supplemental motor/middle frontal cortex. Another study in MDD suggested that alterations of slow 5 fALFF are more obvious than the slow 4 fALFF in cortical areas, such as the mPFC, ITG, and IPL (45). The neural mechanisms of the different frequency bands have not been elucidated yet, and some researchers proposed that neuronal oscillations are related to the activity of chemical synaptic signaling, input selection plasticity of neuron, and the connected neuron networks (85), which differ in the cortex and subcortex, and the information mentioned above may shed some light on our result that the cortex and subcortex have different fALFF bands.

## LIMITATION

The present study has some potential limitations. First, the sample size of our study is relatively small. Studies with larger sample sizes are needed to confirm these results in the future. Second, we adopted the combination of therapeutic regimens of escitalopram and lithium in line with the CANMAT guidelines for the management of patients with bipolar disorder (2013) and our clinical experience instead of the 2018 edition, which suggested the use of quetiapine as first-line treatment for medication-naïve patients with bipolar II depression. In the future, monotherapy with quetiapine can also be used to prove the results. Third, the impact of comorbidity of patients was not taken into account in our study, which could be considered a limitation. Lastly, the HCs only had MRI at baseline, and thus, the effect of time on the brain may be biased as a confounding factor.

## CONCLUSIONS

Three main findings were obtained in this study. First, the hypoactivity of slow 5 fALFF in the DMN might be corrected by escitalopram with lithium. Second, a positive correlation between increased fALFF values and the improvement of depressive symptoms in the mPFC and PCu/PCC was found during follow-up. Finally, the experiment confirmed that the fALFF changes in

patients with bipolar II depression are more sensitive to slow 5 band and the slow 5 fALFF might better embody the signal of the cortex when compared with slow 4 band.

## DATA AVAILABILITY STATEMENT

The raw data supporting the conclusions of this article will be made available by the authors, without undue reservation.

## ETHICS STATEMENT

All the adult participants ( $\geq 18$  years) signed informed consent forms. For participants under 18 years of age, written informed consent forms were provided by the participants' legal guardians/next of kin.

## REFERENCES

- Peter Dome, Zoltan Rihmer, Xenia Gonda. Suicide risk in bipolar disorder: a brief review. *Medicina (Kaunas)*. (2019) 55:403. doi: 10.3390/medicina55080403
- Solé B, Jiménez E, Torrent C, Reinares M, Bonnin CDM, Torres I, et al. Cognitive impairment in bipolar disorder: treatment and prevention strategies. *Int J Neuropsychopharmacol*. (2017) 20:670–80. doi: 10.1093/ijnp/pyx032
- Chen M-H, Chang W-C, Hsu J-W, Huang K-L, Tu P-C, Su T-P, et al. Correlation of proinflammatory cytokines levels and reduced gray matter volumes between patients with bipolar disorder and unipolar depression. *J Affect Disord*. (2019) 245:8–15. doi: 10.1016/j.jad.2018.10.106
- Syan SK, Smith M, Frey BN, Remtulla R, Kapczynski F, Hall GBC, et al. Resting-state functional connectivity in individuals with bipolar disorder during clinical remission: a systematic review. *J Psychiatry Neurosci*. (2018) 43:298–316. doi: 10.1503/jpn.170175
- Cordes D, Haughton VM, Arfanakis K, Carew JD, Turski PA, Moritz CH, et al. Frequencies contributing to functional connectivity in the cerebral cortex in "resting-state" data. *AJNR*. (2001) 22:1326–33. doi: 10.0000/PMID11498421
- Fox MD, Raichle ME. Spontaneous fluctuations in brain activity observed with functional magnetic resonance imaging. *Nat Rev Neurosci*. (2007) 8:700–11. doi: 10.1038/nrn2201
- Zou QH, Zhu CZ, Yang Y, Zuo XN, Long XY, Cao QJ, et al. An improved approach to detection of amplitude of low-frequency fluctuation (ALFF) for resting-state fMRI: fractional ALFF. *J Neurosci Methods*. (2008) 172:137–41. doi: 10.1016/j.jneumeth.2008.04.012
- Hu ML, Zong XF, Zheng JJ, Pantazatos SP, Miller JM, Li ZC, et al. Short-term effects of risperidone monotherapy on spontaneous brain activity in first-episode treatment-naïve schizophrenia patients: a longitudinal fMRI study. *Sci Rep*. (2016) 6:34287. doi: 10.1038/srep34287
- Lai CH, Wu YT. The changes in the low-frequency fluctuations of cingulate cortex and postcentral gyrus in the treatment of panic disorder: the MRI study. *World J Biol Psychiatry*. (2016) 17:58–65. doi: 10.3109/15622975.2015.1017604
- Sun N, Li Y, Zhang A, Yang C, Liu P. Fractional amplitude of low-frequency fluctuations and gray matter volume alterations in patients with bipolar depression. *Neurosci Lett*. (2020) 7:135030. doi: 10.1016/j.neulet.2020.135030
- Zhang K, Liu Z, Cao X, Yang C, Xu Y, Xu T, et al. Amplitude of low-frequency fluctuations in first-episode, drug-naïve depressive patients: a 5-year retrospective study. *PLoS ONE*. (2017) 12:e0174564. doi: 10.1371/journal.pone.0174564
- Qiu M, Zhang H, Mellor D, Shi J, Wu C, Huang Y. Aberrant neural activity in patients with bipolar depressive disorder distinguishing to the unipolar depressive disorder: a resting-state functional magnetic resonance imaging study. *Front Psychiatry*. (2018) 9:238. doi: 10.3389/fpsy.2018.00238
- Wang L, Li X, Li K, et al. Mapping the effect of escitalopram treatment on amplitude of low-frequency fluctuations in patients with depression: a resting-state fMRI study. *Metab Brain Dis*. (2017) 32:147–54. doi: 10.1007/s11011-016-9871-5
- Biswal B, Yetkin FZ, Haughton VM, Hyde JS. Functional connectivity in the motor cortex of resting human brain using echo-planar MRI. *Magn Reson Med*. (1995) 34:537–41. doi: 10.1002/mrm.1910340409
- Zuo XN, Di Martino A, Kelly C, Shehzad ZE, Gee DG, Klein DF, et al. The oscillating brain: complex and reliable. *Neuroimage*. (2010) 49:1432–45. doi: 10.1016/j.neuroimage.2009.09.037
- Qiu H, Li X, Luo Q, Li Y, Zhou X, Cao H, et al. Alterations in patients with major depressive disorder before and after electroconvulsive therapy measured by fractional amplitude of low-frequency fluctuations (fALFF). *J Affect Disord*. (2019) 244:92–9. doi: 10.1016/j.jad.2018.10.099
- Zhou C, Tang X, You W, Wang X, Zhang X, Zhang X, et al. Altered patterns of the fractional amplitude of low-frequency fluctuation and functional connectivity between deficit and non-deficit schizophrenia. *Front Psychiatry*. (2019) 10:680. doi: 10.3389/fpsy.2019.00680
- Li Y, Jing B, Liu H, Li Y, Gao X, Li Y, et al. Frequency-dependent changes in the amplitude of low-frequency fluctuations in mild cognitive impairment with mild depression. *J Alzheimers Dis*. (2017) 58:1175–87. doi: 10.3233/JAD-161282
- Zhou F, Huang S, Zhuang Y, Gao L, Gong H. Frequency-dependent changes in local intrinsic oscillations in chronic primary insomnia: a study of the amplitude of low-frequency fluctuations in the resting state. *Neuroimage Clin*. (2016) 15:458–65. doi: 10.1016/j.nicl.2016.05.011
- Egorova N, Veldsman M, Cumming T, Brodtmann A. Fractional amplitude of low-frequency fluctuations (fALFF) in post-stroke depression. *Neuroimage Clin*. (2017) 16:116–24. doi: 10.1016/j.nicl.2017.07.014
- Meda SA, Wang Z, Ivleva EI, Poudyal G, Keshavan MS, Tamminga CA. Frequency-specific neural signatures of spontaneous low-frequency resting state fluctuations in psychosis: evidence from bipolar-schizophrenia network on intermediate phenotypes (B-SNIP) consortium. *Schizophr Bull*. (2015) 41:1336–48. doi: 10.1093/schbul/sbv064
- Andrews-Hanna JR, Reidler JS, Sepulcre J, Poulin R, Buckner RL. Functional-anatomic fractionation of the brain's default network. *Neuron*. (2010) 65:550–62. doi: 10.1016/j.neuron.2010.02.005
- Buckner RL, Andrews-Hanna JR, Schacter DL. The brain's default network: anatomy, function, and relevance to disease. *Ann N Y Acad Sci*. (2008) 1124:1–38. doi: 10.1196/annals.1440.011
- Gao W, Chen S, Biswal B, Lei X, Yuan J. Temporal dynamics of spontaneous default-mode network activity mediate the association between reappraisal and depression. *Soc Cogn Affect Neurosci*. (2018) 13:1235–47. doi: 10.1093/scan/nsy092
- Mak LE, Minuzzi L, MacQueen G, Hall G, Kennedy SH, Milev R. The default mode network in healthy individuals: a systematic review and meta-analysis. *Brain Connect*. (2017) 7:25–33. doi: 10.1089/brain.2016.0438

## AUTHOR CONTRIBUTIONS

All authors listed have made a substantial, direct and intellectual contribution to the work, and approved it for publication.

## FUNDING

This work was supported by National Natural Science Foundation of China. (Grant Number: 81271484, 81871056).

## SUPPLEMENTARY MATERIAL

The Supplementary Material for this article can be found online at: <https://www.frontiersin.org/articles/10.3389/fpsy.2020.574819/full#supplementary-material>

26. Hamilton JP, Farmer M, Fogelman P, Gotlib IH. Depressive rumination, the default-mode network, and the dark matter of clinical neuroscience. *Biol Psychiatry*. (2015) 78:224–30. doi: 10.1016/j.biopsych.2015.02.020
27. Ge R, Blumberger DM, Downar J, Daskalakis ZJ, Dipinto AA. Abnormal functional connectivity within resting-state networks is related to rTMS-based therapy effects of treatment resistant depression: a pilot study. *J Affect Disord*. (2017) 218:75–81. doi: 10.1016/j.jad.2017.04.060
28. Zhong Y, Wang C, Gao W, Qian Xiao, Dali Lu, Qing Jiao. Aberrant resting-state functional connectivity in the default mode network in pediatric bipolar disorder patients with and without psychotic symptoms. *Neurosci Bull*. (2019) 35:581–90. doi: 10.1007/s12264-018-0315-6
29. Yang J, Pu W, Ouyang X, Tao H, Chen X, Huang X, et al. Abnormal connectivity within anterior cortical midline structures in bipolar disorder: evidence from integrated MRI and functional MRI. *Front Psychiatry*. (2019) 10:788. doi: 10.3389/fpsy.2019.00788
30. Brakowski J, Spinelli S, Dörig N, Bosch OG, Manoliu A, Holtforth MG, et al. Resting state brain network function in major depression-depression symptomatology, antidepressant treatment effects, future research. *J Psychiatr Res*. (2017) 92:147–59. doi: 10.1016/j.jpsychires.2017.04.007
31. Tian S, Zhang S, Mo Z, Chattun MR, Wang Q, Wang L, et al. Antidepressants normalize brain flexibility associated with multi-dimensional symptoms in major depressive patients. *Prog Neuropsychopharmacol Biol Psychiatry*. (2020) 100:109866. doi: 10.1016/j.pnpbp.2020.109866
32. van Wingen GA, Tendolkar I, Urner M, van Marle HJ, Denys D, Verkes R-J, et al. Short-term antidepressant administration reduces default mode and task-positive network connectivity in healthy individuals during rest. *Neuroimage*. (2014) 88:47–53. doi: 10.1016/j.neuroimage.2013.11.022
33. American Psychiatric Association. *Diagnostic and Statistical Manual of Mental Disorders*. Arlington, VA: American Psychiatric Association (2013).
34. Hamilton M. A rating scale for depression. *J Neurol Neurosurg Psychiatry*. (1960) 23:56–62. doi: 10.1136/jnnp.23.1.56
35. Young RC, Biggs JT, Ziegler VE, Meyer DA. A rating scale for mania: reliability, validity and sensitivity. *Br J Psychiatry*. (1978) 133:429–35. doi: 10.1192/bjp.133.5.429
36. Post RM, Altshuler L, Kupka R, McElroy S, Frye MA, Rowe M, et al. More pernicious course of bipolar disorder in the United States than in many European countries: implications for policy and treatment. *J Affect Disord*. (2014) 160:27–33. doi: 10.1016/j.jad.2014.02.006
37. Siman-Tov T, Bosak N, Sprecher E, Paz R, Eran A, Aharon-Peretz J, et al. Early age-related functional connectivity decline in high-order cognitive networks. *Front Aging Neurosci*. (2017) 8:330. doi: 10.3389/fnagi.2016.00330
38. Yatham LN, Kennedy SH, Parikh SV, Schaffer A, Beaulieu S, Alda M, et al. Canadian network for mood and anxiety treatments (CANMAT) and international society for bipolar disorders (ISBD) collaborative update of CANMAT guidelines for the management of patients with bipolar disorder: update 2013. *Bipolar Disord*. (2013) 15:1–44. doi: 10.1111/bdi.12025
39. Liu B, Zhang Y, Fang H, Liu J, Liu T, Li L. Efficacy and safety of long-term antidepressant treatment for bipolar disorders—a meta-analysis of randomized controlled trials. *J Affect Disord*. (2017) 223:41–8. doi: 10.1016/j.jad.2017.07.023
40. Yan CG, Wang XD, Zuo XN, Zang YF. DPABI: data processing and analysis for (resting-state) brain imaging. *Neuro Inform*. (2016) 14:339–51. doi: 10.1007/s12021-016-9299-4
41. Yan CG, Craddock RC, Zuo XN, Zang YF, Milham MP. Standardizing the intrinsic brain: towards robust measurement of inter-individual variation in 1000 functional connectomes. *Neuroimage*. (2013) 80:246–62. doi: 10.1016/j.neuroimage.2013.04.081
42. Friston KJ, Williams S, Howard R, Frackowiak RS, Turner R. Movement-related effects in fMRI time-series. *Magn Reson Med*. (1996) 35:346–55. doi: 10.1002/mrm.1910350312
43. Power JD, Mitra A, Laumann TO, Snyder AZ, Schlaggar BL, Petersen SE. Methods to detect, characterize, and remove motion artifact in resting state fMRI. *Neuroimage*. (2014) 84:320–41. doi: 10.1016/j.neuroimage.2013.08.048
44. Chen Z, Calhoun V. Effect of spatial smoothing on task fMRI ICA and functional connectivity. *Front Neuro Sci*. (2018) 12:15. doi: 10.3389/fnins.2018.00015
45. Wang L, Kong Q, Li K, Sua Y, Zeng Y, Zhang Q, et al. Frequency-dependent changes in amplitude of low-frequency oscillations in depression: a resting-state fMRI study. *Neuro Sci Lett*. (2016) 614:105–11. doi: 10.1016/j.neulet.2016.01.012
46. Calhoun VD, Adali T, Pearlson GD, Pekar JJ. A method for making group inferences from functional MRI data using independent component analysis. *Hum Brain Mapp*. (2001) 14:140–51. doi: 10.1002/hbm.1048
47. Owens MJ, Knight DL, Nemeroff CB. Second-generation SSRIs: human monoamine transporter binding profile of escitalopram and R-fluoxetine. *Biol Psychiatry*. (2001) 50:345–50. doi: 10.1016/S0006-3223(01)01145-3
48. Teixeira CM, Rosen ZB, Suri D, Sun Q, Hersh M, Sargin D, et al. Hippocampal 5-HT input regulates memory formation and schaffer collateral excitation. *Neuron*. (2018) 98:992–1004.e4. doi: 10.1016/j.neuron.2018.04.030
49. Zuzina AB, Vinarskaya AK, Balaban PM. Increase in serotonin precursor levels reinstates the context memory during reconsolidation. *Invert Neuro Sci*. (2019) 19:8. doi: 10.1007/s10158-019-0227-9
50. Komulainen E, Heikkilä R, Nummenmaa L, Raji TT, Harmer CJ, Isometsä E, et al. Short-term escitalopram treatment normalizes aberrant self-referential processing in major depressive disorder. *J Affect Disord*. (2018) 236:222–9. doi: 10.1016/j.jad.2018.04.096
51. Holck A, Wolkowitz OM, Mellon SH, Reus VI, Nelson JC, Westrin Å, et al. Plasma serotonin levels are associated with antidepressant response to SSRIs. *J Affect Disord*. (2019) 250:65–70. doi: 10.1016/j.jad.2019.02.063
52. Zhong P, Yan Z. Differential regulation of the excitability of prefrontal cortical fast-spiking interneurons and pyramidal neurons by serotonin and fluoxetine. *PLoS ONE*. (2011) 6:e16970. doi: 10.1371/journal.pone.0016970
53. Rauch A, Rainer G, Logothetis NK. The effect of a serotonin-induced dissociation between spiking and perisynaptic activity on BOLD functional MRI. *Proc Natl Acad Sci USA*. (2008) 105:6759–64. doi: 10.1073/pnas.0800312105
54. Winnubst J, Cheyne JE, Niculescu D, Lohmann C. Spontaneous activity drives local synaptic plasticity *in vivo*. *Neuron*. (2015) 87:399–410. doi: 10.1016/j.neuron.2015.06.029
55. Matthews SC, Simmons AN, Strigo IA, Arce E, Stein MB, Paulus MP. Escitalopram attenuates posterior cingulate activity during self-evaluation in healthy volunteers. *Psychiatry Res*. (2010) 182:81–7. doi: 10.1016/j.psychres.2010.02.003
56. Schranthee A, Lucassen PJ, Booij J, Reneman L. Serotonin transporter occupancy by the SSRI citalopram predicts default-mode network connectivity. *Eur Neuro Psychopharmacol*. (2018) 28:1173–9. doi: 10.1016/j.euroneuro.2018.07.099
57. Machado-Vieira R, Zanetti MV, DE Sousa RT, Soeiro-DE-Souza MG, Moreno RA, Busatto GF, et al. Lithium efficacy in bipolar depression with flexible dosing: a six-week, open-label, proof-of-concept study. *Exp Ther Med*. (2014) 8:1205–8. doi: 10.3892/etm.2014.1864
58. Suzuki M, Dallaspezia S, Locatelli C, Uchiyama M, Colombo C, Benedetti F. Does early response predict subsequent remission in bipolar depression treated with repeated sleep deprivation combined with light therapy and lithium? *J Affect Disord*. (2018) 229:371–6. doi: 10.1016/j.jad.2017.12.066
59. Won E, Kim YK. An oldie but goodie: lithium in the treatment of bipolar disorder through neuroprotective and neurotrophic mechanisms. *Int J Mol Sci*. (2017) 18:2679. doi: 10.3390/ijms18122679
60. Ruggiero RN, Rossignoli MT, Lopes-Aguiar C, Leite JP, Bueno-Junior LS, Romcy-Pereira RN. Lithium modulates the muscarinic facilitation of synaptic plasticity and theta-gamma coupling in the hippocampal-prefrontal pathway. *Exp Neurol*. (2018) 304:90–101. doi: 10.1016/j.expneurol.2018.02.011
61. Machado-Vieira R, Gattaz WF, Zanetti MV, De Sousa RT, Carvalho AF, Soeiro-de-Souza MG, et al. A longitudinal (6-week) 3T (1)H-MRS study on the effects of lithium treatment on anterior cingulate cortex metabolites in bipolar depression. *Eur Neuro Psychopharmacol*. (2015) 25:2311–7. doi: 10.1016/j.euroneuro.2015.08.023
62. Vargas C, Pineda J, Calvo V, López-Jaramillo C. Brain activation of euthymic patients with Type I bipolar disorder in resting state default mode network. *Rev Colomb Psiquiatr*. (2014) 43:154–61. doi: 10.1016/j.rcp.2014.02.008
63. Andrews-Hanna JR, Saxe R, Yarkoni T. Contributions of episodic retrieval and mentalizing to autobiographical thought: evidence from functional neuroimaging, resting-state connectivity, and fMRI meta-analyses. *Neuroimage*. (2014) 91:324–35. doi: 10.1016/j.neuroimage.2014.01.032

64. Wu J, Dong D, Jackson T, Wang Y, Huang J, Chen H. The neural correlates of optimistic and depressive tendencies of self-evaluations and resting-state default mode network. *Front Hum Neurosci.* (2015) 9:618. doi: 10.3389/fnhum.2015.00618
65. Xu H, Zhang Y, Zhang F, Yuan SN, Shao F, Wang W. Effects of duloxetine treatment on cognitive flexibility and BDNF expression in mPFC of adult male mice exposed to social stress during adolescence. *Front Mol Neurosci.* (2016) 9:95. doi: 10.3389/fnmol.2016.00095
66. Ongur D, Lundy M, Greenhouse I, Shinn AK, Menon V, Cohen BM, et al. Default mode network abnormalities in bipolar disorder and schizophrenia. *Psychiatry Res.* (2010) 183:59–68. doi: 10.1016/j.psychres.2010.04.008
67. Chen G, Zhao L, Jia Y, Zhong S, Chen F, Luo X. Abnormal cerebellum-DMN regions connectivity in unmedicated bipolar II disorder. *J Affect Disord.* (2019) 243:441–7. doi: 10.1016/j.jad.2018.09.076
68. Wang X, Zhao N, Shi J, Wu Y, Liu J, Xiao Q, et al. Discussion on patients with bipolar disorder and depressive episode by ratio low frequency amplitude combined with grey matter volume analysis. *J Med Syst.* (2019) 43:117. doi: 10.1007/s10916-019-1212-x
69. Windischberger C, Lanzenberger R, Holik A, Spindeleger C, Stein P, Ulrike Moser U, et al. Area-specific modulation of neural activation comparing escitalopram and citalopram revealed by pharmacofMRI: a randomized cross-over study. *Neuroimage.* (2010) 49:1161–70. doi: 10.1016/j.neuroimage.2009.10.013
70. Chakroborty S, Geisbush TR, Dale E, Pehrson AL, Sánchez C, West AR. Impact of vortioxetine on synaptic integration in prefrontal-subcortical circuits: comparisons with escitalopram. *Front Pharmacol.* (2017) 8:764. doi: 10.3389/fphar.2017.00764
71. Schloesser RJ, Martinowich K, Manji HK. Mood-stabilizing drugs: mechanisms of action. *Trends Neurosci.* (2012) 35:36–46. doi: 10.1016/j.tins.2011.11.009
72. Hajek T, Bauer M, Pfennig A, Cullis J, Ploch J, Claire O'Donovan Hajek T, et al. Large positive effect of lithium on prefrontal cortex N-acetylaspartate in patients with bipolar disorder: 2-centre study. *J Psychiatry Neurosci.* (2012) 37:185–92. doi: 10.1503/jpn.110097
73. Li L, Ji E, Tang F, Qiu Y, Han X, Zhang S, et al. Abnormal brain activation during emotion processing of euthymic bipolar patients taking different mood stabilizers. *Brain Imaging Behav.* (2019) 13:905–13. doi: 10.1007/s11682-018-9915-z
74. Esménio S, Soares JM, Oliveira-Silva P, Gonçalves ÓF, Friston K, Fernandes Coutinho J. Changes in the effective connectivity of the social brain when making inferences about close others vs. the self. *Front Hum Neurosci.* (2020) 14:151. doi: 10.3389/fnhum.2020.00151
75. Dong D, Lfi C, Zhong X, Gao Y, Cheng C, Sun X, et al. Neuroticism modulates neural activities of posterior cingulate cortex and thalamus during psychosocial stress processing. *J Affect Disord.* (2020) 262:223–8. doi: 10.1016/j.jad.2019.11.003
76. Hollander E, Buchsbaum MS, Haznedar MM, Berenguer J, Berlin HA, Chaplin W, et al. FDG-PET study in pathological gamblers. 1. Lithium increases orbitofrontal, dorsolateral and cingulate metabolism. *Neuro Psychobiol.* (2008) 58:37–47. doi: 10.1159/000154478
77. Machado-Vieira R, Zanetti MV, Otaduy MCDe, Sousa RT, Soeiro-de-Souza MG, Costa AC, et al. Increased brain lactate during depressive episodes and reversal effects by lithium monotherapy in drug-naïve bipolar disorder: a 3-T 1H-MRS study. *J Clin Psychopharmacol.* (2017) 37:40–5. doi: 10.1097/JCP.0000000000000616
78. Jones LD, Payne ME, Messer DF, Beyer JL, MacFall JR, Krishnan KRR, et al. Temporal lobe volume in bipolar disorder: relationship with diagnosis and antipsychotic medication use. *J Affect Disord.* (2009) 114:50–7. doi: 10.1016/j.jad.2008.07.003
79. Takahashi T, Malhi GS, Wood SJ, Yücel M, Walterfang M, Kawasaki Y. Gray matter reduction of the superior temporal gyrus in patients with established bipolar I disorder. *J Affect Disord.* (2010) 123:276–82. doi: 10.1016/j.jad.2009.08.022
80. Lai CH, Wu YT. Changes in regional homogeneity of parieto-temporal regions in panic disorder patients who achieved remission with antidepressant treatment. *J Affect Disord.* (2013) 151:709–14. doi: 10.1016/j.jad.2013.08.006
81. Igelström KM, Graziano MSA. The inferior parietal lobule and temporoparietal junction: a network perspective. *Neuro Psychologia.* (2017) 105:70–83. doi: 10.1016/j.neuropsychologia.2017.01.001
82. Pi YL, Wu XH, Wang FJ, Liu K, Wu Y, Zhu H, et al. Motor skill learning induces brain network plasticity: a diffusion-tensor imaging study. *PLoS ONE.* (2019) 14:e0210015. doi: 10.1371/journal.pone.0210015
83. Raettig T, Kotz SA. Auditory processing of different types of pseudo-words: an event-related fMRI study. *Neuroimage.* (2008) 39:1420–8. doi: 10.1016/j.neuroimage.2007.09.030
84. Yi HG, Leonard MK, Chang EF. The encoding of speech sounds in the superior temporal gyrus. *Neuron.* (2019) 102:1096–110. doi: 10.1016/j.neuron.2019.04.023
85. Buzsáki G, Draguhn A. Neuronal oscillations in cortical networks. *Science.* (2004) 304:1926–9. doi: 10.1126/science.1099745

**Conflict of Interest:** The authors declare that the research was conducted in the absence of any commercial or financial relationships that could be construed as a potential conflict of interest.

Copyright © 2021 Zhou, Ma, Li, Liao, Yang, Ren, Tang, Li, Li, He and Chen. This is an open-access article distributed under the terms of the Creative Commons Attribution License (CC BY). The use, distribution or reproduction in other forums is permitted, provided the original author(s) and the copyright owner(s) are credited and that the original publication in this journal is cited, in accordance with accepted academic practice. No use, distribution or reproduction is permitted which does not comply with these terms.