



Published in final edited form as:

*J Am Board Fam Med.* 2020 ; 33(3): 473–480. doi:10.3122/jabfm.2020.03.190380.

## Breast Cancer Screening in Older Women: the importance of shared decision making

Sarina Schrager, MD,MS<sup>1</sup>, Viktoriya Ovsepyan, BA<sup>2</sup>, Elizabeth Burnside, MD,MS, MPH<sup>3</sup>

<sup>1</sup>University of Wisconsin Department of Family Medicine and Community Health, Madison

<sup>2</sup>University of Wisconsin School of Medicine and Public Health, Madison

<sup>3</sup>University of Wisconsin Department of Radiology, Madison

### Abstract

Incidence of breast cancer increases with age up until age 80. Screening mammography has demonstrated efficacy in decreasing mortality from breast cancer among women between 50-74 years of age. However, most major organizations do not include women over 74 in their recommendations due to the lack of evidence in this age group. This paper will review current recommendations for breast cancer screening in women over the age of 74. It will also present clear guidelines for primary care clinicians to follow that incorporate shared decision-making techniques, tools for estimating the risks and benefits of screening mammography, and strategies for integrating a patient's life expectancy and co-morbidities into the decision-making process. We also emphasize the importance of using thoughtful communication strategies in order to fully engage older women in the breast cancer screening discussion.

### Case:

Ms. Brown is a 76 year-old women with well controlled hypertension, but no other medical problems. She comes in for a physical. You bring up breast cancer screening and discuss the mixed recommendations for continuing screening mammography in women over 74. What should you tell her?

### Background:

Age is the major risk factor for breast cancer. Breast cancer accounts for 30% of all new cancer diagnoses in women.<sup>1</sup> Breast cancer deaths have declined significantly in the United States due to improvements in early detection and treatment efficacy, breast cancer still accounts for 30% of all new cancer diagnoses in women.<sup>1</sup> Approximately 41% of all incident breast cancers and 57% of all breast cancer deaths occur among women aged 65 years and older.<sup>2</sup> Furthermore, women 65 who develop breast cancers have higher death rates and poorer outcomes<sup>3-5</sup>. The incidence of breast cancer continues to increase until age 80<sup>6</sup>.

Screening mammography has been shown to be effective in reducing breast cancer mortality in women aged 50-74 years.<sup>3</sup> However, since none of the randomized trials of screening mammography included women over the age of 74, and very few trials included women over the age of 70, screening recommendations for older women are lacking and remain controversial. The decision to continue screening in women over the age of 74 should be individualized, taking into account potential benefits and harms of screening in the context of a woman's overall health, life expectancy, and values. This paper aims to provide a guide for primary care clinicians who take care of women over the age of 74.

## Screening guidelines for women over 74

Most guidelines suggest that breast cancer screening should continue until the age of 74, but beyond that age, professional organizations differ in their recommendations (Table 1). The American Cancer Society advises physicians to continue screening patients as long as they are in "good overall health" and have a life expectancy of 10 year or longer,<sup>7</sup> while the American College of Physicians recommends screening to stop at age 74.<sup>8</sup> The United States Preventive Services Task Force offers no recommendation, due to insufficient evidence.<sup>9</sup>

## Benefits and Harms

Although randomized trials did not include women over the age of 74, observational studies have shown a reduction in breast cancer mortality associated with mammographic detection of breast cancer in women 75 years and older.<sup>10</sup> Modeling studies have also shown that continuing biennial screening to age 79 years (vs. 69 years) reduces breast cancer mortality by 6-10%.<sup>11</sup> When biennial screening mammography is continued into a woman's 70's (rather than until age 69) 2 fewer women per 1,000 die from breast cancer after 10 years.<sup>12</sup> The specificity and sensitivity of mammography improves with older age. Mammography in women older than 80 years has a sensitivity of 86% and specificity of 94% (versus sensitivity=73% and specificity=92% in a 50-year-old women).<sup>13</sup> As women age, the proportion of invasive ductal cancer versus ductal carcinoma in-situ cases rises, while the proportion of cases with positive nodes decrease.<sup>14</sup> Elderly women who forgo screening are more likely to present with highest stage cancers<sup>15-17</sup> and show reduced survival<sup>17-20</sup>. Therefore, the most obvious benefit of continuing screening in older women is finding breast cancer at a point when potentially harmful treatment can be minimized, life expectancy maintained, and morbidity avoided.

The potential harms of breast cancer screening in older women include false positive results and overdiagnosis. Among women 75 years and older, 200 out of 1,000 who are screened over 10 years will experience a false-alarm,<sup>10</sup> which can cause pain, anxiety, and distress.<sup>21,22</sup> False positive mammogram results decrease with age<sup>12</sup>. Overdiagnosis, a phenomenon in which a cancer detected by screening would not have gone on to cause symptoms or death, is a harm of screening that increases with age.<sup>10, 23,24</sup>

Follow-up procedures such as additional mammograms, ultrasounds, and breast biopsies, may be more painful and frightening for older women who have cognitive impairment

(dementia), and other comorbidities (arthritis, hemiparesis).<sup>22,25,26</sup> Further, treatments for breast cancer (surgery, chemotherapy, and radiation) may confer greater risks in older women and impact their quality of life without prolonging their life.

It's important to communicate the possible harms of breast cancer screening to patients, since many older adults tend to overestimate the benefits of screening and underestimate the harms.<sup>27,28</sup>

## Taking into Account General Health, Comorbidity, Life Expectancy

Several guidelines recommend screening women who have a life expectancy of at least 10 years and good overall health (Table 1). Based on 2008 U.S. Life Tables, approximately 50% of 80-year-old women and 25% of 85-year-old women will live at least 10 years (Figure 1).<sup>10, 29</sup>

Studies show that breast cancer screening does not benefit older women with severe or multiple comorbidities, due to competing causes of mortality.<sup>16,17,20</sup> Although women with a life expectancy of less than 10 years are unlikely to experience a mortality reduction from screening mammography,<sup>7,9,10,30</sup> many women with serious comorbidities are still receiving routine screening mammograms.<sup>31-32</sup> Among older women, breast cancer risk factors such as life-long obesity, high bone density, and high breast density, are also more predictive of late life breast cancer than factors such as age at first birth or age at first menarche.<sup>10</sup>

An algorithm included in this article can help guide the decision-making process. (Figure 1) Another resource that may be helpful for physicians is ePrognosis (<https://eprognosis.ucsf.edu>), a repository of geriatric prognostic indices. These indices incorporate age, co-morbidities, and functional status to predict long-term mortality among older women, and can be used to corroborate clinical judgement.<sup>33</sup> For instance, a risk calculator on the ePrognosis website can be used to estimate a woman's probability of living for 10 years or longer, by inputting information about the patient's age, BMI, past medical history, and ability to perform normal daily activities. If the 10-year mortality risk is calculated as <50%, the life expectancy is estimated to be greater than 10 years, and screening may be recommended to the patient. Another option on ePrognosis is an online breast cancer screening aid. See Box. This tool requires input of similar patient information as the risk calculator, and then offers a screening recommendation on the final page. Information that a patient may find useful such as supporting data about benefits and harms of screening, the risk of false positives, and mortality estimates, accompanies the recommendation.

## Strategies for an Effective Discussion

Since the decision to continue breast cancer screening in older women should be most appropriately individualized, it's important to use a shared decision-making process with the patient. Data shows that patients appreciate discussions of stopping screening most from a trusted clinician. Therefore, these conversations should take place between the PCP and the patient. It is logical to start discussing when to stop screening as a woman nears 74, which is when the recommendations change. That way, the clinician and patient can have a series of conversations about the topic of screening, how often to screen, and when or whether to stop

screening at a certain age. Screening conversations can also include a partner or family member who can help delineate health priorities.

Key shared decision-making elements for the clinician are discussing both the risks and benefits of mammography, and then assessing the patient's understanding of the information presented.<sup>34</sup> Conveying numbers using absolute risk reduction, natural frequencies, and descriptive, everyday language (rather than technical jargon) will also improve the patient's comprehension.<sup>35</sup> When discussing breast cancer screening, it is necessary to explore the patient's preferences as well. For instance, screening mammography should not be performed on women who would not choose further evaluation or treatment based on abnormal screening results. Also, some patients may find little value in the slight mortality benefit that screening offers, and may wish to avoid the potential harms of screening.

Health decision aids are a helpful tool for presenting information about screening mammography to women. They often include visual aids, and present risk with absolute risk reductions instead of relative risk reductions, to maximize patient's understanding. Beth Israel Deaconess Medical Center offers two decision aids for older women, one for women aged 75-84, and another for women aged 85 or older.<sup>36-38</sup> The Center for Medical Psychology and Evidence-Based Decision-Making also offers a decision aid for women 70 years or older.<sup>39</sup> These decision aids can be printed out, and offer more detailed information than the online ePrognosis breast cancer screening aid. The University of Sydney tool is a 24 page interactive worksheet geared specifically for women over 70 that women can print out and work through.<sup>39</sup> ([http://www.psych.usyd.edu.au/cemped/docs/Mammogram\\_DecisionAid.pdf](http://www.psych.usyd.edu.au/cemped/docs/Mammogram_DecisionAid.pdf))

#### Case (continued)

We go through the decision aid with Ms. Brown. She has well controlled hypertension, does not smoke, and can walk 3 blocks with no assistance. She has not been admitted to the hospital in the last year. The decision aid assigns points to each question (i.e. have you ever been diagnosed with cancer, can you walk 3 blocks) and the lower the score (the more negative answers), the more likely that the potential benefits of a mammogram will outweigh the potential harms.<sup>41</sup> Based on her overall good health, it is likely that she would continue to benefit from screening if she decides to continue.

Additional aids can be found on the Ottawa Patient Decision Aids Inventory.<sup>40</sup> A case study is included in this paper that shows how to utilize the Beth Israel health decision aid for women aged 75-84,<sup>37</sup> and elements of the Three Talk shared decision-making model<sup>41,42</sup>, to discuss breast cancer screening with older women. (Box 1) The Three Talk Model is a method of ensuring that shared decision making is taking place. It makes sure that the clinician includes a statement about the choice that needs to be made (choice talk), the options to choose between (Option talk), and then concludes with a decision that is adherent to the patient's values (Decision talk).

Lastly, framing discussions in terms of the balance between potential benefits of screening and harms has been found to be more effective than simply citing national guideline

recommendations.<sup>43-46</sup> This balance is especially important when explaining that screening mammograms would not be beneficial for a person with multiple comorbidities and a life expectancy of less than 10 years. In women with a shorter life expectancy, it is important to emphasize that the patient is more likely to experience harms than benefits from breast cancer screening. Focusing on interventions that are likely to help the patient over a shorter time-frame will likely provide more value. Additional strategies, videos, and practice phrases for communicating prognosis to patients can be found on the ePrognosis website.<sup>47</sup> Literature suggests that patients prefer to hear recommendations about screening cessation in the context of their other health conditions, rather than being told that they should stop screening.<sup>45,46</sup>

## Conclusion:

Although guidelines are conflicting about whether to continue screening mammography in older women, clinicians can use shared decision making to help women make decisions about screening. Using these communication strategies and decision aids along with life expectancy calculators, clinicians can fully engage older women in the breast cancer screening process.

## References:

1. Siegel RL, Miller KD, Jemal A. Cancer statistics, 2018. CA: A Cancer Journal for Clinicians. 2018;68(1):7–30. [PubMed: 29313949]
2. Howlader N, Noone AM, Krapcho M, Neyman N, Aminou R, Waldron W, Altekruse SF, Kosary CL, Ruhl J, Tatalovich Z, et al. Bethesda, MD: 2012 4, SEER Cancer Statistics Review, 1975–2009, National Cancer Institute [https://seer.cancer.gov/csr/1975\\_2009\\_pops09/](https://seer.cancer.gov/csr/1975_2009_pops09/), based on November 2011 SEER data submission, posted to the SEER web site.
3. Hillner BE, Penberthy L, Desch CE, McDonald MK, Smith TJ, Retchin SM. Variation in staging and treatment of local and regional breast cancer in the elderly. Breast Cancer Res Treat. 1996;40(1):75–86. [PubMed: 8888154]
4. McCarthy EP, Burns RB, Freund KM, Ash AS, Shwartz M, Marwill SL, Moskowitz MA. Mammography use, breast cancer stage at diagnosis, and survival among older women. J Am Geriatr Soc. 2000 10;48(10):1226–33. [PubMed: 11037009]
5. Randolph WM, Goodwin JS, Mahnken JD, Freeman JL. Regular mammography use is associated with elimination of age-related disparities in size and stage of breast cancer at diagnosis. Ann Intern Med. 2002 11 19;137(10):783–90. [PubMed: 12435214]
6. Howlader N, Noone AM, Krapcho M, Garshell J, Miller D, Altekruse SF, Kosary CL, Yu M, Ruhl J, Tatalovich Z, et al. Bethesda, MD: 2015 4, SEER Cancer Statistics Review, 1975–2012, National Cancer Institute [http://seer.cancer.gov/csr/1975\\_2012/](http://seer.cancer.gov/csr/1975_2012/), based on November 2014 SEER data submission, posted to the SEER web site.
7. Oeffinger KC, Fontham ETH, Etzioni R, Herzig A, Michaelson JS, Shih YC, Walter LC, Church TR, Flowers CR, LaMonte SJ, et al. Breast cancer screening for women at average risk: 2015 guideline update from the American Cancer Society. JAMA. 2015;314(15):1599–1614. [PubMed: 26501536]
8. Qaseem A, Lin JS, Mustafa RA, Horwath CA, Wilt TJ. Screening for breast cancer in average-risk women: a guidance statement from the American College of Physicians. Ann Intern Med. 2019;170:547–560. [PubMed: 30959525]
9. Siu AL. U.S. Preventive Services Task Force. Screening for breast cancer: U.S. Preventive Services Task Force recommendation statement. Ann Intern Med. 2016;164:279–96. [PubMed: 26757170]
10. Walter LC, Schonberg MA. Screening mammography in older women: a review. JAMA. 2014;311(13):1336–1347. [PubMed: 24691609]

11. Mandelblatt JS, Cronin KA, Bailey S, Berry DA, Koning HJ, Draisma G, Huang H, Lee SJ, Munsell M, Plevritis SK. Effects of mammography screening under different screening schedules: model estimates of potential benefits and harms. *Ann Intern Med.* 2009;151(10):738–47 [PubMed: 19920274]
12. Barratt A, Howard K, Irwig I, Salkeld G, Houssami N. Model of outcomes of screening mammography: information to support informed choices. *BMJ.* 2005; 330(7497):936. [PubMed: 15755755]
13. Carney PA, Miglioretti DL, Yankaskas BC, Kerlikowske K, Rosenberg R, Rutter CM, Geller BM, Abraham LA, Taplin SH, Dignan M, et al. Individual and combined effects of age, breast density, and hormone replacement therapy use on the accuracy of screening mammography. *Ann Intern Med.* 2003;138(3):168–175. [PubMed: 12558355]
14. Henderson LM, O’Meara ES, Braithwaite D, Onega T. Breast Cancer Surveillance Consortium. Performance of digital screening mammography among older women in the United States. *Cancer.* 2015;121(9):1379–1386 [PubMed: 25537958]
15. Vyas A, Madhavan S, Sambamoorthi U. Association between persistence with mammography screening and stage at diagnosis among elderly women diagnosed with breast cancer. *Breast Cancer Research and Treatment.* 2014;148(3):645–54. [PubMed: 25399230]
16. Badgwell BD, Giordano SH, Duan ZZ, Fang S, Bedrosian I, Kuerer HM, Singletary SE, Hunt KK, Hortobagyi GN, Babiera G. Mammography Before Diagnosis Among Women Age 80 Years and Older With Breast Cancer. *J Clin Oncol.* 2008;26(15):2482–8. [PubMed: 18427152]
17. McCarthy EP, Burns RB, Freund KM, Ash AS, Shwartz M, Marwill SL, Moskowitz MA. Mammography use, breast cancer stage at diagnosis, and survival among older women. *J Am Geriatr Soc.* 2000;48(10):1226–33. [PubMed: 11037009]
18. Vacek PM, Skelly JM. A prospective study of the use and effects of screening mammography in women aged 70 and older. *J Am Geriatr Soc.* 2014;63(1):1–7. [PubMed: 25537022]
19. Dijkstra JV, Verbeek AL, Beex LV, Hendriks JH, Holland R, Mravunac M, Straatman H, Werre JM. Breast-cancer mortality in a non-randomized trial on mammographic screening in women over age 65. *Int J Cancer.* 1997;70(2):164–8. [PubMed: 9009155]
20. McPherson CP, Swenson KK, Lee MW. The effect of mammographic detection and comorbidity on the survival of older women with breast cancer. *J Am Geriatr Soc.* 2002; 50(6):1061–1068. [PubMed: 12110066]
21. Bond M, Pavey T, Welch K, Cooper C, Garside R, Dean S, Hyde C. Systematic review of the psychological consequences of false- positive screening mammograms. *Health Technol Assess.* 2013; 17(13):1–170.
22. Walter LC, Eng C, Covinsky KE. Screening mammography for frail older women: what are the burdens? *J Gen Intern Med.* 2001;16(11):779–784. [PubMed: 11722693]
23. Welch HG, Black WC. Overdiagnosis in cancer. *J Natl Cancer Inst.* 2010; 102(9):605–613. [PubMed: 20413742]
24. Puliti D, Duffy SW, Miccinesi G, de Koning H, Lynge E, Zappa M, Paci E. Overdiagnosis in mammographic screening for breast cancer in Europe: a literature review. *J Med Screen.* 2012;19 Suppl 1:42–56.
25. Sox HC. Screening for disease in older people. *J Gen Intern Med.* 1998;13(6):424–425. [PubMed: 9669575]
26. Raik BL, Miller FG, Fins JJ. Screening and cognitive impairment: ethics of forgoing mammography in older women. *J Am Geriatr Soc.* 2004;52(3):440–444. [PubMed: 14962162]
27. Schwartz LM, Woloshin S, Fowler FJ Jr, Welch HG. Enthusiasm for cancer screening in the United States. *JAMA.* 2004;291(1):71–78. [PubMed: 14709578]
28. Hoffman RM, Lewis CL, Pignone MP, Couper MP, Barry MJ, Elmore JG, Levin CA, Van Hoewyk J, Zikmund-Fisher BJ. Decision-making processes for breast, colorectal, and prostate cancer screening: the DECISIONS survey. *Med Decis Making.* 2010; 30(5 Suppl):53S–64S. [PubMed: 20881154]
29. Arias E National Vital Statistics Reports. 3. Vol. 61 Hyattsville, MD: National Center for Health Statistics; 2012. United States life tables, 2008.
30. National Comprehensive Cancer Network. Breast cancer screening and diagnosis. Version 1.2016.



31. Sima CS, Panageas KS, Schrag D. Cancer screening among patients with advanced cancer. *JAMA*. 2010;304:1584–91. [PubMed: 20940384]
32. Tan A, Kuo YF, Goodwin JS. Potential overuse of screening mammography and its association with access to primary care. *Med Care*. 2014;52:490–5. [PubMed: 24828844]
33. Yourman LC, Lee SJ, Schonberg MA, Wildera EW, Smith AK. Prognostic indices for older adults: a systematic review. *JAMA*. 2012; 307(2):182–192. Prognostic indices available at <http://www.eprognosis.org>. [PubMed: 22235089]
34. Schrager SB, Phillips G, Burnside E. A simple approach to shared decision making in cancer screening. *Fam Pract Manag*. 2017;24(3):5–10.
35. Schrager S Five ways to communicate risks so that patients understand. *Fam Pract Manag*. 2018;25(6):28–31
36. Schonberg MA, Hamel MB, Davis RB, Griggs MC, Wee CC, Fagerlin A, Marcantonio ER. Development and evaluation of a decision aid on mammography screening for women aged 75 and older. *JAMA Intern Med*. 2014;174(3):417–424 [PubMed: 24378846]
37. Schonberg M (2013). Should I continue having mammograms? For women age 75 to 84 Years. Beth Israel Deaconess Medical Center Available at: <https://www.bidmc.org/-/media/files/beth-israel-org/research/research-by-department/medicine/general-medicine-research/research-faculty/decision-aid-758432019.pdf>
38. Schonberg M (2013) Should I continue having mammograms? For women age 85 or older. Beth Israel Deaconess Medical Center Available at: <https://www.bidmc.org/-/media/files/beth-israel-org/research/research-by-department/medicine/general-medicine-research/research-faculty/decision-aid-8532019.pdf>
39. Should I continue having mammograms to screen for breast cancer? A decision aid for women aged 70 and older at their next screening mammogram. (2003). University of Sydney Available at: [http://www.psych.usyd.edu.au/cemped/docs/Mammogram\\_DecisionAid.pdf](http://www.psych.usyd.edu.au/cemped/docs/Mammogram_DecisionAid.pdf)
40. The Ottawa Hospital Research Institute. (2019). Patient Decision Aids. Available at: <https://decisionaid.ohri.ca/AZsearch.php?criteria=breast+cancer+&search=Go>
41. Elwyn G, Frosch D, Thomson R, Joseph-Williams N, Lloyd A, Kinnersley P, Cording E, Tomson D, Dodd C, Rollnick S. Shared decision making: a model for clinical practice. *J Gen Intern Med*. 2012;27(10):1361–1367. [PubMed: 22618581]
42. Schrager S, Little T. Breast Cancer Screening Shared Decision Making Toolkit. University of Wisconsin-Madison School of Medicine & Public Health Madison, WI; 2018 Available at: <https://www.hipxchange.org/ScreeningMammo>.
43. Schonberg MA, Ramanan RA, McCarthy EP, Marcantonio ER. Decision making and counseling around mammography screening for women aged 80 or older. *J Gen Intern Med*. 2006;21(9):979–85. [PubMed: 16918745]
44. Torke AM, Schwartz P, Holtz LR. Older adults and foregoing cancer screening: “I think it would be strange.” *Arch of Intern Med*. 2013;173(7):526–531.
45. Schoenborn NL, Lee K, Pollack CE, Armacost K, Dy SM, Bridges JF, Xue QL, Wolff AC, Boyd C. Older adult’s views and communication preferences about cancer screening cessation. *JAMA Int Med*. 2017;177(8):1121–1128.
46. Schoenborn NL, Boyd CM, Lee SJ, Cayea D, Pollack CE. Communicating about stopping cancer screening: comparing clinicians’ and older adults perspectives. *Gerontologist*. 2019;99(S1):S67–76.
47. Lee S, Smith A, Wildera E, Yourman L, Schonberg M and Ahalt C (n.d.). Prognosis Communication. ePrognosis. Available at: <https://eprognosis.ucsf.edu/communication/index.php>

**Box 1:****Case Study (Continued): Using a Health Decision Aid and the Three Talk Model to discuss breast cancer screening in older women**

Jane Brown is a 76 year-old woman presenting for a physical. She has well-controlled HTN, lives on her own, and maintains a physically active lifestyle. Jane has been getting bi-annual screening mammograms for many years, and finds them reassuring, since she has personally known women with breast cancer. At this appointment, Jane is wondering if she needs to schedule a screening mammogram.

**Choice Talk**

You let your patient know that she can continue with biannual screening, or stop screening altogether, and that you can work with her to reach a decision that would be best for her. To start, you tell her that it is unclear if screening mammograms benefit women over the age of 74, and you explain why. Then, you offer to discuss her overall health, life expectancy, and personal preferences together with her to decide whether to continue, or stop, bi-annual screening.

Ex: Beyond age 74, it is unknown whether women benefit from routine screening mammograms. This controversy exists because trials of screening mammography did not include women over the age of 74. Some organizations say that women should stop screening when they're 74 years old, while others recommend screening to continue as long as the woman is in good overall health and has a life expectancy of over 10 years. To reach a decision, you and I need to discuss your overall health, review the risks and benefits of screening, and then decide together what the best option would be for you.

**Option Talk**

You discuss individual co-morbidities and potential risks and benefits of continuing to do screening mammography.

Ex: When we take into consideration your age, weight, lack of significant medical conditions, and the ease with which you are able to perform normal daily activities, we see that mammograms may help you live longer. Studies show that the potential benefit of screening mammograms (i.e. reducing breast cancer mortality) occurs ~5-10 years after mammography. Since you are likely to live longer than that, screening mammograms may benefit you. Was that clear? What questions do you have for me?

Ex. When we look at your list of medical problems as well as your age, the potential harms of screening mammography may outweigh the benefits for you. Would you be willing to undergo surgery, and potentially other treatments if a mammogram were to diagnose a breast cancer? What questions do you have about whether to continue breast cancer screening?

Next, you use a patient decision aid to review the potential harms and benefits of screening mammography in older women. You explain to your patient the risks of false positives and overdiagnosis, as well as the potential mortality benefit, and show her the pictographs that convey this information in the decision aid. Briefly, you review the



treatment options for breast cancer, so that each patient considers whether or not she would choose treatment, if cancer was found on her mammograms. Afterwards, you assess your patient's understanding.

Ex: The benefit of screening mammograms is catching a cancer while it's small, improving the chance that you will only need minor surgery. Studies suggest that, among women who get screening mammograms, 1 less woman out of a 1,000 will die of breast cancer in the next 5 years.

There are several potential harms of screening mammograms as well. For instance, 100 women out of a 1,000 will experience false positives in the next 5 years, as you can see in this graph. These false positives can cause pain, anxiety, and lead to additional tests. Overdiagnosis, which is finding a cancer that would not have harmed you in your lifetime, is another harm of screening and the risk for overdiagnosis increases with age. If breast cancer is found, your treatment options are surgery, hormonal therapy, and radiation therapy. Each of these options has risks for side-effects and complications, as briefly described in this decision aid.

To make sure that I explained everything clearly, can you tell me in your own words about the risks and benefits of screening?

### **Decision Talk**

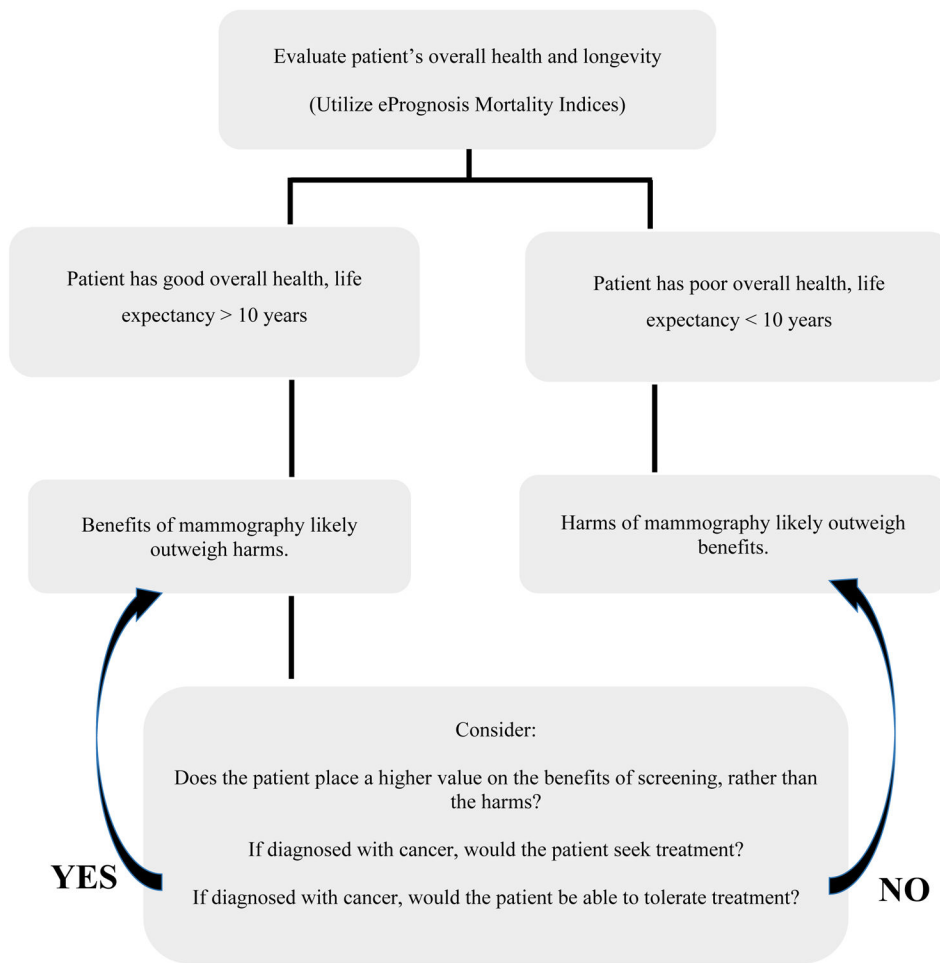
Now that you have discussed whether screening mammograms are likely to benefit Jane, and reviewed the risks and benefits of screening with her, you ask your patient about her preferences for screening.

Ex: *Now that we've discussed screening in more detail, can you share your thoughts with me? Do the harms of screening concern you more, or do you think that the potential for finding a breast cancer early outweighs the risks of screening?*

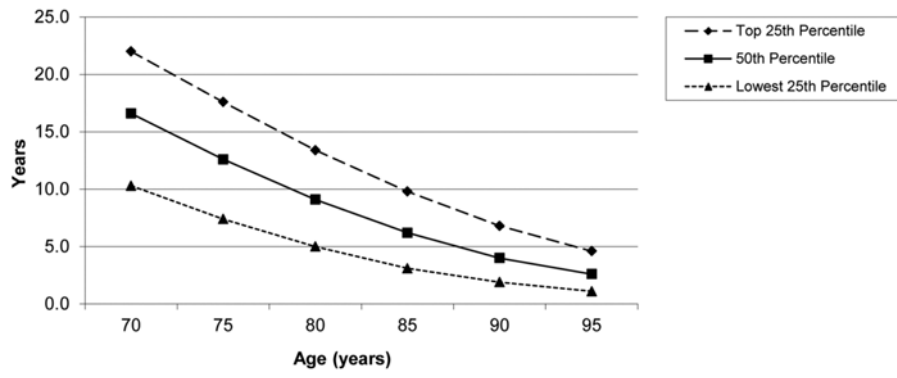
Lastly, you integrate your patient's preferences and values into the final decision, and remind her that you can re-visit this discussion in the future as well.

Ex: To summarize, you understand the risks of continuing with breast cancer screening, but you would still like to get bi-annual mammograms. You've had close friends that passed away from breast cancer, and continuing with screening will give you some peace of mind. Is that correct?

I will order the mammogram for you. Please know that we can always talk about screening again at your next appointment.



**Figure 1:** An algorithmic approach to breast cancer screening for women over the age of 74



**Figure 2: Life Expectancy of Women in the US<sup>10</sup>**

This figure shows that age alone is a crude predictor of life expectancy because considerable variability in longevity exists among women in the U.S.

**Table 1:**

## Summary of Screening Mammography Recommendations in Older Women at Average Risk

Source (Year Issued)	Should women in their 70's get mammograms?	If yes, how frequently?
U.S. Preventive Services Task Force and AAFP (2016) <sup>1</sup>	Yes, until age 74 Beyond age 74: No recommendation due to insufficient evidence. If offered, patients should understand the uncertainty about the balance of benefits and harms.	Every 2 years
American Cancer Society (2015) <sup>2</sup>	Yes Continue screening as long as a patient has good overall health and a life expectancy of 10 years or longer	1 to 2 years
American College of Physicians (2019) <sup>3</sup>	Yes, until age 74 Beyond age 74: Screening not recommended. Patients aged 75 years or older, or of any age if they have serious health conditions, are unlikely to benefit yet still experience harms from screening and treatment.	Every 2 years
American Academy of Family Physicians (2016) <sup>4</sup>	Yes, until age 74 Beyond age 74: No recommendation due to insufficient evidence. If offered, patients should understand the uncertainty about the balance of benefits and harms.	Every 2 years
American College of Obstetricians & Gynecologists (2017) <sup>5</sup>	Yes, until age 75 Beyond age 75: Decision to stop screening should be based on a shared-decision making process that includes a discussion of the patient's health status and longevity	1 to 2 years
American College of Radiology (2017) <sup>6</sup>	Yes The age to stop screening should be based on each patient's health status rather than an age-based determination. Screening recommendations should be tailored to individual circumstances such as life expectancy, comorbidities, and the intention to seek (and ability to tolerate) treatment if a cancer is detected.	Every year
Canadian Task Force on Preventive Health Care (2018) <sup>7</sup>	Yes, until age 74 Beyond age 74: No recommendation due to insufficient evidence	2 to 3 years
National Health Service, United Kingdom (2015) <sup>8</sup>	Yes, until age 73 Beyond age 73: No recommendation, but patients remain eligible for screening	Every 3 years
Royal Australian College of General Practitioners (2018) <sup>9</sup>	Yes, until age 74 Beyond age 74: No recommendation due to insufficient evidence from randomized trials. However, observational studies favor extending screening to patients with a life expectancy of at least 10 years	Every 2 years

<sup>1</sup>. Siu AL. Screening for Breast Cancer: U.S. Preventive Services Task Force Recommendation Statement. *Ann Intern Med.* 2016;164:279–296.

<sup>2</sup>. Oeffinger KC, Fontham ETH, Etzioni R, et al. Breast Cancer Screening for Women at Average Risk: 2015 Guideline Update from the American Cancer Society. *JAMA.* 2015;314(15):1599–1614.

<sup>3</sup>. Qaseem A, Lin JS, Mustafa RA, et al. Screening for Breast Cancer in Average-Risk Women: A Guidance Statement from the American College of Physicians. *Ann Intern Med.* 2019;170:547–560.

<sup>4</sup>. Breast Cancer - Clinical Preventive Service Recommendation. American Academy of Family Physicians. 2016 Jan 22 [accessed 2019 May 21]. <https://www.aafp.org/patient-care/clinical-recommendations/all/breast-cancer.html>

<sup>5</sup>. Practice Bulletin Number 179: breast cancer risk assessment and screening in average-risk women. *Obstet Gynecol.* 2017;130: 241-43.

<sup>6</sup>. Monticciolo DL, Newell MS, Hendrick ER, et al. Breast Cancer Screening for Average-Risk Women: Recommendations from the ACR Commission on Breast Imaging. *J Am Coll Radiol.* 2017;14(9):1137-1143.

<sup>7</sup>. Breast Cancer Update (2018). Canadian Task Force on Preventive Health Care. [accessed 2019 May 21]. <https://canadiantaskforce.ca/guidelines/published-guidelines/breast-cancer-update/>

<sup>8</sup>. National Health Service Breast Screening Programme Overview. GOV.UK. 2015 Jun 1 [accessed 2019 May 27]. <https://www.gov.uk/guidance/breast-screening-programme-overview>

<sup>9</sup>The Royal Australian College of General Practitioners. Guidelines for preventive activities in general practice. 9th edn, updated. East Melbourne, Vic: RACGP; 2018.

Author Manuscript

Author Manuscript

Author Manuscript

Author Manuscript