



Image Fusion Techniques: A Survey

Harpreet Kaur¹ · Deepika Koundal² · Virender Kadyan³

Received: 17 May 2020 / Accepted: 10 January 2021 / Published online: 24 January 2021
© CIMNE, Barcelona, Spain 2021

Abstract

The necessity of image fusion is growing in recently in image processing applications due to the tremendous amount of acquisition systems. Fusion of images is defined as an alignment of noteworthy Information from diverse sensors using various mathematical models to generate a single compound image. The fusion of images is used for integrating the complementary multi-temporal, multi-view and multi-sensor Information into a single image with improved image quality and by keeping the integrity of important features. It is considered as a vital pre-processing phase for several applications such as robot vision, aerial, satellite imaging, medical imaging, and a robot or vehicle guidance. In this paper, various state-of-art image fusion methods of diverse levels with their pros and cons, various spatial and transform based method with quality metrics and their applications in different domains have been discussed. Finally, this review has concluded various future directions for different applications of image fusion.

1 Introduction

Image fusion (IF) is an emerging field for generating an Infrmative image with the integration of images obtained by different sensors for decision making [1]. The analytical and visual image quality can be improved by integrating different images. Effective image fusion is capable of preserving vital Information by extracting all important Information from the images without producing any inconsistencies in the output image. After fusion, the fused image is more suitable for the machine and human perception. The first step of fusion is Image Registration (IR) in which source image is mapped with respect to the reference image. This type of

mapping is performed to match the equivalent image on the basis of confident features for further analysis. IF and IR are perceived as vital assistants to produce valuable Information in several domains [2]. According to the literature, the number of scientific papers has been increased dramatically since 2011 and reached to the peak 21,672 in 2019 which can be illustrated in Fig. 1. This fast-rising trend can be recognized due to the increased demand for high-performance image fusion techniques with low cost. Recently, various techniques like multi-scale decomposition and sparse representation have been introduced that bring several ways for improving the image fusion performance. There is a need for efficient fusion method due to variations between corresponding images in various applications. For instance, numerous satellites are increasing nowadays to acquire aerial images with diverse spectral, spatial and temporal resolutions in the domain of remote sensing. The IF is basically a collection of image Information achieved by several imaging parameters such as aperture settings or dynamic range, spectral response or position of the camera or the use of polarization filters. The Information of interest is extracted from different images with the help of appropriate image fusion methods which can further be used for traffic control, reconnaissance, driver assistance or quality assessment.

Various techniques of image fusion can be classified as pixel level, decision level and feature level. Pixel level techniques for image fusion directly integrate the Information from input images for further computer processing tasks

✉ Deepika Koundal
koundal@gmail.com

Harpreet Kaur
harpreet.kaur.045@gmail.com

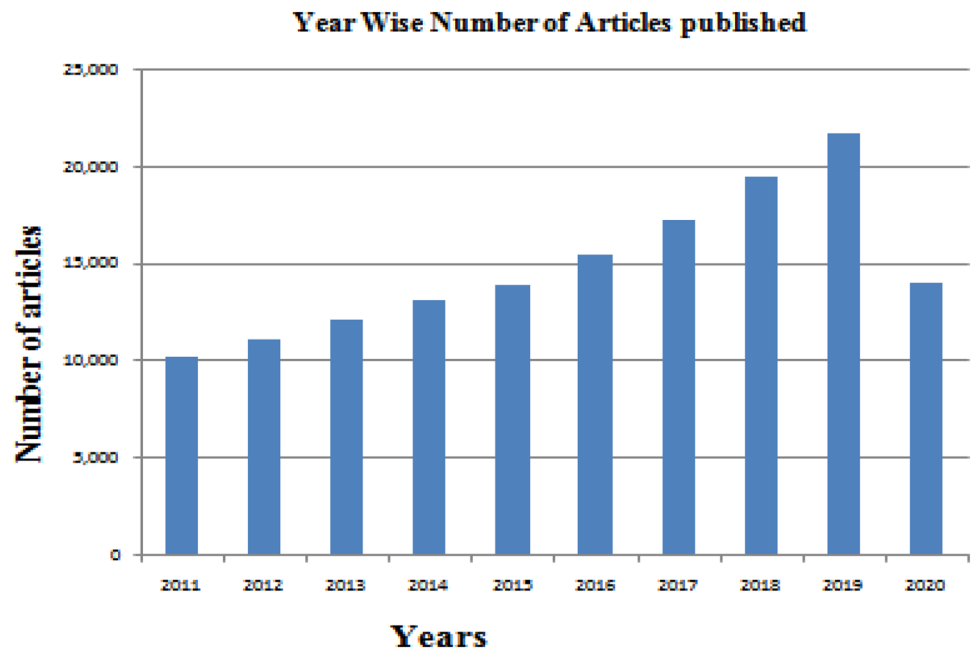
Virender Kadyan
vkadyan@ddn.upes.ac.in

¹ Department of Computer Science, Chitkara University
Institute of Engineering and Technology, Chitkara
University, Punjab, India

² Department of Virtualization, School of Computer
Science, University of Petroleum and Energy Studies,
Bidholi, Dehradun, India

³ Department of Informatics, School of Computer
Science, University of Petroleum and Energy Studies,
Bidholi, Dehradun, India

Fig. 1 According to the literature, the number of articles related to image fusion



[3]. Feature level techniques for image fusion entails the extractions of relevant features that is pixel intensities, textures or edges that are compounded to create supplementary merged features [4, 5]. In decision level fusion techniques for images, the input images are processed one at a time for the extraction of Information [4]. There are a variety of IF classifications based on the datasets such as multi-focus, multi-spectral, multi-scale, multi-temporal, and multi-sensor. In multi-focus techniques for image fusion, Information from several images of a similar scene is fused to get one composite image [6]. In addition, the multi-source and multi-sensor IF methods recommend superior features for representing Information which is not visible to a human visible system and are utilized for medical diagnosis applications. The Information generated from merged images can be employed for localization of abnormalities accurately [7]. The temporal modeling will give details of all clinical variables and reduce the risk of Information failure [8]. The fast-rising trend can be a major factor of image fusion techniques having low cost and high performance.

Currently, several techniques like sparse representation (SR) and multi-scale decomposition have been anticipated that help in enhancing the image fusion performance [3]. SR is a theory of image representation, which is employed to an image processing tasks such as interpolation, denoising, and recognition [1]. The multi-spectral (MS) image is used for remote sensing that merges their features to get an understandable image using the corresponding Information and spatiotemporal correlation [9]. IF has grown to be an influential solution by merging the images captured through diverse sensors. Images of diverse types such as infrared, visible, MRI and CT are superior input images for multimodal fusion [1]. Currently,

Deep learning is a very active topic in image fusion. It has gained great success in this area for solving different type of problems such as image processing and computer vision. It is widely used for image fusion [10]. Due to recent technological advancements, various imaging fusion techniques have been utilized in many applications including video surveillance, security, remote sensing, machine vision, and medical imaging.

Still there are number of challenges associated with image fusion which have to be explored. Moreover, an appropriate, accurate and reliable fusion technique is required for the various types of images for different domains that should be easily interpretable to obtain better results. Besides, image fusion techniques must be robust against uncontrollable acquisition conditions or inexpensive computation time in real-time systems as mis-registration is a major error found while fusing images. This paper presents an outline of various IF techniques with their applications in diverse domains. Also, various challenges, shortcomings, and benefits of image fusion techniques have been discussed.

Rest of the paper is organized in different sections. Section 2 discusses the image fusion process. Section 3 gives the various image fusion techniques. Section 4 presents the taxonomical view of the image fusion methods. Section 5 explains various image fusion applications. In Sect. 6, the evaluation metrics of fusion are discussed. Section 7 delivered the perceptive deliberations and prospects for future work. Finally, the papers with an outline of major ideas are concluded.

2 Image Fusion Process

As discussed earlier, the goal of IF is to produce a merged image with the integration of Information from more than one image. Figure 2 demonstrates the major steps involved in IF process. In wide-ranging, the registration is measured as an optimization issue which is used to exploit the similarity as well as to reduce the cost. The Image registration procedure is used to align the subsequent features of various images with respect to a reference image. In this procedure, multiple source images are used for registration in which the original image is recognized as a reference image and the original images are aligned through reference image. In feature extraction, the significant features of registered images are extracted to produce several feature maps.

By employing a decision operator whose main objective is to label the registered images with respect to pixel or feature maps, a set of decision maps are produced. Semantic equivalence obtained the decision or feature maps that might not pass on to a similar object. It is employed to connect these maps to a common object to perform fusion. This process is redundant for the source obtained from a similar kind of sensors. Then, radiometric calibration is employed on spatially aligned images. Afterward, the transformation of feature maps is performed on an ordinary scale to get end result in a similar representation format. Finally, IF merge the consequential images into a one resultant image containing an enhanced explanation of the image. The main goal of fusion is getting more Informative fused image [2].

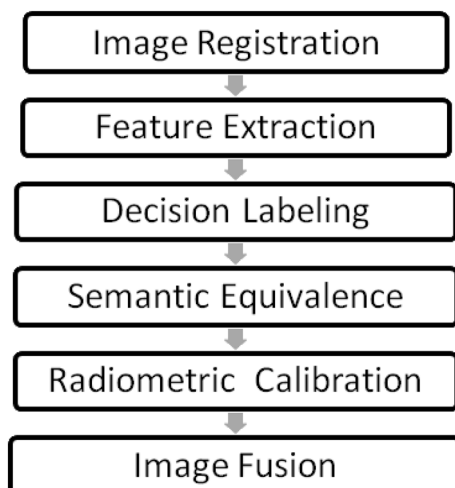


Fig. 2 The main steps of IF procedure

3 Image Fusion Techniques

IF techniques can be classify as spatial and frequency domain. The spatial technique deals with pixel values of the input images in which the pixels values are manipulated to attain a suitable outcome. The entire synthesis operations are evaluated using Fourier Transform (FT) of the image and then IFT is evaluated to obtain a resulting image. Other IF techniques are PCA, IHS and high pass filtering and brovey method [12].

Discrete transform fusion techniques are extensively used in image fusion as compared to pyramid based fusion technique. Different types of IF techniques are shown in Fig. 3 [13].

3.1 Spatial Based Techniques

The Spatial based technique is a simple image fusion method consist of Max–Min, Minimum, Maximum, Simple Average and Simple Block Replace techniques [14] [15]. Table 1 shows the diverse spatial domain based methods with their pros and cons.

3.1.1 Simple Average

It is a fusion technique used to combined images by averaging the pixels. This technique focused on all regions of the image and if the images are taken from the same type of sensor then it works well [16]. If the images have high brightness and high contrast then it will produce good results.

3.1.2 Minimum Technique

It selects the lowest intensity value of the pixels from images and produced a fused image [14]. It is used for darker images [17].

3.1.3 Maximum Technique

It selects the pixels values of high intensity from images to yield fused image [12].

3.1.4 Max–Min Technique

It selects the averaging values of the pixels smallest and largest from the entire source images and produced the resultant merged image.

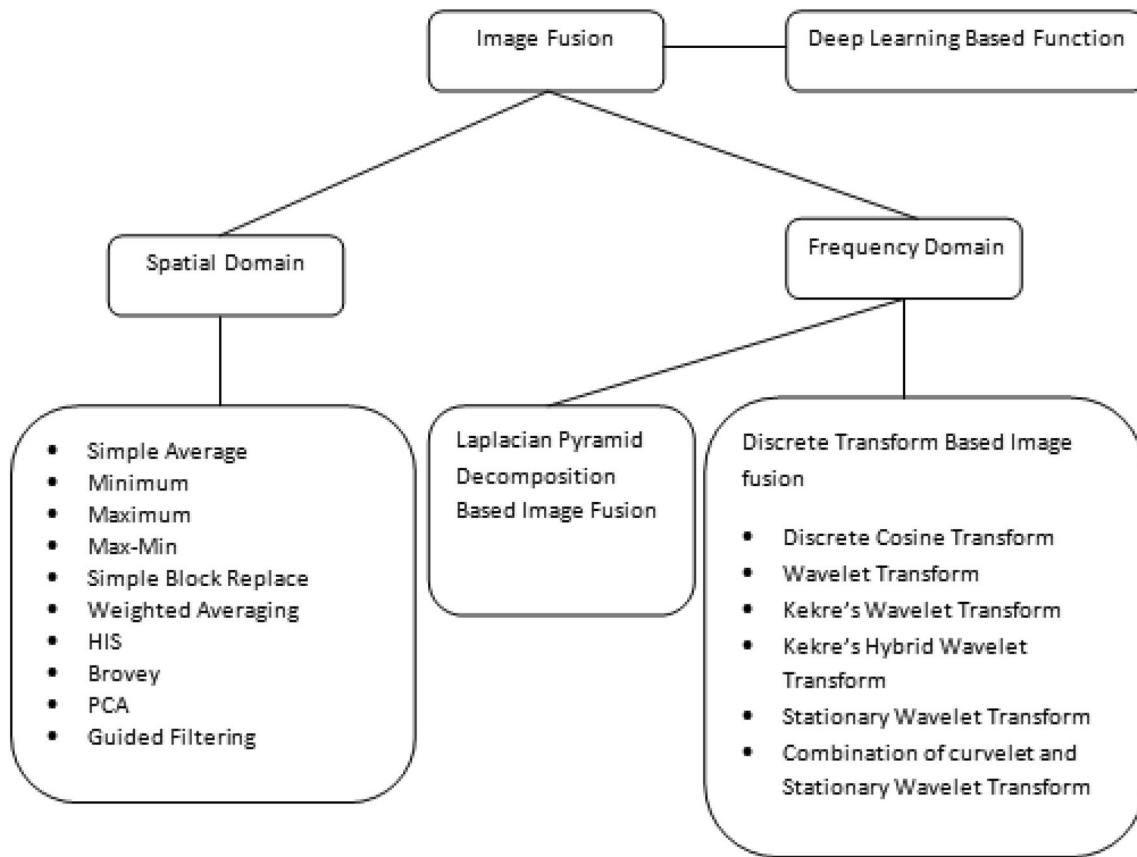


Fig. 3 Image Fusion Techniques

Table 1 shows the diverse spatial domain based methods with their pros and cons as per the literature review

Fusion Techniques	Advantages	Disadvantages
Averaging [14, 21] Minimum pixel value [14, 21] Simple block replacement [15] Maximum pixel value [14, 21] Max- min [15]	Simple, easy to recognize and implement	Decreases the image quality and reduces noise into final fused resultant image Produced blurred images. Not appropriate for real time applications
Weighted averaging [18]	Improves the detection reliability	Enhances the SNR
Principal component based analysis [22, 23]	Simple and more efficient, high spatial quality, lesser computational time	Resulted in color distortion and spectral degradation
Hue intensity saturation[21]	Efficient and simple. high sharpening ability and Fast processing	Color distortion
Brovey [14]	Extremely straightforward and more efficient method. Faster processing time. Gives Red–Green–Blue images with superior degree of contrast	Color distortion
Guided filtering[24]	It performs well in image smoothing or enhancement, flash or no-flash imaging, matting or feathering and joint upsampling	On the sparse inputs it is not directly applicable. It has a common drawback; it may have halos near some edges like other explicit filters

3.1.5 Simple Block Replace Technique

It adds all images of pixel values and takes the block average for it. It is based on pixel neighboring block images.

3.1.6 Weighted Averaging Technique

It assigned the weights to every pixel in the source images. The resultant image is produced by the weighted sum

of every pixel value in source images [18]. This method improves the detection reliability of the output image.

3.1.7 Hue Intensity Saturation (HIS)

It is a basic fusion color technique that converted the Red–Green–Blue image into HIS components and then intensity levels are divided with panchromatic (PAN) image. Spatial contains intensity Information and spectral contains both hue and saturation Information of the image. It performs in the bands and has three multispectral bands Red–Green–Blue (RGB) of low resolution. In the end, the inverse transformation is performed to convert the HIS space to the original RGB space for yielding fused image [12]. It is a very straightforward technique to combine the images features and provides a high spatial quality image. In remote sensing images it gives the best result and major drawback is that it involved only three bands [19].

3.1.8 Brovey Transform Method

Gillespie et al. suggested Brovey Transform in 1987. It is a straightforward technique for merging data from more than one sensor. It overcomes the three band problems. It standardized the three multispectral bands used for RGB to append the intensity and brightness into the image [13]. It includes an RGB color transform technique that is known as color normalization transform to avoid disadvantages of the multiplicative technique [12]. It is helpful for visual Interpretation but generates spectral distortion [19].

3.1.9 Principal Component Analysis (PCA)

It is a statistical method on the basis of orthogonal transformation for converting a set of observations of a possibly correlated variable into principal components that are set of linearly uncorrelated variables. The main drawback of PCA is spectral degradation and color distortion [9].

3.1.10 Guided filtering

It works as a boundary smoothing and preserving operator similar to the admired bilateral filter. It has enhanced performance near the boundaries. It has a hypothetical link with Laplacian matrix. It is a fast and non-estimated linear time algorithm, whose density is not dependent on the mask size. This filter is more efficient and effective in graphics and computer vision applications with joint upsampling, haze removal, detail smoothing and noise reduction [20]. IF is also used in medical domain to identify the various diseases. In which article, author perform experiment on brain images and prove that Guided filter provides better results as compared to Principal component analysis and multi-resolution singular value decomposition technique [161].

3.2 Frequency Domain

These techniques decomposed the multiscale coefficients from the input images [25]. Spatial distortion can be handled by the frequency method. Table 2 lists the various frequency domain based methods with their pros and cons.

Table 2 shows the diverse frequency domain based methods with their pros and cons as discussed by several authors

Fusion Techniques	Advantages	Disadvantages
Laplacian/Gaussian pyramid [27, 28] Low pass pyramid ratio [29] Morphological pyramid [28] Gradient pyramid [30] Filter subtract decimate [30]	Provides better image quality of a representation for multi focus images	Provide almost same result. Number of breakdown levels affects the IF results
Discrete cosine transform (DCT) [38]	Decomposed images into series of waveform and used for real time applications	Low quality fused image
Discrete wavelet technique with Haar fusion [39]	Produced better quality of fused image with good SNR. Reduced the spectral distortion	Merged image has fewer spatial resolutions
Kekre's wavelet transform fusion [43, 44]	Used for any size of images and its final fused result is more Infrmative	Computationally complex
Kekre's hybrid wavelet based transform fusion [45, 46]	It gives better results	It cannot be used images integer power of two
Stationary wavelet transform (SWT) [35–37]	Give better result at level 2 of decomposition	Time consuming process
Stationary wavelet transform (SWT) and Curvelet Transform	Suitable for real time applications	Very time consuming process

3.2.1 Laplacian Pyramid Fusion Technique

It uses the interpolation sequence and Gaussian pyramid for multi-resolution analysis for image fusion. Saleem et al. have reported an improved IF technique using a contrast pyramid transform on multi-source images [151]. But it is suffered by the drawback of extraction ability which can be overcome by multi-scale decomposition. Further, Li et al. improved the gradient pyramid multi-source IF method which attains high band coefficient with the help of gradient direction operator [9].

3.2.2 Discrete Transform Fusion Method [14]

Discrete transform based fusion take composite images. Firstly, if the images are colored then RGB (Red–Green–Blue) components of the multiple images are separated subsequently, discrete transformation on images is applied and then the average of multiple images is computed an inverse transformation is applied at the end to obtain a fused image. DWT (Discrete wavelets transform) is a better IF method as compared to other fusion methods like Laplacian pyramid method, Curvelet transforms method etc [26].

3.2.3 Discrete Cosine Transform (DCT)

In image fusion, DCT has various types like DCT_{ma} (DCT magnitude), DCT_{cm} (DCT contrast measure), DCT_{ch} (DCT contrast highest), DCT_e (DCT energy) and DCT_{av} (DCT average) [29]. This technique does not give a better result with the size of the block less than 8×8 . In the DCT domain, DCT_{av} is straightforward and basic method of image fusion. DCT_e and DCT_{ma} methods performed well in image fusion. This technique is straightforward and used in factual time applications.

3.2.4 Discrete Wavelet Transform (DWT) Method

DWT method decomposes the two or more images into various high and low-frequency bands [31]. This method minimized the spectral distortion in the resultant fused images by producing the good signal to noise ratio with fewer spatial resolution as compared to the pixel-based method. Wavelet fusion performed superior to the spatial domain fusion method with respect to minimizing the color distortions [15].

3.2.5 Kekre's Wavelet Transform (KWT) Method

Kekre's Wavelet Transform method is obtained from Kekre's transforms [32]. It can generate KWT matrices of $((2N) \times (2N))$, $((3N) \times (3N))$, ..., $((N_2) \times (N_2))$ from Kekre's

transform method matrix [33]. It can be used for more than one images and the fused image is far good than other methods.

3.2.6 Kekre's Hybrid Wavelet Transform (KHWT) Method

KHWT method has been derived from hybrid wavelet transforms. Many authors suggested that kekre-hadamard wavelet method gives more brightness. Hybrid kekre-DCT wavelet method gives good results. In this method, the best two matrices are combined into a hybrid wavelet transforms method. It cannot be used images integer power of two [45].

3.2.7 Stationary Wavelet Transform (SWT) Method

DWT method has a disadvantage of translation invariance and Stationary Wavelet Transform overcome this problem [34]. This technique provides a better output at decomposition level 2 and time inefficient process [35] [36] [37]. SWT derived from DWT method. It is a new type of wavelet transform method with translation invariance. It provides enhanced analysis of image facts. The next second invention curvelet transform method is additionally suitable for 2-D image edges.

3.2.8 Curvelet Transform Method

SWT has a better characteristic in time–frequency. It can achieve well result for devising in smooth. The second generation Curvelet is a new multi-scale transform; it breaks the disadvantages of wavelet method in representing directions of boundaries in the image [11, 40–42].

3.3 Deep Learning

Another technique which is most widely used for image fusion is Deep Learning in various domains. Several deep learning based image fusion methods have been presented for multi-focus image fusion, multi-exposure image fusion, multi-modal image fusion, multi-spectral (MS) image fusion, and hyper-spectral (HS) image fusion, showing various advantages. Various recent advances related to deep learning based image are discussed in [10]. In another way, deep learning and case-based reasoning techniques are used with image fusion to enhance the outcome of segmentation. In this article, author used artificial intelligence to improve the results of segmentation and its implementation done on kidney and tumour images. This process complete in three layers: Fusion layer, Segmentation layer, Data layer [159]. The multi-view deep learning model is also used in Covid-19 for validation and testing sets of chest CT images. It is more helpful to identify the diagnosis problem. Data is collected from various

hospitals of china [160]. The reasons behind the popularity of deep learning based methods for image fusion are presented as that deep learning model are able to extract the most elective features automatically from data without any human intervention. These models are also able to characterize various complex relationships between targeting data and input. Deep learning models are gaining popularity in providing potential image representation approaches which could be useful to the study of image fusion. Commonly used deep learning models in image fusion are Convolutional Neural Network (CNN), Convolutional Sparse Representation (CSR) and Stacked Autoencoder (SAE). Table 3. listed the various advantages and disadvantages of deep learning based image fusion methods.

4 Image Fusion categorization

It is the process which integrates the source image and reference image into one image. Diverse techniques were anticipated by different authors to achieve the required fusion objective. A Single sensor, multi-sensor, multi-modal, multi-view, multi-focus, and multi-temporal illustrates major classes of such methods which are discussed below.

4.1 Single Sensor

A number of images are merged to produce a fused image with the best possible Information. For instance, human operators are not able to perceive desired objects in lighting variant and noisy environment which can be highlighted in the end fused image. The inadequacy of this type of system is due to imaging sensors that are used in many sensing areas. The resolution of images is limited by the sensors and the conditions in which the system is operated in its dynamic range. Such as visible band sensor (digital camera) is appropriate for illuminated day-light scenes but is not appropriate for the badly illuminated

nighttime environment or under fog or rain that is unfavorable conditions [47].

4.2 Multi Sensors

Multi-sensor IF overpowers the confines of a one sensor IF by integration of images from a number of sensors to form a compound image. An infrared (IR) camera accompanies the digital camera to obtain the final image from individual images. The infrared camera is suitable in inadequate illuminated environments and the digital camera is suitable for day-light views. It is used in machine vision, a military area such as in medical imaging, robotics and object detection. It is mostly used to resolve the merged Information of the numerous images [47]. According to the literature review, Table 4 shows the various Multi-sensors techniques discussed by several authors.

4.3 Multi-view Fusion

Multi-view images have diverse views at the similar time. It is also known as Mono-modal fusion [47]. The existing methods didn't achieve acceptable performances in all cases, especially when one of the estimations is not high-quality; in this case, they are unable to discard it [49, 86, 152]. According to the literature review, Table 5 shows the various Multi-view techniques discussed by several authors.

4.4 Multi-modal Fusion

It is the process of integrating multi-modal images from one or more imaging modalities to enhance the quality of an image. The various models are multispectral, panchromatic, infrared, remote sensing and visible images. Table 6 evident the various Multi-modal techniques discussed by several authors according to the literature review.

4.5 Multi-focus Fusion

It is an efficient method for integrating the Information from several images with a similar sight into a wide-ranging image. The compound image is more Informative than

Table 3 shows deep learning based image fusion methods

Fusion Techniques	Advantages	Disadvantages
CNN [153–156]	Able to extract features and representation can learn most elective features from training data without any human intervention	High computational cost
CSR [157]	Compute sparse representation of an entire image shift-invariant representation approach elective in details preservation less sensitive to mis-registration	Need a lot of training data
SAE [158]	Two phase based training mechanism have a high potential when the scale of labeled data for supervised learning is limited	If you don't have a good GPU they are quite slow to train (for complex tasks)

Table 5 Multi-View image fusion techniques reported in literature

Authors	Neural networks classification		Wavelet classifications				Contourlet classifications			Other classifications										
	CNN	KNN	WT	DWT	DCT	CT	NSCT	PSNR	DVC	LSFM	AVG	SNR	PCA	KPCA	SVM	FUZZY	ICA	TP	TMIP	
Petrazuoli [67]					P			P												
Cheung [68]								P												
Gelman [69]				P				P												
Maughey [70]					P				P											P
Artigas [71]								P												
Jose L [72]			P	P					P											
C. Guillemat [73]								P												
Guo [74]			P		P				P											
Wang [75]					P				P											
Rajpoot [76]				P							P									
Forre [77]												P								P
Zhang [78]													P							
Yongpeng Li [79]																				
Frederic Dufaux [80]					P										P					
Das [81]																				
Swoger [82]					P															
Seng [83]																				
Rahul Kavi [84]																				P
Kiska [85]																				
Liu [81]																				

Here p represents the literature review on different fields in various categorizations by different authors

CNN, Convolution neural network, KNN, K nearest neighbor, PSNR, Peak signal to noise ratio, LSFM, Light sheet fluorescence microscopy, AVG, Averaging, SNR, Signal to noise ratio, KPCA, Kernel principal component analysis, TP, Temporal projection, TMIP, Temporal motion interpolation projection, SVM, Support vector machines, DVC, Distributed video coding, ICA, Independent component analysis

Table 6 Multi-Modal image fusion techniques reported in literature

Authors	Neural networks clas-sifications				Wavelet based classifications							Contourlet based classifi-cations				Other classifications			
	NN	PCNN	ANN	ANN	WT	DWT	SWT	CWT	MWT	DDWD	DTCWT	CT	NSCT	PSO	PCA	Avg	Entropy	Fuzzy logic	
Wei li et al. [87]	P																		
Yong et al. [88]													P						
Max et al. [89]	P																		
Kor et al. [90]					P														
Deron et al. [91]					P														
Zhao et al. [92]	P																		
Richa et al. [93]						P													
Guihong Qu et al. [94]					P														
Wang et al. [95]					P														
Sharmila et al. [96]						P									P			P	
Rajiv et al. [97]							P		P			P							
Bhavana et al. [98]					P														
Anitha et al. [99]					P														
Anjali et al. [100]					P														
Periyavattam et al. [101]																			
Pradeep et al. [102]																			
Guruprasad et al. [103]										P								P	
Kiran et al. [104]					P														
Anna et al. [95]					P														
Gaurav et al. [105]					P														
Amir et al. [106]					P														
Devanna et al.[107]					P														
Senthil et al.[105]					P														

Here p represents the literature review on different fields in various categorizations by different authors
 CWT, Complex wavelet transform, DDWD, Dual-tree wavelet transform, PSO, Particle swarm optimization, MWT, Wavelet transform

Table 7 Multi-Focus fusion techniques reported in literature

Authors	Neural networks classifications					Wavelet based classifications					Contourlet based clas-sifications					Other classifications																																							
	ANN					DWT					CWT					NSCT					PCA					Fuzzy					Entropy					HIS					EOG					HMM					Avg				
	P	P	P	P	P	P	P	P	P	P	P	P	P	P	P	P	P	P	P	P	P	P	P	P	P	P	P	P	P	P	P	P	P	P	P	P	P	P	P	P															
Maruthi [4]																																																							
Wang [95]																																																							
Bhatnagar [105]																																																							
Anish [108]																																																							
Li [109]																																																							
Wang [110]																																																							
Li [111]																																																							
Huang [112]																																																							
Garg [113]																																																							
Kaur [114]																																																							
Kaur [115]																																																							
Liu [116]																																																							
Malhotra [117]																																																							
Sulaiman [118]																																																							
Li [119]																																																							
Haghigha [120]																																																							
Tian [121]																																																							
Yang [122]																																																							
Malik [123]																																																							
Chai [124]																																																							
Qu [125]																																																							
Maruthi [126]																																																							

Here p represents the literature review on different fields in various categorizations by different authors

SPCNN, Standard PCNN, LSW, Lifting stationary wavelet, MWT, Wavelet transform, DDWD, Dual-tree wavelet transform, EOG, Energy of image gradient, HMM, Hidden markov modeling, PSO, Particle swarm optimization

Table 8 Multi-Temporal fusion techniques reported in literature

Authors	Neural networks classifications	Wavelet based classifications				Contourlet based classifications		Other classifications												
		DWT	DT-DWT	SI-DWT	CT	NSCT	PCA	HIS	CSS	CVA	SVM	ICC	PCC	CD	LDP	PSNR	OCE	FUZZY	ENTROPY	HPF
Anitha [127]		P				P												P		
Pawar [128]																		P		
Parthiban [129]		P	P																	P
Momeni [130]		P			P				P									P		
Han Pan [131]		P	P	P		P											P			P
Silivana [132]																				
Jain [133]		P																		
Ferretti [134]																				
Peijun Du [135]		P								P								P		P
Wang [136]																				
Mittal [137]		P																		P
Wisetphamichkij [138]		P																		
Visalakshi [139]		P																		
Bovalo [140]																				
Liu [141]																				
Celik [142]		P	P																	
Xiaojun Yang [143]																				
Bruzzone [144]																				
Demir [145]																				
Zhong [146]																				

Here p represents the literature review on different fields in various categorizations by different authors

CSS, Content selection strategy, CVA, Change vector analysis, SVM, Support vector machine, ICC, Iterative compound classification, PCC, Post classification comparison, CD, Change detection, LDP, Local derivative pattern, OCE, Overall cross entropy, HPF, High pass filter

input images [6]. It gives better visual quality of an image. According to the literature review, Table 7 shows the various Multi-focus techniques discussed by several authors.

4.6 Multi-temporal Fusion

Multi-temporal fusion captures the same scene at different times. Long and short-term observations are required because of the estimation of the occurrence of changes on the ground. Because of the revisit observation satellites, remote sensing images are obtained at diverse times for a given area. Multi-temporal images are vital for detecting land surface variations in broad geographical areas. According to the literature review; Table 8 shows the various Multi-temporal techniques discussed by several authors.

5 Main Applications in Diverse Domains

In current years, IF has been widely used in many different applications such as medical diagnosis, surveillance, photography and remote sensing. Here, various challenging and issues are discussed related to different fields [3].

5.1 Remote Sensing Applications

In accumulation to the modalities discussed above, it has numerous IF techniques such as Synthetic Aperture Radar, ranging and light detection and moderate resolution imaging spectroradiometer that have been useful in IF applications. Byun et al. have given the area based IF scheme for combining panchromatic, multispectral and synthetic aperture radar images [1]. Temporal data fusion and high spatial approach is used to produce synthetic Landsat imagery by combining Landsat and moderate resolution imaging spectroradiometer

data [1]. Moreover, the synthesis of air-borne hyper-spectral and Light Detection and Ranging (LiDAR) data is researched recently by a combination of spectral Information. Various datasets have been provided by Earth imaging satellites like Quickbird, Worldview-2, and IKONOS for the applications of pansharpening. Co-registered hyper-spectral and multispectral images are more complex to obtain as compared to multispectral and panchromatic images. Moreover, air-borne hyper-spectral data and LiDAR are accessible. For occurrence, the IEEE Geoscience and Remote Sensing Society Data Fusion 2013 and 2015 Contests have distributed numerous hyper-spectral, color and light detection and ranging data for research purposes. In this field application, numbers of satellites are mounted to acquire remote sensing images with diverse spatial, temporal and spectral resolutions. Moreover, in this field, classification and change detection has been providing by Google Maps or Earth products that are effectively applied to construct the imagery seen. This is a supplementary difficult problem as compared with pansharpening, the multichannel multispectral image contains both spatial Information and spectral Information. Therefore, pansharpening is unsuitable or incompetent for the IF of hyperspectral and multispectral images. The foremost challenge in this domain is accomplished as below:

- (1) *Spatial and spectral distortions* The image datasets frequently reveal variations in spatial and spectral structures which causes more distortions with spatial or spectral artifacts during image fusion.
- (2) *Mis-registration* The next most important challenge in this domain is how to decrease the misregistration rate. The remote sensing input images are regularly obtained from diverse times, acquisitions or spectral bands. Even the panchromatic and multispectral datasets provided by a similar platform, the one or more sensors may not

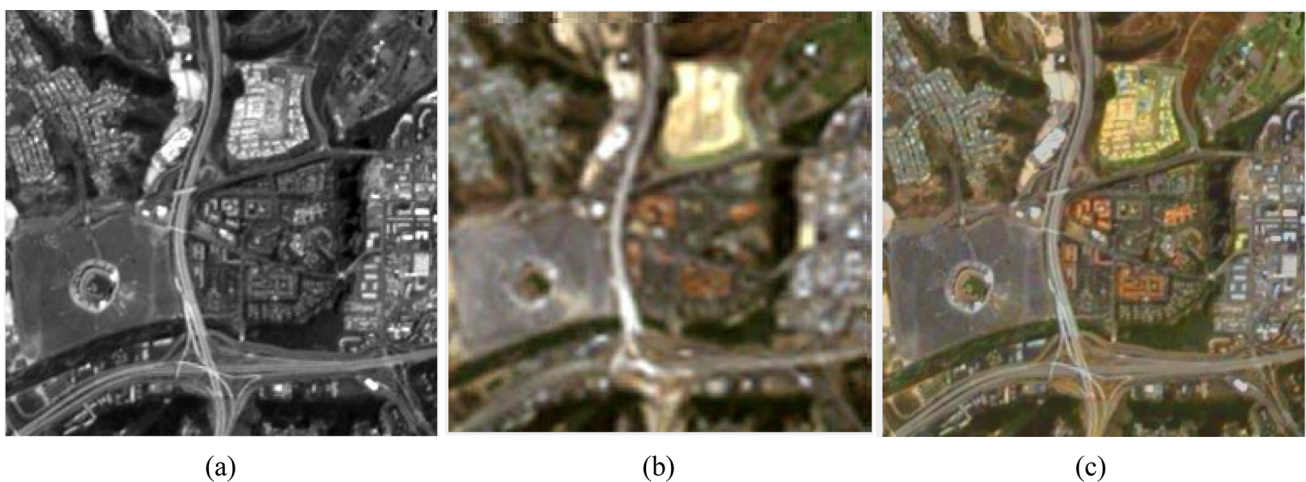


Fig. 4 Examples of IF in remote sensing domain. a PAN b MS c Fused image

give accurate results in the same direction; their gaining moments may be different. Therefore, in order to resolve this, prior to IF, the images are required to be registered. Conversely, registration is the challenging process because of the variations between input images as they are provided with diverse acquisitions. Figure 4 shows the fusion of Panchromatic and Multi-spectral images that is achieved by the Principal Component Analysis (PCA) transformation correspondingly.

5.2 Medical Domain Applications

Harvard Medical School has provided a brain image dataset of registered Computerized Tomography and Magnetic Resonance Imaging. Figure 6 shows an example of IF in medical diagnosis by fusing CT and MRI. The CT is used for capturing the bone structures with high spatial resolutions and MRI is used to capture the soft tissue structures

like the heart, eyes, and brain. The CT and MRI can be used collectively with IF techniques to enhance accuracy and sensible medical applicability. The main challenging of this field is also accomplished as below.

- (1) *Lack of medical crisis oriented IF methods* The main motive of IF is to assist the improved clinical results. The clinical crisis is still a big challenge and nontrivial tasks in the medical field.
- (2) *Objective image fusion performance estimate* The main difficulty in this domain is how to evaluate the IF performance. There are diverse clinical issues of IF, which preferred the IF effect may be fairly dissimilar.
- (3) *Mis-registration* The inaccurate registration of objects suffered from poor performance in the medical domain. Figure 5 illustrates the fusion of MRI and CT images. In this, the fusion of images is achieved by the guided filtering based technique with image statistics.

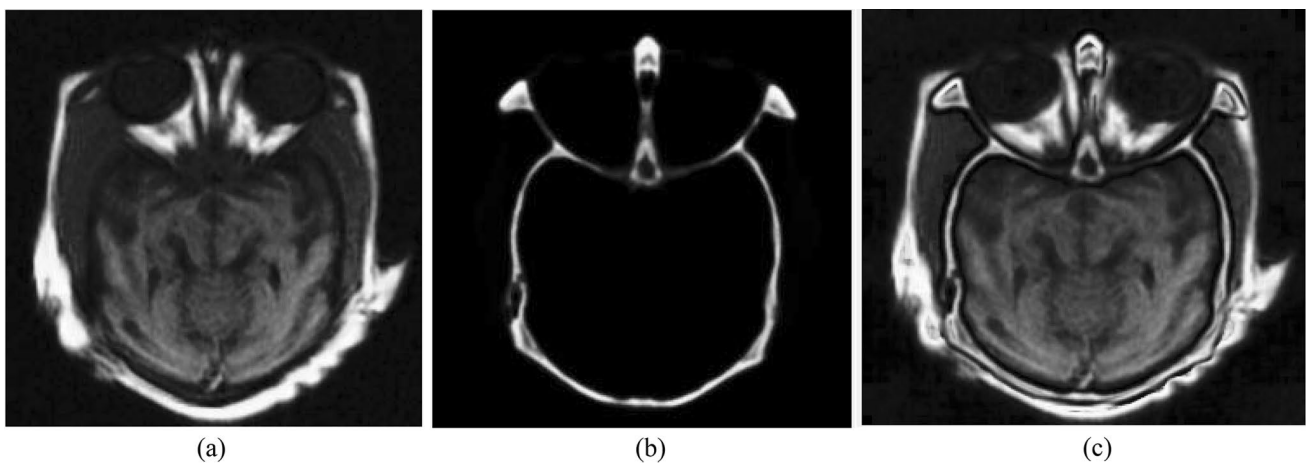


Fig. 5 Examples of IF in medical diagnosis domain. **a** MRI **b** CT **c** Fused image

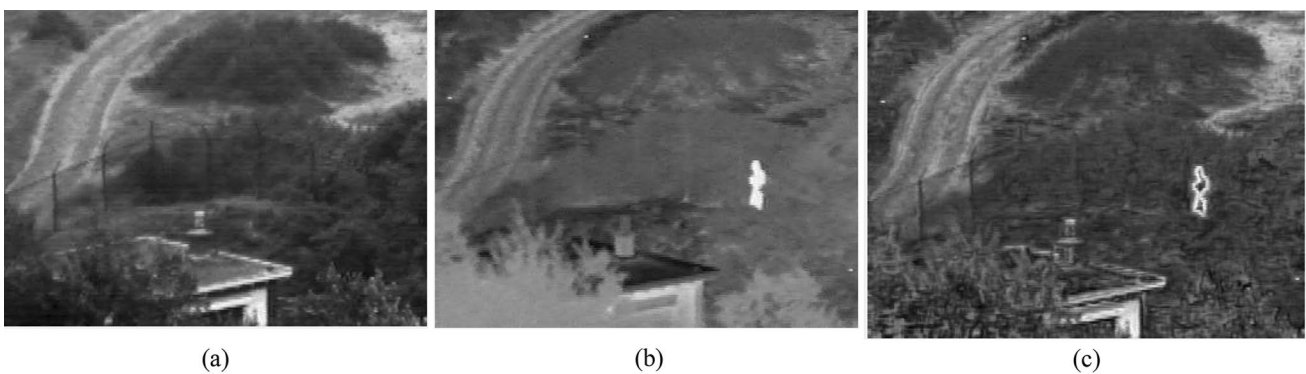


Fig. 6 Examples of IF in surveillance domain. **a** Visible image **b** Infrared image **c** Fused image

5.3 Surveillance Domain Applications

Figure 6 shows examples of IF in the surveillance domain that is infrared and visible images fusion. Its high temperature makes it able to “see in the night” even without enlightenment as it is sensitive to objects. Infrared images give bad spatial resolution and it can be overcome by fusion technique by the visible and infrared image. Moreover, the fusion of visible and infrared images has been introduced for another surveillance domain problem in face recognition, image dehazing, and military reconnaissance. The main challenges of in this domain are as:

- (1) *Computing efficiency* In this domain, effective IF algorithms should merge the Information of innovative images to get the final resultant image. Other prominently, in these domains usually engages continuous real-time monitoring.
- (2) *Imperfect environmental conditions* The major difficulty in this field, the images may be acquired at imperfect circumstances. Due to the weather and enlightenment condition, the input images may contain under-exposure and serious noise. Fusion of visible and infrared image is shown in Fig. 6a, b. In this outline, the fusions of both images are achieved by the guided filtering and image statistics.

5.4 Photography Domain Applications

Figure 7 shows examples of IF in the photography domain, the fusion of multi-focus images. It is not possible for all objects with diverse distances from camera due to its restricted depths to be all-in-focus within a single shot of cameras. Due to the restricted depths of the camera, it is

not possible to be all-in-focus within a single shot of cameras for all objects with diverse distances. To overcome this, the multi-focus IF method is used to merge several images with a similar scene having diverse focus points for generating an all-in-focus resultant image. This resultant compound image can well defend the significant Information from the source image. It is more desirable in several image processing tasks and machine vision. In Fig. 8, the data sources used in the photography domain. The various challenges which are faced in this domain are:

- (1) *Effect of moving target objects* In this domain, multi-exposure and multi-focus images are constantly provided by diverse times. In these circumstances, during the capturing process moving objects may become visible in diverse locations. The moving objects might produce inconsistencies into the fused image.
- (2) *Relevance in consumer electronics* In this, images are taken from numerous shots with diverse settings of the camera. The challenge is to combine the multi-exposure and multi-focus IF methods into consumer electronics to produce a compound image of high quality in real-time. IF of multi-focus images (Back-focus image and Fore-focus image) is shown in Fig. 7a, b. In this outline, IF of multi-focus images is achieved by guided filtering based technique and image.

5.5 Applications in Other Domains

Many other applications that are used for fusion like object recognition, tracking, object detection etc.

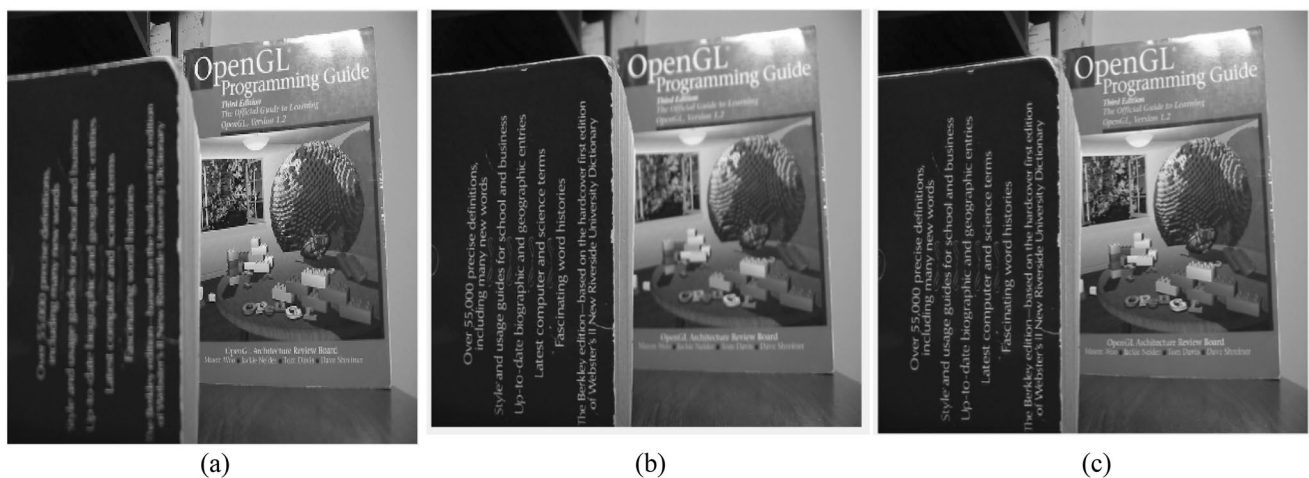


Fig. 7 Examples of IF in photography domain. **a** Back-focus Image **b** Fore-focus image **c** Fused image

5.6 Recognition Application

In an image one or more objects are visible. The main aim of recognition is to recognize the objects clearly. Face recognition is a major application in this domain. Recognition algorithm used infrared and visible IF method. It has two types to recognize the image. In the first type, first fused the images after that recognize its objects. In the next type, it is embedded with the reorganization process, and it is proposed by Faten et al. It can help for improving the recognition precision with the help of narrowband and enhancement the fusion results.

5.7 Detection and Tracking Application

Detection and tracking are used in infrared and visible IF. It is used in real-life applications: fruit detection, object detection. It determines the accurate place of the objects at a similar time. Detection fusion algorithm can be differentiated into two classes, in the first class detect the objects before fusing and in the second class, fuse the images before detecting objects. He et al. introduced an algorithm with multilevel image fusion and it enhanced the target detection of the object. Pixel and feature level image fusion is also considered in this method and it shows the relationship between high and low-frequency information, which is ignored in the wavelet transform IF. The main motive of this method is to enhance target visibility.

Target tracking algorithm is similar to the detection algorithm. It should determine the relationship between the frames of the target objects in a particular time sequence. Stephen et al. introduced an enhanced target tracking approach through visible and infrared IF by using PCA-weighted fusion rule. In most of the algorithms: detection, recognition and tracking are independent to each other which is designed to recover the features or visibility of the actual images [4].

5.8 Performance Evaluation Measure

A number of performance evaluation metrics have been anticipated to evaluate the performances of diverse IF techniques. They can be categorized as subjective and objective assessment measures [52]. Subjective assessment measures play an important role in IF as it evaluates the fused image quality based on human visual perception. It can compare various fusion techniques and methods according to standards like image details, image distortion, and object competence. In the infrared and visible IF subjective evaluation is more popular and reliable. Its disadvantages are high cost, time-consuming, irreproducibility and human intervention. Objective assessment is carried out to quantify the fused image quality quantitatively. It is not biased by observers and

highly consistent with visual perception. It's arriving from diverse types, which are based on image gradient, similar structure, information theory, human visual perception and statistics [1]. A number of metrics for quantifying the quality of fused images is presented in this survey. Some other evaluation measures of fused images are divided into two groups. Evaluation measures are further categorized as a reference and non-reference evaluation measures. Evaluation measures based on the reference image are given below.

- i. The mean of the square error (MSE) computes the error and the real differentiation between the ideal or expected results [1, 147]. This metric is defined as follows:

$$MSE = \frac{1}{mn} \sum_{i=1}^m \sum_{j=1}^n (A_{ij} - B_{ij})^2 \quad (1)$$

where A and B is the ideal and compound image respectively that can be evaluated, i and j is the pixel row and column index respectively, m and n is the height and width of image implying the numeral or pixel rows and columns respectively.

- ii. The Structural similarity index metric (SSIM) quantifies the similarity between one or more images. It is designed by modeling any contrast distortion and radiometric. It is a combination of the luminance image distortion and the combination of contrast distortion, loss correlation and structure distortion between source images and the final image [1, 11, 147–150]. This metric is defined as follows:

$$SSIM(x, y) = \frac{(2\mu_x\mu_y + c_1)(2\sigma_{xy} + c_2)}{(\mu_x^2 + \mu_y^2 + c_1)(\sigma_x^2 + \sigma_y^2 + c_2)} \quad (2)$$

where the μ_x average of x , μ_y the average of y , σ_x^2 the variance of x , σ_y^2 the variance of y , σ_{xy} the covariance of x and y , c_1 and c_2 two variables to stabilize the division with the weak denominator

- iii. The peak signal to noise ratio (PSNR) is used to compute the ratio of peak power and noise value power [1, 11, 147, 149, 150]. This metric is defined as follows:

$$PSNR = 10 \log_{10} \left\{ \frac{r^2}{MSE} \right\} \quad (3)$$

Here, r indicates the peak value of the fused image. If the PSNR value is high that means fused image closer to the input image and less distortion in the fusion method

- iv. Erreur Relative Globale Adimensionnelle de Synthese employed to quantify the image quality from the fusion of high spatial resolution images. This method

is introduced by Lucien Wald [148, 151]. This metric is defined as follow:

$$ERGAS = 100 \frac{h}{l} \sqrt{\frac{1}{N} \sum_{k=1}^N RMSE(B_k)^2 / (M_k)^2} \quad (4)$$

where h and l show the size of the PAN and MS images, N indicates the total number of pixels in the fused image. M_k is the mean radiance value of the MS image for the B_k band [151]

- v. Overall cross entropy (OCE) is used to determine the difference between one or more source images to get a fused image. If the OCF value is smaller, it means it provide better results [11, 12]. This metric is defined as follow:

$$OCE(f_A, f_B; F) = CE(f_A; F) + CE(f_B; F) / 2 \quad (5)$$

Here CE indicates the cross-entropy of the images, it effects the entropy of two source images f_A and f_B and F is fused image

- vi. Visual Information fidelity (VIF) is used to measure the distortions of images. It includes blur, local or global contrast changes and additive noises [1, 150]. This metric is defined as follow:

$$VIF = \text{Distorted image information} / \text{Reference image information} \quad (6)$$

- vii. Mutual Information provides the Information quantity detail of source images, which are merged in the resultant image. The highest Mutual Information represents the effectiveness of the IF technique [1, 11, 141, 150, 151]. This is defined as follows

$$MI_{AF} = \sum_{a,f} P_{A,F}(a,f) \log \left[\frac{P_{AF}(a,f)}{P_A(a)P_F(f)} \right] \quad (7)$$

where $P_A(a)$ and $P_F(f)$ denote the marginal histogram of input image A and the fused image is F. $P_{A,F}(a,f)$ indicate joint histogram of input image A and fused image is F. if mutual Information value is high it means fusion performance is good

- viii. Spectral Angle Mapper (SAM) calculates spectral similar content between original and final fused images by looking between two vectors at the angle [21]. This metric is defined as follow:

$$\alpha = \cos^{-1} \left(\frac{\sum_{i=1}^b t_i r_i}{\left(\sum_{i=1}^b t_i^2 \right)^{1/2} \left(\sum_{i=1}^b r_i^2 \right)^{1/2}} \right) \quad (8)$$

Here, b is denoted the number of bands and t_i and r_i stand for an i^{th} band of test and reference images

- ix. Signal to noise Ratio (SNR) is used to determine the noise. The larger the signal to noise value enhanced the resultant compound image [11, 12]. This metric is defined as follow:

$$SNR = 10 \log_{10} \left\{ \frac{\sum_{x=1}^P \sum_{y=1}^Q (I_r(x,y))^2}{\sum_{x=1}^P \sum_{y=1}^Q (I_r(x,y) - I_f(x,y))^2} \right\} \quad (9)$$

where $I_r(x,y)$ indicates the intensity of the pixel of the estimated image and $I_f(x,y)$ indicates the intensity of the pixel of the source image. If the signal to noise value is high it means estimation error is small and better performance in the fusion.

Non-reference image quality evaluation measures which do not need reference image are given below.

- i. Standard Deviation (SD) spread the data in the whole image [1, 151]. This metric is defined as follow:

$$SD = \sqrt{\sum_{i=1}^m \sum_{j=1}^n (h(i,j) - \bar{H})^2} \quad (10)$$

where \bar{H} denotes the mean value of fused image. If the value of SD is high that means fused images achieve a good visibility effect.

- ii. Spatial Frequency error (SFE) is a quantitative measure to objectively assess the superiority of the final the fused image [149]. This is defined as follow:

$$SFE = \frac{SF_f - SF_r}{SF_r} \quad (11)$$

where SF_f -SF of the fused image, SF_r -SF of the reference image.

- iii. Entropy (EN) is used to evaluate the Information content of an image and it produce sensitive noise in the image. Image with large Information content has low cross entropy [1, 11, 12, 149, 151]. This metric is defined as follow:

$$EN = - \sum_{l=0}^{L-1} p_l \log_2 p_l \quad (12)$$

where, L is denotes the total number of gray levels and p_l denotes the normalized histogram of the corresponding gray level in the IF. If the EN value is higher it means it contains more Information and better performance in the image fusion.

- iv. The universal image quality index (UIQI) is motivated by Human Visual System. It is based on the structural

Information of final fused resultant images with the combination of loss of correlation, contrast distortion, and luminance distortion [11, 150]. This metric is defined as follow:

$$UIQI = \frac{\sigma_{I_1 I_F}}{\sigma_{I_1} \sigma_{I_F}} \cdot \frac{\mu_{I_1 I_F}}{(\mu_{I_1})^2 + (\mu_{I_F})^2} \cdot \frac{2\sigma_{I_1 \times \sigma_{I_F}}}{(\sigma_{I_1})^2 + (\sigma_{I_F})^2} \quad (13)$$

where σ is variance, μ is the average.

- v. Fusion mutual Information metric evaluates the degree of dependence of the one or more images. It is based on Mutual Information (MI) and measures the feature Information which is transformed from input image to fused image. It enhanced the image quality [1, 11]. This metric is defined as follow:

$$FMI = MI_{A,F} + MI_{B,F} \quad (14)$$

where A, B are input images and F is the fused image. If FMI value is high it indicates that considerable Information transfer from input to the fused image.

- vi. Spatial frequency (SF) is an image quality index it's called spatial row frequency (RF) and column frequency (CF) based on horizontal and vertical gradients. The Spatial frequency evaluation metric can calculate the gradient distribution of an image effectively and it gives more texture detail of the image [1, 11, 150, 151]. This metric is defined as follow:

$$SF = \sqrt{RF^2 + CF^2} \quad (15)$$

$$RF = \sqrt{\sum_{i=1}^M \sum_{j=1}^N (F(i,j) - F(i,j-1))^2} \quad (16)$$

$$CF = \sqrt{\sum_{i=1}^M \sum_{j=1}^N (F(i,j) - F(i-1,j))^2} \quad (17)$$

where F is a fused image. A fused image with high SF contain the rich edges and textures Information.

- vii. The large Mean gradient (MG) measurement implies that the composite image capture the rich edges and textures Information. Its fusion performance is better [1, 149]. This metric is defined as follow:

$$MG = \frac{1}{(M-1)(N-1)} \times \sum_{x=1}^{M-1} \sum_{y=1}^{N-1} \sqrt{((F(x,y) - F(x-1,y))^2 + (F(x,y) - F(x,-1y))^2)/2} \quad (18)$$

where F is a final fused image.

- ix. Average Difference (AD) is the propositional value of the differentiation between the actual or ideal data. [147]. This metric is defined as follow:

$$AD = \frac{1}{mn} \sum_{i=1}^m \sum_{j=1}^n |(A_{ij} - B_{ij})| \quad (19)$$

- ix. Average Gradient (AG) measurement is used to measure the gradient Information of the composite image. It provides the texture detail of an image [1, 150, 151]. The AG metric is defined as follow:

$$AG = \frac{1}{MN} \sum_{i=1}^M \sum_{j=1}^N \sqrt{\frac{\nabla F_x^2(i,j) + \nabla F_y^2(i,j)}{2}} \quad (20)$$

If AG metric value is high that means it contains more gradient Information and better performance in the fused algorithm.

- x. Normalized cross correlation (NCC) is employed to determine similar content between input and fused image [147]. This metric is defined as follow:

$$NCC = \frac{\sum_{i=1}^m \sum_{j=1}^n (A_{ij} * B_{ij})}{\sum_{i=1}^m \sum_{j=1}^n (A_{ij}^2)} \quad (21)$$

- xi. Mean absolute error (MAE) of the related pixels in original and final fused images [11]. This is defined as follow:

$$MAE = \frac{1}{N^2} \sum_{i=1}^M \sum_{j=1}^N |s(i,j) - y(i,j)| \quad (22)$$

- xii. Normalized Absolute Error (NAE) is a quality measure that normalized the error value with respect to the expected or ideal value. It is provide the dissimilarity between the actual and desired outcome which is further divided by the sum of the expected values [147]. This metric is defined as follow:

$$NAE = \frac{\sum_{i=1}^m \sum_{j=1}^n |(A_{ij} - B_{ij})|}{\sum_{i=1}^m \sum_{j=1}^n (A_{ij})} \quad (23)$$

- xiii Correlation determines the correlation between referenced and resultant image. If the reference image and

resultant image value are one it means both images are exactly the same and if it is less than one it means both images have more dissimilarity [11].

6 Discussion

Despite the various constraints which are handled by several researchers, still number of research and development in the field of image fusion is growing day by day. Image fusion has several open-ended difficulties in different domains. The main aim is to discuss the current challenges and future trends of image fusion that arise in various domains, such as surveillance, photography, medical diagnosis, and remote sensing are analyzed in the fusion processes. This paper has discussed various spatial and frequency domain methods as well as their performance evaluation measures. Simple image fusion techniques cannot be used in actual applications. PCA, hue intensity saturation and Brovey methods are computationally proficient, high-speed and extremely straightforward but resulted in distortion of color. Images fused with Principal component analysis have a spatial advantage but resulted in spectral degradation. The guided filtering is an easy, computationally efficient method and is more suitable for real-world applications. The number of decomposition levels affects the pyramid decomposition in image fusion outcome. Every algorithm has its own advantages and disadvantages. The main challenge faced in remote sensing field is to reduce the visual distortions after fusing panchromatic (PAN), hyperspectral (HS) and multi-spectral (MS) images. This is because source images are captured using different sensors with similar platform but do not focus on a same direction as well as their gaining moments are not exactly the same. The dataset and its accessibility represent a restriction that is faced by many researchers. The progress of image fusion has increased its interest in colored images and its enhancement. The aim of color contrast enhancement is to produce an appealing image with bright color and clarity of the visual scene. Recently, researchers have used neutrosophy in image fusion, used to remove noise and to enhance the quality of single photon emission tomography (SPET), computed tomography (CT), magnetic resonance imaging (MRI), and positron emission tomography (PET) image. This integration of neutrosophy with image fusion resulted in noise reduction and better visibility of the fused image. Deep learning is the rising trend to develop the automated application. It extremely applied in various applications such as face recognition, speech recognition, object detection and medical imaging. The integration of quantitative and qualitative measures is the accurate way to determine which particular fusion technique is better for certain application. The various challenges which generally are faced by researchers is to design image transformation and fusion strategies. Moreover, the lack of effective image representation approaches and widely recognized fusion

evaluation metrics for performance evaluation of image fusion techniques is also of great concern. Whereas the recent progresses in machine learning and deep learning based image fusion shows a huge potential for future improvement in image fusion.

7 Conclusion

Recently, the area of image fusion is attracting more attention. In this paper, various image fusion techniques with their pros and cons, different methods with state-of-art has been discussed. Different applications like medical image, remote sensing, photography and surveillance images have been discussed with their challenges. Finally, the different evaluation metrics for image fusion techniques with or without reference has been discussed. Therefore, it is concluded from survey that each image fusion technique is meant for a specific application and can be used in various combinations to obtain better results. In future, new deep neural networks based image fusion methods will be developed for various domains to improve the efficiency of fusion procedure by implementing the algorithm with parallel computing unit.

Compliance with Ethical Standards

Conflict of Interest There is no conflict of interest.

References

1. Ma J, Ma Y, Li C (2019) Infrared and visible image fusion methods and applications: a survey. *Inf Fus* 1(45):153–178
2. El-Gamal FE, Elmogy M, Atwan A (2016) Current trends in medical image registration and fusion. *Egyptian Inform J* 17(1):99–124
3. Li S, Kang X, Fang L, Hu J, Yin H (2017 Jan) Pixel-level image fusion: a survey of the state of the art. *Inf Fus* 1(33):100–112
4. Maruthi R, Lakshmi I (2017) Multi-focus image fusion methods—a survey. *Comput Eng* 19(4):9–25
5. Meher B, Agrawal S, Panda R, Abraham A (2019) A survey on region based image fusion methods. *Inf Fus* 1(48):119–132
6. Liu Z, Chai Y, Yin H, Zhou J, Zhu Z (2017) A novel multi-focus image fusion approach based on image decomposition. *Inf Fus* 1(35):102–116
7. James AP, Dasarthy BV (2014) Medical image fusion: a survey of the state of the art. *Inf Fus* 1(19):4–19
8. Madkour M, Benhaddou D, Tao C (2016) Temporal data representation, normalization, extraction, and reasoning: a review from clinical domain. *Comput Methods Programs Biomed* 1(128):52–68
9. Bai L, Xu C, Wang C (2015) A review of fusion methods of multi-spectral image. *Optik-Int J Light Electron Optics* 126(24):4804–4807
10. Liu Y, Chen X, Wang Z, Wang ZJ, Ward RK, Wang X (2018) Deep learning for pixel-level image fusion: recent advances and future prospects. *Inf Fus* 1(42):158–173

11. Du J, Li W, Lu K, Xiao B (2016) An overview of multi-modal medical image fusion. *Neurocomputing* 26(215):3–20
12. Morris C, Rajesh RS (2014) Survey of spatial domain image fusion techniques. *Int J Adv Res Comput Sci Eng Inf Technol* 2(3):249–254
13. Mishra D, Palkar B (2015) Image fusion techniques: a review. *Int J Comput Appl* 130(9):7–13
14. Jasiunas MD, Kearney DA, Hopf J, Wigley GB (2002) Image fusion for uninhabited airborne vehicles. In: 2002 IEEE International conference on field-programmable technology, 2002. (FPT). Proceedings, p 348–351. IEEE
15. Dong J, Dafang Z, Yaohuan H, Jinying F (2011) Survey of multispectral image fusion techniques in remote sensing applications. In: Zheng Y (ed) *Image fusion and its applications*. Alcorn State University, USA
16. Banu RS (2011) Medical image fusion by the analysis of pixel level multi-sensor using discrete wavelet Transform. In: Proceedings of the national conference on emerging trends in computing science, p 291–297
17. Bavachan B, Krishnan DP (2014) A survey on image fusion techniques. *IJRCCCT* 3(3):049–052
18. Song L, Lin Y, Feng W, Zhao M (2009) A novel automatic weighted image fusion algorithm. In: 2009. ISA 2009. International Workshop on Intelligent Systems and Applications, p 1–4
19. Singh N, Tanwar, P (2012) Image fusion using improved contourlet transform technique. *Int J Recent Technol Eng (IJRTE)*, vol 1, no. 2
20. He K, Sun J, Tang X (2010) Guided image filtering. European conference on computer vision. Springer, Berlin, pp 1–14
21. Harris JR, Murray R, Hirose T (1990) IHS transform for the integration of radar imagery with other remotely sensed data. *Photogramm Eng Remote Sens* 56(12):1631–1641
22. Smith LI (2002) A tutorial on principal components analysis. *Statistics* 51(1):52
23. Li S, Kang X, Hu J (2013) Image fusion with guided filtering. *IEEE Trans Image Process* 22(7):2864–2875
24. Sadjadi F (2005) Comparative image fusion analysis. In: 2005 Computer society conference on computer vision and pattern recognition-workshops (CVPR'05)-Workshops, p 8–8. IEEE
25. Yang J, Ma Y, Yao W, Lu WT (2008) A spatial domain and frequency domain integrated approach to fusion multifocus images. *The International archives of the photogrammetry, remote sensing and spatial Inf sciences*, 37(PART B7).
26. Wu D, Yang A, Zhu L, Zhang C (2014) Survey of multi-sensor image fusion. International conference on life system modeling and simulation. Springer, Berlin, pp 358–367
27. Olkkonen H, Pesola P (1996) Gaussian pyramid wavelet transform for multiresolution analysis of images. *Graphic Models Image Process* 58(4):394–398
28. Ramac LC, Uner MK, Varshney PK, Alford MG, Ferris DD (1998) Morphological filters and wavelet-based image fusion for concealed weapons detection. In *Sensor Fusion: Architectures, Algorithms, and Applications II* vol 3376, p 110–120. International Society for Optics and Photonics.
29. Toet A (1989) Image fusion by a ratio of low-pass pyramid. *Pattern Recogn Lett* 9(4):245–253
30. Burt PJ (1992) A gradient pyramid basis for pattern-selective image fusion. *Proc SID* 1992:467–470
31. Chandrasekhar C, Viswanath A, NarayanaReddy S (2013) FPGA Implementation of image fusion technique using DWT for micro air vehicle applications. 4(8): 307–315
32. Krishnamoorthy S, Soman KP (2010) Implementation and comparative study of image fusion algorithms. *Int J Comput Appl* 9(2):25–35
33. Kekre HB, Sarode T, Dhannawat R (2012) Kekre's wavelet transform for image fusion and comparison with other pixel based image fusion techniques. *Int J Comput Sci Inf Secur* 10(3):23–31
34. Klein LA (1993) Society of photo-optical instrumentation engineers (SPIE) 405 fieldston road Bellingham. United States, WA
35. Borwonwatanadelokd P, Rattanapitak W, Udomhunsakul S (2009) Multi-focus image fusion based on stationary wavelet transform and extended spatial frequency measurement. In: 2009 International Conference on Electronic Computer Technology, p 77–81. IEEE
36. Udomhunsakul S, Yamsang P, Tumthong S, Borwonwatanadelok P (2011) Multiresolution edge fusion using SWT and SFM. *Proc World Congr Eng* 2:6–8
37. Kannan K, Perumal SA, Arulmozhi K (2010) Performance comparison of various levels of fusion of multi-focused images using wavelet transform. *Int J Comput Appl* 1(6):71–78
38. Naidu VPS (2012) Discrete cosine transform based image fusion techniques. *J Commun, Navig Signal Process* 1(1):35–45
39. Singh R, Khare A (2013) Multiscale medical image fusion in wavelet domain. *Sci World J* 1–10. <https://doi.org/10.1155/2013/521034>
40. Mallat S (1999) *A wavelet tour of signal processing*. Academic press, Elsevier
41. Pajares G, De La Cruz JM (2004) A wavelet-based image fusion tutorial. *Pattern Recogn* 37(9):1855–1872
42. Burrus CS, Gopinath RA, Guo H, Odegard JE, Selesnick IW (1998) *Introduction to wavelets and wavelet transforms: a primer*, vol 1. Prentice hall, New Jersey
43. Kekre HB, Athawale A, Sadavarti D (2010) Algorithm to generate Kekre's Wavelet transform from Kekre's Transform. *Int J Eng Sci Technol* 2(5):756–767
44. Kekre HB, Sarode T, Dhannawat R (2012) Implementation and comparison of different transform techniques using Kekre's wavelet transform for image fusion. *Int J Comput Appl* 44(10):41–48
45. Dhannawat R, Sarode T (2013) Kekre's Hybrid wavelet transform technique with DCT WALSH HARTLEY and kekre's transform for image fusion. *Int J Comput Eng Technol (IJCET)* 4(1):195–202
46. Kekre HB, Sarode T, Dhannawat R (2012) Image fusion using Kekre's hybrid wavelet transform. In: 2012 International Conference on Communication, Information & Computing Technology (ICCICT), p 1–6
47. Sharma M (2016) A review: image fusion techniques and applications. *Int J Comput Sci Inf Technol* 7(3):1082–1085
48. Paramanandham N, Rajendiran K (2018) Infrared and visible image fusion using discrete cosine transform and swarm intelligence for surveillance applications. *Infrared Phys Technol* 88:13–22
49. Ehlers M, Klonus S, Astrand PJ (2008) Quality assessment for multi-sensor multi-date image fusion. In: Proceedings of the XXIIth International Congress ISPRS, p 499–506.
50. Choi Y, Latifi S (2012) Contourlet based multi-sensor image fusion. In: Proceedings of the 2012 International Conference on Information and Knowledge Engineering IKE, vol 12, p 16–19
51. Ross WD, Waxman AM, Streilein WW, Aguiar M, Verly J, Liu F, Rak S (2000) Multi-sensor 3D image fusion and interactive search. In: 2000. FUSION 2000. Proceedings of the Third International Conference on Inf Fusion, vol 1, p TUC3–10
52. Li M, Cai W, Tan Z (2006) A region-based multi-sensor image fusion scheme using pulse-coupled neural network. *Pattern Recogn Lett* 27(16):1948–1956
53. Nirmala DE, Vignesh RK, Vaidehi V (2013). Fusion of multi-sensor images using nonsubsampling contourlet transform and

- fuzzy logic. In: 2013 IEEE International conference on fuzzy systems (FUZZ) p 1–8
54. Pohl C, Van Genderen JL (1998) Review article multisensor image fusion in remote sensing: concepts, methods and applications. *Int J Remote Sens* 19(5):823–854
 55. Kumar U, Mukhopadhyay C, Ramachandra TV (2009) Fusion of multisensor data: review and comparative analysis. In: 2009. GCIS'09. WRI Global Congress on Intelligent Systems. vol 2, p 418–422, IEEE
 56. Subhas AM Multi sensor data fusion for sensor validation. *International Journal of Advanced Computer Technology (IJACT)*, Survey Paper ISSN:2319–7900.
 57. Makode PN, Khan J (2017) A review on multi-focus digital image pair fusion using multi-scale image. *Wavelet Decomposition* 3(1):575–579
 58. Chang NB, Bai K, Imen S, Chen CF, Gao W (2016) Multi-sensor satellite image fusion and networking for all-weather environmental monitoring. *IEEE Syst J* 12(2):1341–1357
 59. Hall DL, Llinas J (1997) An introduction to multisensor data fusion. *Proc IEEE* 85(1):6–23
 60. Kumar NS, Shanthi C (2007) A survey and analysis of pixel level multisensor medical image fusion using discrete wavelet transform. *IETE Tech Rev* 24(2):113–125
 61. Panwar SA, Malwadkar S (2015) A review: image fusion techniques for multisensor images. *Int J Adv Res Electr, Electr Instrum Eng* 4(1):406–410
 62. Lemeshevsky GP (1999) Multispectral multisensor image fusion using wavelet transforms. In *Visual information processing VIII*, vol. 3716, p 214–223. International Society for Optics and Photonics
 63. Deng C, Cao H, Cao C, Wang S (2007) Multisensor image fusion using fast discrete curvelet transform. In: *MIPPR 2007: Remote sensing and GIS data processing and applications and innovative multispectral technology and applications*, vol. 6790, p 679004. International Society for Optics and Photonics
 64. Li H, Manjunath BS, Mitra SK (1995) Multisensor image fusion using the wavelet transform. *Graphic Models Image Process* 57(3):235–245
 65. Zheng Y, Zheng P (2010) Multisensor image fusion using a pulse coupled neural network. *International conference on artificial intelligence and computational intelligence*. Springer, Berlin, pp 79–87
 66. Li Y, Song GH, Yang SC (2011) Multi-sensor image fusion by NSCT-PCNN transform. *Int Conf Comput Sci Automat Eng (CSAE)* 4:638–642
 67. Petrazzuoli G, Cagnazzo M, Pesquet-Popescu B (2013) Novel solutions for side Information generation and fusion in multi-view DVC. *EURASIP J Adv Signal Process* 2013(1):154
 68. Cheung G, Ortega A, Cheung NM (2011) Interactive streaming of stored multiview video using redundant frame structures. *IEEE Trans Image Process* 20(3):744–761
 69. Gelman A, Dragotti PL, Velisavljević V (2011) Interactive multiview image coding. In: 2011 18th IEEE international conference on image processing (ICIP), p 601–604
 70. Maugey T, Miled W, Cagnazzo M, Pesquet-Popescu B (2009) Fusion schemes for multiview distributed video coding. In: 2009 17th European signal processing conference. p 559–563
 71. Artigas X, Angeli E, Torres L (2006) Side Information generation for multiview distributed video coding using a fusion approach. In: *Proceedings of the 7th nordic signal processing symposium-NORSIG 2006*, p 250–253, IEEE
 72. Rubio-Guivernau JL, Gurchenkov V, Luengo-Oroz MA, Duloquin L, Bourgine P, Santos A, Ledesma-Carbayo MJ (2011) Wavelet-based image fusion in multi-view three-dimensional microscopy. *Bioinformatics* 28(2):238–245
 73. Guillemot C, Pereira F, Torres L, Ebrahimi T, Leonardi R, Ostermann J (2007) Distributed monoview and multiview video coding. *IEEE Signal Process Mag* 24(5):67–76
 74. Guo X, Lu Y, Wu F, Gao W, Li S (2006) Distributed multiview video coding. *Vis Commun Image Process (VCIP)* 6077:60770T
 75. Wang RS, Wang Y (2000) Multiview video sequence analysis, compression, and virtual viewpoint synthesis. *IEEE Trans Circuits Syst Video Technol* 10(3):397–410
 76. Rajpoot K, Noble JA, Grau V, Szmigielski C, Becher H (2009) Multiview RT3D echocardiography image fusion. *International conference on functional imaging and modeling of the heart*. Springer, Berlin, pp 134–143
 77. Ferre P, Agraftotis D, Bull D (2007) Fusion methods for side information generation in multi-view distributed video coding systems. In: 2007 IEEE International conference on image processing ICIP, vol 6, p VI-409. IEEE
 78. Zhang ZG, Bian HY, Song ZQ, Xu H (2014) A multi-view sonar image fusion method based on nonsubsampling contourlet transform and morphological modification. *Appl Mech Mater* 530:567–570
 79. Li Y, Liu H, Liu X, Ma S, Zhao D, Gao W (2009) Multi-hypothesis based multi-view distributed video coding. In: 2009. PCS 2009 Picture coding symposium. p. 1–4
 80. Dufaux F (2011) Support vector machine based fusion for multi-view distributed video coding. In: 2011 17th International conference on digital signal processing (DSP), p 1–7
 81. Das R, Thepade S, Ghosh S (2015) Content based image recognition by Information fusion with multiview features. *Int J Inf Technol Comput Sci* 7(10):61–73
 82. Swoger J, Verveer P, Greger K, Huisken J, Stelzer EH (2007) Multi-view image fusion improves resolution in three-dimensional microscopy. *Opt Express* 15(13):8029–8042
 83. Seng CH, Bouzerdoum A, Tivive FHC, Amin MG (2010) Fuzzy logic-based image fusion for multi-view through-the-wall radar. In: 2010 International conference on digital image computing: techniques and applications (DICTA), p 423–428
 84. Kavi R, Kulathumani V, Rohit F, Kecojovic V (2016) Multiview fusion for activity recognition using deep neural networks. *J Electron Imaging* 25(4):043010
 85. Kisku DR, Mehrotra H, Rattani A, Sing JK, Gupta P (2009) Multiview Gabor face recognition by fusion of PCA and canonical covariate through feature weighting. In: *Applications of Digital Image Processing XXXII* (vol 7443, p 744308). International Society for Optics and Photonics.
 86. Liu K, Kang G (2017) Multiview convolutional neural networks for lung nodule classification. *Int J Imaging Syst Technol* 27(1):12–22
 87. Li W, Zhu XF (2005) A new algorithm of multi-modality medical image fusion based on pulse-coupled neural networks. *International conference on natural computation*. Springer, Berlin, pp 995–1001
 88. Viergever MA, van den Elsen PA, Stokking R (1992) Integrated presentation of multimodal brain images. *Brain Topogr* 5(2):135–145
 89. Rodrigues D, Virani HA, Kutty S (2014) Multimodal image fusion techniques for medical images using wavelets. *Image* 2(3):310–313
 90. Yang Y, Que Y, Huang S, Lin P (2016) Multimodal sensor medical image fusion based on type-2 fuzzy logic in NSCT domain. *IEEE Sens J* 16(10):3735–3745
 91. Kor S, Tiwary U (2004) Feature level fusion of multimodal medical images in lifting wavelet transform domain. In: 2004 26th Annual international conference of the IEEE engineering in medicine and biology society IEMBS'04, vol. 1: p 1479–1482. IEEE

92. Zhao Y, Zhao Q, Hao A (2014) Multimodal medical image fusion using improved multi-channel PCNN. *Bio-Med Mater Eng* 24(1):221–228
93. Singh R, Vatsa M, Noore A (2009) Multimodal medical image fusion using redundant discrete wavelet transform. In: 2009 Seventh international conference on advances in pattern recognition ICAPR'09, p 232–235. IEEE
94. Qu G, Zhang D, Yan P (2001) Medical image fusion by wavelet transform modulus maxima. *Opt Expr* 9(4):184–190
95. Wang A, Sun H, Guan Y (2006) The application of wavelet transform to multi-modality medical image fusion. In: 2006. Proceedings of the IEEE International conference on networking, sensing and control ICNSC'06, p 270–274. IEEE
96. Sharmila K, Rajkumar S, Vijayarajan V (2013) Hybrid method for multimodality medical image fusion using discrete wavelet transform and entropy concepts with quantitative analysis. In: 2013 International conference on communications and signal processing (ICCS), p 489–493
97. Singh R, Khare A (2014) Fusion of multimodal medical images using Daubechies complex wavelet transform—a multiresolution approach. *Inf Fus* 19:49–60
98. Bhavana V, Krishnappa HK (2015) Multi-modality medical image fusion using discrete wavelet transform. *Procedia Comput Sci* 70:625–631
99. Anitha S, Subhashini T, Kamaraju M (2015) A novel multimodal medical image fusion approach based on phase congruency and directive contrast in NSCT domain. *Int J Comput Appl* 129(10):30–35
100. Pure AA, Gupta N, Shrivastava M (2013) An overview of different image fusion methods for medical applications. *Int J Sci Eng Res* 4(7):129
101. Gomathi PS, Kalaavathi B (2016) Multimodal medical image fusion in non-subsampled contourlet transform domain. *Circuits Syst* 7(8):1598–1610
102. Patil MPP, Deshpande KB (2015) New technique for image fusion using DDWT and PSO in medical field. *Int J Rec Innov Trends Comput Commun* 3(4):2251–2254
103. Guruprasad S, Kurian MZ, Suma HN (2013) A medical multimodality image fusion of CT/PET with PCA, DWT methods. *J Dental Mater Tech* 4(2):677–681
104. Parmar K, Kher RK, Thakkar FN (2012) Analysis of CT and MRI image fusion using wavelet transform. In: 2012 International conference on communication systems and network technologies (CSNT), p 124–127
105. Bhatnagar G, Wu QJ, Liu Z (2013) Directive contrast based multimodal medical image fusion in NSCT domain. *IEEE Trans Multimed* 15(5):1014–1024
106. Al-Bakrei AFP (2012) Brian image fusion of MRI-CT multimodality systems using DWT and hybrid enhancement fusion algorithms. *J Babylon Univ/Eng Sci* 20(1):258–269
107. Swathi PS, Sheethal MS, Paul V (2016) Survey on multimodal medical image fusion techniques. *Int J Sci, Eng Comput Technol* 6(1):33
108. Anish A, Jebaseeli TJ (2012) A Survey on multi-focus imagefusion methods. *Int J Adv Res Comput Eng Technol (IJARCET)* 1(8):319–324
109. Li H, Chai Y, Yin H, Liu G (2012) Multifocus image fusion and denoising scheme based on homogeneity similarity. *Optics Commun* 285(2):91–100
110. Wang Z, Ma Y, Gu J (2010) Multi-focus image fusion using PCNN. *Pattern Recogn* 43(6):2003–2016
111. Li S, Kwok JT, Wang Y (2002) Multifocus image fusion using artificial neural networks. *Pattern Recogn Lett* 23(8):985–997
112. Huang W, Jing Z (2007) Multi-focus image fusion using pulse coupled neural network. *Pattern Recogn Lett* 28(9):1123–1132
113. Garg R, Gupta P, Kaur H (2014) Survey on multi-focus image fusion algorithms. In: 2014 Recent Advances in Engineering and Computational Sciences (RAECS), p 1–5
114. Kaur G, Kaur P (2016) Survey on multifocus image fusion techniques. In: International conference on electrical, electronics, and optimization techniques (ICEEOT), p 1420–1424
115. Kaur P, Sharma ER (2015) A study of various multi-focus image fusion techniques. *Int J Comput Sci Info Technol* 6(5):1139–1146
116. Liu L, Bian H, Shao G (2013) An effective wavelet-based scheme for multi-focus image fusion. In 2013 IEEE International conference on mechatronics and automation (ICMA), p 1720–1725
117. Malhotra G, Chopra DV (2014) Improved multi-focus image fusion using ac-dct, edge preserving smoothing & DRSHE. In: Proceedings of international conference on computer science, cloud computing and applications, p 24–25
118. Sulaiman M (2016) A survey on various multifocus image fusion techniques. *Int J Sci Technol Eng IJSTE* 3(5):107–111
119. Li Q, Du J, Song F, Wang C, Liu H, Lu C (2013) Region-based multi-focus image fusion using the local spatial frequency. In: 2013 25th Chinese control and decision conference (CCDC), p 3792–3796
120. Haghighat MBA, Aghagolzadeh A, Seyedarabi H (2011) Multi-focus image fusion for visual sensor networks in DCT domain. *Comput Electr Eng* 37(5):789–797
121. Tian J, Chen L (2012) Adaptive multi-focus image fusion using a wavelet-based statistical sharpness measure. *Signal Process* 92(9):2137–2146
122. Yang Y (2011) A novel DWT based multi-focus image fusion method. *Procedia Eng* 24:177–181
123. Malik AS (ed) (2011) Depth map and 3D imaging applications: algorithms and technologies: algorithms and technologies. Hershey, IGI Global
124. Chai Y, Li H, Li Z (2011) Multifocus image fusion scheme using focused region detection and multiresolution. *Optics Commun* 284(19):4376–4389
125. Qu X, Yan J (2007). Multi-focus image fusion algorithm based on regional firing characteristic of pulse coupled neural networks. In: 2007 BIC-TA 2007 Second international conference on bio-inspired computing: theories and applications, p 62–66
126. Maruthi R, Sankarasubramanian K (2007) Multi focus image fusion based on the Inf level in the regions of the images. *J Theor Appl Inf Technol* 3(4):80–85
127. Anitha AJ, Vijayasangeetha S (2016) Building change detection on multi-temporal VHR SAR image based on second level decomposition and fuzzyrule. *Int J* 4(7)
128. Pawar TA (2014) Change detection approach for images using image fusion and C-means clustering algorithm. *Int J* 2(10):303–307
129. Parthiban L (2014) Fusion of MRI and CT images with double density dual tree discrete wavelet transform. *Int J Comput Sci Eng Technol* 5(2):168–172
130. Momeni S, Pourghassem H (2014) An automatic fuzzy-based multi-temporal brain digital subtraction angiography image fusion algorithm using Curvelet transform and content selection strategy. *J Med Syst* 38(8):70
131. Pan H, Jing Z, Liu R, Jin B (2012) Simultaneous spatial-temporal image fusion using Kalman filtered compressed sensing. *Opt Eng* 51(5):057005
132. Dellepiane SG, Angiati E (2012) A new method for cross-normalization and multitemporal visualization of SAR images for the detection of flooded areas. *IEEE Trans Geosci Remote Sens* 50(7):2765–2779
133. Jan S (2012) Multi temporal image fusion of earthquake satellite images. *Int J Adv Res Comput Sci* 3(5)

134. Ferretti R, Dellepiane S (2015) Color spaces in data fusion of multi-temporal images. *International conference on image analysis and processing*. Springer, Cham, pp 612–622
135. Du P, Liu S, Xia J, Zhao Y (2013) Inf fusion techniques for change detection from multi-temporal remote sensing images. *Inf Fusion* 14(1):19–27
136. Wang B, Choi J, Choi S, Lee S, Wu P, Gao Y (2017) Image fusion-based land cover change detection using multi-temporal high-resolution satellite images. *Remote Sens* 9(8):804
137. Mittal M (2015) Hybrid image fusion using curvelet and wavelet transform using PCA and SVM. *Int J Sci Emerg Technol Latest Trends* 22(1):28–35
138. Wisetphanichkij S, Dejhan K, Cheevasuvit F, Mitatha S, Netbut C (1999) Multi-temporal cloud removing based on image fusion with additive wavelet decomposition. *Faculty of Engineering and Research Center for Communication and Inf Technology*.
139. Visalakshi S (2017) Multitemporal image fusion based on stationary wavelet transform and change detection using LDP analysis. *International Journal of Engineering Science and Computing*, p 14082
140. Bovolo F (2009) A multilevel parcel-based approach to change detection in very high resolution multitemporal images. *IEEE Geosci Remote Sens Lett* 6(1):33–37
141. Liu S, Bruzzone L, Bovolo F, Du P (2015) Hierarchical unsupervised change detection in multitemporal hyperspectral images. *IEEE Trans Geosci Remote Sens* 53(1):244–260
142. Celik T, Ma KK (2011) Multitemporal image change detection using undecimated discrete wavelet transform and active contours. *IEEE Trans Geosci Remote Sens* 49(2):706–716
143. Yang X, Chen L (2010) Using multi-temporal remote sensor imagery to detect earthquake-triggered landslides. *Int J Appl Earth Obs Geoinf* 12(6):487–495
144. Bruzzone L, Serpico SB (1997) An iterative technique for the detection of land-cover transitions in multitemporal remote-sensing images. *IEEE Trans Geosci Remote Sens* 35(4):858–867
145. Demir B, Bovolo F, Bruzzone L (2012) Detection of land-cover transitions in multitemporal remote sensing images with active-learning-based compound classification. *IEEE Trans Geosci Remote Sens* 50(5):1930–1941
146. Zhong J, Wang R (2006) Multi-temporal remote sensing change detection based on independent component analysis. *Int J Remote Sens* 27(10):2055–2061
147. Patil V, Sale D, Joshi MA (2013) Image fusion methods and quality assessment parameters. *Asian J Eng Appl Technol* 2(1):40–46
148. Kosesoy I, Cetin M, Tepecik A (2015 Jul) A toolbox for teaching image fusion in matlab. *Procedia-Soc Behav Sci* 25(197):525–530
149. Paramanandham N, Rajendiran K (2018) Multi sensor image fusion for surveillance applications using hybrid image fusion algorithm. *Multimedia Tools Appl* 77(10):12405–12436
150. Jin X, Jiang Q, Yao S, Zhou D, Nie R, Hai J, He K (2017 Sep) A survey of infrared and visual image fusion methods. *Infrared Phys Technol* 1(85):478–501
151. Dogra A, Goyal B, Agrawal S (2017) From multi-scale decomposition to non-multi-scale decomposition methods: a comprehensive survey of image fusion techniques and its applications. *IEEE Access* 5:16040–16067
152. Saleem A, Beghdadi A, Boashash B (2012 Dec 1) Image fusion-based contrast enhancement. *EURASIP J Image Video Process* 2012(1):10
153. Liu Y, Chen X, Peng H, Wang Z (2017) Multi-focus image fusion with a deep convolutional neural network. *Inf Fusion* 36:191–207
154. Du C, Gao S (2017) Image segmentation-based multi-focus image fusion through multiscale convolutional neural network. *IEEE Access* 5:15750–15761
155. Liu Y, Chen X, Cheng J, Peng H (2017) A medical image fusion method based on convolutional neural networks. In: 2017 Proceedings of 20th International conference on information fusion, p 1–7, IEEE
156. Masi G, Cozzolino D, Verdoliva L, Scarpa G (2016) Pansharpening by convolutional neural networks. *Remote Sens* 8(594):1–22
157. Liu Y, Chen X, Ward R, Wang Z (2016) Image fusion with convolutional sparse representation. *IEEE Signal Process Lett* 23(12):1882–1886
158. Huang W, Xiao L, Wei Z, Liu H, Tang S (2015) A new pansharpening method with deep neural networks. *IEEE Geosci Remote Sens Lett* 12(5):1037–1041
159. Corbat L, Nauval M, Henriet J, Lapayre JC (2020) A fusion method based on deep learning and case-based reasoning which improves the resulting medical image segmentations. *Expert Syst Appl* 147:113200
160. Wu X, Hui H, Niu M, Li L, Wang L, He B, Yang X, Li L, Li H, Tian J, Zha Y (2020) Deep learning-based multi-view fusion model for screening 2019 novel coronavirus pneumonia: a multicentre study. *Eur J Radiol*. <https://doi.org/10.1016/j.ejrad.2020.109041>
161. Kaur H, Koundal D, Kadyan V (2019) Multi modal image fusion: comparative analysis. In: 2019 International conference on communication and signal processing (ICCSP), p 0758–0761. IEEE

Publisher's Note Springer Nature remains neutral with regard to jurisdictional claims in published maps and institutional affiliations.