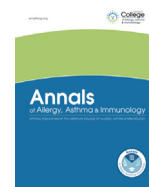




Since January 2020 Elsevier has created a COVID-19 resource centre with free information in English and Mandarin on the novel coronavirus COVID-19. The COVID-19 resource centre is hosted on Elsevier Connect, the company's public news and information website.

Elsevier hereby grants permission to make all its COVID-19-related research that is available on the COVID-19 resource centre - including this research content - immediately available in PubMed Central and other publicly funded repositories, such as the WHO COVID database with rights for unrestricted research re-use and analyses in any form or by any means with acknowledgement of the original source. These permissions are granted for free by Elsevier for as long as the COVID-19 resource centre remains active.



CME Review

Zoonotic coronavirus epidemics

Severe acute respiratory syndrome, Middle East respiratory syndrome, and coronavirus disease 2019



Monica Fung, MD, MPH^{*}; Iris Otani, MD[†]; Michele Pham, MD[†];
Jennifer Babik, MD, PhD^{*}

^{*} Division of Infectious Diseases, Department of Medicine, University of California San Francisco, San Francisco, California

[†] Division of Pulmonary, Critical Care, Allergy and Sleep Medicine, Department of Medicine, University of California San Francisco, San Francisco, California

Key Messages

- Severe acute respiratory syndrome, Middle East respiratory syndrome, and coronavirus disease 2019 (COVID-19) are zoonotic epidemics caused by members of the Coronaviridae family of enveloped, single-stranded, RNA viruses.
- The diagnosis of severe acute respiratory syndrome, Middle East respiratory syndrome, and COVID-19 relies on nucleic acid amplification tests, which are highly specific, but their sensitivity depends on many clinical factors, including the timing from symptom onset and sample type relative to disease.
- COVID-19 has broad clinical manifestations and can affect almost every organ system in the body.
- Although asthma and atopy do not seem to predispose patients to COVID-19 infection, their effects on COVID-19 clinical outcomes remain uncertain. It is recommended that effective therapies, including inhaled corticosteroids and biologic therapy, be continued to maintain disease control.
- There are no reports of COVID-19 among patients with primary innate and T-cell deficiencies. The presentation of COVID-19 among patients with primary antibody deficiencies is variable, with some experiencing mild clinical courses and others experiencing fatal infection despite multimodal therapy.
- The landscape of treatment for COVID-19 is rapidly evolving. The main classes of therapy include antivirals and immunomodulators, and there are drugs from each category demonstrating efficacy in the management of COVID-19.

ARTICLE INFO

Article history:

Received for publication September 21, 2020.

Received in revised form November 16, 2020.

Accepted for publication November 24, 2020.

ABSTRACT

Objective: To review the virology, immunology, epidemiology, clinical manifestations, and treatment of the following 3 major zoonotic coronavirus epidemics: severe acute respiratory syndrome (SARS), Middle East respiratory syndrome (MERS), and coronavirus disease 2019 (COVID-19).

Data Sources: Published literature obtained through PubMed database searches and reports from national and international public health agencies.

Study Selections: Studies relevant to the basic science, epidemiology, clinical characteristics, and treatment of SARS, MERS, and COVID-19, with a focus on patients with asthma, allergy, and primary immunodeficiency.

Results: Although SARS and MERS each caused less than a thousand deaths, COVID-19 has caused a worldwide pandemic with nearly 1 million deaths. Diagnosing COVID-19 relies on nucleic acid amplification tests, and infection has broad clinical manifestations that can affect almost every organ system. Asthma and atopy do not seem to predispose patients to COVID-19 infection, but their effects on COVID-19 clinical outcomes remain mixed and inconclusive. It is recommended that effective therapies, including inhaled

Reprints: Monica Fung, MD, MPH, Division of Infectious Diseases, Department of Medicine, University of California San Francisco, 513 Parnassus Ave, S-380, San Francisco, CA 94143; E-mail: monica.fung@ucsf.edu.

Disclosures: The authors have no conflicts of interest to report.

Funding: The authors have no funding sources to report.

<https://doi.org/10.1016/j.anai.2020.11.021>

1081-1206/© 2021 Published by Elsevier Inc. on behalf of American College of Allergy, Asthma & Immunology.

corticosteroids and biologic therapy, be continued to maintain disease control. There are no reports of COVID-19 among patients with primary innate and T-cell deficiencies. The presentation of COVID-19 among patients with primary antibody deficiencies is variable, with some experiencing mild clinical courses, whereas others experiencing a fatal disease. The landscape of treatment for COVID-19 is rapidly evolving, with both antivirals and immunomodulators demonstrating efficacy.

Conclusion: Further data are needed to better understand the role of asthma, allergy, and primary immunodeficiency on COVID-19 infection and outcomes.

© 2021 Published by Elsevier Inc. on behalf of American College of Allergy, Asthma & Immunology.

Instructions

Credit can now be obtained, free for a limited time, by reading the review article and completing all activity components. Please note the instructions listed below:

- Review the target audience, learning objectives and all disclosures.
- Complete the pre-test.
- Read the article and reflect on all content as to how it may be applicable to your practice.
- Complete the post-test/evaluation and claim credit earned. At this time, physicians will have earned up to 1.0 *AMA PRA Category 1 Credit™*. Minimum passing score on the post-test is 70%.

Overall Purpose

Participants will be able to demonstrate increased knowledge of the clinical treatment of allergy/asthma/immunology and how new information can be applied to their own practices.

Learning Objectives

At the conclusion of this activity, participants should be able to:

- Recognize the salient virologic, epidemiologic, and clinical features of the three major zoonotic coronavirus epidemics this century.
- Describe the clinical manifestations and outcomes of COVID-19, in particular in patients with asthma, allergy, and primary immunodeficiency.

Release Date: April 1, 2021

Expiration Date: March 31, 2023

Target Audience

Physicians involved in providing patient care in the field of allergy/asthma/immunology

Accreditation

The American College of Allergy, Asthma & Immunology (ACAAI) is accredited by the Accreditation Council for Continuing Medical Education (ACCME) to provide continuing medical education for physicians.

Designation

The American College of Allergy, Asthma & Immunology (ACAAI) designates this journal-based CME activity for a maximum of 1.0 *AMA PRA Category 1 Credit™*. Physicians should claim only the credit commensurate with the extent of their participation in the activity.

Disclosure Policy

As required by the Accreditation Council for Continuing Medical Education (ACCME) and in accordance with the American College of Allergy, Asthma and Immunology (ACAAI) policy, all CME planners, presenters, moderators, authors, reviewers, and other individuals in a position to control and/or influence the content of an activity must disclose all relevant financial relationships with any commercial interest that have occurred within the past 12 months. All identified conflicts of interest must be resolved, and the educational content thoroughly vetted for fair balance, scientific objectivity, and appropriateness of patient care recommendations. It is required that disclosure be provided to the learners prior to the start of the activity. Individuals with no relevant financial relationships must also inform the learners that no relevant financial relationships exist. Learners must also be informed when off-label, experimental/investigational uses of drugs or devices are discussed in an educational activity or included in related materials. Disclosure in no way implies that the information presented is biased or of lesser quality. It is incumbent upon course participants to be aware of these factors in interpreting the program contents and evaluating recommendations. Moreover, expressed views do not necessarily reflect the opinions of ACAAI.

Disclosure of Relevant Financial Relationships

All identified conflicts of interest have been resolved. Any unapproved/investigative uses of therapeutic agents/devices discussed are appropriately noted.

Planning Committee

- Larry Borish, MD, Consultant, Consulting Fee: Avrio-Purdue; Advisory Board, Consulting Fee: Bristol Myers Squibb, Genzyme, Sanofi; Clinical Research, Contracted Research: Regeneron, Money to Institution; Investigator, Grant, Money to Institution: GlaxoSmithKline
- Mariana C. Castells, MD, PhD, has no relevant financial relationships to disclose
- Anne K. Ellis, MD, MSc, FRCPC, Advisory Board, Honorarium: Alk Abello, AstraZeneca, Aralez, Bausch Health, LEO Pharma, Merck, Novartis, Pfizer; Speaker, Honorarium: Alk Abello, Aralez, AstraZeneca, Medexus, Mylan; Research, Grants: Alk Abello, Aralez, AstraZeneca, Bayer, LLC. Medexus, Novartis, Regeneron; Independent Consultant, Fees: Bayer LLC, Regeneron
- Mitchell Grayson, MD, Advisory Board, Honorarium: DBV Technologies, Advisory Board, Consulting Fee: GlaxoSmithKline

- Matthew Greenhawt, MD, Consultant, Fees: Aquestive; Advisory Board, Honorarium: Allergenics, Allergy Therapeutics, Aquestive, DBV Technologies, Intrommune, Novartis, Nutricia, Pfizer, Protas, Sanofi/Genzyme, US WorldMeds; Speaker, Honorarium: DBV Technologies
- William D. Johnson, PhD, has no relevant financial relationships to disclosure.
- Donald Leung, MD, PhD, Advisory Board, Consulting Fee: Boehringer Ingelheim; Consultant, Honorarium: Genentech; Advisory Board, Honorarium: Leo Pharma; Speaker, Honorarium: Pfizer
- Jay A. Lieberman, MD, Author, Research Investigator, Contracted Research, Money to Institution: Aimmune; Advisory Board/Research Investigator, Honorarium/Contracted Research, Money to Institution: DBV Technologies; Advisory Board, Honorarium: Genentech; Research Investigator, Contracted Research, Money to Institution: Regeneron
- Gailen D. Marshall, Jr, MD, PhD, has no relevant financial relationships to disclose.
- Anna Nowak-Wegrzyn, MD, PhD, Advisory Board, Honorarium: Nestle; Novartis, Regeneron; Speaker, Honorarium: Nutricia; Author, Royalty: UpToDate
- John J. Oppenheimer, MD, Consultant, Consulting Fee: AstraZeneca; Research, Consulting Fee: GlaxoSmithKline; Adjudication/dsmb, Novartis/Abbvie/Regeneron/Sanofi
- Jonathan M. Spergel, MD, PhD, Independent Contractor, Honorarium: Abbott; Consultant, Independent Contractor, Consulting Fee, Contracted Research: DBV Technologies; Advisory Board, Contracted Research, Honorarium. Contracted Research: Novartis; Consultant, Independent Contractor, Consulting Fee: Intellectual Property Rights, Regeneron; Independent Contractor, Contracted Research: Sanofi

Authors

- Monica Fung, MD, MPH, has no relevant financial relationships to disclose.
- Iris Otani, MD, has no relevant financial relationships to disclose.
- Michele Pham, MD, has no relevant financial relationships to disclose.
- Jennifer Babik, MD, PhD, has no relevant financial relationships to disclose.

Recognition of Commercial Support: This activity has not received external commercial support.

Copyright Statement: ©2015–2021 ACAAI. All rights reserved.

CME Inquiries: Contact the American College of Allergy, Asthma & Immunology at education@acaai.org or 847-427-1200.

Introduction

There are 4 common coronaviruses that cause mild upper respiratory illness in humans. Over the past 20 years, there have been 3 major zoonotic coronavirus (CoV) epidemics with 3 other highly pathogenic CoV: (1) severe acute respiratory syndrome (SARS) caused by SARS-CoV, (2) Middle East respiratory syndrome (MERS) caused by MERS-CoV, and now (3) coronavirus disease 2019 (COVID-19) caused by SARS-CoV-2. SARS and MERS each caused fewer than a thousand deaths, but COVID-19 has spread worldwide and, at the time of this review, has infected nearly 50 million patients and caused more than a million deaths.¹ In this article, we will describe each of these syndromes in detail, with a particular focus on patients with asthma, allergy, and primary immunodeficiency.

Severe Acute Respiratory Syndrome (SARS)

Virology and Immune Response

Like other CoV, SARS-CoV is a single-stranded RNA virus in the *Betacoronavirus* genera of the Coronaviridae family.² Bats are the natural reservoir for SARS-CoV, and the palm civet (a cat-like Asian mammal) is a possible intermediate host.^{3–5} The viral life cycle is similar to that of SARS-CoV-2 (Fig 1). Severe disease seems to be mediated by the activation of T_H1 cell response and the release of proinflammatory cytokines.⁶ SARS-CoV evades the human interferon (IFN) response by means of multiple active and passive strategies, such as inhibiting IFN regulatory factor 3, a transcription factor that activates IFN genes.^{7,8}

Epidemiology and Transmission

SARS initially emerged in the People's Republic of China during the fall of 2002, which then spread worldwide to 29 countries, creating large outbreaks in the People's Republic of China, Hong Kong, Republic of China, Singapore, and Toronto, Canada.⁹ There were 19 probable and 8 confirmed cases in the United States.¹⁰ The epidemic ended in July 2003 with a total of 8098 cases and 774

deaths (case fatality rate of 9.6%).⁹ Since then, there have only been a few sporadic cases of SARS reported, mostly associated with laboratory breaches.⁶ The main mode of transmission for SARS-CoV is by means of respiratory droplets and possibly fomites.¹¹ Nosocomial transmission was well documented.⁶

Clinical Manifestations

The incubation period for SARS is approximately 5 days (range 2–14 days).² The most common presenting symptoms are fever (99%–100%), chills (15%–73%), cough (62%–100%), shortness of breath (40%–42%), headache (20%–56%), and myalgia (31%–61%).² Gastrointestinal symptoms (nausea, vomiting, or diarrhea) occur in less than a third of patients.² Asymptomatic infection is uncommon.⁶

Diagnosis

SARS-CoV was detected using polymerase chain reaction (PCR) on respiratory, blood, and stool specimens, often using a combination of specimens given the imperfect sensitivity (80% at best) of a single nasopharyngeal sample.⁶ Serologic testing was used for epidemiologic surveillance.⁶

Treatment and Vaccines

Supportive care was the mainstay of management for SARS. Multiple drugs were tried for treatment, but few randomized controlled trials (RCTs) were done. Ribavirin did not have clinical efficacy and led to hemolysis in many patients.⁵ Retrospective studies revealed possible benefits from lopinavir/ritonavir, IFN, and convalescent plasma.^{2,6,12} Steroids seemed to be harmful, leading to increased mortality and prolonged viremia.^{2,6} There were early vaccine trials in macaques and mice, but no completed human trials.⁶

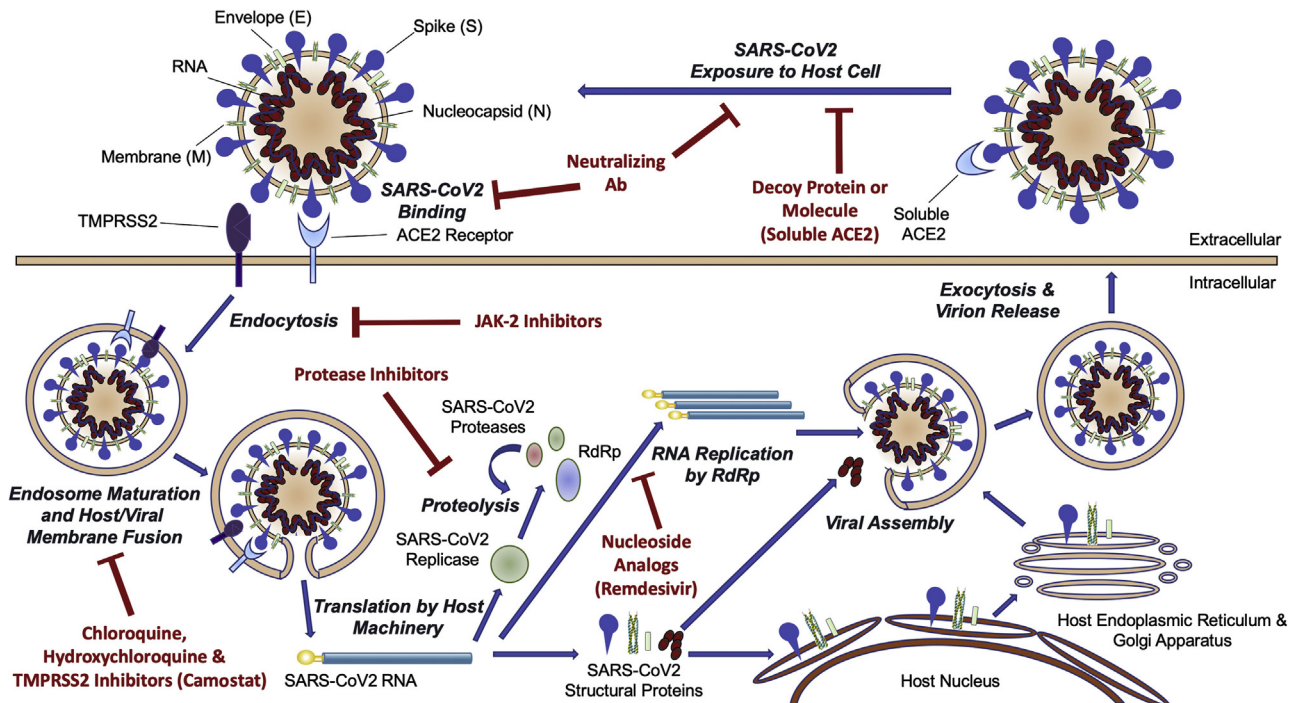


Figure 1. The lifecycle of SARS-CoV-2. ACE2 receptor binding, endocytosis, viral genome translation, and amplification, followed by virion assembly and exocytosis. ACE2, angiotensin-converting enzyme 2; SARS-CoV-2, severe acute respiratory syndrome coronavirus 2; TMPRSS2, transmembrane protease serine 2. (Reproduced with permission from Atri et al,⁴⁸ *JACC Basic Transl Sci*; 2020; 5(5):518-536.)

Middle East respiratory syndrome (MERS)

Virology and Immune Response

MERS-CoV is another *Betacoronavirus* in the same genus SARS-CoV that infects humans and camels.^{13,14} Although bats serve as a MERS-CoV reservoir,^{15,16} the immediate host is the dromedary camel that then infects humans.¹⁷

Although the lifecycle of MERS-CoV is largely similar to that of SARS-CoV and SARS-CoV-2, MERS-CoV differs in host binding receptor dipeptidyl peptidase 4 (also known as CD26), which is found on epithelial and endothelial cells of the human lung, kidney, small intestine, liver, and prostate.¹⁸⁻²⁰ The host immune response to MERS-CoV is characterized by elevated proinflammatory cytokines (eg, interleukin [IL]-6 and CXCL-10)²¹ followed by T_H1 and type 1 cytotoxic T-cell responses during convalescence.

Epidemiology and Transmission

The first MERS case was reported in September 2012 in Saudi Arabia,²² and there have been more than 2400 cases and 800 deaths reported to the World Health Organization (WHO).²³ Cases have occurred predominantly in persons residing in or traveling from the Arabian Peninsula. The median age was 52 years (interquartile range, 37-65 years), and 79% were men.²⁴

Transmission primary occurs by means of close contact between dromedary camels and humans.^{15,17,25} Although human-to-human transmission has been confirmed,^{24,26-28} humans are considered transient or terminal hosts with no sustained human-to-human transmission.²⁹ Reported R_0 estimates vary significantly (0.45-8.1),³⁰ with increased spreading described in nosocomial outbreaks.³¹ Primary modes of transmission are droplet and contact, with potential for aerosol spread in close unprotected contact.³²

Clinical Manifestations

The average incubation period for MERS is 5 to 7 days.^{33,34} The most common clinical presentation is severe pneumonia and acute respiratory distress syndrome in an adult. Among 47 patients with MERS-CoV infection in Saudi Arabia, fever (98%) and cough (83%) were present in most; less common symptoms included myalgia, diarrhea, and sore throat. All patients had abnormal chest imaging, but there were no clear characteristic laboratory findings. Approximately 89% of patients required intensive care and 72% required mechanical ventilation, with a case fatality rate of 60%.²⁷

Diagnosis

Real-time reverse-transcriptase PCR (RT-PCR) testing is the main diagnostic for MERS-CoV. Given the severity of disease and risk for human-to-human transmission, a combined approach to

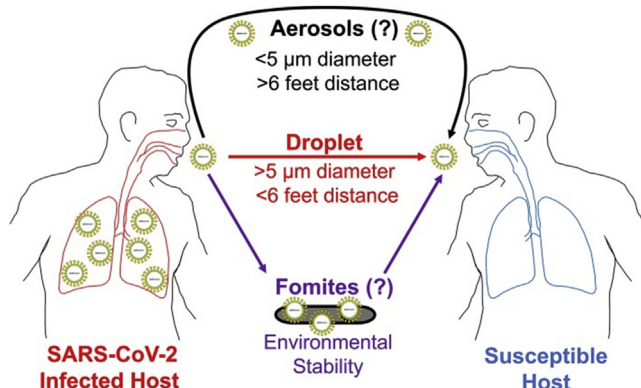


Figure 2. Modes of transmission of SARS-CoV-2. SARS-CoV-2, severe acute respiratory syndrome coronavirus 2.

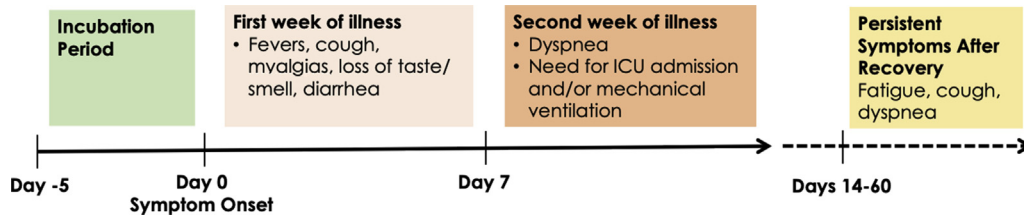


Figure 3. The clinical course of COVID-19. Abbreviations: COVID-19, coronavirus disease 2019; ICU, intensive care unit.

testing is favored with PCR testing of the lower respiratory tract, upper respiratory tract, and serum (in order of preference).^{15,26,35}

Treatment and Vaccines

There are no therapeutic agents with proven clinical efficacy for MERS-CoV, and supportive care is the mainstay of therapy. Retrospective studies of antiviral agents (ribavirin or IFN) and steroids among critically ill patients with MERS have exhibited either statistically nonsignificant trends toward benefit or suggested increased mortality.^{36–38} Although convalescent plasma,³⁹ monoclonal antibodies,^{40,41} and novel antivirals (fusion inhibitor⁴²; nucleotide analog⁴³) exhibited promise in animal studies, these therapies were not studied in humans.

Coronavirus Disease 2019 (COVID-19)

Virology and Immune Response

SARS-CoV-2 is a novel *Betacoronavirus* that is related to but distinct from SARS-CoV and MERS-CoV.⁴⁴ SARS-CoV-2 is closely related to bat and pangolin coronaviruses^{44,45}; it has been theorized that bats are the natural reservoir of the virus and the pangolin, an endangered and frequently trafficked mammal, may have served as an intermediate host.⁴⁵ Although a market in Wuhan, People's Republic of China, was initially thought to be the source of the outbreak, this has not been definitely proven.⁴⁵

The lifecycle of SARS-CoV-2 is believed to be similar to that of SARS-CoV and other coronaviruses (Fig 1). The spike protein on the virion surface binds to the angiotensin-converting enzyme 2 (ACE2) receptor on host cells.⁴⁶ The virus is then internalized by means of endocytosis, which is mediated by spike protein cleavage by the serine protease transmembrane serine protease 2.⁴⁷ The viral genome is then translated into a polyprotein that is cleaved by both host and viral proteases; a viral RNA-dependent RNA polymerase then amplifies the genome, and virions are assembled and released.⁴⁸ It is notable that the ACE2 receptor has broad tissue distribution, including the lungs, upper airway, myocardium, gastrointestinal tract, kidneys, and vascular endothelial cells in

most tissues.^{49,50} This likely, in part, explains the broad clinical manifestations of COVID-19.

SARS-CoV-2 induces a limited type I and type III IFN response but high chemokine and proinflammatory cytokine gene expression. This exuberant inflammatory response is thought to play a role in more severe disease given the association between elevated inflammatory markers and mortality.⁵¹

Epidemiology and Transmission

Since the first reports of COVID-19 cases in Wuhan, the People's Republic of China, in late 2019, the SARS-CoV-2 virus has spread worldwide, infecting nearly 30 million patients and causing close to 1 million deaths.^{1,52}

Older patients and those with comorbidities are at increased risk for severe COVID-19 disease.^{53–55} Data from multiple countries have exhibited incrementally higher rates of hospitalization and mortality with increasing age.^{56–58} In the People's Republic of China, patients with COVID-19 who were in the age range of 70 to 79 years and 80 years or older experienced case fatality rates of 8% and 15%, respectively, compared with the overall case fatality rate of 2.3%.⁵⁹ Other established epidemiologic risk factors for severe COVID-19 include diabetes, hypertension, cardiovascular disease, chronic lung disease, and obesity.^{56–58,60} In a large prospective cohort from the United Kingdom, significantly increased mortality was seen among COVID-19 patients with cardiovascular disease (hazard ratio [HR], 1.16), liver disease (HR, 1.51), obesity (HR, 1.33), and chronic kidney disease (HR, 1.33).⁶⁰ Immunosuppressed patients with malignancy and solid organ transplant recipients seem to be at increased risk of severe COVID-19 disease and death, whereas for those with other types of immunocompromise, current evidence is less clear.⁶¹ Within the United States, there are significant racial disparities in COVID-19 disease and death likely as a result of social conditions and systemic health inequities among racial groups.⁶²

The current understanding of SARS-CoV-2 transmission is incomplete. Person-to-person transmission by means of close-range respiratory droplets is considered the predominant mode of transmission (Fig 2).^{63,64} Although SARS-CoV-2 can be transmitted as an airborne aerosol,^{65–67} this has not been clearly

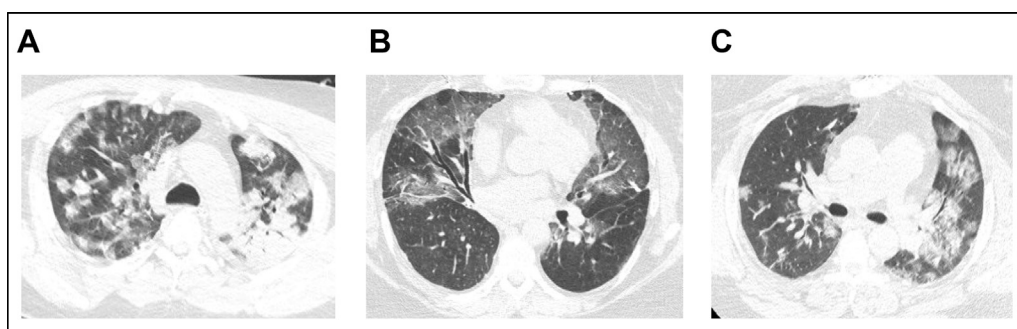


Figure 4. Computed tomography findings from three patients with COVID-19 (A–C). Bilateral ground-glass opacities can be seen, often with a peripheral distribution.

Table 1
Percentage and Number of Patients With Asthma Among Patients With COVID-19 and Reports of Clinical COVID-19 Outcomes Associated With Asthma

Author, year	N	Age, y ^b		Hospitalized	With asthma, % (n)	Study location	Asthma associated with
Adult							
Zhang et al, ²²³ 2020	140	57 (25–87)	median (range)	140	0.0 (0)	Wuhan, People's Republic of China	
Zhang et al, ²²⁴ 2020	290	57 (22–88)	median (range)	290	0.3 (1)	Wuhan, People's Republic of China	
Li et al, ²²⁵ 2020	548	60 (48–69)	median (IQR)	548	0.9 (5)	Wuhan, People's Republic of China	
Song et al, ¹⁵⁹ 2020	961	—	—	961	2.3 (22)	Wuhan, People's Republic of China	
Guan et al, ¹⁷³ 2020	1590	49	median	—	0.0 (0)	People's Republic of China	
Lee et al, ²²⁶ 2020	303	25 (22–36)	median (IQR)	1	0.3 (1)	Cheonan, South Korea	
Yang et al, ¹⁴⁴ 2020	7340	≥20	—	—	9.9 (725)	South Korea	Increased risk for intubation, ICU admission, death
Garcia-Pachon et al, ²²⁷ 2020	376	54 (42–69)	median (IQR)	158	2.7 (10)	Alicante, Spain	
San-Juan et al, ²²⁸ 2020 ^a	32	32 ± 7	mean ± SD	29	12.5 (4)	Madrid, Spain	
Beurnier et al, ¹⁴⁹ 2020	768	54 (42–67)	median (IQR)	768	4.8 (37)	Paris, France	Lower but not significantly different mortality rate
Grandbastien et al, ²²⁹ 2020	106	64 (54–72)	median (IQR)	106	21.7 (23)	Strasbourg, France	No difference in length of admission, oxygen supplementation needs, need for intubation or ICU level of care
Avdeev et al, ²³⁰ 2020	1307	62 (34–83)	median (range)	1307	1.8 (23)	Moscow, Russia	
Almazeedi et al, ²³¹ 2020	1096	41	median	1096	3.9 (43)	State of Kuwait	
Ferguson et al, ²³² 2020	72	60 (43–71)	median (IQR)	72	9.7 (7)	California	
Duanmu et al, ²³³ 2020	100	45 (32–65)	median (IQR)	24	10.0 (10)	California	
Gold et al, ²³⁴ 2020	305	60	median	—	10.5 (32)	Georgia	
Chhibha et al, ¹⁶⁶ 2020	1526	—	—	853	14.4 (220)	Illinois	No difference in risk for hospitalization
Mahdavinia et al, ¹⁵⁰ 2020	935	—	—	—	25.8 (241)	Illinois	Longer intubation time
Corsini Campioli et al, ²³⁵ 2020	251	53	median	62	18.3 (46)	Minnesota	No difference in mortality rate
Lovinsky-Desir et al, ¹⁴⁶ 2020	1298	≤65	—	1298	12.6 (163)	New York	Lower likelihood of achieving cessation of viral RNA shedding 3 weeks after symptom onset
Singer et al, ²³⁶ 2020	1651	50	median	—	6.0 (99)	New York	No difference in length of admission, need for intubation, length of intubation, need for tracheostomy, hospital readmission, mortality
Richardson et al, ⁸⁴ 2020	5700	63	median	—	9.0 (513)	New York	
Lieberman-Cribbin et al, ¹⁵¹ 2020	6250	57	median	—	4.4 (272)	New York	No difference in mortality rate
Andrikopoulou et al, ¹⁵⁵ 2020 ^a	158	—	—	87	11.4 (18)	New York	
Salacup et al, ²³⁷ 2020	242	66 (58–76)	median (IQR)	242	7.4 (18)	Pennsylvania	
Bhatraju et al, ²³⁸ 2020	24	64 (23–97)	mean (range)	24	14.0 (3)	Washington	
Pediatric							
Du et al, ²³⁹ 2020	182	6 (0–15)	median (range)	182	0.5 (1)	Wuhan, People's Republic of China	
Ibrahim et al, ¹⁴⁷ 2020	4	13 ± 5	mean ± SD	0	25 (1)	Melbourne, Australia	
Chao et al, ²⁴⁰ 2020	67	≤21	—	46	23.9 (11) ^c	New York	No difference in need for PICU level of care
Otto et al, ²⁴¹ 2020	424	10 (1–15)	median (IQR)	77	20.5 (87)	Pennsylvania	
DeBiasi et al, ²⁴² 2020	177	10 (0–34)	median (range)	44	19.8 (35)	Washington, District of Columbia	

Abbreviations: B, benralizumab; COVID-19, coronavirus 2019; D, dupilumab; ICU, intensive care unit; IQR, interquartile range; M, mepolizumab; O, omalizumab; PICU, pediatric ICU; R, reslizumab.

^aStudies that reported specifically on pregnant women only.

^bAges were rounded to the nearest whole number in years.

^cThis study reported the number of asthma patients only among hospitalized patients with COVID-19.

Table 2
Reports of How Many Patients on Type 2 Biologics Developed COVID-19, the Outcomes of COVID-19 Infections, and whether Biologics Were Held or Continued During Infection

Author, year	O	B	M	R	D	Indication	Patients with COVID-19	Outcome	Biologic management
Lommatzsch et al, ²⁴³ 2020	1	—	—	—	—	Asthma	1	Home	Continued (home self-administration)
García-Pachón et al, ²²⁷ 2020	1	—	—	—	—	Asthma	1	Asymptomatic	NR
Beurnier et al, ¹⁴⁹ 2020	2	—	—	—	—	Asthma	2	Hospitalized (n = 1) ICU (n = 1)	Continued (inpatient)
Matucci et al, ²⁴⁴ 2020	145	124	200	—	4	Asthma	4	Home, on B (n = 1) Home, on O (n = 1) ICU, on O (n = 2)	Held during active infection (n = 3)
Renner et al, ²⁴⁵ 2020	—	1	—	—	—	Asthma	1	Home	NR
García-Moguel et al, ²⁴⁶ 2020	—	2	—	—	—	Asthma	2	Home (n = 1) Hospitalized (n = 1)	NR
Förster-Ruhrmann et al, ¹⁷⁰ 2020	—	—	—	—	1	CRSwNP	1	Home	Continued
Bhalla et al, ²⁴⁷ 2020	—	—	—	—	1	Asthma	1	Mild	Already discontinued 3 months before getting COVID-19
Carugno et al, ²⁴⁸ 2020	—	—	—	—	30	AD	0	NA	NA
Caroppo et al, ²⁴⁹ 2020	—	—	—	—	1	AD	1	Home	NR
Ordóñez-Rubiano et al, ²⁵⁰ 2020	—	—	—	—	1	AD	1	Asymptomatic	Continued
Criado et al, ²⁵¹ 2020	1	—	—	—	—	urticaria	1	Home	Started with improvement of urticaria
Ferrucci et al, ²⁵² 2020 ^a	—	—	—	—	245	AD	2	Mild (n = 1) Hospitalized (n = 1)	Continued
Napolitano et al, ²⁵³ 2020	—	—	—	—	200	AD	0	NA	NA
Heffler et al, ¹⁶⁴ 2020	708 ^b	796 ^b	—	—	—	Asthma	22 ^c	Recovered, on O (n = 6) Recovered, on M (n = 13) Death, on M (n = 1) Recovered, on B (n = 2)	NR
Zhu et al, ¹⁵² 2020 ^d	—	—	—	—	—	Asthma	16	Home (n = 11) Hospitalized (n = 2) ICU (n = 3)	NR

Abbreviations: AD, atopic dermatitis; B, benralizumab; COVID-19, coronavirus 2019; CRSwNP, chronic rhinosinusitis with nasal polyps; D, dupilumab; ICU, intensive care unit; IL, interleukin; M, mepolizumab; NA, not reported; NR, not applicable; O, omalizumab; R, reslizumab.

^aIn this study, co-infected family members of both patients with COVID-19 died from COVID-19.

^bNumbers were calculated from percentages reported (47.1% of 1504 patients were treated with anti-immunoglobulin E and 52.9% of 1504 patients were treated with anti-IL-5 or anti-IL-5R).

^cAuthors included both confirmed and suspected COVID-19 cases in their report.

^dSpecific biologics prescribed were not reported.

exhibited in the real world, including among health care workers.⁶⁸ Although SARS-CoV-2 has been detected in nonrespiratory specimens (stool, blood, semen, ocular fluid), the likelihood of blood-borne or nonmucous membrane transmission seems to be low.⁶⁹⁻⁷¹

The duration and degree of infectivity of an individual with COVID-19 depend on multiple factors. Asymptomatic or pre-symptomatic transmission plays a large role, with several studies documenting transmission up to 6 days before symptom onset,^{72,73} A persistent positive PCR for SARS-CoV-2 does not necessarily indicate the presence of a live infective virus,⁶³ but viral load as assessed by PCR cycle threshold may.⁷⁴ Risk of infection is also related to the type and duration of exposure, with prolonged close contact in closed or crowded settings conveying the highest risk.⁷⁵

Clinical Manifestations

Approximately 40% to 45% of SARS-CoV-2 infections are asymptomatic.⁷⁶ For the remaining patients with symptomatic infection, approximately 80% are mild (not requiring hospitalization), 15% are moderate to severe (requiring hospitalization), and 5% are critical (requiring intensive care unit [ICU] care).^{59,77-79} COVID-19 can involve almost every system in the body. The median incubation period between infection and symptom onset is 5 days. Patients often do not manifest signs and symptoms of a severe disease until the second week of illness (Fig 3).^{55,80} Of note, 2 recent reports describe that a significant proportion of patients have persistent symptoms weeks to months after recovery from acute infection, even in young patients with no comorbidities.^{81,82}

Systemic and Respiratory Manifestations

The main systemic manifestations of COVID-19 are fever (>75%), myalgias (10%-50%), and fatigue (20%-40%).^{53,55,79,83-85} Cough is

seen in 45% to 80% of patients (usually dry) and dyspnea in 20% to 55%. Headache and symptoms of upper respiratory tract infection (sore throat and rhinorrhea) are seen in less than 20% of patients.

Gastrointestinal Manifestations

Diarrhea or nausea/vomiting is seen in only 5% to 9% of patients.⁸⁶⁻⁸⁸ More importantly, gastrointestinal symptoms can rarely be the only presenting symptoms (ie, without respiratory complaints) of COVID-19.⁸⁹⁻⁹¹

Cardiac Manifestations

Arrhythmias have been described in 7% to 17% of hospitalized patients^{83,92} and cardiac injury (defined by elevation in troponin level) in 7% to 28%.⁹³ Multiple studies have found that there is no association between the use of ACE inhibitors and angiotensin receptor blockers and the risk of SARS-CoV-2 acquisition or the risk for more severe disease.⁹⁴⁻⁹⁷

Head and Neck Manifestations

Disorders of taste (dysgeusia, ageusia) and smell (hyposmia, anosmia) are quite common in COVID-19, ranging anywhere from 34% to 89% of patients.⁹⁸⁻¹⁰⁰ These symptoms can manifest before other respiratory symptoms and can be present without nasal congestion, raising the possibility that disorders of taste and smell may at least be in part a direct effect of the virus rather than solely because of nasal inflammation and obstruction.⁹⁹ Ocular symptoms have been described in 1% to 32% of patients, with conjunctivitis being most common.¹⁰¹⁻¹⁰⁵

Neurologic Manifestations

Neurologic findings have been described in 36% to 57% of hospitalized patients.¹⁰⁶⁻¹⁰⁸ The most common symptoms were dizziness, headache, and impaired consciousness; stroke was seen in

Table 3
Published Reports of Patients With Specific Primary Immunodeficiencies Who Developed SARS-CoV-2 Infections

Author, year	Patient diagnoses (N)	Geographic location	Study design	Number with COVID-19	Symptoms	Clinical severity (%)	COVID-19 treatment (%)	Outcomes (%)		
Meyts et al, ¹⁷⁴ 2020	PID/IEI ^{a,b}	International Argentina, Chile, Brazil, France, Italy, Mexico, Spain, The Netherlands, United Kingdom, United States	Retrospective study	Total 94	Asymptomatic, fever, dyspnea, cough, upper respiratory symptoms, GI symptoms, myalgias	Home (36), Asymptomatic (11), Hospitalized (63), ICU (19)	Antibiotics (51), IVIG (11), hydroxychloroquine/chloroquine (33), corticosteroids (21), mAbs (tocilizumab, anakinra) (9), antivirals (lopinavir and ritonavir) (13), remdesivir (10), favipravir (1), anticoagulants (13), convalescent plasma (5)	Recovered (90) Died (10)		
	Antibody deficiency			53					Home (N = 19), Hospitalized (N = 34), ICU (N = 10)	Recovered (87) Died (13)
	CID			14					Home (N = 6), Hospitalized (N = 8), ICU (N = 3)	Recovered (90)
	Immune dysregulation			9					Home (N = 1), Hospitalized (N = 9)	Recovered (89) Died (11)
	Autoinflammation			7					Home (N = 5), hospitalized (N = 2), ICU (N = 1)	Recovered (100)
	Phagocyte defects			6					Home (N = 3), Hospitalized (N = 3), ICU (N = 1)	Recovered (83) Died (17)
	Innate immunity defect			3					Home (N = 1), Hospitalized (N = 2)	Recovered (100)
	Bone marrow failure			2					Hospitalized (N = 2)	Recovered (100)
Quinti et al, ¹⁸² 2020	XLA (1), ARA (1), CVID (5)	Italy	Case series	7	Asymptomatic, fever, dyspnea, cough	Home (14), Hospitalized (86), ICU (43)	Antibiotics (71), Antivirals (100), hydroxychloroquine (100), IVIG (100), tocilizumab (43)	Recovered (86), died (14—1 CVID patient)		
Soresina et al, ¹⁸⁷ 2020	XLA (2) ^c	Italy	Case series	2	Fever, dyspnea, cough	Hospitalized (100)	Antibiotics (100), hydroxychloroquine (100), IVIG 100, lopinavir/ritonavir (50)	Recovered (100)		
Jin et al, ¹⁸⁶ 2020	XLA (3) ^c	United States (NY)	Case series	3	Fever, dyspnea, cough	Hospitalized (100)	Antibiotics (100), anticoagulants (67), convalescent plasma (100), IVIG (100), remdesivir (33)	Recovered		
Fil et al, ¹⁸¹ 2020 and Aljaberi et al, ¹⁸⁸ 2020 ^c	CVID (1)	United States (OH)	Case report	1	Fever, dyspnea, cough, nausea/ vomiting, diarrhea	ICU	Antibiotics, home hydroxychloroquine increased from 200 mg twice daily to thrice daily, IVIG	Recovered		
Mullur et al, ¹⁸³ 2020	CVID (1)	United States (MA)	Case report	1	Fever, dyspnea, cough	ICU	Antibiotics, Convalescent plasma, IVIG, remdesivir	Died		
Ho et al, ¹⁷⁶ 2020	CVID (9), hypogammaglobulinemia (1), IgA-IgG2 deficiency (1), XLA (3), XHIGM (1), interferon gamma receptor 2 deficiency ^{c,d}	United States (NY)	Case series	16	Fever, cough, dyspnea, diarrhea, emesis, stomatitis	Home (25), Hospitalized (75), ICU (31)	Antibiotics, hydroxychloroquine, corticosteroids, investigational agent, convalescent plasma	Recovered (75) Died (25)		
Abraham et al, ²⁵⁴ 2020	NFKB2 loss of function (1) ^c	United States (OH)	Case report	1	Fever, cough, dyspnea, UR symptoms, anosmia	ICU	Remdesivir, tocilizumab, IVIG, convalescent plasma	Recovered		
Dinkelbach et al, ¹⁸⁴ 2020	FNIP1 deficiency (1)	Germany	Case report	1	Fever, dyspnea, cough	ICU	Antibiotics, prednisolone, remdesivir	Recovered		
van der Made et al, ¹⁷⁷ 2020	TLR7 deficiency (4)	Netherlands	Case series	4	Fever, dyspnea, cough, vomiting	ICU (100)	Antibiotics (100), chloroquine (50), corticosteroids (25), anticoagulation (25)	Recovered (75) Died (25)		

Abbreviations: ARA, autosomal recessive agammaglobulinemia; CID, combined immunodeficiency; CVID, common variable immune deficiency; FNIP1, folliculin interacting protein 1; GI, gastrointestinal; ICU, intensive care unit; IEI, idiopathic environmental intolerance; IVIG, intravenous immunoglobulin; mAbs, monoclonal antibodies; NFKB2, nuclear factor kappa B subunit 2; PID, primary immunodeficiencies; SARS-CoV-2, severe acute respiratory syndrome coronavirus 2; XLA, X-linked agammaglobulinemia.

^aIncludes some previously reported cases.

^bIncludes pediatric cases.

^cOne patient in this report by Soresina et al.¹⁸⁷ was also included in the case series by Quinti et al.¹⁸²

^dIncludes the same XLA cases as in Jin et al.¹⁸⁶

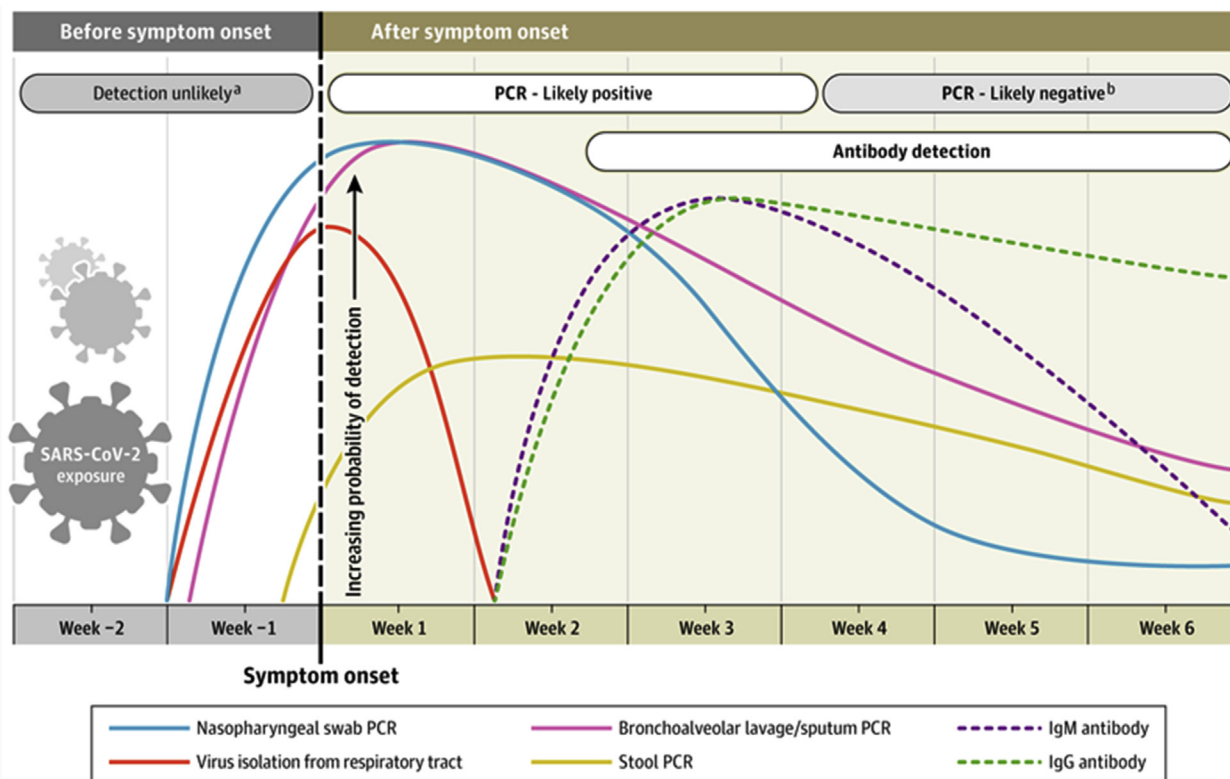


Figure 5. Time course of viral exposure, clinical infection, and the results of clinical assays for SARS-CoV-2 and the immune response to it. From N Sethuraman et al., *JAMA* 2020;323:2249.

only 2% to 3% of patients. It is unclear whether neurologic effects are related to a direct effect of the virus, hypercoagulability or inflammation caused by the virus, or are simply the result of severe medical illness in patients with preexisting vascular risk factors.^{106,109} Several reports have also described Guillain-Barré syndrome in patients with COVID-19.¹¹⁰⁻¹¹²

Hematologic Manifestations

The incidence of venous thromboembolism (deep vein thrombosis and/or pulmonary embolism) in patients hospitalized with COVID-19 ranges from approximately 15% to 50%, and the risk seems to be higher in patients with elevated D-dimer levels.¹¹³⁻¹¹⁹ The role of therapeutic anticoagulation in severe COVID-19 is controversial¹²⁰—the risks and benefits remain unclear and prospective trials are needed.

Renal Manifestations

Acute kidney injury is seen in 3% to 11% of hospitalized patients, requiring renal replacement therapy in 2% to 7%.^{121,122} It is not clear whether kidney injury is because of direct viral effects (there are high levels of ACE2 expression in the kidney) or whether this is a byproduct of inflammation or hemodynamic shifts.^{121,122}

Dermatologic Manifestations

Rash has been reported from less than 1% to 20% of patients, depending on the study.^{53,123-125} The most common morphologies reported are erythematous, urticarial, and vesicular rashes. Chilblain-like lesions (known colloquially as "COVID toes") have been described typically in patients during the COVID-19 pandemic.^{126,127} However, more recent data argue against a causal link; rather, these lesions may be owing to lifestyle changes (eg, spending more time barefoot) during shelter in place.^{128,129}

Inflammatory Syndromes

The increased levels of inflammatory markers in patients with severe COVID-19 (discussed in the subsequent sections) have raised the possibility that some manifestations of critical illness in COVID-19 may be caused by a cytokine storm. However, recent data suggest that the levels of inflammatory cytokines are similar in critically ill patients with and without COVID-19.^{130,131} Nevertheless, the inflammatory response in COVID-19 underlies the rationale for trying to treat COVID-19 with anti-inflammatory medications (eg, immunosuppressives and steroids). Another multisystem inflammatory syndrome has recently been described in children, which has similarities to Kawasaki disease but is thought to be a distinct entity.^{132,133}

Laboratory Findings

Multiple studies have tried to identify factors that could predict disease severity, disease progression, and/or death. Factors that have been identified to date include older age, presence of comorbidities, low oxygen saturation, levels of inflammatory markers (eg, lactic acid dehydrogenase), and chest computed tomography (CT) severity.¹³⁴⁻¹³⁷ However, when and how to use these data from a clinical or triage standpoint is not yet clear.

Imaging

Chest radiographic findings are abnormal in 60% and chest CT scans in 86% of patients hospitalized with COVID-19.⁵³ The most common chest CT findings are ground-glass opacities (83%-87%) that are usually bilateral (78%-80%) and in a peripheral distribution (75%-77%).^{138,139} Consolidations, septal thickening, and crazy paving are also common. Typical CT findings are illustrated in [Figure 4](#).

Clinical Manifestations Among Patients with Allergy and Atopy

Although data are limited, initial studies suggest that asthma and allergies do not particularly predispose patients to coronavirus infections. Asthma exacerbations did not seem to increase during the previous SARS-CoV-2 and MERS-CoV outbreaks.^{140,141} During the current SARS-CoV-2 pandemic, asthma has been reported in 0% to 23.9% of patients with COVID-19 (Table 1). Studies have found asthma prevalence in patients with COVID-19 to be lower than the asthma prevalence reported in respective regions.^{142,143} Similarly, rates of asthma, allergic rhinitis, and atopic dermatitis were all lower in patients with COVID-19 (9.9%, 57.4%, and 1.9%, respectively) compared with the total tested population (14.9%, 63.1%, 3.9%, respectively) in a nationwide Korean cohort study.¹⁴⁴ When 37 major pediatric asthma and allergy centers estimated to treat 1000 patients with asthma in Europe and Turkey were surveyed between September 2019 and July 2020, none reported any symptomatic COVID-19 cases or positive SARS-CoV-2 tests among their patients.¹⁴⁵

Of note, 3 studies suggest that perhaps asthma rates may be concentrated in pediatric patients with COVID-19. However, data are limited, studies were done in different countries, and definitive conclusions cannot be reached. A higher asthma prevalence was observed among pediatric patients aged 21 years and below (32.6%, 13/55) than in the whole cohort of patients with COVID-19 aged 65 years and below in New York (12.6%, 163/1298).¹⁴⁶ In pediatric patients from Australia, asthma prevalence was higher among patients with COVID-19 (25% [1/4]) than in the whole cohort (10.9%, 47/433),¹⁴⁷ whereas, in adult patients from South Korea, asthma prevalence was lower among patients with COVID-19 (9.9%, 725/7340) than in the whole cohort (14.9%, 32,845/219,959).¹⁴⁴

Data regarding the effect of asthma on COVID-19 outcomes illustrated in Table 1 are mixed and conflicting. Severe asthma was associated with increased risk of COVID-19-related death in 1 study reviewing a health analytics platform with records of 40% of patients from the United Kingdom,¹⁴⁸ but asthma was not necessarily associated with increased mortality in other studies.^{146,149–151} Interestingly, in at least 2 studies in which asthma was associated with worse clinical outcomes, nonallergic asthma accounted for the increased risk for worse outcomes (severe COVID-19, ICU admission, intubation, and death).^{144,152}

The effect of asthma on COVID-19 outcomes may differ on the basis of other patient characteristics, although, again, data are limited. One study found male sex, Asian race, and comorbid chronic obstructive pulmonary disease (COPD) to be risk factors for hospitalization among patients with asthma.¹⁵³ Another study from UK Biobank found that asthma was a risk factor for COVID-19 hospitalization among women but not men.¹⁵⁴ Among pregnant women, those with moderate to severe COVID-19 were more likely to have asthma than those with mild COVID-19.¹⁵⁵

It has been hypothesized that reduced ACE2 expression could be protective against COVID-19 infection,¹⁵⁶ although data remain limited and conflicting. Asthma, allergic rhinitis, and increasing severity of allergic sensitization have been associated with reductions in ACE2 expression in airway epithelial cells.^{157,158} Asthma has been associated with lower ACE2 expression and a lower risk of developing severe COVID-19 compared with COPD.¹⁵⁹ IL-13, a cytokine implicated in the pathogenesis of multiple atopic conditions, including asthma,¹⁶⁰ were found to reduce ACE2 and increase transmembrane serine protease 2 expression in airway epithelial cells.¹⁵⁷

Conversely, asthma has also been associated with increased ACE2 expression in bronchial biopsy, bronchoalveolar lavage, and blood.¹⁶¹ In addition, a study comparing 330 patients with asthma and 79 healthy control patients and a study comparing 77 patients with asthma and 17 healthy control patients found that ACE2

expression was similar between patients with asthma and non-patients with asthma.^{162,163} Notably, there was higher ACE2 expression among patients with asthma who were men, African American, or had diabetes mellitus, and the authors have suggested that a higher level of monitoring may be needed for these patients.¹⁶² Indeed, African American race and diabetes mellitus were implicated as risk factors for hospitalization in patients with asthma with COVID-19¹⁵³ and non-insulin-dependent diabetes mellitus was observed with a significantly higher prevalence in patients with asthma with COVID-19.¹⁶⁴

There has also been speculation as to whether inhaled corticosteroids (ICS) could be protective against or provide treatment benefit for COVID-19 infection. Currently, there is no literature clearly indicating whether ICS use is beneficial or detrimental to COVID-19 outcomes.¹⁶⁵ In one study of 1562 patients, ICS use did not seem to affect the risk for hospitalization among patients with asthma in Chicago.¹⁶⁶ There has been a case series of inhaled ciclesonide initiation temporally correlating to improvement in 3 hospitalized patients with COVID-19.¹⁶⁷ In vitro, a combination of glycopyrronium, formoterol, and budesonide seemed to inhibit viral replication in infected nasal and tracheal epithelial cells¹⁶⁸ and ACE2 expression was found to be decreased in sputum cells of patients with asthma and COPD on ICS.^{162,169}

Questions have also been raised regarding the effect of type 2 biologic therapy on COVID-19 infectivity and outcomes. Observational experiences reported to date do not provide evidence that type 2 biologics are associated with increased risk for COVID-19 infection or higher COVID-19 disease severity. To date, reports specifically investigating COVID-19 infectivity and outcomes in patients on type 2 biologic therapy found that among 1938 patients on anti-immunoglobulin E (IgE) (n = 610), anti-IL-5 or anti-IL5R (n = 844), or anti-IL-14/IL-13 (n = 483), COVID-19 infection was observed in 55 (2.8%), with 6 severe cases and 1 mortality. In addition, a recent case report specifically described milder than expected COVID-19 severity in a patient on dupilumab (Table 2).¹⁷⁰

In a study specifically investigating risk factors for hospitalization, ICU stay, and mortality among patients with asthma and COVID-19, both ICS and biologic use did not differ between patients with COVID-19 having asthma who needed general vs ICU level of care. Short-acting β agonist—only use was associated with a lower risk for hospitalization.¹⁵³

Multiple position statements (Global Initiative for Asthma, American Academy of Allergy, Asthma, and Immunology, American College of Allergy, Asthma and Immunology, British Thoracic Society, and European Academy of Allergy and Clinical Immunology) have been released recommending continued treatments that are effective for patients with atopy, including type 2 biologics, given the current lack of evidence that type 2 biologics increase infectivity or mortality and the risk of losing disease control if type 2 biologics were to be stopped.^{171,172}

Clinical Manifestations Among Patients with Primary Immunodeficiency

Not all primary immunodeficiencies (PID) are thought to be equally susceptible to SARS-CoV-2 infections and its complications, but this is largely based on knowledge of the immune system function in pathogen response given the limited published reports (Table 3). COVID-19 data from the People's Republic of China describe very few patients with immunodeficiencies. Of note, 2 studies of more than a thousand patients with COVID-19 each reported that 0.19% of their study population had an immunodeficiency and milder disease courses, but the specifics of their diagnoses were not elaborated on.^{53,173} Given the lack of robust information regarding COVID-19 in patients with PID, likely owing to the small numbers of such patients, reports from databases and

group studies will particularly helpful to further understanding. The largest report of patients with PID infected with SARS-CoV-2 comes from an international effort among immunologists who described 94 patients with a wide range of PID diagnoses.¹⁷⁴ A total of 59 patients (63%) required hospitalization, and 16% of all patients required intensive care. All adult patients who died from SARS-CoV-2 had preexisting comorbidities.¹⁷⁴

The innate immune system is the first line of defense against pathogens, CoV is recognized by pattern recognition receptors—such as toll-like receptors (TLRs), particularly TLR3, TLR4, and TLR7, and retinoic acid–inducible gene 1 (RIG-1)–like receptors—that induce proinflammatory cytokines that help propagate antiviral responses.¹⁷⁵ There have been few specific reports of COVID-19 in patients with known innate system immune deficiencies. From the larger international study, innate system immune deficiencies were described in 3 young children younger than 2 years of age that ranged from an asymptomatic child with STAT1 gain-of-function to a one-year-old man with interferon gamma receptor 2 deficiency who required ICU admission.^{174,176} In New York, the one-year-old boy with interferon gamma receptor 2 deficiency with COVID-19 and a miliary *Mycobacterium avium* coinfection was treated with steroids in the ICU but recovered.^{174,176} There was also a report of a young child in Italy who became infected with SARS-CoV-2 and developed mild myocarditis and recovered.¹⁷⁴ A case series of 2 pairs of brothers in the Netherlands highlights a potential clinical presentation.¹⁷⁷ All 4 patients were healthy and young, with a mean age of 26 years, who developed severe COVID-19 leading to mechanical ventilation.¹⁷⁷ One patient died. Whole-exome sequencing performed found X-chromosomal loss-of-function mutations in TLR7, and on stimulation with a TLR7 agonist, type I IFN signaling was transcriptionally down-regulated, as was the production of type II IFNs.¹⁷⁷ Significance of these findings is unclear, because patients with TLR7 deficiency have not been reported to have recurrent infections, and TLR signaling has been reported to be complex with redundancies.

T cell responses are thought to be particularly important as defenses against viral infections such as SARS-CoV-2. Many studies suggest that lymphopenia is associated with more severe COVID-19 disease.^{53,178–180} In 1 retrospective study of 1018 patients with COVID-19, all T lymphocyte subsets, especially CD8-positive T cells, were markedly lower in nonsurvivors than in survivors.¹⁷⁸ Patients in the group with elevated IL-6 levels (>20 pg/mL) and lower CD8-positive T cell counts (<165 cells/ μ L) were older, had more comorbidities, increased need for mechanical ventilation, and ICU admission, and increased incidence of death.¹⁷⁸ Though there are no published reports of COVID-19 in patients with PID having isolated primary T cell defects, there have been reports of some patients with combined immunodeficiencies; however, limited numbers do not allow, thus, validated conclusions regarding risk of infection or severity of COVID-19 disease cannot be drawn.¹⁷⁴ These patients labeled as combined immunodeficiencies in the international study all required admission, with half needing ICU care.¹⁷⁴

Predominantly antibody deficiencies represent the most common group of primary immunodeficiency diagnoses, and reports have found a wide range of clinical presentations of COVID-19 in these patients but suggest that the adaptive immune system may not be as critical in the defense against SARS-CoV-2 as other aspects of the immune system.^{174,176,181–186}

Cases of COVID-19 in children with PID are limited. From an international study of patients with PID, 32 of the 94 patients reported were younger than 18 years of age. Of those patients, 9 (28%) required ICU admission, and 2 (6%) died.¹⁷⁴ The diagnoses of these children included STAT1 gain-of-function, GATA2 deficiency, phagocyte defects (eg, chronic granulomatous disease), combined immunodeficiency, common variable immune deficiency (CVID), hypogammaglobulinemia, autoinflammatory syndromes (eg,

Mediterranean fever), and immune dysregulation.¹⁷⁴ One case report describes a moderately severe case of COVID-19 in a 7-year-old child with a rare folliculin interacting protein 1 deficiency that leads to cardiomyopathy, chronic lung disease, and a B-cell deficiency with hypogammaglobulinemia necessitating immunoglobulin replacement.¹⁸⁴ This patient required a high-flow nasal cannula and developed cardiac dysfunction and renal failure but ultimately clinically improved.¹⁸⁴ In a study of the Mexican open registry of patients with COVID-19, immunodeficiencies (3.8%) and asthma (3.8%) were the most frequently found preexisting conditions in the 21,161 patients younger than 18 years of age.¹⁸⁵ The patients labeled with an immunodeficiency included “transient hypogammaglobulinemia, IgG subclass deficiency, impaired polysaccharide responsiveness, and IgA deficiency.”¹⁸⁵ This study concluded that children with immunodeficiencies were associated with mild and moderate forms of COVID-19 disease.¹⁸⁵ These findings may be influenced by biased reporting, given that patients with PID and asthma may have better access to medical care than others.

In the few reports describing COVID-19 in adult patients with CVID, X-linked agammaglobulinemia (XLA), and autosomal-recessive agammaglobulinemia, patients with more severe B cell defects seemed to experience a milder clinical course.^{174,176,181–183,186–188} Out of the patients described in these reports, there were 10 patients who were asymptomatic (1 with autosomal-recessive agammaglobulinemia, 1 with XLA, and 1 with hypogammaglobulinemia).^{174,176,181–183,186–188} In the international study with 94 patients with PID, 26% had mild disease and were treated outpatient, and the most frequently reported PID in that group was predominantly antibody deficiency with 14 patients.¹⁷⁴ There are also reports of patients with XLA who had COVID-19-related pneumonia but not needing mechanical ventilation.^{174,176,186} These cases suggest that B cells are important but not strictly required to overcome infection.

In the literature, there have been approximately a dozen reported fatalities after a SARS-CoV-2 infection described in patients with inborn errors of immunity, predominantly in those with antibody deficiencies.^{174,182,183} In the international collaboration study, 9 patients in that cohort (7 adults and 2 children) died. All adult patients with PID who died because of SARS-CoV-2 infection had preexisting comorbidities, which included cardiomyopathy, chronic kidney disease, malignancies, chronic lung disease.¹⁷⁴ Their PID diagnoses were mostly antibody deficiencies—6 patients with CVID (4), IgG deficiency (1), IgA and IgG2 deficiency (1)—and 1 patient with a syndromic disease.¹⁷⁴ The 2 children with X-CGD also had concomitant Burkholderia sepsis and hemophagocytic lymphohistiocytosis, and another child had XIAP deficiency who had severe gut graft vs host disease after hematopoietic stem-cell transplantation, septic shock, and hemophagocytic lymphohistiocytosis. There have also been 2 case reports of death in other patients with CVID, including 1 patient who was a 59-year-old woman with chronic bronchitis and CVID on immunoglobulin replacement and the other a 42-year-old man with asthma, morbid obesity, and CVID who was off of intravenous immunoglobulin (IVIG) for at least 6 months.^{182,183} The male patient developed COVID-19 pneumonia and acute respiratory distress syndrome.¹⁸³ He was treated with convalescent plasma, remdesivir, and antibiotics for multiple bacterial infections.¹⁸³ He was found to be severely hypogammaglobulinemic—IgG 117 mg/dL, IgA 10 mg/dL, and IgM undetectable—and received multiple doses of IVIG, but his SARS-CoV-2 nasopharyngeal PCR swabs remained positive throughout his month-long hospitalization before he died.¹⁸³ Given this patient's poor clinical course and that most other patients with CVID and COVID-19 have received IVIG (83%, 5 out of the 6 patients with CVID in the other case series) recovered, maintaining patients on immunoglobulin replacement could be important during these infections potentially to prevent bacterial

suprainfections.^{181-183,187,188} Immunoglobulin replacement has been speculated to potentially be beneficial given its immunomodulatory effects and also potential to provide antibodies that may be cross-reactive with COVID-19, but there are limited data.¹⁸⁹ There are many other factors present as well that may increase mortality, including age and comorbidities.

These reports are small and additional studies, and RCTs are needed to evaluate the susceptibility to, clinical course, and optimal treatment of SARS-CoV-2 infections in patients with PID. There are current efforts between allergists and immunologists internationally to gather further data through surveys and databases, and there have been joint society statements, which state that there is no current data pointing to whether there is generally an increased risk of severe COVID-19 in PID.^{174,190,191} There may be certain types of PID that are at higher risk of contracting an infection and developing a more severe course, though, and clinician contribution to these studies and the publication of data will be helpful in informing clinical care for patients with PID having COVID-19 because, at this time, there are no formal recommendations for specific therapies in this population.

Diagnosis

The 2 major categories of SARS-CoV-2 diagnostics are assays detecting viral nucleic acid and serologic response. Interpretation of results depends on the time test is performed.¹⁹²

SARS-CoV-2 Nucleic Acid Testing

Viral nucleic acid detection is the mainstay of testing for active infection. There are multiple assays using RT-PCR technology that amplify and detect regions of the SARS-CoV-2 genome. Although high in specificity and analytical sensitivity SARS-CoV-2, real-life performance depends on the clinical scenario. False-negative results may arise owing to improper sampling or sampling site. For example, a patient with COVID-19 lower respiratory tract infection may be negative by PCR testing of the upper respiratory tract.^{193,194} For this reason, among symptomatic patients who are either hospitalized or in high-risk settings such as congregate living, 1 or more negative nucleic acid amplification testing (NAATs) may not be able to rule out COVID-19.

SARS-CoV-2 Serology Testing

Serologic tests detect antibodies to SARS-CoV-2 in the blood, with multiple assays developed against different viral epitopes with varying degrees of diagnostic performance. Both IgG and IgM rise approximately 10 to 14 days into the illness.¹⁹⁵ Current US Centers for Disease Control and Prevention and WHO guidelines recommend against using antibody tests to diagnose individuals with active SARS-CoV-2 infection.¹⁹⁶ There are also limited data on whether certain antibodies confer immunity and on the duration of protection of neutralizing antibodies. At this time, serologic testing serves as a public health surveillance tool or as an adjunct to PCR testing for diagnosing active infection.

SARS-CoV-2 Antigen Testing

Tests that identify SARS-CoV-2 antigen can be performed rapidly and serve as a rapid point-of-care assay. However, these assays are typically less sensitive than NAATs, with sensitivity ranging from 0% to 94% with an average of 56%.¹⁹⁷ Antigen tests perform best early in the course of infection when viral load is highest and is currently recommended by the WHO when NAAT is unavailable and within the first 5 to 7 days of infection.

SARS-CoV-2 Culture

SARS-CoV-2 viral culture is currently only performed for research purposes.

Treatment and Vaccines

The landscape for therapeutics against COVID-19 has changed dramatically since the beginning of the pandemic. Although supportive care remains a cornerstone of therapy, there are now also targeted therapies with data from RCTs to support their use. Here we summarize treatment options for COVID-19.

Antivirals

Remdesivir is a nucleoside analog that inhibits the viral RNA-dependent RNA polymerase. Of note, 2 RCTs revealed a clinical benefit in improving recovery in hospitalized patients with COVID-19.^{198,199} The US Food and Drug Administration (FDA) had granted remdesivir emergency use authorization (EUA), and it has become standard of care in the United States for the treatment of COVID-19 in hospitalized patients.²⁰⁰ Currently, remdesivir should only be used in hospitalized patients. Although the exact oxygen saturation cutoff for remdesivir use is controversial, it has only been studied in patients with evidence of lower tract respiratory disease from COVID-19.

Although initial uncontrolled trials found a possible benefit for hydroxychloroquine²⁰¹ multiple RCTs now report no clinical benefit for the treatment of or prophylaxis against SARS-CoV-2 infection, and most also exhibit an increased risk of adverse effects.²⁰²⁻²⁰⁵ The FDA has revoked its EUA for hydroxychloroquine²⁰⁶ and the Infectious Diseases Society of America (IDSA) COVID-19 Guidelines recommend against using hydroxychloroquine.²⁰⁷

Protease inhibitors used for human immunodeficiency viruses, in particular lopinavir/ritonavir, were postulated to act against the proteases of SARS-CoV-2 and were used previously to treat SARS and MERS.¹² However, randomized control trials have found no benefit of either lopinavir/ritonavir²⁰⁸ or darunavir/cobicistat.²⁰⁹ Corticosteroids should not be used in patients who do not require oxygen.

Immunomodulators

The Randomized Evaluation of COVID-19 Therapy trial, an RCT of more than 6000 hospitalized patients in the United Kingdom, reported a significant mortality benefit for the use of dexamethasone vs placebo, in particular, those who were mechanically ventilated or on supplemental oxygen; there was no mortality benefit (and a trend toward harm) among patients who did not require oxygen.²¹⁰ Although there are some caveats to the study, the IDSA guidelines now recommend dexamethasone for hospitalized patients requiring oxygen.²⁰⁷

Convalescent plasma is believed to have both antiviral (by means of neutralizing antibodies) and immunomodulatory effects (by means of neutralization of cytokines/complement and other effects).²¹¹ Observational data suggest a possible benefit of convalescent plasma^{212,213} and minimal risk of harm,²¹⁴ although RCT data are limited.²¹⁵ More trials are underway, and the IDSA guidelines currently recommend using convalescent plasma only in the context of a clinical trial.²¹⁷ However, the FDA has issued EUA for convalescent plasma despite the current lack of robust RCT data.²¹⁶

Tocilizumab is an antibody against the IL-6 receptor that has been used in hopes of dampening the inflammatory response in severe cases of COVID-19. However, a meta-analysis of 7 retrospective studies²¹⁷ and preliminary data from an RCT²¹⁸ both reported no clinical benefit. IDSA guidelines recommend using tocilizumab only in the context of a clinical trial.²⁰⁷

Other immunomodulators are currently under investigation, including other cytokine and Janus kinase inhibitors. IFN beta is also being studied and has exhibited some promise as part of combination therapy in small RCTs.^{219,220}

There are multiple vaccines in development currently using various platforms, including some which use novel messenger RNA (mRNA) technology.^{221,222} The mRNA vaccines rely on the premise

that the mRNA that codes for a viral antigen can be delivered into human cells, which then leads to the production of antigen within the cell and a robust immunogenic response against it.²²¹

Conclusion

A review of the virology, clinical manifestations, and treatment of SARS, MERS, and COVID-19 has elucidated the similarities and differences among these infections. Additional data are needed to better understand the impact of COVID-19 on patients with asthma, allergy, and PID.

References

- Dong E, Du H, Gardner L. An interactive web-based dashboard to track COVID-19 in real time. *Lancet Infect Dis*. 2020;20(5):533–534.
- Zumla A, Chan JFW, Azhar EI, Hui DSC, Yuen K-Y. Coronaviruses—drug discovery and therapeutic options. *Nat Rev Drug Discov*. 2016;15(5):327–347.
- Song Z, Xu Y, Bao L, et al. From SARS to MERS, thrusting coronaviruses into the spotlight. *Viruses*. 2019;11(1):59.
- Fan Y, Zhao K, Shi Z-L, Zhou P. Bat coronaviruses in China. *Viruses*. 2019;11(3):210.
- Wang L-F, Shi Z, Zhang S, Field H, Daszak P, Eaton BT. Review of bats and SARS. *Emerg Infect Dis*. 2006;12(12):1834–1840.
- Hui DSC, Zumla A. Severe acute respiratory syndrome: historical, epidemiologic, and clinical features. *Infect Dis Clin North Am*. 2019;33(4):869–889.
- Kindler E, Thiel V, Weber F. Interaction of SARS and MERS coronaviruses with the antiviral interferon response. *Adv Virus Res*. 2016;96:219–243.
- Fung TS, Liu DX. Human coronavirus: host-pathogen interaction. *Annu Rev Microbiol*. 2019;73:529–557.
- World Health Organization. WHO summary of SARS cases. Available at: <https://www.who.int/csr/sars/country/table>. Accessed November 15, 2020.
- Centers for Disease Control and Prevention. SARS US case report. Available at: <https://www.cdc.gov/media/presskits/sars/cases.htm>. Accessed November 15, 2020.
- Peiris JSM, Yuen KY, Osterhaus ADME, Stöhr K. The severe acute respiratory syndrome. *N Engl J Med*. 2003;349(25):2431–2441.
- Yao T-T, Qian J-D, Zhu W-Y, Wang Y, Wang G-Q. A systematic review of lopinavir therapy for SARS coronavirus and MERS coronavirus—a possible reference for coronavirus disease-19 treatment option. *J Med Virol*. 2020;92(6):556–563.
- Zaki AM, van Boheemen S, Bestebroer TM, Osterhaus ADME, Fouchier RAM. Isolation of a novel coronavirus from a man with pneumonia in Saudi Arabia. *N Engl J Med*. 2012;367(19):1814–1820.
- Cotten M, Lam TT, Watson SJ, et al. Full-genome deep sequencing and phylogenetic analysis of novel human Betacoronavirus. *Emerg Infect Dis*. 2013;19(5):736–42B.
- Memish ZA, Mishra N, Olival KJ, et al. Middle East respiratory syndrome coronavirus in bats, Saudi Arabia. *Emerg Infect Dis*. 2013;19(11):1819–1823.
- Annan A, Baldwin HJ, Corman VM, et al. Human Betacoronavirus 2c EMC/2012-related viruses in bats, Ghana and Europe. *Emerg Infect Dis*. 2013;19(3):456–459.
- Azhar EI, El-Kafrawy SA, Farraj SA, et al. Evidence for camel-to-human transmission of MERS coronavirus. *N Engl J Med*. 2014;370(26):2499–2505.
- Raj VS, Mou H, Smits SL, et al. Dipeptidyl peptidase 4 is a functional receptor for the emerging human coronavirus-EMC. *Nature*. 2013;495(7440):251–254.
- Lu G, Hu Y, Wang Q, et al. Molecular basis of binding between novel human coronavirus MERS-CoV and its receptor CD26. *Nature*. 2013;500(7461):227–231.
- Chan JFW, Lau SKP, To KKW, Cheng VCC, Woo PCY, Yuen K-Y. Middle East respiratory syndrome coronavirus: another zoonotic Betacoronavirus causing SARS-like disease. *Clin Microbiol Rev*. 2015;28(2):465–522.
- Shin H-S, Kim Y, Kim G, et al. Immune responses to Middle East respiratory syndrome coronavirus during the acute and convalescent phases of human infection. *Clin Infect Dis*. 2019;68(6):984–992.
- ProMed Mail. Novel coronavirus—Saudi Arabia: human isolate. Available at: <http://www.promedmail.org/direct.php?id=20120920.1302733>. Accessed November 15, 2020.
- World Health Organization. Middle East respiratory syndrome coronavirus (MERS-CoV). Available at: <https://www.who.int/emergencies/mers-cov/en/>. Accessed November 15, 2020.
- World Health Organization. MERS global summary and assessment of risk. Available at: <https://apps.who.int/iris/bitstream/handle/10665/326126/WHO-MERS-RA-19-1-eng.pdf?ua=1>. Accessed November 15, 2020.
- Haagmans BL, Al Dhahiry SHS, Reusken CBEM, et al. Middle East respiratory syndrome coronavirus in dromedary camels: an outbreak investigation. *Lancet Infect Dis*. 2014;14(2):140–145.
- Drosten C, Muth D, Corman VM, et al. An observational, laboratory-based study of outbreaks of middle East respiratory syndrome coronavirus in Jeddah and Riyadh, Kingdom of Saudi Arabia, 2014. *Clin Infect Dis*. 2015;60(3):369–377.
- Assiri A, McGeer A, Perl TM, et al. Hospital outbreak of Middle East respiratory syndrome coronavirus. *N Engl J Med*. 2013;369(5):407–416.
- Hunter JC, Nguyen D, Aden B, et al. Transmission of Middle East respiratory syndrome coronavirus infections in health care settings, Abu Dhabi. *Emerg Infect Dis*. 2016;22(4):647–656.
- Killerby ME, Biggs HM, Midgley CM, Gerber SI, Watson JT. Middle East respiratory syndrome coronavirus transmission. *Emerg Infect Dis*. 2020;26(2):191–198.
- Park J-E, Jung S, Kim A, Park J-E. MERS transmission and risk factors: a systematic review. *BMC Public Health*. 2018;18(1):574.
- Kim SW, Park JW, Jung H-D, et al. Risk factors for transmission of Middle East respiratory syndrome coronavirus infection during the 2015 outbreak in South Korea. *Clin Infect Dis*. 2017;64(5):551–557.
- Alraddadi BM, Al-Salmi HS, Jacobs-Slifka K, et al. Risk factors for Middle East respiratory syndrome coronavirus infection among health care personnel. *Emerg Infect Dis*. 2016;22(11):1915–1920.
- Virlogeux V, Fang VJ, Park M, Wu JT, Cowling BJ. Comparison of incubation period distribution of human infections with MERS-CoV in South Korea and Saudi Arabia. *Sci Rep*. 2016;6:35839.
- Centers for Disease Control and Prevention (CDC). Update: severe respiratory illness associated with Middle East Respiratory Syndrome coronavirus (MERS-CoV)—worldwide, 2012–2013. *MMWR Morb Mortal Wkly Rep*. 2013;62(23):480–483.
- Centers for Disease Control and Prevention (CDC). Interim guidelines for collecting, handling, and testing clinical specimens from persons under investigation (PUIs) for Middle East respiratory syndrome coronavirus (MERS-CoV)—version 2.1. Available at: <https://www.cdc.gov/coronavirus/mers/guidelines-clinical-specimens.html>. Accessed November 15, 2020.
- Omrani AS, Saad MM, Baig K, et al. Ribavirin and interferon alfa-2a for severe Middle East respiratory syndrome coronavirus infection: a retrospective cohort study. *Lancet Infect Dis*. 2014;14(11):1090–1095.
- Arabi YM, Shalhoub S, Mandourah Y, et al. Ribavirin and interferon therapy for critically ill patients with Middle East respiratory syndrome: a multicenter observational study. *Clin Infect Dis*. 2020;70(9):1837–1844.
- Arabi YM, Mandourah Y, Al-Hameed F, et al. Corticosteroid therapy for critically ill patients with Middle East respiratory syndrome. *Am J Respir Crit Care Med*. 2018;197(6):757–767.
- van Doremalen N, Falzarano D, Ying T, et al. Efficacy of antibody-based therapies against Middle East respiratory syndrome coronavirus (MERS-CoV) in common marmosets. *Antiviral Res*. 2017;143:30–37.
- Houser KV, Gretebeck L, Ying T, et al. Prophylaxis with a Middle East respiratory syndrome coronavirus (MERS-CoV)-specific human monoclonal antibody protects rabbits from MERS-CoV infection. *J Infect Dis*. 2016;213(10):1557–1561.
- Corti D, Zhao J, Pedotti M, et al. Prophylactic and postexposure efficacy of a potent human monoclonal antibody against MERS coronavirus. *Proc Natl Acad Sci U S A*. 2015;112(33):10473–10478.
- Lu L, Liu Q, Zhu Y, et al. Structure-based discovery of Middle East respiratory syndrome coronavirus fusion inhibitor. *Nat Commun*. 2014;5:3067.
- Sheahan TP, Sims AC, Graham RL, et al. Broad-spectrum antiviral GS-5734 inhibits both epidemic and zoonotic coronaviruses. *Sci Transl Med*. 2017;9(396).
- Lu R, Zhao X, Li J, et al. Genomic characterisation and epidemiology of 2019 novel coronavirus: implications for virus origins and receptor binding. *Lancet*. 2020;395(10224):565–574.
- Lau SKP, Luk HKH, Wong ACP, et al. Possible bat origin of severe acute respiratory syndrome coronavirus 2. *Emerg Infect Dis*. 2020;26(7):1542–1547.
- Zhou P, Yang XL, Wang XG, et al. A pneumonia outbreak associated with a new coronavirus of probable bat origin. *Nature*. 2020;588(7836):E6.
- Hoffmann M, Kleine-Weber H, Schroeder S, et al. SARS-CoV-2 cell entry depends on ACE2 and TMPRSS2 and is blocked by a clinically proven protease inhibitor. *Cell*. 2020;181(2):271–280.e8.
- Atri D, Siddiqi HK, Lang JP, Nauffal V, Morrow DA, Bohula EA. COVID-19 for the cardiologist: basic virology, epidemiology, cardiac manifestations, and potential therapeutic strategies. *JACC Basic Transl Sci*. 2020;5(5):518–536.
- Hamming I, Timens W, Bulthuis MLC, Lely AT, Navis GJ, van Goor H. Tissue distribution of ACE2 protein, the functional receptor for SARS coronavirus. A first step in understanding SARS pathogenesis. *J Pathol*. 2004;203(2):631–637.
- Xu H, Zhong L, Deng J, et al. High expression of ACE2 receptor of 2019-nCoV on the epithelial cells of oral mucosa. *Int J Oral Sci*. 2020;12(1):8.
- Blanco-Melo D, Nilsson-Payant BE, Liu W-C, et al. Imbalanced host response to SARS-CoV-2 drives development of COVID-19. *Cell*. 2020;181(5):1036–1045.e9.
- World Health Organization. WHO statement regarding cluster of pneumonia cases in Wuhan, China. Available at: <https://www.who.int/china/news/detail/09-01-2020-who-statement-regarding-cluster-of-pneumonia-cases-in-wuhan-china>. Accessed August 4, 2020.
- Guan W-J, Ni Z-Y, Hu Y, et al. Clinical characteristics of coronavirus disease 2019 in China. *N Engl J Med*. 2020;382:1708–1720.
- Huang C, Wang Y, Li X, et al. Clinical features of patients infected with 2019 novel coronavirus in Wuhan, China. *Lancet*. 2020;395(10223):497–506.
- Zhou F, Yu T, Du R, et al. Clinical course and risk factors for mortality of adult inpatients with COVID-19 in Wuhan, China: a retrospective cohort study. *Lancet*. 2020;395(10229):1054–1062.

56. Verity R, Okell LC, Dorigatti I, et al. Estimates of the severity of coronavirus disease 2019: a model-based analysis. *Lancet Infect Dis.* 2020;20(6):669–677.
57. Onder G, Rezza G, Brusaferro S. Case-fatality rate and characteristics of patients dying in relation to COVID-19 in Italy. *JAMA.* 2020;323(18):1775–1776.
58. Centers for Disease Control and Prevention. COVID-19 hospitalization and death by age. Available at: <https://www.cdc.gov/coronavirus/2019-ncov/covid-data/investigations-discovery/hospitalization-death-by-age.html>. Accessed November 15, 2020.
59. Wu Z, McGoogan JM. Characteristics of and important lessons from the coronavirus disease 2019 (COVID-19) outbreak in China: summary of a report of 72 314 cases from the Chinese Center for Disease Control and Prevention. *JAMA.* 2020;323(13):1239–1242.
60. Docherty AB, Harrison EM, Green CA, et al. Features of 20 133 UK patients in hospital with covid-19 using the ISARIC WHO Clinical Characterisation Protocol: prospective observational cohort study. *BMJ.* 2020;369:m1985.
61. Fung M, Babik JM. COVID-19 in immunocompromised hosts: what we know so far [e-pub ahead of print]. *Clin Infect Dis.* <https://doi.org/10.1093/cid/ciaa863>, accessed November 15, 2020.
62. Millett GA, Jones AT, Benkeser D, et al. Assessing differential impacts of COVID-19 on black communities. *Ann Epidemiol.* 2020;47:37–44.
63. Wölfel R, Corman VM, Guggemos W, et al. Virological assessment of hospitalized patients with COVID-2019. *Nature.* 2020;581(7809):465–469.
64. Zou L, Ruan F, Huang M, et al. SARS-CoV-2 viral load in upper respiratory specimens of infected patients. *N Engl J Med.* 2020;382(12):1177–1179.
65. van Doremalen N, Bushmaker T, Morris DH, et al. Aerosol and surface stability of HCoV-19 (SARS-CoV-2) compared to SARS-CoV-1 [e-pub ahead of print]. *N Engl J Med.* <https://doi.org/10.1056/NEJMc2004973>, accessed November 15, 2020.
66. Stadnytskyi V, Bax CE, Bax A, Anfinrud P. The airborne lifetime of small speech droplets and their potential importance in SARS-CoV-2 transmission. *Proc Natl Acad Sci U S A.* 2020;117(22):11875–11877.
67. Bourouiba L. Turbulent gas clouds and respiratory pathogen emissions: potential implications for reducing transmission of COVID-19. *JAMA.* 2020;323(18):1837–1838.
68. Wong SCY, Kwong RT-S, Wu TC, et al. Risk of nosocomial transmission of coronavirus disease 2019: an experience in a general ward setting in Hong Kong. *J Hosp Infect.* 2020;105(2):119–127.
69. Chen L, Lou J, Bai Y, Wang M. COVID-19 disease with positive fecal and negative pharyngeal and sputum viral tests. *Am J Gastroenterol.* 2020;115(5):790.
70. Zheng S, Fan J, Yu F, et al. Viral load dynamics and disease severity in patients infected with SARS-CoV-2 in Zhejiang Province, China, January–March 2020: retrospective cohort study. *BMJ.* 2020;369:m1443.
71. Wang W, Xu Y, Gao R, et al. Detection of SARS-CoV-2 in different types of clinical specimens. *JAMA.* 2020;323(18):1843–1844.
72. He X, Lau EHY, Wu P, et al. Temporal dynamics in viral shedding and transmissibility of COVID-19. *Nat Med.* 2020;26(5):672–675.
73. Cheng H-Y, Jian S-W, Liu D-P, et al. Contact tracing assessment of COVID-19 transmission dynamics in Taiwan and risk at different exposure periods before and after symptom onset. *JAMA Intern Med.* 2020;180(9):1156–1163.
74. Singanayagam A, Patel M, Charlett A, et al. Duration of infectiousness and correlation with RT-PCR cycle threshold values in cases of COVID-19, England, January to May 2020. *EURO Surveill.* 2020;25(32):2001483.
75. Pollán M, Pérez-Gómez B, Pastor-Barriuso R, et al. Prevalence of SARS-CoV-2 in Spain (ENE-COVID): a nationwide, population-based seroepidemiological study. *Lancet.* 2020;396(10250):535–544.
76. Oran DP, Topol EJ. Prevalence of asymptomatic SARS-CoV-2 infection: a narrative review. *Ann Intern Med.* 2020;173(5):362–367.
77. Livingston E, Bucher K. Coronavirus disease 2019 (COVID-19) in Italy. *JAMA.* 2020;323(14):1335.
78. Stokes EK, Zambrano LD, Anderson KN, et al. Coronavirus disease 2019 case surveillance—United States. *MMWR Morb Mortal Wkly Rep.* 2020;69(24):759–765. January 22.
79. Garg S, Kim L, Whitaker M, et al. Hospitalization rates and characteristics of patients hospitalized with laboratory-confirmed coronavirus disease 2019—COVID-NET, 14 states, March 1–30, 2020. *MMWR Morb Mortal Wkly Rep.* 2020;69(15):458–464.
80. Berlin DA, Gulick RM, Martinez FJ. Severe Covid-19 [e-pub ahead of print]. *N Engl J Med.* <https://doi.org/10.1056/NEJMc2009575>, accessed November 15, 2020.
81. Tenforde MW, Kim SS, Lindsell CJ, et al. Symptom duration and risk factors for delayed return to usual health among outpatients with COVID-19 in a Multistate Health Care Systems Network—United States, March–June 2020. *MMWR Morb Mortal Wkly Rep.* 2020;69(30):993–998.
82. Carfi A, Bernabei R, Landi F, Gemelli Against COVID-19 Post-Acute Care Study Group. Gemelli against COVID-19 post-acute Care Study Group. Persistent symptoms in patients after acute COVID-19. *JAMA.* 2020;324(6):603–605.
83. Goyal P, Choi JJ, Pinheiro LC, et al. Clinical characteristics of COVID-19 in New York City. *N Engl J Med.* 2020;382(24):2372–2374.
84. Richardson S, Hirsch JS, Narasimhan M, et al. Presenting characteristics, comorbidities, and outcomes among 5700 patients hospitalized with COVID-19 in the New York City area. *JAMA.* 2020;323(20):2052–2059.
85. Myers LC, Parodi SM, Escobar GJ, Liu VX. Characteristics of hospitalized adults with COVID-19 in an integrated health care system in California. *JAMA.* 2020;323(21):2195–2198.
86. Sultan S, Altayar O, Siddique SM, et al. AGA institute rapid review of the gastrointestinal and liver manifestations of COVID-19, meta-analysis of international data, and recommendations for the consultative management of patients with COVID-19. *Gastroenterology.* 2020;159(1):320–334.e27.
87. Mao R, Qiu Y, He J-S, et al. Manifestations and prognosis of gastrointestinal and liver involvement in patients with COVID-19: a systematic review and meta-analysis. *Lancet Gastroenterol Hepatol.* 2020;5(7):667–678.
88. Parasa S, Desai M, Thogulva Chandrasekar V, et al. Prevalence of gastrointestinal symptoms and fecal viral shedding in patients with coronavirus disease 2019: a systematic review and meta-analysis. *JAMA Netw Open.* 2020;3(6):e2011335.
89. Lin L, Jiang X, Zhang Z, et al. Gastrointestinal symptoms of 95 cases with SARS-CoV-2 infection. *Gut.* 2020;69(6):997–1001.
90. Luo S, Zhang X, Xu H. Don't overlook digestive symptoms in patients with 2019 novel coronavirus disease (COVID-19). *Clin Gastroenterol Hepatol.* 2020;18(7):1636–1637.
91. Pan L, Mu M, Yang P, et al. Clinical characteristics of COVID-19 patients with digestive symptoms in Hubei, China: a descriptive, cross-sectional, multicenter study. *Am J Gastroenterol.* 2020;115(5):766–773.
92. Wang D, Hu B, Hu C, et al. Clinical characteristics of 138 hospitalized patients with 2019 novel coronavirus-infected pneumonia in Wuhan, China. *JAMA.* 2020;323(11):1061–1069.
93. Guo L, Ren L, Yang S, et al. Profiling early humoral response to diagnose novel coronavirus disease (COVID-19). *Clin Infect Dis.* 2020;71(15):778–785.
94. Reynolds HR, Adhikari S, Pulgarin C, et al. Renin-angiotensin-aldosterone system inhibitors and risk of COVID-19. *N Engl J Med.* 2020;382(25):2441–2448.
95. Mehta N, Kalra A, Nowacki AS, et al. Association of use of angiotensin-converting enzyme inhibitors and angiotensin II receptor blockers with testing positive for coronavirus disease 2019 (COVID-19). *JAMA Cardiol.* 2020;5(9):1020–1026.
96. de Abajo FJ, Rodríguez-Martín S, Lerma V, et al. Use of renin-angiotensin-aldosterone system inhibitors and risk of COVID-19 requiring admission to hospital: a case-population study. *Lancet.* 2020;395(10238):1705–1714.
97. Fosbøl EL, Butt JH, Østergaard L, et al. Association of angiotensin-converting enzyme inhibitor or angiotensin receptor blocker use with COVID-19 diagnosis and mortality. *JAMA.* 2020;324(2):168–177.
98. Giacomelli A, Pezzati L, Conti F, et al. Self-reported olfactory and taste disorders in patients with severe acute respiratory coronavirus 2 infection: a cross-sectional study. *Clin Infect Dis.* 2020;71(15):889–890.
99. Lechien JR, Chiesa-Estomba CM, De Siati DR, et al. Olfactory and gustatory dysfunctions as a clinical presentation of mild-to-moderate forms of the coronavirus disease (COVID-19): a multicenter European study. *Eur Arch Otorhinolaryngol.* 2020;277(8):2251–2261.
100. Spinato G, Fabbri C, Polesel J, et al. Alterations in smell or taste in mildly symptomatic outpatients with SARS-CoV-2 infection. *JAMA.* 2020;323(20):2089–2090.
101. Wu P, Duan F, Luo C, et al. Characteristics of ocular findings of patients with coronavirus disease 2019 (COVID-19) in Hubei Province, China. *JAMA Ophthalmol.* 2020;138(5):575–578.
102. Loffredo L, Pacella F, Pacella E, Tiscione G, Oliva A, Violi F. Conjunctivitis and COVID-19: a meta-analysis [e-pub ahead of print]. *J Med Virol.* <https://doi.org/10.1002/jmv.25938>, accessed November 15, 2020.
103. Hong N, Yu W, Xia J, Shen Y, Yap M, Han W. Evaluation of ocular symptoms and tropism of SARS-CoV-2 in patients confirmed with COVID-19 [e-pub ahead of print]. *Acta Ophthalmol.* <https://doi.org/10.1111/aos.14445>, accessed November 15, 2020.
104. Zhou Y, Duan C, Zeng Y, et al. Ocular findings and proportion with conjunctival SARS-CoV-2 in COVID-19 patients. *Ophthalmology.* 2020;127(7):982–983.
105. Chen L, Deng C, Chen X, et al. Ocular manifestations and clinical characteristics of 535 cases of COVID-19 in Wuhan, China: a cross-sectional study. *Acta Ophthalmol.* 2020;98(8):e951–e959.
106. Mao L, Jin H, Wang M, et al. Neurologic manifestations of hospitalized patients with coronavirus disease 2019 in Wuhan, China. *JAMA Neurol.* 2020;77(6):683–690.
107. Helms J, Kremer S, Merdji H, et al. Neurologic features in severe SARS-CoV-2 infection. *N Engl J Med.* 2020;382(23):2268–2270.
108. Romero-Sánchez CM, Díaz-Maroto I, Fernández-Díaz E, et al. Neurologic manifestations in hospitalized patients with COVID-19: the ALBACOV registry. *Neurology.* 2020;95(8):e1060–e1070.
109. Pleasure SJ, Green AJ, Josephson SA. The Spectrum of neurologic disease in the severe acute respiratory syndrome coronavirus 2 pandemic infection: neurologists move to the frontlines. *JAMA Neurol.* 2020;77(6):679–680.
110. Scheidl E, Canseco DD, Hadji-Naumov A, Bereznaï B. Guillain-Barré syndrome during SARS-CoV-2 pandemic: a case report and review of recent literature. *J Peripher Nerv Syst.* 2020;25(2):204–207.
111. Zhao H, Shen D, Zhou H, Liu J, Chen S. Guillain-Barré syndrome associated with SARS-CoV-2 infection: causality or coincidence? *Lancet Neurol.* 2020;19(5):383–384.
112. Virani A, Rabold E, Hanson T, et al. Guillain-Barré syndrome associated with SARS-CoV-2 infection. *IDCases.* 2020;20:e00771.
113. Grillet F, Behr J, Calame P, Aubry S, Delabrousse E. Acute pulmonary embolism associated with COVID-19 pneumonia detected with pulmonary CT angiography. *Radiology.* 2020;296(3):E186–E188.

114. Llitjos J-F, Leclerc M, Chochois C, et al. High incidence of venous thromboembolic events in anticoagulated severe COVID-19 patients. *J Thromb Haemost.* 2020;18(7):1743–1746.
115. Cui S, Chen S, Li X, Liu S, Wang F. Prevalence of venous thromboembolism in patients with severe novel coronavirus pneumonia. *J Thromb Haemost.* 2020;18(6):1421–1424.
116. Léonard-Lorant I, Delabranche X, Séverac F, et al. Acute pulmonary embolism in patients with COVID-19 at CT angiography and relationship to d-dimer levels. *Radiology.* 2020;296(3):E189–E191.
117. Maldonado E, Tao D, Mackey K. Antithrombotic therapies in COVID-19 disease: a systematic review. *J Gen Intern Med.* 2020;35(9):2698–2706.
118. Artifoni M, Danic G, Gautier G, et al. Systematic assessment of venous thromboembolism in COVID-19 patients receiving thromboprophylaxis: incidence and role of D-dimer as predictive factors. *J Thromb Thrombolysis.* 2020;50(1):211–216.
119. Zhang L, Feng X, Zhang D, et al. Deep vein thrombosis in hospitalized patients with COVID-19 in Wuhan, China: prevalence, risk factors, and outcome. *Circulation.* 2020;142(2):114–128.
120. Paranjpe I, Fuster V, Lala A, et al. Association of treatment dose anticoagulation with in-hospital survival among hospitalized patients with COVID-19. *J Am Coll Cardiol.* 2020;76(1):122–124.
121. Kuntsor SK, Laukkanen JA. Renal complications in COVID-19: a systematic review and meta-analysis. *Ann Med.* 2020;52(7):345–353.
122. Ng JJ, Luo Y, Phua K, Choong AMTL. Acute kidney injury in hospitalized patients with coronavirus disease 2019 (COVID-19): a meta-analysis. *J Infectol.* 2020;81(4):647–679.
123. Recalcati S. Cutaneous manifestations in COVID-19: a first perspective. *J Eur Acad Dermatol Venereol.* 2020;34(5):e212–e213.
124. Marzano AV, Cassano N, Genovese G, Moltrasio C, Vena GA. Cutaneous manifestations in patients with COVID-19: a preliminary review of an emerging issue. *Br J Dermatol.* 2020;183(3):431–442.
125. De Giorgi V, Recalcati S, Jia Z, et al. Cutaneous manifestations related to coronavirus disease 2019 (COVID-19): a prospective study from China and Italy. *J Am Acad Dermatol.* 2020;83(2):674–675.
126. Piccolo V, Neri I, Filippeschi C, et al. Chilblain-like lesions during COVID-19 epidemic: a preliminary study on 63 patients. *J Eur Acad Dermatol Venereol.* 2020;34(7):e291–e293.
127. de Masson A, Bouaziz J-D, Sulimovic L, et al. Chilblains is a common cutaneous finding during the COVID-19 pandemic: a retrospective nationwide study from France. *J Am Acad Dermatol.* 2020;83(2):667–670.
128. Roca-Ginés J, Torres-Navarro I, Sánchez-Arráez J, et al. Assessment of acute acral lesions in a case series of children and adolescents during the COVID-19 pandemic. *JAMA Dermatol.* 2020;156(9):992–997.
129. Herman A, Peeters C, Verroken A, et al. Evaluation of chilblains as a manifestation of the COVID-19 pandemic. *JAMA Dermatol.* 2020;156(9):998–1003.
130. Kox M, Waalders NJB, Kooistra EJ, Gerretsen J, Pickkers P. Cytokine levels in critically ill patients with COVID-19 and other conditions. *JAMA.* 2020;324(15):1565–1567.
131. Sinha P, Calfee CS, Cherian S, et al. Prevalence of phenotypes of acute respiratory distress syndrome in critically ill patients with COVID-19: a prospective observational study. *Lancet Respir Med.* 2020;8(12):1209–1218.
132. Cheung EW, Zachariah P, Gorelik M, et al. Multisystem inflammatory syndrome related to COVID-19 in previously healthy children and adolescents in New York City. *JAMA.* 2020;324(3):294–296.
133. Whittaker E, Bamford A, Kenny J, et al. Clinical characteristics of 58 children with a pediatric inflammatory multisystem syndrome temporally associated with SARS-CoV-2. *JAMA.* 2020;324(3):259–269.
134. Feng Z, Yu Q, Yao S, et al. Early prediction of disease progression in COVID-19 pneumonia patients with chest CT and clinical characteristics. *Nat Commun.* 2020;11(1):4968.
135. Halalau A, Imam Z, Karabon P, et al. External validation of a clinical risk score to predict hospital admission and in-hospital mortality in COVID-19 patients. *Ann Med.* 2021;53(1):78–86.
136. Yadaw AS, Li Y-C, Bose S, Iyengar R, Bunyavanich S, Pandey G. Clinical features of COVID-19 mortality: development and validation of a clinical prediction model. *Lancet Digit Heal.* 2020;2(10):e516–e525.
137. Ji D, Zhang D, Xu J, et al. Prediction for progression risk in patients with COVID-19 pneumonia: the CALL score. *Clin Infect Dis.* 2020;71(6):1393–1399.
138. Bao C, Liu X, Zhang H, Li Y, Liu J. Coronavirus Disease 2019 (COVID-19) CT findings: a systematic review and meta-analysis. *J Am Coll Radiol.* 2020;17(6):701–709.
139. Salehi S, Abedi A, Balakrishnan S, Gholamrezaezhad A. Coronavirus Disease 2019 (COVID-19): a systematic review of imaging findings in 919 patients. *AJR Am J Roentgenol.* 2020;215(1):87–93.
140. Van Bever HP, Chng SY, Goh DY. Childhood severe acute respiratory syndrome, coronavirus infections and asthma. *Pediatr Allergy Immunol.* 2004;15(3):206–209.
141. Zheng X-Y, Xu Y-J, Guan W-J, Lin L-F. Regional, age and respiratory-secretion-specific prevalence of respiratory viruses associated with asthma exacerbation: a literature review. *Arch Virol.* 2018;163(4):845–853.
142. Matsumoto K, Saito H. Does asthma affect morbidity or severity of COVID-19? *J Allergy Clin Immunol.* 2020;146(1):55–57.
143. Lombardi C, Roca E, Bigni B, Cottini M, Passalacqua G. Clinical course and outcomes of patients with asthma hospitalized for severe acute respiratory syndrome coronavirus 2 pneumonia: a single-center, retrospective study. *Ann Allergy Asthma Immunol.* 2020;125(6):707–709.
144. Yang JM, Koh HY, Moon SY, et al. Allergic disorders and susceptibility to and severity of COVID-19: a nationwide cohort study. *J Allergy Clin Immunol.* 2020;146(4):790–798.
145. Kabesch M. Shielding against SARS-CoV-2 infection is not justified in children with severe asthma [e-pub ahead of print]. *Pediatr Allergy Immunol.* <https://doi.org/10.1111/pai.13327>, accessed November 15, 2020.
146. Lovinsky-Desir S, Deshpande DR, De A, et al. Asthma among hospitalized patients with COVID-19 and related outcomes. *J Allergy Clin Immunol.* 2020;146(5):1027–1034.e4.
147. Ibrahim LF, Tosif S, McNab S, et al. SARS-CoV-2 testing and outcomes in the first 30 days after the first case of COVID-19 at an Australian children's hospital. *Emerg Med Australas.* 2020;32(5):801–808.
148. Williamson EJ, Walker AJ, Bhaskaran K, et al. Factors associated with COVID-19-related death using OpenSAFELY. *Nature.* 2020;584(7821):430–436.
149. Beurnier A, Jutant E-M, Jevnikar M, et al. Characteristics and outcomes of asthmatic patients with COVID-19 pneumonia who require hospitalisation. *Eur Respir J.* 2020;56(5):2001875.
150. Mahdavinia M, Foster KJ, Jauregui E, et al. Asthma prolongs intubation in COVID-19. *J Allergy Clin Immunol Pract.* 2020;8(7):2388–2391.
151. Lieberman-Cribbin W, Rapp J, Alpert N, Tuminello S, Taioli E. The impact of asthma on mortality in patients with COVID-19. *Chest.* 2020;158(6):2290–2291.
152. Zhu Z, Hasegawa K, Ma B, Fujiogi M, Camargo CA, Liang L. Association of asthma and its genetic predisposition with the risk of severe COVID-19. *J Allergy Clin Immunol.* 2020;146(2):327–329.e4.
153. Wang L, Foer D, Bates DW, Boyce JA, Zhou L. Risk factors for hospitalization, intensive care, and mortality among patients with asthma and COVID-19. *J Allergy Clin Immunol.* 2020;146(4):808–812.
154. Atkins JL, Masoli JAH, Delgado J, et al. Preexisting comorbidities predicting COVID-19 and mortality in the UK Biobank community cohort. *J Gerontol A Biol Sci Med Sci.* 2020;75(11):2224–2230.
155. Andrikopoulou M, Madden N, Wen T, et al. Symptoms and critical illness among obstetric patients with coronavirus disease 2019 (COVID-19) infection. *Obstet Gynecol.* 2020;136(2):291–299.
156. Ma X, Wang L, Liu L, Yang C, Gai Z. Is asthma an exclusionary condition for SARS-CoV-2 infection in China? -the relationship between asthma and COVID-19 [e-pub ahead of print]. *J Asthma.* <https://doi.org/10.1080/02770903.2020.1789873>, accessed November 15, 2020.
157. Kimura H, Francisco D, Conway M, et al. Type 2 inflammation modulates ACE2 and TMPRSS2 in airway epithelial cells. *J Allergy Clin Immunol.* 2020;146(1):80–88.e8.
158. Jackson DJ, Busse WW, Bacharier LB, et al. Association of respiratory allergy, asthma, and expression of the SARS-CoV-2 receptor ACE2. *J Allergy Clin Immunol.* 2020;146(1):203–206.e3.
159. Song J, Zeng M, Wang H, et al. Distinct effects of asthma and COPD comorbidity on disease expression and outcome in patients with COVID-19 [e-pub ahead of print]. *Allergy.* <https://doi.org/10.1111/all.14517>, accessed November 15, 2020.
160. Wynn TA. Type 2 cytokines: mechanisms and therapeutic strategies. *Nat Rev Immunol.* 2015;15(5):271–282.
161. Radzikowska U, Ding M, Tan G, et al. Distribution of ACE2, CD147, CD26, and other SARS-CoV-2 associated molecules in tissues and immune cells in health and in asthma, COPD, obesity, hypertension, and COVID-19 risk factors. *Allergy.* 2020;75(11):2829–2845.
162. Peters MC, Sajuthi S, Deford P, et al. COVID-19-related genes in sputum cells in asthma. Relationship to demographic features and corticosteroids. *Am J Respir Crit Care Med.* 2020;202(1):83–90.
163. Bradding P, Richardson M, Hinks TSC, et al. ACE2, TMPRSS2, and furin gene expression in the airways of patients with asthma-implications for COVID-19. *J Allergy Clin Immunol.* 2020;146(1):208–211.
164. Heffler E, Detoraki A, Contoli M, et al. COVID-19 in Severe Asthma Network in Italy (SANI) patients: clinical features, impact of comorbidities and treatments [e-pub ahead of print]. *Allergy.* <https://doi.org/10.1111/all.14532>, accessed November 15, 2020.
165. Halpin DMG, Singh D, Hadfield RM. Inhaled corticosteroids and COVID-19: a systematic review and clinical perspective. *Eur Respir J.* 2020;55(5):2001009.
166. Chhibi KD, Patel GB, Vu THT, et al. Prevalence and characterization of asthma in hospitalized and nonhospitalized patients with COVID-19. *J Allergy Clin Immunol.* 2020;146(2):307–314.e4.
167. Iwabuchi K, Yoshie K, Kurakami Y, Takahashi K, Kato Y, Morishima T. Therapeutic potential of ciclesonide inhalation for COVID-19 pneumonia: report of three cases. *J Infect Chemother.* 2020;26(6):625–632.
168. Yamaya M, Nishimura H, Deng X, et al. Inhibitory effects of glycopyrronium, formoterol, and budesonide on coronavirus HCoV-229E replication and cytokine production by primary cultures of human nasal and tracheal epithelial cells. *Respir Investig.* 2020;58(3):155–168.
169. Finney LJ, Glanville N, Farne H, et al. Inhaled corticosteroids downregulate the SARS-CoV-2 receptor ACE2 in COPD through suppression of type I interferon. *J Allergy Clin Immunol.* 2020.
170. Förster-Ruhrmann U, Szczypek AJ, Bachert C, Olze H. COVID-19 in a patient with severe chronic rhinosinusitis with nasal polyps during therapy with dupilumab [e-pub ahead of print]. *J Allergy Clin Immunol.* <https://doi.org/10.1016/j.jaci.2020.09.034>, accessed November 15, 2020.
171. Vultaggio A, Agache I, Akdis CA, et al. Considerations on biologicals for patients with allergic disease in times of the COVID-19 pandemic: an EAACI Statement. *Allergy.* 2020;75(11):2764–2774.

172. Morais-Almeida M, Aguiar R, Martin B, et al. COVID-19, asthma, and biological therapies: what we need to know. *World Allergy Organ J.* 2020;13(5):100126.
173. Guan WJ, Liang WH, Zhao Y, et al. Comorbidity and its impact on 1590 patients with COVID-19 in China: a nationwide analysis. *Eur Respir J.* 2020;55(5):2000547.
174. Meys I, Bucciol G, Quinti I, et al. Coronavirus disease 2019 in patients with inborn errors of immunity: an international study [e-pub ahead of print]. *J Allergy Clin Immunol.* <https://doi.org/10.1016/j.jaci.2020.09.010>, accessed November 15, 2020.
175. Carter-Timofte ME, Jørgensen SE, Freytag MR, et al. Deciphering the role of host genetics in susceptibility to severe COVID-19. *Front Immunol.* 2020;11:1606.
176. Ho HE, Mathew S, Peluso MJ, Cunningham-Rundles C. Clinical outcomes and features of COVID-19 in patients with primary immunodeficiencies in New York City [e-pub ahead of print]. *J Allergy Clin Immunol Pract.* <https://doi.org/10.1016/j.jaip.2020.09.052>, accessed November 15, 2020.
177. van der Made CI, Simons A, Schuurs-Hoeijmakers J, et al. Presence of genetic variants among young men with severe COVID-19 [e-pub ahead of print]. *JAMA.* <https://doi.org/10.1001/jama.2020.13719>, accessed November 15, 2020.
178. Luo M, Liu J, Jiang W, Yue S, Liu H, Wei S. IL-6 and CD8+ T cell counts combined are an early predictor of in-hospital mortality of patients with COVID-19. *JCI Insight.* 2020;5(13):e139024.
179. Tan L, Wang Q, Zhang D, et al. Lymphopenia predicts disease severity of COVID-19: a descriptive and predictive study. *Signal Transduct Target Ther.* 2020;5(1):33.
180. Zhao Q, Meng M, Kumar R, et al. Lymphopenia is associated with severe coronavirus disease 2019 (COVID-19) infections: a systemic review and meta-analysis. *Int J Infect Dis.* 2020;96:131–135.
181. Fill L, Hadney L, Graven K, Persaud R, Hostoffer R. The clinical observation of a patient with common variable immunodeficiency diagnosed as having coronavirus disease 2019. *Ann Allergy Asthma Immunol.* 2020;125(1):112–114.
182. Quinti I, Lougaris V, Milito C, et al. A possible role for B cells in COVID-19? Lesson from patients with agammaglobulinemia. *J Allergy Clin Immunol.* 2020;146(1):211–213.e4.
183. Mullur J, Wang A, Feldweg A. A fatal case of coronavirus disease 2019 in a patient with common variable immunodeficiency. *Ann Allergy Asthma Immunol.* 2020;126(1):90–92.
184. Dinkelbach L, Franzel J, Berghäuser MA, et al. COVID-19 in a child with pre-existing immunodeficiency, cardiomyopathy, and chronic pulmonary disease. *Klin Padiatr.* 2020;232(5):275–278.
185. Leon-Abarca JA. Obesity and immunodeficiencies are the main pre-existing conditions associated with mild to moderate COVID-19 in children. *Pediatr Obes.* 2020;15(12):e12713.
186. Jin H, Reed JC, Liu STH, et al. Three patients with X-linked agammaglobulinemia hospitalized for COVID-19 improved with convalescent plasma. *J Allergy Clin Immunol Pract.* 2020;8(10):3594–3596.e3.
187. Soresina A, Moratto D, Chiarini M, et al. Two X-linked agammaglobulinemia patients develop pneumonia as COVID-19 manifestation but recover. *Pediatr Allergy Immunol.* 2020;31(5):565–569.
188. Aljaberi R, Wishah K. Positive outcome in a patient with coronavirus disease 2019 and common variable immunodeficiency after intravenous immunoglobulin. *Ann Allergy Asthma Immunol.* 2020;125(3):349–350.
189. Díez J-M, Romero C, Gajardo R. Currently available intravenous immunoglobulin contains antibodies reacting against severe acute respiratory syndrome coronavirus 2 antigens. *Immunotherapy.* 2020;12(8):571–576.
190. International Patient Organisation for Primary Immunodeficiencies, the European Society for Immunodeficiencies, International Nursing Group for Immunodeficiencies, Asia Pacific Society for Immunodeficiencies, the Arab Society of Primary Immunodeficiency, the African Society for Immunodeficiency, Clinical Immunology Society, The Latin American Society for Immunodeficiencies, the South East Asia Primary Immunodeficiency Network. Joint statement on the current epidemics of new coronavirus SARS-CoV-2–COVID-19 from IPOPI, ESID, INGD, APSID, ARAPID, ASID, CIS, LASID, SEAPID. Available at: https://www.ceredih.fr/uploads/COVID19_WORLDWIDE_Joint_Statement_20200311_1200CET_FINAL.pdf. Accessed November 15, 2020.
191. Brough HA, Kalayci O, Sediva A, et al. Managing childhood allergies and immunodeficiencies during respiratory virus epidemics—the 2020 COVID-19 pandemic: a statement from the EAACI-section on pediatrics. *Pediatr Allergy Immunol.* 2020;31(5):442–448.
192. Sethuraman N, Jeremiah SS, Ryo A. Interpreting diagnostic tests for SARS-CoV-2. *JAMA.* 2020;323(22):2249–2251.
193. To KK-W, Tsang OT-Y, Leung W-S, et al. Temporal profiles of viral load in posterior oropharyngeal saliva samples and serum antibody responses during infection by SARS-CoV-2: an observational cohort study. *Lancet Infect Dis.* 2020;20(5):565–574.
194. Li Y, Yao L, Li J, et al. Stability issues of RT-PCR testing of SARS-CoV-2 for hospitalized patients clinically diagnosed with COVID-19. *J Med Virol.* 2020;92(7):903–908.
195. Zhao J, Yuan Q, Wang H, et al. Antibody responses to SARS-CoV-2 in patients of novel coronavirus disease 2019. *Clin Infect Dis.* 2020;71(16):2027–2034.
196. Infectious Diseases Society of America. IDSA COVID-19 antibody testing primer. Available at: <https://www.idsociety.org/news-publications-new/articles/2020/emphasizing-need-for-more-information-idsa-releases-antibody-testing-primer2/>. Accessed November 15, 2020.
197. Dinnes J, Deeks JJ, Adriano A, et al. Rapid, point-of-care antigen and molecular-based tests for diagnosis of SARS-CoV-2 infection. *Cochrane Database Syst Rev.* 2020;8:CD013705.
198. Beigel JH, Tomashek KM, Dodd LE, et al. Remdesivir for the treatment of COVID-19—final report. *N Engl J Med.* 2020;383:1813–1826.
199. Härter G, Spinner CD, Roeder J, et al. COVID-19 in patients living with human immunodeficiency virus: a case series of 33 patients. *Infection.* 2020;48(5):681–686.
200. US Environmental Protection Agency. COVID-19 update: FDA broadens emergency use authorization for Veklury (remdesivir) to include all hospitalized patients for treatment of COVID-19. Available at: <https://www.fda.gov/news-events/press-announcements/covid-19-update-fda-broadens-emergency-use-authorization-veklury-remdesivir-include-all-hospitalized#>. Accessed November 15, 2020.
201. Liu J, Cao R, Xu M, et al. Hydroxychloroquine, a less toxic derivative of chloroquine, is effective in inhibiting SARS-CoV-2 infection in vitro. *Cell Discov.* 2020;6:16.
202. Tang W, Cao Z, Han M, et al. Hydroxychloroquine in patients with mainly mild to moderate coronavirus disease 2019: open label, randomised controlled trial. *BMJ.* 2020;369:m1849.
203. Mitjà O, Corbacho-Monné M, Ubals M, et al. Hydroxychloroquine for early treatment of adults with mild COVID-19: a randomized-controlled trial [e-pub ahead of print]. *Clin Infect Dis.* <https://doi.org/10.1093/cid/ciaa1009>, accessed November 15, 2020.
204. Skipper CP, Pastic KA, Engen NW, et al. Hydroxychloroquine in nonhospitalized adults with early COVID-19: a randomized trial. *Ann Intern Med.* 2020;173(8):623–631.
205. Boulware DR, Pullen MF, Bangdiwala AS, et al. A randomized trial of hydroxychloroquine as postexposure prophylaxis for COVID-19. *N Engl J Med.* 2020;383(6):517–525.
206. US Environmental Protection Agency. Coronavirus (COVID-19) update: FDA revokes emergency use authorization for chloroquine and hydroxychloroquine. Available at: <https://www.fda.gov/news-events/press-announcements/coronavirus-covid-19-update-fda-revokes-emergency-use-authorization-chloroquine-and>. Accessed November 15, 2020.
207. Bhimraj A, Morgan RL, Shumaker AH, et al. Infectious Diseases Society of America guidelines on the treatment and management of patients with COVID-19 [e-pub ahead of print]. *Clin Infect Dis.* <https://doi.org/10.1093/cid/ciaa478>, accessed November 15, 2020.
208. Cao B, Wang Y, Wen D, et al. A trial of lopinavir-ritonavir in adults hospitalized with severe COVID-19. *N Engl J Med.* 2020;382(19):1787–1799.
209. Chen J, Xia L, Liu L, et al. Antiviral activity and safety of Darunavir/cobicistat for the treatment of COVID-19. *Open Forum Infect Dis.* 2020;7(7):ofaa241.
210. RECOVERY Collaborative Group, Horby P, Lim WS, et al. Dexamethasone in hospitalized patients with COVID-19—preliminary report [e-pub ahead of print]. *N Engl J Med.* <https://doi.org/10.1056/NEJMoa2021436>, accessed November 15, 2020.
211. Rojas M, Rodríguez Y, Monsalve DM, et al. Convalescent plasma in COVID-19: possible mechanisms of action. *Autoimmunity Rev.* 2020;19(7):102554.
212. Shen C, Wang Z, Zhao F, et al. Treatment of 5 critically ill patients with COVID-19 with convalescent plasma. *JAMA.* 2020;323(16):1582–1589.
213. Duan K, Liu B, Li C, et al. Effectiveness of convalescent plasma therapy in severe COVID-19 patients. *Proc Natl Acad Sci U S A.* 2020;117(17):9490–9496.
214. Joyner MJ, Bruno KA, Klassen SA, et al. Safety update. *Mayo Clin Proc.* 2020;95(9):1888–1897.
215. Joyner MJ, Senefeld JW, Klassen SA, et al. Effect of convalescent plasma on mortality among hospitalized patients with COVID-19: initial three-month experience [e-pub ahead of print]. *medRxiv.* <https://doi.org/10.1101/2020.08.12.20169359>, accessed November 15, 2020.
216. US Food and Drug Administration. Recommendations for investigational COVID-19 convalescent plasma. Available at: <https://www.fda.gov/vaccines-blood-biologics/investigational-new-drug-ind-or-device-exemption-ide-process-cber/recommendations-investigational-covid-19-convalescent-plasma>. Accessed November 15, 2020.
217. Lan S-H, Lai C-C, Huang H-T, Chang S-P, Lu L-C, Hsueh P-R. Tocilizumab for severe COVID-19: a systematic review and meta-analysis. *Int J Antimicrob Agents.* 2020;56(3):106103.
218. Roche. Roche provides an update on the phase III COVACTA trial of Actemra/RoActemra in hospitalized patients with severe COVID-19 associated pneumonia. Available at: <https://www.roche.com/investors/updates/inv-update-2020-07-29.htm>. Accessed November 15, 2020.
219. Hung IF-N, Lung K-C, Tso EY-K, et al. Triple combination of interferon beta-1b, lopinavir-ritonavir, and ribavirin in the treatment of patients admitted to hospital with COVID-19: an open-label, randomised, phase 2 trial. *Lancet.* 2020;395(10238):1695–1704.
220. Davoudi-Monfared E, Rahmani H, Khalili H, et al. A randomized clinical trial of the efficacy and safety of interferon β -1a in treatment of severe COVID-19. *Antimicrob Agents Chemother.* 2020;64(9):e011061-20.
221. O'Callaghan KP, Blatz AM, Offit PA. Developing a SARS-CoV-2 vaccine at warp speed. *JAMA.* 2020;324(5):437–438.
222. Kaur SP, Gupta V. COVID-19 Vaccine: A comprehensive status report. *Virus Res.* 2020;288:198114.
223. Zhang JJ, Dong X, Cao YY, et al. Clinical characteristics of 140 patients infected with SARS-CoV-2 in Wuhan, China. *Allergy.* 2020;75(7):1730–1741.

224. Zhang JJ, Cao YY, Dong X, et al. Distinct characteristics of COVID-19 patients with initial rRT-PCR-positive and rRT-PCR-negative results for SARS-CoV-2. *Allergy*. 2020;75(7):1809–1812.
225. Li X, Xu S, Yu M, et al. Risk factors for severity and mortality in adult COVID-19 inpatients in Wuhan. *J Allergy Clin Immunol*. 2020;146(1):110–118.
226. Lee S, Kim T, Lee E, et al. Clinical course and molecular viral shedding among asymptomatic and symptomatic patients with SARS-CoV-2 infection in a community treatment center in the Republic of Korea. *JAMA Intern Med*. 2020;180(11):1–6.
227. Garcia-Pachon E, Zamora-Molina L, Soler-Sempere MJ, et al. Asthma prevalence in patients with SARS-CoV-2 infection detected by RT-PCR not requiring hospitalization. *Respir Med*. 2020;171:106084.
228. San-Juan R, Barbero P, Fernández-Ruiz M, et al. Incidence and clinical profiles of COVID-19 pneumonia in pregnant women: a single-centre cohort study from Spain. *EClinicalMedicine*. 2020;23:100407.
229. Grandbastien M, Piotin A, Godet J, et al. SARS-CoV-2 Pneumonia in hospitalized asthmatic patients did not induce severe exacerbation. *J Allergy Clin Immunol Pract*. 2020;8(8):2600–2607.
230. Avdeev S, Moiseev S, Brovko M, et al. Low prevalence of bronchial asthma and chronic obstructive lung disease among intensive care unit patients with COVID-19. *Allergy*. 2020;75(10):2703–2704.
231. Almazeedi S, Al-Youha S, Jamal MH, et al. Characteristics, risk factors and outcomes among the first consecutive 1096 patients diagnosed with COVID-19 in Kuwait. *EClinicalMedicine*. 2020;24:100448.
232. Ferguson J, Rosser JI, Quintero O, et al. Characteristics and outcomes of coronavirus disease patients under nonsurge conditions, Northern California, USA, March–April 2020. *Emerg Infect Dis*. 2020;26(8):1679–1685.
233. Duanmu Y, Brown IP, Gibb WR, et al. Characteristics of emergency department patients with COVID-19 at a single site in Northern California: clinical observations and public health implications. *Acad Emerg Med*. 2020;27(6):505–509.
234. Gold JAW, Wong KK, Szablewski CM, et al. Characteristics and clinical outcomes of adult patients hospitalized with COVID-19—Georgia, March 2020. *MMWR Morb Mortal Wkly Rep*. 2020;69(18):545–550.
235. Corsini Campioli C, Cano Cevallos E, Assi M, Patel R, Binnicker MJ, O'Horo JC. Clinical predictors and timing of cessation of viral RNA shedding in patients with COVID-19. *J Clin Virol*. 2020;130:104577.
236. Singer AJ, Morley EJ, Meyers K, et al. Cohort of four thousand four hundred four persons under investigation for COVID-19 in a New York hospital and predictors of ICU care and ventilation. *Ann Emerg Med*. 2020;76(4):394–404.
237. Salacup G, Lo KB, Gul F, et al. Characteristics and clinical outcomes of COVID-19 patients in an underserved-inner city population: a single tertiary center cohort [e-pub ahead of print]. *J Med Virol*. <https://doi.org/10.1002/jmv.26252>, accessed November 15, 2020.
238. Bhatraju PK, Ghassemieh BJ, Nichols M, et al. COVID-19 in critically ill patients in the Seattle region—case series. *N Engl J Med*. 2020;382(21):2012–2022.
239. Du H, Dong X, Zhang J-J, et al. Clinical characteristics of 182 pediatric COVID-19 patients with different severities and allergic status [e-pub ahead of print]. *Allergy*. <https://doi.org/10.1111/all.14452>, accessed November 15, 2020.
240. Chao JY, Derespina KR, Herold BC, et al. Clinical Characteristics and outcomes of hospitalized and critically ill children and adolescents with coronavirus disease 2019 at a tertiary care medical center in New York City. *J Pediatr*. 2020;223:14–19.e2.
241. Otto WR, Geoghegan S, Posch LC, et al. The epidemiology of SARS-CoV-2 in a pediatric health care network in the United States. *J Pediatric Infect Dis Soc*. 2020;9(5):523–529.
242. DeBiasi RL, Song X, Delaney M, et al. Severe coronavirus disease-2019 in children and young adults in the Washington, DC, metropolitan region. *J Pediatr*. 2020;223:199–203.e1.
243. Lommatzsch M, Stoll P, Virchow JC. COVID-19 in a patient with severe asthma treated with Omalizumab. *Allergy*. 2020;75(10):2705–2708.
244. Matucci A, Ciminati M, Vivarelli E, et al. COVID-19 in severe asthmatic patients during ongoing treatment with biologicals targeting type 2 inflammation: results from a multicenter Italian survey [e-pub ahead of print]. *Allergy*. <https://doi.org/10.1111/all.14516>, accessed November 15, 2020.
245. Renner A, Marth K, Patocka K, Pohl W. COVID-19 in a severe eosinophilic asthmatic receiving benralizumab—a case study. *J Asthma*. June. 2020:1–3.
246. García-Moguel I, Díaz Campos R, Alonso Charterina S, Fernández Rodríguez C, Fernández Crespo J. COVID-19, severe asthma, and biologics. *Ann Allergy Asthma Immunol*. 2020;125(3):357–359.e1.
247. Bhalla A, Mukherjee M, Radford K, et al. Dupilumab, severe asthma airway responses, and SARS-CoV-2 serology [e-pub ahead of print]. *Allergy*. <https://doi.org/10.1111/all.14534>, accessed November 15, 2020.
248. Carugno A, Raponi F, Locatelli AG, et al. No evidence of increased risk for Coronavirus Disease 2019 (COVID-19) in patients treated with Dupilumab for atopic dermatitis in a high-epidemic area—Bergamo, Lombardy, Italy. *J Eur Acad Dermatol Venereol*. 2020;34(9):e433–e434.
249. Caroppo F, Biolo G, Belloni Fortina A. SARS-CoV-2 asymptomatic infection in a patient under treatment with dupilumab. *J Eur Acad Dermatol Venereol*. 2020;34(8):e368.
250. Ordóñez-Rubiano MF, Campo I, Casas M. Dupilumab in atopic dermatitis, a protocol for SARS-COV-2-infected patients [e-pub ahead of print]. *Dermatol Ther*. <https://doi.org/10.1111/dth.14172>, accessed November 15, 2020.
251. Criado PR, Criado RFJ, Pincelli TP, Yoshimoto TA, Naufal GGA, Abdalla BMZ. Chronic spontaneous urticaria exacerbation in a patient with COVID-19: rapid and excellent response to omalizumab. *Int J Dermatol*. 2020;59(10):1294–1295.
252. Ferrucci S, Romagnuolo M, Angileri L, Berti E, Tavecchio S. Safety of dupilumab in severe atopic dermatitis and infection of COVID-19: two case reports. *J Eur Acad Dermatol Venereol*. 2020;34(7):e303–e304.
253. Napolitano M, Patruno C, Ruggiero A, Nocerino M, Fabbrocini G. Safety of dupilumab in atopic patients during COVID-19 outbreak [e-pub ahead of print]. *J Dermatolog Treat*. <https://doi.org/10.1080/09546634.2020.1771257>, accessed November 15, 2020.
254. Abraham RS, Marshall JM, Kuehn HS, et al. Severe SARS-CoV-2 disease in the context of a NF- κ B loss-of-function pathogenic variant [e-pub ahead of print]. *J Allergy Clin Immunol*. <https://doi.org/10.1016/j.jaci.2020.09.020>, accessed November 15, 2020.