


RESEARCH ARTICLE

Open Access



Bone erosion in the 2nd metacarpophalangeal head: association with its bone mineral density by HR-pQCT in rheumatoid arthritis patients

Camille P. Figueiredo^{1*} , Mariana O. Perez¹, Lucas Peixoto Sales¹, Ana Cristina Medeiros², Valeria F. Caparbo¹ and Rosa M. R. Pereira^{1,2*}

Abstract

Background: Rheumatoid arthritis (RA) is a chronic autoimmune disease depicted by synovial inflammation leading to local and systemic bone loss. The aim of this study was to evaluate by a HR-pQCT (High Resolution Peripheral Quantitative Computed Tomography) study which parameters are associated with volume of bone erosions including bone mineral density (BMD) around erosions (VOI 1 to 4 = volume of interest), BMD of metacarpophalangeal (MCP) head, BMD of radius, presence of osteophytes and joint space width (JSW).

Methods: Fifty female RA patients (18–50 years) were enrolled in this study. Demographic and disease-specific data, laboratory inflammatory parameters and handgrip test were performed. All patients underwent HR-pQCT of 2nd and 3rd MCP joints and distal radius, according to established protocols. The volume of bone erosions was evaluated by MIAF (Medical Image Analysis Framework) software. Osteophytes were analyzed by manual method.

Results: The mean of age and disease duration were 40.0 ± 6.0 yrs. and 10.8 ± 4.8 yrs., respectively. According to DAS-28 (Disease Activity Score), 54% (27) of the sample were in remission. However, when SDAI (Simplified Disease Activity Index) was used, only 18% (9) were under remission. The mean of HAQ (Health Assessment Questionnaire), ESR (Erythrocyte sedimentation rate) and CRP (C reactive protein) were 0.9 ± 0.7 , 13.9 ± 12.2 mm and 5.6 ± 7.5 mg/mL, respectively. Forty-six bone erosions (0.9 ± 1.2 erosion/patient) and 14 osteophytes (0.3 ± 0.7 osteophyte/patient) were found in 2nd MCP head. The median (IQR-Interquartile range) of volume of erosion and volume of osteophytes were 14.9 ($5.7;35.9$) mm^3 and 3.1 ($2.1, 4.3$) mm^3 , respectively. The mean of JSW was 80.5 ± 34.2 mm^3 . The volume of bone erosions was negatively correlated with BMD of 2nd MCP head, VOI-4 and JSW; and it was positively correlated with osteophytes number. Regarding absence or presence of erosion in 2nd MCP head, a significant difference was found between BMD of MCP head, osteophyte number and JSW. Multiple linear regression analysis showed that only BMD of 2nd MCP head was independently associated with volume of bone erosions.

(Continued on next page)

* Correspondence: figueiredocamille@gmail.com; rosamariarp@yahoo.com

¹Bone Metabolism Laboratory, Rheumatology Division, Faculdade de Medicina FMUSP Universidade de Sao Paulo, Av. Dr. Arnaldo 455, 3^o andar, sala 3105, Sao Paulo 01246-903, Brazil

Full list of author information is available at the end of the article



© The Author(s). 2021 **Open Access** This article is licensed under a Creative Commons Attribution 4.0 International License, which permits use, sharing, adaptation, distribution and reproduction in any medium or format, as long as you give appropriate credit to the original author(s) and the source, provide a link to the Creative Commons licence, and indicate if changes were made. The images or other third party material in this article are included in the article's Creative Commons licence, unless indicated otherwise in a credit line to the material. If material is not included in the article's Creative Commons licence and your intended use is not permitted by statutory regulation or exceeds the permitted use, you will need to obtain permission directly from the copyright holder. To view a copy of this licence, visit <http://creativecommons.org/licenses/by/4.0/>. The Creative Commons Public Domain Dedication waiver (<http://creativecommons.org/publicdomain/zero/1.0/>) applies to the data made available in this article, unless otherwise stated in a credit line to the data.

(Continued from previous page)

Conclusion: BMD of MCP head was independently associated with volume of bone erosion, suggesting that this parameter should be used to analyze and monitoring bone destruction, as well as to evaluate treatment response in RA patients.

Keywords: HR-pQCT, Bone erosions, Periarticular bone loss

Background

Rheumatoid arthritis (RA) is a chronic inflammatory disease characterized by persistent synovial inflammation and bone loss that might lead to progressive joint damage, especially in small joints of hands and feet, deformities and functional disability [1]. Bone damage in RA is depicted by bone erosions, and these destructions depends on many features as autoantibodies, tight treatment control and disease duration [2].

It is also well established that patients with RA develop both local and systemic bone loss, which is mainly mediated by inflammation [3], leading to an increased fracture risk independently of glucocorticoid use [4]. During early stages of RA, the disease gradually develops joint swelling, stiffness and pain, besides that patients often have a history of long timing symptoms when first presenting to a rheumatologist. Periarticular demineralization of metacarpal bones may already be present at this stage, representing an early radiologic manifestation visible on plain radiographs [5, 6], with a closed association to inflammatory activity in RA [7]. However, data on quantifying periarticular bone loss in RA patients is not precise when standard techniques are used, as plain radiography [8, 9] or dual-energy X-ray absorptiometry (DXA), restricted to areal bone mineral density (aBMD), validated for femur and spine [10, 11].

High-resolution peripheral quantitative computed tomography (HR-pQCT), is an *in vivo* clinical imaging technique, enable to assessment bone microarchitecture quantifying trabecular and cortical bone in radius and tibia [12]. In addition, this technique arises as an important tool to bone structure analysis in inflammatory bone diseases, mainly in RA patients, especially because of its capability in detecting precise dimensions of even small erosions or bone proliferation in metacarpophalangeal (MCP) head [13, 14]. Until now, there are only a few published articles using this technology to evaluate focal bone loss in RA patients, and none of them compared periarticular BMD with volume of bone erosions [15–17]. Besides, it has been proposed that erosions healing starts by bone apposition at the bottom of the lesions, so that the BMD around erosion should be more related to volume of erosions than total metacarpal head BMD, and osteosclerosis could represent healing of erosions [18].

In this way, the aim of this study was to evaluate which parameters are associated with volume of bone

erosions including BMD around erosions, BMD of 2nd metacarpophalangeal head, BMD of radius, presence of osteophytes and joint space width.

Methods

Subjects

Fifty female RA patients were selected to the present study from the Rheumatoid Arthritis Outpatient Clinics from Hospital das Clinicas, Faculdade de Medicina, Universidade de São Paulo, São Paulo-Brazil. All patients between 18 and 50 years who fulfilled the inclusion criteria and accepted to participate were enrolled in this study. The local ethics committee approved the study and all participants read and signed the informed consent for the study.

Demographic and disease-specific data (treatment, disease duration, disease activity) were collected, as well as laboratory specific measures were performed: erythrocyte sedimentation rate (ESR) and C reactive protein (CRP). Swollen joint count-28, tender joint count-28, visual analogue scale for patient and physician global disease activity and visual analogue pain scale were assessed by an experient rheumatologist (MOP), in order to determine DAS-28 (disease activity score) and SDAI (simplified disease activity index).

Exclusion criteria

Exclusion criteria were other associated autoimmune diseases, postmenopausal women, current pregnancy, kidney failure, uncontrolled diabetes, malabsorption diseases, other diseases of the bone metabolism (hyperparathyroidism, Paget's disease and bone dysplasia), neoplasms solid and hematological, and use of bisphosphonates at the current time or in the last year.

HR-pQCT acquisition

All patients underwent scans of distal radius from non-dominant side, and scans of 2nd and 3rd MCP joints of the dominant hand, according to SPECTRA group established protocol [19]. Image acquisition was performed using an XtremeCT first generation scanner from Scanco Medical (Scanco Medical AG, Brüttisellen, Switzerland). Radius scans were performed with a stack of 110 parallel CT slices with an isotropic voxel size of 82 × 82 × 82 mm. For the assessments, the patient's non-dominant forearm was positioned in the thumb-up position according to the manufacturer's standard *in vivo*

protocol [20]. For MCPs analysis, the dominant hand was positioned in an outstretched prone position and padded (Fig. 1). The same custom-made holder was used for all patients' assessments. Scanning was performed within 80 slices distal to and 242 slices proximal to the surface of the third metacarpal head. Motion grade artefacts were characterized to both radius and MCPs analysis, from grades 1 to 5 according to literature [21], and only grades 1 to 3 were used, in case of grades 4 and 5, the scan was repeated.

Distal radius analysis

The images were segmented and processed using a standard protocol (Scanco Medical AG, Brüttisellen, Switzerland) [20]. First, a semi-automated segmentation is applied to the original grayscale image to contour the periosteal surface. After that, the cortical and trabecular regions were segmented automatically by the analysis protocol and then densitometric and structural parameters from HR-pQCT images became available as following: Tt.vBMD (total volumetric bone mineral density), Tb.vBMD (trabecular volumetric bone mineral density) and Ct.vBMD (cortical volumetric bone mineral density), as well as Tb.N (trabecular number), Tb.Th (trabecular thickness), Tb.Sp (trabecular separation) and Ct.Th (cortical thickness).

Peripheral bone changes assessment (erosions and osteophytes)

In order to precisely achieve the relationship between volume of bone erosion with local BMD, in this study we considered only the analysis of 2nd metacarpal heads. However, the scans were done evaluating both 2nd and 3rd MCPs of dominant hand in all patients. For specific site of bone lesions, the metacarpal head was divided into 4 quadrants (I = palmar, II = ulnar, III = dorsal and IV = radial). Erosions were defined as breaks in the

cortical bone shell, which were visible in at least 2 planes, and osteophytes were defined as bony protrusions emerging from the juxta-articular cortical shell that were visible in at least 2 planes [22]. The number of bone lesions in each quadrant was counted. MCP heads with more than one erosion or osteophyte, only the size of the largest lesion was measured.

The erosion volume was evaluated by semi-automated software named MIAF (Medical Image Analysis Framework) that applies a full 3D segmentation of erosions, previously published [14, 23]. Briefly, MCP segmentation is made and the periosteal surface 'closes' the cortical breaks, then the operator places a seed point in each lesion. Then, the erosion is segmented using the level-set method, and inflating a spherical structure centered at the seed point, which stops at trabecular bone, at the same time the periosteal segmentation is used as the edge of the analyzed erosion, after that some manual correction might be assembled by the user if necessary. Besides the erosion volume, MIAF automatically gives the total BMD of metacarpal head, BMD around analyzed erosions, separated by 4 layers [VOI (volume of interest) 1 to 4], both results are given in mg/cm^3 (Fig. 2), and the joint space width, expressed in mm^3 .

Osteophytes were analyzed according to the manual method, previously described [13]. Briefly, after the open-source Digital Imaging and Communication in Medicine viewer (OsiriX software, version 7.5) assessed the images, the osteophytes were considered geometrically as a cone with an axial ellipsoid base. Then, the ellipsoid area multiplied by a perpendicular height of the osteophyte and divided by 3 accounts for the volume in mm^3 .

Statistical analysis

The data analysis was performed using IBM SPSS software, version 22.0. Gaussian distribution was tested by the Kolmogorov-Smirnov test. All data are expressed as



Fig. 1 Photograph of the hand cast used in Bone Metabolism Laboratory, Rheumatology Department, Faculdade de Medicina, University of São Paulo. A palm down orientation is used to evaluate 2nd and 3rd MCP (metacarpophalangeal) and PIP (Proximal Interphalangeal) joints

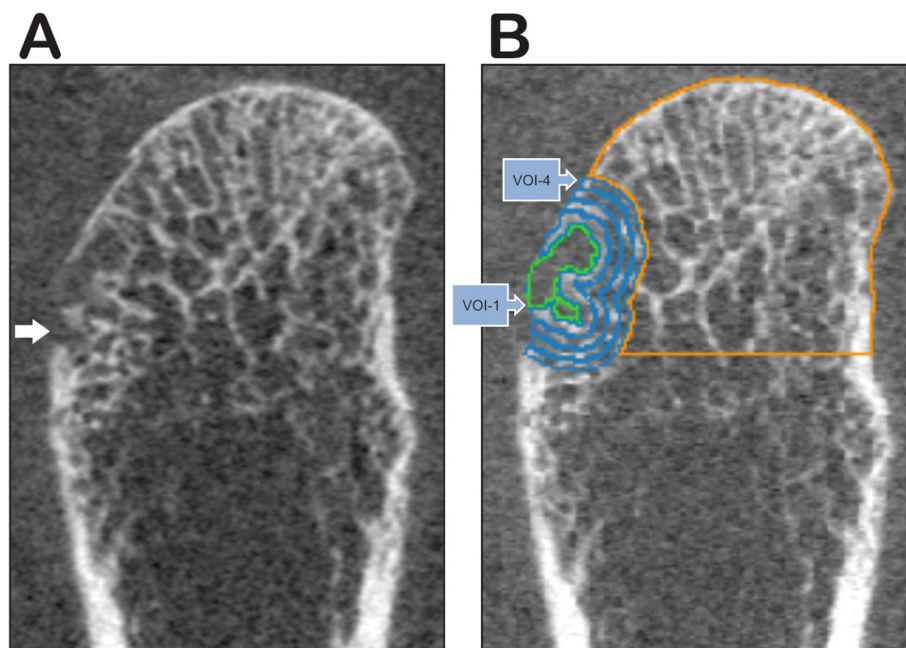


Fig. 2 HR-pQCT imaging of 2nd metacarpophalangeal head (MCP) from RA patient in a coronal plane. **a** Bone surface of the metacarpal head with an erosion (white arrow). **b** erosion Demonstration of bone segmentation by Medical Image Analysis Framework software (MIAF): bone mineral density (BMD) of MCP analyzed in orange line; erosion segmentation placed on radial quadrant (quadrant IV) in green line; and around the analyzed erosion 4 layers of segmented BMD (Volume of Interest: VOI) in blue lines

mean and standard deviation (SD), number (%) or median and interquartile range (IQR), as appropriate. Spearman's correlation test was applied in order to assess the interdependence of structural and densitometric parameters. Presence or absence of erosions in 2nd MCP head subgroups was compared using Mann-Whitney test. A multiple linear regression was calculated using the stepwise forward method, considering $p < 0.05$ as level of inclusion and the volumetric trabecular BMD of radius (representative of systemic bone loss), with volume of erosion used as a dependent variable. P values less than 0.05 were considered significant.

Results

In this cross-sectional study, 50 female patients with established RA were enrolled. All demographic, clinical and laboratory parameters are described in Table 1. When DAS-28 is considered, 54% ($n = 27$) of all patients were under remission, on the other hand, when SDAI analysis is used, remission is found in only 18% (9) patients. The mean of handgrip evaluation was 18.0 ± 7.3 N, which is accountable for lower strength compare to healthy women at the same age (around 28 N) [24]. Regarding the current treatment during the study, 62% (31) of all analyzed women were using glucocorticoids, 94% (47) received conventional Disease Modifying Anti-Rheumatic Drugs (DMARDs) and 43% (21) were in treatment with biological DMARDs.

In order to correlate the BMD around erosive lesions with volume of these erosions with more precision, considering that the great majority of all bone lesions in the hand are found at the 2nd MCP joints, it was analyzed here only data of the 2nd MCP head. Forty-six erosions (0.9 ± 1.2 erosion per patient), with an erosion volume median (IQR) of 14.9 ($5.7; 35.9$) mm^3 were found in the 2nd MCP head. It was also found 15 osteophytes (0.3 ± 0.7 osteophyte per patient), with a volume median (IQR) of 3.1 ($2.1; 4.3$) mm^3 . The joint space width was 80.5 ± 34.9 mm^3 . Descriptive data of all BMD values are described in Table 2.

Not surprisingly, the volume of bone erosions were significantly correlated with number of erosions ($r = 0.82$, $p < 0.001$). Moreover, volume of bone erosions was negatively correlated with BMD in 2nd MCP head ($r = -0.53$, $p < 0.001$), VOI-4 ($r = -0.48$, $p = 0.017$) and joint space width ($r = -0.40$, $p = 0.005$) and positively correlated with number of osteophytes ($r = 0.32$, $p = 0.026$). Furthermore, the sample was categorized by absence or presence of erosion in 2nd MCP head (Table 3) and a significant difference was found regarding to BMD of 2nd MCP head (321.5 ± 37.1 vs. 281.3 ± 67.6 mg/cm^3 , $p = 0.043$) (Fig. 3), number of osteophyte (0.1 ± 0.4 vs. 0.5 ± 0.8 , $p = 0.028$) and joint space width (93.5 ± 36.9 vs. 68.2 ± 28.3 , $p = 0.025$).

A multiple linear regression was performed using volume of bone erosion as dependent variable, and as

Table 1 Demographic and clinical characteristics of the RA patients enrolled in the study

Variables	N = 50
Clinical parameters	
Age, years	40.0 ± 6.0
Disease duration, Years	10.8 ± 4.8
Disease activity score-28 (DAS-28)	2.7 (2.1; 3.1)
Remission, N(%)	27 (54%)
Mild disease activity, N(%)	5 (10%)
Moderate disease activity, N(%)	17 (34%)
High disease activity, N(%)	1 (2%)
SDAI	10.9 ± 8.2
Remission, N(%)	9 (18%)
Mild disease activity, N(%)	18 (36%)
Moderate disease activity, N(%)	20 (40%)
High disease activity, N(%)	3 (6%)
Hand Grip, N	18.0 ± 7.3
Current Treatment	
Glucocorticoids, N(%)	31 (62%)
conventional DMARDs, N(%)	47 (94%)
biological DMARDs, N(%)	21 (43%)
HAQ	0.9 ± 0.7
Laboratory Parameters	
ESR, mm/h	13.9 ± 12.2
CRP, mg/L	5.6 ± 7.5

The results are expressed as mean ± standard deviation (SD), mean (IQR = interquartile range) or N(%). *SDAI* Simplified disease activity index, *DMARD* Disease Modifying Anti-Rheumatic Drugs, *HAQ* Health assessment questionnaire, *ESR* Erythrocyte sedimentation rate, *CRP* C reactive protein

Table 2 Bone mineral density values of all HR-pQCT analyzed sites

HR-pQCT Site	BMD
2nd MCP head (number of patients = 50). mg/cm³	302.6 ± 56.6
Layers around erosion (number of patients = 26). mg/cm³	
VOI-1	393.8 ± 81.2
VOI-2	347.7 ± 91.7
VOI-3	321.8 ± 78.3
VOI-4	304.9 ± 79.0
Radius (number of patients = 49). g/cm³	
Ct.vBMD	868.8 ± 64.4
Tb.vBMD	152.7 ± 40.3

The results are expressed as mean ± standard deviation (SD). *BMD* Bone Mineral Density, *Ct.vBMD* Cortical volumetric bone mineral density, *Tb.vBMD* Trabecular volumetric bone mineral density, *VOI* Volume of Interest

independent variables it was used number of erosions, number of osteophytes, joint space width, BMD of 2nd MCP head, VOI-4 and volumetric trabecular BMD of radius. The multivariate analysis found that BMD of 2nd MCP head was the only variable associated with volume of bone erosion ($B = -0.81$, $p = 0.003$, adjusted $R^2 = 0.32$).

Discussion

Our study demonstrated that BMD of 2nd MCP head was the only variable independently associated with erosion size, showing that bone mineral density of total MCP head is rather more important than BMD around erosions (presence or absence of osteosclerosis at the bottom of some erosive lesions), BMD at distal radius, presence of osteophytes and joint space width.

Many studies in RA patients have demonstrated an association between bone erosions and the development of local and systemic bone loss, as osteopenia and osteoporosis [25, 26]. It is also well known that this periarticular osteopenia is the earliest radiographic change in RA patients, prior to the development of erosions [5]. However, the exactly site of joint related to bone erosion has not yet been evaluated and quantified. Black et al. [11] identified patients who were at risk of developing erosive disease at 12 months studying total hand BMD by DXA and erosions through hand and feet radiographs, scored using van der Heijde modification of the Sharp method. However, DXA method evaluates areal BMD, and HR-pQCT is able to analyze volumetric BMD. Moreover, it has been demonstrated that HR-pQCT scans allow detailed identification of articular bone damage [22, 27]. Besides that, through MIAF, the software we used here for bone erosions analysis, it was possible quantifying precisely both bone erosions in cubic millimeters (mm³) and periarticular bone loss [20, 28], as well as focal BMD around erosions [14]. Digital x-ray radiogrammetry is another method frequently used in many studies to assess hand or MCP BMD in arthritis patients, showing a good correlation between local bone loss and disease progression, but this still represents a semiquantitative method [7, 29, 30].

On the other hand, perilesional bone has been associated with erosion progression, and findings of osteosclerosis in this region might represent healing of erosions, even though these outcomes were evaluated according to semiquantitative scores, suggesting that BMD around erosions could be more associate with the volume of destructive lesions than BMD in other sites [31, 32].

Bone damage arises early in the course of RA [33]. Currently, the treat-to-target main purpose of RA management is based on prompt detection and control of erosion size, which represents directly the local amount of bone destruction. After the introduction of biologic

Table 3 The sample was categorized by the presence or not of bone erosions in 2nd MCP head

Variables	Absence of Erosion (N = 24)	Presence of Erosion (N = 26)	P
Age, years	39.7 ± 6.3	40.6 ± 5.5	0.594
Disease duration, years	10.7 ± 5.3	11.2 ± 4.4	0.831
DAS-28	2.5 ± 1.3	2.6 ± 0.8	0.815
SDAI	12.8 ± 8.8	10.2 ± 8.0	0.271
HAQ	1.0 ± 0.7	0.7 ± 0.6	0.271
Hand Grip, N	18.6 ± 7.8	17.6 ± 6.5	0.670
Number of Osteophyte	0.1 ± 0.4	0.5 ± 0.8	0.028 ^a
BMD of MCP head, mg/cm ³	321.5 ± 37.1	281.3 ± 67.6	0.043 ^a
Joint space width, mm ³	93.5 ± 36.9	68.2 ± 28.3	0.025 ^a
Radio			
Ct.vBMD, mg HA/cm ³	875.1 ± 58.7	865.5 ± 70.1	0.602
Tb.vBMD, mg HA/cm ³	147.4 ± 39.1	155.6 ± 43.6	0.109
Tibia			
Ct.vBMD, mg HA/cm ³	925.7 ± 33.3	905.2 ± 49.5	0.215
Tb.vBMD, mg HA/cm ³	139.2 ± 32.2	149.2 ± 34.6	0.382

The results are expressed as mean ± standard deviation (SD). DAS-28 Disease activity score 28, SDAI Simplified disease activity index, HAQ Health assessment questionnaire, BMD Bone mineral density. MCP Metacarpophalangeal, Ct.vBMD Cortical volumetric bone mineral density, Tb.vBMD Trabecular volumetric bone mineral density. ^aStatistical significance

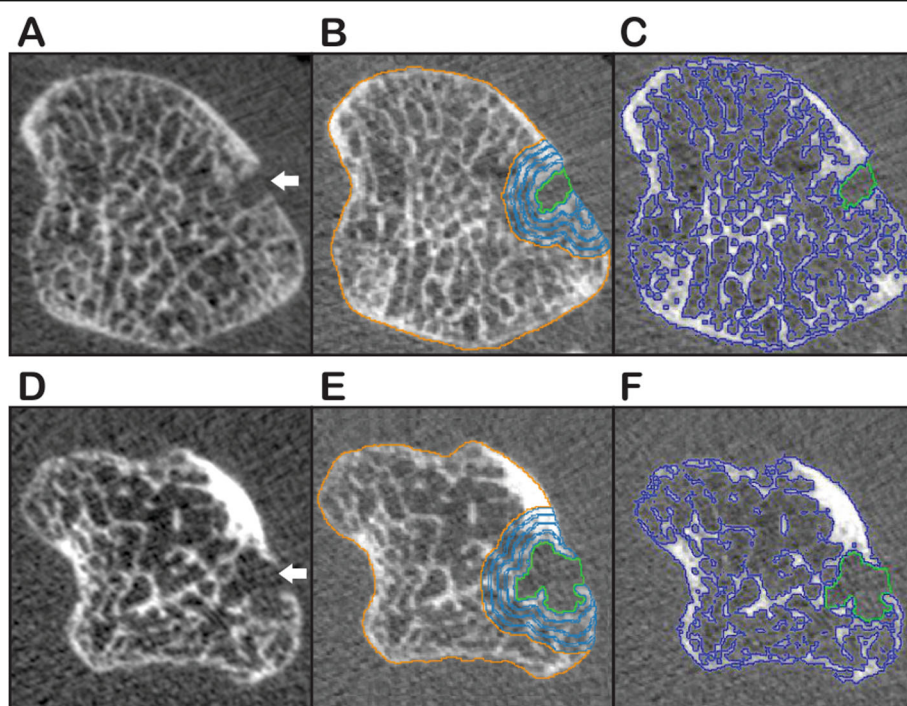


Fig. 3 Axial plane of 2nd metacarpophalangeal head (MCP) from RA patients using HR-pQCT scan comparing two individuals with erosion on radial quadrant (quadrant IV). First patient (a, b and c): a metacarpal head with no segmentation, showing the bone erosion (white arrow); b Segmented erosion with volume = 6.75 mm³ with 4 layers of segmented bone mineral density (BMD) (Volume of Interest: VOI) in blue lines, and orange line represents BMD of MCP analyzed; c demonstration of evaluated BMD of MCP in purple contouring, with total amount of 314.94 mg/cm³. Second patient (d, e and f): d Metacarpal head with the bone erosion with no segmentation (white arrow); e Segmentation of a bigger erosion, volume = 19.33 mm³, besides 4 layers of segmented BMD in blue lines and f MCP segmented in purple contouring, that represents a BMD = 284.63 mg/cm³

therapies, precise procedures have been required to recognize parameters that could be associated with bone damage. In fact, this is one of the main purposes at RA studies, since it could allow an identification and selection of patients for more intensive therapy, including earlier addition of biologic agents, in order to limit severity and disease progression. Furthermore, it has been shown that routine disease activity biomarkers are not good predictors for radiologic progression damage in RA patients [34, 35]. Antibodies to cyclic citrullinated peptide (anti-CCP), CRP, other inflammatory markers levels, and initial radiographic damage are currently used to distinguish patients at greatest risk for increasing progressive bone destruction, in order to achieve aggressive treatment strategies in designated group of RA patients [36, 37]. Additionally, despite the advent of biologic agents, RA remains leading to joint destruction in most of the patients. In this way, identifying parameters that might be used for prediction of patients at risk of erosion progression is the target of most studies. Thus, the results of this study can be used to speculate that, in longitudinal investigations, it might be possible to identify earlier structural bone changes as peri-articular bone loss, distinguishing patients who have a rapid radiographic progressive erosive RA from those with more insidious disease.

However, our study is not without limitations, as the size of the sample, as well as the analysis of only women. Nonetheless, RA is a disease typical found in female. Another limitation is the fact that both machine (HR-pQCT) and software (MIAF) are not widespread used, being found mainly in research centers. Further longitudinal studies may be needed, with both male and female genders to extend the findings.

Summarizing, our data showed that volume of erosions are closely and negatively associated with peri-articular bone mineral density. Even when different BMD sites were analyzed as distal radius or BMD around erosions, periarticular bone loss remained the most important variable associated to the amount of bone destruction. Because detection of erosion size is an important goal in tracking RA progression and evaluating therapeutic reaction, our paper suggests that BMD of MCP head could be a helpful parameter to analyze and monitoring bone destruction, as well as to evaluate treatment response in RA patients.

Abbreviations

RA: Rheumatoid Arthritis; HR-pQCT: High Resolution Peripheral Quantitative Computed Tomography; BMD: Bone Mineral Density; VOI: Volume of Interest; MCP: Metacarpophalangeal; JSW: Joint Space Width; MIAF: Medical Image Analysis Framework; DAS: Disease Activity Score; SDAI: Simplified Disease Activity Index; HAQ: Health Assessment Questionnaire; ESR: Erythrocyte Sedimentation Rate; CRP: C Reactive Protein; IQR: Interquartile Range; DXA: Dual-energy X-ray absorptiometry; aBMD: Areal Bone Mineral Density; Tt.vBMD: Total volumetric bone mineral density; Tb.vBMD: Trabecular volumetric bone mineral density; Ct.vBMD: Cortical volumetric bone mineral density; Tb.N: Trabecular number; Tb.Th: Trabecular thickness;

Tb.Sp: Trabecular separation; Ct.Th: Cortical thickness; SD: Standard deviation; DMARDs: Disease Modifying Anti-Rheumatic Drugs; anti-CCP: Antibodies to cyclic citrullinated peptide

Authors' contributions

CF was responsible for conception, imaging analysis, interpretation the data and drafted the manuscript, MO was responsible for acquisition the data, interpretation the data and critically revised the paper, LS was responsible for interpretation of the data and critically revised the paper, ACM was responsible for acquisition the data and critically revised the paper, VC was responsible for acquisition the data and imaging analysis, RP was responsible for conception, interpretation the data and critically revised the manuscript. All authors read and approved the final manuscript.

Funding

Camille P. Figueiredo was supported by Fundação de Amparo à Pesquisa do Estado de São Paulo (FAPESP 2018/01315–9). This work was supported by FAPESP 2016/00006–7 (RMRP).

Availability of data and materials

The datasets analyzed during the current study are available from the corresponding author on reasonable request.

Ethics approval and consent to participate

The Ethic Committee from Hospital das Clinicas da faculdade de Medicina FMSUP da Universidade de Sao Paulo has approved the work (CAAE: 51178115.1.0000.0068). All participants read and signed the informed consent for the study.

Consent for publication

Not applicable.

Competing interests

The authors declare that they have no competing interests.

Author details

¹Bone Metabolism Laboratory, Rheumatology Division, Faculdade de Medicina FMUSP Universidade de Sao Paulo, Av. Dr. Arnaldo 455, 3° andar, sala 3105, Sao Paulo 01246-903, Brazil. ²Rheumatology Division, Hospital das Clinicas HCFMUSP, Faculdade de Medicina FMUSP Universidade de Sao Paulo, Sao Paulo, SP, Brazil.

Received: 24 September 2020 Accepted: 19 January 2021

Published online: 25 January 2021

References

- McInnes IB, Schett G. The pathogenesis of rheumatoid arthritis. *N Engl J Med*. 2011;365(23):2205–19.
- Visser K, Goekoop-Ruiterman YP, de Vries-Bouwstra JK, Roodman CD, Seys PE, Kerstens PJ, Huizinga TW, Dijkman BA, Allaart CF. A matrix risk model for the prediction of rapid radiographic progression in patients with rheumatoid arthritis receiving different dynamic treatment strategies: post hoc analyses from the BeSt study. *Ann Rheum Dis*. 2010;69(7):1333–7.
- Roux C. Osteoporosis in inflammatory joint diseases. *Osteoporos Int*. 2011; 22(2):421–33.
- van Staa TP, Geusens P, Bijlsma JW, Leufkens HG, Cooper C. Clinical assessment of the long-term risk of fracture in patients with rheumatoid arthritis. *Arthritis Rheum*. 2006;54(10):3104–12.
- Brook A, Corbett M. Radiographic changes in early rheumatoid disease. *Ann Rheum Dis*. 1977;36(1):71–3.
- Grassi W, De Angelis R, Lamanna G, Cervini C. The clinical features of rheumatoid arthritis. *Eur J Radiol*. 1998;27(Suppl 1):S18–24.
- Pfeil A, Haugeberg G, Renz DM, Reinhardt L, Jung C, Franz M, Wolf G, Böttcher J. Digital X-ray radiogrammetry and its sensitivity and specificity for the identification of rheumatoid arthritis-related cortical hand bone loss. *J Bone Miner Metab*. 2017;35(2):192–8.
- Sivas F, Barça N, Onder M, Ozoran K. The relation between joint erosion and generalized osteoporosis and disease activity in patients with rheumatoid arthritis. *Rheumatol Int*. 2006;26(10):896–9.
- Böttcher J, Pfeil A, Rosholm A, Petrovitch A, Seidl BE, Malich A, Schäfer ML, Kramer A, Mentzel HJ, Lehmann G, et al. Digital X-ray radiogrammetry

- combined with semiautomated analysis of joint space widths as a new diagnostic approach in rheumatoid arthritis: a cross-sectional and longitudinal study. *Arthritis Rheum.* 2005;52(12):3850–9.
10. Pfeil A, Nussbaum A, Renz DM, Jung C, Oelzner P, Malich A, Wolf G, Böttcher J. Inhibition of periarticular bone loss is associated with clinical remission and ACR70-response in rheumatoid arthritis. *Rheumatol Int.* 2019;39(4):637–45.
 11. Black RJ, Spargo L, Schultz C, Chatterton B, Cleland L, Lester S, Hill CL, Proudman SM. Decline in hand bone mineral density indicates increased risk of erosive change in early rheumatoid arthritis. *Arthritis Care Res (Hoboken).* 2014;66(4):515–22.
 12. Liu XS, Cohen A, Shane E, Yin PT, Stein EM, Rogers H, Kokolus SL, McMahon DJ, Lappe JM, Recker RR, et al. Bone density, geometry, microstructure, and stiffness: relationships between peripheral and central skeletal sites assessed by DXA, HR-pQCT, and cQCT in premenopausal women. *J Bone Miner Res.* 2010;25(10):2229–38.
 13. Figueiredo CP, Simon D, Englbrecht M, Haschka J, Kleyer A, Bayat S, Hueber A, Pereira RM, Rech J, Schett G. Quantification and impact of secondary osteoarthritis in patients with anti-Citrullinated protein antibody-positive rheumatoid arthritis. *Arthritis Rheumatol.* 2016;68(9):2114–21.
 14. Figueiredo CP, Kleyer A, Simon D, Stemmler F, d'Oliveira I, Weissenfels A, Museyko O, Friedberger A, Hueber AJ, Haschka J, et al. Methods for segmentation of rheumatoid arthritis bone erosions in high-resolution peripheral quantitative computed tomography (HR-pQCT). *Semin Arthritis Rheum.* 2018;47(5):611–8.
 15. Kocijan R, Finzel S, Englbrecht M, Engelke K, Rech J, Schett G. Decreased quantity and quality of the periarticular and nonperiarticular bone in patients with rheumatoid arthritis: a cross-sectional HR-pQCT study. *J Bone Miner Res.* 2014;29(4):1005–14.
 16. Kleyer A, Finzel S, Rech J, Manger B, Krieter M, Faustini F, Araujo E, Hueber AJ, Harre U, Engelke K, et al. Bone loss before the clinical onset of rheumatoid arthritis in subjects with anticitrullinated protein antibodies. *Ann Rheum Dis.* 2014;73(5):854–60.
 17. Feehan LM, Li LL, McKay HA. Micro-structural bone changes in early rheumatoid arthritis persist over 1-year despite use of disease modifying anti-rheumatic drug therapy. *BMC Musculoskelet Disord.* 2017;18(1):521.
 18. Finzel S, Rech J, Schmidt S, Engelke K, Englbrecht M, Stach C, Schett G. Repair of bone erosions in rheumatoid arthritis treated with tumour necrosis factor inhibitors is based on bone apposition at the base of the erosion. *Ann Rheum Dis.* 2011;70(9):1587–93.
 19. Barnabe C, Toepfer D, Marotte H, Hauge EM, Scharnaga A, Kocijan R, Kraus S, Boutroy S, Schett G, Keller KK, et al. Definition for rheumatoid arthritis erosions imaged with high resolution peripheral quantitative computed tomography and Interreader reliability for detection and measurement. *J Rheumatol.* 2016;43(10):1935–40.
 20. Boutroy S, Buxsein ML, Munoz F, Delmas PD. In vivo assessment of trabecular bone microarchitecture by high-resolution peripheral quantitative computed tomography. *J Clin Endocrinol Metab.* 2005;90(12):6508–15.
 21. Píalát JB, Burghardt AJ, Sode M, Link TM, Majumdar S. Visual grading of motion induced image degradation in high resolution peripheral computed tomography: impact of image quality on measures of bone density and micro-architecture. *Bone.* 2012;50(1):111–8.
 22. Stach CM, Bäuerle M, Englbrecht M, Kronke G, Engelke K, Manger B, Schett G. Periarticular bone structure in rheumatoid arthritis patients and healthy individuals assessed by high-resolution computed tomography. *Arthritis Rheum.* 2010;62(2):330–9.
 23. Töpfer D, Finzel S, Museyko O, Schett G, Engelke K. Segmentation and quantification of bone erosions in high-resolution peripheral quantitative computed tomography datasets of the metacarpophalangeal joints of patients with rheumatoid arthritis. *Rheumatology (Oxford).* 2014;53(1):65–71.
 24. Amaral CA, Amaral TLM, Monteiro GTR, Vasconcelos MTL, Portela MC. Hand grip strength: reference values for adults and elderly people of Rio Branco, Acre, Brazil. *PLoS One.* 2019;14(1):e0211452.
 25. Güler-Yüksel M, Allaart CF, Goekoop-Ruiterman YP, de Vries-Bouwstra JK, van Groenendaal JH, Mallée C, de Bois MH, Breedveld FC, Dijkmans BA, Lems WF. Changes in hand and generalised bone mineral density in patients with recent-onset rheumatoid arthritis. *Ann Rheum Dis.* 2009;68(3):330–6.
 26. Pye SR, Adams JE, Ward KA, Bunn DK, Symmons DP, O'Neill TW. Disease activity and severity in early inflammatory arthritis predict hand cortical bone loss. *Rheumatology (Oxford).* 2010;49(10):1943–8.
 27. Albrecht A, Finzel S, Englbrecht M, Rech J, Hueber A, Schlechtweg P, Uder M, Schett G. The structural basis of MRI bone erosions: an assessment by microCT. *Ann Rheum Dis.* 2013;72(8):1351–7.
 28. Simon D, Kleyer A, Stemmler F, Simon C, Berlin A, Hueber AJ, Haschka J, Renner N, Figueiredo C, Neuhuber W, et al. Age- and sex-dependent changes of intra-articular cortical and trabecular bone structure and the effects of rheumatoid arthritis. *J Bone Miner Res.* 2017;32(4):722–30.
 29. Pfeil A, Thodberg HH, Renz DM, Reinhardt L, Oelzner P, Wolf G, Böttcher J. Metacarpal bone loss in patients with rheumatoid arthritis estimated by a new digital X-ray Radiogrammetry method - initial results. *BMC Musculoskelet Disord.* 2017;18(1):6.
 30. Mangnus L, van Steenberg HW, Rejnierse M, Kälvesten J, van der Helm-Van Mil A. Bone mineral density loss in clinically suspect arthralgia is associated with subclinical inflammation and progression to clinical arthritis. *Scand J Rheumatol.* 2017;46(5):364–8.
 31. Finzel S, Rech J, Schmidt S, Engelke K, Englbrecht M, Schett G. Interleukin-6 receptor blockade induces limited repair of bone erosions in rheumatoid arthritis: a micro CT study. *Ann Rheum Dis.* 2013;72(3):396–400.
 32. Yue J, Griffith JF, Xiao F, Shi L, Wang D, Shen J, Wong P, Li EK, Li M, Li TK, et al. Repair of bone erosion in rheumatoid arthritis by Denosumab: a high-resolution peripheral quantitative computed tomography study. *Arthritis Care Res (Hoboken).* 2017;69(8):1156–63.
 33. van der Heijde DM. Joint erosions and patients with early rheumatoid arthritis. *Br J Rheumatol.* 1995;34(Suppl 2):74–8.
 34. Machold KP, Stamm TA, Nell VP, Pflugbeil S, Aletaha D, Steiner G, Uffmann M, Smolen JS. Very recent onset rheumatoid arthritis: clinical and serological patient characteristics associated with radiographic progression over the first years of disease. *Rheumatology (Oxford).* 2007;46(2):342–9.
 35. Jansen LM, van der Horst-Bruinsma IE, van Schaardenburg D, Bezemer PD, Dijkmans BA. Predictors of radiographic joint damage in patients with early rheumatoid arthritis. *Ann Rheum Dis.* 2001;60(10):924–7.
 36. Jansen LM, van Schaardenburg D, van der Horst-Bruinsma I, van der Stadt RJ, de Koning MH, Dijkmans BA. The predictive value of anti-cyclic citrullinated peptide antibodies in early arthritis. *J Rheumatol.* 2003;30(8):1691–5.
 37. Drossaers-Bakker KW, Zwiderman AH, Vliet Vlieland TP, Van Zeben D, Vos K, Breedveld FC, Hazes JM. Long-term outcome in rheumatoid arthritis: a simple algorithm of baseline parameters can predict radiographic damage, disability, and disease course at 12-year followup. *Arthritis Rheum.* 2002; 47(4):383–90.

Publisher's Note

Springer Nature remains neutral with regard to jurisdictional claims in published maps and institutional affiliations.

Ready to submit your research? Choose BMC and benefit from:

- fast, convenient online submission
- thorough peer review by experienced researchers in your field
- rapid publication on acceptance
- support for research data, including large and complex data types
- gold Open Access which fosters wider collaboration and increased citations
- maximum visibility for your research: over 100M website views per year

At BMC, research is always in progress.

Learn more biomedcentral.com/submissions

