

This article is licensed under a Creative Commons Attribution-NonCommercial NoDerivatives 4.0 International License.

The Biological Effects of Dickkopf1 on Small Cell Lung Cancer Cells and Bone Metastasis

Hailin Pang,¹ Ningqiang Ma,¹ Mi Jiao, Weiwei Shen, Bo Xin, Tongfei Wang, Feng Zhang, Lili Liu, and Helong Zhang

Department of Oncology, Tangdu Hospital, the Fourth Military Medical University, Xi'an, Shaanxi, P.R. China

The bone is among the most common sites of metastasis in patients with lung cancer. Over 30%–40% of lung cancers can develop bone metastasis, and no effective therapeutic methods exist in clinic cases. Wnt/ β -catenin signaling and Dickkopf1 (DKK1) play important roles in the progression of lung cancer, which preferentially metastasizes to the skeleton. However, the role of DKK1 in osteotropism of small cell lung cancer (SCLC) remains to be elucidated. This study aimed to define the role of DKK1 in SCLC bone metastasis and investigate the underlying mechanisms. Our results demonstrated that the expression level of DKK1 was dramatically higher in bone metastatic SCLC cells (SBC-5 cell line) compared with that in cells without bone metastatic ability (SBC-3 cell line). Therefore, we hypothesized that DKK1 was involved in the bone metastasis of SCLC. We then suppressed the DKK1 expression in SBC-5 cells by RNAi and found that downregulation of DKK1 can inhibit cell proliferation, colony formation, cell migration, and invasion, but increase the apoptosis rate. Downregulation of DKK1 did not affect the cell cycle progression of SBC-5 cells in vitro. In vivo, downregulated DKK1 in SBC-5 cells resulted in attenuated bone metastasis. These results indicated that DKK1 may be an important regulator in bone metastases of SCLC, and targeting DKK1 may be an effective method to prevent and treat skeleton metastases in SCLC cases.

Key words: Dickkopf1 (DKK1); Bone metastasis; Small cell lung cancer (SCLC)

INTRODUCTION

It was reported that 14.1 million new cancer cases and 8.2 million cancer deaths occurred in 2012 worldwide. Lung cancer is the most common cancer in the world, in terms of both morbidity (1.8 million cases, 12.9% of total) and mortality (1.6 million deaths, 19.4%) because of high case fatality¹.

The bone is among the most common sites of metastasis in patients with lung cancer and, in particular, bone metastasis is often associated with skeletal-related events (SREs) including bone pain, hypercalcemia, pathological fractures, spinal cord compression, and bone marrow infiltration, all of which may decrease the quality of life^{2–4}. Therefore, effective therapeutic methods for preventing bone metastasis of lung cancer are urgently needed. However, the precise mechanisms of bone metastasis are still not completely understood.

Dickkopf1 (DKK1), a secreted protein, is known as a negative regulator of the Wnt signaling pathway⁵. The Wnt signaling pathway plays an essential role in determining

cell fate and regulating cell proliferation. Dysregulation of this pathway can lead to some developmental defects and cancer⁶. Several studies suggested that DKK1 was involved in bone metastasis in cancer, such as breast cancer⁶ and prostate cancer (PC)^{7,8}. Recently, a study has shown that the serum DKK1 level with bone metastasis was exclusively higher than the level without bone metastasis in non-small cell lung cancer (NSCLC) patients, and lung cancer cell-produced DKK1 may be related to NSCLC and its bone metastasis⁹. However, the autocrine function of DKK1, as well as the underlying mechanisms, is still unknown. Furthermore, no studies have elucidated the biological effect of DKK1 on the small cell lung cancer (SCLC) and its bone metastasis. In this study, we interfered the DKK1 expression by lentiviral vector-mediated RNAi and then detected changes regarding cell behavior in vitro, including invasion, migration, proliferation, apoptosis, and cell cycle. We then investigated the effect of downregulation of DKK1 expression on bone metastasis in vivo

¹These authors provided equal contribution to this work.

Address correspondence to Professor Lili Liu, Department of Oncology, Tangdu Hospital, the Fourth Military Medical University, Xi'an, Shaanxi 710038, P.R. China. E-mail: lily123fmmu@163.com or Professor Helong Zhang, Department of Oncology, Tangdu Hospital, the Fourth Military Medical University, Xi'an, Shaanxi 710038, P.R. China. E-mail: cnxazhl@163.com

Table 1. Primers for RT-PCR

Gene	Forward Primer (5'–3')	Reverse Primer (5'–3')
DKK1	TAGAGTCTAGAATGCAAGGATCTC	CAAAAACATACACAGCCTAAAGGG
β -Actin	TGGCACCCAGCACAATGAA	CTAAGTCATAGTCCGCTAGAAGCA

based on a multiple-organ metastasis model of human SCLC cells, which is a classical model established previously in NK cell-depleted SCID mice by S. Yano. Our data demonstrated that DKK1 was closely related to the osteotropism metastasis of SCLC and may be a critical contributor to tumors for the development of bone metastases. It provided a promising target for the prevention and effective treatment of bone metastases.

MATERIALS AND METHODS

Cell Culture

The human SCLC cell lines SBC-5 and SBC-3 were gifts from Professors Sone and Yano (Tokushima University, Japan). They were maintained at 37°C with 5% CO₂ in RPMI-1640 (Gibco, Gaithersburg, MD, USA) supplemented with 10% (v/v) heated-inactivated fetal bovine serum (FBS; Bio International), 100 U/ml streptomycin, and 100 U/ml penicillin.

Real-Time (RT)-PCR Assay

Total RNA was extracted using TRIzol reagent (Invitrogen, Carlsbad, CA, USA) according to the manufacturer's instructions. RNA (500 ng) was subjected to reverse transcription. Real-time polymerase chain reaction (RT-PCR) was carried out using SYBR Premix Ex Taq II (Takara, Japan), and the results were analyzed using the comparative threshold cycle (Ct) method for relative quantification. The PCR primers used are shown in Table 1.

Western Blot Analysis

After quantification using the BCA kit, 20 μ g of boiled protein dissolved in loading buffer was separated on 8% SDS-polyacrylamide gels and then transferred to nitrocellulose membranes. It was then incubated overnight with mouse polyclonal antibodies against DKK1 (1:1,500; Bioworld) and β -actin (1:10,000; Sigma). Secondary antibodies (1:5,000; anti-mouse) were applied, and the relative content of the target proteins was detected by chemiluminescence.

Cells Stable Transfection

DKK1 RNAi plasmids (Table 2) were obtained from Genechem (Shanghai, P.R. China). The plasmids were transfected into SBC-5 cells using Lipofectamine 2000 following the manufacturer's instructions. The transfected cells were selected with medium containing 1 μ g/ml puromycin from the second day. After 1 month of transfection, puromycin-resistant colonies were isolated with limiting dilution and expanded. The stably transfected cells were designated as SBC-5-Ri-DKK1 and maintained in growth medium containing 0.5 μ g/ml puromycin.

MTT Assay

Cells at 80% confluence were harvested and placed into 96-well plates (2,000 cells/well, five wells for each group). Every day one plate was taken for MTT analysis. MTT solution (20 μ l) (5 mg/ml) was added into every well, and then the cells were incubated at

Table 2. Information of shRNA Targeting the Human DKK1 Gene

Symbol/ID	Target Sequence	Sequence (5'–3')
Ri-DKK1-12	GCCGGATACAGAAAGATCACCATCA	
DKK1-RNAi (31612-1)-a		CcggGCCGGATACAGAAAGATCACCATCACTCGA GTGATGGTGATCTTTCTGTATCCGGCTTTTTg
DKK1-RNAi (31612-1)-b		aattcaaaaaGCCGGATACAGAAAGATCACCATCAC TCGAGTGATGGTGATCTTTCTGTATCCGGC
Ri-DKK1-13	GTATCACACCAAAGGACAAGAAGGT	
DKK1-RNAi (31613-1)-a		CcggGTATCACACCAAAGGACAAGAAGGTCTCG AGACCTTCTGTCTTTGGTGTGATACTTTTTg
DKK1-RNAi (31613-1)-b		aattcaaaaaGTATCACACCAAAGGACAAGAAGG TCTCGAGACCTTCTGTCTTTGGTGTGATAC
Ri-DKK1-14	AGAACGGAAGTGTGATATGTTTAA	
DKK1-RNAi (31614-1)-a		CcggAGAACGGAAGTGTGATATGTTTAAACTCGA GTTTAAACATATCACACTTCCGTTCTTTTTg
DKK1-RNAi (31614-1)-b		aattcaaaaaAGAACGGAAGTGTGATATGTTTAA ACTCGAGTTTAAACATATCACACTTCCGTTCT

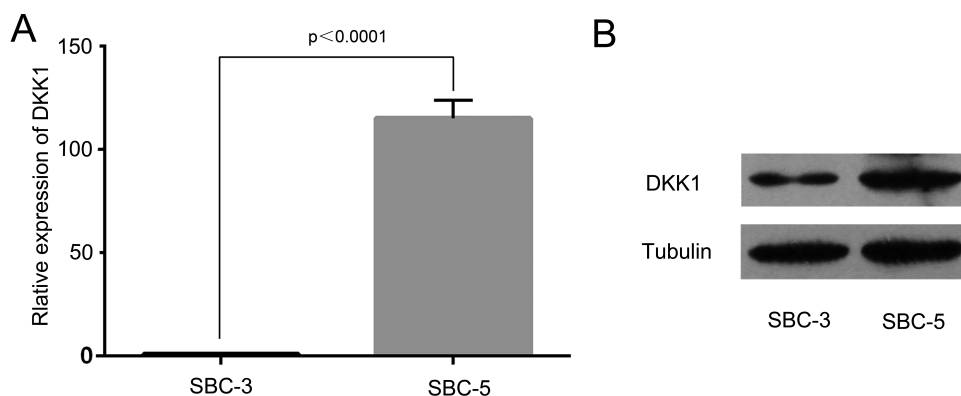


Figure 1. Differential expression of DKK1 in SBC-5 and SBC-3 cells. (A) mRNA levels of DKK1 in human lung cancer cell lines. (B) Protein levels of DKK1 in human lung cancer cell lines.

37°C for 3 h. The solution was removed, and 150 μ l of DMSO was added to dissolve the formazine. Absorbance was detected at 490 nm with an ELISA plate reader (Thermo Forma MK3). This assay was performed three times.

Colony Formation Assay

A total of 200 cells/well were plated at equal density in a six-well plate. After incubation for 2 weeks, the cells were stained with 0.25% crystal violet, and the number of colonies was counted manually. Triplicate plates were set up for accuracy.

Conditioned Medium Collection and Use

SBC-5 cells (1×10^5) were seeded to a six-well plate. After 24 h of incubation, the medium was replaced with serum-free medium after being washed twice with $1 \times$ PBS. The conditioned medium (CM) was collected after another 24 h of incubation and stored at -80°C . In the follow-up study, the CM was added to the bottom chamber of the

culture plate at a ratio of 50%, and additional FBS was added to maintain the final concentration of 10%.

Cell Migration and Invasion Assay

Transwell invasion assays were performed in Transwell inserts (pore size, 8 μm thick) and 24-well companion plates (both from BD Corning). Inserts were coated with 70 μ l of Matrigel basement membrane matrix (diluted 1:8; BD Corning). Cells were seeded in triplicate into the upper chambers in RPMI-1640 without FBS. Medium (500 μ l) containing 10% FBS was added into the bottom chamber to serve as a chemoattractant. To test the specificity of DKK1, 10 $\mu\text{g}/\text{ml}$ of anti-human DKK1-neutralizing antibody (R&D Systems, Minneapolis, MN, USA) or 16 $\mu\text{g}/\text{ml}$ recombinant human DKK1 or the CM was collected before being added to the bottom chamber. After 24 h of incubation, cells that migrated through the inserts were fixed with 95% ethyl alcohol and then stained with 0.5% crystal violet. Invading cells on the bottom of the filters were imaged by microscopy (100 \times). However, only one step was different

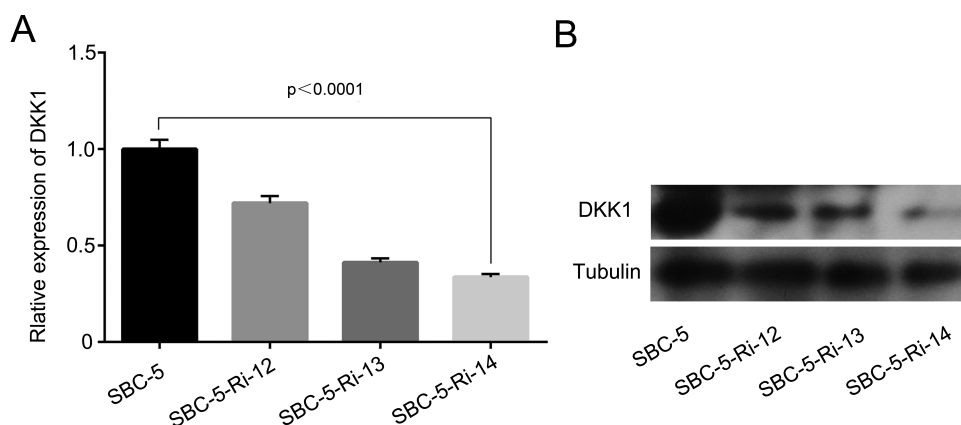


Figure 2. Expression of DKK1 in parental cells and transfected cells. (A) The mRNA level of DKK1 was measured by RT-PCR. (B) The protein expression was measured by Western blot.

between the migration assay and the invasion assay, which was that the inserts in the migration assay need not be coated with Matrigel basement membrane matrix.

Flow Cytometry Analysis

Cell apoptosis was determined by flow cytometry. The Annexin-V-FITC-PI kit (Key GEN, Nanjing, P.R. China) was used to detect the apoptosis rate. The cells were collected and washed with cool PBS twice and resuspended in 200 μ l of 1 \times binding buffer. Annexin V-FITC (10 μ l) and PI (5 μ l) were added, and the mixture was incubated at room temperature for 15 min in the dark. Finally, 300 μ l of binding buffer was added into the mixture, which was analyzed with FACSCalibur system (BD).

In Vivo Metastasis Experiment

All animal experiments were performed according to the Guidelines on Animal Experimentation formulated by the Fourth Military Medical University, Xi'an, P.R. China. Four-week-old female NOD-SCID mice (Beijing HFK Bioscience Co. Ltd., Beijing, P.R. China) were divided into two groups, and each group consisted of five mice. SBC-5 cells and SBC-5-Ri-DKK1 cells were harvested, and only a single cell suspension of >90% cell viability was used. Cells (1×10^6) in 200 μ l of PBS were injected into the mice via the tail vein. The mice were maintained under specific pathogen-free conditions. Five weeks later, the mice were anesthetized, and bone metastases were visualized by X-ray photographs. The number of osteolytic bone metastases

on the X-ray photographs was evaluated independently by two investigators (S.H.C. and T.M.Z.).

Statistical Analysis

One-way ANOVA was used to determine the significant difference in cell migration and invasion assay, and Wilcoxon rank sum test was used for metastasis analysis in vivo. The other data were performed by *t*-test. Statistical tests were performed using GraphPad Prism 6 (GraphPad Software Inc., San Diego, CA, USA). A value of $p < 0.05$ was considered statistically significant, and all statistical tests were performed two sided.

RESULTS

The Expression of DKK1 in SBC-5 Cells Was Higher Than That in SBC-3 Cells

We detected the DKK1 expression level in SBC-5 cell and SBC-3 cell by RT-PCR and Western blot analysis. We found that the expression level of DKK1 in SBC-5 cell and SBC-3 cell was significantly different. RT-PCR assay indicated that DKK1 was highly expressed in SBC-5 cell compared with SBC-3 cell ($p < 0.0001$) (Fig. 1A), and Western blot assay confirmed this result (Fig. 1B).

Expression of DKK1 in Transfected Cells Was Suppressed Successfully

We checked the transfection efficiency in SBC-5 cells by RT-PCR and Western blot. Both of the mRNA level

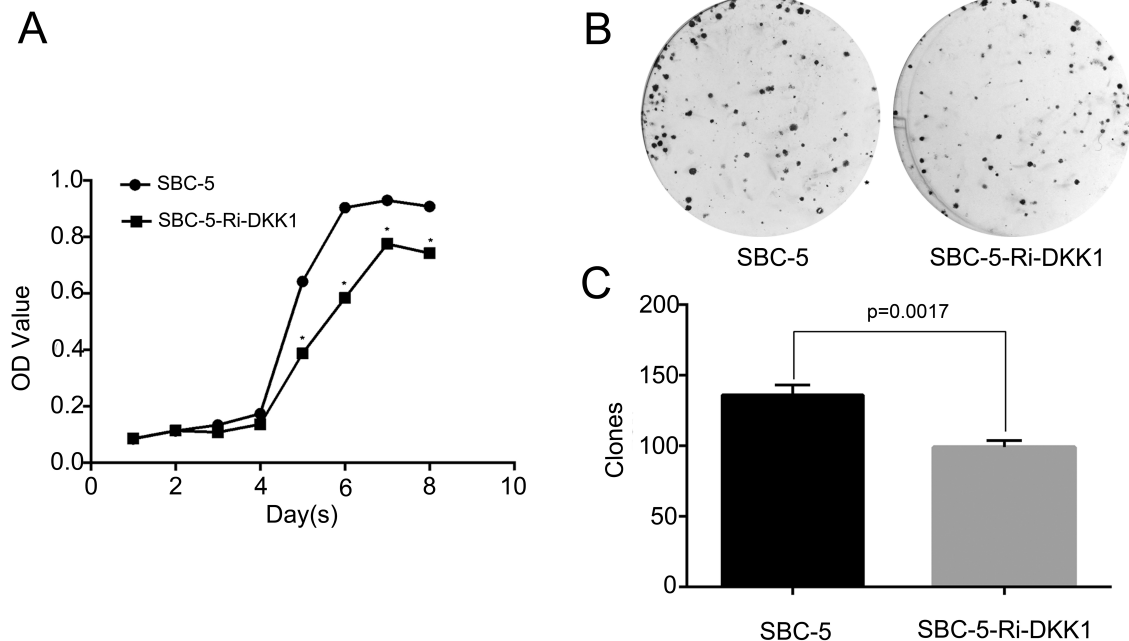


Figure 3. Effect of the downregulation of DKK1 by RNAi on the proliferation and colony formation in SBC-5 cells. (A) Cell proliferation was detected by MTT ($*p < 0.0001$) and (B) colony formation assay. (C) Statistical analysis of colony formation assay.

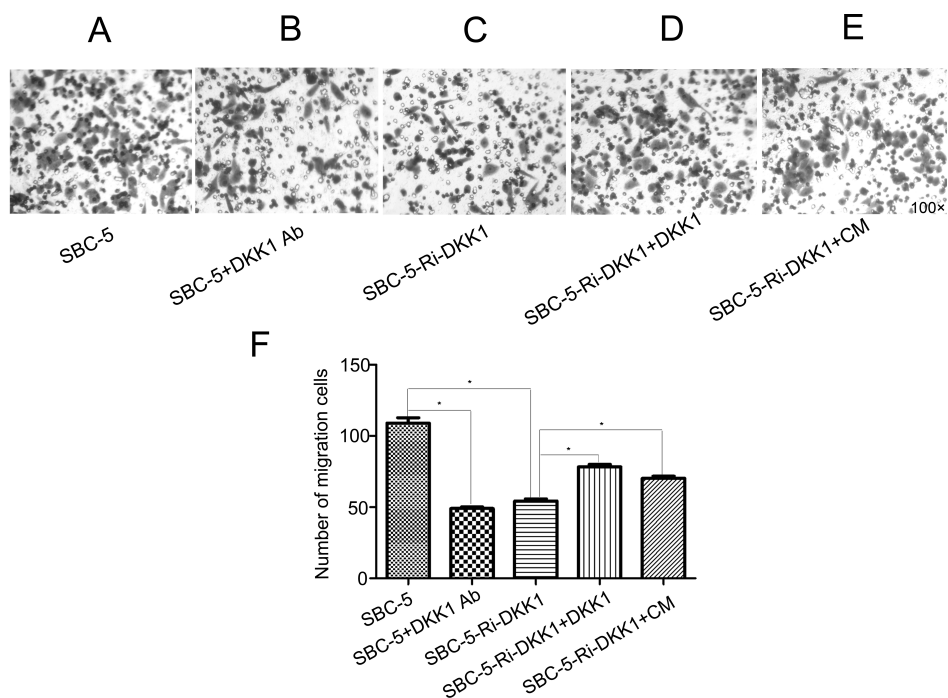


Figure 4. Microscope photos of migration: (A) migration of SBC-5 cells, (B) migration of SBC-5 cells with 10 μ g/ml of anti-human DKK1-neutralizing antibody, (C) migration of SBC-5-Ri-DKK1 cells, (D) migration of SBC-5-Ri-DKK1 cells with 16 ng/ml recombination human DKK1, and (E) migration of SBC-5-Ri-DKK1 cells with 50% conditioned medium (CM). (F) The statistical results of cell migration. Bars represent mean \pm SD. * $p < 0.0001$.

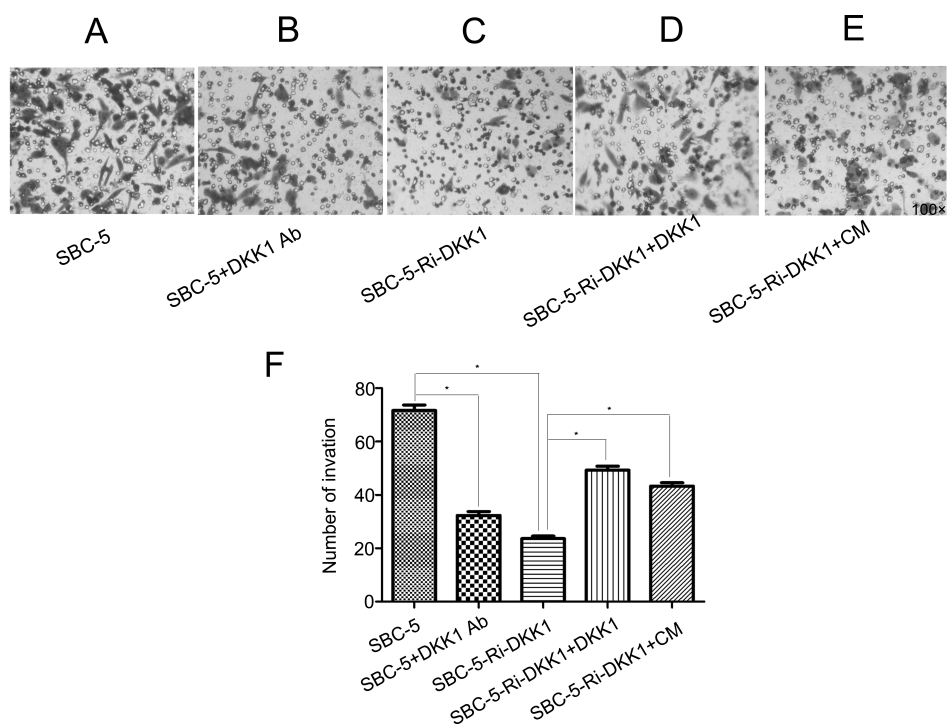


Figure 5. Microscope photos of invasion: (A) invasion of SBC-5 cells, (B) invasion of SBC-5 cells with 10 μ g/ml of anti-human DKK1-neutralizing antibody, (C) invasion of SBC-5-Ri-DKK1 cells, (D) invasion of SBC-5-Ri-DKK1 cells with 16 ng/ml recombination human DKK1, and (E) invasion of SBC-5-Ri-DKK1 cells with 50% conditioned medium (CM). (F) Statistical results of cell invasion. Bars represent mean \pm SD. * $p < 0.0001$.

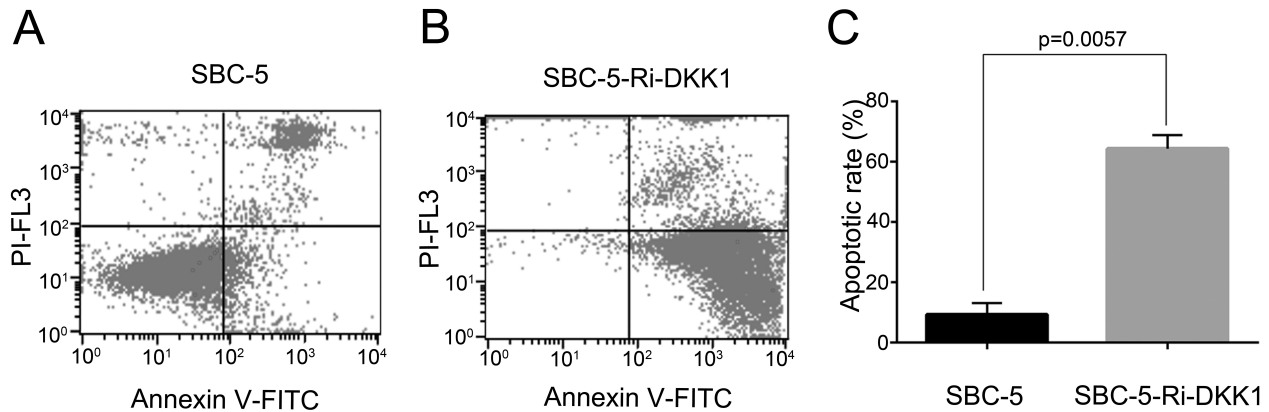


Figure 6. Cell apoptosis was analyzed by FACS analysis. (A) Representative image of cell apoptotic rate of SBC-5 cells and (B) SBC-5-Ri-DKK1 cells. (C) The statistical analysis of apoptosis rate in SBC-5 cells and SBC-5-Ri-DKK1 cells, presented as mean \pm SD ($p=0.0057$).

and protein level of DKK1 in SBC-5 cells were stably decreased by shRNA (Fig. 2A and B). Among these shRNAs targeting to three different sites, Ri-DKK1-14 was the most effective one, so we named it SBC-5-Ri-DKK1 for the following tests.

Cell Proliferation

Next, the effect of decreased DKK1 expression on cell proliferation in SBC-5 cells was analyzed by MTT and colony formation assay. As shown in the cell proliferation curve, the down expression of DKK1 could inhibit the proliferation ability of SBC-5 cells ($p<0.0001$) (Fig. 3A). Consistently, from the colony formation assay, we observed that the number of colonies formed by SBC-5-Ri-DKK1 cells was significantly less than that by the parental SBC-5 cells ($p=0.0017$) (Fig. 3C), and the colony size was also much smaller in the former group (Fig. 3B). These results implied that DKK1 played a role in the proliferation of SBC-5 cells.

Reduced Expression of DKK1 Inhibits the Migration and Invasion in SBC-5 Cells

Through preliminary experiments, we found that the addition of a DKK1-neutralizing antibody and down-regulation of DKK1 expression could dramatically suppress cell migration and invasion, while the recombinant DKK1 and CM of SBC-5 cells could reverse the effect of DKK1 RNAi ($p<0.0001$). These results suggested that DKK1 was closely related to the capability of invasion and migration in SBC-5 cells (Figs. 4 and 5).

Downregulation of DKK1 Improves the Apoptosis of SBC-5 Cells

The cell apoptosis analysis showed that the apoptosis rates of SBC-5-Ri-DKK1 cells and SBC-5 cells were $64.34 \pm 3.193\%$ and $9.350 \pm 2.680\%$, respectively ($p=0.0057$) (Fig. 6), indicating that the downregulation of DKK1 could promote the apoptosis of SBC-5 cells.

Downregulation of DKK1 Inhibited the Bone Metastasis In Vivo

Last, we investigated the role that DKK1 played in vivo. Five weeks after inoculation of cancer cells, paralysis (probably caused by spinal cord compression and bone metastases in hindlimbs) occurred in one of five mice in the SBC-5-Ri-DKK1 group and in four of five mice in the SBC-5 group. Bone metastasis was found in two of five mice in the SBC-5-Ri-DKK1 group and in five of five mice in the SBC-5 group (Table 3). The total number of bone metastasis lesions that developed in the mice was also calculated, which is shown in Table 3. The results revealed that the downregulation of DKK1 could significantly inhibit specific metastasis to the bone. The image of bone metastasis lesions is shown in Figure 7.

DISCUSSION

The DKK family consists primarily of four subtypes of secreted protein in vertebrates (DKK1 to DKK4). Among this family, more research has focused on the DKK1 protein, which was discovered due to its ability to block Wnt signaling required for head induction during early *Xenopus* embryogenesis¹⁰. DKK1 is a downstream target of the Wnt/ β -catenin signaling pathway, and activation of canonical Wnt signaling leads to an increase in transcription and translation levels of DKK1. Several studies stated

Table 3. Metastasis Lesions Formed in NOD-SCID Mice After Inoculation of SBC-5 and SBC-5-RI-DKK1 Cells for 5 Weeks

Cell	Incidence	No. of Bone Metastasis
SBC-5	5/5	5 (4–6)
SBC-5-Ri-DKK1	2/5	0 (0–3)*

The metastasis incidence in mice and the number of metastasis lesions in bone 5 weeks after inoculation of two groups of cells. Values are presented as median (range). * $p=0.008$ compared with the control group (Wilcoxon rank sum test).

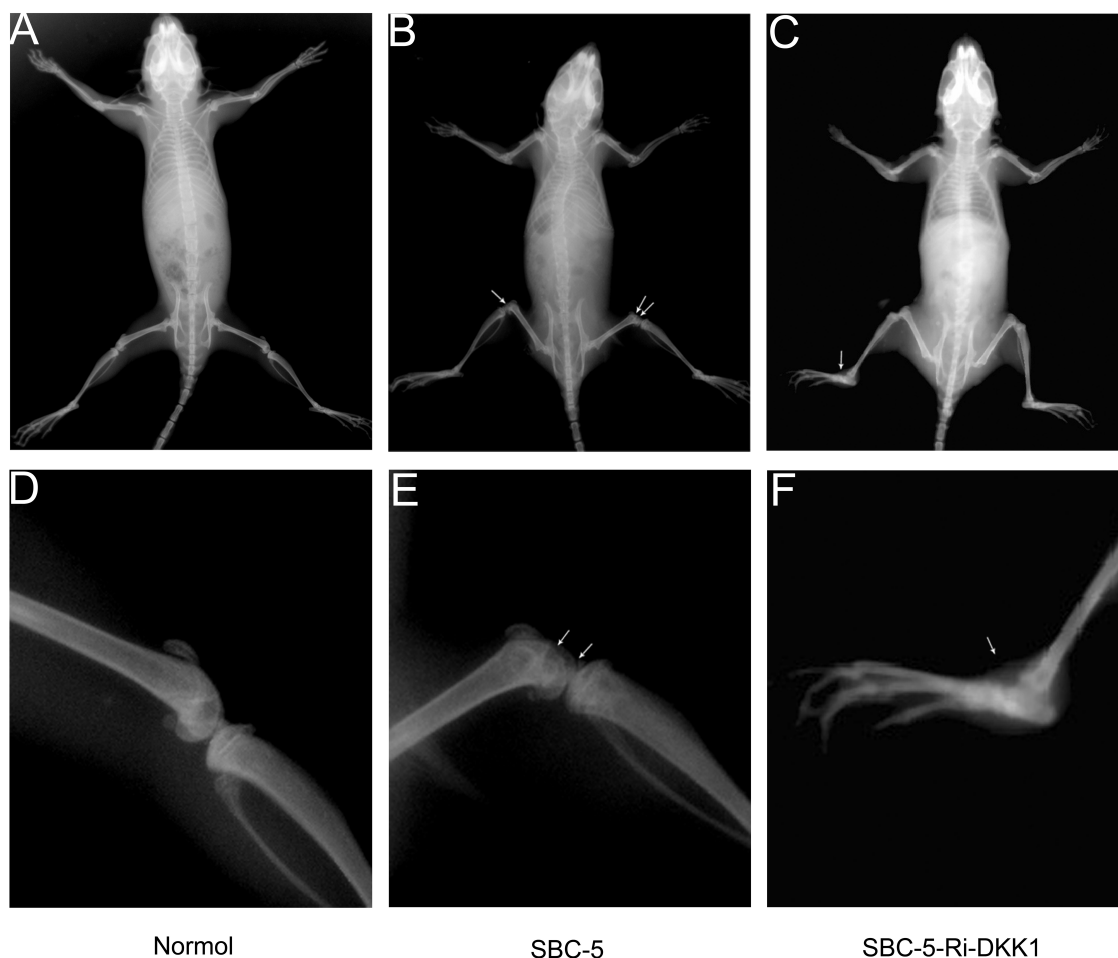


Figure 7. The X-ray photographs of osteolytic bone metastases formed after inoculation of cancer cells for 5 weeks. (A, D) Bone image in normal mice. Images of bone metastasis lesions in (B, E) the SBC-5 group and (C, F) the SBC-5-Ri-DKK1 group.

that DKK1 is involved in the progression of cancer and predicted a poor prognosis. However, the role DKK1 played in cancer appears to be diverse. Serum concentration of DKK1 was decreased obviously in patients with colorectal cancer, gastric cancer, cervical adenocarcinoma, and ovarian cancer compared with healthy people^{11,12}. Unlike samples from the patients mentioned above, patients with lung cancer¹¹, multiple myeloma¹³, PC¹⁴, esophageal carcinomas¹⁵, hepatoblastoma, Wilms' tumors^{16,17}, and breast cancer⁶ showed a higher DKK1 concentration. These contradictory observations may be caused by the differences in tumor type, tumor stage, tissue origin (epithelial or mesenchymal), and cellular subtypes.

In our study, we confirmed that the expression level of DKK1 was much higher in SBC-5 cells with bone metastatic ability than the level in SBC-3 cells without bone metastatic ability. DKK1 may be an important factor in bone metastasis of SCLC. So we established a DKK1-RNAi-stable transfected cell line and found that downregulation of DKK1 expression could attenuate

the cell proliferation, colony formation, cell migration, and invasion, but promote apoptosis. However, DKK1 did not change the cell cycle progression of SBC-5 cells in vitro (data not shown), suggesting that DKK1 accelerated the apoptosis through other pathways, but not the cell cycle, which needs further investigation. In vivo, downregulating DKK1 in SBC-5 cells could reduce the number and size of bone metastasis formed in NOD/SCID mice. These results indicated that DKK1 played an important role in the biological behavior of SCLC cells, which may be a potential mechanistic link between SCLC and bone metastases. Therefore, targeting DKK1 may be an effective method to prevent and treat skeleton metastases of SCLC.

The serum from patients with high DKK1 levels could inhibit osteoblast differentiation and OPG expression in vitro¹⁸. In myeloma, DKK1 plays a positive role in the development of osteolytic lesions^{16,19}. DKK1 inhibits osteoblast differentiation and high circulating level of DKK1 in patients with multiple myeloma and is correlated with

osteolytic lesions^{20,21}. New research reports that DKK1 promotes PC elongation and filopodia formation, morphological changes characteristic of an invasive phenotype to bone²². Other studies have found that DKK1 was highly expressed in breast cancer cell lines, which preferentially metastasize to the bone and serum of breast cancer patients with osteolytic bone metastases^{23,24}. However, further understanding of the mechanistic role that DKK1 plays in primary small lung cancer as well as its secondary osteolytic bone metastases should be facilitated. We need many more studies to reveal the exact mechanisms behind these effects of DKK1 on tumor cell growth, apoptosis, migration, invasion, and bone metastasis.

ACKNOWLEDGMENTS: *This study was supported by the National Natural Science Foundation of China (Nos. 81172011, 81572814, and 81272345) and the Natural Science Foundation of Shanxi, China (No. 2016JM8036). The authors declare no conflicts of interest.*

REFERENCES

1. Ferlay J, Soerjomataram I, Dikshit R, Eser S, Mathers C, Rebelo M, Parkin DM, Forman D, Bray F. Cancer incidence and mortality worldwide: Sources, methods and major patterns in GLOBOCAN 2012. *Int J Cancer* 2015; 136:E359–86.
2. Oster G, Lamerato L, Glass AG, Richert-Boe KE, Lopez A, Chung K, Richhariya A, Dodge T, Wolff GG, Balakumaran A, Edelsberg J. Natural history of skeletal-related events in patients with breast, lung, or prostate cancer and metastases to bone: A 15-year study in two large US health systems. *Support Care Cancer* 2013;21:3279–86.
3. Silva SC, Wilson C, Woll PJ. Bone-targeted agents in the treatment of lung cancer. *Ther Adv Med Oncol*. 2015;7: 219–28.
4. Roato I. Bone metastases: When and how lung cancer interacts with bone. *World J Clin Oncol*. 2014;5:149–55.
5. Menezes ME, Devine DJ, Shevde LA, Samant RS. Dickkopf1: A tumor suppressor or metastasis promoter? *Int J Cancer* 2012;130:1477–83.
6. Bu G, Lu W, Liu CC, Selander K, Yoneda T, Hall C, Keller ET, Li Y. Breast cancer-derived Dickkopf1 inhibits osteoblast differentiation and osteoprotegerin expression: Implication for breast cancer osteolytic bone metastases. *Int J Cancer* 2008;123:1034–42.
7. Hall CL, Daignault SD, Shah RB, Pienta KJ, Keller ET. Dickkopf-1 expression increases early in prostate cancer development and decreases during progression from primary tumor to metastasis. *Prostate* 2008;68:1396–404.
8. Thudi NK, Martin CK, Murahari S, Shu ST, Lanigan LG, Werbeck JL, Keller ET, McCauley LK, Pinzone JJ, Rosol TJ. Dickkopf-1 (DKK-1) stimulated prostate cancer growth and metastasis and inhibited bone formation in osteoblastic bone metastases. *Prostate* 2011;71:615–25.
9. Chu T, Teng J, Jiang L, Zhong H, Han B. Lung cancer-derived Dickkopf1 is associated with bone metastasis and the mechanism involves the inhibition of osteoblast differentiation. *Biochem Biophys Res Commun*. 2014;443:962–8.
10. Glinka A, Wu W, Delius H, Monaghan AP, Blumenstock C, Niehrs C. Dickkopf-1 is a member of a new family of secreted proteins and functions in head induction. *Nature* 1998;391:357–62.
11. Sheng SL, Huang G, Yu B, Qin WX. Clinical significance and prognostic value of serum Dickkopf-1 concentrations in patients with lung cancer. *Clin Chem*. 2009;55:1656–64.
12. Sato H, Suzuki H, Toyota M, Nojima M, Maruyama R, Sasaki S, Takagi H, Sogabe Y, Sasaki Y, Idogawa M, Sonoda T, Mori M, Imai K, Tokino T, Shinomura Y. Frequent epigenetic inactivation of DICKKOPF family genes in human gastrointestinal tumors. *Carcinogenesis* 2007;28:2459–66.
13. Xu Y, Chen B, George SK, Liu B. Downregulation of MicroRNA-152 contributes to high expression of DKK1 in multiple myeloma. *RNA Biol*. 2015;12:1314–22.
14. Hall CL, Daignault SD, Shah RB, Pienta KJ, Keller ET. Dickkopf-1 expression increases early in prostate cancer development and decreases during progression from primary tumor to metastasis. *Prostate* 2008;68:1396–404.
15. Yamabuki T, Takano A, Hayama S, Ishikawa N, Kato T, Miyamoto M, Ito T, Ito H, Miyagi Y, Nakayama H, Fujita M, Hosokawa M, Tsuchiya E, Kohno N, Kondo S, Nakamura Y, Daigo Y. Dickkopf-1 as a novel serologic and prognostic biomarker for lung and esophageal carcinomas. *Cancer Res*. 2007;67:2517–25.
16. Tian E, Zhan F, Walker R, Rasmussen E, Ma Y, Barlogie B, Shaughnessy JJ. The role of the Wnt-signaling antagonist DKK1 in the development of osteolytic lesions in multiple myeloma. *N Engl J Med*. 2003;349:2483–94.
17. Wirths O, Waha A, Weggen S, Schirmacher P, Kuhne T, Goodyer CG, Albrecht S, Von Schweinitz D, Pietsch T. Overexpression of human Dickkopf-1, an antagonist of wingless/WNT signaling, in human hepatoblastomas and Wilms' tumors. *Lab Invest*. 2003;83:429–34.
18. Brunetti G, Papadia F, Tummolo A, Fischetto R, Nicastro F, Piacente L, Ventura A, Mori G, Oranger A, Gigante I, Colucci S, Ciccarelli M, Grano M, Cavallo L, Delvecchio M, Faienza MF. Impaired bone remodeling in children with osteogenesis imperfecta treated and untreated with bisphosphonates: The role of DKK1, RANKL, and TNF-alpha. *Osteoporos Int*. 2016;27:2355–65.
19. Politou MC, Heath DJ, Rahemtulla A, Szydlo R, Anagnostopoulos A, Dimopoulos MA, Croucher PI, Terpos E. Serum concentrations of Dickkopf-1 protein are increased in patients with multiple myeloma and reduced after autologous stem cell transplantation. *Int J Cancer* 2006;119:1728–31.
20. Pinzone JJ, Hall BM, Thudi NK, Vonau M, Qiang YW, Rosol TJ, Shaughnessy JJ. The role of Dickkopf-1 in bone development, homeostasis, and disease. *Blood* 2009; 113:517–25.
21. Giuliani N, Rizzoli V. Myeloma cells and bone marrow osteoblast interactions: Role in the development of osteolytic lesions in multiple myeloma. *Leuk Lymphoma* 2007;48:2323–9.
22. Hudson BD, Hum NR, Thomas CB, Kohlgruber A, Sebastian A, Collette NM, Coleman MA, Christiansen BA, Loots GG. SOST inhibits prostate cancer invasion. *PLoS One* 2015;10:e142058.
23. Voorzanger-Rousselot N, Goehrig D, Journe F, Doriath V, Body JJ, Clezardin P, Garnero P. Increased Dickkopf-1 expression in breast cancer bone metastases. *Br J Cancer* 2007;97:964–70.
24. Mariz K, Ingolf JB, Daniel H, Teresa NJ, Erich-Franz S. The Wnt inhibitor dickkopf-1: A link between breast cancer and bone metastases. *Clin Exp Metastasis* 2015;32:857–66.