

Case Control Study

Increased colon transit time and faecal load in irritable bowel syndrome

Dennis Raahave, Andreas K Jensen

ORCID number: Dennis Raahave 0000-0003-3845-9047; Andreas K Jensen 0000-0002-8233-9176.

Author contributions: Raahave D and Jensen AK designed and performed the study and wrote and approved the manuscript.

Institutional review board statement: The study was reviewed and approved by the Scientific Committee, Department of Gastroenterology and Surgery, Copenhagen University North Sealand Hospital Institutional Review Board.

Informed consent statement: All patients and control persons provided informed written consent prior to study enrollment.

Conflict-of-interest statement: The authors declare no conflict of interest.

Data sharing statement: No additional data are available.

STROBE statement: The authors have read the STROBE Statement-checklist of items, and the manuscript was prepared and revised according to the STROBE Statement-checklist of items.

Open-Access: This article is an open-access article that was

Dennis Raahave, Department of Gastroenterology and Surgery, Copenhagen University North Sealand Hospital, Hilleroed 3400, Denmark

Andreas K Jensen, Faculty of Health Sciences, Section of Biostatistics, University of Copenhagen, Hilleroed 3400, Denmark

Corresponding author: Dennis Raahave, DSc, MD, PhD, Consultant Physician-Scientist, Senior Researcher, Department of Gastroenterology and Surgery, Copenhagen University North Sealand Hospital, Dyrehavevej 29, Hilleroed 3400, Denmark. dr.dr@dadlnet.dk

Abstract

BACKGROUND

Irritable bowel syndrome (IBS) is a bowel disorder involving abdominal pain or discomfort along with irregularity of stool form and passage frequency. The pathophysiology is poorly understood and seems to be multifactorial. Investigations of possible causes of IBS have included only a few colonic transit studies and no simultaneous determination of the colonic faecal content.

AIM

To compare colon transit time and faecal load between IBS-patients and healthy control subjects.

METHODS

The study included 140 patients with IBS, with a mean age of 50.0 years. The control group comprised 44 healthy persons with a mean age of 43.4 years, who were selected at random from the National Civil Register. Both the patient group and the control group underwent a marker study to measure colon transit time (CTT) and to calculate a faecal loading score. The patient group underwent treatment with a combined prokinetic regime, after which their CTT and faecal loading were reassessed. Analyses were performed to compare measurements between the control group and the patient group before and after treatment.

RESULTS

Compared to healthy controls, IBS-patients exhibited a significantly prolonged mean CTT (45.48 h vs 24.75 h, $P = 0.0002$) and significantly greater mean faecal loading scores in all colonic segments ($P < 0.001$). Among IBS patients, we found no significant differences between the 48 h and 96 h radiographs. Among patients exhibiting increased CTT and faecal loading, approximately half exhibited a

selected by an in-house editor and fully peer-reviewed by external reviewers. It is distributed in accordance with the Creative Commons Attribution NonCommercial (CC BY-NC 4.0) license, which permits others to distribute, remix, adapt, build upon this work non-commercially, and license their derivative works on different terms, provided the original work is properly cited and the use is non-commercial. See: <http://creativecommons.org/licenses/by-nc/4.0/>

Manuscript source: Unsolicited manuscript

Specialty type: Gastroenterology and hepatology

Country/Territory of origin: Denmark

Peer-review report's scientific quality classification

Grade A (Excellent): 0
Grade B (Very good): 0
Grade C (Good): C, C
Grade D (Fair): 0
Grade E (Poor): 0

Received: October 20, 2020

Peer-review started: October 20, 2020

First decision: October 27, 2020

Revised: November 26, 2020

Accepted: December 4, 2020

Article in press: December 4, 2020

Published online: January 5, 2021

P-Reviewer: Bouchoucha M

S-Editor: Gao CC

L-Editor: Filipodia

P-Editor: Wu YXJ



palpable mass in the right iliac fossa. After intervention with a prokinetic treatment, the mean CTT among IBS patients was reduced from 45.48 h to 34.50 h ($P = 0.091$), with the post-treatment CTT not significantly differing from the CTT among control subjects ($P = 0.095$). The faecal loading score among IBS patients did not significantly differ before and after treatment ($P = 0.442$). The post-treatment faecal loading score in IBS patients remained significantly higher compared to that in controls (5.3 vs 4.3, $P = 0.014$). After treatment, half of the IBS-patients were relieved of bloating, while the majority no longer experienced abdominal pain and achieved a daily consistent stool.

CONCLUSION

IBS-patients exhibited prolonged CTT and heavier faecal loading. These assessments may aid in diagnosis. Faecal retention may contribute to IBS symptoms, which can be treated using a prokinetic regime.

Key Words: Irritable bowel syndrome; Functional bowel disease; Faecal retention; Colon transit time; Faecal load

©The Author(s) 2021. Published by Baishideng Publishing Group Inc. All rights reserved.

Core Tip: Patients with irritable bowel syndrome (IBS) exhibit a significant prolonged colon transit time (CTT) and greater faecal loading compared to healthy people. This finding adds to our understanding of IBS since faecal retention may lead to major symptoms like abdominal bloating and pain and defaecation disturbances. The targeted therapy was a prokinetic regime. All the more, CTT/faecal load may serve as a diagnostic procedure.

Citation: Raahave D, Jensen AK. Increased colon transit time and faecal load in irritable bowel syndrome. *World J Gastrointest Pharmacol Ther* 2021; 12(1): 13-20

URL: <https://www.wjgnet.com/2150-5349/full/v12/i1/13.htm>

DOI: <https://dx.doi.org/10.4292/wjgpt.v12.i1.13>

INTRODUCTION

Irritable bowel syndrome (IBS) is a bowel disorder involving abdominal pain or discomfort along with irregularity of stool form and passage frequency^[1]. Its prevalence ranges from 9%-23% of the world population^[2]. IBS considerably affects quality of life and imposes a profound burden on patients, physicians, and the health-care system^[3,4]. The pathophysiology is poorly understood and seems to be multifactorial. Investigations for possible causes of IBS have included only a few colonic transit studies^[5,6], and none have included a simultaneous determination of the colonic faecal content. Therefore, in the present study we aimed to measure colon transit time and faecal load in patients with IBS and to compare these measures with those of a healthy control group.

MATERIALS AND METHODS

This study included 140 patients diagnosed with IBS based on recurrent abdominal pain and abdominal discomfort during the last 3 mo, which was associated with two or more of the following: Improvement with defecation, change in frequency of stool, and change in form (appearance) of stool^[7]. The patients were recruited from a database of 281 patients who were referred for abdominal and ano-rectal symptoms^[8]. A control group was recruited from a random selection of 372 people over 18 years of age, from the National Civil Register. Screening excluded individuals with gastrointestinal symptoms who took laxatives or strong analgesics and who had previous abdominal surgery. A total of 44 people fulfilled these criteria and were included in the control group. This study was approved by a local ethical and research

committee and was conducted in accordance with the Declaration of Helsinki.

Included patients underwent a physical examination with special attention to abdominal signs, as well as a colonic marker study. The patients were on their own diet, and each patient swallowed a capsule containing 24 radiopaque markers (Sitzmark, Konsyl, Pharmaceutical Inc., Fort Worth, TX, United States), and then abdominal X-rays were taken after 48 h and 96 h^[9]. Abdominal X-rays were divided into three segments, in a reverse Y-design, formed by the vertical column and two imaginary lines extending from the fifth lumbar vertebra to the right and left pelvic brim, pointing towards the femoral head, which was a modification from earlier studies^[10,11]. The three segments include the right, transverse, and left colon and the rectum (Figure 1). The number of markers was counted in each segment and colonic transit time (CTT) was calculated using the following equation: CTT (in hours) = $(48/n) \times (n_{48} + n_{96})$, where n_{48} and n_{96} are the total number of markers observed at 48 h and 96 h after ingestion of $n = 24$ markers^[12]. The control subjects also ingested 24 markers at the same time for 6 d, followed by an abdominal X-ray on day 7. In the control subjects, the number of markers visible on X-ray was then equal to the CTT in hours^[12] (Figure 2).

The estimated faecal load in the colon from each segment on the X-ray was scored from 0-3, where 0 indicated no faeces visible, 1 indicated slight, 2 moderate, and 3 severe faecal loading. We then obtained a segmental score of 0-3 and a total score of 0-9 for each radiograph. Similarly, faecal loading scores were estimated for the controls. The presently used score is a modification of the Leech-score, which details faecal loading from 0-5^[13]. The X-ray images were examined by observers who were unaware of the patients' clinical course.

Intervention

The present study was designed to investigate the pathogenic mechanisms of IBS rather than a therapeutic trial. Thus, the patients received an established bowel stimulatory treatment, which included a low fat and fibre-rich diet and dietician-guided meal planning, in accordance with guidelines of the Danish Nutritional Council. The diet was supplemented with 10-20 g of ispaghula husk per day, and the prokinetic drug, domperidone, 10 mg \times 3 a day. Patients were also encouraged to perform 30 min of physical activity on a daily basis. This treatment continued until patients reported relief of symptoms. At this time, CTT and faecal loading were reassessed.

Statistical analysis

The data were entered into a database, and analyses were performed using R 4.0.1 (R Core Team). Patients' characteristics were expressed using frequency, percentage, mean, range, and standard deviation (SD). Differences (*e.g.*, between the sexes) were calculated using a t-test and a permutations test for independence. The permutation test was also used to calculate differences between CTT values and between faecal loading scores. This test was selected because the variables did not show a normal distribution. Finally, we investigated possible associations of CTT and faecal load with specific symptoms and physical signs. A P of < 0.05 was considered to indicate statistical significance.

RESULTS

Among 140 patients, the mean age was 50.0 years (range 17.0-81.2 years), and 118 patients were female and 22 were male. Mean age did not significantly differ between sexes, 49.6 years *vs* 52.3 years, $P = 0.448$. The control group included 44 randomly selected healthy persons with mean age of 43.4 years (range 21.0-67.0 years) and included equal numbers of males and females.

The marker study revealed a mean CTT of 45.48 h among the 140 patients, compared to 24.75 h in the 44 controls, ($P = 0.0002$). CTT did not significantly differ between male and female patients (41.22 h *vs* 38.63 h, $P = 0.741$) or between male and female controls (19.73 h *vs* 29.77 h, $P = 0.111$). Patients and controls exhibited significant differences in mean faecal loading scores in all colonic segments at 48 h (right: 2.25 *vs* 1.80, left: 1.95 *vs* 1.25, distal: 1.95 *vs* 1.27; all $P < 0.001$) and at 96 h (right: 2.41 *vs* 1.80, left: 2.05 *vs* 1.25, distal: 2.05 *vs* 1.27; all $P < 0.001$). Mean loading scores did not significantly differ between the 48 h and 96 h radiographs. Total mean faecal loading scores significantly differed between women and men among patients (5.77 *vs* 6.40, $P = 0.025$) but not among controls (4.55 *vs* 4.09, $P = 0.179$).

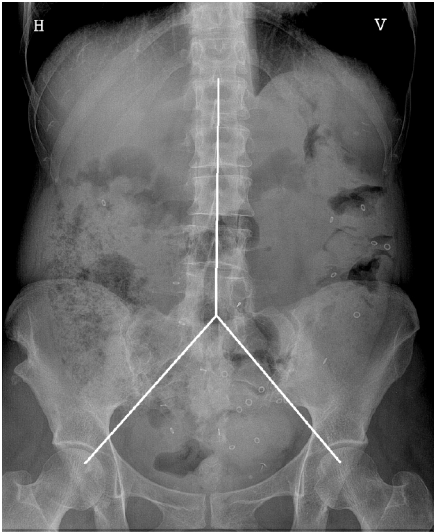


Figure 1 Colon transit study in an irritable bowel syndrome patient. Patient ingested 24 markers, and an X-ray was acquired at 48 h. From the X-ray, we counted the number of markers in each segment: $2 + 8 + 10 = 20$; faecal load score: $2 + 2 + 1 = 5$ (see text).



Figure 2 Colon transit study in a healthy control. Subjects ingested the 24 markers for 6 d, and an X-ray was acquired on day 7. From the X-ray we counted the number of markers in each segment: $11 + 6 + 1 = 18$; faecal load score: $2 + 1 + 1 = 4$ (see text).

We used linear regression model to examine associations between markers and faecal load. Data from patients' radiographs at 48 h and 96 h revealed significant associations between markers and faecal load ($P < 0.001$). These parameters showed the same relationship patterns among controls.

The mean intervention treatment period was 690 d. The mean CTT among patients was reduced from 45.48 h pre-intervention to 34.50 h post-intervention ($P = 0.091$). The mean CTT did not significantly differ between treated patients and healthy controls ($P = 0.095$). On the other hand, we found no significant difference between pre-treatment and post-treatment values of total faecal loading score 48 h ($P = 0.442$) or at 96 h ($P = 0.127$). Compared to healthy controls, post-treatment patients showed significantly heavier total faecal loading at both 48 h (5.3 vs 4.3, $P = 0.014$) and 96 h.

Of the 140 patients, 58 (41.4%) exhibited a palpable faecal mass in the right fossa. Among the 57 patients with an elevated CTT of > 24.75 h (mean among healthy controls), 28 patients (49.1%) had a palpable mass. Similarly, of the 102 patients with a 48 h faecal loading score of > 1.80 (mean among healthy controls), 47 (46.1%) exhibited a palpable mass. Additionally, among 56 patients with an increase in CTT of > 24.75 h, 37 (66.1%) exhibited meteorism ($P < 0.001$).

After the intervention, 43.9% of the patients were relieved from bloating ($P = 0.1083$), and 60.9% of patients no longer experienced abdominal pain ($P = 0.0193$). With regards to defaecation after the intervention, 88.6% of patients achieved normal daily defaecation ($P < 0.001$), and 74.3% had a formed stool ($P < 0.001$).

DISCUSSION

To our knowledge, our present study was the first to report the CTT and faecal load in IBS-patients. Our results showed that IBS patients had a prolonged CTT and heavier faecal load in all parts of the colon compared to healthy controls. Prior measurements of the degree of faecal loading have been exclusively described in children, and several systems have been developed to score both the amount of faeces and its localization in different colon segments^[14,15]. The Leech-score is a reproducible tool for assessing faecal loading, with high intra-observer and interobserver agreement^[13,16-18]. The plain abdominal radiograph has seldom been used in adults^[18,19].

In contrast, CTT is widely used as a reproducible method^[9]. In particular, CTT is utilized to assess for the presence of slow transit constipation. In our present study of IBS-patients, we utilized a single ingestion of markers to ensure better compliance, and the markers were counted on radiographs acquired at 48 h and 96 h after ingestion. We counted the localized markers in the right, left, and distal parts of the colon, including the rectum. This method was used regardless of bowel outlines that may suggest some other placement of a part of the colon. In the control subjects, we utilized multiple marker ingestion at the same time for 6 consecutive days followed by an abdominal X-ray on day 7, to circumvent the difficulty and unnecessary radiation exposure involved in obtaining two radiographs. With this technique, we measured the mean value of the mean transit times of different boluses of ingested markers, and the numbers of markers visible on the radiograph was equal to the segmental total transit time in hours^[12]. This method is analogous to a bolus ingestion of markers visible on successive daily abdominal X-rays, and the two techniques were significantly correlated^[9].

CTT has seldom been measured in IBS patients. After eliminating many patients with IBS constipation, Bouchoucha *et al*^[20] found that CTT values in IBS patients significantly differed between male patients (25.7 h; $n = 194$) and female patients (31.1 h; $n = 558$). Other reports have also shown sex-based differences in CTT among both IBS-patients and control subjects^[21]. However, in our study CTT of patients and controls was not associated with gender. Among healthy adults, CTT reportedly varies between 24.5 h and 45.6 h^[20,22-24], and thus it is rather difficult to define a normal CTT. Variations in CTT can be attributed to the population investigated, dietary and fluid intake, physical activity, and study methodology. Notably, the CTT measurements obtained in sitz- or plastic marker studies of patients and controls have decreased over many years. Thus, our present CTT measurements for both IBS-patients and controls are at the lower end compared to prior studies.

Radiopaque markers are not absorbed, do not alter gut metabolism, and have the same specific gravity as gut content and can thus be assumed to travel at the same rate as faeces. Markers are proven to be significantly associated with faecal load. Despite this, we observed great variation. Thus, patients with a heavy load may have few markers, and patients with a high load may have many markers. Additionally, the faecal load determined at 96 h was the same as at 48 h, indicating a stationary condition. A significant difference in faecal load was found between female and male IBS-patients, which was not the case for controls.

The pathophysiology of IBS is poorly understood and appears to be multifactorial, involving the combined impact of food intake, physical activity, mental status, previous infections, and genetics^[25]. Recent years have brought emerging insights into the nervous system, and nervous system dysfunction may play a role in IBS^[26]. Our increasing understanding of the gut microbiome has also highlighted its potential role in IBS symptoms^[27]. In this context, faeces in the colon, and thereby the faecal load, may be viewed as the end result of all of these factors. Here, we found that faecal load was heavier in IBS patients than in healthy persons, and thus appears to be important in IBS. All the more, a palpable faecal mass in the right iliac fossa was found in many patients. The retention was observed irrespective of defaecation patterns (*i.e.*, diarrhoea or constipation) and represents a hidden constipation.

Nearly half of the IBS patients in our study exhibited a palpable faecal mass in the right fossa, which was associated with both increased CTT and heavier faecal load. Moreover, a high proportion of IBS patients with an increased CTT suffered from meteorism. The endogenous source of intestinal gas is the fermentation processes of yeast and bacteria, which produces hydrogen, carbon dioxide, methane, butyric acid, and odoriferous sulphur compounds^[28]. In particular, colonic hydrogen production is greater in patients with IBS than controls^[29]. Thus, patients' symptoms of bloating and abdominal pain may be caused by gas distending the colonic wall. This is in agreement with a study showing greater abdominal distension in IBS patients with delayed transit than in those with normal transit^[30]. Our present results are consistent

with that finding.

The simultaneous determination of CTT and faecal loading may serve as a diagnostic tool for IBS, rather than diagnosing this condition based on a constellation of symptoms alone.

The present study was not a therapeutic trial but rather an investigative study of the mechanisms of IBS. Various IBS treatment concepts have been suggested^[31]. Our patients exhibited faecal retention, and the administered treatment was targeted to relieve faecal retention with a dietary and prokinetic regime, including physical activity. Domperidone blocks the inhibitory effect of dopamine in the proximal colon in dogs^[32] and thereby facilitates movements. In a placebo-controlled study, domperidone resulted in significantly reduced abdominal pain, flatulence, and abnormal bowel habits^[33]. After the intervention, the patients exhibited reduced CTT values that were very close to the CTT values of healthy controls. However, the patients did not exhibit a corresponding reduction of faecal loading, which remained heavier than in the controls. These findings are in good agreement with the fact that only half of our patients experienced relief from bloating after the intervention. Fortunately, the majority of the patients no longer experienced abdominal pain and achieved daily and formed defaecation. It is possible that a treatment including prucalopride may constitute a more effective prokinetic regime for accelerating transit^[34].

CONCLUSION

Our present results showed a significantly prolonged CTT and significantly heavier faecal loading in IBS-patients compared to healthy controls. This suggests that faecal retention may contribute to the symptoms in IBS, which could thus be relieved by treatment with a prokinetic regime. Our findings also indicate that the simultaneous determination of CTT and faecal loading may serve as a diagnostic procedure for IBS.

ARTICLE HIGHLIGHTS

Research background

Patients with irritable bowel syndrome (IBS) experience abdominal pain and irregularities of stool form and passage frequency. The prevalence ranges from 9%-23%, and IBS imposes profound burdens on patients, physicians, and the healthcare system. The pathophysiology is poorly understood.

Research motivation

Faecal retention is suspected to play a role in IBS symptoms. However, few colonic transit studies exist, and none have included simultaneous determination of colonic faecal content. Such information would likely have implications for choice of therapeutic decisions.

Research objectives

The present case-control study was performed to compare colonic transit time (CTT) and faecal load between IBS-patients and healthy controls. We further aimed to compare these parameters in patients before and after treatment with a prokinetic regime.

Research methods

CTT and faecal load were measured by performing a marker study. IBS-patients swallowed a capsule containing 24 radiopaque markers, and abdominal X-rays were taken after 48 h and 96 h. Control subjects ingested 24 markers at the same time for 6 d, followed by an X-ray on day 7. For both groups, CTT was calculated in hours, and a faecal load score was estimated.

Research results

Compared to 44 healthy controls, 140 IBS-patients exhibited a significantly prolonged mean CTT (45.48 h *vs* 24.75 h, $P < 0.001$) and a significantly greater mean faecal loading scores in each colonic segment ($P < 0.001$). After the intervention, the mean CTT in IBS-patients was reduced from 45.48 h to 34.50 h ($P > 0.05$), with the post-

treatment CTT not significantly differing from the CTT among control subjects ($P > 0.05$). Moreover, following treatment, half of the patients were relieved from bloating, and the majority no longer experienced abdominal pain and had achieved a consistent daily stool.

Research conclusions

IBS-patients were examined by using a new method comprising the simultaneous determination of CTT and faecal load. Our results showed a significantly prolonged CTT and significantly heavier faecal loading in IBS-patients compared to healthy control persons. These findings may contribute to the IBS symptoms, which were relieved to some degree following treatment with a prokinetic regime. Studies are needed to examine further the association between faecal retention and symptoms.

Research perspectives

Simultaneous measurement of CTT and faecal load may serve as a diagnostic tool for investigating IBS-patients and could also be extended for use in patients with other bowel disorders. This method may also be useful for monitoring the effects of different treatment regimens.

REFERENCES

- 1 **Thompson WG**, Longstreth GF, Drossman DA, Heaton KW, Irvine EJ, Müller-Lissner SA. Functional bowel disorders and functional abdominal pain. *Gut* 1999; **45** Suppl 2: II43-II47 [PMID: 10457044 DOI: 10.1136/gut.45.2008.ii43]
- 2 **Oświęcimka J**, Szymlak A, Roczniak W, Girczys-Poledniok K, Kwiecień J. New insights into the pathogenesis and treatment of irritable bowel syndrome. *Adv Med Sci* 2017; **62**: 17-30 [PMID: 28135659 DOI: 10.1016/j.advms.2016.11.001]
- 3 **American College of Gastroenterology Task Force on Irritable Bowel Syndrome**, Brandt LJ, Chey WD, Foxx-Orenstein AE, Schiller LR, Schoenfeld PS, Spiegel BM, Talley NJ, Quigley EM. An evidence-based position statement on the management of irritable bowel syndrome. *Am J Gastroenterol* 2009; **104** Suppl 1: S1-S5 [PMID: 19521341 DOI: 10.1038/ajg.2008.122]
- 4 **Enck P**, Aziz Q, Barbara G, Farmer AD, Fukudo S, Mayer EA, Niesler B, Quigley EM, Rajilić-Stojanović M, Schemann M, Schwillie-Kiuntke J, Simren M, Zipfel S, Spiller RC. Irritable bowel syndrome. *Nat Rev Dis Primers* 2016; **2**: 16014 [PMID: 27159638 DOI: 10.1038/nrdp.2016.14]
- 5 **Ansari R**, Sohrabi S, Ghanaie O, Amjadi H, Merat S, Vahedi H, Khatibian M. Comparison of colonic transit time between patients with constipation-predominant irritable bowel syndrome and functional constipation. *Indian J Gastroenterol* 2010; **29**: 66-68 [PMID: 20443103 DOI: 10.1007/s12664-010-0015-2]
- 6 **Sadik R**, Björnsson E, Simrén M. The relationship between symptoms, body mass index, gastrointestinal transit and stool frequency in patients with irritable bowel syndrome. *Eur J Gastroenterol Hepatol* 2010; **22**: 102-108 [PMID: 19701093 DOI: 10.1097/MEG.0b013e32832ff9b]
- 7 **Longstreth GF**, Thompson WG, Chey WD, Houghton LA, Mearin F, Spiller RC. Functional bowel disorders. *Gastroenterology* 2006; **130**: 1480-1491 [PMID: 16678561 DOI: 10.1053/j.gastro.2005.11.061]
- 8 **Raahave D**. Faecal retention: A common cause in functional bowel disorders, appendicitis and haemorrhoids – with medical and surgical therapy (PhD thesis). Faculty of health and medical sciences: University of Copenhagen, 2014
- 9 **Bouchoucha M**, Devroede G, Arhan P, Strom B, Weber J, Cugnenc PH, Denis P, Barbier JP. What is the meaning of colorectal transit time measurement? *Dis Colon Rectum* 1992; **35**: 773-782 [PMID: 1644002 DOI: 10.1007/BF02050328]
- 10 **Martelli H**, Devroede G, Arhan P, Duguay C, Dornic C, Faverdin C. Some parameters of large bowel motility in normal man. *Gastroenterology* 1978; **75**: 612-618 [PMID: 710830 DOI: 10.1016/S0016-5085(19)31666-X]
- 11 **Zaslavsky C**, da Silveira TR, Maguilnik I. Total and segmental colonic transit time with radio-opaque markers in adolescents with functional constipation. *J Pediatr Gastroenterol Nutr* 1998; **27**: 138-142 [PMID: 9702642 DOI: 10.1097/00005176-199808000-00002]
- 12 **Devroede G**, Bouchoucha M, Steiber W. A simplified way to assess colorectal transit time. *Tech Coloproctol* 1999; **3**: 71-73 [DOI: 10.1007/s101510050018]
- 13 **Leech SC**, McHugh K, Sullivan PB. Evaluation of a method of assessing faecal loading on plain abdominal radiographs in children. *Pediatr Radiol* 1999; **29**: 255-258 [PMID: 10199902 DOI: 10.1007/s002470050583]
- 14 **Barr RG**, Levine MD, Wilkinson RH, Mulvihill D. Chronic and occult stool retention: a clinical tool for its evaluation in school-aged children. *Clin Pediatr (Phila)* 1979; **18**: 674, 676, 677-679, passim [PMID: 498690 DOI: 10.1177/000992287901801103]
- 15 **Blethyn AJ**, Verrier Jones K, Newcombe R, Roberts GM, Jenkins HR. Radiological assessment of constipation. *Arch Dis Child* 1995; **73**: 532-533 [PMID: 8546512 DOI: 10.1136/adc.73.6.532]

- 16 **van den Bosch M**, Graafmans D, Nievelstein R, Beek E. Systematic assessment of constipation on plain abdominal radiographs in children. *Pediatr Radiol* 2006; **36**: 224-226 [PMID: 16418835 DOI: 10.1007/s00247-005-0065-2]
- 17 **Koh H**, Lee MJ, Kim MJ, Shin JI, Chung KS. Simple diagnostic approach to childhood fecal retention using the Leech score and Bristol stool form scale in medical practice. *J Gastroenterol Hepatol* 2010; **25**: 334-338 [PMID: 19817956 DOI: 10.1111/j.1440-1746.2009.06015.x]
- 18 **Park HJ**, Noh SE, Kim GD, Joo MC. Plain abdominal radiograph as an evaluation method of bowel dysfunction in patients with spinal cord injury. *Ann Rehabil Med* 2013; **37**: 547-555 [PMID: 24020036 DOI: 10.5535/arm.2013.37.4.547]
- 19 **Starreveld JS**, Pols MA, Van Wijk HJ, Bogaard JW, Poen H, Smout AJ. The plain abdominal radiograph in the assessment of constipation. *Z Gastroenterol* 1990; **28**: 335-338 [PMID: 2238762]
- 20 **Bouchoucha M**, Devroede G, Dorval E, Faye A, Arhan P, Arsac M. Different segmental transit times in patients with irritable bowel syndrome and "normal" colonic transit time: is there a correlation with symptoms? *Tech Coloproctol* 2006; **10**: 287-296 [PMID: 17115321 DOI: 10.1007/s10151-006-0295-9]
- 21 **Sadik R**, Abrahamsson H, Stotzer PO. Gender differences in gut transit shown with a newly developed radiological procedure. *Scand J Gastroenterol* 2003; **38**: 36-42 [PMID: 12608462 DOI: 10.1080/00365520310000410]
- 22 **Metcalfe AM**, Phillips SF, Zinsmeister AR, MacCarty RL, Beart RW, Wolff BG. Simplified assessment of segmental colonic transit. *Gastroenterology* 1987; **92**: 40-47 [PMID: 3023168 DOI: 10.1016/0016-5085(87)90837-7]
- 23 **Abrahamsson H**, Antov S, Bosaeus I. Gastrointestinal and colonic segmental transit time evaluated by a single abdominal x-ray in healthy subjects and constipated patients. *Scand J Gastroenterol Suppl* 1988; **152**: 72-80 [PMID: 3254616 DOI: 10.3109/00365528809095938]
- 24 **Chan YK**, Kwan AC, Yuen H, Yeung YW, Lai KC, Wu J, Wong GS, Leung CM, Cheung WC, Wong CK. Normal colon transit time in healthy Chinese adults in Hong Kong. *J Gastroenterol Hepatol* 2004; **19**: 1270-1275 [PMID: 15482534 DOI: 10.1111/j.1440-1746.2004.03492.x]
- 25 **Holtmann GJ**, Ford AC, Talley NJ. Pathophysiology of irritable bowel syndrome. *Lancet Gastroenterol Hepatol* 2016; **1**: 133-146 [PMID: 28404070 DOI: 10.1016/S2468-1253(16)30023-1]
- 26 **Stasi C**, Rosselli M, Bellini M, Laffi G, Milani S. Altered neuro-endocrine-immune pathways in the irritable bowel syndrome: the top-down and the bottom-up model. *J Gastroenterol* 2012; **47**: 1177-1185 [PMID: 22766747 DOI: 10.1007/s00535-012-0627-7]
- 27 **Simrén M**, Barbara G, Flint HJ, Spiegel BM, Spiller RC, Vanner S, Verdu EF, Whorwell PJ, Zoetendal EG; Rome Foundation Committee. Intestinal microbiota in functional bowel disorders: a Rome foundation report. *Gut* 2013; **62**: 159-176 [PMID: 22730468 DOI: 10.1136/gutjnl-2012-302167]
- 28 **Suarez F**, Furne J, Springfield J, Levitt M. Insights into human colonic physiology obtained from the study of flatus composition. *Am J Physiol* 1997; **272**: G1028-G1033 [PMID: 9176210 DOI: 10.1152/ajpgi.1997.272.5.G1028]
- 29 **King TS**, Elia M, Hunter JO. Abnormal colonic fermentation in irritable bowel syndrome. *Lancet* 1998; **352**: 1187-1189 [PMID: 9777836 DOI: 10.1016/S0140-6736(98)02146-1]
- 30 **Agrawal A**, Houghton LA, Reilly B, Morris J, Whorwell PJ. Bloating and distension in irritable bowel syndrome: the role of gastrointestinal transit. *Am J Gastroenterol* 2009; **104**: 1998-2004 [PMID: 19491831 DOI: 10.1038/ajg.2009.251]
- 31 **Wall GC**, Bryant GA, Bottenberg MM, Maki ED, Miesner AR. Irritable bowel syndrome: a concise review of current treatment concepts. *World J Gastroenterol* 2014; **20**: 8796-8806 [PMID: 25083054 DOI: 10.3748/wjg.v20.i27.8796]
- 32 **Bueno L**, Fargeas MJ, Fioramonti J, Honde C. Effects of dopamine and bromocriptine on colonic motility in dog. *Br J Pharmacol* 1984; **82**: 35-42 [PMID: 6145468 DOI: 10.1111/j.1476-5381.1984.tb16439.x]
- 33 **Milo R**. Use of the peripheral dopamine antagonist, domperidone, in the management of gastrointestinal symptoms in patients with irritable bowel syndrome. *Curr Med Res Opin* 1980; **6**: 577-584 [PMID: 6996928 DOI: 10.1185/03007998009109491]
- 34 **Dai L**, Zhong LL, Ji G. Irritable bowel syndrome and functional constipation management with integrative medicine: A systematic review. *World J Clin Cases* 2019; **7**: 3486-3504 [PMID: 31750331 DOI: 10.12998/wjcc.v7.i21.3486]



Published by **Baishideng Publishing Group Inc**
7041 Koll Center Parkway, Suite 160, Pleasanton, CA 94566, USA
Telephone: +1-925-3991568
E-mail: bpgoffice@wjgnet.com
Help Desk: <https://www.f6publishing.com/helpdesk>
<https://www.wjgnet.com>

