



Correction to: Non-Invasive Multimodality Imaging Directly Shows TRPM4 Inhibition Ameliorates Stroke Reperfusion Injury

Bo Chen¹ · Gandi Ng¹ · Yahui Gao¹ · See Wee Low¹ · Edwin Sandanaraj^{1,2,3,4} · Boominathan Ramasamy⁵ · Sakthivel Sekar⁵ · Kishore Bhakoo⁵ · Tuck Wah Soong^{6,7} · Bernd Nilius⁸ · Carol Tang^{1,9,10} · Edward G. Robins⁵ · Julian Goggi⁵ · Ping Liao^{1,9,11}

Published online: 17 April 2019

© Springer Science+Business Media, LLC, part of Springer Nature 2019

Correction to: Translational Stroke Research (2019) 10:91–103

<https://doi.org/10.1007/s12975-018-0621-3>

The original version of the article unfortunately contained an error.

In Fig. 2a upper panel, in which the labeling for the middle picture should be TRPM4 (2hr) instead of TRPM4 (6hr).

The correct image is shown below:

The online version of the original article can be found at <https://doi.org/10.1007/s12975-018-0621-3>

✉ Julian Goggi
julian_goggi@sbic.a-star.edu.sg

✉ Ping Liao
ping_liao@nni.com.sg

¹ Department of Research, National Neuroscience Institute, Singapore, Singapore

² School of Biological Sciences, Nanyang Technological University, Singapore, Singapore

³ Singapore Institute for Clinical Sciences, Singapore, Singapore

⁴ Singapore Bioimaging Consortium, Singapore, Singapore

⁵ Singapore Bioimaging Consortium, Agency for Science, Technology and Research (A*STAR), 07-10 HELIOS, 11 Biopolis Way, Singapore 138667, Singapore

⁶ Department of Physiology, Yong Loo Lin School of Medicine, National University of Singapore, Singapore, Singapore

⁷ Ion Channel Research Lab, Singapore, Singapore

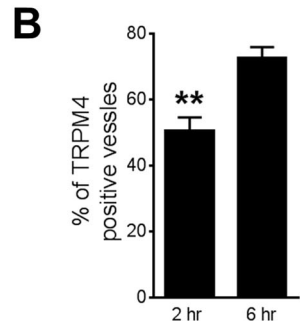
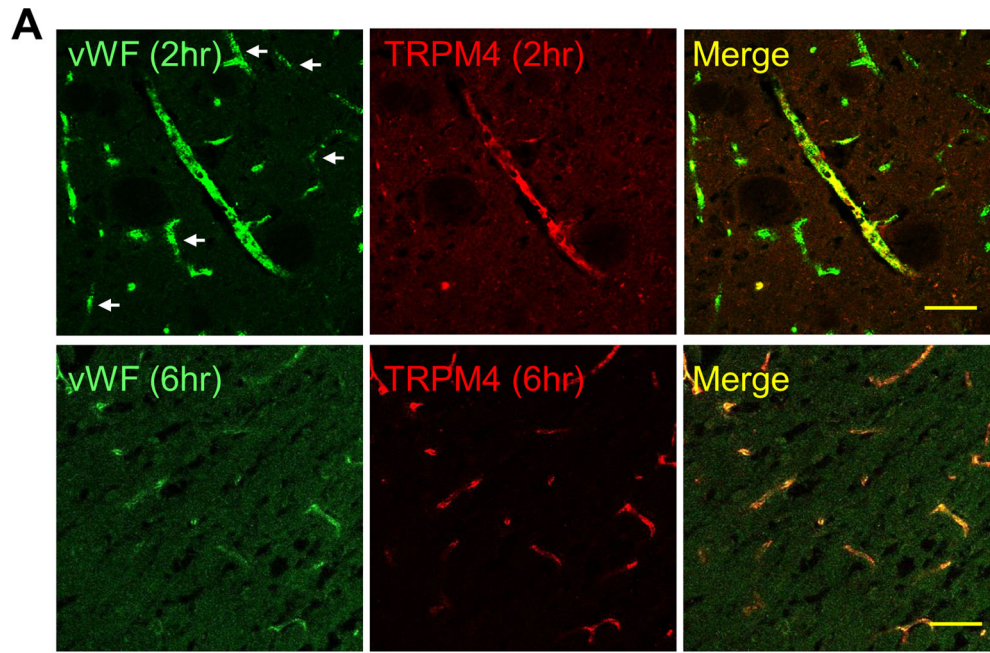
⁸ Department of Cellular and Molecular Medicine, KU Leuven, Leuven, Belgium

⁹ Duke-National University of Singapore Graduate Medical School, Singapore, Singapore

¹⁰ National Cancer Centre, Singapore, Singapore

¹¹ Calcium Signalling Lab, National Neuroscience Institute, 11 Jalan Tan Tock Seng, Singapore 308433, Singapore

Fig. 2 TRPM4 expression in the hyperacute phase of stroke. **a** Immunofluorescent staining of cerebral blood vessels with antibodies against vWF and TRPM4 in the ipsilateral striatum 2 h (upper panel) and 6 h (lower panel) after stroke induction. Arrows: smaller vessels do not express TRPM4 at 2 h post-stroke induction. Scale bars: 50 μ m. **b** Comparison of TRPM4-positive blood vessels in the ipsilateral hemispheres at 2 and 6 h post-stroke. ($n=6$ rats, $** p=0.0109$, Student's t test)



Publisher’s Note Springer Nature remains neutral with regard to jurisdictional claims in published maps and institutional affiliations.