

## CORONAVIRUS

# Transmission of SARS-CoV-2 on mink farms between humans and mink and back to humans

Bas B. Oude Munnink<sup>1\*</sup>, Reina S. Sikkema<sup>1</sup>, David F. Nieuwenhuijse<sup>1</sup>, Robert Jan Molenaar<sup>2</sup>, Emmanuelle Munger<sup>1</sup>, Richard Molenkamp<sup>1</sup>, Arco van der Spek<sup>3</sup>, Paulien Tolsma<sup>4</sup>, Ariene Rietveld<sup>5</sup>, Miranda Brouwer<sup>5</sup>, Noortje Bouwmeester-Vincken<sup>6</sup>, Frank Harders<sup>7</sup>, Renate Hakze-van der Honing<sup>7</sup>, Marjolein C. A. Wegdam-Blans<sup>8</sup>, Ruth J. Bouwstra<sup>2</sup>, Corine GeurtsvanKessel<sup>1</sup>, Annemiek A. van der Eijk<sup>1</sup>, Francisca C. Velkers<sup>9</sup>, Lidwien A. M. Smit<sup>10</sup>, Arjan Stegeman<sup>9</sup>, Wim H. M. van der Poel<sup>7</sup>, Marion P. G. Koopmans<sup>1</sup>

Animal experiments have shown that nonhuman primates, cats, ferrets, hamsters, rabbits, and bats can be infected by severe acute respiratory syndrome coronavirus 2 (SARS-CoV-2). In addition, SARS-CoV-2 RNA has been detected in felids, mink, and dogs in the field. Here, we describe an in-depth investigation using whole-genome sequencing of outbreaks on 16 mink farms and the humans living or working on these farms. We conclude that the virus was initially introduced by humans and has since evolved, most likely reflecting widespread circulation among mink in the beginning of the infection period, several weeks before detection. Despite enhanced biosecurity, early warning surveillance, and immediate culling of animals in affected farms, transmission occurred between mink farms in three large transmission clusters with unknown modes of transmission. Of the tested mink farm residents, employees, and/or individuals with whom they had been in contact, 68% had evidence of SARS-CoV-2 infection. Individuals for which whole genomes were available were shown to have been infected with strains with an animal sequence signature, providing evidence of animal-to-human transmission of SARS-CoV-2 within mink farms.

In late December 2019, severe acute respiratory syndrome coronavirus 2 (SARS-CoV-2) was identified as the cause of a viral pneumonia outbreak, possibly related to a seafood and live animal market in Wuhan, China (1). Since then, SARS-CoV-2 has spread across the world. By 8 October 2020, more than 36.1 million people had been infected with SARS-CoV-2, resulting in more than 1 million deaths (2). In the Netherlands, more than 155,000 infections have been confirmed, more than 6500 SARS-CoV-2-related deaths have been reported, and nonpharmaceutical interventions have been put into place to prevent further spread of SARS-CoV-2 (3).

In view of the similarities of the new virus and SARS-CoV-1, a zoonotic origin of the outbreak was suspected and linked to a Wuhan fresh market where various animals—including fish, shellfish, poultry, wild birds, and exotic animals—were sold. However, other cases with onset well before the period correlated with the Wuhan market-associated cluster were

observed, which suggests the possibility of other sources (4). Although closely related coronaviruses found in bats (5, 6) and pangolins (7, 8) have the greatest sequence identity to SARS-CoV-2, the most likely divergence of SARS-CoV-2 from the most closely related bat sequence is estimated to have occurred between 1948 and 1982 (9). Therefore, the animal reservoir(s) of SARS-CoV-2 is(are) yet to be identified.

Similarly to SARS-CoV-1, SARS-CoV-2 binds to the host angiotensin-converting enzyme 2 (ACE2) receptor. On the basis of ACE2 similarities, a range of different animals have been used as models. Experimental infections in dogs (10), cats (10–13), ferrets (10, 14), hamsters (15, 16), rhesus macaques (17), tree shrews (18), cynomolgus macaques (19), African green monkeys (20), common marmosets (21), rabbits (22), and fruit bats (23) have shown that these species are susceptible to SARS-CoV-2, and experimentally infected cats, tree shrews, hamsters, and ferrets could also transmit the virus. By contrast, experimental infection of pigs and several poultry species with SARS-CoV-2 proved to be unsuccessful (10, 23, 24). SARS-CoV-2 has also sporadically been identified in naturally infected animals. In the United States and Hong Kong, SARS-CoV-2 RNA has been detected in dogs (25). In the Netherlands, France, Hong Kong, Belgium, Spain, and the United States, cats have tested positive for SARS-CoV-2 by reverse transcription polymerase chain reaction (RT-PCR) (26–30). Furthermore, SARS-CoV-2 has been detected in four tigers and three lions in a zoo in New York

(31). In Italy, the Netherlands, and Wuhan, China, antibodies to SARS-CoV-2 have been detected in cats (29, 32, 33). Recently, SARS-CoV-2 was detected in farmed mink (*Neovison vison*), resulting in signs of respiratory disease and increased mortality (29, 34).

In response to the outbreaks in mink farms, the Dutch national response system for zoonotic diseases was activated. Although the public health risk of exposure to animals with SARS-CoV-2 was determined to be low, increased awareness of animals' possible involvement in the COVID-19 epidemic was needed. Therefore, from 20 May 2020 onward, mink farmers, veterinarians, and laboratories were obliged to report symptoms in mink (family Mustelidae) to the Netherlands Food and Consumer Product Safety Authority (NFCPSA), and an extensive surveillance system was established (35).

Whole-genome sequencing (WGS) can be used to monitor the emergence and spread of pathogens (36–39). As part of the surveillance effort in the Netherlands, more than 1750 SARS-CoV-2 viruses have been sequenced to date from patients from different parts of the country (40). Here, we describe an in-depth investigation into the SARS-CoV-2 outbreak in mink farms and mink farm employees in the Netherlands, combining epidemiological information, surveillance data, and WGS on the human–animal interface.

SARS-CoV-2 was first diagnosed on two mink farms (designated NB1 and NB2) in the Netherlands on 23 and 25 April 2020, respectively. After the initial detection of SARS-CoV-2 on these farms, a thorough investigation was initiated to identify potential transmission routes and to perform an environmental and occupational risk assessment. Here, we describe the results of the investigation of the first 16 SARS-CoV-2-affected mink farms by combining SARS-CoV-2 diagnostics, WGS, and in-depth interviews.

Owners and employees of the 16 mink farms with SARS-CoV-2-positive animals were included in the contact tracing investigation by the Netherlands Municipal Health Services and were tested according to national protocol. Ninety-seven individuals were tested by either serological assays and/or RT-PCR. Forty-three of 88 (49%) upper respiratory tract samples tested positive by RT-PCR, whereas 38 of 75 (51%) serum samples tested positive for SARS-CoV-2-specific antibodies. In total, 66 of 97 (68%) tested individuals had evidence for SARS-CoV-2 infection (Table 1).

During the interview on 28 April, four of five employees from NB1 reported that they had experienced respiratory symptoms before the outbreak was detected in minks, but none of them had been tested for SARS-CoV-2. Their symptom-onset dates ranged from 1 April to 9 May. For 16 of the mink (sampled on 28 April)

<sup>1</sup>Department of Viroscience, Erasmus MC, WHO Collaborating Centre for Arbovirus and Viral Hemorrhagic Fever Reference and Research, Rotterdam, Netherlands. <sup>2</sup>Royal GD, Deventer, Netherlands. <sup>3</sup>Netherlands Food and Consumer Product Safety Authority (NVWA), Utrecht, Netherlands. <sup>4</sup>Municipal Health Services GGD Brabant-Zuidoost, Eindhoven, Netherlands. <sup>5</sup>Municipal Health Services GGD Hart voor Brabant, 's-Hertogenbosch, Netherlands. <sup>6</sup>Municipal Health Services GGD Limburg-Noord, Venlo, Netherlands. <sup>7</sup>Wageningen Bioveterinary Research, Lelystad, Netherlands. <sup>8</sup>Stichting PAMM, Veldhoven, Netherlands. <sup>9</sup>Division of Farm Animal Health, Department of Population Health Sciences, Utrecht University, Utrecht, Netherlands. <sup>10</sup>Institute for Risk Assessment Sciences (IRAS), Utrecht University, Utrecht, Netherlands. \*Corresponding author: Email: b.oudemunnink@erasmusmc.nl

and one farm employee (sampled on 4 May), a whole-genome sequence was obtained (hCov-19/Netherlands/NoordBrabant\_177/2020). The human sequence clusters within the mink sequences, although it differs from the closest mink sequence by 7 nucleotides (nts) (Fig. 1 and cluster A in Figs. 2 and 3). On farm NB2, SARS-CoV-2 was diagnosed on 25 April. Retrospective analysis showed that one employee from NB2 had been hospitalized with SARS-CoV-2 on

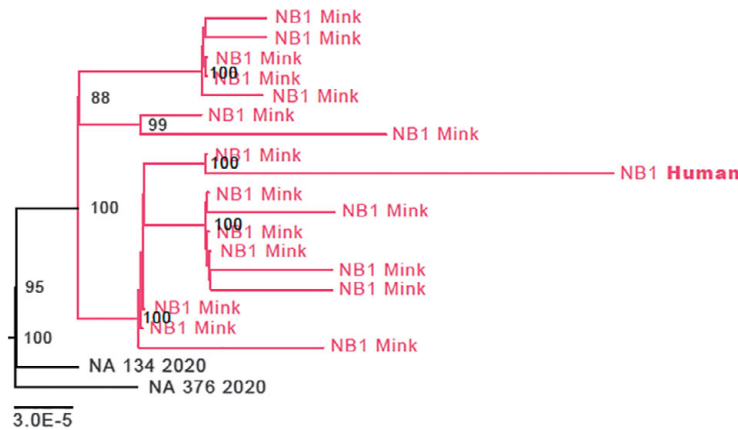
31 March. All samples from the eight employees taken on 30 April were negative by RT-PCR but tested positive for SARS-CoV-2 antibodies. The virus sequence obtained from NB2 animals was distinct from that of NB1 animals, indicating a separate introduction (Figs. 2 and 3, cluster B).

On mink farm NB3, SARS-CoV-2 infection was diagnosed on 7 May. Initially, all seven employees tested negative for SARS-CoV-2, but when retested between 19 and 26 May after

developing COVID-19-related symptoms, five of seven individuals working or living on the farm tested positive for SARS-CoV-2 RNA. Whole-genome sequences were obtained from these five individuals. The clustering of these sequences with the sequences derived from NB3 mink, together with initial negative test results and subsequent symptom onset, indicate that the employees were infected with SARS-CoV-2 after mink on the farm became infected. An additional infection was identified from contact tracing: An individual who did not visit the farm but had close contact with one of the employees became infected with the SARS-CoV-2 strain found on farm NB3. Animal and human sequences from farm NB3 were close to those from farm NB1, and both were categorized in cluster A.

Similarly, on mink farm NB7, zoonotic transmission from mink to humans likely occurred. On this farm, SARS-CoV-2 infection in mink was diagnosed on 31 May. NB7 employees initially tested negative for SARS-CoV-2, but several of them subsequently began to show symptoms. Between 10 June and 1 July, samples were taken from 10 employees, 8 of which tested positive for SARS-CoV-2 RNA. WGS of two NB7 employee samples showed that their virus sequences clustered with the sequences from the mink at this farm.

The sequences generated from animals and employees of mink farms were compared with ~1775 whole-genome sequences in the national database. To discriminate between community-acquired and mink farm-related



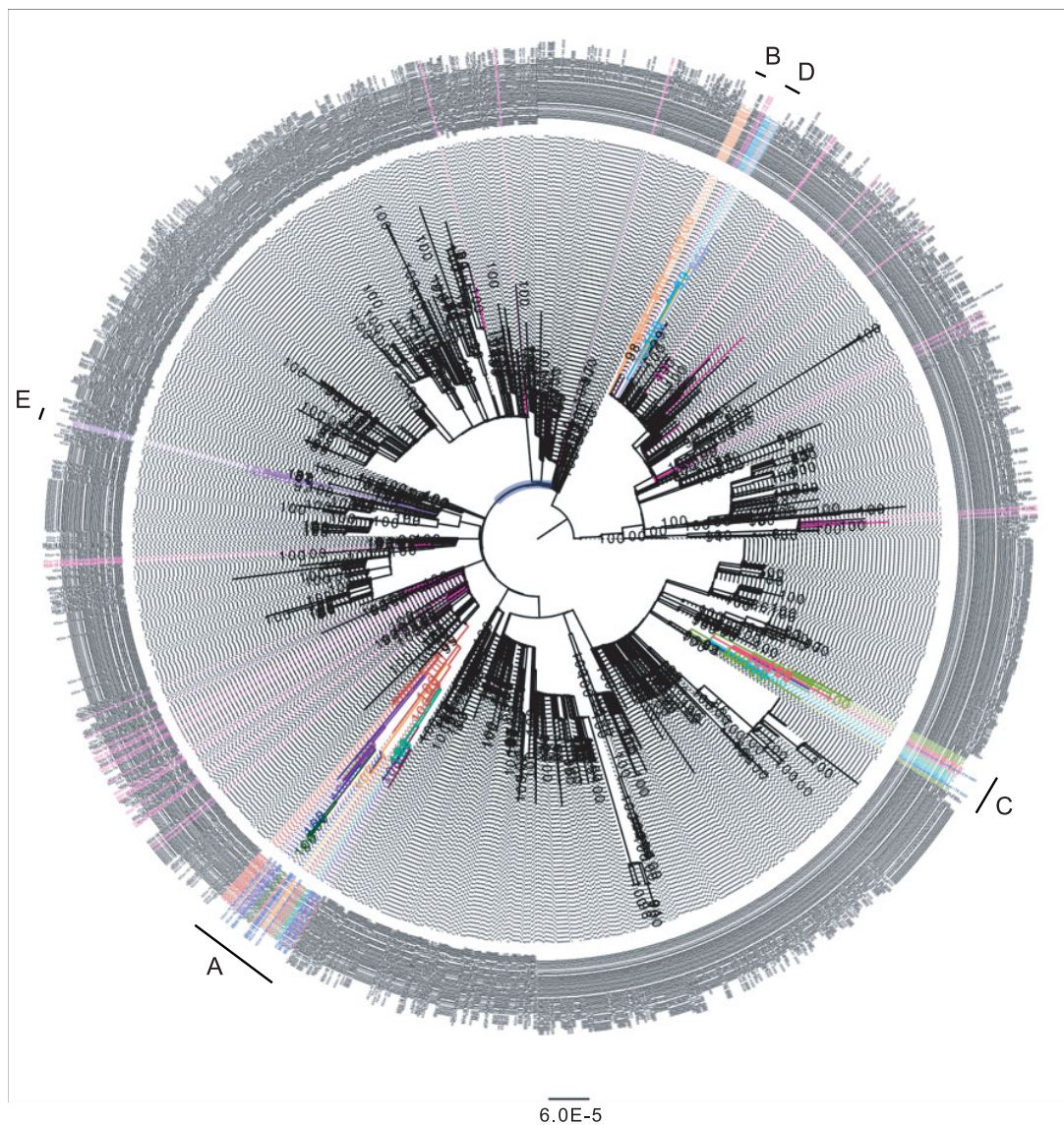
**Fig. 1. Phylogenetic analysis of mink farm NB1.** A maximum likelihood analysis was performed using all available SARS-CoV-2 sequences from the Netherlands. Sequences from NB1 are depicted in red, and the employee of NB1 is shown in bold. The two sequences in black at the root of the cluster are the closest-matching human genome sequences from the national SARS-CoV-2 sequence database. The scale bar represents units of substitutions per site.

**Table 1. Overview of human sampling on SARS-CoV-2-affected mink farms.**

| Farm  | First diagnosis in animals | Date(s) of sampling of employees and family members | PCR-positive individuals/tested individuals (%) | Serology-positive individuals/tested individuals (%) | Positive employees and family members/tested individuals (PCR and/or serology) |
|-------|----------------------------|---|---|--|--|
| NB1   | 23 April 2020              | 28 April 2020 to 11 May 2020                        | 5/6 (83%)                                       | 5/5 (100%)   | 6/6 (100%)   |
| NB2   | 25 April 2020              | 31 March 2020 to 30 April 2020                      | 1/2 (50%)                                       | 7/8 (88%)  | 7/8 (88%)  |
| NB3   | 7 May 2020                 | 11 May 2020 to 26 May 2020                          | 5/7 (71%)                                       | 0/6 (0%)*  | 5/7 (71%)  |
| NB4   | 7 May 2020                 | 8 May 2020  | 1/3 (33%)                                       | 2/2 (100%)   | 2/3 (66%)  |
| NB5   | 31 May 2020                | 1 June 2020   | 2/7 (29%)                                       | 3/6 (50%)  | 3/7 (43%)  |
| NB6   | 31 May 2020                | 1 June 2020   | 1/6 (17%)                                       | 4/6 (66%)  | 4/6 (66%)  |
| NB7   | 31 May 2020                | 10 June 2020 to 1 July 2020                         | 8/10 (80%)                                      | NA†  | 8/10 (80%)   |
| NB8   | 2 June 2020                | 3 June 2020   | 5/10 (50%)                                      | 5/9 (56%)  | 8/10 (80%)   |
| NB9   | 4 June 2020                | 7 June 2020   | 1/7 (14%)                                       | 1/7 (14%)  | 2/7 (29%)  |
| NB10  | 8 June 2020                | 11 June 2020  | 1/8 (13%)                                       | 3/8 (38%)  | 4/8 (50%)  |
| NB11  | 8 June 2020                | 11 June 2020  | 1/3 (33%)                                       | 0/2 (0%)   | 1/3 (33%)  |
| NB12  | 9 June 2020                | 11 June 2020  | 6/9 (66%)                                       | 2/8 (25%)  | 7/9 (78%)  |
| NB13  | 14 June 2020               | 11 June 2020 to 18 June 2020                        | 3/3 (100%)                                      | 0/2 (0%)   | 3/3 (100%)   |
| NB14  | 14 June 2020               | 14 June 2020  | 1/3 (33%)                                       | 5/6 (83%)  | 5/6 (83%)  |
| NB15  | 21 June 2020               | 10 June 2020 to 30 June 2020                        | 2/2 (100%)                                      | NA†  | 2/2 (100%)   |
| NB16  | 21 June 2020               | 23 June 2020  | 0/2 (0%)  | NA†  | 0/2 (0%)   |
| Total |                            |   | 43/88 (49%)                                     | 37/75 (49%)  | 66/97 (68%)  |

\*Serology was performed ~1 week before the positive PCR test.

†No serology was performed (NA, not applicable).



**Fig. 2. Maximum likelihood analysis of all SARS-CoV-2 sequences from the Netherlands.** Sequences derived from minks from different farms are indicated with different colors, human sequences related to the mink farms are shown in blue, and samples from similar areas (as determined by four-digit postal code) are shown in magenta. The scale bar represents units of substitutions per site.

infections and to determine the potential risk for people who live near mink farms, WGS was also performed on 34 SARS-CoV-2-positive samples (collected from 4 March until 29 April 2020) from individuals who live in the same geographic area (as determined by four-digit postal code) in which farms NB1 to NB4 are located. These local sequences, sampled in a proxy of ~19 km<sup>2</sup>, reflected the general diversity of SARS-CoV-2 seen in the Netherlands and were not related to the clusters of mink sequences found on the mink farms, thereby indicating that no spillover to people living in close proximity to mink farms had occurred and that the sequences from SARS-CoV-2-infected animals and farm workers clustered by farm (Fig. 2; sequences from community shown in magenta). The sequences from the mink farm investi-

gation were also compared with sequences from Poland ( $n = 65$ ) because many of the mink farm workers were seasonal migrants from Poland, but the Polish sequences were more divergent.

Phylogenetic analysis of the mink SARS-CoV-2 genomes showed that mink sequences of 16 farms were grouped into five different clusters (Figs. 2 and 3). Viruses from farms NB1, NB3, NB4, NB8, NB12, NB13, and NB16 belonged to cluster A; sequences from NB2 formed a distinct cluster (cluster B); those from farms NB6, NB7, NB9, and NB14 formed cluster C; those from NB5, NB8, NB10, and NB15 formed cluster D; and those from NB11 were designated as cluster E. On farm NB8, SARS-CoV-2 viruses from clusters A and D were found. A detailed inventory of possible common characteristics—

including farm owner, shared personnel, feed supplier, and veterinary service provider—was made. Multiple farms within a cluster shared the same owner; however, in most cases no common factor could be identified for most farms, and clustering could not be explained by geographic distance (Table 2 and Fig. 4).

In total, 18 sequences from mink farm employees or their close contacts were generated from seven different farms. In most cases, these human sequences were nearly identical to the mink sequences from the same farm. For NB1, the situation was different: The human sequence clusters deeply within the sequences derived from mink (Fig. 1), differing from the closest related mink sequence by 7 nts. This was also the case on farm NB14, with a 4-nt difference from the closest related

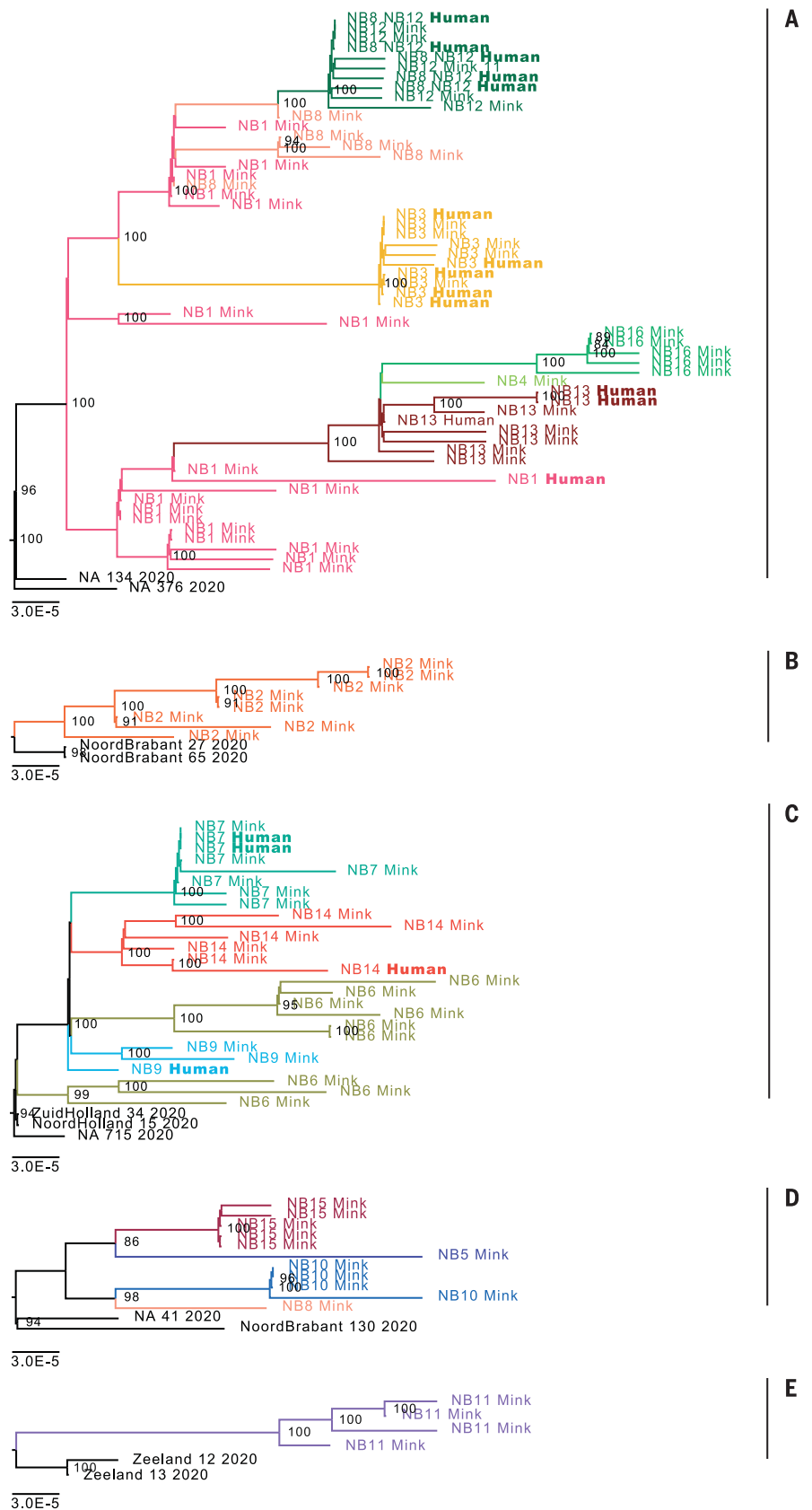
mink sequence. Sequences of employees at mink farm NB8 clustered with those of animals from NB12, likely because personnel were exchanged between these two farms.

SARS-CoV-2 was detected on mink farms NB1 and NB4 after reports of respiratory symptoms and increased mortality in mink. The sequences from farm NB1 showed a difference of 0 to 9 single-nucleotide polymorphisms (SNPs) (average of 3.9 nts) and sequences from NB4 had a difference of 0 to 8 SNPs (average of 3.6 nts), which is more than is generally observed in outbreaks in human settings. In addition, two deletions (one of 12 nts and one of 134 nts) were observed in a single sequence from NB1. The sequences of mink at NB6 had differences of 0 to 12 SNPs, and a deletion of 9 nts was observed in one sequence, whereas diversity was lower for the subsequent farm sequences (Table 2). After the initial detection of SARS-CoV-2, farms were screened weekly. The first, second, fifth, and sixth weekly screening yielded new positive cases.

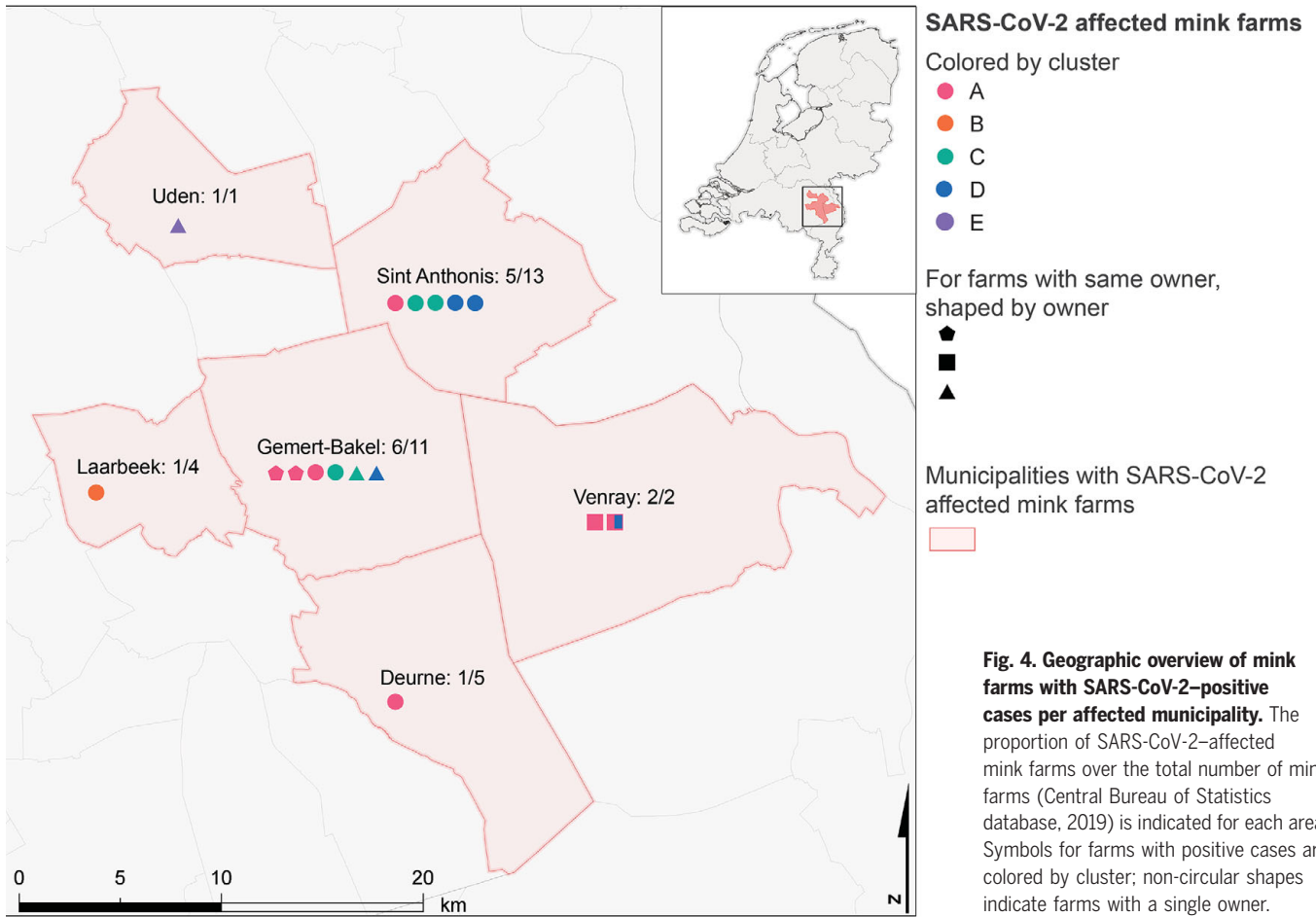
Several nonsynonymous mutations were identified among the mink sequences when compared with the Wuhan reference sequence NC\_045512.2. However, no particular amino acid substitutions were found in all-mink samples (fig. S1). Of note, three clusters had the position 614G variant (clusters A, C, and E), and two had the original variant. On the basis of the data available at this stage, there were no obvious disease presentation differences in animals or humans between clusters, but data collection and analysis are ongoing for cases after NB16. The mutations we observed can also be found in the general human population, and the same mutations were found in human cases related to the mink farms.

Our work shows evidence of ongoing SARS-CoV-2 transmission in mink farms and spillover events to humans. More research in minks and other mustelid species will be needed to determine whether these species are at risk of becoming reservoirs of SARS-CoV-2. After the detection of SARS-CoV-2 on mink farms, 68% of the tested farm workers and/or relatives or contacts would later become or had been infected with SARS-CoV-2, indicating that contact with SARS-CoV-2-infected mink is a risk factor for contracting COVID-19. Recently, an eightfold increase in cytidine-to-uridine (C→U) substitutions compared with uridine-to-cytidine (U→C) substitutions was described, suggestive of host adaptation (41). In the mink sequences, we observed a 3.5-fold increase in C→U compared with U→C substitutions, but the number of substitutions (185) was limited.

A high diversity was observed in the sequences from some mink farms, which is likely explained by multiple generations of viral infections in animals before the increase in mortality was detected. Current estimates



**Fig. 3. Phylogenetic analysis of 88 mink and 18 mink-related human SARS-CoV-2 sequences detected in the five mink farm clusters.** Sequences derived from different farms are depicted in different colors. The scale bar represents units of substitutions per site.



**Fig. 4. Geographic overview of mink farms with SARS-CoV-2-positive cases per affected municipality.** The proportion of SARS-CoV-2-affected mink farms over the total number of mink farms (Central Bureau of Statistics database, 2019) is indicated for each area. Symbols for farms with positive cases are colored by cluster; non-circular shapes indicate farms with a single owner.

**Table 2. Overview of the clusters detected on the different farms.** Note that veterinarians II and V were from the same veterinary practice. In regard to detection, notification was based on reporting of clinical signs, which was required from 26 April onward. EWS-Ser detection was based on a one-time nationwide compulsory serological screening of all mink farms at the end of May or early June by GD Animal Health. EWS-PM detection was based on the early warning monitoring system (EWS) for which carcasses of animals that died of natural causes were submitted weekly for PCR testing by GD Animal Health from the end of May onward [EWS-PM-1st to -6th postmortem (PM) screening]. NA, not applicable.

| Farm | Date of diagnosis | Sequence cluster | Same owner      | Feed supplier | Vet | No. of mink sequences (+no. of human sequences) | SNP differences (average) | Mink population size | Detection           |
|------|-------------------|------------------|-----------------|---------------|-----|---|---------------------------|----------------------|---------------------|
| NB1  | 24 April 2020     | A                | NB1, NB4        | 1             | I   | 17 (+1)   | 0 to 9 (3.9)              | 75,711               | Notification        |
| NB2  | 25 April 2020     | B                | NA              | 1             | II  | 8   | 0 to 8 (3.6)              | 50,473               | Notification        |
| NB3  | 7 May 2020        | A                | NA              | 2             | III | 5 (+5)  | 0 to 2 (0.6)              | 12,400               | Notification        |
| NB4  | 7 May 2020        | A                | NB1, NB4        | 1             | I   | 1   | NA                        | 67,945               | Contact tracing NB1 |
| NB5  | 31 May 2020       | D                | NA              | 1             | IV  | 1   | NA                        | 38,936               | EWS-Ser+PM-1st      |
| NB6  | 31 May 2020       | C                | NA              | 3             | V   | 9   | 0 to 12 (6.8)             | 54,515               | EWS-Ser+PM-1st      |
| NB7  | 31 May 2020       | C                | NB7, NB11, NB15 | 3             | II  | 6 (+2)  | 0 to 4 (1.4)              | 79,355               | EWS-PM-1st          |
| NB8  | 2 June 2020       | A and D          | NB8, NB12*      | 3             | V   | 6 (+5)  | 0 to 6 (2.6)              | 39,144               | EWS-Ser+PM-1st      |
| NB9  | 4 June 2020       | C                | NA              | 2             | V   | 2 (+1)  | 0 to 3 (1.5)              | 32,557               | EWS-Ser+PM-2nd      |
| NB10 | 8 June 2020       | D                | NA              | 3             | II  | 4   | 0 to 3 (1.1)              | 26,824               | EWS-Ser+PM-2nd      |
| NB11 | 8 June 2020       | E                | NB7, NB11, NB15 | 3             | II  | 4   | 0 to 4 (2.2)              | 38,745               | EWS-PM-2nd          |
| NB12 | 9 June 2020       | A                | NB8, NB12*      | 3             | II  | 5   | 0 to 3 (1.2)              | 55,352               | Notification        |
| NB13 | 14 June 2020      | A                | NA              | 3             | V   | 5 (+3)  | 0 to 5 (3.2)              | 20,366               | EWS-PM-5th          |
| NB14 | 14 June 2020      | C                | NA              | 3             | II  | 5 (+1)  | 0 to 7 (3.7)              | 28,375               | EWS-PM-5th          |
| NB15 | 21 June 2020      | D                | NB7, NB11, NB15 | 3             | II  | 5   | 0 to 2 (0.6)              | 35,928               | EWS-PM-6th          |
| NB16 | 21 June 2020      | A                | NA              | 3             | II  | 5   | 0 to 4 (1.6)              | 66,920               | EWS-PM-6th          |

\*There was exchange of personnel in these two locations.

indicate that the substitution rate of SARS-CoV-2 is around  $1.16 \times 10^{-3}$  substitutions per site per year in the human population (42), which corresponds to around one mutation per 2 weeks. This could mean that the virus was already circulating in mink farms for some time before it was identified. However, a relatively high sequence diversity was also observed in farmed mink that tested negative week before a positive test, hinting toward a faster evolutionary rate of the virus in the mink population. Mink farms have large populations of animals, living at high density, which may promote virus transmission. However, the moment of viral introduction was not known, which makes it difficult to draw definite conclusions about the substitution rate in mink farms. Our sequencing did not reveal any systematic mutations that would need to be assessed for potential phenotypic effects. The generation interval for SARS-CoV-2 in humans has been estimated to be around 4 to 5 days (43), but with high-dose exposure in a farm with a high number and density of animals, this interval could potentially be shorter.

Further evidence that animals were the most likely source of human infection was provided by the clear phylogenetic separation between mink farm-related human and animal sequences and sequences from human cases within the same geographic area (as determined by four-digit postal code). However, some of the farm-related humans may have been infected within their household, not directly from mink. Spillover into the local community was not observed in our sequence data.

Thus far, the investigation has failed to identify common factors that might explain farm-to-farm spread, possibly via temporary workers who were not included in testing. Since our observations were made, SARS-CoV-2 infections have also been described in mink farms elsewhere (44–46). Additional research efforts are needed, as it is imperative that the fur production and trading sector not become a reservoir for future spillover of SARS-CoV-2 to humans.

## REFERENCES AND NOTES

- N. Zhu et al., *N. Engl. J. Med.* **382**, 727–733 (2020).
- E. Dong, H. Du, L. Gardner, *Lancet Infect. Dis.* **20**, 533–534 (2020).
- B. B. Oude Munnink et al., *Nat. Med.* **26**, 1405–1410 (2020).
- F. Wu et al., *Nature* **579**, 265–269 (2020).
- H. Zhou et al., *Curr. Biol.* **30**, 3896 (2020).
- P. Zhou et al., *Nature* **579**, 270–273 (2020).
- T. T. Y. Lam et al., *Nature* **583**, 282–285 (2020).
- G. Z. Han, *Trends Microbiol.* **28**, 515–517 (2020).
- M. F. Boni et al., *Nat. Microbiol.* **5**, 1408–1417 (2020).
- J. Shi et al., *Science* **368**, 1016–1020 (2020).
- P. J. Halfmann et al., *N. Engl. J. Med.* **383**, 592–594 (2020).
- GOV.UK, COVID-19 confirmed in pet cat in the UK (2020); [www.gov.uk/government/news/covid-19-confirmed-in-pet-cat-in-the-uk](http://www.gov.uk/government/news/covid-19-confirmed-in-pet-cat-in-the-uk).
- I. Ruiz-Arrondo et al., *Transbound. Emerg. Dis.* **10.1111/tbed.13803** (2020).
- M. Richard et al., *Nat. Commun.* **11**, 3496 (2020).
- S. F. Sia et al., *Nature* **583**, 834–838 (2020).
- J. F.-W. Chan et al., *Clin. Infect. Dis.* **71**, 2428–2446 (2020).
- V. J. Munster et al., *Nature* **585**, 268–272 (2020).
- Y. Zhao et al., *Sci. Rep.* **10**, 16007 (2020).
- B. Rockx et al., *Science* **368**, 1012–1015 (2020).
- C. Woolsey, V. Borisevich, A. N. Prasad, K. N. Agans, D. J. Deer, N. S. Dobias, J. C. Heymann, S. L. Foster, C. B. Levine, L. Medina, K. Melody, J. B. Geisbert, K. A. Fenton, T. W. Geisbert, R. W. Cross, Establishment of an African green monkey model for COVID-19. *bioRxiv* 2020.05.17.100289 [Preprint]. 17 May 2020. <https://doi.org/10.1101/2020.05.17.100289>.
- S. Lu et al., *Signal Transduct. Target. Ther.* **5**, 157 (2020).
- B. L. Haagmans, D. Noack, N. M. Okba, W. Li, C. Wang, R. de Vries, S. Herfst, D. de Meulder, P. van Run, B. Rijnders, C. Rokx, F. van Kuppeveld, F. Grosveld, C. GeurtsvanKessel, M. Koopmans, B. Jan Bosch, T. Kuijken, B. Rockx, SARS-CoV-2 neutralizing human antibodies protect against lower respiratory tract disease in a hamster model. *bioRxiv* 2020.08.24.264630 [Preprint]. 24 August 2020. <https://doi.org/10.1101/2020.08.24.264630>.
- K. Schlottau, M. Rissmann, A. Graaf, J. Schön, J. Sehl, C. Wylezich, D. Höper, T. C. Mettenleiter, A. Balkema-Buschmann, T. Harder, C. Grund, D. Hoffmann, A. Breithaupt, M. Beer, Experimental Transmission Studies of SARS-CoV-2 in Fruit Bats, Ferrets, Pigs and Chickens. SSRN 3578792. 15 April 2020. <https://doi.org/10.2139/ssrn.3578792>.
- D. L. Suarez, M. J. Pantin-Jackwood, D. E. Swayne, S. A. Lee, S. M. DeBlois, E. Spackman, Lack of susceptibility of poultry to SARS-CoV-2 and MERS-CoV. *bioRxiv* 2020.06.16.154658 [Preprint]. 16 June 2020. <https://doi.org/10.1101/2020.06.16.154658>.
- T. H. C. Sit et al., *Nature* **586**, 776–778 (2020).
- C. Sailleau et al., *Transbound. Emerg. Dis.* **67**, 2324–2328 (2020).
- A. Newman et al., *MMWR Morb. Mortal. Wkly. Rep.* **69**, 710–713 (2020).
- ProMED, “COVID-19 update (166): China (Hong Kong) animal, cat, OIE, resolved,” 20200508.7314521 (2020); <https://promedmail.org/promed-post/?id=7314521>.
- N. Oreshkova et al., *Euro Surveill.* **25**, 2001005 (2020).
- J. Segalés et al., *Proc. Natl. Acad. Sci. U.S.A.* **117**, 24790–24793 (2020).
- R. Gollakner, I. Capua, *Vet. Ital.* **56**, 7–8 (2020).
- Q. Zhang, H. Zhang, K. Huang, Y. Yang, X. Hui, J. Gao, X. He, C. Li, W. Gong, Y. Zhang, C. Peng, X. Gao, H. Chen, Z. Zou, Z. Shi, M. Jin, SARS-CoV-2 neutralizing serum antibodies in cats: A serological investigation. *bioRxiv* 2020.04.01.021196 [Preprint]. 3 April 2020. <https://doi.org/10.1101/2020.04.01.021196>.
- E. I. Patterson, G. Elia, A. Grassi, A. Giordano, C. Desario, M. Medardo, S. L. Smith, E. R. Anderson, T. Prince, G. T. Patterson, E. Lorusso, M. S. Lucente, G. Lanave, S. Lauzi, U. Bonfanti, A. Stranieri, V. Martella, F. S. Basano, V. R. Barrs, A. D. Radford, U. Agrimi, G. L. Hughes, S. Paltrinieri, N. Decaro, Evidence of exposure to SARS-CoV-2 in cats and dogs from households in Italy. *bioRxiv* 2020.07.21.214346 [Preprint]. 23 July 2020. <https://doi.org/10.1101/2020.07.21.214346>.
- R. J. Molenaar et al., *Vet. Pathol.* **57**, 653–657 (2020).
- NVWA, Bedrijfsmatig gehouden dieren en SARS-CoV-2; [www.nvwa.nl/nieuws-en-media/actuele-onderwerpen/corona/g/bedrijfsmatig-gehouden-dieren-en-corona/](http://www.nvwa.nl/nieuws-en-media/actuele-onderwerpen/corona/g/bedrijfsmatig-gehouden-dieren-en-corona/)
- B. B. Oude Munnink et al., *Sci. Rep.* **10**, 2798 (2020).
- A. Arias et al., *Virus Evol.* **2**, vew016 (2016).
- N. R. Faria et al., *Science* **361**, 894–899 (2018).
- J. Quick et al., *Nature* **530**, 228–232 (2016).
- R. S. Sikkema et al., *Lancet Infect. Dis.* **20**, 1273–1280 (2020).
- P. Simmonds, *mSphere* **5**, e00408-20 (2020).
- D. S. Candido et al., *Science* **369**, 1255–1260 (2020).
- T. Ganyani et al., *Euro Surveill.* **25**, 2000257 (2020).
- E. Cahan, *Science* **10.1126/science.abe3870** (2020).
- ProMED, “COVID-19 update (319): Spain (AR) animal, farmed mink, 1st rep,” 20200717.7584560 (2020); <https://promedmail.org/promed-post/?id=7584560>.
- ProMED, “COVID-19 update (266): Denmark (ND) animal, farmed mink, 1st rep,” 20200617.7479510 (2020); <https://promedmail.org/promed-post/?id=20200617.7479510>.

## ACKNOWLEDGMENTS

We would like to acknowledge R. van Houdt, J. Schinkel, J. Koopsen, and R. Zonneveld (Amsterdam UMC); B. Wintermans (ARDZ); E. Schmid (GGD Goes); B. Rump (GGD Zeeland); J. Filipse and C. Oliveira dos Santos (Isala Hospital, Laboratory of Clinical Microbiology and Infectious Diseases); T. Schuur (Izore); R. Nijhuis (Meander Medisch Centrum); S. Pas (Microvida); B. de Leeuw (RLM Microbiologie); and R. Jansen, J. Kalpoe, and W. van der Reijden (Streeklab Haarlem) for sample provision and A. van der Linden, M. Boter, and I. Chestakova (Erasmus MC) for technical assistance. **Funding:** This work has received funding from the European Union’s Horizon 2020 research and innovation program under grants 874735 (VEO), 848096 (SHARP JA), and 101003589 (RECoVER); from ZonMW under grant 10150062010005; and from the Netherlands Ministry of Agriculture, Nature and Food Quality. **Author contributions:** Conceptualization: B.B.O.M., R.S.S., A.S., and M.P.G.K.; Investigation: B.B.O.M., D.F.N., R.S.S., A.S., M.P.G.K., L.A.M.S., W.H.M.v.d.P., R.J.M., R.J.B., E.M., R.M., A.v.d.S., P.T., A.R., M.B., N.B.-V., F.H., R.H.-v.d.H., M.C.A.W.-B., R.J.B., C.G., A.A.v.d.E., F.C.V., and L.A.M.S.; Supervision: M.P.G.M.; Writing – original draft: B.B.O.M., R.S.S., and M.P.G.K.; Writing – review & editing: all authors. **Competing interests:** The authors declare no competing interests. **Data and material availability:** All data, code, and materials used in this work are publicly available. All sequences are publicly available in the GISAID database under accession numbers EPI\_ISL\_461190 to EPI\_ISL\_461192, EPI\_ISL\_461200, EPI\_ISL\_461202, EPI\_ISL\_461203, EPI\_ISL\_522987 to EPI\_ISL\_523034, EPI\_ISL\_523040, EPI\_ISL\_523046, EPI\_ISL\_523068, EPI\_ISL\_523070, EPI\_ISL\_523072, EPI\_ISL\_523073, EPI\_ISL\_523075, EPI\_ISL\_523085, EPI\_ISL\_523089 to EPI\_ISL\_523120, EPI\_ISL\_523282 to EPI\_ISL\_523286, EPI\_ISL\_523301, EPI\_ISL\_523310 to EPI\_ISL\_523312, EPI\_ISL\_523333, EPI\_ISL\_523493, and EPI\_ISL\_523494. Ethical approval was not required for this study, as anonymous aggregated data were used, and no medical interventions were made on animal or human subjects. This work is licensed under a Creative Commons Attribution 4.0 International (CC BY 4.0) license, which permits unrestricted use, distribution, and reproduction in any medium, provided the original work is properly cited. To view a copy of this license, visit <https://creativecommons.org/licenses/by/4.0/>. This license does not apply to figures/photos/artwork or other content included in the article that is credited to a third party; obtain authorization from the rights holder before using such material.

## SUPPLEMENTARY MATERIALS

[science.sciencemag.org/content/371/6525/172/suppl/DC1](https://science.sciencemag.org/content/371/6525/172/suppl/DC1)  
Materials and Methods  
Fig. S1  
Table S1  
References (47–63)  
MDAR Reproducibility Checklist

[View/request a protocol for this paper from Bio-protocol.](#)

1 September 2020; accepted 5 November 2020  
Published online 10 November 2020  
10.1126/science.abe5901