

Total Lymphocyte Count, Neutrophil-Lymphocyte Ratio, and Platelet-Lymphocyte Ratio as Prognostic Factors in Advanced Non-Small Cell Lung Cancer with Chemoradiotherapy [Corrigendum]

Song X, Chen D, Yuan M, Wang H, Wang Z. *Cancer Manag.* 2018;10:6677–6683

On page 6677, Abstract, Results subheading, the median baseline PLR should be 136.1.

On page 6680, Results section, 2nd paragraph, the median baseline PLR should be 136.1.

On page 6680, the red curve should be PLR ≥ 136.1 and the blue curve should be PLR < 136.1 . The COX analysis was not correct in the previous publication and it has been revised and shown below in the new [Tables 1](#) and [table 2](#). The correct [Figure 3](#) is shown below.

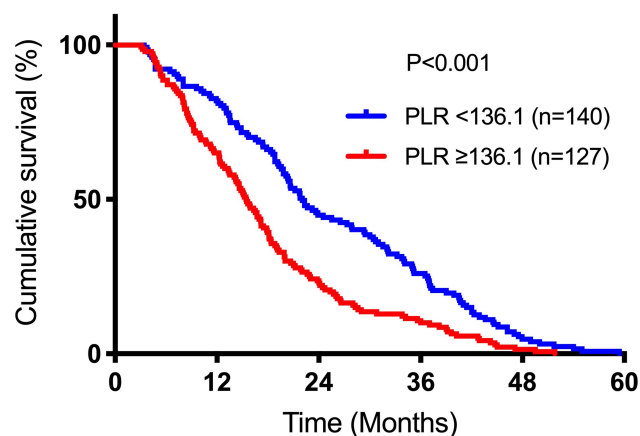


Figure 3 Kaplan–Meier plots of overall survival among patients who received chemoradiotherapy for advanced NSCLC stratified by baseline PLR.

Abbreviations: NSCLC, non-small cell lung cancer; PLR, platelet-to-lymphocyteratio.

On page 6680, [Table 2](#), the COX analysis was not correct in the previous publication and it has been revised. The correct [Table 2](#) is shown below.

Table 2 Univariate analysis of factors potentially associated with overall survival

Characteristics	HR	95% CI	P Value
Age ≥ 65	0.778	0.609–0.994	0.045
Male	0.935	0.733–1.193	0.588
KPS score ≥ 70	1.100	0.762–1.588	0.611
TNM stage IIIB	1.024	0.763–1.375	0.874
Current smoker	0.918	0.748–1.126	0.412
Receipt of induction chemotherapy	1.127	0.881–1.443	0.342
Receipt of concurrent chemotherapy	0.868	0.660–1.143	0.314
Pretreatment TLC $\geq 2.4 \times 10^3/\mu\text{L}$	0.594	0.464–0.759	<0.001
Pretreatment NLR ≥ 3.4	2.280	1.776–2.927	<0.001
Pretreatment PLR ≥ 136.1	1.745	1.364–2.232	<0.001

Abbreviations: HR, hazard ratio; CI, confidence interval; ECOG PS, Eastern Cooperative Oncology Group performance status; TNM, tumor-nodes-metastasis; TLC, total lymphocyte count; NLR, neutrophil-to-lymphocyte ratio; PLR, platelet-to-lymphocyte ratio.

On page 6681, [Table 3](#), the COX analysis was not correct in the previous publication and it has been revised. The correct [Table 3](#) is shown below.

Table 3 Multivariate analysis of factors potentially associated with overall survival Model 1 (TLC included)

	Model 1 (TLC Included)			Model 2 (NLR Included)			Model 3 (PLR Included)		
	HR	95% CI	P Value	HR	95% CI	P Value	HR	95% CI	P Value
Characteristics									
Age ≥ 65	0.902	0.697-1.167	0.431	0.858	0.67-1.099	0.226	0.825	0.645-1.054	0.124
Pretreatment TLC $\geq 2.4 \times 10^3/\mu\text{L}$	0.613	0.474-0.794	<0.001						
Pretreatment NLR ≥ 3.4				2.231	1.734-2.87	<0.001			
Pretreatment PLR ≥ 136.1							1.71	1.333-2.185	<0.001

Abbreviations: HR, hazard ratio; CI, confidence interval; ECOG PS, Eastern Cooperative Oncology Group performance status; TNM, tumor-nodes-metastasis; TLC, total lymphocyte count; NLR, neutrophil-to-lymphocyte ratio; PLR, platelet-to-lymphocyte ratio.

The authors have advised errors were caused by carelessness and mis-operation in statistics.

The authors apologize for this error and advise it does not affect the results of the paper.

Cancer Management and Research

Dovepress

Publish your work in this journal

Cancer Management and Research is an international, peer-reviewed open access journal focusing on cancer research and the optimal use of preventative and integrated treatment interventions to achieve improved outcomes, enhanced survival and quality of life for the cancer patient.

The manuscript management system is completely online and includes a very quick and fair peer-review system, which is all easy to use. Visit <http://www.dovepress.com/testimonials.php> to read real quotes from published authors.

Submit your manuscript here: <https://www.dovepress.com/cancer-management-and-research-journal>