

CASE REPORT

Open Access



# Intravenous methadone causes acute toxic and delayed inflammatory encephalopathy with persistent neurocognitive impairments

Jonathan Repple<sup>1,2†</sup>, Svea Haessner<sup>1\*†</sup>, Andreas Johnen<sup>1</sup>, Nils C. Landmeyer<sup>1</sup>, Andreas Schulte-Mecklenbeck<sup>1</sup>, Marc Pawlitzki<sup>1</sup>, Heinz Wiendl<sup>1</sup> and Gerd Meyer zu Hörste<sup>1</sup>

## Abstract

**Background:** The mu-opioid agonist methadone is administered orally and used in opioid detoxification and in the treatment of moderate-to-severe pain. Acute oral methadone-use and -abuse have been associated with inflammatory and toxic central nervous system (CNS) damage in some cases and cognitive deficits can develop in long-term methadone users. In contrast, reports of intravenous methadone adverse effects are rare.

**Case presentation:** Here, we report a patient who developed acute bilateral hearing loss, ataxia and paraparesis subsequently to intravenous methadone-abuse. While the patient gradually recovered from these deficits, widespread magnetic resonance imaging changes progressed and delayed-onset encephalopathy with signs of cortical dysfunction persisted. This was associated with changes in the composition of monocyte and natural killer cell subsets in the cerebrospinal fluid.

**Conclusion:** This case suggests a potential bi-phasic primary toxic and secondary inflammatory CNS damage induced by intravenous methadone.

**Keywords:** Methadone, Encephalopathy, Cognition, Flow cytometry, Case report

## Background

The mu-opioid agonist methadone is administered orally and is widely used in opioid detoxification and maintenance programs and in the treatment of moderate-to-severe pain in some countries. Oral methadone-use and -abuse have been associated with potential inflammatory and toxic central nervous system (CNS) adverse effects such as cerebellitis [1] and delayed-onset toxic leukoencephalopathy [2–4]. Moreover, cognitive deficits have been reported in long-term methadone users [5]. However, case reports of

intravenous methadone application [6] are rare and limited to ischemic changes or hypoxia-induced encephalopathy.

Here, we report a 19-year old male patient who subsequently to recreational intravenous methadone-abuse initially presented with acute neurological deficits with magnetic resonance imaging changes in the bilateral basal ganglia and the cerebellum. Subsequently, the patient developed wide-spread white matter T2-hyperintense lesions and delayed-onset encephalopathy accompanied by signs of secondary inflammation. Cerebral spinal fluid (CSF) flow cytometry revealed an inversion of monocyte and natural killer cell subsets while extensive neuropsychological examination demonstrated persistent cognitive deficits. This suggests a potential sequential toxic and secondary inflammatory CNS damage induced by intravenous methadone.

\* Correspondence: [svea.haessner@ukmuenster.de](mailto:svea.haessner@ukmuenster.de)

†Jonathan Repple and Svea Haessner are first authors.

<sup>1</sup>Department of Neurology with Institute of Translational Neurology, University Hospital Muenster, Albert-Schweitzer-Campus 1, A1, 48149 Münster, Germany

Full list of author information is available at the end of the article



© The Author(s). 2021 **Open Access** This article is licensed under a Creative Commons Attribution 4.0 International License, which permits use, sharing, adaptation, distribution and reproduction in any medium or format, as long as you give appropriate credit to the original author(s) and the source, provide a link to the Creative Commons licence, and indicate if changes were made. The images or other third party material in this article are included in the article's Creative Commons licence, unless indicated otherwise in a credit line to the material. If material is not included in the article's Creative Commons licence and your intended use is not permitted by statutory regulation or exceeds the permitted use, you will need to obtain permission directly from the copyright holder. To view a copy of this licence, visit <http://creativecommons.org/licenses/by/4.0/>. The Creative Commons Public Domain Dedication waiver (<http://creativecommons.org/publicdomain/zero/1.0/>) applies to the data made available in this article, unless otherwise stated in a credit line to the data.

### Case presentation

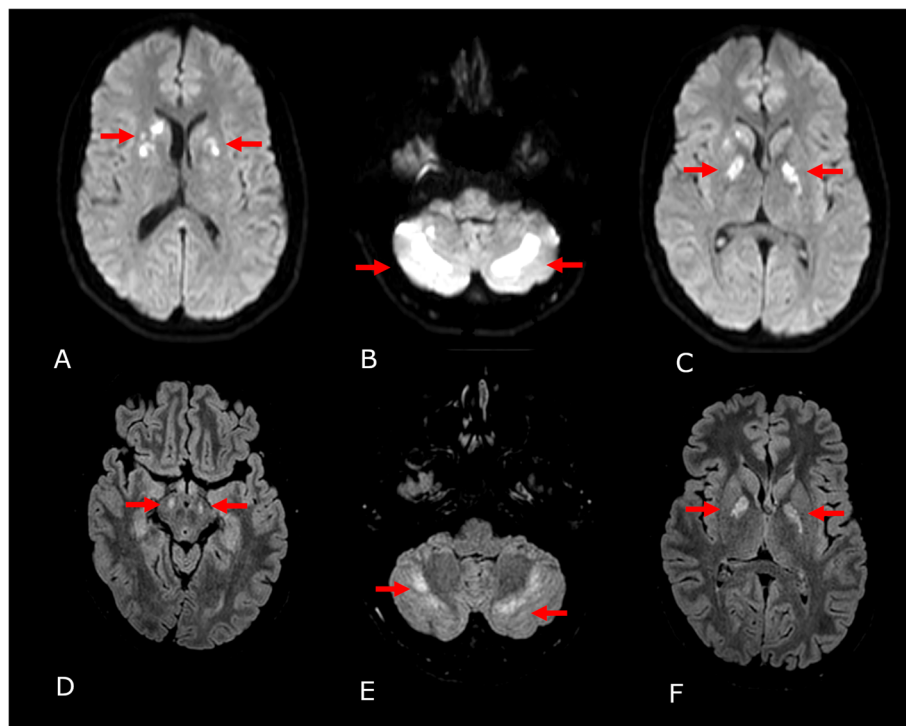
A 19-year old Caucasian male presented to the University Hospital of Muenster emergency department after being unresponsive for 5 h. After consuming liquid methadone intravenously the night before, the patient awoke and immediately complained of partial bilateral hearing loss, walking impairment and numbness of both inner thighs.

According to third-party history obtained from two accompanying friends (the patient was amnesic regarding the night before) the patient had consumed 3 × 2.5 mL of liquid methadone (produced for substitution therapy) intravenously. They reported observing unconsciousness, urinary incontinence, and a twist of his eyes. The patient and accompanying friends admitted to occasionally orally using illegally obtained methadone and cannabis but credibly denied consuming these substances or other opioids and illegal drugs in the days before. This was the first event of intravenous methadone abuse. The medical history of the patient was otherwise unremarkable.

In the neurological examination the patient presented fluctuating consciousness, severe psychomotor and cognitive slowing (slowed speech, increased response latency, concentration deficits), mild paraparesis of the lower limbs, clonus when testing the left patellar reflex and symmetrical bilateral hypoesthesia of the inner thigh. Medical examination showed a heart rate of 76

beats per minute, blood pressure 121/73 mmHg, peripheral oxygen saturation of 97% and temperature of 36.8 °C. An electrocardiogram (ECG) showed only un-specific change of the ST-segment in V2 and V3. FAST-ultrasound did not reveal any abnormalities.

Blood tests revealed a slightly elevated c-reactive protein (5.2 mg/dl; reference < .5 mg/dl), an elevated GOP (400 U/l; reference: < 30 U/l), GPT (118 U/l; reference < 40 U/l) and an increased creatin-kinase (7104 U/l; reference: < 174 U/l) and lactatdehydrogenase (563 U/l; reference 117–217 U/l). Sodium and potassium levels were within normal range. Intoxication screening of the urine was positive for methadone (2.55 mg/l) and cannabinoids (THC-COOH: 29 µg/l) but was negative for other drugs including non-methadone opioids and barbiturates, benzodiazepines, tricyclic antidepressive drugs, methamphetamines, cocaine, phencyclidine and paracetamol. An initial magnetic resonance imaging (MRI) showed multifocal, bilateral edema of the basal ganglia (Fig. 1a), of both cerebellar hemispheres (Fig. 1b) as well as the capsula interna (Fig. 1c) with diffusion restriction and apparent diffusion coefficient (ADC) signal reductions and fluid attenuated inversion recovery (FLAIR) imaging revealed hyperintense alterations in those areas. In addition, DWI and FLAIR imaging presented mild, confluent white matter abnormalities above the lateral



**Fig. 1** MRI imaging on day 1 and day 11 after intoxication. Timepoint 1 (Day 1 after intoxication) DWI sequences: **a** 1 basal ganglia lesions; **b** Bilateral cerebellar lesions; **c** Capsula interna lesions, posterior limb. Timepoint 2 (Day 11 after intoxication) FLAIR sequences: **d** new lesion at timepoint 2 in crura cerebri; **e** cerebellar lesions; **f** Capsula interna lesions, posterior limb

ventricle (Supplementary figure 1A, B). A time-of-flight (TOF)-angiography was normal. An initial spinal tap and subsequent cerebrospinal fluid analysis revealed a disturbance of the blood-brain barrier but normal total protein (542 mg/l) and normal lymphocyte counts (4/ $\mu$ L) and no intrathecal antibody synthesis. An electroencephalogram (EEG) revealed intermittent deceleration without epileptic discharges.

After admission, the patient was continuously awake and responsive and did not require intensive care treatment. Initially, walking was impaired without a need for a walking aid.

A transesophageal echocardiography revealed no cardiac abnormalities and especially no endocarditis. Repeated blood cultures were negative. Ear-nose-throat consultation revealed an injury of the inner ear with a diminished ability to hear below 55 dB. We performed treatment with prednisolone for 3 days (days 7–9) at 1 mg per kilogram body weight, which did not cause any immediate conceivable improvement of hearing but the hearing ability improved continuously. The unsteady gait improved to an almost normal level between days 9–11 of inpatient treatment. In contrast, cognitive deficits remained unchanged with increased response latency, slowed speech and concentration deficits. Additionally, the hypoesthesia of the inner thigh remained unchanged.

An additional MRI after 11 days revealed the known FLAIR-hyperintense lesions of basal ganglia, capsula interna (Fig. 1f) and subtle abnormalities above the lateral ventricles (Supplementary figure 1C, D) as well as the cerebellar hemispheres (Fig. 1e), which were now ADC increased. Interestingly, new lesions were found in the crura cerebri bilaterally (Fig. 1d). Another spinal tap revealed an increase of lymphocytes (11/ $\mu$ l), but otherwise no pathological findings with a normal blood-brain barrier. Flow cytometry analysis of cerebrospinal fluid (CSF) cells revealed a shift in monocyte subtypes with a significant increase of the non-classical CD14 + CD16+ monocyte-fraction and decrease of the CD56bright natural killer cell-fraction in the lymphocyte subset in the CSF (Fig. 2). Reference values had been previously collected from 29 patients (female: 58%, mean age: 24.1y + - 5.0 standard deviation (SD)) with psychosomatic disorder (exclusion of inflammatory CNS disorder; CSF: less than 5 cells/ $\mu$ l, normal protein, no intrathecal antibody synthesis).

With improved walking and hearing but considerable neurocognitive impairment we discharged the patient after 13 days to subsequent rehabilitation.

A neuropsychological assessment on day 18 revealed mild-to-moderate overall cognitive impairments when compared with normative data stratified for age and education (Fig. 3, Supplementary Table S1 for raw scores). Particularly tests assessing cognitive processing

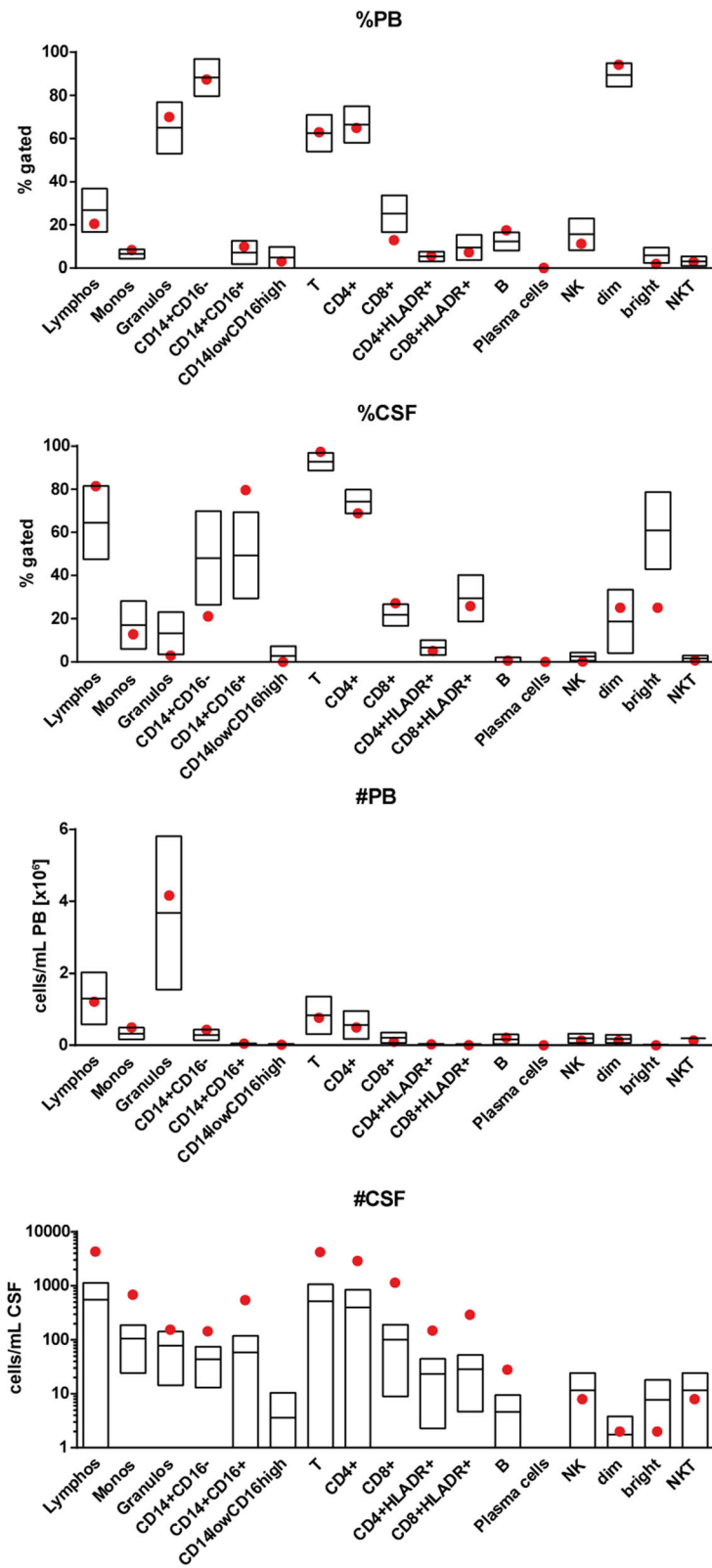
speed (e.g., TAP, SDMT, TMT, Time to copy a complex figure) showed consistent alterations from the norm. Learning efficiency of both verbal (RAVLT) and visual material (BVMT-R) was also impaired whereas recall from memory was only reduced for verbal but preserved for complex visual material. Interestingly, the patient showed preserved performance in tests for complex attention and higher executive functions such as planning abilities (D-KEFS Tower Test).

## Discussion and conclusions

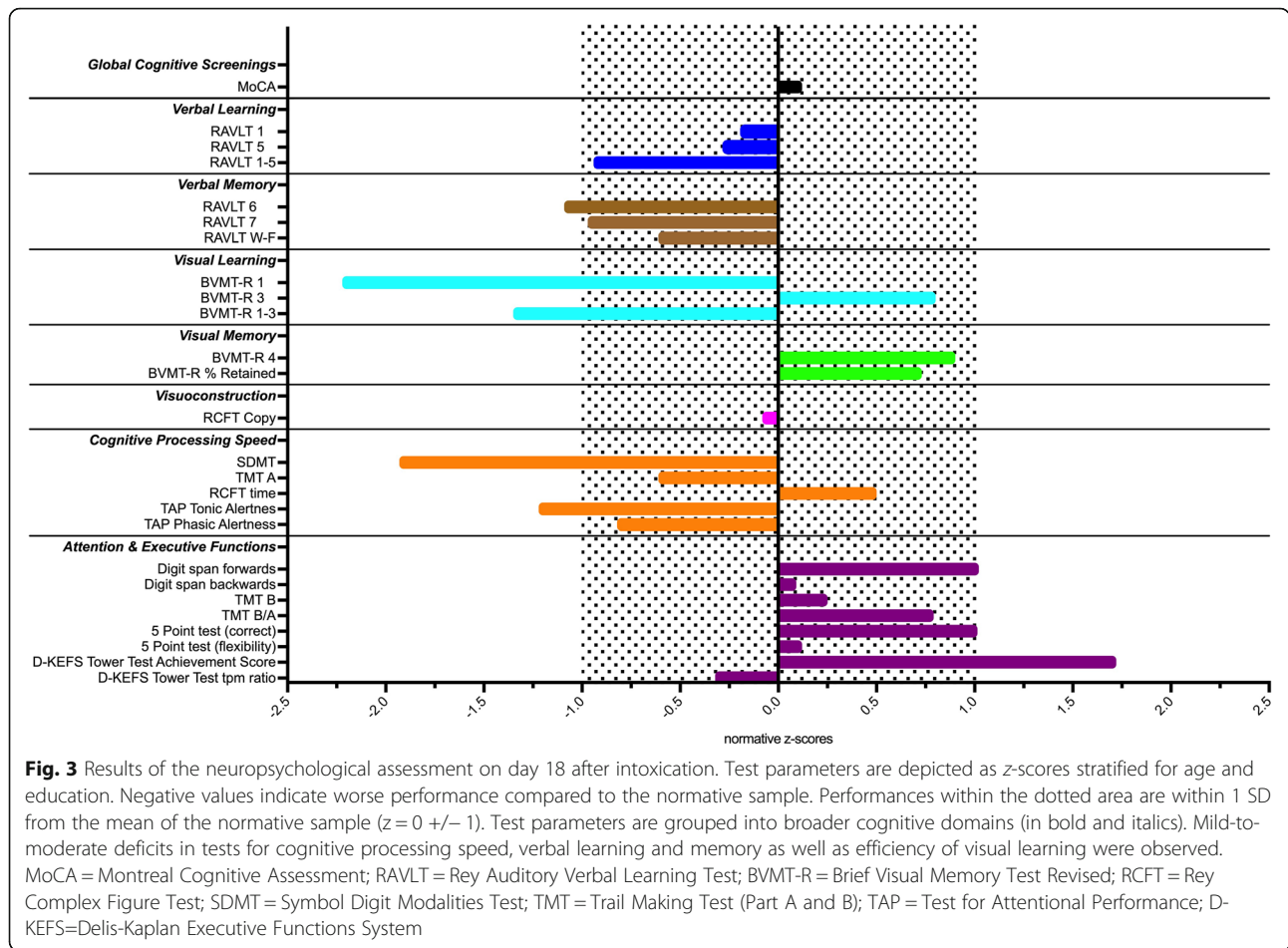
Here we report a case of intravenous methadone-induced CNS damage that is unusually bi-phasic in presentation when compared to the available literature. The initial stage was characterized by acute-onset focal neurological signs and localized signs of diffuse CNS toxicity including ischemic changes in MRI while the second stage showed a gradual progression of more widespread damage and cognitive deficits with signs of local immune activation. We thus speculate that the initial damage may have triggered secondary intrathecal inflammation.

Compared to previous case reports, which described oral consumption of methadone ranging from 1,28 mg/L [6] to 0,21 mg/L [7], the present patient consumed methadone at a considerably higher dose. This could explain why acute onset neurological changes have been rarely described while delayed onset of methadone-induced encephalopathy is well known [3]. Our patient also consumed methadone not orally but intravenously. Previous reports describe oral ingestion of methadone or oral or inhaled heroine leading to symmetrical leukoencephalopathy [8, 9]. We detected multifocal edema in the basal ganglia, capsula interna and both cerebellar hemispheres which may reflect direct toxicity of the drug or ischemic changes. Interestingly, the affected areas of the brain show highest expression of mu-opioid receptors and therefore potentially high susceptibility to opioid overstimulation [4]. In addition, the described pattern of the lesions showing restricted diffusion, no contrast enhancement and additional affection of deep gray nuclei and corpus callosum have been linked to toxic and metabolic disorders [10] and go beyond the typical presentation of acute toxic leukoencephalopathy [11]. Considering the possible differential diagnosis for toxic or metabolic disorders (e.g. carbon monoxide (CO), hepatic/hyperammonemic encephalopathy, hypoxic-ischemic encephalopathy (HIE), osmotic demyelination syndrome (extra-pontine myelinolysis) and the clinical features and history of the patient, methadone/opiate-induced encephalopathy along with hypoxic-ischemic encephalopathy are the two most probable causes for the described injury.

As the intravenous methadone consumption was only performed at a single point of time, one would expect a



**Fig. 2** Flow Cytometry on day 11 after intoxication. Red dots indicating values of the patients, boxplot based on 29 patients with somatoform disorder (mean and 2 SD). 1: Gated cerebral spinal fluid (CSF) results. 2: Gated peripheral blood (BP) results. 3: Total CSF results. 4: Gated CSF results



decrease in symptoms correlating with the damage seen in radiological imaging as well as CSF. Controversially, this case shows an improvement of clinical findings yet new lesions in the crura cerebri along with a shift in monocyte subtypes and a decrease in the CD56bright NK-cell-fraction in the control exams at day 11. Other cases confirm this clinical course of improved symptoms along with the increasing extent of reduced diffusion imaging after opiate-consumption [11]. However, even though others previously showed a correlation between opiate-related acute toxic leukoencephalopathy and elevation of CSF myelin basic protein suggesting myelin damage [12], the current case report may be the first to present a CSF leukocyte analysis suggesting a secondary inflammatory process.

Our hypothesis of a secondary inflammatory damage is based on surprisingly specific abnormalities in CSF cell composition characterized by a shift of monocytes from classical (CD14 + CD16-) to non-classical (CD14 + CD16+) and shift from CD56bright non killer (NK) cells to CD56dim NK cells. Notably, both CD14 + CD16+ - monocytes and CD56dim NK cells are known pro-inflammatory cell types which may play a role in the delayed

encephalopathy [13, 14]. To further support the hypothesis of secondary inflammatory damage against delayed toxic effects one could take a determination of myelin basic protein into consideration, as it has been shown that myelin basic protein can be elevated in acute toxic leukoencephalopathy [12].

We observed persistent neurocognitive impairments at day 18, especially in tests for cognitive processing speed, verbal and visual learning capacity as well as verbal memory recall. This pattern is in line with previous studies reporting a positive association of larger cognitive impairment with higher methadone doses (for a review see [5]). Associations between domain-specific cognitive impairments and local of brain lesions are however highly variable in young patients due to their usually high levels of cognitive reserve and related compensatory mechanisms [15].

In summary, intravenous methadone intoxication may lead to both primary metabolic-toxic as well as diffuse CNS toxicity that could be interpreted as secondary delayed and potentially inflammatory encephalopathy with persistent neurological deficits including neurocognitive impairment.



## Supplementary Information

The online version contains supplementary material available at <https://doi.org/10.1186/s12883-021-02108-9>.

**Additional file 1: Supplementary Figure 1.** Additional MRI imaging on day 1 and day 11. Timepoint 1 (Day 1 after intoxication): A: DWI sequence above the latter ventricle; B: FLAIR sequence above the latter ventricle Timepoint 2 (Day 11 after intoxication) FLAIR sequences: C: DWI sequence above the latter ventricle; D: FLAIR sequence above the latter ventricle.

**Additional file 2: Supplementary Table S1.** Raw Scores and z-scores of neuropsychological test results.

### Abbreviations

ADC: Apparent diffusion coefficient; BVMT-R: Brief visuospatial memory test-revised; CD: Cluster of differentiation; CNS: Central nervous system; CSF: Cerebrospinal fluid; dB: Decibel; D-KEFS: Delis-Kaplan executive function test; ECG: Electrocardiogram; EEG: Electroencephalogram; FACS: Fluorescence-activated cell scanning; FAST: Focused assessment with sonography for trauma; FLAIR: Fluid attenuated inversion recovery; MRI: Magnetic resonance imaging; NK: Non killer; RAVLT: Rey auditory verbal learning test; SD: Standard deviation; SDMT: Symbol digit modalities test; TAP: Test of attentional performance; TMT: Trail marking test; TOF: Time-of-flight

### Acknowledgements

Not applicable.

### Authors' contributions

JR and SEH analyzed and interpreted the patient data and contributed majorly in writing the manuscript. GMzH supervised the data analysis as well as the writing progress and gave guidance. MP contributed to the manuscript. ASM performed the flow cytometric analysis and contributed to the manuscript. NCL executed the neuropsychological examination and joined with AJ to generate the extended neurocognitive evaluation and graphs. AJ also contributed in writing the neuropsychological part of the manuscript. HW contributed significantly to the manuscript. The author(s) read and approved the final manuscript.

### Funding

Not applicable.

### Availability of data and materials

Not applicable.

### Ethics approval and consent to participate

Not applicable.

### Consent for publication

Written informed consent was obtained from the patient for publication of this case report and accompanying images. A copy of the written consent is available for review by the Editors-in-Chief of this journal.

### Competing interests

The authors declare that they have no competing interests.

### Author details

<sup>1</sup>Department of Neurology with Institute of Translational Neurology, University Hospital Muenster, Albert-Schweitzer-Campus 1, A1, 48149 Münster, Germany. <sup>2</sup>Department of Psychiatry, University of Münster, Münster, Germany.

Received: 24 November 2020 Accepted: 10 February 2021

Published online: 22 February 2021

### References

- Mills F, MacLennan SC, Devile CJ, Saunders DE. Severe cerebellitis following methadone poisoning. *Pediatr Radiol*. 2008. <https://doi.org/10.1007/s00247-007-0635-6>.

- Carroll I, Heritier Barras AC, Dirren E, et al. Delayed leukoencephalopathy after alprazolam and methadone overdose: a case report and review of the literature. *Clin Neurol Neurosurg*. 2012. <https://doi.org/10.1016/j.clineuro.2011.12.052>.
- Mittal M, Wang Y, Reeves A, Newell K. Methadone-induced delayed posthypoxic encephalopathy: clinical, radiological, and pathological findings. *Case Rep Med*. 2010. <https://doi.org/10.1155/2010/716494>.
- Zanin A, Masiero S, Severino MS, et al. A delayed methadone encephalopathy: clinical and neuroradiological findings. *J Child Neurol*. 2010. <https://doi.org/10.1177/0883073809343318>.
- Wang G, Wouldes T, Russell B. Methadone maintenance treatment and cognitive function: a systematic review. *Curr Drug Abuse Rev*. 2014. <https://doi.org/10.2174/18744737112059990020>.
- Cerese A, Leonini S, Bellini M, et al. Methadone-induced toxic leukoencephalopathy: diagnosis and follow-up by magnetic resonance imaging including diffusion-weighted imaging and apparent diffusion coefficient maps. *J Neuroimaging*. 2011;21:283–6. <https://doi.org/10.1111/j.1552-6569.2010.00530.x>.
- Rando J, Szari S, Kumar G, Lingadevaru H. Methadone overdose causing acute cerebellitis and multi-organ damage. *Am J Emerg Med*. 2016. <https://doi.org/10.1016/j.ajem.2015.06.032>.
- Kass-Hout T, Kass-Hout O, Darkhabani MZ, et al. "Chasing the dragon"-heroin-associated spongiform leukoencephalopathy. *J Med Toxicol*. 2011. <https://doi.org/10.1007/s13181-011-0139-5>.
- Shrot S, Poretti A, Tucker EW, et al. Acute brain injury following illicit drug abuse in adolescent and young adult patients: spectrum of neuroimaging findings. *Neuroradiol J*. 2017. <https://doi.org/10.1177/1971400917691994>.
- de Oliveira AM, Paulino MV, Vieira APF, et al. Imaging patterns of toxic and metabolic brain disorders. *Radiographics*. 2019;39:1672–95. <https://doi.org/10.1148/rg.2019190016>.
- McKinney AM, Kieffer SA, Paylor RT, et al. Acute toxic leukoencephalopathy: potential for reversibility clinically and on MRI with diffusion-weighted and FLAIR imaging. *Am J Roentgenol*. 2009;193:192–206. <https://doi.org/10.2214/AJR.08.1176>.
- Özütemiz C, Roshan SK, Kroll NJ, et al. Acute toxic leukoencephalopathy: etiologies, imaging findings, and outcomes in 101 patients. *Am J Neuroradiol*. 2019;40:267–75. <https://doi.org/10.3174/ajnr.A5947>.
- Kurioka A, Klenerman P, Willberg CB. Innate-like CD8+ T-cells and NK cells: converging functions and phenotypes. *Immunology*. 2018. <https://doi.org/10.1111/imm.12925>.
- Ziegler-Heitbrock L. The CD14+ CD16+ blood monocytes: their role in infection and inflammation. *J Leukoc Biol*. 2007;81:584–92. <https://doi.org/10.1189/jlb.0806510>.
- Stern Y. Cognitive reserve☆. *Neuropsychologia*. 2009;47:2015–28. <https://doi.org/10.1016/j.neuropsychologia.2009.03.004>.

## Publisher's Note

Springer Nature remains neutral with regard to jurisdictional claims in published maps and institutional affiliations.

### Ready to submit your research? Choose BMC and benefit from:

- fast, convenient online submission
- thorough peer review by experienced researchers in your field
- rapid publication on acceptance
- support for research data, including large and complex data types
- gold Open Access which fosters wider collaboration and increased citations
- maximum visibility for your research: over 100M website views per year

At BMC, research is always in progress.

Learn more [biomedcentral.com/submissions](https://biomedcentral.com/submissions)

