

# Gastroenterological and hepatic manifestations of patients with COVID-19, prevalence, mortality by country, and intensive care admission rate: systematic review and meta-analysis

Mohammad Shehab <sup>1</sup>, Fatema Alrashed,<sup>2,3</sup> Sameera Shuaibi,<sup>4</sup> Dhuha Alajmi,<sup>5</sup> Alan Barkun<sup>6</sup>

**To cite:** Shehab M, Alrashed F, Shuaibi S, *et al*. Gastroenterological and hepatic manifestations of patients with COVID-19, prevalence, mortality by country, and intensive care admission rate: systematic review and meta-analysis. *BMJ Open Gastro* 2021;**8**:e000571. doi:10.1136/bmjgast-2020-000571

► Additional material is published online only. To view, please visit the journal online (<http://dx.doi.org/10.1136/bmjgast-2020-000571>).

Received 10 November 2020  
Revised 1 February 2021  
Accepted 7 February 2021



© Author(s) (or their employer(s)) 2021. Re-use permitted under CC BY-NC. No commercial re-use. See rights and permissions. Published by BMJ.

For numbered affiliations see end of article.

## Correspondence to

Dr Mohammad Shehab;  
[dr\\_mshehab@hotmail.com](mailto:dr_mshehab@hotmail.com)

## ABSTRACT

**Background and aims** Patients infected with the SARS-CoV-2 usually report fever and respiratory symptoms. However, multiple gastrointestinal (GI) manifestations such as diarrhoea and abdominal pain have been described. The aim of this study was to evaluate the prevalence of GI symptoms, elevated liver enzymes and mortality of patients with COVID-19.

**Methods** A systematic review and meta-analysis of published studies that included a cohort of patients infected with SARS-CoV-2 were performed from 1 December 2019 to 15 December 2020. Data were collected by conducting a literature search using PubMed, Embase, Scopus, and Cochrane according to the Preferred Reporting Items for Systematic Reviews and Meta-Analyses guidelines. We analysed pooled data on the prevalence of individual GI symptoms and elevated liver enzymes and performed subanalyses to investigate the relationship between GI symptoms/elevated liver enzymes, geographical location, mortality, and intensive care unit (ICU) admission.

**Results** The available data of 78 798 patients positive for SARS-CoV-2 from 158 studies were included in our analysis. The most frequent manifestations were diarrhoea (16.5%, 95% CI 14.2% to 18.4%), nausea (9.7%, 95% CI 9.0% to 13.2%) and elevated liver enzymes (5.6%, 95% CI 4.2% to 9.1%). The overall mortality and GI mortality were 23.5% (95% CI 21.2% to 26.1%) and 3.5% (95% CI 3.1% to 6.2%), respectively. Subgroup analysis showed non-statistically significant associations between GI symptoms/elevated liver enzymes and ICU admissions (OR=1.01, 95% CI 0.55 to 1.83). The GI mortality was 0.9% (95% CI 0.5% to 2.2%) in China and 10.8% (95% CI 7.8% to 11.3%) in the USA.

**Conclusion** GI symptoms/elevated liver enzymes are common in patients with COVID-19. Our subanalyses showed that the presence of GI symptoms/elevated liver enzymes does not appear to affect mortality or ICU admission rate. Furthermore, the proportion of GI mortality among patients infected with SARS-CoV-2 varied based on geographical location.

## INTRODUCTION

In December 2019, China was faced with a new strain of coronavirus, novel coronavirus (2019 nCov). Within a short period of time, it manifested into a full pandemic.<sup>1</sup> It was first noticed by the innumerable cases of pneumonia that suddenly surged among local inhabitants in the province of Wuhan.<sup>2</sup> Soon, the virus was detected through sequencing, leading to it officially being renamed severe acute respiratory syndrome coronavirus 2 (SARS-CoV-2) by the International Committee on Taxonomy of Viruses.<sup>3</sup> The disease caused by SARS-CoV-2 was allocated the title of COVID-19 or 'coronavirus disease'.<sup>3</sup> Coronaviruses in general are single-stranded RNA viruses falling under the family of Coronaviridae, which also include Middle East respiratory syndrome coronavirus (MERS Cov) and SARS (SARS-CoV).<sup>4</sup> By the end of December 2020, more than 81 million cases of COVID-19 have officially been confirmed worldwide, and mortality from COVID-19 was more than 1 798 050 deaths worldwide.<sup>5</sup> In addition, new variants of SARS-CoV-2 have been discovered in the UK, South Africa, and other regions around the world.<sup>6</sup>

It has been established that the transmission of SARS-CoV-2 occurs from person to person through the upper airway tract (droplet infection) or through direct contact.<sup>7</sup> The virus can also be detected in saliva, urine, gastrointestinal (GI) tract and possibly through airborne spread.<sup>8,9</sup> The spectrum of symptoms attributable to SARS-CoV-2 includes fever, cough, myalgia, fatigue, and, to a lesser extent, headache. Patients may also be asymptomatic.<sup>10–12</sup> Diarrhoea, nausea and vomiting, as well as liver involvement have all been

reported in the literature.<sup>13 14</sup> In fact, GI involvement is plausible, given that ACE2, the major human cellular receptor for the SARS-CoV-2, is expressed in the GI tract, as well as in liver cells.<sup>15</sup> We thus conducted a systematic review of published GI symptoms and elevated liver enzymes associated with COVID-19 on the basis of disease severity, mortality, intensive care unit (ICU) admission, and geographical region. This will aid in understanding the magnitude of involvement of the GI tract and liver in patients with COVID-19.

## METHODS

### Search strategy

A systematic review was conducted using PubMed, Scopus, Cochrane, and Embase databases. Medical literature searches for human studies were performed from 1 December 2019 up to 15 December 2020. The key terms used for the literature search were ((“COVID-19” OR “COVID 2019” OR “severe acute respiratory syndrome coronavirus 2” OR “severe acute respiratory syndrome coronavirus 2” OR “2019 nCoV” OR “SARS-COV2” OR “2019nCoV” OR (“severe acute respiratory syndrome coronavirus 2” OR “SARS-COV2” AND “gastrointestinal” AND (“manifestations” OR “clinical characteristics”) OR (“gastrointestinal tract” OR (“gastrointestinal” AND “tract”) OR “gastrointestinal tract” OR (“gi” AND “tract”) OR (“fatality” or “Mortality”). In addition, a manual search of all review articles, editorials and retrieved original studies was also performed. All procedures used in this meta-analysis were consistent with the Preferred Reporting Items for Systematic Reviews and Meta-Analyses (PRISMA) guidelines and prespecified protocol, which described our method and analysis before data collection was initiated (see online supplemental material PRISMA checklist).

### Selection criteria and data extraction

Data were independently extracted by two investigators (MS and FA) and any discrepancies between the two authors were resolved through discussion. Inclusion and exclusion criteria were defined prior to the literature search. The inclusion criteria were (1) study type: case reports/case series (including chart reviews), prospective/retrospective cohort studies, case-control studies, cross-sectional studies and randomised controlled trials; (2) patient population: adult patients with COVID-19, inpatient or outpatient setting; and (3) outcome measured: at least one reported GI symptom or elevated liver enzyme, number of patients admitted to ICU, and number of deaths reported. In addition, systematic reviews and meta-analyses were also reviewed for any relevant studies.

For the purpose of this study, elevated liver enzyme defined as aspartate aminotransferase (AST) or alanine aminotransferase (ALT) value above the upper limit of normal of each study laboratory reference range. Furthermore, overall mortality was defined as the proportion of deaths among identified confirmed

COVID-19 cases in all studies that reported it. The number of deaths among patients experiencing GI symptoms/elevated liver enzymes was extracted and referred to as GI mortality.

Exclusion criteria were (1) review, opinion, abstracts from conferences, editorials, commentary articles, and review articles; (2) studies without data for retrieval; (3) duplicate studies; (4) asymptomatic patients with COVID-19; and (5) studies that did not report GI symptoms.

Data extraction was performed using Microsoft Excel. The following data were extracted:

1. Study: author, journal, date, country, number of patients, and study type.
2. Patients characteristics: mean age, ethnicity, gender, and comorbidities.
3. Number of reported deaths in all studies.
4. Number of patients admitted to the ICU.
5. Number of patients who experienced the following GI symptoms/elevated liver enzymes: abdominal pain, diarrhoea, nausea, anorexia, loss of taste, AST or ALT above the upper limit of normal of each study laboratory reference range.

### Risk of bias and certainty of evidence

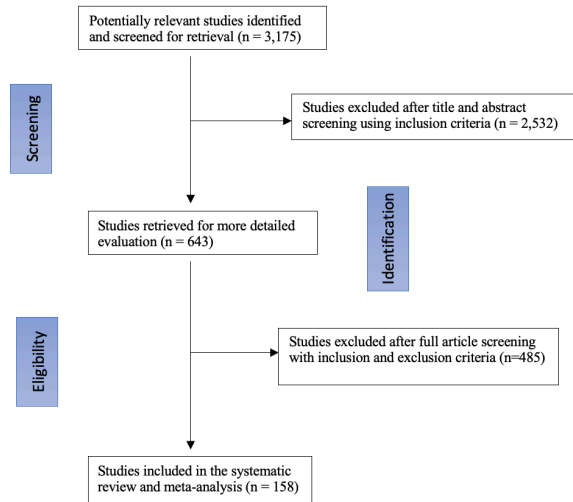
The Methodical Index for Non-randomized Studies (MINORS)<sup>16</sup> was used to assess bias risk. In addition, risk of bias was assessed based on four domains: selection, ascertainment, causality, and reporting. An overall judgement of risk of bias was made based on factors deemed to be most critical for the systematic review (selection criteria, ascertainment of outcome, and follow-up duration).

### Statistical analysis

Our primary analysis focused on assessing the weighted pooled prevalence of GI symptoms/elevated liver enzymes in patients with COVID-19 infection, occurring any time during the course of illness. We also conducted subanalyses that looked at the association between GI symptoms/elevated liver enzymes and mortality as well as ICU admission. Categorical variables were described as count (%). Continuous variables were described using mean (SD) if they are normally distributed, median (IQR) if they are not. We pooled the single-arm event rates using a random effects method, and we measured heterogeneity within our studies using the  $I^2$  statistic. Subanalyses were described and tested using ORs and 95% CIs to determine statistical significance. STATA V.16 was used to calculate ORs and their respective 95% CI and to create Forest and box plots.

### Sensitivity analysis

To examine the effect of the quality of studies on our results, we performed a sensitivity analysis on the prevalence of GI symptoms/elevated liver enzymes by excluding low-quality studies. To do so, we used the modified Newcastle-Ottawa Quality Assessment Scale for non-randomised studies.<sup>17</sup> A study with a score of 0–3



**Figure 1** Flow diagram for study selection.

was classified as a low-quality study. On the other hand, studies that scored 4 or above were included in the analysis.

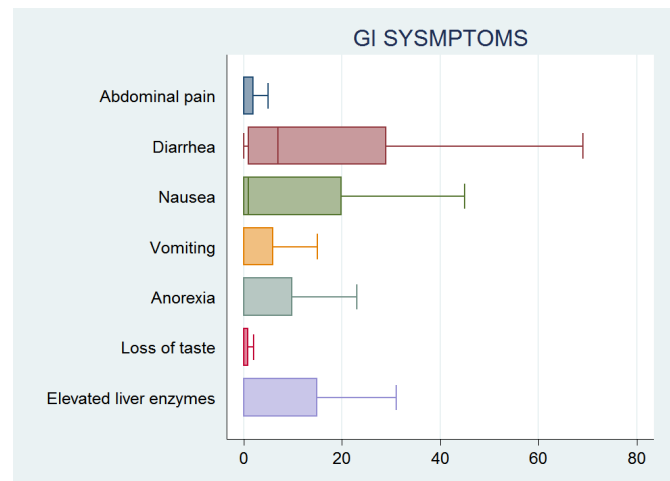
## RESULTS

### Research selection and quality assessment

Overall, 158 studies (online supplemental table 1) from 3175 potentially relevant citations were included in the analysis (figure 1). Most of the included studies were single arm only; very few studies included comparator groups. Furthermore, outcome assessors in all 158 studies were not blinded. Both inpatient and outpatient studies were included. The risk of evidence imprecision was rated as very serious, given that the included studies were all observational studies. Overall, all included studies were rated as having very serious risk of bias because they lacked a control group and had a high risk of confounding and selection bias (online supplemental table 2).

### Clinical data

This systematic review included 158 studies<sup>2-48 12-14 16 18-147</sup> with a total of 78 798 patients that tested positive for SARS-CoV-2 and were included in the analysis. The mean patient age was 55.6 years ( $\pm 14$ , 95% CI 48 to 57.3) and 45.2% of the patients were men. Most patients had several comorbidities, the most common being hypertension (28.7%, 95% CI 21.3% to 29.1%), diabetes mellitus (17.4%, 95% CI 13.0% to 19.2%), and cardiovascular diseases (15.7%, 95% CI 13.3% to 17.1%). GI symptoms included nausea, vomiting, abdominal pain, loss of taste, anorexia and diarrhoea (figure 2). Heterogeneity statistic  $I^2$  is 95%, which signifies a significant heterogeneity among our studies. The most common reported manifestation among GI symptoms/elevated liver enzymes was diarrhoea (online supplemental figure 1). Specifically, GI symptoms/elevated liver enzymes of patients



**Figure 2** Box plots showing the distribution and proportion of GI symptoms/elevated liver enzymes in patients with COVID-19. GI, gastrointestinal.

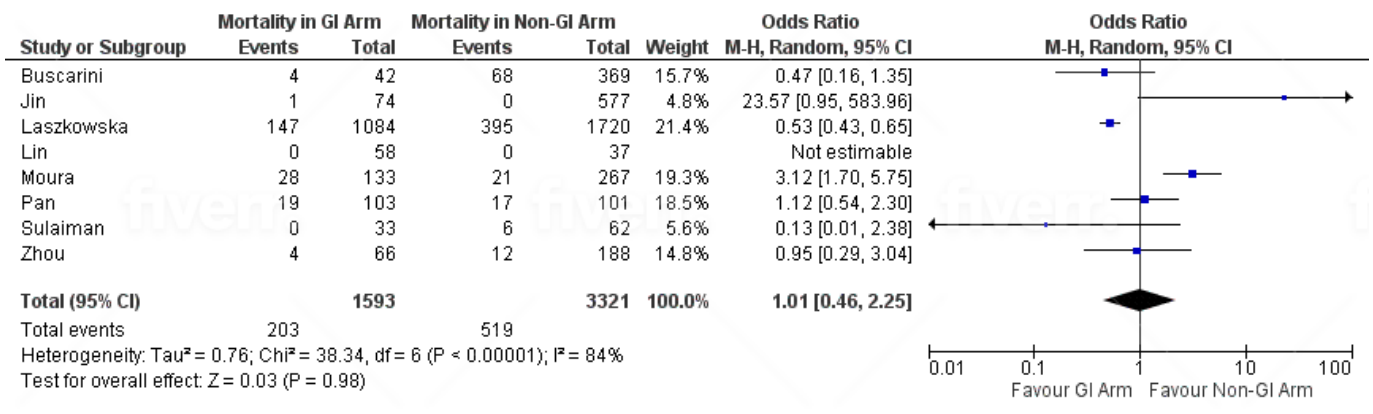
infected with SARS-CoV-2 are diarrhoea (16.5%, 95% CI 14.2% to 18.4%), nausea (9.7%, 95% CI 9.0% to 13.2%), anorexia or loss of appetite (1.6%, 95% CI 1.2% to 5.1%), vomiting (1.5%, 95% CI 5.1% to 8.0%), abdominal pain (4.5%, 95% CI 3.1% to 7.3%), loss of taste (1.3%, 95% CI 1.1% to 4.1%), and elevated liver enzymes (5.6%, 95% CI 4.2% to 9.1%) (online supplemental table 3).

### Sensitivity analysis

The sensitivity analysis included 52 studies (online supplemental tables 4 and 5). The results did not differ from our main analysis. Among the GI manifestations experienced by patients with COVID-19, diarrhoea (16.6%, 95% CI 12.1% to 17.3%) was still the most common symptom, followed by nausea (9.9%, 95% CI 8.2% to 11.7%). The proportion of patients experiencing loss of taste was 4.7% (95% CI 3.8% to 5.9%). The percentage of patients experiencing elevated liver enzymes was 1.9% (95% CI 1.3% to 3.4%).

### Mortality and geographical variation

A total of 83 studies reported mortality. Of those, 82 studies reported mortality as the number of deaths at the time of the study. Only one study reported mortality as death over 30 days.<sup>143</sup> The overall prevalence of overall mortality and GI mortality were 23.5% (95% CI 21.2% to 26.1%) and 3.5% (95% CI 3.1% to 6.2%), respectively (online supplemental tables 6 and 7). The subgroup analysis included eight studies<sup>19 20 57 110 136 139 141 143</sup> that directly compared the number of deaths in patients with and without GI symptoms/elevated liver enzymes. In this analysis, the number of patients who experienced GI symptoms/elevated liver enzymes and those who did not were 1593 and 3321, respectively. The results showed that patients with GI symptoms/elevated liver enzymes were not more likely to die compared with those who did not, with a statistically insignificant pooled odds of patients of 1.01 (95% CI 0.46 to 2.25) (figure 3).

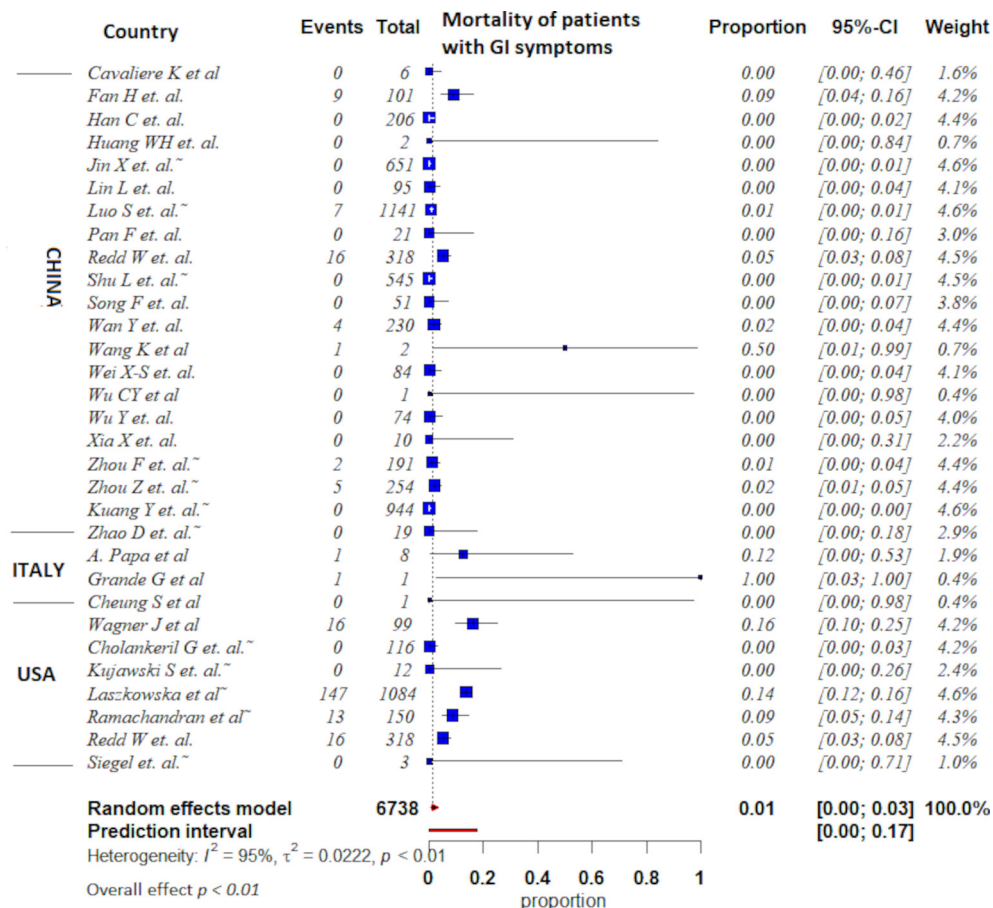


**Figure 3** Forest plot of GI mortality in patients with COVID-19, showing no significant difference in the pooled odds of patients with GI symptoms/elevated liver enzymes and those without. GI, gastrointestinal.

Moreover, out of the 158 studies, a total of 42 studies reported mortality in patients with GI symptoms/elevated liver enzymes based on their geographical location (figure 4). This analysis showed that 44 out of 4946 patients (0.9%) in China died (95% CI 0.5 to 2.2), whereas 192 out of 1783 patients (10.8%) in the USA died (95% CI 7.8 to 11.3). In addition, 2 out of 9 patients (22.2%) in Italy died, while 28 out of 400 patients (7%) in Brazil died. Furthermore, three studies from Taiwan, Korea, and Japan reported zero GI mortality (table 1).

### ICU admission rate

Five studies<sup>22 85 139 141 148</sup> reported differences in ICU admissions among patients manifesting GI symptoms/elevated liver enzymes and patients who did not. The total number of patients with GI symptoms/elevated liver enzymes who were admitted to the ICU was 1282, and the number of patients who did not experience GI symptoms/elevated liver enzymes and were admitted to the ICU was 2512. No statistically significant difference in



**Figure 4** Forest plot of GI mortality in patients with COVID-19 who are experiencing GI symptoms/elevated liver enzymes in three different countries. GI, gastrointestinal.



**Table 1** GI mortality by geographical location

Study	Patients (total n)	Mortality in patients with GI symptoms	Country
Fan <i>et al</i> <sup>148</sup>	101	9	China
Han <i>et al</i>	206	0	China
Huang <i>et al</i>	2	0	China
Kuang <i>et al</i>	944	0	China
Shu <i>et al</i>	545	0	China
Jin <i>et al</i>	651	0	China
Lin <i>et al</i>	95	0	China
Pan <i>et al</i>	21	0	China
Zhao <i>et al</i>	19	0	China
Redd <i>et al</i>	318	16	China
Luo <i>et al</i>	1141	7	China
Song <i>et al</i>	51	0	China
Wan <i>et al</i>	230	4	China
Wei <i>et al</i>	84	0	China
Wu <i>et al</i>	74	0	China
Zhou <i>et al</i>	191	2	China
Zhou <i>et al</i>	254	5	China
Xia <i>et al</i>	10	0	China
Cavaliere <i>et al</i>	6	0	China
Wu <i>et al</i>	1	0	China
Wang <i>et al</i>	2	1	China
<b>Total China</b>	<b>4946</b>	<b>44</b>	<b>0.9%</b>
Ramachandran <i>et al</i>	150	13	USA
Wagner <i>et al</i>	99	16	USA
Cheung <i>et al</i>	1	0	USA
Cholankeril <i>et al</i>	116	0	USA
Kujawski <i>et al</i>	12	0	USA
Redd <i>et al</i>	318	16	USA
Siegel <i>et al</i>	3	0	USA
Laszkowska <i>et al</i>	1084	147	USA
<b>Total USA</b>	<b>1783</b>	<b>192</b>	<b>10.8%</b>
Grande <i>et al</i>	1	1	Italy
Papa <i>et al</i>	8	1	Italy
<b>Total Italy</b>	<b>9</b>	<b>2</b>	<b>22.2%</b>
Hsieh <i>et al</i>	2	0	Taiwan
Tabata <i>et al</i>	104	0	Japan
<b>Moura <i>et al</i></b>	<b>400</b>	<b>28</b>	<b>Brazil (7%)</b>
Wahab <i>et al</i>	1	0	Denmark
Dietrich <i>et al</i>	1	0	Germany
Kandasamy <i>et al</i>	1	0	India
Sulaiman <i>et al</i>	140	0	Iraq
Hassani <i>et al</i>	2	1	Iran
Khader <i>et al</i>	1	0	Qatar
Gulen <i>et al</i>	1	0	Turkey
Kim <i>et al</i>	28	0	South Korea

ICU admission rate was noted between those who experienced GI symptoms/elevated liver enzymes and those who did not. The pooled proportion was 1.01 (95% CI 0.55 to 1.83) (figure 5).

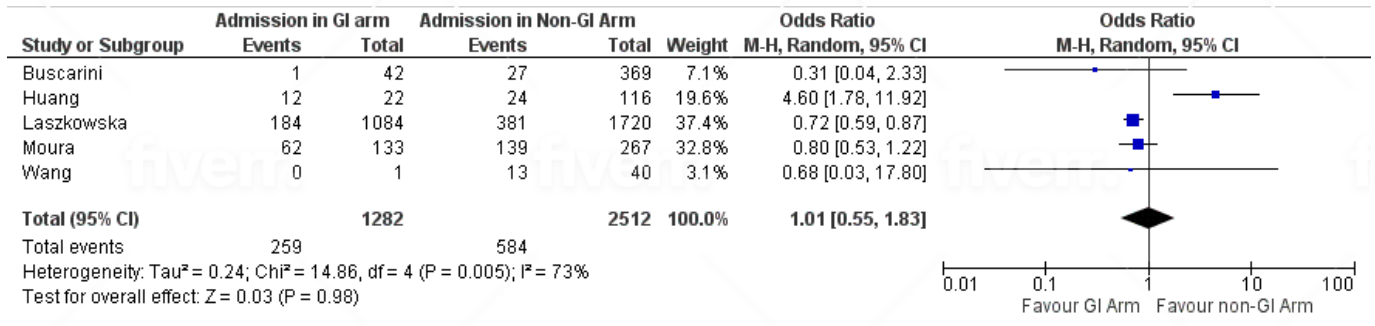
## DISCUSSION

This meta-analysis of 78 798 patients with COVID-19 found that GI symptoms/elevated liver enzymes are common in patients infected with SARS-CoV-2. Subgroup analysis found that no association between the presence of GI symptoms/elevated liver enzymes and mortality or ICU admission, which is similar to the finding of other meta-analyses.<sup>149 150</sup>

GI symptoms including abdominal pain, diarrhoea, nausea, vomiting, loss of appetite, loss of taste and elevated liver enzyme are among the presenting symptoms or laboratory abnormalities of SARS-CoV-2 infection found in this study. Diarrhoea was the most common GI symptom; this is particularly important because previous studies have shown that patients with diarrhoea on presentation have a higher stool RNA positivity and viral load than those without.<sup>22 36 151</sup> One study showed that 44 of 153 patients with COVID-19 tested positive for the virus in the stools.<sup>148</sup> In addition, a report of a patient with COVID-19 with positive faecal but negative pharyngeal and sputum viral tests has been described.<sup>33</sup> Moreover, a meta-analysis concluded that SARS-CoV-2 is commonly present in stool samples or anal swabs in which the virus can persist for a long period after respiratory samples become negative and that the virus may be viable.<sup>152</sup> This may imply that faecal oral route is a possible route of SARS-CoV-2 transmission.

The possibility of faecal oral transmission of SARS-CoV-2 emphasises the importance of frequent and proper hand hygiene. This is important in every clinical setting, but especially in low-resource areas with poor sanitation.<sup>38</sup> Intuitively, proper handling of the excreta of patients with COVID-19 should still be strongly enforced, and sewage from hospitals should also be properly disinfected. The presence of the virus in the digestive tract also raises the concerns of COVID-19 infection in patients with established GI conditions, as well as potential faecal microbiota transplant donors.<sup>148</sup> Nevertheless, the unknown effect of COVID-19 on patients with pre-existing GI diseases and its influence on treatment and outcome is a cause for concern. These implications warrant further investigation. The American Gastroenterological Association and joint society recommend the use of enhanced personal protective equipment, including the use of N95 (or N99) masks instead of surgical masks, for healthcare workers performing upper or lower GI procedures regardless of COVID-19 status.<sup>35</sup>

It is believed that the prevalence of GI symptoms is underestimated because the majority of studies included in our study reported GI symptoms only on the day of admission but not throughout the disease course. Furthermore, many earlier studies did not report on



**Figure 5** Forest plot showing odd ratio (OR) of intensive care unit admissions in patients with COVID-19 with and without GI symptoms/elevated liver enzymes. GI, gastrointestinal.

other GI symptoms except for diarrhoea.<sup>22</sup> Based on these findings, clinicians must be aware that digestive symptoms, such as diarrhoea, may be a presenting feature of COVID-19 that can arise before respiratory symptoms and, on rare occasions, may be the only presenting manifestation of COVID-19.<sup>33</sup>

The pooled analysis showed that the overall mortality and GI mortality were 23.5% and 3.5%, respectively. However, it is important to emphasise that reporting of COVID-19 mortality in each country varies.<sup>153</sup> Some countries do not depend on the availability of confirmed laboratory tests; instead, both probable and confirmed cases are used when calculating COVID-19 mortality.<sup>154</sup>

In this meta-analysis, a subanalysis of mortality in patients with GI symptoms/elevated liver enzymes varied between countries. This difference in GI mortality can be attributed to several reasons. Differences in reporting cases, case definition, and the mortality measure used might have a great role in this geographical variation. The available mortality data mostly reported as case fatality rate, which measures the number of deaths out of all confirmed cases.<sup>155</sup> Furthermore, using case fatality rate is influenced by reporting and testing strategies in each country, where countries that do not have good reporting or intensive testing might miss a lot of confirmed cases and eventually overestimate mortality.<sup>153</sup> In addition, it is well known that comorbidities increase the risk of death from COVID-19,<sup>154</sup> and countries with the highest burden of chronic diseases had the highest COVID-19 mortality. Small sample size of the published GI mortality reports of some countries is another factor that can lead to inaccurate presentation of the actual GI mortality.

Our study did not show higher GI mortality among patients manifesting GI symptoms/elevated liver enzymes. However, any possible true difference in mortality may be worth further investigation among better defined patients with COVID-19 subgroups with GI symptoms/elevated liver enzymes because one study showed that prevalence of severe disease was more common in patients who had GI symptoms than those who did not.<sup>156</sup> Our meta-analysis did not find a statistically significant association between patients with GI symptoms/elevated

liver enzymes and ICU admission. However, to investigate such an association, it is important to consider other causes of elevated liver enzymes in patients admitted to ICU such as sepsis, hypoperfusion, hepatotoxic drugs, and parenteral nutrition.<sup>157</sup>

### Strengths and limitations

Our study has several strengths. This is one of the more recent meta-analyses that summarises the literature on COVID-19 and the prevalence of overall and individual GI manifestations.<sup>149 158–161</sup> The large patient population and comprehensive inclusion of 158 studies allow a more precise estimation of the prevalence of GI symptoms/elevated liver enzymes associated with COVID-19. Moreover, our search included studies over 1-year period, from 1 December 2019 up to 15 December 2020, which makes it more up-to-date and more inclusive of the recent evidence. Furthermore, our meta-analysis included studies from different countries and regions.

This study, however, is subject to some limitations. Most of the studies we base our analyses on are observational, single-arm cohorts. The lack of control groups and comparison arms can lead to bias due to confounding. Additionally, regarding mortality among patients with COVID-19, most studies reported mortality at the time of the study. In other words, studies did not report mortality over a specific period of time. Furthermore, most studies reported patients with COVID-19 who have been admitted to hospital, who are more likely to have severe disease, resulting in under-representation of patients with milder disease.

### CONCLUSION

In this meta-analysis, we summarise the recent reports of GI symptoms/elevated liver enzymes among patients infected with SARS-CoV-2. GI symptoms/elevated liver enzymes are commonly observed in patients with COVID-19; therefore, clinicians should be aware that diarrhoea and nausea can be the only manifestations of patients with COVID-19. Our subanalysis showed that GI mortality among patients infected with SARS-CoV-2 varied based

on geographical location. We also could not find a statistically significant association between ICU admission in patients with GI symptoms/elevated liver enzymes compared with those without GI symptoms/elevated liver enzymes. However, further investigation is warranted to better assess this possible association.

#### Author affiliations

- <sup>1</sup>Department of Internal Medicine, Mubarak Al-Kabeer Hospital, Jabreyah, Kuwait  
<sup>2</sup>Department of Pharmacy Practice, Massachusetts College of Pharmacy and Health Sciences, Boston, Massachusetts, USA  
<sup>3</sup>Department of Pharmacy Practice, Kuwait University, Jabreyah, Kuwait  
<sup>4</sup>Department of Internal Medicine, Mubarak Al-Kabeer Hospital, Jabreyah, Kuwait  
<sup>5</sup>Department of Internal Medicine, Farwaniya Hospital, Farwaniya, Kuwait  
<sup>6</sup>Department of Internal Medicine, McGill University, Montreal, Québec, Canada

**Twitter** Mohammad Shehab @drmohamadshahab

**Acknowledgements** We acknowledge and thank all health care workers and front liners around the globe for their hard work and sacrifices made during this pandemic.

**Contributors** MS: study concept and design, acquisition of data, analysis and interpretation of data, drafting of the manuscript, critical revision of the manuscript for important intellectual content, statistical analysis, and submission of the manuscript. FA: acquisition of data, analysis and interpretation of data, drafting of the manuscript. SS: acquisition of data and drafting of the manuscript. DA: acquisition of data and drafting of the manuscript. AB: critical revision of the manuscript for important intellectual content, statistical analysis, study supervision; he is also responsible for the overall work as a guarantor.

**Funding** The authors have not declared a specific grant for this research from any funding agency in the public, commercial or not-for-profit sectors.

**Competing interests** None declared.

**Patient consent for publication** Not required.

**Provenance and peer review** Not commissioned; externally peer reviewed.

**Data availability statement** All data generated or analysed during this study are included in this published article (and its supplementary information files).

**Supplemental material** This content has been supplied by the author(s). It has not been vetted by BMJ Publishing Group Limited (BMJ) and may not have been peer-reviewed. Any opinions or recommendations discussed are solely those of the author(s) and are not endorsed by BMJ. BMJ disclaims all liability and responsibility arising from any reliance placed on the content. Where the content includes any translated material, BMJ does not warrant the accuracy and reliability of the translations (including but not limited to local regulations, clinical guidelines, terminology, drug names and drug dosages), and is not responsible for any error and/or omissions arising from translation and adaptation or otherwise.

**Open access** This is an open access article distributed in accordance with the Creative Commons Attribution Non Commercial (CC BY-NC 4.0) license, which permits others to distribute, remix, adapt, build upon this work non-commercially, and license their derivative works on different terms, provided the original work is properly cited, appropriate credit is given, any changes made indicated, and the use is non-commercial. See: <http://creativecommons.org/licenses/by-nc/4.0/>.

#### ORCID iD

Mohammad Shehab <http://orcid.org/0000-0003-2084-3956>

## REFERENCES

- Centers for Disease Control and Prevention. Coronavirus disease 2019 (COVID-19), 2020. Available: <https://www.cdc.gov/coronavirus/2019-ncov/cdcresponse/about-COVID-19.html#:~:text=On%20February%2011%2C%202020%2C%20the,and%20'D'%20for%20disease> [Accessed 25 Dec 2020].
- Lu R, Zhao X, Li J, et al. Genomic characterisation and epidemiology of 2019 novel coronavirus: implications for virus origins and receptor binding. *Lancet* 2020;395:565–74.
- Wu Z, McGoogan JM. Characteristics of and Important Lessons From the Coronavirus Disease 2019 (COVID-19) Outbreak in China: Summary of a Report of 72 314 Cases From the Chinese Center for Disease Control and Prevention. *JAMA* 2020;323:1239–42.
- Kang S, Peng W, Zhu Y, et al. Recent progress in understanding 2019 novel coronavirus (SARS-CoV-2) associated with human respiratory disease: detection, mechanisms and treatment. *Int J Antimicrob Agents* 2020;55:105950.
- World Health Organization. Coronavirus Disease (COVID-19) – World Health Organization [online]. Available: [https://www.who.int/emergencies/diseases/novel-coronavirus-2019?gclid=Cj0KCQiAuJb\\_BRDJARIsAKkycUI7HGvUu5\\_W-YzjcWARo-V5Uy3YreqHt7\\_FFvJpd1hcYcZeWxeH20kaAswjEALw\\_wcB](https://www.who.int/emergencies/diseases/novel-coronavirus-2019?gclid=Cj0KCQiAuJb_BRDJARIsAKkycUI7HGvUu5_W-YzjcWARo-V5Uy3YreqHt7_FFvJpd1hcYcZeWxeH20kaAswjEALw_wcB) [Accessed 31 Dec 2020].
- World Health Organization. SARS-CoV-2 variants, 2020. Available: <https://www.who.int/csr/don/31-december-2020-sars-cov-2-variants/en/> [Accessed 05 Jan 2021].
- World Health Organization. Who coronavirus disease (COVID-19) Dashboard, 2020. Available: [https://covid19.who.int/?gclid=CjwKCAjwiMj2BRBFiEiwAYftbCs-zYNg4rwUJqKD946CSFHwJgC2YP9erGKVDphwwdudJsa3uWTxaBoCdLUQAvD\\_BwE](https://covid19.who.int/?gclid=CjwKCAjwiMj2BRBFiEiwAYftbCs-zYNg4rwUJqKD946CSFHwJgC2YP9erGKVDphwwdudJsa3uWTxaBoCdLUQAvD_BwE) [Accessed 05 Jun 2020].
- Luo C, Yao L, Zhang L, et al. Possible transmission of severe acute respiratory syndrome coronavirus 2 (SARS-CoV-2) in a public Bath center in Huai'an, Jiangsu Province, China. *JAMA Netw Open* 2020;3:e204583.
- Guan W-J, Ni Z-Y, Hu Y, et al. Clinical characteristics of coronavirus disease 2019 in China. *N Engl J Med* 2020;382:1708–20.
- Morawska L, Milton DK. It is time to address airborne transmission of COVID-19. *Clinical Infectious Diseases* 2020:ciaa939.
- Bai Y, Yao L, Wei T, et al. Presumed asymptomatic carrier transmission of COVID-19. *JAMA* 2020;323:1406–7.
- Epidemiology Working Group for NCIP Epidemic Response, Chinese Center for Disease Control and Prevention. [The epidemiological characteristics of an outbreak of 2019 novel coronavirus diseases (COVID-19) in China]. *Zhonghua Liu Xing Bing Xue Za Zhi* 2020;41:145–51.
- Lai C-C, Liu YH, Wang C-Y, et al. Asymptomatic carrier state, acute respiratory disease, and pneumonia due to severe acute respiratory syndrome coronavirus 2 (SARS-CoV-2): facts and myths. *J Microbiol Immunol Infect* 2020;53:404–12.
- Zu ZY, Jiang MD, Xu PP, et al. Coronavirus disease 2019 (COVID-19): a perspective from China. *Radiology* 2020;296:E15–25.
- Guan W-jie, Ni Z-yi, Hu Y, et al. Clinical characteristics of 2019 novel coronavirus infection in China. *MedRxiv*2020.
- Slim K, Nini E, Forestier D, et al. Methodological index for non-randomized studies (minors): development and validation of a new instrument. *ANZ J Surg* 2003;73:712–6.
- Wells G, Shea B, O'Connell D. The Newcastle-Ottawa scale (NOS) for assessing the quality if nonrandomised studies in meta-analyses, 2014. Available: [http://www.ohri.ca/programs/clinical\\_epidemiology/oxford.asp](http://www.ohri.ca/programs/clinical_epidemiology/oxford.asp)
- Hung IFN, Cheng VCC, Wu AKL, et al. Viral loads in clinical specimens and SARS manifestations. *Emerg Infect Dis* 2004;10:1550–7.
- Lin L, Jiang X, Zhang Z, et al. Gastrointestinal symptoms of 95 cases with SARS-CoV-2 infection. *Gut* 2020;69:997–1001.
- Pan L, Mu M, Yang P, et al. Clinical characteristics of COVID-19 patients with digestive symptoms in Hubei, China: a descriptive, cross-sectional, multicenter study. *Am J Gastroenterol* 2020;115:766–73.
- Zhou Z, Zhao N, Shu Y, et al. Effect of gastrointestinal symptoms in patients with COVID-19. *Gastroenterology* 2020;158:2294–7.
- Huang C, Wang Y, Li X, et al. Clinical features of patients infected with 2019 novel coronavirus in Wuhan, China. *Lancet* 2020;395:497–506.
- Wang D, Hu B, Hu C, et al. Clinical characteristics of 138 hospitalized patients with 2019 novel Coronavirus-Infected pneumonia in Wuhan, China. *JAMA* 2020;323:1061–9.
- Benvenuto D, Giovanetti M, Salemi M, et al. The global spread of 2019-nCoV: a molecular evolutionary analysis. *Pathog Glob Health* 2020;114:64–7.
- World Health Organization. Who coronavirus disease (COVID-19) Dashboard, 2020. Available: [covid19.who.int/?gclid=CjwKCAjwiMj2BRBFiEiwAYftbCs-zYNg4rwUJqKD946CSFHwJgC2YP9erGKVDphwwdudJsa3uWTxaBoCdLUQAvD\\_BwE](https://covid19.who.int/?gclid=CjwKCAjwiMj2BRBFiEiwAYftbCs-zYNg4rwUJqKD946CSFHwJgC2YP9erGKVDphwwdudJsa3uWTxaBoCdLUQAvD_BwE)
- Morawska L, Milton DK. It is time to address airborne transmission of coronavirus disease 2019 (COVID-19). *Clin Infect Dis* 2020;71:2311–3.
- Bai Y, Yao L, Wei T, et al. Presumed asymptomatic carrier transmission of COVID-19. *JAMA* 2020;323:1406–7.
- Guan W-jie, Ni Z-yi, Hu Y. Clinical characteristics of 2019 novel coronavirus infection in China. *MedRxiv*2020.



- 29 Qi F, Qian S, Zhang S, *et al*. Single cell RNA sequencing of 13 human tissues identify cell types and receptors of human coronaviruses. *Biochem Biophys Res Commun* 2020;526:135–40.
- 30 Hung IFN, Cheng VCC, Wu AKL, *et al*. Viral loads in clinical specimens and SARS manifestations. *Emerg Infect Dis* 2004;10:1550–7.
- 31 Holshue ML, DeBolt C, Lindquist S, *et al*. First case of 2019 novel coronavirus in the United States. *N Engl J Med* 2020;382:929–36.
- 32 Xiao F, Tang M, Zheng X, *et al*. Evidence for gastrointestinal infection of SARS-CoV-2. *Gastroenterology* 2020;158:1831–3.
- 33 Chen L, Lou J, Bai Y, *et al*. COVID-19 disease with positive fecal and negative pharyngeal and sputum viral tests. *Am J Gastroenterol* 2020;115:790.
- 34 Liang W, Feng Z, Rao S, *et al*. Diarrhoea may be underestimated: a missing link in 2019 novel coronavirus. *Gut* 2020;69:1141–3.
- 35 American college of gastroenterology. Joint Gi Society statement: use of personal protective equipment in Gi endoscopy, 2020. Available: <https://gi.org/2020/04/01/joint-gi-society-message-on-ppe-during-COVID-19/>
- 36 Zhou J, Li C, Zhao G, *et al*. Human intestinal tract serves as an alternative infection route for middle East respiratory syndrome coronavirus. *Sci Adv* 2017;3:eaa04966.
- 37 Metlay JP, Waterer GW, Long AC, *et al*. Diagnosis and treatment of adults with community-acquired pneumonia. An official clinical practice guideline of the American thoracic Society and infectious diseases Society of America. *Am J Respir Crit Care Med* 2019;200:e45–67.
- 38 Cheung KS, Hung IFN, Chan PPY, *et al*. Gastrointestinal manifestations of SARS-CoV-2 infection and virus load in fecal samples from a Hong Kong cohort: systematic review and meta-analysis. *Gastroenterology* 2020;159:81–95.
- 39 PaC A, Chen H. Clinical features of 2019 novel coronavirus pneumonia presented gastrointestinal symptoms but without fever onset. *Lancet* 2020 <https://ssrn.com/abstract=3532530>
- 40 Chan JF-W, Yuan S, Kok K-H, *et al*. A familial cluster of pneumonia associated with the 2019 novel coronavirus indicating person-to-person transmission: a study of a family cluster. *Lancet* 2020;395:514–23.
- 41 Chang D, Lin M, Wei L, *et al*. Epidemiologic and clinical characteristics of novel coronavirus infections involving 13 patients outside Wuhan, China. *JAMA* 2020;323:1092.
- 42 Chen N, Zhou M, Dong X, *et al*. Epidemiological and clinical characteristics of 99 cases of 2019 novel coronavirus pneumonia in Wuhan, China: a descriptive study. *The Lancet* 2020;395:507–13.
- 43 Chen Q, Quan B, Li X, *et al*. A report of clinical diagnosis and treatment of nine cases of coronavirus disease 2019. *J Med Virol* 2020;92:683–7.
- 44 Chen Q, Zheng Z, Zhang C, *et al*. Clinical characteristics of 145 patients with corona virus disease 2019 (COVID-19) in Taizhou, Zhejiang, China. *Infection* 2020;48:543–51.
- 45 Cholankeril G, Podboy A, Aivaliotis VI, *et al*. High prevalence of concurrent gastrointestinal manifestations in patients with severe acute respiratory syndrome coronavirus 2: early experience from California. *Gastroenterology* 2020;159:775–7.
- 46 COVID-19 National Emergency Response Center, Epidemiology and Case Management Team, Korea Centers for Disease Control and Prevention. Early epidemiological and clinical characteristics of 28 cases of coronavirus disease in South Korea. *Osong Public Health Res Perspect* 2020;11:8–14.
- 47 COVID-19 National Incident Room Surveillance Team. COVID-19, Australia: epidemiology report 7 (reporting week ending 19:00 AEDT 14 March 2020). *Commun Dis Intell* 2020;44.
- 48 Fan H, Zhang L, Huang B. Retrospective analysis of clinical features in 101 death cases with COVID-19 2020.
- 49 Fernández-Ruiz M, Andrés A, Loinaz C, *et al*. COVID-19 in solid organ transplant recipients: a single-center case series from Spain. *Am J Transplant* 2020;20:1849–58.
- 50 Gritti G, Raimondi F, Ripamonti D. Use of siltuximab in patients with COVID-19 pneumonia requiring ventilatory support. *MedRxiv* 2020.
- 51 Hajifathalian K, Krisko T, Mehta A, *et al*. Gastrointestinal and hepatic manifestations of 2019 novel coronavirus disease in a large cohort of infected patients from New York: clinical implications. *Gastroenterology* 2020;159:1137–40.
- 52 Han C, Duan C, Zhang S, *et al*. Digestive symptoms in COVID-19 patients with mild disease severity: clinical presentation, stool viral RNA testing, and outcomes. *Am J Gastroenterol* 2020;115:916–23.
- 53 Hsieh W-H, Cheng M-Y, Ho M-W, *et al*. Featuring COVID-19 cases via screening symptomatic patients with epidemiologic link during flu season in a medical center of central Taiwan. *J Microbiol Immunol Infect* 2020;53:459–66.
- 54 Huang R, Xia J, Chen Y, *et al*. A family cluster of SARS-CoV-2 infection involving 11 patients in Nanjing, China. *Lancet Infect Dis* 2020;20:534–5.
- 55 Huang W-H, Teng L-C, Yeh T-K, *et al*. 2019 novel coronavirus disease (COVID-19) in Taiwan: reports of two cases from Wuhan, China. *J Microbiol Immunol Infect* 2020;53:481–4.
- 56 Huang Y, Tu M, Wang S, *et al*. Clinical characteristics of laboratory confirmed positive cases of SARS-CoV-2 infection in Wuhan, China: a retrospective single center analysis. *Travel Med Infect Dis* 2020;36:101606.
- 57 Jin X, Lian J-S, Hu J-H, *et al*. Epidemiological, clinical and virological characteristics of 74 cases of coronavirus-infected disease 2019 (COVID-19) with gastrointestinal symptoms. *Gut* 2020;69:1002–9.
- 58 Kim ES, Chin BS, Kang CK, *et al*. Clinical course and outcomes of patients with severe acute respiratory syndrome coronavirus 2 infection: a preliminary report of the first 28 patients from the Korean cohort study on COVID-19. *J Korean Med Sci* 2020;35:e142.
- 59 Klopfenstein T, Kadiane-Oussou N'dri Juliette, Royer P-Y, *et al*. Diarrhea: an underestimated symptom in coronavirus disease 2019. *Clin Res Hepatol Gastroenterol* 2020;44:282–3.
- 60 Kluytmans M, Buiting A, Pas S. SARS-COV2 infection in 86 healthcare workers in two Dutch hospitals in March 2020. *medRxiv* 2020.
- 61 Kuang Y, Zhang H, Zhou R. Epidemiological and clinical characteristics of 944 cases of 2019 novel coronavirus infection of Non-COVID-19 exporting City, Zhejiang, China. Zhejiang, China (February 20, 2020) 2020.
- 62 Liu K, Fang Y-Y, Deng Y, *et al*. Clinical characteristics of novel coronavirus cases in tertiary hospitals in Hubei Province. *Chin Med J* 2020;133:1025–31.
- 63 Kujawski SA, Wong KK, Collins JP. First 12 patients with coronavirus disease 2019 (COVID-19) in the United States. *MedRxiv* 2020.
- 64 Lechien JR, Chiesa-Estomba CM, De Siati DR, *et al*. Olfactory and gustatory dysfunctions as a clinical presentation of mild-to-moderate forms of the coronavirus disease (COVID-19): a multicenter European study. *Eur Arch Otorhinolaryngol* 2020;277:2251–61.
- 65 Li K, Wu J, Wu F, *et al*. The clinical and chest CT features associated with severe and critical COVID-19 pneumonia. *Invest Radiol* 2020;55:327–31.
- 66 Lin L, Jiang X, Zhang Z, *et al*. Gastrointestinal symptoms of 95 cases with SARS-CoV-2 infection. *Gut* 2020;69:997–1001.
- 67 Liu Y, Yang Y, Zhang C, *et al*. Clinical and biochemical indexes from 2019-nCoV infected patients linked to viral loads and lung injury. *Sci China Life Sci* 2020;63:364–74.
- 68 Luo S, Zhang X, Xu H. Don't overlook digestive symptoms in patients with 2019 novel coronavirus disease (COVID-19). *Clin Gastroenterol Hepatol* 2020;18:1636–7.
- 69 Nobel YR, Phipps M, Zucker J, *et al*. Gastrointestinal Symptoms and Coronavirus Disease 2019: A Case-Control Study From the United States. *Gastroenterology* 2020;159:373–5.
- 70 Pan F, Ye T, Sun P, *et al*. Time course of lung changes at chest CT during recovery from coronavirus disease 2019 (COVID-19). *Radiology* 2020;295:715–21.
- 71 Pan L, Mu M, Yang P, *et al*. Clinical characteristics of COVID-19 patients with digestive symptoms in Hubei, China. *Am J Gastroenterol* 2020;115:766–73.
- 72 Pung R, Chiew CJ, Young BE, *et al*. Investigation of three clusters of COVID-19 in Singapore: implications for surveillance and response measures. *Lancet* 2020;395:1039–46.
- 73 Redd WD, Zhou JC, Hathorn KE, *et al*. Prevalence and characteristics of gastrointestinal symptoms in patients with severe acute respiratory syndrome coronavirus 2 infection in the United States: a multicenter cohort study. *Gastroenterology* 2020;159:765–7.
- 74 Ren L-L, Wang Y-M, Wu Z-Q, *et al*. Identification of a novel coronavirus causing severe pneumonia in human: a descriptive study. *Chin Med J* 2020;133:1015–24.
- 75 Shi H, Han X, Jiang N, *et al*. Radiological findings from 81 patients with COVID-19 pneumonia in Wuhan, China: a descriptive study. *Lancet Infect Dis* 2020;20:425–34.
- 76 Shi S, Qin M, Shen B, *et al*. Association of cardiac injury with mortality in hospitalized patients with COVID-19 in Wuhan, China. *JAMA Cardiol* 2020;5:802.
- 77 Shu L, Wang X, Li M. Clinical characteristics of 545 cases confirmed COVID-19 in Wuhan stadium cabin Hospital. available at SSRN 3552844, 2020. Available: <https://ssrn.com/abstract=3552844>



- 78 Siegel A, Chang PJ, Jarou ZJ, *et al.* Lung base findings of coronavirus disease (COVID-19) on abdominal CT in patients with predominant gastrointestinal symptoms. *AJR Am J Roentgenol* 2020;215:607–9.
- 79 Song F, Shi N, Shan F, *et al.* Emerging 2019 novel coronavirus (2019-nCoV) pneumonia. *Radiology* 2020;295:210–7.
- 80 Spiteri G, Fielding J, Diercke M, *et al.* First cases of coronavirus disease 2019 (COVID-19) in the who European region, 24 January to 21 February 2020. *Euro Surveill* 2020;25.
- 81 Tabata S, Imai K, Kawano S. The clinical characteristics of COVID-19: a retrospective analysis of 104 patients from the outbreak on board the diamond Princess cruise ship in Japan. *medRxiv* 2020.
- 82 Wan Y, Li J, Shen L, *et al.* Enteric involvement in hospitalised patients with COVID-19 outside Wuhan. *Lancet Gastroenterol Hepatol* 2020;5:534–5.
- 83 Wang L, Gao Y-H, Lou L-L, *et al.* The clinical dynamics of 18 cases of COVID-19 outside of Wuhan, China. *Eur Respir J* 2020;55:2000398.
- 84 Wang L, Duan Y, Zhang W, *et al.* Epidemiologic and clinical characteristics of 26 cases of COVID-19 arising from Patient-to-Patient transmission in Liaocheng, China. *Clin Epidemiol* 2020;12:387–91.
- 85 Wang L, He W, Yu X, *et al.* Coronavirus disease 2019 in elderly patients: characteristics and prognostic factors based on 4-week follow-up. *J Infect* 2020;80:639–45.
- 86 Wang X, Fang J, Zhu Y, *et al.* Clinical characteristics of non-critically ill patients with novel coronavirus infection (COVID-19) in a Fangcang Hospital. *Clin Microbiol Infect* 2020;26:1063–8.
- 87 Wang Z, Chen X, Lu Y, *et al.* Clinical characteristics and therapeutic procedure for four cases with 2019 novel coronavirus pneumonia receiving combined Chinese and Western medicine treatment. *Biosci Trends* 2020;14:64–8.
- 88 Wei X-S, Wang X, Niu Y-R. Clinical characteristics of SARS-CoV2 infected pneumonia with diarrhea 2020. Available at SSRN 3546120.
- 89 Wölfel R, Corman VM, Guggemos W, *et al.* Virological assessment of hospitalized patients with COVID-2019. *Nature* 2020;581:465–9.
- 90 Wu J, Liu J, Zhao X, *et al.* Clinical characteristics of imported cases of coronavirus disease 2019 (COVID-19) in Jiangsu Province: a multicenter descriptive study. *Clin Infect Dis* 2020;71:706–12.
- 91 Wu J, Wu X, Zeng W, *et al.* Chest CT findings in patients with coronavirus disease 2019 and its relationship with clinical features. *Invest Radiol* 2020;55:257–61.
- 92 Wu Y, Guo C, Tang L, *et al.* Prolonged presence of SARS-CoV-2 viral RNA in faecal samples. *Lancet Gastroenterol Hepatol* 2020;5:434–5.
- 93 Xia X-Y, Wu J, Liu H-L, *et al.* Epidemiological and initial clinical characteristics of patients with family aggregation of COVID-19. *J Clin Virol* 2020;127:104360.
- 94 Xiao F, Tang M, Zheng X, *et al.* Evidence for gastrointestinal infection of SARS-CoV-2. *Gastroenterology* 2020;158:1831–3.
- 95 Xie H, Zhao J, Lian N, *et al.* Clinical characteristics of non-ICU hospitalized patients with coronavirus disease 2019 and liver injury: a retrospective study. *Liver Int* 2020;40:1321–6.
- 96 Xiong Y, Sun D, Liu Y, *et al.* Clinical and high-resolution CT features of the COVID-19 infection: comparison of the initial and follow-up changes. *Invest Radiol* 2020;55:332–9.
- 97 Xu X, Yu C, Qu J, *et al.* Imaging and clinical features of patients with 2019 novel coronavirus SARS-CoV-2. *Eur J Nucl Med Mol Imaging* 2020;47:1275–80.
- 98 Xu X-W, Wu X-X, Jiang X-G, *et al.* Clinical findings in a group of patients infected with the 2019 novel coronavirus (SARS-CoV-2) outside of Wuhan, China: retrospective case series. *BMJ* 2020;368:m606.
- 99 Yang F, Shi S, Zhu J, *et al.* Clinical characteristics and outcomes of cancer patients with COVID-19. *J Med Virol* 2020;92:2067–73.
- 100 Yang X, Yu Y, Xu J, *et al.* Clinical course and outcomes of critically ill patients with SARS-CoV-2 pneumonia in Wuhan, China: a single-centered, retrospective, observational study. *Lancet Respir Med* 2020;8:475–81.
- 101 Young BE, Ong SWX, Kalimuddin S, *et al.* Epidemiologic features and clinical course of patients infected with SARS-CoV-2 in Singapore. *JAMA* 2020;323:1488.
- 102 Yu P, Zhu J, Zhang Z, *et al.* A familial cluster of infection associated with the 2019 novel coronavirus indicating possible person-to-person transmission during the incubation period. *J Infect Dis* 2020;221:1757–61.
- 103 Zhang G, Hu C, Luo L, *et al.* Clinical features and short-term outcomes of 221 patients with COVID-19 in Wuhan, China. *J Clin Virol* 2020;127:104364.
- 104 Zhang J-J, Dong X, Cao Y-Y, *et al.* Clinical characteristics of 140 patients infected with SARS-CoV-2 in Wuhan, China. *Allergy* 2020;75:1730–41.
- 105 Zhang J, Wang S, Xue Y. Fecal specimen diagnosis 2019 novel coronavirus-infected pneumonia. *J Med Virol* 2020;92:680–2.
- 106 Zhao D, Yao F, Wang L, *et al.* A comparative study on the clinical features of coronavirus 2019 (COVID-19) pneumonia with other pneumonias. *Clin Infect Dis* 2020;71:756–61.
- 107 Zhao W, Zhong Z, Xie X, *et al.* Relation between chest CT findings and clinical conditions of coronavirus disease (COVID-19) pneumonia: a multicenter study. *AJR Am J Roentgenol* 2020;214:1072–7.
- 108 Zhao X-Y, Xu X-X, Yin H-S, *et al.* Clinical characteristics of patients with 2019 coronavirus disease in a non-Wuhan area of Hubei Province, China: a retrospective study. *BMC Infect Dis* 2020;20:311.
- 109 Zhou F, Yu T, Du R, *et al.* Clinical course and risk factors for mortality of adult inpatients with COVID-19 in Wuhan, China: a retrospective cohort study. *Lancet* 2020;395:1054–62.
- 110 Zhou S, Wang Y, Zhu T, *et al.* Ct features of coronavirus disease 2019 (COVID-19) pneumonia in 62 patients in Wuhan, China. *AJR Am J Roentgenol* 2020;214:1287–94.
- 111 Zou L, Ruan F, Huang M, *et al.* SARS-CoV-2 viral load in upper respiratory specimens of infected patients. *N Engl J Med* 2020;382:1177–9.
- 112 Holshue ML, DeBolt C, Lindquist S, *et al.* First case of 2019 novel coronavirus in the United States. *N Engl J Med Overseas Ed* 2020;382:929–36.
- 113 Khader M, Al Bishawi A, Kambal A, *et al.* SARS-CoV-2 infection presenting as colitis with chest and abdomen CT findings. *Radiol Case Rep* 2020;15:2427–32.
- 114 Grande G, Cocca S, Russo S, *et al.* COVID-19 and the gastrointestinal system: lesions beyond the symptoms? *ACG Case Rep J* 2020;7:e00464.
- 115 Gulen M, Satar S. Uncommon presentation of COVID-19: gastrointestinal bleeding. *Clin Res Hepatol Gastroenterol* 2020;44:e72–6.
- 116 Cholankeril G, Podboy A, Aivaliotis VI, *et al.* Association of digestive symptoms and hospitalization in patients with SARS-CoV-2 infection. *Am J Gastroenterol* 2020;115:1129–32.
- 117 Cavaliere K, Levine C, Wander P, *et al.* Management of upper GI bleeding in patients with COVID-19 pneumonia. *Gastrointest Endosc* 2020;92:454–5.
- 118 Hassani AH, Beheshti A, Almasi F, *et al.* Unusual gastrointestinal manifestations of COVID-19: two case reports. *Gastroenterol Hepatol Bed Bench* 2020;13:410–4.
- 119 Wu C-Y, Yu X-P, Ma AHY, *et al.* Coronavirus disease 19 with gastrointestinal symptoms as initial manifestations: a case report. *J Int Med Res* 2020;48:300060520952256.
- 120 Wang K, Luo J, Tan F, *et al.* Acute pancreatitis as the initial manifestation in 2 cases of COVID-19 in Wuhan, China. *Open Forum Infect Dis* 2020;7:ofaa324.
- 121 Dietrich CG, Hübner D, Marx G, *et al.* Primary presentation of COVID-19 solely with gastrointestinal symptoms: a problem for the containment of the disease. *Eur J Gastroenterol Hepatol* 2020;32:1475–8.
- 122 Kandasamy S. An unusual presentation of COVID-19: acute pancreatitis. *Ann Hepatobiliary Pancreat Surg* 2020;24:539–41.
- 123 Wagner J, Garcia-Rodriguez V, Yu A, *et al.* The model for end-stage liver Disease-Sodium score at admission is prognostic of Covid-19 disease severity. *SN Compr Clin Med* 2020;1:–5.
- 124 Wahab SF, Løgstrup BB. Atypical manifestations of COVID-19 in general practice: a case of gastrointestinal symptoms. *BMJ Case Rep* 2020;13:e237520.
- 125 Cheung S, Delgado Fuentes A, Fetterman AD. Recurrent acute pancreatitis in a patient with COVID-19 infection. *Am J Case Rep* 2020;21:e927076.
- 126 Docherty AB, Green CA. Features of 16,749 hospitalised UK patients with COVID-19 using the ISARIC who clinical characterization protocol. *MedRxiv* 2020.
- 127 CDC COVID-19 Response Team. Coronavirus Disease 2019 in Children - United States, February 12–April 2, 2020. *MMWR Morb Mortal Wkly Rep* 2020;69:422–6.
- 128 CDC COVID-19 Response Team. Characteristics of Health Care Personnel with COVID-19 - United States, February 12–April 9, 2020. *MMWR Morb Mortal Wkly Rep* 2020;69:477–81.
- 129 Borobia A, Carcas A, Arnalich F, *et al.* A cohort of patients with COVID-19 in a major teaching hospital in Europe. *J Clin Med* 2020;9:1733.
- 130 Elmunzer BJ, Spitzer RL, Foster LD. Digestive Manifestations in patients hospitalized with COVID-19. *MedRxiv* 2020.



- 131 Gil-Rodrigo A, Miró Oscar, Piñera P, *et al.* Analysis of clinical characteristics and outcomes in patients with COVID-19 based on a series of 1000 patients treated in Spanish emergency departments. *Emergencias* 2020;32:233–41.
- 132 Livanos AE, Jha D, Cossarini F, *et al.* Gastrointestinal involvement attenuates COVID-19 severity and mortality. *medRxiv* 2020. doi:10.1101/2020.09.07.20187666. [Epub ahead of print: 09 Sep 2020].
- 133 Tsiobouris P, Ekmektzoglou K, Agorogianni A, *et al.* Gastrointestinal involvement in COVID-19 patients: a retrospective study from a Greek COVID-19 referral hospital. *Ann Gastroenterol* 2020;33:465–72.
- 134 Aghemo A, Piovani D, Parigi TL, *et al.* COVID-19 digestive system involvement and clinical outcomes in a large academic hospital in Milan, Italy. *Clin Gastroenterol Hepatol* 2020;18:2366–8. doi:10.1016/j.cgh.2020.05.011
- 135 Mo P, Xing Y, Xiao Y, *et al.* Clinical characteristics of refractory COVID-19 pneumonia in Wuhan, China. *Clin Infect Dis* 2020. doi:10.1093/cid/ciaa270. [Epub ahead of print: 16 Mar 2020].
- 136 Fanelli V, Fiorentino M, Cantaluppi V, *et al.* Acute kidney injury in SARS-CoV-2 infected patients. *Crit Care* 2020;24:155.
- 137 Colaneri M, Sacchi P, Zuccaro V, *et al.* Clinical characteristics of coronavirus disease (COVID-19) early findings from a teaching hospital in Pavia, North Italy, 21 to 28 February 2020. *Euro Surveill* 2020;25:2000460.
- 138 Buscarini E, Manfredi G, Brambilla G, *et al.* Gi symptoms as early signs of COVID-19 in hospitalised Italian patients. *Gut* 2020;69:1547–8.
- 139 Hundt MA, Deng Y, Ciarleglio MM, *et al.* Abnormal liver tests in COVID-19: a retrospective observational cohort study of 1,827 patients in a major U.S. Hospital network. *Hepatology* 2020;72:1169–76.
- 140 Laszkowska M, Faye AS, *et al.* Disease course and outcomes of COVID-19 among hospitalized patients with gastrointestinal manifestations. *Clin Gastroenterol Hepatol* 2020:31367–7.
- 141 Ferm S, Fisher C, Pakala T, *et al.* Analysis of gastrointestinal and hepatic manifestations of SARS-CoV-2 infection in 892 patients in queens, NY. *Clin Gastroenterol Hepatol* 2020;18:2378–9.
- 142 Sulaiman T, Algharawi AA, Idrees M, *et al.* The prevalence of gastrointestinal symptoms among patients with COVID-19 and the effect on the severity of the disease. *JGH Open* 2020;4:1162–6.
- 143 Suleyman G, Fadel RA, Malette KM, *et al.* Clinical characteristics and morbidity associated with coronavirus disease 2019 in a series of patients in metropolitan Detroit. *JAMA Netw Open* 2020;3:e2012270.
- 144 Zhan T, Liu M, Tang Y, *et al.* Retrospective analysis of clinical characteristics of 405 patients with COVID-19. *J Int Med Res* 2020;48:300060520949039.
- 145 Moura DTHde, Proença IM, McCarty TR, *et al.* Gastrointestinal manifestations and associated health outcomes of COVID-19: a Brazilian experience from the largest South American public hospital. *Clinics* 2020;75:e2271.
- 146 Lei P, Zhang L, Han P, *et al.* Liver injury in patients with COVID-19: clinical profiles, CT findings, the correlation of the severity with liver injury. *Hepatol Int* 2020;14:733–42.
- 147 Papa A, Covino M, Pizzolante F, *et al.* Gastrointestinal symptoms and digestive comorbidities in an Italian cohort of patients with COVID-19. *Eur Rev Med Pharmacol Sci* 2020;24:7506–11.
- 148 Hindson J. COVID-19: faecal-oral transmission? *Nat Rev Gastroenterol Hepatol* 2020;17:259.
- 149 Tariq R, Saha S, Furqan F, *et al.* Prevalence and mortality of COVID-19 patients with gastrointestinal symptoms: a systematic review and meta-analysis. *Mayo Clin Proc* 2020;95:1632–48.
- 150 Mao R, Qiu Y, He J-S, *et al.* Manifestations and prognosis of gastrointestinal and liver involvement in patients with COVID-19: a systematic review and meta-analysis. *Lancet Gastroenterol Hepatol* 2020;5:667–78.
- 151 Sultan S, Altayar O, Siddique SM, *et al.* AGA Institute rapid review of the gastrointestinal and liver manifestations of COVID-19, meta-analysis of international data, and recommendations for the consultative management of patients with COVID-19. *Gastroenterology* 2020;159:320–34.
- 152 van Doorn AS, Meijer B, Frampton CMA, *et al.* Systematic review with meta-analysis: SARS-CoV-2 stool testing and the potential for faecal-oral transmission. *Aliment Pharmacol Ther* 2020;52:1276–88.
- 153 World Health Organization. Estimating mortality from COVID-19. Available: <https://www.who.int/news-room/commentaries/detail/estimating-mortality-from-covid-19> [Accessed 27 Dec 2020].
- 154 Sorci G, Favre B, Morand S. Explaining among-country variation in COVID-19 case fatality rate. *Sci Rep* 2020;10:18909.
- 155 World Health Organization. Health systems response monitor (HSRM), 2020Published April. Available: <https://analysis.covid19healthsystem.org/index.php/2020/04/16/how-do-covid-19-testing-criteria-differ-across-countries/> [Accessed December 29, 2020].
- 156 Zhang Y, Ma P, Zhang X, *et al.* Association of digestive symptoms with severity and mortality of COVID-19: a protocol for systematic review and meta-analysis. *Medicine* 2020;99:e22736.
- 157 Koch A, Streetz K, Tischendorf J, *et al.* [Abnormal liver function tests in the intensive care unit]. *Med Klin Intensivmed Notfmed* 2013;108:599–610.
- 158 Akin H, Kurt R, Tufan F, *et al.* Newly reported studies on the increase in gastrointestinal symptom prevalence with COVID-19 infection: a comprehensive systematic review and meta-analysis. *Diseases* 2020;8:41.
- 159 Aziz M, Haghbin H, Lee-Smith W, *et al.* Gastrointestinal predictors of severe COVID-19: systematic review and meta-analysis. *Ann Gastroenterol* 2020;33:615–30.
- 160 Dong Z-Y, Xiang B-J, Jiang M, *et al.* The prevalence of gastrointestinal symptoms, abnormal liver function, digestive system disease and liver disease in COVID-19 infection: a systematic review and meta-analysis. *J Clin Gastroenterol* 2021;55:67–76.
- 161 Zarifian A, Zamiri Bidary M, Arekhi S, *et al.* Gastrointestinal and hepatic abnormalities in patients with confirmed COVID-19: a systematic review and meta-analysis. *J Med Virol* 202010.1002/jmv.26314. [Epub ahead of print: 18 Jul 2020].