

Rosmarinic acid inhibits cell proliferation, migration, and invasion and induces apoptosis in human glioma cells

YUNSHENG LIU^{1*}, XIANGPING XU^{1*}, HAN TANG¹, YUCHEN PAN¹, BING HU² and GUODONG HUANG¹

¹Department of Neurosurgery, Shenzhen Second People's Hospital, The First Affiliated Hospital of Shenzhen University Health Science Center, Shenzhen, Guangdong 518035;

²Department of Otolaryngology Head and Neck Surgery, The First Affiliated Hospital of Sun Yat-sen University, Guangzhou, Guangdong 510080, P.R. China

Received September 17, 2020; Accepted January 25, 2021

DOI: 10.3892/ijmm.2021.4900

Abstract. There is a growing evidence that Fyn kinase is upregulated in glioblastoma multiforme (GBM), where it plays a key role in tumor proliferation and invasion. In the present study, the antitumor effects of rosmarinic acid (RA), a Fyn inhibitor, were explored in human-derived U251 and U343 glioma cell lines. These cells were treated with various concentrations of RA to determine its effects on proliferation, migration, invasion, apoptosis, and gene and protein expression levels. The CCK-8 assay revealed that RA significantly suppressed cell viability of U251 and U343 cells. Furthermore, RA significantly reduced proliferation rates, inhibited migration and invasion, and decreased the expression levels of invasion-related factors, such as matrix metalloproteinase (MMP)-2 and MMP-9. TUNEL staining revealed that RA resulted in a dose-dependent increase of U251 and U343 cell apoptosis. In line with this finding, the expression of apoptosis suppressor protein Bcl-2 was downregulated and that of the pro-apoptotic proteins Bax and cleaved caspase-3 was increased. In addition, it was revealed that the phosphatidylinositol 3-kinase (PI3K)/Akt/nuclear factor- κ B (NF- κ B) signaling pathway was involved in RA-induced cytotoxicity in

U251 and U343 cells. Collectively, the present study suggested RA as a drug candidate for the treatment of GBM.

Introduction

Glioblastoma multiforme (GBM) is the most malignant primary brain tumor in humans and the most lethal cancer of the central nervous system, with an annual incidence of 3.19 cases per 100,000 persons (1-3). Despite significant advances in tumor resection, radiation therapy, and chemotherapy, the prognosis of GBM remains poor. Treatment failure and continued disease progression results in a median overall survival of approximately 12-15 months, with a 5-year survival rate of less than 10% (4). Studies have revealed that the rapid proliferation and high invasiveness of GBM cells lead to treatment failure and tumor recurrence (5,6). Therefore, it is urgent to develop an effective treatment for GBM.

Src-family kinases (SFKs) are non-receptor tyrosine kinases. The family of proteins contains nine members (Fyn, c-Src, Yes, Lyn, Lck, Blk, Hck, Fgr and Yrk), five of which (Fyn, c-Src, Yes, Lyn and Lck) are expressed in human gliomas (7-10). SFKs are frequently overexpressed and/or activated in numerous human cancers (11-13), where they play a role in tumor invasion, proliferation, metastasis, survival, and angiogenesis (14). By knocking down individual SFKs in cultured cells (LN229, SF767, and GBM8), Lewis-Tuffin *et al* (7) determined that reduced c-Src, Fyn, and Yes expression also reduced growth and migration and altered motility-related protein phosphorylation patterns, while reduced Lyn expression had little effect on growth and migration. Other *in vitro* studies have revealed that Fyn knockdown is associated with decreased glioma cell proliferation and migration (15,16). Fyn tyrosine kinase, a downstream target of the oncogenic receptor tyrosine kinase pathway, is rarely mutated, yet significantly overexpressed, in human GBM (17,18). The mechanisms of Fyn tyrosine kinase overexpression in human glioma cells are poorly known yet they are important since small-molecule inhibitors of Fyn may be therapeutic options for glioma.

Rosmarinic acid (RA) is a natural phenolic compound that acts as a Fyn inhibitor by homology modeling of the human Fyn structure (19). RA can be found in species of the

Correspondence to: Dr Bing Hu, Department of Otolaryngology Head and Neck Surgery, The First Affiliated Hospital of Sun Yat-sen University, 58 Zhong Shan Er Lu, Guangzhou, Guangdong 510080, P.R. China

E-mail: szshent@email.szu.edu.cn

Professor Guodong Huang, Department of Neurosurgery, Shenzhen Second People's Hospital, The First Affiliated Hospital of Shenzhen University Health Science Center, 3002 Sungang West Road, Shenzhen, Guangdong 518035, P.R. China

E-mail: huang_guodong_sz@126.com

*Contributed equally

Key words: apoptosis, Fyn, glioma, invasion, PI3K/Akt, proliferation, rosmarinic acid

Boraginaceae and Lamiaceae families, mainly in the leaves of *Rosmarinus officinalis*, from which it can be easily isolated; it can also be found in peppermint, lemon balm, oregano, sage, and thyme (20,21). The molecular structure of RA (chemical formula: C₁₈H₁₆O₈) contains two benzene rings located at the extremities of the molecule and a pair of ortho-hydroxyl groups in each benzene ring (Fig. 1). It has been reported that RA exerts a variety of beneficial biological properties, mainly antioxidant (22), anti-inflammatory (23), pro-apoptotic (24), and neuroprotective (25) effects. Furthermore, recent studies have revealed that RA has antineoplastic activity in leukemia, hepatocellular carcinoma, gastric carcinoma, colorectal cancer, breast cancer, and small-cell carcinoma of the lung (26-29). However, the effects of RA on tumor biological characteristics, such as proliferation, migration, and invasion of human glioma cells and their mechanisms, have not been clearly reported.

The phosphatidylinositol 3-kinase (PI3K)/Akt/nuclear factor- κ B (NF- κ B) signaling pathway is an important pathway in the regulation of tumorigenesis, and is significantly activated in glioma (30). The activation of PI3K/Akt/NF- κ B signaling cascades is inhibited by Fyn knockdown in primary astrocytes (31). Therefore, it was hypothesized that RA may have an anti-glioma effect by inhibiting the PI3K/Akt/NF- κ B signaling pathway.

In the present study, the effects of RA on glioma growth, migration, invasion, and apoptosis *in vitro* were explored, and the findings suggest that RA may be a potential therapeutic agent for glioma.

Materials and methods

Reagents and antibodies. RA was purchased from Aladdin (cat. no. R109804). LY294002 and 740 Y-P were purchased from MedChemExpress (cat. nos. HY-10108 and HY-P0175, respectively). The following primary antibodies were used: Fyn (product code ab125016; 1:2,000) was purchased from Abcam, PI3K (product no. 4249S; 1:1,000), MMP-2 (product no. 87809S; 1:1,000), MMP-9 (product no. 13667S; 1:1,000), Bcl-2 (product no. 3498S; 1:1,000), Bax (product no. 2772S; 1:1,000), cleaved caspase-3 (product no. 9661S; 1:1,000), fibrinogen (product no. 2639S; 1:1,000), and caspase-3 (product no. 9662S; 1:1,000), were all from Cell Signaling Technology, Inc., and phosphorylated Akt (p-Akt) (cat. no. sc-514032; 1:500), Akt (cat. no. sc-81434; 1:1,000), NF- κ B p65 (cat. no. sc-8008; 1:1,000), β -actin (cat. no. sc-47778; 1:2,000), and glyceraldehyde-3-phosphate dehydrogenase (GAPDH) (cat. no. sc-47724; 1:2,000) were purchased from Santa Cruz Biotechnology, Inc.

Cell culture. Human-derived glioma cell lines (U251 and U343) and the normal human astrocyte (NHA) cell line were purchased from the American Type Culture Collection (ATCC). All cells were maintained under 5% CO₂ at 37°C in Dulbecco's modified Eagle's medium (DMEM) (cat. no. 11995040) containing 100 U/ml penicillin, 100 μ g/ml streptomycin (cat. no. 15070063), and 10% fetal bovine serum (FBS) (cat. no. 10100147; all from Gibco; Thermo Fisher Scientific, Inc.) in water-jacketed humidity-controlled incubators.

Cell viability. Cell proliferation was calculated using Cell Counting Kit-8 (CCK-8) assay (Dojindo Molecular

Technologies, Inc.) as per the manufacturer's instructions. Briefly, cells were seeded in 96-well microplates at 2x10³ cells/well and medium containing various concentrations of RA (0, 100, 200 and 400 μ M) were added to the wells. After incubation for 24 or 48 h, the medium was replaced with 10 μ l CCK-8 solution. After further incubation for 1 h at 37°C, the absorbance of each well was measured at 450 nm using a microplate reader (Multiskan Go 1510; Thermo Fisher Scientific, Inc.). In addition, cell viability assessed by CCK-8 assay, was also performed on cells that were treated with or without RA (200 μ M) for 24 h after PI3K agonist (740 Y-P, 25 μ g/ml) or inhibitor (LY294002, 30 μ M) pretreatment for 2 h.

Immunofluorescence. U251 and U343 cells were seeded on a cover slide in a 24-well plate at a density of 5x10⁴ cells/well and maintained in a CO₂ incubator for overnight growth. Then, the cells were treated with RA (0, 100, 200 and 400 μ M) or vehicle for 24 h. Subsequently, the cells were washed three times with PBS and blocked for 1 h in PBS containing 0.2% Triton X-100 and 10% skimmed milk powder at 37°C. Immunodetection was performed by incubation with a Fyn-specific antibody at 37°C for 1 h, followed by overnight incubation at 4°C. After washing three times in PBS, the cover slides were incubated for 1 h at 37°C with an anti-rabbit Alexa Fluor 488-conjugated secondary antibody (1:200; Invitrogen; Thermo Fisher Scientific, Inc.). The cells were then washed three times with PBS and mounted using ProLong™ Gold antifade reagent (P36930; Thermo Fisher Scientific, Inc.). Stained cells were analyzed at a magnification of x200 using a confocal microscope (LSM 800; Zeiss AG).

Wound healing assay. Cell migration was evaluated using the wound healing assay as previously described (32). Briefly, U251 and U343 cells were seeded in 24-well plates at 5x10⁴ cells/well and allowed to adhere. Then, a wound/scratch was produced using a 200- μ l pipette tip. After washing off the separated cells with phosphate-buffered solution (PBS), serum-free medium containing various concentrations of RA (0, 100, 200, and 400 μ M) was added to the wells. The wound was observed at regular intervals between 0 and 48 h. Randomly selected areas were photographed at a magnification of x100 using a phase-contrast microscope (CKX41; Olympus Corporation) and the wound area was calculated by ImageJ software (version 1.8.0; National Institutes of Health).

Invasion assay. The invasion assay was conducted using Corning® BioCoat™ Matrigel® Invasion Chambers (product no. 354480; Corning, Inc.) with 8- μ m pore chambers inserted into 24-well plates. U251 and U343 cells (5x10⁴ cells) were cultured in 500 μ l of serum-free DMEM with RA in the inserts and 500 μ l of DMEM containing 15% FBS in the bottom of the wells. After 24 h of incubation, the inserts were washed three times with PBS and the cells were fixed with 4% paraformaldehyde at room temperature for 10 min. After washing with PBS, the cells were stained with 0.1% crystal violet at room temperature for 15 min. Following another wash with PBS, the inner sides of the chamber were wiped with a cotton swab and images of the cells that invaded through the Matrigel® were obtained using a phase-contrast microscope (magnification, x200). Finally, the number of invading cells was counted.

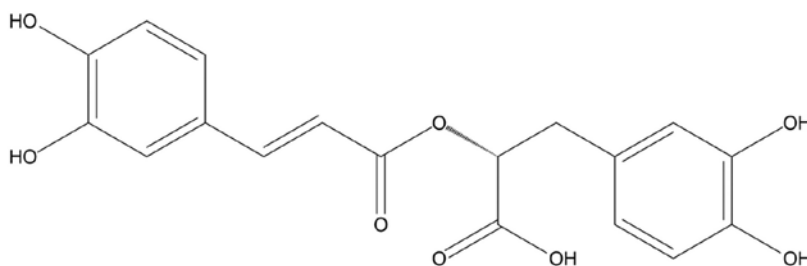


Figure 1. Chemical structure of rosmarinic acid.

TUNEL and DAPI staining. U251 and U343 cells were seeded on a cover slide in a 24-well plate at a density of 3×10^4 cells/well and maintained in a CO₂ incubator for overnight growth. Cells were treated with various concentrations of RA (0, 100, 200, and 400 μ M) or vehicle for 24 h. Terminal deoxynucleotidyl transferase (TdT) dUTP nick-end labeling (TUNEL) staining was performed according to the manufacturer's instructions (product no. C1086; Beyotime Institute of Biotechnology). Briefly, the cells were fixed with 4% paraformaldehyde at room temperature for 30 min, incubated for 5 min with 0.3% Triton X-100 in PBS, and then incubated with a reaction mixture containing terminal deoxynucleotidyl transferase and fluorescent labeling solution for 60 min at 37°C according to the manufacturer's protocol. The cells were then stained with 4',6-diamidino-2-phenylindole (DAPI) for 5 min at 37°C and mounted using ProLong™ Gold antifade reagent. Stained cells were analyzed using a confocal microscope (magnification, x200).

Flow cytometry. Cell apoptosis was detected using an Annexin V-FITC apoptosis detection kit (product no. C1062L; Beyotime Institute of Biotechnology) according to the manufacturer's instructions. In brief, cells were treated with RA (0, 100, 200 and 400 μ M) for 24 h and then resuspended in binding buffer containing Annexin V and PI. After incubation at 25°C in the dark for 15 min, apoptotic cells were evaluated immediately using a FACScan flow cytometer (BD Biosciences). Data analysis was performed using FlowJo v10.0.7 software (Tree Star, Inc.).

Western blot analysis. The cells were lysed in RIPA buffer (cat. no. 89901; Thermo Fisher Scientific, Inc.) supplemented with complete protease inhibitor cocktail and phosphatase inhibitor (Roche Diagnostics). Lysate protein concentrations were determined using the BCA Protein Assay kit (Beyotime Institute of Biotechnology). For some experiments, Nuclear Protein Extraction kit (product no. P0027; Beyotime Institute of Biotechnology) was used to isolate the nuclear proteins in accordance with the manufacturer's instructions. Proteins (20 μ g) from each sample was separated by 10% SDS-polyacrylamide gel electrophoresis (SDS-PAGE) and transferred to polyvinylidene difluoride (PVDF) membranes (EMD Millipore). After blocking with 5% w/v non-fat milk in TBST for 1 h at room temperature, the membranes were incubated overnight at 4°C with primary antibodies. Then, the membranes were washed with TBST and horseradish peroxidase-linked IgG secondary antibodies (anti-mouse; product no. 7076; 1:4,000; and anti-rabbit; product no. 7074;

1:4,000; Cell Signaling Technology, Inc.) were added for 1 h at room temperature. The membranes were visualized with Western Bright™ reagent (cat. no. K-12043-D10; Advanta, Inc.). The band signals were captured by The ChemiDoc MP system (Bio-Rad Laboratories, Inc.). ImageJ software (version 1.8.0; National Institutes of Health) was used for densitometric analysis. The experiments were repeated at least three times independently.

Statistical analyses. The data are expressed as the mean \pm standard deviation (SD) of at least three independent experiments, and statistical differences of cell viability were determined using two-way analysis of variance (ANOVA) followed by Dunnett's multiple comparison test; other comparisons were performed using one-way ANOVA followed by the Dunnett's multiple comparison test. All statistical analyses were computed by SPSS statistical analysis software version 22.0 (IBM Corp.). Values of $P < 0.05$ were considered to indicate statistically significant differences.

Results

RA inhibits Fyn expression in vitro. First, the effect of RA on the expression of Fyn was examined in glioma cell lines (Fig. 2). RA treatment reduced Fyn expression in U251 and U343 cells in a dose-dependent manner (Fig. 2A, C, D and F). Immunofluorescence staining confirmed that RA inhibited Fyn expression in U251 and U343 cells (Fig. 2B and E).

RA inhibits glioma cell proliferation. Next, the effect of RA on glioma cell proliferation was examined using the CCK-8 assay (Fig. 3). RA treatment inhibited cell proliferation in a time- and dose-dependent manner in U251 and U343 cells (Fig. 3A and C). RA-induced cytotoxicity was also observed under a microscope (Fig. 3B and D). The images revealed that as the concentration of RA increased, the density of glioma cells decreased, and more cells shrank and died. These observations were in line with the results of the CCK-8 assay.

As a control, the effect of RA on NHA was also examined. RA treatment for 24 h or 48 h did not significantly affect NHA cell viability and morphology (Fig. 3E and F). These results indicated that RA specifically inhibited the proliferation of glioma cells, with no significant effect on the proliferation of NHA cells.

RA inhibits glioma cell migration. Metastasis of rapidly migrating tumor cells is the main cause of mortality for most patients with cancer (33). Therefore, inhibiting migration

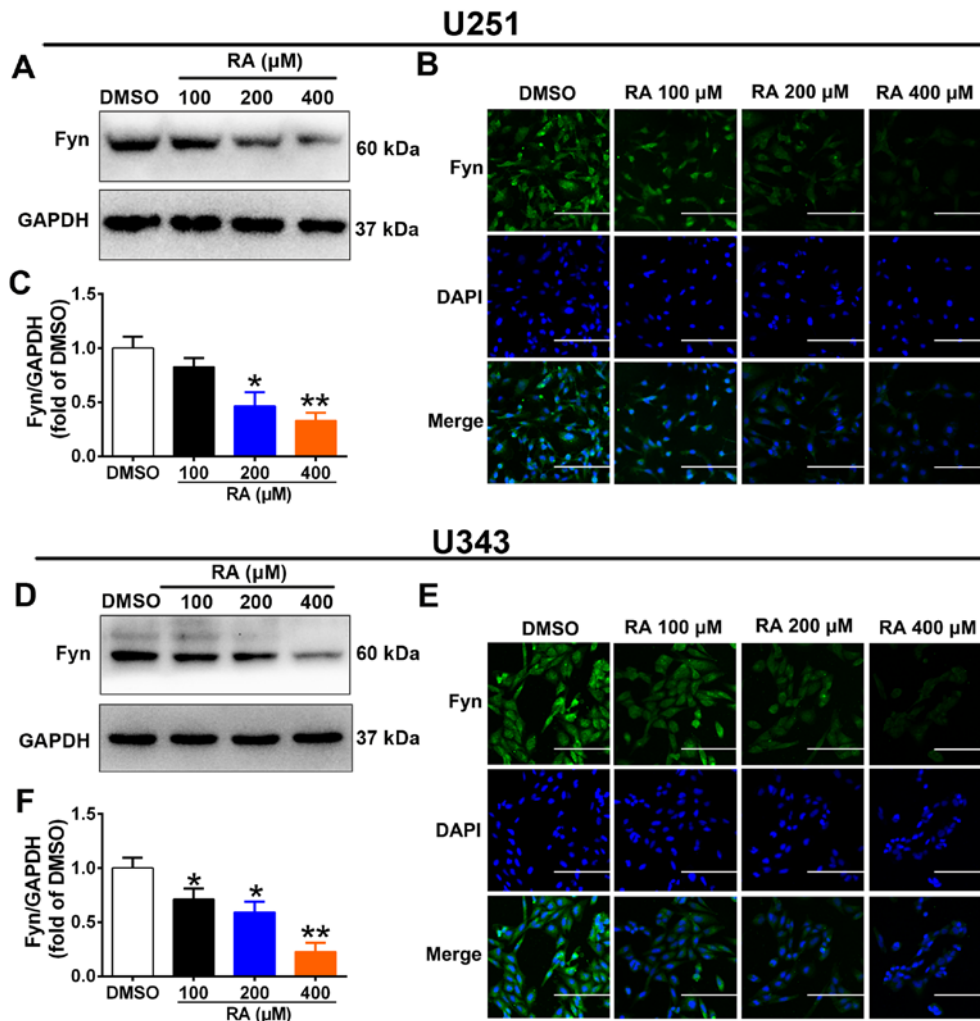


Figure 2. RA inhibits Fyn expression in glioma cells. (A and D) Western blotting revealed that RA treatment suppressed the expression level of Fyn in a dose-dependent manner in U251 and U343 cells. (B and E) Representative areas of Fyn-positive immunofluorescent staining in U251 and U343 cells. Scale bar, 100 μm . (C and F) Densitometric quantification of the bands in A and D. GAPDH was used as a loading control. * $P < 0.05$ and ** $P < 0.01$ vs. the DMSO group. RA, rosmarinic acid.

could be an important strategy to prevent tumor metastasis. The effect of RA on glioma cell migration was examined (Fig. 4). Both U251 and U343 cells exhibited reduced migration after treatment with RA for 24 or 48 h at different concentrations (Fig. 4A and D). Specifically, in the control group of the U251 cell line, wound healing reached 41.0% after 24 h, while it only reached 28.3, 21.6, and 15.0% after treatment with 100, 200, and 400 μM RA, respectively (Fig. 4B). In the control group of the U343 cell line, wound healing reached 40.3% after 24 h, while it only reached 32.3, 21.7, and 14.3% after treatment with 100, 200, and 400 μM RA, respectively (Fig. 4E). At 48 h, wound healing of control U251 and U343 cells reached 86.3% and 80.6%, respectively; and 52.3, 39.3, and 34.0% (U251 cells; Fig. 4C) and 58.7, 40.3, and 28.7% (U343 cells; Fig. 4F) after treatment with 100, 200, and 400 μM RA, respectively.

RA inhibits glioma cell invasion. The high invasion capability of glioma cells is the main reason for the high refractory and recurrence rates of glioma (34). Therefore, the effect of RA on glioma cell invasion was assessed using a Matrigel[®] invasion assay (Fig. 5). RA significantly inhibited invasion through the Matrigel[®] (Fig. 5A and B). Compared with the control group, the percentage

of invading U251 cells was decreased by 21.7, 60.3, and 76.4% after treatment with 100, 200, and 400 μM RA for 24 h, respectively (Fig. 5C); similarly, the percentage of invading U343 cells was decreased by 32, 64.7, and 81%, respectively (Fig. 5D).

Previous studies have reported the role of matrix metalloproteinase-2 (MMP-2) and MMP-9 in cancer development, including tumor cell growth, migration, invasion, and metastasis, and particularly so in glioma (35-37). The expression of MMP-2 and MMP-9 were detected by western blotting. RA dose-dependently inhibited the expression of MMP-2 and MMP-9 in U251 and U343 cells (Fig. 5E-J). Compared with the control group, the expression of MMP-2 in U251 cells was decreased by 20.0, 40.7, and 62.7% (Fig. 5F), and that of MMP-9 was decreased by 19.9, 43.7, and 70% (Fig. 5G), after treatment with 100, 200, and 400 μM for 24 h, respectively. Similarly, the expression of MMP-2 in U343 cells decreased by 38.0, 57.7, and 75.3% (Fig. 5I), and that of MMP-9 was decreased by 16.3, 47.0, and 68.3% (Fig. 5J), after treatment with 100, 200, and 400 μM for 24 h, respectively. These results indicated that RA inhibited glioma cell invasion and migration by reducing the expression of MMPs, thereby providing pathways for the invasion and metastasis of glioma cells.

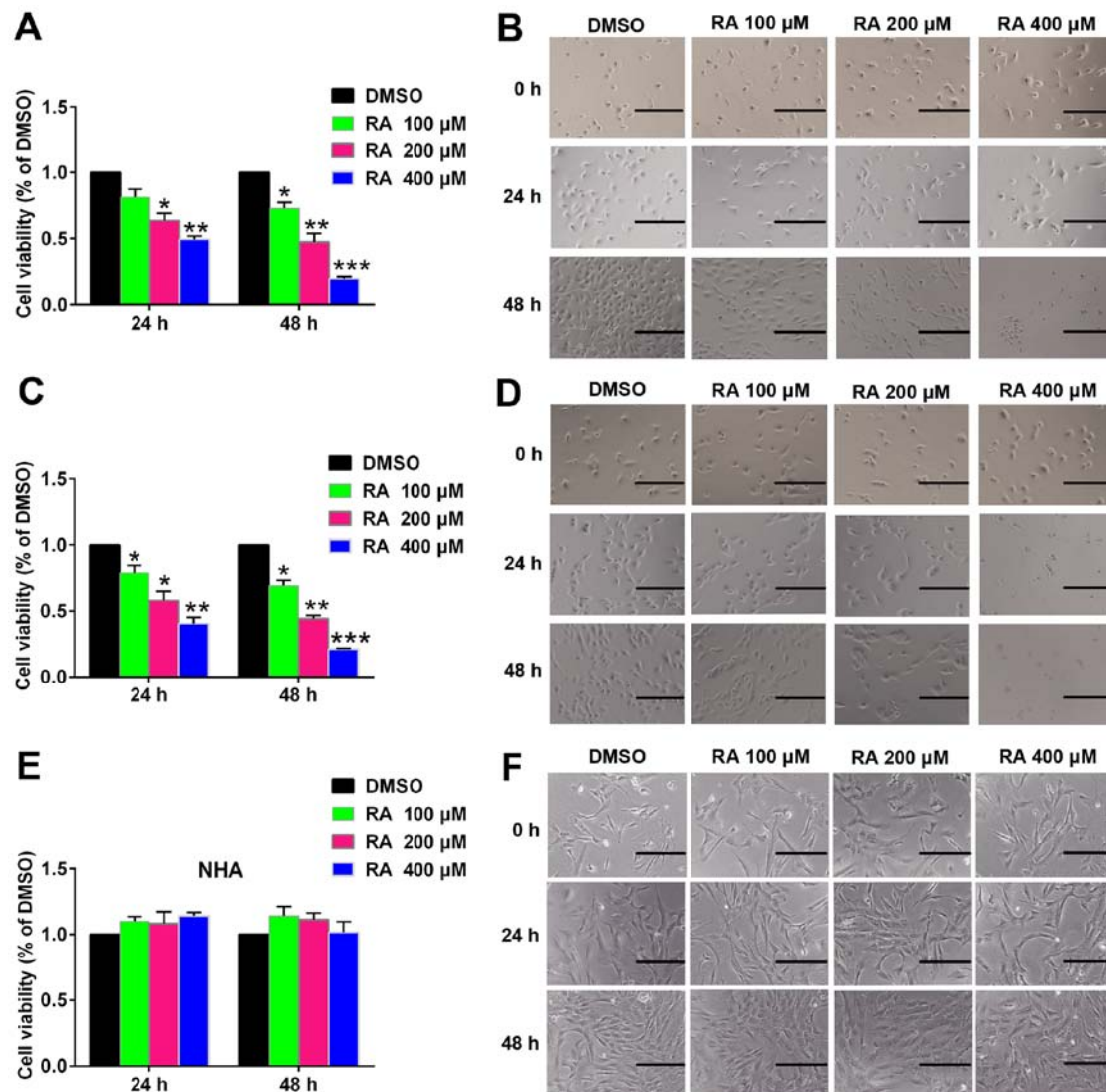


Figure 3. RA inhibits glioma cell growth. (A and C) U251 and U343 cells were treated with the indicated doses of RA for 24 and 48 h, viability was determined using the CCK-8 assay, and data in control cells were normalized to 100%. Data are presented as the means \pm SD of three experiments. (B and D) The morphological changes of U251 and U343 cells. U251 and U343 cells were treated with various doses of RA for 24 and 48 h and observed using inverted phase-contrast microscopy. Scale bar, 100 μ m. (E) The viability of NHA was determined after treatment with the indicated doses of RA for 24 and 48 h. (F) Cell morphology of NHA after treatment with the indicated doses of RA for 24 and 48 h. Scale bar, 100 μ m. * P <0.05, ** P <0.01 and *** P <0.001 vs. the DMSO group. RA, rosmarinic acid.

RA increases glioma cell apoptosis. Apoptosis plays a crucial role in cancer treatment (38). Therefore, whether RA could induce apoptosis was investigated. A TUNEL assay revealed that RA significantly induced apoptosis in a dose-dependent manner in both U251 and U343 cells (Fig. 6A-C). Annexin V/PI dual-staining assays by flow cytometry were also conducted to detect apoptosis after treatment with RA. As revealed in Fig. 6D, compared with the control group, the apoptotic rates of the U251 and U343 cells treated with RA were increased. The apoptosis suppressor protein Bcl-2 and the pro-apoptotic proteins Bax, cleaved caspase-3, and caspase-3 are key in the process of apoptosis in glioma cells (39,40). Caspase-3 is the effector caspase that initiates cell degradation during the final stage of apoptosis, and cleaved caspase3 is the active form of caspase3; Bcl-2, a survival-promoting protein, and Bax, a pro-apoptotic protein, both are members of the Bcl family that play important roles in the regulation of intrinsic apoptotic signaling (39,41). It was determined that RA treatment

increased the expression of cleaved caspase-3 and Bax and reduced the expression of Bcl-2 in both U251 and U343 cells (Fig. 6E and G). In addition, RA treatment increased the relative ratio of Bax/Bcl-2 as well as cleaved caspase-3/caspase-3, indicating RA-induced apoptosis in glioma cells. Compared with the control group, the relative ratio of Bax/Bcl-2 in U251 cells was increased by 7.6, 63.0, and 156.3%, and that in U343 cells was increased by 10.7, 77.7, 228.6%, after treatment with 100, 200, and 400 μ M RA for 24 h, respectively (Fig. 6F and H). In addition, the relative ratio of cleaved caspase-3/caspase-3 in U251 cells was increased by 27.3, 79.6, and 124.3%, and that in U343 cells was increased by 29.3, 36.3, and 86%, after treatment with 100, 200, and 400 μ M RA for 24 h (Fig. 6F and H).

RA inhibits the PI3K/Akt/NF- κ B signaling pathway in glioma cells. PI3K/Akt/NF- κ B signaling plays a vital role in cell proliferation, survival, and metabolism, and is constitutively

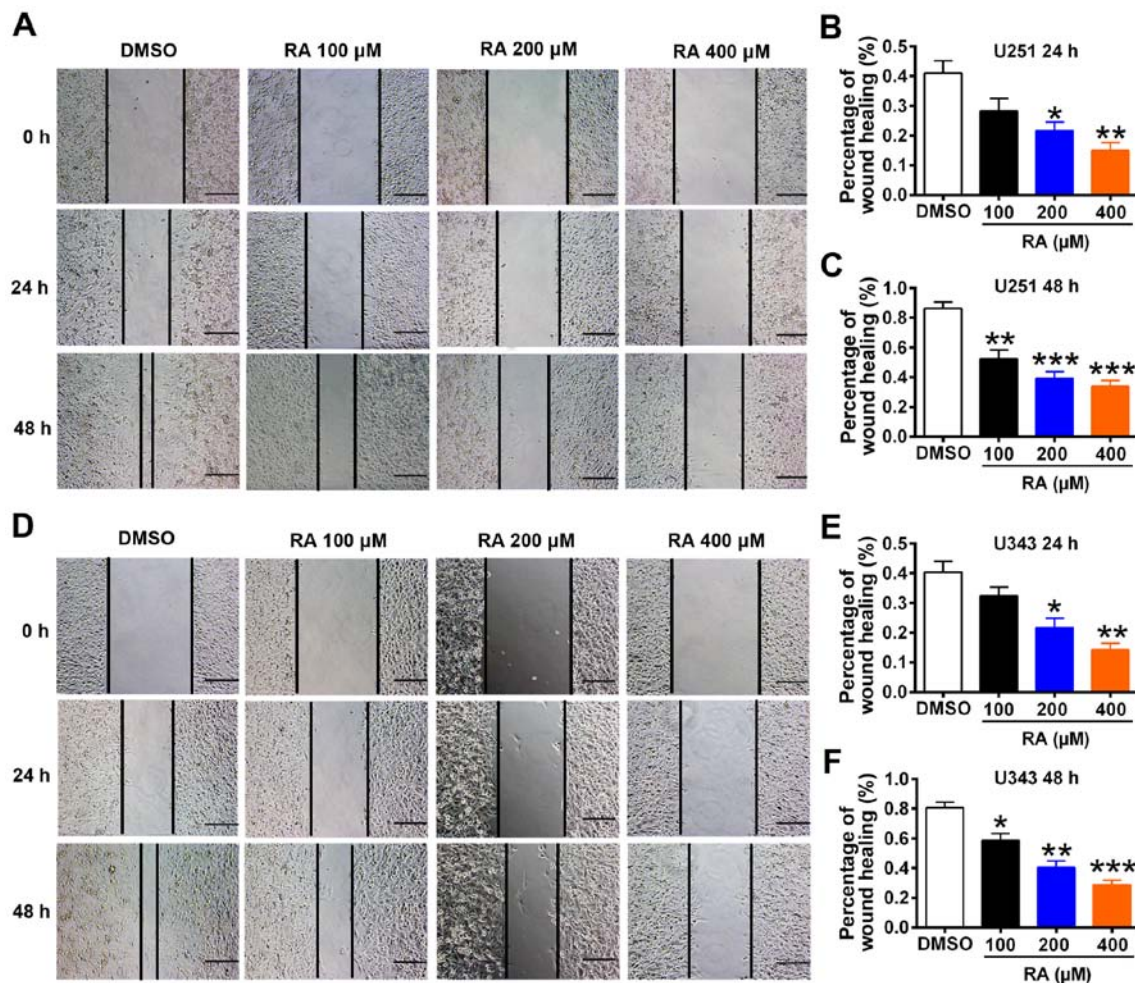


Figure 4. RA reduces glioma cell migration. (A) Images of U251 cells immediately after, and at 24 and 48 h post-scratch with the indicated RA concentrations. Scale bar, 200 μm . (B and C) Quantification the wound healing of A. (D) Images of U343 cells immediately after, and at 24 and 48 h post-scratch with the indicated RA concentrations. Scale bar, 200 μm . (E and F) Quantification the wound healing of D. * $P < 0.05$, ** $P < 0.01$ and *** $P < 0.001$ vs. the DMSO group. RA, rosmarinic acid.

activated in most tumors, including glioma (42-44). Therefore, the effect of RA on the PI3K/Akt/NF- κB signaling pathway was examined. It was revealed that treatment with 100, 200, and 400 μM RA for 24 h significantly decreased the protein expression of PI3K, p-Akt, and NF- κB in U251 and U343 cells compared to control cells (Fig. 7A-D). Specifically, the expression of PI3K was decreased by 11.7, 24, and 50.3% in U251 cells and by 12.0, 40, and 59% in U343 cells, respectively. In U251 cells, the expression of p-Akt was decreased by 18.0, 51.7, and 66.7% and that of NF- κB p65 by 30.7, 31.4, and 56%, respectively. Similarly, in U343 cells, the expression of p-Akt was decreased by 29.4, 57.7, and 71.3% and that of NF- κB p65 by 22.0, 28.4, and 47.0%, respectively. Considering that NF- κB p65 serves as a transcription factor and oncogene (45), the effect of RA on nuclear translocation of NF- κB p65 was also investigated. The results revealed that the expression level of NF- κB p65 in the nucleus was significantly inhibited following treatment with RA in U251 and U343 glioma cells (Fig. 7E, F, H and I). To further investigate the mechanisms underlying RA-mediated inhibition of U251 and U343 cells, cell viability was performed. The results revealed that RA significantly inhibited the cell viability of U251 and U343 cells. Moreover, treatment with RA combined with 740 Y-P

reversed the RA-induced decrease in cell viability, and treatment with RA combined with LY294002 enhanced the effects of RA on cell viability (Fig. 7G and J). Collectively, these results indicated that RA may inhibit proliferation of glioma cells via the PI3K/Akt/NF- κB signaling pathway.

Discussion

In the present study, the effects of RA were explored on the biological characteristics of two glioma cell lines, U251 and U343. It was revealed that RA inhibited proliferation, migration, and invasion and induced apoptosis in both U251 and U343 cells. In general, the effects were dose-dependent. It was also determined that RA significantly reduced the protein levels of MMP-2 and MMP-9, which promote migration and induce invasion, and of the apoptosis suppressor protein Bcl-2; and increased the levels of pro-apoptotic proteins, such as cleaved caspase-3 and Bax in both U251 and U343 cells. Previous research has reported that the PI3K/Akt/NF- κB signaling pathway plays an important role in the growth, proliferation, migration, and invasion of glioma (46). The present study further recognized the importance of PI3K/Akt/NF- κB signaling in glioma.

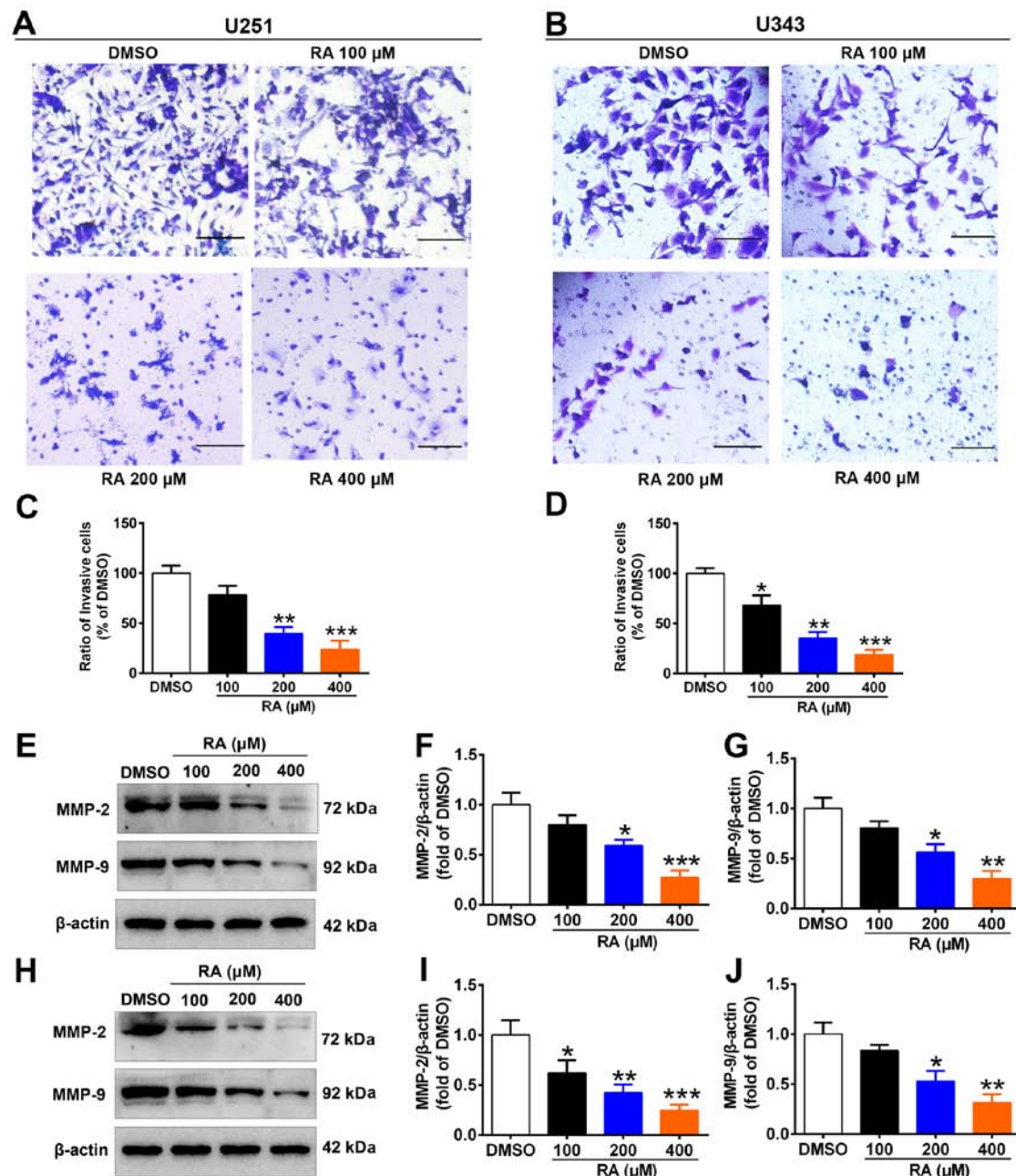


Figure 5. RA reduces glioma cell invasion and inhibits the expression of related factors. (A) Images of U251 cells after treatment with the indicated concentrations of RA for 24 h. Scale bar, 50 μ m. (B) Images of U343 cells after treatment with indicated concentrations of RA for 24 h. Scale bar, 50 μ m. (C) Percentage of invasive U251 cells. (D) Percentage of invasive U343 cells. (E) The expression levels of MMP-2 and MMP-9 were detected by western blotting in U251 cells after treatment with the indicated concentrations of RA for 24 h. (F and G) Densitometric quantification of the bands in E. (H) The expression levels of MMP-2 and MMP-9 were detected by western blotting in U343 cells after treatment with the indicated concentrations of RA for 24 h. (I and J) Densitometric quantification of the bands in H. The histogram indicates the mean \pm SD of three independent experiments. * P <0.05, ** P <0.01 and *** P <0.001 vs. the DMSO group. RA, rosmarinic acid.

Glioma, one of the most common intracranial tumors, is characterized by rapid growth and high aggressiveness (47). To date, neurosurgery is the optimal and most direct treatment for gliomas. However, neurosurgery often fails to completely remove the tumor tissue due to the highly invasive nature of the glioma, and subsequent treatment requires a combination of drug chemotherapy and radiotherapy (48). Radiotherapy of brain tissue often has great side effects, and chemotherapy plays a crucial role in the treatment and prognosis of patients with this cancer (49). However, the efficacy of current chemotherapy options is not often satisfactory

due to side effects and the development of drug resistance. Therefore, the identification and development of more efficient and less toxic drugs for the prevention and treatment of glioma is essential.

In recent years, the use of traditional Chinese medicine to treat tumors has attracted increasing attention from researchers owing to the significant curative efficacy and relatively fewer side effects (37,50,51). RA is a medicinal herb that not only is easy to isolate, but can also be ingested from food or tea (52). RA has been reported to have antioxidant, antiviral, and anti-inflammatory effects and has been used in an Egyptian

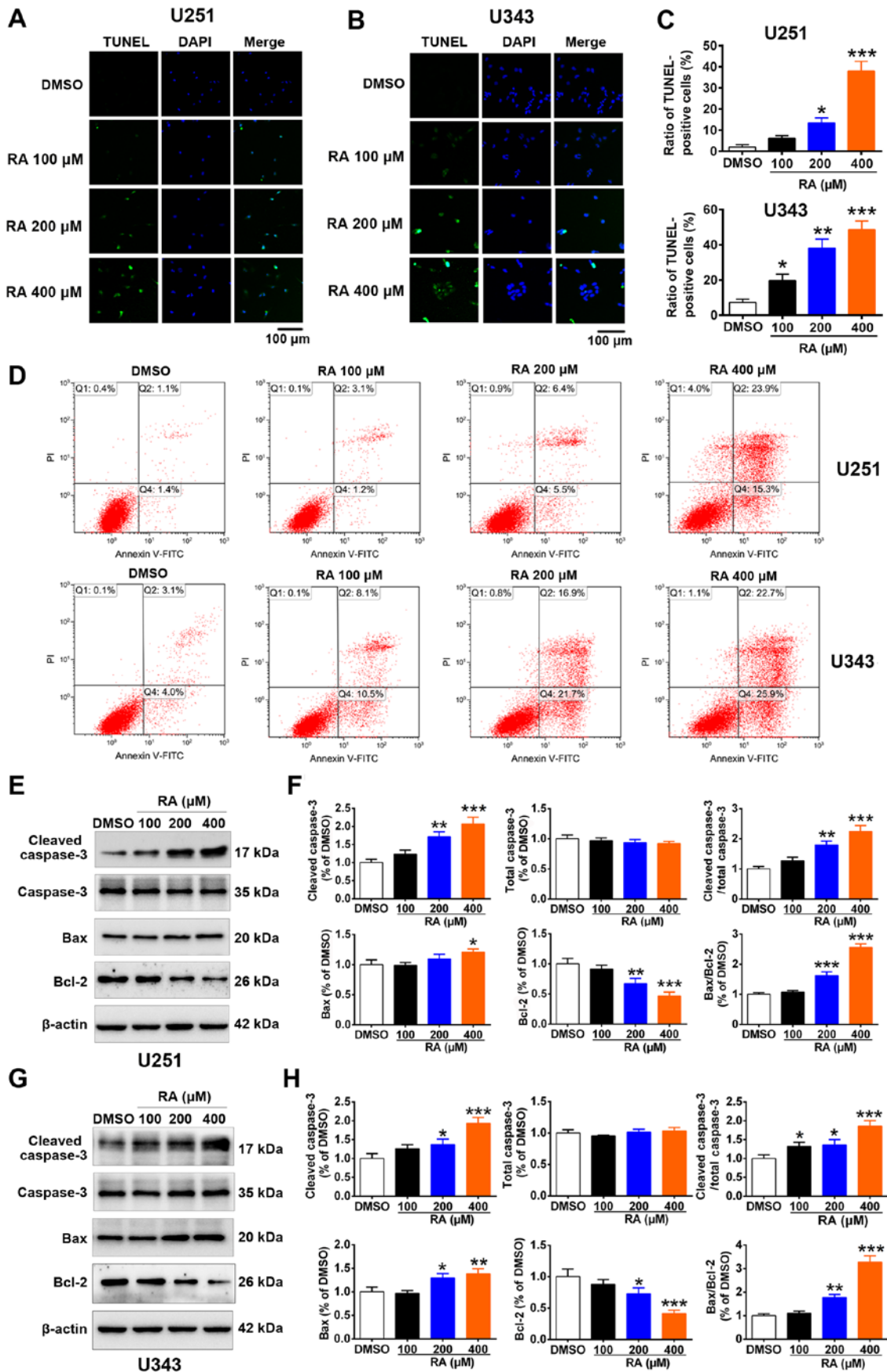


Figure 6. RA induces glioma cell apoptosis. (A and B) U251 and U343 cells were treated with the indicated doses of RA for 24 h, and then collected for TUNEL staining. Scale bar, 100 μm. (C) Statistical analysis of apoptotic U251 and U343 cells. (D) U251 and U343 cells were exposed to the indicated concentrations of RA for 24 h and then analyzed for apoptosis by flow cytometry using the Annexin V/PI dual-staining assay. (E and G) U251 and U343 cells were treated with RA for 24 h. Then, western blotting was conducted to detect the expression of cleaved caspase-3, caspase-3, Bax, and Bcl-2. (F and H) Densitometric quantification of the bands in E and G. The expression of GAPDH was used as an endogenous control. *P<0.05, **P<0.01 and ***P<0.001 vs. the DMSO group. RA, rosmarinic acid; TUNEL, terminal deoxynucleotidyl transferase dUTP nick-end labeling.

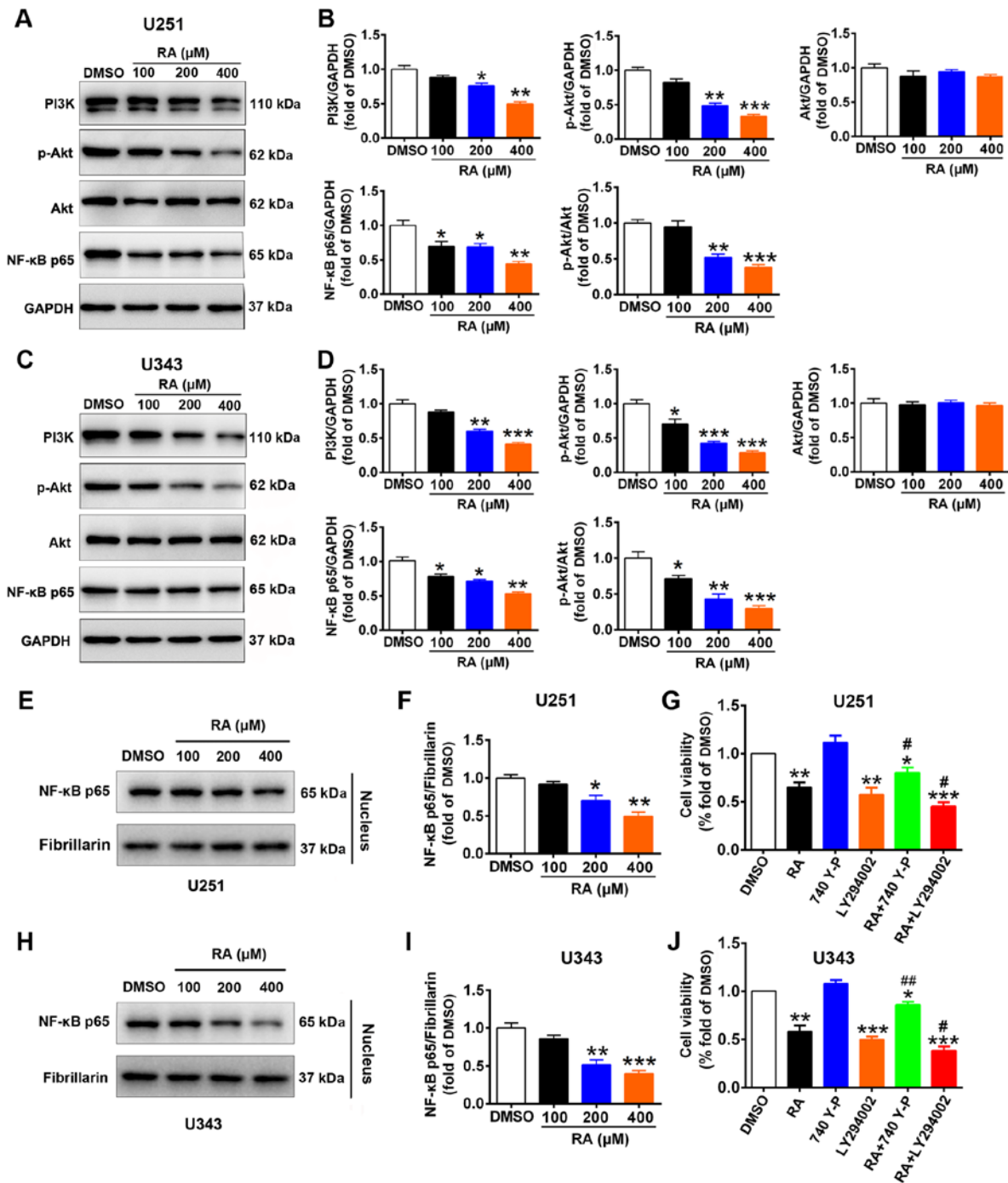


Figure 7. The PI3K/Akt/NF- κ B signaling pathway is involved in RA-induced cytotoxicity in glioma cells. (A) The protein expression of PI3K, p-Akt, Akt, and NF- κ B p65 in U251 was assessed by western blotting. (B) Densitometric quantification of the bands in A. (C) The protein expression of PI3K, p-Akt, Akt, and NF- κ B p65 in U343 was assessed by western blotting. (D) Densitometric quantification of the bands in C. (E and H) Expression levels of NF- κ B p65 in the nucleus were detected by western blotting. (F and I) Densitometric quantification of the bands in E and H. (G and J) Viability of U251 and U343 cells as measured by CCK-8 assay. The results are expressed as the mean \pm SD. GAPDH was used as a loading control. * P <0.05, ** P <0.01 and *** P <0.001 vs. the DMSO group; # P <0.05 and ## P <0.01 vs. the RA treatment group. RA, rosmarinic acid.

herbal tea for the prevention of cancer (53). Furthermore, RA was revealed to significantly improve the efficiency of radiotherapy by exerting a radiosensitizing effect on tumor cells (54). In addition, it enhanced chemosensitivity of resistant gastric carcinoma cells to 5-Fu by downregulating miR-642a-3p and miR-6785-5p and increasing FOXO₄ expression (28). Various studies have revealed that RA has antineoplastic activity in leukemia, hepatocellular carcinoma, gastric carcinoma, colorectal cancer, breast cancer, and small-cell carcinoma of

the lung (26-29). However, the effects of RA on the biological characteristics of glioma is limited.

The present study revealed that RA inhibited the expression of Fyn in a dose-dependent manner in U251 and U343 cells. This provides a theoretical basis for its antitumor effects in glioma. High invasion and rapid proliferation are the main reasons for refractory glioma and poor prognosis of glioma (34). Cell viability assay and morphological observation revealed that RA inhibited the growth of glioma

in a time- and dose-dependent manner. Concurrently, it had little effect on NHA cell proliferation and morphology. This suggested that RA may be a promising antitumor drug based on its weak toxicity. The present study also demonstrated that RA inhibited glioma cell invasion. Since MMP-2 and MMP-9 are important regulators of invasion, the effect of RA on their expression levels was also examined. Western blotting revealed that treatment with RA decreased MMP-2 and MMP-9 expression in glioma cells. The main feature of tumor metastasis is the migration of cancer cells from the initial tumor site to the circulatory system or lymphatic system (55). Therefore, inhibiting tumor cell migration could reduce metastasis. In the present study, RA inhibited migration of U251 and U343 cells. Considering that apoptosis is a crucial antitumor mechanism (56), it was investigated whether RA could induce apoptosis in glioma cells. The percentage of apoptotic U251 and U343 cells was significantly increased after treatment with RA. As Bcl-family proteins are main regulators of apoptosis (57), the effect of RA on the expression of Bax and Bcl-2 was also examined. RA increased Bax expression and decreased Bcl-2 expression in glioma cells. Correspondingly, the expression of cleaved (activated) caspase-3, but not that of total caspase-3, was increased by RA. In addition, the Bax/Bcl-2 and cleaved caspase-3/caspase-3 ratios were increased by RA, thus providing a mechanistic basis for the induction of apoptosis by RA in glioma cells. These results are similar to the reported role of RA in colorectal cancer (37). Numerous studies have revealed that the PI3K/Akt/NF- κ B pathway is closely related to glioma progression (46,58,59). In line with these studies, the present results revealed that the PI3K/Akt/NF- κ B signaling pathway was involved in the antitumor effects of RA in glioma.

Collectively, these findings indicated that the antitumor effects of RA in glioma may be mediated by Fyn inhibition. The detailed mechanisms warrant further investigation *in vitro* and *in vivo*.

Acknowledgements

Not applicable.

Funding

The present research was funded by China Postdoctoral Science Foundation (grant no. 2019M663104) and the Science and Technology Planning Project of Guangdong Province (grant no. 2017A020215089).

Availability of data and materials

The datasets used and/or analyzed during the current study are available from the corresponding author on reasonable request.

Authors' contributions

BH and GH conceived and designed the study. YL, XX, HT and YP performed the experiments. YL, XX and HT analyzed the data. YL, BH and GH wrote the manuscript. All authors have read and approved the final manuscript.

Ethics approval and consent to participate

Not applicable.

Patient consent for publication

Not applicable.

Competing interests

The authors declare that they have no conflicts of interest.

References

- Lapointe S, Perry A and Butowski NA: Primary brain tumours in adults. *Lancet* 392: 432-446, 2018.
- Senders JT, Harary M, Stopa BM, Staples P, Broekman MLD, Smith TR, Gormley WB and Arnaout O: Information-based medicine in glioma patients: A clinical perspective. *Comput Math Methods Med* 2018: 8572058, 2018.
- Batash R, Asna N, Schaffer P, Francis N and Schaffer M: Glioblastoma multiforme, diagnosis and treatment; recent literature review. *Curr Med Chem* 24: 3002-3009, 2017.
- Stupp R, Mason WP, van den Bent MJ, Weller M, Fisher B, Taphoorn MJ, Belanger K, Brandes AA, Marosi C, Bogdahn U, *et al*: Radiotherapy plus concomitant and adjuvant temozolomide for glioblastoma. *N Engl J Med* 352: 987-996, 2005.
- Zhang S, Liao K, Miao Z, Wang Q, Miao Y, Guo Z, Qiu Y, Chen B, Ren L, Wei Z, *et al*: CircFOXO3 promotes glioblastoma progression by acting as a competing endogenous RNA for NFAT5. *Neuro Oncol* 21: 1284-1296, 2019.
- El-Sehemy A, Selvadurai H, Ortin-Martinez A, Pokrajac N, Mamatjan Y, Tachibana N, Rowland K, Lee L, Park N, Aldape K, *et al*: Notch1 mediates tumor-promoting and -suppressive effects in glioblastoma via Notch and Wnt. *J Clin Invest* 130: 3069-3086, 2020.
- Lewis-Tuffin LJ, Feathers R, Hari P, Durand N, Li Z, Rodriguez FJ, Bakken K, Carlson B, Schroeder M, Sarkaria JN and Anastasiadis PZ: Src family kinases differentially influence glioma growth and motility. *Mol Oncol* 9: 1783-1798, 2015.
- Irby RB and Yeatman TJ: Role of Src expression and activation in human cancer. *Oncogene* 19: 5636-5642, 2000.
- Summy JM and Gallick GE: Src family kinases in tumor progression and metastasis. *Cancer Metastasis Rev* 22: 337-358, 2003.
- Frame MC: Src in cancer: Deregulation and consequences for cell behaviour. *Biochim Biophys Acta* 1602: 114-130, 2002.
- Tornillo G, Knowlson C, Kendrick H, Cooke J, Mirza H, Aurrekoetxea-Rodríguez I, Vivanco MDM, Buckley NE, Grigoriadis A and Smalley MJ: Dual mechanisms of LYN kinase dysregulation drive aggressive behavior in breast cancer cells. *Cell Rep* 25: 3674-3692 e10, 2018.
- Emaduddin M, Bicknell DC, Bodmer WF and Feller SM: Cell growth, global phosphotyrosine elevation, and c-Met phosphorylation through Src family kinases in colorectal cancer cells. *Proc Natl Acad Sci USA* 105: 2358-2362, 2008.
- Masaki T, Okada M, Tokuda M, Shiratori Y, Hatase O, Shirai M, Nishioka M and Omata M: Reduced C-terminal Src kinase (Csk) activities in hepatocellular carcinoma. *Hepatology* 29: 379-384, 1999.
- Yadav V and Denning MF: Fyn is induced by Ras/PI3K/Akt signaling and is required for enhanced invasion/migration. *Mol Carcinog* 50: 346-352, 2011.
- Lu KV, Zhu S, Cvrljevic A, Huang TT, Sarkaria S, Ahkavan D, Dang J, Dinca EB, Plaisier SB, Oderberg I, *et al*: Fyn and SRC are effectors of oncogenic epidermal growth factor receptor signaling in glioblastoma patients. *Cancer Res* 69: 6889-6898, 2009.
- Han X, Zhang W, Yang X, Wheeler CG, Langford CP, Wu L, Filippova N, Friedman GK, Ding Q, Fathallah-Shaykh HM, *et al*: The role of Src family kinases in growth and migration of glioma stem cells. *Int J Oncol* 45: 302-310, 2014.
- Comba A, Dunn PJ, Argento AE, Kadiyala P, Ventosa M, Patel P, Zamler DB, Núñez FJ, Zhao L, Castro MG and Lowenstein PR: Fyn tyrosine kinase, a downstream target of receptor tyrosine kinases, modulates antiglioma immune responses. *Neuro Oncol* 22: 806-818, 2020.

18. Bowman RL, Wang Q, Carro A, Verhaak RG and Squatrito M: GlioVis data portal for visualization and analysis of brain tumor expression datasets. *Neuro Oncol* 19: 139-141, 2017.
19. Jelić D, Mildner B, Kostrun S, Nujčić K, Verbanac D, Culić O, Antolović R and Brandt W: Homology modeling of human Fyn kinase structure: Discovery of rosmarinic acid as a new Fyn kinase inhibitor and in silico study of its possible binding modes. *J Med Chem* 50: 1090-1100, 2007.
20. Şengelen A and Önay-Uçar E: Rosmarinic acid and siRNA combined therapy represses Hsp27 (HSPB1) expression and induces apoptosis in human glioma cells. *Cell Stress Chaperones* 23: 885-896, 2018.
21. Juskowiak B, Bogacz A, Wolek M, Kamiński A, Uzar I, Seremak-Mrozikiewicz A and Czerny B: Expression profiling of genes modulated by rosmarinic acid (RA) in MCF-7 breast cancer cells. *Ginekol Pol* 89: 541-545, 2018.
22. Yang SY, Hong CO, Lee GP, Kim CT and Lee KW: The hepatoprotection of caffeic acid and rosmarinic acid, major compounds of *Perilla frutescens*, against t-BHP-induced oxidative liver damage. *Food Chem Toxicol* 55: 92-99, 2013.
23. Chu X, Ci X, He J, Jiang L, Wei M, Cao Q, Guan M, Xie X, Deng X and He J: Effects of a natural prolyl oligopeptidase inhibitor, rosmarinic acid, on lipopolysaccharide-induced acute lung injury in mice. *Molecules* 17: 3586-3598, 2012.
24. Lin CS, Kuo CL, Wang JP, Cheng JS, Huang ZW and Chen CF: Growth inhibitory and apoptosis inducing effect of *Perilla frutescens* extract on human hepatoma HepG2 cells. *J Ethnopharmacol* 112: 557-567, 2007.
25. Kelsey NA, Wilkins HM and Linseman DA: Nutraceutical antioxidants as novel neuroprotective agents. *Molecules* 15: 7792-7814, 2010.
26. Wu CF, Hong C, Klauck SM, Lin YL and Efferth T: Molecular mechanisms of rosmarinic acid from *Salvia miltiorrhiza* in acute lymphoblastic leukemia cells. *J Ethnopharmacol* 176: 55-68, 2015.
27. Xavier CP, Lima CF, Fernandes-Ferreira M and Pereira-Wilson C: *Salvia frutescens*, *Salvia officinalis*, and rosmarinic acid induce apoptosis and inhibit proliferation of human colorectal cell lines: The role in MAPK/ERK pathway. *Nutr Cancer* 61: 564-571, 2009.
28. Yu C, Chen DQ, Liu HX, Li WB, Lu JW and Feng JF: Rosmarinic acid reduces the resistance of gastric carcinoma cells to 5-fluorouracil by downregulating FOXO4-targeting miR-6785-5p. *Biomed Pharmacother* 109: 2327-2334, 2019.
29. Yesil-Celiktas O, Sevimli C, Bedir E and Vardar-Sukan F: Inhibitory effects of rosmarinic acid, rosmarinic acid and rosmarinic acid on the growth of various human cancer cell lines. *Plant Foods Hum Nutr* 65: 158-163, 2010.
30. Li W, Du Q, Li X, Zheng X, Lv F, Xi X, Huang G, Yang J and Liu S: Eriodictyol Inhibits Proliferation, Metastasis and induces apoptosis of glioma cells via PI3K/Akt/NF- κ B signaling pathway. *Front Pharmacol* 11: 114, 2020.
31. Ko HM, Lee SH, Kim KC, Joo SH, Choi WS and Shin CY: The role of TLR4 and fyn interaction on lipopolysaccharide-stimulated PAI-1 expression in astrocytes. *Mol Neurobiol* 52: 8-25, 2015.
32. Zhang T, Ji D, Wang P, Liang D, Jin L, Shi H, Liu X, Meng Q, Yu R and Gao S: The atypical protein kinase R1OK3 contributes to glioma cell proliferation/survival, migration/invasion and the AKT/mTOR signaling pathway. *Cancer Lett* 415: 151-163, 2018.
33. Yachida S, Jones S, Bozic I, Antal T, Leary R, Fu B, Kamiyama M, Hruban RH, Eshleman JR, Nowak MA, *et al*: Distant metastasis occurs late during the genetic evolution of pancreatic cancer. *Nature* 467: 1114-1117, 2010.
34. Marín-Ramos NI, Thein TZ, Cho HY, Swenson SD, Wang W, Schönthal AH, Chen TC and Hofman FM: NEO212 inhibits migration and invasion of glioma stem cells. *Mol Cancer Ther* 17: 625-637, 2018.
35. Pan H, Xue W, Zhao W and Schachner M: Expression and function of chondroitin 4-sulfate and chondroitin 6-sulfate in human glioma. *FASEB J* 34: 2853-2868, 2020.
36. Szabo E, Schneider H, Seystahl K, Rushing EJ, Herting F, Weidner KM and Weller M: Autocrine VEGFR1 and VEGFR2 signaling promotes survival in human glioblastoma models in vitro and in vivo. *Neuro Oncol* 18: 1242-1252, 2016.
37. Han YH, Kee JY and Hong SH: Rosmarinic Acid Activates AMPK to inhibit metastasis of colorectal cancer. *Front Pharmacol* 9: 68, 2018.
38. Niknejad H, Yazdanpanah G and Ahmadiani A: Induction of apoptosis, stimulation of cell-cycle arrest and inhibition of angiogenesis make human amnion-derived cells promising sources for cell therapy of cancer. *Cell Tissue Res* 363: 599-608, 2016.
39. Wang Y, Tang H, Zhang Y, Li J, Li B, Gao Z, Wang X, Cheng G and Fei Z: Saponin B, a novel cytostatic compound purified from *Anemone taipaiensis*, induces apoptosis in a human glioblastoma cell line. *Int J Mol Med* 32: 1077-1084, 2013.
40. Su CC, Wang MJ and Chiu TL: The anti-cancer efficacy of curcumin scrutinized through core signaling pathways in glioblastoma. *Int J Mol Med* 26: 217-224, 2010.
41. Zhang WF, Yang Y, Li X, Xu DY, Yan YL, Gao Q, Jia AL and Duan MH: Angelica polysaccharides inhibit the growth and promote the apoptosis of U251 glioma cells in vitro and in vivo. *Phytomedicine* 33: 21-27, 2017.
42. Yang SX, Polley E and Lipkowitz S: New insights on PI3K/AKT pathway alterations and clinical outcomes in breast cancer. *Cancer Treat Rev* 45: 87-96, 2016.
43. Arlt A, Gehrz A, Mürköster S, Vorndamm J, Kruse ML, Fölsch UR and Schäfer H: Role of NF-kappaB and Akt/PI3K in the resistance of pancreatic carcinoma cell lines against gemcitabine-induced cell death. *Oncogene* 22: 3243-3251, 2003.
44. Tomar VS, Patil V and Somasundaram K: Temozolomide induces activation of Wnt/ β -catenin signaling in glioma cells via PI3K/Akt pathway: Implications in glioma therapy. *Cell Biol Toxicol* 36: 273-278, 2020.
45. Song L, Chen X, Mi L, Liu C, Zhu S, Yang T, Luo X, Zhang Q, Lu H and Liang X: Icarin-induced inhibition of SIRT6/NF- κ B triggers redox mediated apoptosis and enhances anti-tumor immunity in triple-negative breast cancer. *Cancer Sci* 111: 4242-4256, 2020.
46. Fahey JM, Korytowski W and Girotti AW: Upstream signaling events leading to elevated production of pro-survival nitric oxide in photodynamically-challenged glioblastoma cells. *Free Radic Biol Med* 137: 37-45, 2019.
47. Furnari FB, Fenton T, Bachoo RM, Mukasa A, Stommel JM, Stegh A, Hahn WC, Ligon KL, Louis DN, Brennan C, *et al*: Malignant astrocytic glioma: Genetics, biology, and paths to treatment. *Genes Dev* 21: 2683-2710, 2007.
48. Karachi A, Dastmalchi F, Mitchell DA and Rahman M: Temozolomide for immunomodulation in the treatment of glioblastoma. *Neuro Oncol* 20: 1566-1572, 2018.
49. Patil SA, Hosni-Ahmed A, Jones TS, Patil R, Pfeffer LM and Miller DD: Novel approaches to glioma drug design and drug screening. *Expert Opin Drug Discov* 8: 1135-1151, 2013.
50. Xie JH, Lai ZQ, Zheng XH, Xian YF, Li Q, Ip SP, Xie YL, Chen JN, Su ZR, Lin ZX and Yang XB: Apoptosis induced by bruceine D in human non-small-cell lung cancer cells involves mitochondrial ROS-mediated death signaling. *Int J Mol Med* 44: 2015-2026, 2019.
51. Ong SKL, Shanmugam MK, Fan L, Fraser SE, Arfuso F, Ahn KS, Sethi G and Bishayee A: Focus on formononetin: Anticancer potential and molecular targets. *Cancers* 11: 611, 2019.
52. Petersen M and Simmonds MS: Rosmarinic acid. *Phytochemistry* 62: 121-125, 2003.
53. Elansary HO and Mahmoud EA: Egyptian herbal tea infusions' antioxidants and their antiproliferative and cytotoxic activities against cancer cells. *Nat Prod Res* 29: 474-479, 2015.
54. Alcaraz M, Alcaraz-Saura M, Achel DG, Olivares A, López-Morata JA and Castillo J: Radiosensitizing effect of rosmarinic acid in metastatic melanoma B16F10 cells. *Anticancer Res* 34: 1913-1921, 2014.
55. McCall B, McPartland CK, Moore R, Frank-Kamenetskii A and Booth BW: Effects of astaxanthin on the proliferation and migration of breast cancer cells in vitro. *Antioxidants (Basel)* 7: 135, 2018.
56. Shin J, Song MH, Oh JW, Keum YS and Saini RK: Pro-oxidant actions of carotenoids in triggering apoptosis of cancer cells: A review of emerging evidence. *Antioxidants (Basel)* 9: 532, 2020.
57. Chowdhury I, Thompson WE, Welch C, Thomas K and Matthews R: Prohibitin (PHB) inhibits apoptosis in rat granulosa cells (GCs) through the extracellular signal-regulated kinase 1/2 (ERK1/2) and the Bcl family of proteins. *Apoptosis* 18: 1513-1525, 2013.
58. Yan J, Xu C, Li Y, Tang B, Xie S, Hong T and Zeng E: Long non-coding RNA LINC00526 represses glioma progression via forming a double negative feedback loop with AXL. *J Cell Mol Med* 23: 5518-5531, 2019.
59. Nakabayashi H and Shimizu K: Involvement of Akt/NF- κ B pathway in antitumor effects of parthenolide on glioblastoma cells in vitro and in vivo. *BMC Cancer* 12: 453, 2012.

