



Review

Natural Products Targeting Amyloid Beta in Alzheimer's Disease

Joo-Hee Lee, Na-Hyun Ahn, Su-Bin Choi, Youngeun Kwon and Seung-Hoon Yang *

Department of Medical Biotechnology, College of Life Science and Biotechnology, Dongguk University, Seoul 04620, Korea; 2018111727@dgu.ac.kr (J.-H.L.); skgus9506@dgu.ac.kr (N.-H.A.); dahee1546@dgu.ac.kr (S.-B.C.); ykwon@dgu.ac.kr (Y.K.)

* Correspondence: shyang@dongguk.edu; Tel.: +82-31-961-5156

Abstract: Alzheimer's disease (AD) is a neurodegenerative disease characterized by severe brain damage and dementia. There are currently few therapeutics to treat this disease, and they can only temporarily alleviate some of the symptoms. The pathogenesis of AD is mainly preceded by accumulation of abnormal amyloid beta ($A\beta$) aggregates, which are toxic to neurons. Therefore, modulation of the formation of these abnormal aggregates is strongly suggested as the most effective approach to treat AD. In particular, numerous studies on natural products associated with AD, aiming to downregulate $A\beta$ peptides and suppress the formation of abnormal $A\beta$ aggregates, thus reducing neural cell death, are being conducted. Generation of $A\beta$ peptides can be prevented by targeting the secretases involved in $A\beta$ -peptide formation (secretase-dependent). Additionally, blocking the intra- and intermolecular interactions of $A\beta$ peptides can induce conformational changes in abnormal $A\beta$ aggregates, whereby the toxicity can be ameliorated (structure-dependent). In this review, AD-associated natural products which can reduce the accumulation of $A\beta$ peptides via secretase- or structure-dependent pathways, and the current clinical trial states of these products are discussed.

Keywords: Alzheimer's disease; natural products; amyloid beta; secretase-dependent; structure-dependent



Citation: Lee, J.-H.; Ahn, N.-H.; Choi, S.-B.; Kwon, Y.; Yang, S.-H. Natural Products Targeting Amyloid Beta in Alzheimer's Disease. *Int. J. Mol. Sci.* **2021**, *22*, 2341. <https://doi.org/10.3390/ijms22052341>

Academic Editors: Satoshi Saito, Kenjiro Ono and Masashi Tanaka

Received: 30 January 2021
Accepted: 23 February 2021
Published: 26 February 2021

Publisher's Note: MDPI stays neutral with regard to jurisdictional claims in published maps and institutional affiliations.



Copyright: © 2021 by the authors. Licensee MDPI, Basel, Switzerland. This article is an open access article distributed under the terms and conditions of the Creative Commons Attribution (CC BY) license (<https://creativecommons.org/licenses/by/4.0/>).

1. Introduction

Alzheimer's disease (AD) is the most common type of dementia and neurodegenerative disorder, characterized by severe loss of neural cells, eventually leading to the loss of memory. The exact cause of AD is still unknown, but abnormalities related to amyloid beta ($A\beta$) peptides, such as misfolded $A\beta$ aggregation, are observed in the brains of AD patients. During the progression of AD, $A\beta$ monomers aggregate into oligomers and fibrils, which are toxic to neural cells, thus causing brain damage [1]. These aggregates further accumulate in the brains of AD patients to form $A\beta$ plaques. The detailed mechanisms underlying the accumulation of these plaques have been investigated by many research groups [2,3], and it is certain that $A\beta$ deposition is generally observed in the brains of AD patients before the symptoms, such as loss of memory, fully manifest, except for the patients who are non-demented with Alzheimer's neuropathology (NDAN) [4,5].

$A\beta$ peptides are first produced through cleavage of amyloid precursor proteins (APPs). When APPs are synthesized in the brain, they then translocate to the plasma membrane and undergo specific endoproteolytic cleavages by α -, β -, and γ -secretases. Generally, APPs are processed via either of two pathways, amyloidogenic and non-amyloidogenic [2]. In the non-amyloidogenic pathway, APPs are cleaved by α -secretase, releasing the soluble N-terminal fragment (sAPP α) into the extracellular space and leaving the membrane-tethered C terminal fragment (CTF α , also called C83). CTF α undergoes intramembrane cleavage by γ -secretase, generating the extracellular P3 peptide and releasing the APP intracellular domain (AICD) to the cytosol [2]. In the amyloidogenic pathway, APPs are cleaved by β -secretase (also called beta-site amyloid precursor protein cleaving enzyme

(BACE)), which releases the soluble APP β (sAPP β) fragment into the extracellular space while leaving the rest of the protein (CTF β) on the plasma membrane. Further cleavage of CTF β by γ -secretase generates A β peptides, composed of 40–43 amino acids [6] (Figure 1). In the pathogenesis of AD, such as brain damage and cognitive impairment, A β peptides are abnormally aggregated and accumulated in the brain. Thus, these peptides in the brains of AD patients have been proposed as key targets for the treatment of AD.

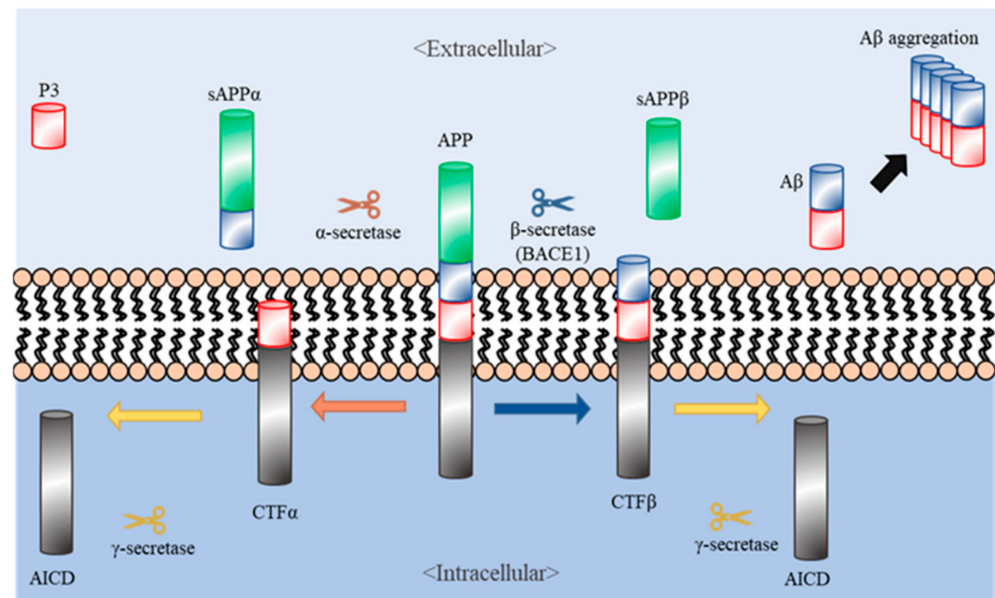


Figure 1. Amyloid precursor proteins (APP) and Alzheimer’s disease (AD). The left and right sides of the figure depict the non-amyloidogenic and amyloidogenic processing of APP (center), respectively. APP is cleaved by α - and γ -secretases, generating the products sAPP α , P3, and AICD (left side). Additionally, APP can be cleaved by β - (BACE1) and γ -secretases, generating the products sAPP β , AICD, and A β (right side). AD symptoms occur because of excessive aggregation of A β s (on the right).

For the past hundred years since AD was discovered, many global pharmaceutical companies have tried to develop drug candidates that can regulate abnormal A β aggregation. They have manufactured several synthetic compounds that inhibit the progression of A β -plaque formation, including LY2886721 [7], AN-1792 [8], and Verubecestat [9]. When these compounds were administered to patients with mild cognitive impairment (MCI), which is the pre-stage of AD, they have showed several good effects for pharmacological acceptability. However, obvious side effects, such as meningoencephalitis, neuronal hyperactivity, and liver toxicity, were observed in pre-clinical and clinical trials [7–9], and thus 99.6% of these products have been declared unfit for the treatment of AD. Recently, natural products have been probed to find safe and inexpensive therapeutics that are suitable for mass production and non-invasive treatment [10]. Development of such therapeutics using natural products is currently focused on the two different approaches—targeting the secretases related to A β aggregation or directly interfering with A β aggregates. In this review, we introduce several natural products, targeting various steps in each pathway, as potential therapeutics against AD.

2. Natural Products Targeting Secretases (Secretase-Dependent Approaches)

α -secretase cleaves APP at the transmembrane region. This region includes a disintegrin and metalloprotease (ADAM) domain, which are expressed on the surfaces of cells and anchored in the cell membrane. In most cases, α -secretase selectively targets ADAM10 [11]. As the cleavage of APPs by α -secretase results in the generation of the extracellular P3 peptide and intracellular AICD fragments without A β deposition in the non-amyloidogenic

pathway, increasing the activity of α -secretase has recently been considered as a therapeutic approach for the treatment of AD.

On the other hand, β -secretase, also called beta-site amyloid precursor protein cleaving enzyme (BACE), is a major factor involved in the production of A β peptides in the amyloidogenic pathway [2]. There are two types of BACE—BACE1 and BACE2, which have comparable structures. In the cleavage pattern of APP, the level of CTF β is more upregulated by the activation of BACE1 than the activation of BACE2 [12]. Several studies have reported that blocking of BACE1 ameliorates AD by suppressing A β production. In pre-clinical trials, BACE1-deficient mice did not exhibit cognitive impairment and accumulation of A β plaques [13]. Based on these results, many pharmaceutical companies have begun developing drug candidates that are derived from natural products with the preventive effect against AD by suppressing BACE1.

In general, α - and β -secretases are competitively activated during the process of APP cleavage in the brains of non-AD patients. The cleavage of APP by α -secretase precludes the production of A β in the brains of AD patients. Therefore, either increasing the α -secretase activity or decreasing the β -secretase activity is a very promising strategy to suppress the neuropathological changes associated with most of the symptoms [14,15]. In this section, we will introduce seven natural compounds that can regulate A β production in AD by modulating the activity of α - or β -secretase.

2.1. Ginsenoside Rg1

Ginsenosides are triterpene saponin (glycoside) components obtained from the root plant ginseng (*Panax ginseng*) and have been extensively used as a traditional medicine for thousands of years in East Asian countries. Several major functions of the ginsenosides contain pharmacological effects and improved immune systems including anti-aging, anti-stress, wound healing, antioxidant effects, and anti-inflammatory [16]. Ginsenosides have many species, but it is suggested that a few compounds, such as ginsenoside Rb1, Rb2, Rc, Rg1, and Rg3, are able to inhibit the acetylcholinesterase, which is one of the main neurotransmitters in the synaptic neurons of the brain, and butyrylcholinesterase, and therefore have potential for therapy of AD [17]. Ginsenoside Rg1 (Figure 2), especially proven as noticeable extracts compounds for the ingredients of AD treatments, mainly targets the activation of the transcription factor PPAR- γ through binding to the *BACE1* promoter instead of BACE1, eventually leading to the prevention of the formation of toxic A β aggregates. In addition, it is reported that ginsenoside Rg1 at the range of 0.25 to 25 μ M increases the level of α -secretase while decreasing the level of β -secretase up to 38% in N2a/APP695 cells (N2a cells transfected with the human APP gene) by regulating the level of CTF α and CTF β , respectively [18]. The level of A β in the cerebra of transgenic AD mice over-expressing APPs at age of 6 months (developing A β deposits in the brain) are significantly reduced concomitant with improvement in the cognitive deficit of the mice, after injecting them with ginsenoside Rg1 (10 mg/kg) for three months [18,19]. However, clinical trials with positive results have not been reported yet.

2.2. 2,2',4'-Trihydroxychalcone (TDC)

TDC (Figure 3) is a natural product extracted from *Glycyrrhiza glabra* and belongs to the chalcone family of compounds. *Glycyrrhiza glabra* is common called licorice root in plant native of Asia and included pea family. This compound is known to have antiviral, anti-diabetic, antioxidant, and anti-inflammatory bioactivities [20]. Additionally, TDC has neuroprotective effects both in vitro and in vivo. In vitro, TDC decreases the levels of the BACE1 products sAPP β and CTF β in a concentration dependent manner, finally leading to the reduction of A β 40 and A β 42 levels. However, TDC has no effect on α - or γ -secretase activity. In vivo studies conducted administering TDC to two APP/PS1 mouse groups at a concentration of 9 mg/kg/day and 3 mg/kg/day. APP/PS1 AD mice, one of the AD mice models, and wild type mouse groups were administrated with vehicle. After 100 days injection, the cognitive abilities of all of mouse were progressed to the Morris Water Maze

test. The results observed that memory impairment was alleviated when the dose was high. When higher dose administered, memory impairment was alleviated. Furthermore, no side effect, such as significant body loss, was observed in another animal trial with TDC administration, suggesting that TDC has no obvious toxicity in these animals [21]. However, little is known about the detail mechanism between BACE1 and TDC, and there is still a few of clinical trials targeting only AD's with extracts of these ingredients.

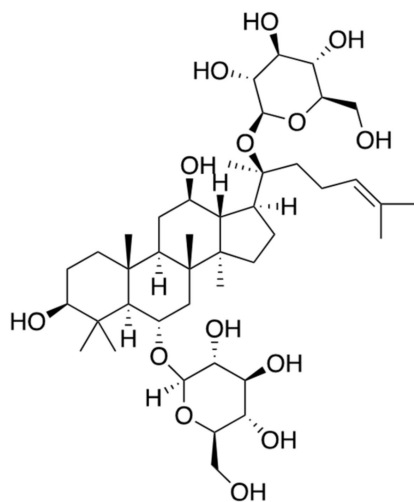


Figure 2. Chemical structure of ginsenoside Rg1.

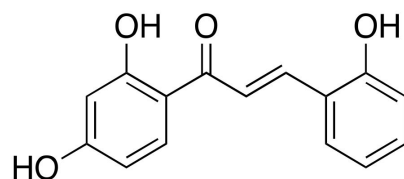


Figure 3. Chemical structure of 2,2',4'-trihydroxychalcone (TDC).

2.3. Hispidin

Hispidin (Figure 4) is extracted from the fungus *Phellinus linteus*; it is a classified fungus. This natural compound is known as an antioxidant that eliminates toxic free radicals such as reactive oxygen and nitrogen species [22]. Additionally, it has been found to function as an inhibitor of BACE1 in a concentration-dependent manner without affecting the activities of α - and γ -secretases. This enzyme assay was conducted with a 50% inhibition concentration (IC_{50}) is 4.0×10^{-5} through a kit from PanVera, WI, USA. Hispidin also improves learning and memory by suppressing vasopressin, substance P, and thyrotropin-releasing hormone, thereby affecting the levels of neuropeptides in the brain. However, hispidin is not small enough to pass through the blood–brain barrier (BBB) [23]. Therefore, further investigation for a small hispidin derivative with the same BACE1-inhibitory effect as that of hispidin is needed.

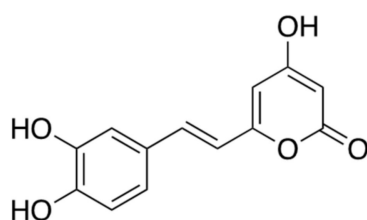


Figure 4. Chemical structure of hispidin.

2.4. Berberine

Berberine (Figure 5) is an isoquinoline alkaloid extracted from *Coptidis rhizoma*, *Berberis vulgaris* L. [24,25]. This plant is included the flowering plant which is family of Ranunculaceae. It is generally used in Chinese herbal medicine for its anti-diarrheal, antimicrobial, and anti-inflammatory effects. In addition, Berberine is known to have a significant inhibitory activity against acetylcholinesterase. Acetylcholine is found at mainly neuromuscular junctions and in cholinergic-type chemical synapses, where it functions to terminate synaptic transmission. It is the primary target of inhibition by organophosphorus compounds, such as nerve agents, and acetylcholinesterase inhibitors are currently the available drugs used for the treatment of AD. Extracellular A β level was reduced by the treatment of berberine (IC₅₀ = 5 μ M and 50 μ M) in cultured medium of APPNL-H4 cells, one of neuroglioma cell. Berberine treatment effectively reduced levels of A β ₄₀ (47.1 \pm 11.5% at 5 μ M; 35.5 \pm 8.1% at 50 μ M) and A β ₄₂ (49.1 \pm 13.6% at 5 μ M; 35.3 \pm 10.2% at 50 μ M); its 50% inhibition concentration (IC₅₀) for extracellular A β production was around 5 μ M [25]. When 25 mg/kg per day and 100 mg/kg per day for 4 months were administered by gavage in the AD transgenic mice at the age of 2 months, cognitive impairment was mitigated without increasing BACE1 levels [24]. Another animal trial was conducted with twenty-four male New Zealand white rabbits. A fresh suspension in saline solution of berberine chloride (50 mg/kg and 100 mg/kg) was administered intragastrically once daily for 14 days. In the brain of an aged AD rabbit model, berberine also reduces the BACE1 activity, thereby clearing the A β deposition, concurrent with improvement in the behavioral symptoms, such as head-tilting, tremor, weight loss, and paralysis [26,27]. Additional studies on animals have reported that berberine can help to manage type 2 diabetes and high blood cholesterol level, which are both contributing factors to accelerated aging and AD. Many research groups have suggested that berberine could be explored for use in AD patients. Clinical trials are reported to treat AD using berberine (Clinical trial ID. NCT03221894), but the results are not fully known, so more specific plans are needed.

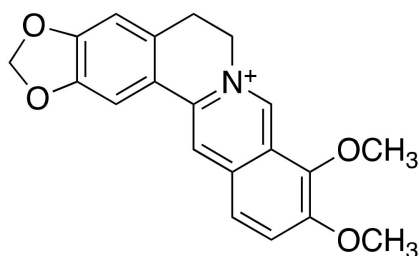


Figure 5. Chemical structure of berberine.

2.5. Ligustilide

Ligustilide (Figure 6) is a secondary metabolite which is derived from the *Ligusticum chuanxiong* Hort., belonging to *Umbelliferae* family of medicinal plants. It has been known to have an anti-inflammatory effect by inhibiting the secretion of TNF- α , which is one of the major proinflammatory cytokines, and TNF- α -induced nuclear factor (NF)- κ B activation [28]. Several studies have demonstrated that ligustilide has a significant neuroprotective activity against brain damage in various stroke models and alleviates the cognitive deficit in a chronic cerebral hypoperfusion model [29,30]. Moreover, oral administration of ligustilide treatment with 10 or 40 mg/kg for 8 weeks ameliorates the neurotoxicity of A β in APP/PS1 mice, one of AD transgenic mice models [31]. Another research has suggested that ligustilide promotes the non-amyloidogenic processing of APP in vitro and in vivo by increasing the activity of α -secretase to cleave full-length APP. It ensures to target only ADAM10, without affecting the other proteins involved in APP cleavage. In another behavioral study with the APP/PS1 AD mouse model in comparison with wild type mice, oral administration of ligustilide with 30 mg/kg improved the neurobehavioral deficits. In addition, ligustilide treatment increased the ADAM10 levels and activity in APP/PS1 AD mice, consequently promoting the non-amyloidogenic

pathway [32]. Relevant results of clinical trials have been rarely reported yet (Clinical trial ID. NCT01221662), but the neuroprotective effect of ligustilide through downregulation of A β aggregates and the consequent cognitive improvement strongly suggests that this natural compound is a potential therapeutic candidate against AD.

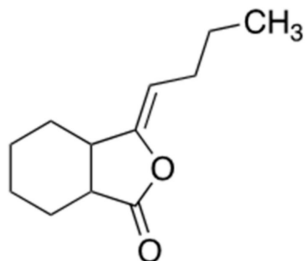


Figure 6. Chemical structure of ligustilide.

2.6. Epigallocatechin-3-Gallate (EGCG)

Epigallocatechin-3-gallate (EGCG) (Figure 7) is one of the most abundant compounds derived from green tea (*Camellia sinensis* leaf). The polyphenol structure of EGCG has been studied numerously for the treatment of neurodegenerative disorders including AD [33]. It has been proven to increase the secretion of α -secretase, thereby preventing the formation of abnormal A β aggregates [34]. Moreover, it prevents the amyloidogenic pathway by reducing the activity of β -secretase, which promotes abnormal aggregation of A β [35]. Pre-clinical trials using the APP/PS1 AD mouse model including oral administration of EGCG (50 mg/kg) have confirmed that it reduces the abnormal aggregation of A β in the brain and EGCG, which has been proven as the strong inhibitor of A β aggregation [36], is currently in phase 3 clinical trial. (Clinical trial ID. NCT00951834)

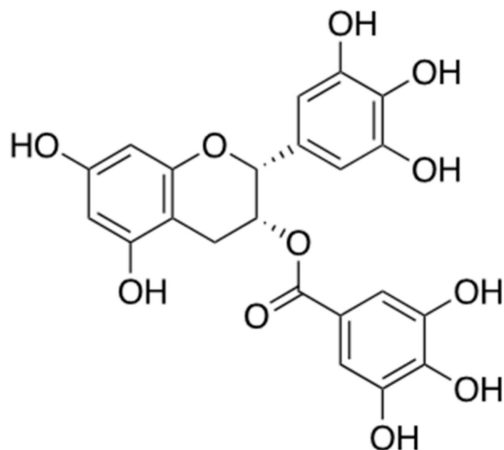


Figure 7. Chemical structure of epigallocatechin-3-gallate (EGCG).

2.7. Polymethoxyflavones

Polymethoxyflavones (Figure 8), which have been widely used for the management of allergy or viral infections, are secondary metabolites extracted from the black ginger (*Kaempferia parviflora*) or citrus peels. Recently studies showed that they have more effects such as antioxidant, anti-fatigue, antiviral, anti-allergenic, and anti-mutagenic effects [37]. They consist of the three of major compounds: 5,7-dimethoxyflavone (DMF), 5,7,4'-trimethoxyflavone (TMF), and 3,5,7,3',4'-pentamethoxyflavone (PMF). These three molecules have a common structure, which comprises two methoxy groups at C-5 and C-7 of the A ring in polymethoxyflavones that contributes to the inhibition of BACE1. In addition, the methoxy group at C-4' on the B ring of 5,7,4'-trimethoxyflavone can particularly increase the inhibitory effect on BACE1. Any of these three compounds can bind to a particular regulatory site on BACE1, subsequently reducing the enzymatic function

of this secretase in the amyloidogenic pathway [38]. Moreover, they do not affect the activities of other enzymes, such as α -secretase and serine protease, while inhibiting the BACE1-related amyloidogenesis. However, there are few clinical trials on the use of the polymethoxyflavones from *Kaempferia parviflora* against AD.

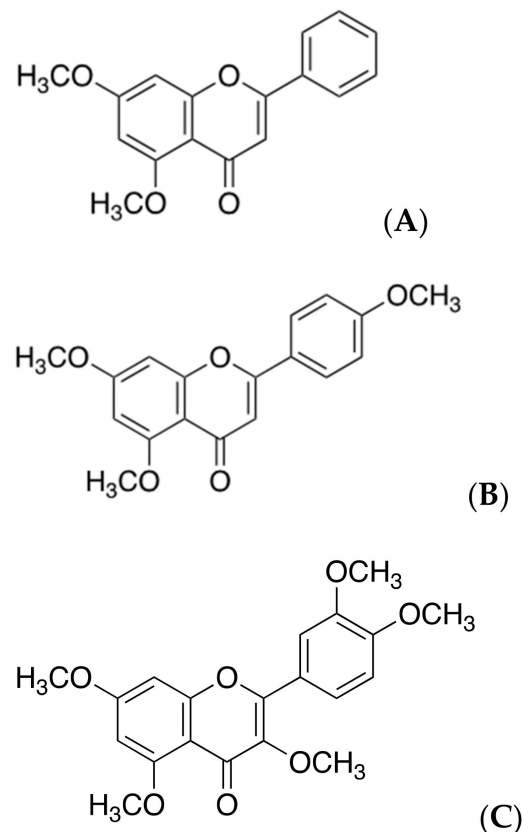


Figure 8. Chemical structures of polymethoxyflavones. Structures of (A) 5,7-methoxyflavone (DMF), (B) 5,7,4'-trimethoxyflavone (TMF), and (C) 3,5,7,3',4'-pentamethoxyflavone (PMF).

3. Natural Products Targeting Abnormal A β Aggregates (Structure-Dependent Approaches)

During AD progression, A β peptides aggregate into oligomers, protofibrils, and fibrils that are heterogeneous in size and structure. A common feature of all these aggregates is the formation of cross- β structures, which are extended β -sheets with two β -strands aligned in horizontal orientation to the fibril axis [39–41]. Each β -strand has intramolecular hydrophobic interactions between the hydrophobic core domain (residues 16–20, KLVFF) and the hydrophobic C-terminus of A β peptides, and intermolecular hydrogen bonding among the β -sheets [42–44]. Phenylalanine 19 (F19) and 20 (F20) residues in the hydrophobic core domain are essential for these interactions because these two residues are hydrophobic and aromatic [40,45]. The hydrophobicity is thought to be the primary driving force of abnormal A β aggregation, which might be supported by the aromaticity [46,47] (Figure 9). Thus, targeting F19 and F20 residues of A β may be important to change the structure of A β aggregates and reduce the associated toxicity.

In the following section, we will introduce five natural compounds whose phenyl rings target the phenylalanine residues in the hydrophobic core domain of A β . These compounds all form hydrophobic interactions or hydrogen bonds with A β , consequently destroying common structure of A β fibrils and preventing its toxicity on AD.

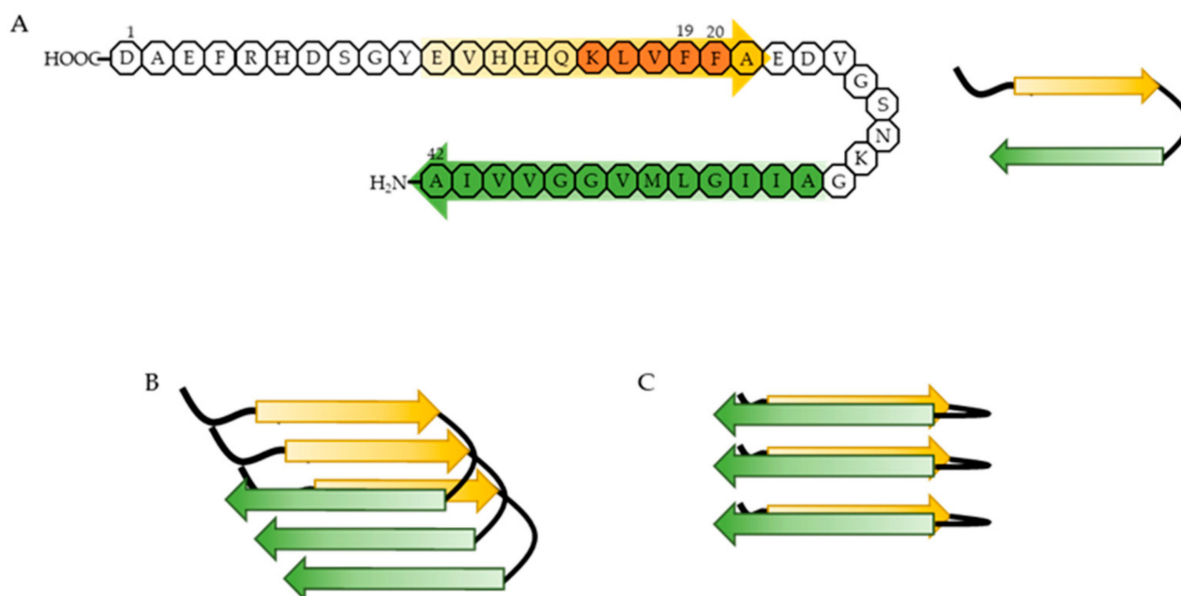


Figure 9. Proposed mechanism of abnormal A β aggregation. (A) A β 1-42 forms a β -hairpin, including two β -strands. One of the strands is composed of residues 11–24 (yellow arrow) and contains the hydrophobic core domain (orange domain), and the other is composed of residues 30–42 (green arrow), regarded as the hydrophobic C-terminus. The hydrophobic core domain and the hydrophobic C-terminus have hydrophobic interactions. (B) A β in its β -hairpin conformation aggregates into soluble A β oligomers and forms β -sheets via intermolecular hydrogen bonding. (C) Soluble A β oligomers undergo a conformational change into an insoluble form with typical cross- β structure via intermolecular hydrogen bonding.

3.1. Resveratrol

Resveratrol (Figure 10) is a polyphenol stilbene abundantly found in many edible plants, such as grapes (*Vitis vinifera*) of the *Vitaceae* family and peanuts (*Arachis hypogaea*) of the *Arachis* family. It has neuroprotective as well as anti-inflammatory and antioxidant effects and thus may be useful in the treatment of AD [48,49]. Resveratrol decreases the formation of A β plaques [50–52] and lowers their toxicity in various ways, but the underlying mechanisms are still unclear. Although resveratrol initially accelerates the formation of A β fibrils with low toxicity via hydrophobic interaction between its phenolic ring and A β hydrophobic domain, these fibrils then undergo conformational changes into unstructured aggregates by the self-stacking of aromatic residues in A β core domain, consequently reducing the level of aggregation. Resveratrol is also known to suppress the phosphatidylinositol 3-kinase/protein kinase B signaling pathway in addition to having other effects [53,54] that are closely linked to AD, such as the reduction of the amount of A β aggregates or A β toxicity. In clinical trials for the treatment of AD, oral administration of low doses resveratrol (5 mg/day) was found safe and well tolerated, but less effective on ameliorating pathology of AD (Clinical trial ID. NCT00678431) [55]. Therefore, further research on the use of resveratrol as a therapeutic candidate against AD and on the signaling pathways involved in the anti-AD effect of resveratrol are needed.

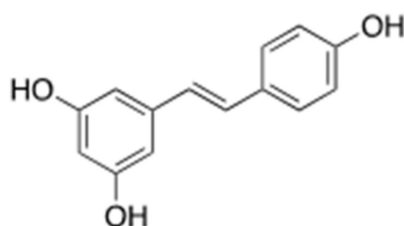


Figure 10. Chemical structure of resveratrol.

3.2. Brazilin

Brazilin (Figure 11) is a major compound that can be obtained from the Sappan wood (*Caesalpinia sappan*). It has been used as a red dye in the Middle Ages but has recently been studied to prevent abnormal A β aggregation [56]. It is suggested that brazilin can inhibit the fibrillogenesis of A β and decrease the cytotoxicity. Moreover, brazilin has a role in remodeling the mature fibril of A β into non-functional structures. This structural change of A β is related to their interactions with chemical structures and residues of brazilin. Brazilin has four hydroxyl groups, which have a powerful hydrophobic interaction with the phenyl ring in F20 of A β . This interaction results in ≥ 10 hydrogen bonds and causes conformational changes in A β , consequently lowering the neuronal toxicity of A β . Through molecular dynamics simulations, it can be also verified that direct binding between brazilin and L17, F19, F20, and K28 residues in the hydrogen bonds of A β is observed in A β pentamer fibril structures [57]. Therefore, numerous studies aiming to improve the neuroprotective effects of brazilin and possibility of development as the drug of AD have been conducting but reports of clinical trials released positive results does not appear to have been registered yet.

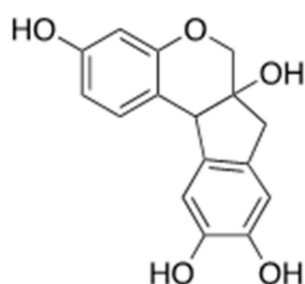


Figure 11. Chemical structure of brazilin.

3.3. Curcumin

Curcumin (Figure 12), one of the polyphenol compounds, is the primary curcuminoid compared with other secondary metabolites, demethoxycurcumin and bis-demethoxycurcumin, produced by turmeric (*Curcuma longa*) of the ginger family (*Zingiberaceae*). It is usually used against AD in the oriental traditional medicine [58]. Two feruloyl groups of curcumin structurally resemble phenylalanine [59] and thus interact with the hydrophobic core domains of A β oligomers [60,61]. Curcumin at the concentration of 1 μ M hydrophobically interacts with F19 and F20 in the hydrophobic core domain of A β . At high concentrations (15 μ M), it forms hydrogen bonds with the hydrophobic core domain of A β in addition to F19-F20 hydrophobic interaction [60]. The interaction of curcumin with A β oligomers does not suppress A β aggregation but disrupts their β -sheet structure, thereby alleviating their toxicity [61]. Curcumin shows bioactivity in vitro, such as anti-oxidant and anti-amyloid effects [60–62], and in Tg2576 APPSw transgenic mouse, one of the AD mouse models, fed curcumin (1–8 μ M) [62,63]. However, oral administration of curcumin (each 2 g/day or 4 g/day) has no effect on the formation of A β aggregates in AD patients (Clinical trials ID. NCT00099710) [58]. This result may be due to the short half-life and low bioavailability of curcumin. Thus, further research about other curcumin preparations should be performed to use this natural compound as a therapeutic against AD.

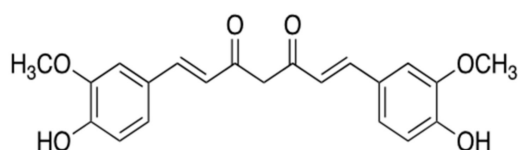


Figure 12. Chemical structure of curcumin.

3.4. Tannic Acid

Tannic acid (Figure 13) is generally found in the galls of *Quercus* species, for example, aleppo oak (*Quercus infectoria*) and golden oak (*Quercus alnifolia*) of the *Fagaceae* family. It accumulates in large amounts in specific tissues and organs, such as barks, fruits, leaves, or roots. It is a type of polyphenol with aromatic residues and is known to interact with A β fibrils, whereby the formation of these fibrils is inhibited [40,45]. Although the underlying mechanism is still unclear, it is certain that the aromatic residues of tannic acid undergo aromatic stacking with the hydrophobic domain of A β . Tannic acid may bind to the extending soluble A β oligomers as well as fibrils. It destabilizes the conformation of A β fibrils and promotes the depolymerization of A β into non-toxic or toxic species in vitro polymerization assay [64–66]. Even if toxic oligomers are formed, tannic acid can reduce A β toxicity via its anti-toxic bioactivity. Additionally, tannic acid can bind to A β monomers and consequently prevent their polymerization into fibrils [65]. Although, the effect of tannic acid in clinical trials with AD patients is not widely conducted yet, it mostly prevents the development of AD by reducing the levels of reactive oxygen species and abnormal A β aggregates via its antioxidant and anti-amyloidogenic activities in vivo [67].

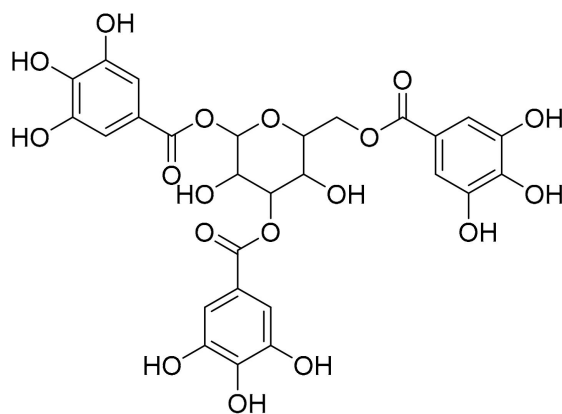


Figure 13. Chemical structure of tannic acid.

3.5. Theaflavin

Theaflavin (Figure 14) is a group of polycyclic polyphenols extracted during the fermentation of tea into black tea. This polycyclic phenol has a higher bioavailability than other types of polyphenols extracted from other plants. Several studies have revealed that theaflavin has protective effects in neurodegenerative diseases, including AD and Parkinson's disease, in addition to its antioxidant and antiapoptotic effects [68,69]. Theaflavin interferes with the formation of A β oligomers and fibrils early during AD development. It binds to the non-polar hydrophobic amino acids in the hydrophobic core domain and hydrophobic C-terminus of A β . These interactions are based on hydrophobic interaction rather than sequence specificity [69]. Consequently, theaflavin prevents the formation of toxic A β aggregates and induces the remodeling of misfolded A β aggregates into new types of A β structures, which are spherical or amorphous aggregates. These A β aggregates with new structural conformations establish self-interactions among their hydrophobic core domains, eventually inhibiting the formation of cross- β structures of A β in vitro. Moreover, 15 μ M of theaflavin can reduce the toxicity of abnormal A β aggregates in neural cells and cause conformational changes in preformed A β fibrils into other A β structures without neural cytotoxicity in neuronal cell culture [51,70]. Additionally, theaflavin can maintain its anti-amyloidogenic activity even after oxidation through prolonged exposure to air [68]. Accordingly, several studies have hypothesized that theaflavin might be used as a potent therapeutic for the treatment of AD. However, to date, few clinical trials for the use of theaflavin against AD have been reported.

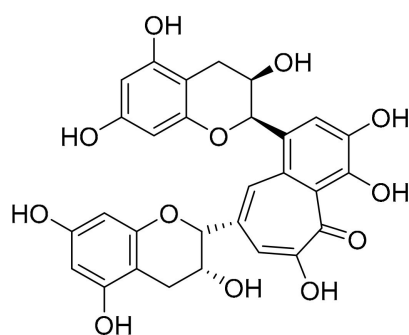


Figure 14. Chemical structure of theaflavin.

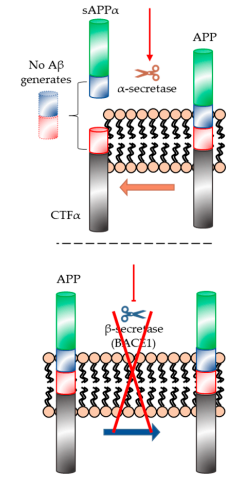
4. Discussion

Here, we compared the effects and structures of the natural products that can modulate either of the two APP processing pathways (secretase- or structure-dependent) on the formation of the A β aggregates in AD and summarized the states of the corresponding clinical trials (Tables 1 and 2). Natural products are expected to be less hazardous than synthetic compounds because such products have existed naturally and been utilized in traditional medicine for a long time [71,72]. Given the importance of A β in AD, numerous studies are centered on the molecular mechanisms underlying AD and related interventions. Natural products are especially studied as drug candidates for the treatment of AD. Above all, reducing the amount of abnormal A β aggregates, a typical phenomenon in AD patients, is the major aim in using natural products against AD.

Several natural products targeting the secretase-dependent mechanisms in the formation of abnormal A β aggregates affect the stimulation of the ADAM family of proteins (especially α -secretase) or the inhibition of BACE1 (also called β -secretase) during both amyloidogenic and non-amyloidogenic pathways in the cleavage of APP, thereby modulating the formation of these aggregates. As α - and β -secretases are commonly activated competitively in the APP-cleavage process, this competition can control the A β accumulation and alleviate the cognitive impairment in AD. This competitive mechanism is skewed toward the activation of α -secretase over β -secretase by natural products such as ginsenoside Rg1, TDC, hispidin, berberine, ligustilide, EGCG, and polymethoxyflavones. The structure-dependent pathway involves the interaction of natural products such as resveratrol, brazilin, curcumin, tannic acid, and theaflavin with misfolded A β structures to induce conformational changes in these structures. The interaction of such a natural product with the hydrophobic core domain of A β disrupts the cross- β conformation, altering the A β structure and thereby lowering the A β -induced neuronal toxicity.

As the studies that prove the efficacy of natural products increase, these compounds are increasingly suggested as therapeutic candidates against AD [10,73]. However, there are several drawbacks that need to be overcome to use a substance from nature as a medicine. The molecular weight of such natural products should be as small as possible. Compounds with high molecular weight cannot pass through the BBB. Additionally, they must be small enough to be absorbed by the body and to be properly activated in the cerebrum. However, most natural substances, such as TDC, have high molecular weight [20]. Therefore, technical approaches to derive small natural products (≤ 400 dalton) that can cross the BBB need to be developed. In addition, natural products must be mass-produced through the gene recombination technology to be utilized as commercial and global medicines. Moreover, as natural products include numerous substances with various functions for therapeutic properties, it is necessary to separate the single leading compounds which are specific to AD. Further investigation is needed to isolate and identify a specific single compound in natural products targeting abnormal aggregation of A β .

Table 1. The information of natural products targeting secretase-dependent ways in AD treatment.

| Mechanism | Name (Origin) | ID | Concentration | Group | Time Span | Administration | Clinical Trial |
|--|--|-------------|---|---|-----------|--|---|
| <p>Targeting to BACE1 or α-secretase (secretase-dependent ways)</p>  | Ginsenoside Rg1 (<i>Panax ginseng</i>) | - | - | - | - | - | Improvement of level A β in the transgenic AD mice, but clinical trials with patients was not reported yet. |
| | 2,2',4'-Trihydroxychalcone (TDC) (<i>Glycyrrhiza glabra</i>) | - | - | - | - | - | Have no known clinical trials. |
| | Hispidin (<i>Phellinus linteus</i>) | - | - | - | - | - | Ongoing trial is not reported yet. |
| | Berberine (<i>Coptidis rhizoma</i>) | NCT03221894 | Donepezil: 5~10 mg Berberine: 10 g/d | Donepezil group and Donepezil + grape granule group | 12 months | Each bag of granules with 150 mL warm water melt was taken orally twice a day. | Currently little planned or ongoing clinical trials. |
| | Ligustilide (<i>Ligusticum chuanxiong Hort.</i>) | - | - | - | - | - | Clinical trials have been rarely reported yet. |
| | Epigallocatechin-3-galate (EGCG) (<i>Camellia sinensis leaf</i>) | NCT00951834 | EGCG: 200~800 mg/day (dependent on intake period) | Single group assignment (21 people) | 18 months | Co-medication with donepezil | in phase 3 |
| | Polymethoxyflavones (<i>Kaempferia parviflora</i>) | - | - | - | - | - | It is reported that there are not enough clinical trials using this. |

Hyperphosphorylation of tau proteins is another hallmark of AD. The hyperphosphorylation of tau proteins generates paired helical and straight microtubule filaments (SF) [74,75], which consequently aggregate to form neurofibrillary tangles in neurodegenerative disorders, including AD.

Additionally, activation of astrocytes and microglia have been observed in the regions of A β plaques and neurofibrillary tangles in the brains of AD patients, concurrent with elevated inflammatory cytokine and chemokine levels, suggesting that neuroinflammation is also one of the major causes of AD pathogenesis [76,77]. Taken altogether, it is necessary to identify natural products that modulate both the A β and tau abnormalities as well as neuroinflammation in AD.

Author Contributions: J.-H.L. and S.-H.Y. conceived the concept and made a major contribution in all of manuscript. S.-B.C. and N.-H.A. assisted and collected the information of data. All the authors contributed to the writing of the manuscript. Y.K. drew the structures of the natural products by using the ChemDraw software. All authors have read and agreed to the published version of the manuscript.

Funding: This research was supported by the Basic Science Research Program of the National Research Foundation of Korea (NRF), funded by the Ministry of Education, Science and Technology (2015R1A6A3A04058568), and by a National Research Foundation of Korea (NRF) grant, funded by the government of Korea (MSIT, 2020R1F1A1076240).

Acknowledgments: The authors thanks to Sung-Chul Hong (Natural Product Informatics Research Center, Korea Institute of Science and Technology (KIST), Gangneung 25451, Republic of Korea) for scientific advice.

Conflicts of Interest: The authors declare no conflict of interest.

References

1. Yang, S.H.; Lee, D.K.; Shin, J.; Lee, S.; Baek, S.; Kim, J.; Jung, H.; Hah, Y.; Kim, J.M. Nec-1 alleviates cognitive impairment with reduction of A β and tau abnormalities in APP/PS1 mice. *EMBO Mol. Med.* **2017**, *9*, 61–77. [[CrossRef](#)]
2. Chen, G.F.; Xu, T.H.; Yan, Y.; Zhou, Y.R.; Jiang, Y.; Melcher, K.; Xu, H.E. Amyloid beta: Structure, biology and structure-based therapeutic development. *Acta Pharmacol. Sin.* **2017**, *38*, 1205–1235. [[CrossRef](#)]
3. Acx, H.; Serneels, L.; Radaelli, E.; Muyltermans, S.; Vincke, C.; Pepermans, E.; Muller, U.; Chavez-Gutierrez, L.; De Strooper, B. Inactivation of gamma-secretases leads to accumulation of substrates and non-Alzheimer neurodegeneration. *EMBO Mol. Med.* **2017**, *9*, 1088–1099. [[CrossRef](#)]
4. Zolochowska, O.; Tagliatela, G. Non-Demented Individuals with Alzheimer's Disease Neuropathology: Resistance to Cognitive Decline May Reveal New Treatment Strategies. *Curr. Pharm. Des.* **2016**, *22*, 4063–4068. [[CrossRef](#)]
5. Briley, D.; Ghirardi, V.; Woltjer, R.; Renck, A.; Zolochowska, O.; Tagliatela, G.; Micci, M.A. Preserved neurogenesis in non-demented individuals with AD neuropathology. *Sci. Rep.* **2016**, *6*, 27812. [[CrossRef](#)] [[PubMed](#)]
6. Cole, S.; Vassar, L.R. The Alzheimer's disease beta-secretase enzyme, BACE1. *Mol. Neurodegener.* **2007**, *2*, 22. [[CrossRef](#)] [[PubMed](#)]
7. Satir, T.M.; Agholme, L.; Karlsson, A.; Karlsson, M.; Karila, P.; Illes, S.; Bergstrom, H.; Zetterberg, P. Partial reduction of amyloid beta production by beta-secretase inhibitors does not decrease synaptic transmission. *Alzheimers Res. Ther.* **2020**, *12*, 63. [[CrossRef](#)] [[PubMed](#)]
8. Song, G.; Yang, H.; Shen, N.; Pham, P.; Brown, B.; Lin, X.; Hong, Y.; Sinu, P.; Cai, J.; Li, X.; et al. An Immunomodulatory Therapeutic Vaccine Targeting Oligomeric Amyloid-beta. *J. Alzheimers Dis.* **2020**, *77*, 1639–1653. [[CrossRef](#)] [[PubMed](#)]
9. Egan, M.F.; Kost, J.; Tariot, P.N.; Aisen, P.S.; Cummings, J.L.; Vellas, B.; Sur, C.; Mukai, Y.; Voss, T.; Furtek, C.; et al. Randomized Trial of Verubecestat for Mild-to-Moderate Alzheimer's Disease. *N. Engl. J. Med.* **2018**, *378*, 1691–1703. [[CrossRef](#)] [[PubMed](#)]
10. Xiao, Z.; Morris-Natschke, S.L.; Lee, K.H. Strategies for the Optimization of Natural Leads to Anticancer Drugs or Drug Candidates. *Med. Res. Rev.* **2016**, *36*, 32–91. [[CrossRef](#)]
11. Yuan, X.Z.; Sun, S.; Tan, C.C.; Yu, L.; Tan, J.T. The Role of ADAM10 in Alzheimer's Disease. *J. Alzheimers Dis.* **2017**, *58*, 303–322. [[CrossRef](#)] [[PubMed](#)]
12. Ahmed, R.R.; Holler, C.J.; Webb, R.L.; Li, F.; Beckett, T.L.; Murphy, M.P. BACE1 and BACE2 enzymatic activities in Alzheimer's disease. *J. Neurochem.* **2010**, *112*, 1045–1053. [[CrossRef](#)] [[PubMed](#)]
13. Hu, X.; Das, B.; Hou, H.; He, W.; Yan, R. BACE1 deletion in the adult mouse reverses preformed amyloid deposition and improves cognitive functions. *J. Exp. Med.* **2018**, *215*, 927–940. [[CrossRef](#)]
14. Tyler, S.J.; Dawbarn, D.; Wilcock, G.K.; Allen, S.J. alpha- and beta-secretase: Profound changes in Alzheimer's disease. *Biochem. Biophys. Res. Commun.* **2002**, *299*, 373–376. [[CrossRef](#)]

15. Ameen-Ali, K.E.; Wharton, S.B.; Simpson, J.E.; Heath, P.R.; Sharp, P.; Berwick, J. Review: Neuropathology and behavioural features of transgenic murine models of Alzheimer's disease. *Neuropathol. Appl. Neurobiol.* **2017**, *43*, 553–570. [[CrossRef](#)]
16. Bai, L.T.; Gao, J.L.; Wei, F.; Zhao, J.; Wang, D.W.; Wei, J.P. Therapeutic Potential of Ginsenosides as an Adjuvant Treatment for Diabetes. *Front. Pharmacol.* **2018**, *9*, 423. [[CrossRef](#)]
17. Choi, R.J.; Roy, A.; Jung, H.J.; Ali, M.Y.; Min, B.S.; Park, C.H.; Yokozawa, T.; Fan, T.P.; Choi, J.S.; Jung, H.A.; et al. BACE1 molecular docking and anti-Alzheimer's disease activities of ginsenosides. *J. Ethnopharmacol.* **2016**, *190*, 219–230. [[CrossRef](#)]
18. Li, F.L.; Wu, X.Q.; Li, J.; Niu, Q.L. Ginsenoside Rg1 ameliorates hippocampal long-term potentiation and memory in an Alzheimer's disease model. *Mol. Med. Rep.* **2016**, *13*, 4904–4910. [[CrossRef](#)]
19. Fang, F.; Chen, X.C.; Huang, T.W.; Lue, L.F.; Luddy, S.J.; Yan, S.S. Multi-faced neuroprotective effects of Ginsenoside Rg1 in an Alzheimer mouse model. *BBA-Mol. Basis Dis.* **2012**, *1822*, 286–292. [[CrossRef](#)]
20. Guo, J.; Liu, A.; Cao, H.; Luo, Y.; Pezzuto, J.M.; van Breemen, R.B. Biotransformation of the chemopreventive agent 2',4',4'-trihydroxychalcone (isoliquiritigenin) by UDP-glucuronosyltransferases. *Drug Metab. Dispos.* **2008**, *36*, 2104–2112. [[CrossRef](#)] [[PubMed](#)]
21. Zhu, Z.Y.; Li, C.J.; Wang, X.; Yang, Z.Y.; Chen, J.; Hu, L.H.; Jiang, X.; Shen, H.L. 2,2',4'-Trihydroxychalcone from *Glycyrrhiza glabra* as a new specific BACE1 inhibitor efficiently ameliorates memory impairment in mice. *J. Neurochem.* **2010**, *114*, 374–385. [[CrossRef](#)]
22. Park, I.H.; Chung, S.K.; Lee, K.B.; Yoo, Y.C.; Kim, S.K.; Kim, G.S.; Song, K.S. An antioxidant hispidin from the mycelial cultures of *Phellinus linteus*. *Arch. Pharm. Res.* **2004**, *27*, 615–618. [[CrossRef](#)]
23. Park, I.H.; Jeon, S.Y.; Lee, H.J.; Kim, S.I.; Song, K.S. A beta 5-secretase (BACE1) inhibitor hispidin from the mycelial cultures of *Phellinus linteus*. *Planta Med.* **2004**, *70*, 143–146.
24. Durairajan, S.S.; Liu, L.F.; Lu, J.H.; Chen, L.L.; Yuan, Q.; Chung, S.K.; Huang, L.; Li, X.S.; Huang, J.D.; Li, M.; et al. Berberine ameliorates beta-amyloid pathology, gliosis, and cognitive impairment in an Alzheimer's disease transgenic mouse model. *Neurobiol. Aging* **2012**, *33*, 2903–2919. [[CrossRef](#)] [[PubMed](#)]
25. Asai, M.; Iwata, N.; Yoshikawa, A.; Aizaki, Y.; Ishiura, S.; Saido, K.; Maruyama, T.C. Berberine alters the processing of Alzheimer's amyloid precursor protein to decrease Abeta secretion. *Biochem Biophys Res. Commun.* **2007**, *352*, 498–502. [[CrossRef](#)]
26. Panahi, N.; Mahmoudian, M.; Mortazavi, P.; Hashjin, G.S. Effects of berberine on beta-secretase activity in a rabbit model of Alzheimer's disease. *Arch. Med. Sci.* **2013**, *9*, 146–150. [[CrossRef](#)] [[PubMed](#)]
27. Cai, Z.; Wang, C.; He, W.; Chen, Y. Berberine Alleviates Amyloid-Beta Pathology in the Brain of APP/PS1 Transgenic Mice via Inhibiting beta/gamma-Secretases Activity and Enhancing alpha-Secretases. *Curr. Alzheimer Res.* **2018**, *15*, 1045–1052. [[CrossRef](#)] [[PubMed](#)]
28. Liu, L.; Ning, Z.Q.; Shan, S.; Zhang, K.; Deng, T.; Lu, X.; Cheng, P.; Phthalide, Y.Y. Lactones from *Ligusticum chuanxiong* inhibit lipopolysaccharide-induced TNF-alpha production and TNF-alpha-mediated NF-kappaB Activation. *Planta Med.* **2005**, *71*, 808–813. [[CrossRef](#)]
29. Kuang, X.; Du, J.R.; Liu, Y.X.; Zhang, G.Y.; Peng, H.Y. Postischemic administration of Z-Ligustilide ameliorates cognitive dysfunction and brain damage induced by permanent forebrain ischemia in rats. *Pharmacol. Biochem. Behav.* **2008**, *88*, 213–221. [[CrossRef](#)]
30. Peng, H.Y.; Du, J.R.; Zhang, G.Y.; Kuang, X.; Liu, Y.X.; Qian, Z.M.; Wang, C.Y. Neuroprotective effect of Z-ligustilide against permanent focal ischemic damage in rats. *Biol. Pharm. Bull.* **2007**, *30*, 309–312. [[CrossRef](#)]
31. Xu, Y.J.; Mei, Y.; Qu, Z.L.; Zhang, S.J.; Zhao, W.; Fang, J.S.; Wu, J.; Yang, C.; Liu, S.J.; Fang, Y.Q.; et al. Ligustilide Ameliorates Memory Deficiency in APP/PS1 Transgenic Mice via Restoring Mitochondrial Dysfunction. *Biomed. Res. Int.* **2018**, *2018*, 4606752. [[CrossRef](#)]
32. Kuang, X.; Zhou, H.J.; Thorne, A.H.; Chen, X.N.; Li, L.J.; Du, J.R. Neuroprotective Effect of Ligustilide through Induction of alpha-Secretase Processing of Both APP and Klotho in a Mouse Model of Alzheimer's Disease. *Front. Aging Neurosci.* **2017**, *9*, 353. [[CrossRef](#)]
33. Mereles, D.; Hunstein, W. Epigallocatechin-3-gallate (EGCG) for clinical trials: More pitfalls than promises? *Int. J. Mol. Sci.* **2011**, *12*, 5592–5603. [[CrossRef](#)] [[PubMed](#)]
34. Smith, A.; Giunta, B.; Bickford, P.C.; Fountain, M.; Tan, J.; Shytle, R.D. Nanolipidic particles improve the bioavailability and alpha-secretase inducing ability of epigallocatechin-3-gallate (EGCG) for the treatment of Alzheimer's disease. *Int. J. Pharmaceut.* **2010**, *389*, 207–212. [[CrossRef](#)] [[PubMed](#)]
35. Jeon, S.Y.; Bae, K.H.; Seong, Y.H.; Song, K.S. Green tea catechins as a BACE1 (beta-secretase) inhibitor. *Bioorg. Med. Chem. Lett.* **2003**, *13*, 3905–3908. [[CrossRef](#)]
36. Bao, J.; Liu, W.; Zhou, H.Y.; Gui, Y.R.; Yang, Y.H.; Wu, M.J.; Xiao, Y.F.; Shang, J.T.; Long, G.F.; Shu, X.J.; et al. Epigallocatechin-3-gallate Alleviates Cognitive Deficits in APP/PS1 Mice. *Curr. Med. Sci.* **2020**, *40*, 18–27. [[CrossRef](#)] [[PubMed](#)]
37. Ho, C.T.; Li, S.M. Polymethoxyflavones from citrus: Chemistry, metabolism and selected bioactivity. *Abstr. Pap. Am. Chem Soc.* **2019**, 258.
38. Youn, K.; Lee, J.; Ho, M.; Jun, C.T. Discovery of polymethoxyflavones from black ginger (*Kaempferia parviflora*) as potential beta-secretase (BACE1) inhibitors. *J. Funct. Foods.* **2016**, *20*, 567–574. [[CrossRef](#)]
39. Stroud, J.C.; Liu, C.; Teng, D.; Eisenberg, P.K. Toxic fibrillar oligomers of amyloid-beta have cross-beta structure. *Proc. Natl. Acad. Sci. USA* **2012**, *109*, 7717–7722. [[CrossRef](#)]

40. Ahmed, M.; Davis, J.; Aucoin, D.; Sato, T.; Ahuja, S.; Aimoto, S.; Elliott, J.I.; Van Nostrand, W.E.; Smith, S.O. Structural conversion of neurotoxic amyloid-beta(1-42) oligomers to fibrils. *Nat. Struct. Mol. Biol.* **2010**, *17*, 561–567. [[CrossRef](#)]
41. Paravastu, A.K.; Leapman, R.D.; Yau, R.; Tycko, W.M. Molecular structural basis for polymorphism in Alzheimer's beta-amyloid fibrils. *Proc. Natl. Acad. Sci. USA* **2008**, *105*, 18349–18354. [[CrossRef](#)]
42. Hoyer, W.; Gronwall, C.; Jonsson, A.; Stahl, S.; Hard, T. Stabilization of a beta-hairpin in monomeric Alzheimer's amyloid-beta peptide inhibits amyloid formation. *Proc. Natl. Acad. Sci. USA* **2008**, *105*, 5099–5104. [[CrossRef](#)]
43. Enache, T.A.; Chiorcea-Paquim, A.M.; Oliveira-Brett, A.M. Amyloid Beta Peptide VHHQ, KLVFF, and IIGLMVGGVV Domains Involved in Fibrilization: AFM and Electrochemical Characterization. *Anal. Chem.* **2018**, *90*, 2285–2292. [[CrossRef](#)]
44. Gao, Y.; Guo, C.; Watzlawik, J.O.; Randolph, P.S.; Lee, E.J.; Huang, D.; Stagg, S.M.; Zhou, H.X.; Rosenberry, T.L.; Paravastu, A.K.; et al. Out-of-Register Parallel beta-Sheets and Antiparallel beta-Sheets Coexist in 150-kDa Oligomers Formed by Amyloid-beta(1-42). *J. Mol. Biol.* **2020**, *432*, 4388–4407. [[CrossRef](#)]
45. Tamamis, P.; Adler-Abramovich, L.; Reches, M.; Marshall, K.; Sikorski, P.; Serpell, L.; Gazit, E.; Archontis, G. Self-assembly of phenylalanine oligopeptides: Insights from experiments and simulations. *Biophys. J.* **2009**, *96*, 5020–5029. [[CrossRef](#)] [[PubMed](#)]
46. Marshall, K.E.; Morris, K.L.; Charlton, D.; O'Reilly, N.; Lewis, L.; Walden, H.; Serpell, L.C. Hydrophobic, aromatic, and electrostatic interactions play a central role in amyloid fibril formation and stability. *Biochemistry* **2011**, *50*, 2061–2071. [[CrossRef](#)]
47. Korn, A.; McLennan, S.; Adler, J.; Krueger, M.; Surendran, D.; Maiti, D.; Huster, S. Amyloid beta (1–40) Toxicity Depends on the Molecular Contact between Phenylalanine 19 and Leucine 34. *ACS Chem. Neurosci.* **2018**, *9*, 790–799. [[CrossRef](#)]
48. Vitrac, X.; Bornet, A.; Vanderlinde, R.; Valls, J.; Richard, T.; Delaunay, J.C.; Merillon, J.M.; Teissedre, P.L. Determination of stilbenes (delta-viniferin, trans-astringin, trans-piceid, cis- and trans-resveratrol, epsilon-viniferin) in Brazilian wines. *J. Agric. Food Chem.* **2005**, *53*, 5664–5669. [[CrossRef](#)] [[PubMed](#)]
49. Bo, S.; Ciccone, G.; Castiglione, A.; Gambino, R.; De Michieli, F.; Villosio, P.; Durazzo, M.; Cavallo-Perin, P.; Cassader, M. Anti-inflammatory and antioxidant effects of resveratrol in healthy smokers a randomized, double-blind, placebo-controlled, cross-over trial. *Curr. Med. Chem.* **2013**, *20*, 1323–1331. [[CrossRef](#)] [[PubMed](#)]
50. Hung, V.W.S.; Cheng, X.R.; Li, N.; Veloso, K.; Kerman, A.J. Electrochemical Detection of Amyloid-Beta Aggregation in the Presence of Resveratrol. *J. Electrochem. Soc.* **2013**, *160*, G3097–G3101. [[CrossRef](#)]
51. Phan, H.T.T.; Samarath, K.; Takamura, Y.; Azo-Oussou, A.F.; Nakazono, Y.; Vestergaard, M.C. Polyphenols Modulate Alzheimer's Amyloid Beta Aggregation in a Structure-Dependent Manner. *Nutrients* **2019**, *11*, 756. [[CrossRef](#)]
52. Al-Edresi, S.; Alsalahat, I.; Freeman, S.; Aojula, H.; Penny, J. Resveratrol-mediated cleavage of amyloid beta(1–42) peptide: Potential relevance to Alzheimer's disease. *Neurobiol. Aging* **2020**, *94*, 24–33. [[CrossRef](#)]
53. Gu, H.; Li, L.; Cui, C.; Zhao, Z.; Song, G. Overexpression of let-7a increases neurotoxicity in a PC12 cell model of Alzheimer's disease via regulating autophagy. *Exp. Ther. Med.* **2017**, *14*, 3688–3698. [[CrossRef](#)]
54. Andrade, S.; Ramalho, M.J.; Pereira, M.D.C.; Loureiro, J.A. Resveratrol Brain Delivery for Neurological Disorders Prevention and Treatment. *Front. Pharmacol.* **2018**, *9*, 1261. [[CrossRef](#)] [[PubMed](#)]
55. Zhu, C.W.; Grossman, H.; Neugroschl, J.; Parker, S.; Burden, A.; Luo, X.; Sano, M. A randomized, double-blind, placebo-controlled trial of resveratrol with glucose and malate (RGM) to slow the progression of Alzheimer's disease: A pilot study. *Alzheimer's Dement.* **2018**, *4*, 609–616. [[CrossRef](#)] [[PubMed](#)]
56. Guo, J.J.; Sun, W.Q.; Liu, F.F. Brazilin inhibits the Zn²⁺-mediated aggregation of amyloid beta-protein and alleviates cytotoxicity. *J. Inorg. Biochem.* **2017**, *177*, 183–189. [[CrossRef](#)] [[PubMed](#)]
57. Du, W.J.; Guo, J.J.; Gao, M.T.; Hu, S.Q.; Dong, X.Y.; Han, Y.F.; Liu, F.F.; Jiang, Y.; Sun, S.Y. Brazilin inhibits amyloid beta-protein fibrillogenesis, remodels amyloid fibrils and reduces amyloid cytotoxicity functional. *Sci. Rep.* **2015**, *5*, 1–10.
58. Hatcher, H.; Planalp, R.; Cho, J.; Torti, F.M.; Torti, S.V. Curcumin: From ancient medicine to current clinical trials. *Cell Mol. Life Sci.* **2008**, *65*, 1631–1652. [[CrossRef](#)]
59. Reinke, A.A.; Gestwicki, J.E. Structure-activity relationships of amyloid beta-aggregation inhibitors based on curcumin: Influence of linker length and flexibility. *Chem. Biol. Drug Des.* **2007**, *70*, 206–215. [[CrossRef](#)]
60. Kumaraswamy, P.; Sethuraman, S.; Krishnan, U.M. Mechanistic insights of curcumin interactions with the core-recognition motif of beta-amyloid peptide. *J. Agric. Food Chem.* **2013**, *61*, 3278–3285. [[CrossRef](#)]
61. Thapa, A.; Jett, S.D.; Chi, E.Y. Curcumin Attenuates Amyloid-beta Aggregate Toxicity and Modulates Amyloid-beta Aggregation Pathway. *ACS Chem. Neurosci.* **2016**, *7*, 56–68. [[CrossRef](#)]
62. Yang, F.; Lim, G.P.; Begum, A.N.; Ubeda, O.J.; Simmons, M.R.; Ambegaokar, S.S.; Chen, P.P.; Kaye, R.; Glabe, C.G.; Frautschy, S.A.; et al. Curcumin inhibits formation of amyloid beta oligomers and fibrils, binds plaques, and reduces amyloid in vivo. *J. Biol. Chem.* **2005**, *280*, 5892–5901. [[CrossRef](#)]
63. Lim, G.P.; Chu, T.; Yang, F.; Beech, W.; Frautschy, S.A.; Cole, G.M. The curry spice curcumin reduces oxidative damage and amyloid pathology in an Alzheimer transgenic mouse. *J. Neurosci.* **2001**, *21*, 8370–8377. [[CrossRef](#)]
64. Estrada, L.; Soto, D.C. Disrupting beta-amyloid aggregation for Alzheimer disease treatment. *Curr. Top. Med. Chem.* **2007**, *7*, 115–126. [[CrossRef](#)] [[PubMed](#)]
65. Ono, K.; Hasegawa, K.; Naiki, H.; Yamada, M. Anti-amyloidogenic activity of tannic acid and its activity to destabilize Alzheimer's beta-amyloid fibrils in vitro. *Biochim. Biophys. Acta* **2004**, *1690*, 193–202. [[CrossRef](#)] [[PubMed](#)]
66. Ladiwala, A.R.; Dordick, J.S.; Tessier, P.M. Aromatic small molecules remodel toxic soluble oligomers of amyloid beta through three independent pathways. *J. Biol. Chem.* **2011**, *286*, 3209–3218. [[CrossRef](#)]

67. Turkan, F.; Taslimi, P.; Saltan, F.Z. Tannic acid as a natural antioxidant compound: Discovery of a potent metabolic enzyme inhibitor for a new therapeutic approach in diabetes and Alzheimer's disease. *J. Biochem. Mol. Toxicol.* **2019**, *33*, e22340. [[CrossRef](#)]
68. Sharma, N.; Phan, H.T.; Chikae, M.; Takamura, Y.; Azo-Oussou, A.F.; Vestergaard, M.C. Black tea polyphenol theaflavin as promising antioxidant and potential copper chelator. *J. Sci. Food Agric.* **2020**, *100*, 3126–3135. [[CrossRef](#)] [[PubMed](#)]
69. Anandhan, A.; Tamilselvam, K.; Radhiga, T.; Rao, S.; Essa, T.; Manivasagam, M.M. Theaflavin, a black tea polyphenol, protects nigral dopaminergic neurons against chronic MPTP/probenecid induced Parkinson's disease. *Brain Res.* **2012**, *1433*, 104–113. [[CrossRef](#)] [[PubMed](#)]
70. Grelle, G.; Otto, A.; Lorenz, M.; Frank, R.F.; Wanker, J.; Bieschke, E.E. Black tea theaflavins inhibit formation of toxic amyloid-beta and alpha-synuclein fibrils. *Biochemistry* **2011**, *50*, 10624–10636. [[CrossRef](#)]
71. Yuan, H.; Ma, Q.; Ye, L.; Piao, G. The Traditional Medicine and Modern Medicine from Natural Products. *Molecules* **2016**, *21*, 559. [[CrossRef](#)] [[PubMed](#)]
72. Guo, Z. The modification of natural products for medical use. *Acta Pharm. Sin. B* **2017**, *7*, 119–136. [[CrossRef](#)] [[PubMed](#)]
73. Wright, G.D. Unlocking the potential of natural products in drug discovery. *Microb. Biotechnol.* **2019**, *12*, 55–57. [[CrossRef](#)] [[PubMed](#)]
74. Barbier, P.; Zejneli, O.; Martinho, M.; Lasorsa, A.; Belle, V.; Smet-Nocca, C.; Tsvetkov, P.O.; Devred, F.; Landrieu, I. Role of Tau as a Microtubule-Associated Protein: Structural and Functional Aspects. *Front. Aging Neurosci.* **2019**, *11*, 204. [[CrossRef](#)] [[PubMed](#)]
75. Arendt, T.; Stieler, M.; Holzer, J.T. Tau and tauopathies. *Brain Res. Bull.* **2016**, *126*, 238–292. [[CrossRef](#)]
76. Yang, S.H. Cellular and Molecular Mediators of Neuroinflammation in Alzheimer Disease. *Int. Neurol. J.* **2019**, *23*, S54–S62. [[CrossRef](#)]
77. Zheng, C.; Zhou, X.W.; Wang, J.Z. The dual roles of cytokines in Alzheimer's disease: Update on interleukins, TNF-alpha, TGF-beta and IFN-gamma. *Transl. Neurodegener.* **2016**, *5*, 7. [[CrossRef](#)]