





# A rapid review of stocking and marketing practices used to sell sugar-sweetened beverages in U.S. food stores

Bailey Houghtaling<sup>1</sup>  | Denise Holston<sup>1</sup>  | Courtney Szocs<sup>2</sup> | Jerrod Penn<sup>3</sup>  | Danyi Qi<sup>3</sup> | Valisa Hedrick<sup>4</sup> 

<sup>1</sup>School of Nutrition and Food Sciences, Louisiana State University (LSU) and LSU Agricultural Center, Baton Rouge, LA, USA

<sup>2</sup>E.J. Ourso College of Business, Louisiana State University, Baton Rouge, LA, USA

<sup>3</sup>Agricultural Economics and Agribusiness, Louisiana State University (LSU) and LSU Agricultural Center, Baton Rouge, LA, USA

<sup>4</sup>Department of Human Nutrition, Foods, and Exercise, Virginia Tech, Blacksburg, VA, USA

## Correspondence

Bailey Houghtaling, School of Nutrition and Food Sciences, Louisiana State University (LSU) and LSU Agricultural Center, 271 Knapp Hall, Baton Rouge, LA 70803, USA.  
Email: bhoughtaling@agcenter.lsu.edu

## Funding information

USDA National Institute of Food and Agriculture, Grant/Award Number: Hatch project 1024670; Healthy Eating Research

## Summary

Sugar-sweetened beverages (SSBs) are a primary source of added sugars in the American diet. Habitual SSB consumption is associated with obesity and non-communicable disease and is one factor contributing to U.S. health disparities. Public health responses to address marketing-mix and choice-architecture (MMCA) strategies used to sell SSB products may be required. Thus, our goal was to identify original research about stocking and marketing practices used to sell SSB in U.S. food stores. We used Preferred Reporting Items for Systematic Reviews and Meta-Analyses (PRISMA) and the World Health Organization (WHO) protocol for rapid reviewing. We searched six databases and Google Scholar using key terms focused on store type and SSB products. We characterized results using an MMCA framework with categories place, profile, portion, pricing, promotion, priming or prompting, and proximity. Our search resulted in the identification of 29 articles. Most results focused on profile (e.g., SSB availability) ( $n = 13$ ), pricing (e.g., SSB prices or discounts) ( $n = 13$ ), or promotion (e.g., SSB advertisements) ( $n = 13$ ) strategies. We found some evidence of targeted MMCA practices toward at-risk consumers and differences by store format, such as increased SSB prominence among supermarkets. The potential for systematic variations in MMCA strategies used to sell SSB requires more research. We discuss implications for public health, health equity, and environmental sustainability.

## KEYWORDS

choice architecture, food environment, SSB, SSB marketing, SSB stocking, sugar-sweetened beverage, sugary drinks

## 1 | INTRODUCTION

Sugar-sweetened beverages (SSB) or drinks with energy-dense sweeteners (e.g., brown sugar, corn sweeteners and syrups, dextrose, fructose, glucose, honey, lactose, malt syrup, maltose, molasses, raw sugar, and sucrose)<sup>1,2</sup> are a main source of added sugars and discretionary kilocalories (kcal) in the American diet.<sup>2,3</sup> A 20 fluid-ounce soda has

around 264 kcal from 66 g or 16.5 teaspoons of added sugars,<sup>4</sup> exceeding American Heart Association (AHA) and 2015–2020 Dietary Guidelines for Americans (DGA) daily intake recommendations in one container.<sup>1,5</sup> Specifically, the DGA advises less than 10% of total daily kcal come from added sugars (<200 kcal for an average 2000-kcal diet),<sup>1</sup> and the AHA recommends daily added sugars intake not exceed six teaspoons for women and children and nine teaspoons for men.<sup>5</sup>

This is an open access article under the terms of the Creative Commons Attribution-NonCommercial-NoDerivs License, which permits use and distribution in any medium, provided the original work is properly cited, the use is non-commercial and no modifications or adaptations are made.

© 2020 The Authors. Obesity Reviews published by John Wiley & Sons Ltd on behalf of World Obesity Federation

Total added sugars from foods and beverages accounted for an estimated 14% of adults' and 17% of children's total daily kcals in 2012, with the majority coming from SSB products.<sup>3</sup> Around 54% of U.S. men and 45% of U.S. women have reported consuming at least one SSB per day,<sup>6</sup> with the highest frequency of consumption among at-risk groups.<sup>6–12</sup> Habitual SSB consumption is associated with a high prevalence of obesity and noncommunicable disease (NCD), namely, type 2 diabetes, cardiovascular diseases, and some cancers.<sup>5,13–15</sup> Given intake differences,<sup>6–12</sup> SSB products are one variable driving inequitable health outcomes among U.S. rural, low-income, and racial/ethnic minority populations.<sup>7–9,16</sup> Public health responses are required to improve consumer dietary quality and mitigate health disparities.

One mechanism to improve Americans' dietary quality is SSB taxation, which has been the focus of numerous reviews. Evidence has shown taxes to favorably change consumers' dietary behaviors,<sup>17–19</sup> even among at-risk populations,<sup>19</sup> albeit issues with store management and consumer acceptability in some cities.<sup>20,21</sup> SSB taxation has also been shown to change consumer food environments by raising SSB purchase prices.<sup>22</sup> However, price is only one factor influential on consumer decision making.<sup>23,24</sup> Taxation could prompt SSB manufacturers and retailers to use comprehensive marketing-mix and choice architecture strategies to improve sales.<sup>22</sup> U.S. beverage manufacturers and food retailers cater to consumer demand to maximize business profit,<sup>25</sup> although evidence suggests the prominence of energy-dense and nutrient-poor products within retail spaces drives the selection of affordable, palatable, and unhealthy choices beyond consumers' immediate awareness,<sup>24,26–28</sup> especially among at-risk populations with fewer resources<sup>29,30</sup> who may be disproportionately targeted.<sup>16,31,32</sup>

In the United States, consumers purchase the majority of SSB products from convenience, mass merchandizer, dollar, and drug stores, in addition to using traditional supermarkets or grocers.<sup>33</sup> These retailers are often authorized to accept federal nutrition assistance benefits, including the U.S. Department of Agriculture's Supplemental Nutrition Assistance Program (SNAP) and Special Supplemental Nutrition Assistance Program for Women, Infants, and Children (WIC), providing a viable entry point for policy change<sup>34</sup> due to retailer stocking requirements for SNAP and/or WIC authorization.<sup>35,36</sup> We use a marketing-mix and choice-architecture (MMCA) framework<sup>23</sup> that combines marketing and behavioral economic principles to describe strategies used for food and beverage sales to explore SSB product stocking and marketing. For example, strategies used to sell SSB products in U.S. food stores might include<sup>23,37</sup> manipulations to the retail atmosphere or infrastructure, such as with music or through beverage cooler additions (MMCA category place);<sup>38</sup> SSB product availability or product nutrient characteristics (MMCA category profile); varied SSB product sizes (MMCA category portion); SSB advertisements (MMCA category promotion); SSB displays or labeling strategies to increase product prominence (MMCA category priming or prompting); and calculated SSB product placements in impulse selection areas (MMCA category proximity).<sup>23,24,37</sup> The purpose of our review was to understand MMCA strategies used to sell SSB products in U.S. food stores. This topic area is consistent with global

public health and sustainability targets outlined in the 2030 Agenda for Sustainable Development.<sup>39–42</sup>

## 2 | MATERIALS AND METHODS

We used the Preferred Reporting Items for Systematic Reviews and Meta-Analyses (PRISMA)<sup>43</sup> and a policy-oriented rapid reviewing protocol published by the World Health Organization.<sup>44</sup> We used these guidelines to inform opportunities for food retail changes to improve public health and highlight research areas needed to inform policy change. Before searches began, we registered a review protocol with International Prospective Register of Systematic Reviews (PROSPERO) although we completed the review before registration processed. Coauthors are from multiple disciplines and are topic experts on issues relevant to nutrition, marketing, and economics.

### 2.1 | Literature search

On the basis of results from preliminary search tests, we chose six academic databases (Table 1) and Google Scholar for systematic searching. We constructed key terms to search for relevant research in November 2019. Stakeholder feedback received during a preliminary results forum organized by the Center for Science in the Public Interest, The Food Trust, Johns Hopkins Bloomberg School of Public Health, and Healthy Eating Research informed an updated key term strategy that was used for searching in January and in April 2020.

**TABLE 1** Key search terms used in academic databases<sup>a</sup> and Google Scholar<sup>b</sup> to identify literature relevant to stocking and marketing practices in U.S. food stores

Key terms: Context	Key terms: Product
Supermarket OR grocery OR grocer OR bodega OR “full-service store” OR “limited-service store” OR “food store” OR store OR “food environment” OR “consumer food environment” OR “nutrition environment” OR “food retail” OR retail OR convenience OR dollar OR “drug store” OR pharmacy OR “super center” OR club OR “mass merchandiser”	“sugar-sweetened beverage” OR SSB OR “sugary drink” OR soda OR pop OR juice OR “energy drink” OR “soft drink” OR “sport drink” OR “flavored milk” OR “chocolate milk” OR “strawberry milk” OR “sweet tea” OR “sweetened water” OR “sweetened beverage” OR “added sugar” OR “soda tax” <sup>c</sup> OR “beverage tax” <sup>c</sup>

<sup>a</sup>Academic Search Complete, Environment Complete, PubMed, PsycINFO, MEDLINE, and Business Source Complete.

<sup>b</sup>Phrases using stated key terms were used to search the first 100 (November 2019) and 20 (April 2020) sources (due to lack of relevance observed on later search pages).

<sup>c</sup>Stocking and marketing differences related to SSB taxation were of interest, although a review on this topic specific to product pricing was identified.<sup>22</sup> Therefore, data about SSB taxation and outcomes related to other marketing-mix and choice-architecture strategies aside from price (e.g., promotions) were of interest to review scope.

Key terms focused on context (store setting) and product (SSB type) (Table 1). When possible, the lead author (BH) searched databases concurrently to preresearch duplications and restricted searches to include only U.S. peer-reviewed articles published between January 2013 and April 2020 to reduce the number of sources requiring title/abstract review. The lead author (BH) extracted search results to EndNote X9 and reviewed source titles and abstracts to assess full-text relevance. This procedure represents the main variation of the current study from traditional systematic review methods.<sup>44</sup> All authors reviewed reference lists of included articles to locate potential sources not identified in searches.

The year 2013 was chosen as a search parameter due to public policy and beverage industry campaigns that may have influenced SSB stocking and marketing practices in food stores.<sup>45</sup> In 2013, the Partnership for Healthier America launched the “Drink Up” campaign in coordination with industry partners to encourage U.S. consumers to purchase and consume more water (rather than SSB products).<sup>46,47</sup> In 2015, the American Beverage Association alongside The Coca-Cola Company, Keurig Dr. Pepper, and PepsiCo launched the Balance Calories Initiative (BCI),<sup>48,49</sup> committing to responsible SSB product labeling and marketing practices.

## 2.2 | Inclusion and exclusion criteria

We included original, peer-reviewed research articles published during or after the year 2013 about SSB stocking and marketing practices used in U.S. food stores. We referred to a 2017 USDA report to define “food store” (i.e., supermarkets, drug stores, mass merchandizers, supercenters, convenience stores, dollar stores, and club stores).<sup>50</sup> We limit the focus to the United States to allow for a discussion of U.S. policy implications, given a unique policy climate relative to other high-income countries. We did not include restrictions by the type of research design or sample, although results were required to be specific only to SSB products. For example, results combining “unhealthy” products (e.g., SSB, candy, and confections) were not eligible if findings specific to SSB were not distinguishable. We did not include theses or dissertations and commentary or perspective pieces. We also excluded research describing the influence of environmental interventions<sup>39</sup> and taxation<sup>17–19,22</sup> on consumer SSB consumption or store pricing strategies, as these topics have been reviewed previously. However, we were interested in results about the use of other MMCA strategies (aside from price changes) resultant from SSB taxation, as this has not been a focus of previous reviews.

## 2.3 | Main outcomes

We categorized data about SSB stocking and marketing practices by best fit using a MMCA framework,<sup>23</sup> including seven categories relevant to food store settings (i.e., place, profile, portion, pricing, promotion, priming or prompting, and proximity).<sup>23,37</sup> We provide brief

examples of the framework throughout and direct readers to Kraak et al. (2017) for additional information.<sup>23</sup>

We assessed article quality with the 2018 Mixed-Method Appraisal Tool,<sup>51–53</sup> chosen based on tool capacity to assess quality among several research designs, including qualitative, nonrandomized, quantitative descriptive, and mixed-method research. The tool characterizes study quality among seven indicators, and a higher number of “can’t tell” or “no” versus “yes” responses were used to indicate reduced quality.<sup>51–53</sup> We used a standardized spreadsheet to extract outcome data, and agreement on all data extraction indicators was reached between two authors.

## 3 | RESULTS

### 3.1 | Search yields

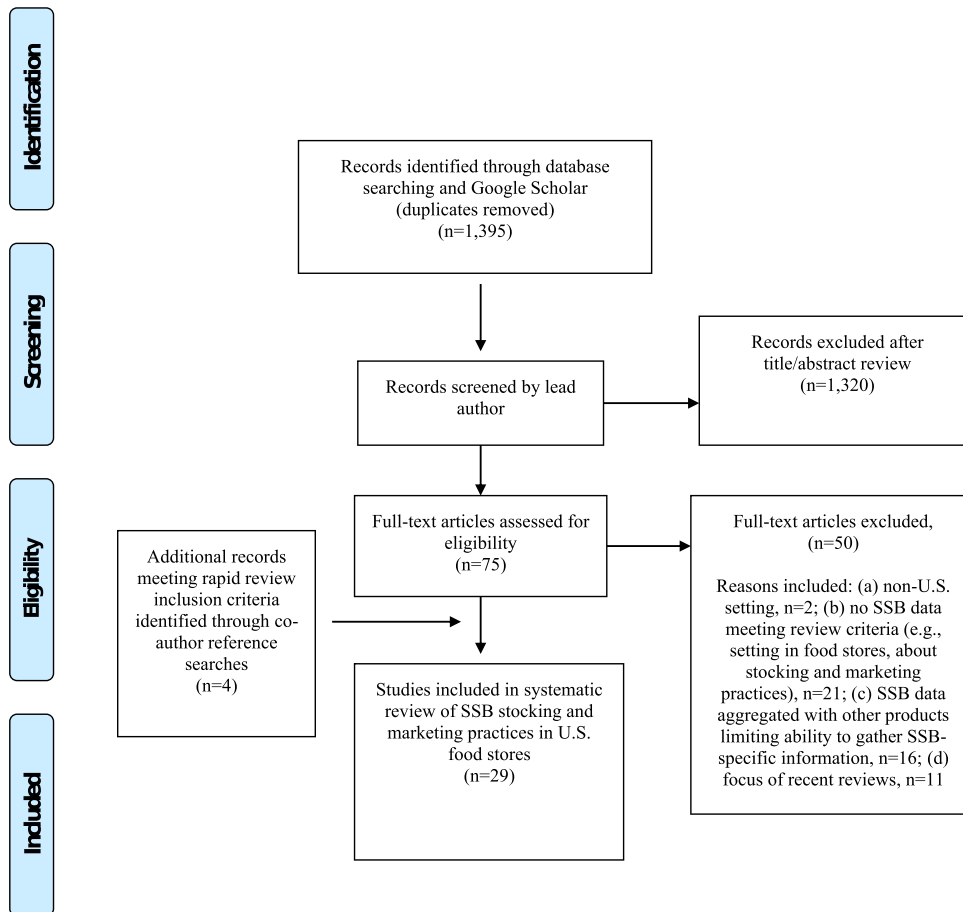
We identified 29 articles meeting review inclusion criteria.<sup>54–81</sup> Refer to Figure 1 for a flow diagram of search results. Most studies were classified as quantitative descriptive research ( $n = 24$  articles; 83%) (Table 1). Data about SSB stocking and marketing practices were collected from at least 22,126 unique food stores (some did not specify store number), with stores located in urban areas represented more frequently than those in rural areas (Table 1). Data collected from store management ( $n = 12$  participants),<sup>57</sup> caregiver–youth dyads ( $n = 847$  dyads),<sup>66</sup> and parents ( $n = 49$  participants)<sup>71</sup> were also included as results provided perceptions about stocking and marketing practices used in food stores. Study quality of included articles was generally high. Unfavorable (“can’t tell” or “no”) responses using the Mixed-Method Appraisal Tool ranged from 0 to 4 out of a possible 7 (mean 1.66). Table 2 includes study information extracted among all articles.

We observed variations in SSB stocking and marketing practices by store type ( $n = 12$  articles; 41%) and by consumer sociodemographic characteristics, including income ( $n = 6$  articles; 21%), race/ethnicity ( $n = 3$  articles; 10%), location ( $n = 4$  articles; 14%), and consumer SSB consumption patterns ( $n = 2$  articles; 7%) (Table 3). Table 3 provides detailed results specific to MMCA categories place, profile, portion, pricing, promotion, priming or prompting, and proximity strategies used to sell SSB products.

### 3.2 | Evidence synthesis

#### 3.2.1 | Place

Place strategies could include changes to store atmosphere qualities (e.g., lighting) or structural additions (e.g., installing shelves or coolers) to support product stocking and encourage SSB purchases.<sup>23,37</sup> One study (3%) assessed store management perceptions of infrastructure installation to support SSB product stocking (Table 3), which was reportedly directed by manufacturers with discretion left to management regarding changes.<sup>57</sup>



From: Moher D, Liberati A, Tetzlaff J, Altman DG, The PRISMA Group (2009). Preferred Reporting Items for Systematic Reviews and Meta-Analyses: The PRISMA Statement. *PLoS Med* 6(7): e1000097. doi:10.1371/journal.pmed1000097. For more information, visit [www.prisma-statement.org](http://www.prisma-statement.org).

**FIGURE 1** Flow diagram of articles identified for review inclusion using Preferred Reporting Items for Systematic Reviews and Meta-Analyses (PRISMA) search guidelines

### 3.2.2 | Profile

Thirteen studies (45%) provided information about SSB product availability or ingredient composition.<sup>23,37</sup> SSB products were generally highly available,<sup>54,58,61,62,64,73–75,77,79</sup> and researchers in one study observed no changes in SSB availability between years 2016 and 2017 (no intervention).<sup>79</sup> At times, SSB products were found less prevalent than other “junk” products in two smaller store investigations (Table 3).<sup>61,77</sup> Parents also believed SSB products were widely available in food stores.<sup>71</sup> Store managers described SSB product reformulation as required to reduce consumers' added sugar consumption and also indicated manufacturers contracted shelf space for SSB.<sup>57</sup>

Limited-service stores were the only sites observed to carry sugar-sweetened water products in comparison with grocers in one study.<sup>77</sup> SSB stocking varied among chain store brands of the same format<sup>73,74</sup> and by store location. For example, stores near the Mexican border carried imported SSB brands not found in other regions.<sup>58</sup> Community stores with higher income consumers stocked energy shots more frequently than stores serving consumers with low income.<sup>74</sup> Additionally, one study found increased SSB product

availability during monthly SNAP benefit issuance periods,<sup>70</sup> and another found a large proportion of SSB products to be child-focused among sampled supermarkets.<sup>80</sup>

### 3.2.3 | Portion

Two studies (7%) reported results related to SSB container or portion size (Table 3).<sup>23,37</sup> In one study that measured the availability of SSB mini cans, smaller containers were available in only a few sampled grocers and not at all in convenience stores.<sup>58</sup> Qualitative evidence from a separate study among store management identified smaller SSB portions as a perceived opportunity to improve consumer dietary quality while maintaining sales (Table 3).<sup>57</sup>

### 3.2.4 | Pricing

Pricing strategies to sell SSB products include price promotions or store/regional product pricing strategies.<sup>23,37</sup> Information about SSB

**TABLE 2** Original research included in a rapid review of sugar-sweetened beverage (SSB) stocking and marketing practices in U.S. food stores (n = 29)

First author and publication year	Design	Objective	Location <sup>a</sup>	Participant/store characteristics	Data collection measures	Definition of SSB used in study	Unfavorable quality review responses <sup>b</sup>
Adjoian, 2014	Quantitative descriptive	To investigate SSB availability, marketing, and pricing among locations with higher and lower resident SSB consumption	Urban: New York City, NY. Higher and lower consumption areas: South Bronx; Central Harlem and Upper West Side (Manhattan); East New York and Greenpoint (Brooklyn); and Astoria (Queens)	518 stores in higher consumption areas: corner stores, n = 443; chain pharmacies, n = 12; grocery stores, n = 63 469 stores in lower-consumption areas: corner stores, n = 365; chain pharmacies, n = 21; grocery stores, n = 83	Tool developed by study authors to measure availability, price, and advertisements in store exterior/interior. Pretested (n = 29) for feasibility and interrater reliability	Drinks with added caloric sweeteners, >25 kcals per 8 fluid-ounce (fl. oz.) serving. SSBs included soda, sports drinks, energy drinks, iced tea, fruit drinks, and vitamin-enhanced water (VITAMINWATER and True Colors)	1
Barnes, 2014	Quantitative descriptive	To characterize advertisements for healthy and less healthy foods and beverages	Urban: Minneapolis–St. Paul, MN	119 stores: corner/small grocery stores, n = 46; food/gas marts, n = 51; dollar stores, n = 9; pharmacies, n = 13	Adapted food availability and marketing survey (CX3) to assess advertisements and product placement. Noted to have good interrater and test–retest reliability	Soft drinks and other sweetened beverages	1
Basch, 2016	Quantitative descriptive	To characterize candy and snack food availability in checkout lanes	Urban: Kingston, NY	2 department stores. Other stores were assessed that did not meet review inclusion criteria for food store	Presence of target products and their proximity to the cash register were recorded	Soft drinks/soda	2
Bogart, 2019	Qualitative	To assess awareness and perceptions of the balance calories initiative (BCI) among key stakeholders	Urban and rural: Montgomery, AL (urban); North Mississippi Delta, MS (rural); and Eastern Los Angeles, CA (urban)	6 managers of supermarkets and 6 of convenience stores. Other participants did not meet review inclusion criteria for food store	Semi-structured interviewing using a think-aloud process in response to BCI marketing materials	BCI-represented SSB brands: Coca-Cola Co.; PepsiCo, Inc.; Keurig; and Dr. Pepper	0
Cohen, 2015	Quantitative descriptive	To observe placement and price reduction strategies in food retail outlets	Urban: Pittsburg, PA	43 stores: supermarket, n = 8; neighborhood store, n = 18; supercenter/wholesale, n = 5; chain convenience, n = 4; dollar, n = 1; and specialty, n = 4	Bridging the Gap Food Store Observation Form (BTG-FSOF). Shown reliable	SSB not defined	3

(Continues)

TABLE 2 (Continued)

First author and publication year	Design	Objective	Location <sup>a</sup>	Participant/store characteristics	Data collection measures	Definition of SSB used in study	Unfavorable quality review responses <sup>b</sup>
Cohen, 2018	Quantitative descriptive	To determine quantity and prominence of SSBs in stores exposed to the BCI	Urban and rural: Birmingham and Montgomery, AL (urban); Boyle Heights, Los Angeles, CA (urban); North and South Delta, MS (rural)	52 supermarkets/grocers and 17 convenience stores among five study sites	Store scoresheet to measure SSB availability, marketing, and price. Interrater reliability (Kappa 0.96) tested among sample subset	Beverages with added sugar and >40 kcal/serving. Included flavored milk	1
Ethan, 2013	Quantitative descriptive	To assess the nutritional quality of foods advertised in grocery store circulars	Urban: New York City, NY (Bronx)	15 chain grocers	Coding scheme used to assess product, food group, price, processed/unprocessed, serving size, grams sugar/serving for SSB	SSBs including sodas, sports and energy drinks, fruit drinks, and other beverages like tea and coffee drinks, and sweetened milk or milk alternatives to which high-fructose corn syrup or sucrose was added	2
Evans, 2018	Quantitative descriptive	To assess cost of groceries by energy density and to determine costs differences by metric used	Urban and rural: Rochester, NY (urban) and surrounding area in Monroe County	60 grocery stores	Standardized assessment of product price, brand, size, cost, and nutrition facts label information	SSBs chosen from What We Eat in America survey. Included fruit juice drinks (regular and reduced sugar), 25% juice, Gatorade® or generic sports drinks, soft drinks, and sweet tea	1
Futrell Dunaway, 2017	Nonrandomized	To conduct a financial analysis and evaluate an infrastructure project regarding the stocking of fruits and vegetables and consumer awareness	Urban: New Orleans, LA	1 corner grocery store	Store-intervention partnerships allowed sharing of inventory and sales data	All SSB, such as carbonated, uncarbonated, sports and energy drinks, teas, and coffees	2
Grigsby-Toussaint, 2013	Quantitative descriptive	To document the marketing of dietary products among stores frequented by mothers of young children	Urban: Urbana and Champaign, IL	24 stores: grocery, <i>n</i> = 12; and convenience, <i>n</i> = 12	Reliable and validated food store audit	Soda and juice	2

(Continues)

TABLE 2 (Continued)

First author and publication year	Design	Objective	Location <sup>a</sup>	Participant/store characteristics	Data collection measures	Definition of SSB used in study	Unfavorable quality review responses <sup>b</sup>
Harris, 2020	Quantitative descriptive	To characterize child-focused marketing for fruit drinks	Urban: eight U.S. diverse cities (not specified)	Supermarkets (n unknown)	Weekly sales data sourced from IRWorldwide	Juice drinks (e.g., fruit-flavored or juice drinks that contain added sugar) sold in ≤20 fl. oz. containers (e.g., child focus)	2
Igor, 2016	Quantitative descriptive	To assess outdoor exterior food and beverage advertisement prevalence respective to community characteristics	Urban and rural: nationwide sample	8021 stores: supermarkets/grocers, n = 1684; and limited service with no fresh meat, n = 6337	BTG-FSOF to document availability, price, and promotion of foods and beverages. Shown reliable	Regular (nondiet) soda	2
Jilcott Pitts, 2016	Quantitative descriptive	To examine promotional properties in support of healthy dietary behaviors	Urban and rural: Greenville (urban) and Kingston (rural), NC	9 stores (not characterized by format)	BTG-FSOF to document availability, price, and promotion of foods and beverages. Shown reliable	Juice drinks, regular soda, energy drinks, and isotonic sports drinks	1
Kern, 2016	Quantitative descriptive	To examine variation in milk and soda prices and the price of milk relative to soda by community characteristics	Urban and rural: 41 states and Washington, DC	1743 large U.S. chain supermarkets.	Price data from a market research group Information Resources, Inc	Brand-name sugar-sweetened sodas (e.g., Coke, Pepsi, Sprite)	3
Kumar, 2014	Quantitative descriptive	To examine exposure to food and beverage marketing	Urban and rural: nationwide probability sample	847 caregiver and youth (aged 12–17) dyads	Youth Styles Survey and the Consumer Styles Survey to measure frequency of advertisement exposure and exposure settings (i.e., school, supermarkets/grocers, convenience store/gas station, television, internet or cell phone)	Soda (Coke, Sprite, and Mountain Dew), fruit drinks (Capri Sun, Sunny Delight, and Hawaiian Punch), sports drinks (Gatorade or Powerade), and energy drinks (Red Bull, 5-hour Energy, and NOS)	2
Leider, 2019	Quantitative descriptive	To associate SSB prices with beverage, size, sale status, store type, and community characteristics	Urban: Cook County, IL; St. Louis, MO; and Oakland and Sacramento CA	581 stores: supermarkets, n = 116; grocers, n = 66; chain convenience, n = 133, nonchain convenience, n = 199; small discount, n = 33;	Beverage Tax Food Store Observation form adapted from two tools (BTG-FSOF) and Illinois Prevention Research Center (IPRC) Nutrition and Obesity Policy	Soda, sports drinks, energy drinks, non-100% juice drinks, and ready-to-drink tea/coffee	1

(Continues)

TABLE 2 (Continued)

First author and publication year	Design	Objective	Location <sup>a</sup>	Participant/store characteristics	Data collection measures	Definition of SSB used in study	Unfavorable quality review responses <sup>b</sup>
López, 2014	Quantitative descriptive	To assess online coupon incentives among retailers	Urban and rural: United States locations (unspecified)	and drug/pharmacy, <i>n</i> = 78 6 chain grocery stores	Research Evaluation Network (NOPREN) Food Store Observation Form). Found reliable Online coupons intended for in-store use were reviewed weekly. An adapted MyPlate was used to characterize coupons	Sodas, juices, and energy/sports drinks	2
Lucan, 2020	Quantitative descriptive	To investigate changes over time in the food environment regarding food and drink product availability	Urban: New York City, NY	17 food stores in 2016 and follow up in 2017 ( <i>n</i> = 16 stores)	Observation form with in-depth training and reliability checks used	Less-healthy drinks, categorized as sugary drinks	3
Martin-Biggers, 2013	Quantitative descriptive	To use describe the types of products advertised in newspaper grocery sales circulars	Urban and rural: 50 states and Washington, DC	51 top supermarket retailers based on data from 2011	An instrument developed by study authors to assess the first page of circulars for product information and size of advertisements. Coding manuals, training, and multi-coder agreement were used	SSB was categorized under "sweets" as a subgroup in a post hoc test	0
Moran, 2018	Quantitative descriptive	To examine differences in beverage marketing during periods of Supplemental Nutrition Assistance Program (SNAP) benefit issuance overall and by community characteristics	Urban: Albany, Buffalo, and Syracuse, NY	630 chain and 264 nonchain SNAP stores: convenience, <i>n</i> = 166; pharmacy, <i>n</i> = 77; large grocers, <i>n</i> = 47; small grocers, <i>n</i> = 231; and other (e.g., mass merchandizers), <i>n</i> = 109	Scan of Nutrition Environment Measures Survey in Stores (NEMS-S) and Retail Assessment of Tobacco Stores data for information about SSB availability, cost, and marketing	Nonalcoholic beverages containing added caloric sweeteners, >25 kcal/8 fl. oz	3
Penilla, 2017	Qualitative	To understand parents' perceptions about environmental barriers to obesity prevention and child diet and physical activity behaviors	Urban: San Francisco, CA	49 Latino (Mexican, Guatemalan or Salvadoran) parents: mothers, <i>n</i> = 27; fathers, <i>n</i> = 22	Focus group questions related to soda consumption	Soda	0

(Continues)



TABLE 2 (Continued)

First author and publication year	Design	Objective	Location <sup>a</sup>	Participant/store characteristics	Data collection measures	Definition of SSB used in study	Unfavorable quality review responses <sup>b</sup>
Powell, 2016	Quantitative descriptive	To characterize price promotions by product healthfulness, store type, and community characteristics	Urban and rural: U.S. communities ( <i>n</i> = 468) representative of public middle and high school student	8959 stores: supermarkets with fresh meat and multiple registers/service counters, <i>n</i> = 955; grocers with fresh meat, <i>n</i> = 870; and limited service (e.g., convenience, drug, dollar), <i>n</i> = 7134	BTG-FSOF to assess price promotions. Found reliable	SSB types included family and individual sizes of <50% juice drinks, ≤10% juice box/pouches, regular soda (i.e., Coca-Cola or Pepsi), energy drinks, isotonic sports drinks, and enhanced water	1
Racine, 2016	Quantitative descriptive	To document the types of dietary products available at SNAP-authorized dollar stores and assess differences by chain and community characteristics	Urban and rural: 16 counties in southern and western areas of NC	90 chain dollar stores: Dollar General, <i>n</i> = 30; Dollar Tree, <i>n</i> = 30; and Family Dollar, <i>n</i> = 30	Adapted food environment observation tool used in other food store research to capture specified foods and beverages. Interrater reliability (88%) assessed among 5 stores for 100 variables	Multiserving size units of soda	1
Racine, 2017	Quantitative descriptive	To characterize dietary products available in SNAP-authorized drug stores by chain and community characteristics	Urban and rural: 25 counties in NC including Asheville, Charlotte, and Durham	108 drug store chains: Rite Aid, <i>n</i> = 36; CVS, <i>n</i> = 36; and Walgreens, <i>n</i> = 36	Adapted food environment observation tool used in other food store research to capture specified foods and beverages. Pilot tested for interrater reliability (84%)	Sports drinks, energy drinks, energy shots, regular soda, SSB (not soda)	1
Robles, 2019	Mixed-method	To provide information and details about lessons learned coordinating a SNAP-Ed Small Corner Store Project regarding planning and programming	Los Angeles County, CA (urban)	12 stores: convenience, <i>n</i> = 10; variety, <i>n</i> = 1; butcher (e.g., carniceria), <i>n</i> = 1. Convenience stores often also coded as variety stores, butcher, and/or liquor stores	Internally developed tool that assessed shelf space, internal and external ads, and produce varieties	SSB	4

(Continues)

TABLE 2 (Continued)

First author and publication year	Design	Objective	Location <sup>a</sup>	Participant/store characteristics	Data collection measures	Definition of SSB used in study	Unfavorable quality review responses <sup>b</sup>
Ruff, 2016	Quantitative descriptive	To characterize adult shopping behaviors and store properties influential on consumer behavior	Urban: New York City, NY	171 bodegas	Store assessment form to measure availability and location for produce, water, SSB, diet beverages, and alcohol. Pilot tested for usability	Carbonated or uncarbonated, manufacturer-sweetened (nonalcoholic) beverages with sugar or other caloric sweeteners, >25 kcal/8 fl. oz. Milk not included	1
Singleton, 2017	Quantitative descriptive	To capture the availability of foods and beverages in communities eligible for the Healthy Food Financing Initiative	Urban: Chicago and Rockford, IL	127 stores: small grocery, <i>n</i> = 34; and limited-service sites with no fresh meat, <i>n</i> = 93	IPRC-NOPREN Food Store Observation Form. Found reliable	Juice (<50%) or juice drinks, regular soda, and enhanced water with sugar, sweeteners, artificial flavoring, vitamins, and/or minerals	3
Thornton, 2013	Quantitative descriptive	To investigate produce, snack food, and soft drink availability in checkouts and end-aisle displays internationally	Urban: In the United States, Columbia, SC; Philadelphia, PA; and Bethesda/Washington, DC	32 supermarkets: Acme, <i>n</i> = 1; Bi-Lo, <i>n</i> = 3; Bottom Dollar, <i>n</i> = 1; Fresh Grocer, <i>n</i> = 2; Fresh Market, <i>n</i> = 1; Food Lion, <i>n</i> = 5; Giant, <i>n</i> = 4; Harris Teeter, <i>n</i> = 2; Kroger, <i>n</i> = 1; Piggly Wiggly, <i>n</i> = 3; Safeway, <i>n</i> = 4; Sams, <i>n</i> = 1; Save a Lot, <i>n</i> = 1; Shop n Bag, <i>n</i> = 1; Superfresh, <i>n</i> = 1; and Trader Joes, <i>n</i> = 1	Standardized audit tool to measure product shelf space and availability. Implementer training used	Diet and regular soda	2
Zenk, 2020	Nonrandomized	To understand changes to store marketing practices resulting from a 1 cent/fl. oz. SSB tax in Oakland, CA	Urban: Oakland and Sacramento, CA	249 stores: supermarkets, <i>n</i> = 76; limited service, <i>n</i> = 173	Beverage Tax Food Store Observation Form to assess exterior and interior advertisements and price promotions. Found reliable.	Regular soda, regular sports drinks, regular energy drinks, juice drinks, ready-to-drink coffees/teas with least 25 kcals/12 fl. oz	1

<sup>a</sup>When study site designation as urban or rural was unclear a database was used (<https://www.ruralhealthinfo.org/am-i-rural>).

<sup>b</sup>Quality assessed using the 2018 Mixed Method Appraisal Tool. Number of unfavorable responses indicates number of "no" or "can't tell" responses (rather than "yes") noted among seven quality indicator questions by study design.

**TABLE 3** Results specific to seven marketing-mix and choice-architecture (MMCA) categories regarding stocking and marketing practices used to sell sugar-sweetened beverages (SSBs) in U.S. food stores

MMCA category definition	References	Results
Place Light, sound (esthetic), or cooler/shelving installation (infrastructure) used to stock SSB products <sup>23,38</sup>	Bogart, 2019 <sup>57</sup>	Managers explained beverage manufacturers might install the store coolers. Although some also indicated managers had final approval regarding the store location of manufacturer installments and could move coolers without informing the companies.
Profile Stocked varieties of SSB products and/or the nutrient composition of available SSB products <sup>23,38</sup>	Adjoian, 2014 <sup>54</sup>	A mean of 11.0 SSB varieties were documented among stores compared with a mean of 4.7 low-kcal beverage alternatives.
	Bogart, 2019 <sup>57</sup>	Manufacturers, in some cases, held formal stocking agreements for shelf space with store management. Some believed obesity reduction would only occur with reformulated SSB products with less sugar and a similar taste.
	Cohen, 2018 <sup>58</sup>	SSB products were the most prevalent beverages among study settings. <b>Differences by community characteristics:</b> East Los Angeles, California stores commonly had SSB varieties from Mexican brands.
	Futrell Dunaway, 2017 <sup>61</sup>	On average, 1142 SSB products were available in stores, which was less than snack items and “other” food/nonfood items.
	Grigsby-Toussaint, 2013 <sup>62</sup>	Juice and soda were available in all stores that accepted Women, Infants, and Children (WIC) benefits.
	Jilcott Pitts, 2016 <sup>64</sup>	Most stores were found to have all SSB items available (range 6–7 out of a possible 0–7).
	Lucan, 2020 <sup>79</sup>	No change in SSB availability between years 2016 and 2017, 100% of stores carried SSB (same for water products).
	Moran, 2018 <sup>70</sup>	<b>Differences by community characteristics:</b> Stores in communities with a high proportion of residents enrolled in the Supplemental Nutrition Assistance Program (SNAP) were found to have increased SSB product variety during SNAP benefit issuance periods in comparison to all other days ( $b = 0.63$ , 95% CI = 0.29, 0.97).
	Penilla, 2017 <sup>71</sup>	Parents discussed the abundance of soda and believed SSB availability in community stores particularly influenced children's dietary choices.
	Racine, 2016 <sup>73</sup>	SSB products (1-gallon, not soda) were available in most dollar stores (66.7%). <b>Differences by store format:</b> There were differences in availability by dollar store chain: SSB 1-gallon (not soda) available in 100% of Dollar General stores, 3.3% of Dollar Tree stores, and 96.7% of Family

(Continues)

TABLE 3 (Continued)

MMCA category definition	References	Results
		Dollar stores; Soda, 2 L available in 100% of Dollar General stores, 3.3% of Dollar Tree stores, and 100% of Family Dollar stores. Soda, 2.5 or 3 L available in 96.7% of Dollar General stores; 96.7% of Dollar Tree stores; and 50% of Family Dollar store. (Statistically significant)
	Racine, 2017 <sup>74</sup>	Sports drinks, energy drinks, regular soda, and other SSB products were available in all drug stores (regardless of community income or food desert status). Energy shots were also highly available (77.4%). Differences by store format: Energy shot availability significantly differed by chain: Walgreens (n = 30; 83.3%); Rite Aid (n = 29; 80.6%); CVS Health (n = 20; 55.6%). <b>Differences by community characteristics:</b> Higher availability of energy shots in community stores within high income residents (n = 33; 91.7%) vs. middle income residents (n = 22; 61.1%) (statistically significant).
	Robles, 2019 <sup>75</sup>	SSB shelf space ranged from 6.4% to 31.3% (mean 15.6%) and was proportionally higher than fruits/vegetables and/or junk food in all but three stores.
	Singleton, 2017 <sup>77</sup>	Almost all stores carried fruit punch/juice drinks (96.8%) and regular soda (97.6%) and were found in higher proportion than 100% juice varieties and diet soda, respectively. Enhanced water was documented in less than half of stores (42.7%) and was found in lower proportion than plain water. <b>Differences by store format:</b> More limited-service stores had enhanced water than small grocers (48.4% vs. 27.3%) (statistically significant). Limited-service stores were more likely than grocers to have healthier alternatives for SSB. (Not statistically significant)
Portion Container size of SSB products that are stocked and marketed <sup>23,38</sup>	Bogart, 2019 <sup>57</sup>	Managers perceived reducing beverage container size could help reduce consumption. One convenience store manager shared experiences of strong consumer sales after negotiating a smaller SSB bottle size for store stocking with American Beverage Association manufacturers.
	Cohen, 2018 <sup>58</sup>	<b>Differences by store format:</b> Mini-cans were not available in observed convenience stores. Mini-cans were predominantly brands of Balance Calories Initiative (BCI)-participating companies and were found available in limited frequency among grocery stores.
Pricing	Adjoian, 2014 <sup>54</sup>	18% of measured stores had sales for SSB. The majority (64%) (supermarkets and

(Continues)

**TABLE 3** (Continued)

MMCA category definition	References	Results
Costs (to consumers or retailers) associated with SSB products <sup>23,38</sup>	Bogart, 2019 <sup>57</sup>	<p>chain pharmacies; bodegas excluded) had sales for SSB while less than half had sales for healthier beverages. However, prices for SSB were not commonly posted among stores (e.g., of 883 stores, SSB prices were not posted in 524; additionally, in 40 stores, no pricing data were recorded).</p> <p>Managers explained beverage companies commonly used coupons instead of store-level interventions. They believed in-store discounts on SSB were most effective for sales compared with other promotions. Coupons were described as less effective to sell SSB due to strict rules that might be confusing to consumers (e.g., expiration date). SSB was described to sell better than no/low-kcal beverages, and management was not incentivized to target promotions at these types of beverages due to low demand (was a suggested BCI strategy). Last, management believed lower prices from beverage companies for low/no-kcal beverages might increase consumer purchase due to their high price compared to SSB.</p>
	Cohen, 2015 <sup>82</sup>	<p><b>Differences by store format:</b> Price promotions most common in grocery stores (34%), followed by supercenter/wholesale (30%), and neighborhood stores (20%). Not identified in chain convenience, dollar, or specialty stores. (Descriptive data)</p>
	Cohen, 2018 <sup>58</sup>	<p>Six-pack Coca-Cola 8 fl. oz. glass bottles were the most expensive (range: \$4.58–\$5.49 or 9.5–11.4 cents/oz.). Mini-cans noted as the next most expensive SSB that could be as low as \$1.99 for six cans if on sale. On average, a 6-pack of mini-cans was \$2.95 (6.6 cents/oz.), and an 8-pack was \$3.49 (5.8 cents/oz.). Coupons were available in one supermarket for 2 L and mini-cans. Smaller SSB containers were higher cost than larger brand sizes (per ounce), and sales were mostly for multipack SSB products. (Descriptive data)</p> <p><b>Differences by community characteristics:</b> 2-L SSB bottles were as low as \$1.00 (1.5 cents/oz.) in the southeastern United States (Mississippi and Alabama), with the highest cost \$1.99 (2.9 cents/oz.) (average \$1.51 (2.2 cents/oz.)). In East Lost Angeles, California, a 2-L bottle of Coca-Cola was as low as \$0.99, and 7-Up was \$0.89 (1.3 cents/oz.). Further, a case of 12 12-oz. cans of Coca-Cola ranged from \$2.75 to 5.99, (1.9–4.2 cents/oz.) with an average cost of \$4.21 (2.9 cents/oz.). (Descriptive data)</p>

(Continues)

TABLE 3 (Continued)

MMCA category definition	References	Results
	Ethan, 2013 <sup>59</sup>	Of beverages offered in sale promotions, most (74%) were SSB. Promotions for multiple unit purchases were also common.
	Evans, 2018 <sup>60</sup>	The unit price (per quart) was 24% lower among high energy density (ED) beverages (i.e., SSB) than low ED beverages. Energy cost (price/calories) was 30% lower among high ED beverages in comparison with low ED beverages. Cost per serving (price/serving) was 35% lower among high ED beverages than low ED beverages. High ED foods (inclusive of SSB) were found more expensive when cost was calculated per kilogram, although cheaper when calculated per calorie, per serving, and per quart. (Statistically significant)
	Futrell Dunaway, 2017 <sup>61</sup>	SSB sales between July 2009 and June 2010 totaled US\$ 26,085.00 and represented 9.2% of total store sales (US \$ 282,541.00). Sales for SSB were observed to be higher than proportion of sales attributed to snack foods, fresh and frozen produce, and "other" food and nonfood products. Gross profit for SSB (sales/revenue – SSB product cost) was calculated as a net US\$ 11,909.00 and represented 12.6% of total profits (US\$ 94,441.00). Profit for SSB was higher than all other products except beer and tobacco.
	Harris, 2020 <sup>80</sup>	Products with added sugars had a significantly higher percentage of sales from price reductions than products without added sugars. Child-focused SSB products had double the sales attributed to price promotions than products without added sugar. (Statistically significant)
	Jilcott Pitts, 2016 <sup>64</sup>	SSB price ranged from \$1.40 to 1.90 per unit (data not shown). <b>Differences by community characteristics:</b> Stores with higher-priced SSB had consumers with higher reported SSB consumption. (Statistically significant)
	Kern, 2016 <sup>65</sup>	Price of soda was always cheaper than the price of milk and did not vary by community characteristics. On average, one serving of soda was about 62% lower than a serving of milk, or a milk serving was 2.5 times more expensive than a serving of soda. (Statistically significant) <b>Differences by community characteristics:</b> Communities with a higher proportion of Hispanic/Black residents were associated with 65% lower soda prices and higher milk prices (adjusted model). Lower income areas associated with lower soda prices (magnitude of association small)

(Continues)

TABLE 3 (Continued)

MMCA category definition	References	Results
	Leider, 2019 <sup>67</sup>	<p>with higher price of milk (adjusted model). In the southeastern United States, the price of soda relative to milk was lower, whereas the price of soda relative to milk was higher in northeast and Midwest U.S. regions.</p> <p>On average, soda was documented as the cheapest SSB option. Mean price (cents/ounce) of SSB: SSB (4.8 ± 4.2); soda (3.4 ± 1.9); sports drink (4.8 ± 2.2); energy drink (19.9 ± 6.3); ready-to-drink coffee/tea (7.8 ± 6.3); juice drink (5.2 ± 3.3). Individual sizes were more expensive than larger family size products among SSB types. Artificially sweetened SSB products were usually comparable in price, and unsweetened options were less expensive, aside from 100% juice in comparison with the price of juice drinks. Adjusted model indicated sports drinks were on average less expensive than soda, and price is significantly, negatively associated with larger sizes. Sales lowered prices among SSB, soda, sports drinks, energy drinks (largest depth of sale, -3.74; 95% CI = -4.31, -3.17), and juice drinks.</p> <p><b>Differences by community characteristics:</b> SSB store prices in majority (&gt;50%) non-Hispanic Black communities were significantly less expensive for all SSB, soda, and energy drinks than for the same products in majority non-Hispanic White community stores. Sports and energy drinks were also less expensive among stores in communities with residents classified as "other." A small positive association between income and soda price was found. (Statistically significant)</p> <p>Differences in SSB price were identified by location (reference site Cook County, Illinois). Oakland and Sacramento, California prices for all SSB, soda, and juice drinks were more expensive. Sports drinks were also identified as significantly more expensive in Oakland.</p> <p><b>Differences by store format:</b> In comparison with supermarkets, all SSB, soda, and sports drinks were lower priced among general merchandize, grocery stores, and small discount stores than supermarkets. Also in comparison: Energy drinks were lower priced in general merchandize and grocery stores; juice drinks were lower priced among grocers; and small discount stores had lower prices for ready-to-drink tea/coffee and juice drinks. Chain convenience and drug/pharmacy stores all SSB, soda, and sports and juice drink products had higher prices than supermarkets, while energy drinks were</p>

(Continues)

TABLE 3 (Continued)

MMCA category definition	References	Results
	<p data-bbox="675 428 799 455">Lopez, 2014<sup>68</sup></p> <p data-bbox="675 831 807 858">Powell, 2016<sup>72</sup></p>	<p data-bbox="1090 222 1442 415">higher in chain convenience stores only. Mean price for all SSB and certain categories were highest among chain convenience stores (adjusted model), followed by prices in supermarkets, nonchain convenience, and drug/pharmacy stores.</p> <p data-bbox="1090 432 1442 821">Of all store coupons, 12% were for beverages (<math>n = 1056</math>). Of these, 46% or 4% were for child-focused drinks/juice, 16% or 2% were for soda, five were for sports drinks, and three were for energy drinks. Comparatively, 14% or 1% were for water. Mean number of coupons varied depending on the beverage: juice and child-focused drinks (<math>\pm 7.7</math>, range 0–22); soda (<math>\pm 2.7</math>, range 0–12); sports drinks (<math>\pm 0.8</math>, range 0–4); and energy drinks (<math>\pm 0.5</math>, range 0–3). Comparatively, coupons for water were on average <math>\pm 2.3</math> with a range of 0–8.</p> <p data-bbox="1090 837 1453 1451">Larger in comparison with smaller SSB product sizes had significantly more targeted price promotions. Price promotions were associated with significantly lower sports drinks (25.4–32.3% lower), energy drinks (11.7–18.4% lower), and enhanced water (19.8–25.2% lower) prices among all stores. Supermarkets price promoted sports drinks (26.9%), energy drinks (8.4%), and enhanced water (18.8%) more than bottled water (2.6%), and price promotions were more often for family-sized than individual-sized regular soda (22.6% vs. 2.5%) and larger rather than smaller juice drink containers (22.9% vs. 13.8%). Supermarket price promotions were linked with lower prices for larger family-sized soda (17.2% lower, regular; 16.8% lower, diet) and juice drinks (21.2% lower; only 2.4 lower for 100% orange juice). (Statistically significant)</p> <p data-bbox="1090 1455 1418 1503">Variations by community characteristics were not identified.</p> <p data-bbox="1090 1507 1453 1644"><b>Differences by store format:</b> SSB price promotions in supermarkets (noted above) were generally more frequent than in grocery and limited-service stores. (Statistically significant)</p>
	<p data-bbox="675 1661 791 1688">Zenk, 2020<sup>81</sup></p>	<p data-bbox="1090 1661 1453 1963">Regular soda had higher prevalence of price promotions in comparison with other SSB products. At 6-month post-tax, the odds of SSB price promotions fell 50% in Oakland and 22% in Sacramento. Price promotions for regular soda declined in Oakland post-tax, by 47% at 6 months and 39% at 12 months (versus no change in Sacramento). The odds of SSB promotions fell by a similar magnitude as SSB in Oakland, 55% at 6 months and</p>

(Continues)



**TABLE 3** (Continued)

MMCA category definition	References	Results
Promotion Targeted signage or marketing materials for SSB products <sup>23,38</sup>		53% at 12 months, which differed significantly from Sacramento.
	Adjoian, 2014 <sup>54</sup>	93% of sampled stores advertised SSB, which was more frequent than other types of beverage advertisements.
	Barnes, 2014 <sup>55</sup>	Of 117 (out of 119) stores found to have healthy product placement, 35% promoted energy drinks and 46% promoted soda; 55 stores (46%) were documented to have an exterior advertisement for a less healthy beverage, and 78 had at least one interior advertisement for a less healthy beverage. <b>Differences by store format:</b> 38 of 51 gas-marts were found to have exterior advertisements for unhealthy beverages (SSB) in comparison with grocery ( $n = 16$ ; 35%), dollar ( $n = 0$ ), and pharmacy stores ( $n = 1$ ; 8%). Gas-marts were more likely to have at least one unhealthy beverage advertisement than other stores ( $n = 45$ ; 88%). Interior SSB advertisements within gas-marts commonly were positioned near the cash register ( $n = 31$ ; 61%), below registers ( $n = 13$ ; 25%); and on the floor or hanging from ceiling in comparison to other stores. (Statistically significant differences found for corner/small grocers and food-gas marts in comparison to dollar and pharmacy stores).
	Bogart, 2019 <sup>57</sup>	Managers indicated stores were provided with BCI materials, without communication or engagement regarding their use from beverage companies. In-store marketing for beverages was reportedly determined by corporate/headquarters. Management also perceived manufacturers used mainly national advertisements to increase consumer demand for SSB. These approaches were perceived to drive store sales.
	Ethan, 2013 <sup>59</sup>	Among the first pages of store circulars, 2311 food and beverage products were identified. About 59% ( $n = 183$ ) of featured beverages were SSB.
	Grigsby-Toussaint, 2013 <sup>62</sup>	Soda had high frequency of marketing claims (83.33%; higher prevalence than claims for healthier products). Stores reportedly used by mothers were more likely to use soda marketing (83.3% vs. 62.2%). Soda products were always found to use marketing claims, although were less likely to feature child-focused cartoons when compared with other healthier or less healthy items. Soda marketing claims: nutrition claim (e.g., low-fat) (100%); taste (e.g., crisp, clean,

(Continues)

TABLE 3 (Continued)

MMCA category definition	References	Results
	Isgor, 2016 <sup>63</sup>	<p>and refreshing) (90%); fun (e.g., made for fun) (9.99%); suggested use (4.99%); and convenience (0%). Soda marketing claims by media giveaways: movie (4.99%); television (25%); cartoon (15%); toys (25%). Juice marketing claims (75% of all juices used claims): nutrition (75%); taste (60%); fun (19.99%); use (30%); and convenience (4.99%). Juice marketing claims by media giveaways: movie and television (0%); cartoon (46.66%); toys (6.66%).</p> <p><b>Differences by community characteristics:</b> Marketing claims for soda were more frequent in Women, Infants, and Children (WIC) than non-WIC authorized stores (100% vs. 62.23%). Juice marketing claims were more frequent in WIC stores (100%) than non-WIC authorized stores (30.83%). (Statistically significant)</p> <p><b>Differences by store format:</b> Marketing claims for soda were more prevalent among convenience (91.66%) in comparison with grocery stores (66.66%). (Statistically significant)</p> <p><b>Differences by community characteristics:</b> Grocery store advertisements for regular soda were more prevalent in non-Hispanic Black (30.5%) and Hispanic (24.4%) than in non-Hispanic White communities (14.3%). (Statistically significant) Limited-service store advertisements for regular soda were more prevalent in non-Hispanic Black (48.1%) in comparison with non-Hispanic White (42.2%) communities (no longer statistically significant when model controlled for income).</p> <p>Soda ads were more prevalent in supermarkets/grocers located in low-income communities (25.1%) than those in higher income areas (middle income, 15.4%; high income, 10.4%) and within limited-service stores in low-income communities (47.7%) when compared with stores in middle- (41.1%) and high-income (35.8%) areas. Further, a supermarket/grocer in a low-income community was associated with higher odds of regular soda advertisements (OR = 2.14, CI = 1.32, 3.47), and a limited service store in a low-income community was associated with 35% higher odds of regular soda advertisements in comparison with higher income areas. (Statistically significant)</p> <p><b>Differences by store format:</b> Regular soda advertisements were found at 41.3% of limited service stores and 15.8% of supermarkets and grocery stores. (Statistically significant)</p>

(Continues)

**TABLE 3** (Continued)

MMCA category definition	References	Results
	Kumar, 2014 <sup>66</sup>	<p>Caregivers and adolescents reported exposure to food/beverage advertisements mostly on television (82.7% and 80.9%, respectively), followed by at the grocery store/supermarket (39.5% vs. 32.4%), on the internet/cell phone (26.4% vs. 24.5%), at the convenience store/gas station (21.3% vs. 14.8%), and at school (9.4% vs. 7.5%). Caregivers reported exposure to SSB ads at the grocery/supermarket and convenience store/gas station was significantly higher than exposure reported by adolescents.</p> <p><b>Differences by store format:</b> SSB advertisements are perceived to be more common among grocery stores/supermarkets in relation to convenience stores.</p>
	Martin-Biggers, 2013 <sup>69</sup>	<p><b>Differences by community characteristics:</b> Significantly more space for SSB products in store circulars for sites located in the more than 30% obesity-rate region than other regions (data not shown; specified SSB space more than two times higher than in other regions). Southeastern U.S. circulars tended to have more mean space dedicated to SSB products (data primarily included SSB; given two to six times as much advertising space in comparison with other regions).</p>
	Moran, 2018 <sup>70</sup>	<p><b>Differences by community characteristics:</b> Odds of SSB advertisements were 1.66 times higher during periods of SNAP benefit issuance in comparison with remainder of the month, and odds of SSB advertisements were 1.80 times higher during issuance periods in comparison to middle month dates. Settings within communities with high SNAP enrollment had 2.39 times higher odds of SSB advertisements in comparison with the remainder of the month.</p>
	Penilla, 2017 <sup>71</sup>	<p>SSB advertisements were perceived by parents to be salient in community stores and outnumbered healthy product advertisements, in turn impacting children's consumption patterns.</p>
	Robles, 2019 <sup>75</sup>	<p>Number of SSB advertisements on store exterior and interior ranged from 0 to 5 (mean 2.7). This was higher than for other products in all but two stores (e.g., alcohol, water, fruits/vegetables, and/or junk food).</p>
	Ruff, 2016 <sup>76</sup>	<p>Number of outdoor or outward-facing advertisements for SSB was on average 3.9 (although found not influential on consumer purchasing). This was higher than number of alcohol advertisements (average 2.4).</p>

(Continues)

TABLE 3 (Continued)

MMCA category definition	References	Results
	Zenk, 2020 <sup>81</sup>	Regular soda higher prevalence of promotions (interior and exterior) than other SSB products. 33.9% of advertisements for SSB on exterior, compared with 6.7% and 19.7% for artificial or unsweetened beverages; 63.7% of advertisements on interior for SSB vs. 43.5% and 46.8% for respective comparisons. Similar patterns in Sacramento, California. No significant differences in interior/exterior SSB advertisements at 6- and 12-month post-tax. Odds of interior advertisements for regular soda fell in Sacramento by 60% at 12-month post-tax.
Priming or prompting Environmental cues or product salience that prime consumer purchase of SSB products <sup>23,38</sup>	Basch, 2016 <sup>56</sup>	<b>Differences by store format:</b> In comparison with other sampled formats, department stores did not have corral with SSB products near cash registers.
	Bogart, 2019 <sup>57</sup>	Managers described that beverage companies might initiate stocking agreements regarding floor displays. For example, sales representatives might suggest display placement, although store management had final authority and could choose not to use SSB displays without telling manufacturers.
	Cohen, 2015 <sup>82</sup>	<b>Differences by store format:</b> Special floor displays for SSB most common among supercenters/wholesalers (11%), followed by grocery (7%), neighborhood (5%), and specialty (2%) stores. Not identified in chain convenience and dollar stores.
	Cohen, 2018 <sup>58</sup>	<b>Differences by community characteristics:</b> The potential exposure to SSB in grocery stores was higher in Mississippi and Alabama than Los Angeles, California stores (average number of SSB displays 92.1 vs. 88.9, respectively). <b>Differences by store format:</b> Among grocery stores, the potential for consumer exposure to SSB products was about 25 separate locations (less exposure in comparison with junk foods). Among convenience stores, potential SSB exposure occurred in about 5 locations. The majority of supermarket SSB displays (70–97%) had BCI-branded products (Coca-Cola, PepsiCo, Dr. Pepper/Snapple Group). About 59–100% of displays in convenience stores were from BCI brands.
	Harris, 2020 <sup>80</sup>	Products with added sugar had a significantly higher percentage of sales resulting from displays than products without added sugar. Child-focused SSB products had double the sales attributed to displays than products without added sugar.

(Continues)

**TABLE 3** (Continued)

MMCA category definition	References	Results
	Moran, 2018 <sup>70</sup>	<p><b>Differences by community characteristics:</b> Found 0.40 more SSB product varieties on display during periods of SNAP benefit issuance in comparison to the remainder of month (95% CI = 0.18, 0.61). Retail settings had 1.88 times higher odds of having SSB displays during SNAP issuance and were 2.75 times higher during issuance in comparison with middle month dates. In areas with high SNAP enrollment, retailers had 4.35 times higher odds of SSB displays (95% CI = 1.93, 9.98) during issuance.</p>
	Thornton, 2013 <sup>78</sup>	<p>Ranked number 1–8 regarding mean length of soft drink displays (on average 14 m; 95% CI = 12–16 m): Australia; the United States; the United Kingdom; Canada; Denmark; Netherlands; Sweden; and New Zealand. The proportion of U.S. soft drink aisle space was about 40% of all less healthy dietary products (e.g., chips, 40%; chocolate, 10%; confectionary, 10%), which was comparable with Australia and Canada regarding the countries with highest proportion of soft drink displays.</p>
Proximity Location or placement of SSB products in high impulse purchasing areas <sup>23,38</sup>	Adjoian, 2014 <sup>54</sup>	<p>About half (45%) of stores had SSB products located at one or more promotional locations (e.g., end caps of aisles, special displays, and within a refrigerator at checkout). This was less common for healthier beverage choices.</p> <p><b>Differences by community characteristics:</b> In areas with higher rather than lower consumer SSB consumption, SSB products were more commonly available in two or more locations within stores (78% vs. 65%, respectively; statistically significant). Sugary drinks placed in 2 or more locations in grocery stores were 81% in high-consumption areas and 46% in low-consumption areas. (Statistically significant)</p> <p><b>Differences by store format:</b> Placement of sugary drinks in impulse purchasing areas more common among grocery stores than bodegas (78% of grocers and 36% of bodegas had sugary drinks at one or more promotional locations). End caps of aisles were common promotional locations for sugary drinks in grocery stores (68%), followed by special displays (56%), and checkout (15%). Placement of sugary drinks in one or more promotional locations was more common among pharmacies (78%) than bodegas (36%). End caps of aisles were common promotion locations among pharmacies (68%), followed by special displays (56%) and checkout (15%).</p>

(Continues)

**TABLE 3** (Continued)

MMCA category definition	References	Results
	Barnes, 2014 <sup>55</sup>	<p>About half (55 of 119 or 46%) of store checkout areas had soda within reach of the cash register. Interior advertisements for less healthy beverages were commonly near (51 of 119) or below the cash register (17 or 119).</p> <p><b>Differences by store format:</b> Dollar stores and pharmacies more often had soda within reach of the cash register than corner/small grocery stores (89% vs. 77% vs. 35%, respectively). (Statistically significant)</p>
	Bogart, 2019 <sup>57</sup>	<p>Managers described decision making regarding SSB placement a responsibility of corporate or headquarters. SSB was described to sell better than healthier alternatives, and therefore, managers were not incentivized to change the placement of healthier alternatives (was suggested as a BCI strategy) and rather focused on increasing SSB sales.</p>
	Cohen, 2015 <sup>82</sup>	<p><b>Differences by store format:</b> SSB cash register placement most often used in grocery stores (43%), followed by supercenter/wholesaler (38%) and specialty stores (18%) and was not identified among other formats. End aisle placement of SSB most common in convenience stores (77%), followed by neighborhood stores (42%), grocers (24%) supercenter/wholesaler (10%), and specialty (8%) stores. Not identified in the dollar store.</p>
	Cohen, 2018 <sup>58</sup>	<p>End-aisle placement for SSB was common among sampled stores. Placement of SSB products was more frequent than placement of healthier alternatives or water products in assessed locations.</p> <p><b>Differences by community characteristics:</b> In grocery stores located in the South, SSB displays were less common at end-of-aisle and along perimeter walls (50% vs. 72%) than in Los Angeles, California (24% vs. 43%). Cash register displays were more frequent in the South than in Los Angeles (67% vs. 62%). Results also mirrored availability of SSB brands that participated in the BCI. (Descriptive results)</p> <p><b>Differences by store format:</b> SSBs were most placed at cash registers in grocery stores and along the perimeter of convenience stores. SSB located in store aisles was more common in convenience than grocery stores. Convenience stores were also more likely than grocers to use floor displays for SSB. Mini-cans in grocery stores were available at end-of-aisle (3%), in aisles (4%), and by cash registers (2%).</p>

pricing was available in 13 studies (45%), and one study focused on SSB product profitability (Table 3). At one small store in New Orleans, Louisiana, SSB products accounted for about 13% of the store's total profit.<sup>61</sup> This percentage represented more than all other products except beer and tobacco. Other findings noted the affordability of SSB products in general and in comparison with healthier product alternatives.<sup>58,60,64,65,67</sup> SSB products in the southeastern United States<sup>58,67</sup> tended to be priced lower than SSB products for sale in other U.S. regions. There were also somewhat conflicting variations among community stores by consumer base. Specifically, SSB purchase prices were higher in areas with high SSB consumption<sup>64</sup> and lower in stores with majority racial/ethnic minority<sup>65,67</sup> and low-income consumers.<sup>65</sup> SSB pricing variations by population were not found in two other studies.<sup>67,72</sup>

Discount pricing strategies for SSB were also frequently used, outnumbering price reductions for healthier products among sampled stores in five studies.<sup>54,59,68,72,80</sup> Such promotions encouraged the purchase of SSB in high quantity (Table 3).<sup>58,59,72</sup> Two studies found price promotions more common among supermarkets than smaller stores.<sup>72,82</sup> One study suggested price promotions may be used more routinely to sell child-focused SSB products.<sup>80</sup> Further, fewer SSB price promotions were applied after SSB taxation.<sup>81</sup> While store managers identified coupons as a popular promotion strategy, they deemed coupons less effective than in-store discounts (Table 3).<sup>57</sup> Managers believed healthier alternatives required competitive pricing relative to SSB to encourage consumption.<sup>57</sup>

### 3.2.5 | Promotion

Use of advertisements or promotional strategies (aside from price promotions)<sup>23,37</sup> for SSB were found in 13 studies (45%) (Table 3). Such promotions were identified in the majority of sampled stores among two studies<sup>54,55</sup> and another found advertisements especially frequent for regular soda.<sup>81</sup> Interior and exterior signages<sup>55,75,76</sup> were used for SSB products in addition to store circulars<sup>59</sup> and SSB product claims (e.g., "Crisp, clean, and refreshing").<sup>62</sup> There was also evidence of disproportionate use of SSB promotions among stores located in the southeastern United States<sup>69</sup> and among those with a high proportion of racial/ethnic minority and/or low-income consumers.<sup>62,63,70</sup> SSB taxation was not found to change the prevalence of interior or exterior advertisements for SSB.<sup>81</sup>

Gas-marts or limited service stores had more advertisements for SSB than other sampled stores in two studies.<sup>55,63</sup> However, parents perceived supermarkets as a primary exposure site for SSB marketing compared with smaller convenience stores.<sup>66</sup> In another study, parents identified grocery and convenience stores as a primary place where children are exposed to SSB marketing, second only to television advertisements.<sup>71</sup> Furthermore, store management described SSB manufacturers most likely to prioritize national marketing campaigns over using store promotions for SSB.<sup>57</sup>

### 3.2.6 | Priming or prompting

Seven articles (24%) identified information about environmental cues (i.e., SSB product prominence) within stores (Table 3).<sup>23,37</sup> U.S. supermarkets had a higher proportion of shelf space for SSB products (ranked second behind Australia) than supermarkets in other high-income countries (e.g., United Kingdom, Canada, and Denmark).<sup>78</sup> One study found displays for SSB products more common in southeastern U.S. stores,<sup>58</sup> and another noted less priming for SSB purchases in department stores (Table 3).<sup>56</sup> It was also reported SSB displays within supermarkets exceeded those in convenience stores,<sup>58</sup> and SSB display frequency in supermarkets was behind only supercenters/wholesalers.<sup>82</sup> Results of one study suggested displays may be used most frequently to sell SSB, especially child-focused SSB products.<sup>80</sup> A higher frequency of SSB displays (or higher product prominence) was also identified during SNAP benefit issuance periods.<sup>70</sup> Displays were described by store management as initiated through manufacturer agreements but ultimately left the decision to managers.<sup>57</sup>

### 3.2.7 | Proximity

Five studies (17%) described the placement or location of SSB products in stores.<sup>23,37</sup> These studies often documented SSB products in multiple locations (Table 3). Grocery stores had SSB products placed in impulse purchasing areas (such as checkout areas) more often than smaller stores.<sup>54,58</sup> One study found SSB placement near cash registers more common in dollar and pharmacy stores than small grocers<sup>55</sup> and another found end-aisle placement common in convenience stores.<sup>82</sup> There were some variations by geography. Checkout availability of SSB was higher in communities with residents reporting high SSB consumption.<sup>54</sup> Stores in the southeastern United States were found to have SSB products available on aisle end caps and around the perimeter more often than stores located in other measured regions.<sup>58</sup> Management described little incentive to change the placement of healthier beverage alternatives, as SSB products were perceived to sell better than no/low kcal options.<sup>57</sup> Additionally, corporate store stakeholders (rather than manufacturers) were described to plan SSB placements in stores.<sup>57</sup>

## 4 | DISCUSSION

### 4.1 | Main findings and importance

The purpose of our rapid review was to characterize MMCA strategies used to sell SSB products in U.S. food stores to inform public health research, practice, and policy approaches. Although not a main focus of many included studies, we found evidence of MMCA strategy variations based on store type and among stores with a high proportion of at-risk consumers. Whether these differences can be attributed to store size and business model or systematic regional (e.g., southeastern United States) or community-specific (e.g., low-

income) strategies for sales requires both additional investigation and the use of natural experiment or causal research designs. Likewise, as the majority of included studies relied on observational data, it is unknown to what extent diverse stakeholders (i.e., manufacturers, distributors, sales representatives, store managers, and employees) impact SSB stocking and marketing strategies in food stores. Additional research could inform opportunities for tailored policy and implementation strategies by store, region, stakeholder, and/or consumer demographics. Main findings are reported below with respect to MMCA strategies used for SSB sales.

## 4.2 | Profile, pricing, and promotion strategies to sell SSB products

Most of the studies we reviewed provided insight into profile, pricing, and promotion strategies used for SSB sales, which are widely available products in U.S. food stores given their long shelf-life, consumer demand, and profitability.<sup>25,37,61</sup> However, research showing the potential for SSB product availability, priming, and promotions to further increase during periods of SNAP issuance is concerning.<sup>70</sup> This was also identified with regard to lower targeted SSB prices among at-risk consumers<sup>65,67</sup> or in stores from regions with high consumer poverty and obesity (e.g., southeastern United States),<sup>58,65</sup> which are also populations observed to have higher rates of habitual SSB consumption.<sup>6-12</sup> These findings were somewhat contradictory regarding results from one reviewed study that identified higher SSB purchase prices in community stores with consumers reporting frequent SSB consumption.<sup>64</sup> Additionally, findings regarding the use of SSB advertisements mirror results about the use of pricing strategies, which seem targeted to at-risk consumer groups.<sup>63,69,70</sup>

These findings align with reports of targeted strategies used per population,<sup>16,31,32</sup> and results of this research suggest coordinated use of several MMCA strategies to push SSB sales among at-risk U.S. consumer groups who experience health disparities.<sup>7-9</sup> More research is required, as few included studies were designed to capture disparities of in-store MMCA strategy use by community factors such as income, location, race/ethnicity, obesity, or consumer consumption. These findings provide the most compelling argument for policy changes to influence stocking and marketing practices used to sell SSB products in U.S. food stores. Manufacturer/retailer targeting of at-risk consumer groups in food store spaces is a public health concern given the association of frequent SSB intake with obesity and NCD.<sup>5,13-15</sup> Broadly, outcomes related to poor health are predicted to cost \$94.9 trillion dollars (years 2015–2050)<sup>83</sup> and negatively impacts the broader U.S. population (e.g., beyond only those that consume SSB).

Corporate determinants of health<sup>84</sup> regarding variations in SSB stocking and marketing practices requires protective policy responses to mitigate health disparities, in conjunction with or beyond voluntary industry strategies. This review was designed around launch dates for two self-regulatory campaigns, Drink Up and the BCI. No reviewed articles included information about SSB stocking and marketing practices used by Drink Up campaign food store partners. There is some

evidence, however, that consumers exposed to the campaign purchased more bottled water.<sup>85</sup> One article described the prominence of BCI-participating SSB brands throughout stores that seem contradictory to “balance intake” messages.<sup>58</sup> Further, managers described BCI as not well aligned with business models because no incentives were provided to make changes.<sup>57</sup> There is a lack of research about how and to what extent industry commitments influence the consumer food environment,<sup>45</sup> and more research to define the role of self-regulatory and policy strategies to decrease consumer SSB consumption are required. Better evidence of how self-regulation initiatives influence stocking and marketing practices could prompt industry stakeholders to better align their practices with stated commitments (e.g., BCI recognizing product prominence as an indicator of marketing and adjusting appropriately to favor consumer loyalty).<sup>48,49</sup>

## 4.3 | Place, portion, priming or prompting, and proximity strategies to sell SSB products

We found less evidence of the use of MMCA strategies place, portion, priming or prompting, and proximity to sell SSB products among reviewed articles. This is likely due to limitations of current food environment measures or tools to appropriately capture these properties. For example, no established tools include indicators for store atmosphere properties, such as music, which could be used to influence the purchase of unhealthy products more broadly (e.g., including SSB).<sup>38</sup> Future research could incorporate measures to assess store owners' and managers' perspectives<sup>37,86,87</sup> about their use of place strategies to sell SSB products to quantify these practices for further investigation.

Also, tools may not be designed to measure all available SSB product sizes available (e.g., mini-cans, cases, 16/20 fluid-ounce bottles, or 2-L options), which limits the capacity to understand variations among product sizes regarding stocking and marketing practices. Beverage manufacturers have used mini-cans to broaden their consumer base to include health-conscious shoppers,<sup>88,89</sup> although it is unknown how MMCA strategies used to sell smaller portion sizes influences consumer purchase or SSB intake behaviors. Likewise, priming or prompting is a less-clear-cut indicator for measurement, although using exposure points (number of locations or displays of SSB)<sup>58</sup> or checklists to document the presence of shelf labels may be useful moving forward. Often, SSB products were located in impulse purchasing areas (e.g., end caps and checkouts), and current tools used in reviewed studies and elsewhere (e.g., BTG FSOE and GroPromo<sup>90</sup>) require broader application to discern SSB placement differences by store type and community characteristics.

Our review results also suggest supermarkets may prime consumers more than smaller stores regarding the purchase of SSB products, although this may be related to store size (e.g., more space for numerous SSB displays and marketing strategies). This may be one reason supermarkets have been associated with the prevalence of obesity,<sup>91</sup> despite their historical use as an indicator of favorable community food access. Research has shown optimal food access more



complex than supermarket distance,<sup>92-94</sup> and application of environmental tools and/or scanner purchasing data<sup>95</sup> to understand the influence of SSB MMCA strategies on consumers' purchase of healthy and less healthy beverages is warranted among varied store formats and communities. Such information could further inform policy strategies that change consumers' rather than community nutrition environments.

## 5 | LIMITATIONS

Our review provides directions for future public health research, practice, and policy approaches to reduce the prominence of SSB products in U.S. food stores, although conclusions should be interpreted with respect to the following limitations. We found a low number of supporting articles with information about SSB stocking and marketing practices and the observational nature of the supporting research we did identify is a limitation. More robust analyses, such as with scanner purchasing data,<sup>90</sup> are required to understand the impact or effectiveness of MMCA strategies used to sell SSB products on U.S. consumers' purchase and consumption habits by store type and consumer demographics. However, retailers' use of these strategies suggests efficacy, given the importance of profit.<sup>37</sup> The measurement tools used in most studies also lacked information about validity testing, although most were found reliable and were accompanied with training.

The search approach we used could have been inadequate to identify all relevant peer-reviewed research, although we did check references of included articles to identify missed sources, which resulted in identifying additional articles. Additionally, narrowing the review focus to assess stocking and marketing practices of only SSB products could be seen as a limitation given the DGA focus on dietary patterns rather than single, unfavorable food and beverage products or nutrients.<sup>1</sup> However, current public health responses have focused on SSB products rather than nutrients (a sugar tax) and may indicate strategies with a greater likelihood for success in the current political climate.<sup>96</sup> SSB consumption contributes to the majority of Americans' discretionary kcal and added sugar intake<sup>97</sup> and has been associated with poor dietary quality overall,<sup>97</sup> so reducing consumers' SSB intake may improve population dietary patterns.<sup>97</sup>

## 6 | FUTURE DIRECTIONS

In order to meet the goals outlined in the 2030 Agenda for Sustainable Development<sup>40-42</sup> regarding actions to improve public health, health equity, and environmental sustainability, future research should investigate food environment approaches to reduce SSB consumption.

### 6.1 | Public health

Ensuring more U.S. locations adopt SSB taxation strategies could reduce the use of SSB price promotions<sup>81</sup> (alongside resultant purchase price increases) without requiring additional policy strategies.<sup>98</sup>

Overall, comprehensive strategies are likely needed, as well as understanding the impact of coordinated public health policy and self-regulatory strategies with local-level practice approaches (e.g., consumer education; policy, systems, and environmental change strategies). Implementation outcomes, such as the acceptability, appropriateness, and feasibility of practice and policy approaches to reduce SSB product prominence in U.S. food stores are also critical to inform practical approaches likely to initiate retail changes long term.<sup>20,99,100</sup> Finally, advocacy groups have proposed retail licensing approaches as a potential opportunity to reduce the prominence of SSB products in the food environment.<sup>16</sup> Such approaches have not yet been implemented in the U.S. and require stakeholder-engaged investigations to inform licensing capacity to protect at-risk consumers.

### 6.2 | Health equity

Policy strategies should be investigated through SNAP and WIC-authorization avenues, as SNAP and WIC participants have reported more frequent SSB consumption than nonparticipant populations.<sup>10,11</sup> Evidence suggests retailers can successfully adapt inventory to support changes to food package items, as with the WIC 2009 policy change,<sup>100</sup> and similar changes to SNAP could also impact stocking and marketing practices used in SNAP-authorized stores.<sup>34</sup> However, any retail changes should coordinate with changes to allowable and non-allowable SNAP purchasing, as there has been tremendous pushback to supply changes that do not address consumer demand.<sup>99</sup> Further, changes to SNAP benefit distribution schedules (e.g., distributed throughout the month, rather than specific timepoints) may deter targeted stocking and marketing strategies to sell SSB during times when SNAP shoppers are most likely to be in-store.<sup>70</sup>

SNAP and WIC authorization policy change approaches would ideally be coordinated in partnership with community campaigns and educational outreach, perhaps using the Cooperative Extension Service (CES) network as a delivery mode.<sup>101</sup> For example, Schwartz et al. described the results of a multicomponent social marketing campaign in support of better beverage consumption (e.g., water and 100% fruit juice), which was successful in reducing retail sales of SSB by almost 20%.<sup>102</sup> Effective programs can be disseminated through CES, as local educators have established community relationships and offer education programs that target vulnerable audiences. This may be a viable tactic that mirrors SSB manufacturer efforts to promote SSB sales as described in review results.<sup>57</sup> CES is also uniquely positioned to build community capacity for preventative health strategies and capture at-risk populations' perspectives to inform tailored public health and policy approaches to mitigate health disparities.<sup>102</sup>

### 6.3 | Environmental sustainability

The prominence of SSB not only poses a risk for obesity and NCD but also has implications for environmental sustainability.<sup>40-42</sup> The food

industry, including beverage manufacturers, has focused on sustainability practices in social responsibility commitments,<sup>42,45</sup> often for the sustainable sourcing of product ingredients.<sup>42</sup> However, this language fails to acknowledge the impact of SSB ingredients and MMCA strategies used to push sales of SSB on human health outcomes. Targeted advocacy and consumer grassroots campaigns may assist in a more balanced industry view of achieving environmental sustainability, given human and environmental health are interconnected.

## ACKNOWLEDGEMENTS

Authors acknowledge Khawlah Kheshaifaty, MS for assisting with manuscript and reference formatting in addition to reference list checks of articles included in the review to complement authors' efforts. Additionally, members of the Healthy Retail Research Convening held in Washington, D.C. are acknowledged for comments and suggestions that helped to improve the rapid review.

## FUNDING INFORMATION

This research was funded by Healthy Eating Research, a national program of the Robert Wood Johnson Foundation and the USDA National Institute of Food and Agriculture, Hatch project 1024670. While Healthy Eating Research stakeholders reviewed the manuscript prior to submission, no funders had a role in the design, synthesis, or conclusions of this research.

## CONFLICT OF INTEREST

Authors have no conflicts of interest to report.

## AUTHOR CONTRIBUTIONS

BH led the review and designed the approach with substantial input on review design and results interpretation from all coauthors. BH, DH, CS, JP, DQ, and VH each extracted data from included articles and participated in additional quality checking procedures. BH wrote the manuscript, and all coauthors provided comprehensive edits and suggestions. All authors approved of the final version of this manuscript.

## ORCID

Bailey Houghtaling  <https://orcid.org/0000-0003-3301-7258>

Denise Holston  <https://orcid.org/0000-0002-2426-089X>

Jerrold Penn  <https://orcid.org/0000-0001-5576-7098>

Valisa Hedrick  <https://orcid.org/0000-0002-1534-9198>

## REFERENCES

1. U.S. Department of Health and Human Services. U.S. Department of Agriculture. 2015–2020 Dietary Guidelines for Americans. 8th Ed. 2015. Available at <http://health.gov/dietaryguidelines/2015/guidelines/>
2. Center for Disease Control and Prevention. Get the facts: sugar-sweetened beverages and consumption. 2017. <https://www.cdc.gov/nutrition/data-statistics/sugar-sweetened-beverages-intake.html>. Accessed March 30, 2020.
3. Powell ES, Smith-Taillie LP, Popkin BM. Added sugars intake across the distribution of US children and adult consumers: 1977–2012. *J Acad Nutr Diet*. 2016;116(10):1543, e1541-1550.
4. Rethink your drink. <http://shapeupscoalition.org/projects/ryd/>. Accessed May 12, 2020.
5. Johnson RK, Appel LJ, Brands M, et al. Dietary sugars intake and cardiovascular health: a scientific statement from the American Heart Association. *Circulation*. 2009;120(11):1011-1020.
6. Rosinger A, Herrick K, Gahche J, Park S. Sugar-sweetened beverage consumption among U.S. adults, 2011–2014. *NCHS Data Brief*. 2017; 270:1-8.
7. Lundeen E, Park S, Pan L, O'Toole T, Matthews K, Blanck HM. Obesity prevalence among adults living in metropolitan and non-metropolitan counties—United States, 2016. *Morb Mortal Wkly Rep*. 2018;67(23):653-658.
8. Garcia MC, Faul M, Massetti G, Thomas CC, Hong Y, Bauer UE. Reducing potentially excess deaths from the five leading causes of death in the rural United States. *MMWR Surveill Summ*. 2017;66(2): 1-7.
9. Singh GK, Daus GP, Allender M, Ramey CT, Martin EK, Perry C. Social determinants of health in the United States: addressing major health inequality trends for the nation, 1935–2016. *Int J MCH AIDS*. 2017;6(2):139-164.
10. Nguyen BT, Powell LM. Supplemental nutrition assistance program participation and sugar-sweetened beverage consumption, overall and by source. *Prev Med*. 2015;81:82-86.
11. Watowicz RP, Taylor CA. A comparison of beverage intakes in US children based on WIC participation and eligibility. *J Nutr Educ Behav*. 2014;46(3):S59-S64.
12. Imoisili O, Park S, Lundeen EA, Pan L, O'Toole T, Siegel KR. Sugar-sweetened beverage intake among adults, by residence in metropolitan and nonmetropolitan counties in 12 states and the District of Columbia, 2017. *Prev Chronic Dis*. 2020;17:1-7.
13. Hu FB, Malik VS. Sugar-sweetened beverages and risk of obesity and type 2 diabetes: epidemiologic evidence. *Physiol Behav*. 2010; 100(1):47-54.
14. Fuchs MA, Sato K, Niedzwiecki D, et al. Sugar-sweetened beverage intake and cancer recurrence and survival in CALGB 89803 (Alliance). *PLoS One*. 2014;9(6):e99816.
15. Malik VS, Schulze MB, Hu FB. Intake of sugar-sweetened beverages and weight gain: a systematic review. *Am J Clin Nutr*. 2006;84(2): 274-288.
16. Sugary drink playbook: Reducing sugary drinks to promote community health and equity. ChangeLab Solutions. Oakland, CA: 2020.
17. Redondo M, Hernandez-Aguado I, Lumbreras B. The impact of the tax on sweetened beverages: a systematic review. *Am J Clin Nutr*. 2018;108(3):548-563.
18. Teng AM, Jones AC, Mizdrak A, Signal L, Genc M, Wilson N. Impact of sugar-sweetened beverage taxes on purchases and dietary intake: systematic review and meta-analysis. *Obes Rev*. 2019;20(9):1187-1204.
19. Backholer K, Sarink D, Beauchamp A, et al. The impact of a tax on sugar-sweetened beverages according to socio-economic position: a systematic review of the evidence. *Public Health Nutr*. 2016;19(17): 3070-3084.
20. Proctor E, Silmere H, Raghavan R, et al. Outcomes for implementation research: conceptual distinctions, measurement challenges, and research agenda. *Adm Policy Ment Health*. 2011;38(2):65-76.
21. Dardick H. (September 25, 2017). *How Preckwinkle's Pop Tax Backfired*. Chicago Tribune.
22. Cawley J, Thow AM, Wen K, Frisvold D. The economics of taxes on sugar-sweetened beverages: a review of the effects on prices, sales, cross-border shopping, and consumption. *Annu Rev Nutr*. 2019;39 (1):317-338.

23. Kraak VI, Englund T, Misyak S, Serrano EL. A novel marketing mix and choice architecture framework to nudge restaurant customers toward healthy food environments to reduce obesity in the United States. *Obes Rev.* 2017;18(8):852-868.
24. Thaler RH, Sunstein CR. *Nudge: Improving Decisions about Health, Wealth, and Happiness.* New Haven, CT: Yale University Press; 2008.
25. Davis G, Serrano E. *Food and Nutrition Economics.* New York, NY: Oxford University Press; 2016.
26. Cohen DA, Babey SH. Contextual influences on eating behaviours: heuristic processing and dietary choices. *Obes Rev.* 2012;13(9):766-779.
27. Swinburn BA, Sacks G, Hall KD, et al. The global obesity pandemic: shaped by global drivers and local environments. *Lancet.* 2011;378(9793):804-814.
28. Thorndike AN, Sunstein CR. Obesity prevention in the supermarket-choice architecture and the supplemental nutrition assistance program. *Am J Public Health.* 2017;107(10):1582-1583.
29. Thompson C, Cummins S, Brown T, Kyle R. Understanding interactions with the food environment: an exploration of supermarket food shopping routines in deprived neighbourhoods. *Health Place.* 2013;19:116-123.
30. Fielding-Singh PA. Taste of inequality: food's symbolic value across the socioeconomic spectrum. *Sociol Sci.* 2017;4(17):424-448.
31. Harris JL, Schwartz MB, LoDolce M, et al Sugary drink marketing to youth: Some progress but much room to improve. Rudd Center for Food Policy and Obesity. Storrs, CT: 2014.
32. Dowling EA, Roberts C, Adjoian T, Farley SM, Dannefer R. Disparities in sugary drink advertising on New York city streets. *Am J Prev Med.* 2020;58(3):e87-e95.
33. Volpe R, Jaenicke EC, Chenarides L. Store formats, market structure, and consumers' food shopping decisions. *Appl Econ Perspect P.* 2018;40(4):672-694.
34. Bleich SN, Moran AJ, Vercammen KA, et al. Strengthening the public health impacts of the supplemental nutrition assistance program through policy. *Annu Rev Public Health.* 2020;41(1):453-480.
35. U.S. Department of Agriculture. *Special Supplemental Nutrition Program for Women, Infants and Children (WIC) revisions in the WIC food packages; Final rule.* Washington, DC: US Government Printing Office; 2014.
36. U.S. Department of Agriculture. *Enhancing retailer standards in the Supplemental Nutrition Assistance Program (SNAP); Final rule.* 81 FR 90675 Washington, DC: US Government Printing Office; 2016.
37. Houghtaling B, Serrano E, Kraak VI, Harden SM, Davis GC, Misyak SA. A systematic review of factors that influence food store owner and manager decision making and ability or willingness to use choice architecture and marketing mix strategies to encourage healthy consumer purchases in the United States, 2005-2017. *Int J Behav Nutr Phys Act.* 2019;16(1):1-14.
38. Biswas D, Lund K, Szocs C. Sounds like a healthy retail atmospheric strategy: effects of ambient music and background noise on food sales. *J Acad Mark.* 2019;47(1):37-55.
39. Von Philipsborn P, Stratil JM, Burns J, et al. Environmental interventions to reduce the consumption of sugar-sweetened beverages and their effects on health. *Cochrane Database Syst Rev.* 2019;6(6):CD012292.
40. United Nations. *Transforming our World: The 2030 agenda for sustainable development.* New York, NY: 2015.
41. Ahmed S, Byker SC. Supporting sustainable development goals through sustainable diets. In: *Good Health and Well-Being. Encyclopedia of the UN Sustainable Development Goals.* Basel, Switzerland: Springer, Cham; 2019.
42. Scott C. Sustainably sourced junk food? Big food and the challenge of sustainable diets. *Glob Environ Polit.* 2018;18(2):93-113.
43. Moher D, Liberati A, Tetzlaff J, Altman DG, Group P. Preferred reporting items for systematic reviews and meta-analyses: the PRISMA statement. *PLoS Med.* 2009;6(7):e1000097.
44. Tricco AC, Langlois EV, Straus SE. *Rapid Reviews to Strengthen Health Policy and Systems: A Practical Guide.* World Health Organization: Geneva, Switzerland; 2017.
45. Houghtaling B, Serrano E, Kraak VI, Harden SM, Davis GC, Misyak S. Availability of supplemental nutrition assistance program (SNAP)-authorized retailers' voluntary commitments to encourage healthy dietary purchases using marketing-mix and choice-architecture strategies. *Public Health Nutr.* 2020;23(10):1745-1753.
46. International Bottled Water Association. (July 23, 2014). Michelle Obama's Drink Up campaign increases bottled water sales. Alexandria, VA.
47. Partnership for a healthier America. About Drink Up. n.d. <https://www.ahealthieramerica.org/articles/about-drink-up-260>. Accessed 4 April, 2020.
48. Industry efforts. <https://www.balanceus.org/industry-efforts/> Accessed May 14, 2020.
49. Cohen D. Evaluation of the Balance Calories Initiative, 2016 baseline, Alabama and Mississippi. In: Inter-university Consortium for Political and Social Research [distributor]; 2018.
50. Volpe R, Kuhns A, Jaenicke T. Store formats and patterns in household grocery purchases. Economic Research Service: U.S. Department of Agriculture. 2017.
51. Souto RQ, Khanassov V, Hong QN, Bush PL, Vedel I, Pluye P. Systematic mixed studies reviews: updating results on the reliability and efficiency of the mixed methods appraisal tool. *Int J Nurs Stud.* 2015;52(1):500-501.
52. Hong QN, Pluye P, Fabregues S, et al. Improving the content validity of the mixed methods appraisal tool: a modified E-Delphi study. *J Clin Epidemiol.* 2019;111:49-59. e41
53. Pluye P, Hong QN. Combining the power of stories and the power of numbers: mixed methods research and mixed studies reviews. *Annu Rev Public Health.* 2014;35(1):29-45.
54. Adjoian T, Dannefer R, Sacks R, Van Wye G. Comparing sugary drinks in the food retail environment in six NYC neighborhoods. *J Community Health.* 2014;39(2):327-335.
55. Barnes TL, Pelletier JE, Erickson DJ, Caspi CE, Harnack LJ, Laska MN. Healthfulness of foods advertised in small and non-traditional urban stores in Minneapolis-St. Paul, Minnesota, 2014. *Prev Chronic Dis.* 2016;13:E153. <https://doi.org/10.5888/pcd13.160149>
56. Basch CH, Kernan WD, Menafro A. Presence of candy and snack food at checkout in chain stores: results of a pilot study. *J Community Health.* 2016;41(5):1090-1093.
57. Bogart LM, Castro G, Cohen DA. A qualitative exploration of parents', youths' and food establishment managers' perceptions of beverage industry self-regulation for obesity prevention. *Public Health Nutr.* 2019;22(5):805-813.
58. Cohen DA, Bogart L, Castro G, Rossi AD, Williamson S, Han B. Beverage marketing in retail outlets and the balance calories initiative. *Prev Med.* 2018;115:1-7.
59. Ethan D, Samuel L, Basch CH. An analysis of Bronx-based online grocery store circulars for nutritional content of food and beverage products. *J Community Health.* 2013;38(3):521-528.
60. Evans KA, Stewart PA, Cook SR, Seplaki CL, Rich DQ, Fernandez ID. The relative costs of high- vs. low-energy-density foods and more vs. less healthful beverages consumed by children. *J Hunger Environ Nutr.* 2018;13(2):240-254.
61. Futrell Dunaway L, Mundorf AR, Rose D. Fresh fruit and vegetable profitability: insights from a corner store intervention in New Orleans, Louisiana. *J Hunger Environ Nutr.* 2016;12(3):352-361.

62. Grigsby-Toussaint DS, Rooney MR. Food marketing targeting youth and families: what do we know about stores where moms actually shop? *J Environ Public Health*. 2013;2013:674181-674188. <https://doi.org/10.1155/2013/674181>
63. Isgor Z, Powell L, Rimkus L, Chaloupka F. Associations between retail food store exterior advertisements and community demographic and socioeconomic composition. *Health Place*. 2016;39:43-50.
64. Jilcott Pitts SB, Wu Q, Sharpe PA, et al. Preferred healthy food nudges, food store environments, and customer dietary practices in 2 low-income southern communities. *J Nutr Educ Behav*. 2016;48(10):735-742. e731
65. Kern DM, Auchincloss AH, Ballester LS, Robinson LF. Neighbourhood variation in the price of soda relative to milk and its association with neighbourhood socio-economic status and race. *Public Health Nutr*. 2016;19(18):3386-3396.
66. Kumar G, Zytneck D, Onufrak S, et al. Caregiver and adolescent responses to food and beverage marketing exposures through an online survey. *Child Obes*. 2014;10(1):64-71.
67. Leider J, Powell LM. Sugar-sweetened beverage prices: variations by beverage, food store, and neighborhood characteristics, 2017. *Prev Med Rep*. 2019;15:100883. <https://doi.org/10.1016/j.pmedr.2019.100883>
68. Lopez A, Seligman HK. Online grocery store coupons and unhealthy foods, United States. *Prev Chronic Dis*. 2014;11:130211. <https://doi.org/10.5888/pcd11.130211>
69. Martin-Biggers J, Yorkin M, Aljallad C, et al. What foods are US supermarkets promoting? A content analysis of supermarket sales circulars. *Appetite*. 2013;62:160-165.
70. Moran AJ, Musicus A, Gorski Findling MT, et al. Increases in sugary drink marketing during supplemental nutrition assistance program benefit issuance in New York. *Am J Prev Med*. 2018;55(1):55-62.
71. Penilla C, Tschann JM, Sanchez-Vaznaugh EV, Flores E, Ozer EJ. Obstacles to preventing obesity in children aged 2 to 5 years: Latino mothers' and fathers' experiences and perceptions of their urban environments. *Int J Behav Nutr Phys Act*. 2017;14(1):148. <https://doi.org/10.1186/s12966-017-0605-9>
72. Powell LM, Kumanyika SK, Isgor Z, Rimkus L, Zenk SN, Chaloupka FJ. Price promotions for food and beverage products in a nationwide sample of food stores. *Prev Med*. 2016;86:106-113.
73. Racine EF, Batada A, Solomon CA, Story M. Availability of foods and beverages in supplemental nutrition assistance program-authorized dollar stores in a region of North Carolina. *J Acad Nutr Diet*. 2016;116(10):1613-1620.
74. Racine EF, Kennedy A, Batada A, Story M. Foods and beverages available at SNAP-authorized drugstores in sections of North Carolina. *J Nutr Educ Behav*. 2017;49(8):674-683. e671
75. Robles B, Barragan N, Smith B, Caldwell J, Shah D, Kuo T. Lessons learned from implementing the supplemental nutrition assistance program education small corner store project in Los Angeles County. *Prev Med Rep*. 2019;16:100997. <https://doi.org/10.1016/j.pmedr.2019.100997>
76. Ruff RR, Akhund A, Adjoian T. Small convenience stores and the local food environment: an analysis of resident shopping behavior using multilevel modeling. *Am J Health Promot*. 2016;30(3):172-180.
77. Singleton CR, Li Y, Duran AC, Zenk SN, Odoms-Young A, Powell LM. Food and beverage availability in small food stores located in healthy food financing initiative eligible communities. *Int J Environ Res Public Health*. 2017;14(10):1242. <https://doi.org/10.3390/ijerph14101242>
78. Thornton LE, Cameron AJ, McNaughton SA, Waterlander WE, Sodergren M, Svastisalee C. Does the availability of snack foods in supermarkets vary internationally? *Int J Behav Nutr Phys Act*. 2013;10(1):56. <https://doi.org/10.1186/1479-5868-10-56>
79. Lucan SC, Maroko AR, Jin A, Chen A, Pan C, Sosa G. Change in an urban food environment within a single year: considerations for food-environment research and community health. *Prev Med Rep*. 2020;101102. <https://doi.org/10.1016/j.pmedr.2020.101102>
80. Harris LJ, Webb V, Sacco SL, Pomeranz J. Marketing to children in supermarkets: an opportunity for public policy to improve children's diets. *Int J Environ Res Public Health*. 2020;17(4):1284. <https://doi.org/10.3390/ijerph17041284>
81. Zenk SN, Leider J, Pugach O, Pipito AA, Powell LM. Changes in beverage marketing at stores following the Oakland sugar-sweetened beverage tax. *Am J Prev Med*. 2020;58(5):648-656.
82. Cohen DA, Collins R, Hunter G, Ghosh-Dastidar B, Dubowitz T. Store impulse marketing strategies and body mass index. *Am J Public Health*. 2015;105(7):1446-1452.
83. Chen S, Kuhn M, Prettner K, Bloom DE. The macroeconomic burden of noncommunicable diseases in the United States: estimates and projections. *PLoS One*. 2018;13(11):e0206702.
84. McKee M, Stuckler D. Revisiting the corporate and commercial determinants of health. *Am J Public Health*. 2018;108(9):1167-1170.
85. The Neilson Company. The Drink Up campaign is improving America's health one water bottle at a time. 2015.
86. Houghtaling B, Serrano E, Dobson L, et al. Rural independent and corporate supplemental nutrition assistance program (SNAP)-authorized store owners' and managers' perceived feasibility to implement marketing-mix and choice-architecture strategies to encourage healthy consumer purchases. *Transl Behav Med*. 2019;9(5):888-898.
87. McMahon EJ, Jaenke R, Brimblecombe J. A mobile app to rapidly appraise the in-store food environment: reliability, utility, and construct validity study. *JMIR Mhealth Uhealth*. 2020;8(7):e16971.
88. Tuttle B. Why soda drinkers are happily paying more to get less. Money, Food & Drink. 2016
89. Monica, PRL. Small cans lead to big sales for Coca-Cola. CNN Business 2019.
90. Kerr J, Sallis JF, Bromby E, Glanz K. Assessing reliability and validity of the GroPromo audit tool for evaluation of grocery store marketing and promotional environments. *J Nutr Educ Behav*. 2012;44(6):597-603.
91. Houghtaling B, Kniola D, Misyak S. Supplemental nutrition assistance program (SNAP)-authorized grocery, convenience, dollar, and restaurant or delivery service settings are associated with increased obesity prevalence in Virginia. *Am J Health Promot*. 2020;890117120934610. <https://doi.org/10.1177/0890117120934610>
92. Ver Ploeg M, Wilde PE. How do food retail choices vary within and between food retail environments? *Food Policy*. 2018;79:300-308.
93. Chen M, Creger T, Howard V, Judd SE, Harrington KF, Fontaine KR. Association of community food environment and obesity among US adults: a geographical information system analysis. *J Epidemiol Community Health*. 2019;73(2):148-155.
94. Hollis-Hansen K, Vermont L, Zafron ML, Seidman J, Leone L. The introduction of new food retail opportunities in lower-income communities and the impact on fruit and vegetable intake: a systematic review. *Transl Behav Med*. 2019;9(5):837-846.
95. Zhen C, Wohlgenant MK, Karns S, Kaufman P. Habit formation and demand for sugar-sweetened beverages. *Am J Agr Econ*. 2011;93(1):175-193.
96. Gollust SE, Barry CL, Niederdeppe J. Americans' opinions about policies to reduce consumption of sugar-sweetened beverages. *Prev Med*. 2014;63:52-57.
97. Hedrick VE, Davy BM, Duffey KJ. Is beverage consumption related to specific dietary pattern intakes? *Curr Nutr Rep*. 2015;4(1):72-81.
98. Watt TL, Beckert W, Smith RD, Cornelsen L. Reducing consumption of unhealthy foods and beverages through banning price

- promotions: what is the evidence and will it work? *Public Health Nutr.* 2020;23(12):2228-2233.
99. Powel LM, Singleton CR, Li Y, et al. Changes to SNAP-authorized retailer stocking requirements and the supply of foods and beverages in low-income communities in seven U.S. states. *Transl Behav Med.* 2019;9(5):857-864.
100. Haynes-Maslow L, Andress L, Jilcott Pitts S, et al. Arguments used in public comments to support or oppose the US Department of Agriculture's minimum stocking requirements: a content analysis. *J Acad Nutr Diet.* 2018;118(9):1664-1672.
101. Strayer TE, Balis LE, Harden SM. Partnering for successful dissemination: how to improve public health with the National Cooperative Extension System. *J Public Health Manag Pract.* 2020;26(2): 184-186.
102. Schwartz MB, Schneider GE, Choi YY, et al. Association of a community campaign for better beverage choices with beverage purchases from supermarkets. *JAMA Intern Med.* 2017;177(5): 666-674.

**How to cite this article:** Houghtaling B, Holston D, Szocs C, Penn J, Qi D, Hedrick V. A rapid review of stocking and marketing practices used to sell sugar-sweetened beverages in U.S. food stores. *Obesity Reviews.* 2021;22:e13179. <https://doi.org/10.1111/obr.13179>