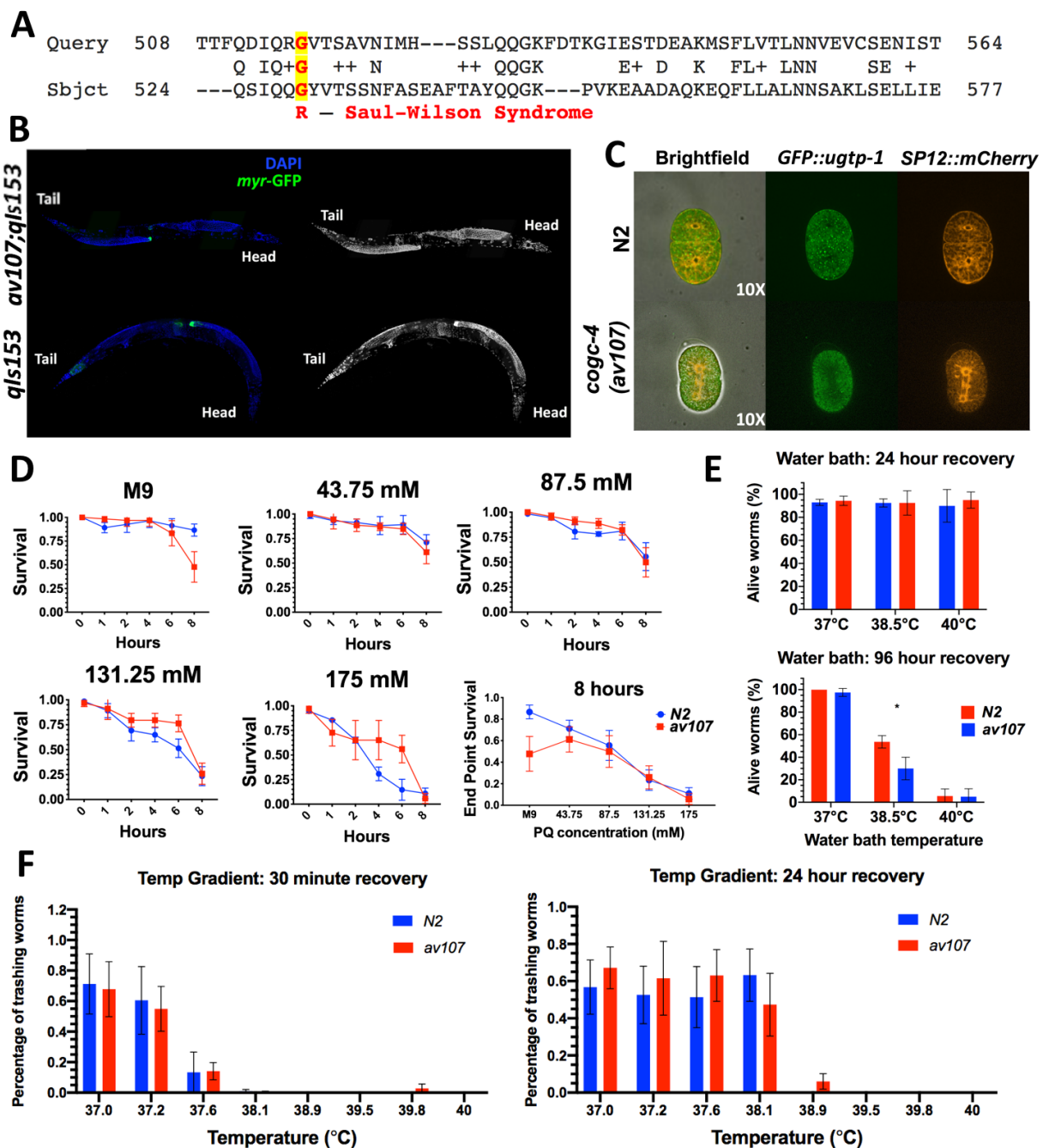


# Corrigendum: Saul-Wilson Syndrome Missense Allele Does Not Show Obvious Golgi Defects in a *C. elegans* Model

Isabella Zafra, Benjamin Nebenfuehr and Andy Golden



## Description

For Zafra, I; Nebenfuehr, B; Golden, A (2021). Saul-Wilson Syndrome Missense Allele Does Not Show Obvious Golgi Defects in a *C. elegans* Model. microPublication Biology. 10.17912/micropub.biology.000373.

The authors correct the following:

Figure: Panel C above the image of the embryo, the Golgi marker strain genotype “*ugt-1p::GFP*” is corrected to: “*GFP::ugt-1*”

Figure legend: Where Panel C is described, it states, “No co-localization of ER (*SP12::GFP*) and Golgi (*ugt-1::mChr*) markers observed in 2-cell embryos.”

3/24/2021 - Open Access

This is now corrected to: “No co-localization of ER (SP12::mChr) and Golgi (*GFP::ugtp-1*) markers observed in 2-cell embryos.”

Reagents: The Golgi marker strain genotype is written as “WH351: *pie-1::GFP::ugtp-1 + unc119(+)*”

This is now corrected to: “WH351: *pie-1p::GFP::ugtp-1 + unc119(+)*”.

**Reviewed By:**

**History:** Received March 23, 2021 **Accepted** March 24, 2021 **Published** March 24, 2021

**Copyright:** © 2021 by the authors. This is an open-access article distributed under the terms of the Creative Commons Attribution 4.0 International (CC BY 4.0) License, which permits unrestricted use, distribution, and reproduction in any medium, provided the original author and source are credited.

**Citation:** Zafra, I; Nebenfuehr, B; Golden, A (2021). Corrigendum: Saul-Wilson Syndrome Missense Allele Does Not Show Obvious Golgi Defects in a *C. elegans* Model. microPublication Biology. <https://doi.org/10.17912/micropub.biology.000379>