




REVIEW

Immune Memory Focus

Tissue-resident memory T cells in tumor immunity and immunotherapy

Karolina Okta^{1,2,3} , Donna L. Farber^{4,5,6} , and Weiping Zou^{1,2,7,8,9} 

Tissue-resident memory T cells (T_{RM}) represent a heterogeneous T cell population with the functionality of both effector and memory T cells. T_{RM} express residence gene signatures. This feature allows them to traffic to, reside in, and potentially patrol peripheral tissues, thereby enforcing an efficient long-term immune-protective role. Recent studies have revealed T_{RM} involvement in tumor immune responses. T_{RM} tumor infiltration correlates with enhanced response to current immunotherapy and is often associated with favorable clinical outcome in patients with cancer. Thus, targeting T_{RM} may lead to enhanced cancer immunotherapy efficacy. Here, we review and discuss recent advances on the nature of T_{RM} in the context of tumor immunity and immunotherapy.

Introduction

Tissue-resident memory T cells (T_{RM}) reside in peripheral tissues, patrol their surroundings, and rapidly respond to alarming signals (Jiang et al., 2012; Schenkel et al., 2014; Park and Kupper, 2015; Clark, 2015; Dijkgraaf et al., 2019). These features enable them to potentially serve as critical players in antitumor surveillance and immunity. Early studies in viral infections have revealed that T cells were retained in tissues, including human and murine skin as well as murine small intestine and lung tissues (Zhu et al., 2007; Gebhardt et al., 2009; Masopust et al., 2010; Teijaro et al., 2011). In support of T_{RM} tissue retention, T_{RM} down-regulate the expression of markers for tissue egress and express surface molecules that enable their retention in tissues (Kumar et al., 2017; Park et al., 2019; Raphael et al., 2020; Byrne et al., 2020). T_{RM} differentiation is guided by transcription programs common to both effector and memory T cells (Milner and Goldrath 2018), consistent with their persistence in tissues as memory T cells yet retaining rapid effector function for immune protection. T_{RM} are defined in multiple infection models to be retained in tissues, as shown in parabiosis experiments in mice, antibody in vivo labeling, and in other approaches that mark and monitor tissue T cells (Szabo et al., 2019; Masopust and Soerens, 2019). Of note, the transcriptome signature of T_{RM}

suggests a “tissue-tailored” retention model rather than a “one size fits all” model, highlighting tissue- and organ-specific immune regulation, also named tissue- and organ-specific “immunostats” (Amsen et al., 2018; Pao et al., 2018). Tissue-specific adaptations may enable T_{RM} to maintain homeostasis in a site-specific fashion. Intriguingly, transcriptionally and functionally distinct T_{RM} subsets and T_{RM} precursors have been observed in the murine small intestine during infection (Kurd et al., 2020). This suggests a high heterogeneity and complexity of T_{RM} populations.

Compared with their protective role in infectious diseases (Wu et al., 2018; Wilk and Mills, 2018; Muruganandah et al., 2018; O’Hara et al., 2020), the importance and significance of T_{RM} in tumor immunity are not adequately characterized. Nevertheless, recent studies in cancer-bearing mouse models have indicated a pivotal role of T_{RM} in antitumor immunity in several tumor types (Nizard et al., 2017; Milner et al., 2017; Malik et al., 2017; Enamorado et al., 2017). Moreover, human studies show an association between tumor T_{RM} and improved responses to immunotherapy and favorable clinical outcome in patients with cancer (Table 1). These findings fuel interest in T_{RM} research in cancer immunology and immunotherapy. Here, we review the current understanding of T_{RM} from mouse

¹Department of Surgery, University of Michigan Rogel Cancer Center, Ann Arbor, MI; ²Center of Excellence for Cancer Immunology and Immunotherapy, University of Michigan Rogel Cancer Center, Ann Arbor, MI; ³Department of Oncological Gynecology and Gynecology, Medical University of Lublin, Lublin, Poland; ⁴Columbia Center for Translational Immunology, Columbia University Medical Center, New York, NY; ⁵Department of Surgery, Columbia University Medical Center, New York, NY; ⁶Department of Microbiology and Immunology, Columbia University Medical Center, New York, NY; ⁷Department of Pathology, University of Michigan School of Medicine, Ann Arbor, MI; ⁸Graduate Program in Immunology, University of Michigan School of Medicine, Ann Arbor, MI; ⁹Graduate Program in Cancer Biology, University of Michigan School of Medicine, Ann Arbor, MI.

Correspondence to Weiping Zou: wzou@med.umich.edu; Donna L. Farber: df2396@cumc.columbia.edu.

© 2021 Okta et al. This article is distributed under the terms of an Attribution–Noncommercial–Share Alike–No Mirror Sites license for the first six months after the publication date (see <http://www.rupress.org/terms/>). After six months it is available under a Creative Commons License (Attribution–Noncommercial–Share Alike 4.0 International license, as described at <https://creativecommons.org/licenses/by-nc-sa/4.0/>).



Table 1. **Clinical relevance of T_{RM} in patients with cancer**

Cancer types	T_{RM} phenotype	Correlation with clinical features	References
Breast cancer	CD8 ⁺ , CD103 ⁺	Intratumoral CD103 ⁺ CD8 ⁺ T cells are positively associated with RFS and OS in estrogen receptor–negative basal-like breast cancer.	Wang et al., 2016
		CD8 ⁺ T _{RM} gene signature is associated with improved DFS and OS in patients with TNBC.	Savas et al., 2018
		Levels of CD103 ⁺ CD8 ⁺ T cells are higher in TNBCs in patients without tumor relapse than with tumor relapse.	Egelston et al., 2019
Bladder cancer	CD8 ⁺ , CD103 ⁺ , CD69 ⁺ , CD49a ⁺ , PD-1 ⁺	Levels of CD103 ⁺ CD8 ⁺ T cells are negatively associated with tumor size and are positively associated with OS and RFS.	Wang et al., 2015
		High T _{RM} tumor infiltration is associated with lower tumor stage.	Hartana et al., 2018
Cervical cancer	CD8 ⁺ , CD103 ⁺ , PD-1 ⁺ , Gzmb ⁺	CD103 expression is associated with improved DSS.	Komdeur et al., 2017
		Prognostic benefit of increased CD103 expression is observed in patients treated with radiotherapy.	
		Abundance of intraepithelial CD103 ⁺ cells is associated with improved DSS and DFS in patients with or without radio(chemo)therapy.	
Colorectal cancer	CD8 ⁺ , CD103 ⁺	High density of CD103 ⁺ cells is associated with DFS.	Huang et al., 2017
		High density of CD103 ⁺ cells is negatively associated with OS and DFS in patients with KRAS WT tumors.	
Endometrial cancer	CD8 ⁺ , CD103 ⁺ , PD-1 ⁺	CD103 ⁺ cells are associated with prolonged DSS.	Workel et al., 2016
Esophageal cancer	CD8 ⁺ , CD103 ⁺ , PD-1 ⁺ , TIM3 ⁺	High density of CD103 ^{hi} CD8 ^{hi} cells is associated with improved OS.	Han et al., 2020
Gastric cancer	CD103 ⁺ , CD69 ⁺ , PD-1 ⁺ , TIGIT ⁺ , CD39 ⁺	Presence of CD8 ⁺ CD103 ⁺ cells is associated with improved OS.	Lin et al., 2020
Hepatocellular carcinoma	CD8 ⁺ , CD103 ⁺	High density of CD8 ⁺ CD103 ⁺ cells is associated with improved OS.	Lim et al., 2019
Head and neck cancer	CD8 ⁺ , CD103 ⁺ , CD39 ⁺	High frequencies of CD103 ⁺ CD39 ⁺ cells are associated with improved OS.	Duhén et al., 2018
		High expression of CD103 is associated with improved OS.	
Lung cancer	CD8 ⁺ , CD103 ⁺ , CD69 ⁺ , CD49a ⁺ , PD-1 ⁺ , 4-1BB ⁺ , CXCR6 ⁺ , CD39 ⁺ , TIM3 ⁺	High levels of CD103 ⁺ cells are associated with improved OS in total tumor and stromal region.	Djenidi et al., 2015
		High levels of CD103 ⁺ cells are associated with improved DFS in total tumor, epithelial tumor islets, and stromal region.	Ganesan et al., 2017
		High density of CD103 ⁺ cells is associated with improved OS.	Duhén et al., 2018
		High expression of both CD103 and CD39, as well as CD103 alone, is associated with improved OS.	Koh et al., 2017
		High numbers of intratumoral, but not stromal, CD103 ⁺ cells are associated with prolonged DFS and OS.	Clarke et al., 2019
		PD-1 ⁺ TIM3 ⁺ cells are enriched in responders to anti–PD-1 therapy.	Nizard et al., 2017
		High intratumoral CD103 ⁺ cells are associated with improved OS.	
Melanoma	CD8 ⁺ , CD103 ⁺ , CD69 ⁺ , CD49a ⁺ , PD-1 ⁺ , LAG-3 ⁺ , Gzmb ⁺	High levels of CD49a expression are associated with improved DFS and OS.	Murray et al., 2016 ; Edwards et al., 2018 ; Menaes et al., 2019
		Increased numbers of CD69 ⁺ CD103 ⁺ CD8 ⁺ cells are associated with improved OS in immunotherapy-naïve patients.	
		Enrichment of T _{RM} gene signature is associated with improved OS.	
Ovarian cancer	CD8 ⁺ , CD103 ⁺ , PD-1 ⁺ , CD3 ⁺	Presence of CD103 ⁺ cells is associated with increased DSS in HGSOE and mucinous cancers.	Webb et al., 2014
		Patients with HGSOE, containing both CD103 ⁺ and PD-1 ⁺ cells, are associated with increased DSS.	Webb et al., 2015

Table 1. Clinical relevance of T_{RM} in patients with cancer (Continued)

Cancer types	T_{RM} phenotype	Correlation with clinical features	References
		CD103 ⁺ cell numbers are associated with improved DSS in patients treated with PS.	Bösmüller et al., 2016
		High infiltration of CD103 ⁺ cells in tumor parenchyma of primary tumors is associated with improved 10-yr OS.	Komdeur et al., 2016
			Santoemma et al., 2016
Pancreatic cancer	CD8 ⁺ , CD103 ⁺	Increased ratio of CD8 ⁺ CD103 ⁺ cells to CD8 ⁺ CD103 ⁻ cells is associated with improved DFS.	Lohneis et al., 2017

DFS, disease-free survival; DSS, disease-specific survival; HGSOc, high-grade serous ovarian cancer; OS, overall survival; PS, primary surgery and adjuvant chemotherapy; RFS, relapse-free survival; TIGIT, T cell immunoreceptor with immunoglobulin and ITIM domains; TNBC, triple-negative breast cancer.

infection models and human studies and how these findings have been used to guide studies of T_{RM} in tumor immunity, as well as implications for the role of T_{RM} in immune surveillance and immunotherapies.

Identifying T_{RM}

T_{RM} are defined based on the expression of specific markers, a distinct transcriptional profile, and their functional retention in tissues, all properties that distinguish T_{RM} from circulating memory T cells, including effector memory T cells (T_{EM}) and central memory T cells (T_{CM}). Based on this definition, CD8⁺ T_{RM} are found to be a component of tumor-infiltrating lymphocytes (TILs) in patients with solid tumors (Byrne et al., 2020). However, it is important to note that T_{RM} are loosely defined in different studies in the context of tumor immunity.

T_{RM} express tissue retention markers, including CD69 (C-type lectin), $\alpha E(CD103)\beta 7$ (E-cadherin receptor), and $\alpha 1(CD49a)\beta 1$ (VLA-1), and exhibit reduced expression of migration and tissue egress markers, such as CCR7, CD62L, and sphingosine-1-phosphate receptor 1 (S1PR1; Schenkel and Masopust, 2014; Kumar et al., 2017; Szabo et al., 2019). Other core markers identified in both human and mouse T_{RM} include the chemokine receptor CXCR6, the inhibitory receptor programmed death receptor 1 (PD-1), and CD101, which have inhibitory function (Mackay et al., 2016; Kumar et al., 2017; Wein et al., 2019). The expression of T_{RM} -associated markers differs between organs and tissue sites. CD103 is most highly expressed by CD8⁺ T_{RM} in mucosal and barrier sites, is variably expressed by T_{RM} in lung and skin, and is not expressed by T_{RM} in lymphoid sites (Kumar et al., 2017; Steinert et al., 2015). PD-1 is highly expressed by human T_{RM} in exocrine sites, such as the pancreas, and to a lesser extent by lymphoid T_{RM} , but is not highly expressed by intestinal T_{RM} (Weisberg et al., 2019). In human tumors, T_{RM} phenotype can also vary according to the tumor type (Table 1). Interestingly, human T_{RM} associated with multiple tumor types in different sites express CD103, possibly due to the epithelial origin of many solid tumors, while lung tumor-associated T_{RM} also express CXCR6 mRNA (Ganesan et al., 2017). PD-1 is expressed by T_{RM} in tumor tissues and healthy tissues. Tumor-associated myeloid APCs, including macrophages and myeloid dendritic cells (DCs), highly express programmed death-ligand 1 (PD-L1; B7-H1), engage

PD-1⁺ T cells, and mediate immune suppression in spontaneous and immunotherapy-induced tumor immunity (Curiel et al., 2004; Zou et al., 2016; Lin et al., 2018). It is unknown if PD-L1⁺ APCs interact with PD-1⁺ T_{RM} , resulting in T_{RM} functional alteration in the tumor-draining LNs and tumor microenvironment. Additionally, whether tumor-associated T_{RM} in a particular tissue site differ phenotypically from T_{RM} in the identical healthy tissue site requires further investigation.

Transcriptome profiling of the population and single-cell RNA sequencing (scRNAseq) have elucidated core features of T_{RM} in mouse models and humans and further revealed T_{RM} heterogeneity and tissue-specific signatures. Population-level RNAseq of mouse and human T_{RM} has revealed conserved signatures that include genes encoding the surface and intracellular molecules described above, as well as transcriptional regulators (Mackay et al., 2016; Kumar et al., 2016; Hombrink et al., 2016). In mice, the transcription factors (such as Hobit, Blimp-1, Runx3, and Id2 family members) have been reported to play a role in T_{RM} biology (Mackay et al., 2016; Milner et al., 2017; Milner et al., 2020). Human T_{RM} do not express elevated levels of Hobit, although Notch expression is up-regulated and is related to T_{RM} establishment (Hombrink et al., 2016; Kumar et al., 2017). A “master regulator” defining human T_{RM} development has not yet been identified. However, single-cell transcriptome profiling of T_{RM} has begun to reveal new insights into distinguished features of T_{RM} , including their heterogeneity and tissue-specific variations. In humans, scRNAseq analysis of T cells from lung and lymphoid sites has revealed a T_{RM} -associated tissue gene signature, including cell-cell communication, cell structure, and cell-cell matrix interactions (Szabo et al., 2019). This suggests that cell structure and cell interaction may regulate T_{RM} formation and maintenance. Transcriptome analysis has also indicated considerable heterogeneity among mouse T_{RM} populations (Milner et al., 2020).

Transcriptome analysis has likewise identified tumor-associated T_{RM} subsets in the tumor microenvironment. For example, single-cell sequencing suggests different T_{RM} subsets in human breast cancer (Savas et al., 2018). Interestingly, PD-1-expressing T_{RM} may possess superior functionality when compared with PD-1-expressing non- T_{RM} , as suggested in transcriptome profiling of human lung cancer (Clarke et al., 2019). Based on our current understanding of PD-L1 and PD-1 in

tumor immunity (Curiel et al., 2004; Zou et al., 2016; Lin et al., 2018), this finding is unexpected. Transcriptionally distinct subsets of T_{RM} , including $Blimp1^{hi}$ and $Id3^{hi}$ subpopulations, were also identified in a mouse melanoma model (Fig. 1; Milner et al., 2020). Although transcriptome studies have generated some insight into T_{RM} in tumors, it is important and critical to phenotypically and functionally define the different subsets of tumor-associated T_{RM} , including $PD-1^+$ T_{RM} . Notably, although tumor-infiltrating lymphocytes show a T_{RM} -like signature, there are no specific phenotypic and functional markers to define T_{RM} among different memory T cell subsets in the tumor microenvironment (Sasson et al., 2020). Thus, functional studies following single-cell phenotyping are critical to resolve discrepancies regarding different tumor-infiltrating T cell subsets, including T_{RM} .

T_{RM} retention

T_{RM} were originally identified in mice using parabiosis models and in vivo antibody labeling (Anderson et al., 2014; Szabo et al., 2019). Multiple molecules (including CD44, CD69, integrins [CD49a, CD103]), some transcription factors (i.e., Notch, Runx3, Blimp1, Hobit), fatty acid-binding proteins (FABPs), and microbiome-derived metabolites (such as short-chain fatty acid [SCFA]) are reported to be involved in T_{RM} retention in the tissue. CD44 is a receptor for extracellular matrix and assists T_{RM} interaction with epithelial cells and collagen (Amsen et al., 2018). CD69 restrains the function of S1PR1 signaling and blocks T_{RM} egress from tissue (Skon et al., 2013; Mackay et al., 2015). Similarly, CD49a and CD103 function as “anchors” to arrest T_{RM} within the tissues (Chen and Shen, 2020; Byrne et al., 2020).

The pathways controlling T_{RM} retention in tumors are poorly defined. Different levels of $CD8^+CD103^+$ T_{RM} are found in tumor epithelium and tumor stroma in different tumor types in patients (Cresswell et al., 2001; Ling et al., 2007; Djenidi et al., 2015; Wang et al., 2015; Workel et al., 2016; Nizard et al., 2017), suggesting that CD103 may be particularly important for T_{RM} retention in tumors. Antibody blockade of CD103 or genetic deficiency of CD103 results in reduced tumor-infiltrating T cells and accelerated tumor progression in mice (Sandoval et al., 2013; Murray et al., 2016; Sun et al., 2016; Malik et al., 2017), supporting a role for CD103 in T cell tumor retention. Notch plays a role in controlling maximal CD103 expression in tumor-associated T_{RM} (Hombrink et al., 2016). Transcription factors, including Runx3, Blimp, Hobit, and KLF2, have been shown to down-regulate homing receptor expression for egress in T_{RM} and promote T_{RM} tissue retention in mouse infection models (Milner et al., 2017; Mackay et al., 2016; Skon et al., 2013). The potential role of these transcription factors in T_{RM} tumor retention remains to be established.

It appears that T_{RM} retention is subject to their adaptation to and regulation by their tissue of residency. Consistent with this concept, tissue-tailored, variable, and malleable profiles of FABP isoforms are found in murine T_{RM} after viral infection (Frizzell et al., 2020). Interestingly, microbiota-derived SCFA favors $CD8^+$ T cell long-term survival and memory (Bachem et al., 2019). Altogether, these early studies suggest that it is crucial to decode molecular mechanisms by which T_{RM} gain tissue-

tailored “labels” and to characterize the “area code” to control T_{RM} memory, survival, and function in the tumor microenvironment in different tumor types.

Generation and maintenance of T_{RM}

Several models (including linear, asymmetrical, self-renewal, simultaneous, “one cell, one fate,” and “one cell, multiple fates” programs) are proposed to explain T_{RM} differentiation (Enamorado et al., 2018; Raphael et al., 2020). Moreover, T_{RM} differentiation is influenced by different factors at the earliest priming stage in the LN, the cytokine environment during differentiation and activation, and finally through tissue-specific influences. At the level of priming, murine $Batf3$ -dependent DCs and human $CD1c^+/CD163^+$ TGF- β -producing DCs can prime T cells for T_{RM} generation in lymphoid tissues (Mami-Chouaib et al., 2018; Amsen et al., 2018; Bourdely et al., 2020). DC-specific DNGR-1 (CLEC9A) provides optimal signal for murine T_{RM} generation (Iborra et al., 2016). Even before antigen encounter, naive T cells can undergo “training” in the LNs via interacting with migratory $\alpha V\beta 8^+$ DCs. These DCs activate and present TGF- β to naive $CD8^+$ T cells, resulting in T_{RM} -like features, including up-regulation of CD103 expression and epigenetic modifications of T_{RM} -related genes (Mani et al., 2019). It is speculated that DCs in the tumor-draining LNs may similarly affect T_{RM} development in the tumor microenvironment.

T_{RM} undergo a unique, hybrid effector cell-memory cell differentiation program driven by transcription factors associated with both memory and effector cell characteristics. For example, Blimp1 and Notch are required for T_{RM} and favor T_{EM} , whereas Runx3 and Nr4a1 promote T_{RM} and support T_{CM} (Milner and Goldrath, 2018). Conversely, T-bet and Eomes inhibit T_{RM} formation but promote T_{EM} and T_{CM} differentiation, respectively. Furthermore, T_{RM} seem to be reminiscent effector cells via expression of PD-1, IFN γ , perforin, and granzyme B (GzmB) on both mRNA and protein levels (Szabo et al., 2019; Milner and Goldrath, 2018; Ganesan et al., 2017), and they share properties of stem cells, as they may be long-lived and not terminally differentiated (Milner and Goldrath, 2018). Overall, coexistence of these memory-, effector-, and stem-like properties may reinforce the antitumor functionality of T_{RM} .

Cytokines at the tissue site or during priming can influence T_{RM} formation

Notably, TGF- β promotes CD103 expression and is critical for formation of T_{RM} in the gut, skin, and lungs (Zhang and Bevan, 2013; Raphael et al., 2020). TGF- β can be highly expressed in the tumor microenvironment and may promote T_{RM} establishment. Tissue-specific factors are also important for T_{RM} establishment at specific sites. The cutaneous lymphocyte antigen and chemokine receptors, including CCR4, CCR8, CCR10, and CCR19, are expressed on T_{RM} resident in the skin, whereas CCR9, CXCR3, and integrin $\alpha_4\beta_7$ are revealed in intestinal-resident T_{RM} (Farber et al., 2014; Amsen et al., 2018; Sun et al., 2019). Murine T_{RM} in the kidney have enhanced expression of E-selectin and P-selectin (Ma et al., 2017). CXCR6 controls T_{RM} trafficking to murine lungs (Wein et al., 2019) and is expressed in T_{RM} in human lung cancer (Ganesan et al., 2017), while murine T_{RM}

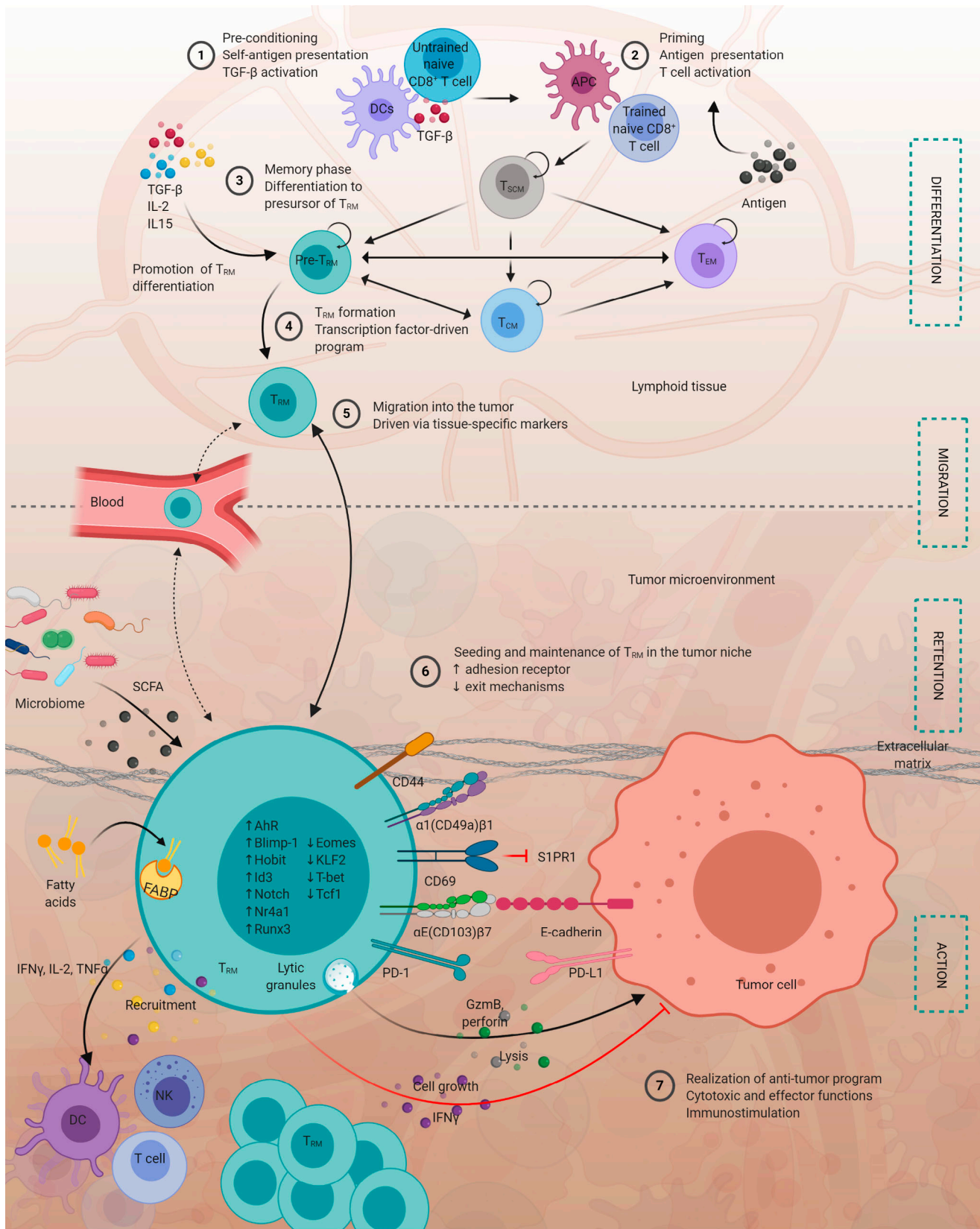


Figure 1. **T_{RM} in tumor immunity.** (1 and 2) Before specific antigen priming, CD8⁺ naive T cells may interact with DCs in the presence of TGF-β. This process may prepare T_{RM} formation. (3) During memory phase, T_{SCM} may give rise to different memory subsets, including T_{RM}. IL-2, IL-15, and TGF-β, which may provide optimal signaling for T_{RM} formation. (4) T_{RM} precursors may undergo a transcription factor–driven generation program. (5) T_{RM} can traffic into the tumor microenvironment, and they are maintained in situ without (or with minimal) recirculation. (6) T_{RM} retention in tumors may be related to certain

integrins, including CD44, $\alpha 1(\text{CD49a})\beta 1$, $\alpha \text{E}(\text{CD103})\beta 7$, and CD69. CD44 and $\alpha 1(\text{CD49a})\beta 1$ tether T_{RM} to the extracellular matrix. $\alpha \text{E}(\text{CD103})\beta 7$ anchors T_{RM} via interacting with E-cadherin on the epithelial cell surface. CD69 blocks S1PR1-mediated “exit” signaling. Blockade of T_{RM} egress from the tissue may be promoted by up-regulation of some transcription factors (including Blimp, Hobit, Notch, and Runx) and by down-regulation of Krüppel-like factor 2 (KLF2). Microbiome-derived SCFA may promote long-term maintenance of T_{RM} . FABP and FFA uptake may favor T_{RM} survival and antitumor functionality. T_{RM} may express immune checkpoint proteins, suggesting that T_{RM} likely responds to checkpoint blockade. (7) T_{RM} may release perforin and GzmB and directly kill target tumor cells. T_{RM} -derived cytokines (IFN- γ , IL-2, and TNF- α) promote infiltration of DCs, T and B cells, and natural killer cells, indirectly boosting antitumor immunity.

migrate to the brain via CCR5 and CXCL10 (Glass et al., 2005; Klein et al., 2005). However, $\alpha 4\beta 7^+$ T_{RM} are also present in the murine skin (Ohmatsu et al., 2010). CXCR3 can “navigate” T_{RM} to the lungs, skin, and vagina, whereas P-selectin plays a role in migration of CD4^+ T_{RM} to the intestine (Haddad et al., 2003; Jeyanathan et al., 2017; Chen and Shen, 2020). Future studies are required to precisely characterize T_{RM} -related functional states in different tumors.

Once established in the tissues, there is evidence that T_{RM} can be maintained for a long period of time. Mouse studies in a parabiosis model show that CD4^+ and CD8^+ T_{RM} generated from site-specific infection do not emerge into the circulation and enter peripheral organs during homeostasis for several weeks (Teijaro et al., 2011; Jiang et al., 2012; Steinert et al., 2015). Additionally, T_{RM} are identified from intravenous antibody labeling due to their presence in tissues, not in the vasculature (Anderson et al., 2012; Turner et al., 2014). In humans, long-term persistence of CD4^+ and CD8^+ T_{RM} has been demonstrated in transplanted organs in which donor T_{RM} in lungs and intestines were maintained for over a year after transplant but were not detected in blood (Snyder et al., 2019; Bartolomé-Casado et al., 2019; Bartolomé-Casado et al., 2020; Pallett et al., 2020). Moreover, T_{RM} frequencies in multiple mucosal barriers and lymphoid sites are stably maintained throughout decades of adult life (Kumar et al., 2018). Together, these findings suggest that T_{RM} maintenance is tissue specific and integral for tissue homeostasis.

Studies in mice suggest that T_{RM} persistence and stability in tissues can be variable

Lung CD8^+ T_{RM} generated after infection tend to wane over time, unless persistent antigen stimulation is provided (Uddbäck et al., 2021). Over time, lung T_{RM} were also found to migrate out of the lung to the associated lymphoid tissue (Stolley et al., 2020). Recent studies have found low levels of potential T_{RM} in healthy human peripheral blood (Klicznik et al., 2019; Guggino et al., 2019) and in the synovial fluid of individuals with spondyloarthritis (Guggino et al., 2019; Qaiyum et al., 2019). In line with this, scRNAseq analysis identifies a tissue gene signature in a minor fraction of peripheral blood T cells (Szabo et al., 2019). Thus, it seems that T_{RM} emergence into the circulation may occur, but it may be a rare event. In mice, reactivation of T_{RM} in secondary infection can result in migration of effector progeny to the local draining LNs (Fonseca et al., 2020; Stolley et al., 2020). Adoptive transfer of purified mouse T_{RM} can enable T_{RM} to migrate to and populate different tissue sites in response to systemic virus challenge (Fonseca et al., 2020). While these results suggest T_{RM} plasticity for reactivation, further studies are needed to investigate the trafficking and

retention properties of T_{RM} in different sites; this is an important research area in T_{RM} biology.

Tumor-infiltrating T cells have been studied before the identification of T_{RM}

Tumor-associated T_{RM} may consist of T_{RM} already in the original tissue site before tumorigenesis and T cells that migrate from the periphery, which become T_{RM} due to certain tumor environmental factors such as TGF- β (Fig. 1). Based on results in murine infection models, we propose that tumor-specific T_{RM} reside primarily in the tumor milieu, where they may locally proliferate in response to antigen encounter in situ without or with minimal exiting from the tumor site. This concept is in agreement with the data that tumor-associated antigen-specific T cells are largely found in tumor tissue rather than in the circulation (Webb et al., 2014; Smazynski and Webb, 2018). Recall immune responses could be initiated at nonlymphoid tissues, such as tumor tissues (Zou, 2005). If so, tumor-infiltrating T_{RM} may be locally activated to proliferate and combat tumor cells in the tumor microenvironment. Subsequently, they may exit the primary tumor niche and inhabit new sites within the tissue of origin—for instance, metastatic tumor tissues. Given that the majority of cancer patients die from tumor metastases, boosting T_{RM} -mediated long-term local and systemic memory would be meaningful. Nonetheless, the potential mechanisms controlling tumor-associated T_{RM} maintenance, replenishment, and function remain to be dissected.

Role of T_{RM} in tumor immune surveillance and immunity

Due to their long-term retention in multiple tissues, T_{RM} can play an important role in both tumor immune surveillance and immunity at diverse sites, analogous to their role in immune protection to pathogens (Amsen et al., 2018; Gebhardt et al., 2018; Byrne et al., 2020). Recent studies in mice have pointed toward the functional importance of T_{RM} in immune responses (Park et al., 2018; Beura et al., 2018a; Klicznik et al., 2019; Fonseca et al., 2020). One intriguing possibility is that T_{RM} may eliminate transformed cells in situ, thereby preventing tumor initiation. However, once a tumor is established, tumor cells outcompete tumor-infiltrating T cells for nutrients, resulting in impaired T cell functionality (Zhang et al., 2017; Bian et al., 2020). Correspondingly, human gastric cancer cells outcompete T_{RM} for lipid uptake, resulting in T_{RM} death (Lin et al., 2020). The data suggest that fatty acids may be required for T_{RM} survival in the tumor niche.

T_{RM} mediate antitumor immunity directly through production of effector and cytolytic mediators and through the release of cytokines and chemokines for immune cell recruitment and activation. CD8^+ T_{RM} can be reactivated by both hematopoietic

and nonhematopoietic APCs within the sites, which can shape their functionality (Low et al., 2020). Once stimulated, T_{RM} release lytic granules containing perforin and GzmB and kill tumor cells, similarly to effector $CD8^+$ T cells (Amsen et al., 2018). Furthermore, T_{RM} can support immune equilibrium in a melanoma mouse model and contribute to tumor control (Park et al., 2019a).

Interestingly, tumor-infiltrating $CD8^+CD39^+CD103^+$ T_{RM} elicit more potent cytotoxic and effector functions compared with $CD103^-$ counterparts (Franciszewicz et al., 2013; Djenidi et al., 2015; Enamorado et al., 2017; Malik et al., 2017; Nizard et al., 2017; Duhon et al., 2018; Park et al., 2019; Sasson et al., 2020). In line with this, $CD8^+CD103^+$ T_{RM} in tumor, but not in tumor stroma, are a better prognostic factor in patients with cancer (Koh et al., 2017; Dhodapkar, 2018). Human tumor-infiltrating T helper type 17 (Th17) cells are affected by TGF β in the tumor microenvironment, express CD49, are long-lived memory cells, and mediate potent antitumor immunity (Kryczek et al., 2009; Kryczek et al., 2011). These features suggest that human tumor-infiltrating Th17 cells exhibit and/or gain a T_{RM} phenotype. Correspondingly, $CD4^+$ T_{RM} with a Th17 signature have been observed in patients with autoimmune disease (Krebs et al., 2020). Interestingly, $CD49a^+$ T_{RM} are the most effective tumor killers among T cells in a melanoma mouse model (Le Floch et al., 2007; Djenidi et al., 2015; Murray et al., 2016). It is tempting to speculate that T_{RM} may possess superior antitumor activity compared with other tumor-associated lymphocytes.

In addition to tumor killing via their direct cytotoxic activity, T_{RM} function as an immune stimulator. T_{RM} -derived effector cytokines stimulate local DCs, natural killer cells, and T cells to boost antitumor immune responses (Schenkel et al., 2013; McMaster et al., 2015; Hombrink et al., 2016; Glasner et al., 2018). Furthermore, T_{RM} more rapidly respond to antigen re-exposure compared with circulating memory T cells (Mackay et al., 2012; Schenkel et al., 2014; Ariotti et al., 2014). Therefore, T_{RM} may play a crucial role against tumor recurrence. Collectively, activated T_{RM} initiate a system of a rapid, tissue-wide state of alarm for optimal immune protection. Unexpectedly, although T_{RM} express inhibitory checkpoint receptors, their cytotoxic and effector functionalities are maintained (Ganesan et al., 2017; Savas et al., 2018; Boddupalli et al., 2016). Treatment with PD-1 and PD-L1 blockade results in T_{RM} proliferation in patients with melanoma (Edwards et al., 2018), and production of high levels of GzmB, TNF- α , and IFN- γ (Djenidi et al., 2015; Ganesan et al., 2017; Behr et al., 2019). However, it has also been reported that T_{RM} isolated from normal human lung tissue may be more effective in effector cytokine production than their counterparts isolated from tumor lung tissue (Bengsch et al., 2018). A tolerogenic signature has been observed in $CD8^+CD103^+$ T cells with high expression of IL-10 and CTLA-4 and low expression of TNF- α , IFN- γ , and GzmB in a melanoma mouse model (Gabriely et al., 2017). Nevertheless, T_{RM} are associated with favorable prognosis in many types of human cancer (Table 1). Intriguingly, mouse infection models have recently shown that lung T_{RM} can migrate to the draining LNs (Beura et al., 2018b) and that stimulation of lung T_{RM} led to enhanced responses in the lung-draining LNs (Paik and Farber,

2021). These studies suggest that T_{RM} may coordinate local immunity through fortification of the immune response in the neighboring LNs. If T_{RM} existed in the tumor-draining LNs, T_{RM} would be an ideal cell population to inhibit tumor lymphatic spread and metastases. Collectively, all of the above multifunctional T_{RM} activities make them ideal effector T cells in antitumor immune responses.

T_{RM} in tumor immunotherapy

There is evidence that T_{RM} are involved in tumor immunotherapy. Checkpoint therapy boosts T_{RM} formation in melanoma-bearing mice (Enamorado et al., 2017). PD-1 blockade in combination with T_{CM} transfer results in 10-fold increase in T_{RM} and inhibits B16 and MC38 tumor growth (Enamorado et al., 2017). Consistent with mouse studies, PD-1 blockade of T_{RM} from human non-small cell lung cancer promotes ex vivo cytotoxicity of T_{RM} to autologous tumors (Djenidi et al., 2015). Anti-PD-1 therapy leads to potent proliferation of $CD8^+CD103^+$ T_{RM} in patients with melanoma, and the levels of $CD8^+CD103^+$ T_{RM} are associated with improved patient survival (Edwards et al., 2018). Therefore, checkpoint blockade supports the notion that targeting T_{RM} may be therapeutically meaningful. Multiple strategies have been suggested to modulate T_{RM} to enhance cancer therapy efficacy (Fig. 2 and Table 2).

Targeting T_{RM} priming, differentiation, and survival

DC priming is essential for T_{RM} formation in different models, including tumors (Yu et al., 2013; Wu et al., 2014; Iborra et al., 2016; Shin et al., 2016; Enamorado et al., 2017). $CD103^+$ DCs are required for optimal generation of T_{RM} (Iborra et al., 2016). Both $CD1c^+$ DCs (Yu et al., 2013) and $CD301b^+$ DCs (Shin et al., 2016) promote T_{RM} generation from effector $CD8^+$ T cells. Given the importance of DCs in T_{RM} formation, DCs may be used as a vaccine to induce T_{RM} . Furthermore, IL-15 promotes $CD8^+$ T_{RM} in situ (Sowell et al., 2017). Cytokine nanogel allows transference of high doses of IL-15 to the tumor microenvironment (Tang et al., 2018; Xie et al., 2019) and enhancement of the T_{RM} pool in the tumor. Interestingly, Bhlhe40 (a transcription factor) orchestrates T_{RM} survival and functionality and is critical for immunotherapy efficacy (Li et al., 2019). Thus, targeting Bhlhe40 may be an option for cancer immunotherapy. In addition, TGF- β supports T_{RM} formation (Zhang and Bevan, 2013) and promotes radiation resistance of T_{RM} (Arina et al., 2019). Blockade of TGF- β results in reduced numbers of T_{RM} after vaccination (Nizard et al., 2017). Given the general immunosuppressive role of TGF- β , it is challenging to specifically target TGF- β -signaling in T_{RM} to improve cancer therapy. Future studies will determine whether critical and specific potential TGF- β downstream gene(s) for T_{RM} formation can be identified.

Adoptive T_{RM} transfusion

Adoptive transfusion of preprogrammed T_{RM} may be a cancer immunotherapy strategy. Adoptive transfer of tumor-infiltrating T cells with overexpression of Runx3 promotes T_{RM} development, inhibits tumor growth, and improves mouse survival in a melanoma murine model (Milner et al., 2017). T memory stem cells (T_{SCM}) differentiate into T_{RM} (Kondo et al.,

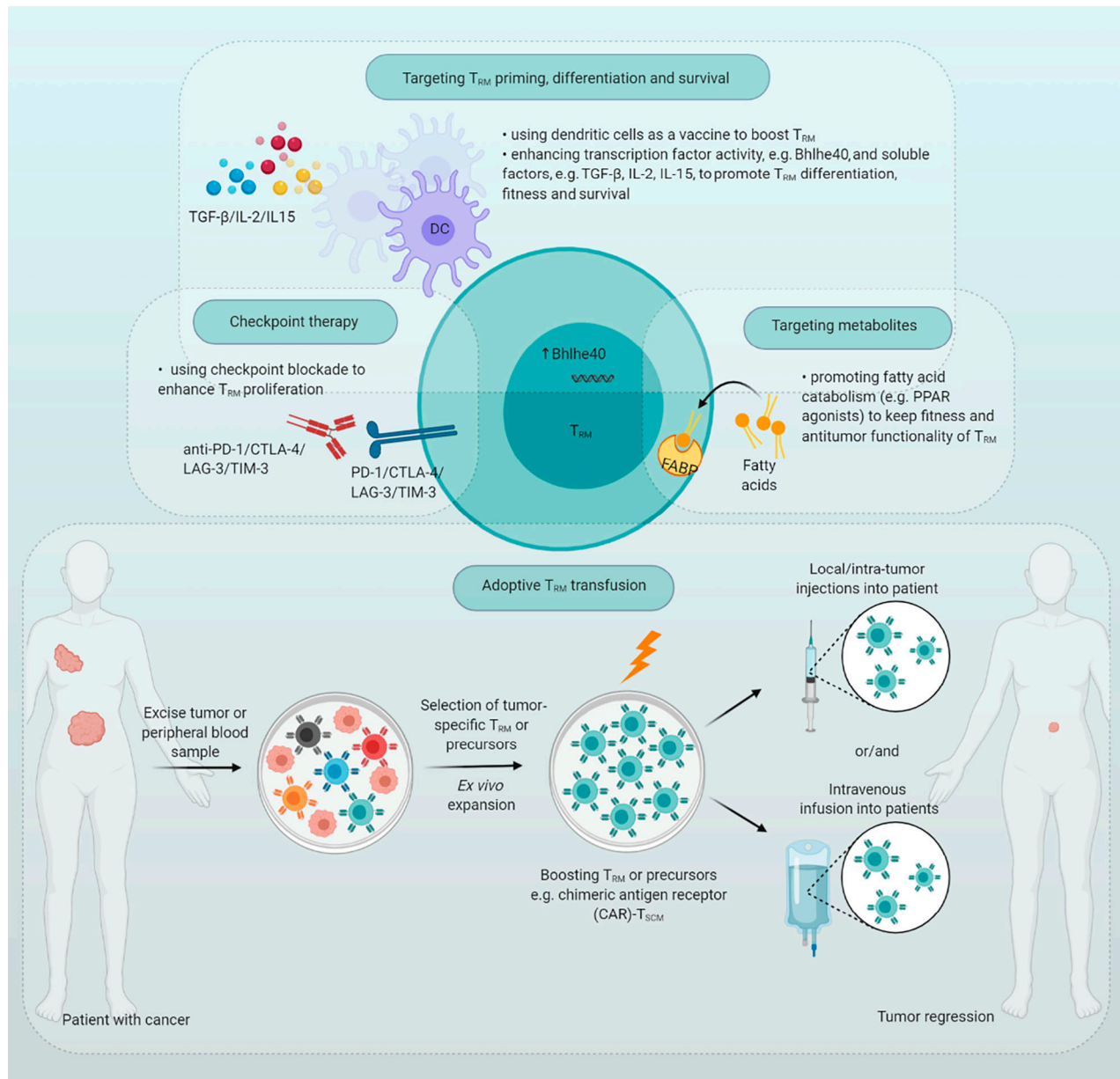


Figure 2. **T_{RM} in cancer immunotherapy.** Several strategies have been proposed to enhance T_{RM} activity. Checkpoint blockade may enhance intratumoral proliferation of T_{RM}. DCs may be used as a vaccine to induce functional T_{RM}. Targeting specific transcription factors and cytokines may drive T_{RM} formation and may boost induction of active T_{RM}. Targeting particular metabolites (e.g., FFA and FABP) may promote T_{RM} pool and antitumor activity. Adoptive transfer of preprogrammed T_{RM} or T_{SCM} may improve T_{RM} seeding or differentiation, thereby enhancing antitumor immunity. PPAR, peroxisome proliferator-activated receptor.

2017). Adoptive transfusion of T_{SCM} and chimeric antigen receptor T_{SCM} (Kondo et al., 2020) may lead to increased T_{RM} in cancers. Furthermore, in murine models of melanoma, the presence of both T_{RM} and circulating T cells offers improved protection against tumor challenge compared with only one alone (Enamorado et al., 2017). Thus, adoptive T_{RM} transfusion may be a reasonable approach in combination with other cancer therapies.

Targeting metabolites

T cells compete with tumor cells for glucose, amino acids, and free fatty acids (FFAs; Zhao et al., 2016; Molodtsov and Turk,

2018; Chen and Huang, 2019; Bian et al., 2020, Wang and Zou, 2020). T_{RM} express high levels of FFA-binding proteins FABP4 and FABP5 (Pan et al., 2017; Lin et al., 2020). Peroxisome proliferator-activated receptor agonists promote FFA catabolism, accelerate T cell-mediated antitumor immunity, and sensitize anti-PD-1 treatment (Zhang et al., 2017; Chowdhury et al., 2018). The antitumor effect may be partially attributed to T_{RM} responses. Checkpoint blockade promotes FABP4 and FABP5 expression in T_{RM}, resulting in higher lipid uptake by T_{RM} and enhancing T_{RM} survival (Lin et al., 2020). As such, targeting FFA and FABP can affect T_{RM} and improve antitumor

Table 2. **Role of T_{RM} in cancer immunotherapy**

Tumor types	Treatment strategy	Effects	References
Cervical cancer	Vaccination + radiotherapy	HPV E6/E7-targeted therapeutic vaccination in combination with radiotherapy results in increased intratumoral number of CD8 ⁺ CD103 ⁺ cells.	Komdeur et al., 2017
Colorectal cancer	Anti-TGF-β mAb + radiotherapy	TGF-β contributes to T _{RM} radioresistance.	Arina et al., 2019
Esophageal cancer	Anti-PD-L1 mAb	PD-L1 blockade increases the number of CD8 ⁺ CD103 ⁺ cells in the tumor.	Han et al., 2020
Gastric cancer	Anti-PD-L1 mAb	PD-L1 blockade increases FABP4 and 5 expression in T _{RM} , favoring lipid uptake by T _{RM} and resulting in improved cell survival. PD-L1 blockade unleashes T _{RM} in the PDX mice. Non-responder PDX mice to PD-L1 blockade have less T _{RM} than responders.	Lin et al., 2020
Head and neck cancer	Vaccination, anti-TGF-β mAb	STxB-E7 vaccination induces T _{RM} and inhibits tumor growth. TGF-β blockade inhibits T _{RM} formation after vaccine immunization, resulting in lower vaccine efficacy.	Nizard et al., 2017
Melanoma	"Prime-boost" immunization (CpG ODN 1826, OVA)	Subcutaneous antigen injection and epicutaneous CpG ODN adjuvant administration correlate with enhanced numbers of CD103 ⁺ CD8 ⁺ cells in the skin, enhance T _{CIRC} in the blood, and prevent tumor development.	Lai et al., 2019
	Vaccination (pVAX-OVA/DNA-OVA and pcDNA-GP100/DNA-GP100)	Vaccination-induced T _{RM} strongly suppress the growth of melanoma cells independently of T _{CIRC} .	Gálvez-Cancino et al., 2018
	Anti-PD-1 mAb (nivolumab, pembrolizumab)	CD103 ⁺ cells significantly expand early during treatment.	Edwards et al., 2018
	Adoptive T cell transfer	Runx3-deficient CD8 ⁺ cells fail to infiltrate the tumor, resulting in higher tumor growth and mortality. Runx3 overexpression enhances CD8 ⁺ cell tumor infiltration, inhibits tumor growth, and prolongs OS.	Milner et al., 2017
	T reg depletion and tumor removal	Skin-resident T _{RM} are necessary for rejection of tumor rechallenge and long-lived melanoma immune protection.	Malik et al., 2017
	Adoptive T cell transfer, anti-PD-1 mAb	Anti-PD-1 boosts T _{RM} tumor infiltration and improves antitumor immunity after T _{CM} transfer.	Enamorado et al., 2017
	Anti-CD103, anti-VLA-1 mAb	Blockade of CD103 or VLA-1 on T _{RM} impairs tumor control.	Murray et al., 2016
	Adoptive T cell transfer, anti-CD103 mAb	Transfer of CD8 ⁺ CD103 ⁺ cells enhances tumor growth, whereas CD103 blockade inhibits tumorigenesis.	Gabriely et al., 2017

HPV, human papillomavirus; ODN, oligodeoxynucleotide; OS, overall survival; PDX, patient-derived xenograft; STxB, B subunit of Shiga toxin; T_{CIRC}, circulating memory T cells; VLA-1, very late antigen 1.

immunity. Future studies will generate insight into T_{RM} metabolic features and how to target T_{RM} metabolism for cancer therapy.

Conclusions

Current evidence shows that T_{RM} can evoke potent antitumor immune responses. However, our understanding of their phenotype, differentiation, trafficking, tissue retention, and effector function remains in its infancy. This is particularly the case in patients with cancer. Substantial human studies rely on expression of CD49, CD69, and CD103 to define T_{RM}. A number of mouse tumor-bearing models and human samples have revealed the presence of T_{RM} phenotype cells within tumors. These T_{RM} may arise de novo from the tissue or infiltrate as part of the antitumor immunosurveillance. Evidence thus far shows that T_{RM} presence in a tumor or in response to immunotherapy can be a useful prognostic indicator for improved outcomes. Using

high-throughput technologies, including single-cell sequencing, microscopic tissue spatial analysis, and multi-omics studies, we may be able to fruitfully study limited clinical materials to gain critical and novel information on T_{RM}, leading to developing new cancer treatments via targeting T_{RM}.

Acknowledgments

This work was supported in part by research grants from the National Cancer Institute of the National Institutes of Health (CA248430, CA217648, CA123088, CA099985, CA193136, and CA152470 to W. Zou), the National Institutes of Health through a University of Michigan Rogel Cancer Center support grant (P30CA46592), and other National Institutes of Health grants (AI106697, AI128949, HL145547, and AI150680 to D.L. Farber). K. Okla was supported in part by the ETIUDA 7 Research Scholarship of the National Science Center in Poland.

Author contributions: Conceptualization, writing, review, and editing: K. Okta, D.L. Farber, and W. Zou.

Disclosures: The authors declare no competing interests exist.

Submitted: 11 September 2020

Revised: 17 November 2020

Accepted: 3 December 2020

References

- Amsen, D., K.P.J.M. van Gisbergen, P. Hombrink, and R.A.W. van Lier. 2018. Tissue-resident memory T cells at the center of immunity to solid tumors. *Nat. Immunol.* 19:538–546. <https://doi.org/10.1038/s41590-018-0114-2>
- Anderson, K.G., H. Sung, C.N. Skon, L. Lefrancois, A. Deisinger, V. Vezys, and D. Masopust. 2012. Cutting edge: intravascular staining redefines lung CD8 T cell responses. *J. Immunol.* 189:2702–2706. <https://doi.org/10.4049/jimmunol.1201682>
- Anderson, K.G., K. Mayer-Barber, H. Sung, L. Beura, B.R. James, J.J. Taylor, L. Qunaj, T.S. Griffith, V. Vezys, D.L. Barber, and D. Masopust. 2014. Intravascular staining for discrimination of vascular and tissue leukocytes. *Nat. Protoc.* 9:209–222. <https://doi.org/10.1038/nprot.2014.005>
- Arina, A., M. Beckett, C. Fernandez, W. Zheng, S. Pitroda, S.J. Chmura, J.J. Luke, M. Forde, Y. Hou, B. Burnette, et al. 2019. Tumor-reprogrammed resident T cells resist radiation to control tumors. *Nat. Commun.* 10:3959. <https://doi.org/10.1038/s41467-019-11906-2>
- Ariotti, S., M.A. Hogenbirk, F.E. Dijkgraaf, L.L. Visser, M.E. Hoekstra, J.-Y. Song, H. Jacobs, J.B. Haanen, and T.N. Schumacher. 2014. T cell memory. Skin-resident memory CD8⁺ T cells trigger a state of tissue-wide pathogen alert. *Science*. 346:101–105. <https://doi.org/10.1126/science.1254803>
- Bachem, A., C. Makhlof, K.J. Binger, D.P. de Souza, D. Tull, K. Hochheiser, P.G. Whitney, D. Fernandez-Ruiz, S. Dähling, W. Kastenmüller, et al. 2019. Microbiota-derived short-chain fatty acids promote the memory potential of antigen-activated CD8⁺ T cells. *Immunity*. 51:285–297.e5. <https://doi.org/10.1016/j.immuni.2019.06.002>
- Bartolomé-Casado, R., O.J.B. Landsverk, S.K. Chauhan, L. Richter, D. Phung, V. Greiff, L.F. Risnes, Y. Yao, R.S. Neumann, S. Yaqub, et al. 2019. Resident memory CD8 T cells persist for years in human small intestine. *J. Exp. Med.* 216:2412–2426. <https://doi.org/10.1084/jem.20190414>
- Bartolomé-Casado, R., O.J.B. Landsverk, S.K. Chauhan, F. Sætre, K.T. Hagen, S. Yaqub, O. Øyen, R. Homeland, E.M. Aandahl, L. Aabakken, et al. 2020. CD4⁺ T cells persist for years in the human small intestine and display a T_H1 cytokine profile. *Mucosal Immunol.* <https://doi.org/10.1038/s41385-020-0315-5>
- Behr, F.M., N.A.M. Kragten, T.H. Wesselink, B. Nota, R.A.W. van Lier, D. Amsen, R. Stark, P. Hombrink, and K.P.J.M. van Gisbergen. 2019. Blimp-1 rather than Hobit drives the formation of tissue-resident memory CD8⁺ T cells in the lungs. *Front. Immunol.* 10:400. <https://doi.org/10.3389/fimmu.2019.00400>
- Bengsch, B., T. Ohtani, O. Khan, M. Setty, S. Manne, S. O'Brien, P.F. Gherardini, R.S. Herati, A.C. Huang, K.-M. Chang, et al. 2018. Epigenomic-guided mass cytometry profiling reveals disease-specific features of exhausted CD8 T cells. *Immunity*. 48:1029–1045.e5. <https://doi.org/10.1016/j.immuni.2018.04.026>
- Beura, L.K., J.S. Mitchell, E.A. Thompson, J.M. Schenkel, J. Mohammed, S. Wijeyesinghe, R. Fonseca, B.J. Burbach, H.D. Hickman, V. Vezys, et al. 2018a. Intravital mucosal imaging of CD8⁺ resident memory T cells shows tissue-autonomous recall responses that amplify secondary memory. *Nat. Immunol.* 19:173–182. <https://doi.org/10.1038/s41590-017-0029-3>
- Beura, L.K., S. Wijeyesinghe, E.A. Thompson, M.G. Macchietto, P.C. Rosato, M.J. Pierson, J.M. Schenkel, J.S. Mitchell, V. Vezys, B.T. Fife, et al. 2018b. T cells in non-lymphoid tissues give rise to lymph-node-resident memory T cells. *Immunity*. 48:327–338.e5. <https://doi.org/10.1016/j.immuni.2018.01.015>
- Bian, Y., W. Li, D.M. Kremer, P. Sajjakulnukit, S. Li, J. Crespo, Z.C. Nwosu, L. Zhang, A. Czerwonka, A. Pawłowska, et al. 2020. Cancer SLC43A2 alters T cell methionine metabolism and histone methylation. *Nature*. 585:277–282. <https://doi.org/10.1038/s41586-020-2682-1>
- Boddupalli, C.S., N. Bar, K. Kadaveru, M. Krauthammer, N. Pornputtpong, Z. Mai, S. Ariyan, D. Narayan, H. Kluger, Y. Deng, et al. 2016. Interlesional diversity of T cell receptors in melanoma with immune checkpoints enriched in tissue-resident memory T cells. *JCI Insight*. 1:e88955. <https://doi.org/10.1172/jci.insight.88955>
- Bösmüller, H.-C., P. Wagner, J.K. Peper, H. Schuster, D.L. Pham, K. Greif, C. Beschorn, H.-G. Rammensee, S. Stevanović, F. Fend, and A. Staehler. 2016. Combined immunoscore of CD103 and CD3 identifies long-term survivors in high-grade serous ovarian cancer. *Int. J. Gynecol. Cancer*. 26:671–679. <https://doi.org/10.1097/IGC.0000000000000672>
- Bourdely, P., G. Anselmi, K. Vaivode, R.N. Ramos, Y. Missolo-Koussou, S. Hidalgo, J. Tosselo, N. Nuñez, W. Richer, A. Vincent-Salomon, et al. 2020. Transcriptional and functional analysis of CD1c⁺ human dendritic cells identifies a CD163⁺ subset priming CD8⁺CD103⁺ T cells. *Immunity*. 53:335–352.e8. <https://doi.org/10.1016/j.immuni.2020.06.002>
- Byrne, A., P. Savas, S. Sant, R. Li, B. Virassamy, S.J. Luen, P.A. Beavis, L.K. Mackay, P.J. Neeson, and S. Loi. 2020. Tissue-resident memory T cells in breast cancer control and immunotherapy responses. *Nat. Rev. Clin. Oncol.* 17:341–348. <https://doi.org/10.1038/s41571-020-0333-y>
- Chen, M., and J. Huang. 2019. The expanded role of fatty acid metabolism in cancer: new aspects and targets. *Precis. Clin. Med.* 2:183–191. <https://doi.org/10.1093/pccmedi/pbz017>
- Chen, L., and Z. Shen. 2020. Tissue-resident memory T cells and their biological characteristics in the recurrence of inflammatory skin disorders. *Cell. Mol. Immunol.* 17:64–75. <https://doi.org/10.1038/s41423-019-0291-4>
- Chowdhury, P.S., K. Chamoto, A. Kumar, and T. Honjo. 2018. PPAR-induced fatty acid oxidation in T cells increases the number of tumor-reactive CD8⁺ T cells and facilitates anti-PD-1 therapy. *Cancer Immunol. Res.* 6:1375–1387. <https://doi.org/10.1158/2326-6066.CIR-18-0095>
- Clark, R.A. 2015. Resident memory T cells in human health and disease. *Sci. Transl. Med.* 7:269rv1. <https://doi.org/10.1126/scitranslmed.3010641>
- Clarke, J., B. Panwar, A. Madrigal, D. Singh, R. Gujar, O. Wood, S.J. Chee, S. Eschweiler, E.V. King, A.S. Awad, et al. 2019. Single-cell transcriptomic analysis of tissue-resident memory T cells in human lung cancer. *J. Exp. Med.* 216:2128–2149. <https://doi.org/10.1084/jem.20190249>
- Cresswell, J., H. Robertson, D.E. Neal, T.R.L. Griffiths, and J.A. Kirby. 2001. Distribution of lymphocytes of the $\alpha(\text{E}\beta)(\gamma)$ phenotype and E-cadherin in normal human urothelium and bladder carcinomas. *Clin. Exp. Immunol.* 126:397–402. <https://doi.org/10.1046/j.1365-2249.2001.01652.x>
- Curiel, T.J., G. Coukos, L. Zou, X. Alvarez, P. Cheng, P. Mottram, M. Evdemon-Hogan, J.R. Conejo-Garcia, L. Zhang, M. Burow, et al. 2004. Specific recruitment of regulatory T cells in ovarian carcinoma fosters immune privilege and predicts reduced survival. *Nat. Med.* 10:942–949. <https://doi.org/10.1038/nm1093>
- Dhodapkar, K.M. 2018. Role of tissue-resident memory in intra-tumor heterogeneity and response to immune checkpoint blockade. *Front. Immunol.* 9:1655. <https://doi.org/10.3389/fimmu.2018.01655>
- Dijkgraaf, F.E., T.R. Matos, M. Hoogenboezem, M. Toebes, D.W. Vredevoogd, M. Mertz, B. van den Broek, J.-Y. Song, M.B.M. Teunissen, R.M. Luiten, et al. 2019. Tissue patrol by resident memory CD8⁺ T cells in human skin. *Nat. Immunol.* 20:756–764. <https://doi.org/10.1038/s41590-019-0404-3>
- Djenidi, F., J. Adam, A. Goubar, A. Durgeau, G. Meurice, V. de Montpréville, P. Validire, B. Besse, and F. Mami-Chouaib. 2015. CD8⁺CD103⁺ tumor-infiltrating lymphocytes are tumor-specific tissue-resident memory T cells and a prognostic factor for survival in lung cancer patients. *J. Immunol.* 194:3475–3486. <https://doi.org/10.4049/jimmunol.1402711>
- Duhen, T., R. Duhen, R. Montler, J. Moses, T. Moudgil, N.F. de Miranda, C.P. Goodall, T.C. Blair, B.A. Fox, J.E. McDermott, et al. 2018. Co-expression of CD39 and CD103 identifies tumor-reactive CD8 T cells in human solid tumors. *Nat. Commun.* 9:2724. <https://doi.org/10.1038/s41467-018-05072-0>
- Edwards, J., J.S. Wilmott, J. Madore, T.N. Gide, C. Quek, A. Tasker, A. Ferguson, J. Chen, R. Hewavisenthi, P. Hersey, et al. 2018. CD103⁺ tumor-resident CD8⁺ T cells are associated with improved survival in immunotherapy-naïve melanoma patients and expand significantly during anti-PD-1 treatment. *Clin. Cancer Res.* 24:3036–3045. <https://doi.org/10.1158/1078-0432.CCR-17-2257>
- Egelston, C.A., C. Avalos, T.Y. Tu, A. Rosario, R. Wang, S. Solomon, G. Srinivasan, M.S. Nelson, Y. Huang, M.H. Lim, et al. 2019. Resident memory CD8⁺ T cells within cancer islands mediate survival in breast cancer patients. *JCI Insight*. 4:e130000. <https://doi.org/10.1172/jci.insight.130000>
- Enamorado, M., S. Iborra, E. Priego, F.J. Cueto, J.A. Quintana, S. Martínez-Cano, E. Mejías-Pérez, M. Esteban, I. Melero, A. Hidalgo, and D. Sancho. 2017. Enhanced anti-tumour immunity requires the interplay between resident and circulating memory CD8⁺ T cells. *Nat. Commun.* 8:16073. <https://doi.org/10.1038/ncomms16073>

- Enamorado, M., S.C. Khouli, S. Iborra, and D. Sancho. 2018. Genealogy, dendritic cell priming, and differentiation of tissue-resident memory CD8⁺ T cells. *Front. Immunol.* 9:1751. <https://doi.org/10.3389/fimmu.2018.01751>
- Farber, D.L., N.A. Yudanin, and N.P. Restifo. 2014. Human memory T cells: generation, compartmentalization and homeostasis. *Nat. Rev. Immunol.* 14:24–35. <https://doi.org/10.1038/nri3567>
- Fonseca, R., L.K. Beura, C.F. Quarnstrom, H.E. Ghoneim, Y. Fan, C.C. Zebley, M.C. Scott, N.J. Fares-Frederickson, S. Wijeyesinghe, E.A. Thompson, et al. 2020. Developmental plasticity allows outside-in immune responses by resident memory T cells. *Nat. Immunol.* 21:412–421. <https://doi.org/10.1038/s41590-020-0607-7>
- Franciszkievicz, K., A. Le Floch, M. Boutet, I. Vergnon, A. Schmitt, and F. Mami-Chouaib. 2013. CD103 or LFA-1 engagement at the immune synapse between cytotoxic T cells and tumor cells promotes maturation and regulates T-cell effector functions. *Cancer Res.* 73:617–628. <https://doi.org/10.1158/0008-5472.CAN-12-2569>
- Frizzell, H., R. Fonseca, S.N. Christo, M. Evrard, S. Cruz-Gomez, N.G. Zanolqui, B. von Scheidt, D. Freestone, S.L. Park, H.E.G. McWilliam, et al. 2020. Organ-specific isoform selection of fatty acid-binding proteins in tissue-resident lymphocytes. *Sci. Immunol.* 5:eaay9283. <https://doi.org/10.1126/sciimmunol.aay9283>
- Gabriely, G., A.P. da Cunha, R.M. Rezende, B. Kenyon, A. Madi, T. Vandeventer, N. Skillin, S. Rubino, L. Garo, M.A. Mazzola, et al. 2017. Targeting latency-associated peptide promotes antitumor immunity. *Sci. Immunol.* 2:eaaj1738. <https://doi.org/10.1126/sciimmunol.aaj1738>
- Gálvez-Cancino, F., E. López, E. Menares, X. Díaz, C. Flores, P. Cáceres, S. Hidalgo, O. Chovar, M. Alcántara-Hernández, V. Borgna, et al. 2018. Vaccination-induced skin-resident memory CD8⁺ T cells mediate strong protection against cutaneous melanoma. *Oncol Immunology.* 7:e1442163. <https://doi.org/10.1080/2162402X.2018.1442163>
- Ganesan, A.-P., J. Clarke, O. Wood, E.M. Garrido-Martin, S.J. Chee, T. Mellows, D. Samaniego-Castruita, D. Singh, G. Seumois, A. Alzetani, et al. 2017. Tissue-resident memory features are linked to the magnitude of cytotoxic T cell responses in human lung cancer. *Nat. Immunol.* 18: 940–950. <https://doi.org/10.1038/ni.3775>
- Gebhardt, T., L.M. Wakim, L. Eidsmo, P.C. Reading, W.R. Heath, and F.R. Carbone. 2009. Memory T cells in nonlymphoid tissue that provide enhanced local immunity during infection with herpes simplex virus. *Nat. Immunol.* 10:524–530. <https://doi.org/10.1038/ni.1718>
- Gebhardt, T., U. Palendira, D.C. Tscharke, and S. Bedouit. 2018. Tissue-resident memory T cells in tissue homeostasis, persistent infection, and cancer surveillance. *Immunol. Rev.* 283:54–76. <https://doi.org/10.1111/imr.12650>
- Glasner, A., A. Levi, J. Enk, B. Isaacson, S. Viukov, S. Orlanski, A. Scope, T. Neuman, C.D. Enk, J.H. Hanna, et al. 2018. NKP46 receptor-mediated interferon- γ production by natural killer cells increases fibronectin 1 to alter tumor architecture and control metastasis. *Immunity.* 48: 107–119.e4. <https://doi.org/10.1016/j.immuni.2017.12.007>
- Glass, W.G., J.K. Lim, R. Cholera, A.G. Pletnev, J.-L. Gao, and P.M. Murphy. 2005. Chemokine receptor CCR5 promotes leukocyte trafficking to the brain and survival in West Nile virus infection. *J. Exp. Med.* 202: 1087–1098. <https://doi.org/10.1084/jem.20042530>
- Guggino, G., A. Rizzo, D. Mauro, F. Macaluso, and F. Ciccia. 2019. Gut-derived CD8⁺ tissue-resident memory T cells are expanded in the peripheral blood and synovia of SpA patients. *Ann. Rheum. Dis.:annrheumdis-2019-216456*. <https://doi.org/10.1136/annrheumdis-2019-216456>
- Haddad, W., C.J. Cooper, Z. Zhang, J.B. Brown, Y. Zhu, A. Issekutz, I. Fuss, H.O. Lee, G.S. Kansas, and T.A. Barrett. 2003. P-selectin and P-selectin glycoprotein ligand 1 are major determinants for Th1 cell recruitment to nonlymphoid effector sites in the intestinal lamina propria. *J. Exp. Med.* 198:369–377. <https://doi.org/10.1084/jem.20020691>
- Han, L., Q.-L. Gao, X.-M. Zhou, C. Shi, G.-Y. Chen, Y.-P. Song, Y.-J. Yao, Y.-M. Zhao, X.-Y. Wen, S.-L. Liu, et al. 2020. Characterization of CD103⁺ CD8⁺ tissue-resident T cells in esophageal squamous cell carcinoma: may be tumor reactive and resurrected by anti-PD-1 blockade. *Cancer Immunol. Immunother.* 69:1493–1504. <https://doi.org/10.1007/s00262-020-02562-3>
- Hartana, C.A., E. Ahlén Bergman, A. Broomé, S. Berglund, M. Johansson, F. Alamdari, T. Jakubczyk, Y. Hüge, F. Aljabery, K. Palmqvist, et al. 2018. Tissue-resident memory T cells are epigenetically cytotoxic with signs of exhaustion in human urinary bladder cancer. *Clin. Exp. Immunol.* 194: 39–53. <https://doi.org/10.1111/cei.13183>
- Hombrink, P., C. Helbig, R.A. Backer, B. Piet, A.E. Oja, R. Stark, G. Brassler, A. Jongejan, R.E. Jonkers, B. Nota, et al. 2016. Programs for the persistence, vigilance and control of human CD8⁺ lung-resident memory T cells. *Nat. Immunol.* 17:1467–1478. <https://doi.org/10.1038/ni.3589>
- Huang, A., P. Huang, Y. Luo, B. Wang, X. Luo, Z. Zheng, K. Yuan, Z. Huang, S. Peng, H. Yu, et al. 2017. CD 103 expression in normal epithelium is associated with poor prognosis of colorectal cancer patients within defined subgroups. *Int. J. Clin. Exp. Pathol.* 10:6624–6634.
- Iborra, S., M. Martínez-López, S.C. Khouli, M. Enamorado, F.J. Cueto, R. Conde-Garrosa, C. Del Fresno, and D. Sancho. 2016. Optimal generation of tissue-resident but not circulating memory T cells during viral infection requires crosspriming by DNGR-1⁺ dendritic cells. *Immunity.* 45: 847–860. <https://doi.org/10.1016/j.immuni.2016.08.019>
- Jeyanathan, M., S. Afkhami, A. Khera, T. Mandur, D. Damjanovic, Y. Yao, R. Lai, S. Haddadi, A. Dvorikin-Gheva, M. Jordana, et al. 2017. CXCR3 signaling is required for restricted homing of parenteral tuberculosis vaccine-induced T cells to both the lung parenchyma and airway. *J. Immunol.* 199:2555–2569. <https://doi.org/10.4049/jimmunol.1700382>
- Jiang, X., R.A. Clark, L. Liu, A.J. Wagers, R.C. Fulbright, and T.S. Kupper. 2012. Skin infection generates non-migratory memory CD8⁺ T_{RM} cells providing global skin immunity. *Nature.* 483:227–231. <https://doi.org/10.1038/nature10851>
- Klein, R.S., E. Lin, B. Zhang, A.D. Luster, J. Tollett, M.A. Samuel, M. Engle, and M.S. Diamond. 2005. Neuronal CXCL10 directs CD8⁺ T-cell recruitment and control of West Nile virus encephalitis. *J. Virol.* 79:11457–11466. <https://doi.org/10.1128/JVI.79.17.11457-11466.2005>
- Klicznik, M.M., P.A. Morawski, B. Höllbacher, S.R. Varkhane, S.J. Motley, L. Kuri-Cervantes, E. Goodwin, M.D. Rosenblum, S.A. Long, G. Brachtel, et al. 2019. Human CD4⁺CD103⁺ cutaneous resident memory T cells are rare in the circulation of healthy individuals. *Sci. Immunol.* 4: eaav8995. <https://doi.org/10.1126/sciimmunol.aav8995>
- Koh, J., S. Kim, M.-Y. Kim, H. Go, Y.K. Jeon, and D.H. Chung. 2017. Prognostic implications of intratumoral CD103⁺ tumor-infiltrating lymphocytes in pulmonary squamous cell carcinoma. *Oncotarget.* 8:13762–13769. <https://doi.org/10.18632/oncotarget.14632>
- Komdeur, F.L., M.C.A. Wouters, H.H. Workel, A.M. Tijans, A.L.J. Terwindt, K.L. Brunekreef, A. Plat, H.G. Klip, F.A. Eggink, N. Leffers, et al. 2016. CD103⁺ intraepithelial T cells in high-grade serous ovarian cancer are phenotypically diverse TCR $\alpha\beta$ ⁺ CD8 $\alpha\beta$ ⁺ T cells that can be targeted for cancer immunotherapy. *Oncotarget.* 7:75130–75144. <https://doi.org/10.18632/oncotarget.12077>
- Komdeur, F.L., T.M. Prins, S. van de Wall, A. Plat, G.B.A. Wisman, H. Hollema, T. Daemen, D.N. Church, M. de Bruyn, and H.W. Nijman. 2017. CD103⁺ tumor-infiltrating lymphocytes are tumor-reactive intraepithelial CD8⁺ T cells associated with prognostic benefit and therapy response in cervical cancer. *Oncol Immunology.* 6:e1338230. <https://doi.org/10.1080/2162402X.2017.1338230>
- Kondo, T., R. Morita, Y. Okuzono, H. Nakatsukasa, T. Sekiya, S. Chikuma, T. Shichita, M. Kanamori, M. Kubo, K. Koga, et al. 2017. Notch-mediated conversion of activated T cells into stem cell memory-like T cells for adoptive immunotherapy. *Nat. Commun.* 8:15338. <https://doi.org/10.1038/ncomms15338>
- Kondo, T., M. Ando, N. Nagai, W. Tomisato, T. Srirat, B. Liu, S. Mise-Omata, M. Ikeda, S. Chikuma, H. Nishimasu, et al. 2020. The NOTCH-FOXMI axis plays a key role in mitochondrial biogenesis in the induction of human stem cell memory-like CAR-T cells. *Cancer Res.* 80:471–483. <https://doi.org/10.1158/0008-5472.CAN-19-1196>
- Krebs, C.F., D. Reimers, Y. Zhao, H.-J. Paust, P. Bartsch, S. Nuñez, M.V. Roseblatt, M. Hellmig, C. Kilian, A. Borchers, et al. 2020. Pathogen-induced tissue-resident memory T_{H17} (T_{RM17}) cells amplify autoimmune kidney disease. *Sci. Immunol.* 5:eaba4163. <https://doi.org/10.1126/sciimmunol.aba4163>
- Kryczek, I., M. Banerjee, P. Cheng, L. Vatan, W. Szeliga, S. Wei, E. Huang, E. Finlayson, D. Simeone, T.H. Welling, et al. 2009. Phenotype, distribution, generation, and functional and clinical relevance of Th17 cells in the human tumor environments. *Blood.* 114:1141–1149. <https://doi.org/10.1182/blood-2009-03-208249>
- Kryczek, I., E. Zhao, Y. Liu, Y. Wang, L. Vatan, W. Szeliga, J. Moyer, A. Klimczak, A. Lange, and W. Zou. 2011. Human TH17 cells are long-lived effector memory cells. *Sci. Transl. Med.* 3:104ra100. <https://doi.org/10.1126/scitranslmed.3002949>
- Kumar, V., S. Patel, E. Tcyganov, and D.I. Gabrilovich. 2016. The nature of myeloid-derived suppressor cells in the tumor microenvironment. *Trends Immunol.* 37:208–220. <https://doi.org/10.1016/j.it.2016.01.004>
- Kumar, B.V., W. Ma, M. Miron, T. Granot, R.S. Guyer, D.J. Carpenter, T. Senda, X. Sun, S.-H. Ho, H. Lerner, et al. 2017. Human tissue-resident memory T cells are defined by core transcriptional and functional

- signatures in lymphoid and mucosal sites. *Cell Rep.* 20:2921–2934. <https://doi.org/10.1016/j.celrep.2017.08.078>
- Kumar, B.V., T.J. Connors, and D.L. Farber. 2018. Human T cell development, localization, and function throughout life. *Immunity.* 48:202–213. <https://doi.org/10.1016/j.immuni.2018.01.007>
- Kurd, N.S., Z. He, T.L. Louis, J.J. Milner, K.D. Omilusik, W. Jin, M.S. Tsai, C.E. Widjaja, J.N. Kanbar, J.G. Olvera, et al. 2020. Early precursors and molecular determinants of tissue-resident memory CD8⁺ T lymphocytes revealed by single-cell RNA sequencing. *Sci. Immunol.* 5:eaa6894. <https://doi.org/10.1126/sciimmunol.aaz6894>
- Lai, J.C.Y., W.K. Cheng, P.D. Hopkins, M. Komba, D.A. Carlow, and J.P. Dutz. 2019. Topical adjuvant application during subcutaneous vaccination promotes resident memory T cell generation. *J. Immunol.* 203:2443–2450. <https://doi.org/10.4049/jimmunol.1900199>
- Le Floch, A., A. Jalil, I. Vergnon, B. Le Maux Chansac, V. Lazar, G. Bismuth, S. Chouaib, and F. Mami-Chouaib. 2007. $\alpha_E\beta_7$ integrin interaction with E-cadherin promotes antitumor CTL activity by triggering lytic granule polarization and exocytosis. *J. Exp. Med.* 204:559–570. <https://doi.org/10.1084/jem.20061524>
- Li, C., B. Zhu, Y.M. Son, Z. Wang, L. Jiang, M. Xiang, Z. Ye, K.E. Beckermann, Y. Wu, J.W. Jenkins, et al. 2019. The transcription factor Bhlhe40 programs mitochondrial regulation of resident CD8⁺ T cell fitness and functionality. *Immunity.* 51:491–507.e7. <https://doi.org/10.1016/j.immuni.2019.08.013>
- Lim, C.J., Y.H. Lee, L. Pan, L. Lai, C. Chua, M. Wasser, T.K.H. Lim, J. Yeong, H.C. Toh, S.Y. Lee, et al. 2019. Multidimensional analyses reveal distinct immune microenvironment in hepatitis B virus-related hepatocellular carcinoma. *Gut.* 68:916–927. <https://doi.org/10.1136/gutjnl-2018-316510>
- Lin, H., S. Wei, E.M. Hurt, M.D. Green, L. Zhao, L. Vatan, W. Szeliga, R. Herbst, P.W. Harms, L.A. Fecher, et al. 2018. Host expression of PD-L1 determines efficacy of PD-L1 pathway blockade-mediated tumor regression. *J. Clin. Invest.* 128:805–815. <https://doi.org/10.1172/JCI96113>
- Lin, R., H. Zhang, Y. Yuan, Q. He, J. Zhou, S. Li, Y. Sun, D.Y. Li, H.-B. Qiu, W. Wang, et al. 2020. Fatty acid oxidation controls CD8⁺ tissue-resident memory T-cell survival in gastric adenocarcinoma. *Cancer Immunol. Res.* 8:479–492. <https://doi.org/10.1158/2326-6066.CIR-19-0702>
- Ling, K.-L., N. Dulphey, P. Bahl, M. Salio, K. Maskell, J. Piris, B.F. Warren, B.D. George, N.J. Mortensen, and V. Cerundolo. 2007. Modulation of CD103 expression on human colon carcinoma-specific CTL. *J. Immunol.* 178:2908–2915. <https://doi.org/10.4049/jimmunol.178.5.2908>
- Lohneis, P., M. Sinn, S. Bischoff, A. Jühling, U. Pelzer, L. Wislocka, M. Bahra, B.V. Sinn, C. Denkert, H. Oettle, et al. 2017. Cytotoxic tumour-infiltrating T lymphocytes influence outcome in resected pancreatic ductal adenocarcinoma. *Eur. J. Cancer.* 83:290–301. <https://doi.org/10.1016/j.ejca.2017.06.016>
- Low, J.S., Y. Farsakoglu, M.C. Amezcua Vesely, E. Sefik, J.B. Kelly, C.C.D. Harman, R. Jackson, J.A. Shyer, X. Jiang, L.S. Cauley, et al. 2020. Tissue-resident memory T cell reactivation by diverse antigen-presenting cells imparts distinct functional responses. *J. Exp. Med.* 217:e20192291. <https://doi.org/10.1084/jem.20192291>
- Ma, C., S. Mishra, E.L. Demel, Y. Liu, and N. Zhang. 2017. TGF- β controls the formation of kidney-resident T cells via promoting effector T cell extravasation. *J. Immunol.* 198:749–756. <https://doi.org/10.4049/jimmunol.1601500>
- Mackay, L.K., A.T. Stock, J.Z. Ma, C.M. Jones, S.J. Kent, S.N. Mueller, W.R. Heath, F.R. Carbone, and T. Gebhardt. 2012. Long-lived epithelial immunity by tissue-resident memory T (TRM) cells in the absence of persisting local antigen presentation. *Proc. Natl. Acad. Sci. USA.* 109:7037–7042. <https://doi.org/10.1073/pnas.1202288109>
- Mackay, L.K., A. Braun, B.L. Macleod, N. Collins, C. Tebartz, S. Bedoui, F.R. Carbone, and T. Gebhardt. 2015. Cutting edge: CD69 interference with sphingosine-1-phosphate receptor regulates peripheral T cell retention. *J. Immunol.* 194:2059–2063. <https://doi.org/10.4049/jimmunol.1402256>
- Mackay, L.K., M. Minnich, N.A.M. Kragten, Y. Liao, B. Nota, C. Seillet, A. Zaid, K. Man, S. Preston, D. Freestone, et al. 2016. Hobit and Blimp1 instruct a universal transcriptional program of tissue residency in lymphocytes. *Science.* 352:459–463. <https://doi.org/10.1126/science.1252035>
- Malik, B.T., K.T. Byrne, J.L. Vella, P. Zhang, T.B. Shabaneh, S.M. Steinberg, A.K. Molodtsov, J.S. Bowers, C.V. Angeles, C.M. Paulos, et al. 2017. Resident memory T cells in the skin mediate durable immunity to melanoma. *Sci. Immunol.* 2:eaa6346. <https://doi.org/10.1126/sciimmunol.aam6346>
- Mami-Chouaib, F., C. Blanc, S. Corgnac, S. Hans, I. Malenica, C. Granier, I. Tihy, and E. Tartour. 2018. Resident memory T cells, critical components in tumor immunology. *J. Immunother. Cancer.* 6:87. <https://doi.org/10.1186/s40425-018-0399-6>
- Mani, V., S.K. Bromley, T. Åijö, R. Mora-Buch, E. Carrizosa, R.D. Warner, M. Hamze, D.R. Sen, A.Y. Chasse, A. Lorant, et al. 2019. Migratory DCs activate TGF- β to precondition naïve CD8⁺ T cells for tissue-resident memory fate. *Science.* 366:eaav5728. <https://doi.org/10.1126/science.aav5728>
- Masopust, D., and A.G. Soerens. 2019. Tissue-resident T cells and other resident leukocytes. *Annu. Rev. Immunol.* 37:521–546. <https://doi.org/10.1146/annurev-immunol-042617-053214>
- Masopust, D., D. Choo, V. Vezys, E.J. Wherry, J. Duraiswamy, R. Akondy, J. Wang, K.A. Casey, D.L. Barber, K.S. Kawamura, et al. 2010. Dynamic T cell migration program provides resident memory within intestinal epithelium. *J. Exp. Med.* 207:553–564. <https://doi.org/10.1084/jem.20090858>
- McMaster, S.R., J.J. Wilson, H. Wang, and J.E. Kohlmeier. 2015. Airway-resident memory CD8 T cells provide antigen-specific protection against respiratory virus challenge through rapid IFN- γ production. *J. Immunol.* 195:203–209. <https://doi.org/10.4049/jimmunol.1402975>
- Menares, E., F. Gálvez-Cancino, P. Cáceres-Morgado, E. Ghorani, E. López, X. Díaz, J. Saavedra-Almarza, D.A. Figueroa, E. Roa, S.A. Quezada, and A. Lladser. 2019. Tissue-resident memory CD8⁺ T cells amplify anti-tumor immunity by triggering antigen spreading through dendritic cells. *Nat. Commun.* 10:4401. <https://doi.org/10.1038/s41467-019-12319-x>
- Milner, J.J., and A.W. Goldrath. 2018. Transcriptional programming of tissue-resident memory CD8⁺ T cells. *Curr. Opin. Immunol.* 51:162–169. <https://doi.org/10.1016/j.coi.2018.03.017>
- Milner, J.J., C. Toma, B. Yu, K. Zhang, K. Omilusik, A.T. Phan, D. Wang, A.J. Getzler, T. Nguyen, S. Crotty, et al. 2017. Runx3 programs CD8⁺ T cell residency in non-lymphoid tissues and tumours. *Nature.* 552:253–257. <https://doi.org/10.1038/nature24993>
- Milner, J.J., C. Toma, Z. He, N.S. Kurd, Q.P. Nguyen, B. McDonald, L. Quezada, C.E. Widjaja, D.A. Witherden, J.T. Crowl, et al. 2020. Heterogenous populations of tissue-resident CD8⁺ T cells are generated in response to infection and malignancy. *Immunity.* 52:808–824.e7. <https://doi.org/10.1016/j.immuni.2020.04.007>
- Molodtsov, A., and M.J. Turk. 2018. Tissue resident CD8 memory T cell responses in cancer and autoimmunity. *Front. Immunol.* 9:2810. <https://doi.org/10.3389/fimmu.2018.02810>
- Murray, T., S.A. Fuertes Marraco, P. Baumgaertner, N. Bordry, L. Cagnon, A. Donda, P. Romero, G. Verdeil, and D.E. Speiser. 2016. Very late antigen-1 marks functional tumor-resident CD8 T cells and correlates with survival of melanoma patients. *Front. Immunol.* 7:573. <https://doi.org/10.3389/fimmu.2016.00573>
- Muruganandah, V., H.D. Sathkumara, S. Navarro, and A. Kupz. 2018. A systematic review: the role of resident memory T cells in infectious diseases and their relevance for vaccine development. *Front. Immunol.* 9:1574. <https://doi.org/10.3389/fimmu.2018.01574>
- Nizard, M., H. Roussel, M.O. Diniz, S. Karaki, T. Tran, T. Voron, E. Dransart, F. Sandoval, M. Riquet, B. Rance, et al. 2017. Induction of resident memory T cells enhances the efficacy of cancer vaccine. *Nat. Commun.* 8:15221. <https://doi.org/10.1038/ncomms15221>
- O'Hara, J.M., N.S. Redhu, E. Cheung, N.G. Robertson, I. Patik, S.E. Sayed, C.M. Thompson, M. Herd, K.B. Lucas, E. Conaway, et al. 2020. Generation of protective pneumococcal-specific nasal resident memory CD4⁺ T cells via parenteral immunization. *Mucosal Immunol.* 13:172–182. <https://doi.org/10.1038/s41385-019-0218-5>
- Ohmatsu, H., T. Kadono, M. Sugaya, M. Tomita, H. Kai, T. Miyagaki, H. Saeki, K. Tamaki, D.A. Steeber, T.F. Tedder, and S. Sato. 2010. $\alpha_4\beta_7$ Integrin is essential for contact hypersensitivity by regulating migration of T cells to skin. *J. Allergy Clin. Immunol.* 126:1267–1276. <https://doi.org/10.1016/j.jaci.2010.08.048>
- Paik, D.H., and D.L. Farber. 2021. Anti-viral protective capacity of tissue resident memory T cells. *Curr. Opin. Virol.* 46:20–26. <https://doi.org/10.1016/j.coviro.2020.09.006>
- Pallett, L.J., A.R. Burton, O.E. Amin, S. Rodriguez-Tajes, A.A. Patel, N. Zakeri, A. Jeffery-Smith, L. Swadling, N.M. Schmidt, A. Baiges, et al. 2020. Longevity and replenishment of human liver-resident memory T cells and mononuclear phagocytes. *J. Exp. Med.* 217:e20200050. <https://doi.org/10.1084/jem.20200050>
- Pan, Y., T. Tian, C.O. Park, S.Y. Lofftus, S. Mei, X. Liu, C. Luo, J.T. O'Malley, A. Gehad, J.E. Teague, et al. 2017. Survival of tissue-resident memory T cells requires exogenous lipid uptake and metabolism. *Nature.* 543:252–256. <https://doi.org/10.1038/nature21379>
- Pao, W., C.-H. Ooi, F. Birzele, A. Ruefli-Brasse, M.A. Cannarile, B. Reis, S.H. Scharf, D.A. Schubert, K. Hatje, N. Pelletier, et al. 2018. Tissue-specific

- immunoregulation: a call for better understanding of the “Immunostat” in the context of cancer. *Cancer Discov.* 8:395–402. <https://doi.org/10.1158/2159-8290.CD-17-1320>
- Park, C.O., and T.S. Kupper. 2015. The emerging role of resident memory T cells in protective immunity and inflammatory disease. *Nat. Med.* 21: 688–697. <https://doi.org/10.1038/nm.3883>
- Park, S.L., A. Zaid, J.L. Hor, S.N. Christo, J.E. Prier, B. Davies, Y.O. Alexandre, J.L. Gregory, T.A. Russell, T. Gebhardt, et al. 2018. Local proliferation maintains a stable pool of tissue-resident memory T cells after antiviral recall responses. *Nat. Immunol.* 19:183–191. <https://doi.org/10.1038/s41590-017-0027-5>
- Park, S.L., T. Gebhardt, and L.K. Mackay. 2019. Tissue-resident memory T cells in cancer immunosurveillance. *Trends Immunol.* 40:735–747. <https://doi.org/10.1016/j.it.2019.06.002>
- Park, S.L., A. Buzzai, J. Rautela, J.L. Hor, K. Hochheiser, M. Effern, N. McBain, T. Wagner, J. Edwards, R. McConville, et al. 2019a. Tissue-resident memory CD8⁺ T cells promote melanoma-immune equilibrium in skin. *Nature.* 565:366–371. <https://doi.org/10.1038/s41586-018-0812-9>
- Qaiyum, Z., E. Gracey, Y. Yao, and R.D. Inman. 2019. Integrin and transcriptomic profiles identify a distinctive synovial CD8⁺ T cell subpopulation in spondyloarthritis. *Ann. Rheum. Dis.* 78:1566–1575. <https://doi.org/10.1136/annrheumdis-2019-215349>
- Raphael, I., R.R. Joern, and T.G. Forsthuber. 2020. Memory CD4⁺ T cells in immunity and autoimmune diseases. *Cells.* 9:531. <https://doi.org/10.3390/cells9030531>
- Sandoval, F., M. Terme, M. Nizard, C. Badoual, M.-F. Bureau, L. Freyburger, O. Clement, E. Marcheteau, A. Gey, G. Fraisse, et al. 2013. Mucosal imprinting of vaccine-induced CD8⁺ T cells is crucial to inhibit the growth of mucosal tumors. *Sci. Transl. Med.* 5:172ra20. <https://doi.org/10.1126/scitranslmed.3004888>
- Santoiemma, P.P., C. Reyes, L.-P. Wang, M.W. McLane, M.D. Feldman, J.L. Tanyi, and D.J. Powell Jr. 2016. Systematic evaluation of multiple immune markers reveals prognostic factors in ovarian cancer. *Gynecol. Oncol.* 143:120–127. <https://doi.org/10.1016/j.ygyno.2016.07.105>
- Sasson, S.C., C.L. Gordon, S.N. Christo, P. Klenerman, and L.K. Mackay. 2020. Local heroes or villains: tissue-resident memory T cells in human health and disease. *Cell. Mol. Immunol.* 17:113–122. <https://doi.org/10.1038/s41423-019-0359-1>
- Savas, P., B. Virassamy, C. Ye, A. Salim, C.P. Mintoff, F. Caramia, R. Salgado, D.J. Byrne, Z.L. Teo, S. Dushyanthen, et al. Kathleen Cuninghame Foundation Consortium for Research into Familial Breast Cancer (kConFab). 2018. Single-cell profiling of breast cancer T cells reveals a tissue-resident memory subset associated with improved prognosis. *Nat. Med.* 24:986–993. <https://doi.org/10.1038/s41591-018-0078-7>
- Schenkel, J.M., and D. Masopust. 2014. Tissue-resident memory T cells. *Immunity.* 41:886–897. <https://doi.org/10.1016/j.immuni.2014.12.007>
- Schenkel, J.M., K.A. Fraser, V. Vezys, and D. Masopust. 2013. Sensing and alarm function of resident memory CD8⁺ T cells. *Nat. Immunol.* 14: 509–513. <https://doi.org/10.1038/ni.2568>
- Schenkel, J.M., K.A. Fraser, L.K. Beura, K.E. Pauken, V. Vezys, and D. Masopust. 2014. T cell memory. Resident memory CD8 T cells trigger protective innate and adaptive immune responses. *Science.* 346:98–101. <https://doi.org/10.1126/science.1254536>
- Shin, H., Y. Kumamoto, S. Gopinath, and A. Iwasaki. 2016. CD301b⁺ dendritic cells stimulate tissue-resident memory CD8⁺ T cells to protect against genital HSV-2. *Nat. Commun.* 7:13346. <https://doi.org/10.1038/ncomms13346>
- Skon, C.N., J.-Y. Lee, K.G. Anderson, D. Masopust, K.A. Hogquist, and S.C. Jameson. 2013. Transcriptional downregulation of Slpr1 is required for the establishment of resident memory CD8⁺ T cells. *Nat. Immunol.* 14: 1285–1293. <https://doi.org/10.1038/ni.2745>
- Smazynski, J., and J.R. Webb. 2018. Resident memory-like tumor-infiltrating lymphocytes (TILRM): latest players in the immuno-oncology repertoire. *Front. Immunol.* 9:1741. <https://doi.org/10.3389/fimmu.2018.01741>
- Snyder, M.E., M.O. Finlayson, T.J. Connors, P. Dogra, T. Senda, E. Bush, D. Carpenter, C. Marboe, L. Benvenuto, L. Shah, et al. 2019. Generation and persistence of human tissue-resident memory T cells in lung transplantation. *Sci. Immunol.* 4:eaav5581. <https://doi.org/10.1126/sciimmunol.aav5581>
- Sowell, R.T., J.W. Goldufsky, M. Rogozinska, Z. Quiles, Y. Cao, E.F. Castillo, A. Finnegan, and A.L. Marzo. 2017. IL-15 complexes induce migration of resting memory CD8 T cells into mucosal tissues. *J. Immunol.* 199: 2536–2546. <https://doi.org/10.4049/jimmunol.1501638>
- Steinert, E.M., J.M. Schenkel, K.A. Fraser, L.K. Beura, L.S. Manlove, B.Z. Ig-yártó, P.J. Southern, and D. Masopust. 2015. Quantifying memory CD8 T cells reveals regionalization of immunosurveillance. *Cell.* 161:737–749. <https://doi.org/10.1016/j.cell.2015.03.031>
- Stolley, J.M., T.S. Johnston, A.G. Soerens, L.K. Beura, P.C. Rosato, V. Joag, S.P. Wijeyesinghe, R.A. Langlois, K.C. Osum, J.S. Mitchell, and D. Masopust. 2020. Retrograde migration supplies resident memory T cells to lung-draining LN after influenza infection. *J. Exp. Med.* 217:e20192197. <https://doi.org/10.1084/jem.20192197>
- Sun, Y.-Y., S. Peng, L. Han, J. Qiu, L. Song, Y. Tsai, B. Yang, R.B.S. Roden, C.L. Trimble, C.-F. Hung, and T.C. Wu. 2016. Local HPV recombinant vaccination boost following priming with an HPV DNA vaccine enhances local HPV-specific CD8⁺ T-cell-mediated tumor control in the genital tract. *Clin. Cancer Res.* 22:657–669. <https://doi.org/10.1158/1078-0432.CCR-15-0234>
- Sun, H., C. Sun, W. Xiao, and R. Sun. 2019. Tissue-resident lymphocytes: from adaptive to innate immunity. *Cell. Mol. Immunol.* 16:205–215. <https://doi.org/10.1038/s41423-018-0192-y>
- Szabo, P.A., M. Miron, and D.L. Farber. 2019. Location, location, location: Tissue resident memory T cells in mice and humans. *Sci. Immunol.* 4: eaas9673. <https://doi.org/10.1126/sciimmunol.aas9673>
- Tang, L., Y. Zheng, M.B. Melo, L. Mabardi, A.P. Castaño, Y.-Q. Xie, N. Li, S.B. Kudchodkar, H.C. Wong, E.K. Jeng, et al. 2018. Enhancing T cell therapy through TCR-signaling-responsive nanoparticle drug delivery. *Nat. Biotechnol.* 36:707–716. <https://doi.org/10.1038/nbt.4181>
- Teijaro, J.R., D. Turner, Q. Pham, E.J. Wherry, L. Lefrançois, and D.L. Farber. 2011. Cutting edge: Tissue-retentive lung memory CD4 T cells mediate optimal protection to respiratory virus infection. *J. Immunol.* 187: 5510–5514. <https://doi.org/10.4049/jimmunol.1102243>
- Turner, D.L., K.L. Bickham, J.J.T. Thome, C.Y. Kim, F. D’Ovidio, E.J. Wherry, and D.L. Farber. 2014. Lung niches for the generation and maintenance of tissue-resident memory T cells. *Mucosal Immunol.* 7:501–510. <https://doi.org/10.1038/mi.2013.67>
- Uddäck, I., E.K. Cartwright, A.S. Schöller, A.N. Wein, S.L. Hayward, J. Lobby, S. Takamura, A.R. Thomsen, J.E. Kohlmeier, and J.P. Christensen. 2021. Long-term maintenance of lung resident memory T cells is mediated by persistent antigen. *Mucosal Immunol.* 14:92–99. <https://doi.org/10.1038/s41385-020-0309-3>
- Wang, W., and W. Zou. 2020. Amino acids and their transporters in T cell immunity and cancer therapy. *Mol. Cell.* 80:384–395. <https://doi.org/10.1016/j.molcel.2020.09.006>
- Wang, B., S. Wu, H. Zeng, Z. Liu, W. Dong, W. He, X. Chen, X. Dong, L. Zheng, T. Lin, and J. Huang. 2015. CD103⁺ tumor infiltrating lymphocytes predict a favorable prognosis in urothelial cell carcinoma of the bladder. *J. Urol.* 194:556–562. <https://doi.org/10.1016/j.juro.2015.02.2941>
- Wang, Z.-Q., K. Milne, H. Derocher, J.R. Webb, B.H. Nelson, and P.H. Watson. 2016. CD103 and intratumoral immune response in breast cancer. *Clin. Cancer Res.* 22:6290–6297. <https://doi.org/10.1158/1078-0432.CCR-16-0732>
- Webb, J.R., K. Milne, P. Watson, R.J. Deleeuw, and B.H. Nelson. 2014. Tumor-infiltrating lymphocytes expressing the tissue resident memory marker CD103 are associated with increased survival in high-grade serous ovarian cancer. *Clin. Cancer Res.* 20:434–444. <https://doi.org/10.1158/1078-0432.CCR-13-1877>
- Webb, J.R., K. Milne, and B.H. Nelson. 2015. PD-1 and CD103 are widely coexpressed on prognostically favorable intraepithelial CD8 T cells in human ovarian cancer. *Cancer Immunol. Res.* 3:926–935. <https://doi.org/10.1158/2326-6066.CIR-14-0239>
- Wein, A.N., S.R. McMaster, S. Takamura, P.R. Dunbar, E.K. Cartwright, S.L. Hayward, D.T. McManus, T. Shimaoka, S. Ueha, T. Tsukui, et al. 2019. CXCR6 regulates localization of tissue-resident memory CD8 T cells to the airways. *J. Exp. Med.* 216:2748–2762. <https://doi.org/10.1084/jem.20181308>
- Weisberg, S.P., D.J. Carpenter, M. Chait, P. Dogra, R.D. Gartrell-Corrado, A.X. Chen, S. Campbell, W. Liu, P. Saraf, M.E. Snyder, et al. 2019. Tissue-resident memory T cells mediate immune homeostasis in the human pancreas through the PD-1/PD-L1 pathway. *Cell Rep.* 29:3916–3932.e5. <https://doi.org/10.1016/j.celrep.2019.11.056>
- Wilk, M.M., and K.H.G. Mills. 2018. CD4 TRM cells following infection and immunization: implications for more effective vaccine design. *Front. Immunol.* 9:1860. <https://doi.org/10.3389/fimmu.2018.01860>
- Workel, H.H., F.L. Komdeur, M.C.A. Wouters, A. Plat, H.G. Klip, F.A. Eggink, G.B.A. Wisman, H.J.G. Arts, M.H.M. Oonk, M.J.E. Mourits, et al. 2016. CD103 defines intraepithelial CD8⁺ PD1⁺ tumour-infiltrating lymphocytes of prognostic significance in endometrial adenocarcinoma. *Eur. J. Cancer.* 60:1–11. <https://doi.org/10.1016/j.ejca.2016.02.026>
- Wu, T.-C., K. Xu, R. Banchemareau, F. Marches, C.I. Yu, J. Martinek, E. Anguiano, A. Pedroza-Gonzalez, G.J. Snipes, J. O’Shaughnessy, et al. 2014.

- Reprogramming tumor-infiltrating dendritic cells for CD103⁺ CD8⁺ mucosal T-cell differentiation and breast cancer rejection. *Cancer Immunol. Res.* 2:487–500. <https://doi.org/10.1158/2326-6066.CIR-13-0217>
- Wu, X., P. Wu, Y. Shen, X. Jiang, and F. Xu. 2018. CD8⁺ resident memory T cells and viral infection. *Front. Immunol.* 9:2093. <https://doi.org/10.3389/fimmu.2018.02093>
- Xie, Y.-Q., H. Arik, L. Wei, Y. Zheng, H. Suh, D.J. Irvine, and L. Tang. 2019. Redox-responsive interleukin-2 nanogel specifically and safely promotes the proliferation and memory precursor differentiation of tumor-reactive T-cells. *Biomater. Sci.* 7:1345–1357. <https://doi.org/10.1039/C8BM01556B>
- Yu, C.I., C. Becker, Y. Wang, F. Marches, J. Helft, M. Leboeuf, E. Anguiano, S. Pourpe, K. Goller, V. Pascual, et al. 2013. Human CD1c⁺ dendritic cells drive the differentiation of CD103⁺ CD8⁺ mucosal effector T cells via the cytokine TGF- β . *Immunity.* 38:818–830. <https://doi.org/10.1016/j.immuni.2013.03.004>
- Zhang, N., and M.J. Bevan. 2013. Transforming growth factor- β signaling controls the formation and maintenance of gut-resident memory T cells by regulating migration and retention. *Immunity.* 39:687–696. <https://doi.org/10.1016/j.immuni.2013.08.019>
- Zhang, Y., R. Kurupati, L. Liu, X.Y. Zhou, G. Zhang, A. Hudaihed, F. Filisio, W. Giles-Davis, X. Xu, G.C. Karakousis, et al. 2017. Enhancing CD8⁺ T cell fatty acid catabolism within a metabolically challenging tumor micro-environment increases the efficacy of melanoma immunotherapy. *Cancer Cell.* 32:377–391.e9. <https://doi.org/10.1016/j.ccell.2017.08.004>
- Zhao, E., T. Maj, I. Kryczek, W. Li, K. Wu, L. Zhao, S. Wei, J. Crespo, S. Wan, L. Vatan, et al. 2016. Cancer mediates effector T cell dysfunction by targeting microRNAs and EZH2 via glycolysis restriction. *Nat. Immunol.* 17:95–103. <https://doi.org/10.1038/ni.3313>
- Zhu, J., D.M. Koelle, J. Cao, J. Vazquez, M.L. Huang, F. Hladik, A. Wald, and L. Corey. 2007. Virus-specific CD8⁺ T cells accumulate near sensory nerve endings in genital skin during subclinical HSV-2 reactivation. *J. Exp. Med.* 204:595–603. <https://doi.org/10.1084/jem.20061792>
- Zou, W. 2005. Immunosuppressive networks in the tumour environment and their therapeutic relevance. *Nat. Rev. Cancer.* 5:263–274. <https://doi.org/10.1038/nrc1586>
- Zou, W., J.D. Wolchok, and L. Chen. 2016. PD-L1 (B7-H1) and PD-1 pathway blockade for cancer therapy: Mechanisms, response biomarkers, and combinations. *Sci. Transl. Med.* 8:328rv4. <https://doi.org/10.1126/scitranslmed.aad7118>