



Cost-effectiveness analysis of intraoperative radiation therapy versus external beam radiation therapy for the adjuvant treatment of early breast cancer: A systematic review

Mahmoud Eisavi¹, Aziz Rezapour², Vahid Alipour², Hamid Reza Mirzaei³, Jalal Arabloo*² 

Received: 6 Apr 2020

Published: 10 Dec 2020

Abstract

Background: Breast-conserving surgery (BCS) is the recommended treatment for early breast cancer. After BCS, Whole-breast external beam radiotherapy (WB-EBRT) is the standard of care. A possible alternative to post-operative WB-EBRT is intraoperative radiation therapy (IORT). The objectives of this systematic review were to analyse the cost-effectiveness of IORT versus EBRT for early-stage breast cancer and to assess the reporting quality of the included studies to inform future studies.

Methods: A systematic literature search was carried out in five main databases (PubMed, Scopus, Embase, Cochrane library, and Web of Science) to identify original studies published to June 25, 2020. We included all full economic evaluation studies (cost-effectiveness analysis (CEA), cost-utility analysis (CUA), and cost-benefit analysis (CBA), Model-based or trial-based) that assessed and compared IORT and EBRT in patients with early operable breast cancer. Study outcomes included cost per life-years gained or cost per quality-adjusted life-years (QALYs) gained or in monetary units or incremental cost-effectiveness ratio (ICER). The quality of the included articles was assessed using the Consolidated Health Economic Evaluation Reporting Standards (CHEERS) checklist. This review has been conducted and reported in accordance with the Preferred Reporting Items for Systematic Reviews and Meta-Analyses (PRISMA) statement.

Results: Of 1155 studies identified, eight studies met the inclusion criteria. In four studies, IORT was associated with lower costs and higher effectiveness than EBRT. In three studies, the dominant option was EBRT. In these studies, IORT also had lower costs and lower effectiveness than EBRT. Existing evidence suggests that IORT can be a cost-effective alternative to early breast cancer treatment by reducing therapeutic costs. Variables of cost-effectiveness were treatment costs, health state utilities, local and distant recurrence rates, and the probabilities of metastasis after treatment, recurrent cancer and death for both IORT and EBRT. The reporting quality of the included studies was “high” in five, “medium quality” in one and “low” in two studies.

Conclusion: Current evidence is sparse, and the number of studies was small but this evidence proposes that IORT can be a potential cost-saving strategy to the health systems for the adjuvant treatment of early breast cancer if the technology was carried out routinely in eligible patients. However, these results should be interpreted with caution because of the heterogeneity of studies and possible publication bias.

Keywords: Systematic review, Breast cancer, Cost-effectiveness analysis, Intraoperative radiation therapy, External beam radiation therapy

Conflicts of Interest: None declared

Funding: None

*This work has been published under CC BY-NC-SA 1.0 license.

Copyright © Iran University of Medical Sciences

Cite this article as: Eisavi M, Rezapour A, Alipour V, Mirzaei HR, Arabloo J. Cost-effectiveness analysis of intraoperative radiation therapy versus external beam radiation therapy for the adjuvant treatment of early breast cancer: A systematic review. *Med J Islam Repub Iran.* 2020 (10 Dec);34:167. <https://doi.org/10.47176/mjiri.34.167>

Corresponding author: Dr Jalal Arabloo, arabloo.j@iums.ac.ir

¹ Faculty of Economics, Allameh Tabataba'i University, Tehran, Iran

² Health Management and Economics Research Center, Iran University of Medical Sciences, Tehran, Iran

³ Cancer Research Center, Shahid Beheshti University of Medical Sciences, Tehran, Iran

↑What is “already known” in this topic:

New less invasive technologies such as intraoperative radiation therapy (IORT) can play an essential role for patients who cannot use external beam radiotherapy (EBRT).

→What this article adds:

IORT has the potential to provide comparable or better outcomes for patients for early breast cancer and to be a cost-effective strategy from the health system perspective compared with EBRT.

Introduction

Breast cancer is the most common cancer and the leading cause of cancer deaths and disability-adjusted life-years (DALYs) among women worldwide (1). For a large proportion of women with early localized breast cancer, the recommended treatment is breast-conserving surgery (BCS) followed by postoperative radiotherapy, whole-breast external-beam radiation therapy (EBRT), which requires daily therapy for 4–7 weeks (2–4). EBRT after lumpectomy reduces the risk of local recurrence more than 10% at 5 years and reduces the risk of breast cancer death at 15 years for women with early invasive breast cancer (5, 6). Thus, post-operative WB-EBRT is the standard of care for patients with early invasive breast cancer after breast-conserving surgery (7). However, EBRT has some disadvantages. The long course of treatment is uncomfortable for patients and may require several travels to receive care. WB-EBRT may also be associated with short and long term adverse effects and can be impossible to deliver effectively in all patients (8).

New less invasive technologies such as IORT can play an essential role for patients who cannot use EBRT. The large international multicenter randomized controlled trial (RCT) of targeted intraoperative radiotherapy-alone (TARGIT-A) has confirmed the safety and effectiveness of the technique of targeted intraoperative radiotherapy (TARGIT-IORT) in women with early breast cancer (9). TARGIT-IORT and EBRT resulted in similar local recurrence-free survival (10). IORT requires only 25–30 min for a single dose of radiation treatment, greatly reducing the time and travel costs required for whole breast radiation therapy. IORT could potentially improve access to breast conservation by reducing costs and time required for patients to receive radiotherapy in resource-limited settings. Therefore, it is an interesting alternative for women who are candidates for breast-conserving surgery (11).

Considering the resources limitations, along with the above-mentioned innovations in the management of breast cancer, providing a light picture of the economic aspects of the technologies is increasingly important to help policy-makers to efficiently allocate health system resources. The purposes of this systematic review were to identify the relevant economic evaluation studies of intraoperative radiation therapy versus external beam radiation therapy, assess the quality of the included studies to support future cost-effectiveness studies in this field, and summarize the cost-effectiveness results on the existing therapies of early breast cancer.

Methods

Identification of studies

A systematic search was conducted in PubMed, Scopus, Embase, Cochrane library, and Web of Science to identify original studies published up to June 25, 2020. The search strategy consisted of keywords and Mesh. There was no restriction on language or publication date. Separate search strategies were developed for each database (Appendix 1). List of references of eligible full text articles were further

screened in order to find eligible studies. Studies were required to meet the following criteria in order to be included in the review:

- Population: people with early operable breast cancer;
 - Intervention: IORT with or without post-operative WB-EBRT;
 - Comparator: WB-EBRT delivered by linear accelerator after BSC;
 - Outcomes: cost per life-years gained or cost per quality-adjusted life-years (QALYs) gained or in monetary units or incremental cost-effectiveness ratio (ICER)];
 - Study design: Full economic evaluation studies (cost-effectiveness analysis (CEA), cost-utility analysis (CUA), and cost-benefit analysis (CBA), Model-based or trial-based;
 - Setting, country: all countries, all settings
- Exclusion criteria were:
- Partial economic evaluation studies (cost-minimization analysis, cost-analysis) or non-economic evaluation studies
 - Reviews, Commentaries (letters to the editors, editorials), protocols, Abstracts or conference presentations
 - Non-English language full-text studies
 - Duplicated publications

Selection of Studies

After removing duplicates, titles and abstracts of studies were screened independently by two researchers to identify all studies that potentially met the inclusion/exclusion criteria detailed above. Fulltexts of selected studies that appeared potentially relevant were obtained. These were assessed by one researcher against the eligibility criteria and checked independently by a second researcher. Any disagreements were resolved by discussion. The agreement was reached on all included studies.

Data extraction and quality assessment of the studies

Data extraction was performed by one reviewer (JA) and checked by a second reviewer (VA). Disagreements were resolved by discussion at each stage. Data were extracted using a researcher-made extraction table. Data extracted from each study included publication year, country, perspective, willing-to-pay threshold, type of economic evaluation, modeling approach, model states, time horizon, discount rates (costs, QALY), type of costing, included costs, outcome measures, type of sensitivity analysis, industry funding, population, comparators, and results.

Included studies were then assessed using the CHEERS checklist (12, 13). The CHEERS tool consists of twenty-four items in six sections (title and abstract, introduction, methods, results, discussion, and other) and were scored using 'Yes' (reported in full), 'Partially reported', 'No' (not reported), and 'Not Applicable'. Two researchers (JA and VA) independently assessed the included studies with disagreements resolved through consensus. In order to estimate a score of reporting, we allocated a score of 1 for each item that was reported in full, 0.5 for a partial report and otherwise 0. Therefore, the maximum score for each study was 24 (14). Then, the studies were classified based on

quantitative CHEERS scores in three categories of “high quality” for scores over 75%, “moderate quality” between 50 and 75% and “low quality” below 50%.

Data synthesis

Data were synthesized qualitatively, with tabulation of the key characteristics and results of included studies. This systematic review has been conducted and reported in accordance with the Preferred Reporting Items for Systematic Reviews and Meta-Analyses (PRISMA) statement (15).

Results

Study Selection Process

The searches identified 1155 citations (Fig. 1). After the removal of duplicates and screening of title/abstract, 12 articles were eligible for full-text assessment. Four studies were excluded because the studies were published as abstracts (16-18) or had irrelevant outcomes (19). Finally, 8 studies were included in the systematic review.

Overview of Included Studies

The key characteristics of all included studies are reported in Table 1. All studies were published between 2013 and 2019. Four studies were conducted in the USA (20-23), three studies in the UK (8, 24, 25) and one study in Czech (26). All studies were used a Markov modeling approach, except the studies of Shah et al. (23) and Vaidya et

al. (25) that used reimbursement models or were trial-based. Two studies were applied societal perspectives (20, 23), two used a payer perspective (22, 26), one study both societal and health care sector (21) and the remaining studies reported results from the perspective of the National Health Service (NHS) (8, 24, 25). All studies used quality-adjusted life-years (QALYs) as the effectiveness outcome. One study applied a 5 years’ time horizon (25), three studies a 10 years’ time horizon (20, 23, 24), two studies a 40 years’ time horizon (8, 26) and two studies considered a lifetime horizon (21, 22). Sensitivity analysis was conducted in the majority of included studies (N=7) although the type of approaches varied (8, 20-22, 24-26).

Quality of Reporting Assessment

The summary results of the quality of reporting assessment for each study are presented in Table 2. Figure 2 illustrates the proportion of studies reported ‘in full’, ‘Partially’, ‘not reported’ and ‘Not Applicable’. Quality scores ranged from 7 to 23 out of a maximum value of 24 points, with an average score of 17 (Table 2). Five studies were classified in the category of “high quality” (8, 22, 24, 25) one into (20) the “medium quality” category and two studies (23, 26) fell into the “low” reporting quality.

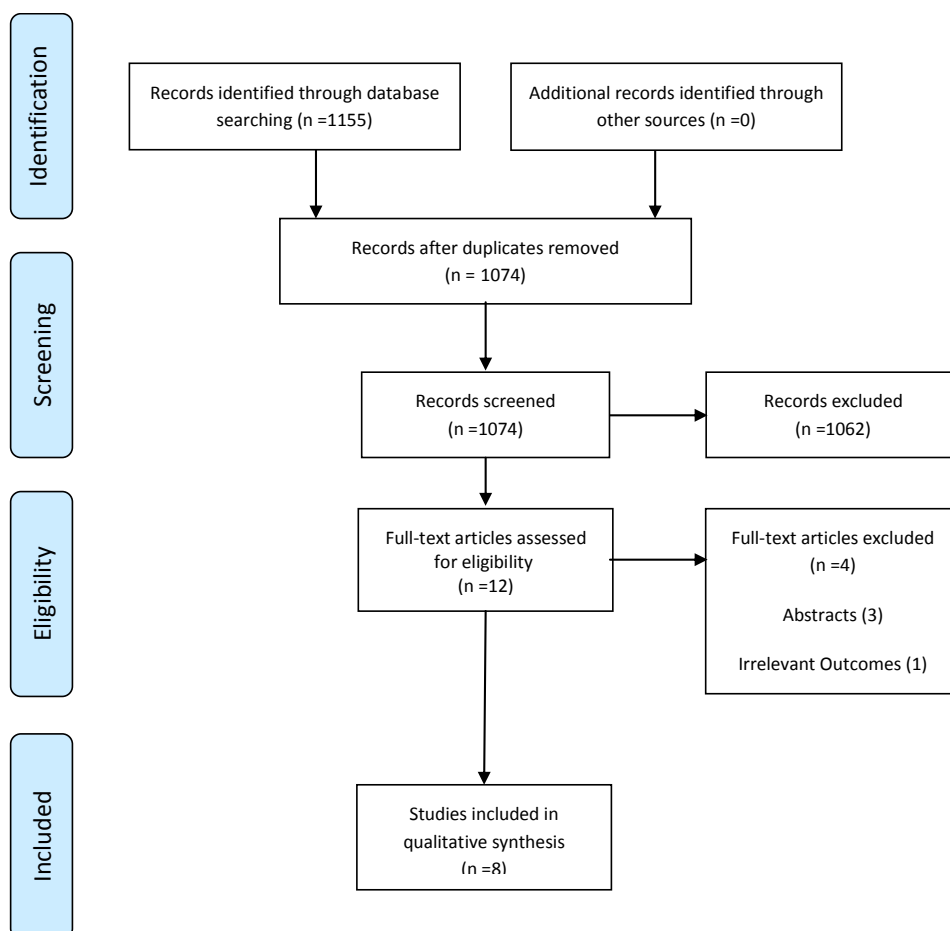


Fig. 1. PRISMA Flow diagram of literature review process

Table 1. Key characteristics of included economic evaluations

Author, Year, Country	Type of economic evaluation	Perspective	Time horizon	Costs (types of costs, sources of cost data)	Type of effects	Discount rates (costs, effects)	Type of sensitivity analysis	Willing-To-Pay Threshold	Industry funding
Alvarado et al, 2013, USA (20)	CUA, Model based, Markov model	societal	10 years	Reimbursement, published data	QALYs	3%, 3%	One-way, two-way, scenario analysis	US \$75,000 per QALYs gained	NR
Deshmukh et al, 2017, USA (21)	CUA Model based, Markov model	societal and health care sector	lifetime	Direct medical care costs, from the 2016 Medicare Physician Fee Schedule and Outpatient Prospective Payment System: indirect care, routine follow-up, and metastatic care costs from the literature	QALYs	3%, 3%	Deterministic (one-way and two-way)and probabilistic	US\$50 000 and US\$100 000 per QALYs gained	No
Kamenský et al, 2019, Czech (26)	CUA, Model based, Markov model	healthcare payer	40 years	direct costs using calculation	QALYs	3.5%, 3.5%	One way	1.213 million CZK	NR
Patel et al, 2017, USA (22)	CUA, Model based, Markov model	healthcare payer	lifetime	direct costs using Medicare reimbursement and published data	QALYs,	3%, 3%	One-way	US \$50,000 per QALYs gained	iCAD
Picot et al, 2015, UK (8)	CUA Model based, Markov model	healthcare payer (NHS and PSS)	40 years	Real cost	QALYs	3.5%, 3.5%	One-way, scenario analysis and probabilistic	£20,000 and £30,000 per QALYs	No
Shah et al, 2014, USA (23)	CUA NR, analyses were based on reimbursement models	Societal	NR, assumed to be 10 years	Direct and indirect (nonmedical) costs: Reimbursement	QALYs	not reported	No	NR	NR
Vaidya et al, 2017, UK (24)	CUA, Model based, Markov model	National Health Service (NHS)	10 years	Intervention costs, costs of being disease free, local recurrence and distant recurrence; expert opinion, NHS reference costs, published data	QALYs	3.5%, 3.5%	One-way, probabilistic	0.00	Carl-Zeiss Meditec AG
Vaidya et al, 2016, UK (25)	CUA Trial based using patient-level data from the TARGIT-A trial	healthcare payer (NHS and PSS)	5 years	Using resource use and event data collected prospectively in the trial, published sources	QALYs	3.5%, 3.5%	deterministic	£20,000–£30,000 per QALYs	Carl Zeiss

CUA indicates Cost-Utility Analysis; NHS, National Health Service; NR, Not Reported; PSS, personal social services; QALYs, Quality-Adjusted Life Years; TARGIT-A, TARGeted Intraoperative radioTherapy Alone trial.

Table 2. Quality of reporting of included studies using CHEERS checklist

Section/item	Item No	Vaidya et al, 2017 (24)	Alvarado et al, 2013 (20)	Picot et al, 2015 (8)	Shah et al, 2014 (23)	Patel et al, 2017 (22)	Kamenský et al, 2019 (26)	Vaidya et al, 2016 (25)	Deshmukh et al, 2017 (21)
Title and abstract									
Title	1	Part	Part	Part	Part	Yes	Part	Yes	Yes
Abstract	2	Part	Part	Yes	Part	Part	Part	Part	Yes
Introduction									
Background and objectives	3	Yes	Yes	Yes	Yes	Yes	Part	Yes	Yes
Methods									
Target population and subgroups	4	Yes	Yes	Yes	Part	Yes	No	Yes	Yes
Setting and location	5	Yes	Part	Yes	No	Part	No	Part	Yes
Study perspective	6	Yes	Yes	Yes	Part	Yes	Part	Yes	Yes
Comparators	7	Yes	Yes	Yes	Part	Yes	Part	Yes	Yes
Time horizon	8	Yes	Part	Yes	No	Part	Part	Yes	Yes
Discount rate	9	Yes	Yes	Yes	No	Yes	Part	Yes	Yes
Choice of health outcomes	10	Yes	Part	Yes	Part	Yes	Part	Yes	Yes
Measurement of effectiveness	11a	NA	NA	NA	Part	NA	NA	Yes	NA
	11b	Yes	Part	Yes	NA	Yes	Part	NA	Yes
Measurement and valuation of preference based outcomes	12	Yes	Part	Yes	Part	Na	Part	Yes	Yes
Estimating resources and costs	13a	NA	NA	NA	Part	NA	NA	Yes	NA
	13b	Yes	Part	Yes	NA	Part	No	NA	Yes
Currency, price date, and conversion	14	Part	Part	Part	No	Part	No	Part	Yes
Choice of model	15	Part	Part	Yes	No	Part	Part	Part	Yes
Assumptions	16	Yes	Yes	Yes	Part	Yes	No	Part	Yes
Analytical methods	17	Yes	Yes	Yes	No	Yes	No	Yes	Yes
Results									
Study parameters	18	Yes	Yes	Yes	Part	Yes	Part	Part	Yes
Incremental costs and outcomes	19	Yes	Yes	Yes	Part	Yes	Part	Yes	Yes
Characterising uncertainty	20a	NA	NA	NA	No	NA	NA	No	NA
	20b	Yes	Yes	Yes	NA	Yes	Part	NA	Yes
Characterising heterogeneity	21	Part	No	Yes	No	No	No	No	Yes
Discussion									
Study findings, limitations, generalisability, and current knowledge	22	Yes	Part	Yes	Part	Yes	Part	Yes	Yes
Other									
Source of funding	23	Yes	No	Yes	No	Yes	No	Yes	Yes
Conflicts of interest	24	Yes	Yes	No	Yes	Yes	No	Yes	No
CHEERS Quality Score Out of 24 Points		21	16.5	22	8	19	7	19	23

CHEERS Consolidated Health Economic Evaluation Reporting Standards, *NA* not applicable, *No* not reported, *Part* partially reported, *Yes* reported

Cost-effectiveness analysis of IORT

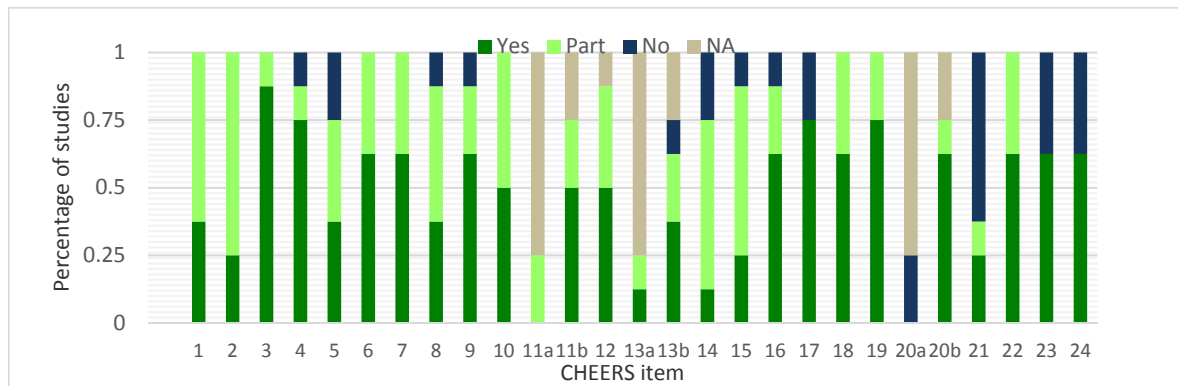


Fig. 2. Quality of reporting of included studies per items of the CHEERS checklist. **CHEERS** Consolidated Health Economic Evaluation Reporting Standards, **NA** not applicable, **No** not reported, **Part** partially reported, **Yes** reported

Table 3. Results of cost-effectiveness analyses

Study	Population	Interventions	Base-case results	IORT associated with better health outcomes?	IORT associated with more expensive?	The base case ICER	Results of sensitivity analysis	Conclusions
Vaidya et al (24)	A hypothetical cohort of patients with early breast cancer based on the published health state transition probability data from the TARGIT-A trial	IORT versus EBRT(15 fractions)	Costs: IORT £12,455 EBRT£13,280 QALY: IORT 8.15; EBRT 7.97	Yes	No	EBRT dominated	TARGIT IORT was dominant strategy in all parameter variations. In the PSA results were robust over a range model parameters. Also, TARGIT-IORT was cost saving in 98% iterations. IORT was cost-effective at zero thresholds of WTP.	The TARGIT-IORT is a dominant strategy over EBRT, being less costly and producing higher QALY.
Patel et al (22)	All women (55 year old females) were initially treated with breast conserving surgery (BCS) and followed by either IORT or 6 weeks of EBRT	IORT versus 6-week WB-EBRT	Costs: IORT \$53,179; 6-week WB-EBRT \$63,828 QALY: IORT 17.86; 6-week WB-EBRT 17.06	Yes	No	6-week WB-EBRT dominated	The findings was most sensitive to the probabilities of recurrent cancer and death for both IORT and EBRT	IORT was the dominant strategy(less costly, more QALYs), and results in the highest NMB (\$839,815 vs. \$789,092) and a lower cost per QALY compared to EBRT (\$3039 vs. \$3741).

CUA indicates Cost-Utility Analysis; **EBRT**, External Beam Radiation Therapy; **ELIOT**, Electron Intraoperative Radiotherapy Trial; **ER+**, Estrogen Receptor Positive; **ICER**, Incremental Cost-Effectiveness Ratio; **IORT**, Intraoperative Radiation Therapy; **NMB**, Net Monetary Benefit; **QALYs**, Quality-Adjusted Life Years; **TARGIT-A**, TARGeted Intraoperative radioTherapy Alone trial; **WB**, Whole Breast

Table 3. Ctd

Study	Population	Interventions	Base-case results	IORT associated with better health outcomes?	IORT associated with more expensive?	The base case ICER	Results of sensitivity analysis	Conclusions
Kamenský et al (26)	based on the TARGIT-A pragmatic randomized controlled trial	IORT versus 6-week WB-EBRT	Costs: IORT CZK 47,585; 6-week WB-EBRT CZK 62,784 QALY: IORT 14.269; 6-week WB-EBRT 14.553	No	No	53,483 (CZK saved/QALY lost)	The results of the sensitivity analysis are consistent with the results of the baseline scenario.	The ICER ratio of the IORT was below the threshold, and therefore did not meet the criteria for adoption of the new technology
Alvarado et al (20)	Women aged ≥ 55 years with early breast cancer defined as stage I-IIA ER+ included in TARGIT-A trial	IORT versus 6-week WB-EBRT	Costs: IORT \$28,879; 6-week WB-EBRT \$34,070 QALY: IORT 7.66020; 6-week WB-EBRT 7.65994	Yes	No	6-week WB-EBRT dominated	The model was most sensitive to health state utilities and local and distant recurrence rates.	IORT dominates WB-EBRT. The ICER showed that IORT dominated WB-EBRT by being both cheaper and more clinically effective. IORT is the preferred strategy except when the 10-year LRR of IORT is high (3.11 %) or the proportion receiving EBRT after IORT is high (24 %).
Deshmukh et al (21)	Women with an age range of 45 to 75 years treated with BCS for stage I/II breast cancer	IORT versus 3-week WB-EBRT versus 6-week WB-EBRT	Societal perspective: Costs: IORT; \$42,410; 3-week WB-EBRT \$47,486; 6-week WB-EBRT \$50,981 QALY: IORT 12.1764; 3-week WB-EBRT 12.4745; 6-week WB-EBRT 12.2929 Health care sector perspective: Costs: IORT; \$42,345; 3-week WB-EBRT \$46,783; 6-week WB-EBRT \$49,433 QALY: IORT 12.1764; 3-week WB-EBRT 12.4745; 6-week WB-EBRT 12.2929	No	No	6-week WB-EBRT dominated. ICER for 3-week WB-EBRT versus IORT: Societal : \$17,024 per QALY Health care sector: \$14,886 per QALY	The ICER was most sensitive to the probability of metastasis after treatment and treatment cost of 3-week WB-EBRT and IORT	3-week WB-EBRT was cost-effective compared with 6-week WB-EBRT and IORT. The probability that 3-week WB-EBRT was cost-effective was 75% and 80% at willingness-to-pay thresholds of \$50 000 per QALY and \$100 000 per QALY, respectively.

Table 3. Ctd

Study	Population	Interventions	Base-case results	IORT associated with better health outcomes?	IORT associated with more expensive?	The base case ICER	Results of sensitivity analysis	Conclusions
Picot et al (8)	Patient population in the pre-pathology stratum of the TARGIT-A trial.	IORT versus WB-EBRT (15 fractions)	Costs: £2,227 IORT; £2,368 WB-EBRT QALY: IORT 11.241; WB-EBRT 11.329	No	No	1596(£ saved/QALY lost)	The model were most sensitive to the probability of any other recurrence for WB-EBRT and IORT, the beta coefficient for the time to local recurrence (IORT) and the probability of death from breast cancer (IORT).	IORT was not cost-effective compared with WB-EBRT at the WTP threshold of £20,000 per QALY as the cost saved per QALY lost was less than £20,000.
Shah et al (23)	TARGIT-A trial: women with early-breast cancer , ≥ 45 years	IORT versus 6-weekWB-EBRT	Reimbursement costs ranges: IORT \$3,094 to \$10,179; WB-EBRT \$11,726 to \$13,743 QALY: IORT 9.04; WB-EBRT 9.08	No	Yes	\$89,234 to \$108,735 cost per QALY for WB-EBRT versus IORT depending on the difference in whole-breast irradiation rates	-	INTRABEAM IORT was a cost-saving option compared with WB-EBRT, but when other medical and non-medical costs were included, WB-EBRT showed a cost-effective option compared with IORT.
Vaidya et al (25)	817 patients randomized in the 'earliest cohort' in the prepathology stratum of the TARGIT-A trial	IORT versus EBRT(15 fractions)	Incremental costs (£),IORT vs. EBRT: -685 QALYs gained, IORT vs. EBRT: 0.034	Yes	No	6-week WB-EBRT dominated	In the deterministic sensitivity analyses the probability that IORT was cost-effective at a maximum willingness to pay for a QALY of £20,000 and £30,000 was > 0.75 and > 0.80 in every case respectively.	IORT was less costly than EBRT, with similar QALYs, and a positive incremental net monetary benefit and had a probability of > 90% of being cost-effective.

CUA indicates Cost-Utility Analysis; EBRT, External Beam Radiation Therapy; ELIOT, Electron Intraoperative Radiotherapy Trial; ER+, Estrogen Receptor Positive; ICER, Incremental Cost-Effectiveness Ratio; IORT, Intraoperative Radiation Therapy; NMB, Net Monetary Benefit; QALYs, Quality-Adjusted Life Years; TARGIT-A, TARGeted Intraoperative radioTherapy Alone trial; WB, Whole Breast

Results of Cost-Effectiveness Analysis

The results of the eight full economic evaluation studies included in this systematic review are summarized in Table 3. In four studies, which took place in the United States and the United Kingdom, IORT was the dominant option (20, 22, 24, 25). In all four studies, this technology was associated with lower costs and higher effectiveness than conventional radiotherapy. These studies were conducted from different perspectives and time horizons. Vaida et al. (25) assessed the cost-utility of TARGIT-IORT during lumpectomy compared with EBRT (15 fractions) in the prepathology stratum of the TARGIT-A trial. The analysis took the UK NHS and personal social services (PSS) perspective and a time horizon of 5 years. The study found that IORT was less costly than EBRT (mean incremental cost –£685) and resulted in slightly more QALYs than EBRT (mean QALYs gained 0.034). The difference in costs between the two groups was statistically significant but the difference in QALYs was not. IORT had a positive incremental net monetary benefit that was borderline statistically significantly different from zero and had a probability of > 90% of being cost-effective. The study concluded that using IORT routinely instead of EBRT in eligible patients may be a potential budget saving to the NHS (around £8–9.1 million each year). Vaida et al. (24) performed a cost-utility analysis using decision-analytic modeling for the UK setting and National Health Service (NHS healthcare payer's perspective) for a time horizon of 10 years. They found that in the base case analysis, TARGIT-IORT was the dominant strategy over EBRT, yielding higher QALY gain at a lower cost than EBRT. The results were robust to one-way and probabilistic sensitivity analyses. Moreover, based on probabilistic analysis, TARGIT-IORT had a 98% chance of being cost-effective at zero WTP. Alvarado et al. (20) reported a full economic evaluation study based on the US health-care system by developing a Markov decision model to assess the cost-effectiveness of IORT (INTRABEAM) compared with WB-EBRT, based on the trial results of the TARGIT-A. The analysis was performed over a 10-year time horizon and from a societal perspective. The study concluded that single-dose IORT was the dominant, more cost-effective strategy that provides greater QALYs at a decreased cost compared with 6-week WB-EBRT. The model was most sensitive to health state utilities and local and distant recurrence rates. IORT was always preferred, and in most cases, the dominant strategy across all sensitivity analyses. In all of the probability and rate sensitivity analyses, the ICER for WB-EBRT was significantly greater than the society's willingness-to-pay of \$75,000/QALY. In addition, the scenario analysis showed that IORT was the dominant strategy compared with a 3-week accelerated WB-EBRT schedule of 16 fractions in terms of both QALYs and life expectancy. In this study, a probabilistic sensitivity analysis (PSA) was not conducted. Patel et al. (22) used a Markov model to assess the cost-effectiveness of IORT versus a 6-week WB-EBRT in treating early-stage (stage I–IIA/IIB) breast cancer over the life of the patients for the USA setting from the healthcare payer and found that IORT was the dominant (less costly with greater QALYs) versus EBRT and at a willingness to pay of

\$50,000 for each additional QALY, the net monetary benefit demonstrated that IORT was the most cost-effective option. The model used in their study was sensitive to the probabilities of recurrent cancer and death for both IORT and EBRT. The study concluded that IORT was the more cost-effective option (lower cost with improved QALYs) for use in patients with early-stage ER+ breast cancer.

In three studies, Shah et al., Kamensky et al., and Picot et al., the dominant option was conventional radiotherapy (8, 23, 26). In these studies, IORT also was associated with fewer costs, but its effectiveness was lower than that of conventional radiotherapy. Shah et al. (23) carried out an economic evaluation based on TARGIT-A and the Electron Intraoperative Radiotherapy (ELIOT) trial and a societal perspective, including both direct and indirect costs, for a time horizon of 10 years in the USA. They found that EBRT was a more cost-effective treatment compared to IORT. In the study, the costs per QALY for WB-EBRT compared with INTRABEAM IORT ranged from \$89,234 to \$108,735 depending on the difference in whole-breast irradiation rates. The study concluded that IORT is a potential cost-saving in the management of early-stage breast cancer. But, WBI represents a cost-effective option and remains the standard of care. Using a Markov model, Kamensky et al. (26) assessed cost-utility from the Czech healthcare system perspective. The study found the ICER value was CZK 53 483 saved per 1 QALY lost. The results of the sensitivity analysis were consistent with the results of the baseline scenario. Then, in the basic scenario, IORT was less expensive but less effective than EBRT. The ICER of the IORT versus EBRT was below the threshold of 1.213 million CZK and therefore, in this study IORT was found not to be cost-effective for patients with early breast cancer. Picot et al. in their study (8) assessed the cost-effectiveness of IORT compared with WB-EBRT for early breast cancer from the NHS perspective and a lifetime (40-year) horizon in the UK. The study found IORT to be less costly but also less effective than WB-EBRT. The base-case ICER to replace WB-EBRT with intraoperative radiation therapy was £1596 saved per QALY lost. Therefore, IORT was not cost-effective at a willingness-to-pay (WTP) threshold of £20,000 per QALY. The PSA indicated that WB-EBRT at the £20,000 and £30,000 WTP thresholds and IORT at thresholds of around £5000 per QALY or less has a greater probability than each other of being cost-effective.

In the study of Deshmukh et al. (21), which was conducted with two social and health care perspectives, 3-week radiotherapy was the dominant option as compared to 6-week radiotherapy IORT. In this study, 6-week radiotherapy was a dominated option and IORT was less costly and less effective than 3-week radiotherapy. In the last four studies, IORT was not cost-effective on the basis of the willingness to pay thresholds, but these studies pointed to the potential for the cost-effectiveness of IORT (8, 21, 23, 26). In these studies, the money saved per QALY lost due to the replacement of IORT with conventional radiotherapy was used. Similar results were obtained in the study of Kamensky et al. and Picot et al., which used the same Markov models (8, 26). Finally, there was also heterogeneity in terms of the thresholds of willingness to pay, the structure

of models and their assumptions among the included studies, even in studies conducted in the United States or the United Kingdom.

Drivers of Cost-Effectiveness

One-way sensitivity analyses were reported in 7 out of 8 included studies. Yet, numerous studies did not perform one-way sensitivity analyses on all model parameters or only conducted one-way sensitivity or scenario analyses on a few input parameters. Among the eight included studies, the model was most sensitive to probabilities of recurrent cancer and death for both IORT and EBRT (22), health state utilities and local and distant recurrence rates (20), the probability of metastasis after treatment, and treatment cost of HF-WBI and IORT (21), and the probability of any other recurrence assumed for WB-EBRT and INTRABEAM, the beta coefficient for the time to local recurrence (INTRABEAM) and the probability of death from breast cancer (INTRABEAM) (8). In the remaining studies, model outputs were robust to one-way and probabilistic sensitivity analyses.

Discussion

In this study, we reviewed eight full economic evaluation IORT in comparison with conventional radiotherapy in adjunct management of early breast cancer. The quality of the studies based on the average reporting quality score of the 8 articles reviewed by the Cheers checklist was moderate (17/24). The cost-effectiveness results of the IORT showed that this technology is located in two areas in the cost-effectiveness plane (more effective, less costly, and less effective and less costly). However, in all studies, IORT reduced costs in comparison with conventional and even hypofractionation WB-EBRT, but this reduction was trivial in the Picot study. On the other hand, in three studies, QALYs were improved with IORT compared to the WBI. In other studies, QALYs were reduced for IORT compared to the WBI. In terms of cost-effectiveness results, we can say that the current evidence is scattered, and the number of studies conducted is low. In general, by reviewing eight economic assessments, there can be no definitive answer to the cost-effectiveness of IORT, but this evidence suggests that IORT can be a cost-effective alternative to early breast cancer treatment by reducing therapeutic costs. So that the cost of IORT in all studies was lower than the cost of EBRT, and this technology provided some cost savings compared to that. Similar findings are also reported in other studies (27). Including other social costs and travel costs will further add to the cost-effectiveness of the IORT (11). Also, the results of these studies showed that the QALYs differences between IORT and EBRT are low.

In the review study, the results should be interpreted with caution for several reasons. There is heterogeneity in terms of perspectives, time horizons, model assumptions, and the settings of studies. Most studies were conducted in the United States and Canada. Various cost-effectiveness thresholds have been used in different studies. Sources of financing for most studies (5.7 study) were the industry or not mentioned. The evidence shows that industry-funded studies are more likely to report the favorable results of a

cost-effectiveness analysis (28).

Sources of effectiveness data for economic models for the majority of included studies are based on efficacy data from TARGIT or Elliot trials that may cause a risk of bias. It seems that, as mentioned in the findings, the effectiveness outcomes in the included studies are influenced by these parameters and can affect the results of the studies (24).

This study has several strengths. First, the present study is one of the first systematic reviews of cost-effectiveness evidence of IORT compared with conventional radiotherapy in early breast cancer. Second, in this study, the quality of the reporting of the studied studies was evaluated, and the strengths and weaknesses of these studies were shown. Identifying the weaknesses of present literature can help to improve future cost-effectiveness analysis studies of these technologies. Third, the present study used the principles of the PRISMA statement for conducting research and reporting.

This study has some limitations. Posters or reports that only had only abstracts and without full text were removed because there was not enough information available to assess reporting quality. Also, studies with non-English full text were not included in the review. Another limitation was that given the fact that these studies were conducted in different countries, it was difficult to compare their ICER results because the thresholds for their willingness to pay were different. Finally, it's worth noting that poor reporting does not necessarily mean poor quality of a study. In our review, we did not assess the methodological quality of studies. In this context, the use of assessment tools such as the Philips checklist (29) can be useful. Finally, we identified cost-effectiveness drivers based on reported findings of sensitivity analysis in the included studies, and we did not conduct additional analysis for the determination of the mentioned drivers.

There is a need for future economic evaluation studies in the field. In future studies, the best practice guidelines for conducting and reporting economic evaluations should be used to ensure that all elements and assumptions in these studies are adequately and transparently reported. Future economic modeling studies should also take into account all the costs and outcomes associated with technology, and from the societal perspective and the right time horizons. In addition, In order to address the uncertainty surrounding the model assumptions, there should be used comprehensive, relevant types of sensitivity analyses to address all principal types of uncertainty including methodological, structural, parameter and patient population-related uncertainty (30).

Conclusion

We identified eight cost-effectiveness analyses of IORT versus EBRT for early breast cancer published to March 2019. This review shows the need for better reporting and more attention to the model assumptions and structural uncertainty, as well as the more commonly recognized parameter uncertainty by using diverse kinds of sensitivity analyses. The results of this study show that IORT can be a potential cost-saving strategy to the health systems for the adjuvant treatment of early breast cancer if the technology was carried out routinely in eligible patients. However,

these results should be interpreted with caution because of the heterogeneity of studies and possible publication bias.

Conflict of Interests

The authors declare that they have no competing interests.

References

- Fitzmaurice C, Akinyemiju TF, Al Lami FH, Alam T, Alizadeh-Navaei R, Allen C, et al. Global, regional, and national cancer incidence, mortality, years of life lost, years lived with disability, and disability-adjusted life-years for 29 cancer groups, 1990 to 2016: a systematic analysis for the global burden of disease study. *JAMA Oncol*. 2018;4(11):1553-68.
- Gold HT, Hayes MK. Cost effectiveness of new breast cancer radiotherapy technologies in diverse populations. *Breast Cancer Res Treat*. 2012;136(1):221-9.
- Zhang L, Zhou Z, Mei X, Yang Z, Ma J, Chen X, et al. Intraoperative radiotherapy versus whole-breast external beam radiotherapy in early-stage breast cancer: a systematic review and meta-analysis. *Medicine*. 2015;94(27).
- Lai HW, Liu LC, Ouyang F, Yao CC, Jan HC, Chang YH, et al. Multi-center study on patient selection for and the oncologic safety of intraoperative radiotherapy (IORT) with the Xofigo Axxent® eBx® System for the management of early stage breast cancer in Taiwan. *PLoS One*. 2017;12(11):e0185876.
- Group EBCTC. Effect of radiotherapy after breast-conserving surgery on 10-year recurrence and 15-year breast cancer death: meta-analysis of individual patient data for 10 801 women in 17 randomised trials. *Lancet*. 2011;378(9804):1707-16.
- Group EBCTC. Effects of radiotherapy and of differences in the extent of surgery for early breast cancer on local recurrence and 15-year survival: an overview of the randomised trials. *Lancet*. 2005;366(9503):2087-106.
- Mashov R, Tabenkin H. [How family physicians estimate their knowledge and skills in musculoskeletal problems?]. *Harefuah*. 2011;150(3):242-5, 304.
- Picot J, Copley V, Colquitt JL, Kalita N, Hartwell D, Bryant J. The INTRABEAM(R) Photon Radiotherapy System for the adjuvant treatment of early breast cancer: a systematic review and economic evaluation. *Health Technol Assess (Winchester, England)*. 2015;19(69):1-190.
- Vaidya JS, Wenz F, Bulsara M, Tobias JS, Joseph DJ, Keshtgar M, et al. Risk-adapted targeted intraoperative radiotherapy versus whole-breast radiotherapy for breast cancer: 5-year results for local control and overall survival from the TARGIT-A randomised trial. *Lancet*. 2014;383(9917):603-13.
- Vaidya JS, Bulsara M, Wenz F, Joseph D, Saunders C, Massarut S, et al. Pride, prejudice, or science: Attitudes towards the results of the TARGIT-A trial of targeted intraoperative radiation therapy for breast cancer. *Int J Radiat Oncol Biol Phys*. 2015;92(3):491-7.
- Bargallo-Rocha JE, Soto-Perez-de-Celis E, Picó-Guzmán FJ, Quintero-Rodríguez CE, Almog D, Santiago-Concha G, et al. The impact of the use of intraoperative radiotherapy on costs, travel time and distance for women with breast cancer in the Mexico City Metropolitan Area. *J Surg Oncol*. 2017;116(6):683-9.
- Husereau D, Drummond M, Petrou S, Carswell C, Moher D, Greenberg D, et al. Consolidated health economic evaluation reporting standards (CHEERS) statement. *Cost Eff Resour Alloc*. 2013;11(1):6.
- Husereau D, Drummond M, Petrou S, Carswell C, Moher D, Greenberg D, et al. Consolidated health economic evaluation reporting standards (CHEERS)—explanation and elaboration: a report of the ISPOR health economic evaluation publication guidelines good reporting practices task force. *Value Health*. 2013;16(2):231-50.
- Hiligsmann M, Evers SM, Sedrine WB, Kanis JA, Ramaekers B, Reginster JY, et al. A systematic review of cost-effectiveness analyses of drugs for postmenopausal osteoporosis. *Pharmacoeconomics*. 2015;33(3):205-24.
- Moher D, Liberati A, Tetzlaff J, Altman DG. Preferred reporting items for systematic reviews and meta-analyses: the PRISMA statement. *Ann Intern Med*. 2009;151(4):264-9.
- Soto-Molina H, Juarez YE, Sanchez-Trejo K. Economic evaluation of the mobile electron accelerator for intraoperative radiotherapy in patients with breast cancer. *Value Health*. 2018;21:S33-S.
- Vaidya A, Vaidya P, Both B. Cost-utility analysis (cua) of targeted intraoperative radiotherapy alone (target-a) in the Brazilian early breast cancer patients. *Value Health*. 2017;20(9):A854-A.
- Vaidya A, Vaidya P, Both B, Brew-Graves C, Vaidya J. Cost Effectiveness Analysis of Targeted Intraoperative Radiotherapy Alone (TARGIT-A) in Early Breast Cancer Patients. *Value Health*. 2014;17(7):A640.
- Esserman LJ, Alvarado MD, Howe RJ, Mohan AJ, Harrison B, Park C, et al. Application of a decision analytic framework for adoption of clinical trial results: are the data regarding TARGIT-A IORT ready for prime time? *Breast Cancer Res Treat*. 2014;144(2):371-8.
- Alvarado MD, Mohan AJ, Esserman LJ, Park CC, Harrison BL, Howe RJ, et al. Cost-Effectiveness Analysis of Intraoperative Radiation Therapy for Early-Stage Breast Cancer. *Ann Surg Oncol*. 2013;20(9):2873-80.
- Deshmukh AA, Shirvani SM, Lal L, Swint JM, Cantor SB, Smith BD, et al. Cost-effectiveness Analysis Comparing Conventional, Hypofractionated, and Intraoperative Radiotherapy for Early-Stage Breast Cancer. *J. Natl. Cancer Inst*. 2017;109(11).
- Patel R, Ivanov O, Voigt J. Lifetime cost-effectiveness analysis of intraoperative radiation therapy versus external beam radiation therapy for early stage breast cancer. *Cost Eff Resour Alloc*. 2017;15:22.
- Shah C, Badiyan S, Khwaja S, Shah H, Chitalia A, Nanayati A, et al. Evaluating Radiotherapy Options in Breast Cancer: Does Intraoperative Radiotherapy Represent the Most Cost-Efficacious Option? *Clin Breast Cancer*. 2014;14(2):141-6.
- Vaidya A, Vaidya P, Both B, Brew-Graves C, Bulsara M, Vaidya JS. Health economics of targeted intraoperative radiotherapy (TARGIT-IORT) for early breast cancer: a cost-effectiveness analysis in the United Kingdom. *BMJ Open*. 2017;7(8):e014944.
- Vaidya JS, Wenz F, Bulsara M, Tobias JS, Joseph DJ, Saunders C, et al. An international randomised controlled trial to compare TARGIT Intraoperative radiotherapy (TARGIT) with conventional postoperative radiotherapy after breast-conserving surgery for women with early-stage breast cancer (the TARGIT-A trial). *Health Technol Assess*. 2016;20(73):1-188.
- Kamensky V, Donin G, Burianova V, Gajdos O, Rogalewicz V, Kubatova I, et al. Cost-Effectiveness Analysis of Intrabeam System Introduction to the Czech Healthcare System Environment. In: Lhotska L, Sukupova L, Lackovic I, Ibbott GS, editors. *World Congress on Medical Physics and Biomedical Engineering 2018, Vol 2. IFMBE Proceedings*. 682019. p. 107-12.
- Intrabeam radiotherapy system for adjuvant treatment of early breast cancer The National Institute for Health and Care Excellence: The National Institute for Health and Care Excellence; 2018. Available from: <https://www.nice.org.uk/guidance/ta501/resources/intrabeam-radiotherapy-system-for-adjuvant-treatment-of-early-breast-cancer-pdf-82606714503109>.
- Bell CM, Urbach DR, Ray JG, Bayoumi A, Rosen AB, Greenberg D, et al. Bias in published cost effectiveness studies: systematic review. *BMJ*. 2006;332(7543):699-703.
- Philips Z, Bojke L, Sculpher M, Claxton K, Golder S. Good practice guidelines for decision-analytic modelling in health technology assessment. *Pharmacoeconomics*. 2006;24(4):355-71.
- Moloney E, O'Connor J, Craig D, Robalino S, Chrysos A, Javanbakht M, et al. Systematic Review of Economic Models Used to Compare Techniques for Detecting Peripheral Arterial Disease. *Pharmacoeconomics-open*. 2019;3(1):21-30.

Appendix 1. Search strategies and results for selected databases

Database: PubMed

Date conducted: June 25, 2020

Search strategy:

(((((("breast neoplasms"[MeSH Terms] OR ("breast"[All Fields] AND "neoplasms"[All Fields]) OR "breast neoplasms"[All Fields] OR ("breast"[All Fields] AND "cancer"[All Fields]) OR "breast cancer"[All Fields]) OR ("breast neoplasms"[MeSH Terms] OR ("breast"[All Fields] AND "neoplasms"[All Fields]) OR "breast neoplasms"[All Fields] OR ("breast"[All Fields] AND "tumour"[All Fields]) OR "breast tumour"[All Fields])) OR ("breast neoplasms"[MeSH Terms] OR ("breast"[All Fields] AND "neoplasms"[All Fields]) OR "breast neoplasms"[All Fields] OR ("breast"[All Fields] AND "carcinoma"[All Fields]) OR "breast carcinoma"[All Fields])) OR ("breast neoplasms"[MeSH Terms] OR ("breast"[All Fields] AND "neoplasms"[All Fields]) OR "breast neoplasms"[All Fields])) OR "breast neoplasms"[MeSH Terms]) AND (((IORT[All Fields] OR INTRABEAM[All Fields]) OR ELIOT[All Fields]) OR TARGIT[All Fields]) OR (intraoperative[All Fields] AND ("radiotherapy"[Subheading] OR "radiotherapy"[All Fields] OR "radiotherapy"[MeSH Terms])))

Database: Web of Science

Date conducted: June 25, 2020

Search strategy:

TS=((breast tumour OR breast carcinoma OR breast neoplasms OR breast cancer OR "Breast Neoplasms") AND (intraoperative radiotherapy OR TARGIT OR ELIOT OR INTRABEAM)AND (cost* OR economic* OR "economic evaluation" OR "cost effectiveness" OR "cost-effectiveness" OR "cost utility" OR "cost-utility"))

Timespan: All years. Indexes: SCI-EXPANDED, SSCI, A&HCI, ESCI.

Database: Cochrane Central Register of Controlled Trials

Date conducted: June 25, 2020

Search strategy:

Search	Query
#1	MeSH descriptor: [Breast Neoplasms] explode all trees
#2	MeSH descriptor: [Radiotherapy, Adjuvant] explode all trees
#3	#1 and #2
#4	MeSH descriptor: [Cost-Benefit Analysis] explode all trees
#5	#3 and #4

Database: Embase

Date conducted: June 25, 2020

Search strategy:

('intraoperative radiotherapy'/exp OR 'intraoperative radiotherapy' OR iort OR targit OR eliot OR 'x ray generator'/exp OR 'x ray generator') AND ('cost benefit analysis'/exp OR 'cost benefit analysis' OR 'cost effectiveness analysis'/exp OR 'cost effectiveness analysis' OR 'cost utility analysis'/exp OR 'cost utility analysis' OR economic*:ab,ti)

Database: Scopus

Date conducted: June 25, 2020

Search strategy:

TITLE-ABS-KEY ("intraoperative radiotherapy" OR "intraoperative radiation therapy" OR TARGIT OR ELIOT OR INTRABEAM OR IORT) AND TITLE-ABS-KEY ("cost benefit analysis" OR "cost-benefit analysis" OR "cost effectiveness analysis" OR "cost-effectiveness analysis" OR "cost utility analysis" OR "cost-utility analysis" OR cost*OR economic*)