

Different role of MSLN and CA125 co-expression as a prognostic predictor between perihilar and distal bile duct carcinoma

YASUHIRO TAKIHATA¹, TAKAHIRO EINAMA¹, KAZUKI KOBAYASHI¹, TAKAFUMI SUZUKI¹,
NAOTO YONAMINE¹, IBUKI FUJINUMA¹, TAKAZUMI TSUNENARI¹, YOJI YAMAGISHI¹,
TOSHIMITSU IWASAKI¹, YOICHI MIYATA¹, EIJI SHINTO¹, SHO OGATA²,
HIRONORI TSUJIMOTO¹, HIDEKI UENO¹ and YOJI KISHI¹

Departments of ¹Surgery and ²Pathology and Laboratory Medicine,
National Defense Medical College, Tokorozawa, Saitama 359-8513, Japan

Received December 11, 2020; Accepted February 15, 2021

DOI: 10.3892/ol.2021.12675

Abstract. Recent studies have suggested that the interaction of mesothelin (MSLN) and cancer antigen 125 (CA125) enhances tumor metastases. The aim of the present study was to clarify the impact of MSLN and CA125 co-expression on the prognosis of patients with extrahepatic bile duct carcinoma (BDC). Tissue samples from patients who underwent surgical resection between 2007 and 2015 for perihilar or distal BDC were immunohistochemically examined. The expression levels of MSLN and CA125 in tumor cells were analyzed. The expression in <50% and ≥50% of the total tumor cells were defined as low- and high-level expression, respectively. Tissue samples were obtained from 31 patients with perihilar BDC and 43 patients with distal BDC. Lymph node metastases were associated with MSLN and CA125 co-expression in patients with perihilar BDC (P=0.002), while there was no association between lymph node metastasis and co-expression in patients with distal BDC (P=0.362). MSLN and CA125 co-expression was associated with a worse overall survival rate in patients with perihilar BDC (5-year overall survival rate, co-expression positive vs. negative, 24 vs. 63%; P=0.038). To the best of our knowledge, the present study is the first to report an association between co-expression of MSLN and CA125 with a poor prognosis in patients with perihilar BDC. The current findings suggested that the significance of co-expression differed according to the BDC location.

Introduction

Bile duct carcinoma (BDC) consists of heterogenous groups of neoplasia according to their location. Extrahepatic BDC has been divided into perihilar and distal BDC (1). The two subtypes are regarded as separate entities because of differences in their epidemiology, clinical management, and prognosis (2-5). However, the histopathological differences have not been clarified.

Mesothelin (MSLN) is a 40-kDa cell surface glycoprotein, which is expressed in normal mesothelial cells that line the surface of the pleura, pericardium, and peritoneum (6,7). Overexpression of MSLN in various types of malignant tumors, including malignant mesothelioma, ovarian cancer, and pancreatic cancer has been reported (8-11). The full-length human MSLN gene encodes primarily a 71-kDa precursor protein. It can be physiologically cleaved by several furin-like proteases into a membrane-bound 40-kDa C-terminal fragment and a 31-kDa N-terminal fragment, and the latter is secreted into the blood. The former fragment is MSLN, which is attached to the cell membrane through a glycosyl-phosphatidylinositol anchor (7,12).

MSLN is one of the binding partners of cancer antigen 125 (CA125) (13-15). Previous studies showed that heterotypic adhesion through the high affinity interaction between MSLN and CA125 could facilitate peritoneal metastases of ovarian cancer (13,15). Other studies (16,17) showed that expression of MSLN in patients with extrahepatic BDC and intrahepatic cholangiocellular carcinoma was associated with poor prognosis. However, no studies have evaluated the incidence of MSLN and CA125 co-expression in patients with extrahepatic BDC. The aim of this study was to evaluate the differences in the incidence of co-expression between perihilar and distal BDC patients and the impact of CA125 and MSLN expression on prognosis.

Materials and methods

Ethics approval and consent to participate. This study was performed in accordance with the Declaration of Helsinki and was approved by the institutional review board of the National

Correspondence to: Dr Takahiro Einama, Department of Surgery, National Defense Medical College, 3 Chome-2 Namiki, Tokorozawa, Saitama 359-8513, Japan
E-mail: einama0722@ndmc.ac.jp

Abbreviations: BDC, bile duct carcinoma; MSLN, mesothelin; CA125, cancer antigen 125

Key words: cholangiocarcinoma, BDC, MSLN, CA125

Defense Medical College (approval no. 4115). All patients agreed to participate in this study, and written informed consent was obtained from all patients.

Tumor specimens. Tissue samples taken from patients who underwent surgical resection for perihilar or distal BDC from January 2007 to December 2015 were immunohistochemically examined. Pathological T and N factors and Stage were recorded according to the 8th edition of the Union for International Cancer Control (UICC) staging (1).

Immunohistochemistry. Formalin-fixed paraffin-embedded tissue blocks were collected. Immunohistochemistry (IHC) was performed on tumor samples using monoclonal antibodies against MSLN (clone 5B2 diluted 1:50; Leica Biosystems Newcastle Ltd.) and CA125 (clone M11 Ready-to-Use; Agilent Technologies Inc.) at room temperature for 60 min. Next, samples were incubated with Histofine (Simple Stain MAX PO (MULTI); Nichirei Biosciences Inc.) at room temperature for 30 min. Specific antigen-antibody reactions were visualized with diaminobenzidine tetrahydrochloride and hydrogen peroxide (Liquid DAB+ Substrate Chromogen System; Agilent Technologies Inc.). Slides were counterstained with hematoxylin for 1.5 min, then rinsed gently in reagent quality water for 10 min.

Immunohistochemical evaluation. All histological assessments were performed on the tumor region of the specimen with magnification, x200. Each slide was independently evaluated by three observers (Y.T., Y.Y. and T.E.) who were blinded to the clinical outcomes. Discrepancies among the investigators were resolved by consensus using a multiheaded microscope. Immunostaining for MSLN and CA125 was evaluated for the proportion of tumor cells stained in each case. The levels of MSLN and CA125 expression were assessed as the number of stained tumor cells divided by the total number of tumor cells on the largest cross-sectioned slice of the tumor and were classified as follows: 0% to <50% and $\geq 50\%$ (Fig. 1). The proportional expression levels in the tumor, <50% and $\geq 50\%$, were defined as low- and high-level expression, respectively. We defined the positive co-expression as the expression of both MSLN and CA125 in $\geq 50\%$ of the tumor cells.

Statistical analysis. We used the Chi-squared (χ^2) test or Fisher's exact test to determine the association of MSLN and CA125 co-expression with clinicopathological data. All numerical data were compared by independent samples t-test. Survival curves of patients were drawn using the Kaplan-Meier method. Differences in survival curves were analyzed by the log-rank test. Statistical significance was defined as $P < 0.05$ for all analyses. Excel Statistics 2012[®] software package (SSRI) was used for statistical analyses.

Results

Specimen selection. Tissue samples were obtained from 31 patients with perihilar BDC and 43 patients with distal BDC. The patients' clinicopathological characteristics are summarized in Table I. There were no significant differences in the distribution of age, sex, incidence of lymph node

metastases, and proportion of patients who received adjuvant chemotherapy between the two groups. Conversely, the distribution of T category and stage, types of surgical procedure, and R status differed significantly.

MSLN and CA125 expression in perihilar or distal BDC. High-level expression of MSLN and CA125 was detected in 21 specimens (68%) and 18 specimens (58%), respectively, from perihilar BDC, and in 26 specimens (60%) and 28 specimens (65%), respectively, from distal BDC. Fisher's exact test indicated the association between these two expressions in perihilar BDC ($P=0.036$) and in distal BDC ($P=0.046$) (Fig. 2).

Tables II and III show the comparison of pathological features according to the expression of MSLN and CA125 in patients with perihilar and distal BDC, respectively. In the perihilar BDC group, lymph node metastases were more frequently observed in patients with MSLN high-level expression ($P=0.060$), CA125 high-level expression ($P=0.014$), and co-expression ($P=0.002$). Blood vessel permeation ($P=0.064$) and neural invasion ($P=0.064$) were more frequently observed in patients with high-level CA125 expression. In the distal BDC group, neural invasion was more frequently observed in patients with MSLN high-level expression ($P=0.055$) and CA125 high-level expression ($P=0.037$). However, co-expression of MSLN and CA125 was not associated with any of the evaluated clinicopathological factors.

Survival analyses. Fig. 3 shows survival curves of the patients with and without MSLN and CA125 co-expression. Overall survival was significantly different in the patients with perihilar BDC (5-year survival rate, co-expression negative vs. positive, 63 vs. 24%, $P=0.038$), while it was comparable in the patients with distal BDC (5-year survival rate, co-expression negative vs. co-expression positive, 56 vs. 46%, $P=0.726$).

Discussion

In this study, we demonstrated that high-level co-expression of MSLN and CA125 was observed in nearly half of the patients either with perihilar (48%) or distal BDC (47%). However, our results showed that co-expression was associated with lymph node metastases and worse prognosis only in the patients with perihilar BDC.

MSLN expression has been shown to promote tumorigenesis and metastasis via lymphatic invasion of cancer both *in vitro* and *in vivo* (18). Clinicopathologically, MSLN expression was associated with lymph node metastases in patients with gastric cancer (19) and colorectal cancer (20). To date, few studies have addressed MSLN expression in extrahepatic BDC. Kawamata *et al* (16) showed that MSLN high-level expression in extrahepatic BDC was associated with a high incidence of liver metastases and worse survival rates, while there was no association between MSLN expression and lymph node metastases. However, their study included BDC from various locations as follows: hilar, 16 cases; upper, 17 cases; middle, 20 cases; lower, 8 cases. We evaluated perihilar and distal BDC separately because they were different in the types of surgical procedure used or peritumor environment. In fact, our study showed that there is a difference in the association of MSLN or CA125 expression with clinicopathological features

Table I. Clinicopathological characteristics of 74 patients with perihilar (n=31) or distal (n=43) BDC.

Parameter	Total, n	Perihilar BDC	Distal BDC	P-value
Median age (range), years		72 (38-86)	70 (42-88)	0.654
Sex, n (%)				
Male	54	20 (37)	34 (63)	0.164
Female	20	11 (55)	9 (45)	
pT stage UICC, n (%)				
pT1-2	51	16 (31)	35 (69)	0.006
pT3-4	23	15 (65)	8 (35)	
pN stage UICC, n (%)				
pN0	27	11 (41)	16 (59)	0.879
pN1-2	47	20 (43)	27 (57)	
Pathological stage UICC, n (%)				
I-II	41	8 (20)	33 (80)	<0.001
III-IV	33	23 (70)	10 (30)	
Surgical procedure, n (%)				
Extended right or left hepatectomy ^a with bile duct resection	25	25 (100)	0 (0)	NC
Extrahepatic bile duct resection	1	1 (100)	0 (0)	
Subtotal stomach-preserving pancreaticoduodenectomy	37	1 (2)	36 (98)	
Hepatectomy and pancreaticoduodenectomy	11	4 (36)	7 (64)	
Residual tumor, n (%)				
R0	40	12 (30)	28 (70)	0.025
R1	34	19 (56)	15 (44)	
Recurrence, n (%)				
Yes	40	20 (50)	20 (50)	0.125
No	34	11 (32)	23 (68)	
Adjuvant chemotherapy, n (%)				
Yes	11	4 (36)	7 (64)	0.477
No	63	27 (43)	36 (57)	

^a≥3 segments. Data analyzed via Fisher's exact test (for parameters with expected values of <5 in >20% of cells) or χ^2 test or unpaired t-test (for age). BDC, bile duct carcinoma; UICC, Union for International Cancer Control; pT stage, pathological tumor stage; pN stage, pathological lymph node stage; NC, not calculated.

between perihilar and distal BDC. Our results suggested that biological features of BDC might differ between the two subgroups.

Some papers indicated the differences for lymph node metastasis between perihilar and distal BDC. Wang *et al* (21) reported that distant lymph node metastasis was commonly seen in perihilar BDC, not in distal BDC. Hasebe *et al* (22) reported that nodal tumors with more than 4 mitotic figures significantly increased the hazard ratios of tumor recurrence and initial distant organ metastasis in the perihilar portion. Moreover, Noji *et al* (23) showed that incidence of extra capsular lymph node involvement in perihilar BDC was significantly lower than in the distal BDC. These findings supported that lymph node metastasis showed different pathological features between the perihilar and distal BDC. In this study, co-expression of MSLN and CA125 was associated with

lymph node metastasis in perihilar BDC, not in distal BDC. These results suggested that the mechanism of lymph node metastasis might be different in perihilar and distal BDC.

A previous study showed that MSLN and CA125 co-expression was an independent predictor of poor survival in patients with pancreatic ductal adenocarcinoma (PDAC) (11). Shimizu *et al* (24) showed that there is an interaction between MSLN and CA125 by immunoprecipitation assay and revealed that they were observed only in infiltrating components of PDAC and increased at the invasion front by immunohistochemical analysis. Chen *et al* (25) demonstrated that the interaction of MSLN and CA125 markedly enhanced motility and invasion of pancreatic cancer cells via selective induction of matrix metalloproteinase (MMP)-7. Further, they reported that the MSLN-CA125 interaction might induce pancreatic cancer cell motility and invasion via a p38 MAPK-dependent pathway.

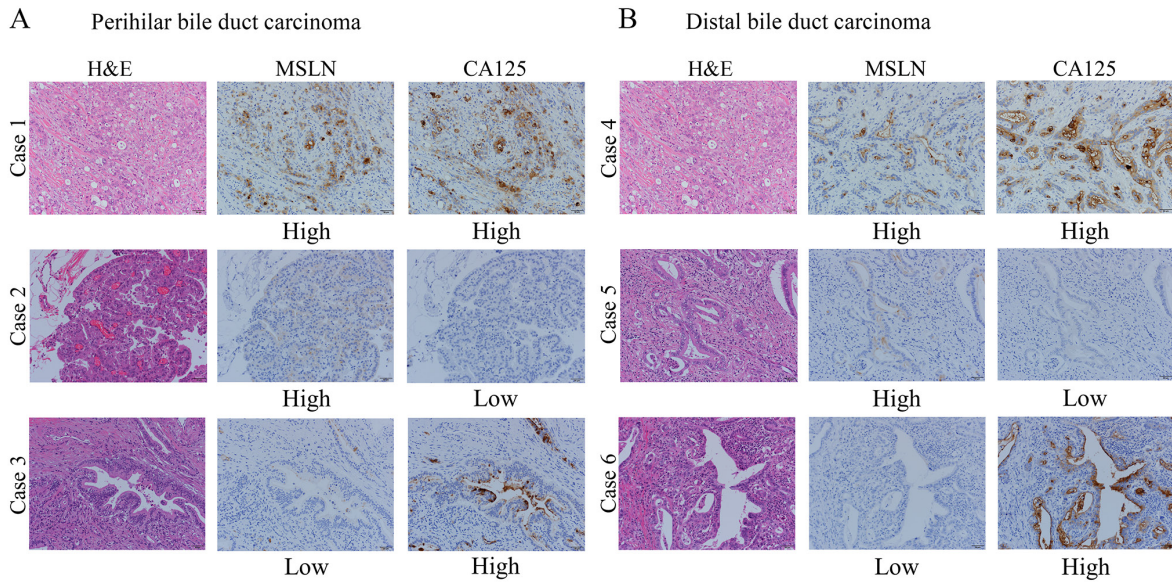


Figure 1. Representative cases of (A) perihilar or (B) distal bile duct carcinoma showing H&E staining, MSLN and CA125 expression. Cases 1 and 4 represent MSLN and CA125 high-level expression. Cases 2 and 5 represent MSLN high-level expression and CA125 low-level expression. Cases 3 and 6 represent MSLN low-level expression and CA125 high-level expression. Magnification, x200. H&E, hematoxylin and eosin; MSLN, mesothelin; CA125, cancer antigen 125.

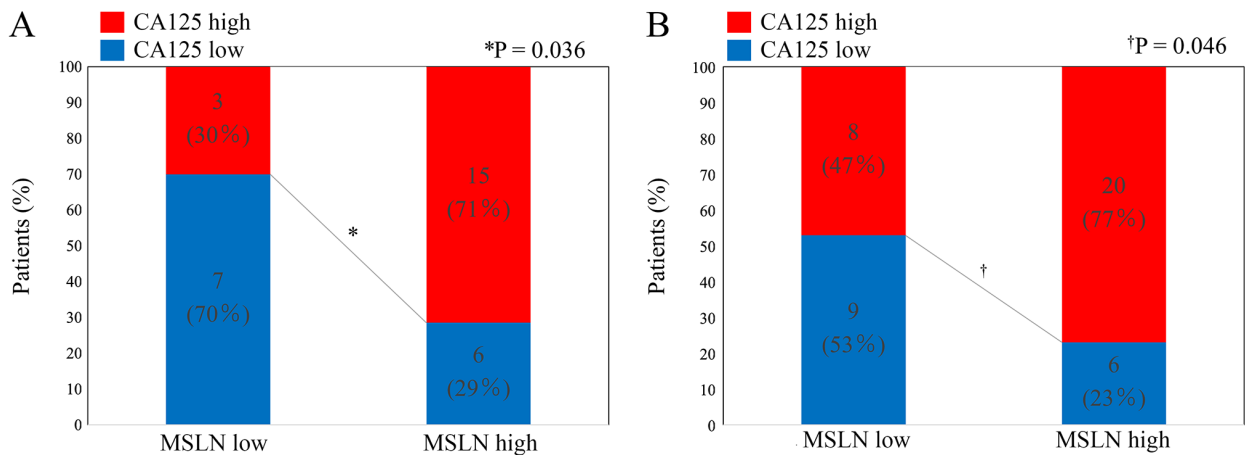


Figure 2. Association between MSLN and CA125 expression in (A) perihilar or (B) distal bile duct carcinoma tissues. MSLN, mesothelin; CA125, cancer antigen 125.

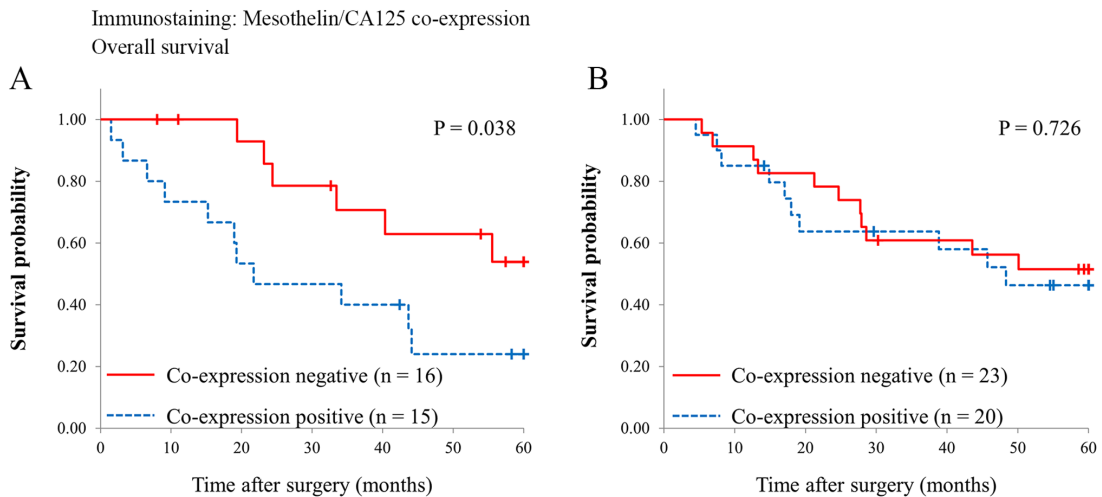


Figure 3. Comparison of overall survival between patients with (A) perihilar and (B) distal bile duct carcinoma with and without co-expression of mesothelin and cancer antigen 125.

Table II. Clinicopathological features of patients with perihilar bile duct carcinoma according to the expression levels of MSLN and CA125.

Parameter	MSLN expression			CA125 expression			Co-expression		
	High level (n=21)	Low level (n=10)	P-value	High level (n=18)	Low level (n=13)	P-value	Positive (n=15)	Negative (n=16)	P-value
Histological classification									
Grade 1/2	15	10	0.074	13	12	0.176	10	15	0.072
Grade 3	6	0		5	1		5	1	
Type									
Papillary-expanding	1	1	NC	0	2	NC	0	2	NC
Papillary-infiltrating	5	3		6	2		4	4	
Nodular-expanding	0	0		0	0		0	0	
Nodular-infiltrating	9	4		7	6		7	6	
Flat-expanding	0	0		0	0		0	0	
Flat-infiltrating	6	2		5	3		4	4	
pT stage UICC									
pT1-2	9	7	0.152	8	8	0.347	6	10	0.210
pT3-4	12	3		10	5		9	6	
pN stage UICC									
pN0	5	6	0.060	3	8	0.014	1	10	0.002
pN1-2	16	4		15	5		14	6	
pStage UICC									
pI-II	3	5	0.048	2	6	0.037	0	8	0.002
pIII-IV	18	5		16	7		15	8	
Lymphatic permeation									
Positive	20	9	0.548	18	11	0.168	15	14	0.258
Negative	1	1		0	2		0	2	
Blood vessel permeation									
Positive	19	9	0.704	18	10	0.064	15	13	0.125
Negative	2	1		0	3		0	3	
Neural invasion									
Positive	19	9	0.704	18	10	0.064	15	13	0.125
Negative	2	1		0	3		0	3	
Residual tumor									
R0	9	3	0.390	6	6	0.470	6	6	0.886
R1	12	7		12	7		9	10	
Recurrence									
Yes	6	5	0.221	14	6	0.076	11	9	0.269
No	15	5		4	7		4	7	

Data analyzed via Fisher's exact test (for parameters with expected values of <5 in >20% of cells) or χ^2 test. MSLN, mesothelin; CA125, cancer antigen 125; UICC, Union for International Cancer Control; pT stage, pathological tumor stage; pN stage, pathological lymph node stage; NC, not calculated.

These results suggest that co-expression of MSLN and CA125 plays a significant role in the acquisition of cell motility and invasive properties (13). The relation between MSLN expression and neural invasion in extrahepatic BDC was evaluated by previous study (16). They reported that MSLN expression did not associate with neural invasion. In this study, CA125 expression was more associated with the neural invasion than MSLN

expression in perihilar and distal BDC. These findings imply that CA125 promotes neural invasion in perihilar and distal BDC, although it remains necessary to clarify the biological function of CA125 expression *in vitro* and *in vivo* studies.

A recent study by Ishida *et al* (26) reported that low expression of MUC5AC and MUC6 predicts poor prognosis in patients with perihilar BDC but not in those with distal

Table III. Clinicopathological features of patients with distal bile duct carcinoma according to the expression levels of MSLN and CA125.

Parameter	MSLN expression			CA125 expression			Co-expression		
	High level (n=26)	Low level (n=17)	P-value	High level (n=28)	Low level (n=15)	P-value	Positive (n=20)	Negative (n=23)	P-value
Histological classification									
Grade 1/2	20	14	0.489	21	13	0.315	15	19	0.405
Grade 3	6	3		7	2		5	4	
Type									
Papillary-expanding	2	2	NC	1	3	NC	1	3	NC
Papillary-infiltrating	14	2		12	4		11	5	
Nodular-expanding	0	1		0	1		0	1	
Nodular-infiltrating	7	7		10	4		5	9	
Flat-expanding	0	0		0	0		0	0	
Flat-infiltrating	3	5		5	3		3	5	
pT stage UICC									
pT1-2	20	15	0.304	28	11	0.212	16	19	0.566
pT3-4	6	2		4	4		4	4	
pN stage UICC									
pN0	8	8	0.280	8	8	0.109	6	10	0.362
pN1-2	18	9		20	7		14	13	
pStage UICC									
pI-II	21	12	0.440	22	11	0.488	16	17	0.459
pIII-IV	5	5		6	4		4	6	
Lymphatic permeation									
Positive	24	13	0.155	26	11	0.099	18	19	0.403
Negative	2	4		2	4		2	4	
Blood vessel permeation									
Positive	25	14	0.163	27	12	0.114	19	20	0.359
Negative	1	3		1	3		1	3	
Neural invasion									
Positive	26	14	0.055	28	12	0.037	20	20	0.144
Negative	0	3		0	3		0	3	
Residual tumor									
R0	17	11	0.964	18	10	0.876	13	15	0.988
R1	9	6		10	5		7	8	
Recurrence									
Yes	11	9	0.494	12	8	0.512	8	12	0.425
No	15	8		16	7		12	11	

Data analyzed via Fisher's exact test (for parameters have expected values of <5 in >20% of cells) or χ^2 test. MSLN, mesothelin; CA125, cancer antigen 125; UICC, Union for International Cancer Control; pT stage, pathological tumor stage; pN stage, pathological lymph node stage; NC, not calculated.

BDC. Their results suggest that the role of MUC5AC expression might differ between perihilar and distal BDC. Our results similarly suggest that the role of MSLN and CA125 co-expression differs according to the location of BDC. The embryological origin of perihilar and distal bile duct is the same, but the environment is different. Most of the distal bile duct is located in the pancreatic parenchyma, whereas the

perihilar bile duct is partially surrounded by the liver, hepatic artery, and portal vein. The differences in tumor environment might influence the invasion process and biological function of the MSLN and CA125 co-expression. Furthermore, the genomic spectra of BDC differs according to the anatomical location, such as intrahepatic bile duct, extrahepatic bile duct, or gallbladder (27). Genomic changes in the tumor might

influence the signaling pathway controlled by the co-expression of MSLN and CA125. Genomic analysis of perihilar or distal BDC may reveal the factors affecting the signaling pathway induced by MSLN and CA125 co-expression.

Limitations of this study include its retrospective nature and that it was conducted in a single facility with a relatively small number of patients. However, to the best of our knowledge, this was the first study evaluating the association of MSLN and CA125 expression with clinicopathological features of extrahepatic BDC by focusing on the differences in tumor location. Our data should contribute to a better understanding of the clinicopathological role of MSLN-CA125 co-expression in perihilar or distal BDC. Another prospective multicenter trial is needed to confirm the effectiveness of MSLN and CA125 expression in the prediction of patient survival in perihilar and distal BDC.

In conclusion, MSLN and CA125 co-expression was associated with advanced tumor stage and poor prognosis in patients with perihilar BDC but not in those with distal BDC, which suggests that the role of co-expression in BDC differs depending on the location of the tumor.

Acknowledgements

The authors would like to thank Dr Nicole Clarke for editing a draft of this manuscript.

Funding

The present study was supported in part by the Japan Society for the Promotion of Science KAKENHI (grant no. JP 18K15295).

Availability of data and materials

The datasets used and/or analyzed during the current study are available from the corresponding author on reasonable request.

Authors' contributions

YT, TE, KK, TS, NY, IF, TT, YY, TI, YM, ES, HT, HU and YK analyzed and interpreted the patient data regarding the bile duct carcinoma, the surgical procedure and the prognosis. YT, YY, TE and SO performed the histological examination of the BDC tissues. YT was a major contributor in writing the manuscript. TE, HU and YK confirmed the authenticity of all the raw data. All authors read and approved the final manuscript.

Ethics approval and consent to participate

The present study was performed in accordance with the Declaration of Helsinki and was approved by the institutional review board of the National Defense Medical College (Tokorozawa, Japan; approval no. 4115). All patients agreed to participate in this study, and written informed consent was obtained from all patients.

Patient consent for publication

Not applicable.

Competing interests

The authors declare that they have no competing interests.

References

- Brierley JD, Gospodarowicz MK and Wittekind C (eds): Digestive system tumours. In: TNM Classification of Malignant Tumours. 8th edition. Wiley-Blackwell, Oxford, pp83-90, 2017.
- Rizvi S and Gores GJ: Pathogenesis, diagnosis, and management of cholangiocarcinoma. *Gastroenterology* 145: 1215-1229, 2013.
- Hoyos S, Navas MC, Restrepo JC and Botero RC: Current controversies in cholangiocarcinoma. *Biochim Biophys Acta Mol Basis Dis* 1864: 1461-1467, 2018.
- Khan SA, Tavolari S and Brandi G: Cholangiocarcinoma: Epidemiology and risk factors. *Liver Int* 39 (Suppl 1): 19-31, 2019.
- Matsukuma S, Tokumitsu Y, Shindo Y, Matsui H and Nagano H: Essential updates to the surgical treatment of biliary tract cancer. *Ann Gastroenterol Surg* 3: 378-389, 2019.
- Chang K, Pai LH, Pass H, Pogrebniak HW, Tsao MS, Pastan I and Willingham MC: Monoclonal antibody K1 reacts with epithelial mesothelioma but not with lung adenocarcinoma. *Am J Surg Pathol* 16: 259-268, 1992.
- Chang K and Pastan I: Molecular cloning of mesothelin, a differentiation antigen present on mesothelium, mesotheliomas, and ovarian cancers. *Proc Natl Acad Sci USA* 93: 136-140, 1996.
- Argani P, Iacobuzio-Donahue C, Ryu B, Rosty C, Goggins M, Wilentz RE, Murugesan SR, Leach SD, Jaffee E, Yeo CJ, *et al*: Mesothelin is overexpressed in the vast majority of ductal adenocarcinomas of the pancreas: Identification of a new pancreatic cancer marker by serial analysis of gene expression (SAGE). *Clin Cancer Res* 7: 3862-3868, 2001.
- Ordóñez NG: Application of mesothelin immunostaining in tumor diagnosis. *Am J Surg Pathol* 27: 1418-1428, 2003.
- Ho M, Hassan R, Zhang J, Wang QC, Onda M, Bera T and Pastan I: Humoral immune response to mesothelin in mesothelioma and ovarian cancer patients. *Clin Cancer Res* 11: 3814-3820, 2005.
- Einama T, Kamachi H, Nishihara H, Homma S, Kanno H, Takahashi K, Sasaki A, Tahara M, Okada K, Muraoka S, *et al*: Co-expression of mesothelin and CA125 correlates with unfavorable patient outcome in pancreatic ductal adenocarcinoma. *Pancreas* 40: 1276-1282, 2011.
- Hassan R, Bera T and Pastan I: Mesothelin: A new target for immunotherapy. *Clin Cancer Res* 10: 3937-3942, 2004.
- Rump A, Morikawa Y, Tanaka M, Minami S, Umesaki N, Takeuchi M and Miyajima A: Binding of ovarian cancer antigen CA125/MUC16 to mesothelin mediates cell adhesion. *J Biol Chem* 279: 9190-9198, 2004.
- Kaneko O, Gong L, Zhang J, Hansen JK, Hassan R, Lee B and Ho M: A binding domain on mesothelin for CA125/MUC16. *J Biol Chem* 284: 3739-3749, 2009.
- Gubbels JAA, Belisle J, Onda M, Rancourt C, Migneault M, Ho M, Bera TK, Connor J, Sathyanarayana BK, Lee B, *et al*: Mesothelin-MUC16 binding is a high affinity, N-glycan dependent interaction that facilitates peritoneal metastasis of ovarian tumors. *Mol Cancer* 5: 50, 2006.
- Kawamata F, Kamachi H, Einama T, Homma S, Tahara M, Miyazaki M, Tanaka S, Kamiyama T, Nishihara H, Taketomi A, *et al*: Intracellular localization of mesothelin predicts patient prognosis of extrahepatic bile duct cancer. *Int J Oncol* 41: 2109-2118, 2012.
- Nomura R, Fujii H, Abe M, Sugo H, Ishizaki Y, Kawasaki S and Hino O: Mesothelin expression is a prognostic factor in cholangiocellular carcinoma. *Int Surg* 98: 164-169, 2013.
- He X, Wang L, Riedel H, Wang K, Yang Y, Dinu CZ and Rojanasakul Y: Mesothelin promotes epithelial-to-mesenchymal transition and tumorigenicity of human lung cancer and mesothelioma cells. *Mol Cancer* 16: 63, 2017.
- Einama T, Homma S, Kamachi H, Kawamata F, Takahashi K, Takahashi N, Taniguchi M, Kamiyama T, Furukawa H, Matsuno Y, *et al*: Luminal membrane expression of mesothelin is a prominent poor prognostic factor for gastric cancer. *Br J Cancer* 107: 137-142, 2012.
- Kawamata F, Homma S, Kamachi H, Einama T, Kato Y, Tsuda M, Tanaka S, Maeda M, Kajino K, Hino O, *et al*: C-ERC/mesothelin provokes lymphatic invasion of colorectal adenocarcinoma. *J Gastroenterol* 49: 81-92, 2014.

21. Wang J, Bo X, Nan L, Wang CC, Gao Z, Suo T, Ni X, Liu H, Lu P, Wang Y, *et al*: Landscape of distant metastasis mode and current chemotherapy efficacy of the advanced biliary tract cancer in the United States, 2010-2016. *Cancer Med* 9: 1335-1348, 2020.
22. Hasebe T, Konishi M, Iwasaki M, Endoh Y, Nakagohri T, Takahashi S, Kinoshita T and Ochiai A: Histological characteristics of tumor cells and stromal cells in vessels and lymph nodes are important prognostic parameters of extrahepatic bile duct carcinoma: A prospective study. *Hum Pathol* 36: 655-664, 2005.
23. Noji T, Miyamoto M, Kubota KC, Shinohara T, Ambo Y, Matsuno Y, Kashimura N, Hirano S: Evaluation of extra capsular lymph node involvement in patients with extra-hepatic bile duct cancer. *World J Surg Oncol* 10: 106, 2012.
24. Shimizu A, Hirono S, Tani M, Kawai M, Okada K, Miyazawa M, Kitahata Y, Nakamura Y, Noda T, Yokoyama S, *et al*: Coexpression of MUC16 and mesothelin is related to the invasion process in pancreatic ductal adenocarcinoma. *Cancer Sci* 103: 739-746, 2012.
25. Chen SH, Hung WC, Wang P, Paul C and Konstantopoulos K: Mesothelin binding to CA125/MUC16 promotes pancreatic cancer cell motility and invasion via MMP-7 activation. *Sci Rep* 3: 1870, 2013.
26. Ishida K, Osakabe M, Eizuka M, Tai S, Sugimoto R, Fujita Y, Katagiri H, Takahara T, Uesugi N, Nitta H, *et al*: The expression of gastrointestinal differentiation markers in extrahepatic cholangiocarcinoma: Clinicopathological significance based on tumor location. *Hum Pathol* 92: 91-100, 2019.
27. Nakamura H, Arai Y, Totoki Y, Shirota T, Elzawahry A, Kato M, Hama N, Hosoda F, Urushidate T, Ohashi S, *et al*: Genomic spectra of biliary tract cancer. *Nat Genet* 47: 1003-1010, 2015.



This work is licensed under a Creative Commons Attribution-NonCommercial-NoDerivatives 4.0 International (CC BY-NC-ND 4.0) License.