

# Decreased T Cell Levels in Critically Ill Coronavirus Patients: Single-Center, Prospective and Observational Study

This article was published in the following Dove Press journal:  
*Journal of Inflammation Research*

Jingjing Xu<sup>1</sup>  
Zhiyu Liu<sup>2</sup>  
Haitao Liu<sup>1</sup>  
Yunpeng Luo<sup>3</sup>  
Kai Kang<sup>3</sup>  
Xueting Li<sup>1</sup>  
Wei Yang<sup>3</sup>  
Dongsheng Fei<sup>3</sup>  
Changsong Wang<sup>1,3</sup>   
Kaijiang Yu<sup>3</sup>

<sup>1</sup>Department of Critical Care Medicine, Harbin Medical University Cancer Hospital, Harbin, Heilongjiang Province, People's Republic of China; <sup>2</sup>Department of Laboratory Diagnostics, First Affiliated Hospital of Harbin Medical University, Harbin, Heilongjiang Province, People's Republic of China; <sup>3</sup>Department of Critical Care Medicine, The First Affiliated Hospital of Harbin Medical University, Harbin, Heilongjiang Province, People's Republic of China

Correspondence: Changsong Wang  
Department of Critical Care Medicine,  
Harbin Medical University Cancer  
Hospital, Harbin, Heilongjiang Province,  
People's Republic of China  
Email changsongwangicu@163.com

Kaijiang Yu  
Department of Critical Care Medicine,  
The First Affiliated Hospital of Harbin  
Medical University, No. 23 Youzheng  
Street, Harbin, Heilongjiang Province,  
People's Republic of China  
Email drkaijiang@163.com

**Background:** Since Dec. 2019, the COVID-19 pandemic has been an outbreak. T cells play an important role in dealing with various disease-causing pathogens. However, the role of T cells played in COVID-19 patients is still unknown. Our study aimed to describe the immunologic state of the critically ill COVID-19 patients.

**Methods:** A total of 63 patients with confirmed COVID-19 pneumonia were admitted to the Department of Intensive Care Unit of the First Affiliated Hospital of Harbin Medical University. The immunologic characteristics (lymphocyte apoptosis, the expression of PD-1 and HLA-DR in T cells, T cell subset levels, redistribution and the production of inflammatory factors) as well as their laboratory parameters were compared between severe group and critical group.

**Results:** The level of T cells in peripheral blood was decreased in critical patients compared with that in severe patients, but the expression levels of PD-1 (CD4<sup>+</sup>: 24.71% VS 30.56%; CD8<sup>+</sup>: 33.05% VS 32.38%) and HLA-DR (T cells: 36.28% VS 27.44%; monocytes: 20.58% VS 23.83%) in T cells were not significantly changed, and apoptosis and necrosis were not different in lymphocytes (apoptosis: 1.04% VS 1.27%; necrosis: 0.67% VS 1.11%), granulocytes, or monocytes between those two groups.

**Conclusion:** There is severe immunosuppression in critically ill COVID-19 patients. Redistribution of T cells might be the main reason for lymphocytic decline. Decreasing the infiltration of T lymphocytes in the lung may be beneficial for the treatment of COVID-19.

**Keywords:** COVID-19, T lymphocytes, PD-1, HLA-DR, redistribution

## Introduction

Since Dec. 2019, an outbreak of pneumonia cases caused by severe acute respiratory syndrome coronavirus 2 (SARS-CoV-2) began in Wuhan,<sup>1,2</sup> however, up to date, there is no conclusion about the origin of the SARS-CoV-2. As of Feb. 16, 2021, the number of confirmed pneumonia cases reached 110 million, and the cumulative number of deaths was 2429818. A recent report demonstrated that SARS-CoV-2 infection leads to ICU admission and high mortality.<sup>3</sup> However, there are few studies on the immunologic function of COVID-19 patients.

T cells play an important role in dealing with various disease-causing pathogens. It differentiates into several subsets of effector cells, including T helper type I (Th1), Th2, Th17, T follicular helper (Tfh), and regulatory T (Treg) cells.<sup>4</sup> Treg cells inhibit autoimmune responses. Cytokines are the determinant factors for T cell differentiation. For example, the proinflammatory cytokine IL-6, produced by

macrophages and T cells, is a critical determinant factor for driving Th17 cell differentiation and inhibiting Treg cell differentiation.<sup>5-7</sup> In recent studies, T cell level reduction was confirmed in COVID-19 patients.<sup>8,9</sup> This finding may indicate the presence of immunosuppression in patients with COVID-19. However, the reason for the reduction is still not clear. In our study, we explored the mechanism of immunosuppression in these patients. The immune status of COVID-19 patients will be described by lymphocyte apoptosis, the expression of PD-1 and HLA-DR in T cells, T cell subset levels and the production of inflammatory factors. Our findings will help us understand the immunologic mechanism of COVID-19.

## Patients and Methods

The study was approved by the Ethics Committee of the First Affiliated Hospital of Harbin Medical University. Written informed consent was regularly obtained from all patients upon admission to the Department of Intensive Care Medicine, the First Affiliated Hospital of Harbin Medical University (the intensive care center for severe COVID-19 patients in Harbin, Heilongjiang Province). The 63 confirmed COVID-19 patients in the intensive care unit (ICU) were severe/critical according to the Guidelines of the Diagnosis and Treatment of New Coronavirus Pneumonia (version 6) published by the National Health Commission of China or to the Sequential Organ Failure Assessment (SOFA) score. All the patients enrolled in this retrospective single-center study were admitted to the ICU from Feb. 12th to Mar. 26th, 2020.

Severe COVID-19 patients were defined as those satisfying any of the following criteria: 1. Patients who had hypoxemia at rest; hypoxemia was defined as arterial oxygen tension (PaO<sub>2</sub>) over inspiratory oxygen fraction (FIO<sub>2</sub>) of less than 300 mmHg or arterial oxygen saturation of 93% or lower. 2. Patients whose breathing rates were greater than 30 breaths per minute.

Critical patients were defined as COVID-19 patients who required high-flow nasal cannula or higher-level oxygen support measures to correct hypoxemia.

All medical record information, including epidemiological, demographic, clinical manifestation, and laboratory data were obtained. All data were checked by a team of trained physicians.

## Laboratory Examination

Laboratory confirmation of COVID-19 was performed by the local CDC according to the Chinese CDC protocol.

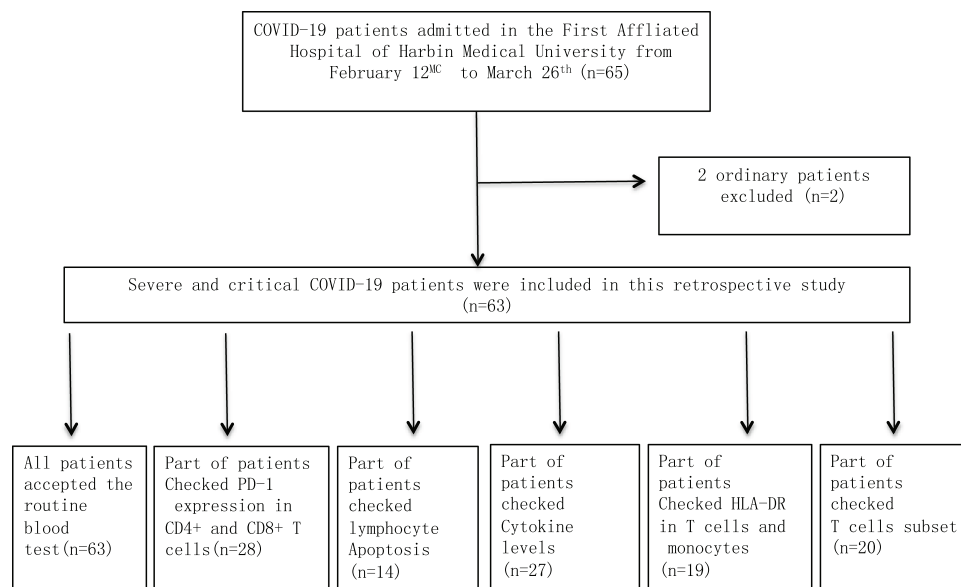
Throat swab specimens were collected from all patients, and the samples were maintained in viral transport medium for laboratory testing. Specimens, including sputum and blood, were cultured to identify pathogenic bacteria or fungi that may be associated with COVID-19 infection. A lymphocyte test kit (Beckman Coulter Inc., FL, USA) was used for lymphocyte subset analysis. The concentrations of serum cytokines (IL-2, IL-4, IL-6, IL-10, TNF- $\alpha$ , and IFN- $\gamma$ ) were quantitatively determined by a Human Th1/Th2 Cytokine Kit (Saiji Biotech, Hangzhou, China) as described in the instruction manual.

The expression of PD-1 was analyzed using a BD FACSCalibur (BD Biosciences, CA, USA) flow cytometer. Peripheral blood cells were surface stained with mouse anti-human CD8-FITC (BD Biosciences, CA, USA), CD4-PE (BD Biosciences, CA, USA) and CD279 (PD-1)-APC (Biolegend, CA, USA) monoclonal antibodies for 15 minutes in the dark at room temperature. After lysing with 1X BD FACS Lysing Solution (BD Biosciences, CA, USA), cells were then washed two times with PBS. Data were analyzed using Kaluza software (Version 2.1)(Beckman Coulter, IN, USA). The following monoclonal antibody panel was used for surface staining: CD8-FITC (BD Biosciences, CA, USA), CD4-PE (BD Biosciences, CA, USA) and CD279 (PD-1)-APC (Biolegend, CA, USA) for PD-1 expression on lymphocytes; CD14-FITC (BD Biosciences, CA, USA) and HLA-DR-PerCP (Miltenyi, Bergisch Gladbach, Germany) for HLA-DR expression on monocytes; CD4-FITC (Quanto Bio, Beijing, China), CD25-PE (Quanto Bio, Beijing, China) and CD127-APC (Quanto Bio, Beijing, China) for Treg cells. The stained samples were further lysed, washed, and resuspended in 200  $\mu$ L of PBS before acquisition.

Apoptosis was determined by a FITC Annexin V Apoptosis Detection Kit I (BD Biosciences, CA, USA) after lysing samples with a lysing solution that did not contain a fixative agent. Then, the cells were washed and stained with Annexin V-FITC and PI as described in the instruction manual.

Acquisitions of samples were carried on FACSCalibur flow cytometer (BD Biosciences, CA, USA). Cytokines data were analyzed using FCAP Array™ software (Version 3.0) (BD Biosciences, CA, USA), other data were analyzed using Kaluza software (Version 2.1)(Beckman Coulter, IN, USA).

Figure 1 shows the patient flowchart in this prospective and observational study.



**Figure 1** Flowchart of COVID-19 patients.

## Statistical Analyses

The quantized variables of parameters are expressed as the mean  $\pm$  standard deviation, and the significance was tested by *t*-test. Nonparametric variables are expressed as median and quartile intervals [M (P25, P75)], and significance was tested by Wilcoxon rank-sum test.  $P < 0.05$  was considered statistically significant in all statistical analyses. The Spearman rank correlation coefficient was used to analyze correlations. All statistical analyses were performed by Statistical Analysis System (SAS) (version 9.1.3, SAS Institute Inc., Cary, NC, USA).

## Results

### Patient Information

As of Mar. 26th, 2020, a total of 63 hospital-admitted patients with pneumonia were diagnosed with laboratory-confirmed COVID-19 in Harbin Medical University First Affiliated Hospital and were enrolled in our study. Those patients were divided into two groups: patients with SpO<sub>2</sub> 93%, respiratory rate 30 per min, or oxygenation index (OI) <300 as the severe group (n=27), whereas patients with the abovementioned signs and needed mechanical ventilation or had organ dysfunction complications as the critical group (n=36). The characteristics of these patients are described, we found that the difference in SOFA scores was statistically significant (p=0.031). The routine blood tests on the 63 COVID-19 patients showed that white blood cell (WBC) and neutrophil counts were normal in the severe group (5.31 $\times$ 10/L and 72.1%) but were slightly

increased in the critical group (7.86  $\times$ 10/L and 84%). However, lymphocyte counts were significantly lower in the critical group and decreased by almost 60% compared with those in the severe group (Table 1). According to these findings, we hypothesized that there was a relationship between the SOFA score and indicators from routine blood tests. To investigate this relationship, we performed linear correlation analysis between these indicators and the SOFA score.

### The Level of T Cells in Peripheral Blood Was Decreased in Critically Ill Patients

Our findings showed that the SOFA score was negatively correlated with lymphocyte counts, WBC counts, and neutrophil counts, especially lymphocyte counts ( $P < 0.0001$ ) (Table 2). This result indicated that lymphocyte counts and lymphocyte ratio were negatively correlated with disease severity in COVID-19 patients; furthermore, lymphocytic decline was an important marker for the outcome of this disease. Then, we tried to explore the reason for lymphocytic decline. We hypothesized that apoptosis was the main reason for lymphocytic decline. To investigate this hypothesis, we tested the apoptosis of CD3<sup>+</sup> T lymphocytes in peripheral blood.

### The Expression of PD-1 in CD4<sup>+</sup> T Cells Was Increased but Not Significantly Altered

The immune-inhibitory factor PD-1 can activate the apoptosis signaling pathway and induce the apoptosis of

**Table 1** Baseline Characteristics of COVID-19 Patients

Variables	Total (n=63)	Severe Patients (n=27)	Critical Patients (n=36)	P value
Age (years)	65.33±12.28	67.15±12.29	63.97±12.27	0.314
Gender				0.716
Female	32(50.79)	13(48.15)	19(52.78)	
Male	31(49.21)	14(51.85)	17(47.22)	
White blood cell count ( $\times 10^9/L$ )	6.49(5.05–8.75)	5.31(4.09–6.4)	7.86(6.39–10.2)	<0.001
Neutrophil (%)	78.95(63.05–86.65)	72.1(58.8–79.1)	84(71.2–90.3)	0.012
Neutrophil count ( $\times 10^9/L$ )	4.81(2.14–6.86)	3.83(2.01–4.97)	6.53(2.96–8.91)	0.024
Lymphocyte percentage (%)	9.15(4.5–15.55)	14.75(9.9–23.6)	5.9(3.8–9.6)	<0.001
Lymphocyte count ( $\times 10^9/L$ )	0.65(0.39–1.07)	0.71(0.57–1.1)	0.53(0.34–0.84)	0.109
Monocyte percentage (%)	6.45(0.36–11.7)	7.35(0.39–11.8)	1.09(0.32–11.1)	0.414
Monocyte count ( $\times 10^9/L$ )	0.63(0.38–1.04)	0.57(0.39–0.83)	0.74(0.33–1.22)	0.467
Platelet count ( $\times 10^9/L$ )	170(113.5–273)	174.5(116–294)	154.5(95–264)	0.541
SOFA	4(2–4)	3(2–4)	4(3–5)	0.031

immune cells. We tested the expression of PD-1 in CD4<sup>+</sup> and CD8<sup>+</sup> T cells and found that the expression of PD-1 was only slightly increased in CD4<sup>+</sup> T cells, but the difference was not statistically significant (Table 3). Whether was there truly no difference in T cell apoptosis between the severe and critical groups? For further study, apoptosis of immune cells was determined by a FITC Annexin V Apoptosis Detection Kit I. Our findings showed that apoptosis was not different in lymphocytes, granulocytes, or monocytes between the severe and critical groups (Table 4). Identically, we found that lymphocyte levels were obviously decreased in the critical group compared with those in the severe group (14.82% VS 30.82%). To determine the reason for lymphocytic decline, we also

**Table 2** Linear Correlation Analysis Between These Indicators and SOFA Score

Indicators	r <sub>s</sub>	P
White blood cell count ( $\times 10^9/L$ )	0.4020	0.0015
Neutrophil (%)	0.2588	0.0478
Neutrophil count ( $\times 10^9/L$ )	0.2223	0.1248
Lymphocyte percentage (%)	-0.4996	0.0000
Lymphocyte count ( $\times 10^9/L$ )	-0.3346	0.0090
Monocyte percentage (%)	-0.2489	0.0846
Monocyte count ( $\times 10^9/L$ )	0.0645	0.7260
Platelet count ( $\times 10^9/L$ )	-0.3901	0.0021

detected cell necrosis by the FITC Annexin V Apoptosis Detection Kit I and found that there were no differences in lymphocytes, granulocytes, or monocytes between the severe and critical groups (Table 4). Then, we detected the inflammatory cytokines IL-2, IL-4, IL-6, IL-10, TNF- $\alpha$ , and IFN- $\gamma$  and found that the levels of IL-6 inflammatory were increased in the critical group compared with those in the severe group (4.43pg/mL VS 9.3pg/mL), but the levels of IL-2, IL-4, IL-10, TNF- $\alpha$ , and IFN- $\gamma$  were no difference between the severe and critical groups (Table 5). There might be another reason for lymphocytic decline that we need to explore.

## The Expression of HLA-DR in T Cells and Monocytes

HLA-DR, an indicator of sepsis prognosis, has been shown to be associated with the T cell subset Treg cells. Our findings showed that the expression of HLA-DR in T cells was not different between the severe and critical groups (36.28% VS 27.44%) and that there was no difference between the severe and critical groups regarding monocytes (P= 0.41) (Table 6). Then, we detected the number of Treg cells and found that there was no difference between the severe and critical groups (Table 7). In addition to Treg cells, we also detected CD4<sup>+</sup> T cells, CD8<sup>+</sup> T cells, B lymphocytes and NK lymphocytes in peripheral blood. Consistently, we obtained

**Table 3** The Characteristics of PD-1 Expression of COVID-19 Patients

Variables	Total (n=28)	Severe Group (n=12)	Critical Group (n=16)	t/ $\chi^2$ /Z	P
Age (years)	62.68±11.89	64.42±11.39	61.38±12.46	0.663	0.513
Gender					0.459
Female	16(57.14)	8(66.67)	8(50.00)		
Male	12(42.86)	4(33.33)	8(50.00)		
CD4 <sup>+</sup> T (%)	39.14±11.9	46.23±8.89	33.83±11.26	3.144	0.004
PD1 <sup>+</sup> CD4 <sup>+</sup> T (%)	28.05±9.35	24.71±5.98	30.56±10.74	-1.694	0.102
CD8 <sup>+</sup> T (%)	21.35(14.55–28.25)	20.2(15.65–29)	23.05(13.7–28.25)	-0.023	0.982
PD1 <sup>+</sup> CD8 <sup>+</sup> T (%)	32.67±11.48	33.05±13.39	32.38±10.27	0.15	0.882

Note:  $\bar{x} \pm s$ , M(IQR), n(%).

a negative result; the levels of those immune cells in peripheral blood did not change between the severe and critical groups (Table 8). Finally, we hypothesized that distribution might be the main reason for lymphocytic decline.

### Distribution of T Cells

We additionally compared one male critical COVID-19 patient's T cell subsets (Figure 2) and cytokine levels (Table 9) in peripheral blood, BALF and pleural effusion.

**Table 4** The Characteristics of Immune Cell Apoptosis in COVID-19 Patients

Variables	Total (n=14)	Severe Group (n=5)	Critical Group (n=9)	t/ $\chi^2$ /Z	P
Age (years)	61.79±7.84	61.2±7.19	62.11±8.58	-0.201	0.844
Gender					0.580
Female	9(64.29)	4(80.00)	5(55.56)		
Male	5(35.71)	1(20.00)	4(44.44)		
Granulocyte					
Granulocyte (%)	56.53±14.67	34	60.28±11.83		
Necrosis cells (%)	1.06±0.6	0.7	1.12±0.63		
The late apoptosis cells (%)	0.58±0.22	0.79	0.55±0.22		
The early apoptosis cells (%)	2.4±0.97	3.2	2.27±0.99		
Apoptosis cells (%)	2.98±1.14	3.99	2.82±1.16		
Live cells (%)	95.97±1.46	95.3	96.08±1.57		
Lymphocyte					
lym (%)	20.54±11.03	30.82±9.65	14.82±6.96	3.604	0.004
Necrosis cells (%)	1.08(0.76–1.38)	0.67(0.6–1.35)	1.11(0.98–1.38)	-1.200	0.230
The late apoptosis cells (%)	0.33(0.2–0.83)	0.35(0.18–0.83)	0.3(0.21–0.52)	0.000	1.000
The early apoptosis cells (%)	0.9(0.72–2.06)	0.76(0.75–8.23)	0.97(0.72–2.02)	0.400	0.689
Apoptosis cells (%)	1.16(0.93–3.07)	1.04(0.94–9.06)	1.27(0.93–2.54)	0.3337	0.7386
Live cells (%)	97.45(94.3–98.1)	96.9(90.3–98.5)	97.9(96.1–98)	0.000	1.000
Monocyte					
Monocyte (%)	5.05(3.21–6.52)	6.26(4.14–6.62)	3.83(3.21–6.32)	0.801	0.423
Necrosis cells (%)	9.95±9.06	3.78±2.27	13.38±9.69	-2.148	0.053
The late apoptosis cells (%)	1.18(0.91–2.31)	0.91(0.56–1.16)	1.25(1.04–2.31)	-1.067	0.286
The early apoptosis cells (%)	3.84±1.52	3.83±1.6	3.84±1.57	-0.018	0.986
Apoptosis cells (%)	5.51±2.58	5.10±2.29	5.74±2.84	-0.43	0.6768
Live cells (%)	84.54±10.01	91.12±2.58	80.89±10.84	2.043	0.064

Note:  $\bar{x} \pm s$ , M(IQR), n(%).

**Table 5** Characteristics of Cytokines in COVID-19 Patients

Variables	Total (n=27)	Severe (n=10)	Critical (n=17)	t/Z/ $\chi^2$	P
Age(years)	64.74±11.45	62.9±10.58	65.82±12.11	-0.63	0.5322
Gender					0.6831
Female	9(33.33)	4(40.00)	5(29.41)		
Male	18(66.67)	6(60.00)	12(70.59)		
IL-2 (pg/mL)	1.04±0.39	1.14±0.41	0.98±0.38	1.05	0.3054
IL-4 (pg/mL)	1.34±0.59	1.47±0.65	1.27±0.57	0.82	0.4214
IL-6 (pg/mL)	6.11(4.17–15.56)	4.43(2.55–7.15)	9.3(5.2–30.98)	-2.2845	0.0223
IL-10 (pg/mL)	4.44(2.6–7.14)	3.68(3.07–4.5)	4.9(2.53–10.77)	-0.7782	0.4364
TNF (pg/mL)	1.56±0.38	1.7±0.41	1.48±0.36	1.52	0.1415
IFN- $\gamma$ (pg/mL)	1.01(0.85–1.14)	1.05(0.85–1.17)	1(0.85–1.07)	0.7035	0.4818

Note: [ $\bar{x} \pm s$ , M(IQR), n(%)].

**Table 6** The Characteristics of HLA-DR Expression in COVID-19 Patients

Variables	Total (n=19)	Severe Group (n=4)	Critical Group (n=15)	t/ $\chi^2$	P
Age (years)	63.74±8.55	68.25±7.8	62.53±8.58	1.203	0.246
Gender					1.000
Female	10(52.63)	2(50.00)	8(53.33)		
Male	9(47.37)	2(50.00)	7(46.67)		
T (%)	15.45±8.05	17.09±6.45	15.02±8.57	0.446	0.661
HLA-DR <sup>+</sup> (T %)	29.3±10.7	36.28±12.18	27.44±9.9	1.52	0.147
Monocytes (%)	9.5±3.65	10.39±3.13	9.26±3.84	0.539	0.597
HLA-DR <sup>+</sup> monocyte (%)	23.14±6.79	20.58±2.77	23.83±7.43	-0.845	0.410

Note: [ $\bar{x} \pm s$ , n(%)].

**Table 7** The Characteristics of CD4<sup>+</sup>Treg in COVID-19 Patients

Variables	Total (n=40)	Severe Group (n=19)	Critical Group (n=21)	$\chi^2$	P
Age (years)	63.48±11.15	64.42±12.94	62.62±9.48	0.010	0.992
Gender				0.002	0.962
Female	17(42.50)	8(42.11)	9(42.86)		
Male	23(57.50)	11(57.89)	12(57.14)		
CD4 <sup>+</sup> Treg (%)	9.49(8.24–11.45)	9.43(8.27–11.09)	9.77(8.2–11.6)	0.000	1.000

Note: [ $\bar{x} \pm s$ , n(%)].

There were no differences in the percentage of lymphocytes (T%) or the percentage of NK cells (NK%) in peripheral blood, BALF or pleural effusion. The lymphocyte absolute

values (LYM#) in peripheral blood, BALF and pleural effusion were 628, 156, and 299, respectively. T cell absolute values (T#) were 479, 116, and 267, respectively. CD4<sup>+</sup> T#

**Table 8** The Characteristics of T Cell Subset Expression in COVID-19 Patients

Variables	Total (n=20)	Severe Group (n=5)	Critical Group (n=15)	t/ $\chi^2$ /Z	P
Age (years)	62.90±9.41	67.4±7.02	61.4±9.83	1.253	0.226
Gender					1.000
Female	10(50.00)	3(60.00)	7(46.67)		
Male	10(50.00)	2(40.00)	8(53.33)		
T (%)	74.64±5.69	76.73±4.44	73.94±6.02	0.949	0.355
CD4 <sup>+</sup> /CD3 <sup>+</sup> (%)	47.42±6.77	52.25±4.73	45.82±6.69	1.976	0.064
CD8 <sup>+</sup> /CD3 <sup>+</sup> (%)	26.56±8.49	23.95±5.88	27.43±9.21	-0.785	0.443
CD19 <sup>+</sup> (%)	10.59±4.35	9.08±3.01	11.09±4.69	-0.891	0.385
CD16 <sup>+</sup> /CD3 <sup>+</sup> (%)	12.89(6.75–15.25)	11.33(6–12.17)	14.33(7.03–15.5)	-0.786	0.432
H/S	1.83(1.37–2.18)	1.97(1.86–2.24)	1.65(1.17–2.11)	1.223	0.222
Lym# (/μL)	979.05±452.4	1296±662.48	873.4±323.3	1.935	0.069
T # (/μL)	732.6±345.22	985.2±498.36	648.4±245.76	2.04	0.056
T4 # (/μL)	455.7±217.85	638.4±287	394.8±158.04	2.429	0.026
T8 # (/μL)	256.75±138.12	299±177.41	242.67±126.68	0.782	0.445
B # (/μL)	100.85±55.51	115.4±61.74	96±54.7	0.667	0.513
NK # (/μL)	116.95±80.91	150.6±115.01	105.73±67.58	1.078	0.295
CD4 <sup>+</sup> CD8 <sup>+</sup> (%)	2.34(1.8–2.81)	2.64(2.14–2.83)	2.31(1.69–2.78)	0.873	0.383
CD4 <sup>+</sup> CD8 <sup>+</sup> # (/μL)	16(11–21.5)	21(16–22)	15(9–21)	1.315	0.188

Note:  $\bar{x} \pm s$ , M(IQR), n(%).

were 321, 41, and 132, respectively; CD8<sup>+</sup> T# were 155, 70, and 133, respectively; B cell absolute values (B#) were 74, 9, and 7, respectively; NK cell absolute values (NK#) were 42, 13, and 20, respectively; and CD4<sup>+</sup>CD8<sup>+</sup> T cell absolute values were 11, 4, and 24, respectively.

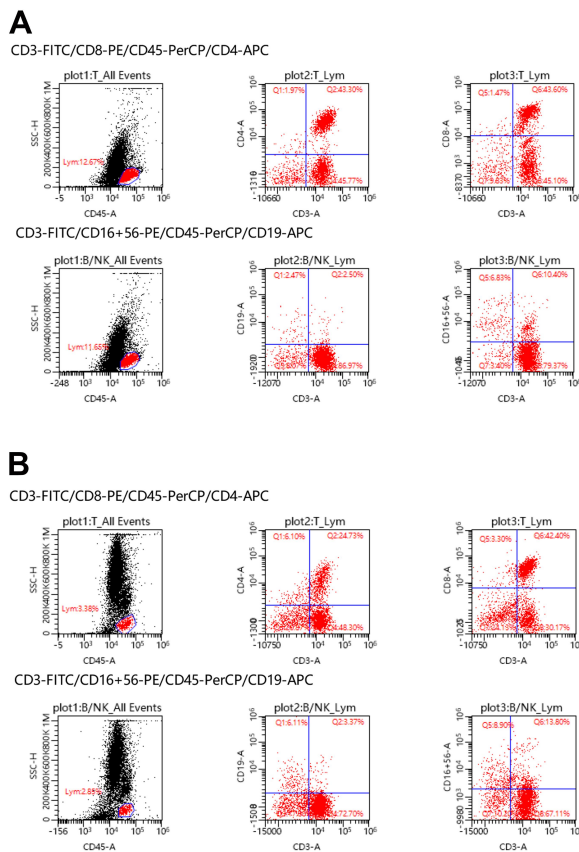
For the cytokine levels in the three samples, we observed that IL-2 levels were highest in BALF (7.28 pg/mL), lowest in pleural effusion (0.90 pg/mL), and 1.84 in peripheral blood. IL-6 levels were remarkably increased in BALF and pleural effusion (600.38 and 2201.38 pg/mL, respectively) compared with those in peripheral blood (42.84 pg/mL). Moreover, IL-10 levels were higher in pleural effusion (81.64 pg/mL) than in peripheral blood (26.36 pg/mL) and BALF (6.91 pg/mL).

## Discussion

This study analyzed severe and critical COVID-19 cases in Heilongjiang, China. This report is the first study to explore the mechanism of immunosuppression in critically ill COVID-19 patients. Recent studies have provided

evidence for person-to-person transmission of SARS-CoV-2.<sup>10,11</sup> COVID-19 has become a global problem that needs to be solved immediately. To date, many clinical and epidemiological features of COVID-19 have been reported.<sup>3,10–12</sup> However, there is little knowledge of immunology in COVID-19. Our study is of great significance for further understanding COVID-19.

T cells play an important role in dealing with various disease-causing pathogens.<sup>4</sup> A few studies have reported the decreased numbers and function of T cells in COVID-19 patients,<sup>8,9</sup> but the mechanism of the reduction in T cells is still unclear. Similarly, our study also found that the number of T cells was decreased in routine blood tests, particularly in critical patients. Then, we confirmed the reduction in CD3<sup>+</sup> T cell levels by flow cytometry. A study verified T cell exhaustion by measuring the exhaustion markers PD-1 and Tim-3<sup>9</sup> but did not perform further research. Therefore, we hypothesized that T cell exhaustion might be due to apoptosis. Then, apoptosis and the expression of PD-1 in immune cells were detected. In



**C**

T cell subset	Patient		
	Peripheral blood	BALF	Fleural effusion
Age(years)			
Gender		Male	
T(%)	76.28	74.55	89.27
CD4+T(%)	51.70	24.73	43.30
CD8+T(%)	25.00	42.40	43.60
B (%)	11.70	6.11	2.47
NK (%)	6.53	8.90	6.83
CD4+T/ CD8+T	2.07	0.58	0.99
Lym#(/uL)	628	156	299
T#(/uL)	479	116	267
CD4+T#(/uL)	321	41	132
CD8+T#(/uL)	155	70	133
B#(/uL)	74	9	7
NK#(/uL)	42	13	20
CD4+CD8+(%)	2.36	3.01	8.79
CD4+CD8+#(/uL)	11	4	24

**Figure 2** The characteristics of T cell subset in peripheral blood, BALF and pleural effusion of COVID-19 patient. (A) The percentage of lymphocytes (T%), B cells (B%) or NK cells (NK%) in pleural effusion. (B) The percentage of lymphocytes (T%), B cells (B%) or NK cells (NK%) in BALF. (C) The characteristics of T cell subset in peripheral blood, BALF and pleural effusion.

fact, we confirmed that CD3<sup>+</sup> T cell apoptosis and immune cell necrosis in critically ill patients was not more serious than that in severe COVID-19 patients by flow cytometry. They were not significantly different. In contrast, our study found that the expression of PD-1 was not increased significantly in CD4<sup>+</sup> and CD8<sup>+</sup> T cells in critical patients compared with those in severe patients. Our findings showed that apoptosis and cell necrosis levels were not different in lymphocytes, granulocytes, or monocytes

between the two groups. Therefore, we hypothesized that T cell exhaustion might be due to Treg cell proliferation. HLA-DR, an indicator of sepsis prognosis, has been reported to represent a natural T cell subset of CD8<sup>+</sup> HLA-DR<sup>+</sup> Treg cells, which may play a suppressive effect.<sup>13</sup> We detected the expression of HLA-DR in T cells and monocytes and tested the level of Treg cells in peripheral blood. Unfortunately, we found that either Treg proliferation or the expression of HLA-DR was not significantly changed in critically ill COVID-19 patients compared with those in severe patients. It suggested that anti-PD-1 and HLA-DR immunotherapy may be useless in treatment. However, our data are different from the results of some current studies. Some studies have reported that the expression of PD-1<sup>14</sup> and Tim3<sup>9</sup> is increased in COVID-19 patients and associate with exhaustion of T Cells, while others have reported that the expression of HLA-DR is decreased in critically ill patients.<sup>15</sup> Whatever the outcome, it could be due to that there are not enough patients enrolled, and too much uncertainty of the disease.

**Table 9** The Characteristics of Cytokines in Peripheral Blood, BALF and Pleural Effusion of COVID-19 Patient

Cytokines	Patient		
	Peripheral Blood	BALF	Pleural Effusion
IL-2 (pg/mL)	1.84	7.28	0.90
IL-4 (pg/mL)	1.21	2.95	2.07
IL-6 (pg/mL)	42.84	600.38	2201.38
IL-10 (pg/mL)	26.36	6.91	81.64
TNF-α (pg/mL)	0.92	51.54	2.54
IFN-γ (pg/mL)	1.62	16.99	2.68



Our findings indicated that CD3<sup>+</sup> T cell apoptosis and Treg proliferation were not the reason for T cell exhaustion, at least not the main reason. Then, we analyzed one patient to detect the distribution of T cells. A surprising discovery was that a large number of T cells infiltrated the lungs in this critical patient, which might be the main reason for the lymphocytic decline in peripheral blood. Our findings were similar to those of Dr. Xu's autopsy report: inflammatory infiltration occurred in both lungs, especially by lymphocytes.<sup>16</sup> However, we still need additional patients to detect the distribution of T cells.

When the virus invades the body, if the immune system is overactivated or uncontrolled, the infection induces an extreme immune response, releasing large amounts of cytokines that attack the host. This phenomenon is known as an "inflammatory storm." Similar to the case in SARS and Ebola, cytokine storms have become the main cause of death in COVID-19.<sup>17</sup> Cytokine and chemokine levels are significantly increased in patients with severe infection and are associated with the severity of the disease,<sup>18</sup> such as sepsis. In our study, we detected the levels of IL-6, IL-10, TNF- $\alpha$ , and IFN- $\gamma$  in peripheral blood and found that the levels of IL-6 were increased in the critical group compared with those in the severe group. However, according to our previous results, the number of T cells was reduced in the peripheral blood of critically ill patients. These two results seem to be contradictory, but this phenomenon may potentially be due to the activation of T cells. The function of activated T cells producing proinflammatory factors was enhanced in the peripheral blood of critically ill patients. Further study is needed to explore the function of inflammatory factor production in immune cells.

In addition to those findings, we detected cytokines from the alveolar lavage fluid and pleural effusion in one critically ill COVID-19 patient. Our findings showed that the level of IL-6 was significantly increased compared with that in peripheral blood. Our findings indicated that the local extreme immune response in the lungs might be an important cause of death in critical patients. Recently, some studies reported that reducing the level of IL-6 by sarilumab in peripheral blood might be helpful for the treatment of COVID-19 patients.<sup>19</sup> According to our study, reducing the level of IL-6 in peripheral blood may not be useful for critically ill patients. In summary, our findings indicated that attenuating the concentration of IL-6 or inhibiting the inflammatory response in the lungs might be a significant therapy for critically ill COVID-19 patients.

The limitations of this study were as follows: only 63 ill patients in Heilongjiang Province were enrolled. Heilongjiang Province is a cold region, and almost all

patients have chronic bronchial and cardiovascular diseases, which may not represent the global situation for COVID-19. In addition, the results we obtained only described the function of T cells in severely and critically ill COVID-19 patients, and B lymphocytes, granulocytes, and monocytes have yet to be further explored. In addition, the cases we collected lacked continuous observation, and we did not follow up with the patients to obtain biological indicators of the recovery stage. Similarly, we did not collect the relevant data of mild COVID-19 cases and healthy people. There were too many studies that reported the levels of PD-1, HLA-DR and Treg in healthy people. The expressions of PD-1 in T cell and the levels of Treg both of severe and critical group were increased compared with healthy people,<sup>20–22</sup> and the expressions of HLA-DR in T cell and monocytes were decreased compared with healthy people.<sup>23–25</sup> Our findings indicated that the severe immunosuppression in those COVID-19 patients. Finally, further COVID-19 studies at the molecular and gene levels are still needed.

## Conclusion

There is severe immunosuppression in critically ill COVID-19 patients. Immune dysfunction may be attributed mainly to T cell redistribution. Decreasing the number of T lymphocytes infiltrating the lung may be beneficial for the treatment of COVID-19.

## Abbreviations

SARS-CoV-2, severe acute respiratory syndrome coronavirus 2; COVID, Corona Virus Disease; SOFA score, the Sequential Organ Failure Assessment score; PD-1, programmed cell death protein 1; HLA-DR, human leukocyte antigen-DR; Treg cells, regulatory T cells.

## Ethics

The study was approved by the Ethics Committee of the First Affiliated Hospital of Harbin Medical University, Code number: kyk2020003, and was conducted in accordance with the Declaration of Helsinki.

## Acknowledgments

This research supported by the National Natural Science Foundation of China (Nos.81571871, 81770276 and 81772045), Nn10 program of Harbin Medical University Cancer Hospital. This work was supported by Novel coronavirus pneumonia emergency treatment and diagnosis technology research project of Heilongjiang provincial science and Technology Department.

## Author Contributions

All authors made a significant contribution to the work reported, whether that is in the conception, study design, execution, acquisition of data, analysis and interpretation, or in all these areas; took part in drafting, revising or critically reviewing the article; gave final approval of the version to be published; have agreed on the journal to which the article has been submitted; and agree to be accountable for all aspects of the work.

## Disclosure

The authors report no potential conflicts of interest.

## References

- Zhu N, Zhang D, Wang W, et al. A Novel Coronavirus from patients with pneumonia in China, 2019. *N Engl J Med.* 2020;382(8):727–733. doi:10.1056/NEJMoa2001017
- Gralinski LE, Menachery VD. Return of the Coronavirus: 2019-nCoV. *Viruses.* 2020;12:135. doi:10.3390/v12020135
- Huang C, Wang Y, Li X, et al. Clinical features of patients infected with 2019 novel coronavirus in Wuhan, China. *Lancet (London, England).* 2020;395:497–506. doi:10.1016/S0140-6736(20)30183-5
- Zhu J, Paul WE. Peripheral CD4+ T-cell differentiation regulated by networks of cytokines and transcription factors. *Immunol Rev.* 2010;238:247–262. doi:10.1111/j.1600-065X.2010.00951.x
- Bettelli E, Carrier Y, Gao W, et al. Reciprocal developmental pathways for the generation of pathogenic effector TH17 and regulatory T cells. *Nature.* 2006;441:235–238. doi:10.1038/nature04753
- Durant L, Watford WT, Ramos HL, et al. Diverse targets of the transcription factor STAT3 contribute to T cell pathogenicity and homeostasis. *Immunity.* 2010;32:605–615. doi:10.1016/j.immuni.2010.05.003
- Zhou L, Ivanov II, Spolski R, et al. IL-6 programs T(H)-17 cell differentiation by promoting sequential engagement of the IL-21 and IL-23 pathways. *Nat Immunol.* 2007;8:967–974. doi:10.1038/ni1488
- Chen G, Wu D, Guo W, et al. Clinical and immunological features of severe and moderate coronavirus disease 2019. *J Clin Invest.* 2020;130:2620–2629. doi:10.1172/JCI137244
- Diao B, Wang C, Tan Y, et al. Reduction and functional exhaustion of T cells in patients with Coronavirus Disease 2019 (COVID-19). *Front Immunol.* 2020;11:827. doi:10.3389/fimmu.2020.00827
- Li Q, Guan X, Wu P, et al. Early transmission dynamics in Wuhan, China, of Novel Coronavirus-infected pneumonia. *N Engl J Med.* 2020;382:1199–1207. doi:10.1056/NEJMoa2001316
- Chan JF, Yuan S, Kok KH, et al. A familial cluster of pneumonia associated with the 2019 novel coronavirus indicating person-to-person transmission: a study of a family cluster. *Lancet (London, England).* 2020;395:514–523. doi:10.1016/S0140-6736(20)30154-9
- Chen N, Zhou M, Dong X, et al. Epidemiological and clinical characteristics of 99 cases of 2019 novel coronavirus pneumonia in Wuhan, China: a descriptive study. *Lancet (London, England).* 2020;395:507–513. doi:10.1016/S0140-6736(20)30211-7
- Arruvito L, Payaslian F, Baz P, et al. Identification and clinical relevance of naturally occurring human CD8+HLA-DR+ regulatory T cells. *J Immunol.* 2014;193:4469–4476. doi:10.4049/jimmunol.1401490
- Moon C. Fighting COVID-19 exhausts T cells. *Nat Rev Immunol.* 2020;20:277. doi:10.1038/s41577-020-0304-7
- Benlyamani I, Venet F, Coudereau R, Gossez M, Monneret G. Monocyte HLA-DR measurement by flow cytometry in COVID-19 patients: an interim review. *Cytometry A.* 2020;97(12):1217–1221. doi:10.1002/cyto.a.24249
- Xu Z, Shi L, Wang Y, et al. Pathological findings of COVID-19 associated with acute respiratory distress syndrome. *Lancet Respir Med.* 2020;8:420–422. doi:10.1016/S2213-2600(20)30076-X
- Younan P, Iampietro M, Nishida A, et al. Ebola virus binding to Tim-1 on T lymphocytes induces a cytokine storm. *MBio.* 2017;8. doi:10.1128/mBio.00845-17
- La Gruta NL, Kedzierska K, Stambas J, Doherty PC. A question of self-preservation: immunopathology in influenza virus infection. *Immunol Cell Biol.* 2007;85:85–92. doi:10.1038/sj.icb.7100026
- Xu Y, Chen Y, Tang X. Guidelines for the diagnosis and treatment of COVID-19 by the National Health Commission (Trial Version 7). *Global Health Med.* 2020;2(2):66–72. doi:10.35772/ghm.2020.01015
- Zhang C, Li F, Li J, Xu Y, Wang L, Zhang Y. Docetaxel down-regulates PD-1 expression via STAT3 in T lymphocytes. *Clin Lung Cancer.* 2018;19:e675–e683. doi:10.1016/j.clcc.2018.04.010
- Xing YN, Zhang JY, Xu HM. The roles of serum CXCL16 in circulating Tregs and gastrointestinal stromal tumor cells. *Oncotargets Ther.* 2016;9:3939–3949. doi:10.2147/OTT.S105245
- Wei T, Zhang J, Qin Y, et al. Increased expression of immunosuppressive molecules on intratumoral and circulating regulatory T cells in non-small-cell lung cancer patients. *Am J Cancer Res.* 2015;5:2190–2201.
- Papadopoulos P, Pistiki A, Theodorakopoulou M, et al. Immunoparalysis: clinical and immunological associations in SIRS and severe sepsis patients. *Cytokine.* 2017;92:83–92. doi:10.1016/j.cyt.2017.01.012
- Yang HM, Yu Y, Chai JK, Hu S, Sheng ZY, Yao YM. Low HLA-DR expression on CD14+ monocytes of burn victims with sepsis, and the effect of carbachol in vitro. *Burns.* 2008;34:1158–1162. doi:10.1016/j.burns.2008.01.026
- Vester H, Dargatz P, Huber-Wagner S, Biberthaler P, van Griensven M. HLA-DR expression on monocytes is decreased in polytraumatized patients. *Eur J Med Res.* 2015;20:84. doi:10.1186/s40001-015-0180-y

Journal of Inflammation Research

Publish your work in this journal

The Journal of Inflammation Research is an international, peer-reviewed open-access journal that welcomes laboratory and clinical findings on the molecular basis, cell biology and pharmacology of inflammation including original research, reviews, symposium reports, hypothesis formation and commentaries on: acute/chronic inflammation; mediators of inflammation; cellular processes; molecular

mechanisms; pharmacology and novel anti-inflammatory drugs; clinical conditions involving inflammation. The manuscript management system is completely online and includes a very quick and fair peer-review system. Visit <http://www.dovepress.com/testimonials.php> to read real quotes from published authors.

Submit your manuscript here: <https://www.dovepress.com/journal-of-inflammation-research-journal>

Dovepress