

# Shannon entropy as a metric for conditional gene expression in *Neurospora crassa*

Abigail J. Ameri  and Zachary A. Lewis  \*

Department of Microbiology, University of Georgia, Athens, GA 30602, USA

\*Corresponding author: Department of Microbiology, University of Georgia, Athens, GA 30602, USA. zlewis@uga.edu

## Abstract

*Neurospora crassa* has been an important model organism for molecular biology and genetics for over 60 years. *Neurospora crassa* has a complex life cycle, with over 28 distinct cell types and is capable of transcriptional responses to many environmental conditions including nutrient availability, temperature, and light. To quantify variation in *N. crassa* gene expression, we analyzed public expression data from 97 conditions and calculated the Shannon Entropy value for *Neurospora*'s approximately 11,000 genes. Entropy values can be used to estimate the variability in expression for a single gene over a range of conditions and be used to classify individual genes as constitutive or condition-specific. Shannon entropy has previously been used measure the degree of tissue specificity of multicellular plant or animal genes. We use this metric here to measure variable gene expression in a microbe and provide this information as a resource for the *N. crassa* research community. Finally, we demonstrate the utility of this approach by using entropy values to identify genes with constitutive expression across a wide range of conditions and to identify genes that are activated exclusively during sexual development.

**Keywords:** Shannon entropy; R; conditional gene expression; *Neurospora*

## Introduction

Across conditions, individual genes can display expression patterns that can range from conditional to constitutive. When performing quantitative reverse transcription PCR (qRT-PCR), it is crucial to identify constitutively expressed genes for experimental normalization (Huggett et al. 2005). Conversely, highly regulated, condition-specific gene promoters are often used in molecular biology to drive conditional expression of a gene under investigation (e.g., an essential gene) or to control expression of reporter genes in certain cell types or environmental conditions (e.g., a gene encoding a fluorescent protein) (Giles et al. 1985; Hurley et al. 2012; Lamb et al. 2013). Moreover, identification of genes that are exclusively expressed during a condition or cell type of interest can reveal genes that are functionally important. Such genes or promoters are often identified by examining gene expression across just a handful of experimental conditions; however, with the increase in publicly available transcriptomics data, it is possible to quantify variation in gene expression across many conditions for a given organism.

In 1963, Claude Shannon laid the basis for information theory and described the unit known as Shannon entropy (Shannon 1997). A simplistic definition of Shannon entropy is that it describes the amount of information a variable can hold (Vajapeyam 2014). In our case, a variable is a gene, and the information is the collection of expression values from different conditions. If a gene is classified as having low entropy, then the expression values would be generally consistent across different conditions or possess a low amount of information. Instead, if a

gene is classified as having high entropy, then the expression of this gene would be highly variable across different conditions and contain a high amount of information.

Since entropy describes information contained in a variable, there are a number of uses for such a metric. Previous studies have used entropy to investigate cell and tissue-specific expression of genes (Schug et al. 2005), identify potential therapeutic targets (Fuhrman et al. 2000), characterize periodicity in gene expression (Langmead et al. 2002), identify cancerous tissue samples (van Wieringen and van der Vaart 2011), and make genomic comparisons (Machado 2012). Studies using entropy have been carried out in human cell lines (Heintzman et al. 2009), mouse (Schug et al. 2005), plants (Zhang et al. 2006), yeast (Lezon et al. 2006), bacteria, phage, and metagenomes (Akhter et al. 2013) but not yet in filamentous fungi.

*Neurospora crassa* has a 43 Mb genome encoding approximately ~11,000 genes (Galagan et al. 2003; Borkovich et al. 2004). There is a whole-genome knockout collection, and genetic, genomic, and epigenetic studies have been carried out with this organism for more than 100 years (Colot et al. 2006). Indeed, *N. crassa* has been used as a model organism for epigenetics, testing fungal enzymes for biomass degradation, and circadian clock studies (Dunlap et al. 2007; Tian et al. 2009; Aramayo and Selker 2013). As a resource for *N. crassa* researchers, we generated an entropy value for most genes in the *N. crassa* genome using publicly available RNA-seq data, and we validated this approach using previously published lists of housekeeping or inducible genes. This resource has a number of useful applications for the *N. crassa* community.

Received: October 24, 2020. Accepted: February 09, 2021

© The Author(s) 2021. Published by Oxford University Press on behalf of Genetics Society of America.

This is an Open Access article distributed under the terms of the Creative Commons Attribution License (<http://creativecommons.org/licenses/by/4.0/>), which permits unrestricted reuse, distribution, and reproduction in any medium, provided the original work is properly cited.

## Materials and methods

### Public data collection

Entropy calculations were made for all genes in the *N. crassa* genome using public RNA-seq data sets (97 conditions from a total of 173 separate sets including replicates; Supplementary Table S1).

### Data analysis

#### Mapping, transcripts per million, and entropy calculations:

HiSat2 (version 2.1.0) (Kim et al. 2019) was used to map all of the sequence read archive (SRA) accessions to the NC12 genome (NCBI assembly: GCA\_000182925.2) using appropriate parameters specific for paired or single-end sequence reads (with parameters `-RNA-strandness RF` or `R`) to produce bam files, which were then sorted and indexed using SAMtools (version 1.3) (Li et al. 2009). If experiments contain replicates, the replicate bam files were merged together before obtaining counts with featureCounts from Subread (version 1.6.2) (Liao et al. 2014). FeatureCounts was used with parameters `-T exon` to generate all counts at the gene level. Counts were imported into R where we obtained transcripts per million (TPM) using the function `calculateTPM` from the R package `scater` (McCarthy et al. 2017). This package takes in feature-level (in our case, gene level) counts and gene lengths and outputs the TPM values for each gene. TPM values were then used to calculate the Shannon entropy using the R package `BioQC` (Zhang et al. 2017). The function `entropySpecificity` was used to calculate the entropy values for all genes in the genome. To examine specific genes sets, we converted from NCU accession numbers to gene identifiers from NCBI Genome Assembly NC12 (GCA\_000182925.2) and plotted the kernel density estimation (KDE) with rug plots.

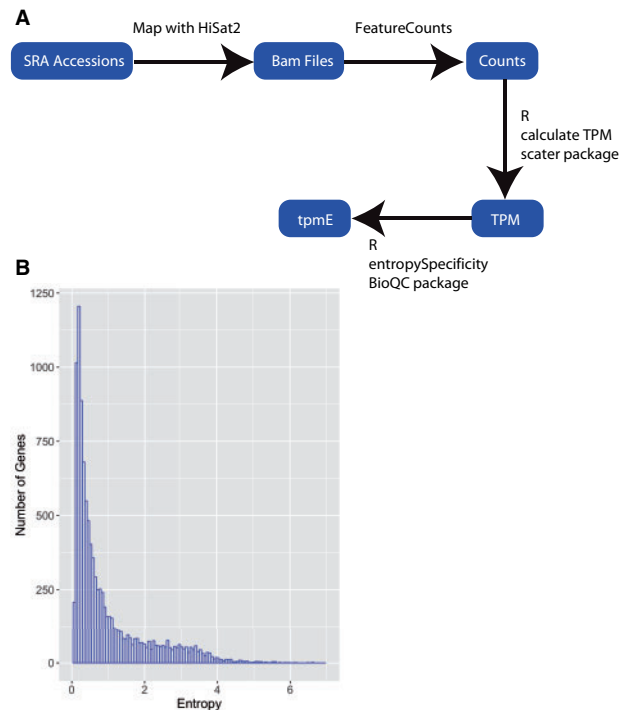
### Data availability

All supplementary tables have been uploaded to Figshare (<https://doi.org/10.25387/g3.13634993>). Supplementary Table S1 contains SRA accession numbers, short descriptions, total reads, and mapped reads for each public data set used. Calculated entropy values for all *N. crassa* genes are listed in Supplementary Table S2. Supplementary Table S3 contains all genes for which we were unable to calculate their entropy value due to 0 counts in all conditions. Underlying data used to generate heatmaps in Figures 2 and 3 with entropy values and NCU accessions are included in Supplementary Table S4. Lists of all *N. crassa* genes used to benchmark the entropy values and generate panels in Figures 2 and 3 are included in Supplementary Table S5. Heatmap column descriptions and their respective categories assigned are listed in Supplementary Table S6. Code used to generate the data in this manuscript is available through github (<https://github.com/ajcourtney/entropy>).

Supplementary material is available at <https://doi.org/10.25387/g3.13634993>.

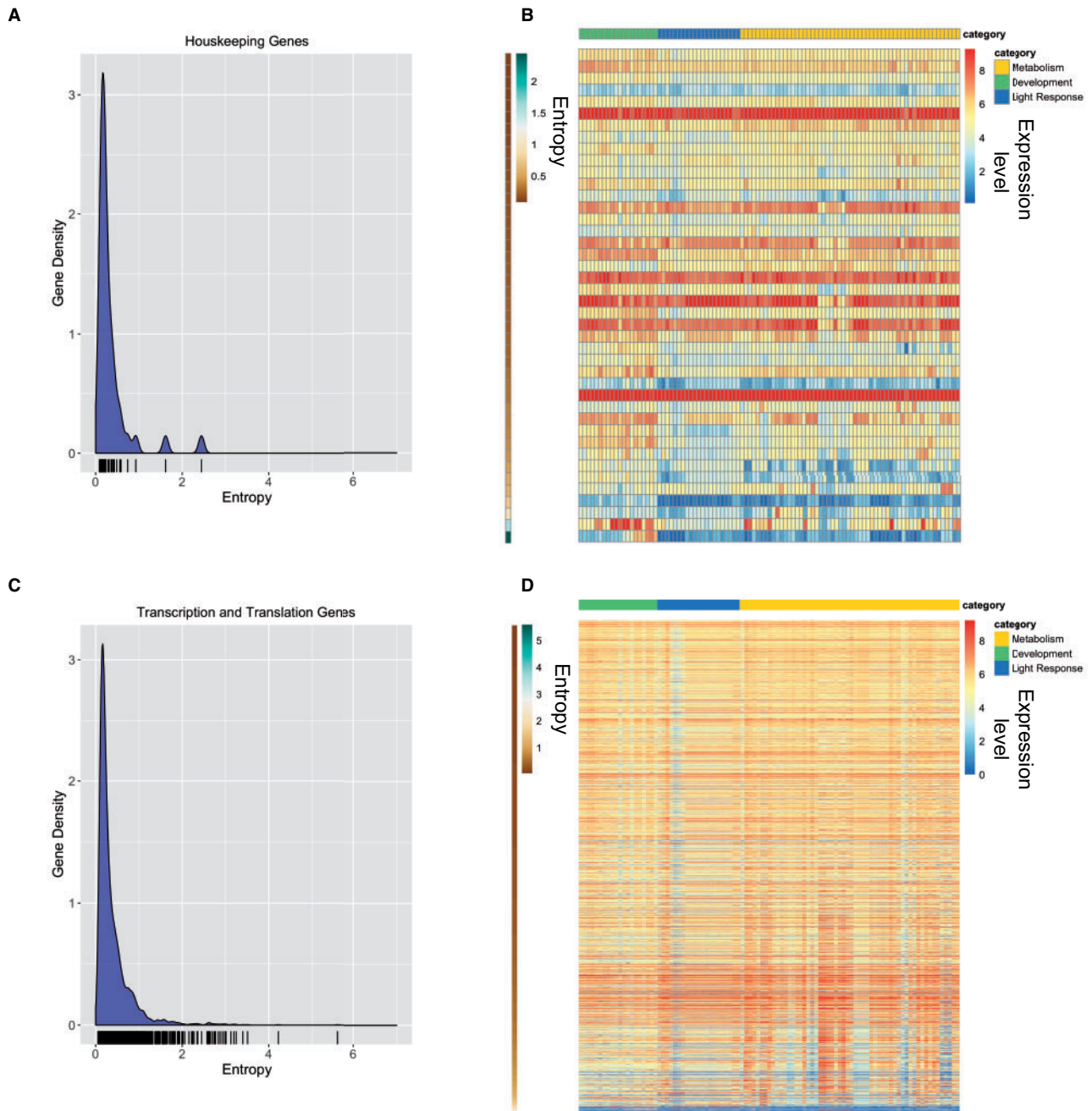
## Results

Shannon entropy values are useful in measuring the amount of variation in expression levels across different tissues or growth conditions. In order to calculate Shannon entropy values for all *N. crassa* genes, we first compiled a list of available RNA-seq data sets present in the NCBI SRA (Supplementary Table S1). We selected datasets that were generated with the wild-type Oak Ridge strain background, but we used both mating types. To calculate



**Figure 1** Calculation of Shannon entropy for *N. crassa* genes using public RNA-seq data. (A) Schematic of our computational pipeline for calculating Shannon entropy from publicly available datasets. (B) *Neurospora crassa* genes display a broad range of entropy values. The histogram shows entropy values for all genes. The y-axis is the number of genes found in each bin. The x-axis shows the binned entropy values.

accurate entropy values, we needed to gather many observations of gene expression across different conditions. We searched the SRA database (Leinonen et al. 2011) for *N. crassa* RNA-sequencing entries that were processed at different developmental stages or grown under different conditions. In total, we gathered 173 accessions, which represent 97 developmental or growth conditions. We then developed a pipeline to generate entropy values for each gene (Figure 1A). Calculated entropy values are available in Supplementary Table S2. We first mapped to the NC12 *N. crassa* genome using HiSat2 (Kim et al. 2019) to generate bam files. The bam files were then used to generate read counts for each gene in each condition using featureCounts (Liao et al. 2014), which assigns reads to genomic features. Once the count file was created, we calculated normalized expression values using the TPM normalization method to create a matrix of normalized expression values for all genes in all conditions. We then used this expression matrix to calculate the Shannon entropy value for each gene (Zhang et al. 2017). This generated entropy values for 10,300 out of 10,398 genes. The remaining 98 genes had 0 read counts in all conditions, so we were unable to calculate entropy. Out of the 98 genes with 0 read counts, 42 are hypothetical protein-coding genes, 10 are protein coding with an annotation, and the remaining 46 code for rRNA, tRNA, or ncRNAs (Supplementary Table S3). Our final entropy values range from 0.0506 to 6.599. Seventy percent of the genes in the genome possess low entropy values between 0.05 and 1 (7180/10,300) (Figure 1B). These values include the constitutively expressed genes in the genome. Entropy values above one represent only 30% of the genome (3120/10,300), corresponding to genes with more condition-specific expression patterns.

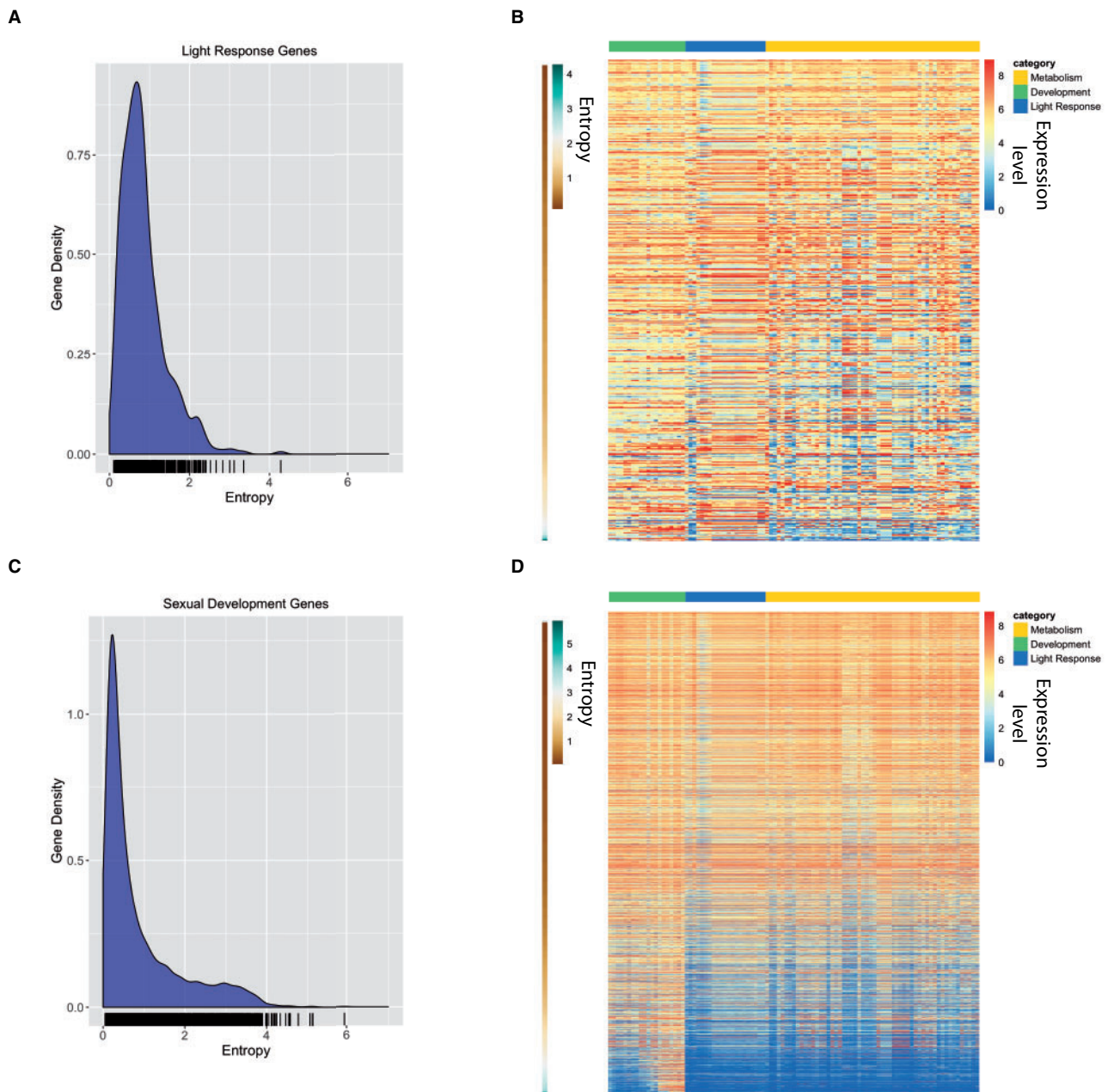


**Figure 2** Constitutively expressed genes are characterized by low entropy values. (A) The relative frequency of entropy values for a list of housekeeping genes is shown as a KDE plot. The rug plot, black lines on the bottom in the KDE plot, represents the individual data points that create the estimation. The y-axis is the probability density, which is the probability for each unit (gene) on the x-axis. The total area below the KDE curve integrates to one. (B) The heatmap shows the expression value for housekeeping genes across all conditions analyzed. The expression level for each gene is plotted as the  $\log_2$  transformed TPM value. Genes (rows) are plotted in ranked order based on the entropy value from low (top) to high (bottom). The scale on the left indicates entropy values for each gene. Each condition (column) has been assigned a category: Metabolism (gold), Development (green), or Light Response (blue). The categories are represented at the top of the heatmap in the three different colors. (C) The relative frequency of entropy values for a list of genes related to transcription and translation is shown as a KDE plot. The rug plot, black lines on the bottom in the KDE plot, represents the individual data points that create the estimation. The y-axis is the probability density, which is the probability for each unit (gene) on the x-axis. (D) Heatmap of  $\log_2$  transformed TPM values from all transcription and translation related genes (rows) ranked by entropy (low to high). Entropy values are depicted by the brown to green heatmap on the left, where brown is low (top) and green is high (bottom). Each condition (column) has been assigned a category: Metabolism (gold), Development (green), or Light Response (blue). The categories are represented at the top of the heatmap in the three different colors.

### Validation of entropy as a measure of gene expression variation in *N. crassa*

In order to determine if entropy values are a reliable predictor of expression variability in a microbe, we examined the entropy values generated here for published gene sets expected to be

enriched for constitutively expressed genes, or conversely, for gene sets expected to contain genes with highly condition-specific expression patterns. If entropy value is a reliable measure of gene expression variation across conditions, housekeeping genes should be enriched for genes with low entropy values,



**Figure 3** Validating entropy values with previously published light-induced genes and genes induced during sexual development. (A) The relative frequency of entropy values for a list of light-induced genes is shown as a KDE plot. The rug plot, black lines on the bottom in the KDE plot, represents the individual data points that create the estimation. The y-axis is the probability density, which is the probability for each unit (gene) on the x-axis. The total area below the KDE curve integrates to one. (B) The heatmap shows the expression value for light-induced genes across all conditions analyzed. The expression level for each gene is plotted as the log<sub>2</sub> transformed TPM value. Genes (rows) are plotted in ranked order based on the entropy value from low (top) to high (bottom). The scale on the left indicates entropy values for each gene. Each condition (column) has been assigned a category: Metabolism (gold), Development (green), or Light Response (blue). The categories are represented at the top of the heatmap in the three different colors. (C) The relative frequency of entropy values for a list of sexual development genes is shown as a KDE plot. The rug plot, black lines on the bottom in the KDE plot, represents the individual data points that create the estimation. The y-axis is the probability density, which is the probability for each unit (gene) on the x-axis. The total area below the KDE curve integrates to one. (D) The heatmap shows the expression value for sexual development genes across all conditions analyzed. The expression level for each gene is plotted as the log<sub>2</sub> transformed TPM value. Genes (rows) are plotted in ranked order based on the entropy value from low (top) to high (bottom). The scale on the left indicates entropy values for each gene. Each condition (column) has been assigned a category: Metabolism (gold), Development (green), or Light Response (blue). The categories are represented at the top of the heatmap in the three different colors.

whereas sets of conditionally induced genes are expected to be enriched for high entropy values. Two previous studies identified genes useful for RT-qPCR controls in *N. crassa*. One of which published a list of 38 genes classified as “housekeeping genes” based on previously generated microarray and RNA-seq datasets under three different conditions [quinic acid (QA) induction, circadian

gene expression profiling, and light response] (Hurley et al. 2015), and the other study identified four genes by using previous transcriptomic studies and genes used in related organisms to generate candidates that were validated by quantitative PCR under different conditions (Cusick et al. 2014) (Supplementary Table S1). To visualize the distribution of entropy values in this set of 42

“housekeeping” genes, we plotted a KDE of entropy values (Figure 2A). The KDE is a smoothed version of a histogram estimated from the underlying data. As expected, the highest density of data points in the housekeeping data set is around 0.25 (low entropy) and the density falls sharply around 0.75 (Figure 2A). Two genes in this set possess entropy values above 1.6 and they encode an exo-beta-1,3-glucanase and a UDP-glucose dehydrogenase. We plotted a heatmap depicting TPM values for each gene in each condition with genes ranked by entropy values from low to high (top to bottom) (Figure 2B and Supplementary Table S4). Genes with higher entropy values showed significant induction of gene expression under certain conditions, whereas genes with low entropy values displayed consistent expression values across all conditions. In particular, the two genes with high entropy values showed marked induction under certain conditions. Thus, these data highlight the value of performing a comprehensive analysis of conditional gene expression when selecting constitutive control genes.

We further validated the use of entropy as a measure for constitutive gene expression by using the same approach with a published list of 2624 genes involved in transcription and translation (Supplementary Table S1), reasoning that genes involved in these essential processes would be expressed at similar levels in all 93 conditions we investigated (Benz et al. 2014). The distribution of entropy values for transcription and translation genes resembles the distribution of entropy values for housekeeping genes where the highest density is concentrated at the low end of entropy values (Figure 2C). Many of the genes that possess entropy values above 1.6 are either hypothetical proteins or genes associated with cellular transport or metabolism. We again examined the TPM values for each gene in this set in a heatmap ranked by entropy from low to high and again find mostly steady expression across conditions (Figure 2D and Supplementary Table S4).

We next asked if higher entropy values were associated with conditionally expressed genes. The highest entropy values imply that a gene must only be expressed under specific conditions and may only show expression in one or a few of the conditions in the entire RNA-seq dataset. To confirm that higher entropy values were indeed associated with condition- or tissue-specific gene expression, we created KDE plots for 513 genes induced by light (Figure 3A and Supplementary Table S1) and 3259 genes that have expression changes during sexual development (Figure 3C and Supplementary Table S1) (Wang et al. 2014; Wu et al. 2014). In both cases, there is a shift in distribution of entropy values toward higher entropy values compared to “housekeeping” or “transcription and translation” genes. We examined TPM values for each gene in each condition using a heatmap ranked by entropy values from low to high (top to bottom) and find that a majority of genes in each gene set show variable expression across conditions, as expected (Figure 3, B and D and Supplementary Table S4). Genes that have regulation changes during perithecial (sexual) development also show a shift to the right, but with retention of more low entropy genes than in the light-induced gene set (Figure 3C). Plotting the TPM values in an entropy ranked heatmap shows that approximately half of these genes are highly expressed across many conditions and half are variably expressed, corresponding to genes with lower entropy values in the density plot (Figure 3D and Supplementary Table S4). This implies that half of these genes are not specific to sexual or vegetative cell types even though they show transcriptional changes throughout development (Wang et al. 2014).

As a final confirmation that entropy can be used as a reliable metric to assess the variation or lack of variation in gene

expression levels across many conditions, we plotted the expression levels of 100 genes with the highest entropy values and 100 genes with the lowest entropy values. We took the  $\log_2$  TPM values for all conditions (columns) and plotted them for each gene in a heatmap for both the top and bottom 100 genes. As expected, genes with the lowest entropy values show mostly uniform expression across all conditions (Figure 4A), and genes in the high entropy group displayed highly variable and condition-specific expression (Figure 4B). Together, these data demonstrate that entropy is an effective tool for measuring variation in gene expression levels in a filamentous fungus.

## Discussion

The information and code generated in the course of this study could prove useful in a number of ways. First, identifying genes that are induced in a certain condition and display a high entropy value will help identify genes that are condition-specific. In addition, examining entropy values for individual genes can be a useful approach for finding new inducible promoters to use for genetic studies. Condition-specific expressed genes are good starting targets to test for this purpose. The entropy metric determined here can also be used to confirm constitutive expression of genes chosen as controls for RT-PCR. In examining the housekeeping genes from previously published studies it is clear that not all will function as good controls under all conditions, a limitation that was discussed by Hurley et al. (2015). We combined all of their housekeeping genes together, whereas they had them divided into housekeeping genes usable for different conditions in qRT-PCR (QA induction, light response studies, and circadian experiments). Here we can choose genes that will work across all conditions (provided the conditions were represented in the initial dataset). Our approach provides a quantitative metric that can be applied to identify condition-specific genes, as opposed to investigating individual datasets or using controls from previous studies, which may not perform as expected. In addition, this methodology is scalable; the initial inclusion of more conditions will only increase the robustness of the metric produced. As more data are published, more datasets can be incorporated. This approach can be used across other fungi in addition to *N. crassa*, provided there are sufficient RNA-seq data publicly available.

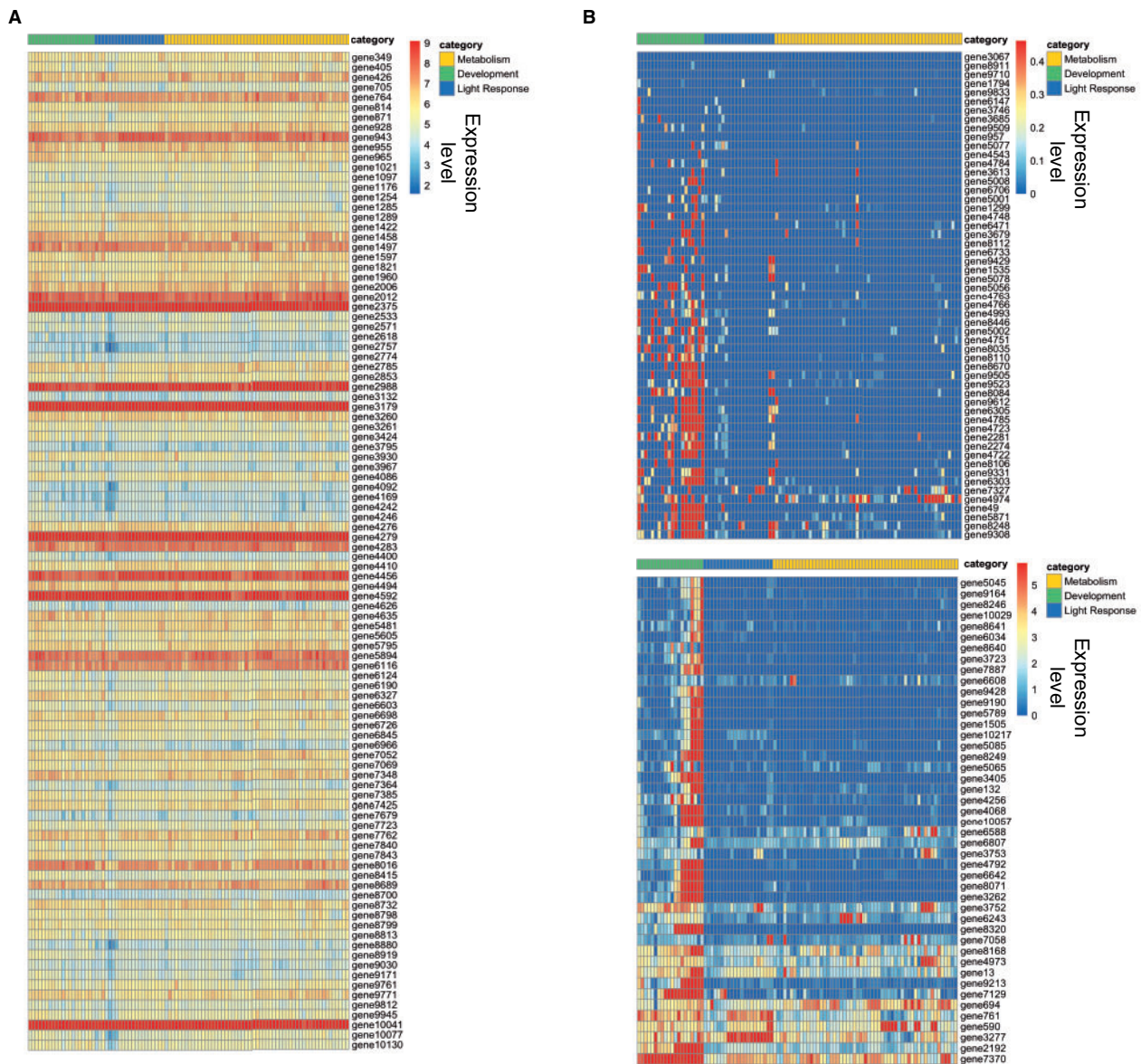
## Acknowledgments

We would like to thank Dr. Shannon Quinn for meaningful discussions and insight on this project, and Dr. Kristina Smith for comments on the manuscript.

## Funding

This work was supported by grants from the National Institutes of Health (NIH) (R01GM132644) to Z.A.L. and the National Science Foundation Graduate Research Fellowship Program Grant (DGE-1443117) to A.J.A.

*Conflicts of interest:* None declared.



**Figure 4** Log<sub>2</sub> TPM values for lowest and highest ranked genes. (A) The heatmap shows the expression values for the 100 genes with the lowest entropy values. The expression level for each gene is plotted as the log<sub>2</sub> transformed TPM value. Each row represents a gene. Gene names are listed on the right side of the heatmap. Each condition (column) has been assigned a category: Metabolism (gold), Development (green), or Light Response (blue). The categories are represented at the top of the heatmap in the three different colors. (B) The heatmap shows the expression values for the 100 genes with the highest entropy values. The expression level for each gene is plotted as the log<sub>2</sub> transformed TPM value. Each row represents a gene. Gene names are listed on the right side of the heatmap. Each condition (column) has been assigned a category: Metabolism (gold), Development (green), or Light Response (blue). The categories are represented at the top of the heatmap in the three different colors.

## Literature cited

Akhter S, Bailey BA, Salamon P, Aziz RK, Edwards RA. 2013. Applying Shannon's information theory to bacterial and phage genomes and metagenomes. *Sci Rep.* 3:1033.

Aramayo R, Selker EU. 2013. *Neurospora crassa*, a model system for epigenetics research. *Cold Spring Harb Perspect Biol.* 5:a017921.

Benz JP, Chau BH, Zheng D, Bauer S, Glass NL, et al. 2014. A comparative systems analysis of polysaccharide-elicited responses in *Neurospora crassa* reveals carbon source-specific cellular adaptations. *Mol Microbiol.* 91:275–299.

Borkovich KA, Alex LA, Yarden O, Freitag M, Turner GE, et al. 2004. Lessons from the genome sequence of *Neurospora crassa*: tracing the path from genomic blueprint to multicellular organism. *Microbiol Mol Biol Rev.* 68:1–108.

Colot HV, Park G, Turner GE, Ringelberg C, Crew CM, et al. 2006. A high-throughput gene knockout procedure for *Neurospora* reveals functions for multiple transcription factors. *Proc Natl Acad Sci U S A.* 103:10352–10357.

Cusick KD, Fitzgerald LA, Pirlo RK, Cockrell AL, Petersen ER, et al. 2014. Selection and evaluation of reference genes for expression studies with quantitative PCR in the model fungus *Neurospora crassa* under different environmental conditions in continuous culture. *PLoS One.* 9:e112706.

Dunlap JC, Loros JJ, Colot HV, Mehra A, Belden WJ, et al. 2007. A circadian clock in *Neurospora*: how genes and proteins cooperate to produce a sustained, entrainable, and compensated biological oscillator with a period of about a day. *Cold Spring Harb Symp Quant Biol.* 72:57–68.

- Fuhrman S, Cunningham MJ, Wen X, Zweiger G, Seilhamer JJ, et al. 2000. The application of Shannon entropy in the identification of putative drug targets. *Biosystems*. 55:5–14.
- Galagan JE, Calvo SE, Borkovich KA, Selker EU, Read ND, et al. 2003. The genome sequence of the filamentous fungus *Neurospora crassa*. *Nature*. 422:859–868.
- Giles NH, Case ME, Baum J, Geever R, Huiet L, et al. 1985. Gene organization and regulation in the qa (quinic acid) gene cluster of *Neurospora crassa*. *Microbiol Rev*. 49:338–358.
- Heintzman ND, Hon GC, Hawkins RD, Kheradpour P, Stark A, et al. 2009. Histone modifications at human enhancers reflect global cell-type-specific gene expression. *Nature*. 459:108–112.
- Huggett J, Dheda K, Bustin S, Zumla A. 2005. Real-time RT-PCR normalisation; strategies and considerations. *Genes Immun*. 6: 279–284.
- Hurley JH, Dasgupta A, Andrews P, Crowell AM, Ringelberg C, et al. 2015. A tool set for the genome-wide analysis of *Neurospora crassa* by RT-PCR. *G3 (Bethesda)*. 5:2043–2049.
- Hurley JM, Chen CH, Loros JJ, Dunlap JC. 2012. Light-inducible system for tunable protein expression in *Neurospora crassa*. *G3 (Bethesda)*. 2:1207–1212.
- Kim D, Paggi JM, Park C, Bennett C, Salzberg SL. 2019. Graph-based genome alignment and genotyping with HISAT2 and HISAT-genotype. *Nat Biotechnol*. 37:907–915.
- Lamb TM, Vickery J, Bell-Pedersen D. 2013. Regulation of gene expression in *Neurospora crassa* with a copper responsive promoter. *G3 (Bethesda)*. 3:2273–2280.
- Langmead CJ, McClung CR, Donald BR. 2002. A maximum entropy algorithm for rhythmic analysis of genome-wide expression patterns. *Proc IEEE Comput Soc Bioinform Conf*. 1:237–245.
- Leinonen R, Sugawara H, Shumway M, International Nucleotide Sequence Database Collaboration. 2011. The sequence read archive. *Nucleic Acids Res*. 39:D19–D21.
- Lezon TR, Banavar JR, Cieplak M, Maritan A, Fedoroff NV. 2006. Using the principle of entropy maximization to infer genetic interaction networks from gene expression patterns. *Proc Natl Acad Sci U S A*. 103:19033–19038.
- Li H, Handsaker B, Wysoker A, Fennell T, Ruan J, 1000 Genome Project Data Processing Subgroup, et al. 2009. The sequence alignment/map format and SAMtools. *Bioinformatics*. 25:2078–2079.
- Liao Y, Smyth GK, Shi W. 2014. featureCounts: an efficient general purpose program for assigning sequence reads to genomic features. *Bioinformatics*. 30:923–930.
- Machado JAT. 2012. Shannon entropy analysis of the genome code. *Math Probl Eng*. 2012.
- McCarthy DJ, Campbell KR, Lun ATL, Wills QF. 2017. Scater: pre-processing, quality control, normalization and visualization of single-cell RNA-seq data in R. *Bioinformatics*. 33:1179–1186.
- Schug J, Schuller WP, Kappen C, Salbaum JM, Bucan M, et al. 2005. Promoter features related to tissue specificity as measured by Shannon entropy. *Genome Biol*. 6:R33.
- Shannon CE. 1997. The mathematical theory of communication. 1963. *MD Comput*. 14:306–317.
- Tian C, Beeson WT, Iavarone AT, Sun J, Marletta MA, et al. 2009. Systems analysis of plant cell wall degradation by the model filamentous fungus *Neurospora crassa*. *Proc Natl Acad Sci U S A*. 106: 22157–22162.
- Vajapeyam S. 2014. Understanding Shannon's Entropy metric for Information. arXiv preprint. arXiv:1405.2061
- van Wieringen WN, van der Vaart AW. 2011. Statistical analysis of the cancer cell's molecular entropy using high-throughput data. *Bioinformatics*. 27:556–563.
- Wang Z, Lopez-Giraldez F, Lehr N, Farre M, Common R, et al. 2014. Global gene expression and focused knockout analysis reveals genes associated with fungal fruiting body development in *Neurospora crassa*. *Eukaryot Cell*. 13:154–169.
- Wu C, Yang F, Smith KM, Peterson M, Dekhang R, et al. 2014. Genome-wide characterization of light-regulated genes in *Neurospora crassa*. *G3 (Bethesda)*. 4:1731–1745.
- Zhang JD, Hatje K, Sturm G, Broger C, Ebeling M, et al. 2017. Detect tissue heterogeneity in gene expression data with BioQC. *BMC Genomics*. 18:277.
- Zhang X, Yazaki J, Sundaresan A, Cokus S, Chan SW, et al. 2006. Genome-wide high-resolution mapping and functional analysis of DNA methylation in *Arabidopsis*. *Cell*. 126:1189–1201.

Communicating editor: J. C. Dunlap