



Since January 2020 Elsevier has created a COVID-19 resource centre with free information in English and Mandarin on the novel coronavirus COVID-19. The COVID-19 resource centre is hosted on Elsevier Connect, the company's public news and information website.

Elsevier hereby grants permission to make all its COVID-19-related research that is available on the COVID-19 resource centre - including this research content - immediately available in PubMed Central and other publicly funded repositories, such as the WHO COVID database with rights for unrestricted research re-use and analyses in any form or by any means with acknowledgement of the original source. These permissions are granted for free by Elsevier for as long as the COVID-19 resource centre remains active.



## Plasma exchange followed by convalescent plasma transfusion in COVID-19 patients

Elham Roshandel<sup>a</sup>, Ghazaleh Sankanian<sup>a</sup>, Maryam Salimi<sup>a</sup>, Arsalan Jalili<sup>a</sup>, Sina Salari<sup>a</sup>, Amir Sadeghi<sup>b</sup>, Seyed Mohammadreza Hashemian<sup>c</sup>, Mohammad Reza Moshari<sup>d</sup>, Ali Pirsalehi<sup>e,\*</sup>, Abbas Hajifathali<sup>a,\*</sup>

<sup>a</sup> Hematopoietic Stem Cell Research Center, Shahid Beheshti University of Medical Sciences, Tehran, Iran

<sup>b</sup> Gastroenterology and Liver Diseases Research Center, Research Institute for Gastroenterology and Liver Diseases, Shahid Beheshti University of Medical Sciences, Tehran, Iran

<sup>c</sup> Chronic Respiratory Diseases Research Center (CRDRC), National Research Institute of Tuberculosis and Lung Diseases (NRITLD), Shahid Beheshti University of Medical Sciences, Tehran, Iran

<sup>d</sup> Anesthesiology Department, Faculty of Medicine, Shahid Beheshti University of Medical Sciences, Tehran, Iran

<sup>e</sup> Department of Internal Medicine, School of Medicine, Shahid Beheshti University of Medical Sciences, Tehran, Iran

### ARTICLE INFO

#### Keywords:

COVID-19  
SARS-CoV-2  
Plasma exchange  
Convalescent plasma

### ABSTRACT

**Background:** Coronavirus disease 2019 (COVID-19) is an emerged pandemic disease with no specific treatment. One of the potential treatments in newly found infectious disease is plasma exchange (PE) with convalescent plasma transfusion (CPT). This case series aimed to evaluate the primary PE and CPT in five Iranian COVID-19 patients.

**Methods:** Five patients with confirmed COVID-19 who had acute respiratory distress syndrome and were supported by mechanical ventilation were treated with two consecutive PE containing fresh frozen plasma (FFP) of healthy donors and 0.9 % saline solution containing 5 % human albumin. Thereafter, CPT was performed just like PE, except that the FFP in this step was substituted with convalescent ABO-matched plasma. Clinical and laboratory factors were evaluated before and after treatments.

**Results:** Three to Four patients showed lower body temperature and improved oxygen saturation as well as reduced laboratory factors such as c-reactive protein, lactate dehydrogenase, creatine phosphokinase (total and myocardial isoform), aspartate aminotransferase, blood urea nitrogen, bilirubin (total and direct), D-dimer, interleukin-6, and CD4<sup>+</sup>/CD8<sup>+</sup> T cells ratio initially after PE and continued to improve so that they were discharged. One patient due to secondary hemophagocytic lymphohistiocytosis and extensive lung fungal infection was expired.

**Discussion:** Overall, the PE followed by CPT was beneficial in reducing acute inflammation led to a considerable improvement in patients' clinical features. It seems that PE along with CPT could provide clearance of pro-inflammatory mediators as well as the positive effects of CPT. Controlled studies are required to confirm the effect of PE/CPT compared with other therapeutic approaches.

### 1. Introduction

The outbreak of coronaviruses has caused three epidemic diseases during the recent two decades, namely, severe acute respiratory syndrome (SARS), Middle East respiratory syndrome (MERS), and coronavirus disease 2019 (COVID-19). These diseases could cause acute lung injury (ALI) and acute respiratory distress syndrome (ARDS) which leads to pulmonary failure and eventually death [1–3]. In December 2019,

COVID-19 emerged in Wuhan, China, and on 11 March 2020 the World Health Organization (WHO) declared it as a pandemic disease [4].

Patients with COVID-19 present clinical symptoms including high fever, dry cough, dyspnea, malaise, fatigue, headache, and gastrointestinal problems. In progressed conditions, patients may suffer from breath shortness, ARDS, and even septic shock, metabolic acidosis, irreversible bleeding, and coagulation dysfunction might develop [5,6]. Massive cytokines overproduction by the immune system in SARS,

\* Corresponding authors.

E-mail addresses: [dr.pirsalehi@gmail.com](mailto:dr.pirsalehi@gmail.com) (A. Pirsalehi), [hajifathali@yahoo.com](mailto:hajifathali@yahoo.com) (A. Hajifathali).

<https://doi.org/10.1016/j.transci.2021.103141>

Received 19 November 2020; Received in revised form 6 April 2021; Accepted 7 April 2021

Available online 20 April 2021

1473-0502/© 2021 Elsevier Ltd. All rights reserved.

MERS, and COVID-19 patients result in a cytokine storm. Cytokine storm is characterized by the release of a series of cytokines like tumor necrosis factor (TNF)- $\alpha$ , interleukin (IL)-1 $\beta$ , IL-2, IL-6, interferon (IFN)- $\alpha$ , IFN- $\beta$ , and IFN- $\gamma$ , that could potentially cause ARDS [7].

Different treatment procedures have been proposed to treat SARS, MERS, and other viral diseases. For COVID-19 patients, however, there is not much experience and mainly supportive care and other treatment procedures for viral diseases could be provided. Suggested therapies include antiviral drugs like lopinavir/ritonavir, remdesivir, ribavirin, and IFN- $\alpha$  to reduce the virus load. Oxygen therapy for respiratory supports, steroids to reduce the severity of inflammatory damages, convalescent plasma (CP) therapy and plasma exchange (PE) are also supportive treatments. PE and CP are two old approaches which was used to treat infectious disease as passive therapy before drug or vaccine development [7–9].

The application of convalescent plasma collected from patients who had recovered from the Ebola virus, SARS-CoV, H5N1 avian influenza, and H1N1 influenza was recommended by WHO as an empirical treatment during outbreaks. Recently, studies have reported that the administration of CP containing neutralizing antibody to patients with COVID-19 and ARDS, could improve their clinical status [10,11].

Moreover, PE is a potential therapeutic procedure in which some amount of plasma is removed to decrease large-molecular weight substances include anti-immune complexes, endotoxins, pathogenic auto-antibodies, cryoglobulins, and protein-binding agents [12]. Noteworthy, TPE also remove the anti-inflammatory mediators and anti-SARS-CoV-2 antibodies that are potentially beneficial for patients [13]. However, due to the inflammatory condition of severe COVID-19 patients, the amount of removed pro-inflammatory mediators are much more than anti-inflammatory molecules. Hence, the overall result of TPE is ameliorating the inflammation through the removal of pro-inflammatory mediators and harmful molecules. It is necessary to replace the discarded plasma with a replacement fluid to avoid hypotension and hypovolemia [14,15]. The 4–5 % human albumin in physiologic saline (0.9 %) is the most common replacement fluid using for PE [16]. Huang C et al. published the first case series of patients infected with COVID-19 and declared that severe conditions in these patients had caused increased plasma cytokine concentrations [17]. Sungim Choi et al. showed that treating a patient with severe fever and thrombocytopenia syndrome (SFTS) complicated by SFTS-associated encephalopathy with 4-day PE followed by two-time CP therapy could successfully decrease the plasma cytokines IFN- $\alpha$ , inducible protein-10 and plasma viral load [18].

In this case series, we used CP from patients recovered from COVID-19 after two cycles of PE to evaluate the effectiveness of PE followed by CP therapy in ameliorating the symptoms and management of the disease in five COVID-19 patients.

## 2. Material and Methods

### 2.1. Patients

This study was conducted in Taleghani Hospital, Tehran, Iran between March and April 2020. The study was approved by the ethics committee from Shahid Beheshti University of Medical Sciences, Tehran, Iran (IR.SBMU.REC.1398.148) and each patient gave written informed consent. Five patients (2 males and 3 females) with COVID-19 were recruited for this study. The patients' age was 48–76 years. The SARS-CoV-2 detection was assessed on nasopharyngeal specimens using a quantitative reverse-transcriptase polymerase chain reaction (qRT-PCR) kit specific for E and N genes of SARS-CoV-2 (OSANG Healthcare, South Korea) based on the manufacturer and WHO guideline. The inclusion criteria in our study include patients with respiratory distress; respiratory rate (RR)  $\geq$  30 beats/min, required mechanical ventilation, oxygen saturation level  $\leq$  90 % in resting-state wearing an oxygen mask, and positive SARS-CoV-2 after antiviral treatment. Allergic patients to

plasma or injectable albumin, patients with severe organ failure, and those who were positive for HBV, HCV, and HIV were excluded from the study. The reason for excluding patients with severe organ failure is that these patients usually receive multimodal treatment (such as dialysis and severe corticosteroids) that could affect the results of PE/CP therapy. Patients continued receiving the conventional treatment (Lopinavir/ritonavir, hydroxychloroquine, azithromycin, steroids, and special treatments for their comorbidities) along with the PE/CP therapy.

### 2.2. Convalescent plasma Donors

The donors had recovered from COVID-19 infection and donated their convalescent plasma after giving written informed consent. All donors showed negative results of the qRT-PCR assay for SARS-CoV-2 (double-checked in different days) and other respiratory viruses. They were also negative for hepatitis B virus, hepatitis C virus, HIV (1 and 2), varicella-zoster virus, cytomegalovirus, herpes simplex virus (I and II), Epstein-Barr virus, toxoplasma and syphilis antigens/IgM antibody at the time of plasma donation. The donors were men between the ages of 30 and 67 years and had been afebrile with alleviated respiratory symptoms for at least 14 days after the second negative SARS-CoV-2 result. The donors were checked for SARS-CoV-2 specific immunoglobulin G (IgG) and IgM in serum. The titration of IgG and IgM on donor serum was performed using commercial ELISA kits (PishtazTeb, Iran). Briefly, 100  $\mu$ L of titrated serum or positive/negative control was added to the pre-coated wells and incubated for 30 min. at a 37 °C incubator. The wells were washed five times with the working wash solution and 100  $\mu$ L of HRP-conjugated anti-human IgG/IgM was added to the wells for an extra 30 min. at 37 °C incubation. After a five-time wash, 100  $\mu$ L chromogen-substrate solution was dispensed to the wells and incubated for 15 min. at room temperature in dark. The reaction was stopped by addition of 100  $\mu$ L stop solution, and the optical density was read at 450 nm. The sensitivity and specificity of the IgG and IgM kits are 94.1 %, 98.3 %, 79.4 %, and 97.3 %, respectively. Donors with IgM titer lower than 1:10 and IgG titer higher than 1:1000 were selected for plasma donation. Approximately, 600–900 mL of CP were collected from each donor and infused (exchanged with their plasma) on the same day to the patients (Table 1). All mentioned donor tests were performed before the day of CP collection.

### 2.3. Therapeutic plasma exchange

A total of 1500–2000 mL of patients' plasma was replaced with an equal amount of solution containing the same proportions of 0.9 % saline with 5 % human albumin (Biotest, Germany) and ABO-compatible fresh frozen plasma (FFP) from healthy donors for two consecutive days. The plasma volume (PV) for each patients was calculated using the following formula [19,20]:  $PV = 0.065 \times \text{weight (kg)} \times (1 - \text{hematocrit})$ . Due to the critical status of patients such as cardiovascular disorders and coagulopathy, the plasma volume replaced for all patients was less than

**Table 1**  
Characteristics and specific antibody titer of convalescent plasma of donors.

Characteristic	Donors				
	<u>1</u>	<u>2</u>	<u>3</u>	<u>4</u>	<u>5</u>
Sex	Male	Male	Male	Male	Male
Age (year)	30	66	30	67	32
Blood group	A+	O+	O+	A+	A+
Interval between symptom onset and discharge (day)	10	17	19	20	12
Interval between discharge and plasma donation (day)	16	20	17	16	22
Total donated plasma volume (mL)/cycle	900/3	600/1	700/1	750/1	650/1
SARS-CoV-2 specific IgM titer	1:1400	1:2200	1:1800	1:1600	1:1600
SARS-CoV-2 specific IgG titer	1:6	1:8	1:6	1:4	1:8

one PV (0.75 PV). The day after second PE, CP therapy was performed just like PE, except that the FFP in this step was substituted with convalescent ABO-matched plasma. All the PE and CP therapy was performed using the apheresis system (MCS 3 P, Haemonetics, Braintree, MA). In one case (patient 1), two doses of 200 mL convalescent plasma were infused to the patient at two consecutive days after CP therapy.

#### 2.4. Evaluation of clinical and laboratory features

Demographic and primary clinical data of patients, such as principal symptoms, comorbidities, intervals between symptom onset and admission as well as therapy onset, and given treatments were collected. Clinical and laboratory findings, including body temperature, oxygen saturation, C-reactive protein (CRP), lactate dehydrogenase (LDH), creatine phosphokinase (CPK), creatine kinase myocardial band (CK-MB), aspartate aminotransferase (AST), alanine aminotransferase (ALT), blood urea nitrogen (BUN), creatinine (Cr), total and direct bilirubin, fibrinogen, D-dimer, white blood cell (WBC), and platelet (PLT) count were measured before and several days after therapy (PE and CP). The number of CD4 + T and CD8 + T cells, as well as serum IL-6, were measured before and after the treatment procedure.

Patient fresh blood samples were collected from COVID-19 patients. Plasma, serum, and whole blood were used based on the purpose of the study. Serum concentrations of IL-6 were measured by electrochemiluminescent immunoassay (ECLIA) method using the Elecsys IL-6 kit (Roche Diagnostics, Basel, Switzerland) according to the manufacturer protocol. The analytical sensitivity of the kit was 1.5 pg/mL. The number of CD3+ (APC-conjugated), CD4+ (PE-conjugated), and CD8+ (FITC-conjugated), all from BD Bioscience, USA) cells were measured on lymphocyte population using flow cytometry (BD FACSLyric, BD Bioscience, USA).

The computed tomography (CT) scan of patients' lung were

performed before the first PE and after the CP therapy.

### 3. Results

In the present case series, five patients (age 48–76 years) in the critical stage were chosen for PE and CP therapy. All patients' comorbidity beside COVID-19 were treated accordingly. One male patient was diagnosed with CLL. All patients were supported by an oxygen mask and are currently alive except for one (patient 4) who developed secondary hemophagocytic lymphohistiocytosis (sHLH) before the PE/CP therapy as well as an extensive lung fungal infection, despite anti-fungal treatment and intubation. PE was performed within 10 days post-admission (1–9 days), except patient 4 for which the onset of PE was one month after her admission. Antiviral and antibacterial treatments were prescribed for all patients, while steroid and anti-fungal treatments were administered based on the patients' conditions (Table 2). Patient 1, experienced a myocardial infarction (MI) before PE/CP therapy and underwent cardiopulmonary resuscitation as well as medical treatment (furosemide). He also received two extra infusions of CP due to his heart failure.

Six time-points were considered to assess the treatment responses, comprising the day before the first PE (day 0, before treatment), day after first PE (day 2), day after second PE and before CP therapy (day 3) to assess the effect of PE, one day after CP therapy (day 4), four days after CP therapy (day 7), and one week after CP therapy (day 11). The body temperature of patients was between 37.5 and 38.6 °C prior to treatment and decreased to normal range in 4 alive patients (36.7–37 °C). Oxygen saturation with oxygen mask was between 68 and 90 % before PE and raised time-dependently to ≥97 % in 4 alive patients (Table 3 and Fig. 1A and B). Fever of patient 4 was eliminated after PE/CP therapy and also oxygen saturation increased in initial days, but then started to get worst in days later. The laboratory findings such as CRP, LDH, CPK, CK-MB, AST, BUN, total and direct bilirubin, and D-dimer

**Table 2**  
Clinical characteristics of COVID-19 patients.

Clinical Characteristics	Patients				
	<u>1</u>	<u>2</u>	<u>3</u>	<u>4</u>	<u>5</u>
Sex	Male	Female	Male	Female	Female
Age	55	48	76	71	62
Weight	80	67	72	52	60
Blood Group	A <sup>+</sup>	O <sup>+</sup>	O <sup>+</sup>	A <sup>+</sup>	A <sup>+</sup>
Smoking history	No	No	No	No	No
Principal symptoms	Shortness of breath	Cough, Shortness of breath	Cough, Shortness of breath	Cough, Fever, Shortness of breath, Sputum	Cough, Shortness of breath, Chest pain
Comorbidity	Hypothyroidism MI	Diabetes	Anemia, CLL, Hypertension	sHLH	Diabetes, Asthma, Hypertension, Hypercholesterolemia CABG
Disease severity <sup>1</sup>	Critical	Critical	Critical	Critical	Critical
Mechanical Ventilation	Mask	Mask	Mask	Mask/Intubation	Mask
Duration (day)	10	13	18	34/3	8
Interval between symptom onset and admission (day)	20	NA	30	16	NA
Interval between admission and plasma exchange (day)	1	3	9	30	3
Interval between admission and convalescent plasma transfusion (day)	4	6	12	33	6
Bacterial/viral/fungal infection	Yes/Yes/No	Yes/Yes/No	Yes/Yes/No	Yes/Yes/Yes	Yes/Yes/No
Length of admission (day)	12	13	20	38	10
Current status	Alive /discharged	Alive /discharged	Alive/ discharged	Dead	Alive/ discharged
<b>Treatments</b>					
Steroids	Yes	Yes	Yes	Yes	No
Antiviral	Yes	Yes	Yes	Yes	Yes
Antibiotic/antifungal	Yes/No	Yes/No	Yes/No	Yes/Yes	Yes/No
Other treatments <sup>2</sup>	Yes	No	Yes	Yes	Yes

MI. Myocardial infarction; CLL. Chronic lymphocytic leukemia; sHLH. Secondary Hemophagocytic lymphohistiocytosis; CABG. Coronary artery bypass grafting; NA. Not available.

<sup>1</sup> Patients with respiratory problem requiring ventilation support, have comorbidity and requiring intensive care.

<sup>2</sup> Treatments based on the comorbidity of patients.

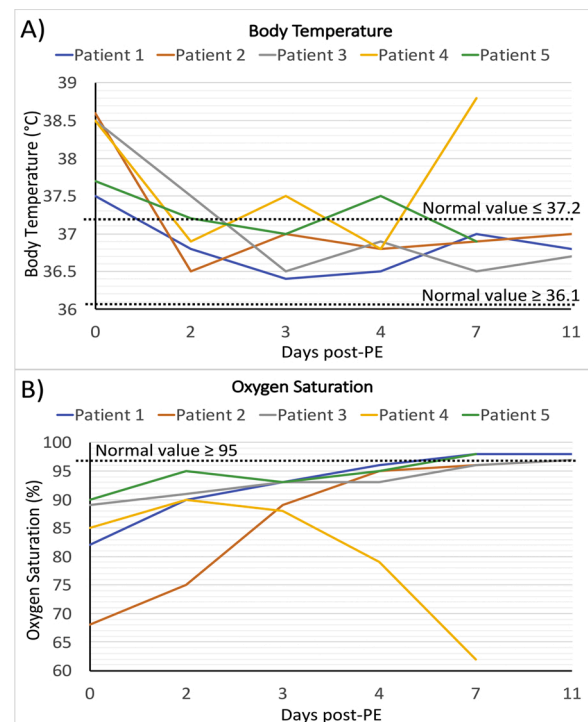
**Table 3**  
Clinical and laboratory findings before and after PE/CP therapy.

Clinical findings	Patients				
	1	2	3	4	5
<b>Body temperature (°C)</b>					
Before first PE	37.5	38.6	38.5	38.5	37.7
Before second PE	36.8	36.5	37.5	36.9	37.2
Before CPT	36.4	37	36.5	37.5	37
Day 1 After CPT	36.5	36.8	36.9	36.8	37.5
Day 4 after CPT	37	36.9	36.5	38.8	36.9
Day 7 after CPT	36.8	37	36.7	NA	NA
<b>Oxygen saturation (%)</b>					
Before first PE	82	68	89	85	90
Before second PE	90	75	91	90	95
Before CPT	93	89	93	88	93
Day 1 After CPT	96	95	93	79	95
Day 4 after CPT	98	96	96	62	98
Day 7 after CPT	98	97	97	NA	NA
<b>Laboratory findings</b>					
<b>C-reactive protein (mg/L)</b>					
Before first PE	45	18	80	3.2	20
Before second PE	38	6	NA	NA	16
Before CPT	21	3	69	3	9
Day 1 After CPT	28	NA	61	NA	5
Day 4 after CPT	15	5	54	18	6
Day 7 after CPT	5	4	11	NA	NA
<b>Lactate dehydrogenase (IU/L)</b>					
Before first PE	1338	1430	1124	897	816
Before second PE	642	1253	836	NA	462
Before CPT	649	1122	690	612	414
Day 1 After CPT	602	905	553	715	512
Day 4 after CPT	674	851	479	950	603
Day 7 after CPT	557	704	576	NA	NA
<b>Creatine phosphokinase (IU/L)</b>					
Before first PE	369	143	254	74	74
Before second PE	NA	161	NA	NA	91
Before CPT	120	132	228	NA	68
Day 1 After CPT	118	NA	NA	71	39
Day 4 after CPT	95	167	78	91	45
Day 7 after CPT	46	NA	NA	NA	NA
<b>Creatine kinase-myocardial band (IU/L)</b>					
Before first PE	71	32	41	11	17
Before second PE	NA	28	NA	NA	25
Before CPT	27	25	39	NA	19
Day 1 After CPT	26	NA	NA	18	12
Day 4 after CPT	24	24	21	21	18
Day 7 after CPT	18	NA	NA	NA	NA
<b>Alanine aminotransferase (IU/L)</b>					
Before first PE	66	28	32	28	73
Before second PE	35	20	NA	NA	40
Before CPT	30	22	50	29	35
Day 1 After CPT	35	21	54	23	22
Day 4 after CPT	30	23	58	10	69
Day 7 after CPT	12	31	24	NA	NA
<b>Aspartate aminotransferase (IU/L)</b>					
Before first PE	111	42	50	11	43
Before second PE	38	36	NA	NA	26
Before CPT	27	32	45	12	14
Day 1 After CPT	26	42	42	58	29
Day 4 after CPT	21	31	22	64	54
Day 7 after CPT	20	26	19	NA	NA
<b>Blood urea nitrogen (mg/dL)</b>					
Before first PE	29	24.7	21	29.8	52
Before second PE	29	24	21	NA	64
Before CPT	37	23	19	19	63
Day 1 After CPT	23	22	20	64	68
Day 4 after CPT	28	15	22	58	63
Day 7 after CPT	24	16	17	NA	NA
<b>Creatinine (mg/dL)</b>					
Before first PE	0.9	1.03	0.9	0.71	1.7
Before second PE	0.9	0.9	0.8	NA	1.7
Before CPT	0.8	0.8	0.8	0.8	1.7
Day 1 After CPT	0.9	NA	0.9	1.5	1.7
Day 4 after CPT	1.1	0.80	1	0.9	1.8
Day 7 after CPT	0.9	0.76	0.8	NA	NA
<b>Total bilirubin (mg/dL)</b>					

**Table 3 (continued)**

Clinical findings	Patients				
	1	2	3	4	5
<b>Before first PE</b>	3.4	0.8	1.2	0.6	2
<b>Before second PE</b>	2	0.8	1	NA	0.9
<b>Before CPT</b>	1.1	0.7	NA	0.4	0.6
<b>Day 1 After CPT</b>	1.5	0.8	0.9	1	NA
<b>Day 4 after CPT</b>	1	0.8	0.6	NA	0.5
<b>Day 7 after CPT</b>	0.8	0.5	0.9	NA	NA
<b>Direct bilirubin (mg/dL)</b>					
Before first PE	2.9	0.2	0.5	0.2	1.2
Before second PE	1.6	0.4	0.5	NA	0.4
Before CPT	0.7	0.4	NA	0.2	0.3
Day 1 After CPT	0.9	0.3	0.4	0.6	NA
Day 4 after CPT	0.8	0.3	0.3	NA	0.2
Day 7 after CPT	0.4	0.2	0.3	NA	NA
<b>Fibrinogen (mg/dL)</b>					
Before first PE	186	332	346	NA	269
Before second PE	161	269	255	173	340
Before CPT	151	NA	210	NA	NA
Day 1 After CPT	194	186	303	NA	303
Day 4 after CPT	NA	210	180	NA	220
Day 7 after CPT	167	346	173	NA	NA
<b>D-dimer (mg/dL)</b>					
Before first PE	0.40	12	3.8	2.9	14
Before second PE	0.30	9.1	NA	1.3	6
Before CPT	1	7.2	1	0.4	5
Day 1 After CPT	0.5	6.4	2.9	NA	9
Day 4 after CPT	8	2	3.3	NA	7
Day 7 after CPT	2.3	1.1	1.6	NA	NA
<b>IL-6 (pg/mL)</b>					
Before PE	53.68	69.29	42.5	109.4	69.07
Before CPT	7.86	4.27	20.43	52.4	14.55
Day 7 After CPT	3.52	3.66	5.98	NA	NA

NA. Not available; PE. Plasma exchange; CPT. Convalescent plasma transfusion.



**Fig. 1.** Trends of body temperature and oxygen saturation. Trends of changes in body temperature (A) and oxygen saturation (B), in different time-points. The day before the first PE was considered as day 0. Values in day 0, 2, 3, 4, 7, and 11 are attributed to the baseline value (the day before the first PE), before second PE, before CP, one day post-CP, 4 days post-CP, and one week post-CP, respectively. Each line represents a patient. Normal range is illustrated as dashed lines in each figure.

were high in patients before treatments and started to decrease toward normal range in 3–4 of patients after treatment (Table 3). The majority of these inflammatory factors were decreased after the first and second PEs and continue to decrease after CP therapy (Table 3). CPK and CK-MB were considerably high in patient 1 who had MI, however, they fell to the normal range following PE and remained normal in the next days. ALT levels in patients 1 and 5 were high and came into the normal range after first PE. Creatine and fibrinogen levels were in the normal range in patients (Table 3). As the treatment proceeds, the CRP level showed a decreasing trend for all patients, except for patient 4 which was in the normal range and increased 4 days after CP transfusion (Fig. 2A). The serum level of IL-6 as a key inflammatory cytokine in COVID-19 was measured in patients before and after PE/CP therapy. The level of IL-6 in patients was 6–15 times higher than the normal level prior to treatment. PE eliminated more than half of IL-6 and CP therapy further decreased IL-6 to normal range in 3 patients (Fig. 2B).

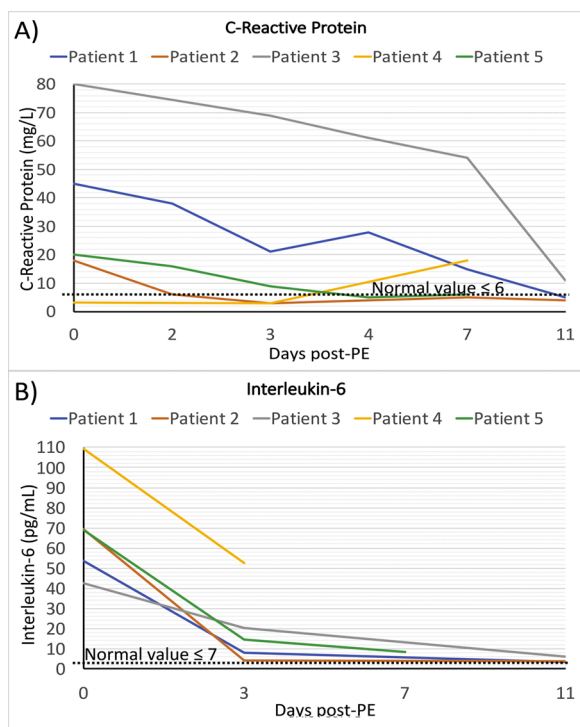
WBC of two patients increased post-CP transfusion and the others showed subtle changes during the treatment. Lymphocyte and neutrophil percent increased and decreased, respectively in 4 patients in a time-dependent manner. PLT count remained high in patient 1 and reached high in the patient 2 post-CP therapy, while it fell in the patient 4 after treatment. Patient 3 showed a fall in PLT count after PE but got back to normal range 4 days after CP. The absolute number of total T cells, CD4 + T cells, and CD8 + T cells increased in patients 1, 2, and 5 after PE and CP therapy. CD4 + T cells/ CD8 + T cells ratio was increased in patients 1 and 5 after treatment, while it slightly decreased in patients 2 and 3 (Table 4).

The CT scan of patients, generally, showed sever pneumonia and ground-glass opacity before the treatment (Fig. 3). An overall resolution of the pulmonary lesions is seen in the patients' lung after the treatment. Patient 1 illustrated a significant improvement in CT scan and the others

**Table 4**  
Blood cell findings before and after PE/CP therapy.

Blood cell findings	Patients				
	1	2	3	4	5
<b>White blood cell count (×1000/μL)</b>					
Before first PE	12.20	9.3	15.9	20.1	10.8
Before second PE	13.34	10.4	NA	19.9	10.8
Before CPT	13.1	12.5	16.9	12.9	10.6
Day 1 After CPT	11.9	15.8	19.6	19	11
<b>Lymphocyte percent (%)</b>					
Before first PE	8	9	71	10	5
Before second PE	6	10	NA	2	6
Before CPT	10	10	87	2	9
Day 1 After CPT	13	11	88	3	8
Day 4 after CPT	14	12	89	5	14
Day 7 after CPT	33	15	82	NA	NA
<b>Neutrophil percent (%)</b>					
Before first PE	90	85	25	95	91
Before second PE	83	88	NA	95	84
Before CPT	85	85	6	96	80
Day 1 After CPT	85	85	7	95	82
Day 4 after CPT	88	78	10	92	76
Day 7 after CPT	62	80	13	NA	NA
<b>Platelet count (×1000/μL)</b>					
Before first PE	529	302	121	186	155
Before second PE	466	252	73	74	163
Before CPT	453	216	83	52	180
Day 1 After CPT	563	282	84	55	203
Day 4 after CPT	685	481	125	27	235
Day 7 after CPT	491	669	177	NA	NA
<b>T cell count/μL, (%)</b>					
Before PE	429, (39)	646, (64)	466, (5)	273, (74)	474, (60)
After CPT	723, (54)	753, (54)	361, (2)	NA	1500, (67)
<b>CD4<sup>+</sup> T cell count/μL, (%)</b>					
Before PE	297, (27)	524, (52)	280, (3)	213, (58)	308, (39)
After CPT	535, (40)	595, (41)	180, (1)	NA	1074, (48)
<b>CD8<sup>+</sup> T cell count/μL, (%)</b>					
Before PE	121, (11)	111, (11)	186, (2)	44, (12)	189, (24)
After CPT	174, (13)	145, (10)	180, (1)	NA	447, (20)
<b>CD4<sup>+</sup> T cell/CD8<sup>+</sup> T cell ratio (%)</b>					
Before PE	2.45	4.7	1.5	4.8	1.63
After CPT	3.07	4.1	1	NA	2.40

NA. Not available; PE. Plasma exchange; CPT. Convalescent plasma transfusion.

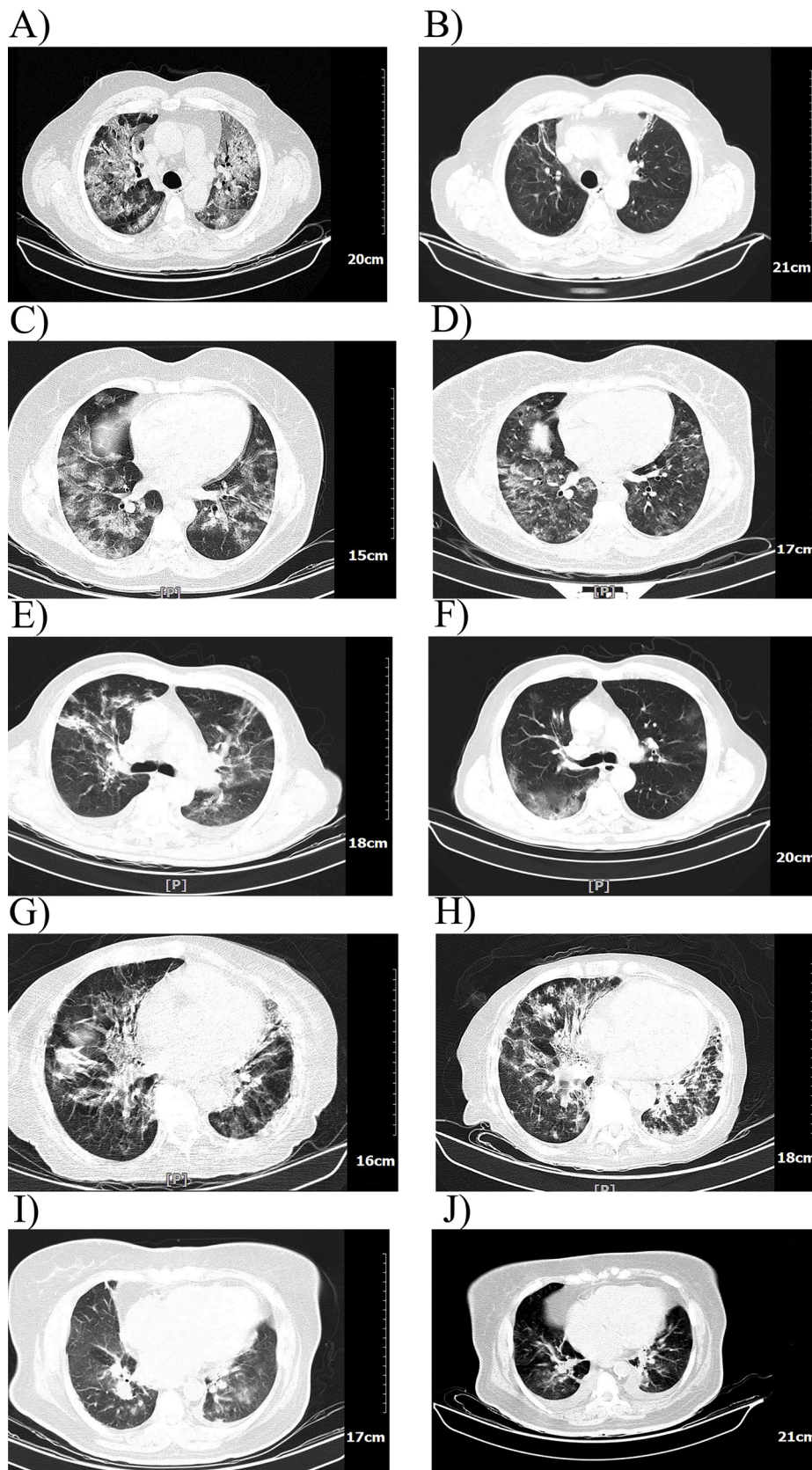


**Fig. 2.** Trends of CRP and IL-6 levels. Trends of changes c-reactive protein (CRP) level (C), and IL-6 level (D) in different time-points. The day before the first PE was considered as day 0. Values in day 0, 2, 3, 4, 7, and 11 are attributed to the baseline value (the day before the first PE), before second PE, before CP, one day post-CP, 4 days post-CP, and one week post-CP, respectively. Each line represents a patient. Normal range is illustrated as dashed lines in each figure.

showed an acceptable lesion healing after the PE/CP therapy (Fig. 3).

**4. Discussion**

Most studies identified ARDS as the leading cause of death in COVID-19 patients [16]. The immune dysregulation in SARS-CoV-2 infection causes uncontrolled systemic inflammatory responses and releases an extensive amount of pro-inflammatory cytokines and chemokines called cytokine storm [17,21,22]. The cytokine storm can provoke the immune response against organs that cause organ failure and ARDS which could be fatal [23]. Hence, one of the potential treatment in such an acute inflammation is removing the inflammatory mediators through PE [24]. Accordingly, researchers are performing PE along with the other treatments such as steroids and showed beneficial effects in decreasing inflammatory mediators in COVID-19 [23,24]. Similar studies in ARDS caused by other etiologies reported respiratory function improvement by decreasing the inflammation following PE [26–28]. Basically, PE is the substitution of the patients' plasma with FFP from healthy donors [29]. This technique is widespread to reduce the concentration of cytokines and inflammatory mediators. It could be used even in



**Fig. 3.** Computed tomography (CT) scan of the lung of patients. The CT scan of the lung of patients before (A, C, E, G, I) and 4-9 days after the first plasma exchange (B, D, F, H, J) is illustrated. The images are in the order of the patients.

non-infectious inflammation [30]. FFP used in the PE could decrease the inflammatory cytokines and modulate the hypercoagulation by providing the ADAMTS13 enzyme [29]. In the case of COVID-19, it has been shown that PE alone was able to modulate the hyperinflammatory state and reduce mortality [31].

On the other hand, CP therapy is commonly used in infectious diseases [10,27]. CP is enriched with neutralizing antibodies against certain infectious agents and could be beneficial in controlling the infectious agent [32]. So, the purposes of PE therapy and CP therapy are different. In the case of COVID-19, which is a hyper-inflammation following an infectious disease, we can reduce the inflammation using PE and then provide neutralizing antibodies using CP therapy [32]. CP as a replacement for patients' plasma could afford the blood proteins and enriched the patient's plasma with anti-SARS-CoV-2 antibodies [33, 34]. Several case studies have shown the effectiveness of CP therapy in COVID-19, two most prominent of which are Duan et al. [27] and Shen et al. [10] studies. In the first study, 10 patients were given CP and 3 patients showed improvement of respiratory status and laboratory parameters [35]. The latter study, showed fever alleviation within three days post-CP transfusion while Sequential Organ Failure Assessment (SOFA) score, oxygen saturation, and inflammatory parameters (CRP, procalcitonin, and IL-6) improved after 10 days post-treatment [10]. High levels of IL-6 and CRP are reported to be associated with mortality in COVID-19 [10]. PE could decrease the inflammatory factors through plasma clearance, while CP therapy could afford neutralizing antibodies against SARS-CoV-2. Recent reports have provided recommendations regarding CP therapy in COVID-19 [33,34]. Noteworthy, it has been proposed that CP therapy is better to combine with PE to achieve a better result [36]. Thrombocytopenia, organ failure and a high level of LDH in COVID-19 patients are in common with thrombocytopenia-associated multiple organ failure (TAMOF) in which rapid PE could significantly improve the outcomes [37]. Kesici et al. recommended that performing PE along with CP transfusion could provide clearance of pro-inflammatory cytokines as well as the positive effects of CP transfusion [36].

In the present study, we performed PE twice consecutively to reduce the inflammatory mediators and alleviate acute inflammation. As expected, both first and second PE decreased the concentration of inflammatory mediators. These results were parallel to the findings of other studies and suggested the benefit of PE to mitigate the hyper-inflammatory conditions [18,36,38]. Thereafter, to further decrease the inflammatory mediators as well as supplement the patients' blood with plasma proteins and specific anti-SARS-CoV-2 antibodies, in the third cycle of PE, the FFP was substituted by CP. The blood group-matched donors were evaluated carefully to confirm the negative SARS-CoV-2 infection for at least two weeks and also having high titers of IgG antibody against SARS-CoV-2. Interestingly, the patients that have been chosen for PE/CP therapy had either A<sup>+</sup> (three patients) and O<sup>+</sup> (two patients) blood group. Studies about the association of ABO blood group with the susceptibility to COVID-19 and its clinical outcomes are controversial. Generally, it has been stated that the blood group A<sup>+</sup> might be associated with higher COVID-19 susceptibility and more unfavorable outcomes [39–41]. On the other hand, blood group O is believed to have the lowest risk of COVID-19 [38,40]. However, evidence suggests that the COVID-19 severity is not associated with the ABO blood group [40]. Regarding the high frequency of blood groups, A<sup>+</sup> and O<sup>+</sup> in the Iranian population [42], it seems normal to have a high frequency of A<sup>+</sup> and O<sup>+</sup> patients. As the results illustrated, the inflammatory factors such as CRP, LDH, D-dimer, and IL-6 are decreased following the PE/CP therapy cycles indicating the inflammation subsidence. IL-6, CRP, and coagulation parameters such as D-dimer are reported to be hallmarks of COVID-19, and reducing these factors correlates with better prognosis of patients [17,43,44]. Moreover, the body temperature and oxygen saturation which are the two most critical parameters in COVID-19 were improved after PE/CP therapy showing the efficacy of the treatment. Patient 4 manifested alleviated fever after

PE. However, her body temperature raised several days after CP therapy, which might be due to the sHLH and fungal infection. Regarding the received steroids and antipyretic medications, the exact role of PE/CP therapy in the management of fever is difficult to interpret. However, PE/CP therapy might reduce the fever by decreasing the pyrogenic mediators such as IL-6 and inflammatory molecules [45]. Parallel to the laboratory findings, the lung CT scans showed considerable improvements in lesions after PE/CP therapy. The resolution of lesions in the lung occurs gradually as we can see in the Fig. 3 that the CT scans which has been taken beyond one week post-CP therapy (patient 1 and 3) showed more lesion healing and less involvement in the lung.

One patient (patient 4) did not respond well to the treatment and expired due to the extensive lung fungal infection. One explanation for her unresponsiveness could be the late onset of treatment (one-month post-admission). Although PE is recommended for sHLH, the right time of treatment onset is a critical factor to determine the response of the patient. As can be seen in results, the initial response of the patients post-PE was promising, but the fungal infection that spread throughout the lung despite anti-fungal treatment led to respiratory distress and death. PE was performed within 10 days post-admission (1–9 days), except patient 4 for which the onset of PE was one month after her admission. One possible reason for the unresponsiveness of patient 4 might be the delay in the onset of PE/CP therapy. It has been reported that PE/CP therapy is more effective when used at the early stages of the disease [34]. Accordingly, several clinical and laboratory findings of patient 4 contrasted the others. Putting patient 4 aside, the other patients showed satisfactory responses to the treatment resulted in negative PCR results and discharge of patients even one week after CP therapy (patient 5). This study has several limitations. The small sample size and uncontrolled method of the study are the most important limitations. The result that comes from such a small sample size could not be conclusive enough. However, Regarding the fact that the overall result is parallel to the findings of other studies, it could be indicative of the beneficial effects of PE/CP therapy in COVID-19 patients. The other limitation was the missing data that was too many for such a small data set. Regarding the emergency condition of the COVID-19 pandemic and the expiration of patient 4, missing data was increased. There were confounding factors such as concurrent antiviral, antibacterial, and steroid therapies that made the actual effects of PE/CPT unclear. Due to the necessity of receiving such medications, cutting them could have threatened the lives of COVID-19 patients.

Despite the promising result of PE/CP therapy in COVID-19 patients, the question is: Can this method be widely used for COVID-19 patients? Although PE/CP therapy is capable of resolving inflammation, its potential survival benefit is still a matter of debate [31,13]. PE/CP therapy is a laborious strategy that might not worth to be used in regular COVID-19 patients. It might be a method of choice for those patients who are refractory to less laborious conventional therapies.

## 5. Conclusion

To sum up, our study is in line with the previous findings and is suggestive of possible benefit of CP therapy in COVID-19 patients. It also suggests PE cycles prior to CP transfusion as a possible complementary treatment in critical patients to reduce the inflammation and then replenish the patients' plasma with SARS-CoV-2-specific antibody-containing plasma. Further controlled investigations with larger sample size are required to prove the efficacy of the suggested protocol compared to the other conventional therapies.

## Authorship contributors

A.P., S.S., E.R., A.H.; Participated in designed experiments and critical revision of the manuscript; G.S, M.S., A.J., A.S; performed process treatment. S.M.H., M.R.M.; data collection and analyzed the data. All authors revised the manuscript and approved the final paper



## Funding

This research did not receive any specific grant from funding agencies in the public, commercial, or not-for-profit sectors.

## Declaration of Competing Interest

The authors declare no conflict of interest.

## Acknowledgment

The authors would like to thank the staff of the Hematopoietic Stem Cell Research Center, Shahid Beheshti University of Medical Sciences, Tehran, Iran for providing the possibility of performing the study.

## References

- [1] Yi CW, Ching SC, Yu JC. The outbreak of COVID-19: an overview. 2020.
- [2] Li G, Fan Y, Lai Y, Han T, Li Z, Zhou P, et al. Coronavirus infections and immune responses. *J Med Virol* 2020;92:424–32. <https://doi.org/10.1002/jmv.25685>.
- [3] Shereen MA, Khan S, Kazmi A, Bashir N, Siddique R. COVID-19 infection: origin, transmission, and characteristics of human coronavirus. *J Adv Res* 2020;24:91–8. <https://doi.org/10.1016/j.jare.2020.03.005>.
- [4] Hatipoğlu N. The "new" problem of humanity: new coronavirus (2019-nCoV/COVID-19) disease. *Medical J. Bakirkoy*. 2020;16. <https://doi.org/10.5222/BMJ.2020.22931>.
- [5] Chen ZM, Fu JF, Shu Q, Chen YH, Hua CZ, Li FB, et al. Diagnosis and treatment recommendations for pediatric respiratory infection caused by the 2019 novel coronavirus. *World J Pediatr* 2020;1–7. <https://doi.org/10.1007/s12519-020-00345-5>.
- [6] Li X, Geng M, Peng Y, Meng L, Lu S. Molecular immune pathogenesis and diagnosis of COVID-19. *J Pharm Anal* 2020;10(2):102–8. <https://doi.org/10.1016/j.jpha.2020.0>.
- [7] Yi Y, Lagniton PN, Ye S, Li E, Xu R-H. COVID-19: what has been learned and to be learned about the novel coronavirus disease. *Int J Biol Sci* 2020;16:1753. <https://doi.org/10.7150/ijbs.45134>.
- [8] Casadevall A, Pirofski L-a. The convalescent sera option for containing COVID-19. *J Clin Invest* 2020;130:1545–8. <https://doi.org/10.1172/JCI138003>.
- [9] Bakshshaei P, Kazemi MH, Golar M, Abdolmaleki S, Khosravi-Eghbal R, Khoshnoodi J, et al. Investigation of the cellular immune response to recombinant fragments of filamentous hemagglutinin and pertactin of Bordetella pertussis in BALB/c mice. *J Interferon Cytokine Res* 2018;38:161–70. <https://doi.org/10.1089/jir.2017.0060>.
- [10] Shen C, Wang Z, Zhao F, Yang Y, Li J, Yuan J, et al. Treatment of 5 critically ill patients with COVID-19 with convalescent plasma. *JAMA* 2020;323:1582–9. <https://doi.org/10.1001/jama.2020.4783>.
- [11] Roback JD, Guarnier J. Convalescent plasma to treat COVID-19: possibilities and challenges. *JAMA* 2020. <https://doi.org/10.1001/jama.2020.4940>.
- [12] Kaplan AA. Therapeutic plasma exchange: a technical and operational review. *J Clin Apher* 2013;28:3–10. <https://doi.org/10.1002/jca.21257>.
- [13] Lu W, Kelley W, Fang DC, Joshi S, Kim Y, Paroder M, et al. The use of therapeutic plasma exchange as adjunctive therapy in the treatment of coronavirus disease 2019: a critical appraisal of the current evidence. *J Clin Apher* 2021;12(February). <https://doi.org/10.1002/jca.21883>. doi: 10.1002/jca.21883.
- [14] Reeves HM, Winters JL. The mechanisms of action of plasma exchange. *Br J Haematol* 2014;164:342–51. <https://doi.org/10.1111/bjh.12629>.
- [15] Winters JL. Plasma exchange: concepts, mechanisms, and an overview of the American Society for Apheresis guidelines, Hematology 2010. Book 2012;2012: 7–12. <https://doi.org/10.1182/asheducation.V2012.1.7.3797920>.
- [16] Pusey C, Dash C, Garrett M, Gascoigne E, Gesinde M, Gillanders K, et al. Experience of using human albumin solution 4–5% in 1195 therapeutic plasma exchange procedures. *Transfus Med* 2010;20:244–9. <https://doi.org/10.1111/j.1365-3148.2010.00999.x>.
- [17] Huang C, Wang Y, Li X, Ren L, Zhao J, Hu Y, et al. Clinical features of patients infected with 2019 novel coronavirus in Wuhan, China. *Lancet* 2020;395:497–506. [https://doi.org/10.1016/S0140-6736\(20\)30183-5](https://doi.org/10.1016/S0140-6736(20)30183-5).
- [18] Choi S, Kim Mc, Kwon Js, Kim Jy, Lee Kh, Kim SH. Case report: use of plasma exchange followed by convalescent plasma therapy in a critically ill patient with severe fever and thrombocytopenia syndrome-associated encephalopathy: cytokine/chemokine concentrations, viral loads, and antibody responses. *Am J Trop Med* 2018;99:1466–8. <https://doi.org/10.4269/ajtmh.17-0766>.
- [19] Schmidt JJ, Asper F, Einecke G, Eden G, Hafer C, Kielstein JT. Therapeutic plasma exchange in a tertiary care center: 185 patients undergoing 912 treatments—a one-year retrospective analysis. *BMC Nephrol* 2018;19(1):1–7. <https://doi.org/10.1186/s12882-017-0803-3>.
- [20] Kaplan AA. A simple and accurate method for prescribing plasma exchange. *ASAIO J* 1990;36(3). M597-9. PMID: 2252761.
- [21] Channappanavar R, Perlman S. Pathogenic human coronavirus infections: causes and consequences of cytokine storm and immunopathology. *Semin Immunopathol* 2017:529–39. <https://doi.org/10.1007/s00281-017-0629-x>.
- [22] Khorramdelazad H, Kazemi MH, Najafi A, Keykhaee M, Emameh RZ, Falak R. Immunopathological similarities between COVID-19 and influenza: investigating the consequences of Co-infection. *Microb Pathog* 2020;104554. <https://doi.org/10.1016/j.micpath.2020.104554>.
- [23] Xu Z, Shi L, Wang Y, Zhang J, Huang L, Zhang C, et al. Pathological findings of COVID-19 associated with acute respiratory distress syndrome. *Lancet Respir Med* 2020;8:420–2. [https://doi.org/10.1016/S2213-2600\(20\)30076-X](https://doi.org/10.1016/S2213-2600(20)30076-X).
- [24] Alexander V, Zachariah U, Goel A, Kandasamy S, Chacko B, Punitha JV, et al. Low-volume plasma exchange and low-dose steroid to treat secondary hemophagocytic lymphohistiocytosis: a potential treatment for severe COVID-19? *Current Med* 2020;18:77. <https://doi.org/10.4103/ami.cmi.48.20>.
- [25] Matsuda K, Moriguchi T, Oda S, Hirasawa H. Efficacy of continuous hemodiafiltration with a cytokine-adsorbing hemofilter in the treatment of acute respiratory distress syndrome. *Acute Blood Purif* 2010;83–92. <https://doi.org/10.1159/000314856>.
- [26] Geri G, Terrier B, Heshmati F, Moussaoui H, Massot J, Mira JP, et al. Effect of plasma exchange in acute respiratory failure due to Anti-neutrophil cytoplasmic antibody-associated vasculitis. *Crit Care* 2018;22:1–3. <https://doi.org/10.1186/s13054-018-2264-x>.
- [27] Patel P, Nandwani V, Vanchiere J, Conrad SA, Scott LK. Use of therapeutic plasma exchange as a rescue therapy in 2009 pH1N1 influenza A—an associated respiratory failure and hemodynamic shock. *Crit Care Med* 2011;12:e87. <https://doi.org/10.1097/PCC.0b013e3181e2a569>.
- [28] Focosi D, Anderson AO, Tang JW, Tuccori M. Convalescent plasma therapy for COVID-19: state of the art. *Clin Microbiol Rev* 2020;33(4). <https://doi.org/10.1128/CMR.00072-20.16>.
- [29] Nieto-Aristizábal I, Vivas AJ, Ruiz-Montaña P, Aragon CC, Posso-Osorio I, Quinones J, et al. Therapeutic plasma exchange as a treatment for autoimmune neurological disease. *Autoimmune Dis* 2020:3484659. <https://doi.org/10.1155/2020/3484659>.
- [30] Khamis F, Al-Zakwani I, Al Hashmi S, Al Dowaiqi S, Al Bahrani M, Pandak N, et al. Therapeutic plasma exchange in adults with severe COVID-19 infection. *Int J Infect Dis* 2020;99:214–8. <https://doi.org/10.1016/j.ijid.2020.06.064>.
- [31] Jaiswal V, Nasa P, Raouf M, Gupta M, Dewedar H, Mohammad H, Al Rais Z, Baqer MA, Alsabbah A, Ibrahim Y, Salem M. Therapeutic plasma exchange followed by convalescent plasma transfusion in critical COVID-19—an exploratory study. *Int J Infect Dis* 2020;102(January):332–4. <https://doi.org/10.1016/j.ijid.2020.10.085>. 2021.
- [32] Seghatchian J, Lanza F. Convalescent plasma, an apheresis research project targeting and motivating the fully recovered COVID 19 patients: a rousing message of clinical benefit to both donors and recipients alike. *Transfus Apher Sci* 2020;59 (June 3). <https://doi.org/10.1016/j.transci.2020.102794>.
- [33] Lanza F, Seghatchian J. Reflection on passive immunotherapy in those who need most: some novel strategic arguments for obtaining safer therapeutic plasma or autologous antibodies from recovered COVID-19 infected patients. *Br J Haematol* 2020;190(July 1):e27–29. <https://doi.org/10.1111/bjh.16814>.
- [34] Duan K, Liu B, Li C, Zhang H, Yu T, Qu J, et al. Effectiveness of convalescent plasma therapy in severe COVID-19 patients. *PNAS* 2020;117:9490–6. <https://doi.org/10.1073/pnas.2004168117>.
- [35] Kesici S, Yavuz S, Bayraktar B. Get rid of the bad first: therapeutic plasma exchange with convalescent plasma for severe COVID-19. *PNAS* 2020. <https://doi.org/10.1073/pnas.2006691117>.
- [36] Fortenberry JD, Nguyen T, Grunwell JR, Aneja RK, Wheeler D, Hall M, et al. Therapeutic plasma exchange in children with thrombocytopenia-associated multiple organ failure: the thrombocytopenia-associated multiple organ failure network prospective experience. *Crit Care Med* 2019;47:e173–81. <https://doi.org/10.1097/CCM.0000000000003559>.
- [37] Jaiswal V, Nasa P, Raouf M, Gupta M, Dewedar H, Mohammad H, Al Rais Z, Baqer MA, Alsabbah A, Ibrahim Y, Salem M. Therapeutic plasma exchange followed by convalescent plasma transfusion in critical COVID-19—An exploratory study. *Int J Infect Dis* 2020;102:332–4. <https://doi.org/10.1016/j.ijid.2020.10.085>. *Int J Infect Dis*. 2021 Jan;102:332-334.
- [38] Liu N, Zhang T, Ma L, Zhang H, Wang H, Wei W, et al. The impact of ABO blood group on COVID-19 infection risk and mortality: a systematic review and meta-analysis. *Blood Rev* 2020;8(December):100785. <https://doi.org/10.1016/j.blre.2020.100785>.
- [39] Göker H, Karakulak EA, Demiroğlu H, Ceylan ÇM, Büyükaşık Y, Inkaya AÇ, et al. The effects of blood group types on the risk of COVID-19 infection and its clinical outcome. *Turk J Med Sci* 2020;50(June 4):679–83. <https://doi.org/10.3906/sag-2005-395>.
- [40] Muñoz-Diaz E, Llopis J, Parra R, Roig I, Ferrer G, Grifols J, et al. Relationship between the ABO blood group and COVID-19 susceptibility, severity and mortality in two cohorts of patients. *Blood Transfus* 2021;19(January 1):54–63. <https://doi.org/10.2450/2020.0256-20>.
- [41] Mohammadali F, Pourfathollah A. Association of ABO and Rh blood groups to blood-borne infections among blood donors in Tehran-Iran. *Iran J Public Health* 2014;43(July 7):981–9. PMID: 25909065.
- [42] Chen N, Zhou M, Dong X, Qu J, Gong F, Han Y, et al. Epidemiological and clinical characteristics of 99 cases of 2019 novel coronavirus pneumonia in Wuhan, China: a descriptive study. *Lancet* 2020;395:507–13. [https://doi.org/10.1016/S0140-6736\(20\)30211-7](https://doi.org/10.1016/S0140-6736(20)30211-7).
- [43] Xu X, Han M, Li T, Sun W, Wang D, Fu B, et al. Effective treatment of severe COVID-19 patients with tocilizumab. *PNAS* 2020;117:10970–5. <https://doi.org/10.1073/pnas.2005615117>.
- [44] Eskinsson A, Mirrasekhan E, Dufour S, Schwaninger M, Engblom D, Blomqvist A. Immune-induced fever is mediated by IL-6 receptors on brain endothelial cells

coupled to STAT3-dependent induction of brain endothelial prostaglandin

synthesis. J Neurosci 2014;34(November 48):15957–61. <https://doi.org/10.1523/JNEUROSCI.3520-14>.