



SFRP4 drives invasion in gastric cancer and is an early predictor of recurrence

Rita A. Busuttill^{1,2,3} · Joshy George⁴ · Colin M. House¹ · Stephen Lade⁵ · Catherine Mitchell⁵ · Natasha S. Di Costanzo¹ · Sharon Pattison⁶ · Yu-Kuan Huang^{1,2,3} · Patrick Tan^{7,8} · Jae-Ho Cheong^{9,10} · Sun Young Rha¹¹ · Alex Boussioutas^{1,2,3}

Received: 5 October 2020 / Accepted: 14 November 2020 / Published online: 4 December 2020
© The Author(s) 2020

Abstract

Objective Gastric cancer patients generally have a poor outcome, particularly those with advanced-stage disease which is defined by the increased invasion of cancer locally and is associated with higher metastatic potential. This study aimed to identify genes that were functional in the most fundamental hallmark of cancer, namely invasion. We then wanted to assess their value as biomarkers of gastric cancer progression and recurrence.

Design Data from a cohort of patients profiled on cDNA expression arrays was interrogated using K-means analysis. This genomic approach classified the data based on patterns of gene expression allowing the identification of the genes most correlated with the invasion of GC. We evaluated the functional role of a key protein from this analysis in invasion and as a biomarker of recurrence after curative resection.

Results Expression of secreted frizzled-related protein 4 (SFRP4) was identified as directly proportional to gastric cancer invasion. This finding was validated in multiple, independent datasets and its functional role in invasion was also confirmed using invasion assays. A change in serum levels of SFRP4 after curative resection, when coupled with AJCC stage, can accurately predict the risk of disease recurrence after curative therapy in an assay we termed *PredictR*.

Conclusions This simple ELISA-based assay can help predict recurrence of disease after curative gastric cancer surgery irrespective of adjuvant therapy. The results require further evaluation in a prospective trial but would help in the rational prescription of cancer therapies and surveillance to prevent under or over treatment of patients after curative resection.

Keyword SFRP4 · Gastric cancer · Invasion · Biomarker · Recurrence

Supplementary Information The online version contains supplementary material available at <https://doi.org/10.1007/s10120-020-01143-8>.

✉ Alex Boussioutas
alex.boussioutas@petermac.org

¹ Upper Gastrointestinal Translational Research Laboratory, Peter MacCallum Cancer Centre, 305 Grattan St, Parkville, VIC, Australia

² Sir Peter MacCallum Department of Oncology, The University of Melbourne, Parkville, VIC, Australia

³ Department of Medicine, The University of Melbourne, Parkville, VIC, Australia

⁴ Computational Sciences, Jackson Laboratory for Genomic Medicine, Farmington, USA

⁵ Department of Pathology, Peter MacCallum Cancer Centre, East Melbourne, VIC, Australia

Introduction

Gastric cancer (GC) is the fifth most common cancer worldwide and the third-highest cause of cancer-related deaths [1]. In countries lacking established screening

⁶ Department of Medicine, University of Otago, Dunedin, New Zealand

⁷ Genome Institute of Singapore, Singapore, Singapore

⁸ Cancer Science Institute of Singapore, Yong Loo Lin School of Medicine, National University of Singapore, Singapore, Singapore

⁹ Department of Surgery, Yonsei University College of Medicine, Seoul, Republic of Korea

¹⁰ Department of Biomedical Systems Informatics, Yonsei University College of Medicine, Seoul, Republic of Korea

¹¹ Division of Medical Oncology, Yonsei Cancer Center, Yonsei University College of Medicine, Seoul, Republic of Korea

programs GC is often diagnosed at an advanced stage contributing to the high mortality rate. In most Western countries the overall 5 year survival rate is less than 30% [2].

Although there are a variety of prognostic measures [3, 4], the best predictor of recurrence for GC is the pathological TNM stage using the AJCC/UICC staging system. Invasion, measured by T-stage, is a fundamental property of cancer [5, 6] and the identification of key genes involved causally in invasion represent ideal candidates for therapeutics and diagnostic markers for GC.

We previously utilized mRNA expression analysis of tumour and adjacent normal samples of gastric origin to identify molecular signatures characteristic of premalignant lesions and of histological subtypes of GC [7]. The same data set has been interrogated in this study and has identified secreted frizzled-related protein 4 (*SFRP4*) as a gene highly correlated with tumour invasion or T-stage. *SFRP4*'s role in invasion was validated using independent gene expression data sets, immunohistochemistry and in vitro model systems. We then exploited the secreted nature of the SFRP4 protein to develop an ELISA-based assay (*SFRP4 ratio*) which, when used in conjunction with existing clinical variables, is able to predict disease recurrence in GC patients after curative resection with a high degree of accuracy.

Materials and methods

Patients and samples

Tumour samples were collected from patients undergoing curative resection for GC in Melbourne. Blood samples were collected at the time of surgery and at indicated intervals post-operatively.

Microarray analysis

cDNA microarrays (GSE2669) on tumour specimens were run previously [7]. Clinical characteristics of patient samples are described in Table S1. All continuous variables were considered as parametric data and analysed with ANOVA using the Benjamini–Hochberg false discovery rate for multiple correction [8]. K-means clustering analysis did not include correction for multiple testing and was conducted in Genespring version 4.2 (Agilent Technologies Inc., California).

Microarray Validation cohorts

Validation cohorts were selected based on their genomic platforms and the availability of clinical information.

Australian Gastric ($n=99$; GSE51105) [9] (see Table S1) and Singapore Gastric ($n=178$; GSE15459)[10] cohorts were profiled using Affymetrix U133 plus2 arrays. The TCGA STAD gastric cohort was profiled using RNA-seq [11].

Immunohistochemistry

Immunostaining was performed on tissue microarray (TMA) sections using anti-SFRP4 antibodies (1:250; provided by Lisa Horvath [12]) and the DAKO LSAB + kit (DAKO), following the manufacturer's protocol.

Overall survival and relapse-free survival analysis

Australian and Singapore datasets were analysed for Relapse-free (RFS) and overall survival (OS) using the Barcode [13] algorithm. Validation using the public database Kaplan–Meier plotter (KMplot) [14] was performed using default settings. OS of the TCGA dataset was interrogated using the Survexpress portal [15].

Genes and pathways correlated with SFRP4

Genes correlated with *SFRP4* were identified in the Australian and TCGA cohorts using R and the cBIOPORTAL [16, 17] interfaces respectively. Genes with Pearson correlation ≥ 0.6 were identified and duplicate genes were removed. Genes common to both datasets were analysed using Reactome to identify functional pathways [18].

Cell culture

The human GC cell lines AGS, SNU-1 and NCI-N87 were obtained from the American Type Culture Collection (Rockville, MD, USA). Cells were cultured in DMEM (AGS) or RPMI (SNU-1 and NCI-N87) supplemented with 10% fetal bovine serum, penicillin (100 U/ml) and streptomycin (100ug/ml) (all from Invitrogen, Carlsbad, CA). Cell lines were verified mycoplasma negative and identities were verified using the PowerPlex HS16 System kit (Promega).

shRNA knockdown

Verified shRNA clones were obtained from the Open Biosystems pGIPz library (Victorian Centre for Functional Genomics). shRNA-expressing lentiviral plasmids were transfected using Lenti-X packaging vectors into HEK293T cells (Open Biosystems). Viral containing media was collected, filtered and stored at -80°C . Target cells were transduced and selected using puromycin. Knockdown was confirmed using quantitative real-time PCR and Western blot.

Western blotting

Total protein was extracted using lysis buffer (50 mM Tris pH 8.0, 2% SDS). Western blot analysis was carried out using standard procedures with the following antibodies: anti-SFRP4 polyclonal antibody [R&D (AF1827) 1:10,000] and Anti-Tubulin (Sigma, clone B-5-1-2).

Proliferation and apoptosis assays

Proliferation assays were performed by seeding 5×10^4 cells/well in 6-well plates and cell numbers were determined daily using the Countess (Invitrogen) system for a total of 3 days. Apoptosis was detected using the Apoptaq kit (Chemicon) using the manufacturer's conditions. AGS and NCI-N87 cells were seeded directly into chamber slides whilst a cyto-spin was performed on SNU-1 cells to adhere them to the slide prior to fixing in methanol.

Invasion assay

Cells were synchronized by serum starvation to prevent proliferation during the assay. 400,000 cells in serum-free media \pm recombinant SFRP4 (0–20 nM; R&D systems) were combined with matrigel and seeded into 8 μ m pore transwells. Media containing serum was added to the bottom chamber as a chemoattractant and incubated for 24 h at 37 °C/5% CO₂. Migrated cells were fixed in formalin and stained with DAPI. Membranes were mounted on slides and quantitated by microscopy. Five microscopic fields were counted per membrane. Each experiment was performed in triplicate at least three times.

Wound healing (migration) assay

AGS cells were seeded in a dark-walled 96-well plate and cultured till confluent then serum starved for 24 h. The cell monolayer was wounded with a 1.5 \times 4 mm scratch using a robotically driven pin and growth media replaced. After 24 h cells were fixed using 2% PFA and stained with phalloidin (Molecular Probes) and DAPI. The extent of wound healing determined using published methods [19].

SFRP4 ELISA

SFRP4 ELISA was performed using a commercially available kit (USCNK Life Science Inc) following the manufacturer's instructions. Samples represent unique cohorts of pre- and post-operative specimens and with at least 3 years follow up. A consort diagram (FigS1) details the criteria

for sample selection. An independent validation dataset was obtained from South Korea. Clinical characteristics for all cohorts are detailed in Table 1.

Statistical analysis

Data are expressed as mean \pm SEM unless otherwise indicated. Analysis was performed using Graphpad prism software. K-means clustering was performed using cDNA expression arrays using Genespring software (Agilent, USA). All analysis of Affymetrix U133 plus 2 data was carried out using R-package. We used SFRP4 ratio and TNM stage information as independent variables in a binary logistic regression analysis which resulted in a predicted probability of the combination of both variables predicting recurrence. This was evaluated by AROC and all analyses were performed in SPSS ver22 for Mac (IBM, Chicago).

Results

SFRP4 expression correlates with invasion

Invasion is a necessary requirement of cancer. To identify key genes contributing to invasion, cDNA expression array data previously generated in our laboratory using an Australian based cohort of 65 tumours was interrogated (GSE2669; See Table S1). T-stage was used as a measure of invasion of GC. Expression patterns positively correlated with T-stage were identified using the GeneSpring (Agilent Technologies Inc., California) K-means clustering algorithm. Eight patterns (K) of gene expression were chosen where every element on the 10.5 K array (incorporating 7383 genes) was used.

SFRP4 has been previously identified by our group as significantly overexpressed in GC compared to normal tissue [7] and in this study was identified as one of the most significantly correlated genes with T-stage in this discovery cohort (Fig. 1a) and given its secreted nature was selected for further investigation.

A second Australian based cohort was utilised for further validation. This cohort consisted of 99 GC cases (including 43 samples which were also profiled in the cDNA array discovery cohort) and 40 normal/premalignant samples profiled using Affymetrix 133 plus2 arrays (GSE51105; Table S1).

The expression of *SFRP4* during progression to GC was explored (Fig. 1b). Compared to normal gastric mucosa ($n=7$) the premalignant conditions chronic gastritis ($n=22$, $p=0.0077$) and intestinal metaplasia ($n=21$, $p=0.0031$) both demonstrated elevated *SFRP4* expression. *SFRP4* expression

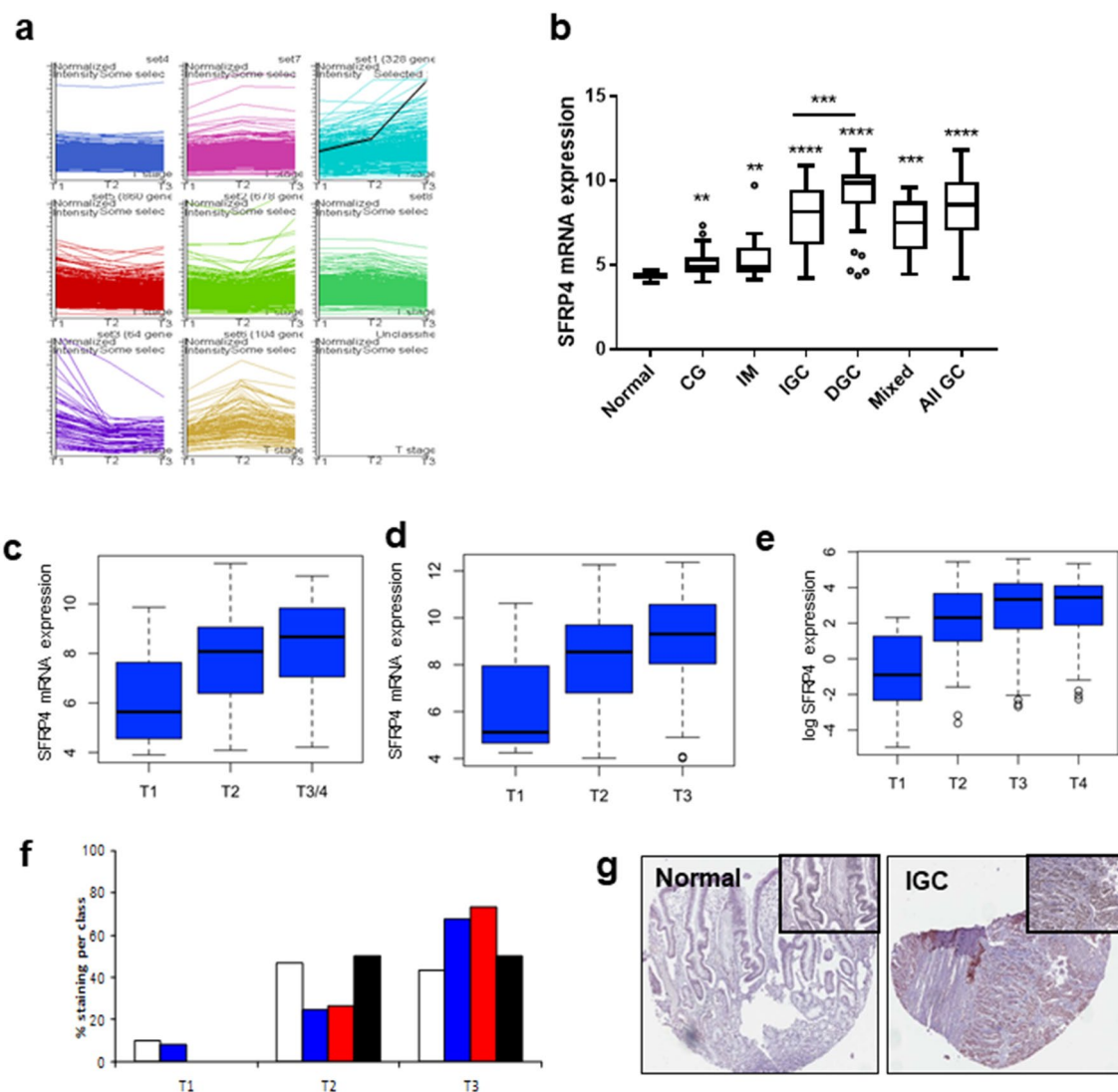


Fig. 1 Identification of SFRP4 as the gene most correlated with invasion. cDNA array expression data was generated for 65 tumours of known T-stage. **a** K means clustering was performed based on depth of invasion (T stage). Overall patterns of gene expression (y-axis) using depth of invasion as a continuous variable (x-axis) visualising all 7383 genes were generated. SFRP4 (black line) was identified as the gene most correlated with invasion in this dataset. Findings were then validated over independent platforms and datasets. **b** SFRP4 expression in gastric tissues. 146 gastric tissues were profiled using Affymetrix U133 plus 2 arrays and stratified according to tissue type. Histologically normal gastric tissues [NN ($n=7$)] exhibited significantly lower SFRP4 expression than other benign tissues [chronic gastritis (CG ($n=22$); $p=0.0077$)] and intestinal metaplasia [IM ($n=23$; $p=0.0031$)]. Highest levels of SFRP4 expression were observed in gastric tumour samples ($n=99$; $p<0.0001$). Further

analysis of the 2 histological subtypes showed SFRP4 expression to be highest in diffuse GC ($n=39$) compared to intestinal gastric cancer ($n=50$; $p=0.0004$). Mann–Whitney test was used for analysis. SFRP4 expression based on T-stage was determined in **(c)** an updated Australian data set of 99 tumours ($p=0.003$; Kruskal–Wallis test) and the **(d)** Singapore dataset ($n=178$; $p=0.009$ Kruskal–Wallis test) were run on Affymetrix Human U133 plus 2 arrays. Each panel represents an individual probe for SFRP4 on the array. **e** The data was also validated using the TCGA RNASeq data set ($n=255$; $p=2\times 10^{-5}$ Kruskal–Wallis test) **(f)** SFRP4 protein expression was determined by IHC on a TMA. Staining was quantitated using a semi-quantitative scale from 0 (no staining; white bar), 1+ (blue bar), 2+ (red bar) and 3+ (black bar) **(g)** representative images showing staining of normal gastric mucosa and an intestinal type GC (IGC). Images $\times 10$ and magnified $\times 40$

was highest in the all GC group which comprised all GC cases ($n=99$; $p<0.0001$ compared to normal). Further analysis of the GC cases showed the diffuse subtype ($n=39$) had significantly higher SFRP4 expression than the intestinal subtype ($n=50$; $p=0.0004$).

Increasing SFRP4 expression with T-stage was validated in three independent GC cohorts. Analysis of the tumour samples in the Australian cohort (described above) showed that *SFRP4* expression levels increased incrementally with advanced T-stage (Fig. 1c; $p=0.003$; Kruskal–Wallis test).

Table 1 Clinical characteristics of ELISA cases

Parameter	Pilot set		Test set		Korean set	
	Recurrence	Non-recurrence	Recurrence	Non-recurrence	Recurrence	Non-recurrence
Age at surgery [years (range)]	60.7 (33–83)	67.1 (55–78)	63.6 (33–83)	64.13 (43–78)	53 (33–75)	60 (43–81)
Gender						
Male	8	10	28	21	3	17
Female	3	3	8	10	3	5
Type II diabetes						
Y	0	1	4	4	1	3
N	11	12	32	27	5	19
Tumour location						
Cardia	4	1	8	5	0	0
Non cardia	7	12	28	26	6	22
<i>H. pylori</i> status						
Positive	6	6	19	17	2	3
Negative	4	4	9	10	2	9
Unknown	1	3	8	4	2	10
Chemo-radiotherapy						
Neo-Adjuvant						
No Adjuvant	9	13	33	30	6	22
Adjuvant	2	0	3	1	0	0
Adjuvant						
No Adjuvant	4	7	12	20	UNK	UNK
Adjuvant	7	6	24	11	UNK	UNK
Palliative						
No Palliative	3	N/A	19	N/A	UNK	N/A
Palliative	8	N/A	13	N/A	UNK	N/A
ND	0	N/A	4	N/A	UNK	N/A
Pathology						
Diffuse	4	3	14	8	2	15
Intestinal	6	8	12	20	3	7
Mixed	1	0	7	1	1	0
Adenocarcinoma	0	1	2	1	0	0
Adenosquamous	0	1	1	1	0	0
Differentiation						
Well	0	1	0	1	0	0
Moderate	4	4	10	10	2	5
Poor	6	6	20	18	3	13
Undifferentiated	1	2	6	2	1	4
T stage						
T1	0	2	0	7	0	0
T2	3	4	5	11	0	1
T3	8	7	29	13	1	8
T4	0	0	2	0	5	13
AJCC 6th stage						
IA	0	2	0	7	0	0
IB	1	2	1	7	0	0
II	3	5	10	9	0	0
IIIA	5	2	16	4	0	4
IIIB	1	2	3	4	1	5
IV	1	0	6	0	5	13

Table 1 (continued)

Parameter	Pilot set		Test set		Korean set	
	Recurrence	Non-recurrence	Recurrence	Non-recurrence	Recurrence	Non-recurrence
Surgery type						
Proximal gastrectomy	3	1	6	1	0	0
Distal gastrectomy	4	6	11	14	0	15
Total gastrectomy	1	5	15	15	6	7
Oesophagogastrectomy	3	1	4	1	0	0
Margins						
R0	11	12	32	30	4	22
R1	0	1	4	1	2	0
Recurrence type						
Local	1	0	3	0	0	0
Distant	5	0	22	0	5	0
Both	5	0	11	0	1	0
None	0	13	0	31	0	22
Time till recurrence	25.6 (5.9-43.5)	N/A	21.1 (2.8-77.4)	N/A	93 (30.6-233.23)	N/A

N/A not applicable

UNK unknown

Due to the limited number of T4 samples available, these were grouped with the T3 samples. Expression data were obtained from 178 independent GC samples originating from Singapore. T-stage information was available for 152 of these cases. *SFRP4* mRNA expression data for these cases is represented in Fig. 1d ($p=0.009$; Kruskal–Wallis test). The STAD-TCGA dataset contains RNA-Seq data for 255 GC cases with known T-stage that also significantly validated the observation (Fig. 1e; $p=2 \times 10^{-5}$; Kruskal–Wallis test. All three datasets consistently demonstrate increasing *SFRP4* expression with more advanced T-stage.

Expression of SFRP4 protein mirrored the mRNA result. Immunohistochemistry of SFRP4 was performed and staining was assessed semi-quantitatively on a scale 0–3+. Increased SFRP4 protein expression was observed in T3 compared with T1/T2 tumours (Fig. 1f). SFRP4 was overexpressed in the majority of gastric cancers and absent in normal gastric tissue (Fig. 1g).

Elevated SFRP4 mRNA expression predicts poor prognosis

Affymetrix array-derived data were used to determine whether tumour *SFRP4* mRNA expression levels could reliably predict prognosis. The Barcode method [13] of analysis which uses a binary representation of expression

data was used to classify samples as having high or low *SFRP4* mRNA expression. Relapse-free survival (RFS) indicated that high *SFRP4* mRNA expression levels were correlated with poor prognosis and patients with low *SFRP4* expression levels had a significantly lower risk of recurrence in both the Australian ($p=0.01$; Fig. 2a) and Singapore ($p=0.04$; Fig. 2b) datasets. These findings were also validated using the gastric cohorts in the KMplot database ($p=0.003$; Fig. 2c) [14]. Survival data were limited for the TCGA dataset with no RFS data available.

A similar analysis with overall survival as an endpoint indicates that high SFRP4 expression correlates with poor survival, irrespective of T-stage in all four cohorts studied (Australian $p=0.12$ Fig. 2d; Singapore $p=0.002$ Fig. 2e; KMplot gastric datasets $p=2.4 \times 10^{-5}$ Fig. 2f and TCGA STAD datasets $p=0.0336$ Fig. 2g).

SFRP4 has a functional role in invasion

In view of the association with T stage, we wanted to examine the role of SFRP4 in the mechanism of invasion. shRNA was used to knockdown *SFRP4* expression in GC cell lines AGS, SNU-1 and NCI-N87. Western blot was used to confirm knockdown of SFRP4 expression at the protein level (Fig. S2A–C) and quantitation of knockdown is shown in Fig. S2D–F). The best overall knockdown was observed

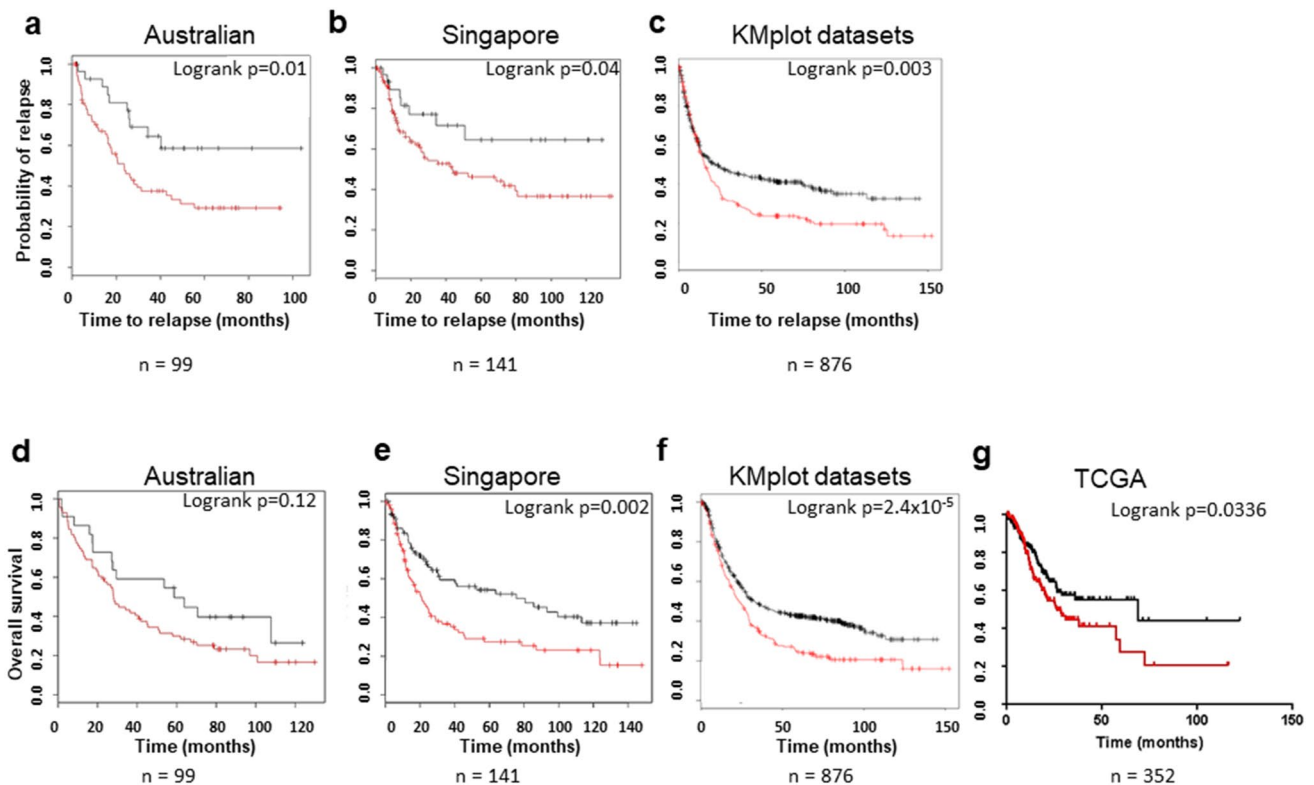


Fig. 2 Effects of SFRP4 expression on relapse free (RFS) and overall survival (OS). Samples with available survival data were classified as SFRP4 high (red) or low (black) based on mRNA expression using the Barcode method [Australian ($n=99$) and Singapore cohorts ($n=141$)] or default settings of the kmplot interface (combined independent datasets ($n=876$) or Survexpress for the TCGA STAD cohort ($n=352$)). **a-c** Kaplan-Meier curves were generated showing RFS. The results indicate that high SFRP4 expression levels were

correlated with poor prognosis whilst patients harbouring tumours with low SFRP4 expression levels had a significantly lower risk of recurrence [$p=0.01$ (Australian data set); $p=0.04$ (Singapore data set); $p=0.003$ (combined independent data set) log-rank test]. A similar analysis was performed using OS as an endpoint (**d**) Australia dataset $p=0.12$ (**e**) Singapore dataset $p=0.002$ (**f**) combined independent data set $p=2.4 \times 10^{-5}$ (**g**) TCGA STAD dataset ($p=0.0336$)

using construct #3 (Fig. 3a-f) which was then used for subsequent experiments.

Potential confounding effects of *SFRP4* knockdown on proliferation (Figs. S2G–) and apoptosis (Figs. S2I–L; Fig. S3A) were excluded.

A critical requirement for tumour invasion is the ability of the cancer cells to penetrate the extracellular matrix and ultimately invade into adjacent structures. We utilised invasion assays to quantitate the ability of GC cells to invade through matrigel in vitro. AGS cells with reduced *SFRP4* expression (AGS-SFRP4#3) exhibited a significant (72%) reduction in invasion compared to the non-targeting control (Fig. 3g; AGS-scramble; $p=0.0005$; t test). Pre-incubation of knockdown cells with recombinant human-SFRP4 restored the invasion capacity of the cells to invade back to basal levels in a dose-dependent manner (Fig. S3B). The addition of 20 nM recombinant SFRP4 protein to wild-type cells also significantly enhanced their ability to invade over baseline Fig. 3g ($p=0.02$; t test). This suggests the secreted form of SFRP4 can help drive invasion.

Similar results were obtained with SNU-1 ($p=0.05$) and NCI-N87 ($p=0.04$; t test) cells, which also exhibited significant reduction (77% and 68% respectively) of invasive ability after SFRP4 knockdown (Figs. 3h, i, respectively). Representative images of invasion for all cell lines tested are shown in Fig. S3C.

Migration assays showed that reduced SFRP4 levels inhibited the migration of AGS cells ($p=0.007$; Fig. S3D). This assay was only performed for the AGS cell line as the other cell lines do not grow in a uniform monolayer, which is required for this assay.

Taken together, the validation and functional data described above suggest a functional role for secreted SFRP4 in the invasion of GC. To further explore this gene expression data from the Australian and TCGA cohorts was interrogated to identify genes most correlated with *SFRP4* (447 and 64 genes, respectively; Table S2 and Fig. S4A). Genes common to both datasets ($n=53$; Table S2 and Fig. S4A) were further analysed using the Reactome Database [18]. Five of the top 8 enriched pathways are related to

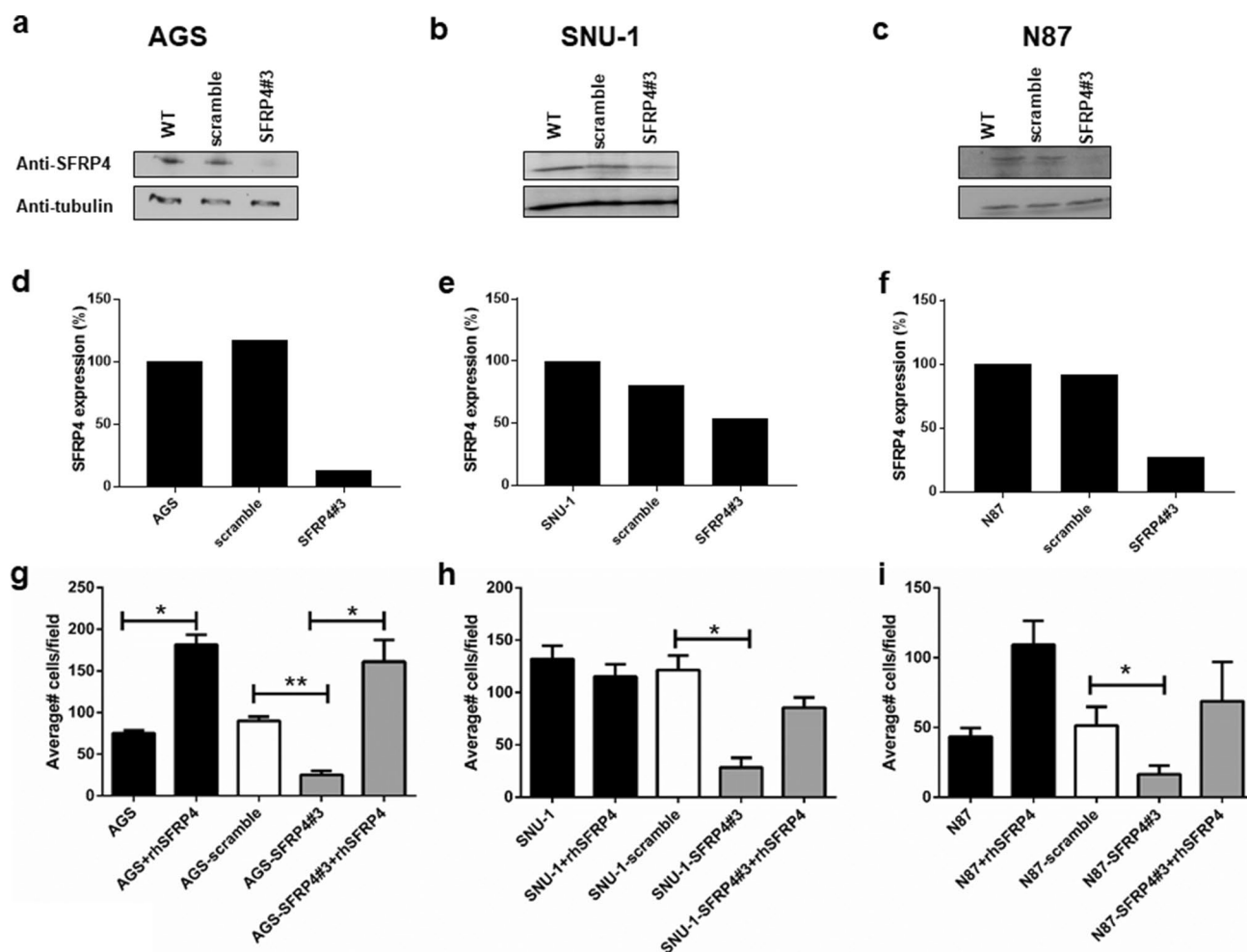


Fig. 3 shRNA knockdown of gastric cancer cell lines. shRNA based lentiviral constructs were used to knockdown SFRP4 expression in (a) AGS, b SNU-1 and (c) NCI-N87 gastric cell lines using the SFRP4#3 construct and validated by Western blot. d-f Quantitation of knockdown was determined using Image J (g-i) Invasion assays were performed using WT cells, WT cells+scramble and WT cells+SFRP4 lentivirus. Reduction of SFRP4 expression resulted in

a significant reduction in invasive capabilities (compared to scramble controls) in all cell lines. Pre-incubation of the cells with 20 nM recombinant human SFRP4 was able to restore the invasive ability of the knockdown cells to wild-type levels and, in the case of AGS and NCI-N87 cell lines was able to enhance the invasive capability of WT cells. Data show means \pm SD. of at least three independent experiments. * $p < 0.05$, ** $p < 0.01$

extracellular matrix organisation, composition and degradation. (Fig. S4B).

Given that disruption of the extracellular matrix promotes epithelial to mesenchymal transition (EMT) and ultimately invasion the Australian cohort was used to correlate *SFRP4* expression to that of key genes involved in EMT. *SFRP4* was found to be significantly positively correlated to *SNAIL*, *SLUG*, *VIM*, *ZEB1*, *ZEB2* and *TWIST1* and negatively correlated to *CDH1* (Fig. S5). These findings suggest that EMT may be a large component of the mechanism of action of SFRP4.

Utility of SFRP4 as a biomarker of recurrence

Based on the finding that the secreted form of SFRP4 has biological relevance for GC we investigated the possibility

that serum or plasma SFRP4 levels could be used as a diagnostic test for patients with GC or as a prognostic biomarker. SFRP4 ELISA showed a high patient-to-patient variation of both non-cancer volunteers and GC patients with no overall difference between the two groups (data not shown) suggesting that baseline or preoperative blood SFRP4 levels are not a suitable for diagnosis of GC.

The role of SFRP4 in invasion and potentially metastasis suggested a change in plasma levels within an individual may be useful in predicting patient recurrence after curative resection. We sought to determine whether SFRP4 levels changed after curative resection when compared to an individuals baseline level to test the change in SFRP4 level as a biomarker of tumour recurrence. We utilised a unique cohort of patients who had undergone curative resection and

were followed for up to 10 years (mean 7.3 years in non-recurrence cases) with serial blood samples.

The pilot phase analysed 11 patients with recurrent disease from our Australian cohort and measured SFRP4 levels in plasma: pre-operatively (baseline-levels); post-operatively (first blood drawn post-surgery); pre-recurrence (blood drawn before clinical diagnosis of recurrence) and; post-recurrence (first blood drawn after clinical diagnosis of recurrence). The control group comprised 13 patients, matched for stage, treatment, age and gender and who had undergone curative gastric resection with no documented recurrence. For the control group, plasma collected: pre-operatively (baseline-levels); post-operatively (first blood drawn post-surgery) and; a time point at least 36 months post operatively was analysed. This time point was selected as most GC patients who recur do so within 36 months of surgery. Patient selection criteria (Fig. S1) and clinical characteristics (Table 1) were matched in both groups.

Plasma SFRP4-levels were determined for all samples using ELISA and were measured as a ratio against the individual patient's baseline level, to control for individual variation. (Fig. 4a). SFRP4 ratio was defined as the ratio of

the first post-operative blood SFRP4 level and the baseline SFRP4 level for individual patients. The data indicate that SFRP4 ratios remained constant for patients who did not develop a recurrence of disease, whilst there was an early and sustained increase over baseline of SFRP4 plasma ratios in patients who ultimately recurred (Fig. 4a). There was a clear increase in circulating SFRP4 levels in patients who develop cancer recurrence that occurs very early after curative resection and was maintained, in some cases for years, before the clinical diagnosis of recurrence (Fig. S6). We propose this novel finding could be exploited as a clinical biomarker of recurrence that would facilitate triage to more aggressive therapy or surveillance in the high-risk group.

Comparison of SFRP4 ratio and existing blood-based biomarkers

There are no established prognostic or surveillance biomarkers recommended for GC. We compared *SFRP4 ratio* with existing clinical biomarkers for gastrointestinal cancer and upper gastrointestinal cancer, CEA and CA19-9 respectively, to evaluate their ability to pre-empt

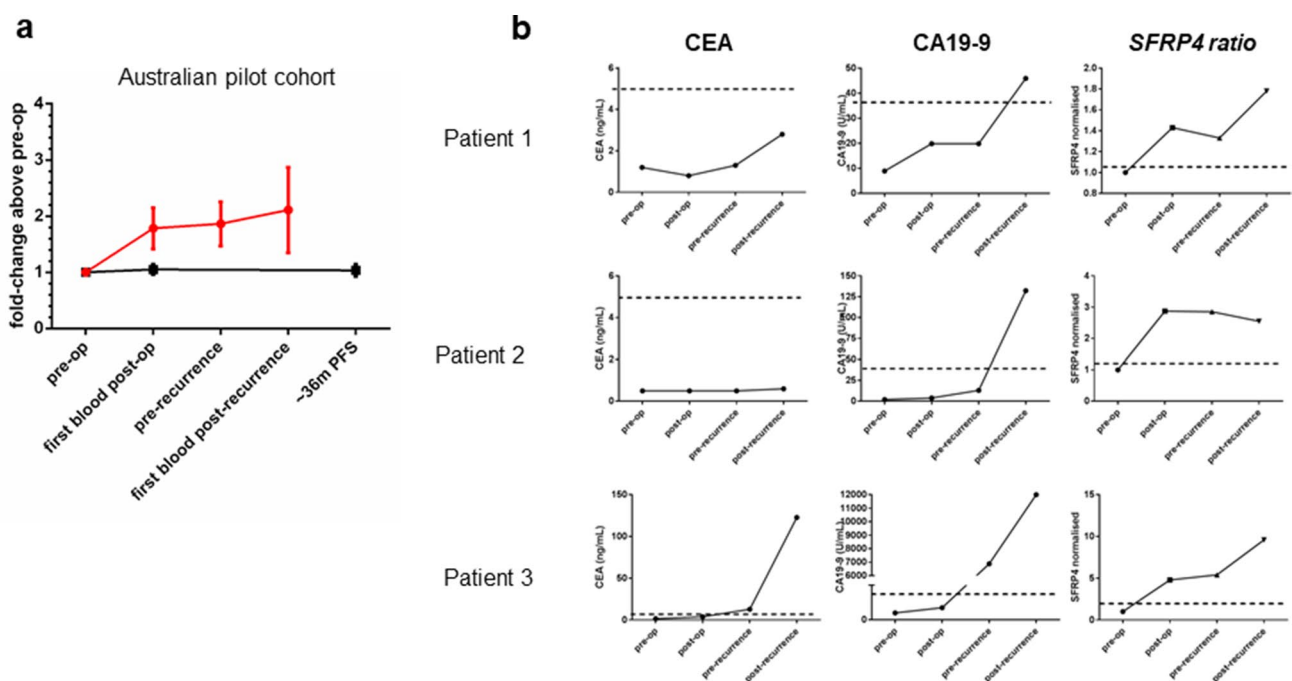


Fig. 4 Secreted SFRP4 as a biomarker for gastric cancer. **a** Plasma samples collected over a period of 36 months from a pilot cohort of clinically matched Australian GC patients, 11 of whom ultimately recurred (red line) and 13 who did not recur (black line) were sampled using a commercial ELISA based assay. For each patient, all results were normalised to that of their pre-operative blood sample (*SFRP4 ratio*). **b** The ability of *SFRP4 ratio* to predict recurrence was tested in a series of patient samples collected from patients who have previously developed recurrent disease. For each patient CEA, CA19-9 and *SFRP4 ratio* levels were determined and compared using

plasma collected pre-operatively, the first post-operative blood, pre documented recurrence (pre-recurrence) and following clinically confirmed recurrence (post-recurrence). Dotted lines represent the clinically utilised cut-offs for each test (CEA; 5 ng/mL and CA19-9; 35U/mL). For *SFRP4 ratio* the pre-determined cut off ratio of 1.2 was used. CEA yielded various results and was only able to predict recurrence in a small percentage of cases. CA19-9 only showed positive results after recurrence was detected clinically. These data negate the use of both these tests as a biomarker of GC. *SFRP4 ratios* shows the promising ability to predict recurrence soon after curative resection

and detect recurrence. Pre-operative, post-operative, pre-recurrence and post-recurrence bloods from GC patients were analysed using the standard CEA and CA19-9 testing methods performed by the Peter MacCallum Cancer Centre Pathology service. Figure 4a shows representative data for 3 patients. CEA and CA19-9 show limited ability to detect existing recurrent disease prior to the clinical diagnosis of the recurrence, which provides no clinical advantage. *SFRP4 ratio* is the only marker elevated before recurrence, often months or years before the recurrence is clinically diagnosed.

SFRP4 ratio and AJCC combination is the most accurate predictor of recurrence (PredictR)

Given the superior ability of *SFRP4* ratio to predict recurrence in comparison to existing biomarkers we then sought to determine whether this was independent of currently accepted clinical prognosticators, namely pathological TNM stage. Logistic regression was used to assess the role of each of 5 different models: (i) T-stage alone; (ii) N-stage alone; (iii) *SFRP4 ratio* alone; (iv) pathological AJCC stage (7th edition) alone and; (v) *SFRP4 ratio* and pathological AJCC (7th edition) in combination using a validation cohort of

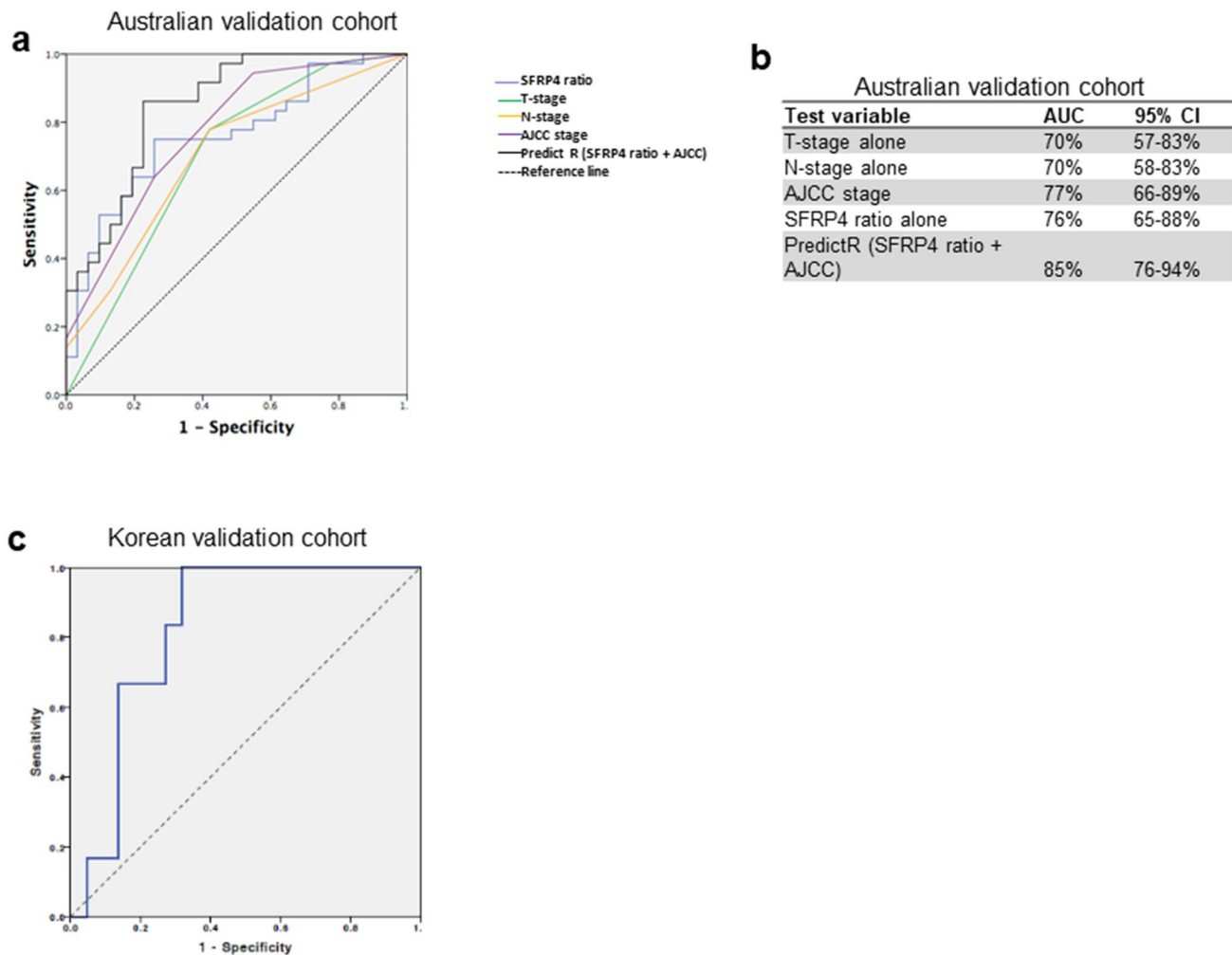


Fig. 5 Development of an a test to predict recurrence of gastric cancer post resection (PredictR) **(a)** ROC and Logistic regression were used to determine whether *SFRP4 ratio* was predictive of recurrence independent of T-stage, N-stage and AJCC stage using an extended validation cohort of 67 Australian GC patients (36 recurrence and 31 non-recurrence). *SFRP4 ratio* and AJCC stage alone were similar in predictive accuracy when used independently, however when combined (PredictR) their accuracy was significantly improved. Odds ratio of recurrence using *SFRP4 ratio* alone at a cutoff of 1.21 was

7.2 (95% CI 2.5–20.6; $p < 0.001$) **(b)** Area under ROC of the different groups showing highest accuracy in the *PredictR* (*SFRP4ratio*/AJCC) combination using a logistic regression model with 95% CI (p -value for the difference with AJCC alone = 0.044) **(c)** This was further validated in a second independent cohort of 28 Stage III Korean patients (Korean validation cohort) 6 recurrence and 22 non-recurrence) and found an accuracy (AUC) of 83% using *SFRP4 ratio*. Odds ratio of recurrence with *SFRP4 ratio* at a cutoff of 1.21 was 16 (95% CI 1.5–171.2; p value = 0.002)

67 clinically matched GC patients from Australia which included the pilot group (Clinical data in Table 1).

Models of prediction were evaluated using an ROC analysis (Figs. 5a, b). The *SFRP4 ratio*/AJCC combination was termed PredictR and had an AUC of 85% (95%CI 76–94%) for prediction of recurrent disease whereas pathological AJCC (the current preferred predictor of recurrence) was 77% (95%:CI 66–89%) and the p-value of this difference was 0.044. It is notable that *SFRP4 ratio alone* had an independent AUC of 76% (95% CI 65–88%) and odds ratio 7.12 (95% CI 2.5–20.6; $p < 0.001$) that the combination with pathological TNM (AJCC) was additive in the prediction accuracy.

This result was further validated using a prospectively collected series from South Korea. Based on the excellent prognosis of these patients, we selected cases with similar clinical profiles to our Australian cohort and we used 27 South Korean AJCC stage III cases. The ROC curve (Fig. 5c) reveals *PredictR* has an independent AUC of 83% (95% CI: 63–98%) for prediction of recurrence in these patients. We performed logistic regression to determine if *SFRP4 ratio* alone at a threshold value of 1.2 was predictive of recurrence in this cohort and found an Odds Ratio of 16 (95% CI 1.5–171.2; $p = 0.022$) independent of stage corresponding to a positive predictive probability of recurrence using *SFRP4 ratio* alone of 84%.

Discussion

We have previously identified *SFRP4* as consistently over-expressed in all GC subtypes when compared to corresponding normal tissue [7]. Other studies have reported similar findings in a variety of solid cancers [12, 20–22]. Epigenetic downregulation of secreted frizzled-related proteins and *SFRP4* by promoter methylation has been described in some cancer types [23, 24] however in GC this seems to be restricted to the *SFRP2* gene [25]. Here we show that elevated tumour *SFRP4* expression is associated with poor prognosis in GC which was also recently reported by others [26]. These authors used an in silico based approach to show that overexpression of *SFRP4* is correlated with poor survival in glioma, colorectal, clear cell kidney, liver, head/neck SCC and bladder cancers but not breast, lung, pancreatic, ovarian or oesophageal cancer, suggesting disparate roles for this protein in different tumour contexts [26].

Here, we used multiple clinical genomic cohorts of GC to validate the finding that *SFRP4* is over-expressed in more invasive cancers. Invasion is an important hallmark of malignancy [5, 6]. Our analysis was found to significantly predict the risk of recurrence of patients after curative resection of their GC. *SFRP4* tumour expression was previously reported as part of a 6-gene signature which was able to predict recurrence of GC [27]. Further, the prognostic value of *SFRP4*

overexpression in resectable GC was recently validated in archived samples from the CLASSIC trial cohort [28]. We showed elevated *SFRP4* was significantly associated with poor overall survival in the Singapore, KMplot and TCGA cohorts. A similar trend was also seen in the Australian cohort but this was not significant most likely due to the small sample size.

Despite being well known for their role as WNT modulators and tumour suppressors there is emerging evidence that suggests the SFRPs may have alternate functions related to the promotion of carcinogenesis in a context and tumour type-dependent manner [29]. Indeed a pan-cancer, in silico study [26] suggests that despite their proposed roles as Wnt antagonists *SFRP2* and *SFRP4* may promote processes such as cellular invasion and metastasis. This is consistent with our findings which show that *SFRP4* expression is correlated with T-stage. We observed that genes correlated with *SFRP4* are functionally enriched for signalling and extracellular matrix pathways both of which are disrupted during EMT, a cellular de-differentiation process by which epithelial cells lose cell adhesion capabilities and gain invasive properties [30].

We find that reducing *SFRP4* levels using shRNA resulted in the reduced invasion of different subtypes of gastric cancers in vitro. This novel finding introduces a unique variation to the treatment of cancer since we have found inhibiting *SFRP4*, while not oncocidal, may be considered oncostatic (limiting invasion and potentially metastasis).

A second novel finding describes an assay which uses *SFRP4* plasma levels in two blood samples of humans with GC. The first is taken immediately before surgery for curative resection and the second at approximately 1 month following surgery. The ratio of these values (*SFRP4 ratio*) allows for prediction of recurrence many months or years into the future with an early and sustained increase in *SFRP4* levels observed following curative surgery in patients whose cancer ultimately recurred. The only other use of *SFRP4* as a biomarker was in the context of Type2 diabetes mellitus [31]. We considered the potential confounding of Type2 diabetes mellitus in our study participants and found an equivalent distribution of patients in our cohort (Table 1).

There are currently no effective non-invasive prognostic biomarkers for the early detection of GC or its recurrence following curative resection. Pepsinogen I/II ratio [32] has been used as a screening test in some countries but is not useful as a surveillance tool. Currently, there are no reliable circulating biomarkers for monitoring treatment of GC. Clinicians variably use CEA (carcinoembryonic antigen), CA19-9 and CA72-4 as serum markers. These assays were used mainly as diagnostic biomarkers rather than markers of prognosis. CA72-4 was reported with significant specificity (97%) for GC [33], but because of poor sensitivity (47%) is not used in population-based screening or for disease

follow-up. Our *SFRP4* ratio biomarker outperforms current serum-based tests in pre-empting recurrence many months prior to clinical detection of recurrence. Whilst significant when used alone, the predictive value of SFRP4 ratio is further improved with the addition AJCC staging data obtained at the time of surgical resection. We believe this is a major step forward in providing more precise information to patients and potentially changing their management decisions. This observation however needs to be replicated in prospective trials. A number of potential biomarkers for GC, based on genetic and epigenetic changes, have been described. However, none of these have translated into clinical use, again due to lack of sensitivity and/or specificity (reviewed in [34, 35]).

One limitation of this study reflects the current clinical care of GC patients after curative resection. Namely, the guidelines for postoperative management of GC recommend clinical follow-up but no active radiological follow-up [36] because there is currently limited evidence suggesting that early detection of recurrence impacts patient survival. As a result of current clinical practice, patients within this cohort were only investigated for recurrence after clinical suspicion. It is conceivable that recurrence in our *PredictR* positive patients may have been detected earlier if regular surveillance was the standard of care. We believe the results presented in this study warrant further clinical trial to validate the efficacy of in a prospective cohort and we believe may lead to practice change in GC management by allowing us to identify patients at risk of recurrence very early and allow targeted therapy or more intensive surveillance of that high-risk group.

In conclusion, we have shown that *SFRP4* is over-expressed in the majority of gastric cancers and its high expression leads to a poor outcome. We report for the first time that *SFRP4* functions in the cellular invasion of GC and this is the reason for the poor prognosis and that inhibition of SFRP4 leads to abrogation of invasion in vitro. This study also found that SFRP4 levels in patients after curative resection of gastric cancer predicts GC recurrence at an early stage. We hypothesise that resection of the primary tumour triggers the establishment of a permissive environment for pre-seeded micrometastases to begin to invade, prior to the clinical detection, and that this evidenced by an early and sustained increase in serum SFRP4 levels in patients who ultimately recur. Our *PredictR* assay may allow triage of patients to a high-risk group warranting more aggressive therapy and increased surveillance. This is a step towards precision medicine given *PredictR* may be used in conjunction with a companion therapeutic that could target SFRP4 inhibition. These will need to be tested in future clinical trials to determine whether this strategy leads to improved clinical outcomes.

Acknowledgements We thank the VCFG for providing the shRNA constructs and Lisa Horvath (Garvan Institute of Medical Research) for providing the SFRP4 antibody used for IHC. We also acknowledge David Faulkner (Peter MacCallum Cancer Centre Department of Pathology) for assistance with the CEA and CA19-9 testing.

Funding This research was supported by funding from the Peter Mac Foundation (RB), VCA (Early Career Seed Grant to RB), No Stomach For Cancer Foundation (AB/RB), NHMRC grants ID454584 (AB), ID1030980 (AB), The Li Ka Shing Foundation (AB) and philanthropic funding from the Estate of George Wilson and an anonymous donor.

Compliance with ethical standards

Conflict of interest The authors have declared no potential conflicts of interest.

Ethics approval and consent to participate All participants provided written informed consent. All procedures were accepted by the Institutional Review Board of the Peter MacCallum Cancer Centre and each of the collection centres.

Open Access This article is licensed under a Creative Commons Attribution 4.0 International License, which permits use, sharing, adaptation, distribution and reproduction in any medium or format, as long as you give appropriate credit to the original author(s) and the source, provide a link to the Creative Commons licence, and indicate if changes were made. The images or other third party material in this article are included in the article's Creative Commons licence, unless indicated otherwise in a credit line to the material. If material is not included in the article's Creative Commons licence and your intended use is not permitted by statutory regulation or exceeds the permitted use, you will need to obtain permission directly from the copyright holder. To view a copy of this licence, visit <http://creativecommons.org/licenses/by/4.0/>.

References

1. Ferlay J, Soerjomataram I, Dikshit R, Eser S, Mathers C, Rebelo M, et al. Cancer incidence and mortality worldwide: sources, methods and major patterns in GLOBOCAN 2012. *Int J Cancer*. 2015;136(5):E359–86.
2. Allemani C, Weir HK, Carreira H, Harewood R, Spika D, Wang XS, et al. Global surveillance of cancer survival 1995–2009: analysis of individual data for 25,676,887 patients from 279 population-based registries in 67 countries (CONCORD-2). *Lancet*. 2015;385(9972):977–1010.
3. Monig S, Baldus SE, Collet PH, Zirbes TK, Bollschweiler E, Thiele J, et al. Histological grading in gastric cancer by Goseki classification: correlation with histopathological subtypes and prognosis. *Anticancer Res*. 2001;21(1B):617–20.
4. Luebke T, Baldus SE, Grass G, Bollschweiler E, Thiele J, Dienes HP, et al. Histological grading in gastric cancer by Ming classification: correlation with histopathological subtypes, metastasis, and prognosis. *World J Surg*. 2005;29(11):1422–7 (**Epub 2005/10/14 (discussion 8)**).
5. Hanahan D, Weinberg RA. The hallmarks of cancer. *Cell*. 2000;100(1):57–70.
6. Hanahan D, Weinberg RA. Hallmarks of cancer: the next generation. *Cell*. 2011;144(5):646–74.

7. Boussioutas A, Li H, Liu J, Waring P, Lade S, Holloway AJ, et al. Distinctive patterns of gene expression in premalignant gastric mucosa and gastric cancer. *Cancer Res.* 2003;63(10):2569–77.
8. Benjamini Y, Drai D, Elmer G, Kafkafi N, Golani I. Controlling the false discovery rate in behavior genetics research. *Behav Brain Res.* 2001;125(1–2):279–84.
9. Busuttill RA, George J, Tothill RW, Ioculano K, Kowalczyk A, Mitchell C, et al. A signature predicting poor prognosis in gastric and ovarian cancer represents a coordinated macrophage and stromal response. *Clin Cancer Res.* 2014;20(10):2761–72 (**Epub 2014/03/25**).
10. Ooi CH, Ivanova T, Wu J, Lee M, Tan IB, Tao J, et al. Oncogenic pathway combinations predict clinical prognosis in gastric cancer. *PLoS Genet.* 2005;5(10):e1000676 (**Epub 2009/10/03**).
11. Cancer Genome Atlas Research N. Comprehensive molecular characterization of gastric adenocarcinoma. *Nature.* 2014;513(7517):202–9.
12. Horvath LG, Lelliott JE, Kench JG, Lee CS, Williams ED, Saunders DN, et al. Secreted frizzled-related protein 4 inhibits proliferation and metastatic potential in prostate cancer. *Prostate.* 2007;67(10):1081–90 (**Epub 2007/05/04**).
13. McCall MN, Uppal K, Jaffee HA, Zilliox MJ, Irizarry RA. The Gene Expression Barcode: leveraging public data repositories to begin cataloging the human and murine transcriptomes. *Nucleic Acids Res.* 2011;39(Database issue):D1011–5.
14. Szasz AM, Lanczky A, Nagy A, Forster S, Hark K, Green JE, et al. Cross-validation of survival associated biomarkers in gastric cancer using transcriptomic data of 1065 patients. *Oncotarget.* 2016;7(31):49322–33 (**Epub 2016/07/08**).
15. Aguirre-Gamboa R, Gomez-Rueda H, Martinez-Ledesma E, Martinez-Torteya A, Chacolla-Huaringa R, Rodriguez-Barrientos A, et al. SurvExpress: an online biomarker validation tool and database for cancer gene expression data using survival analysis. *PLoS ONE.* 2013;8(9):e74250 (**Epub 2013/09/26**).
16. Gao J, Aksoy BA, Dogrusoz U, Dresdner G, Gross B, Sumer SO, et al. Integrative analysis of complex cancer genomics and clinical profiles using the cBioPortal. *Sci Signal.* 2013;6(269):11.
17. Cerami E, Gao J, Dogrusoz U, Gross BE, Sumer SO, Aksoy BA, et al. The cBio cancer genomics portal: an open platform for exploring multidimensional cancer genomics data. *Cancer Discov.* 2012;2(5):401–4.
18. Jassal B, Matthews L, Viteri G, Gong C, Lorente P, Fabregat A, et al. The reactome pathway knowledgebase. *Nucleic Acids Res.* 2020;48(D1):D498–503 (**Epub 2019/11/07**).
19. Melani M, Simpson KJ, Brugge JS, Montell D. Regulation of cell adhesion and collective cell migration by hindsight and its human homolog RREB1. *Curr Biol.* 2008;18(7):532–7 (**Epub 2008/04/09**).
20. Jiang H, Li Q, He C, Li F, Sheng H, Shen X, et al. Activation of the Wnt pathway through Wnt2 promotes metastasis in pancreatic cancer. *Am J Cancer Res.* 2014;4(5):537–44.
21. Karim RZ, Gerega SK, Yang YH, Horvath L, Spillane A, Carmalt H, et al. Proteins from the Wnt pathway are involved in the pathogenesis and progression of mammary phyllodes tumours. *J Clin Pathol.* 2009;62(11):1016–20.
22. Huang D, Yu B, Deng Y, Sheng W, Peng Z, Qin W, et al. SFRP4 was overexpressed in colorectal carcinoma. *J Cancer Res Clin Oncol.* 2010;136(3):395–401 (**Epub 2009/09/05**).
23. Wu Y, Bai J, Li Z, Wang F, Cao L, Liu C, et al. Low expression of secreted frizzled-related protein 4 in aggressive pituitary adenoma. *Pituitary.* 2015;18(3):335–42.
24. Brebi P, Hoffstetter R, Andana A, Ili CG, Saavedra K, Viscarra T, et al. Evaluation of ZAR1 and SFRP4 methylation status as potentials biomarkers for diagnosis in cervical cancer: exploratory study phase I. *Biomarkers: Biochem Indic Of Expo, Response, Susceptibility To Chem.* 2014;19(3):181–8.
25. Cheng YY, Yu J, Wong YP, Man EP, To KF, Jin VX, et al. Frequent epigenetic inactivation of secreted frizzled-related protein 2 (SFRP2) by promoter methylation in human gastric cancer. *Br J Cancer.* 2007;97(7):895–901.
26. Vincent KM, Postovit LM. A pan-cancer analysis of secreted Frizzled-related proteins: re-examining their proposed tumour suppressive function. *Sci Rep.* 2017;7:42719 (**Epub 2017/02/22**).
27. Lee KW, Lee SS, Hwang JE, Jang HJ, Lee HS, Oh SC, et al. Development and validation of a six-gene recurrence risk score assay for gastric cancer. *Clin Cancer Res.* 2016;22(24):6228–35 (**Epub 2016/09/23**).
28. Cheong JH, Yang HK, Kim H, Kim WH, Kim YW, Kook MC, et al. Predictive test for chemotherapy response in resectable gastric cancer: a multi-cohort, retrospective analysis. *Lancet Oncol.* 2018;19(5):629–38 (**Epub 2018/03/24**).
29. Nfonsam LE, Jandova J, Jecius HC, Omesiete PN, Nfonsam VN. SFRP4 expression correlates with epithelial mesenchymal transition-linked genes and poor overall survival in colon cancer patients. *World J Gastrointest Oncol.* 2019;11(8):589–98 (**Epub 2019/08/23**).
30. Lamouille S, Xu J, Derynck R. Molecular mechanisms of epithelial-mesenchymal transition. *Nat Rev Mol Cell Biol.* 2014;15(3):178–96.
31. Mahdi T, Hanzelmann S, Salehi A, Muhammed SJ, Reinbothe TM, Tang Y, et al. Secreted frizzled-related protein 4 reduces insulin secretion and is overexpressed in type 2 diabetes. *Cell Metab.* 2012;16(5):625–33.
32. Mizuno S, Kobayashi M, Tomita S, Miki I, Masuda A, Onoyama M, et al. Validation of the pepsinogen test method for gastric cancer screening using a follow-up study. *Gastric Cancer.* 2009;12(3):158–63 (**Epub 2009/11/06**).
33. Marrelli D, Pinto E, De Stefano A, Farnetani M, Garosi L, Roviello F. Clinical utility of CEA, CA 19–9, and CA 72–4 in the follow-up of patients with resectable gastric cancer. *Am J Surg.* 2001;181(1):16–9.
34. Jin Z, Jiang W, Wang L. Biomarkers for gastric cancer: progression in early diagnosis and prognosis (Review). *Oncology letters.* 2015;9(4):1502–8.
35. Kanda M, Kodera Y. Recent advances in the molecular diagnostics of gastric cancer. *World J Gastroenterol.* 2015;21(34):9838–52.
36. D’Ugo D, Biondi A, Tufo A, Persiani R. Follow-up: the evidence. *Dig Surg.* 2013;30(2):159–68.

Publisher’s Note Springer Nature remains neutral with regard to jurisdictional claims in published maps and institutional affiliations.