



Review

Animal Models of Colorectal Cancer: From Spontaneous to Genetically Engineered Models and Their Applications

Elisabete Nascimento-Gonçalves ^{1,†}, Bruno A.L. Mendes ^{1,†}, Rita Silva-Reis ^{1,†} , Ana I. Faustino-Rocha ^{1,2,*},
Adelina Gama ^{3,4} and Paula A. Oliveira ^{1,4,*} 

¹ Center for the Research and Technology of Agro-Environmental and Biological Sciences (CITAB), University of Trás-os-Montes and Alto Douro (UTAD), 5000-801 Vila Real, Portugal; elisabete.nascimento.g@gmail.com (E.N.-G.); b.alex.mendes@hotmail.com (B.A.L.M.); ritareis96@hotmail.com (R.S.-R.)

² Department of Zootechnics, School of Sciences and Technology, University of Évora, 7000-812 Évora, Portugal

³ Department of Veterinary Sciences, University of Trás-os-Montes and Alto Douro (UTAD), 5000-801 Vila Real, Portugal; agama@utad.pt

⁴ Animal and Veterinary Research Center (CECAV), University of Trás-os-Montes and Alto Douro (UTAD), 5000-801 Vila Real, Portugal

* Correspondence: anafaustino@uevora.pt (A.I.F.-R.); pamo@utad.pt (P.A.O.)

† Authors contributed equally to the work.

Abstract: Colorectal cancer is one of the most common gastrointestinal malignancies in humans, affecting approximately 1.8 million people worldwide. This disease has a major social impact and high treatment costs. Animal models allow us to understand and follow the colon cancer progression; thus, in vivo studies are essential to improve and discover new ways of prevention and treatment. Dietary natural products have been under investigation for better and natural prevention, envisioning to show their potential. This manuscript intends to provide the readers a review of rodent colorectal cancer models available in the literature, highlighting their advantages and disadvantages, as well as their potential in the evaluation of several drugs and natural compounds' effects on colorectal cancer.

Keywords: spontaneous models; induced models; genetically engineered models



Citation: Nascimento-Gonçalves, E.; Mendes, B.A.L.; Silva-Reis, R.; Faustino-Rocha, A.I.; Gama, A.; Oliveira, P.A. Animal Models of Colorectal Cancer: From Spontaneous to Genetically Engineered Models and Their Applications. *Vet. Sci.* **2021**, *8*, 59. <https://doi.org/10.3390/vetsci8040059>

Academic Editor: Patrick Butaye

Received: 5 February 2021

Accepted: 29 March 2021

Published: 5 April 2021

Publisher's Note: MDPI stays neutral with regard to jurisdictional claims in published maps and institutional affiliations.



Copyright: © 2021 by the authors. Licensee MDPI, Basel, Switzerland. This article is an open access article distributed under the terms and conditions of the Creative Commons Attribution (CC BY) license (<https://creativecommons.org/licenses/by/4.0/>).

1. Introduction

Worldwide, colorectal cancer is the third most common cancer in men and second in women [1]. Many risk factors have been considered for the development of colorectal cancer, such as the ingestion of processed meat, alcoholic drinks, body fatness, low intake of vegetables and fruits, smoking, and other concomitant diseases, such as inflammatory bowel disease (IBD), Crohn's disease, and ulcerative colitis [2,3].

Colorectal cancer is characterized by the invasion of neoplastic epithelial cells below the muscularis mucosae of the colorectal wall [4]. Its evolution is slow and characterized by different stages. Progressive changes in the amount or activity of proteins that regulate cell proliferation, differentiation, and cell survival occur, leading to a disorder in cell replication that contributes to the development of proliferative lesions, such as adenoma [5]. Subsequently, the intestinal epithelium undergoes a malignant transformation to invasive carcinoma [4,5]. Besides adenomas, hyperplastic polyps, serrated adenomas, flat adenomas, and dysplastic lesions are also observed in the colon as other types of preneoplastic lesions [5]. In humans, colorectal cancer is histologically classified as an adenocarcinoma [4,6]. In Figure 1 we can observe the progression from normal intestinal epithelium to carcinoma.

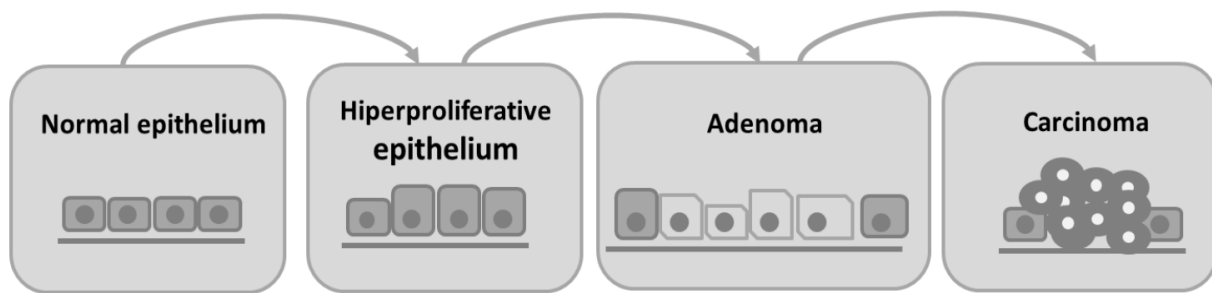


Figure 1. Schematic representation of adenoma–carcinoma multistep model. The normal cells of colon epithelium progress sequentially to a hyperproliferative epithelium, premalignant adenoma, and then carcinoma.

About 97% of colorectal cancers are spontaneous, and the remaining are due to one of two autosomal dominant inherited diseases: hereditary non-polyposis colorectal cancer (HNPCC) and familial adenomatous polyposis (FAP) [4,5]. The genetic mechanisms of spontaneous CRC are present in the adenoma–carcinoma sequence. Carcinogenesis is initiated with inactivating mutations in the tumor suppressor adenomatous polyposis coli (APC) gene, followed by an accumulation of mutations in the genes K-RAS, PI3K, DCC, SMAD2, SMAD4, and lastly the mutation in the tumor suppressor gene TP53 that determines the progression from the non-invasive to the invasive CRC [7].

Laboratory rodents are commonly used as animal models in experimental research because they are easy and cheap to maintain, their physiology and genetics are well studied, and they are mammals like humans [8]. They allow us to understand and follow the progression of diseases, enable the discovery and development of new preventive strategies, which can be later used in clinical trials. An ideal animal model of human disease should be simple, not expensive, and mimic the disease in terms of morphology, biochemical alterations, and biological behavior [4,9]. Several works have reviewed the use of animal models of CRC [10]. However, this manuscript not only intends to augment the information on rodent models of CRC, highlighting their advantages and disadvantages, but also to review their applications and how they can be used to evaluate natural compounds, nutrition habits, and drugs.

2. Rat and Mouse Colon and Rectum: Anatomy and Histology

The rat and mouse intestine are similar to that of humans concerning development, structure, and functions [9]. The large intestine comprises the cecum, the colon, the rectum, and anus, and it is responsible for the absorption of water and salt from feces [11] (Figure 2).

The cecum is a curved blind sac responsible for bacterial fermentation and empties into the proximal/right colon. Even though the rodents' colon and rectum represent a percentage of the total size of the large intestine similar to the humans, the cecum is much bigger in rats, which may be attributed to the high fiber content of their diet [12]. The colon continues toward the pyloric region of the stomach and has the same histological structure of the gastrointestinal tract: mucosa, submucosa, inner circular and outer longitudinal tunica muscularis, and serosa [1]. Despite histological similarities, rats and mice do not have adipose tissue in the submucosa, unlike humans who have it in abundance. The colon can be divided into ascending (it leads cranially to the thoracic cavity), transverse colon (from the left to the right side), and descending colon (on the right side of the abdominal cavity). The rodents' middle and distal colon corresponds to the human left colon [13]. The rectum is relatively short and indistinct from the distal colon. The anorectal junction has no stratified columnar epithelium, and the anal canal is lined by keratinized stratified squamous epithelium [11].

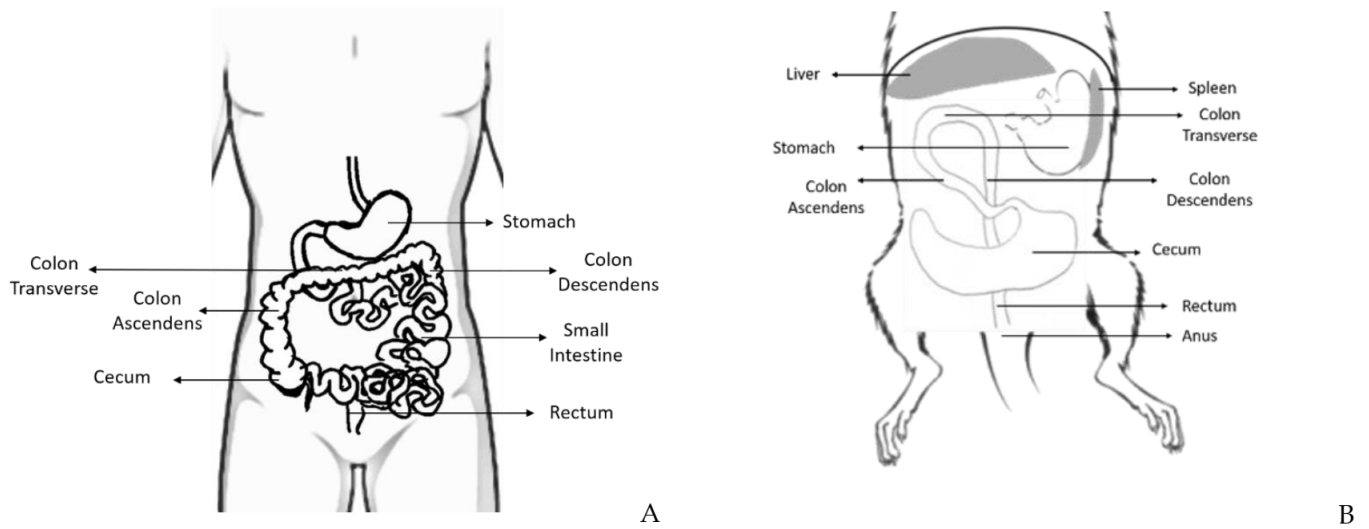


Figure 2. Schematic representation of some parts of the human (A) and rodent (B) digestive system, where is possible to observe the distinct portions of the large intestine: cecum, colon (ascendant, transverse, and descendent), rectum and anus, and its topographic anatomy. Human and rodent in supine position.

3. Rodents as Models of Colorectal Cancer

Although there is no ideal animal model that replicates all human disease aspects, the rodents are accepted as good models to study colorectal carcinogenesis because of their physiological similarity with humans, reproducible tumor induction, and the possibility to study the disease biopathology and test strategies for cancer prevention and treatment [4].

An ideal rodent model of colorectal cancer should develop carcinomas in the colon and rectum, with a high incidence in a short period, allow non-invasive monitoring of disease progression, and follow the histological and molecular characteristics of human colorectal cancer [8,13]. The models available to study colorectal cancer include spontaneous, induced, genetically engineered, xenograft, and syngeneic models (Figure 3).

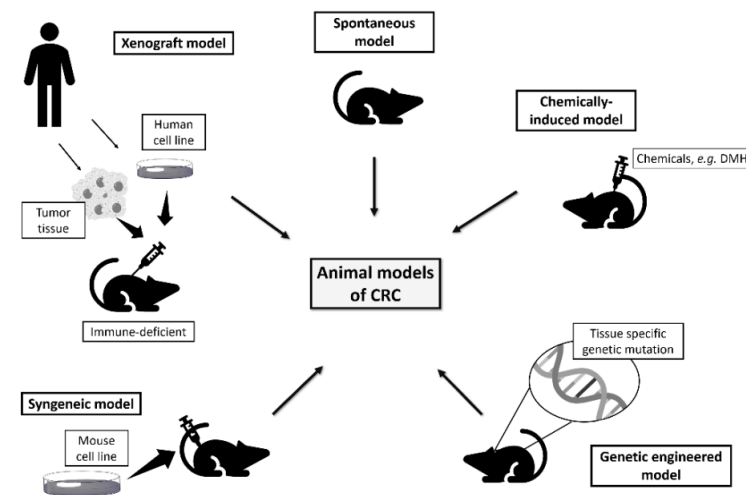


Figure 3. Rodent models available to study human colorectal cancer.

3.1. Spontaneous Models

Spontaneous development of colorectal cancer in rats and mice is rare, although some cases were reported in the literature. In 1969 it was reported that C57BL mice developed adenomas in the colon [9], and in 1975 Miyamoto and colleagues showed that 30–40% of animals from the Wistar-Furth/Osaka strain developed adenocarcinomas [14]. More recently, in 2009, Newark and colleagues showed that C57BL/6J developed cancer in

the large intestine with an incidence of 1% [15]. These models are not very used due to unpredictability and low reproducibility [4]. In 40% of the spontaneous rat models, the period of latency is approximately eight months [16,17].

3.2. Induced Models

Colorectal tumors can be induced in rodents through the administration of chemical carcinogens alone or in combination [5]. There are two types of chemical carcinogenic agents: direct and indirect. Direct carcinogens do not need to be metabolized to induce cancer, while the indirect agents are administered in their inactive form and only acquire carcinogenic activity when biotransformed and converted into their active form in the liver [5,6].

3.2.1. Chemically Induced Models

In 1941, Lorenz and Stewart were the first to induce intestinal mouse tumors by feeding them with dibenzanthracene or methylcholanthrene [4], leading to the development of adenocarcinoma of the small intestine [4]. Later, in 1947, Lisco and colleagues induced carcinomas in the rat colon through feeding with radioactive yttrium [17]. Some years later, in 1963, Laquer and colleagues stated hydrazines are colonic carcinogens. Rats developed adenocarcinomas after feeding with a large quantity of cycad flour, which have hydrazine called cycasin, a form of methylazoxymethanol (MAM) [18,19].

Over the years, experimental research was conducted to discover chemical carcinogens specific for colorectal cancer such as 3,2'-dimethyl-4-aminobiphenyl (DMAB), alkyl-nitrosamines such as N-methyl-N-nitrosourea (MNU) and N-methyl-N-nitrosoguanidine (MNNG), 1,2-dimethylhydrazine (DMH), azoxymethane (AOM), and 2-amino-1-methyl-6-phenylimidazo (4,5-b) pyridine (PhIP) [20].

These carcinogens can be indirect-acting agents (DMAB, DMH, AOM, and PhIP), which need an enzymatic reaction to be converted into an active form, or direct-acting carcinogens (MNU and MNNG) that do not need biological catalysis [5].

3,2'-Dimethyl-4-Aminobiphenyl (DMAB)

Walpole and colleagues, in 1952, described the first induction of intestine cancer in male rats by subcutaneous administration of DMAB dissolved in arachis oil, at a mean total dose of 2.8 g/kg, for 141 days [21]. After that, other researchers evaluated the carcinogenic potential of this compound [22]. Of these works, the one made by Reddy et al. [23] stands out; they showed that 30% of F344 rats fed with a low-fat diet and 75% of animals fed with a high-fat diet developed colon cancer after being injected with DMAB (50 mg/kg), once a week, for 20 weeks. DMAB forms carcinogenic DNA adducts through the N-hydroxylation by cytochrome P450, followed by O-acetylation and hydrolysis, reacting with DNA [23].

Nevertheless, this model has some disadvantages because multiple DMAB administrations are needed [23–25] and it has low specificity, leading to the development of tumors in various other tissues, such as salivary glands, mammary glands, urinary bladder, ear, and skin [6]. The studies performed using this model may be consulted in Table 1.

Table 1. Studies using the DMAB model to study different therapeutic approaches for colorectal cancer.

Animal Strain and Gender	Carcinogenic Administration Route	Drugs or Compounds Evaluated (Classification)	Dose/Treatment	Therapeutic Effects (Ref)
F344 male rats	s.c. 100 mg/kg b.w.	Copper-zinc (CU), manganese (Mn), and iron (Fe)	p.o. (0.8 or 5.1 µg CU/g diet; 0.6 or 17 µg Mn/g diet and 37 or 140 µg Fe/g diet) 3.5 wks before DMAB and for 8 wks	Increased neoplastic lesions by low doses of copper and manganese relative to iron [25]
	s.c. 100 mg/kg b.w. 1/wk for 2 wks	Selenium (nutritionally essential trace element)	p.o. (0, 0.1 or 2.0 mg selenium/kg diet as selenite, selenate or selenomethionine) 4 wks before DAMBP for 12 wks	Dietary administration of selenium in the form of the inorganic salts selenite and selenate reduced colon ACF [26]
	s.c. 100 mg/kg b.w.	Celecoxib (selective cyclooxygenase-2 inhibitor)	Diet supplemented (0, 500, 1000, or 1500 ppm celecoxib) 2 wks before DMABP and for 2 days	Chemopreventive effect for colorectal cancer in a dose-response manner [27]
	Gavage 50 or 5 mg/kg b.w. 1/wk for 4 wks	Acetaminophen	Diet supplemented (1000 ppm) 2 wks before DMAB and for 6 wks	Protective effect on the development of colorectal carcinogenesis [28]

ACF: aberrant crypt foci; b.w.: body weight; p.o.: per os; s.c.: subcutaneous injection; wk: week; wks: weeks.

N-Methyl-N-Nitrosourea (MNU) and N-Methyl-N-Nitrosoguanidine (MNNG)

Since 1967, after discovering that oral administration of alkylnitrosamide induced adenocarcinomas in the glandular stomach in rats, other works were performed envisioning to address the carcinogenic potential of MNNG and MNU [4,13]. MNU and MNNG are direct DNA alkylating agents; they transfer a methyl group to nucleobases leading to the accumulation of genetic mutations [13]. Intra-rectal instillation of MNNG during 20 weeks at a dose of 1–3 mg/rat/week induced colon cancer in 100% of F344 rats [13,18,20]. Female ICR/Ha Swiss mice instilled with 0.3 mg of MNU intrarectally, three times a week for 10 weeks, developed tumors in the distal colon, rectum, and anus with an incidence of 78% [29]. The intrarectal administration allows a more selective induction in the distal colon and rectum, which is a huge advantage of this model. However, a precise technique is needed, and the quantification of drug volume is difficult [18,20]. In addition, the animals need to be kept in an inverted position for one minute after administration to prevent the return of the compound to the anus [19,20].

This model can be used to evaluate the therapeutic effects of several compounds on colorectal cancer development. More details about colorectal cancer studies using the MNU model to evaluate the influence of diet, drugs, and natural compounds can be consulted in Table 2.

Table 2. Studies using the MNU model to evaluate the effects of different therapeutic strategies for colorectal cancer.

Animal Strain and Gender	Carcinogenic Administration Route	Drugs or Compounds Evaluated (Classification)	Dose/Treatment	Therapeutic Effects [Ref]
F344/NSlc female rats	i.r. 2 mg 3x/wk for 3 wks	Ursodeoxycholic acid (UDCA) and 5-aminosalicylic acid (5-ASA) (non-steroid anti-inflammatory drug)	p.o. (0%, 0.11 or 0.02%) for 30 wks	Inhibited colorectal cancer development [29]
Sprague Dawley female rats	i.r. 10 mg/Kg 3x/wk for 4 wks	Omega 3 polyunsaturated fatty acid (Omega-3PUFA)	i.g. (2 g/kg) daily for 4 wks	Attenuated CRC by blocking PI3K/AKT/Bcl-2 [30]
F344 male rats	i.r. 2 mg/rat 3x/wk for 4 wks	4-[3,5-Bis(trimethylsilyl)benzamido]benzoic acid (TAC-101) (retinobenzoic acid derivative)	p.o. (0.8 or 8 mg/kg for 1 or 4 wks) for 20 wks	Inhibited colorectal cancer development [31]
	i.r. 4 mg on days 1 and 4	Calcium and cholic (bile acid)	d.t. (0.2% cholic acid or 1.6% calcium) for 28 wks	Increased colorectal tumor development by bile acid and no protective effect of calcium [32]

b.w.: body weight; d.t.: diet supplement. i.g.: intra-gastrically; i.r.: intra-rectal administration; p.o.: per os; wks: weeks.

1,2-Dimethylhydrazine (DMH)

DMH is an alkylating agent that needs liver metabolic activation to become a carcinogen. Therefore, DMH is oxidized in the liver into azoxymethane and is then hydroxylated to form methylazoxymethanol (MAM). MAM is converted to formalin and methyldiazonium ion that are responsible for DNA, RNA, and protein alkylation [4,33].

The induction of colon cancer in rats with this compound was described for the first time in 1967 by Druckrey and colleagues, through its subcutaneous administration, at a dose of 21 mg/kg [20,34]. They showed that DMH cancer induction in the distal portion of the colon is histopathologically similar to humans [16,33]. These results were later confirmed by other authors [6,13,19].

DMH can be administered through different routes, including subcutaneous, intraperitoneal, oral, and intrarectal [4]. For example, a subcutaneous injection of 20 mg/kg DMH, once a week, for 20 weeks induces colonic adenomas in about 60% of male F344 rats [21]. Oral administration of 20 mg/kg showed a lower tumor incidence in male Wistar rats, depending on the nature of the diet [35]. Intrarectal administration of 250 mg/kg of DMH in Sprague-Dawley rats induced multiple colorectal adenocarcinomas with a latency period of 34 weeks [36]. Of the routes of administration presented, subcutaneous seems to be the one that leads to high incidence and consequently the most used in chemopreventive studies [4]. More information about other studies with this model may be consulted in Table 3.

Although DMH-induced colon tumors in rodents are similar to human colon tumors [21], this model has disadvantages, e.g., multiple injections of DMH are necessary to induce tumors, it is characterized by at least six months of the latency period, and no hepatic metastases were observed until now (Figure 4C) [20].

Azoxymethane (AOM)

In 1970, Druckrey and colleagues showed for the first time the ability of azoxymethane (AOM) to induce intestinal tumors. Other works were then published confirming that AOM is a potent inducer of carcinomas of the large intestine in various strains of rats, such as F344, and mice, such as C57BL/6J and SWR/J, among others [21,37,38].

AOM is a metabolite of DMH that has been more frequently used in the induction of colon tumors than DMH, given some of its advantages over the original compound, such as its increased efficacy and greater chemical stability [37]. Like DMH, AOM is also an indirect carcinogenic compound, and it is activated in the liver by N-oxidation through cytochrome P450 2E1, producing metabolites such as methylazoxymethanol and methyl-diazoxide, which induce inflammation [39]. AOM seems to be a more effective carcinogen than DMH because it requires fewer reactions to be activated [6].

AOM induces rodent colon carcinogenesis when administered over 6–8 weeks via subcutaneous or intraperitoneal injection, with a latency period ranging from 20 to 30 weeks [13]. The distribution of tumors developed in the small intestine and colon (predominantly in the distal colon) is similar to that observed in the human colon [21,40]. Histological and histochemical properties of AOM-induced tumors are similar to those described in humans, being classified as adenomas and adenocarcinomas. Using this induction model, it was possible to identify metastases in lymph nodes and the liver similar to those described in humans [6,38].

Details concerning studies using AOM induction model to understand the influence of diet, drugs, or natural compounds in colorectal cancer can be consulted in Table 4.

Table 3. Studies using the DMH model to study different therapeutic approaches for colorectal cancer.

Animal Strain and Gender	Carcinogenic Administration Route	Drugs or Compounds Evaluated (Classification)	Dose/Treatment	Therapeutic Effects (Ref)
Wistar male rats	i.p. 40 mg/kg b.w. 2x/wk for 2 wks	Hyperbaric oxygen (HBO2)	HBO2 alone or DMH + HBO2; 15 daily 90 min HBO2 sessions every 24 h at 2.0 atm absolute pressure	HBO2 had a protective effect in colorectal cancer, demonstrated by the decrease in COX-2 [41]
	s.c. 40 mg/kg b.w. 2x/wk for 2wks	Astaxanthin	p.o. (15 mg/kg b.w.) 1 wk before and after DMH for 16 wks	Positive effects against colorectal cancer [42]
	s.c. 30 mg/kg 1x/week for 18 wks	Aspirin (a non-steroidal anti-inflammatory drug)	Gavage (0, 5, 30 or 60 mg/kg diet) daily for 18 wks	Reduced tumor incidence [43]
	s.c. 50 mg/kg b.w. 1 wk after diet supplemented and physical activity	Probiotic soy product and physical exercise	Gavage (3 mL/kg b.w./day fermented or unfermented soy products) and t.r. (60 min/day at 3–5% inclination at 355 m/min or 17–20 m/min) alone or in combination for 6 wks	No inhibition of colorectal cancer by the ingestion of fermented soy products or physical activity or by a combination of both [44]
	s.c. 40 mg/Kg b.w. for 8 wks	Epigallocatechin gallate (EGCG)	p.o. (50, 100 or 200 mg/Kg b.w.; once daily) for 8 wks	EGCG inhibited the formation of DMH-induced CRC by regulating key pathways, namely p53 and PI3K-Akt signaling pathways and I-kappaB kinase/NF-kappaB signal pathways, apoptosis signal pathways and MAPK cascades, involved in tumorigenesis [29]
Wistar female rats	s.c. 20 mg/kg b.w. for 20 wks	High fiber diet and aspirin	Exp1: gavage (10 or 30 mg/kg/day b.w aspirin) Exp.2: diet supplemented with high fiber (16% crude fiber) from the beginning and for 32 wks	Protective effects of high fiber diet and aspirin. The aspirin effect is dose-related [45]
	s.c. 20 mg/Kg b.w. for 5 wks	Methanolic extract of Muntingia calabura L. leaves (MEMC)	p.o. (100 or 200 mg/Kg b.w.) all days till the 15 week	MEMC offered a protective role against experimentally induced CRC via suppressing hyperproliferation and inflammation [46]

Table 3. Cont.

Animal Strain and Gender	Carcinogenic Administration Route	Drugs or Compounds Evaluated (Classification)	Dose/Treatment	Therapeutic Effects (Ref)
F344 male rats	Exp.1: s.c.20 mg/kg b.w. daily for 16 wks; Exp.2: s.c. 20 mg/kg b.w. daily for 12 wks	Cellulose, calcium and folic acid	p.o. (Exp.1: 10% cellulose for 30 wks; Exp.2: 250 or 500 mg/100 g diet calcium + 0 or 0.1 mg/100 g folic acid for 22 wks)	Protective effects of cellulose and reduced tumor number and multiplicity of calcium [47]
	i.p. 40 mg/kg b.w. once weekly for 4 wks	Adlay bran ethanol extract (ABE-Ea)	p.o. (8.64, 17.28 or 34.56 mg/day ABE-Ea) 1 wk before 1st DMH and for 9 or 18 wks	Inhibited preneoplastic lesions [48]
	i.p. 30 mg/kg weekly for 10 wks	Calcium and vitamin 3 in low or high-fat diet	p.o. (0.5 or 1%supplemental calcium and 1000 or 2000 IU/kg diet vitamin 3 in combination with a low-fat diet, 0.5% corn oil, or high-fat diet, 20% corn oil) 2 wks before DMH and for 20 wks	Preventive effects only in a high-fat diet [49]
	s.c. 100 mg/kg b.w. 2x/wk for 2 wks	Arabinoxylan-oligosaccharides (AXOS) (prebiotic)	p.o. (60 g/kg diet) 10 days before DMH and for 13 wks	Chemopreventive effect [50]
Sprague-Dawley male rats	Gavage 30 mg/kg	Aspirin (non-steroidal anti-inflammatory drug)	Exp.1: s.c.(100 mg/kg/day aspirin) 1 wk before and after DMH and for 1 wk; Exp.2: s.s. (50 mg/kg/day aspirin) 4 wks after DMH and for 36 wks)	Reduced tumor incidence when aspirin was administered 1 wk before or after DMH but no effect when administered 4 wks after [51]
	s.c. 30 mg/kg b.w. for 6 wks	etoricoxib (selective cyclooxygenase-2 inhibitor) and diclofenac (a preferential cyclooxygenase-2 inhibitor)	Gavage (0.6 mg/kg b.w. etoricoxib and 8 mg/kg b.w. diclofenac) daily for 6 wks	Chemopreventive effect of both compounds [52]
	s.c. 20 mg/kg b.w. 2x/wk for 4 wks	Soy isoflavones	p.o. (1, 10, 50, 150 or 500 mg/kg diet) 1 wks after DMH and for 12 wks	Inhibited colorectal cancer in dose-independent manner [53]
	s.c. 20 mg/kg b.w. weekly from day 3 and for 12 wks	β -carotene (derived from carrots) sodium ascorbate (L-ascorbic acid) and cellulose	Diet supplemented (0.005% β -carotene or 0.02% sodium ascorbate or 1.5% cellulose) 12 wks before and for 28 wks	Only β -carotene showed an inhibitory effect of carcinogenesis [54]
	s.c. 20 mg/kg 1x/wk 13 wks	Wheat bran	Diet supplemented (fiber-free diet or 20% wheat bran supplement) for 31 wks	Increased colorectal carcinogenesis [55]
	s.c. 20 mg/kg b.w. 6x/wk	Milk and calcium	Diet supplemented (37 g/kg diet of milk and 40 mg/kg rat/day of calcium carbonate)	Protective activity by milk supplementation [56]
Sprague-Dawley male and female rats	s.c. 21 mg/kg 1x/week for 18 wks	Calcium	d.w.(3.2 g/L calcium lactate) daily from the start until 25–34 wks	Inhibited colorectal cancer [57]

b.w.: body weight; d.w.: drinking water; i.p.: intraperitoneal injection; p.o.: per os; s.c.: subcutaneous injection; t.r.: treadmill running; wk: week; wks: weeks.

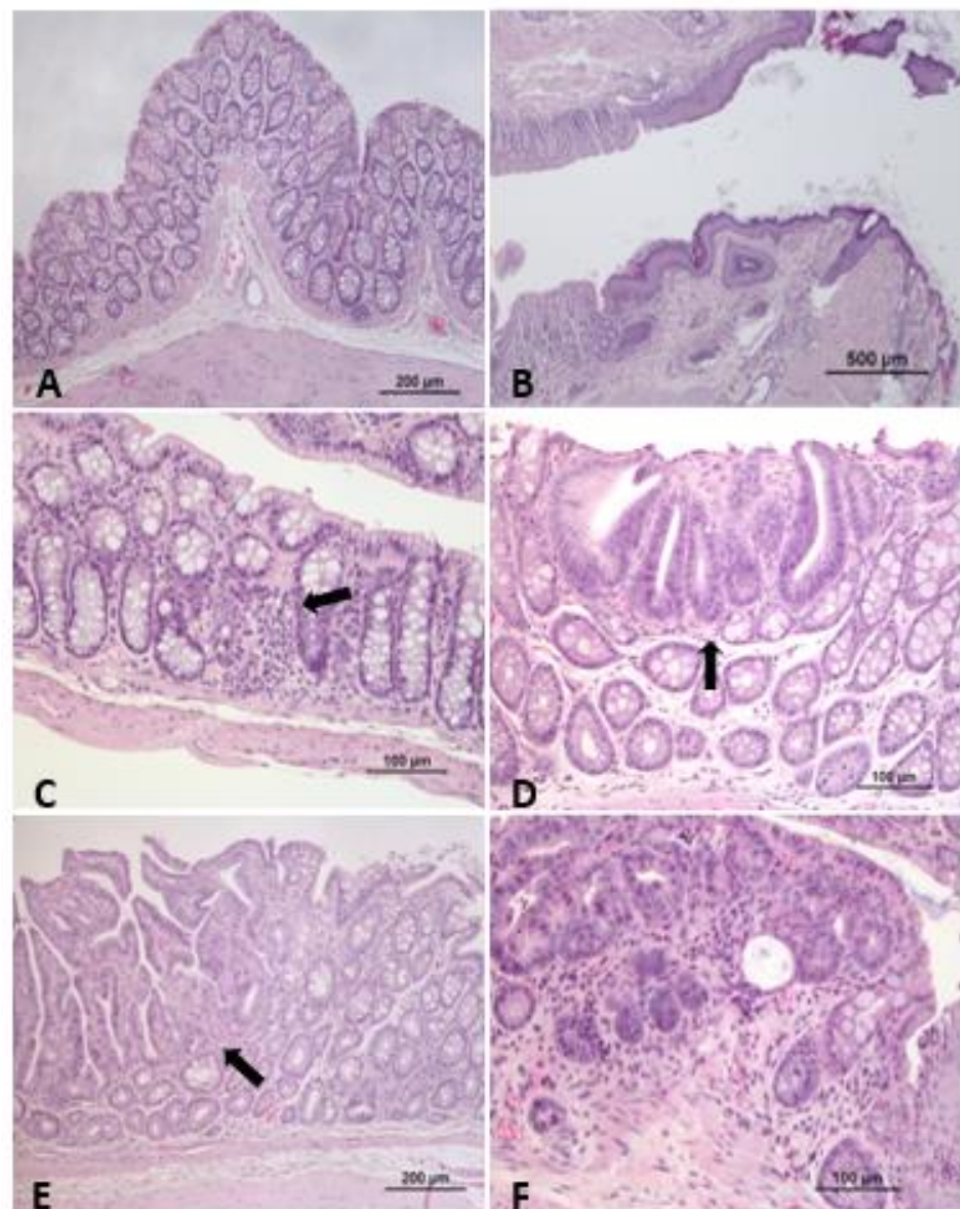


Figure 4. Representative photomicrographs of mouse/rat colon and rectum. (A) Rat colon with no alterations. (B) Mouse anorectal junction, with no alterations. (C) Mouse colon showing mild inflammatory infiltrate at the mucosa (DMH induction CRC model). (D) Rat colon with the presence of focal mild epithelial dysplasia (DMH induction CRC model). (E) Rat colon adenoma, characterized by a benign epithelial tubulopapillary neoplastic proliferation, non-invasive (DMH induction CRC model). (F) Mouse rectum, adenocarcinoma, characterized by a carcinomatous proliferation, associated with stromal invasion and inflammation (DMH induction CRC model). HE staining.

Table 4. Studies using the AOM model to evaluate several therapeutic strategies for colorectal cancer.

Animal Strain and Gender	Carcinogenic Administration Route	Drugs or Compounds Evaluated (Classification)	Dose/Treatment	Therapeutic Effects (Ref)
F344 male rats	s.c. injections 15 mg/kg b.w./wk once a week for 2 wks	Ursodeoxycholic acid and cholic acid (bile acids)	p.o.(0.2% or 0.4% cholic acid, 0.2% or 0.4% ursodeoxycholic acid, 0.2% cholic acid + 0.2% ursodeoxycholic acid) for 30 wks	Higher dose of ursodeoxycholic acid reduced the incidence of colorectal tumors [58]
	s.c. 15 mg/kg bw once weekly for 2 wks	Celecoxib (a non-steroidal anti-inflammatory drug)	p.o. (500, 1000 or 1500 ppm) before exposure to AOM, during treatment, and until termination of the study at 52 wks	Chemopreventive activity in all tumor stages [59]
	s.c. 15 mg/kg b.w. 1x/wk for 2 wks	iNOS inhibitor L-N ⁶ -(1-iminoethyl) lysine tetrazole-amide (SC-51), celcoxib (nonsteroidal anti-inflammatory)	p.o. (10, 30 or 100 ppm SC-51; 500 ppm celcoxib; 30 or 100 ppm SC-51 + 500 ppm celcoxib) for 8 wks	The combination of SC-51 with celcoxib was more effective in colorectal cancer prevention than the compounds alone [60]
	s.c. 15 mg/kg b.w. 1x/wk for 3 wks	Rebaudioside A, oleanolic acid, costunolide and soyasosin A2 (terpenoids), liquiritin (flavonoid), phyllodulcin and hydrangenol (isocumarins)	p.o. (200 ppm of each) for 5 wks	Costunolide is the most effective chemopreventive agent [61]
	s.c. 29.6 mg/kg b.w.	Piroxicam (a non-steroidal anti-inflammatory drug) and D, L- α -difluoromethylornithine (DFMO)	p.o. (25, 75 and 150 ppm piroxicam or 400, 1000 and 4000 ppm DFMO) 1 wk after AOM for 26 wks	A combination of piroxicam and DFMO was more effective in the inhibition of colorectal cancer than compounds alone [62]
	s.c. 15 mg/kg b.w. 1x/wk for 2 wks	Phenylethyl-3-methylcaffeate (PEMC)	p.o. (750 ppm) 2 wks before AOM for 52 wks	Inhibited colonic tumors [63]
	s.c. 15 mg/kg b.w. 1x/wk for 2 wks; start 2 wks after diet	Celcoxib (COX-2 inhibitor)	p.o. (1500 ppm) for 50 wks	Chemopreventive activity [64]
	s.c. 15 mg/kg b.w. at 7 and 8 wks of rat age	S-methylmethane thiosulfonate (S-MMTS) (isolate from cauliflower) and sulindac	p.o. (80 ppm S-MMTS, 160 ppm sulindac or 40 ppm S-MMTS + 160 ppm sulindac) 14 wks after AOM for	A combination of S-MMTS and sulindac was more effective in the inhibition of colorectal cancer than compounds alone [65]
	s.c. 15 mg/kg 1x/wk for 2 wks	Naproxen and NO-naproxen (nonspecific nonsteroidal anti-inflammatory drugs)	p.o. (200 or 400 ppm naproxen and 300 or 600 ppm nitric oxide-naproxen) 3 days after AOM for 8 wks	Chemopreventive effects [66]
	15 mg/kg i.p. 1x/wk for 2 wks	Lovastatin (statin) and exisulind (selective apoptotic antineoplastic drug)	p.o. (50 ppm lovastatin, 100, 250 or 1000 ppm exisulind alone or in combination with 50 ppm lovastatin) for for 4 wks	Chemopreventive effects of lovastatin but not exisulind [67]
s.c. 15 mg/kg b.w. 1x/wk for 2 wks	CP-31398 (p53-modulating agent) and celcoxib (non-steroidal anti-inflammatory drug)	Diet supplemented (1, 150 or 300 ppm CP-31398, 300 ppm celcoxib or 1500 ppm CP-31398 + 300 ppm celcoxib) 2 wks after AOM and for 48 wks	A combination of compounds enhanced colorectal cancer chemopreventive efficacy [68]	
s.c. 15 mg/kg b.w. 1x/wk for 2 wks	Aspirin (a non-steroidal anti-inflammatory drug)	p.o. (0, 200 or 400 ppm) daily 2 wks before AOM and for 52 wks	Inhibited incidence and multiplicity of colorectal carcinomas [69]	

Table 4. Cont.

Animal Strain and Gender	Carcinogenic Administration Route	Drugs or Compounds Evaluated (Classification)	Dose/Treatment	Therapeutic Effects (Ref)
	s.c. injection 15 mg/kg b.w. 1x/wk for 2 wks	Prebiotic germinated barley foodstuff (a mixture of insoluble protein and dietary fiber)	Diet supplemented with prebiotic germinated barley foodstuff for 4 wks	Anti-tumorigenicity activity [70]
	i.p. 15 mg/kg b.w.	Aspirin (a non-steroidal anti-inflammatory drug) and α -Difluoromethylornithine (DFMO) (ornithine decarboxylase inhibitor)	p.o. (Exp1.: 0, 200, 600 or 1800 mg/kg/diet of aspirin or 1000 mg/kg diet of DFMO; 8 days before 1st AOM; Exp.2: 200, 600, 1800 mg/kg/diet aspirin or 1000 or 3000 mg/kg/diet of DFMO or 1000 mg/kg/diet DFMO + 200 or 600 mg/kg/diet aspirin; 8 days before 1st) for 43 wks after last AOM	The combination of aspirin and DFMO after AOM reduced colorectal tumors [71]
	s.c. 15 mg/kg b.w. 1x/wk for 2 wks	Vitamin D, acetylsalicylic acid (a non-steroid anti-inflammatory drug) and calcium	Diet supplemented (0, 2500, 5000 or 7500 ppm calcium; 0 or 300 ppm acetylsalicylic acid alone or combination with 0 or 0.02 μ g/kg diet vitamin D) 20 days before AOM and for 18 wks	Increased incidence of tumors with high levels of calcium alone or in combination with vitamin D; Vitamin D with acetylsalicylic acid also increased tumor incidence [72]
	s.c. 8 mg/kg b.w./wk for 10 wks	Dietary wheat bran and dehydrated citrus fiber (in form of orange peel)	Diet supplemented (0 or 15% wheat bran or citrus fiber) for 20 wks	Reduced the risk of colorectal tumors [24]
	s.c. 15 mg/kg 1x/wk for 2 wks)	Tea extracts, Polyphenols and epigallocatechin gallate (EGCG)	d.w. (360 or 3600 ppm black and green tea extracts; 360 or 1800 ppm EGCG; 360 or 1800 black tea polyphenols and 360 or 3600 green tea polyphenols) at 6 wks and for 43 wks	No effect in tumor incidence [73]
	s.c. 15 mg/kg b.w. 1x/wk for 2 wks)	Aspirin, celecoxib, (cyclooxygenase-2 inhibitor), and atorvastatin (3-hydroxy-3-methylglutaryl CoA reductase inhibitors)	Diet supplemented (150 ppm atorvastatin, 600 pp celecoxib, 400 ppm aspirin, 100 ppm atorvastatin + 300 ppm celecoxib or 100 ppm atorvastatin + 200 ppm aspirin) one day after AOM and for 42 wks	Inhibited the incidence and multiplicity of colorectal carcinomas alone or in combination [74]
	s.c. 15 mg/kg b.w. 1x/wk for 2 wks	Grape seed extract (GSE)	Diet supplemented (0.25 or 0.5% (w/w) GSE) 1 wk before AOM, 4 wks last AOM or during all study and for 16 wks	Chemopreventive efficacy against early steps of colorectal carcinogenesis [75]
	s.c. 15 mg/kg b.w. 1x/wk for 2 wks)	Celecoxib (cyclooxygenase-2 inhibitor) in diets high in mixed lipids (HFML) or fish oil (HFFO)	Diet supplemented (0, 250, 500, or 1000 ppm celecoxib with HFML or HFFO diet) one day after AOM and for 26 wks	Preventive effect of low doses of celecoxib in HFFO diet [76]
F344 female rats	i.p. 20 mg/kg b.w.	Polyethylene-glycol (PEG) (non-fermented polymer)	Diet supplemented (3 g/kg b.w./day) 7 days after AOM and for 105 days	Chemopreventive effects [77]
	i.p. 20 mg/kg b.w.	Heme in food (in form of chicken, beef, black pudding)	Diet supplemented (600 g/kg diet chicken, beef and black pudding) 7 days after AOM and for 100 days	Increased colorectal carcinogenesis for all compounds [78]
	s.c. 8 mg/kg b.w./wk for 10 wks	Alfalfa, pectin and wheat bran	Diet supplemented (0 or 15% alfalfa, pectin and wheat bran) for 40 wks after 1st AOM	Inhibited colorectal tumor incidence, especially by pectin or wheat bran [79]
BALB-c female mice	i.p. 15 mg/kg 1x/wk for 2 wks	Kefir (a probiotic fermented milk product)	p.o. (5 mL/kg b.w. fermented kefir milk) for 8 wks	Decreased and prevented the growth of colorectal tumors [80]

Table 4. Cont.

Animal Strain and Gender	Carcinogenic Administration Route	Drugs or Compounds Evaluated (Classification)	Dose/Treatment	Therapeutic Effects (Ref)
Sprague-Dawley male rats	s.c. 15 mg/kg 1x/wk for 2 wks, 28 days after diet supplementation	Amylose maize starch and butyrylated high-amylose maize starch	Diet supplemented (10% of high-amylose maize starch or 10% butyrylated alone or in combination) start at day 0 until euthanasia	The compound combination reduced the risk of developing colorectal cancer [81]
	i.p. 15 mg/kg 1x/wk for 4 wks	indomethacin and copper-indomethacin (non-steroidal anti-inflammatory drug)	i.p. (3.0 mg/kg indomethacin or 3.8 mg/kg copper-indomethacin) daily	Both compounds showed chemopreventive activity, but indomethacin was more effective [82]
	s.c. 15 mg/kg b.w. 1x/wk for 2 wks	R-Flurbiprofen (non-steroidal anti-inflammatory drug)	Gavage (30 mg/kg b.w./per day) 6 days a week, 1 wk before AOM and for 30 wks	Protective effects against colorectal cancer development [83]
	s.c. 15 mg/kg b.w. 1x/wk for 2 wks, at day 45 of rat's life	Soy isoflavones	p.o. (0, 40 100 mg/kg diet) from birth, including pregnancy and lactation, until 26 wks of life. AOM at day 45	Lifetime exposure suppressed colon tumors growth [84]
	s.c. 15 mg/kg b.w. 1x/wk for 2 wks	Probiotic bacteria " <i>bifidobacterium lactis</i> " (<i>B. lactis</i>) and carbohydrate "resistant starch" (from a commercial source called Hi-maize 958 or Hi-maize S260)	Diet supplemented (100 g/kg/diet of Hi-maize 958 or Hi-maize 260 and 1% lyophilized culture of <i>B. lactis</i>)	Protective effects by the combination of the two products [85]
	s.c. 15 mg/kg b.w. for three weekly doses	Xanthohumol (a polyphenol isolated from <i>Humulus lupulus</i> L.)	Gavage (5 mg/kg b.w.) every alternate day for 8 wks	Inhibited cell proliferation and induced apoptosis [86]
Wistar rats	i.p. 15 mg/kg	L-lysine, propolis, or gum arabic	Gavage water (150 mg/kg L-lysine, 100 mg/5 mL/kg propolis or 5 mL/kg gum arabic) daily for 16 wks	Gum arabic and propolis reduced the total number of aberrant crypt foci, L-lysine neither protected against nor enhanced colorectal cancer [87]

b.w.: body weight; d.w.: drinking water; i.p.: intraperitoneal injection; p.o.: per os; s.c.: subcutaneous injection; wk: week; wks: weeks.

Azoxymethane (AOM) and Dextran-Sodium Sulfate Model (DSS)

Because colon cancer is associated with long-standing IBD, such as ulcerative colitis and Crohn's disease, the risk of colorectal cancer development increases with the extent and duration of disease [19]. Chronic and repeated mucosal inflammation may result in tumors through several mechanisms, such as induction of genetic mutations, increased cryptal cell proliferation, changes in crypt cell metabolism, changes in bile acid, and alterations in the bacterial flora [5]. In 2003, Tanaka and colleagues developed a colitis-related mouse model of colorectal cancer initiated with AOM and promoted by dextran-sodium sulfate (DSS) [88]. DSS is an inflammatory compound that causes damages to the epithelial lining of the colon and induces colitis. Using this model, male Crj: Cd-1 (IRC) mice were intraperitoneally injected with AOM (10 mg/kg of body weight) and, one week later, received 2% of DSS in drinking water for seven days. Twenty weeks later, 88% of animals had colonic dysplasia, and the incidence of adenoma and adenocarcinoma was 100% [88]. This model allows the reduction in the number of AOM administrations, avoiding prolonged exposure to this compound, and still allows a reduction in the latency period. After this finding, other researchers have associated DSS with other compounds (PhIP and DMH), with tumor induction in a shorter period than the AOM/DSS model [19,89,90]. Concerning the AOM/DSS-induced model, different mice strains present diverse sensitivity; for example, the incidence and multiplicity of adenocarcinomas appear to be higher in the BALB/c mouse strain [91].

The AOM/DSS model mimetics human colorectal cancer pathogenesis, with a similar location (distal colon) and initiation by a polypoid growth. However, this model has a very low tendency to metastasize, which constitutes a limitation [92]. This model has been used in several chemopreventive studies of colitis-related colon carcinogenesis [88] (Table 5).

2-Amino-1-Methyl-6-Phenylimidazo (4,5-b) Pyridine (PhIP)

The PhIP is a heterocyclic amine isolated from cooked fish and meat, which can be used to induce tumors in the colon, prostate, and mammary gland [93]. After administration, it is rapidly absorbed by the gastrointestinal tract and widely distributed through the body [19]. Then it is bio-transformed by the liver cytochrome P450 s, being converted in the amino group to a hydroxyamino group, which is then activated by forming esters with acetic acid, sulfuric acid, and proline. These esters are responsible to induce carcinogenic DNA adducts and genetic alterations leading to colorectal cancer [94]. The work performed by Ito and colleagues was the first to induce colon tumors in rats with this compound [95]. F344 rats from both sexes were fed with 400 ppm PhIP for up to 52 weeks and presented a high incidence of colon carcinomas [95]. PhIP did not induce colon cancer in mice, it just induced the formation of colonic aberrant crypt foci and lymphomas [4,9]. The mechanisms responsible for the non-induction of cancer in mice are not well understood [94]. This model has been used to evaluate the therapeutic effects of several compounds on colorectal cancer. Detailed information concerning mouse and rat models' studies using PhIP induction can be consulted in Table 6.

Table 5. Colorectal cancer chemopreventive studies using the AOM/DSS model.

Animal Strain and Gender	Carcinogenic Administration Route	Drugs or Compounds Evaluated (Classification)	Dose/Treatment	Therapeutic Effects (Ref)
CF-1 male mice	s.c. AOM 10 mg/kg body wt + 1 wk later d.w. 1.2% DSS for 7 days	Aspirin (acetylsalicylic acid)	Diet supplemented (0.02% aspirin) 1 wk before AOM and for 20 wks	Suppressed inflammatory colitis symptoms and tumor multiplicity [96]
	i.p. AOM 10 mg/kg + 1 wk later d.w. 2% DSS for 1 wk	<i>Asther glehni</i> Franchet et Sckmidt (common Korean dietary edible herb)	p.o. (25 mg/kg/day) 1 wk after AOM + DSS and for 1 wk	Inhibited colitis-associated colon carcinogenesis [97]
C57BL/6 male mice	i.p. AOM 10 mg/kg b.w. + d.w. 2% DSS for 5 days	DA-6034 (7-Carboxymethyloxy-39,49,5-trimethoxyflavone) (synthetic derivative of flavonoid eupatilin)	Gavage (30 mg/kg) from day 7 to the end	Reduced the number of colon tumors [98]
	i.p. AOM 10 mg/kg b.w. + 5 days later d.w. 2.5% DSS followed by 14 days of normal water x 3 cycles	Pristimerin (a naturally triterpenoid)	i.p. (125 ng/kg) every 2 days for 80 days	Reduced the number and size of the tumors [99]
	i.p. AOM 10 mg/kg + 1 wk after d.w. 2% DSS for 1 wk	Chitooligosaccharides (oligomers that are depolymerized from chitosan)	i.g. (300 mg/kg) once a day and 6x/wk	Prevented colorectal cancer through regulating the gut microbiota and mycobiota [100]
C57BL/6 female mice	i.p. AOM 10 mg/kg + 1wk later d.w. 2% DSS for 1x/wk for 3 wks	Conjugated linoleic acid (CLA)	Diet supplemented (1% CLA) 3 wk before AOM + DSS and for 13 wks	Increased colorectal cancer [101]
	i.p. AOM 10 mg/kg b.w. + d.w. DSS 2.5% 1 wk after AOM for two cycle of 7 days	Licorice flavonoids (LFs) (Chinese herbal medicine)	Gavage (0, 50 or 100 mg/kg) once a day for 10 wks	Reduced tumorigenesis [102]
BALB/c female mice	i.p. AOM 10 mg/kg + 1 wk after d.w.DSS 2.5% 2.5% of 3 cycles of 1 wk	<i>Aloe vera</i> gel	p.o. (200 or 400 mg/kg/day) 1 wk before AOM and for 13 wks	Reduced the multiplicity of colorectal adenomas and adenocarcinomas [103]
BALB/c male mice	i.p. AOM 12.5 mg/kg + 1 wk after dDSS 2.5% in d.w. for 3 cycles of 5 days	<i>Triticum aestivum</i> sprouts ethanol extract (TAEE)	Gavage (100 or 200 mg/kg/day) for 40 days	Inhibited colon inflammation and neoplasm formation [104]
CD-1 (ICR) male mice	i.p. AOM 10 mg/kg b.w. + 1 wk after d.w. DSS 1.5% for 7 days	Zerumbone (tropical ginger sesquiterpene)	Diet supplemented (100, 250, or 500 ppm) for 17 wks	Zerumbone suppresses mouse colon carcinogenesis through mechanisms of growth, apoptosis, inflammation that are involved in carcinogenesis in the colon [105]
	i.p. AOM 10 mg/kg b.w. + 1 wk after d.w. DSS 1% for 7 days	Prenyloxycoumarins, auraptene and collinin nonsteroidal anti-inflammatory drugs)	Diet supplemented (0.01 and 0.05% of all compounds) 1 wk after DSS and for 17 wks	Chemopreventive activity [106]

Table 5. Cont.

Animal Strain and Gender	Carcinogenic Administration Route	Drugs or Compounds Evaluated (Classification)	Dose/Treatment	Therapeutic Effects (Ref)
	i.p. AOM 10 mg/kg b.w. + 1 wk after d.w. DSS 1% for 7 days	Ursodeoxycholic Acid (UDCA) and Sulfasalazine (anti-inflammatory agents)	Diet supplemented (0.016, 0.08 or 0.4% UDCA, 0.05% sulfasalazine or 0.5% UDCA + 0.05% sulfasalazine) 1 wk after DSS and for 20 wks	UDCA showed more suppressing effects on colorectal cancer [107]
	i.p. AOM 10 mg/kg b.w. + d.w. DSS 2.5% 1 wk after AOM and for 7 days	Dried açai berry powder	Diet supplemented (2.5 or 5%) for 14 wks	Reduced the incidence of colorectal cancer [108]
	i.p. AOM (10 mg/kg b.w.) + d.w. DSS 1.5% 1 wk after AOM and for 7 days	Fucoxanthin (a xanthophyll present in marine brown algae)	Gavage (6 or 30 mg/kg)	Reduced the number of colorectal polyps [109]
CD-1 (ICR) female mice	i.p. AOM 10 mg/kg b.w. + 1 wk after d.w. DSS 2% for 7 days	Nimesulide (a cyclooxygenase-2 inhibitor), troglitazone and bezafibrate (ligands for peroxisome proliferator-activated receptors)	Diet supplemented (0.04% nimesulide, 0.05% troglitazone and 0.05% bezafibrate) 1 wk after DSS and for 14 wk	Suppressed development of colorectal cancer [110]
129SvJxC57BL6 male and female mice	i.p. AOM 12.5 mg/kg + 5 days later d.w. DSS 2% for 5 days followed by a 2-wk rest period and again 5 days of DSS	Chalcone lonchocarpin isolated from <i>Lonchocarpus sericeus</i>	i.p. (2.5 mg/mL) 4 wks after the last DSS cycle and for 4 days	Reduced tumor proliferation [111]

b.w.: body weight; d.w.: drinking water; i.g.: intragastrically; i.p.: intraperitoneal injection; p.o.: per os; s.c.: subcutaneous injection; wk: week; wks: weeks.

Table 6. Studies using PhIP model to study several strategies for colorectal cancer.

Animal Strain and Gender	Carcinogenic Administration Route	Drugs or Compounds Evaluated (Classification)	Dose/Treatment	Therapeutic Effects (Ref)
F344 male rats	p.o. 200 ppm for the first 20 wks	Tomato + broccoli powder in AIN93G diet	control, PhIP alone, PhIP + diet with 10% of tomato and broccoli powder for 20 wks and without PhIP for 32 wks	A diet rich in tomato + broccoli can reduce or prevent dietary carcinogens-induced cancer. Tomato + broccoli group reduced incidence and/or severity of cancer lesions [112]
	Gavage 75 mL/kg b.w. 5 times a week for 2 wks	Yogurt powder (milk fermented by <i>Lactobacillus delbrueckii</i> subsp. <i>Bulgarius</i> strain 2038 and <i>Streptococcus salivarius</i> subsp. <i>thermophilus</i> strain 1131)	Diet supplemented (10.4646% yogurt powder) 14 days before PhIP and for 14 days	Yogurt appears to have tumor-suppressing properties [113]
	Gavage daily 100 mg/kg b.w. for 2 wks	White tea, green tea, epigallocatechin-3-gallate (EGCG) and caffeine	d.w. (2% white tea, 2% green tea, 0.5 mg/mL EGCG or 9.5 mg/mL caffeine) 1 wk after last PhIP and for 16 wks	Inhibition of tumor initiation mostly by white tea, caffeine and EGCG [114]
	i.g. 100 mg/kg 2x/wk for 10 wks	Nobiletin (5,6,7,8,3,4 -hexamethoxy flavone) (polymerthoxy-flavonoid extracted from citrus fruits)	Diet supplemented (0.05% nobiletin) for 50 wks	Chemopreventive activity of early carcinogenesis changes [115]
	Gavage 150 mg/kg for 5 alternate days	White tea	d.w. (2% wt/vol white tea) for 2 wks	Inhibition of preneoplastic lesion development [116]
	i.g. 200 mg/kg 2x/wk for 10 wks)	Fujiflavone (a commercial isoflavone supplement)	Diet supplemented (0.25% fujiflavone) for 50 wks	Preventive effects on colorectal cancer [117]
F344 female rats	Gavage 50 mg/kg b.w.	Clorophyllin (CHL) indole-3-carbinol (I3C)	p.o. (0.1% I3C and 0.1% CHL), before and during PhIP exposure or 1 wk after PhIP and for 16 wks	Protective effects for CHL and I3C on colorectal carcinogenesis [118]
	Diet supplemented 0.02%	caffeine, α -tocopherol (lipophilic antioxidant), and n-tritriacontane-16,18-dione (TTAD) (β -diketone derivative)	p.o. (0.1% caffeine, 0.5% α -tocopherol or 0.1% TTAD) for 54 wks	Increase the incidence of colorectal tumors by caffeine; α -tocopherol and TTAD had no effect on colorectal tumors [119]
Sprague-Dawley male rats	Gavage 10 mg/kg b.w.	Chinese cabbage (<i>Brassica chinensis</i>)	p.o. (20% freeze-dried cabbage powder) 10 days before PhIP and for 20 h	Preventive effect on initiated colorectal tumors [120]

b.w.: body weight; d.w.: drinking water; h: hours; i.g.: intragastrically; p.o.: per os; wk: week; wks: weeks.

3.3. Genetically Engineered Models

Genetically engineered models allow the study of genetic predisposition to colorectal cancer development, and its interaction with environmental and modifying factors. These models mimic the genetic alterations of spontaneous and hereditary forms of colorectal cancer [9]. Through the study of hereditary colorectal syndromes, such as FAP and HNPCC, it was possible to discover the mutations under colonic carcinogenesis and replicate genetic lesions in mice and rats by developing genetically engineered models [9].

3.3.1. Adenomatous Polyposis Mouse Models (APC)

It was demonstrated that human colorectal cancer is a multi-step genetic process and that the mutation of the APC gene occurs at the beginning of the carcinogenesis process. The APC gene is responsible for the regulation of β -catenin, cytoskeleton organization, cell cycle regulation, apoptosis, and cell adhesion. When mutated in the germline, this gene is associated with FAP [5,121].

Moser and colleagues discovered that C57BL/6 mice treated with ethylnitrosourea developed a mutation that predisposes to spontaneous development of intestinal cancer, naming the model as ApcMin mouse [122]. The Min mouse model is the only animal model of cancer that contains a single genetic alteration capable of producing a fully penetrating, consistent, and organ-specific tumor phenotype. The adenomas developed rapidly, with lesions identified within 60 days, and high tumor multiplicity. This model allows the study of multiple pathways impacting tumorigenesis and enables numerous entry points for basic or applied studies [10]. Over the years, this model has been tested, improved, characterized, and used to understand the role of the APC gene in colorectal cancer and also in chemopreventive studies [14] (Table 7).

Other mouse models with target genetic modifications at different locations on the APC gene have been generated, such as ApcMin/850, Apc Δ 716, Apc1638N, Apc1638T, Apc Δ 468, and Apc Δ 474 [10], that allow the study of the colorectal cancer mechanisms, create models more similar to those changes found in humans, and test the role of specific regions in the APC gene on cancer development [9,10].

Table 7. Studies using the APC^{Min/+} model to evaluate the effect of several compounds in colorectal cancer.

Animal Strain/Gender	Drugs or Compounds Evaluated (Classification)	Dose/Treatment	Therapeutic Effects (Ref)
Min mice/n.d.	α -phenyl-tert-butyl nitron (PBN) and 4-hydroxyl-PBN (4-O-PBN) (nitrones)	d.w. (100 ng/kg/day PBN or 4-O-PBN) for 3–4 months	Anti-cancer activity of PBN more significant than 4-O-PBN [123]
	Bilberry (<i>Vaccinium myrtillus</i>), lingonberry (<i>Vaccinium vitis-idaea</i>), cloudberry (<i>Rubus chamaemorus</i>), cloudberry seeds or cloudberry pulp, or pure ellagic acid	p.o. (1564 mg/kg of each) for 10 wks.	Chemopreventive potential [124]
	Atorvastatin (hydroxy-3- methylglutaryl CoA reductase (HMGR) inhibitor) and celecoxib (cyclooxygenase-2 (COX-2) inhibitors)	p.o. (0 or 100 ppm atorvastatin or 300 celecoxib alone or in combination) for 80 days	Inhibited intestinal tumorigenesis by atorvastatin and increased chemopreventive activity in combination with celecoxib [125]
	Piroxicam (a non-steroidal anti-inflammatory drug)	p.o. (200 ppm piroxicam) for 100 or 200 days of rat age	Reduced tumor multiplicity [126]
	Annurca Apple polyphenol extract	d.w. (60 μ mol/L) in combination with a western diet or balanced diet for 12 wks	Chemopreventive potential [127]
	Fermented brown rice and rice bran (FBRA)	Exp.1: diet supplemented (5 or 10% FBRA) for 20 wks; Exp2: diet supplemented (5 or 10% FBRA and 2% DSS in d.w. for 1 wk) for 12 wks; Exp3: diet supplemented (10% FBRA and 1.5% DSS in d.w. for 1 wk) for 7 wks	No effect on tumor development by FBRA alone but in combination with DSS suppressed the multiplicity of colon tumors [128]
	Sulforaphane (SFN) (isothiocyanate)	Diet supplemented (600 ppm SFN) for 1, 3, or 5 days	Chemopreventive potential [129]
	Bilirubin, bovine serum albumin (BSA) and sodium taurocholate (NaTC)	p.o (0.5 mM BSA alone or in combination with 0.25 mM bilirubin or 5 mM NaTC) for 8 wks	Reduced intestinal adenomas by NaTC [130]
	Metformin (biguanide derivative)	p.o. (250 mg/kg/day) for 10 wks	Chemopreventive potential [131]
	Silibinin	Gavage (750 mg/kg b.w.) for 5 days a wk for 13 wks	Chemopreventive potential [132]
Min mice/female and male	Aspirin	Diet supplemented (250 or 500 ppm) for 7 wks	Chemopreventive potential [133]
	Curcumin	Diet supplemented (2% curcumin) from 4 to 18 wks of age	Chemopreventive potential [134]
	Anthocyanin-rich tart cherry extract and sulindac (a nonsteroidal anti-inflammatory drug)	p.o. (0, 375, 750, 1500 or 3000 mg anthocyanin-rich tar cherry extract/kg if diet with 100 mg sulindac/kg diet) for 19 wks	The combination of both compounds had a more protective effect than compounds alone [135]
	Physical activity	t.r. (18 m/min, 60 min/day, 6 days/wk or voluntary wheel running) for 9 wks	Reduced number and size of intestinal polyps, dependent on exercise mode and gender [136]
	DMU-135 (3,4-Methylenedioxy-3,4,5 -trimethoxy chalcone) (anticancer prodrug)	Diet supplemented (0.2% w:w) from 4–18 wks	Chemopreventive activity [137]
	MCC-555 (peroxisome proliferator-activated receptor (PPAR) ligand)	Gavage (30 mg/kg/day 5 days/wk) for 4 wks	Suppressed activity [138]
	Soy isoflavones	Diet supplemented (low-isoflavone: 11.5 genistein, 2.3 daidzein and 2.3 mg of glycitein/kg diet, rich isoflavone diet: 280.6 genistein, 147.2 daidzein and 48.3 mg of glycitein/kg diet) for 107 days	No inhibition of colorectal tumor development [139]

Table 7. Cont.

Animal Strain/Gender	Drugs or Compounds Evaluated (Classification)	Dose/Treatment	Therapeutic Effects (Ref)
Min mice/male	Orange peel extract (OPE)	Diet supplemented (0.25 or 0.5% OPE) for 9 wks	Inhibited colorectal tumorigenesis [140]
	Physical activity	t.r.(18 m/min, 60 min, 6 days/wk, 5% grade) for 9 wks	Reduced the overall tumor burden (size and number) [141]
	Guanidinoethylsulfide (GED) [14–17], peroxynitrite decomposition catalyst, FP 15 and poly(ADPribose) synthetase (PARP) inhibitor, N-(6-oxo-5,6-dihydrophenanthridin- 2-yl)-N, N-dimethylacetamide hydrochloride (PJ 34) (specific inhibitors of inducible nitric oxide synthase)	Gavage (10 or 30 mg/kg/day GED, 1 or 3 mg/kg/day FP15 and 3 or 10 mg/kg/day PJ34) twice a day from 5 wks of age until 12 wks	Chemopreventive activity of all compounds [142]
Min mice/female	(-)-epigallocatechin-3-gallate (EGCG) and fish oil	Diet supplemented (0.16% EGCG alone or in combination with high-fat fish oil diet, 20% w:w) for 9 wks	Inhibited tumor multiplicity by a combination of low doses of EGCG and fish oil [143]
Apc1638N mice/male and female	Aspirin and α -amylase resistant starch (RS)	Diet supplemented (125 g/kg diet RS or 0.3 g/kg aspirin alone or in combination) from 6 wks	The combination of two compounds showed more preventive activity than compounds alone [144]

d.w.: drinking water; n.d.: no data; p.o.: per os; t.r.: treadmill running; wk: week; wks: weeks.

3.3.2. F344-Pirc Rat Model

In 2007, Landgraf and colleagues developed a rat model carrying a knockout allele in the APC gene on an inbred F344/NTac genetic background rat [145]. To distinguish it from the APC mouse, they called this strain Pirc form (polyposis in the rat colon). The Pirc rats developed adenomas similar to those found in humans, showed the same progression to invasive carcinomas, and dependence on gender was observed, with males more prone to develop tumors in the intestinal tract than female rats [145]. In comparison to APC mouse models, this model takes some advantages due to the rat's size, the facility of diagnostic imaging, colonic predisposition, and longevity [10].

3.3.3. Hereditary Nonpolyposis Colon Cancer Mouse Models (HNPCC)

HNPCC is an inherited disease characterized by inactivated DNA mismatch repair genes, such as MLH1, MSH2, MSH6, and PMS2, that leads to the development of a variety of cancers, including colorectal cancer [15]. Mice with a targeted inactivating mutation in the mismatch repair genes are used to study these genes and evaluate their contribution to carcinogenesis [14,146]. Developed tumors are not specific to the colon-rectum; they occur in other organs such as the skin, lung, lymphatic system, stomach, and small intestine [15].

3.4. Xenograft and Syngeneic Models

Colorectal cancer cells or grafts of tissue can be implanted into animals to evaluate tumor development and to analyze the effects of several chemicals and natural compounds (Figure 5).

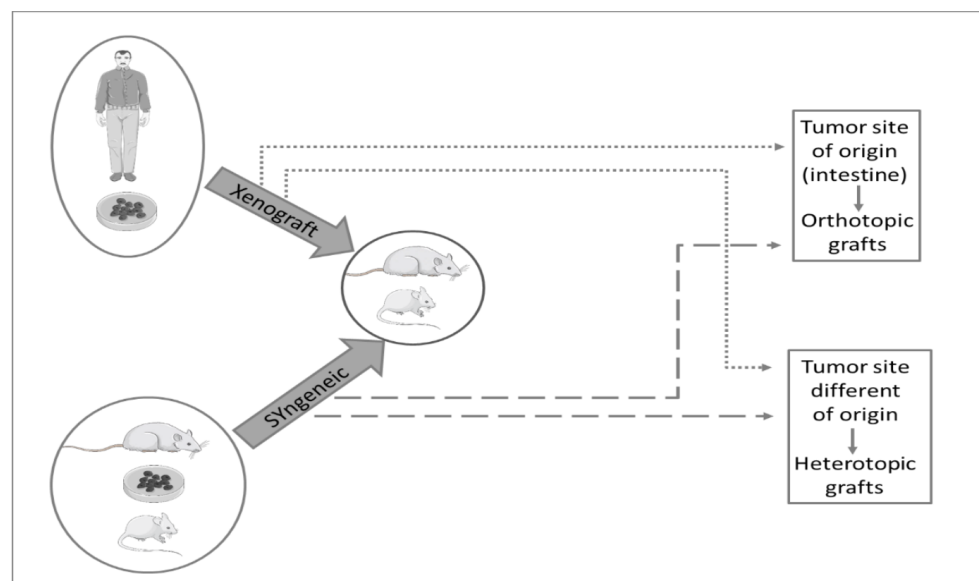


Figure 5. Schematic representation of xenograft and syngeneic models. In both models, the cells may be implanted in tumor site origin (orthotopic grafts) or a site different from tumor origin (heterotopic grafts).

In xenograft models, human tumor cells or tumor fragments are implanted into immunocompromised animals. Syngeneic tumor models are characterized by the use of animal tumor cell lines obtained from chemically induced rodent colorectal cancer and are implanted into animals with the same genetic background as the cell line [13]. These models can be used, among others, to study the effects of treatment on colorectal cancer metastases [4,147,148].

The cells may be implanted subcutaneously, intrasplenically into the renal capsule (heterotopic models), or directly in the colon or rectum (orthotopic models) [13,14]. The subcutaneous inoculation (heterotopic model) is one of the most used methods due to the simplicity, easy access, and high tumor growth [4]; however, the tumor microenvironment is

different from the colon [13], and the metastases do not develop [149]. Comparing with the subcutaneous heterotopic model, the intrasplenically and renal capsule heterotopic models and the orthotopic model are technically more advanced and more difficult to work with, requiring the animals' anesthesia and use of imaging modalities (e.g., ultrasonography) to implant the cells specifically in the spleen, the renal capsule or colon, respectively [150].

Orthotopic implantation refers to cells or tumor fragments implanted in the tumor site of origin, i.e., colon or rectum [13]. These models allow replication of tumor invasion, vascular spread, mimic the progression to advanced colorectal cancer in humans, and metastasize to distal organs [12]. For example, MCA-38 cells were intramurally injected into the cecum of C5BL/6J mice, and 40–65% of them developed metastases eight weeks later [151]. In another study, CT26 cells were transanal rectal injected in Balb/c mice with uptake rates of 65%, but only 3.3% developed metastases [152].

These models can be used to evaluate some therapeutic drugs. For example, Tao and colleagues used a commercial human colon cancer cell line, HCT-116, to evaluate the anti-colorectal cancer activity of Weichang'an, a Chinese herbal medicine, with 5-fluorouracil. The cells were injected subcutaneously in male BALB/C mice axilla, and after tumor growth, they were transplanted into the cecum. The group concluded that the compounds evaluated inhibited both colon tumor growth and hepatic metastases [153].

4. Conclusions

Experimental data concerning dietary, drugs, and natural compounds' effects on colon cancer models were reviewed in this work. Although several animal models are available to study colon cancer, there is no perfect model; all constitute an important tool to study human and animal colon carcinogenesis and to evaluate the potential effects of preventive and therapeutic strategies.

Whereas the AOM/DSS model mimetics the pathogenesis observed in human colorectal cancer, others like genetically engineered models allow studying genetic predisposition to the development of this type of cancer. The model selection should consider the studies' goals, the costs, and the advantages and disadvantages of each model, animal, strain, and gender.

Considering dietary patterns and natural products used as chemoprevention or chemotherapy, some like soy isoflavones, β -carotene, dried plums, fuji flavone, and Chinese cabbage showed an inhibitory effect on colorectal carcinogenesis, and adlay bran ethanol extract, grape seed extract, and pomegranate peel extract decreased the development of colonic premalignant lesions. However, groups that studied the effects of wheat bran and heme groups (in form of chicken, beef, black pudding) in the mice diet have concluded the opposite, observing a higher incidence of colorectal carcinogenesis.

In some cases, natural compounds, several drugs, and dietary patterns results are inconsistent and depend on multiple factors, and the best way to obtain better results is to select the most appropriate model and try to reduce most of the external factors. To achieve this goal, more research with controlled parameters is warranted. Moreover, ideally, the studies to evaluate the effects of natural compounds in CRC should not only evaluate the whole compound, but also each active substance in an isolated way. However, these studies imply the use of a higher number of animals, and consequently, higher costs for researchers, which may constitute a limitation.

Author Contributions: Writing—original draft preparation, E.N.-G., B.A.L.M., R.S.-R.; writing—review and editing, A.I.F.-R., A.G., P.A.O.; supervision, P.A.O. All authors have read and agreed to the published version of the manuscript.

Funding: This work was supported by National Funds by FCT—Portuguese Foundation for Science and Technology, under the projects UIDB/04033/2020 and UIDB/CVT/00772/2020, and post-graduation grant SFRH/BD/136747/2018.

Institutional Review Board Statement: Not applicable.

Informed Consent Statement: Not applicable.

Data Availability Statement: Data sharing not applicable.

Conflicts of Interest: The authors declare no conflict of interest.

References

1. Bray, F.; Ferlay, J.; Soerjomataram, I.; Siegel, R.; Torre, L.; Jemal, A. Global Cancer Statistics 2018: GLOBOCAN Estimates of Incidence and Mortality Worldwide for 36 Cancers in 185 Countries. *CA Cancer J. Clin.* **2018**, *68*, 1–31. [[CrossRef](#)] [[PubMed](#)]
2. *Diet, Nutrition, Physical Activity and Colorectal Cancer*; World Cancer Research Fund: London, UK; American Institute for Cancer Research: Washington, DC, USA, 2018.
3. Thanikachalam, K.; Khan, G. Colorectal Cancer and Nutrition. *Nutrients* **2019**, *11*, 164. [[CrossRef](#)] [[PubMed](#)]
4. Kobaek-Larsen, M.; Thorup, I.; Diederichsen, A.; Fenger, C.; Hoitinga, M.R. Review of Colorectal Cancer and Its Metastases in Rodent Models: Comparative Aspects with Those in Humans. *Comp. Med.* **2000**, *50*, 16–26. [[PubMed](#)]
5. Tanaka, T. Colorectal Carcinogenesis: Review of Human and Experimental Animal Studies. *J. Carcinog.* **2009**, *8*, 5. [[CrossRef](#)]
6. Machado, V.F.; Feitosa, M.R.; da Rocha, J.J.R.; Féres, O. A Review of Experimental Models in Colorectal Carcinogenesis. *J. Coloproctology* **2016**, *36*, 53–57. [[CrossRef](#)]
7. Raskov, H.; Pommergaard, H.-C.; Burcharth, J.; Rosenberg, J. Colorectal Carcinogenesis—Update and Perspectives. *World J. Gastroenterol.* **2014**, *20*, 18151. [[CrossRef](#)]
8. Fagundes, D.J.; Taha, M.O. Modelo Animal de Doença: Critérios de Escolha e Espécies de Animais de Uso Corrente. *Acta Cirúrgica Bras.* **2004**, *19*, 59–65. [[CrossRef](#)]
9. Johnson, R.L.; Fleet, J.C. Animal Models of Colorectal Cancer. *Cancer Metastasis Rev.* **2013**, *32*, 39–61. [[CrossRef](#)]
10. Kwong, L.N.; Dove, W.F. APC and Its Modifiers in Colon Cancer. In *APC Proteins*; Näthke, I.S., McCartney, B.M., Eds.; Springer: New York, NY, 2009; Volume 656, pp. 85–106. ISBN 978-1-4419-1144-5.
11. Oliveira, R.C.; Abrantes, A.M.; Tralhão, J.G.; Botelho, M.F. The role of mouse models in colorectal cancer research—The need and the importance of the orthotopic models. *Anim. Model Exp. Med.* **2020**, *3*, 1–8. [[CrossRef](#)]
12. Treuting, P.M.; Dintzis, S.M.; Montine, K.S. *Comparative Anatomy and Histology: A Mouse, Rat, and Human Atlas*; Academic Press: Cambridge, MA, USA, 2017; ISBN 978-0-12-802919-0.
13. Vdoviaková, K.; Petrovova, E.; Maloveska, M.; Krešáková, L.; Teleky, J.; Elias, M.; Petrášová, D. Surgical Anatomy of the Gastrointestinal Tract and Its Vasculature in the Laboratory Rat. *Gastroenterol. Res. Pract.* **2016**, *2016*, 2632368. [[CrossRef](#)]
14. Evans, J.P.; Sutton, P.A.; Winiarski, B.K.; Fenwick, S.W.; Malik, H.Z.; Vimalachandran, D.; Tweedle, E.M.; Costello, E.; Palmer, D.H.; Park, B.K.; et al. From Mice to Men: Murine Models of Colorectal Cancer for Use in Translational Research. *Crit. Rev. Oncol. Hematol.* **2016**, *98*, 94–105. [[CrossRef](#)]
15. Suman, S.; Datta, K. Animal Models of Colorectal Cancer in Chemoprevention and Therapeutics Development. In *Colorectal Cancer: From Prevention to Patient Care*; Intech Open: London, UK, 2012; pp. 277–300. [[CrossRef](#)]
16. Newmark, H.; Yang, K.; Kurihara, N.; Fan, K.; Augenlicht, L. Western-Style Diet-Induced Colonic Tumors and Their Modulation by Calcium and Vitamin D in C57Bl/6 Mice: A Preclinical Model for Human Sporadic Colon Cancer. *Carcinogenesis* **2008**, *30*, 88–92. [[CrossRef](#)]
17. Miyamoto, M.; Tani, Y. A Study on Colon Cancer-Prone Rats of WF-Osaka Strain. *Med. J. Osaka Univ.* **1989**, *38*, 1–12.
18. Lorenz, E.; Stewart, H.L. Intestinal Carcinoma and Other Lesions in Mice Following Oral Administration of 1, 2, 5, 6-Dibenzanthracene and 20-Methylcholanthrene. *J. Natl. Cancer Inst.* **1940**, *1*, 17–40.
19. Rosenberg, D.W.; Giardina, C.; Tanaka, T. Mouse Models for the Study of Colon Carcinogenesis. *Carcinogenesis* **2009**, *30*, 183–196. [[CrossRef](#)]
20. Greene, F.L.; Lamb, L.S.; Barwick, M. Colorectal Cancer in Animal Models—A Review. *J. Surg. Res.* **1987**, *43*, 476–487. [[CrossRef](#)]
21. Reddy, B.S. Colon Carcinogenesis Models for Chemoprevention Studies. *Cancer Chemoprev.* **1998**, *12*, 963–973. [[CrossRef](#)]
22. Walpole, A.L.; Williams, M.H.C.; Roberts, D.C. The Carcinogenic Action of 4-Aminodiphenyl and 3,2'-Dimethyl-4-Amino-Diphenyl. *Br. J. Ind. Med.* **1952**, *9*, 255–263.
23. Reddy, B.S.; Mori, H. Effect of Dietary Wheat Bran and Dehydrated Citrus Fiber on 3,2'-Dimethyl-4-Aminobiphenyl-Induced Intestinal Carcinogenesis in F344 Rats. *Carcinogenesis* **1981**, *2*, 21–25. [[CrossRef](#)]
24. Davis, C.D.; Feng, Y. Dietary Copper, Manganese and Iron Affect the Formation of Aberrant Crypts in Colon of Rats Administered 3,2'-Dimethyl-4-Aminobiphenyl. *J. Nutri.* **1999**, *129*, 1060–1067. [[CrossRef](#)]
25. Feng, Y.; Finley, J.W.; Davis, C.D.; Becker, W.K.; Fretland, A.J.; Hein, D.W. Dietary Selenium Reduces the Formation of Aberrant Crypts in Rats Administered 3,2'-Dimethyl-4-Aminobiphenyl. *Toxicol. Appl. Pharmacol.* **1999**, *157*, 36–42. [[CrossRef](#)]
26. Ravoori, S.; Feng, Y.; Neale, J.R.; Jeyabalan, J.; Hein, D.W.; Gupta, R.C. Dose-Dependent Reduction of 3,2'-Dimethyl-4-Aminobiphenyl-Derived DNA Adducts in Colon and Liver of Rats Administered Celecoxib. *Mutat. Res.* **2008**, *638*, 103–109. [[CrossRef](#)]
27. Williams, G.M.; Iatropoulos, M.J.; Jeffrey, A.M.; Shirai, T. Protective Effect of Acetaminophen against Colon Cancer Initiation Effects of 3,2'-Dimethyl-4-Aminobiphenyl in Rats. *Eur. J. Cancer Prev.* **2002**, *11*, 39–48. [[CrossRef](#)]
28. Narisawa, T.; Weisburger, J.H. Colon Cancer Induction in Mice by Intrarectal Instillation of N-Methylnitrosourea (38498). *Proc. Soc. Exp. Biol. Med.* **1075**, *148*, 166–169. [[CrossRef](#)]
29. Narisawa, T.; Fukaura, Y.; Takeba, N.; Nakai, K. Chemoprevention of N-Methylnitrosourea-Induced Colon Carcinogenesis by Ursodeoxycholic Acid-5-Aminosalicic Acid Conjugate in F344 Rats. *Jpn. J. Cancer Res.* **2002**, *93*, 143–150. [[CrossRef](#)]

30. Wang, Y.; Jin, H.-Y.; Fang, M.-Z.; Wang, X.-F.; Chen, H.; Huang, S.-L.; Kong, D.-S.; Li, M.; Zhang, X.; Sun, Y.; et al. Epigallocatechin Gallate Inhibits Dimethylhydrazine-Induced Colorectal Cancer in Rats. *World J. Gastroenterol.* **2020**, *26*, 2064–2081. [[CrossRef](#)]
31. Nakayama, Y.; Inoue, Y.; Minagawa, N.; Onitsuka, K.; Nagata, J.; Shibao, K.; Hirata, K.; Sako, T.; Nagata, N.; Yamaguchi, K. Chemopreventive Effect of 4-[3,5-Bis(Trimethylsilyl) Benzamido] Benzoic Acid (TAC-101) on MNU-Induced Colon Carcinogenesis in a Rat Model. *Anticancer Res.* **2009**, *29*, 2059–2065.
32. McSherry, C.K.; Cohen, B.I.; Bokkenheuser, V.D.; Mosbach, E.H.; Winter, J.; Matoba, N.; Scholes, J. Effects of Calcium and Bile Acid Feeding on Colon Tumors in the Rat. *Cancer Res.* **1989**, *49*, 6039–6043.
33. Hawks, A.; Magee, P.N. The Alkylation of Nucleic Acids of Rat and Mouse in Vivo by the Carcinogen 1,2-Dimethylhydrazine. *Br. J. Cancer* **1974**, *30*, 440–447. [[CrossRef](#)]
34. Druckrey, H.; Preussmann, R.; Matzkies, F.; Ivankovic, S. Selektive Erzeugung von Darmkrebs bei Ratten durch 1,2-Dimethylhydrazin. *Naturwissenschaften* **1967**, *54*, 285–286. [[CrossRef](#)]
35. Thorup, I.; Meyer, O.; Kristiansen, E. Effect of a Dietary Fiber (Beet Fiber) on Dimethylhydrazine-Induced Colon Cancer in Wistar Rats. *Nutr. Cancer* **1992**, *17*, 251–261. [[CrossRef](#)] [[PubMed](#)]
36. Markert, C.; Rogers, L.W.; Chiu, J.-F. Induction of Colonic Adenocarcinomas by 1, 2-Dimethylhydrazine Intrarectally Administered in Rats. *Digestion* **1978**, *18*, 261–265. [[CrossRef](#)] [[PubMed](#)]
37. Bissahoyo, A.; Pearsall, R.S.; Hanlon, K.; Amann, V.; Hicks, D.; Godfrey, V.L.; Threadgill, D.W. Azoxymethane Is a Genetic Background-Dependent Colorectal Tumor Initiator and Promoter in Mice: Effects of Dose, Route, and Diet. *Toxicol. Sci.* **2005**, *88*, 340–345. [[CrossRef](#)] [[PubMed](#)]
38. Reddy, B.S. Studies with the Azoxymethane-Rat Preclinical Model for Assessing Colon Tumor Development and Chemoprevention. *Environ. Mol. Mutagenesis* **2004**, *44*, 26–35. [[CrossRef](#)]
39. Sohn, O.S.; Fiala, E.S.; Puz, C.; Hamilton, S.R.; Williams, G.M. Enhancement of Rat Liver Microsomal Metabolism of Azoxymethane to Methylazoxymethanol by Chronic Ethanol Administration: Similarity to the Microsomal Metabolism of N-Nitrosodimethylamine. *Cancer Res.* **1987**, *47*, 3123–3129.
40. Derry, M.; Raina, K.; Agarwal, R.; Agarwal, C. Characterization of Azoxymethane-Induced Colon Tumor Metastasis to Lung in a Mouse Model Relevant to Human Sporadic Colorectal Cancer and Evaluation of Grape Seed Extract Efficacy. *Exp. Toxic Pathol.* **2014**, *66*, 2166–2171. [[CrossRef](#)]
41. Gois, E.; Daniel, R.; Parra, R.; Almeida, A.; Rocha, J.; Garcia, S.; Féres, O. Hyperbaric Oxygen Therapy Reduces COX-2 Expression in a Dimethylhydrazine-Induced Rat Model of Colorectal Carcinogenesis. *Undersea Hyperb. Med.* **2012**, *39*, 693–698.
42. Prabhu, P.N.; Ashokkumar, P.; Sudhandiran, G. Antioxidative and Antiproliferative Effects of Astaxanthin during the Initiation Stages of 1,2-Dimethyl Hydrazine-Induced Experimental Colon Carcinogenesis. *Fundam. Clin. Pharmacol.* **2009**, *23*, 225–234. [[CrossRef](#)]
43. Davis, A.E.; Patterson, F. Aspirin Reduces the Incidence of Colonic Carcinoma in the Dimethylhydrazine Rat Animal Model. *Aust. N. Z. J. Med.* **1994**, *24*, 301–303. [[CrossRef](#)]
44. Silva, M.F.; Sivieri, K.; Rossi, E.A. Effects of a Probiotic Soy Product and Physical Exercise on Formation of Pre-Neoplastic Lesions in Rat Colons in a Short-Term Model of Carcinogenic. *J. Int. Soc. Sports Nutr.* **2009**, *6*, 17. [[CrossRef](#)]
45. Miliaras, S.; Miliaras, D.; Vrettou, E.; Zavitsanakis, A.; Kiskinis, D. The Effect of Aspirin and High Fibre Diet on Colorectal Carcinoma: A Comparative Experimental Study. *Tech. Coloproctology* **2004**, *8*, s59–s61. [[CrossRef](#)]
46. Jisha, N.; Vysakh, A.; Vijeesh, V.; Anand, P.S.; Latha, M.S. Methanolic Extract of Muntingia Calabura L. Mitigates 1,2-Dimethyl Hydrazine Induced Colon Carcinogenesis in Wistar Rats. *Nutr. Cancer* **2020**, 1–13. [[CrossRef](#)]
47. Ranhotra, G.S.; Gelroth, J.A.; Glaser, B.K.; Schoening, P.; Brown, S.E. Cellulose and Calcium Lower the Incidence of Chemically-Induced Colon Tumors in Rats. *Plant Foods Hum. Nutr.* **1999**, *54*, 295–303. [[CrossRef](#)]
48. Chung, C.-P.; Hsu, H.-Y.; Huang, D.-W.; Hsu, H.-H.; Lin, J.-T.; Shih, C.-K.; Chiang, W. Ethyl Acetate Fraction of Adlay Bran Ethanolic Extract Inhibits Oncogene Expression and Suppresses DMH-Induced Preneoplastic Lesions of the Colon in F344 Rats through an Anti-Inflammatory Pathway. *J. Agric. Food Chem.* **2010**, *58*, 7616–7623. [[CrossRef](#)]
49. Pence, B.C.; Buddingh, F. Inhibition of Dietary Fat-Promoted Colon Carcinogenesis in Rats by Supplemental Calcium or Vitamin D₃. *Carcinogenesis* **1988**, *9*, 187–190. [[CrossRef](#)]
50. Femia, A.P.; Salvadori, M.; Broekaert, W.F.; François, I.E.J.A.; Delcour, J.A.; Courtin, C.M.; Caderni, G. Arabinosylan-Oligosaccharides (AXOS) Reduce Preneoplastic Lesions in the Colon of Rats Treated with 1,2-Dimethylhydrazine (DMH). *Eur. J. Nutr.* **2010**, *49*, 127–132. [[CrossRef](#)]
51. Craven, P.A.; DeRubertis, F.R. Effects of Aspirin on 1, 2-Dimethylhydrazine-Induced Colonic Carcinogenesis. *Carcinogenesis* **1992**, *13*, 541–546. [[CrossRef](#)]
52. Kaur Saini, M.; Nath Sanyal, S. Evaluation of Chemopreventive Response of Two Cyclooxygenase-2 Inhibitors, Etoricoxib and Diclofenac in Rat Colon Cancer Using FTIR and NMR Spectroscopic Techniques. *Nutr. Hosp.* **2010**, *25*, 577–585.
53. Min, W.-K.; Sung, H.-Y.; Choi, Y.-S. Suppression of Colonic Aberrant Crypt Foci by Soy Isoflavones Is Dose-Independent in Dimethylhydrazine-Treated Rats. *J. Med. Food* **2010**, *13*, 495–502. [[CrossRef](#)]
54. Yamamoto, I.; Maruyama, H.; Moriguchi, M. Effect of P-Carotene, Sodium Ascorbate and Cellulose on 1,2-Dimethylhydrazine-Induced Intestinal Carcinogenesis in Rats. *Cancer Lett.* **1994**, *86*, 5–9. [[CrossRef](#)]
55. Jacobs, L.R. Enhancement of Rat Colon Carcinogenesis by Wheat Bran Consumption during the Stage of 1,2-Dimethylhydrazine Administration. *Cancer Res.* **1983**, *43*, 6.

56. Nelson, R.L.; Tanure, J.C.; Andrianopoulos, G. The Effect of Dietary Milk and Calcium on Experimental Colorectal Carcinogenesis. *Dis. Colon Rectum* **1987**, *30*, 947–949. [[CrossRef](#)]
57. Viñas-Salas, J.; Biendicho-Palau, P.; Piñol-Felis, C.; Miguelsanz-Garcia, S.; Perez-Holanda, S. Calcium Inhibits Colon Carcinogenesis in an Experimental Model in the Rat. *Eur. J. Cancer* **1998**, *34*, 1941–1945. [[CrossRef](#)]
58. Earnest, L.; Wall, K.; Jolley, S.; Bhattacharyya, K. Chemoprevention of Azoxymethane-Induced Colonic Carcinogenesis by Supplemental Dietary Ursodeoxycholic Acid. *Cancer Res.* **1994**, *54*, 5071–5074.
59. Reddy, B.S.; Hirose, Y.; Lubet, R.; Steele, V.; Kelloff, G.; Paulson, S.; Seibert, K.; Rao, C.V. Chemoprevention of Colon Cancer by Specific Cyclooxygenase-2 Inhibitor, Celecoxib, Administered during Different Stages of Carcinogenesis. *Cancer Res.* **2000**, *60*, 293–297.
60. Rao, C.V.; Indranie, C.; Simi, B.; Manning, P.T.; Connor, J.R.; Reddy, B.S. Chemopreventive Properties of a Selective Inducible Nitric Oxide Synthase Inhibitor in Colon Carcinogenesis, Administered Alone or in Combination with Celecoxib, a Selective Cyclooxygenase-2 Inhibitor. *Cancer Res.* **2002**, *62*, 165–170.
61. Kawamori, T.; Tanaka, T.; HarÅ, A.; Yamahara, J.; Mori, H. Modifying Effects of Naturally Occurring Products on the Development of Colonie Aberrant Crypt Foci Induced by Azoxymethane in F344 Rats. *Cancer Res.* **1995**, *55*, 1277–1282.
62. Reddy, B.S.; Nayini, J.; Tokumo, K.; Rigotty, J.; Zang, E.; Kelloff, G. Chemoprevention of Colon Carcinogenesis by Concurrent Administration of Piroxicam, a Nonsteroidal Antiinflammatory Drug with d,l- α -Difluoromethylornithine, an Ornithine Decarboxylase Inhibitor, in Diet. *Cancer Res.* **1990**, *50*, 2562–2568.
63. Chinthalapally, R.; Desai, D.; Rivenson, A.; Simi, B.; Amin, S.; Reddy, B. Chemoprevention of Colon Carcinogenesis by Phenylethyl-3-Methylcaffeate1. *Cancer Res.* **1995**, *55*, 2310–2315.
64. Kawamori, T.; Rao, V.; Seibert, K.; Reddy, B.S. Chemopreventive Activity of Celecoxib, a Specific Cyclooxygenase-2 Inhibitor, against Colon Carcinogenesis. *Cancer Res.* **1998**, *58*, 409–412.
65. Reddy, B.S. Chemopreventive Effect of S-Methylmethane Thiosulfonate and Sulindac Administered Together during the Promotion/Progression Stages of Colon Carcinogenesis. *Carcinogenesis* **1999**, *20*, 1645–1648. [[CrossRef](#)] [[PubMed](#)]
66. Steele, V.E.; Rao, C.V.; Zhang, Y.; Patlolla, J.; Boring, D.; Kopelovich, L.; Juliana, M.M.; Grubbs, C.J.; Lubet, R.A. Chemopreventive Efficacy of Naproxen and Nitric Oxide-Naproxen in Rodent Models of Colon, Urinary Bladder, and Mammary Cancers. *Cancer Prev. Res.* **2009**, *2*, 951–956. [[CrossRef](#)]
67. Kim, K.P.; Whitehead, C.; Piazza, G.; Wargovich, M.J. Combinatorial Chemoprevention: Efficacy of Lovostatin and Exisulind on the Formation and Progression of Aberrant Crypt Foci. *Anticancer Res.* **2004**, *24*, 1805–1812. [[PubMed](#)]
68. Rao, C.V.; Steele, V.E.; Swamy, M.V.; Patlolla, J.M.R.; Guruswamy, S.; Kopelovich, L. Inhibition of Azoxymethane-Induced Colorectal Cancer by CP-31398, a TP53 Modulator, Alone or in Combination with Low Doses of Celecoxib in Male F344 Rats. *Cancer Res.* **2009**, *69*, 8175–8182. [[CrossRef](#)] [[PubMed](#)]
69. Reddy, B.S.; Rao, C.V.; Rivenson, A.; Kelloff, G. Inhibitory Effect of Aspirin on Azoxymethane-Induced Colon Carcinogenesis in F344 Rats. *Carcinogenesis* **1993**, *14*, 1493–1497. [[CrossRef](#)] [[PubMed](#)]
70. Kanauchi, O.; Mitsuyama, K.; Andoh, A.; Iwanaga, T. Modulation of Intestinal Environment by Prebiotic Germinated Barley Foodstuff Prevents Chemo-Induced Colonic Carcinogenesis in Rats. *Oncol. Rep.* **2008**, *20*, 793–801. [[CrossRef](#)] [[PubMed](#)]
71. Li, H.; Schut, H.A.J.; Conran, P.; Kramer, P.M.; Lubet, R.A.; Steele, V.E.; Hawk, E.E.; Kelloff, G.J.; Pereira, M.A. Prevention by Aspirin and Its Combination with α -Difluoromethylornithine of Azoxymethane-Induced Tumors, Aberrant Crypt Foci and Prostaglandin E2 Levels in Rat Colon. *Carcinogenesis* **1999**, *20*, 425–430. [[CrossRef](#)]
72. Mølck, A.-M.; Poulsen, M.; Meyer, O. The Combination of 1 α ,25(OH) $_2$ -Vitamin D3, Calcium and Acetylsalicylic Acid Affects Azoxymethane-Induced Aberrant Crypt Foci and Colorectal Tumours in Rats. *Cancer Lett.* **2002**, *10*, 19–28. [[CrossRef](#)]
73. Weisburger, J.H.; Rivenson, A.; Aliaga, C.; Reinhardt, J.; Kelloff, G.J.; Boone, C.W.; Steele, V.E.; Balentine, D.A.; Pittman, B.; Zang, E. Effect of Tea Extracts, Polyphenols, and Epigallocatechin Gallate on Azoxymethane-Induced Colon Cancer. *Exp. Biol. Med.* **1998**, *217*, 104–108. [[CrossRef](#)]
74. Reddy, B.S.; Wang, C.X.; Kong, A.-N.; Khor, T.O.; Zheng, X.; Steele, V.E.; Kopelovich, L.; Rao, C.V. Prevention of Azoxymethane-Induced Colon Cancer by Combination of Low Doses of Atorvastatin, Aspirin, and Celecoxib in F 344 Rats. *Cancer Res.* **2006**, *66*, 4542–4546. [[CrossRef](#)]
75. Velmurugan, B.; Singh, R.P.; Agarwal, R.; Agarwal, C. Dietary-Feeding of Grape Seed Extract Prevents Azoxymethane-Induced Colonic Aberrant Crypt Foci Formation in Fischer 344 Rats. *Mol. Carcinog.* **2010**, *49*, 641–652. [[CrossRef](#)]
76. Reddy, B.S.; Patlolla, J.M.; Simi, B.; Wang, S.H.; Rao, C.V. Prevention of Colon Cancer by Low Doses of Celecoxib, a Cyclooxygenase Inhibitor, Administered in Diet Rich in ω -3 Polyunsaturated Fatty Acids. *Cancer Res.* **2005**, *65*, 8022–8027. [[CrossRef](#)]
77. Corpet, D.E.; Parnaud, G. Polyethylene-Glycol, a Potent Suppressor of Azoxymethane-Induced Colonic Aberrant Crypt Foci in Rats. *Carcinogenesis* **1999**, *20*, 915–918. [[CrossRef](#)]
78. Pierre, F.; Freeman, A.; Taché, S.; Van der Meer, R.; Corpet, D.E. Beef Meat and Blood Sausage Promote the Formation of Azoxymethane-Induced Mucin-Depleted Foci and Aberrant Crypt Foci in Rat Colons. *J. Nutr.* **2004**, *134*, 2711–2716. [[CrossRef](#)]
79. Watanabe, K.; Reddy, B.S.; Weisburger, J.H.; Kritchevsky, D. Effect of Dietary Alfalfa, Pectin, and Wheat Bran on Azoxymethane-or Methylnitrosourea-Induced Colon Carcinogenesis in F344 Rats. *J. Natl. Cancer Inst.* **1979**, *63*, 141–145.
80. Melo, A.; Mendonça, M.; Rosa-Castro, R. The Protective Effects of Fermented Kefir Milk on Azoxymethane-Induced Aberrant Crypt Formation in Mice Colon. *Tissue Cell* **2018**, *52*, 51–56. [[CrossRef](#)]

81. Clarke, J.M.; Topping, D.L.; Bird, A.R.; Young, G.P.; Cobiac, L. Effects of High-Amylose Maize Starch and Butyrylated High-Amylose Maize Starch on Azoxymethane-Induced Intestinal Cancer in Rats. *Carcinogenesis* **2008**, *29*, 2190–2194. [[CrossRef](#)]
82. Bonin, A.M.; Yáñez, J.A.; Fukuda, C.; Teng, X.W.; Dillon, C.T.; Hambley, T.W.; Lay, P.A.; Davies, N.M. Inhibition of Experimental Colorectal Cancer and Reduction in Renal and Gastrointestinal Toxicities by Copper–Indomethacin in Rats. *Cancer Chemother. Pharmacol.* **2010**, *66*, 755–764. [[CrossRef](#)]
83. Martin, J.E.; Le Leu, R.K.; Hu, Y.; Young, G.P. R-Flurbiprofen Suppresses Distal Nonmucin-Producing Colorectal Tumors in Azoxymethane-Treated Rats, without Suppressing Eicosanoid Production. *Am. J. Physiol. Gastrointest. Liver Physiol.* **2010**, *298*, G860–G864. [[CrossRef](#)]
84. Raju, J.; Bielecki, A.; Caldwell, D.; Lok, E.; Taylor, M.; Kapal, K.; Curran, I.; Cooke, G.M.; Bird, R.P.; Mehta, R. Soy Isoflavones Modulate Azoxymethane-Induced Rat Colon Carcinogenesis Exposed Pre- and Postnatally and Inhibit Growth of DLD-1 Human Colon Adenocarcinoma Cells by Increasing the Expression of Estrogen Receptor- β . *J. Nutr.* **2009**, *139*, 474–481. [[CrossRef](#)]
85. Le Leu, R.K.; Hu, Y.; Brown, I.L.; Woodman, R.J.; Young, G.P. Synbiotic Intervention of Bifidobacterium Lactis and Resistant Starch Protects against Colorectal Cancer Development in Rats. *Carcinogenesis* **2010**, *31*, 246–251. [[CrossRef](#)] [[PubMed](#)]
86. Liu, H.; Zhang, L.; Li, G.; Gao, Z. Xanthohumol Protects against Azoxymethane-Induced Colorectal Cancer in Sprague-Dawley Rats. *Environ. Toxicol.* **2020**, *35*, 136–144. [[CrossRef](#)] [[PubMed](#)]
87. Braga, V.N.L.; Juanes, C.D.C.; Peres Júnior, H.D.S.; Sousa, J.R.D.; Cavalcanti, B.C.; Jamacaru, F.V.F.; Lemos, T.L.G.D.; Dornelas, C.A. Gum Arabic and Red Propolis Protecting Colorectal Preneoplastic Lesions in a Rat Model of Azoxymethane. *Acta Cir. Bras.* **2019**, *34*, e201900207. [[CrossRef](#)] [[PubMed](#)]
88. Tanaka, T.; Kohno, H.; Suzuki, R.; Yamada, Y.; Sugie, S.; Mori, H. A Novel Inflammation-Related Mouse Colon Carcinogenesis Model Induced by Azoxymethane and Dextran Sodium Sulfate. *Cancer Sci.* **2003**, *94*, 965–973. [[CrossRef](#)]
89. Tanaka, T.; Suzuki, R.; Kohno, H.; Sugie, S.; Takahashi, M.; Wakabayashi, K. Colonic Adenocarcinomas Rapidly Induced by the Combined Treatment with 2-Amino-1-Methyl-6-Phenylimidazo[4,5-b]Pyridine and Dextran Sodium Sulfate in Male ICR Mice Possess β -Catenin Gene Mutations and Increases Immunoreactivity for β -Catenin, Cyclooxygenase. *Carcinogenesis* **2005**, *26*, 229–238. [[CrossRef](#)]
90. Kohno, H.; Suzuki, R.; Sugie, S.; Tanaka, T. β -Catenin Mutations in a Mouse Model of Inflammation-Related Colon Carcinogenesis Induced by 1,2-Dimethylhydrazine and Dextran Sodium Sulfate. *Cancer Sci.* **2005**, *96*, 69–76. [[CrossRef](#)]
91. Suzuki, R.; Kohno, H.; Sugie, S.; Nakagama, H.; Tanaka, T. Strain Differences in the Susceptibility to Azoxymethane and Dextran Sodium Sulfate-Induced Colon Carcinogenesis in Mice. *Carcinogenesis* **2006**, *27*, 162–169. [[CrossRef](#)]
92. Robertis, M.; Massi, E.; Poeta, M.L.; Carotti, S.; Cecchetelli, L.; Signori, E.; Fazio, V.M. The AOM/DSS Murine Model for the Study of Colon Carcinogenesis: From Pathways to Diagnosis and Therapy Studies. *J. Carcinog.* **2011**, *10*. [[CrossRef](#)]
93. Takayama, K.; Yamashita, K.; Wakabayashi, K.; Sugimura, T.; Nagao, M. DNA Modification by 2-Amino-1-Methyl-6-Phenylimidazo[4,5-b]Pyridine in Rats. *Jpn. J. Cancer Res.* **1989**, *80*, 1145–1148. [[CrossRef](#)]
94. Nakagama, H.; Nakanishi, M.; Ochiai, M. Modeling Human Colon Cancer in Rodents Using a Food-Borne Carcinogen, PhIP. *Cancer Sci.* **2005**, *96*, 627–636. [[CrossRef](#)]
95. Ito, N.; Hasegawa, R.; Sano, M.; Tamano, S.; Esumi, H.; Takayama, S.; Sugimura, T. A New Colon and Mammary Carcinogen in Cooked Food, 1-Amino-1-Methyl-6-Phenylimidazo[4,5-b]Pyridine (PhIP). *Carcinogenesis* **1991**, *12*, 1503–1506. [[CrossRef](#)]
96. Guo, Y.; Liu, Y.; Zhang, C.; Su, Z.-Y.; Li, W.; Huang, M.-T.; Kong, A.-N. The Epigenetic Effects of Aspirin: The Modification of Histone H3 Lysine 27 Acetylation in the Prevention of Colon Carcinogenesis in Azoxymethane- and Dextran Sulfate Sodium-Treated CF-1 Mice. *Carcinogenesis* **2016**, *37*, 616–624. [[CrossRef](#)]
97. Chung, K.-S.; Cheon, S.-Y.; Roh, S.-S.; Lee, M.; An, H.-J. Chemopreventive Effect of Aster Glehni on Inflammation-Induced Colorectal Carcinogenesis in Mice. *Nutrients* **2018**, *10*, 202. [[CrossRef](#)]
98. Nam, S.Y.; Kim, J.S.; Kim, J.M.; Lee, J.Y.; Kim, N.; Jung, H.C.; Song, I.S. DA-6034, a Derivative of Flavonoid, Prevents and Ameliorates Dextran Sulfate Sodium-Induced Colitis and Inhibits Colon Carcinogenesis. *Exp. Biol. Med.* **2008**, *233*, 180–191. [[CrossRef](#)]
99. Zhao, Q.; Bi, Y.; Zhong, J.; Ren, Z.; Liu, Y.; Jia, J.; Yu, M.; Tan, Y.; Zhang, Q.; Yu, X. Pristimerin Suppresses Colorectal Cancer through Inhibiting Inflammatory Responses and Wnt/ β -Catenin Signaling. *Toxicol. Appl. Pharmacol.* **2020**, *386*, 114813. [[CrossRef](#)]
100. Wu, M.; Li, J.; An, Y.; Li, P.; Xiong, W.; Li, J.; Yan, D.; Wang, M.; Zhong, G. Chitoooligosaccharides Prevents the Development of Colitis-Associated Colorectal Cancer by Modulating the Intestinal Microbiota and Mycobiota. *Front. Microbiol.* **2019**, *10*, 2101. [[CrossRef](#)]
101. Moreira, T.G.; Horta, L.S.; Gomes-Santos, A.C.; Oliveira, R.P.; Queiroz, N.M.G.P.; Mangani, D.; Daniel, B.; Vieira, A.T.; Liu, S.; Rodrigues, A.M.; et al. CLA-Supplemented Diet Accelerates Experimental Colorectal Cancer by Inducing TGF- β -Producing Macrophages and T Cells. *Mucosal Immunol.* **2018**, *12*, 188–199. [[CrossRef](#)]
102. Huo, X.; Liu, D.; Gao, L.; Li, L.; Cao, L. Flavonoids Extracted from Licorice Prevents Colitis-Associated Carcinogenesis in AOM/DSS Mouse Model. *Int. J. Mol. Sci.* **2016**, *17*, 1343. [[CrossRef](#)]
103. Im, S.-A.; Kim, J.-W.; Kim, H.-S.; Park, C.-S.; Shin, E.; Do, S.-G.; Park, Y.I.; Lee, C.-K. Prevention of Azoxymethane/Dextran Sodium Sulfate-Induced Mouse Colon Carcinogenesis by Processed Aloe Vera Gel. *Int. Immunopharmacol.* **2016**, *40*, 428–435. [[CrossRef](#)] [[PubMed](#)]
104. Ki, H.-H.; Lee, J.-H.; Lee, H.-Y.; Lee, Y.-M.; Kim, D.-K. Triticum Aestivum Sprouts Extract Inhibits Azoxymethane (AOM)/Dextran Sodium Sulfate (DSS)-Induced Colon Carcinogenesis in Mice. *Nutr. Cancer* **2018**, *70*, 928–937. [[CrossRef](#)]

105. Kim, M.; Miyamoto, S.; Yasui, Y.; Oyama, T.; Murakami, A.; Tanaka, T. Zerumbone, a Tropical Ginger Sesquiterpene, Inhibits Colon and Lung Carcinogenesis in Mice. *Int. J. Cancer* **2009**, *124*, 264–271. [[CrossRef](#)] [[PubMed](#)]
106. Kohno, H.; Suzuki, R.; Curini, M.; Epifano, F.; Maltese, F.; Gonzales, S.P.; Tanaka, T. Dietary Administration with Prenyloxycoumarins, Auraptene and Collinin, Inhibits Colitis-Related Colon Carcinogenesis in Mice. *Int. J. Cancer* **2006**, *118*, 2936–2942. [[CrossRef](#)] [[PubMed](#)]
107. Kohno, H.; Suzuki, R.; Yasui, Y.; Miyamoto, S.; Wakabayashi, K.; Tanaka, T. Ursodeoxycholic Acid versus Sulfasalazine in Colitis-Related Colon Carcinogenesis in Mice. *Clin. Cancer Res.* **2007**, *13*, 2519–2525. [[CrossRef](#)] [[PubMed](#)]
108. Choi, Y.J.; Choi, Y.J.; Kim, N.; Nam, R.H.; Lee, S.; Lee, H.S.; Lee, H.-N.; Surh, Y.-J.; Lee, D.H. Açai Berries Inhibit Colon Tumorigenesis in Azoxymethane/Dextran Sulfate Sodium-Treated Mice. *Gut Liver* **2017**, *11*, 243–252. [[CrossRef](#)]
109. Terasaki, M.; Masaka, S.; Fukada, C.; Houzaki, M.; Endo, T.; Tanaka, T.; Maeda, H.; Miyashita, K.; Mutoh, M. Salivary Glycine Is a Significant Predictor for the Attenuation of Polyp and Tumor Microenvironment Formation by Fucoxanthin in AOM/DSS Mice. *In Vivo* **2019**, *33*, 365–374. [[CrossRef](#)]
110. Kohno, H.; Suzuki, R.; Sugie, S.; Tanaka, T. Suppression of Colitis-Related Mouse Colon Carcinogenesis by a COX-2 Inhibitor and PPAR Ligands. *BMC Cancer* **2005**, *5*, 46. [[CrossRef](#)]
111. Predes, D.; Oliveira, L.F.S.; Ferreira, L.S.S.; Maia, L.A.; Delou, J.M.A.; Faletti, A.; Oliveira, I.; Amado, N.G.; Reis, A.H.; Fraga, C.A.M.; et al. The Chalcone Lonchocarpin Inhibits Wnt/ β -Catenin Signaling and Suppresses Colorectal Cancer Proliferation. *Cancers* **2019**, *11*, 1968. [[CrossRef](#)]
112. Canene-Adams, K.; Sfanos, K.S.; Liang, C.-T.; Yegnasubramanian, S.; Nelson, W.G.; Brayton, C.; De Marzo, A.M. Dietary Chemoprevention of PhIP Induced Carcinogenesis in Male Fischer 344 Rats with Tomato and Broccoli. *PLoS ONE* **2013**, *8*, e79842. [[CrossRef](#)]
113. Narushima, S.; Sakata, T.; Hioki, K.; Itoh, T.; Nomura, T.; Itoh, K. Inhibitory Effect of Yogurt on Aberrant Crypt Foci Formation in the Rat Colon and Colorectal Tumorigenesis in RasH2 Mice. *Exp. Anim.* **2010**, *59*, 487–494. [[CrossRef](#)]
114. Carter, O.; Wang, R.; Dashwood, W.M.; Orner, G.A.; Fischer, K.A.; Löhr, C.V.; Pereira, C.B.; Bailey, G.S.; Williams, D.E.; Dashwood, R.H. Comparison of White Tea, Green Tea, Epigallocatechin-3-Gallate, and Caffeine as Inhibitors of PhIP-Induced Colonic Aberrant Crypts. *Nutr. Cancer* **2007**, *58*, 60–65. [[CrossRef](#)]
115. Tang, M.X.; Ogawa, K.; Asamoto, M.; Chewonarin, T.; Suzuki, S.; Tanaka, T.; Shirai, T. Effects of Nobiletin on PhIP-Induced Prostate and Colon Carcinogenesis in F344 Rats. *Nutr. Cancer* **2011**, *63*, 227–233. [[CrossRef](#)]
116. Santana-Rios, G.; Orner, G.A.; Xu, M.; Izquierdo-Pulido, M. Inhibition by White Tea of 2-Amino-1-Methyl-6-Phenylimidazo[4,5-b]Pyridine-Induced Colonic Aberrant Crypts in the F344 Rat. *Nutr. Cancer* **2001**, *41*. [[CrossRef](#)]
117. Hikosaka, A. Inhibitory Effects of Soy Isoflavones on Rat Prostate Carcinogenesis Induced by 2-Amino-1-Methyl-6-Phenylimidazo[4,5-b]Pyridine (PhIP). *Carcinogenesis* **2003**, *25*, 381–387. [[CrossRef](#)]
118. Guo, D.; Schut, H.A.; Davis, C.D.; Snyderwine, E.G.; Bailey, G.S.; Dashwood, R.H. Protection by Chlorophyllin and Indole-3-Carbinol against 2-Amino-1-Methyl-6-Phenylimidazo[4,5-b]Pyridine (PhIP)-Induced DNA Adducts and Colonic Aberrant Crypts in the F344 Rat. *Carcinogenesis* **1995**, *16*, 2931–2937. [[CrossRef](#)]
119. Hagiwara, A.; Boonyaphiphat, P.; Tanaka, H.; Kawabe, M.; Tamano, S.; Kaneko, H.; Matsui, M.; Hirose, M.; Ito, N.; Shirai, T. Organ-Dependent Modifying Effects of Caffeine, and Two Naturally Occurring Antioxidants Alpha-Tocopherol and n-Triatriacontane-16,18-Dione, on 2-Amino-1-Methyl-6-Phenylimidazo[4,5-b]Pyridine (PhIP)-Induced Mammary and Colonic Carcinogenesis in Female F344 Rats. *Jpn. J. Cancer Res.* **1999**, *90*, 399–405. [[CrossRef](#)]
120. Tan, W. Chemoprevention of 2-Amino-1-Methyl-6-Phenylimidazo [4,5-b] Pyridine-Induced Carcinogen-DNA Adducts by Chinese Cabbage in Rats. *World J. Gastroenterol.* **1999**, *5*, 138. [[CrossRef](#)]
121. Yamada, Y.; Mori, H. Multistep Carcinogenesis of the Colon in Apc Min/+ Mouse. *Cancer Sci.* **2007**, *98*, 6–10. [[CrossRef](#)]
122. Moser, A.; Gledhill, S.; Dove, W. Loss of Apc in Intestinal Adenomas from Min Mice. *Cancer Res.* **1994**, *54*, 5947–5952.
123. Floyd, R.A.; Towner, R.A.; Wu, D.; Abbott, A.; Cranford, R.; Branch, D.; Guo, W.-X.; Foster, S.B.; Jones, I.; Alam, R.; et al. Anti-Cancer Activity of Nitrones in the APCMin/+ Model of Colorectal Cancer. *Free Radic. Res.* **2010**, *44*, 108–117. [[CrossRef](#)]
124. Mutanen, M.; Pajari, A.-M.; Päivärinta, E.; Misikangas, M.; Rajakangas, J.; Marttinen, M.; Oikarinen, S. Berries as Chemopreventive Dietary Constituents—A Mechanistic Approach with the Apc^{Min/+} Mouse. *Asia Pac. J. Clin. Nutr.* **2008**, *17* (Suppl. S1), 123–125.
125. Swamy, M.V.; Patlolla, J.M.R.; Steele, V.E.; Kopelovich, L.; Reddy, B.S.; Rao, C.V. Chemoprevention of Familial Adenomatous Polyposis by Low Doses of Atorvastatin and Celecoxib Given Individually and in Combination to APC^{Min} Mice. *Cancer Res.* **2006**, *66*, 7370–7377. [[CrossRef](#)]
126. Ritland, S.R.; Gendler, S.J. Chemoprevention of Intestinal Adenomas in the ApcMin Mouse by Piroxicam: Kinetics, Strain Effects and Resistance to Chemosuppression. *Carcinogenesis* **1999**, *20*, 51–58. [[CrossRef](#)]
127. Fini, L.; Piazzini, G.; Daoud, Y.; Selgrad, M.; Maegawa, S.; Garcia, M.; Fogliano, V.; Romano, M.; Graziani, G.; Vitaglione, P.; et al. Chemoprevention of Intestinal Polyps in Apc^{Min/+} Mice Fed with Western or Balanced Diets by Drinking Annurca Apple Polyphenol Extract. *Cancer Prev. Res.* **2011**, *4*, 907–915. [[CrossRef](#)]
128. Phutthaphadoong, S.; Yamada, Y.; Hirata, A.; Tomita, H.; Hara, A.; Limtrakul, P.; Iwasaki, T.; Kobayashi, H.; Mori, H. Chemopreventive Effect of Fermented Brown Rice and Rice Bran (FBRA) on the Inflammation-Related Colorectal Carcinogenesis in Apc^{Min/+} Mice. *Oncol. Rep.* **2010**, *23*, 53–59. [[CrossRef](#)]

129. Khor, T.O.; Hu, R.; Shen, G.; Jeong, W.-S.; Hebbar, V.; Chen, C.; Xu, C.; Nair, S.; Reddy, B.; Chada, K.; et al. Pharmacogenomics of Cancer Chemopreventive Isothiocyanate Compound Sulforaphane in the Intestinal Polyps of *Apc^{Min/+}* Mice. *Biopharm. Drug Dispos.* **2006**, *27*, 407–420. [[CrossRef](#)]
130. Smith, D.L.H.; Keshavan, P.; Avissar, U.; Ahmed, K.; Zucker, S.D. Sodium Taurocholate Inhibits Intestinal Adenoma Formation in *APC^{Min/+}* Mice, Potentially through Activation of the Farnesoid X Receptor. *Carcinogenesis* **2010**, *31*, 1100–1109. [[CrossRef](#)]
131. Tomimoto, A.; Endo, H.; Sugiyama, M.; Fujisawa, T.; Hosono, K.; Takahashi, H.; Nakajima, N.; Nagashima, Y.; Wada, K.; Nakagama, H.; et al. Metformin Suppresses Intestinal Polyp Growth in *Apc^{Min/+}* Mice. *Cancer Sci.* **2008**, *99*, 2136–2141. [[CrossRef](#)]
132. Rajamanickam, S.; Velmurugan, B.; Kaur, M.; Singh, R.P.; Agarwal, R. Chemoprevention of Intestinal Tumorigenesis in *APC^{min/+}* Mice by Silibinin. *Cancer Res.* **2010**, *70*, 2368–2378. [[CrossRef](#)]
133. Barnes, C.J.; Lee, M. Chemoprevention of Spontaneous Intestinal Adenomas in the Adenomatous Polyposis Coli Min Mouse Model with Aspirin. *Gastroenterology* **1998**, *114*, 873–877. [[CrossRef](#)]
134. Murphy, E.A.; Davis, J.M.; McClellan, J.L.; Gordon, B.T.; Carmichael, M.D. Curcumin's Effect on Intestinal Inflammation and Tumorigenesis in the *Apc^{Min/+}* Mouse. *J. Interferon Cytokine Res.* **2011**, *31*, 219–226. [[CrossRef](#)]
135. Bobe, G.; Wang, B.; Seeram, N.P.; Nair, M.G.; Bourquin, L.D. Dietary Anthocyanin-Rich Tart Cherry Extract Inhibits Intestinal Tumorigenesis in *APC^{Min}* Mice Fed Suboptimal Levels of Sulindac. *J. Agric. Food Chem.* **2006**, *54*, 9322–9328. [[CrossRef](#)] [[PubMed](#)]
136. Mehl, K.A.; Davis, J.M.; Clements, J.M.; Berger, F.G.; Pena, M.M.; Carson, J.A. Decreased Intestinal Polyp Multiplicity Is Related to Exercise Mode and Gender in *Apc^{Min/+}* Mice. *J. Appl. Physiol.* **2005**, *98*, 2219–2225. [[CrossRef](#)] [[PubMed](#)]
137. Sale, S.; Tunstall, R.G.; Ruparelia, K.C.; Butler, P.C.; Potter, G.A.; Steward, W.P.; Gescher, A.J. Effects of the Potential Chemopreventive Agent DMU-135 on Adenoma Development in the *Apc^{Min/+}* Mouse. *Investig. New Drugs* **2006**, *24*, 459–464. [[CrossRef](#)] [[PubMed](#)]
138. Yamaguchi, K.; Cekanova, M.; McEntee, M.F.; Yoon, J.-H.; Fischer, S.M.; Renes, I.B.; Van Seuning, I.; Baek, S.J. Peroxisome Proliferator-Activated Receptor Ligand MCC-555 Suppresses Intestinal Polyps in *Apc^{Min/+}* Mice via Extracellular Signal-Regulated Kinase and Peroxisome Proliferator-Activated Receptor-Dependent Pathways. *Mol. Cancer Ther.* **2008**, *7*, 2779–2787. [[CrossRef](#)]
139. Sørensen, I.K.; Kristiansen, E.; Mortensen, A.; Nicolaisen, G.M.; Wijnands, J.A.H.; van Kranen, H.J.; van Kreijl, C.F. The Effect of Soy Isoflavones on the Development of Intestinal Neoplasia in *Apc^{Min}* Mouse. *Cancer Lett.* **1998**, *130*, 217–225. [[CrossRef](#)]
140. Fan, K.; Kurihara, N.; Abe, S.; Ho, C.-T.; Ghai, G.; Yang, K. Chemopreventive Effects of Orange Peel Extract (OPE) I. OPE Inhibits Intestinal Tumor Growth in *Apc^{Min/+}* Mice. *J. Med. Food* **2007**, *10*, 11–17. [[CrossRef](#)]
141. Baltgalvis, K.A.; Berger, F.G.; Peña, M.M.O.; Davis, J.M.; Carson, J.A. Effect of Exercise on Biological Pathways in *Apc^{Min/+}* Mouse Intestinal Polyps. *J. Appl. Physiol.* **2008**, *104*, 1137–1143. [[CrossRef](#)]
142. Mabley, J.G.; Pacher, P.; Bai, P.; Wallace, R.; Goonesekera, S.; Virag, L.; Southan, G.J.; Szabó, C. Suppression of Intestinal Polyposis in *Apc^{min/+}* Mice by Targeting the Nitric Oxide or Poly(ADP-Ribose) Pathways. *Mutat. Res. Fundam. Mol. Mech. Mutagenesis* **2004**, *548*, 107–116. [[CrossRef](#)]
143. Bose, M.; Hao, X.; Ju, J.; Husain, A.; Park, S.; Lambert, J.D.; Yang, C.S. Inhibition Of Tumorigenesis in *Apc^{Min/+}* Mice by a Combination of (–)-Epigallocatechin-3-Gallate and Fish Oil. *J. Agric. Food Chem.* **2007**, *55*, 7695–7700. [[CrossRef](#)]
144. Williamson, S.L.H.; Kartheuser, A.; Coaker, J.; Kooshkghazi, M.D.; Fodde, R.; Burn, J.; Mathers, J.C. Intestinal Tumorigenesis in the *Apc1638N* Mouse Treated with Aspirin and Resistant Starch for up to 5 Months. *Carcinogenesis* **1999**, *20*, 805–810. [[CrossRef](#)]
145. Amos-Landgraf, J.M.; Kwong, L.N.; Kendzioriski, C.M.; Reichelderfer, M.; Torrealba, J.; Weichert, J.; Haag, J.D.; Chen, K.-S.; Waller, J.L.; Gould, M.N.; et al. A Target-Selected *Apc*-Mutant Rat Kindred Enhances the Modeling of Familial Human Colon Cancer. *Proc. Natl. Acad. Sci. USA* **2007**, *104*, 4036–4041. [[CrossRef](#)]
146. Edelman, L.; Edelman, W. Loss of DNA Mismatch Repair Function and Cancer Predisposition in the Mouse: Animal Models for Human Hereditary Nonpolyposis Colorectal Cancer. *Am. J. Med Genet.* **2004**, *129C*, 91–99. [[CrossRef](#)]
147. Chang, Y.-J.; Hsu, W.-H.; Chang, C.-H.; Lan, K.-L.; Ting, G.; Lee, T.-W. Combined Therapeutic Efficacy of 188Re-Liposomes and Sorafenib in an Experimental Colorectal Cancer Liver Metastasis Model by Intraspinal Injection of C26-Luc Murine Colon Cancer Cells. *Mol. Clin. Oncol.* **2014**, *2*, 380–384. [[CrossRef](#)]
148. Dunnington, D.J.; Buscarino, C.; Gennaro, D.; Greig, R.; Poste, G. Characterization of an Animal Model of Metastatic Colon Carcinoma. *Int. J. Cancer* **1987**, *39*, 248–254. [[CrossRef](#)]
149. Xie, X.; Briinnert, N.; Jensen, G.; Albrechtsen, J.; Gotthardsen, B.; Rygaard, J. Comparative Studies between Nude and Scid Mice on the Growth and Metastatic Behavior of Xenografted Human Tumors. *Clin. Exp. Metastasis* **1992**, *10*, 201–210. [[CrossRef](#)]
150. Mittal, V.K.; Bhullar, J.S.; Jayant, K. Animal models of human colorectal cancer: Current status, uses and limitations. *World J. Gastroenterol.* **2015**, *21*, 11854–11861. [[CrossRef](#)]
151. Goldrosen, M.H. Murine Colon Adenocarcinoma. Immunobiology of Metastases. *Cancer* **1980**, *45*, 1223–1228. [[CrossRef](#)]
152. Donigan, M.; Loh, B.D.; Norcross, L.S.; Li, S.; Williamson, P.R.; DeJesus, S.; Ferrara, A.; Gallagher, J.T.; Baker, C.H. A Metastatic Colon Cancer Model Using Nonoperative Transanal Rectal Injection. *Surg. Endosc.* **2010**, *24*, 642–647. [[CrossRef](#)]
153. Tao, L.; Yang, J.-K.; Gu, Y.; Zhou, X.; Zhao, A.-G.; Zheng, J.; Zhu, Y.-J. Weichang'an and 5-Fluorouracil Suppresses Colorectal Cancer in a Mouse Model. *World J. Gastroenterol.* **2015**, *21*, 1125–1139. [[CrossRef](#)]