


RESEARCH ARTICLE

Open Access



Mild increases in plasma creatinine after intermediate to high-risk abdominal surgery are associated with long-term renal injury

Alexandre Joosten^{1,2*} , Brigitte Ickx¹, Zakaria Mokhtari¹, Luc Van Obbergh¹, Valerio Lucidi³, Vincent Collange⁴, Salima Naili², Philippe Ichai⁵, Didier Samuel⁵, Antonio Sa Cunha⁶, Brenton Alexander⁷, Matthieu Legrand^{8,9}, Fabio Silvio Taccone¹⁰, Anatole Harrois¹¹, Jacques Duranteau¹¹, Jean-Louis Vincent¹⁰, Joseph Rinehart¹² and Philippe Van der Linden¹³

Abstract

Background: The potential relationship between a mild acute kidney injury (AKI) observed in the immediate postoperative period after major surgery and its effect on long term renal function remains poorly defined. According to the “Kidney Disease: Improving Global Outcomes” (KDIGO) classification, a mild injury corresponds to a KIDIGO stage 1, characterized by an increase in creatinine of at least 0.3 mg/dl within a 48-h window or 1.5 to 1.9 times the baseline level within the first week post-surgery. We tested the hypothesis that patients who underwent intermediate-to high-risk abdominal surgery and developed mild AKI in the following days would be at an increased risk of long-term renal injury compared to patients with no postoperative AKI.

Methods: All consecutive adult patients with a plasma creatinine value ≤ 1.5 mg/dl who underwent intermediate-to high-risk abdominal surgery between 2014 and 2019 and who had at least three recorded creatinine measurements (before surgery, during the first seven postoperative days, and at long-term follow up [6 months–2 years]) were included. AKI was defined using a “modified” (without urine output criteria) KDIGO classification as mild (stage 1 characterised by an increase in creatinine of ≥ 0.3 mg/dl within 48-h or 1.5–1.9 times baseline) or moderate-to-severe (stage 2–3 characterised by increase in creatinine 2 to 3 times baseline or to ≥ 4.0 mg/dl). The exposure (postoperative kidney injury) and outcome (long-term renal injury) were defined and staged according to the same KDIGO initiative criteria. Development of long-term renal injury was compared in patients with and without postoperative AKI.

(Continued on next page)

* Correspondence: Alexandre.Joosten@erasme.ulb.ac.be; joosten-alexandre@hotmail.com

¹Department of Anesthesiology, CUB Erasme, Université Libre de Bruxelles, 808 route de Lennik, 1070 Bruxelles, Belgium

²Department of Anesthesiology and Intensive Care, Hôpitaux Universitaires Paris-Sud, Université Paris-Sud, Paul Brousse Hospital, Assistance Publique Hôpitaux de Paris (APHP), Université Paris-Saclay, 12 Avenue Paul Vaillant Couturier, 94800 Villejuif, France

Full list of author information is available at the end of the article



© The Author(s). 2021, corrected publication 2024. **Open Access** This article is licensed under a Creative Commons Attribution 4.0 International License, which permits use, sharing, adaptation, distribution and reproduction in any medium or format, as long as you give appropriate credit to the original author(s) and the source, provide a link to the Creative Commons licence, and indicate if changes were made. The images or other third party material in this article are included in the article's Creative Commons licence, unless indicated otherwise in a credit line to the material. If material is not included in the article's Creative Commons licence and your intended use is not permitted by statutory regulation or exceeds the permitted use, you will need to obtain permission directly from the copyright holder. To view a copy of this licence, visit <http://creativecommons.org/licenses/by/4.0/>. The Creative Commons Public Domain Dedication waiver (<http://creativecommons.org/publicdomain/zero/1.0/>) applies to the data made available in this article, unless otherwise stated in a credit line to the data.

(Continued from previous page)

Results: Among the 815 patients included, 109 (13%) had postoperative AKI (81 mild and 28 moderate-to-severe). The median long-term follow-up was 360, 354 and 353 days for the three groups respectively ($P = 0.2$). Patients who developed mild AKI had a higher risk of long-term renal injury than those who did not (odds ratio 3.1 [95%CI 1.7–5.5]; $p < 0.001$). In multivariable analysis, mild postoperative AKI was independently associated with an increased risk of developing long-term renal injury (adjusted odds ratio 4.5 [95%CI 1.8–11.4]; $p = 0.002$).

Conclusions: Mild AKI after intermediate-to high-risk abdominal surgery is associated with a higher risk of long-term renal injury 1 y after surgery.

Keywords: Acute kidney disease, Chronic kidney disease, Perioperative, Dialysis, Follow-up, Postoperative complications

Background

Acute kidney injury (AKI) occurs frequently in patients after major surgeries [1–3]. Most data regarding AKI outcomes have come from critically ill patients or postoperative vascular and cardiac patients [4–12]. In these study populations, AKI has consistently been reported to be associated with increased lengths of hospital stay, higher readmission rates and greater healthcare costs [12–15]. Development of AKI in these patients has also been associated with altered short and long-term clinical outcomes, including death [10, 16].

One of the most common systems used to diagnose AKI is the “Kidney Disease: Improving Global Outcomes” (KDIGO) classification, in which kidney dysfunction is based on changes in serum creatinine and urine output [17]. However, as urine output is rarely accurately measured in the perioperative setting, postoperative AKI is frequently assessed based on an increase in serum creatinine alone. Mild kidney injury is more frequent than moderate or severe injury after a major surgical procedure. Unfortunately, these three stages are generally combined into a global composite of “AKI”, ignoring the obvious differences in incidence and severity across the stages. Moreover, many clinicians (surgeons, intensivists and anaesthesiologists), routinely under-recognise the importance of mild AKI, [18] as they often consider postoperative AKI to be a transient phenomenon without short or long-term consequences [19]. However, Turan et al. recently reported that mild postoperative AKI could affect long-term renal function in patients who had had various non-cardiac surgical procedures [20]. Nevertheless, there is limited specific literature regarding the long-term renal consequences of mild AKI after major abdominal surgery [19–21].

We therefore conducted a retrospective cohort study to analyse the association between postoperative AKI and long-term renal injury after intermediate-to high-risk abdominal surgery. We hypothesised that patients with a slight increase in their postoperative plasma creatinine, corresponding to mild AKI, would be at higher

risk of long-term renal injury compared to patients without postoperative creatinine increase.

Methods

The Ethics Committee of Erasme, Free university of Brussels, Belgium on February 10th, 2020, approved this single centre retrospective cohort analysis (committee’s reference number: P2020/031). Data collection was performed by Z. M in our institution between February 11th and April 1st 2020.

We included all consecutive adult patients (≥ 18 years old) who:

- 1) had undergone elective intermediate-to high-risk open abdominal surgery (including hepatobiliary surgery, pancreatectomy, gastrectomy, oesophagectomy, cancer debulking, cystectomy) under general anaesthesia between January 1st, 2014, and April 30th, 2019. Patients who had had major vascular surgery were also included if the surgery involved an abdominal incision (e.g., aorto bifemoral bypass and abdominal aortic aneurysm surgery);
- 2) had a plasma creatinine value measured before surgery, within 7 days after surgery, and at a later follow up visit (6 months to 2 years after surgery).

Patients who received dialysis in the preoperative period, those with chronic kidney disease (predefined as a baseline creatinine level > 1.5 mg/dl), those who had emergency surgery and patients who had another surgical procedure in the 2 y following their first surgery (unless it was a redo surgery in the same admission) were excluded. Patients who had suprarenal clamping during their vascular surgery were also excluded as this clamping phase can seriously impact renal function.

For each eligible patient, we recorded, from our hospital health records, the plasma creatinine concentration prior to surgery (the most recent result available in the 3 months before surgery), the highest creatinine concentration during the seven postoperative days, and the creatinine concentration at long-term follow up (between 6

months and 2 years; if multiple creatinine values were available, the measurement closest to 1 y following surgery was always selected). If no long-term creatinine measurement was available in the hospital database, attempts were made to contact the patients and/or their general practitioners to obtain any values that had been measured elsewhere.

The change in creatinine concentration between the preoperative and the postoperative period was used to classify patients according to a “modified” KDIGO classification in which the urine output criteria were not considered [17]. Mild AKI (KDIGO stage 1) was characterised by an increase in creatinine of ≥ 0.3 mg/dl within 48-h or 1.5–1.9 times baseline; moderate AKI (KDIGO stage 2) by an increase in creatinine of 2–2.9 times baseline; and severe (KDIGO stage 3) was characterised by an increase in creatinine 3 times baseline or to ≥ 4.0 mg/dl). To simplify our statistical analysis because of the low occurrence rate, AKI stages 2 and 3 were combined into a single category (2–3), leaving us with three final groups (no AKI vs AKI stage 1 vs AKI stage 2–3).

Long-term renal injury was staged according to similar thresholds adopted from the KDIGO criteria. This was defined using the difference between the preoperative creatinine concentration and the long-term follow-up measurement as follows: no renal injury (creatinine increase of less than 0.3 mg/dl and less than 1.5 times the baseline); mild injury (creatinine increase of at least 0.3 mg/dl or 1.5 to 1.9 times the baseline level); moderate injury (creatinine 2.0 to 2.9 times the baseline); or severe injury (increase to greater than 3.0 times baseline or creatinine level of at least 4 mg/dl or dependency on renal replacement therapy).

Statistical analysis

Distribution of continuous data was analysed using a Kolmogorov-Smirnov test. Normally distributed data are presented as means \pm standard deviation and were compared between groups using a one-way analysis of variance. Non-normally distributed data are presented as medians (interquartiles ranges) and were compared using a Kruskal-Wallis test. Dichotomous variables are presented as crude numbers and percentages and were compared between groups using a Chi-square test. Modelling of the risk of long-term renal injury was performed using the same approach as Turan et al. [20] including early AKI and all covariates listed in Tables 1 and 2 in a logistic (binomial) model. Criteria which were independently associated with AKI in a univariable model at $P < 0.05$ were included in the multivariate model. For factors that were considered by the authors to be clinically equivalent measures of the same feature (for example weight and BMI, or Child-Pugh score and Child-Pugh class), only the factor with the strongest

significance was included. The risk of developing long-term renal injury is presented as an odds ratio with 95% confidence intervals. Statistical analyses were done using Minitab 16 (Paris, France and Medcalc Software LTD, Ostend, Belgium) and R (www.r-project.org).

Results

Among the 1482 patients who underwent intermediate- to high-risk abdominal surgery between January 1st 2014 and April 30th 2019, 815 patients met the inclusion criteria and were thus included in our study. The main reason for exclusion was lack of postoperative or long-term creatinine values (Fig. 1).

Among the 81 patients who developed mild postoperative AKI, 19 patients (24%) had persistent mild or moderate-to-severe renal injury 1 y after surgery, compared to 64 (9.1%) of those who had no postoperative AKI ($P < 0.001$) (Fig. 2). Among the 28 patients (3.4%) who developed moderate to severe AKI postoperatively, 10 (36%) had some degree of long-term renal dysfunction. Patients who developed mild AKI after surgery therefore had a threefold higher chance of developing long-term renal injury compared to patients without postoperative AKI (odds ratio [95% CI] of 3.1 [1.7–5.5]; $P = 0.0001$). In patients with postoperative AKI KDIGO stage 2–3, the odds ratio for development of long-term renal dysfunction was 5.6 (95% CI 2.5–12.6; $P < 0.0001$).

Occurrence of postoperative AKI was associated with older age, higher baseline creatinine level and presence of comorbid conditions, notably a history of chronic hypertension, myocardial infarction, atrial fibrillation, or chronic obstructive pulmonary disease (Table 1). Patients who developed postoperative AKI had longer surgery times, received more fluid and had a higher estimated blood loss during surgery compared to patients without postoperative AKI (Table 2). Patients with postoperative AKI also had more postoperative complications and a longer hospital length of stay (Table 3). Importantly, long-term creatinine values were measured around one year in median among all groups (Table 3; $P = 0.190$).

In multivariable analysis, development of postoperative AKI was independently associated with long-term renal injury (adjusted odds ratio [95%CI] of 4.5 [1.8–11.4]; $P = 0.002$) (Table 4).

Discussion

In a cohort of 815 patients who underwent intermediate- to high-risk abdominal surgery, more than one fifth of patients (21%) who developed mild postoperative AKI had mild renal injury long term, and 2.5% developed moderate to severe long-term renal injury. This observation demonstrates that even a slight increase in postoperative creatinine can be important and should not be neglected. Stated

Table 1 Patient Characteristics by acute kidney injury status

Variables	No AKI (N = 706)	AKI stage 1 (N = 81)	AKI stage 2–3 (N = 28)	P-value
Age (years)	65 [55–72]	68 [63–74]	65 [57–75]	0.038
Male (%)	424 (60)	60 (74)	25 (89)	0.001
BMI (kg/m ²)	25 [23–29]	26 [22–30]	27 [25–35]	0.1
ASA score (1–2 / 3–4)	430 / 276	50 / 31	16 / 12	0.9
Preop Hb (g/dL)	13.3 [12–14.5]	13.4 [11.8–14.3]	13.9 [12.5–14.7]	0.7
Preop creatinine (mg/dL)	0.8 [0.7–1.0]	1.0 [0.8–1.1]	1.0 [0.8–1.2]	< 0.001
Comorbidities; N (%)				
Ischemic heart disease	60 (8.5%)	3 (3.7%)	9 (32%)	< 0.001
Coronary arterial bypass graft	28 (3.9%)	3 (3.7%)	3 (11%)	0.2
Hypertension	319 (45%)	52 (64%)	20 (71%)	< 0.001
Hyperlipidaemia	194 (27%)	28 (35%)	7 (25%)	0.4
Stroke	28 (3.9%)	2 (2.5%)	3 (11%)	0.01
Atrial fibrillation	44 (6.2%)	12 (15%)	1 (3.6%)	0.9
Diabetes mellitus type 2	151 (21%)	17 (21%)	7 (25%)	0.008
COPD	86 (12%)	10 (12%)	9 (32%)	0.7
Cirrhosis	53 (7.5%)	4 (4.9%)	2 (7.1%)	
Medications; N (%)				
Aspirin	236 (33%)	32 (40%)	8 (29%)	0.5
Clopidogrel	32 (4.5%)	1 (1.2%)	3 (11%)	0.1
blocker	166 (24%)	28 (35%)	13 (46%)	0.003
ACEI	135 (19%)	23 (28%)	11 (39%)	0.007
ARB	47 (6.7%)	8 (9.9%)	3 (11%)	0.4
Calcium channel blocker	113 (16%)	19 (23%)	7 (25%)	0.1
Diuretics	59 (8.4%)	8 (9.9%)	8 (29%)	0.001
Statin	211 (30%)	18 (22%)	12 (43%)	0.1
Oral hypoglycaemic drugs	111 (15.7%)	10 (12%)	4 (14%)	0.7
Insulin	56 (7.9%)	7 (8.6%)	2 (7.1%)	0.9
Oral anticoagulation	65 (9.2%)	9 (11%)	3 (11%)	0.8
Type of Surgery (N)				
Pancreatectomy	155 (22%)	18 (22%)	3 (11%)	
Hepatobiliary	189 (27%)	14 (17%)	3 (11%)	
Oesophagectomy	75 (11%)	12 (15%)	3 (11%)	
Cystectomy	63 (8.9%)	15 (19%)	7 (25%)	
Cancer debulking	32 (4.5%)	2 (2.5%)	2 (7.1%)	
Major aortic vascular surgery	144 (20%)	15 (19%)	9 (32%)	
Other surgical procedure *	48 (6.7%)	5 (6.2%)	1 (3.6%)	

Values are presented as medians [interquartiles ranges] or numbers (percentages %)

Abbreviation: COPD chronic obstructive pulmonary disease, AKI acute kidney injury, BMI body mass index, preop preoperative, ACEI Angiotensin-converting-enzyme inhibitor, ARB Angiotensin II receptor blocker, Hb haemoglobin, ASA American Society of Anesthesiologists

* included: gastrectomy, open colectomy nephrectomy, surrenalectomy, prostatectomy)

a different way, development of mild postoperative AKI more than tripled the odds of having renal injury 1 y after surgery compared to patients without postoperative AKI.

Our results are in agreement with the only available study which examines the association of mild AKI with long-term renal injury [20]. This study, recently

published by Turan et al., utilized a large database from the Cleveland Clinic that included more than 15,000 patients who underwent a variety of non-cardiac surgical procedures ranging from low to high-risk. Interestingly, postoperative AKI was a complication in only 3% of their study population compared to 13.4% in our study.

Table 2 Intraoperative variables by acute kidney injury status

Variables	No AKI (N = 706)	AKI stage 1 (N = 81)	AKI stage 2–3 (N = 28)	P-value
Anaesthesia duration (min)	346 [260–446]	421 [339–502]	451 [354–576]	< 0.001
Surgery duration (min)	262 [184–352]	337 [263–397]	366 [282–445]	< 0.001
Total crystalloid (ml)	2000 [1300–3000]	3000 [2000–4000]	4000 [2000–5900]	< 0.001
Total colloid [‡] (ml)	500 [500–1000]	1000 [500–1500]	1000 [500–2000]	0.008
Total blood product (ml)	500 [300–800]	550 [396–1700]	525 [270–1900]	0.2
Total IN (ml)	2500 [1800–3500]	3500 [2500–5400]	4500 [2300–7300]	< 0.001
Estimated blood loss (ml)	500 [200–1000]	700 [300–1700]	1000 [500–1600]	< 0.001
Diuresis (ml)	300 [150–500]	300 [200–500]	300 [200–500]	0.9
Gastric suction (ml)	100 [50–100]	50 [50–100]	50 [50–160]	0.7
TOTAL OUT (ml)	900 [500–1600]	1100 [700–2100]	1400 [900–2200]	0.002
Net fluid balance (ml)	1500 [800–2300]	2300 [1400–3300]	3100 [1100–5200]	< 0.001
Use of vasopressors, \$ N (%)	554 (78%)	67 (83%)	23 (82%)	0.6

Values are presented as medians [interquartiles ranges] or numbers (percentages %)

\$: use of any vasopressor (ephedrine, phenylephrine, noradrenaline)

[‡] total colloid included 3% gelatin and 6% tetrastarch

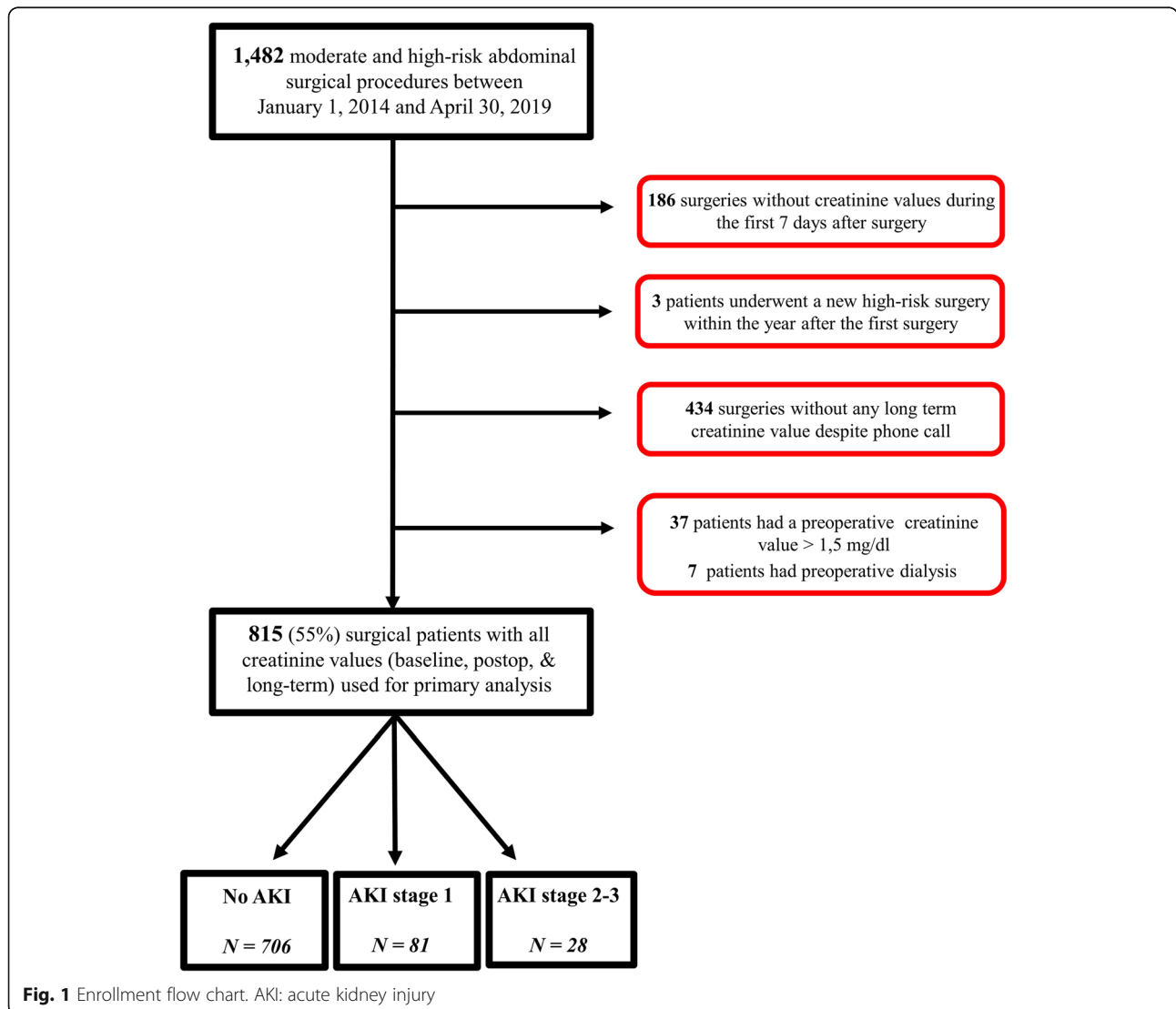


Fig. 1 Enrollment flow chart. AKI: acute kidney injury

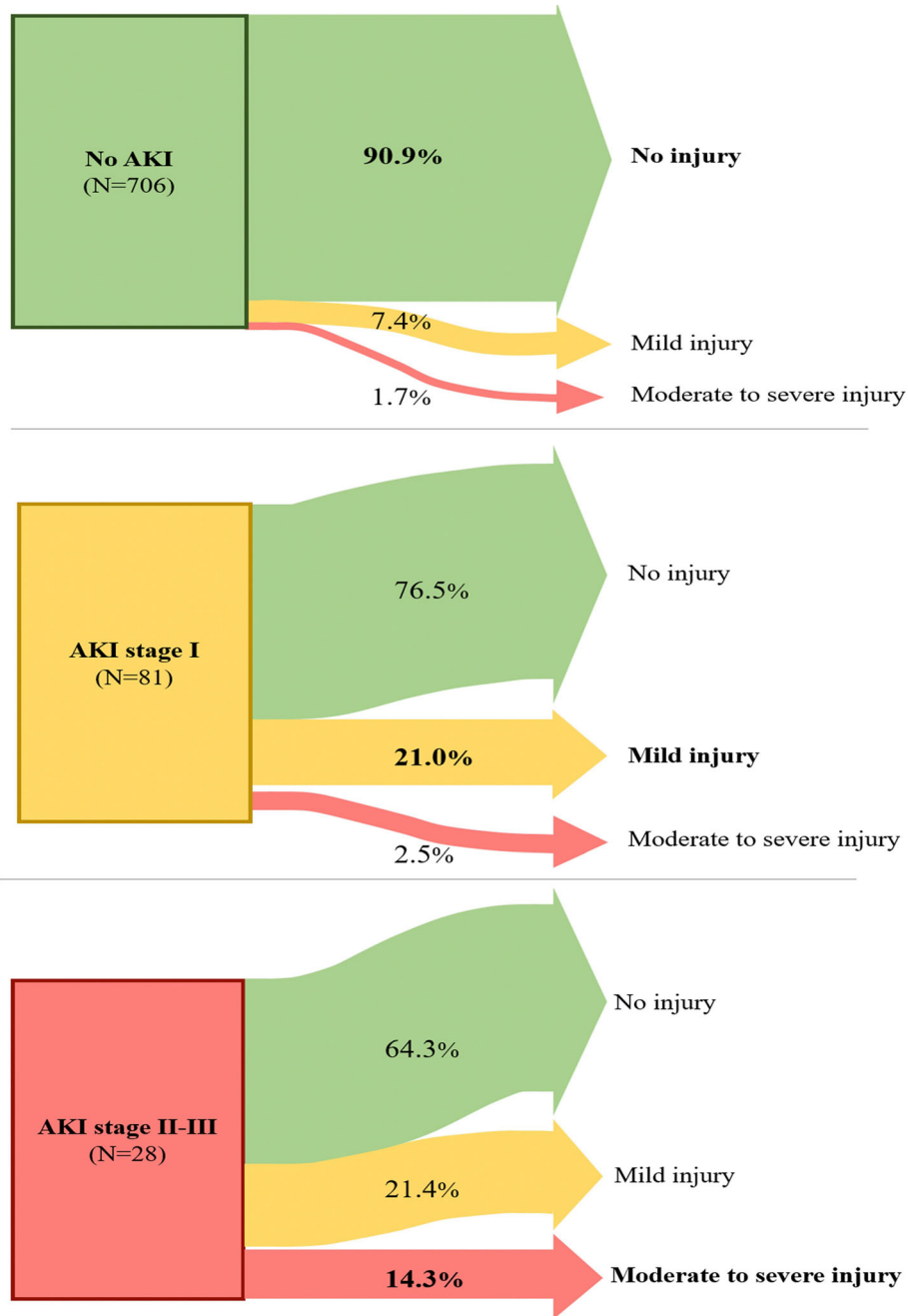


Fig. 2 Renal outcomes 1 y after surgery according to postoperative acute kidney injury (AKI) stage

This is not surprising as we included only patients who had had high-risk abdominal surgery that carries a greater risk of postoperative renal dysfunction than low-risk abdominal surgery. Moreover, major surgery is a well-known contributing factor for postoperative AKI [22]. This increased risk is likely due to larger fluid shifts, blood losses and a relatively high incidence of perioperative hypotension in these patients, all of which can compromise renal blood flow [23–26]. Moreover,

these types of surgical procedure are more often performed in elderly patients who are at a greater risk of having comorbidities that predispose to development of AKI.

As in the study by Turan et al., we used the KDIGO classification system to enable us to compare short and long-term renal function. Our study design allowed inclusion of all patients who had a creatinine measurement between six months and two years after surgery.

Table 3 Postoperative Variables by acute kidney injury status

Variables	No AKI (N = 706)	AKI stage 1 (N = 81)	AKI stage 2–3 (N = 28)	P-value
Length of stay in hospital (days)	9 [6–14]	15 [9–28]	17 [9–28]	< 0.001
Creatinine max during the first POD#7 (mg/dl)	0.8 [0.7–1.0]	1.4 [1.2–1.7]	2.8 [1.8–3.8]	< 0.001
Creatinine at hospital discharge	0.7 [0.6–0.9]	1.0 [0.8–1.2]	1.1 [0.8–1.5]	< 0.001
Creatinine at long-term follow up	0.9 [0.7–1.0]	1.0 [0.9–1.2]	1.1 [0.9–1.4]	< 0.001
Measurement of long-term follow up creatinine (days after surgery)	360 [303–393]	354 [298–376]	353 [294–386]	0.2
Minor complications; N (%)	146 (21%)	36 (44%)	14 (50%)	< 0.001
Superficial wound infection	19 (2.7%)	3 (3.7%)	0 (0%)	
Urinary infection	33 (4.7%)	10 (12%)	5 (18%)	
Paralytic ileus	20 (2.8%)	4 (4.9%)	5 (18%)	
Pneumonia	13 (1.8%)	1 (1.2%)	2 (7.1%)	
Postoperative confusion	20 (2.8%)	4 (4.9%)	3 (11%)	
Other infection	72 (10%)	20 (25%)	7 (25%)	
Major complications; N (%)	101 (14)	27 (33)	11 (39)	< 0.001
Anastomotic leakage	19 (2.7%)	5 (6.2%)	2 (7.1%)	
Peritonitis	4 (0.57%)	1 (1.2%)	1 (3.6%)	
Sepsis	22 (3.1%)	13 (16%)	5 (18%)	
Necrosis stoma	8 (1.1%)	1 (1.2%)	0 (0%)	
Wound dehiscence	9 (1.3%)	2 (2.4%)	1 (3.6%)	
Bleeding requiring a redo surgery	24 (3.4%)	7 (8.6%)	1 (3.5%)	
Pulmonary embolism	5 (0.71%)	1 (1.2%)	0 (0%)	
Pulmonary oedema	7 (0.99%)	1 (1.2%)	1 (3.6%)	
Acute coronary syndrome	0 (0%)	1 (1.2%)	0 (0%)	
Atrial fibrillation / arrhythmia	15 (2.1%)	4 (4.9%)	1 (3.6%)	
Stroke	0 (0%)	0 (0%)	0 (0%)	
Renal replacement therapy	0 (0%)	0 (0%)	0 (0%)	
Reoperation	35 (4.9%)	10 (12%)	3 (11%)	
30-day mortality	0 (0%)	0 (0%)	0 (0%)	

Values are medians [interquartiles ranges] or numbers (percentages %)

However, the timing of the long-term measurement did not differ between the three groups and was very close to one year. Another recent study published by Mizota et al. demonstrated that even transient AKI after major abdominal surgery increased the risk of chronic kidney disease and one-year mortality [19]. Thus, even if a

patient recovers from AKI within the first week after surgery, they should be considered at a greater risk of worse long-term outcome.

This study has some limitations that should be taken into consideration. First, our study was observational, retrospective, and single-centre and included a relatively small sample size, largely because of the high proportion of patients without long-term follow up creatinine concentrations. Therefore, a causal relation cannot be proven. Second, we excluded patients using a maximum creatinine cut-off value of 1.5 mg/dl and not using estimated glomerular filtration rate. Third, we were unable to determine if the long-term creatinine value that was obtained was collected in a stable patient or in someone experiencing a new onset acute illness. Fourth, we only included patients who underwent moderate to high-risk open abdominal surgery [27] so that the data cannot be extrapolated to other types of surgery (neurosurgical,

Table 4 Significant independent variables predicting long-term kidney injury in multivariable model

Variables	Adjusted odds ratio	[95%CI]	P-value
Postop AKI	4.5	[1.8–11]	0.002
ASA score	10.9	[1.2–100]	0.036
ARB	0.07	[0.0–0.7]	0.027
LLAO	4.9	[1.1–22]	0.037
Hepatectomy	0.12	[0.02–0.67]	0.016

ASA American Society of Anesthesiology physical status

ARB angiotensin II receptor blockers

LLAO lower limb arteriopathy obliterans

cardiac, etc). Moreover, we did not exclude the 9 patients (~1%) who underwent an open nephrectomy as this small number likely has a negligible impact on the study results. Fifth, as urine output was not used for the AKI classification (“modified” KDIGO classification), this may have led to an “underestimation” of the incidence of postoperative AKI in our study cohort. Lastly, our logistic regression only took into account perioperative variables so that we did have information on specific events during the long-term follow-up (oncological evolution or cardiovascular problems).

Conclusions

Although mild increases in postoperative plasma creatinine concentration are frequently considered to have little long-term clinical significance, we found that patients undergoing intermediate-to high-risk abdominal surgery who developed a mild increase in plasma creatinine concentration had a much higher incidence of long-term renal dysfunction. Clinicians should not neglect “minor” disturbances in renal function after surgery as they may persist or even worsen during long-term follow up. The presence of even mild postoperative AKI may indicate a need for tighter follow up to monitor long-term renal function.

Abbreviations

KDIGO: Kidney Disease: Improving Global Outcomes; AKI: Acute kidney injury

Acknowledgements

All the anesthesia and surgical teams for the help in completing the electronic medical records of the patients.

Authors' contributions

All authors read and approved the final manuscript. A.J: Study design and conception, data collection & analysis and drafting the manuscript. B.I: Data collection and editing the final manuscript. Z.M: Data collection & analysis and editing the final manuscript. L.V.O: Data collection and editing the final manuscript. V.L: Data collection and editing the final manuscript. V.C: Data collection and editing the final manuscript. S.N: Data analysis and editing the final manuscript. P.I: Data analysis and editing the final manuscript. D.S: Data analysis and editing the final manuscript. A. S.C: Data analysis and editing the final manuscript. B.A: Data collection and editing the final manuscript. M.L: Data analysis and editing the final manuscript. F.S.T: Data collection and editing the final manuscript. A.H: Data analysis and editing the final manuscript. J.D: Data analysis and editing the final manuscript. J.L.V: Data analysis and editing the final manuscript. J.R: Study design, statistical analysis and editing the final manuscript. P.VdL: Study design and conception, statistical analysis and editing the final manuscript. The authors read and approved the final manuscript.

Funding

The authors received no funding for this work.

Availability of data and materials

By request to the corresponding author.

Declarations

Ethics approval and consent to participate

By the Ethics Committee of Erasme hospital, free University of Brussels, (committee's reference number P2020/031) on February 10th, 2020. No Consent to participate needed for a retrospective study.

Consent for publication

Not applicable.

Competing interests

Alexandre Joosten is consultants for Edwards Lifesciences (Irvine, California, USA), for Aguetant Laboratoire (Lyon, France) and for Fresenius Kabi (Bad Homburg, Germany) Matthieu Legrand received research support from Shingotec (Hennigsdorf, Germany), lectures fees from Baxter (Guyancourt, France) and Fresenius Kabi (Bad Homburg, Germany), consulting fees from Novartis (Bâle, Switzerland) Philippe Van der Linden, has received, within the past 5 years, fees for lectures and consultancies from Fresenius GmbH (Bad Homburg, Germany), Aguetant SA (Lyon, France) and Nordic Pharma (Antwerpen, Belgium). Jean-Louis Vincent is Editor-in-Chief of Critical Care. He has no other conflicts related to this article.

The other authors have no conflicts of interest related to this article.

Author details

¹Department of Anesthesiology, CUB Erasme, Université Libre de Bruxelles, 808 route de Lennik, 1070 Bruxelles, Belgium. ²Department of Anesthesiology and Intensive Care, Hôpitaux Universitaires Paris-Sud, Université Paris-Sud, Paul Brousse Hospital, Assistance Publique Hôpitaux de Paris (APHP), Université Paris-Saclay, 12 Avenue Paul Vaillant Couturier, 94800 Villejuif, France. ³Department of Hepato-biliary Surgery, CUB Erasme, Université Libre de Bruxelles, 808 route de Lennik, 1070 Bruxelles, Belgium. ⁴Department of Anesthesiology, Médipole, Lyon Villeurbanne, France. ⁵Department of Liver Intensive Care Unit, AP-HP, Assistance Publique Hôpitaux de Paris, Paul-Brousse Hospital, Centre Hépatobiliaire, 12 Avenue Paul Vaillant Couturier, 94800 Villejuif, France. ⁶Department of Hepato-biliary and Pancreatic Surgery, Assistance Publique Hôpitaux de Paris, Paul-Brousse Hospital, Centre Hépatobiliaire, 12 Avenue Paul Vaillant Couturier, 94800 Villejuif, France. ⁷Department of Anesthesiology, University of California San Diego, 9500 Gilman Dr, La Jolla, CA 92093, USA. ⁸Department of Anesthesia and Perioperative care, University of California, San Francisco, 500 Parnassus Avenue, San Francisco, USA. ⁹UMR INSERM 942, Institut National de la Santé et de la Recherche Médicale (INSERM), INI-CRCT network, Paris, France. ¹⁰Department of Intensive Care, CUB Erasme, Université Libre de Bruxelles, 808 route de Lennik, 1070 Bruxelles, Belgium. ¹¹Department of Anesthesiology and Intensive Care, Hôpitaux Universitaires Paris-Sud, Université Paris-Sud, Bicetre Hospital, Assistance Publique Hôpitaux de Paris (APHP), Université Paris-Saclay, 78 rue du General Leclerc, 94270 Le Kremlin Bicetre, France. ¹²Department of Anesthesiology and Perioperative Care, University of California Irvine, 101, the City Drive South, Orange, California, USA. ¹³Department of Anesthesiology, Brugmann Hospital, Université Libre de Bruxelles, 4, Place A. Van Gehuchten, 1020 Bruxelles, Bruxelles, Belgium.

Received: 15 October 2020 Accepted: 20 April 2021

Published online: 30 April 2021

References

- O'Connor ME, Kirwan CJ, Pearse RM, Prowle JR. Incidence and associations of acute kidney injury after major abdominal surgery. *Intensive Care Med.* 2016;42(4):521–30.
- Long TE, Helgason D, Helgadóttir S, Pálsson R, Gudbjartsson T, Sigurdsson GH, et al. Acute kidney injury after abdominal surgery: incidence, risk factors, and outcome. *Anesth Analg.* 2016;122(6):1912–20. <https://doi.org/10.1213/ANE.0000000000001323>.
- Ostermann M, Cennamo A, Meersch M, Kunst G. A narrative review of the impact of surgery and anaesthesia on acute kidney injury. *Anaesthesia.* 2020;75(Suppl 1):e121–33.
- Harrois A, Grillot N, Figueiredo S, Duranteau J. Acute kidney injury is associated with a decrease in cortical renal perfusion during septic shock. *Crit Care.* 2018;22(1):161.
- Harrois A, Soyer B, Gauss T, Hamada S, Raux M, Duranteau J. Prevalence and risk factors for acute kidney injury among trauma patients: a multicenter cohort study. *Crit Care (London, Engl).* 2018;22(1):344.
- Sovik S, Isachsen MS, Nordhuus KM, Tveiten CK, Eken T. Acute kidney injury in trauma patients admitted to the ICU: a systematic review and meta-analysis. *Intensive Care Med.* 2019;45(4):407–19.

7. Forni LG, Darmon M, Ostermann M, Oudemans-van Straaten HM, Pettita V, Prowle JR, et al. Renal recovery after acute kidney injury. *Intensive Care Med.* 2017;43(6):855–66.
8. Brown JR, Hisey WM, Marshall EJ, Likosky DS, Nichols EL, Everett AD, et al. Acute kidney injury severity and Long-term readmission and mortality after cardiac surgery. *Ann Thorac Surg.* 2016;102(5):1482–9. <https://doi.org/10.1016/j.athoracsur.2016.04.020>.
9. Ferreiro A, Lombardi R. Acute kidney injury after cardiac surgery is associated with mid-term but not long-term mortality: A cohort-based study. *PLoS One.* 2017;12(7):e0181158.
10. Hobson CE, Yavas S, Segal MS, Schold JD, Tribble CG, Layon AJ, et al. Acute kidney injury is associated with increased long-term mortality after cardiothoracic surgery. *Circulation.* 2009;119(18):2444–53. <https://doi.org/10.1161/CIRCULATIONAHA.108.800011>.
11. Huber M, Ozrazgat-Baslanti T, Thottakkara P, Scali S, Bihorac A, Hobson C. Cardiovascular-specific mortality and kidney disease in patients undergoing vascular surgery. *JAMA Surg.* 2016;151(5):441–50. <https://doi.org/10.1001/jamasurg.2015.4526>.
12. Hobson C, Lysak N, Huber M, Scali S, Bihorac A. Epidemiology, outcomes, and management of acute kidney injury in the vascular surgery patient. *J Vasc Surg.* 2018;68(3):916–28. <https://doi.org/10.1016/j.jvs.2018.05.017>.
13. Huber M, Ozrazgat-Baslanti T, Thottakkara P, Efron PA, Feezor R, Hobson C, et al. Mortality and Cost of Acute and Chronic Kidney Disease after Vascular Surgery. *Ann Vasc Surg.* 2016;30:72–81 e71–72.
14. Kork F, Balzer F, Spies CD, Wernecke KD, Ginde AA, Jankowski J, et al. Minor postoperative increases of Creatinine are associated with higher mortality and longer hospital length of stay in surgical patients. *Anesthesiology.* 2015;123(6):1301–11. <https://doi.org/10.1097/ALN.0000000000000891>.
15. Zarbock A, Koyner JL, Hoste EAJ, Kellum JA. Update on perioperative acute kidney injury. *Anesth Analg.* 2018;127(5):1236–45. <https://doi.org/10.1213/ANE.0000000000003741>.
16. Liano F, Felipe C, Tenorio MT, Rivera M, Abraira V, Saez-de-Urturi JM, et al. Long-term outcome of acute tubular necrosis: a contribution to its natural history. *Kidney Int.* 2007;71(7):679–86. <https://doi.org/10.1038/sj.ki.5002086>.
17. Kellum JA, Lameire N. Diagnosis, evaluation, and management of acute kidney injury: a KDIGO summary (Part 1). *Crit Care (London, Engl).* 2013;17(1):204.
18. Meersch M, Schmidt C, Zarbock A. Perioperative acute kidney injury: an under-recognized problem. *Anesth Analg.* 2017;125(4):1223–32. <https://doi.org/10.1213/ANE.0000000000002369>.
19. Mizota T, Dong L, Takeda C, Shiraki A, Matsukawa S, Shimizu S, et al. Transient acute kidney injury after major abdominal surgery increases chronic kidney disease risk and 1-year mortality. *J Crit Care.* 2019;50:17–22. <https://doi.org/10.1016/j.jccr.2018.11.008>.
20. Turan A, Cohen B, Adegboye J, Makarova N, Liu L, Mascha EJ, et al. Mild acute kidney injury after noncardiac surgery is associated with Long-term renal dysfunction: a retrospective cohort study. *Anesthesiology.* 2020;132(5):1053–61. <https://doi.org/10.1097/ALN.0000000000003109>.
21. Kim CS, Bae EH, Ma SK, Kweon SS, Kim SW. Impact of transient and persistent acute kidney injury on chronic kidney disease progression and mortality after gastric surgery for gastric Cancer. *PLoS One.* 2016;11(12):e0168119. <https://doi.org/10.1371/journal.pone.0168119>.
22. Uchino S, Kellum JA, Bellomo R, Doig GS, Morimatsu H, Morgera S, et al. Acute renal failure in critically ill patients: a multinational, multicenter study. *JAMA.* 2005;294(7):813–8. <https://doi.org/10.1001/jama.294.7.813>.
23. Sun LY, Wijeyesundera DN, Tait GA, Beattie WS. Association of intraoperative hypotension with acute kidney injury after elective noncardiac surgery. *Anesthesiology.* 2015;123(3):515–23. <https://doi.org/10.1097/ALN.0000000000000765>.
24. Walsh M, Devereaux PJ, Garg AX, Kurz A, Turan A, Rodseth RN, et al. Relationship between intraoperative mean arterial pressure and clinical outcomes after noncardiac surgery: toward an empirical definition of hypotension. *Anesthesiology.* 2013;119(3):507–15. <https://doi.org/10.1097/A.LN.0b013e3182a10e26>.
25. Hallqvist L, Granath F, Huldt E, Bell M. Intraoperative hypotension is associated with acute kidney injury in noncardiac surgery: an observational study. *Eur J Anaesthesiol.* 2018;35(4):273–9. <https://doi.org/10.1097/EJA.0000000000000735>.
26. Wu X, Jiang Z, Ying J, Han Y, Chen Z. Optimal blood pressure decreases acute kidney injury after gastrointestinal surgery in elderly hypertensive patients: a randomized study: optimal blood pressure reduces acute kidney injury. *J Clin Anesth.* 2017;43:77–83. <https://doi.org/10.1016/j.jclinane.2017.09.004>.
27. Kristensen SD, Knuuti J, Saraste A, Anker S, Botker HE, Hert SD, et al. 2014 ESC/ESA guidelines on non-cardiac surgery: cardiovascular assessment and management: the joint task force on non-cardiac surgery: cardiovascular assessment and management of the European Society of Cardiology (ESC) and the European Society of Anaesthesiology (ESA). *Eur Heart J.* 2014;35(35):2383–431. <https://doi.org/10.1093/eurheartj/ehu282>.

Publisher's Note

Springer Nature remains neutral with regard to jurisdictional claims in published maps and institutional affiliations.

Ready to submit your research? Choose BMC and benefit from:

- fast, convenient online submission
- thorough peer review by experienced researchers in your field
- rapid publication on acceptance
- support for research data, including large and complex data types
- gold Open Access which fosters wider collaboration and increased citations
- maximum visibility for your research: over 100M website views per year

At BMC, research is always in progress.

Learn more biomedcentral.com/submissions

