

## RESEARCH ARTICLE

## Sulfation of a FLAG tag mediated by SLC35B2 and TPST2 affects antibody recognition

Xin-Yu Guo, Xiao-Dong Gao, Morihisa Fujita \*

Key Laboratory of Carbohydrate Chemistry and Biotechnology, Ministry of Education, School of Biotechnology, Jiangnan University, Wuxi, Jiangsu, China

\* [fujita@jiangnan.edu.cn](mailto:fujita@jiangnan.edu.cn)

## Abstract

A FLAG tag consisting of DYKDDDDK is an epitope tag that is frequently and widely used to detect recombinant proteins of interest. In this study, we performed a CRISPR-based genetic screening to identify factors involved in the detection of a FLAG-tagged misfolded model protein at the cell surface. In the screening, *SLC35B2*, which encodes 3'-phosphoadenosine-5'-phosphosulfate transporter 1, was identified as the candidate gene. The detection of FLAG-tagged misfolded proteins at the cell surface was significantly increased in *SLC35B2*-knockout cells. Furthermore, protein tyrosine sulfation mediated by tyrosyl-protein sulfotransferase 2 (TPST2) suppressed FLAG-tagged protein detection. Localization analysis of the FLAG-tagged misfolded proteins confirmed that defects in tyrosine sulfation are only responsible for enhancing anti-FLAG staining on the plasma membrane but not inducing the localization change of misfolded proteins on the plasma membrane. These results suggest that a FLAG tag on the misfolded protein would be sulfated, causing a reduced detection by the M2 anti-FLAG antibody. Attention should be required when quantifying the FLAG-tagged proteins in the secretory pathway.

 OPEN ACCESS

**Citation:** Guo X-Y, Gao X-D, Fujita M (2021) Sulfation of a FLAG tag mediated by SLC35B2 and TPST2 affects antibody recognition. PLoS ONE 16(5): e0250805. <https://doi.org/10.1371/journal.pone.0250805>

**Editor:** Hodaka Fujii, Hirosaki University Graduate School of Medicine, JAPAN

**Received:** January 14, 2021

**Accepted:** April 14, 2021

**Published:** May 5, 2021

**Copyright:** © 2021 Guo et al. This is an open access article distributed under the terms of the [Creative Commons Attribution License](https://creativecommons.org/licenses/by/4.0/), which permits unrestricted use, distribution, and reproduction in any medium, provided the original author and source are credited.

**Data Availability Statement:** All relevant data are within the paper and its [Supporting information](#) files.

**Funding:** National Natural Science Foundation of China 31770853 National Natural Science Foundation of China 32071278 the Program of Introducing Talents of Discipline to Universities 111-2-06 National first-class discipline program of Light Industry Technology and Engineering LITE2018-015 Top-notch Academic Programs Project of Jiangsu Higher Education Institutions the International Joint Research Laboratory for

## Introduction

Protein tags are peptide sequences that can be grafted onto a target recombinant protein. Protein tags can be removed by chemical agents or by enzymatic reactions. A FLAG tag is a commonly and widely used protein tag that could be added either to the N-terminus, C-terminus or intermediate regions of the targeted protein. The amino acid sequence motif of the FLAG-tag is DYKDDDDK, which contains an enterokinase cleavage site. Some types of commercially available antibodies (e.g., M1/4E11) recognize the [epitope](#) only when it is present at the N-terminus. However, other available antibodies (e.g., M2) show no position sensitivity. Previously, several studies have reported that FLAG is not a good protein tag because a tyrosine residue on the FLAG-tag can be sulfated [1, 2]. Some commercial antibodies, for example, M2, seem sensitive to the sulfation state of the FLAG tag [2, 3].

Sulfation is a post-translational modification that occurs in the *trans*-Golgi network (TGN) [4]. Both proteins and glycans can be modified with sulfates. SLC35B2 is 3'-phosphoadenosine-5'-phosphosulfate (PAPS) transporter 1, which transports the sulfate donor PAPS from

Investigation of Glycoprotein Biosynthesis at Jiangnan University.

**Competing interests:** The authors have declared that no competing interests exist.

the cytosol to the TGN. For protein sulfation, sulfate can be modified to a tyrosine residue on proteins, which is mediated by tyrosyl-protein sulfotransferases 1 and 2 (TPST1&2) [5, 6]. A tyrosine residue surrounded by negatively charged amino acids (e.g., glutamic acid and aspartic acid) on the peptide is recognized as a substrate for the enzymes [7]. Based on this rule, a prediction software for tyrosine sulfation was developed (<https://web.expasy.org/sulfinator/>) [8]. In most cases, tyrosine sulfation does not affect target protein stability and localization, whereas it changes protein function and antibody affinity [1, 9]. CCR5, which acts as a HIV co-receptor, receives tyrosine sulfation, which is essential for HIV infection [9].

Glycosylphosphatidylinositol (GPI) is a glycolipid utilized for membrane tethering of plasma membrane proteins [10–12]. GPI modification of proteins is carried out in the endoplasmic reticulum (ER). In the ER, there are quality control systems that monitor the folding status of proteins [13]. When the proteins fail to fold properly, they are recognized as misfolded proteins and degraded through the ER-associated degradation (ERAD) pathway [14]. However, fractions of misfolded GPI-anchored proteins (GPI-APs) are not degraded through ERAD, probably due to the presence of GPI anchors [15–17]. In mammalian cells, although misfolded GPI-APs are retained in the ER, they are rapidly released into the secretory pathway once acute ER stress was given [17]. Even under normal conditions, a small fraction of misfolded prion, CD59, and CD55 are constantly transported to the plasma membrane [18, 19].

In this study, we performed genome-wide CRISPR-Cas9 screening to identify factors involved in the surface expression of misfolded FLAG-tagged GPI-APs. Mutant cells whose surface was highly stained with the anti-FLAG antibody were enriched, and knockout genes were determined. *SLC35B2* was identified as the top gene in the screening. *SLC35B2*-KO and *TPST1*&*TPST2*-DKO cells showed higher anti-FLAG staining, presuming that protein tyrosine sulfation changes the localization of the misfolded FLAG-tagged GPI-AP to the cell surface. However, after we changed the FLAG tag to the MYC tag, the phenotype disappeared in *SLC35B2*-KO cells. Under confocal microscopy, we found that the majority of EGFP--FLAG-CD55 (C81A) still localized in the ER, not on the plasma membrane, similar to wild-type (WT) cells. Our results indicate that knocking out *SLC35B2* or *TPST1* and *TPST2* does not induce misfolded GPI-APs to migrate to the plasma membrane. Rather, the FLAG tag on misfolded GPI-APs might be sulfated, causing the low reactivity of the anti-FLAG antibody.

## Materials and methods

### Cells and culture

HEK293 cells and their KO derivative cells were cultured in Dulbecco's modified Eagle medium (DMEM) containing 10% (vol/vol) FCS (Biological Industries). Streptomycin/penicillin (1 µg/ml) was used where necessary. Cells were maintained at 37°C and 5% CO<sub>2</sub> in a humidified atmosphere. pPB-FRT-PGKp-BSD-mEGFP-FLAG-CD55 (C81A) and pCMV-hyPBBase [20] were cotransfected into HEK293 WT cells and selected with 10 µg/ml blasticidin for stable expression. A single clone of HEK293 cells stably expressing mEGFP-FLAG-CD55 (C81A) was isolated by limiting dilution and was used for a genetic screen. For CRISPR knock-out screening using the GeCKO library [21], 1 µg/ml puromycin was used to select cells that were infected by lentivirus. *SLC35B2*-KO cells stably expressing *SLC35B2* and *TPST1*&*2*-DKO cells stably expressing *TPST1* and/or *TPST2* were established by retrovirus-based vector infection, followed by selection with 400 µg/ml hygromycin B.

### Antibodies and materials

Mouse anti-FLAG (M2; Sigma and HT201-01; Transgen), anti-calnexin (M178-3; MBL), anti-c-MYC (9E10; Santa Cruz), and rabbit anti-FLAG (20543-1-AP; Proteintech) were used as the

primary antibodies. Phycoerythrin (PE)-conjugated goat anti-mouse IgG (eBioscience), PE-conjugated donkey anti-rabbit IgG (eBioscience), and Alexa Fluor 555-conjugated F(ab')<sub>2</sub>-goat anti-mouse IgG (H+L) cross-adsorbed secondary antibodies (Thermo Fisher Scientific) were used as the secondary antibodies. NaClO<sub>3</sub> (403016; Sigma) was used for drug treatments.

## Plasmids

For the CRISPR-Cas9 systems to knock out target genes, guide RNA sequences were designed by the E-CRISP website [22] (<http://www.e-crisp.org/E-CRISP/>), and the designed DNA fragments were ligated into *Bpi*I-digested pX330-EGFP. All the primers used in this study are listed in [S1 Table](#). The *SLC35B2*, *TPST1*, and *TPST2* cDNA fragments were amplified from human cDNA and cloned into the retroviral vector pLIB2-Hyg to generate pLIB2-Hyg-*SLC35B2*, *TPST1* or *TPST2*. The DNA fragment coding mEGFP-FLAG-CD55 was digested with *Eco*RI and *Not*I and cloned into pPB-FRT-PGKp-BSD to generate the pPB-FRT-PGKp-BSD-mEGFP-FLAG-CD55 plasmids as previously described [20]. The misfolded mutant of CD55 (C81A) was constructed by site-direct mutation. pPB-FRT-PGKp-BSD-mEGFP--MYC-CD55 WT or C81A was constructed by infusion. A 3×FLAG-CD55(C81A) DNA fragment was amplified from pPB-FRT-EGFP-FLAG-CD55(C81A) by PCR. The 3×FLAG-CD55 (C81A) fragment was then digested with *Sal*I and *Not*I and cloned into pPB-FRT-EGFP, generating pPB-FRT-EGFP-3FLAG-CD55(C81A).

## Establishment of knockout cell lines

To generate gene knockout cell lines, HEK293 cells stably expressing EGFP-FLAG-CD55 (C81A) or HEK293 cells were transiently transfected with pX330-EGFP plasmids bearing the target sequences. Three days after transfection, cells with EGFP were sorted by a S3e cell sorter (Bio-Rad). The collected cells were cultured for 8 days and subjected to limiting dilution to obtain clonal KO cells. A clone that had no wild-type allele was picked up. DNA sequences were analyzed by the Sanger method. *SLC35B2*-KO cell lines were established from both HEK293 cells and HEK293 cells stably expressing EGFP-FLAG-CD55 (C81A). The details of KO cell line are listed in [S2 Table](#).

## A genetic screen using GeCKO library

HEK293T cells ( $6.5 \times 10^6$  cells per 10-cm dish) were seeded in  $2 \times 10$ -cm dishes and incubated for 12–16 h. The plasmid mixture contained pMD2.G (4.5 μg), psPAX2 (6.7 μg), GeCKO-lib A (4.5 μg), GeCKO-lib B (4.5 μg) (pMD2.G: psPAX2: GeCKO-lib A: GeCKO-lib B = 1:1.5:1:1) were transfected into HEK293T cells. Twelve hours after transfection, the medium was replaced with prewarmed DMEM containing 10% FBS. After 24, 48, and 72 h of changing the medium, the supernatant containing lentiviral vectors was collected, combined, and stocked at 4°C. The lentiviral supernatant was filtered through a 0.45 μm PVDF filter. After filtration, the supernatant was quickly frozen in liquid nitrogen and stored at -80°C until use.

For screening, HEK293 cells stably expressing EGFP-FLAG-CD55 (C81A) were used as parental cells. Cells ( $3.5\text{--}4 \times 10^6$  cells per 15-cm dish; total 6 dishes) were seeded and cultured for 36 h. Then, 500 μl of lentiviral supernatant was added into each 15-cm dish (MOI was pre-calculated as 0.3) and incubated for a half day, and prewarmed fresh medium was changed. After 12 h of culture, the cells were harvested and selected with puromycin. Cells were maintained in medium containing puromycin and cultured in  $12 \times 15$ -cm dishes. Two dishes were directly harvested for the non-screening control, the other 10 dishes were stained with the anti-FLAG antibody and PE-conjugated goat anti-mouse IgG, and cells stained with the anti-

FLAG antibody were sorted by the S3e cell sorter. The cells that were highly stained with the anti-FLAG antibody were enriched three times.

### Determination of sgRNA sequences

Genomic DNA was isolated from  $3 \times 10^7$  cells, either non-selected control or cells after sorting, using the Wizard Genomic DNA Purification Kit (Promega) according to the manufacturer's protocol. After purification, the genomic DNAs were used as templates for PCR amplification, and GeCKO-F2 (5' - ATCATGCTTAGCTTTATATATCTTGTGGAAAGGACGAAACACC - 3') and GeCKO-R (5' - CCGACTCGGTGCCACTTTTTCAA - 3') were used as forward and reverse primers. After purification, the amplicons were analyzed by Illumina HiSeq. Deep sequencing raw data were processed for sgRNA counting using Python scripts. These sgRNA sequences were mapped to the sequences of the Human GeCKO v2 sgRNA library, and the total number of sgRNA counts was obtained by using the MAGeCK workflow [23]. The robust rank aggregation (RRA) values and p-values were determined using the MAGeCK algorithm.

### Flow cytometric analysis

HEK293 cells were transfected with pME-EGFP-FLAG-CD55 (C81A) by Lipofectamine 2000 (Thermo Fisher Scientific). Thirty-six hours after transfection, cells were treated with 50 mM NaClO<sub>3</sub> for 36 h. Cells ( $10^6$ ) were harvested with 2 mM EDTA diluted in D-PBS. After being washed with PBS, the cells were stained with anti-FLAG (M2; Sigma-Aldrich) (10 µg/ml) for 25 min on ice and then washed two times with cold FACS buffer (PBS containing 1% BSA and 0.1% NaN<sub>3</sub>). Subsequently, the cells were incubated with PE-conjugated goat anti-mouse IgG as the secondary antibody for 25 min on ice, washed two times with FACS buffer and then analyzed with an Accuri C6 instrument (BD). The data were analyzed using FlowJo (BD).

### Immunofluorescence analysis

To detect the subcellular localization of misfolded CD55 (EGFP-FLAG-CD55 (C81A)), HEK293 and its KO derivative cells stably expressing EGFP-FLAG-CD55 (C81A) were used. For expression of mRFP-KDEL, HEK293 cells stably expressing EGFP-FLAG-CD55 (C81A) were transfected with pME-Zeo-mRFP-KDEL. Then, 36 h after transfection, cells were replated onto glass coverslips pretreated with 1% gelatin and cultured for another 2 days. Subsequently, the cells were washed with PBS, fixed and permeabilized with -20°C methanol for 5 min at 4°C before being blocked with PBS containing 5% FCS (blocking buffer) for 1 h. The cells were incubated with mouse anti-calnexin (M178-3; MBL) as the primary antibody diluted in blocking buffer for 1 h. After washing twice with PBS, the cells were incubated with an F(ab')<sub>2</sub>-goat anti-mouse IgG (H+L) cross-adsorbed secondary antibody, Alexa Fluor 555 diluted in blocking buffer for 1 h, after which the cells were gently washed with PBS twice. The coverslips were mounted onto slides using a mounting solution containing DAPI for 5 min. The cells were visualized using a confocal microscope (C2si; Nikon) with a CFI Plan Apochromat VC oil objective lens (100× magnification and 1.4 NA).

## Results

### Genome-wide CRISPR-Cas9 knockout screening identified mutations in sulfo-modification that increase anti-FLAG staining on the plasma membrane

Under steady states, the majority of misfolded GPI-APs are retained in the ER, but fractions of them constantly reach the plasma membrane before going to the lysosome for degradation.

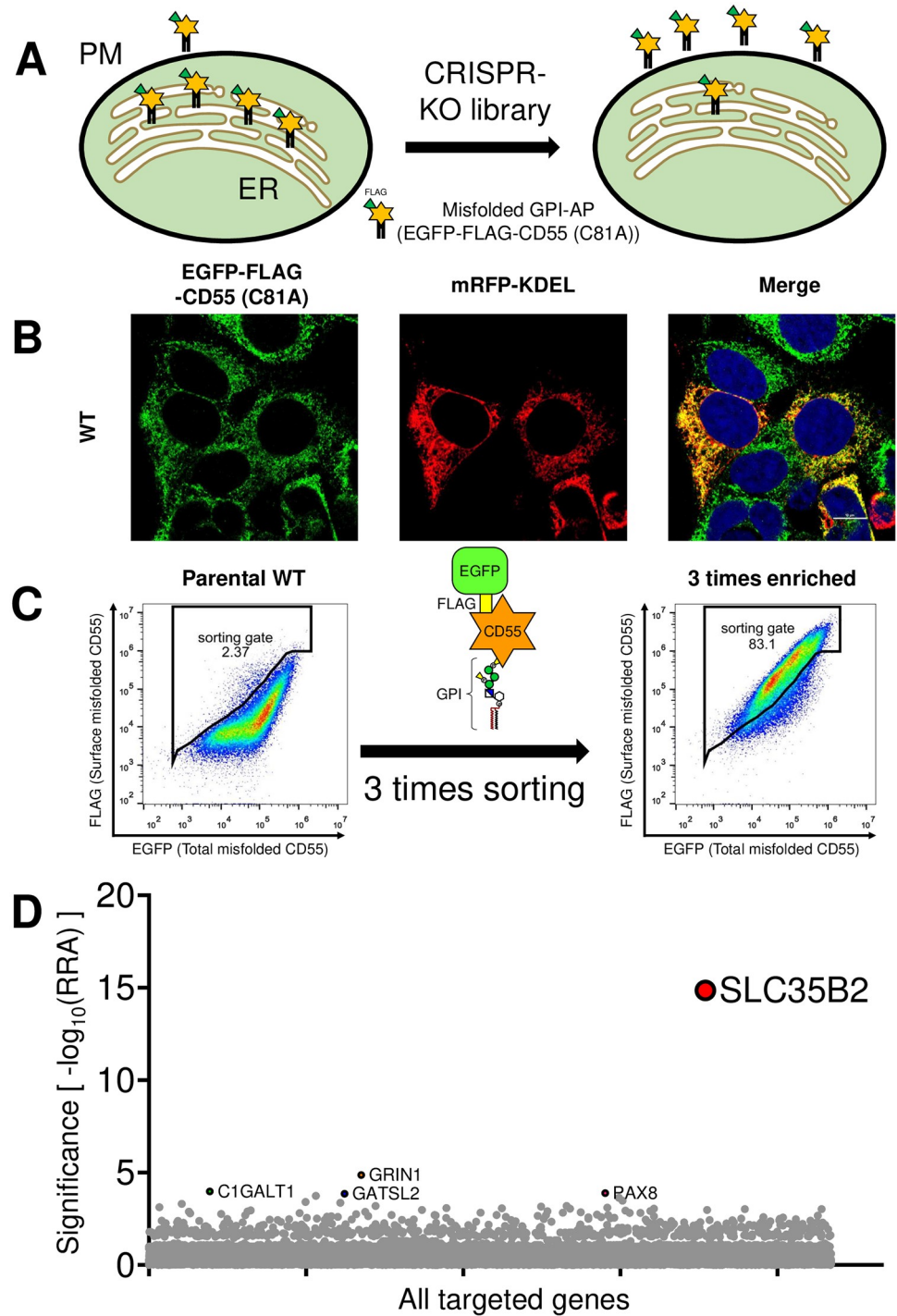
Under the microscope, the majority of misfolded prions (PrP<sup>\*</sup>) are detected in the ER [17], but proportions of PrP<sup>\*</sup> [18], CD55 (C81A) and CD59 (C94S) [19] are detected on the plasma membrane. Based on the data, we tried to identify factors that are involved in the retention of misfolded GPI-APs in the ER using the genome-scale CRISPR-Cas9 knockout (GeCKO) library [21] (Fig 1A). HEK293 cells stably expressing EGFP-FLAG-CD55 (C81A) were used as the parental cells. EGFP-FLAG-CD55 (C81A) was mainly localized in the ER (Fig 1B) but was also weakly detected on the plasma membrane by the anti-FLAG antibody (Fig 1C, left). The fluorescence derived from EGFP indicates the total level of EGFP-FLAG-CD55 (C81A), while the anti-FLAG staining level indicates the cell surface level. After mutagenesis by the GeCKO library, cells that were highly stained with the anti-FLAG antibody were enriched 3 times (Fig 1C, right). After extraction of genomic DNA from enriched cells and non-selected cells, target guide RNAs in the cells were determined by deep sequencing. *SLC35B2*, which encodes 3'-phosphoadenosine-5'-phosphosulfate transporter 1 [24, 25], was highly enriched in the screening (Fig 1D). 3'-Phosphoadenosine-5'-phosphosulfate (PAPS) is a substrate utilized for various sulfo-modifications. The function of *SLC35B2* is to transport PAPS from the cytosol into the Golgi lumen, where sulfo-modification is carried out. These results suggest that deletion of sulfation in the Golgi increases the detection of EGFP-FLAG-CD55 (C81A) on the cell surface.

To confirm whether sulfation affects the detection of EGFP-FLAG-CD55 (C81A) on the cell surface, cells were treated with NaClO<sub>3</sub>, which is an inhibitor of ATP-sulfurylase and the first enzyme in the biosynthesis pathway of PAPS [26, 27] (Fig 2A). By treating HEK293 cells stably expressing EGFP-FLAG-CD55 (C81A) with different concentrations of NaClO<sub>3</sub> for 48 h, anti-FLAG staining on the cell surface was increased. A higher concentration of NaClO<sub>3</sub> increased the staining (Fig 2B). To analyze whether this phenomenon is observed in another misfolded GPI-AP, HEK293 cells stably expressing EGFP-FLAG-CD59 (C94S) were treated with 50 mM NaClO<sub>3</sub> and stained with the anti-FLAG antibody. Similar to EGFP-FLAG-CD55 (C81A), FLAG staining of EGFP-FLAG-CD59 (C94S) was increased by treatment with NaClO<sub>3</sub> (Fig 2C).

### TPST2-mediated tyrosine sulfation mainly affects the FLAG staining

We next knocked out the *SLC35B2* gene in HEK293 cells stably expressing EGFP-FLAG-CD55 (C81A). Surface FLAG staining in *SLC35B2*-knockout (KO) cells was analyzed by flow cytometry. Compared to the parental WT cells, FLAG staining was clearly increased in *SLC35B2*-KO cells, confirming the results of CRISPR-KO screening (Fig 3). The increased staining in *SLC35B2*-KO cells was normalized by rescuing *SLC35B2* expression.

In the Golgi, proteins and glycans are sulfated. Protein sulfation occurs on the tyrosine residue of proteins mediated by tyrosyl protein sulfotransferase 1 or 2 (TPST1 or TPST2) [5, 6, 28]. Various glycans, including N-glycans, mucin-type O-glycans, and glycosaminoglycans, receive sulfo-modifications [29], which are mediated by sulfotransferases. For example, *CHST8* and *CHST9* transfer sulfate to position 4 of N-acetylgalactosamine (GalNAc) residues on N,N'-diacetyl-lactosamine (LacdiNAc) structures in both N-glycans and O-glycans [30, 31]. To clarify which sulfation affects the staining of EGFP-FLAG-CD55 (C81A) on the cell surface, we constructed *TPST1* and *TPST2* double KO (*TPST1&2*-DKO) and *CHST8* and *CHST9* double KO (*CHST8&9*-DKO) cells based on HEK293 cells stably expressing EGFP-FLAG-CD55 (C81A). FLAG staining in *TPST1&2*-DKO cells, but not *CHST8&9*-DKO cells, was increased, similar to that in *SLC35B2*-KO cells (Fig 3), suggesting that the removal of sulfation on the tyrosine residue is important for cell surface staining. When *TPST1&2*-DKO cells were rescued by transfection with *TPST1*, the phenotype was only partially restored. On the other hand, FLAG staining was strongly decreased by the overexpression of *TPST2* (Fig 3),



**Fig 1. A CRISPR-based genetic screen to identify genes involved in the surface detection of FLAG-tagged misfolded GPI-APs.** A. Scheme of CRISPR screening. Under normal conditions, the majority of misfolded GPI-APs are retained in the ER, with only a small fraction of them on the plasma membrane (PM) (left). After mutagenesis using the CRISPR KO library, cells in which misfolded GPI-APs are expressed on the PM were enriched using the cell sorter (right). For a model misfolded GPI-AP, EGFP-FLAG-CD55 (C81A) was used. A FLAG-tag was utilized for the detection. B. Localization of misfolded EGFP-FLAG-CD55 (C81A). An ER marker, mRFP-KDEL, was transiently transfected into HEK293 WT cells stably expressing EGFP-FLAG-CD55 (C81A). The fluorescence of EGFP was detected to analyze the localization of EGFP-FLAG-CD55 (C81A). Scale bar, 10  $\mu$ m. C. Flow cytometric analysis of parental HEK293 WT cells stably expressing EGFP-FLAG-CD55 (C81A) (left) and cells after enrichment 3 times using a cell sorter (right). Cells were harvested and stained with the anti-FLAG antibody. x-axis, fluorescence intensity of

EGFP in cells (total EGFP-FLAG-CD55 (C81A)); y-axis, fluorescence intensity of cells stained with the anti-FLAG antibody followed by PE-conjugated anti-mouse IgG (surface EGFP-FLAG-CD55 (C81A)). D. Gene scores in unsorted HEK293 cells stably expressing EGFP-FLAG-CD55 (C81A) cells versus cells enriched 3 times by cell sorting. Five top-ranking protein-coding genes are shown. Bubble size shows the number of active sgRNAs per gene.

<https://doi.org/10.1371/journal.pone.0250805.g001>

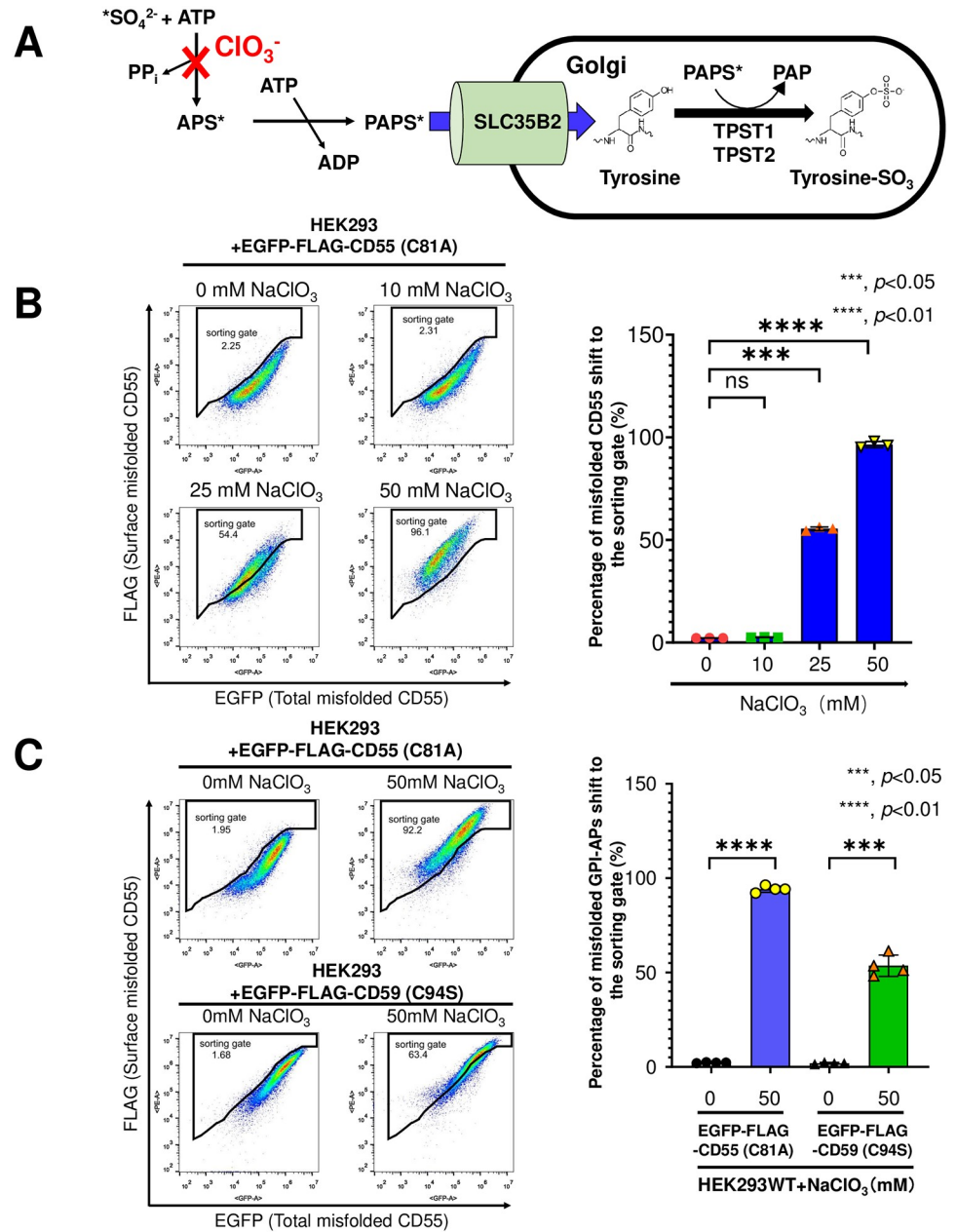
indicating that TPST2 plays a major role in transferring sulfate to the tyrosine residue to show the phenotype.

### Tyrosine sulfation on the FLAG-tag affects anti-FLAG antibody reactivity

Our initial purpose of the genetic screening was to identify factors involved in the retention of misfolded GPI-APs in the ER. Since FLAG staining on the cell surface was increased by KO of *SLC35B2* or *TPST1*, we next analyzed whether this phenomenon occurred due to changes in the localization of misfolded GPI-APs from the ER to the plasma membrane. The localization of EGFP-FLAG-CD55 (C81A) was detected in *SLC35B2*-KO cells and *TPST1*&2-DKO cells using confocal microscopy. Contrary to our expectation, the majority of EGFP signals derived from EGFP-FLAG-CD55 (C81A) were detected in the ER, similar to that in WT cells (Fig 4A). When the cells were stained by M2 anti-FLAG antibody, signals from anti-FLAG antibody were detected in the ER in WT cells (Fig 4B). On the other hand, in *SLC35B2*-KO cells, fractions of signals from anti-FLAG antibody were detected on the cell surface as well as ER region. EGFP signals on the cell surface were also changed in *SLC35B2*-KO cells, when the cells were stained with anti-FLAG antibody (Fig 4B). However, it seems to be an artifact caused by crosslinking of EGFP-FLAG-CD55 (C81A) using anti-FLAG antibody, since EGFP signals were dispersed and not obviously detected on the cell surface in both WT and *SLC35B2*-KO cells without anti-FLAG antibody. The difference in signals between EGFP and FLAG raises the possibility that a tyrosine residue on a FLAG-tag is sulfated, causing a reduction in antibody reactivity.

To confirm this possibility, a FLAG tag on EGFP-FLAG-CD55 was replaced with a MYC tag. EGFP-FLAG-CD55 (C81A) or EGFP-MYC-CD55 (C81A) was transiently transfected into wild-type and *SLC35B2*-KO HEK293 cells. In *SLC35B2*-KO cells expressing EGFP-FLAG-CD55 (C81A), surface staining by the anti-FLAG antibody was increased compared with WT cells (Fig 5A, left, Fig 5B, left). In contrast, MYC staining of *SLC35B2*-KO cells expressing EGFP-MYC-CD55 (C81A) was not changed compared with that of wild-type cells (Fig 5A, right, Fig 5B, right). We further constructed 3×FLAG tagged CD55 (C81A) (EGFP-3FLAG-CD55 (C81A)) to analyze the staining. Similar to EGFP-FLAG-CD55 (C81A), FLAG staining of EGFP-3FLAG-CD55 (C81A) on the cell surface was increased in *SLC35B2*-KO cells (S1A Fig). These results suggest that the phenomena observed in *SLC35B2*-KO cells were specific to cells expressing FLAG-tagged misfolded GPI-APs. Based on the amino acid sequence of the FLAG-tag and previous reports [1, 2], it is reasonable that tyrosine sulfation occurs on the FLAG-tag, which affects antibody reactivity.

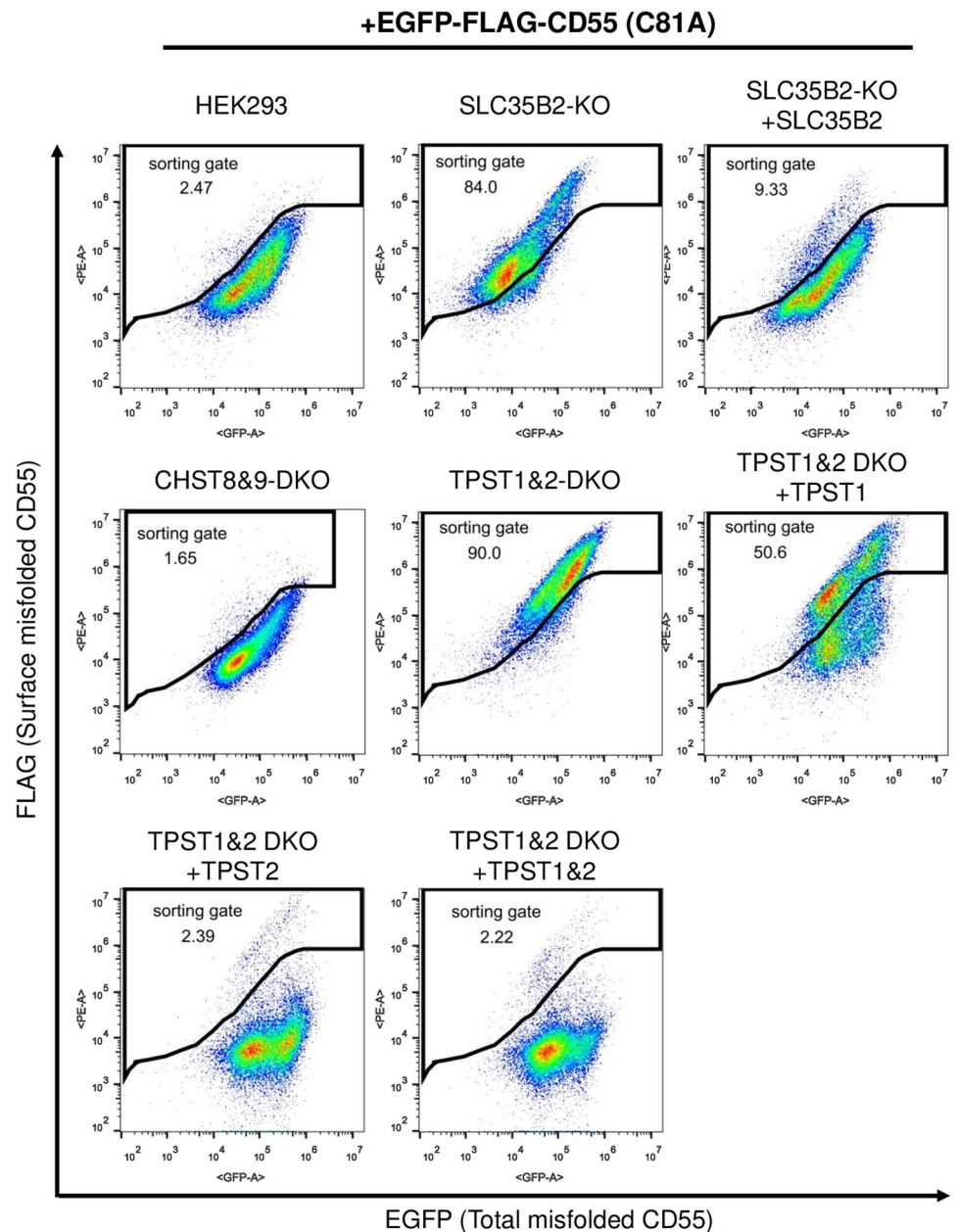
In all the experiments in this study, we used the M2 anti-FLAG antibody, which is most widely and frequently used to detect the FLAG-tagged proteins. To check the specificity of the phenomena observed in M2 anti-FLAG antibody, different anti-FLAG antibodies (monoclonal from Transgen (HT201-01) and polyclonal from Proteintech (20543-1-AP)) were used for FACS analysis (S1B Fig). The monoclonal anti-FLAG antibody from Transgen showed no obvious difference between WT and *SLC35B2*-KO cells. Compared with the staining by M2 anti-FLAG, FLAG was highly stained regardless in WT and *SLC35B2*-KO cells. On the other hand, the polyclonal antibody from Proteintech showed similar staining patterns with M2



**Fig 2. Defects in sulfo-modifications increase anti-FLAG staining on the cell surface.** A. SLC35B2 is the major transporter of PAPS, which is a substrate donor of sulfo-modifications, from the cytosol to the Golgi. TPST1 and TPST2 act as tyrosyl protein sulfotransferases that add sulfate to the tyrosine residues of proteins. The PAPS biosynthesis is inhibited by  $ClO_3^-$ , a sulfate molecule utilized for sulfation. B. HEK293 WT cells stably expressing EGFP-FLAG-CD55 (C81A) were treated with 0 mM, 10 mM, 25 mM, and 50 mM  $NaClO_3$  for 48 h. The surface expression of EGFP-FLAG-CD55 (C81A) was analyzed by flow cytometry as described in Fig 1C (left). The percentages of the positive gate are presented as the means  $\pm$  SD from three independent experiments. P-values (two-tailed, student's t-test) are shown (right). C. HEK293 WT cells stably expressing EGFP-FLAG-CD55 (C81A) or EGFP-FLAG-CD59 (C94S) were treated with 50 mM  $NaClO_3$  for 48 h. The surface expression of EGFP-FLAG-CD55 (C81A) and EGFP-FLAG-CD59 (C94S) was analyzed by flow cytometry as described in Fig 1C (left). The percentages of the positive gate are presented as the means  $\pm$  SD from four independent experiments. P-values (two-tailed, student's t-test) are shown (right).

<https://doi.org/10.1371/journal.pone.0250805.g002>



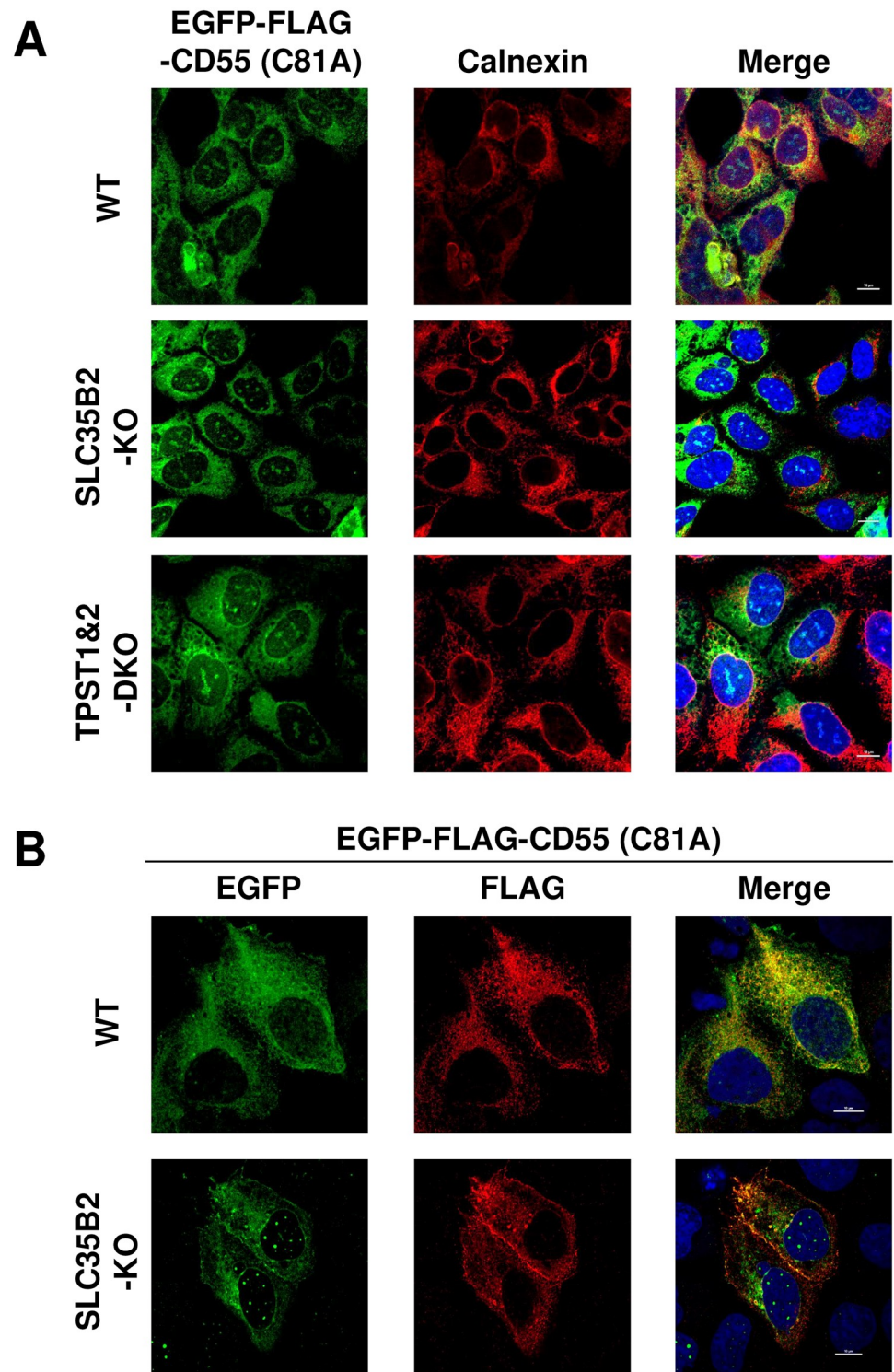


**Fig 3. TPST2-mediated tyrosine sulfation mainly affects FLAG staining.** Flow cytometric analysis of EGFP-FLAG-CD55 (C81A) in HEK293 WT, SLC35B2-KO, SLC35B2-KO stably expressing *SLC35B2*, TPST1&2-DKO, CHST8&9-DKO, TPST1&2-DKO rescued with *TPST1* and/or *TPST2*. The surface expression of EGFP-FLAG-CD55 (C81A) was analyzed by flow cytometry as described in Fig 1C.

<https://doi.org/10.1371/journal.pone.0250805.g003>

antibody in WT and SLC35B2-KO cells. These results suggest that some antibody against FLAG-tag is sensitive to the tyrosine-modification on the epitope.

We finally analyzed whether the FLAG modification specifically occurred in misfolded GPI-APs. EGFP-FLAG-CD55 (WT) and EGFP-MYC-CD55 (WT) were transiently expressed in wild-type and SLC35B2-KO cells, respectively. Both FLAG and MYC detection were almost



**Fig 4. Localization of misfolded GPI-APs are not changed by impairment of tyrosine sulfation.** A. Localization of EGFP-FLAG-CD55 (C81A) in HEK293 WT, SLC35B2-KO and TPST1&2-DKO cells. Cells stably expressing EGFP-FLAG-CD55 (C81A) were fixed and stained with an anti-calnexin antibody followed by an anti-mouse Alexa Fluor 555 to analyze ER localization. The fluorescence of EGFP was detected to analyze the localization of EGFP-FLAG-CD55 (C81A). Scale bar, 10  $\mu$ m. B. EGFP-FLAG-CD55 (C81A) in HEK293WT and SLC35B2-KO was stained by anti-FLAG antibody. Cells were transiently transfected with a plasmid expressing EGFP-FLAG-CD55 (C81A). Three days after transfection, cells were fixed with methanol. Anti-FLAG (Sigma, M2) antibody, followed by

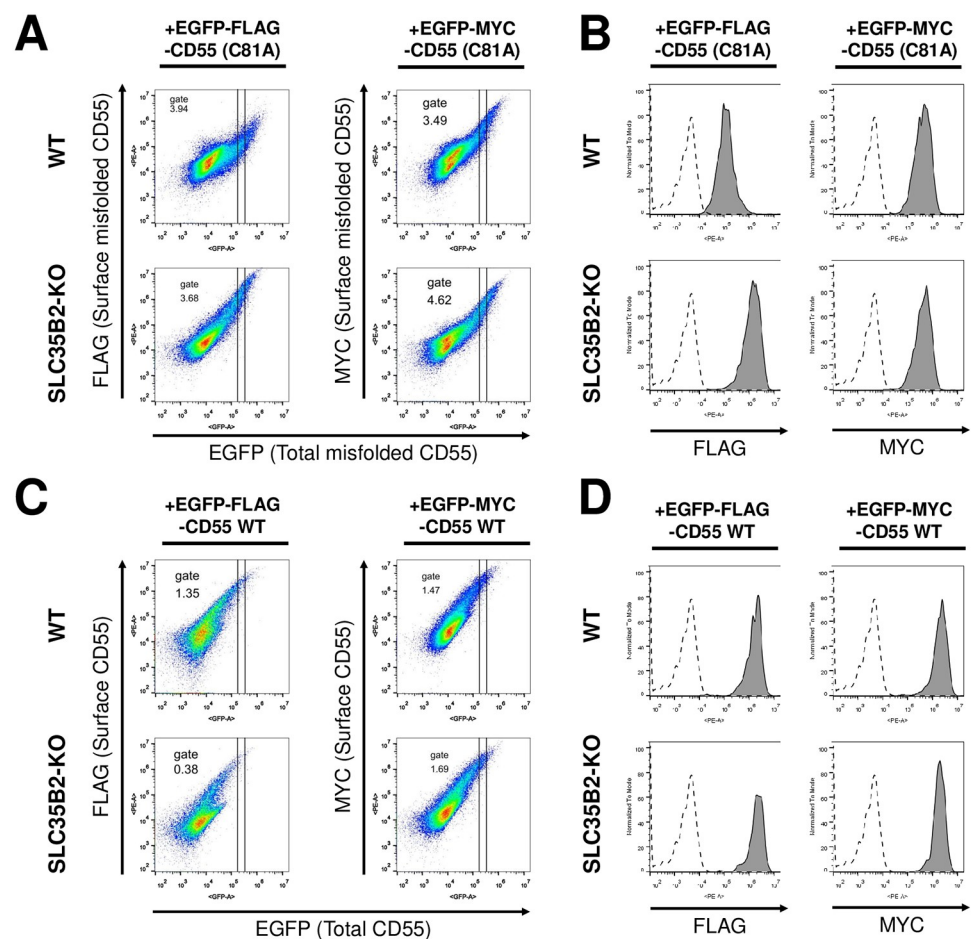
an anti-mouse-Alexa Fluor 555, were used for staining. The fluorescence derived from EGFP and FLAG was detected by confocal microscopy. Scale bar, 10  $\mu$ m.

<https://doi.org/10.1371/journal.pone.0250805.g004>

comparable between wild-type and SLC35B2-KO cells (Fig 5C and 5D), suggesting that FLAG sulfation preferentially occurred in misfolded EGFP-FLAG-CD55.

## Discussion

We performed a genetic screening to identify factors related to the plasma membrane expression of EGFP-FLAG-CD55 (C81A). After enrichment of mutant cells that showed high FLAG staining 3 times, the target genes enriched in mutant cells were determined. *SLC35B2*, encoding PAPS transporter 1, was identified as the gene responsible for the phenotype. The status of tyrosine sulfation by TPST2 changed the surface FLAG staining of cells expressing EGFP-FLAG-CD55 (C81A). However, microscopic analysis revealed that impaired tyrosine sulfation did not induce misfolded GPI-APs expressed from the ER to the plasma membrane. After



**Fig 5. Tyrosine sulfation on the FLAG-tag affects reactivity to the anti-FLAG antibody.** A-D. HEK293 WT and SLC35B2-KO cells were transiently transfected with EGFP-FLAG-CD55 (C81A) or EGFP-MYC-CD55 (C81A) (A and B) or EGFP-FLAG-CD55 WT or EGFP-MYC-CD55 WT (C and D). Three days after transfection, cells were harvested and analyzed with anti-FLAG or anti-MYC antibody as described in Fig 1C (A and C). The GFP-positive regions were gated, and the fluorescence intensities of FLAG or MYC staining were analyzed by flow cytometry (B and D). The results are representative of three independent experiments.

<https://doi.org/10.1371/journal.pone.0250805.g005>

replacement of the FLAG tag with the MYC tag on misfolded CD55, the increased staining phenomena disappeared. Our results suggest that the FLAG tag on misfolded CD55 is sulfated, reducing its reactivity to antibodies. We proved that the FLAG tag is not a good choice to quantify proteins in secretory pathways.

Tyrosine sulfation is a post-translational modification of secreted and transmembrane proteins that occurs in the trans-Golgi network [4, 5]. Membrane proteins, including receptors, which are vital for a variety of physiological and pathological pathways, are known to be modified with sulfate. GPCRs (G protein-coupled receptors) are one type of well-understood protein bearing this modification [32–34]. Tyrosine sulfation does not change the localization and structure of GPCRs, but lost tyrosine sulfation affects their function, especially their binding with ligands [9, 33, 35]. Previously, some papers showed that tyrosine on FLAG-tags can be modified with sulfate [1, 2]. This modification challenged the possibility of using FLAG-tag for certain experiments, especially targeted protein expression levels.

In addition to the misfolded GPI-APs in this study, it is reported that correctly folded FLAG-tagged proteins such as dopamine receptor 2 expressed in HEK293 cells and neuraminidase expressed in insect cells also affect the anti-FLAG detection [1, 2]. It is not clear why the FLAG-tag on some proteins, but not all, is sulfated. Interestingly, FLAG detection was not affected in EGFP-FLAG-CD55 (WT) cells, suggesting that FLAG modification preferentially occurs in misfolded EGFP-FLAG-CD55 (C81A) cells. Since chaperones, including calnexin, associate with misfolded GPI-APs in the ER and the late secretory pathway [18, 19], the intracellular retention time of misfolded GPI-APs would be longer than that of folded GPI-APs. The prolonged residence time of misfolded EGFP-FLAG-CD55 in the Golgi may increase the possibility of encountering and reacting with TPST2.

There are two PAPS transporters, PAPST1 encoded by *SLC35B2* and PAPST2 encoded by *SLC35B3*, in the human genome. In this study, KO of *SLC35B2* was sufficient for increasing FLAG detection. RNA-seq analysis revealed that the expression of *SLC35B2* (TPM  $\pm$  SD = 90.4  $\pm$  3.4) was higher than that of *SLC35B3* (TPM  $\pm$  SD = 18.2  $\pm$  2.1) in HEK293 cells (Huang et al, manuscript under revision). In addition, kinetic analysis showed that PAPST1 has a lower  $K_m$  value for PAPS than PAPST2 (0.8  $\mu$ M in PAPST1 and 2.2  $\mu$ M in PAPST2) [36], indicating that *SLC35B2* mainly contributes to the transport of PAPS into the Golgi in HEK293 cells. Besides, two distinct tyrosyl protein sulfotransferases, TPST1 and TPST2, are also encoded in the human genome. TPST1 and TPST2 show distinct pH optima, effects of magnesium supplementation, and substrate specificities [36]. In our study, TPST1 expression only partially restored the phenotypes in TPST1&2-DKO cells, whereas TPST2 strongly suppressed FLAG detection on the cell surface. These results suggest that the FLAG tag on EGFP-FLAG-CD55 (C81A) is sulfated by TPST2.

Mass spectrometric analysis is one of the most powerful tools for the detection of post-translational modifications, including phosphorylation, ubiquitination, glycosylation, methylation, acetylation, and sulfation [37, 38]. Tyrosine sulfation and tyrosine phosphorylation is hard to distinguish by mass spectrometry since they have almost same nominal mass at approximately 80 Da (sulfation: 79.9568 Da; phosphorylation: 79.9663 Da) [39]. However, tyrosine sulfation is less stable than tyrosine phosphorylation according to a study using MS/MS [37], which makes it difficult to detect. Although we tried to detect the sulfate modification on the FLAG-tag in EGFP-FLAG-CD55 (C81A) using mass spectrometry, we could not succeed in the detection. Recently, some anti-sulfotyrosine antibodies have been developed to detect tyrosine sulfation by ELISA, western blotting, and flow cytometry [40–42]. Currently, a commercially available anti-sulfotyrosine monoclonal antibody (called PSG2) was found to bind with sulfotyrosine residues in peptides and proteins independent of their sequence context [40]. The disadvantage is that the PSG2 antibody prefers to recognize sulfotyrosine in the

presence of Glu or Asp within  $\pm$  two residues of tyrosine [40]. To date, there is no direct evidence that the PSG2 antibody recognizes sulfotyrosine on a FLAG tag. It is worth developing a simple and high-throughput method for the detection and measurement of tyrosine sulfation.

## Supporting information

**S1 Fig. Detection of EGFP-FLAG-CD55 (C81A) using different anti-FLAG antibodies.**  
(PDF)

**S1 Table. Oligonucleotide primers used in this study.**  
(XLSX)

**S2 Table. Genotype of knock-out cell lines in this study.**  
(XLSX)

## Acknowledgments

We thank Drs Yi-Shi Liu, Ganglong Yang, Zijie Li, and Ning Wang for discussion.

## Author Contributions

**Conceptualization:** Xin-Yu Guo, Morihisa Fujita.

**Data curation:** Xin-Yu Guo, Morihisa Fujita.

**Formal analysis:** Xin-Yu Guo.

**Funding acquisition:** Xiao-Dong Gao, Morihisa Fujita.

**Investigation:** Xin-Yu Guo, Morihisa Fujita.

**Supervision:** Xiao-Dong Gao, Morihisa Fujita.

**Validation:** Xiao-Dong Gao, Morihisa Fujita.

**Visualization:** Xin-Yu Guo, Morihisa Fujita.

**Writing – original draft:** Xin-Yu Guo, Morihisa Fujita.

**Writing – review & editing:** Xiao-Dong Gao, Morihisa Fujita.

## References

1. Hunter MR, Grimsey NL, Glass M. Sulfation of the FLAG epitope is affected by co-expression of G protein-coupled receptors in a mammalian cell model. *Sci Rep.* 2016; 6(1):1–10. <https://doi.org/10.1038/s41598-016-0001-8> PMID: 28442746
2. Schmidt PM, Sparrow LG, Attwood RM, Xiao X, Adams TE, McKimm-Breschkin JL. Taking down the FLAG! How insect cell expression challenges an established tag-system. *PLoS One.* 2012; 7(6): e37779. <https://doi.org/10.1371/journal.pone.0037779> PMID: 22701579
3. Choe H, Farzan M. Tyrosine sulfation of HIV-1 coreceptors and other chemokine receptors. *Methods Enzymol.* 2009; 461:147–70. [https://doi.org/10.1016/S0076-6879\(09\)05407-X](https://doi.org/10.1016/S0076-6879(09)05407-X) PMID: 19480918
4. Yang Y-S, Wang C-C, Chen B-H, Hou Y-H, Hung K-S, Mao Y-C. Tyrosine sulfation as a protein post-translational modification. *Molecules.* 2015; 20(2):2138–64. <https://doi.org/10.3390/molecules20022138> PMID: 25635379
5. Stone MJ, Chuang S, Hou X, Shoham M, Zhu JZ. Tyrosine sulfation: an increasingly recognised post-translational modification of secreted proteins. *N Biotechnol.* 2009; 25(5):299–317. <https://doi.org/10.1016/j.nbt.2009.03.011> PMID: 19658209
6. Teramoto T, Fujikawa Y, Kawaguchi Y, Kurogi K, Soejima M, Adachi R, et al. Crystal structure of human tyrosylprotein sulfotransferase-2 reveals the mechanism of protein tyrosine sulfation reaction. *Nat Commun.* 2013; 4(1):1572. <https://doi.org/10.1038/ncomms2593> PMID: 23481380

7. Monigatti F, Hekking B, Steen H. Protein sulfation analysis—a primer. *Biochim Biophys Acta*. 2006; 1764(12):1904–13. <https://doi.org/10.1016/j.bbapap.2006.07.002> PMID: 16952486
8. Monigatti F, Gasteiger E, Bairoch A, Jung E. The Sulfinator: predicting tyrosine sulfation sites in protein sequences. *Bioinformatics*. 2002; 18(5):769–70. <https://doi.org/10.1093/bioinformatics/18.5.769> PMID: 12050077
9. Park RJ, Wang T, Koundakjian D, Hultquist JF, Lamothe-Molina P, Monel B, et al. A genome-wide CRISPR screen identifies a restricted set of HIV host dependency factors. *Nat Genet*. 2017; 49(2):193–203. <https://doi.org/10.1038/ng.3741> PMID: 27992415
10. Tiede A, Bastisch I, Schubert J, Orlean P, Schmidt RE. Biosynthesis of glycosylphosphatidylinositols in mammals and unicellular microbes. *Biol Chem*. 1999; 380(5):503–23. <https://doi.org/10.1515/BC.1999.066> PMID: 10384957
11. Ikezawa H. Glycosylphosphatidylinositol (GPI)-anchored proteins. *Biol Pharm Bull*. 2002; 25(4):409–17. <https://doi.org/10.1248/bpb.25.409> PMID: 11995915
12. McConville MJ, Menon AK. Recent developments in the cell biology and biochemistry of glycosylphosphatidylinositol lipids (review). *Mol Membr Biol*. 2000; 17(1):1–16. <https://doi.org/10.1080/096876800294443> PMID: 10824734
13. Sun Z, Brodsky JL. Protein quality control in the secretory pathway. *J Cell Biol*. 2019; 218(10):3171–87. <https://doi.org/10.1083/jcb.201906047> PMID: 31537714
14. Vembar SS, Brodsky JL. One step at a time: endoplasmic reticulum-associated degradation. *Nat Rev Mol Cell Biol*. 2008; 9(12):944–57. <https://doi.org/10.1038/nrm2546> PMID: 19002207
15. Hirayama H, Fujita M, Yoko-o T, Jigami Y. O-mannosylation is required for degradation of the endoplasmic reticulum-associated degradation substrate Gas1\**p* via the ubiquitin/proteasome pathway in *Saccharomyces cerevisiae*. *J Biochem*. 2008; 143(4):555–67. <https://doi.org/10.1093/jb/mvm249> PMID: 18182384
16. Sikorska N, Lemus L, Aguilera-Romero A, Manzano-Lopez J, Riezman H, Muniz M, et al. Limited ER quality control for GPI-anchored proteins. *J Cell Biol*. 2016; 213(6):693–704. <https://doi.org/10.1083/jcb.201602010> PMID: 27325793
17. Satpute-Krishnan P, Ajinkya M, Bhat S, Itakura E, Hegde RS, Lippincott-Schwartz J. ER stress-induced clearance of misfolded GPI-anchored proteins via the secretory pathway. *Cell*. 2014; 158(3):522–33. <https://doi.org/10.1016/j.cell.2014.06.026> PMID: 25083867
18. Zavodszky E, Hegde RS. Misfolded GPI-anchored proteins are escorted through the secretory pathway by ER-derived factors. *Elife*. 2019; 8:e46740. <https://doi.org/10.7554/eLife.46740> PMID: 31094677
19. Guo X-Y, Liu Y-S, Gao X-D, Kinoshita T, Fujita M. Calnexin mediates the maturation of GPI-anchors through ER retention. *J Biol Chem*. 2020; 295(48):16393–410. <https://doi.org/10.1074/jbc.RA120.015577> PMID: 32967966
20. Liu Y-S, Guo X-Y, Hirata T, Rong Y, Motooka D, Kitajima T, et al. N-Glycan-dependent protein folding and endoplasmic reticulum retention regulate GPI-anchor processing. *J Cell Biol*. 2018; 217(2):585–99. <https://doi.org/10.1083/jcb.201706135> PMID: 29255114
21. Joung J, Konermann S, Gootenberg JS, Abudayyeh OO, Platt RJ, Brigham MD, et al. Genome-scale CRISPR-Cas9 knockout and transcriptional activation screening. *Nat Protoc*. 2017; 12(4):828–63. <https://doi.org/10.1038/nprot.2017.016> PMID: 28333914
22. Heigwer F, Kerr G, Boutros M. E-CRISP: fast CRISPR target site identification. *Nat Methods*. 2014; 11(2):122–3. <https://doi.org/10.1038/nmeth.2812> PMID: 24481216
23. Li W, Koster J, Xu H, Chen CH, Xiao T, Liu JS, et al. Quality control, modeling, and visualization of CRISPR screens with MAGeCK-VISPR. *Genome Biol*. 2015; 16(1):281.
24. Ozeran JD, Westley J, Schwartz NB. Identification and partial purification of PAPS translocase. *Biochemistry*. 1996; 35(12):3695–703. <https://doi.org/10.1021/bi951303m> PMID: 8619989
25. Kamiyama S, Suda T, Ueda R, Suzuki M, Okubo R, Kikuchi N, et al. Molecular cloning and identification of 3'-phosphoadenosine 5'-phosphosulfate transporter. *J Biol Chem*. 2003; 278(28):25958–63. <https://doi.org/10.1074/jbc.M302439200> PMID: 12716889
26. Baeuerle PA, Huttner WBJB. Chlorate—a potent inhibitor of protein sulfation in intact cells. *Biochem Biophys Res Commun*. 1986; 141(2):870–7. [https://doi.org/10.1016/s0006-291x\(86\)80253-4](https://doi.org/10.1016/s0006-291x(86)80253-4) PMID: 3026396
27. Lemansky P, Hasilik AJJocs. Chondroitin sulfate is involved in lysosomal transport of lysozyme in U937 cells. *J Cell Sci Ther*. 2001; 114(2):345–52. PMID: 11148136
28. Niehrs C, Beißwanger R, Huttner WBJB. Protein tyrosine sulfation, 1993—an update. *Chem-Biol Interact*. 1994; 92(1–3):257–71. [https://doi.org/10.1016/0009-2797\(94\)90068-x](https://doi.org/10.1016/0009-2797(94)90068-x) PMID: 8033259

29. Khoo K-H, Yu S-Y. Mass spectrometric analysis of sulfated N- and O-glycans. *Methods Enzymol.* 478: Elsevier; 2010. p. 3–26. [https://doi.org/10.1016/S0076-6879\(10\)78001-0](https://doi.org/10.1016/S0076-6879(10)78001-0) PMID: 20816473
30. Xia G, Evers MR, Kang H-G, Schachner M, Baenziger JUJJoBC. Molecular Cloning and Expression of the Pituitary Glycoprotein Hormone N-Acetylgalactosamine-4-O-sulfotransferase. *J Biol Chem.* 2000; 275(49):38402–9. <https://doi.org/10.1074/jbc.M007821200> PMID: 10988300
31. Hiraoka N, Misra A, Belot F, Hindsgaul O, Fukuda M. Molecular cloning and expression of two distinct human N-acetylgalactosamine 4-O-sulfotransferases that transfer sulfate to GalNAc beta 1—>4GlcNAc beta 1—>R in both N- and O-glycans. *Glycobiology.* 2001; 11(6):495–504. <https://doi.org/10.1093/glycob/11.6.495> PMID: 11445554
32. Goth CK, Petaja-Repo UE, Rosenkilde MM. G Protein-Coupled Receptors in the Sweet Spot: Glycosylation and other Post-translational Modifications. *ACS Pharmacol Transl Sci.* 2020; 3(2):237–45. <https://doi.org/10.1021/acsptsci.0c00016> PMID: 32296765
33. Costagliola S, Panneels V, Bonomi M, Koch J, Many M-C, Smits G, et al. Tyrosine sulfation is required for agonist recognition by glycoprotein hormone receptors. *EMBO J.* 2002; 21(4):504–13. <https://doi.org/10.1093/emboj/21.4.504> PMID: 11847099
34. Ludeman JP, Stone MJ. The structural role of receptor tyrosine sulfation in chemokine recognition. *Br J Pharmacol.* 2014; 171(5):1167–79. <https://doi.org/10.1111/bph.12455> PMID: 24116930
35. Farzan M, Babcock GJ, Vasilieva N, Wright PL, Kiprilov E, Mirzabekov T, et al. The role of post-translational modifications of the CXCR4 amino terminus in stromal-derived factor 1 $\alpha$  association and HIV-1 entry. *J Biol Chem.* 2002; 277(33):29484–9. <https://doi.org/10.1074/jbc.M203361200> PMID: 12034737
36. Mishiro E, Sakakibara Y, Liu MC, Suiko M. Differential enzymatic characteristics and tissue-specific expression of human TPST-1 and TPST-2. *J Biochem.* 2006; 140(5):731–7. <https://doi.org/10.1093/jb/mvj206> PMID: 17028309
37. Mann M, Jensen ON. Proteomic analysis of post-translational modifications. *Nat Biotechnol.* 2003; 21(3):255–61. <https://doi.org/10.1038/nbt0303-255> PMID: 12610572
38. Medzihradszky KF. Peptide sequence analysis. *Methods Enzymol.* 2005; 402:209–44. [https://doi.org/10.1016/S0076-6879\(05\)02007-0](https://doi.org/10.1016/S0076-6879(05)02007-0) PMID: 16401511
39. Medzihradszky KF, Darula Z, Perlson E, Fainzilber M, Chalkley RJ, Ball H, et al. O-sulfonation of serine and threonine: mass spectrometric detection and characterization of a new posttranslational modification in diverse proteins throughout the eukaryotes. *Mol Cell Proteomics.* 2004; 3(5):429–40. <https://doi.org/10.1074/mcp.M300140-MCP200> PMID: 14752058
40. Hoffhines AJ, Damoc E, Bridges KG, Leary JA, Moore KL. Detection and purification of tyrosine-sulfated proteins using a novel anti-sulfotyrosine monoclonal antibody. *J Biol Chem.* 2006; 281(49):37877–87. <https://doi.org/10.1074/jbc.M609398200> PMID: 17046811
41. Nishimura Y, Wakita T, Shimizu H. Tyrosine sulfation of the amino terminus of PSGL-1 is critical for enterovirus 71 infection. *PLoS Pathog.* 2010; 6(11):e1001174. <https://doi.org/10.1371/journal.ppat.1001174> PMID: 21079683
42. Xu J, Deng X, Tang M, Li L, Xiao L, Yang L, et al. Tyrosylprotein sulfotransferase-1 and tyrosine sulfation of chemokine receptor 4 are induced by Epstein-Barr virus encoded latent membrane protein 1 and associated with the metastatic potential of human nasopharyngeal carcinoma. *PLoS One.* 2013; 8(3):e56114. <https://doi.org/10.1371/journal.pone.0056114> PMID: 23472069