

Prognostic impact of acute pulmonary triggers in patients with takotsubo syndrome: new insights from the International Takotsubo Registry

Ken Kato¹, Victoria L. Cammann¹, L. Christian Napp², Konrad A. Szawan¹, Jozef Micek¹, Sara Dreiding¹, Rena A. Levinson¹, Vanya Petkova¹, Michael Würdinger¹, Alexandru Patrascu¹, Rafael Sumalinog¹, Sebastiano Gili³, Christian F. Clarenbach⁴, Malcolm Kohler⁴, Manfred Wischnewsky⁵, Rodolfo Citro⁶, Carmine Vecchione⁶, Eduardo Bossone⁷, Michael Neuhaus⁸, Jennifer Franke⁹, Benjamin Meder⁹, Milosz Jaguszewski¹⁰, Michel Noutsias¹¹, Maïke Knorr¹², Susanne Heiner¹², Fabrizio D'Ascenzo¹³, Wolfgang Dichtl¹⁴, Christof Burgdorf¹⁵, Behrouz Kherad¹⁶, Carsten Tschöpe¹⁶, Annahita Sarcon¹⁷, Jerold Shinbane¹⁸, Lawrence Rajan¹⁹, Guido Michels²⁰, Roman Pfister²⁰, Alessandro Cuneo²¹, Claudius Jacobshagen²², Mahir Karakas^{23,24}, Wolfgang Koenig^{25,26}, Alexander Pott²⁷, Philippe Meyer²⁸, Marco Roffi²⁸, Adrian Banning²⁹, Mathias Wolfrum³⁰, Florim Cuculi³⁰, Richard Kobza³⁰, Thomas A. Fischer³¹, Tuija Vasankari³², K.E. Juhani Airaksinen³², Monika Budnik³³, Rafal Dworakowski³⁴, Philip McCarthy³⁴, Christoph Kaiser³⁵, Stefan Osswald³⁵, Leonarda Galiuto³⁶, Christina Chan³⁷, Paul Bridgman³⁷, Daniel Beug^{38,39}, Clément Delmas⁴⁰, Olivier Lairez⁴⁰, Ekaterina Gilyarova⁴¹, Alexandra Shilova⁴¹, Mikhail Gilyarov⁴¹, Ibrahim El-Battrawy^{42,43}, Ibrahim Akin^{42,43}, Martin Kozel⁴⁴, Petr Tousek⁴⁴, David E. Winchester⁴⁵, Jan Galuszka⁴⁶, Christian Ukena⁴⁷, Gregor Pogljajen⁴⁸, Pedro Carrilho-Ferreira⁴⁹, Christian Hauck⁵⁰, Carla Paolini⁵¹, Claudio Bilato⁵¹, Masanori Sano⁵², Iwao Ishibashi⁵², Masayuki Takahara⁵³, Toshiharu Himi⁵³, Yoshio Kobayashi⁵⁴, Abhiram Prasad⁵⁵, Charanjit S. Rihal⁵⁵, Kan Liu⁵⁶, P. Christian Schulze⁵⁷, Matteo Bianco⁵⁸, Lucas Jörg⁵⁹, Hans Rickli⁵⁹, Gonçalo Pestana⁶⁰, Thanh H. Nguyen⁶¹, Michael Böhm⁴⁷, Lars S. Maier⁵⁰, Fausto J. Pinto⁴⁹, Petr Widimský⁴⁴, Stephan B. Felix^{38,39}, Grzegorz Opolski³³, Ruediger C. Braun-Dullaeus⁶², Wolfgang Rottbauer²⁷, Gerd Hasenfuß²², Burkert M. Pieske¹⁶, Heribert Schunkert^{25,26}, Martin Borggrefe^{42,43}, Holger Thiele⁶³, Johann Bauersachs², Hugo A. Katus⁹, John D. Horowitz⁶¹, Carlo Di Mario⁶⁴, Thomas Münzel¹², Filippo Crea³⁶, Jeroen J. Bax⁶⁵, Thomas F. Lüscher^{66,67}, Frank Ruschitzka¹, Jelena R. Ghadri¹ and Christian Templin^{1*}

¹Department of Cardiology, University Heart Center, University Hospital of Zurich, Raemistrasse 100, Zurich, 8091, Switzerland; ²Department of Cardiology and Angiology, Hannover Medical School, Hannover, Germany; ³Centro Cardiologico Monzino, IRCCS, Milan, Italy; ⁴Pulmonary Division, University Hospital of Zurich, Zurich, Switzerland; ⁵FB Mathematics and Computer Science, University of Bremen, Bremen, Germany; ⁶Heart Department, University Hospital 'San Giovanni di Dio e Ruggi d'Aragona', Salerno, Italy; ⁷Division of Cardiology, Antonio Cardarelli Hospital, Naples, Italy; ⁸Department of Cardiology, Kantonsspital Frauenfeld, Frauenfeld, Switzerland; ⁹Department of Cardiology, Heidelberg University Hospital, Heidelberg, Germany; ¹⁰First Department of Cardiology, Medical University of Gdansk, Gdansk, Poland; ¹¹Department of Internal Medicine III, Division of Cardiology, Angiology and Intensive Medical Care, University Hospital Halle, Martin-Luther-University Halle-Wittenberg, Halle (Saale), Germany; ¹²Center for Cardiology, Cardiology 1, University Medical Center Mainz, Mainz, Germany; ¹³Division of Cardiology, Department of Medical Sciences, AOU Città della Salute e della Scienza, University of Turin, Turin, Italy; ¹⁴University Hospital for Internal Medicine III (Cardiology and Angiology), Medical University Innsbruck, Innsbruck, Austria; ¹⁵Heart and Vascular Centre Bad Bevensen, Bad Bevensen, Germany; ¹⁶Department of Cardiology, Charité, Campus Rudolf Virchow, Berlin, Germany; ¹⁷Section of Cardiac Electrophysiology, Department of Medicine, University of California-San Francisco, San Francisco, CA, USA; ¹⁸Division of Cardiovascular Medicine, Keck School of Medicine, University of Southern California, Los Angeles, CA, USA; ¹⁹TJ Health Partners Heart and Vascular, Glasgow, KY, USA; ²⁰Department of Internal Medicine III, Heart Center University of Cologne, Cologne, Germany; ²¹Krankenhaus 'Maria Hilf' Medizinische Klinik, Stadtlohn, Germany; ²²Clinic for Cardiology and Pneumology, Georg August University of Goettingen, Goettingen, Germany; ²³Department of General and Interventional Cardiology, University Heart Center Hamburg, Hamburg, Germany; ²⁴DZHK (German Centre for Cardiovascular Research), partner site Hamburg/Kiel/Luebeck, Hamburg, Germany; ²⁵Deutsches Herzzentrum München, Technische Universität München, Munich, Germany; ²⁶DZHK (German Centre for Cardiovascular Research), partner site Munich Heart Alliance, Munich, Germany; ²⁷Department of Internal Medicine II - Cardiology, University of Ulm, Medical Center, Ulm, Germany; ²⁸Service de Cardiologie, Hôpitaux Universitaires de Genève, Geneva, Switzerland; ²⁹Department of Cardiology, John Radcliffe Hospital, Oxford University Hospitals, Oxford, UK; ³⁰Department of Cardiology, Kantonsspital Lucerne, Lucerne, Switzerland; ³¹Department of Cardiology, Kantonsspital Winterthur, Winterthur, Switzerland; ³²Heart Center, Turku University Hospital, University of Turku, Turku, Finland; ³³Department of Cardiology, Medical University of Warsaw, Warsaw, Poland; ³⁴Department of Cardiology, King's College Hospital, London, UK; ³⁵Department of Cardiology, University Hospital of Basel, Basel, Switzerland; ³⁶Fondazione Policlinico Universitario A. Gemelli IRCCS, Rome, Italy; ³⁷Department of Cardiology, Christchurch Hospital, Christchurch, New Zealand; ³⁸Department of Internal Medicine B, University Medicine Greifswald, Greifswald, Germany; ³⁹DZHK (German Centre for Cardiovascular Research), partner site Greifswald, Greifswald, Germany; ⁴⁰Department of Cardiology and Cardiac Imaging Center, University Hospital of Rangueil, Toulouse, France; ⁴¹Intensive Coronary Care Unit, Moscow City Hospital # 1 named after N. Pirogov, Moscow, Russia; ⁴²First Department of Medicine, Faculty of Medicine, University Medical Centre Mannheim (UMM), University of Heidelberg, Mannheim, Germany; ⁴³DZHK (German Center for Cardiovascular Research), Partner Site, Heidelberg-Mannheim, Mannheim, Germany; ⁴⁴Cardiocenter, Third Faculty of Medicine, Charles University in Prague, University Hospital Kralovske Vinohrady, Prague, Czech Republic; ⁴⁵Division of Cardiovascular Medicine, Department of

Medicine, College of Medicine, University of Florida, Gainesville, FL, USA; ⁴⁶Department of Internal Medicine I - Cardiology, University Hospital Olomouc, Olomouc, Czech Republic; ⁴⁷Klinik für Innere Medizin III, Universitätsklinikum des Saarlandes, Homburg, Germany; ⁴⁸Advanced Heart Failure and Transplantation Center, University Medical Center Ljubljana, Ljubljana, Slovenia; ⁴⁹Cardiology Department, Santa Maria University Hospital (CHLN), Lisbon Academic Medical Centre and Cardiovascular Centre of the University of Lisbon (CCUL), Lisbon School of Medicine, Universidade de Lisboa, Lisbon, Portugal; ⁵⁰Department of Internal Medicine II, University Medical Center Regensburg, Regensburg, Germany; ⁵¹Local Health Unit n.8, Cardiology Unit, Arzignano, Vicenza, Italy; ⁵²Department of Cardiology, Chiba Emergency Medical Center, Chiba, Japan; ⁵³Division of Cardiology, Kimitsu Central Hospital, Kisarazu, Japan; ⁵⁴Department of Cardiovascular Medicine, Chiba University Graduate School of Medicine, Chiba, Japan; ⁵⁵Department of Cardiovascular Diseases, Mayo Clinic, Rochester, MN, USA; ⁵⁶Division of Cardiology, Heart and Vascular Center, University of Iowa, Iowa City, Iowa, USA; ⁵⁷Department of Internal Medicine I, Jena University Hospital, Friedrich-Schiller-University Jena, Jena, Germany; ⁵⁸Division of Cardiology, A.O.U San Luigi Gonzaga, Turin, Italy; ⁵⁹Department of Cardiology, Kantonsspital St. Gallen, St. Gallen, Switzerland; ⁶⁰Department of Cardiology, Centro Hospitalar Universitário de São João, E.P.E, Porto, Portugal; ⁶¹Department of Cardiology, Basil Hetzel Institute, Queen Elizabeth Hospital, University of Adelaide, Adelaide, Australia; ⁶²Internal Medicine/Cardiology, Angiology, and Pneumology, Magdeburg University, Magdeburg, Germany; ⁶³Department of Internal Medicine/Cardiology, Heart Center Leipzig - University Hospital, Leipzig, Germany; ⁶⁴Structural Interventional Cardiology, Careggi University Hospital, Florence, Italy; ⁶⁵Department of Cardiology, Leiden University Medical Centre, Leiden, The Netherlands; ⁶⁶Center for Molecular Cardiology, Schlieren Campus, University of Zurich, Zurich, Switzerland; and ⁶⁷Royal Brompton and Harefield Hospitals Trust and Imperial College, London, UK

Abstract

Aims Acute pulmonary disorders are known physical triggers of takotsubo syndrome (TTS). This study aimed to investigate prevalence of acute pulmonary triggers in patients with TTS and their impact on outcomes.

Methods and results Patients with TTS were enrolled from the International Takotsubo Registry and screened for triggering factors and comorbidities. Patients were categorized into three groups (acute pulmonary trigger, chronic lung disease, and no lung disease) to compare clinical characteristics and outcomes.

Of the 1670 included patients with TTS, 123 (7%) were identified with an acute pulmonary trigger, and 194 (12%) had a known history of chronic lung disease. The incidence of cardiogenic shock was highest in patients with an acute pulmonary trigger compared with those with chronic lung disease or without lung disease (17% vs. 10% vs. 9%, $P = 0.017$). In-hospital mortality was also higher in patients with an acute pulmonary trigger than in the other two groups, although not significantly (5.7% vs. 1.5% vs. 4.2%, $P = 0.13$). Survival analysis demonstrated that patients with an acute pulmonary trigger had the worst long-term outcome ($P = 0.002$). The presence of an acute pulmonary trigger was independently associated with worse long-term mortality (hazard ratio 2.12, 95% confidence interval 1.33–3.38; $P = 0.002$).

Conclusions The present study demonstrates that TTS is related to acute pulmonary triggers in 7% of all TTS patients, which accounts for 21% of patients with physical triggers. The presence of acute pulmonary trigger is associated with a severe in-hospital course and a worse long-term outcome.

Keywords Takotsubo syndrome; Broken heart syndrome; Outcome; Acute respiratory insufficiency; Chronic obstructive pulmonary disease; InterTAK Registry

Received: 27 October 2020; Revised: 20 November 2020; Accepted: 24 November 2020

*Correspondence to: Christian Templin, Department of Cardiology, University Heart Center, University Hospital of Zurich, Raemistrasse 100, 8091 Zurich, Switzerland. Tel: +41 (0)44 255 9585. Email: christian.templin@usz.ch

Jelena R. Ghadri and Christian Templin contributed equally to this work.

Introduction

Takotsubo syndrome (TTS) is characterized by acute left ventricular dysfunction and mainly occurs in postmenopausal women.^{1–4} In addition, TTS is often associated with antecedent emotional or physical stressors.^{4–6} Recent data indicate approximately one-third of patients show identifiable physical stressful triggers, including a wide spectrum of medical conditions, such as respiratory disorders.^{7,8} However, there is scarce information on the relationship between antecedent acute respiratory disorders and TTS.

Hypoxia during acute pulmonary decompensation may activate sympathetic drive and provoke catecholamine surge, which can trigger TTS. Acute respiratory disorders have been identified as a physical trigger for TTS in numerous case reports and systematic reviews.^{9–11} Due to the

effects of the cardio-respiratory systems on haemodynamic status, such respiratory disorders may also affect the prognosis of TTS.¹²

The aim of the present study was to investigate the prevalence of acute pulmonary triggers and history of chronic lung disease in patients with TTS and their clinical impact on in-hospital and long-term outcomes using the International Takotsubo Registry (InterTAK Registry; www.takotsubo-registry.com) cohort.

Methods

Patients and inclusion criteria

Takotsubo syndrome patients were enrolled from the InterTAK Registry as previously described.¹³ Data were que-

ried from the University Hospital Zurich and 25 collaborating hospitals in nine countries (Austria, Finland, France, Germany, Italy, Poland, Switzerland, UK, and the USA) from 1 January 2011 to 31 December 2014. TTS was diagnosed according to the modified Mayo Clinic Diagnostic Criteria^{13,14}: (i) a transient wall motion abnormality in the left ventricle beyond a single coronary artery territory; (ii) the absence of obstructive coronary artery disease or angiographic evidence of acute plaque rupture, explaining the wall motion abnormality; (iii) new electrocardiographic abnormalities or elevation in cardiac troponin values; and (iv) the absence of myocarditis. Patients matching all other criteria, in whom the wall-motion abnormality was identical to a single coronary artery territory coincidentally, were included. TTS patients who died during the acute phase before complete recovery of wall motion were not excluded. When eligibility for inclusion was uncertain, patient charts were reviewed by several core members at the University Hospital Zurich to reach an agreement.

The investigation conforms with the principles outlined in the Declaration of Helsinki. The study protocol was reviewed by the respective local ethics committees or investigational review boards at each collaborating site. Due to the partly retrospective nature of the study, ethics committees of most study centres waived the need for informed consent. At centres in which the ethics committees or investigational review boards required informed consent or in which patients were included prospectively, formal written consent was obtained from patients or surrogates.

We screened for TTS triggering factors and comorbidities in all patients. The definition of an acute pulmonary trigger included acute exacerbation of chronic obstructive pulmonary disease (COPD) or asthma, acute respiratory infection including bacterial/viral pneumonia, bronchitis, aspiration, acute respiratory distress syndrome (ARDS), pneumothorax and acute respiratory failure from other pulmonary conditions except for apparent cardiogenic pulmonary oedema secondary to TTS. A history of chronic lung disease was defined as a clear diagnosis of COPD/asthma characterized by persistent respiratory symptoms and airflow limitation in patient charts. Follow-up data were collected through clinical visits, clinical charts, or phone calls.

We categorized all patients with TTS into three groups: (i) those triggered by an acute pulmonary process ('acute pulmonary trigger'), (ii) those with a known history of chronic lung disease without an acute pulmonary trigger ('chronic lung disease'), and (iii) patients with neither an acute respiratory trigger nor a chronic lung disease ('no lung disease'). We compared clinical characteristics, hospital course (including intensive care treatment and complications), and 5 year outcomes between the three groups.

Statistical analysis

Continuous data are presented as mean \pm standard deviation, and laboratory values are given as medians and interquartile ranges. Categorical variables are provided as numbers and percentages. Comparisons of patient characteristics between different groups were performed with one-way analysis of variance or Kruskal–Wallis test for continuous data and Pearson χ^2 test for categorical variables.

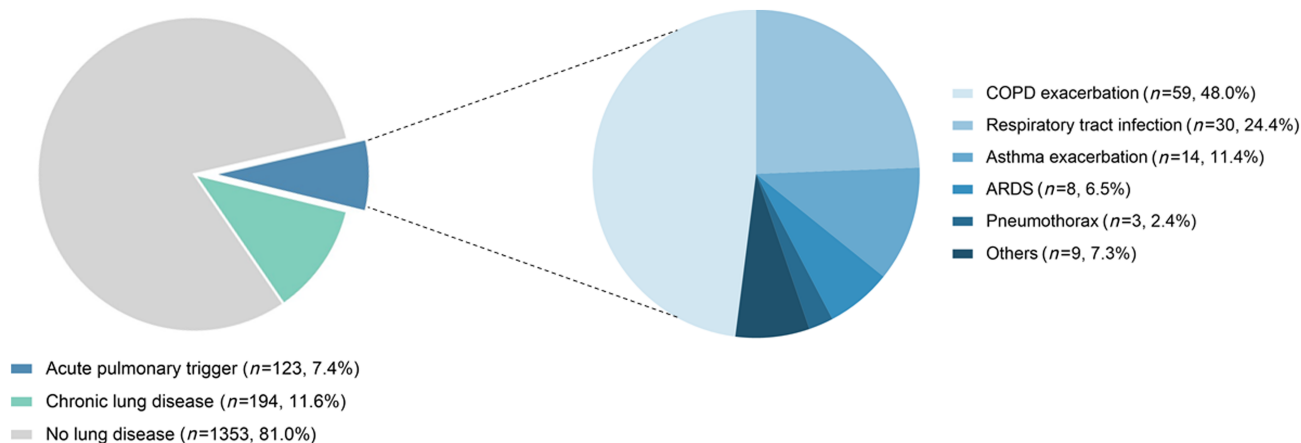
Outcome analysis was performed using Kaplan–Meier estimates and log-rank tests. Cox-regression analysis was conducted to determine the hazard ratio and 95% confidence intervals of an acute pulmonary trigger and past history of chronic lung disease using the no lung disease group as a reference. To adjust for potential differences between groups, a multivariable analysis (including variables that had shown a significant difference in the baseline comparison and were likely correlates of long-term mortality) was performed via Cox-regression analysis. Missing data on covariates were completed with multiple imputations prior to multivariable Cox-regression. All tests were two-sided and statistical significance was defined as $P < 0.05$. Statistical analyses were performed using IBM SPSS Statistics, Version 25.0 (IBM Corp., Armonk, NY, USA). Graphs were compiled with Prism 7 (GraphPad, La Jolla, CA, USA).

Results

From the InterTAK Registry, 1670 patients with complete information on triggering factors and history of lung disorders were analysed. Of these patients, TTS triggered by an acute pulmonary disease was identified in 123 patients (7%, *Figure 1*), consisting of acute exacerbation of COPD ($n = 59$, 48%) or asthma ($n = 14$, 11%), acute respiratory infection ($n = 30$, 24%), ARDS ($n = 8$, 7%), pneumothorax ($n = 3$, 2%), and acute respiratory failure from other pulmonary conditions ($n = 9$, 7%). A total of 194 patients (12%) had a known history of chronic lung disease that did not trigger TTS, including COPD ($n = 151$, 78%) and asthma ($n = 43$, 22%). The remaining 1353 patients (81%) were without an acute pulmonary disease process or known history of chronic lung disease.

The comparison of clinical characteristics between groups is summarized in *Table 1*. The proportion of female patients was significantly higher in patients with no lung disease than in the other groups (84% vs. 85% vs. 91%, $P = 0.003$). There was no difference in age between groups. The highest creatine kinase level on admission was shown in patients with no lung disease (factor increase of the upper limit of normal, 0.71 vs. 0.75 vs. 0.87; $P = 0.016$), while there was no difference in troponin or brain natriuretic peptide. White blood cell count on admission was highest in patients with an acute

Figure 1 Acute pulmonary triggers and chronic lung diseases. Acute pulmonary triggers were identified in 7% of patients. In the other patients, 12% had a past history of chronic lung diseases including chronic obstructive pulmonary disease and asthma. Patients without an acute pulmonary trigger or chronic lung disease were classified into the no lung disease group (81%). ARDS, acute respiratory distress syndrome; COPD, chronic obstructive pulmonary disease.



pulmonary trigger (11.58 vs. 10.04 vs. 9.60 , $\times 10^3/\mu\text{L}$, $P < 0.001$). There was no difference in electrocardiographic findings and TTS types between groups. Heart rate was significantly higher (98.3 ± 22.9 bpm vs. 91.4 ± 20.6 bpm vs. 86.1 ± 21.7 bpm, $P < 0.001$), and left ventricular ejection fraction ($38.1 \pm 12.1\%$ vs. $39.8 \pm 11.6\%$ vs. $41.4 \pm 11.7\%$, $P = 0.005$) was reduced significantly in patients with an acute pulmonary trigger. There were significantly more current smokers in the group with an acute pulmonary trigger and chronic lung disease (32% vs. 36% vs. 17% , $P < 0.001$), which was associated with a higher prevalence of respiratory tract cancer (4.2% vs. 6.5% vs. 1.7% , $P < 0.001$). Acute intensive care treatments, especially invasive or non-invasive ventilation, were needed most frequently in patients with an acute pulmonary trigger (45% vs. 21% vs. 14% , $P < 0.001$). In addition, the incidence of cardiogenic shock was highest in patients with an acute pulmonary trigger (17% vs. 10% vs. 9% , $P = 0.017$), which was associated with the highest prevalence of catecholamine use. In-hospital mortality was numerically higher in patients with an acute pulmonary trigger, although the difference was not statistically significant (5.7% vs. 1.5% vs. 4.2% , $P = 0.13$).

Five-year survival analysis (Figure 2) demonstrated that patients with an acute pulmonary trigger had the worst outcome when compared with patients with chronic lung disease ($P = 0.003$) and patients without pulmonary disease ($P = 0.001$). No statistical evidence could be observed when comparing 5 year mortality between patients with chronic lung disease and patients without pulmonary disorders ($P = 0.58$). Cox-regression analysis revealed that an acute pulmonary trigger was independently associated with worse 5 year mortality (hazard ratio 2.12, 95% confidence interval 1.33–3.38; $P = 0.002$), while chronic lung disease had no impact ($P = 0.22$; Figure 3).

Discussion

The principal findings of this study were as follows: (i) acute pulmonary disorders accounted for 21% of all patients with physical triggers in the InterTAK Registry; (ii) the presence of an acute pulmonary trigger in TTS was independently associated with worse long-term outcome; (iii) the coexistence of COPD or asthma in patients who had non-pulmonary triggers for TTS had no effects on long-term mortality outcomes.

Although emotional stress was classically recognized a typical feature of TTS, previous studies showed that more than one-third of patients with TTS were provoked by physical stressors.^{7,13} Recently, significant diversity of physical stressors has been reported to trigger TTS, including acute respiratory disorders.¹³ Furthermore, respiratory disorders such as ARDS may trigger a transient decrease in global systolic dysfunction, which might represent a form of TTS. Indeed, in the present study, acute pulmonary triggers were identified in 7% of all TTS patients.

While the exact role of acute pulmonary triggers in TTS has not been established, multiple factors may be involved. Hypoxia during acute respiratory dysfunction may activate sympathetic drive and cause a chemo-reflex response that triggers TTS.¹⁰ Moreover, hypercapnia and associated respiratory acidosis have been reported to be strong stimuli for noradrenaline and adrenaline synthesis in animal models and humans.^{15,16} There may be potential additional effects of CO_2 on catecholamine stimulation beyond systemic acidosis.¹⁷ These cascades involve an enhanced sympathetic drive that results in elevated catecholamine levels, which is thought to have a central role in the pathophysiology of TTS.¹⁸

Table 1 Characteristics of takotsubo patients

Characteristic	Acute pulmonary trigger N = 123	Chronic lung disease N = 194	No lung disease N = 1353	P value
Demographics				
Female sex—no./total no. (%)	103/123 (83.7)	165/194 (85.1)	1230/1353 (90.9)	0.003
Age (years)	67.3 ± 11.5 (N = 123)	66.6 ± 11.5 (N = 194)	66.4 ± 13.3 (N = 1353)	0.76
Triggers—no./total no. (%)				
Physical	123/123 (100.0)	67/194 (34.5)	407/1353 (30.1)	<0.001
Emotional	0/123 (0.0)	40/194 (20.6)	432/1353 (31.9)	<0.001
No evident trigger	0/123 (0.0)	62/194 (32.0)	410/1353 (30.3)	<0.001
Takotsubo type—no./total no. (%)				
Typical	92/123 (74.8)	157/194 (80.9)	1110/1353 (82.0)	0.14
Symptoms on admission—no./total no. (%)				
Chest pain	56/107 (52.3)	127/177 (71.8)	1002/1274 (78.6)	<0.001
Dyspnoea	100/115 (87.0)	110/177 (62.1)	523/1265 (41.3)	<0.001
Cardiac biomarkers—median (IQR)				
Troponin on admission—factor increase in ULN*	8.67 (2.07–24.86) N = 101	4.90 (1.80–19.90) N = 157	8.00 (2.36–23.43) N = 1107	0.18
Creatine kinase on admission—factor increase in ULN	0.71 (0.39–1.13) N = 75	0.75 (0.46–1.44) N = 126	0.87 (0.54–1.51) N = 959	0.016
BNP on admission—factor increase in ULN†	4.73 (1.68–18.20) N = 40	6.29 (2.38–16.24) N = 66	6.64 (2.16–16.16) N = 324	0.74
Inflammatory markers—median (IQR)				
CRP on admission (mg/L)	5.80 (1.65–21.13) N = 72	4.00 (1.40–9.60) N = 111	3.80 (1.40–11.30) N = 911	0.33
WBC on admission (10 ³ /μL)	11.58 (8.68–15.78) N = 106	10.04 (8.00–12.88) N = 160	9.60 (7.30–12.30) N = 1150	<0.001
ECG on admission—no./total no. (%)				
ST-segment elevation	40/106 (37.7)	74/172 (43.0)	548/1238 (44.3)	0.42
T-wave inversion	47/106 (44.3)	69/172 (40.1)	509/1238 (41.1)	0.77
QTc (ms)	453.1 ± 50.5 (N = 83)	460.4 ± 52.9 (N = 140)	457.4 ± 49.3 (N = 882)	0.58
Haemodynamics—mean ± SD (N)				
Heart rate (beats per minute)	98.3 ± 22.9 (N = 99)	91.4 ± 20.6 (N = 160)	86.1 ± 21.7 (N = 1137)	<0.001
Systolic blood pressure (mmHg)	129.3 ± 27.1 (N = 96)	132.2 ± 31.1 (N = 165)	130.8 ± 28.7 (N = 1139)	0.73
Diastolic blood pressure (mmHg)	77.2 ± 19.0 (N = 94)	76.4 ± 17.0 (N = 163)	76.8 ± 16.9 (N = 1122)	0.92
Left ventricular ejection fraction (%)‡	38.1 ± 12.1 (N = 110)	39.8 ± 11.6 (N = 182)	41.4 ± 11.7 (N = 1241)	0.005
Cardiovascular risk factors—no./total no. (%)				
Hypertension	85/123 (69.1)	129/193 (66.8)	869/1343 (64.7)	0.55
Diabetes mellitus	17/122 (13.9)	32/193 (16.6)	191/1348 (14.2)	0.66
Current smoking	38/120 (31.7)	68/190 (35.8)	222/1309 (17.0)	<0.001
Hypercholesterolemia	42/122 (34.4)	59/192 (30.7)	420/1342 (31.3)	0.76
Cancer—no./total no. (%)	16/118 (13.6)	45/185 (24.3)	199/1289 (15.4)	0.007
Respiratory tract	5/118 (4.2)	12/185 (6.5)	22/1289 (1.7)	<0.001
Medication at discharge—no. (%)				
ACE-inhibitor or ARB	82/109 (75.2)	142/178 (79.8)	952/1189 (80.1)	0.49
Beta-blocker	76/109 (69.7)	124/178 (69.7)	948/1189 (79.7)	0.001
Calcium-channel antagonist	13/109 (11.9)	12/178 (6.7)	101/1189 (8.5)	0.31
Statin	54/109 (49.5)	89/178 (50.0)	616/1189 (51.8)	0.83
Aspirin	71/109 (65.1)	125/178 (70.2)	794/1189 (66.8)	0.60
P2Y12 antagonist	15/109 (13.8)	24/178 (13.5)	128/1189 (10.8)	0.40
Coumarin	9/109 (8.3)	8/178 (4.5)	104/1189 (8.7)	0.16
Acute intensive care treatment—no./total no. (%)				
Intra-aortic balloon pump	55/122 (45.1)	48/193 (24.9)	235/1349 (17.4)	<0.001
Invasive or non-invasive ventilation	4/122 (3.3)	4/193 (2.1)	36/1349 (2.7)	0.80
Cardiopulmonary resuscitation	55/122 (45.1)	41/193 (21.2)	183/1349 (13.6)	<0.001
	12/122 (9.8)	11/193 (5.7)	117/1349 (8.7)	0.32

(Continues)

Table 1 (continued)

Characteristic	Acute pulmonary trigger N = 123	Chronic lung disease N = 194	No lung disease N = 1353	P value
Catecholamine use	29/122 (23.8)	23/193 (11.9)	147/1349 (10.9)	<0.001
In-hospital complications—no./total no. (%)	26/122 (21.3)	20/192 (10.4)	148/1343 (11.0)	0.003
Cardiogenic shock	21/122 (17.2)	19/192 (9.9)	123/1343 (9.2)	0.017
Death	7/123 (5.7)	3/194 (1.5)	57/1353 (4.2)	0.13

ACE, angiotensin-converting enzyme; ARB, angiotensin receptor blocker; BNP, brain natriuretic peptide; CRP, C-reactive protein; ECG, electrocardiogram; IQR, interquartile range; QTc, QT time corrected for heart rate; SD, standard deviation; ULN, upper limit of normal; WBC, white blood cell count.

*Including upper limits of the normal range for troponin T, high-sensitivity troponin T, and troponin I.

†Including upper limits of the normal range for brain natriuretic peptide and the N-terminal of prohormone brain natriuretic peptide.

‡Data obtained during catheterization or echocardiography; if both results were available data from catheterization were used.

In the present study, the most common pulmonary trigger for TTS was exacerbation of COPD/asthma (59%), followed by acute respiratory infections and ARDS. This strongly supports the close relationship between acute and/or chronic respiratory inflammation and cardiac diseases shown in other studies. Patients with COPD/asthma have chronically increased systemic inflammation, and additional inflammatory responses are observed during acute exacerbations.¹⁹ Moreover, respiratory infections have been shown to increase the risk of myocardial infarction in the general population.²⁰ Donaldson *et al.* demonstrated an increased risk of secondary myocardial infarction and stroke in patients with acute exacerbations of COPD in relation to elevated inflammatory markers such as fibrinogen and C-reactive protein.²¹ Indeed, a recent experimental study revealed the importance of myocardial inflammatory activation in the pathogenesis of TTS.²² Given that oxidative stress-mediated inflammatory responses play a key role in pulmonary conditions such as asthma, COPD, and pneumonia, it is conceivable that the same inflammatory response may also increase the risk of developing TTS.^{23,24}

Previous observational studies imply that β_2 -adrenergic agonists, which are often used as a daily treatment for obstructive lung disease, can provoke TTS.²⁵ Manfredini *et al.* reported that 72% of TTS patients with COPD/asthma were taking β_2 -agonists.⁹ Tornvall *et al.* revealed that β_2 -agonist use before admission was more common in patients with TTS compared with control subjects.²⁶ It is difficult to determine whether acute respiratory disorders or β_2 -agonist use is the primary cause of TTS in patients with exacerbation of COPD/asthma. Indeed, various factors (including hypoxia/hypercapnia, inflammation, and/or β_2 -agonist use) likely have synergistic effects on the development of TTS. For example, the increased mechanical work of breathing in acute pulmonary processes based on airway resistance, lung/chest elasticity, diaphragmatic and accessory muscles use, tidal volume, and respiratory rate may all play a role in triggering TTS.^{27–29} The catecholaminergic surge related to the psychological stress of an acute respiratory dysfunction is another important factor in TTS.³⁰

Exacerbation of COPD is a known precipitant of cardiac dysfunction and/or acute heart failure.³¹ About 74% of patients admitted with exacerbation of COPD had elevated troponin,³² with another study showing 23% of these patients had reduced left ventricular ejection fraction.³³ In addition, a systematic review by Hawkins *et al.* demonstrated that 16–60% of patients with exacerbation of COPD had elevated brain natriuretic peptide, which also predicted early adverse outcomes.³⁴ Therefore, COPD exacerbation may be a more common trigger for TTS than expected, particularly among intubated/sedated patients who cannot communicate their symptoms. As such, early cardiac investigation should be considered in patients admitted with exacerbated COPD/asthma, as concurrent cardiac comorbidity may significantly affect prognosis.

Figure 2 Kaplan–Meier curve for long-term mortality. Patients with an acute pulmonary trigger had the worst long-term prognosis, while the outcome of patients with a history of chronic lung disease was comparable with patients without lung disease. TTS, takotsubo syndrome.

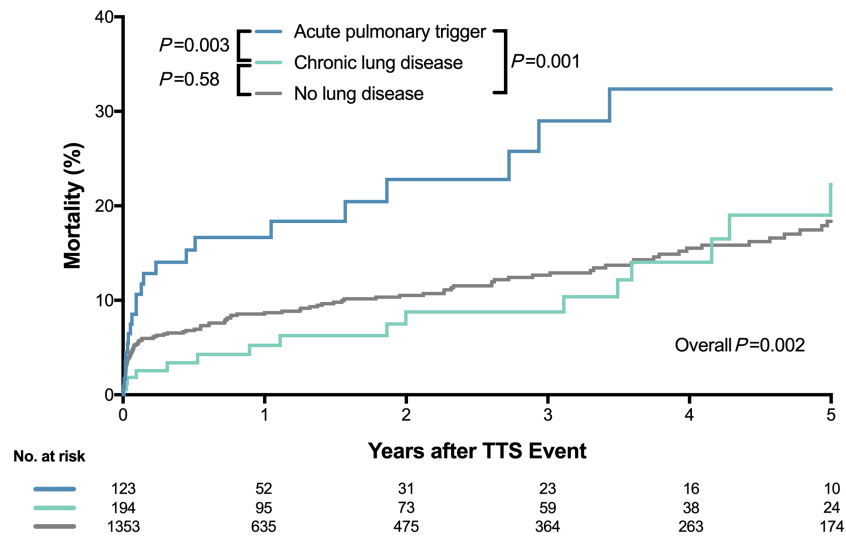
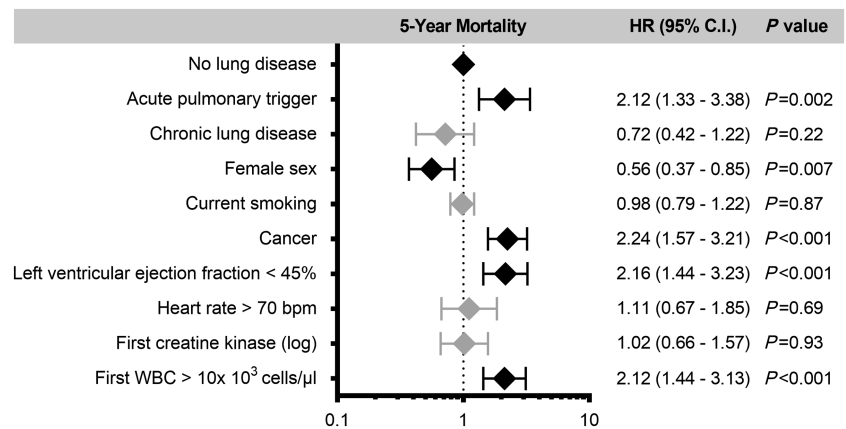


Figure 3 Outcome predictors. Multiple Cox-regression analysis adjusting for potential differences between the groups using the no lung disease group as a reference. The presence of an acute pulmonary trigger was independently associated with worse long-term mortality, while chronic lung disease had no impact. Male sex, history of cancer, left ventricular ejection fraction below 45%, and white blood cell count on admission were also independently associated with worse long-term outcome. Bpm, beats per minute; CI, confidence interval; HR, hazard ratio; WBC, white blood cell count. The error bars indicate 95% CI.



This is the first report demonstrating the clinical impact of acute pulmonary triggers on in-hospital and long-term outcomes in TTS patients. Intensive care treatment during the acute phase was more frequently required in patients with an acute pulmonary trigger than in other groups. In addition, cardiogenic shock was more often observed in patients with an acute pulmonary trigger. These results might be related to a lower left ventricular ejection fraction in patients with acute pulmonary trigger. Furthermore, multivariate analysis revealed that having an acute pulmonary trigger was independently associated with worse long-term outcome. TTS patients with a history of COPD/asthma needed invasive

or non-invasive ventilation more frequently during the acute phase than those without lung disease, while no difference was observed in regard to long-term mortality. These findings suggest that TTS development might reflect or affect the severity of pulmonary disorders.

Study limitations

First, differentiating primary respiratory failure triggering TTS from respiratory failure secondary to TTS is challenging. To avoid different approaches between centres, a core member

of the leading hospital collected the data from every hospital that is included in this registry. All available information were carefully reviewed, and we reach the final decision by a comprehensive approach. Second, as chronically increased systemic inflammation may be related to developing TTS, it is possible that corticosteroids use has an important role for preventing TTS. However, in our registry, data on corticosteroids were only available in a minority of patients. Third, we cannot determine whether the excess of 5 year mortality is a direct consequence of acute pulmonary causes and not related to TTS. Fourth, respiratory function of patients with acute pulmonary triggers or chronic lung disease during follow-up was not reassessed.

Conclusions

Acute respiratory disorders have previously been recognized as a possible triggering factor of TTS. However, the relationship between acute pulmonary triggers and TTS had not been evaluated until now. The present study demonstrates TTS is related to acute pulmonary triggers in 7% of all TTS patients, which accounts for 21% of patients with physical triggers.

References

1. Tsuchihashi K, Ueshima K, Uchida T, Oh-mura N, Kimura K, Owa M, Yoshiyama M, Miyazaki S, Haze K, Ogawa H, Honda T, Hase M, Kai R, Morii I. Angina pectoris-myocardial infarction investigations in Japan: transient left ventricular apical ballooning without coronary artery stenosis: a novel heart syndrome mimicking acute myocardial infarction. *J Am Coll Cardiol* 2001; **38**: 11–18.
2. Lyon AR, Bossone E, Schneider B, Sechtem U, Citro R, Underwood SR, Sheppard MN, Figtree GA, Parodi G, Akashi YJ, Ruschitzka F, Filippatos G, Mebazaa A, Omerovic E. Current state of knowledge on takotsubo syndrome: a position statement from the Taskforce on Takotsubo Syndrome of the Heart Failure Association of the European Society of Cardiology. *Eur J Heart Fail* 2016; **18**: 8–27.
3. Akashi YJ, Musha H, Kida K, Itoh K, Inoue K, Kawasaki K, Hashimoto N, Miyake F. Reversible ventricular dysfunction takotsubo cardiomyopathy. *Eur J Heart Fail* 2005; **7**: 1171–1176.
4. Citro R, Radano I, Parodi G, Di Vece D, Zito C, Novo G, Provenza G, Bellino M, Prota C, Silverio A, Antonini-Canterin F, Rigo F, Vriz O, Galasso G, Bossone E, Salerno-Uriarte J, Piscione F. Long-term outcome in patients with takotsubo syndrome presenting with severely reduced left ventricular ejection fraction. *Eur J Heart Fail* 2019; **21**: 781–789.
5. Kato K, Lyon AR, Ghadri JR, Templin C. Takotsubo syndrome: aetiology, presentation and treatment. *Heart* 2017; **103**: 1461–1469.
6. Wischniewsky MB, Candreva A, Bacchi B, Cammann VL, Kato K, Szawan KA, Gili S, D'Ascenzo F, Dichtl W, Citro R, Bossone E, Neuhaus M, Franke J, Sorici-Barb I, Jaguszewski M, Noutsias M, Knorr M, Heiner S, Burgdorf C, Kherad B, Tschope C, Sarcon A, Shinbane J, Rajan L, Michels G, Pfister R, Cuneo A, Jacobshagen C, Karakas M, Koenig W, Pott A, Meyer P, Arroja JD, Banning A, Cuculi F, Kobza R, Fischer TA, Vasankari T, Airaksinen KEJ, Napp LC, Budnik M, Dworakowski R, MacCarthy P, Kaiser C, Osswald S, Galiuto L, Chan C, Bridgman P, Beug D, Delmas C, Lairez O, El-Battrawy I, Akin I, Gilyarova E, Shilova A, Gilyarov M, Kozel M, Tousek P, Winchester DE, Galuszka J, Ukena C, Poglajen G, Carrilho-Ferreira P, Hauck C, Paolini C, Bilato C, Prasad A, Rihal CS, Liu K, Schulze PC, Bianco M, Jorg L, Rickli H, Nguyen TH, Kobayashi Y, Bohm M, Maier LS, Pinto FJ, Widimsky P, Borggrefe M, Felix SB, Opolski G, Braun-Dullaeus RC, Rottbauer W, Hasenfuss G, Pieske BM, Schunkert H, Thiele H, Bauersachs J, Katus HA, Horowitz J, Di Mario C, Munzel T, Crea F, Bax JJ, Lüscher TF, Ruschitzka F, Ghadri JR, Templin C. Prediction of short- and long-term mortality in takotsubo syndrome: the InterTAK Prognostic Score. *Eur J Heart Fail* 2019; **21**: 1469–1472.
7. Sharkey SW, Windenburg DC, Lesser JR, Maron MS, Hauser RG, Lesser JN, Haas TS, Hodges JS, Maron BJ. Natural history and expansive clinical profile of stress (tako-tsubo) cardiomyopathy. *J Am Coll Cardiol* 2010; **55**: 333–341.
8. Pelliccia F, Parodi G, Greco C, Antonucci D, Brenner R, Bossone E, Cacciotti L, Capucci A, Citro R, Delmas C, Guerra F, Ionescu CN, Lairez O, Larrauri-Reyes M, Lee PH, Mansencal N, Marazzi G, Mihos CG, Morel O, Nef HM, Nunez Gil LJ, Passaseo I, Pineda AM, Rosano G, Santana O, Schneck F, Song BG, Song JK, Teh AW, Ungprasert P, Valbusa A, Wahl A, Yoshida T, Gaudio C, Kaski JC. Comorbidities frequency in takotsubo syndrome: an international collaborative systematic review including 1109 patients. *Am J Med* 2015; **128**: e11–e19.
9. Manfredini R, Fabbian F, Giorgi AD, Pala M, Menegatti AM, Parisi C, Misurati E, Tiseo R, Gallerani M, Salmi R, Bossone E. Heart and lung, a dangerous liaison-Tako-tsubo cardiomyopathy and respiratory diseases: a systematic review. *World J Cardiol* 2014; **6**: 338–344.
10. Ghadri JR, Bataisou RD, Diekmann J, Lüscher TF, Templin C. First case of atypical takotsubo cardiomyopathy in a bilateral lung-transplanted patient due to

These patients more often develop cardiogenic shock and have an increased need for mechanical ventilation and catecholamine support. In addition, the presence of an acute pulmonary trigger is independently associated with worse long-term outcome. Further research is warranted for identification of mechanisms that may be targets for prevention and management of TTS in acute pulmonary illness.

Conflict of interest

The authors declare that they have no competing interests.

Funding

C. T. has been supported by the H.H. Sheikh Khalifa bin Hamad Al-Thani Research Programme and the Swiss Heart Foundation. The InterTAK Registry is supported by the Biss Davies Charitable Trust. L. S. M. has been supported by EU HORIZON 2020 (SILICOFM ID777204).

- acute respiratory failure. *Eur Heart J Acute Cardiovasc Care* 2015; **4**: 482–485.
11. Landefeld K, Saleh Q, Sander GE. Stress cardiomyopathy in the setting of COPD exacerbation. *J Investig Med High Impact Case Rep* 2015; **3**: 2324709615612847.
 12. Hawkins NM, Petrie MC, Macdonald MR, Jhund PS, Fabbri LM, Wikstrand J, McMurray JJ. Heart failure and chronic obstructive pulmonary disease: the quandary of beta-blockers and beta-agonists. *J Am Coll Cardiol* 2011; **57**: 2127–2138.
 13. Templin C, Ghadri JR, Diekmann J, Napp LC, Bataiosu DR, Jaguszewski M, Cammann VL, Sarcon A, Geyer V, Neumann CA, Seifert B, Hellermann J, Schwyzer M, Eisenhardt K, Jenewein J, Franke J, Katus HA, Burgdorf C, Schunkert H, Moeller C, Thiele H, Bauersachs J, Tschope C, Schultheiss HP, Laney CA, Rajan L, Michels G, Pfister R, Ukena C, Bohm M, Erbel R, Cuneo A, Kuck KH, Jacobshagen C, Hasenfuss G, Karakas M, Koenig W, Rottbauer W, Said SM, Braun-Dullaeus RC, Cuculi F, Banning A, Fischer TA, Vasankari T, Airaksinen KE, Fijalkowski M, Rynkiewicz A, Pawlak M, Opolski G, Dworakowski R, MacCarthy P, Kaiser C, Osswald S, Galiuto L, Crea F, Dichtl W, Franz WM, Empen K, Felix SB, Delmas C, Lairez O, Erne P, Bax JJ, Ford I, Ruschitzka F, Prasad A. Clinical Features LTF. Outcomes of takotsubo (stress) cardiomyopathy. *N Engl J Med* 2015; **373**: 929–938.
 14. Prasad A, Lerman A, Rihal CS. Apical ballooning syndrome (Tako-Tsubo or stress cardiomyopathy): a mimic of acute myocardial infarction. *Am Heart J* 2008; **155**: 408–417.
 15. Leitner LM. Dopamine metabolism in the rabbit carotid body in vitro: effect of hypoxia and hypercapnia. *Adv Exp Med Biol* 1993; **337**: 183–190.
 16. Low JM, Gin T, Lee TW, Fung K. Effect of respiratory acidosis and alkalosis on plasma catecholamine concentrations in anaesthetized man. *Clin Sci (Lond)* 1993; **84**: 69–72.
 17. Offner B, Czachurski J, Konig SA, Seller H. Different effects of respiratory and metabolic acidosis on preganglionic sympathetic nerve activity. *J Appl Physiol (1985)* 1994; **77**: 173–178.
 18. Wittstein IS, Thiemann DR, Lima JA, Baughman KL, Schulman SP, Gerstenblith G, Wu KC, Rade JJ, Bivalacqua TJ, Champion HC. Neurohumoral features of myocardial stunning due to sudden emotional stress. *N Engl J Med* 2005; **352**: 539–548.
 19. Bhowmik A, Seemungal TA, Sapsford RJ, Wedzicha JA. Relation of sputum inflammatory markers to symptoms and lung function changes in COPD exacerbations. *Thorax* 2000; **55**: 629–630.
 20. Smeeth L, Thomas SL, Hall AJ, Hubbard R, Farrington P, Vallance P. Risk of myocardial infarction and stroke after acute infection or vaccination. *N Engl J Med* 2004; **351**: 2611–2618.
 21. Donaldson GC, Hurst JR, Smith CJ, Hubbard RB, Wedzicha JA. Increased risk of myocardial infarction and stroke following exacerbation of COPD. *Chest* 2010; **137**: 1091–1097.
 22. Surikow SY, Nguyen TH, Stafford I, Chapman M, Chacko S, Singh K, Licari G, Raman B, Kelly DJ, Zhang Y, Waddingham MT, Ngo DT, Bate AP, Chua SJ, Frenneaux MP, Horowitz JD. Nitrosative stress as a modulator of inflammatory change in a model of takotsubo syndrome. *JACC Basic Transl Sci* 2018; **3**: 213–226.
 23. Mishra V, Banga J, Silveyra P. Oxidative stress and cellular pathways of asthma and inflammation: therapeutic strategies and pharmacological targets. *Pharmacol Ther* 2018; **181**: 169–182.
 24. Marginean C, Popescu MS, Vladaia M, Tudorascu D, Pirvu DC, Petrescu F. Involvement of oxidative stress in COPD. *Curr Health Sci J* 2018; **44**: 48–55.
 25. Salemi VM, Atik E, Kairalla RA, Queiroz EL, Rosa LV, Kalil Filho R. Takotsubo cardiomyopathy triggered by $\beta(2)$ adrenergic agonist. *J Bras Pneumol* 2011; **37**: 560–562.
 26. Tornvall P, Collste O, Ehrenborg E, Jarnbert-Pettersson H. A case-control study of risk markers and mortality in takotsubo stress cardiomyopathy. *J Am Coll Cardiol* 2016; **67**: 1931–1936.
 27. Chen S, Li Y, Zheng Z, Luo Q, Chen R. The analysis of components that lead to increased work of breathing in chronic obstructive pulmonary disease patients. *J Thorac Dis* 2016; **8**: 2212–2218.
 28. Bellani G, Pesenti A. Assessing effort and work of breathing. *Curr Opin Crit Care* 2014; **20**: 352–358.
 29. Kallet RH, Hemphill JC 3rd, Dicker RA, Alonso JA, Campbell AR, Mackersie RC, Katz JA. The spontaneous breathing pattern and work of breathing of patients with acute respiratory distress syndrome and acute lung injury. *Respir Care* 2007; **52**: 989–995.
 30. Gift AG, Plaut SM, Jacox A. Psychologic and physiologic factors related to dyspnea in subjects with chronic obstructive pulmonary disease. *Heart Lung* 1986; **15**: 595–601.
 31. Ponikowski P, Voors AA, Anker SD, Bueno H, Cleland JG, Coats AJ, Falk V, Gonzalez-Juanatey JR, Harjola VP, Jankowska EA, Jessup M, Linde C, Nihoyannopoulos P, Parissis JT, Pieske B, Riley JP, Rosano GM, Ruilope LM, Ruschitzka F, Rutten FH, van der Meer P, Task Force M. 2016 ESC Guidelines for the diagnosis and treatment of acute and chronic heart failure: the Task Force for the diagnosis and treatment of acute and chronic heart failure of the European Society of Cardiology (ESC) Developed with the special contribution of the Heart Failure Association (HFA) of the ESC. *Eur Heart J* 2016; **37**: 2129–2200.
 32. Hoiseith AD, Neukamm A, Karlsson BD, Omland T, Brekke PH, Soyseth V. Elevated high-sensitivity cardiac troponin T is associated with increased mortality after acute exacerbation of chronic obstructive pulmonary disease. *Thorax* 2011; **66**: 775–781.
 33. Gariani K, Delabays A, Perneger TV, Agoritsas T. Use of brain natriuretic peptide to detect previously unknown left ventricular dysfunction in patients with acute exacerbation of chronic obstructive pulmonary disease. *Swiss Med Wkly* 2011; **141**: w13298.
 34. Hawkins NM, Khosla A, Virani SA, McMurray JJ, FitzGerald JM. B-type natriuretic peptides in chronic obstructive pulmonary disease: a systematic review. *BMC Pulm Med* 2017; **17**: 11.