

ORIGINAL ARTICLE

TRPC1-mediated Ca²⁺ signaling enhances intestinal epithelial restitution by increasing α 4 association with PP2Ac after wounding

Navneeta Rathor^{1,2} | Hee Kyoung Chung^{1,2} | Jia-Le Song¹ | Shelley R. Wang² | Jian-Ying Wang^{1,2,3} | Jaladanki N. Rao^{1,2} 

¹Cell Biology Group, Department of Surgery, University of Maryland School of Medicine, Baltimore, MD, USA

²Baltimore Veterans Affairs Medical Center, Baltimore, MD, USA

³Department of Pathology, University of Maryland School of Medicine, Baltimore, MD, USA

Correspondence

Jaladanki N. Rao, Department of Surgery, Baltimore Veterans Affairs Medical Center, 10 North Greene Street, Baltimore, MD 21201, USA.
Email: rjaladanki@som.umaryland.edu

Funding information

This work was supported by Merit Review Awards from the Department of Veterans Affairs (JNR and JYW) and by grants from National Institutes of Health (DK-57819, DK-61972, and DK-68491 to JYW).

Abstract

Gut epithelial restitution after superficial wounding is an important repair modality regulated by numerous factors including Ca²⁺ signaling and cellular polyamines. Transient receptor potential canonical-1 (TRPC1) functions as a store-operated Ca²⁺ channel in intestinal epithelial cells (IECs) and its activation increases epithelial restitution by inducing Ca²⁺ influx after acute injury. α 4 is a multiple functional protein and implicated in many aspects of cell functions by modulating protein phosphatase 2A (PP2A) stability and activity. Here we show that the clonal populations of IECs stably expressing TRPC1 (IEC-TRPC1) exhibited increased levels of α 4 and PP2A catalytic subunit (PP2Ac) and that TRPC1 promoted intestinal epithelial restitution by increasing α 4/PP2Ac association. The levels of α 4 and PP2Ac proteins increased significantly in stable IEC-TRPC1 cells and this induction in α 4/PP2Ac complexes was accompanied by an increase in IEC migration after wounding. α 4 silencing by transfection with siRNA targeting α 4 (si α 4) or PP2Ac silencing destabilized α 4/PP2Ac complexes in stable IEC-TRPC1 cells and repressed cell migration over the wounded area. Increasing the levels of cellular polyamines by stable transfection with the *Odc* gene stimulated α 4 and PP2Ac expression and enhanced their association, thus also promoting epithelial restitution after wounding. In contrast, depletion of cellular polyamines by treatment with α -difluoromethylornithine reduced α 4/PP2Ac complexes and repressed cell migration. Ectopic overexpression of α 4 partially rescued rapid epithelial repair in polyamine-deficient cells. These results indicate that activation of TRPC1-mediated Ca²⁺ signaling enhances cell migration primarily by increasing α 4/PP2Ac associations after wounding and this pathway is tightly regulated by cellular polyamines.

KEYWORDS

cell migration, epithelial restitution, IEC-6 cells, mucosal injury, ornithine decarboxylase, polyamines, TRPC1

Navneeta Rathor and Hee Kyoung Chung are contributed equally to this work.

This is an open access article under the terms of the Creative Commons Attribution License, which permits use, distribution and reproduction in any medium, provided the original work is properly cited.

© 2021 The Authors. *Physiological Reports* published by Wiley Periodicals LLC on behalf of The Physiological Society and the American Physiological Society

1 | INTRODUCTION

The gastrointestinal (GI) epithelium is exposed to a wide array of luminal noxious substances and microbiota, while acute mucosal injury occurs commonly in critical pathologies (Guo et al., 2002, 2003; Liu et al., 2017). Early mucosal restitution occurs as a consequence of intestinal epithelial cell (IEC) migration to reseat superficial wounds, a process independent of cell proliferation (Aihara & Montrose, 2014; Dignass et al., 1994). This early rapid re-epithelialization after acute injury is a primary repair modality in the GI tract and is regulated by multiple factors, but its exact mechanism at the cellular and molecular levels remains largely unknown (Rao et al., 2001, 2008; Rathor, Chung, et al., 2014). Our previous studies and others show that cytosolic free Ca^{2+} ($[\text{Ca}^{2+}]_{\text{cyt}}$) plays a critical role in regulating epithelial restitution after acute injury and that Ca^{2+} entry due to store depletion contributes to the sustained increase in $[\text{Ca}^{2+}]_{\text{cyt}}$ and the refilling of Ca^{2+} into the stores (Rao et al., 2008, 2012, 2020; Wang et al., 2017). The canonical transient receptor potential channel 1 (TRPC1) functions as a store-operated Ca^{2+} channel (SOC) in IECs and is absolutely required for rapid epithelial restitution after acute injury (Rao et al., 2006). Recently, it has been reported that TRPC1-mediated Ca^{2+} influx stimulates epithelial restitution by activating caveolin 1 (Cav1) and RhoA signaling pathways (Chung et al., 2015; Rathor, Zhuang, et al., 2014).

Protein phosphatase 2A (PP2A)-associated protein $\alpha 4$ (also named as immunoglobulin-binding protein) has multiple functions and is implicated in a variety of cellular processes (Basu, 2011; Kong et al., 2007). $\alpha 4$ was initially identified as a component of receptor signal transduction complexes in mammalian lymphocytes, but it was later determined to be broadly expressed (Inui et al., 1995; LeNoue-Newton et al., 2016; McConnell et al., 2010). $\alpha 4$ forms a stable complex with the catalytic (C) subunit of serine/threonine PP2A (PP2Ac) or with PP4 and PP6, which collectively account for many cellular phosphatase activities (Herzog et al., 2012; Kong et al., 2004, 2009; Sents et al., 2013). Notably, PP2A heterotrimers are relatively unstable in response to stressful environments such as heat shock, DNA damage, and nutrient withdrawal, whereas overexpression of $\alpha 4$ results in a faster recovery of PP2A activity (Kong et al., 2009; Sents et al., 2013). The ability of $\alpha 4$ to protect PP2A from proteasomal-mediated degradation is dependent on the integrity of its PP2A-binding domain and C-terminal domain which recruit microtubule-associated E3 ubiquitin ligase and Mid1 (LeNoue-Newton et al., 2011; McConnell et al., 2010; Watkins et al., 2012). Recently, $\alpha 4$ /PP2Ac interaction is shown to regulate cell motility and be involved in activation of mTOR signaling pathways (Fielhaber et al., 2009; Wang & Jiang, 2003). The fibroblasts lacking $\alpha 4$ exhibit impaired

ability to spread and migrate, but forced expression of the $\alpha 4$ gene promotes cell spreading and motility (Kong et al., 2007). The level of $\alpha 4$ increases significantly in several cancers and transformed cells (Chen et al., 2011; LeNoue-Newton et al., 2016) and this change affects apoptosis, proliferation, and migration in cancer cells (Kong et al., 2007; LeNoue-Newton et al., 2016). We have recently found that intestinal epithelial tissue-specific $\alpha 4$ ablation in mice disrupts intestinal mucosal maturation and reduces IEC migration along the crypt-villus axis in the small intestine. The $\alpha 4$ -deficient intestinal epithelium also displays gut barrier dysfunction (Chung et al., 2018).

The purpose of the present study was to determine the possibility that TRPC1-mediated Ca^{2+} signaling regulates IEC migration by altering $\alpha 4$ /PP2Ac association after wounding. First, we examined the expression patterns of $\alpha 4$ and PP2Ac and their physical interactions in stable IEC-TRPC1 cells. Second, we examined whether silencing $\alpha 4$ or PP2Ac inhibits epithelial restitution in IECs overexpressing TRPC1. Finally, we determined whether $\alpha 4$ /PP2Ac interactions are regulated by cellular polyamines. Our results indicate that $\alpha 4$ /PP2Ac associations are enhanced by activating TRPC1-mediated Ca^{2+} signaling and this induction promotes early intestinal epithelial restitution.

2 | MATERIALS AND METHODS

2.1 | Chemicals and cell culture

Disposable culture ware was purchased from Corning Glass Works. Tissue culture media, LipofectAMINE 2000, and dialyzed fetal bovine serum (FBS) were obtained from Invitrogen, and biochemicals were obtained from Sigma. The affinity-purified mouse monoclonal antibodies against $\alpha 4$ (Catalog#5699) and PP2Ac (Catalog#2259) were purchased from Cell Signaling Technologies and the TRPC1 antibody from Santa Cruz Biotechnology (Catalog#sc-133076). The actin antibody that recognizes all isoforms (α , β , and γ ; Cat#CP-01) was purchased from EMD Millipore. The secondary antibodies conjugated to horseradish peroxidase (goat anti-rabbit IgG-HRP, cat#sc-2004; goat anti-mouse IgG HRP, cat#sc-2005) were purchased from Santa Cruz Biotechnology. L- α -difluoromethylornithine (DFMO) was from Genzyme. Human $\alpha 4$ cDNA was purchased from OriGene Technologies (Catalog#RC200387). The IEC-6 cell line was purchased from the American Type Culture Collection (ATCC) at passage 13. IEC-6 cells were derived from normal rat intestinal crypt cells and were developed and characterized by Quaroni et al. (1979). Stock cells were maintained in T-150 flasks in Dulbecco's modified Eagle medium (DMEM) supplemented with 5% heat-inactivated FBS, 10 $\mu\text{g}/\text{ml}$ insulin, and 50 $\mu\text{g}/\text{ml}$ gentamicin sulfate.

Flasks were incubated at 37°C in a humidified atmosphere of 90% air-10% CO₂, and *passages 15–20* were used in the experiments.

2.2 | Plasmid construction and transfection

The full-length cDNA of human TRPC1 (~3.8 kb) was inserted into the NotI and ApaI sites of expression vector pcDNA3.0(+) (Invitrogen) with the cytomegalovirus promoter (pcDNA-TRPC1) (Rao et al., 2006). The IEC-6 cells were transfected with the pcDNA-TRPC1 or pcDNA3.0(+) vectors containing no TRPC1 cDNA (Null) by using the LipofectAMINE kit and performed as recommended by the manufacturer (Invitrogen). After the 3-h period of incubation, the transfection medium was replaced by the standard growth medium containing 5% FBS for 2 days before exposure to the selection medium. These transfected cells were selected for TRPC1 integration by incubation with the selection medium containing 0.6 mg/ml of G418, and clones resistant to the selection medium were isolated, cultured, and screened for TRPC1 expression as described in our previous publications (Chung et al., 2015; Rao et al., 2006). Similarly, stable ODC-transfected IEC-6 cells (IEC-ODC) were developed and characterized as described (Rathor, Chung, et al., 2014; Wang et al., 2010) and cultured in DMEM medium used for growing IEC-6 cells.

2.3 | Polyamine depletion studies

We examined the effect of polyamine depletion on the $\alpha 4$ and PP2Ac expression in IEC-6 cells. IEC-6 cells were initially grown in DMEM containing 5% dFBS in the presence of either 5 mM DFMO alone or DFMO plus 10 μ M putrescine for 4 days. The dishes were placed on ice, the monolayers were washed three times with ice-cold Dulbecco's PBS (D-PBS), and then different solutions were added according to the assays to be performed. In addition, the effect of ectopic overexpression of $\alpha 4$ on cell migration in the presence of DFMO was also examined in IECs.

2.4 | RNA interference

The siRNA that was designed to specifically cleave $\alpha 4$ and PP2Ac mRNAs (si $\alpha 4$ or siPP2Ac) was synthesized (ON-TARGETplus SMARTpool) and purchased from Dharmacon. Scrambled control siRNA (C-siRNA), without sequence homology to any known genes, was used as the control. For each 60-mm cell culture dish, 20 μ l of the 5 μ M stock si $\alpha 4$ or siPP2Ac or C-siRNA was mixed with 500 μ l of Opti-MEM medium (Invitrogen). This mixture was gently added to a

solution containing 6 μ l of LipofectAMINE 2000 in 500 μ l of Opti-MEM. The solution was incubated for 15 min at room temperature and gently overlaid onto monolayers of cells in 3 ml of medium, and cells were harvested for various assays after 48-h incubation.

2.5 | Immunoprecipitation and Western blotting analysis

Cell samples, dissolved in ice-cold RIPA-buffer, were sonicated and centrifuged at 4°C and the supernatants were collected for immunoprecipitation (IP). Equal amounts of proteins (300 μ g) for each sample were incubated with the specific antibody against $\alpha 4$ or PP2Ac (4 μ g) at 4°C for 3 h, and protein A/G-PLUS-Agarose was added and incubated overnight at 4°C. The precipitates were washed five times with ice-cold Tris-buffered saline (TBS), and the beads were resuspended in SDS sample buffer. For immunoblotting, samples were subjected to electrophoresis on PAGE gels described previously (Jiang et al., 2019; Rathor, Chung, et al., 2014; Zhang et al., 2020). After the transfer of protein onto nitrocellulose membranes, the membranes were incubated for 1 h in 5% non-fat dry milk in 1 \times TBS-T buffer (0.1% Tween-20). Immunologic evaluation was then performed overnight at 4°C in 5% non-fat dry milk/TBS-T buffer containing a specific antibody against $\alpha 4$ or PP2Ac. The membranes were subsequently washed with 1 \times TBS-T and incubated with the secondary antibodies conjugated with horseradish peroxidase for 1 h at room temperature. The immunocomplexes on the membranes were reacted for 1 min with Chemiluminescence Reagent (NEL-100 DuPont NEN). All antibodies utilized in this paper were thoroughly validated for species specificity. Antibody dilutions used in this studies were; $\alpha 4$ (First Ab 1:1000; second AB 1:2000); PP2Ac (First Ab 1:2000; second Ab 1:2000); TRPC1 (First Ab 1:500; second Ab 1:1000); and Actin (First Ab 1:1000; second Ab 1:2500).

2.6 | Measurement of cell migration

Migration assays were carried out in an in vitro epithelial injury model as described in our earlier publications (Chung et al., 2015; Rao et al., 1999, 2006, 2008; Rathor, Chung, et al., 2014). Cells were plated at 6.25×10^4 /cm² in DMEM containing FBS on 60-mm dishes thinly coated with Matrigel according to the manufacturer's instructions (BD Biosciences, Bedford, MA) and were incubated as described for stock cultures. Cells were fed on day 2, and cell migration was assayed on day 4. To initiate migration, the cell layer was scratched with a single edge razor blade cut to ~27 mm in length. The scratch was made

over the diameter of the dish and extended over an area 7–10 mm wide. The migrating cells in six contiguous 0.1-mm squares were counted at $\times 100$ magnification beginning at the scratch line and extending as far out as the cells had migrated. All experiments were carried out independently 3–5 times, and the results were reported as number of migrating cells per millimeter of scratch.

2.7 | Immunofluorescence staining

Immunofluorescence staining was performed as described previously (Rathor, Zhuang, et al., 2014). After IECs were grown initially for 2 days, they were fixed using 4% formaldehyde, and the samples were incubated overnight at 4°C with primary antibody against $\alpha 4$ and PP2Ac diluted 1:100 in blocking buffer and then incubated with secondary antibodies conjugated with Cy5 and Alexa Fluor-488 (Molecular Probes) to detect subcellular localization respectively for 1 h at room temperature. After rinsing, slides were incubated with DAPI (1:5000) (Molecular Probes) for 10 min to stain nuclei, rinsed again, mounted, and viewed through a Nikon Eclipse Ti. Images were processed using PhotoShop software (Adobe).

2.8 | Statistical analysis

All data for migration experiments are expressed as means \pm SEM from six dishes in each experiment and independently repeated three times ($n = 3$). IP and immunoblotting analyses were repeated three times ($n = 3$). The significance of the difference between means was determined by one-way ANOVA with Dunnett's post hoc test (GraphPad InStat Prism 5). The level of significance was determined using the Duncan's multiple-range test (Harter, 1960) and values of $p < 0.05$ were considered statistically significant.

3 | RESULTS

3.1 | Induced $\alpha 4$ /PP2Ac association in stable IEC-TRPC1 cells

To determine if TRPC1-mediated Ca^{2+} influx increases $\alpha 4$ /PP2Ac association, basal levels of $\alpha 4$ and PP2Ac and their interactions were examined in stable IEC-TRPC1 cells. IEC-TRPC1 cells highly expressed TRPC1 (by ~ 5 -fold) and displayed a significant increase in Ca^{2+} influx (by ~ 2 -fold) after depletion of store Ca^{2+} by cyclopiazonic acid, similar to our previous studies (Chung et al., 2015; Rao et al., 2006, 2010). As shown in Figure 1a, levels of

TRPC1, $\alpha 4$, and PP2Ac proteins increased in two clones (Cs) of stable IEC-TRPC1 cells compared to those observed in parental IEC-6 cells transfected with an empty vector (Null). The levels of $\alpha 4$ and PP2Ac in C1 and C2 of IEC-TRPC1 cells were ~ 2.3 -fold of the value of null cells (Figure 1b). To examine the cellular distribution of $\alpha 4$ and PP2Ac, immunofluorescence staining was performed and showed co-localization of $\alpha 4$ and PP2Ac in the cytoplasm (Figure 1c). To further verify the association of $\alpha 4$ with PP2Ac, whole cell lysates were immunoprecipitated (IP) with the anti-PP2Ac antibody and the precipitates were examined by Western blot analysis using the antibody against $\alpha 4$ or PP2Ac. IP of PP2Ac resulted in co-IP of $\alpha 4$ and PP2Ac in null and stable IEC-TRPC1 cells, but the levels of $\alpha 4$ /PP2Ac complexes in IEC-TRPC1 cells were higher than those observed in null cells (Figure 1d). We also used IgG as a negative control in IP assays and found that incubation with IgG in the same conditions did not pull down either $\alpha 4$ or PP2Ac (data not shown). Like the induction of $\alpha 4$ /PP2Ac association, IEC migration over the wounded area also increased significantly in IEC-TRPC1 cells compared with null cells after injury (Figure 1e). These results indicate that activated TRPC1-mediated Ca^{2+} signaling increases the levels of $\alpha 4$ /PP2Ac complex, which is associated with an increase in cell migration after wounding.

3.2 | Silencing $\alpha 4$ or PP2Ac reduces $\alpha 4$ /PP2Ac complexes and represses epithelial restitution after wounding in IEC-TRPC1 cells

In this study, specific siRNA targeting $\alpha 4$ mRNA ($\text{si}\alpha 4$) was used to cleave rat $\alpha 4$ mRNA and inhibit $\alpha 4$ expression. Our preliminary study demonstrated that $>85\%$ of stable IEC-TRPC1 cells were positive 48 h after transfection with fluorescent FITC-conjugated $\text{si}\alpha 4$. We have also tested the transfection efficiency at other time points such as 24 and 72 h and found that 48 h post-transfection appeared optimal to carry out the experiments. As shown in Figure 2a, transfection with $\text{si}\alpha 4$ for 48 h decreased $\alpha 4$ levels by $\sim 80\%$. To determine the specificity of $\text{si}\alpha 4$ used in this study, we reprobated the membrane with either anti-TRPC1 or anti-PP2Ac antibody and showed that levels of TRPC1 and PP2Ac proteins were not affected when cells were transfected with $\text{si}\alpha 4$. However, $\alpha 4$ silencing by transfection with $\text{si}\alpha 4$ decreased $\alpha 4$ /PP2Ac complexes (by $\sim 65\%$) when compared with those observed in control cells and cells transfected with control siRNA (C-siRNA) (Figure 2b). Furthermore, decreased $\alpha 4$ /PP2Ac association by $\alpha 4$ silencing suppressed cell migration (by $\sim 40\%$) after wounding (Figure 2c and d). Neither $\alpha 4$ expression nor cell migration was decreased by transfection with C-siRNA. In addition, transfection with $\text{si}\alpha 4$ or

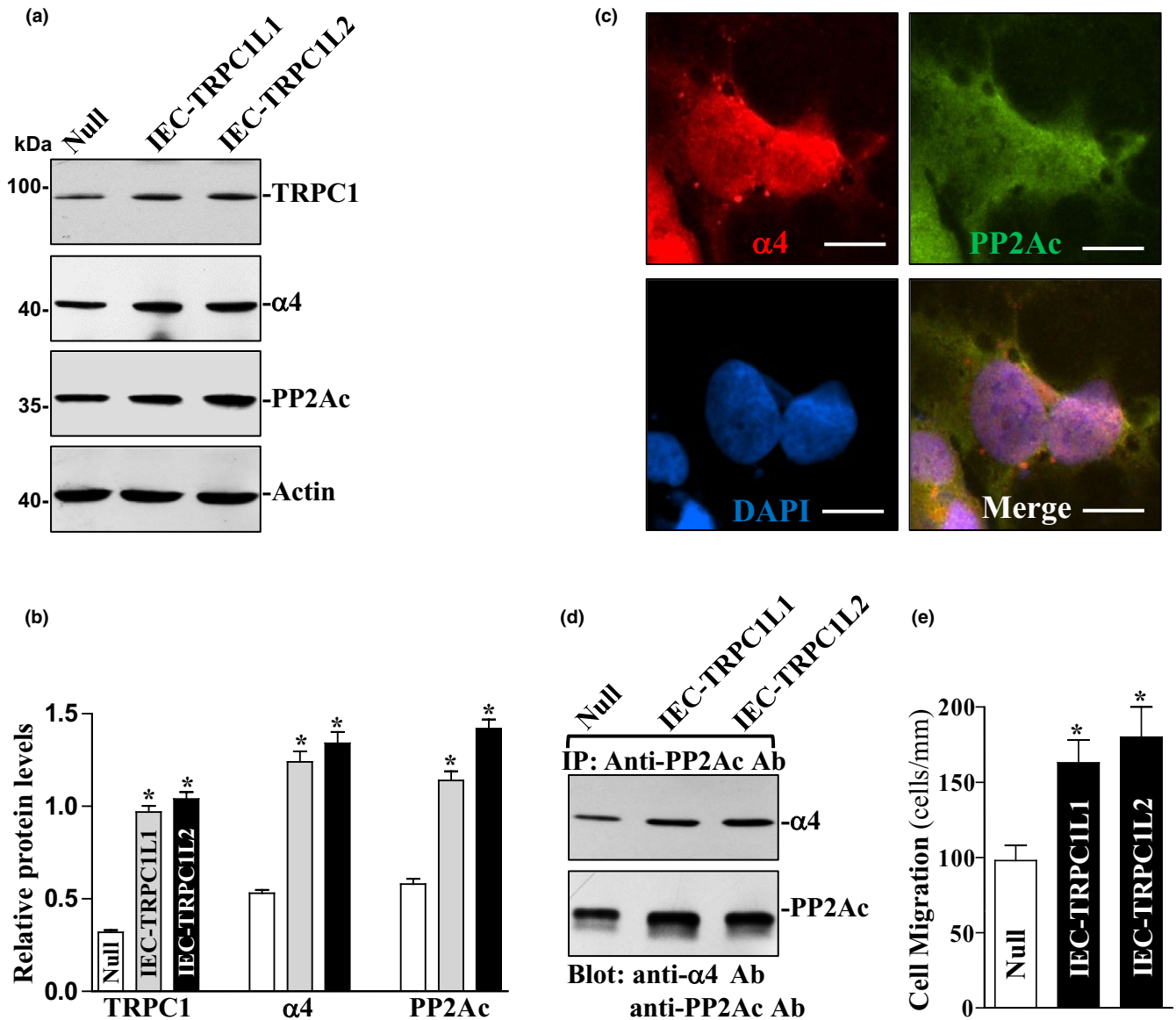


FIGURE 1 Levels of $\alpha 4$ and PP2Ac proteins, their physical interactions, and cell migration in the stable TRPC1-transfected IEC (IEC-TRPC1) cells. (a) representative immunoblots of TRPC1, $\alpha 4$ and PP2Ac. Levels of TRPC1, $\alpha 4$ and PP2Ac were examined by Western blot analysis, and actin immunoblotting was performed as an internal control for equal loading in two different clonal populations (L1&L2). Three separate experiments were performed that showed similar results. (b) quantitative analysis of western immunoblots by densitometry that were corrected for actin loading from cells described in (a). Values are means \pm SEM; * $p < 0.05$ compared with null. (c) subcellular distribution of $\alpha 4$ and PP2Ac in Caco-2 cells. After cells were initially grown for 48 h, immunostaining was performed. Representative images showing $\alpha 4$ and PP2Ac co-localization. Scale bar, 50 μ M. Magnification $\times 200$; red: $\alpha 4$; green: PP2Ac; blue: DAPI (nuclei). (d) levels of $\alpha 4$ /PP2Ac complex as measured by immunoprecipitation (IP) by the anti-PP2Ac antibody from cells described in (a). After whole cell lysates were IP by the anti-PP2Ac antibody, precipitates were separated by SDS-PAGE and blotted by using anti- $\alpha 4$ or anti-PP2Ac antibody. (e) summarized data of cell migration after wounding in cells described in (a). Cell migration was assayed 6 h after removing part of the monolayer. Data are means \pm SE from 6 dishes. * $p < 0.05$ compared with null

C-siRNA did not alter cell viability as measured by Trypan blue staining (data not shown).

To examine the effect of PP2Ac silencing on cell migration, specific siRNA targeting PP2Ac mRNA (siPP2Ac) was used to inhibit PP2Ac expression in IEC-TRPC1 cells. As shown in Figure 3a, transfection with siPP2Ac for 48 h decreased PP2Ac levels by $\sim 80\%$, although it failed to affect the

levels of $\alpha 4$ protein. As expected, PP2Ac silencing by transfection with siPP2Ac also decreased $\alpha 4$ /PP2Ac complexes (by $\sim 75\%$) when compared with those observed in control cells and cells transfected with control siRNA (C-siRNA) (Figure 3b). Consistently, decreased $\alpha 4$ /PP2Ac association by PP2Ac silencing also suppressed cell migration (by $\sim 60\%$) after wounding (Figure 3c). These findings indicate that $\alpha 4$ /

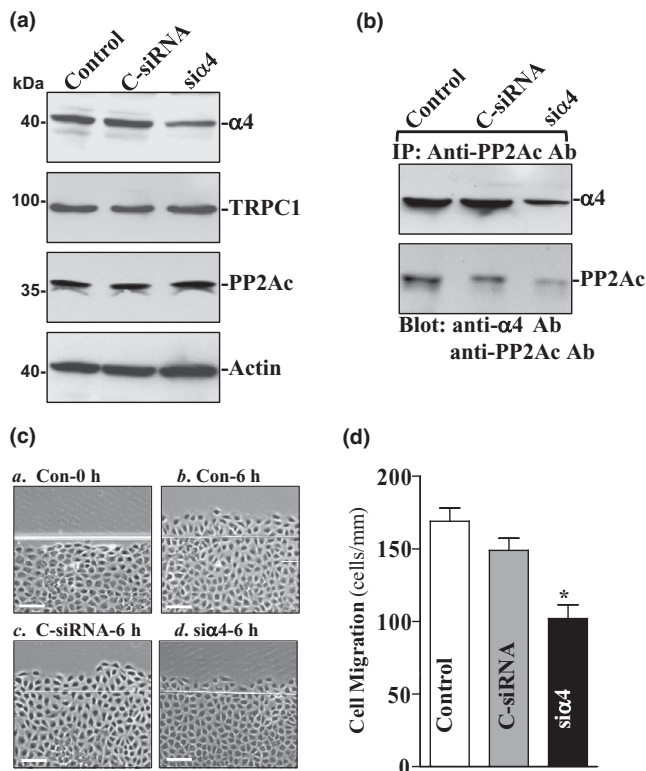


FIGURE 2 Effect of α 4 silencing on the levels of α 4/PP2Ac complex and cell migration. (a) representative immunoblots of α 4, TRPC1, and PP2Ac in IEC-TRPC1L1 cells transfected with si α 4 or C-siRNA for 48 h. (b) levels of α 4/PP2Ac complex in cells described in (a). Levels of α 4 and PP2Ac in IP complex were measured by Western blot analysis using specific antibodies. (c) images of cell migration after wounding: (a) 0 h after wounding; (b) 6 h after wounding; (c) 6 h after wounding in cells transfected with C-siRNA for 48 h; and (d) 6 h after wounding in cells transfected with si α 4 for 48 h. (d) summarized data of cell migration after wounding in cells described in (a). Values are means \pm SE from 6 dishes. * p < 0.05 compared with controls and cells transfected with C-siRNA

PP2Ac association is necessary for the stimulation of cell migration after wounding in IEC-TRPC1 cells.

3.3 | Elevation of cellular polyamine levels enhances expression of α 4 and PP2Ac and stimulates cell migration

Polyamines, including spermidine, spermine, and their precursor putrescine, are organic cations found in all eukaryotic cells and act as biological regulators of gut mucosal repair after acute injury in vivo as well as in vitro (Igarashi & Kashiwagi, 2019; Liu et al., 2009; Rao et al., 2020; Seiler & Raul, 2007; Tabor & Tabor, 1984). Polyamine biosynthesis is predominantly dependent on activity of the key rate-limiting enzymes ornithine decarboxylase (ODC) (Rao et al., 2020), and induced levels of cellular polyamines

promote intestinal mucosal repair primarily by enhancing early epithelial restitution after wounding (Rao et al., 1999, 2001; Rathor, Chung, et al., 2014). To determine the effect of cellular polyamines on α 4 and PP2Ac expression, two clonal populations of IECs stably overexpressing ODC (ODC-IEC) (Ouyang et al., 2015; Rathor, Chung, et al., 2014; Zou et al., 2012) were used in this study. These stable ODC-IECs exhibited very high levels of ODC protein and greater than 50-fold increase in ODC enzyme activity (Zou et al., 2012). Consistently, the levels of putrescine, spermidine, and spermine in ODC-IEC cells were increased by ~12-fold, ~2-fold, and ~25%, respectively, when compared with cells transfected with the control vector lacking *Odc* cDNA, as described in our previous studies (Ouyang et al., 2015; Wang et al., 2010; Zou et al., 2012). As shown in Figure 4, there was a substantial increase in the expression of α 4 and PP2Ac in ODC-IEC cells. The levels of α 4 protein increased by >3-fold in stable ODC-IEC cells as compared with those observed in cells transfected with the control vector. The levels of PP2Ac protein increased by ~2-fold. The increased expression of α 4 and PP2Ac in ODC-transfected cells was not simply due to clonal variation, since two stable clones, ODC-IEC-C1 and ODC-IEC-C2, showed similar responses. Increasing the levels of cellular polyamines by ectopic ODC overexpression also increased the epithelial restitution, as indicated by an increase in cell migration over the wounded area in stable ODC-IECs (Figure 4b). Similar results have been reported in our previous publications (Ouyang et al., 2015; Rathor, Chung, et al., 2014; Wang et al., 2010). These findings indicate that increased levels of α 4 and PP2Ac by polyamines stimulate epithelial restitution.

3.4 | Polyamine depletion decreases levels of α 4 and PP2Ac and repress cell migration

To further determine the role of endogenous polyamines in the regulation of α 4/PP2Ac interaction, IEC-6 cells were exposed to 5 mM DFMO (a specific inhibitor of polyamine biosynthesis) to deplete cellular polyamines. As reported previously (Guo et al., 2002; Rao et al., 1999), exposure to DFMO for 4 days completely depleted putrescine and spermidine and also substantially decreased spermine content. Polyamine depletion by DFMO inhibited expression of α 4 and PP2Ac, and the levels of α 4 and PP2Ac proteins in polyamine-deficient cells were decreased by ~60% and 95%, respectively (Figure 5a). Consistently, decreased α 4/PP2Ac complexes by polyamine depletion inhibited cell migration (Figure 5b and c). Exogenous polyamine putrescine (10 μ M) given together with DFMO not only prevented the decreased levels of the α 4/PP2Ac complex but also restored cell migration to near normal level after

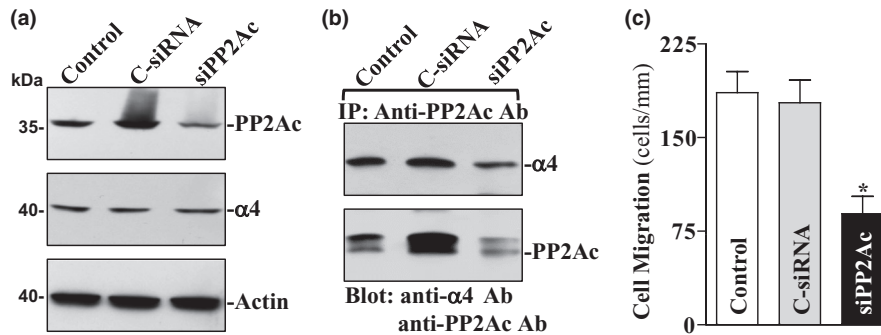


FIGURE 3 Effect of PP2Ac silencing on the levels of $\alpha 4$ /PP2Ac complex and cell migration. (a) representative immunoblots of PP2Ac and $\alpha 4$ in IEC-TRPC1L1 cells transfected with siPP2Ac or C-siRNA for 48 h. (b) levels of $\alpha 4$ /PP2Ac complex as measured by IP assay in cells described in (a). (c) summarized data of cell migration after wounding in cells described in (a) Values are means \pm SE from 6 dishes. * $p < 0.05$ compared with controls and cells transfected with C-siRNA

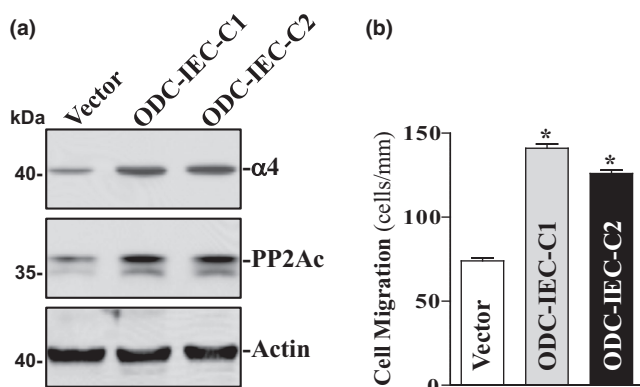


FIGURE 4 Changes in the levels of $\alpha 4$ and PP2Ac and cell migration after increasing the levels of cellular polyamines. (a) changes in $\alpha 4$ and PP2Ac protein levels in clonal (c) populations of ODC-IEC cells and control cells (Vector). IEC-6 cells were infected with either the retroviral vector containing the sequence encoding mouse ODC cDNA or control retroviral vector lacking ODC cDNA. Clones resistant to the selection medium containing 0.6 mg/ml G418 were isolated and screened for ODC expression. Levels of $\alpha 4$ and PP2Ac proteins were measured by Western blot analysis, and equal loading was monitored by actin immunoblotting. Three separate experiments were performed that showed similar results. (b) summarized data showing cell migration 6 h after wounding in cells described in (a). Values are means \pm SEM of data from 6 dishes. * $p < 0.05$ compared with Vector cells

wounding. Moreover, ectopic overexpression of $\alpha 4$ also partially prevented inhibition of cell migration induced by polyamine depletion (Figure 6). In this study, cells were exposed to DFMO for 2 days and then transfected with $\alpha 4$ expression vector for 48 h in the presence of DFMO. Ectopic overexpression of $\alpha 4$ significantly rescued cell migration after wounding in polyamine-deficient cells (Figure 6c). The number of cells migrating over the denuded area increased by $\sim 30\%$ in polyamine-deficient cells transfected with $\alpha 4$ expression vector compared to DFMO-treated cells transfected with empty vector (null). Taken together, these

results indicate that polyamine depletion inhibits intestinal epithelial restitution, at least partially, by downregulating $\alpha 4$ and PP2Ac expression and their interaction.

4 | DISCUSSION

In response to acute mucosal injury in the gut, damaged IECs are sloughed and remaining viable cells migrate to cover the wounded area rapidly, a process named as epithelial restitution (Dignass et al., 1994; Nusrat et al., 1992; Rao & Wang, 2016; Silen & Ito, 1985). This early epithelial restitution is crucial for maintenance of the intestinal epithelial integrity under physiological and pathological conditions, but its exact mechanism remains largely unknown. Our previous studies have shown that TRPC1 functions as a SOC channel in IECs and plays an important role in early epithelial restitution by increasing Ca^{2+} influx (Chung et al., 2015; Rao et al., 2006, 2010; Rathor, Zhuang, et al., 2014). The current study provides new evidence that increased association of $\alpha 4$ with PP2Ac is crucial for TRPC1-mediated stimulation of cell migration after wounding, thereby advancing our understanding of the mechanism underlying early epithelial restitution. $\alpha 4$ directly interacted with PP2Ac in IECs and this interaction was increased by TRPC1-mediated Ca^{2+} signaling. Induced $\alpha 4$ /PP2Ac complex in IEC-TRPC1 cells is necessary for increasing cell migration after wounding. Moreover, our findings also reveal that polyamines positively modulate expression of $\alpha 4$ and PP2Ac and enhance $\alpha 4$ /PP2Ac association.

The results reported herein clearly indicate that the increased levels of $\alpha 4$ and PP2Ac in stable IEC-TRPC1 cells were associated with an increase in cell migration after wounding. Increased levels of $\alpha 4$ /PP2Ac complexes are essential for stimulation of epithelial restitution in IEC-TRPC1 cells, since silencing $\alpha 4$ or PP2Ac inhibited formation of $\alpha 4$ /PP2Ac association and suppressed cell migration after wounding. It has been reported that $\alpha 4$ forms a stable complex with the catalytic (C)

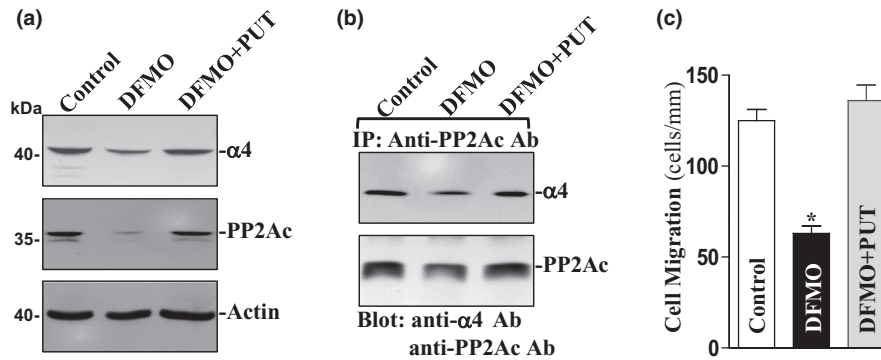


FIGURE 5 Changes in the levels of $\alpha 4$ and PP2Ac proteins, their association, and cell migration after polyamine depletion. (a) representative immunoblots of $\alpha 4$ and PP2Ac proteins. IEC-6 cells were grown in the medium containing DFMO (5 mM) alone or DFMO plus putrescine (Put, 10 μ M) for 4 days. Levels of $\alpha 4$ and PP2Ac proteins were measured by Western blot analysis, and equal loading was monitored by actin immunoblotting. Three separate experiments were performed that showed similar results. (b) levels of $\alpha 4$ and PP2Ac proteins in the complex IP by the anti-PP2Ac Ab from the samples described in (a). (c) summarized data showing cell migration 6 h after wounding in cells described in (a). Values are means \pm SEM of data from 6 dishes. * $p < 0.05$ compared with control cells or cells treated with DFMO plus Put

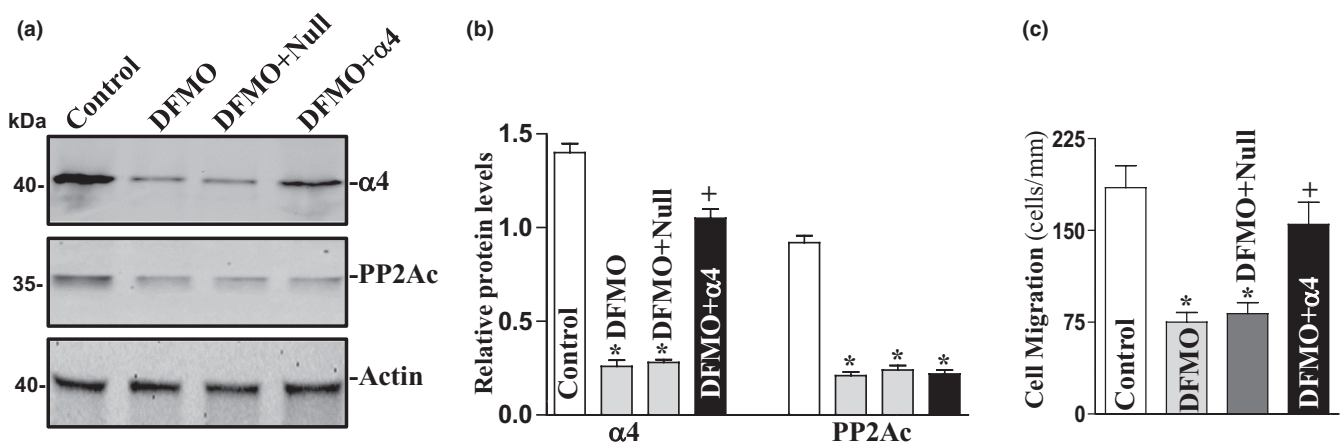


FIGURE 6 Effect of $\alpha 4$ overexpression on cell migration in polyamine-deficient cells. (a) representative immunoblots of $\alpha 4$ and PP2Ac. IECs were exposed to 5 mM DFMO for 2 days and then transfected with either $\alpha 4$ expression vector or empty vector (Null). By 48 h after transfection in the presence of DFMO, levels of $\alpha 4$ and PP2Ac protein levels were measured by Western blot analysis. Three experiments were performed that showed similar results. (b) quantitative analysis of western immunoblots by densitometry that were corrected for actin loading from cells described in (a). Values are means \pm SEM; * $p < 0.05$ compared with control cells. ⁺ $p < 0.05$ versus DFMO alone. (c) summarized data showing cell migration 6 h after wounding in cells described in (a). Values are means \pm SEM of data from 6 dishes. * $p < 0.05$ compared with control cells. ⁺ $p < 0.05$ versus DFMO alone

subunit of serine/threonine PP2A or with PP4 and PP6 and that PP2A heterotrimers are relatively unstable in response to stressful environments. However, overexpression of $\alpha 4$ results in a faster recovery of PP2A activity (Janssens & Rebollo, 2012; Kong et al., 2009; LeNoue-Newton et al., 2016). Our previous studies have shown that the levels of $\alpha 4$ protein increased remarkably 1 h after wounding and this induction in $\alpha 4$ levels was associated with an increase in the cellular abundance of PP2A. Further studies reveal that $\alpha 4$ is required for intestinal mucosal maturation, whereas $\alpha 4$ deletion in IECs alters proliferation, migration, apoptosis, and cell-to-cell interaction in mice (Chung et al., 2018). In another study, Kong et al defined a novel role of $\alpha 4$ in the control of cell spreading and migration in fibroblasts (Kong et al., 2007). The levels of GTP-bound

Rac1 decrease in fibroblasts lacking $\alpha 4$, whereas ectopically expressed $\alpha 4$ restores Rac1 activity and promotes cell migration (Kong et al., 2007). Moreover, other evidence also exists supporting a pro-proliferative influence of $\alpha 4$. For examples, cell proliferation is stimulated by ectopic $\alpha 4$ overexpression in several cancer cells but inhibited by $\alpha 4$ silencing (Chen et al., 2011; Liu et al., 2014). Although the expression patterns of $\alpha 4$ and PP2Ac in damaged IG mucosa in vivo remain unknown, our ongoing studies using gut mucosal injury model in mice will provide necessary information in the future.

The results presented here also show that increasing cellular polyamines by overexpressing ODC increased the protein levels $\alpha 4$ and PP2Ac and enhanced their association, thus stimulating cell migration. In contrast, depletion

of cellular polyamines decreased levels of $\alpha 4$ and PP2Ac complexes and inhibited restitution. In polyamine-deficient cells, overexpression of $\alpha 4$ partially rescued cell migration. Polyamines are potent regulators of gut mucosal repair (Rao et al., 2020; Timmons et al., 2012; Wang & Johnson, 1991), whereas inhibition of polyamine biosynthesis represses early epithelial repair by inactivating multiple signaling pathways including TRPC1/ Ca^{2+} signaling (Chung et al., 2018; Rathor, Zhuang, et al., 2014). Polyamines enhance gut mucosal repair by regulating multiple signaling pathways including small GTP-binding proteins such as RhoA and Rac1 (Chung et al., 2015; Rao et al., 2001, 2008), STIM1 signaling (Rao et al., 2010, 2012; Rathor, Zhuang, et al., 2014), and c-Jun/PLC- $\gamma 1$ pathways (Rao et al., 2008; Wang et al., 2017). The current studies provide an additional evidence showing that increased levels of $\alpha 4$ and PP2Ac and their interaction also contribute to stimulation of gut epithelial restitution by polyamines.

In summary, our results indicate that activation of TRPC1-mediated Ca^{2+} signaling in stable IEC-TRPC1 cells induces expression of $\alpha 4$ and PP2Ac and thus increases the levels of $\alpha 4$ /PP2Ac complex. The increased interaction of $\alpha 4$ with PP2Ac is essential for stimulation of cell migration after wounding in IECs overexpressing TRPC1. Specific inhibition of $\alpha 4$ or PP2Ac prevents formation $\alpha 4$ /PP2Ac complexes and represses cell migration after wounding. Moreover, increasing the levels of cellular polyamines also enhances expression of $\alpha 4$ and PP2Ac in IECs, whereas polyamine depletion decreases cellular $\alpha 4$ and PP2Ac abundances, suggesting that polyamines promote intestinal epithelial restitution at least partially by enhancing $\alpha 4$ /PP2Ac complex. Together, our results indicate that increased $\alpha 4$ /PP2Ac associations by TRPC1-mediated Ca^{2+} signal and polyamines play an important role in the stimulation of intestinal epithelial restitution after wounding.

CONFLICT OF INTEREST

None.

ORCID

Jaladanki N. Rao  <https://orcid.org/0000-0002-5669-8992>

REFERENCES

- Aihara, E., & Montrose, M. H. (2014). Importance of Ca^{2+} in gastric epithelial restitution-new views revealed by real-time in vivo measurements. *Current Opinion in Pharmacology*, *19*, 76–83. <https://doi.org/10.1016/j.coph.2014.07.012>
- Basu, S. (2011). PP2A in the regulation of cell motility and invasion. *Current Protein and Peptide Science*, *12*, 3–11.
- Chen, L. P., Lai, Y. D., Li, D. C., Zhu, X. N., Yang, P., Li, W. X., Zhu, W., Zhao, J., Li, X. D., Xiao, Y. M., Lin, Y. C., Zeng, J. L., Zhang, S. X., Liu, C. X., Li, Z. F., Zeng, X. W., Lin, Z. N., Zhuang, Z. X., & Chen, W. (2011). $\alpha 4$ is highly expressed in carcinogen-transformed human cells and primary human cancers. *Oncogene*, *30*, 2943–2953.
- Chung, H. K., Rathor, N., Wang, S. R., Wang, J. Y., & Rao, J. N. (2015). RhoA enhances store-operated Ca^{2+} entry and intestinal epithelial restitution by interacting with TRPC1 after wounding. *American Journal of Physiology. Gastrointestinal and Liver Physiology*, *309*, G759–G767.
- Chung, H. K., Wang, S. R., Xiao, L., Rathor, N., Turner, D. J., Yang, P., Gorospe, M., Rao, J. N., & Wang, J. Y. (2018). $\alpha 4$ coordinates small intestinal epithelium homeostasis by regulating stability of HuR. *Molecular and Cellular Biology*, *38*, e00631–e717.
- Dignass, A. U., Tsunekawa, S., & Podolsky, D. K. (1994). Fibroblast growth factors modulate intestinal epithelial cell growth and migration. *Gastroenterology*, *106*, 1254–1262. [https://doi.org/10.1016/0016-5085\(94\)90017-5](https://doi.org/10.1016/0016-5085(94)90017-5)
- Fielhaber, J. A., Han, Y. S., Tan, J., Xing, S., Biggs, C. M., Joung, K. B., & Kristof, A. S. (2009). Inactivation of mammalian target of rapamycin increases STAT1 nuclear content and transcriptional activity in $\alpha 4$ - and protein phosphatase 2A-dependent fashion. *Journal of Biological Chemistry*, *284*, 24341–24353.
- Guo, X., Rao, J. N., Liu, L., Rizvi, M., Turner, D. J., & Wang, J. Y. (2002). Polyamines regulate β -catenin tyrosine phosphorylation via Ca^{2+} during intestinal epithelial cell migration. *American Journal of Physiology. Cell Physiology*, *283*, C722–C734.
- Guo, X., Rao, J. N., Liu, L., Zuo, T. T., Turner, D. J., Bass, B. L., & Wang, J. Y. (2003). Regulation of adherens junctions and epithelial paracellular permeability: Novel function for polyamines. *American Journal of Physiology. Cell Physiology*, *285*, C1174–C1187.
- Harter, J. L. (1960). Critical values for Duncan's new multiple range test. *Biometrics*, *16*, 671–685. <https://doi.org/10.2307/2527770>
- Herzog, F., Kahraman, A., Boehringer, D., Mak, R., Bracher, A., Walzthoeni, T., Leitner, A., Beck, M., Hartl, F. U., Ban, N., Malmström, L., & Aebersold, R. (2012). Structural probing of a protein phosphatase 2A network by chemical cross-linking and mass spectrometry. *Science*, *337*, 1348–1352. <https://doi.org/10.1126/science.1221483>
- Igarashi, K., & Kashiwagi, K. (2019). The functional role of polyamines in eukaryotic cells. *International Journal of Biochemistry & Cell Biology*, *107*, 104–115. <https://doi.org/10.1016/j.biocel.2018.12.012>
- Inui, S., Kuwahara, K., Mizutani, J., Maeda, K., Kawai, T., Nakayasu, H., & Sakaguchi, N. (1995). Molecular cloning of a cDNA clone encoding a phosphoprotein component related to the Ig receptor-mediated signal transduction. *The Journal of Immunology*, *154*, 2714–2723.
- Janssens, V., & Rebollo, A. (2012). The role and therapeutic potential of Ser/Thr phosphatase PP2A in apoptotic signalling networks in human cancer cells. *Current Molecular Medicine*, *12*, 268–287.
- Jiang, L. P., Wang, S. R., Chung, H. K., Buddula, S., Wang, J. Y., & Rao, J. N. (2019). miR-222 represses expression of zipcode binding protein-1 and phospholipase C- $\gamma 1$ in intestinal epithelial cells. *American Journal of Physiology. Cell Physiology*, *316*, C415–C423.
- Kong, M., Bui, T. V., Ditsworth, D., Gruber, J. J., Goncharov, D., Krymskaya, V. P., Lindsten, T., & Thompson, C. B. (2007). The PP2A-associated protein $\alpha 4$ plays a critical role in the regulation of cell spreading and migration. *Journal of Biological Chemistry*, *282*, 29712–29720. <https://doi.org/10.1074/jbc.M703159200>
- Kong, M., Ditsworth, D., Lindsten, T., & Thompson, C. B. (2009). $\alpha 4$ is an essential regulator of PP2A Phosphatase activity. *Molecular Cell*, *36*, 51–60.

- Kong, M., Fox, C. J., Mu, J., Solt, L., Xu, A., Cinalli, R. M., Birnbaum, M. J., Lindsten, T., & Thompson, C. B. (2004). The PP2A-associated protein $\alpha 4$ is an essential inhibitor of apoptosis. *Science*, *306*, 695–698.
- LeNoue-Newton, M. L., Wadzinski, B. E., & Spiller, B. W. (2016). The three type 2A protein phosphatases, PP2Ac, PP4c and PP6c, are differentially regulated by Alpha4. *Biochemical and Biophysical Research Communications*, *475*, 64–69. <https://doi.org/10.1016/j.bbrc.2016.05.036>
- LeNoue-Newton, M., Watkins, G. R., Zou, P., Germane, K. L., McCorvey, L. R., Wadzinski, B. E., & Spiller, B. W. (2011). The E3 ubiquitin ligase- and protein phosphatase 2A (PP2A)-binding domains of the $\alpha 4$ protein are both required for $\alpha 4$ to inhibit PP2A degradation. *Journal of Biological Chemistry*, *286*, 17665–17671.
- Liu, J., Cai, M., Chen, J., Liao, Y., Mai, S., Li, Y., Huang, X., Liu, Y., Zhang, J., Kung, H., Zeng, Y., Zhou, F., & Xie, D. (2014). $\alpha 4$ contributes to bladder urothelial carcinoma cell invasion and/or metastasis via regulation of E-cadherin and is a predictor of outcome in bladder urothelial carcinoma patients. *European Journal of Cancer*, *50*, 840–851.
- Liu, L., Guo, X., Rao, J. N., Zou, T., Xiao, L., Yu, T., Timmons, J. A., Turner, D. J., & Wang, J. Y. (2009). Polyamines regulate E-cadherin transcription through c-Myc modulating intestinal epithelial barrier function. *American Journal of Physiology. Cell Physiology*, *296*, C801–C810. <https://doi.org/10.1152/ajpcell.00620.2008>
- Liu, L., Zhuang, R., Xiao, L., Chung, H. K., Luo, J., Turner, D. J., Luo, J., Turner, D. J., Rao, J. N., Gorospe, M., & Jian-Ying Wang, J. Y. (2017). HuR enhances early restitution of the intestinal epithelium by increasing Cdc42 translation. *Molecular and Cellular Biology*, *37*, e00574-16.
- McConnell, J. L., Watkins, G. R., Soss, S. E., Franz, H. S., McCorvey, L. R., Spiller, B. W., Chazin, W. J., & Wadzinski, B. E. (2010). $\alpha 4$ is a Ubiquitin-binding protein that regulates protein Serine/Threonine Phosphatase 2A Ubiquitination. *Biochemistry*, *49*, 1713–1718.
- Nusrat, A., Delp, C., & Madara, J. L. (1992). Intestinal epithelial restitution: Characterization of cell culture model and mapping of cytoskeletal elements in migrating cells. *Journal of Clinical Investigation*, *89*, 1501–1511.
- Ouyang, M., Su, W., Xiao, L., Rao, J. N., Jiang, L., Li, Y., Turner, D. J., Gorospe, M., & Wang, J. Y. (2015). Modulation by miR-29b of intestinal epithelium homeostasis through the repression of menin translation. *The Biochemical Journal*, *465*, 315–323. <https://doi.org/10.1042/BJ20141028>
- Quaroni, A., Wands, J., Trelstad, R. L., & Isselbacher, K. J. (1979). Epithelioid cell cultures from rat small intestine. *Journal of Cell Biology*, *80*, 248–265.
- Rao, J. N., Li, J., Li, L., Bass, B. L., & Wang, J. Y. (1999). Differentiated intestinal epithelial cells exhibit increased migration through polyamines and myosin II. *American Journal of Physiology. Gastrointestinal and Liver Physiology*, *277*, G1149–G1158. <https://doi.org/10.1152/ajpgi.1999.277.6.G1149>
- Rao, J. N., Li, L., Golovina, V. A., Platoshyn, O., Strauch, E. D., Yuan, J. X., & Wang, J. Y. (2001). Ca^{2+} -RhoA signaling pathway required for polyamine-dependent intestinal epithelial cell migration. *American Journal of Physiology. Cell Physiology*, *280*, C993–C1007.
- Rao, J. N., Liu, S. V., Zou, T., Liu, L., Xiao, L., Zhang, X., Bellevance, E., Yuan, J. X., & Wang, J. Y. (2008). Rac1 promotes intestinal epithelial restitution by increasing Ca^{2+} influx through interaction with phospholipase C- $\gamma 1$ after wounding. *American Journal of Physiology. Cell Physiology*, *295*, C1499–C1509.
- Rao, J. N., Platoshyn, O., Golovina, V. A., Liu, L., Zou, T., Marasa, B. S., Turner, D. J., Yuan, J. X., & Wang, J. Y. (2006). TRPC1 functions as a store-operated Ca^{2+} channel in intestinal epithelial cells and regulates early mucosal restitution after wounding. *American Journal of Physiology. Gastrointestinal and Liver Physiology*, *290*, G782–G792.
- Rao, J. N., Rathor, N., Zhuang, R., Zou, T., Liu, L., Xiao, L., Turner, D. J., & Wang, J. Y. (2012). Polyamines regulate intestinal epithelial restitution through TRPC1-mediated Ca^{2+} signaling by differentially modulating STIM1 and STIM2. *American Journal of Physiology. Cell Physiology*, *303*, C308–C317.
- Rao, J. N., Rathor, N., Zou, T., Liu, L., Xiao, L., Yu, T. X., Cui, Y. H., & Wang, J. Y. (2010). STIM1 translocation to the plasma membrane enhances intestinal epithelial restitution by inducing TRPC1-mediated Ca^{2+} signaling after wounding. *American Journal of Physiology Cell Physiology*, *299*, C579–C588.
- Rao, J. N., & Wang, J. Y. (2016). Regulation of gastrointestinal mucosal growth. 2nd edition, Text book-ebook Series. Integrated Systems Physiology: from Molecule to function to disease#15 (eds) Neil D. Granger and Joey P. Granger, Morgan & Claypool Life sciences, 8(4): i-132.
- Rao, J. N., Xiao, L., & Wang, J. Y. (2020). Polyamines in gut epithelial renewal and barrier function. *Physiology*, *35*, 328–337. <https://doi.org/10.1152/physiol.00011.2020>
- Rathor, N., Chung, H. K., Wang, S. R., Qian, M., Turner, D. J., Wang, J. Y., & Rao, J. N. (2018). β -PIX plays an important role in regulation of intestinal epithelial restitution by interacting with GIT1 and Rac1 after wounding. *American Journal of Physiology. Gastrointestinal and Liver Physiology*, *314*, G399–G407. <https://doi.org/10.1152/ajpgi.00296.2017>
- Rathor, N., Chung, H. K., Wang, S. R., Wang, J. Y., Turner, D. J., & Rao, J. N. (2014). Caveolin-1 enhances rapid mucosal restitution by activating TRPC1-mediated Ca^{2+} signaling. *Physiological Reports*, *2*, e12193.
- Rathor, N., Zhuang, R., Wang, J. Y., Donahue, J. M., Turner, D. J., & Rao, J. N. (2014). Src-mediated caveolin-1 phosphorylation regulates intestinal epithelial restitution by altering Ca^{2+} influx after wounding. *American Journal of Physiology. Gastrointestinal and Liver Physiology*, *306*, G650–G658.
- Seiler, N., & Raul, F. (2007). Polyamines and the intestinal tract. *Critical Reviews in Clinical Laboratory Sciences*, *44*, 365–411.
- Sents, W., Ivanova, E., Lambrecht, C., Haesen, D., & Janssens, V. (2013). The biogenesis of active protein phosphatase 2A holoenzymes: A tightly regulated process creating phosphatase specificity. *FEBS Journal*, *280*, 644–661.
- Silen, W., & Ito, S. (1985). Mechanism for rapid-epithelialization of the gastric mucosal surface. *Annual Review of Physiology*, *47*, 217–229.
- Tabor, C. W., & Tabor, H. (1984). Polyamines. *Annual Review of Biochemistry*, *53*, 749–790. <https://doi.org/10.1146/annurev.ev.bi.53.070184.003533>
- Timmons, J., Chang, E. T., Wang, J. Y., & Rao, J. N. (2012). Polyamines and gut mucosal homeostasis. *Journal of Gastrointestinal & Digestive System*, *2*(Suppl 7), 1–20.
- Wang, H., & Jiang, Y. (2003). The Tap42-protein phosphatase type 2A catalytic subunit complex is required for cell cycle-dependent distribution of actin in yeast. *Molecular and Cellular Biology*, *23*, 3116–3125.

- Wang, J. Y., & Johnson, L. R. (1991). Polyamines and ornithine decarboxylase during repair of duodenal mucosa after stress in rats. *Gastroenterology*, *100*, 333–343.
- Wang, P. Y., Rao, J. N., Zou, T., Liu, L., Xiao, L., Yu, T. X., Turner, D. J., Gorospe, M., & Wang, J. Y. (2010). Post-transcriptional regulation of MEK-1 by polyamines through the RNA-binding protein HuR modulating intestinal epithelial apoptosis. *The Biochemical Journal*, *426*, 293–306. <https://doi.org/10.1042/BJ20091459>
- Wang, P. Y., Wang, S. R., Xiao, L., Chen, J., Wang, J. Y., & Rao, J. N. (2017). c-Jun enhances intestinal epithelial restitution after wounding by increasing phospholipase C- γ 1 transcription. *American Journal of Physiology Cell Physiology*, *312*, C367–C375.
- Watkins, G. R., Wang, N., Mazaloukas, M. D., Gomez, R. J., Guthrie, C. R., Kraemer, B. C., Schweiger, S., Spiller, B. W., & Wadzinski, B. E. (2012). Monoubiquitination promotes calpain cleavage of the protein phosphatase 2A (PP2A) regulatory subunit α 4, altering PP2A stability and microtubule-associated protein phosphorylation. *Journal of Biological Chemistry*, *287*, 24207–24215.
- Zhang, Y., Cai, J. Z., Xiao, L., Chung, H. K., Ma, X. X., Chen, L. L., Rao, J. N., & Wang, J. Y. (2020). RNA-binding protein HuR regulates translation of vitamin D receptor modulating rapid epithelial restitution after wounding. *American Journal of Physiology-Cell Physiology*, *319*(1), C208–C217. <https://doi.org/10.1152/ajpce.11.00009.2020>
- Zou, T., Rao, J. N., Liu, L., Xiao, L., Cui, Y. H., Jiang, Z., Ouyang, M., Donahue, J. M., & Wang, J. Y. (2012). Polyamines inhibit the assembly of stress granules in normal intestinal epithelial cells regulating apoptosis. *American Journal of Physiology-Cell Physiology*, *303*(1), C102–C111. <https://doi.org/10.1152/ajpce.11.00009.2012>

How to cite this article: Rathor N, Chung HK, Song J-L, Wang SR, Wang J-Y, Rao JN. TRPC1-mediated Ca^{2+} signaling enhances intestinal epithelial restitution by increasing α 4 association with PP2Ac after wounding. *Physiol Rep*. 2021;9:e14864. <https://doi.org/10.14814/phy2.14864>