

Optimization of methods for peripheral blood mononuclear cells isolation and expansion of human gamma delta T cells

Mohd Wajid Ali Khan^{1,2*}, Ahmed Al Otaibi¹, Subuhi Sherwani³, Eida Mohammed Alshammari¹, Salma Ahmed Al-Zahrani¹, Wahid Ali Khan⁴, Abdulmohsen Khalaf Dhahi Alsukaibi¹, Sultan Alouffi^{2,5} & Shahper Nazeer Khan⁶

¹Department of Chemistry, College of Sciences, University of Ha'il, Ha'il-2440, Saudi Arabia; ²Molecular Diagnostic and Personalised Therapeutics Unit, University of Ha'il, Ha'il-2440, Saudi Arabia; ³Department of Biology, College of Sciences, University of Ha'il, Ha'il-2440, Saudi Arabia; ⁴Department of Clinical Biochemistry, College of Medicine, King Khalid University, Abha-62529, Saudi Arabia; ⁵Department of Clinical Laboratory Sciences, College of Applied Medical Sciences, University of Ha'il, Ha'il-2440, Saudi Arabia; ⁶Interdisciplinary Nanotechnology Centre, Aligarh Muslim University, Aligarh-202002, U.P., India; Mohd Wajid Ali Khan - Email: wajidkhan11@gmail.com; mw.khan@uoh.edu.sa; * Corresponding author

Author Contacts:

Mohd WA Khan - mw.khan@uoh.edu.sa; Ahmed A Otaibi - ahmed.alotaibi@uoh.edu.sa; Subuhi Sherwani - s.sherwani@uoh.edu.sa; Eida M Alshammari - eida.alshammari@uoh.edu.sa; Salma A Al-Zahrani - s.alzahrane@uoh.edu.sa; Wahid A Khan - wkhan@kku.edu.sa; Abdulmohsen KD Alsukaibi - a.alsukaibi@uoh.edu.sa; Sultan Alouffi - s.alouffi@uoh.edu.sa, Shahper N Khan - snkhan_co@myamu.ac.in

Received February 28, 2021; Revised March 30, 2021; Accepted March 30, 2021, Published March 31, 2021

DOI: 10.6026/97320630017460

Declaration on Publication Ethics:

The authors state that they adhere with COPE guidelines on publishing ethics as described elsewhere at <https://publicationethics.org/>. The authors also undertake that they are not associated with any other third party (governmental or non-governmental agencies) linking with any form of unethical issues connecting to this publication. The authors also declare that they are not withholding any information that is misleading to the publisher in regard to this article.

Abstract:

Human V γ 9/V δ 2 T cells ($\gamma\delta$ T cells) are immune surveillance cells both in innate and adaptive immunity and are a possible target for anticancer therapies, which can induce immune responses in a variety of cancers. Small non-peptide antigens such as zoledronate can do activation and expansion of T cells in vitro. It is evident that for adoptive cancer therapies, large numbers of functional cells are needed into cancer patients. Hence, optimization of methods needs to be carried out for the efficient expansion of these T cells. Standardization of peripheral blood mononuclear cells (PBMCs) isolation was devised. Cytokines (interleukin 2 (IL-2) and interleukin 15 (IL-15)) and zoledronate were also standardized for different concentrations. It was found that an increased number of PBMCs were recovered when washing was done at 1100 revolution per minute (rpm). Significantly high expansion fold was (2524 ± 787 expansion fold) achieved when stimulation of PBMCs was done with 1 μ M of zoledronate and both cytokines IL-2 and IL-15 supported the expansion and survival of cells

at the concentrations of 100 IU/ml and 10 ng/ml respectively. 14-day cultures showed highly pure ($91.6 \pm 5.1\%$) and live ($96.5 \pm 2.5\%$) expanded $\gamma\delta$ T cells. This study aimed to standardize an easy to manipulate technique for the expansion of $\gamma\delta$ T cells, giving a higher yield.

Keywords: $\gamma\delta$ T cell, expanded, cytokines, zoledronate, cancer therapeutics, PBMCs

Background:

Cancer is a disease distinguished by abnormal growth of cells, which leads to morbidity and mortality worldwide, with approximately 18.1 million new cases and 9.6 million cancer deaths according to the International Agency for Research on Cancer in 2018 [1]. It is estimated that in 2020, 1.8 million new cancer cases would be diagnosed and about 606,520 cancer-related mortalities are predicted in the US [2]. Immune cells play an integral role in tumour cell control (immunosurveillance), and immune defects are frequently associated with cancer development and disease progression [3]. Consequently, corrective measures aimed at restoring anti-tumour immunity are a major focus in current research to develop novel cancer immunotherapies. T-cell based cancer immunotherapy can be carried out using *in vitro* expanded and differentiated effectors cells. The activated immune cells are transferred back to the patients as personalized cellular vaccines. These cells either target tumor cells directly or eliminate them by stimulating the immune response [4]. Over the last decade, human $V\gamma 9/V\delta 2$ T cells ($\gamma\delta$ T cells) have become an ideal effector cell option for cancer immunotherapy. The two main types of T lymphocytes found in human peripheral blood are $\alpha\beta$ and $\gamma\delta$ T cells. These $V\gamma 9/V\delta 2$ cells express a T cell receptor (TCR) comprising of γ and δ chains, that are unique to humans and higher primates [5]. $\gamma\delta$ T cells are atypical T cells that can recognize and lyse diverse cancer cells in a non-major histocompatibility complex (MHC) restricted manner, highlighting their potential for cancer immunotherapy. They vigorously contribute to the anti-tumor immune response in many cancers (colon, breast, lymphoma, myeloma, melanoma, lungs, ovary and prostate) [6]. $\gamma\delta$ T cells perform these activities through cytotoxicity against tumor/infected cells like $CD8^+$ T cells/NK cells and by regulating other immune cells (antigen presentation function) such as dendritic cells, macrophages and B cells [7-9]. Human PBMCs usually contain 1-10% of circulating $\gamma\delta$ T cells [5]. $\gamma\delta$ T cells offer a selective and non-MHC restricted response to phosphoantigens and, indirectly, to aminobisphosphonates [5]. They also behave as antigen presenting cells (APCs) [10]. The $\gamma\delta$ cells-and are excellent at cross-presentation of protein antigens, which is relevant for $CD8^+$ T cell driven anti-tumour immunity [10]. Wada *et al.* [11] used *ex vivo*-expanded $\gamma\delta$ T-cells for the treatment of gastric cancer linked malignant ascites in the peritoneum. Injection of $\gamma\delta$ T-cells into the peritoneal cavity allow effective access to tumor cells. Computed

tomography revealed significant reduction in the ascite volume in two patients out of seven, with most commonly observed treatment related side effects as mild fever and zoledronate-induced hypocalcemia [11]. $\gamma\delta$ T cells have the potential to be used as cancer therapeutics. Large numbers of such expanded cells are infused back into the cancer patients. In this study, we standardized and established a protocol for the proliferation of large numbers of $\gamma\delta$ T cells with high purity, using minimum amounts of human blood.

Materials and methodology:

Chemicals and reagents:

RPMI-1640 medium, Lymphoprep™, 0.9% saline (NaCl), Falcon tube (50 ml), Millipore filter (0.22 μ m), syringe, 10% Foetus calf serum (FCS), L-glutamine (200mM; 100X), Pen/strep (10,000 units/ml pen & 10,000 units/ml strep), MEM Sodium pyruvate (100mM), non-essential amino acids (10mM; 100X). IL-2 (100 IU/ml) were from GIBCO Life Technologies (USA). Interleukin-2 and 15 were purchased from Miltenyi Biotec (Germany). Monoclonal antibodies (mAbs) specific for CD3, CD4, CD8, TCR- $V\gamma 9$ were from Beckman Coulter (USA). Live/Dead fixable aqua dead cell stain kit was from Invitrogen-Life Technologies (USA). Immunoglobulin from human and zoledronic acid injection (4 mg) were purchased from Sigma Aldrich and Cipla respectively.

Collection of fresh blood samples:

Venous blood samples were collected from healthy individuals (males aged 25-45 years) with their full consent. This study was performed in accordance with the ethical standards as given in the Helsinki Declaration of 1975 and revised in 2000. Ethical approval for this study was received from the institution. The following procedure was adopted for venous blood collection; a proper sized needle was attached to the syringe. For best visualization of the draw site was positioned and tourniquet ideally applied 3-4 inches above the puncture site. The participants were instructed to make a fist and hold it without pumping their hand. The venipuncture site was prepared using a Chlorhexadine wipe followed by air-drying. The needle was inserted into the skin, at an angle of 15 – 30 degree to the skin, into the vein. All the standard safety measures were followed while drawing blood.

Preparation of RPMI medium:

An unopened RPMI-1650 (500 ml) was opened under a laminar flow in a sterile environment and 70 ml of medium was removed. 50 ml (10%) FCS (heat inactivated), 5 ml L-glutamine (200mM; 100X), 5 ml Pen/strep, 5 ml MEM Sodium Pyruvate, and 5 ml MEM non-essential amino acids were added to this. To avoid contamination, all solutions were passed through Millipore filters (0.22 μ M) before being added to RPMI medium.

Peripheral blood mononuclear cells Isolation:

A volume of 5 ml fresh blood was drawn using the method stated above. A 50 ml sterile falcon tube was taken to which 5 ml heparin/EDTA was added. Blood from the syringe was transferred to this tube and tilting the tube sideways facilitated mixing with EDTA. Five ml lymphoprep™ was added to a sterile 15 ml falcon tube and brought to room temperature. Blood was added to the lymphoprep™, by tilting the tube and placing the tip of the pipette on the surface of the upper layer while pouring gently. Two layers separated out: blood in the upper layer and lymphoprep™ at the bottom. The tube was centrifuged at 1680 rpm for 22 min at 18°C with acceleration set at 2 and deceleration at 0. After centrifugation, four layers were visible; the uppermost was plasma, the second hazy thin layer contained PBMCs, third layer was lymphoprep™ and bottom most layer contained RBCs. Plasma was removed by pipetting and only a few ml (2-3 ml) was left in the tube so as not to disturb any leftover PBMCs. 10 ml sterile and cold saline (0.9% NaCl) was taken in a sterile 15 ml falcon tube. The remaining plasma and the hazy layer on top of the lymphoprep™ contained PBMCs. Approximately 3-4 ml solution was collected and added to a 15 ml tube with 10 ml normal saline and centrifuged at 1100 rpm for 10 min at 4°C. After centrifugation, the supernatant was removed, first by pipetting and later using 3 ml dropper so that the supernatant could be decanted carefully, and the pellet remained undisturbed. 1 ml saline was added to the pellet and mixed well. The tip of the pipette remained inside the solution to avoid any bubbles while mixing. A further 9 ml saline was added, and the solution centrifuged at 1100 rpm for 10 min at 4°C. After centrifugation, the supernatant was removed. 1 ml saline was added again to the pellet, mixed well and an additional 9 ml saline was also added. To estimate the number of PBMCs per mL at this stage, 20 μ L of the sample was removed and the cells counted with the help of a Neubauer chamber, under a microscope ($X \times 10,000 = Y$ million/ml). PBMC numbers usually ranged between 1-2 million cells/mL bloods. The solution was centrifuged again at 1100 rpm for 10 min at 18°C. After centrifugation, the supernatant was removed, and the pellet retained. 1 ml complete RPMI (pre-warmed) medium was added to the pellet and mixed well. The remaining volume required for an experiment was made up with

complete RPMI medium. For the experiment described below 9 ml RPMI medium was added to the cells to make up the volume up to 10 ml, which contained 1 million/ml PBMCs.

In vitro expansion of $\gamma\delta$ T cells:

$\gamma\delta$ T cell in isolated PBMCs were stimulated using 1 μ M zoledronate and were cultured in complete RPMI 1640 medium at a density of 10⁶ cells/ml in 24-well plate and kept in CO₂ (5%) incubator at 37°C. The level of water in the incubator was checked often to prevent decrease in levels. Cytokines IL-2 (100 IU/ml) and IL-15 (20 ng/ml) were added to the culture at day 3, 6, 8 and 11 and cells were split into fresh medium. At day 14, the percent $\gamma\delta$ T cells in culture were evaluated by flow cytometry together with the viability. Expansion fold was also determined.

Cell surface staining;

Approximately 50,000 - 500,000 PBMCs or expanded were plated in a total volume of up to 250 μ l. These were centrifuge at 1100 rpm for 3 min at 4°C in a centrifuge. The pellets of cells were then washed with 200 μ l phosphate buffer saline (PBS). Three microliters of Live/Dead fixable aqua dead cell stain were added and incubated for 15 min in the dark followed by the addition of 200 μ l PBS contains 2% FCS (FACS buffer). Post incubation, cells were centrifuged (1100 rpm for 3 mins) and the supernatant discarded. Cells were blocked with 100 μ l of 1:1000 diluted human IgG for 15 min on ice. After incubation cells were centrifuged (1100 rpm for 3 mins) and throw the supernatant. Then stained cells with 40 μ l cocktails of antibodies & isotype by further incubating for 20 min on ice in the dark. Approximately 160 μ l FACS buffer was added after incubation and then the mixture was centrifuged (1100 rpm for 3 mins). Finally, cells were resuspended in 100 μ l FACS buffer and are ready for analysis at flowcytometer (Beckman Coulter Flowcytometer, Navios A52101).

Results:**Optimization of PBMCs Isolation from fresh blood:**

Proliferated $\gamma\delta$ T cell numbers depend on the starting number of cells. For this reason, the PBMC washing procedure during isolation from human blood was standardized to recover as many cells as possible. For the optimization process, PBMCs were centrifuged at different rpm (1400, 1300, 1100, 900, 800 and 600) (Table 1). Significantly higher numbers of PBMCs were recovered when washings of PBMCs was done at 1100 rpm as compared to other rpms (1400, 1300, 900, 800 and 600). After comparing the centrifugation speeds used during the washing procedure of PBMCs it was evident that 1100 rpm is an optimal speed to be used for future washing steps.

Table 1: Isolation of PBMCs from fresh blood at constant time (10 minutes) for different revolutions per minute.

RPM	After 1 st Wash		After 2 nd Wash		Recovered Live PBMCs
	Cell count	Percent Live Cells	Cell count	Percent Live Cells	
1400	1.71 ± 0.05 × 10 ⁶	65%	1.51 ± 0.02 × 10 ⁶	61%	0.92 ± 0.03 × 10 ⁶
1300	1.63 ± 0.03 × 10 ⁶	69%	1.44 ± 0.03 × 10 ⁶	67%	0.96 ± 0.03 × 10 ⁶
1100*	1.57 ± 0.04 × 10 ⁶	79%	1.37 ± 0.05 × 10 ⁶	80%	1.09 ± 0.05 × 10 ⁶
900	1.52 ± 0.02 × 10 ⁶	63%	0.98 ± 0.04 × 10 ⁶	63%	0.62 ± 0.04 × 10 ⁶
800	1.23 ± 0.03 × 10 ⁶	77%	0.74 ± 0.03 × 10 ⁶	79%	0.58 ± 0.04 × 10 ⁶
600	1.01 ± 0.03 × 10 ⁶	76%	0.80 ± 0.02 × 10 ⁶	74%	0.59 ± 0.03 × 10 ⁶

Cell count before washing started was 2×10^6 in each tube. RPM represents revolutions per minute. Significance is defined as $*P < 0.05$, when compared between rpm 1100 and 1400, 1300, 900, 800 and 600.

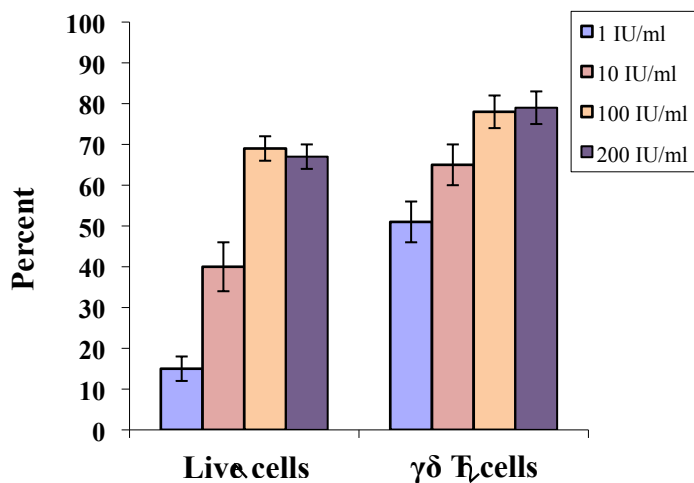


Figure 1: Optimization of cytokine IL-2 for the optimal proliferation of $\gamma\delta$ T cells at constant concentration of zoledronate ($1 \mu\text{M}$). Varying concentrations of IL-2 (1, 10, 100 and 200 IU/ml) were used in culture plates. Experiments were done in triplicates. For live cells, significances are defined as $P < 0.001$ and $P < 0.01$, when compared between the concentrations of IL-2, 100 IU/ml and 1 IU/ml, and between concentrations 10 IU/ml and 1 IU/ml respectively. For $\gamma\delta$ T cells, significance is defined as $P < 0.01$, when compared between the concentrations of IL-2, 100 IU/ml and 1 IU/ml, and between 10 IU/ml and 1 IU/ml.

Similarly, different IL-15 concentrations (1 – 100 ng/ml) were used in $\gamma\delta$ T cell cultures and plates. Different concentrations of IL-15 were added at day 3, 5, 8 and 11. Significantly high percent of live cells ($P < 0.001$) and $\gamma\delta$ T cells ($P < 0.001$) were observed at 10 ng/ml and 100 ng/ml (Figure 2) compared to 1 ng/ml IL-2 concentration. However, at 1 ng/ml of IL-15, both live cells and $\gamma\delta$ T cells were found to be remarkably low after 14 days culture.

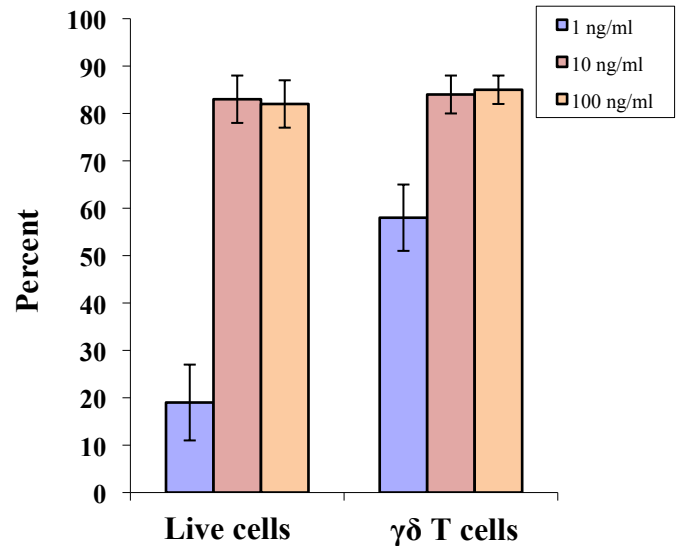


Figure 2: Optimization of cytokine IL-15 for the optimal proliferation of $\gamma\delta$ T cells at constant concentration of zoledronate ($1 \mu\text{M}$). Varying concentrations of IL-15 (1, 10 and 100 ng/ml) were used in culture plates under similar experimental conditions. Experiments were done in triplicates. For live cells, significance is defined as $P < 0.001$, when compared between the concentrations of IL-15, 100 ng/ml and 1 ng/ml and, between 10 ng/ml and 1 ng/ml. For $\gamma\delta$ T cells, significance is defined as $P < 0.01$, when compared between the concentrations of IL-15, 100 ng/ml and 1 ng/ml and between 10 ng/ml and 1 ng/ml.

Optimization of cytokines IL-2 and IL-15:

Both IL-2 and IL-15 were standardized to determine optimal concentrations to be used for $\gamma\delta$ T proliferation. Different concentrations of IL-2 (1 – 200 IU/ml) were added to $\gamma\delta$ T cell culture plates at day 3, 5, 8 and 11, respectively. Significant differences were observed in live cells, when expanded with different concentrations of IL-2. A significantly high percent of live cells was achieved with both IL-2 100 and 200 IU/ml when

compared with 1 IU/ml ($p < 0.001$) and 10 IU/ml ($p < 0.01$). Furthermore, high percent of $\gamma\delta$ T cells ($P < 0.01$) were observed at 100 IU/ml of IL-2 as compared to 1 and 10 IU/ml (Figure 1). Moreover, similar results were observed with 200 IU/ml of IL-2. Therefore, our protocols for $\gamma\delta$ T cell expansion include a combination of both IL-2 and IL-15 at the concentrations of 100 IU/ml and 10 ng/ml, respectively. These concentrations were used in the optimization of zoledronate, which is a well-known stimulant of $\gamma\delta$ T cells.

Standardization of zoledronate:

Different concentrations of zoledronate (0.1, 1, 10 μM), used as stimulant for $\gamma\delta$ T cells, were analyzed for cell expansion in presence of both cytokines, IL-2 and IL-15. The concentration of 1 μM zoledronate led to increased percent of live expanded cells with significantly high percent of $\gamma\delta$ T cells when compared to the 0.1 μM ($p < 0.001$). Furthermore, there was a significant high ($p < 0.01$) percent of $\gamma\delta$ T cells were observed at 10 μM concentrations of zoledronate in 14 day cultures (Figure 3).

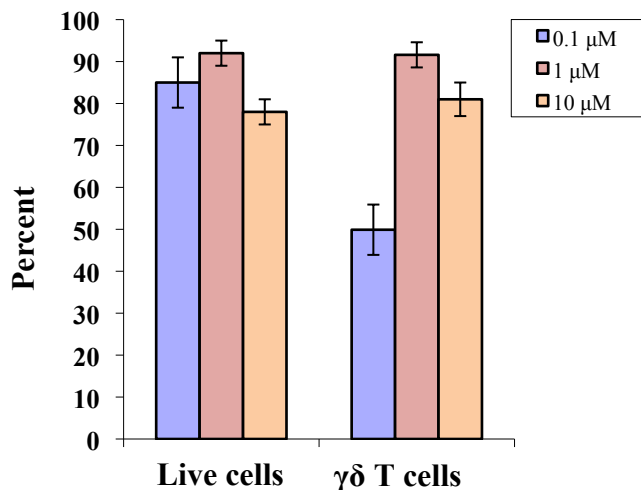


Figure 3: Standardization of zoledronate for the expansion of $\gamma\delta$ T cells at constant concentration of cytokines (IL-2 (100 IU/ml) and IL-15 (20 ng/ml)). Different concentrations of zoledronate (0.1, 1 and 10 μM) were used in culture plates under similar experimental conditions. Experiments were done in triplicates. For $\gamma\delta$ T cells, significance is defined as $P < 0.001$ and $P < 0.01$, when compared between the concentrations of zoledronate 1 μM and 0.1 μM , and between 10 μM and 0.1 μM , respectively.

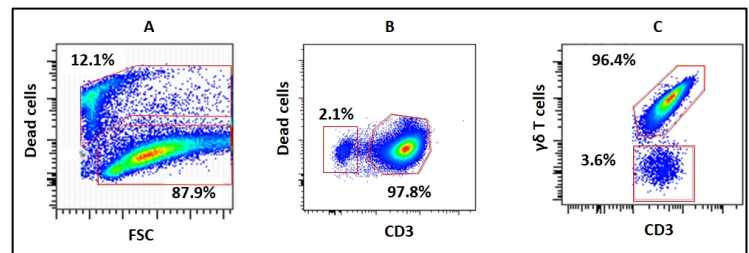


Figure 4: Flow cytometric analysis of 14 day expanded $\gamma\delta$ T cells. Figure A, B and showed percent live cells, CD3 cells and $\gamma\delta$ T cells, respectively. These data are from one donor.

Expansion folds for 14-day cultures:

In vitro proliferation of 1 μM zoledronate stimulated $\gamma\delta$ T cells for 14 days was carried out using different cytokine(s); first condition IL-2 (100 IU/ml) alone; second condition IL-15 (10 ng/ml) alone; and third condition with both IL-2 (100 IU/ml) and IL-15 (10 ng/ml) together (Table 2). -PBMCs were isolated from fresh blood from five healthy donors and expansion folds were calculated for all three-culture conditions. An expansion fold of 2524 ± 787 was estimated for $\gamma\delta$ T cells with both cytokines (IL-2 and IL-15), which was remarkably higher ($p < 0.0001$) than the expansion folds calculated for the two other $\gamma\delta$ T cell culture conditions i.e., using cytokine IL-2 alone (expansion fold 318 ± 121) or IL-15 (expansion fold 400 ± 134) alone (Table 2). Dot plots (Figure 4) show representation of percent live cells, CD3 and $\gamma\delta$ T cells after 14 days of expansion in presence of IL-2 and IL-15. Remarkable number of live cells (87.9%) can be observed in Figure 4A, together with high percent of CD3 (97.8%) (Figure 4B) and $\gamma\delta$ T cells (96.4%) (Figure 4C).

Table 2: *In vitro* expansion of $\gamma\delta$ T cells from freshly isolated PBMCs in response to zoledronate (1 μM).

	PBMC + IL-2	PBMC + IL-15	PBMC + IL-2 & IL-15
No. of donors (n)	5	5	5
	Day 0		
PBMCs ($10^6/\text{ml}$)	1	1	1
Start with $\gamma\delta$ -T cells ($10^6/\text{ml}$)	0.017 ± 0.007	0.017 ± 0.007	0.017 ± 0.007
	Post Expansion (after 14 days)		
Total Live Cells (%)	69.2 ± 5.3	77.2 ± 7.1	87.5 ± 5.5
CD3 ⁺ cells (%)	82.6 ± 7.5	79.6 ± 5.4	95.9 ± 2.7
$\gamma\delta$ -T cells (%)	79.4 ± 6.9	84.1 ± 8.2	91.6 ± 5.1
Total cells (10^6)	11.8 ± 0.9	13.3 ± 0.8	55.8 ± 3.9
*Total $\gamma\delta$ -T cells (10^6)	5.4 ± 1.3	6.8 ± 2.2	38.8 ± 7.1
#Expansion fold	318 ± 121	400 ± 134	$2524 \pm 787^{**}$

Cytokine concentrations IL-2 (100 IU/ml) and IL-15 (10 ng/ml). Each donor PBMCs were cultured in triplicates. Each value is the mean \pm SD from 5 different donors *Total $\gamma\delta$ -T cells (day 14) were calculated as: total cells \times total live cells (%) \times CD3⁺ cells (%) \times $\gamma\delta$ -T cells (%). #Expansion folds were calculated as: total $\gamma\delta$ T cells (day 14) / $\gamma\delta$ -T (day 0) **Significance is defined as $P < 0.0001$ when compared between the expansion fold with the combination of IL2 & IL-15 and IL-2 alone, and between combination of IL-2 & IL-15 and IL-15 alone.

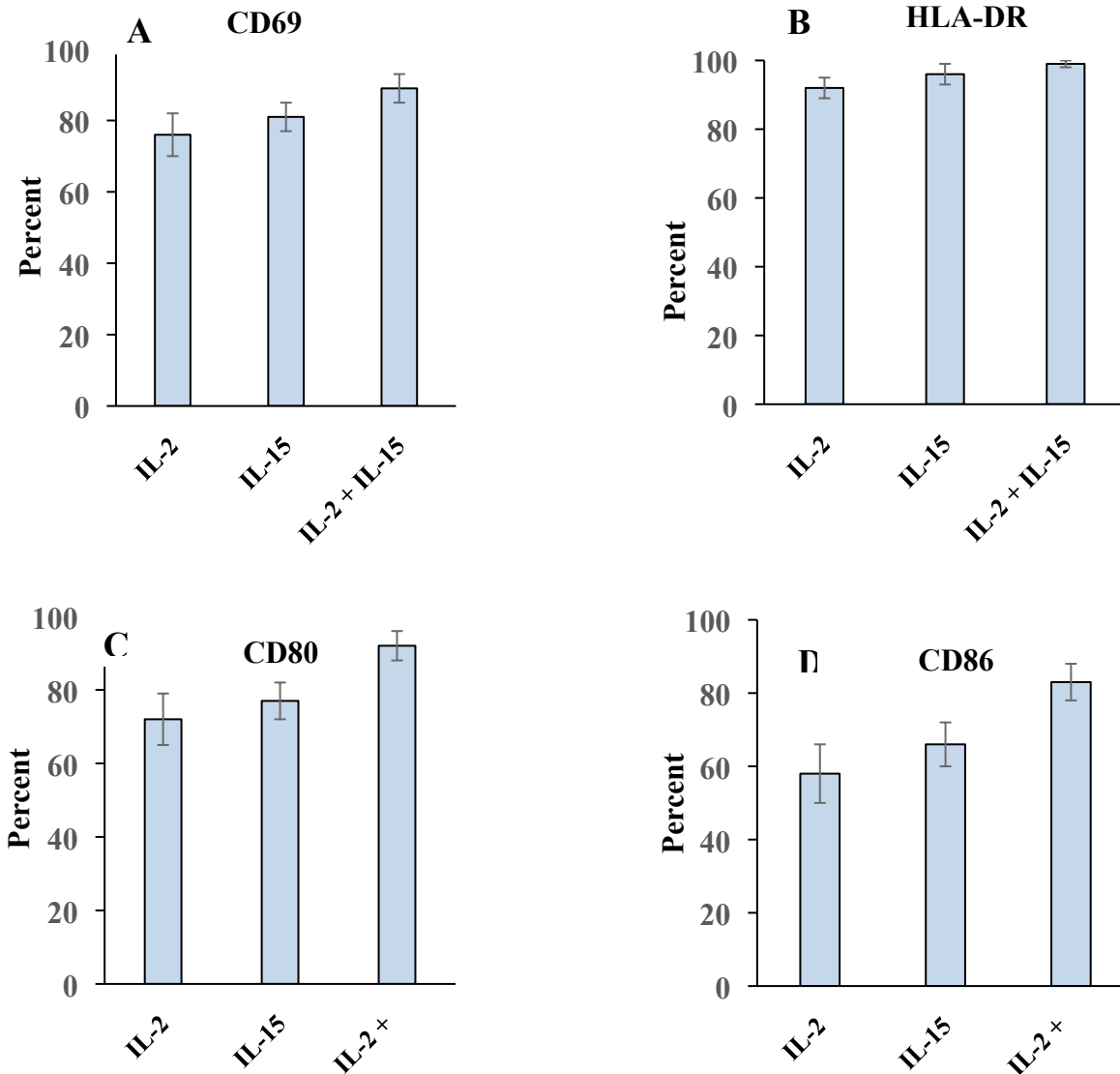


Figure 5. Expression of cell surface activation markers CD 69 (A), HLA-DR (B) and costimulatory markers CD80 (C) and CD86 (D) on 14 day expanded $\gamma\delta$ T cells in presence of IL-2 or IL-15 alone or in combination of both IL-2 and IL-15. These data were from 5 donors. Experiments were done in triplicates. For CD69, significance is defined as $P < 0.05$ when compared with the combination of IL2 and IL-15 and IL-2 alone or IL-15 alone. For CD80, significance is defined as $P < 0.05$ when compared with the combination of IL2 and IL-15 and IL-2 alone or IL-15 alone. For CD86, significance is defined as $P < 0.01$ when compared with the combination of IL2 and IL-15 and IL-2 alone or IL-15 alone.

These expanded $\gamma\delta$ T cells were also analyzed for activation and costimulatory cell surface molecules (Figure 5). Significantly higher percent of activation molecule CD69 (89%; $p < 0.05$; Fig. 5A) and costimulatory molecules CD80 (92%; $p < 0.05$; Fig. 5C) and CD86 (83%; $p < 0.01$; Fig. 5D) were expressed on expanded cells, in presence of both cytokines (IL-2 and IL-15) as compared with IL-2 alone or IL-15 alone. However, no significant differences were observed for HLA-DR under the three different conditions (Figure 5B).

Scheme of $\gamma\delta$ T cells expansion method:

From these findings, we propose an efficient and reproducible methodology (Figure 6), through which enormous numbers of expanded human $\gamma\delta$ T cells can be grown *in vitro* from a small initial amount of venous blood. This protocol is suitable for most PBMCs obtained from different donors. However, there is a possibility of huge differences in expansion folds, which may vary from donor to donor. In such cases researchers must exercise caution at the beginning of the protocol and should observe and analyze changes accordingly at day 3 – 5.

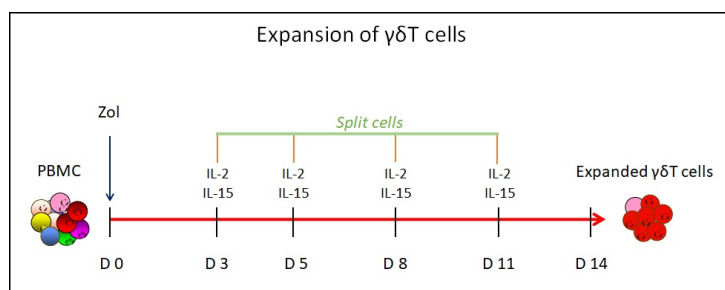


Figure 6: *In vitro* expansion of human $\gamma\delta$ -T cells for 14 days. The concentrations of Zoledronate (Zol) 1 μ M and the concentrations of cytokines IL-2 (100 IU/ml) and IL-15 (10 ng/ml) is given. Cells were split. Addition of cytokines and fresh medium was done. Cells were split on day 3, 5, 8 and 11 of the culture.

Discussion:

$\gamma\delta$ T cells are unique unconventional T cells, which are distinguishable from $\alpha\beta$ T cells. $\gamma\delta$ T cells fulfil numerous important functions in immunity, including cytokine production in response to microbial challenges, mobilization of other types of immune cells and tumor cell killing (at least *in vitro*) [10,12,13]. Human blood derived $\gamma\delta$ T cells are identified by their unique selectivity for phosphoantigens, such as isopentenyl pyrophosphate (IPP) generated in "stressed" cells and the 10,000-fold more active (E)-4-hydroxy-3-methyl-but-2-enyl pyrophosphate produced by many microbes [13], as well as bisphosphonates such as zoledronic acid

[10]. Numerous clinical studies were conducted using $\gamma\delta$ T cells as effector cells in cancer patient therapeutics as given in Table 3, including leukemia [14], colorectal carcinoma [15] and renal cell carcinoma, melanoma and acute myeloid leukemia [16]. In this study we have established an *in vitro* expansion strategy for $\gamma\delta$ T cells, which is an important tool for cancer immune therapeutics. First, PBMCs were isolated from peripheral blood and $\gamma\delta$ T cells were expanded *in vitro* using zoledronate as a stimulant. Standardization of the procedure for washing of PBMCs, suggested that after the first centrifuge of blood with lymphoprep™, which was at 1680 rpm, all the subsequent washing steps should be done at 1100 rpm for 10 min for better recovery of PBMCs from fresh blood. Extent of *in vitro* expansion of $\gamma\delta$ T cells depends on cytokines. IL-2 is a well-known cytokine, which is secreted by activated cells, and supports further growth of T cells [17]. It is also key for effector T cells development. IL-2 is important especially for antigen guided clonal expansion of T cells [17]. IL-15 is another cytokine, which is crucial in this study. Under conditions of infection, naive antigen-specific CD8⁺ T cells proliferate and further differentiate into CD8⁺ T lymphocytes [18], which may cause activation-induced cell death, hence limiting the viability and even expansion of cultured T cells [19]. Under such circumstances, IL-15 helps establishing a state of homeostasis of a group of lymphocytes and stimulates T-cell proliferation and survival [20]. Hence, both IL-2 and IL-15 were found to be necessary for the expansion of $\gamma\delta$ T cells for 14 days, and significant number of live cells with high percentage of $\gamma\delta$ T cells were recovered at 100 IU/ml IL-2 and 10 ng/ml of IL-15. Administration of the bisphosphonates drugs which contain nitrogen (such as zoledronate), in patients of osteoporosis and hypercalcemia in malignancies, lead to enhanced intracellular IPP levels via inhibition of one of the mevalonate pathway enzymes i.e., farnesyl diphosphate synthase. Increase in IPP concentration can lead to activation and expansion of human $\gamma\delta$ T cells [21, 22]. A stimulant of $\gamma\delta$ T cells, known as zoledronate, was also standardized for different concentrations used for the expansion of these cells. One μ M concentration of zoledronate exhibited potent stimulation of these cells, well enough to achieve significant percent of $\gamma\delta$ T cells population of notable high purity. Relatively high expansion folds were achieved in 14-day cultures, when $\gamma\delta$ T cells were stimulated by 1 μ M zoledronate with the addition of cytokines IL-2 and IL-15. However, low expansion folds were calculated for expanded $\gamma\delta$ T cell with cytokine IL-2 and IL-15 alone. It is evident that combination of both IL-2 and IL-15 considerably increased the activation (CD69) and costimulatory (CD80 and CD86) molecules on expanded $\gamma\delta$ T cells cell surface. MHC-class II molecules were expressed on most of the expanded $\gamma\delta$ T cells irrespective of cytokine(s) conditions, is a well-known APC marker also T cell activation marker [23, 24]. These results were

supported by previous finding [22], where $\gamma\delta$ T cell cultures were added with IL-15, resulted in observations of a higher proliferative capacity. The expansion folds calculated in this study showed better results than the expansion fold calculated in our previous study [10]. The difference may be due to the use of frozen PBMCs in our previous study. Hence, it is recommended to use fresh blood instead of frozen PBMCs for optimum expansion. We have proposed a scheme based on the findings in this study, which showed an efficient and reproducible method, which may be used to achieve high yield of expanded human $\gamma\delta$ T cells using a small amount of blood. These expanded cells can be potentially infused back into the cancer patients or may be frozen down in liquid nitrogen for future use. It was also observed that freshly expanded $\gamma\delta$ T cells or even frozen $\gamma\delta$ T cells have *in vitro* tumor cell killing functionality and can also secrete pro-inflammatory cytokines interferon- γ and tumor necrosis factor- α (data not shown) [10, 25]. This research can be extended with the concomitant addition of small biologically active molecules with expanded $\gamma\delta$ T cells, which can be tested *in vitro* as combinational therapeutics. Immune-check point inhibitors used in tumor cytotoxicity assay may also show positive effects in combinational personalized cancer immunotherapies for various tumors.

Conclusion:

It is well established that human $\gamma\delta$ T cells have anti-cancer activity and can be safely infused into patients with different cancers. For potential cancer immunotherapy, $\gamma\delta$ T cells are needed in large numbers, as several doses of these cells are often required for treatment. Also, it is not feasible to draw large amounts of blood from terminally ill cancer patients, which is the usual procedure for dendritic cell-based immunotherapies. Thus, a standardized method for the expansion of $\gamma\delta$ T cells is needed with detailed methodology for their better yield. We have established in this study a detailed method for the expansion of $\gamma\delta$ T cells, in which significantly high yields of pure $\gamma\delta$ T cells were recovered with high percentage of live cells after 14 days of culture. Furthermore, these expanded $\gamma\delta$ T cells have the potential to be used as personalized cancer therapeutics.

Conflicts of Interest:

All authors included in this manuscript declare that they have no conflict of interest.

Ethical Approval:

This study has been reviewed and approved by the Research Ethics Committee at the University of Ha'il dated 27/11/2020 and approved by University President letter number (Nr. 20455/5/42).

Funding:

This research has been funded by Scientific Research Deanship at the University of Ha'il - Saudi Arabia through project number RG-191332.

References

- [1] Bray F *et al.* *CA Cancer J Clin* 2018 **68**:394. [PMID: 30207593].
- [2] <https://www.cancer.org/research/cancer-facts-statistics/all-cancer-facts-figures/cancer-facts-figures-2020.html>
- [3] Marcus A, *et al.* (2014). *Adv Immunol* 2014 **122**:91 [PMID: 24507156].
- [4] Zou C *et al.* *Oncotarget* 2017 **8**:8900 [PMID: 27823972].
- [5] Pistoia V *et al.* *Front Immunol* 2018 **9**:984 [PMID: 29867961].
- [6] Lafont V *et al.* *Front Immunol* 2014;**5**:170 [PMID: 25538706].
- [7] Todro M *et al.* *Oncoimmunol* 2014 **2**:e25821 [PMID: 24244907].
- [8] Liu Z *et al.* *J Urol* 2015 **173**:1552. [PMID: 15821484].
- [9] Caccamo N *et al.* *Eur J Immunol* 2006 **36**:2681 [PMID: 16981183].
- [10] Khan MWA *et al.* *Front Immunol* 2014 **5**:344 [PMID: 25101086].
- [11] Wada I *et al.* *Cancer Med* 2014 **3**:362 [PMID: 24515916].
- [12] Khan MWA *et al.* *Front Immunol* 2014 **5**:512 [PMID: 25374569].
- [13] Davey MS *et al.* *PLOS Pathog* 2011 **7**:e1002040 [PMID: 21589907].
- [14] Bertaina A *et al.* *Oncoimmunol* 2017 **6**:e1216291 [PMID: 28344861].
- [15] Izumi T *et al.* *Cytotherapy* 2013 **15**:481 [PMID: 23391461].
- [16] Kunzmann V *et al.* *J Immunother* 2012 **35**:205 [PMID: 22306909].
- [17] Ross SH & Cantrell DA. *Annu Rev Immunol* 2018 **36**:411 [PMID: 29677473].
- [18] Bachmann MF & Oxenius A. *EMBO Reports* 2007 **8**:1142 [PMID: 18059313].
- [19] Liao W *et al.* *Immunity* 2013 **38**:13 [PMID: 23352221].
- [20] Lugli E *et al.* *Blood* 2010 **116**:3238 [PMID: 20631381].
- [21] Nishio N *et al.* *J Immunother* 2012 **35**:598 [PMID: 22996365].
- [22] Idrees AS *et al.* *Cancer Sci* 2013 **104**:536 [PMID: 23387443].
- [23] Starska K *et al.* Part I. *Folia Histochem Cytobiol* 2011 **49**:579 [PMID: 22252752].
- [24] Tincati C *et al.* *Clin Dev Immunol* 2012 **2012**:935425 [PMID: 22400042].
- [25] Van Acker HH *et al.* *J Hematol Oncol* 2016 **9**:101 [PMID: 27686372].



Edited by P Kanguane

Citation: Ali Khan *et al.* Bioinformation 17(3): 460-470 (2021)

License statement: This is an Open Access article which permits unrestricted use, distribution, and reproduction in any medium, provided the original work is properly credited. This is distributed under the terms of the Creative Commons Attribution License

Articles published in BIOINFORMATION are open for relevant post publication comments and criticisms, which will be published immediately linking to the original article for FREE of cost without open access charges. Comments should be concise, coherent and critical in less than 1000 words.

BIOINFORMATION

Discovery at the interface of physical and biological sciences



since 2005

BIOINFORMATION

Discovery at the interface of physical and biological sciences

indexed in

