

Review Article

Mesenchymal Stem Cells: An Excellent Candidate for the Treatment of Diabetes Mellitus

Qiulan Huang , Yanting Huang , and Jianping Liu 

Department of Endocrinology, The Second Affiliated Hospital of Nanchang University, Nanchang, Jiangxi, China

Correspondence should be addressed to Jianping Liu; liujpnfm@163.com

Received 10 March 2021; Accepted 19 May 2021; Published 28 May 2021

Academic Editor: Andrea Tura

Copyright © 2021 Qiulan Huang et al. This is an open access article distributed under the Creative Commons Attribution License, which permits unrestricted use, distribution, and reproduction in any medium, provided the original work is properly cited.

Mesenchymal stem cells (MSCs) are adult stem cells (ASCs) known for repairing damaged cells, exerting anti-inflammatory responses and producing immunoregulatory effects that can be significantly induced into insulin-producing cells (IPCs), providing an inexhaustible supply of functional β cells for cell replacement therapy and disease modeling for diabetes. MSC therapy may be the most promising strategy for diabetes mellitus because of these significant merits. In this paper, we focused on MSC therapy for diabetes.

1. Introduction

Diabetes mellitus (DM), a group of metabolic diseases characterized by dysregulated glucose metabolism as a result of insufficient production or effectiveness of the pancreatic hormone insulin, ultimately leads to a series of serious complications and has become a global epidemic with dramatically increasing incidences. Commonly DM falls into two broad pathogenetic categories: type 1 diabetes mellitus (T1DM) and type 2 diabetes mellitus (T2DM). T1DM is characterized by autoimmune destruction of pancreatic β -cells resulting in severe insulin deficiency [1], and T2DM results from a combination of insulin resistance and dysfunction of insulin-producing pancreatic β -cells [2]. Although conventional available treatments, including oral antidiabetes drugs and exogenous insulin injection, can improve hyperglycemia-related symptoms or temporarily improve insulin sensitivity in target tissues, these treatments reverse neither disease progression nor cellular dysfunction. As a result, exploring effective ways to permanently cure this disease is a priority.

It may be a promising approach to find seed cells to replace damaged or lost β -cells to achieve the goal of curing diabetes. According to previous reports, pancreatic or islet cells have been transplanted into patients to replace islet cells with loss of function and then successfully improve the

insulin requirement [3, 4]. However, its application is limited by the lack of donors, immune rejection, and severe postoperative complications [3, 5, 6]. Fortunately, MSCs, known for their lower immunogenicity and self-renewal ability, can be induced into insulin-producing cells (IPCs) and have attracted significant attention for the treatment of DM. Importantly, MSCs are also well known for their immunomodulatory and anti-inflammatory capabilities, which have been widely used to treat immune diseases such as severe aplastic anemia [7, 8], multiple sclerosis [9, 10], and nonalcoholic steatohepatitis [11–13]. Moreover, MSCs can secrete some cytokines, which is beneficial for improving the microenvironment of the pancreas, thereby protecting islet function and even reversing damaged cell function.

2. IPCs Transplantation

Stem cells can spontaneously differentiate into IPCs in vivo or in vitro, which is one of the key mechanisms by which MSCs treat DM. However, spontaneous differentiation efficiency is extremely low [14]. Numerous studies have chemically [15–17] or genetically [18–20] induced MSCs into IPCs by effectively applying small molecules or genetic engineering to improve differentiation efficiency. Genetic engineering schemes are highly efficient, expensive, cumbersome, and time-consuming, and most of them use viruses

as vectors, which are teratogenic and form tumors. Chemical induction is an indirect differentiation application using small-molecule compounds such as activin A, nicotinamide, trichostatin A, and β -mercaptoethanol, which are non-immunogenic and easier to synthesize, standardize, and preserve [21]. The published literature on the differentiation of MSCs into IPCs which has been proved to respond well to glucose stimulation in vitro and in vivo is shown in Table 1. These induction protocols usually mimic the pancreatic developmental microenvironment with small-molecule compounds and gradually induce MSCs to differentiate into IPCs in stages. Researchers have variously optimized the schemes to improve induction efficiency. For example, Karimi et al. [22] demonstrated that vildagliptin (VG) combined with activin A, nicotinamide, fibroblast growth factor, epidermal growth factor, N2, B27, etc. elevates the differentiation of adipose-derived MSCs (AD-MSCs) into IPCs. Insulin release from VG-treated AD-MSCs showed a nearly 3.6-fold increase when exposed to high-glucose medium, and the percentage of insulin-positive cells in the VG-treated cells was approximately 2.9-fold higher than that in the untreated AD-MSCs. Mahmoud et al. [23] used activin A, nicotinamide, and other compounds to directly induce BMSCs into IPCs, which can express transcription factors and pancreatic hormone genes similar to those expressed by pancreatic islets, and further transplantation into nude diabetic mice could maintain euglycemia in diabetic mice for 3 months. Later, their team transferred the IPCs packaged in a capsule device into diabetic dogs, which also achieved remarkable results [24]. Many successful cases have effectively controlled blood glucose in animal models of diabetes by IPC transplantation [15, 25], which offers a promising treatment choice for DM. In addition, some researchers [23, 26] have proven that transplantation of IPCs is more effective than MSCs in controlling blood sugar.

Unfortunately, there are many issues that need to be addressed. First, the cell survival time is shortened due to chemical toxicity after MSCs are induced into IPCs. Moreover, some researchers have considered that there is no evidence for significant transdifferentiation of bone marrow into pancreatic cells in vivo [14]. In addition, in Hassanin et al.'s [27] opinion, despite the weak immunogenicity of IPCs derived from MSCs in vitro, they could still induce an immune response or different degrees of inflammatory response.

3. Clinical MSCs Transplantation

3.1. Clinical Study of MSCs Therapy for T1DM. T1DM is a multifactorial disorder characterized by T cell-mediated autoimmune destruction of β -cells [34]. In particular, T1DM is a silent killer of β -cells that only occurs when the β -cell mass is reduced to less than 20%, resulting in the inability to secrete insulin [35]. As a result, daily insulin injections are needed for T1DM as a life-saving measure. Insulin is required for regulating the rate at which cells are able to uptake and metabolize glucose and is thus critical for determining how cells store and utilize fuels [36]. Unfortunately, it quickly became clear that the delivery of

exogenous insulin via subcutaneous injections was non-physiological and crude. Moreover, exogenous insulin cannot respond to changeable blood glucose levels in vivo, although insulin saves the lives of T1DM patients. In terms of physiology, pancreatic β -cells can release insulin physiologically in response to changes in blood sugar in glucose-stimulated insulin secretion (GSIS) and cannot be replaced by exogenous insulin injections to balance the glucose level, which is exquisitely adjusted by the islet cells. The imbalance demonstrated itself in the development of hyperglycemia-driven micro- and macrovascular complications over time. Moreover, hypoglycemia, a dangerous acute complication, is still a frequent occurrence due to delayed insulin action [37, 38].

To improve this dilemma, many scientists are working on MSC therapy for diabetes. Some clinical projects have been approved. As of March 2021, there are 27 clinical studies on MSCs in the treatment of T1DM in the clinical trials registry (<http://www.clinicaltrials.gov>), most of which were umbilical cord MSCs (UC-MSCs), namely, Wharton's jelly MSCs (WJ-MSCs) and bone marrow-MSCs (BM-MSCs) for the treatment of diabetes, and another was menstrual blood-derived MSCs and one detached tooth-derived MSCs for T1DM. This review does not discuss the treatment of DM complications as its main subject. The published literature except for the treatment of DM complications for evaluating transplanted MSCs for T1DM is shown in Table 2. Carlsson's study [39] was an open single-center randomized pilot study to first evaluate the safety and efficacy of autologous BM-MSCs in the treatment of recently diagnosed T1DM. All patients who received autologous BM-MSCs treatment during the follow-up period tolerated treatment well, with no adverse events. In addition, most patients randomized to the MSC treatment group increased their capacity for C-peptide response to the mixed-meal tolerance test (MMTT) during the study period, with increased delta values for both peak C-peptide response and MMTT C-peptide response to the MMTT when compared with the control group [39]. However, in this study, there were no significant improvements in C-peptide peak values and C-peptide, HbA1c, and insulin requirements before treatment with MSCs and only a significant improvement compared with the control group. Hu et al. [40] and Cai et al. [41] reported that UC-MSCs significantly improved the patient's metabolic index after treatment, which is encouraging and promising. None of these studies showed significant side effects, demonstrating the safety of MSC therapy.

However, these studies have a small sample size and lack a multicenter study, which cannot be applied as a specification in clinical practice. Although these studies fully demonstrate the short-term safety, effectiveness, and inspiration of MSC therapy for T1DM, they have small sample sizes and lack multicenter research to be used on a large scale. The safety and efficacy of MSCs in the treatment of T1DM have been validated in animals and are currently in the small-sample clinical trial phase. Many studies have been initiated and are in the process of research.

TABLE 1: Protocols that induce MSCs into IPCs.

Cell source	Induce MSCs into IPCs	Transplantation way and results
<i>Rat BM-MSCs</i> [26]	Stage 1, 6 days: 10 ng/ml bFGF, 10 ng/ml EGF, 2% B27 Stage 2, 6 days: 10 ng/ml HGF, 10 ng/ml b-cellulin, 10 ng/ml AA, 10 mmol/L NA, 2% B27	Transplantation way: injected into intraperitoneal Results: IPC transplantation improved insulin level better than MSC transplantation
<i>Human BM-MSCs</i> [24];	Stage 1, 3 days: 55 nmol/L TSA, serum-free DMEM	Transplantation way: cells were loaded in 2 TheraCyte capsules and transplanted under the rectus sheath
<i>Mice BM-MSCs</i> [28]	Stage 2, 7 days: 10 nmol/L GLP-1, 10% FBS, DMEM: DMEM/F12	Results: the transplanted cells were glucose-responsive and insulin-secreting. Four weeks after transplantation, blood sugar values became normal
<i>Rat AD-MSCs</i> [29]	Stage 1, 2 days: 10 mmol/l NA, 0.5 mmol/l β -mercaptoethanol and serum-free high-glucose DMEM (25 mmol/l) Stage 2, 26 days: 30 ng/ml FGF, 10 mmol/l NA and serum-free high-glucose DMEM (25 mmol/l)	Transplantation way: transplanted into the distal tip of the spleen Results: IPC transplantation significantly reduced the glucose level. And IPCs were indeed responsive to a glucose challenge in vivo
<i>Human UC-MSCs</i> [30]	Stage 1, 7 days: CMRL1066 medium containing 10% FBS, 1% PSA, 100 ng/ml of β -nerve growth factor, 4 nM AA, 10 mM NA, and 25 ng/ml EGF Stage 2, 7–10 days: the culture medium was changed to DMEM/F12, and the other components were the same as those in stage 1 Stage 3, 17 days: 10 mM NA, ITS, and 10 ng/ml bFGF	Transplantation way: injected through a retroorbital vein Results: IPC transplantation decreased blood glucose, improved glucose tolerance, increased body weight, and prolonged the survival time of NOD mice. And IPCs containing human C-peptide and human nuclei were located in the liver
<i>Human BM-MSCs</i> [23]	Stage 1, 2 days: serum-free, glucose-rich DMEM (25 mmol/L) containing 0.5 mmol/L β -mercaptoethanol Stage 2, 8 days: serum-free, glucose-rich medium containing 1% nonessential amino acids, 20 ng/ml bFGF, 20 ng/ml EGF, 2% B27 supplement, and 2 mmol/L L-glutamine Stage 3, 8 days: serum free, glucose-rich DMEM containing 10 ng/ml betacellulin, 10 ng/ml AA, 2% B27 supplement, and 10 mmol/L NA	Transplantation way: inserted under the renal capsule Results: IPC treatment resulted in control of nude diabetic mice diabetic status for 3 months
<i>Human BM-MSCs</i> [31]	Stage 1, 3 days: DMEM, 55 nmol/L TSA Stage 2, 7 days: high-glucose (25 mmol/L) medium containing a 1 : 1 ratio of DMEM : DMEM/F12, 10% FBS, and 10 nmol/L GLP-1	Transplantation way: implanted beneath the renal capsule Results: diabetic mice became euglycemic 8 ± 3 days after transplantation. The results of the oral glucose tolerance test were normal
<i>Rat BM-MSCs</i> [32]	Stage 1, 2 days: DMEM low-glucose medium containing 10 mmol/L NA, 0.5 mmol/L 2-mercaptoethanol, and 5% FBS Stage 2, 24 hours: serum-free DMEM high-glucose medium containing 0.5 mol/L 2-mercaptoethanol, 10 mmol/L NA, 5% FBS, and 10 ng/ml AA Stage 3, 8 days: DMEM-HG medium containing 20 ng/ml bFGF, 20 ng/ml EGF, 2 mmol/L L-glutamine, 5% FBS, and 10 mmol/L NA	Transplantation way: injected via tail veins Results: IPC therapy significantly improved the body weight and serum insulin, alpha-amylase, adiponectin, creatinine, total cholesterol, triacylglycerol, IL-6, TNF- α , liver L-malonaldehyde, and glycogen levels in the STZ-induced diabetes model
<i>Human UC-MSCs</i> [33]	Stage 1, 2 days: DMEM/F12 (1 : 1) with 17.5 mM glucose, 1% fatty acid-free BSA Cohn fraction V, 4 nM AA, 1% PSA, 1 \times ITS-X (ITS-X; 5 mg/L insulin, 5 mg/L transferrin, and 5 mg/L selenium), and 50 μ M 2-mercaptoethanol Stage 2, 2 days: DMEM/F12 (1 : 1) with 17.5 mM glucose, 1% BSA, 1% PSA, ITS-X, and 0.3 mM taurine Stage 3, 6 days: DMEM/F12 (1 : 1) with 17.5 mM glucose, 1.5% BSA, ITS-X, 1% PSA, 3 mM taurine, 100 nM GLP-1, 1 mM NA, and 1 \times nonessential amino acids	Transplantation way: injected via the portal vein Results: IPC treatment increased serum insulin and C-peptide level and improved glucose tolerance

VG : vildagliptin, bFGF: basic fibroblast growth factor, HGF: hepatocyte growth factor, EGF: epidermal growth factor, AA: activin A, NA: nicotinamide, TSA: trichostatin A, DMEM: Dulbecco's Modified Eagle's Medium, GLP-1: glucagon-like peptide 1, FBS: fetal bovine serum, ITS: insulin transferrin selenium, and PSA: penicillin/streptomycin/amphoteric B.

3.2. *Clinical Study of MSC Therapy for T2DM.* T2DM is caused by immune dysfunction and inflammation, which are likely key factors in the development of insulin resistance in

T2DM. MSC therapy has been reported to be expected to effectively cure diabetes and ameliorate insulin resistance, which has already been validated in animal trials [49–51]. In

TABLE 2: Clinical studies of MSC therapy for T1DM.

Publication	Cell resource	Injection method	Injection dose	Follow-up time	Efficacy evaluation index	Results	Adverse events	Study design
Carlsson et al. [39]	Autologous BM-MSC	Intravenous drip	2.75×10^6 cells/kg	12 months	MMTT, AUC, HbA1c, C-peptide, insulin requirements	In response to the MMTT, patients in the control arm had mean decreases in both C-peptide peak values and C-peptide, when calculated as AUC during the 1st year. In contrast, these responses were preserved in MSC-treated patients.	No side effects	Open, single-center, randomized pilot study
Hu et al. [40]	WJ-MSC	Intravenous delivery	$1.5-3.2 \times 10^7$ cells/kg	24 months	FBG, PBG, HbA1c, CPGR, C-peptide, GADA, insulin requirements	Both the HbA1c and C-peptide were significantly better than either pretherapy values or control group patients during the follow-up period.	No obviously adverse reactions	Randomized, double-blind study
Cai et al. [41]	UC-MSC and autologous BM-MNC	Infused through pancreatic artery	1.1×10^6 cells/kg	12 months	AUCC-pep, HbA1c, FBG, C-peptide, insulin requirements	The treatment was well tolerated. After 1 year, metabolic measures improved in treated patients.	Transient abdominal pain; bleeding at the puncture site; upper respiratory tract infections	Randomized, controlled, open-label study

MMTT: mixed-meal tolerance test, AUC: FBG: fasting blood glucose, PPGR: postprandial blood glucose, CPGR GADA: glutamic acid decarboxylase antibodies, HbA1c: glycosylated hemoglobin, and BM-MNC: bone marrow mononuclear cell.

addition, there are 21 clinical studies on MSC therapy in the ClinicalTrials registry (<http://www.clinicaltrials.gov>) as of March 2021, in which 7 studies were completed. The published literature for evaluating transplanted MSCs for T2DM is shown in Table 3. In these published studies, it has been confirmed that MSC therapy can effectively reduce FBG, PBG, and HbA1c, reduce insulin requirements, and improve insulin resistance in follow-up time, proving that MSC therapy has a significant effect in clinical trials. In these clinical evaluations, there are some side effects, including fever, subcutaneous hematoma, nausea, vomiting, headache, and minor hypoglycemia; fortunately, they can be relieved after symptomatic treatment without serious complications or side effects. However, these studies were too short for follow-up evaluations, as they were always only 12 months, to assess long-term side effects and complications. Despite many challenges, the current results, which are reassuring and encouraging, demonstrate that MSC therapy is a promising method for T2DM and suggest a new era of diabetes treatment.

4. Mechanisms of MSC Therapy for DM

4.1. Differentiation into IPCs. MSCs can be induced to differentiate into IPCs, which is the earliest discovered mechanism for treating diabetes; as a result, MSCs can be used to replace the damaged or hypofunctional β -cells to secrete insulin for hypoglycemic treatment, which is the most direct and fundamental treatment for diabetes. Moreover, it is also the basic mechanism by which all stem cells treat diabetes. Many induction protocols have been developed to stably induce MSCs to differentiate into IPCs in vitro, which can effectively control blood sugar within the normal range. After transplanting IPCs into mice, it was found that the content and release profile of human insulin in diabetic mice were similar to those of normal mice, while diabetic mice release very little endogenous insulin [23, 52]. This shows that the IPC cluster derived from human MSC differentiation replaced impaired islet cells to release insulin in mice, fully proving that IPCs derived from human MSCs can treat diabetes. However, there are still many problems to be resolved in the differentiation of MSCs into IPCs. For example, the induced cells may cause immune rejection, some compounds commonly used to induce differentiation can damage the cells, and the risk of tumorigenicity caused by virus-mediated differentiation [53–56]. Although MSCs has immunomodulatory effect to inhibit immune rejection, some studies have shown that MSCs lose immunoprivileged state and acquire immunogenicity after differentiating into IPCs [53], smooth muscle cells, and endothelial cells [54]. Previous study showed that the use of viral vectors to introduce exogenous genetic material into cells carries the risk of tumorigenesis [55]. As for chemically induced differentiation, some small molecular compounds commonly used to induce stem cells to differentiate into IPCs, such as TSA, can increase the apoptosis rate of cells [56]. Therefore, it is important to improve the existing induction methods and find new induction methods to obtain effective and safe IPCs.

4.2. Amelioration of Insulin Resistance. Insulin resistance (IR) is an abnormal physiological state in which the body's response to insulin secreted either endogenously or exogenously is decreased. IR is implicated in the pathogenesis of T2DM [57]. To achieve a good effect of lowering blood glucose, it is necessary to improve IR clinically. As research progressed, researchers found that the effect of MSCs on diabetes was not just mediated by the secretion of insulin; most MSCs could ameliorate IR by their anti-inflammatory potential. In 2012, it was first reported that MSC treatment could improve insulin sensitivity in T2DM [58]. MSC treatment resulted in the expression of GLUT4, phosphorylated insulin receptor substrate-1 (IRS-1), and increased protein kinase B (AKT) in insulin target tissues [58]. GLUT4, IRS-1, and AKT are essential for insulin signaling and glucose uptake [59–61]. Decreased expression of GLUT4 and dysregulation of IRS-1 and AKT phosphorylation indicate IR. Similarly, Sun et al. [62] discovered that in the presence of UC-MSCs, knockdown of NLRP3 or IL-1 β partially improved palmitic acid and lipopolysaccharide-induced insulin signaling impairments. Simultaneously, UC-MSC infusion significantly ameliorated hyperglycemia in T2DM rats and decreased inflammatory activity, which resulted in improved insulin sensitivity in insulin target tissues. Gao et al. [63] improved insulin resistance in T2DM rats by overexpressing apelin in MSCs. During this process, it was found that the secretion of the inflammatory factors IL-6 and TNF- α significantly decreased, whereas the secretion of the anti-inflammatory factor adiponectin significantly increased. The inflammatory cytokines IL-6 and TNF- α have been implicated in insulin resistance [61]. Moreover, Xie et al. and Gao et al. [64, 65] used UC-MSCs to differentiate macrophages into M2 cells with an anti-inflammatory phenotype to improve IR in T2DM mice or rats. In addition, Zhang et al. [66] proved that M2 cells ameliorate IR by remodeling inflammatory/macrophage homeostasis in obese mice. Further analysis showed that proinflammatory phenotype M1 cells stimulated UC-MSCs to increase the expression of IL-6, a molecule upregulating IL4R expression, promoted phosphorylation of STAT6 in macrophages, and eventually polarized macrophages into the M2 phenotype [64]. Changes in the levels of IL-6 in these two studies seem contradictory. However, this also explains the process of inflammation. When IR is present, MSCs increase the expression of IL-6 to promote the differentiation of M1 to M2 macrophages, thereby ameliorating IR and reducing the levels of inflammatory cytokines. Therefore, IL-6 expression levels increase in the early stage of treatment with MSCs (24 hours [64]), while IR is ameliorated and IL-6 levels decrease in the late stage of transplantation (after 42 days of transplantation [63]). These results prove that MSCs ameliorate insulin resistance by regulating the release of inflammatory factors, upregulating anti-inflammatory factors and/or downregulating inflammation.

4.3. Actions on β -Cells. Some studies have found that MSCs home to the pancreas after infusion and differentiate into islet β -cells [67]. However, very few cells can be located in

TABLE 3: Clinical studies of MSC therapy for T2DM.

Publication	Cell resource	Injection method	Injection dose	Number of injections	Follow-up time	Efficacy Evaluation Index	Results	Adverse events	Study design
Liu et al. [42]	WJ-MSC	Splenic artery injection; intravenous injection	1 × 10 ⁶ cells/kg	Twice	12 months	HbA1c, C-peptide, FBG, PBG, insulin requirements, inflammatory markers, T lymphocyte counts	WJ-MSC transplantation significantly decreased the levels of glucose and glycated hemoglobin, improved C-peptide levels and beta cell function and reduced markers of systemic inflammation and T lymphocyte counts.	Fever, subcutaneous hematoma, nausea, vomiting, and headache	Open, single-center, nonrandomized study
Bhansali et al. [43]	Autologous BM-MSC	Superior pancreatic injection; antecubital vein injection	1 × 10 ⁶ cells/kg	Twice	12 months	Insulin requirements, HbA1c, C-peptide	BM-MSC therapy resulted in a significant decrease in the insulin dose requirement along with an improvement in the stimulated C-peptide levels in T2DM.	No obviously adverse reactions	Randomized, single-blinded, placebo-controlled study
Bhansali et al. [44]	Autologous BM-MSC and autologous BM-MNC	Superior pancreatic injection; antecubital vein injection	MSCs: 1 × 10 ⁶ cells/kg MNCs: 1 × 10 ⁹ cells/kg	Twice	12 months	ISI, insulin, HbA1c, C-peptide, HOMA-IR, HOMA-β, HOMA-S, GLUT-4, IRS-1	Both autologous BM-MSCs and autologous BM-MNCs resulted in sustained reduction in insulin doses in T2DM and improved insulin sensitivity with MSCs and increased C-peptide response with MNCs.	Nausea and vomiting, local extravasation, minor hypoglycemia	Randomized, single-blinded, placebo-controlled study
Kong et al. [45]	UC-MSC	Vein injection	1 × 10 ⁶ cells/kg	Three times	6 months	FPG, PBG, HbA1c, C-peptide, subsets of T cells	FBG and PBG of the patients in the efficacy group were significantly reduced after UMSC transfusion.	Slight transient fever	Randomized, single-blinded, placebo-controlled study
Chen et al. [46]	UC-MSC	Superior pancreatic injection; antecubital vein injection	1 × 10 ⁶ cells/kg	Four times	6 months	FPG, PBG, HbA1c, C-peptide, HOMA-IR	The FPG, 2hPG, and HbA1c levels were significantly improved in the group with MSCs. Liraglutide treatment in combination with hUC-MSCs improves glucose metabolism and the β-cell function in T2DM.	Hypoglycemia event	Randomized, single-blinded, placebo-controlled study
Skyler et al. [47]	Allogeneic BM-MPS	Intravenous infusion	0.3/1/2 × 10 ⁶ cells/kg	Once	12 weeks	HbA1c, FPG	At week 12, the HbA1c target of <7% was achieved, respectively 13.3%, 6.7%, 33.3%; at week 12, the FPG showed no trends across treatment groups.	No serious adverse events	Multicenter, randomized, single-blind, placebo-controlled
Jiang et al. [48]	Placenta-MSCs	Intravenous infusions	1.35 × 10 ⁶ cells/kg	Three times	6 months	Insulin requirements, C-peptide, HbA1c	The daily mean dose of insulin requirements decreased, and the C-peptide level was increased after therapy.		Nonrandomized study

BM-MPCs: bone marrow-derived mesenchymal precursor cells, TNF-α: tumor necrosis factor-α, ISI: insulin sensitivity index, HOMA-IR: homeostatic model assessment of insulin resistance, HOMA-β: homeostatic model assessment of β-cell function, HOMA-S: homeostatic model assessment of insulin sensitivity, GLUT-4: glucose transporter type 4, and IRS-1: insulin receptor substrate-1.

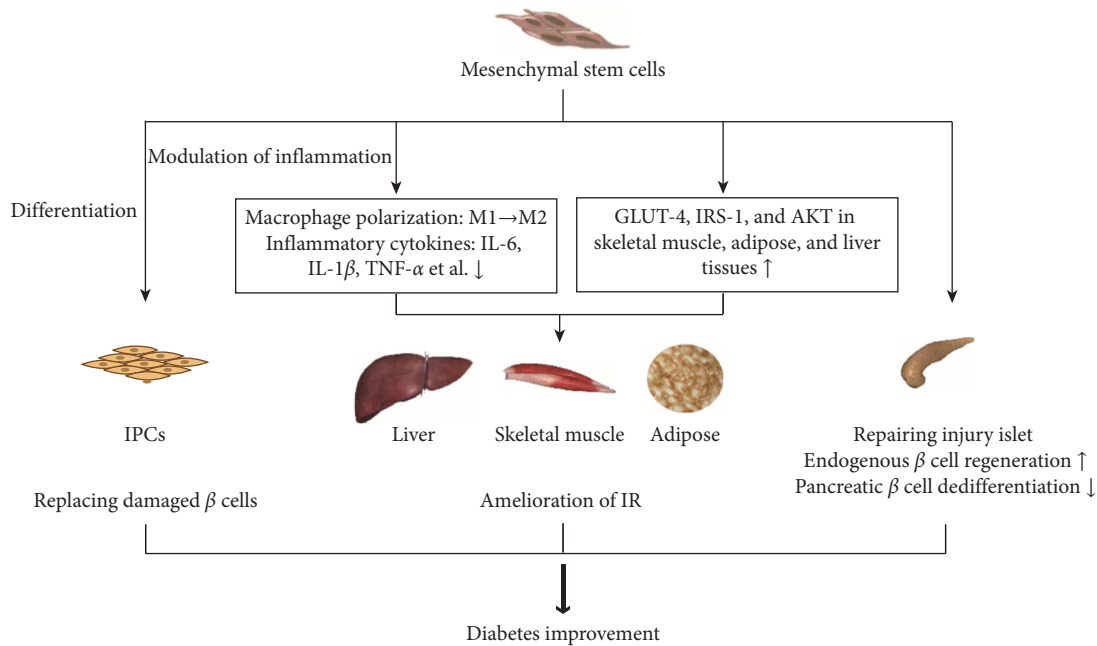


FIGURE 1: Mechanisms of MSC therapy for DM.

the pancreas of diabetic animals after infusion, and only a small portion differentiate into islet β cells, which is far from sufficient to explain the large number of new β -cells induced by cell therapy [68]. Therefore, there may be other mechanisms by which MSCs promote β -cell regeneration.

The study found that human bone marrow mesenchymal stem cells (hBM-MSCs) treatment increased the volume, number, and insulin immunoreactivity of diabetic mice. In addition, the study also observed that many pancreatic islets in diabetic mice treated with hBM-MSC germinated from the pancreatic duct, indicating that hBM-MSCs promote the repair and regeneration of endogenous pancreatic islets [69]. Similarly, studies by Hao et al. have shown that a single injection of BM-MSCs infusion can reduce the morphological and structural damage of islets, significantly restore the proportion of insulin-positive cells per islet, and increase the number of islets, though the numbers were still lower than normal. After multiple injections of BM-MSCs, the damaged islets gradually recovered to near normal levels, and the number of islets and the proportion of insulin-positive cells per islet also returned to almost normal levels [70]. In addition, coculture of human pancreatic islets with human adipose-derived MSCs overexpressing betatrophin can induce pancreatic islet proliferation, β -cell-specific transcription factor expression, and insulin production under the stimulation of glucose or KCl and Arg [71].

In addition to promoting islet proliferation and repair, MSCs also inhibit cell dedifferentiation. Pancreatic β -cell dedifferentiation means that islet β -cells lose their specific phenotype, resulting in reduced endocrine function, which is an important mechanism of T2DM [72]. Animal experiments have shown that in a mouse model of T2DM, the specific identity transcription factors Nkx6.1 and Pdx1 of pancreatic β -cells decrease, while the progenitor cell markers Neurogenin 3 (Ngn3) and OCT4 increase, affecting the

function and number of pancreatic β -cells [73]. Clinical trials have also confirmed that pancreatic β cells in T2DM patients have undergone significant dedifferentiation [74]. Wang et al. found that MSCs can alleviate β -cell dysfunction by reversing β -cell dedifferentiation in an IL-1Ra-mediated manner. The results of this study showed that increased expression of proinflammatory cytokines in human T2DM pancreatic islet cells activates MSCs to secrete an IL-1R antagonist (IL-1Ra), which acts on inflamed pancreatic islets and reverses β -cell dedifferentiation. In vivo experiments further showed that treatment of db/db mice with MSCs can improve blood sugar in db/db mice and reverse the dedifferentiation of pancreatic β -cells [75]. However, there are still few published studies on the dedifferentiation effect of MSCs on diabetic pancreatic β -cells. Further in-depth exploration will help researchers understand the mechanism of MSCs in the treatment of diabetes and provide new ideas for MSCs in the treatment of diabetes. Figure 1 summarizes the various mechanisms of MSC therapy for DM.

5. Conclusions

MSCs have an immunosuppressive effect and secrete a variety of cytokines, improve the microenvironment of diabetic patients, target insulin-resistant tissue, ameliorate the metabolic disorder of islet damage, and protect and regenerate islet β -cells, thereby reducing blood sugar levels. Due to the main immune mechanism of T1DM, MSCs can also effectively cure type 1 diabetes, precisely because of the immune regulation of MSCs. Among the clinical studies of cell therapy for type 1 diabetes, nearly half of them are studying MSC therapy (<http://www.clinicaltrials.gov>), which is sufficient to show that MSCs are likely to be an excellent candidate for the treatment of T1DM in the future. Moreover, for T2DM, MSCs can effectively ameliorate IR and

anti-inflammatory effects and can partially restore β -cell function, which can allow T2DM patients to control blood glucose without using any oral antidiabetic medications or exogenous insulin for a certain period of time.

Although clinical trials of MSC therapy are effective and have few side effects, there are still many problems that need to be solved before MSCs can be applied in the clinic. First, which is the better approach, transplanted MSCs or IPCs? Both methods work effectively regardless of whether MSCs or IPCs are transplanted into patients. However, Anshu Sharma [76] believes that because MSCs have immunoregulatory capabilities over IPCs, autologous MSCs grown in high-glucose medium for 10 to 13 passages may have beneficial effects in individuals at high risk of developing type 1 diabetes. From the clinical trials above, it can be found that the main clinical applications are UC-MSCs and BM-MSCs. MSCs derived from Wharton's jelly of human umbilical cord are generally from healthy and pregnant women with informed consent, and most bone marrow-derived cells are from patients themselves. In previous research, Katarzyna et al. [77] reported that dysfunction of MSCs isolated from T2DM patients may limit their potential therapeutic use as a result of oxidative stress and autophagy. This means that cells of autologous origin, similar to autologous BM-MSCs, will affect the efficacy of cells due to the influence of their own metabolic disorders. Conversely, MSCs allogeneic transplantation, in some cases, such as differentiation which may eliminate the immunoprivileged state of MSCs, may cause immune rejection, even though MSCs have more or less immunomodulatory capabilities [53, 54, 78, 79]. Therefore, which one is the best? The effects need to be compared with large samples from multiple centers, and then a standard clinical treatment needs to be developed, including specifications, injection site, injection method, injection dose, and other variables.

Data Availability

The data in Tables 2 and 3 were derived from <http://www.clinicaltrials.gov>.

Conflicts of Interest

The authors declare that they have no conflicts of interest regarding the publication of this paper.

Authors' Contributions

Qiulan Huang and Yanting Huang contributed equally to this work.

Acknowledgments

This work was supported by the National Natural Science Foundation of China (no. 81760150) and the Science and Technology Program of Jiangxi Province (20165BCB18019 and 20202ACBL206008). In addition, the authors thank Nanchang University for its innovative fund support for this work.

References

- [1] A. Cañibano-Hernández, L. Sáenz Del Burgo, A. Espona-Noguera, J. Ciriza, and J. L. Pedraz, "Current advanced therapy cell-based medicinal products for type-1-diabetes treatment," *International Journal of Pharmaceutics*, vol. 543, no. 1–2, pp. 107–120, 2018.
- [2] I. Raz, M. C. Riddle, J. Rosenstock et al., "Personalized management of hyperglycemia in type 2 diabetes: reflections from a Diabetes Care," *Diabetes Care*, vol. 36, no. 6, pp. 1779–1788, 2013.
- [3] M. McCall and A. M. Shapiro, "Update on islet transplantation," *Cold Spring Harbor Perspectives in Medicine*, vol. 2, no. 7, Article ID a007823, 2012.
- [4] A. M. J. Shapiro, J. R. T. Lakey, E. A. Ryan et al., "Islet transplantation in seven patients with type 1 diabetes mellitus using a glucocorticoid-free immunosuppressive regimen," *New England Journal of Medicine*, vol. 343, no. 4, pp. 230–238, 2000.
- [5] A. Gamble, A. R. Pepper, A. Bruni, and A. M. J. Shapiro, "The journey of islet cell transplantation and future development," *Islets*, vol. 10, no. 2, pp. 80–94, 2018.
- [6] M. A. Kanak, M. Takita, F. Kunnathodi, M. C. Lawrence, M. F. Levy, and B. Naziruddin, "Inflammatory response in islet transplantation," *International Journal of Endocrinology*, vol. 2014, Article ID 451035, , 2014.
- [7] M. Y. Zhao, Y. W. Fu, Q. Wang et al., "The role of mesenchymal stem cells in allogeneic hematopoietic stem cell transplantation for patients with refractory severe aplastic anemia," *Zhonghua Xue Ye Xue Za Zhi = Zhonghua Xueyexue Zazhi*, vol. 40, no. 9, pp. 726–731, 2019.
- [8] Z.-K. Wang, H.-J. Yu, F.-L. Cao et al., "Donor-derived marrow mesenchymal stromal cell co-transplantation following a haploidentical hematopoietic stem cell transplantation trail to treat severe aplastic anemia in children," *Annals of Hematology*, vol. 98, no. 2, pp. 473–479, 2019.
- [9] N. J. Scolding, M. Pasquini, S. C. Reingold, and J. A. Cohen, "Cell-based therapeutic strategies for multiple sclerosis," *Brain: A Journal of Neurology*, vol. 140, no. 11, pp. 2776–2796, 2017.
- [10] C. Xie, Y.-Q. Liu, Y.-T. Guan, and G.-X. Zhang, "Induced stem cells as a novel multiple sclerosis therapy," *Current Stem Cell Research and Therapy*, vol. 11, no. 4, pp. 313–320, 2016.
- [11] H. Wang, D. Wang, L. Yang et al., "Compact bone-derived mesenchymal stem cells attenuate nonalcoholic steatohepatitis in a mouse model by modulation of CD4 cells differentiation," *International Immunopharmacology*, vol. 42, pp. 67–73, 2017.
- [12] S. Bruno, M. B. Herrera Sanchez, C. Pasquino et al., "Human liver-derived stem cells improve fibrosis and inflammation associated with nonalcoholic steatohepatitis," *Stem Cells International*, vol. 2019, Article ID 6351091, , 2019.
- [13] B. Li, Y. Cheng, S. Yu et al., "Human umbilical cord-derived mesenchymal stem cell therapy ameliorates nonalcoholic fatty liver disease in obese type 2 diabetic mice," *Stem Cells International*, vol. 2019, Article ID 8628027, , 2019.
- [14] A. Lechner, Y.-G. Yang, R. A. Blacken, L. Wang, A. L. Nolan, and J. F. Habener, "No evidence for significant trans-differentiation of bone marrow into pancreatic -cells in vivo," *Diabetes*, vol. 53, no. 3, pp. 616–623, 2004.
- [15] Y. Zhang and Z. Dou, "Under a nonadherent state, bone marrow mesenchymal stem cells can be efficiently induced into functional islet-like cell clusters to normalize hyperglycemia in mice: a control study," *Stem Cell Research and Therapy*, vol. 5, no. 3, p. 66, 2014.

- [16] M. S. Anjum, A. Mehmood, F. Mahmood et al., "In vitro preconditioning of insulin-producing cells with growth factors improves their survival and ability to release insulin," *Journal of Biosciences*, vol. 43, no. 4, pp. 649–659, 2018.
- [17] H. Ranjbaran, S. Abediankenari, A. Khalilian, Z. Rahmani, M. Momeninezhad Amiri, and Z. Hosseini Khah, "Differentiation of Wharton's jelly derived mesenchymal stem cells into insulin producing cells," *International Journal of Hematology-Oncology and Stem Cell Research*, vol. 12, no. 3, pp. 220–229, 2018.
- [18] D. Gerace, R. Martiniello-Wilks, N. T. Nassif, S. Lal, R. Steptoe, and A. M. Simpson, "CRISPR-targeted genome editing of mesenchymal stem cell-derived therapies for type 1 diabetes: a path to clinical success?" *Stem Cell Research and Therapy*, vol. 8, no. 1, p. 62, 2017.
- [19] P. Gautam, A. Recino, R. D. Foale et al., "Promoter optimisation of lentiviral vectors for efficient insulin gene expression in canine mesenchymal stromal cells: potential surrogate beta cells," *The Journal of Gene Medicine*, vol. 18, no. 10, pp. 312–321, 2016.
- [20] J. H. Kim, S.-N. Park, and H. Suh, "Generation of insulin-producing human mesenchymal stem cells using recombinant adeno-associated virus," *Yonsei Medical Journal*, vol. 48, no. 1, pp. 109–119, 2007.
- [21] P. Hou, Y. Li, X. Zhang et al., "Pluripotent stem cells induced from mouse somatic cells by small-molecule compounds," *Science*, vol. 341, no. 6146, pp. 651–654, 2013.
- [22] A. M. Domouky, A. S. Hegab, A. Al-Shahat, and N. Raafat, "Mesenchymal stem cells and differentiated insulin producing cells are new horizons for pancreatic regeneration in type I diabetes mellitus," *The International Journal of Biochemistry and Cell Biology*, vol. 87, pp. 77–85, 2017.
- [23] M. M. Gabr, M. M. Zakaria, A. F. Refaie et al., "Insulin-producing cells from adult human bone marrow mesenchymal stromal cells could control chemically induced diabetes in dogs," *Cell Transplantation*, vol. 27, no. 6, pp. 937–947, 2018.
- [24] T. Thatava, T. Tayaramma, B. Ma, M. Rohde, and H. Mayer, "Chromatin-remodeling factors allow differentiation of bone marrow cells into insulin-producing cells," *Stem Cells (Dayton, Ohio)*, vol. 24, no. 12, pp. 2858–2867, 2006.
- [25] Z. Neshati, M. M. Matin, A. R. Bahrami, and A. Moghimi, "Differentiation of mesenchymal stem cells to insulin-producing cells and their impact on type 1 diabetic rats," *Journal of Physiology and Biochemistry*, vol. 66, no. 2, pp. 181–187, 2010.
- [26] H.-S. Wang, J.-F. Shyu, W.-S. Shen et al., "Transplantation of insulin-producing cells derived from umbilical cord stromal mesenchymal stem cells to treat NOD mice," *Cell Transplantation*, vol. 20, no. 3, pp. 455–466, 2011.
- [27] M. M. Gabr, M. M. Zakaria, A. F. Refaie et al., "Insulin-producing cells from adult human bone marrow mesenchymal stem cells control streptozotocin-induced diabetes in nude mice," *Cell Transplantation*, vol. 22, no. 1, pp. 133–145, 2013.
- [28] M. M. Gabr, M. M. Zakaria, A. F. Refaie et al., "Differentiation of human bone marrow-derived mesenchymal stem cells into insulin-producing cells: evidence for further maturation in vivo," *BioMed Research International*, vol. 2015, Article ID 575837, , 2015.
- [29] Y. Y. Li, H. H. Liu, H. L. Chen, and Y. P. Li, "Adipose-derived mesenchymal stem cells ameliorate STZ-induced pancreas damage in type 1 diabetes," *Bio-Medical Materials and Engineering*, vol. 22, no. 1-3, pp. 97–103, 2012.
- [30] C.-Y. Hsiao, T.-H. Chen, B.-S. Huang et al., "Comparison between the therapeutic effects of differentiated and undifferentiated Wharton's jelly mesenchymal stem cells in rats with streptozotocin-induced diabetes," *World Journal of Stem Cells*, vol. 12, no. 2, pp. 139–151, 2020.
- [31] S. Karimi, J. Ai, L. Khorsandi, D. Bijan Nejad, and G. Saki, "Vildagliptin enhances differentiation of insulin producing cells from adipose-derived mesenchymal stem cells," *Cell Journal*, vol. 20, no. 4, pp. 477–482, 2019.
- [32] K. M. Wartchow, L. Rodrigues, L. Z. Suardi et al., "Short-term protocols to obtain insulin-producing cells from rat adipose tissue: signaling pathways and in vivo effect," *International Journal of Molecular Sciences*, vol. 20, no. 10, 2019.
- [33] O. M. Hassanin, T. M. El-Masry, F. A. Abu-Zahra, S. El-Adawy, and A. M. Abdellah, "Immune-modulatory changes after transplantation therapy of insulin producing cells derived from Wharton's jelly human umbilical cord-mesenchymal stem cells in diabetes induced rats," *The Egyptian Journal of Immunology*, vol. 26, no. 1, pp. 55–67, 2019.
- [34] D. Daneman, "Type 1 diabetes," *The Lancet*, vol. 367, no. 9513, pp. 847–858, 2006.
- [35] G. Pan, Y. Mu, L. Hou, and J. Liu, "Examining the therapeutic potential of various stem cell sources for differentiation into insulin-producing cells to treat diabetes," *Annales d'Endocrinologie*, vol. 80, no. 1, pp. 47–53, 2019.
- [36] E. Latres, D. A. Finan, J. L. Greenstein, A. Kowalski, and T. J. Kieffer, "Navigating two roads to glucose normalization in diabetes: automated insulin delivery devices and cell therapy," *Cell Metabolism*, vol. 29, no. 3, pp. 545–563, 2019.
- [37] M. R. Ortiz, "Hypoglycemia in diabetes," *Nursing Clinics of North America*, vol. 52, no. 4, pp. 565–574, 2017.
- [38] A. M. Tourkmani, T. J. Alharbi, A. M. B. Rashed et al., "Hypoglycemia in type 2 diabetes mellitus patients: a review article," *Diabetes and Metabolic Syndrome: Clinical Research and Reviews*, vol. 12, no. 5, pp. 791–794, 2018.
- [39] P.-O. Carlsson, E. Schwarcz, O. Korsgren, and K. Le Blanc, "Preserved β -cell function in type 1 diabetes by mesenchymal stromal cells," *Diabetes*, vol. 64, no. 2, pp. 587–592, 2015.
- [40] J. Hu, X. Yu, Z. Wang et al., "Long term effects of the implantation of Wharton's jelly-derived mesenchymal stem cells from the umbilical cord for newly-onset type 1 diabetes mellitus," *Endocrine Journal*, vol. 60, no. 3, pp. 347–357, 2013.
- [41] J. Cai, Z. Wu, X. Xu et al., "Umbilical cord mesenchymal stromal cell with autologous bone marrow cell transplantation in established type 1 diabetes: a pilot randomized controlled open-label clinical study to assess safety and impact on insulin secretion," *Diabetes Care*, vol. 39, no. 1, pp. 149–157, 2016.
- [42] X. Liu, P. Zheng, X. Wang et al., "A preliminary evaluation of efficacy and safety of Wharton's jelly mesenchymal stem cell transplantation in patients with type 2 diabetes mellitus," *Stem Cell Research and Therapy*, vol. 5, no. 2, p. 57, 2014.
- [43] A. Bhansali, P. Asokumar, R. Walia et al., "Efficacy and safety of autologous bone marrow-derived stem cell transplantation in patients with type 2 diabetes mellitus: a randomized placebo-controlled study," *Cell Transplantation*, vol. 23, no. 9, pp. 1075–1085, 2014.
- [44] S. Bhansali, P. Dutta, V. Kumar et al., "Efficacy of autologous bone marrow-derived mesenchymal stem cell and mononuclear cell transplantation in type 2 diabetes mellitus: a randomized, placebo-controlled comparative study," *Stem Cells and Development*, vol. 26, no. 7, pp. 471–481, 2017.
- [45] D. Kong, X. Zhuang, D. Wang et al., "Umbilical cord mesenchymal stem cell transfusion ameliorated hyperglycemia in

- patients with type 2 diabetes mellitus," *Clinical Laboratory*, vol. 60, no. 12, pp. 1969–1976, 2014.
- [46] P. Chen, Q. Huang, X. J. Xu et al., "The effect of liraglutide in combination with human umbilical cord mesenchymal stem cells treatment on glucose metabolism and beta cell function in type 2 diabetes mellitus," *Zhonghua Nei Ke Za Zhi*, vol. 55, no. 5, pp. 349–354, 2016.
- [47] J. S. Skyler, V. A. Fonseca, K. R. Segal, J. Rosenstock, and M.-D. Investigators, "Allogeneic mesenchymal precursor cells in type 2 diabetes: a randomized, placebo-controlled, dose-escalation safety and tolerability pilot study," *Diabetes Care*, vol. 38, no. 9, pp. 1742–1749, 2015.
- [48] R. Jiang, Z. Han, G. Zhuo et al., "Transplantation of placenta-derived mesenchymal stem cells in type 2 diabetes: a pilot study," *Frontiers of Medicine*, vol. 5, no. 1, pp. 94–100, 2011.
- [49] M. Wang, L. Song, C. Strange, X. Dong, and H. Wang, "Therapeutic effects of adipose stem cells from diabetic mice for the treatment of type 2 diabetes," *Molecular Therapy*, vol. 26, no. 8, pp. 1921–1930, 2018.
- [50] Z. Deng, H. Xu, J. Zhang et al., "Infusion of adipose-derived mesenchymal stem cells inhibits skeletal muscle mitsugumin 53 elevation and thereby alleviates insulin resistance in type 2 diabetic rats," *Molecular Medicine Reports*, vol. 17, no. 6, pp. 8466–8474, 2018.
- [51] H.-J. Kim, Q. Li, W.-J. Song et al., "Fibroblast growth factor-1 as a mediator of paracrine effects of canine adipose tissue-derived mesenchymal stem cells on in vitro-induced insulin resistance models," *BMC Veterinary Research*, vol. 14, no. 1, p. 351, 2018.
- [52] Y. Xin, X. Jiang, Y. Wang et al., "Insulin-producing cells differentiated from human bone marrow mesenchymal stem cells in vitro ameliorate streptozotocin-induced diabetic hyperglycemia," *PloS One*, vol. 11, no. 1, Article ID e0145838, 2016.
- [53] N. Mohammadi, A. Mardomi, H. Hassannia et al., "Mouse bone marrow-derived mesenchymal stem cells acquire immunogenicity concurrent with differentiation to insulin-producing cells," *Immunobiology*, vol. 225, no. 5, Article ID 151994, 2020.
- [54] X.-P. Huang, Z. Sun, Y. Miyagi et al., "Differentiation of allogeneic mesenchymal stem cells induces immunogenicity and limits their long-term benefits for myocardial repair," *Circulation*, vol. 122, no. 23, pp. 2419–2429, 2010.
- [55] A. Banga, L. V. Greder, J. R. Dutton, and J. M. W. Slack, "Stable insulin-secreting ducts formed by reprogramming of cells in the liver using a three-gene cocktail and a PPAR agonist," *Gene Therapy*, vol. 21, no. 1, pp. 19–27, 2014.
- [56] S. Belame Shivakumar, D. Bharti, R. Baregundi Subbarao et al., "Pancreatic endocrine-like cells differentiated from human umbilical cords Wharton's jelly mesenchymal stem cells using small molecules," *Journal of Cellular Physiology*, vol. 234, no. 4, pp. 3933–3947, 2019.
- [57] S. P. Sah, B. Singh, S. Choudhary, and A. Kumar, "Animal models of insulin resistance: a review," *Pharmacological Reports*, vol. 68, no. 6, pp. 1165–1177, 2016.
- [58] Y. Si, Y. Zhao, H. Hao et al., "Infusion of mesenchymal stem cells ameliorates hyperglycemia in type 2 diabetic rats: identification of a novel role in improving insulin sensitivity," *Diabetes*, vol. 61, no. 6, pp. 1616–1625, 2012.
- [59] A. P. Waller, T. A. Burns, M. C. Mudge, J. K. Belknap, and V. A. Lacombe, "Insulin resistance selectively alters cell-surface glucose transporters but not their total protein expression in equine skeletal muscle," *Journal of Veterinary Internal Medicine*, vol. 25, no. 2, pp. 315–321, 2011.
- [60] H. V. Lin, H. Ren, V. T. Samuel et al., "Diabetes in mice with selective impairment of insulin action in Glut4-expressing tissues," *Diabetes*, vol. 60, no. 3, pp. 700–709, 2011.
- [61] H. Ruan, N. Hacohen, T. R. Golub, L. Van Parijs, and H. F. Lodish, "Tumor necrosis factor- suppresses adipocyte-specific genes and activates expression of preadipocyte genes in 3T3-L1 adipocytes: nuclear factor- B activation by TNF- is obligatory," *Diabetes*, vol. 51, no. 5, pp. 1319–1336, 2002.
- [62] X. Sun, H. Hao, Q. Han et al., "Human umbilical cord-derived mesenchymal stem cells ameliorate insulin resistance by suppressing NLRP3 inflammasome-mediated inflammation in type 2 diabetes rats," *Stem Cell Research and Therapy*, vol. 8, no. 1, p. 241, 2017.
- [63] L. R. Gao, N. K. Zhang, Y. Zhang et al., "Overexpression of apelin in Wharton' jelly mesenchymal stem cell reverses insulin resistance and promotes pancreatic beta cell proliferation in type 2 diabetic rats," *Stem Cell Research and Therapy*, vol. 9, no. 1, p. 339, 2018.
- [64] Z. Xie, H. Hao, C. Tong et al., "Human umbilical cord-derived mesenchymal stem cells elicit macrophages into an anti-inflammatory phenotype to alleviate insulin resistance in type 2 diabetic rats," *Stem Cells*, vol. 34, no. 3, pp. 627–639, 2016.
- [65] J. Gao, Y. Cheng, H. Hao et al., "Decitabine assists umbilical cord-derived mesenchymal stem cells in improving glucose homeostasis by modulating macrophage polarization in type 2 diabetic mice," *Stem Cell Research and Therapy*, vol. 10, no. 1, p. 259, 2019.
- [66] Q. Zhang, H. Hao, Z. Xie et al., "M2 macrophages infusion ameliorates obesity and insulin resistance by remodeling inflammatory/macrophages' homeostasis in obese mice," *Molecular and Cellular Endocrinology*, vol. 443, pp. 63–71, 2017.
- [67] A. Ianus, G. G. Holz, N. D. Theise, and M. A. Hussain, "In vivo derivation of glucose-competent pancreatic endocrine cells from bone marrow without evidence of cell fusion," *Journal of Clinical Investigation*, vol. 111, no. 6, pp. 843–850, 2003.
- [68] D. Hess, L. Li, M. Martin et al., "Bone marrow-derived stem cells initiate pancreatic regeneration," *Nature Biotechnology*, vol. 21, no. 7, pp. 763–770, 2003.
- [69] R. H. Lee, M. J. Seo, R. L. Reger et al., "Multipotent stromal cells from human marrow home to and promote repair of pancreatic islets and renal glomeruli in diabetic NOD/scid mice," *Proceedings of the National Academy of Sciences*, vol. 103, no. 46, pp. 17438–17443, 2006.
- [70] H. Hao, J. Liu, J. Shen et al., "Multiple intravenous infusions of bone marrow mesenchymal stem cells reverse hyperglycemia in experimental type 2 diabetes rats," *Biochemical and Biophysical Research Communications*, vol. 436, no. 3, pp. 418–423, 2013.
- [71] L.-L. Sun, T.-J. Liu, L. Li et al., "Transplantation of beta-trophin-expressing adipose-derived mesenchymal stem cells induces β -cell proliferation in diabetic mice," *International Journal of Molecular Medicine*, vol. 39, no. 4, pp. 936–948, 2017.
- [72] F. Cinti, R. Bouchi, J. Y. Kim-Muller et al., "Evidence of β -cell dedifferentiation in human type 2 diabetes," *The Journal of Clinical Endocrinology & Metabolism*, vol. 101, no. 3, pp. 1044–1054, 2016.
- [73] M. Bensellam, J.-C. Jonas, and D. R. Laybutt, "Mechanisms of β -cell dedifferentiation in diabetes: recent findings and future research directions," *Journal of Endocrinology*, vol. 236, no. 2, pp. R109–R143, 2018.
- [74] J. Sun, Q. Ni, J. Xie et al., " β -Cell dedifferentiation in patients with T2D with adequate glucose control and nondiabetic

- chronic pancreatitis,” *The Journal of Clinical Endocrinology and Metabolism*, vol. 104, no. 1, pp. 83–94, 2019.
- [75] L. Wang, T. Liu, R. Liang et al., “Mesenchymal stem cells ameliorate β cell dysfunction of human type 2 diabetic islets by reversing β cell dedifferentiation,” *EBioMedicine*, vol. 51, Article ID 102615, 2020.
- [76] A. Sharma and R. Rani, “Do we really need to differentiate mesenchymal stem cells into insulin-producing cells for attenuation of the autoimmune responses in type 1 diabetes: immunoprophylactic effects of precursors to insulin-producing cells,” *Stem Cell Research and Therapy*, vol. 8, no. 1, p. 167, 2017.
- [77] K. Kornicka, J. Houston, and K. Marycz, “Dysfunction of mesenchymal stem cells isolated from metabolic syndrome and type 2 diabetic patients as result of oxidative stress and autophagy may limit their potential therapeutic use,” *Stem Cell Reviews and Reports*, vol. 14, no. 3, pp. 337–345, 2018.
- [78] A. J. Nauta, G. Westerhuis, A. B. Kruisselbrink, E. G. A. Lurvink, R. Willemze, and W. E. Fibbe, “Donor-derived mesenchymal stem cells are immunogenic in an allogeneic host and stimulate donor graft rejection in a nonmyeloablative setting,” *Blood*, vol. 108, no. 6, pp. 2114–2120, 2006.
- [79] J. Rossignol, C. Boyer, R. Thinard et al., “Mesenchymal stem cells induce a weak immune response in the rat striatum after allo or xenotransplantation,” *Journal of Cellular and Molecular Medicine*, vol. 13, no. 8b, pp. 2547–2558, 2009.