



Contents lists available at [ScienceDirect](https://www.sciencedirect.com)
American Heart Journal Plus:
Cardiology Research and Practice

journal homepage: www.sciencedirect.com/journal/american-heart-journal-plus-cardiology-research-and-practice



Research paper

Impact of pre-existing heart failure on 60-day outcomes in patients hospitalized with COVID-19



Max Ruge^{a,*}, Joanne Michelle D. Gomez^b, Jeanne du Fay de Lavallaz^c, Alexander Hlepas^c, Annas Rahman^c, Priya Patel^c, Clay Hoster^c, Prutha Lavani^b, Gatha G. Nair^b, Nusrat Jahan^b, J. Alan Simmons^d, Anupama K. Rao^b, William Cotts^{b,e}, Kim Williams^b, Annabelle Santos Volgman^b, Karolina Marinescu^b, Tisha Suboc^b

^a Department of Internal Medicine, Thomas Jefferson University Hospital, Philadelphia, PA, United States of America

^b Division of Cardiology, Rush University Medical Center, Chicago, IL, United States of America

^c Department of Internal Medicine, Rush University Medical Center, Chicago, IL, United States of America

^d Research Core, Rush University Medical Center, Chicago, IL, United States of America

^e Advocate Christ Medical Center, Oaklawn, IL, United States of America

ARTICLE INFO

Keywords:

Heart failure
Mortality/survival
Complications
COVID-19

ABSTRACT

Background: In the coronavirus disease 2019 (COVID-19) global pandemic, patients with cardiovascular disease represent a vulnerable population with higher risk for contracting COVID-19 and worse prognosis with higher case fatality rates. However, the relationship between COVID-19 and heart failure (HF) is unclear, specifically whether HF is an independent risk factor for severe infection or if other accompanying comorbidities are responsible for the increased risk.

Methods: This is a retrospective analysis of 1331 adult patients diagnosed with COVID-19 infection between March and June 2020 admitted at Rush University System for Health (RUSH) in metropolitan Chicago, Illinois, USA. Patients with history of HF were identified by International Classification of Disease, Tenth Revision (ICD-10) code assignments extracted from the electronic medical record. Propensity score matching was utilized to control for the numerous confounders, and univariable logistic regression was performed to assess the relationship between HF and 60-day morbidity and mortality outcomes.

Results: The propensity score matched cohort consisted of 188 patients in both the HF and no HF groups. HF patients did not have lower 60-day mortality (OR 0.81; $p = 0.43$) compared to patients without HF. However, those with HF were more likely to require readmission within 60 days (OR 2.88; $p < 0.001$) and sustain myocardial injury defined as troponin elevation within 60 days (OR 3.14; $p < 0.05$).

Conclusions: This study highlights the complex network of confounders present between HF and COVID-19. When balanced for these numerous factors, those with HF appear to be at no higher risk of 60-day mortality from COVID-19 but are at increased risk for morbidity.

1. Introduction

Coronavirus disease-2019 (COVID-19) has rapidly evolved into a global pandemic responsible for 2.5 million deaths worldwide as of March 2021 [1,2]. Patients with cardiovascular comorbidities are at increased risk for complications and severe COVID-19 infection though it remains unclear whether pre-existing heart failure (HF) is by itself an independent risk factor for severe infection [1,3,4].

Studies that have specifically explored the impact of pre-existing HF

on COVID-19 morbidity and mortality, each has found that those with HF have a higher in-hospital mortality rate [3,5–8]. Some of these studies also found higher rates of other adverse events including acute kidney injury, acute HF, mechanical ventilation, and myocardial injury [3,5,6]. However, isolating the effect of HF on COVID-19 outcomes is difficult due to the complex network of confounding variables present. For example, in one study, though HF patients had higher in-hospital mortality rates, after adjustment for comorbidities, HF itself was not an independent risk factor of mortality [6]. Conversely, others have

* Corresponding author at: Thomas Jefferson University Hospital, 111 S 11th St, Philadelphia, PA 19107, United States of America.

E-mail address: Max.Ruge@jefferson.edu (M. Ruge).

<https://doi.org/10.1016/j.ahjo.2021.100022>

Available online 15 June 2021

2666-6022/© 2021 The Author(s).

Published by Elsevier Inc.

This is an open access article under the CC BY-NC-ND license

(<http://creativecommons.org/licenses/by-nc-nd/4.0/>).

found that HF is an independent risk factor after adjusting for these comorbidities [3,8,9].

Isolating and fully understanding the effects of pre-existing HF on COVID-19 infection is crucial as healthcare for patients with HF has been restructured during the pandemic. Therefore, identifying risk factors and high-risk patients is important for appropriate resource allocation and triage [10].

This study of 1331 hospitalized COVID-19 patients sought to compare outcomes between those with and without a previous HF diagnosis. We investigated additional measures of in-hospital morbidity such as need for renal replacement therapy, intubation, and inotropic agents, as well as rates of readmission, and mortality at 60 days follow-up. We utilized propensity score matching to reduce the effects of any cohort differences other than existing HF to investigate whether HF is an independent risk factor for severe COVID-19 infection or if other accompanying comorbidities are responsible for the increased risk.

2. Methods

This retrospective cohort study consisted of patients ≥ 18 years old diagnosed with COVID-19 admitted to Rush University System for Health (RUSH) between March to June 2020. Data was collected through a combination of automatic and manual data extraction, and patients were followed through medical record review for a minimum of 60 days after the date of initial COVID-19 admission.

HF data was automatically extracted using International Statistical Classification of Diseases and Related Health Problems, 10th revision (ICD-10) codes I50.20, I50.21, I50.22, I50.23, I50.30, I50.31, I50.33, I50.32, I50.40, I50.41, I50.42, and I50.43 (Supplemental Table 1).

Baseline characteristics included age, sex, body mass index (BMI), race, and a variety of comorbidities that were included as covariables in propensity score matching (Table 1). Covariables were chosen based on clinical relevance with emphasis on including factors with a known association with both HF and COVID-19 in the baseline characteristics.

Imputation was performed on race (7.6% missing), smoking status (9.2% missing), BMI (1.4% missing) through modeling with multinomial logistic regression, linear regression, and logistic regression, respectively.

Table 1

Patient characteristics pre- and post-matching by heart failure status.

	Before matching				After matching			
	No HF	HF	p-Value	SMD	No HF	HF	p-Value	SMD
n	1075	256			188	188		
Age (mean (SD))	55.22 (16.31)	65.08 (15.51)	<0.001	0.620	64.11 (15.70)	63.54 (16.03)	0.728	0.036
Male (%)	607 (56.5)	131 (51.2)	0.144	0.106	107 (56.9)	104 (55.3)	0.835	0.032
BMI (mean (SD))	28.62 (7.34)	30.24 (8.61)	0.002	0.203	29.73 (8.32)	29.96 (8.43)	0.791	0.027
Race (%)			<0.001	0.497			0.796	0.070
White	312 (29.0)	62 (24.2)			47 (25.0)	51 (27.1)		
Other	405 (37.7)	51 (19.9)			46 (24.5)	41 (21.8)		
Black or African American	358 (33.3)	143 (55.9)			95 (50.5)	96 (51.1)		
Comorbidities								
Current smoker (%)	59 (5.5)	9 (3.5)	0.258	0.095	9 (4.8)	6 (3.2)	0.598	0.082
Atrial fibrillation (%)	95 (8.8)	88 (34.4)	<0.001	0.653	52 (27.7)	49 (26.1)	0.816	0.036
Coronary artery disease (%)	176 (16.4)	152 (59.4)	<0.001	0.989	93 (49.5)	93 (49.5)	1.000	<0.001
Hypertension (%)	597 (55.5)	226 (88.3)	<0.001	0.782	163 (86.7)	160 (85.1)	0.767	0.046
Chronic kidney disease (%)	175 (16.3)	152 (59.4)	<0.001	0.992	92 (48.9)	96 (51.1)	0.757	0.043
COPD (%)	38 (3.5)	51 (19.9)	<0.001	0.527	19 (10.1)	25 (13.3)	0.422	0.099
Diabetes mellitus (%)	441 (41.0)	163 (63.7)	<0.001	0.466	111 (59.0)	110 (58.5)	1.000	0.011
Asthma (%)	128 (11.9)	43 (16.8)	0.046	0.140	25 (13.3)	29 (15.4)	0.659	0.061
Cancer (%)	97 (9.0)	42 (16.4)	0.001	0.223	31 (16.5)	27 (14.4)	0.668	0.059
Ventricular arrhythmia (%)	19 (1.8)	32 (12.5)	<0.001	0.426	16 (8.5)	18 (9.6)	0.857	0.037
Stroke (%)	104 (9.7)	74 (28.9)	<0.001	0.503	43 (22.9)	43 (22.9)	1.000	<0.001
Acute myocardial infarction (%)	94 (8.7)	89 (34.8)	<0.001	0.665	52 (27.7)	48 (25.5)	0.726	0.048
DVT or pulmonary embolism (%)	107 (10.0)	62 (24.2)	<0.001	0.386	39 (20.7)	36 (19.1)	0.796	0.040

HF = heart failure; SMD = standardized mean difference; SD = standard deviation; BMI = body mass index; COPD = chronic obstructive pulmonary disorder; DVT = deep vein thrombosis; PE = pulmonary embolism.

To balance baseline characteristics, we utilized propensity score matching. Whereas prior studies concluded that those with HF have higher mortality rates using multivariable regression to adjust for confounding variables, proponents of propensity score matching argue it is better able to generate a similar distribution of baseline characteristics and comorbidities between the groups, which more closely approximates a quasi-randomized controlled trial [3,6,8,9,11,12]. Due to the large number of intertwined comorbidities that exist with HF patients, creating similar groups by optimally balancing covariates is critical. In a simulation study comparing the two statistical methods, propensity score methods were superior at estimating effect sizes than multivariable regression modeling [11].

Propensity scores were calculated using a logistic regression model based on pre-defined covariates. Matching was performed using a 1:1 nearest-neighbor technique with a caliper width of 0.10, an even more stringent caliper than usually recommended for observational studies [13].

The primary outcome was 60-day mortality. Secondary outcomes included need for intubation, need for tracheostomy, need for intensive care unit, vasopressor requirement, and inotrope requirement.

Patient records were also reviewed for the occurrence of major adverse cardiovascular events (MACE) up to 60 days from hospital admission, which included myocardial injury (defined as cardiac troponin $I > 0.09$ ng/mL), life-threatening arrhythmia, deep venous thrombosis, symptoms of acute HF, acute renal failure requiring renal replacement therapy, or pulmonary embolism. Data was also collected on readmission and mortality. If there was no documentation of mortality, the patient was assumed to have died.

Baseline characteristics and the incidence of key outcomes were also compared between the matched and non-matched HF patients to better understand why they went unmatched and to determine whether they had significant differences in the frequency of outcomes.

2.1. Statistical analysis

All data analysis, including statistical analyses, was performed using RStudio version 1.3 (Boston, Massachusetts). Propensity score analysis and matching were performed using the MatchIt package. Kaplan-Meier survival estimates were generated and plotted with the survival and

survminer packages respectively.

Continuous variables are reported with mean and standard deviation for normally distributed variables and with median and interquartile range for variables not normally distributed. Categorical variables are reported as counts and proportions. Continuous variables were compared with *t*-tests, and categorical variables with the Pearson chi-square test.

Univariable logistic regression was performed with presence of HF as the predictor variable for the various outcome variables, both pre- and post-matching. Odds ratios (OR) with 95% confidence intervals (CI) are reported. The threshold for statistical significance was set to a *p*-value < 0.05.

3. Results

Among 1331 patients, 256 (19.2%) had a history of HF. Patients with HF were more likely to be older (*p* < 0.001), higher BMI (*p* < 0.01), and African American (*p* < 0.001) (Table 1). Those with HF were also more likely to have a variety of comorbidities including a history of atrial fibrillation, coronary artery disease, hypertension, chronic kidney disease, chronic obstructive pulmonary disorder, diabetes mellitus, asthma, cancer, ventricular arrhythmias, stroke, acute myocardial infarction, and DVT or PE (Table 1).

Propensity score matching using all the pre-defined variables in Table 1 allowed for the matching of 188 in both the heart failure and no heart failure groups. Post-matching, all variables in Table 1 had a standardized mean difference (SMD) less than 0.1, indicating a well-balanced match.

After propensity score matching, patients with HF did not have an increased risk of 60-day mortality versus those without HF (14.4% vs 13.8%; OR 1.04 [CI: 0.58–1.87]; *p* = 0.88) (Fig. 1, Table 2). Those with HF also had similar rates of intubation, tracheostomy, need for intensive care unit, and vasopressor or inotropic requirement as those without HF. HF patients were however more likely to require readmission within 60 days (26.6% vs 11.2%; OR 2.88 [CI: 1.67–5.12]; *p* < 0.001).

From day 1 of their hospitalization to a minimum of day 60, those with HF did not have an increased risk of MACE (27.7% vs 22.3%; OR 1.33 [CI: 0.83–2.13]; *p* = 0.23) (Table 3). However, when looking at the individual MACE, those with HF were more likely to have myocardial injury (6.4% vs 2.1%; OR 3.14 [CI: 1.07–11.38]; *p* < 0.05) and have an

acute HF exacerbation (11.2% vs 0.5%; OR 23.51 [CI: 4.84–423.82]; *p* < 0.01) (Fig. 2). Those with and without HF were similarly likely to have deep venous thrombosis, life-threatening arrhythmia, need for renal replacement therapy, and pulmonary embolism.

When analyzing only those with HF, the 68 non-matched patients tended to be older (*p* < 0.01) and were more likely to be female (*p* < 0.05) than their 188 matched counterparts (Supplemental Table 2). In addition, non-matched patients were more likely to have a variety of comorbidities including atrial fibrillation (*p* < 0.001), coronary artery disease (*p* < 0.001), hypertension (*p* < 0.01), chronic kidney disease (*p* < 0.001), COPD (*p* < 0.001), diabetes mellitus (*p* < 0.01), ventricular arrhythmia (*p* < 0.05), and acute myocardial infarction (*p* < 0.01). Non-matched HF patients did not have increased risk of the key study outcomes including 60-day mortality, requiring ICU, and overall MACE.

4. Discussion

4.1. HF readmissions and outcomes of HF in COVID-19 infection

Compared to patients without HF, pre-existing HF did not appear to be an independent risk factor for increased 60-day mortality in our cohort. While prior studies have observed higher mortality in HF patients with COVID-19, our study design utilized propensity score matching to reduce bias and create well balanced groups. This reduction in bias is particularly important in isolating the effect of HF on COVID-19 as numerous comorbidities have independent and potentially confounding relationships between these two diseases including diabetes mellitus, chronic kidney disease, chronic respiratory disease, tobacco use, and more [3,14]. Our findings further echo this importance as prior to matching, an approximately 2-fold higher risk of mortality was present, which approximates that reported in prior studies (Table 2) [3,8]. However, after balance was achieved through matching, this mirage of an effect was no longer observable. Of note, Rey et al. similarly demonstrated a higher mortality rate in HF patients, but when adjusted for comorbidities, they found that HF was not an independent risk factor for mortality [6].

Our findings suggest that the variables controlled for during our propensity score matching are the drivers of the higher mortality in HF patients with COVID-19 rather than the HF itself. In examining prior studies asking this same research question, each has adjusted for different comorbidities, which could in part be responsible for differences in results (Supplemental Table 3). For example, the largest study of COVID-19 patients with pre-existing HF did not control for coronary artery disease, which is associated with HF and worse COVID-19 outcomes [9]. To our knowledge, our study provides the most comprehensive attempt, to date, at controlling for confounders between HF and COVID-19.

Importantly, pre-existing HF was a significant predictor for readmission and the occurrence of an acute HF exacerbation within 60 days. Prior studies assessing the association between HF and increased readmissions have shown mixed results, but many of these studies have been limited by smaller sample sizes and shorter follow-up durations [15–17]. In our study cohort, 159 total patients (pre-matching) were readmitted during 60-days follow-up, which provided a robust sample for analysis. With the continued spread of COVID-19, high rates of readmission in patients with COVID-19 and history of HF requires more structured remote care for HF patients [10].

4.2. HF and myocardial injury in COVID-19

While myocardial injury is known to occur in up to 60% of hospitalized COVID-19 patients, our data suggest that those with pre-existing HF are at increased risk for this complication. Several mechanisms of COVID-19 induced acute myocardial injury have been proposed including myocyte damage from hypoxia, inflammation, down-regulation of angiotensin converting enzyme 2 (ACE2),

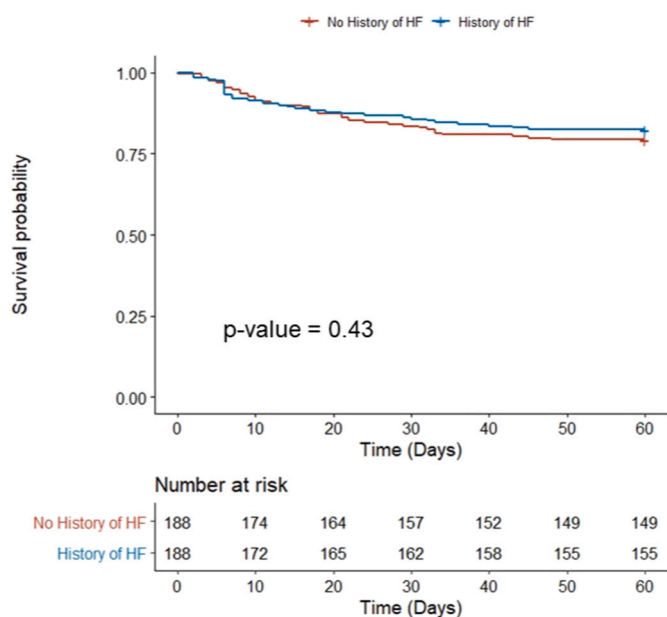


Fig. 1. Kaplan-Meier 60-day survival estimates in COVID-19 patients with and without pre-existing heart failure.

Table 2
Outcomes by heart failure status, both pre- and post-matching.

	Before matching			After matching		
	No HF	HF	p-Value	No HF	HF	p-Value
In-hospital mortality						
Incidence (%)	7.9	14.5	–	13.8	14.4	
Univariable OR (95% CI)	Ref	1.97 (1.29–2.95)	<0.01	Ref	1.04 (0.58–1.87)	0.88
60-day mortality						
Incidence (%)	10	18.8	–	20.7	17.6	
Univariable OR (95% CI)	Ref	2.07 (1.42–2.98)	<0.001	Ref	0.81 (0.48–1.36)	0.43
Intubation						
Incidence (%)	17.6	30.1	–	28.7	28.2	
Univariable OR (95% CI)	Ref	2.02 (1.47–2.74)	<0.001	Ref	0.97 (0.62–1.53)	0.91
Need for tracheostomy						
Incidence (%)	1.9	6.3	–	4.3	4.8	
Univariable OR (95% CI)	Ref	3.52 (1.77–6.87)	<0.001	Ref	1.13 (0.42–3.08)	0.80
Need for ICU						
Incidence (%)	32.7	48.8	–	43.6	46.8	
Univariable OR (95% CI)	Ref	1.97 (1.49–2.60)	<0.001	Ref	1.14 (0.76–1.71)	0.53
Need for pressors						
Incidence (%)	16.7	28.9	–	28.2	27.7	
Univariable OR (95% CI)	Ref	2.02 (1.47–2.76)	<0.001	Ref	0.97 (0.62–1.53)	0.91
Need for inotropes						
Incidence (%)	0.9	6.6	–	2.7	5.3	
Univariable OR (95% CI)	Ref	7.58 (3.48–17.4)	<0.001	Ref	2.06 (0.72–6.71)	0.18
Readmitted						
Incidence (%)	8.3	27.3	–	11.2	26.6	
Univariable OR (95% CI)	Ref	4.17 (2.93–5.91)	<0.001	Ref	2.88 (1.67–5.12)	<0.001

HF = heart failure; OR = odds ratio; CI = confidence interval; Ref = reference; ICU = intensive care unit.

Table 3
Major adverse cardiovascular events (MACE) by heart failure status, both pre- and post-matching.

Major adverse cardiovascular events	Before matching			After matching		
	No HF	HF	p-Value	No HF	HF	p-Value
Myocardial injury						
Incidence (%)	0.8	7.4	–	2.1	6.4	
Univariable OR (95% CI)	Ref	9.50 (4.36–22.3)	<0.001	Ref	3.14 (1.07–11.38)	<0.05
Life-threatening arrhythmia						
Incidence (%)	4.7	12.1	–	8.5	12.2	
Univariable OR (95% CI)	Ref	2.82 (1.75–4.50)	<0.001	Ref	1.50 (0.77–2.98)	0.24
Deep venous thrombosis						
Incidence (%)	2	5.1	–	2.7	3.7	
Univariable OR (95% CI)	Ref	2.69 (1.29–5.38)	<0.01	Ref	1.42 (0.44–4.86)	0.56
HF exacerbation						
Incidence (%)	0.1	10.9	–	0.5	11.2	
Univariable OR (95% CI)	Ref	65.9 (19.6–409.9)	<0.001	Ref	23.51 (4.84–423.82)	<0.01
Renal replacement therapy						
Incidence (%)	4.2	12.1	–	10.1	10.6	
Univariable OR (95% CI)	Ref	3.15 (1.94–5.07)	<0.001	Ref	1.06 (0.54–2.07)	0.87
Pulmonary embolism						
Incidence (%)	2.8	3.9	–	4.8	4.8	
Univariable OR (95% CI)	Ref	1.42 (0.65–2.84)	0.36	Ref	1.00 (0.38–2.62)	1.00
Total						
Incidence (%)	12.2	29.7	–	22.3	27.7	
Univariable OR (95% CI)	Ref	3.04 (2.19–4.20)	<0.001	Ref	1.33 (0.83–2.13)	0.23

HF = heart failure; OR = odds ratio; CI = confidence interval; Ref = reference.

hypercoagulability leading to development of coronary microvascular thrombi, and supply-demand mismatch leading to plaque rupture and myocardial infarction [18,19]. It is unclear why HF patients are at increased risk, but troponin elevation is prevalent in patients with chronic HF and present in nearly all patients presenting with acute decompensated HF [20]. Therefore, this suggests that the increased risk for myocardial injury could be due to a combination of both COVID-19 effects on myocardium and a generalized increased risk for troponin elevation in HF patients.

4.3. Outcome duration of follow up

While many COVID-19 studies focus on in-hospital outcomes, our

follow up of 60 days provides critical information surrounding both in-hospital and post-discharge events. While COVID-19 has significantly changed health care delivery across virtually all specialties, special consideration must be given to HF patients due to their baseline increased risk for complications, readmission, and overall mortality. In fact, the most common cause of readmission in Medicare patients is chronic heart failure [21]. Therefore, our data provide a longitudinal view of adverse outcomes from COVID-19 in patient population known to be at risk for medical complications.

4.4. Propensity matching effects

We also analyzed the non-matched HF patients in comparison to

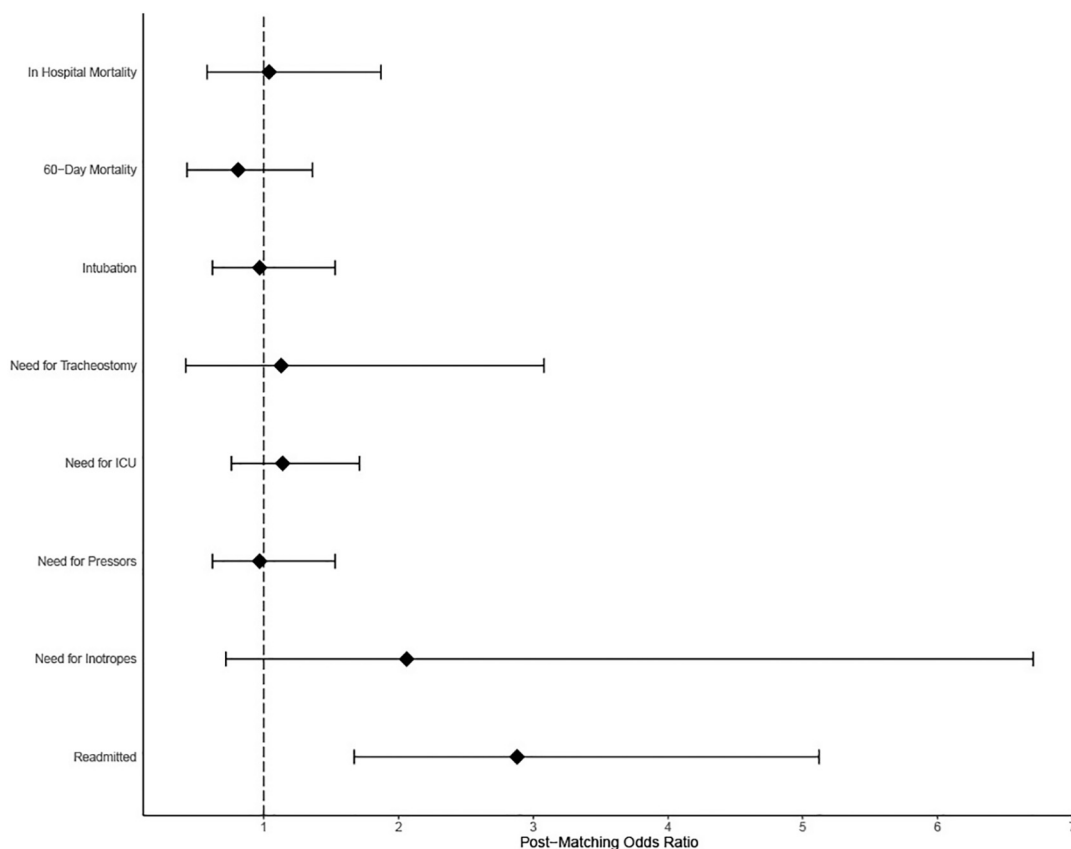


Fig. 2. Odds ratios with 95% confidence intervals for various COVID-19 outcomes if pre-existing heart failure is present.

matched HF patients to provide insight into why these patients went unmatched and whether they may represent a sicker subpopulation of HF patients that could limit generalizability of our study. At baseline, the non-matched patients were older and had increased frequency of a variety of comorbidities. However, there was no difference in the frequency of key outcomes between the matched and non-matched HF patients, indicating that this is not a limitation of this study.

4.5. External validity of results

In our cohort, approximately 1 of every 5 patients admitted with COVID-19 had a pre-existing diagnosis of HF, which is considerably higher than prior HF studies [3,6,8,9]. Our mortality rate for both the entire cohort (9.2%) and heart failure patients (18.8%) was also lower than these prior HF studies. This difference is, in part, attributable to differences in city-specific disease burdens at the time of the study. For example, 3 of the major HF studies took place in New York City from late February to June 2020, Italy from March to April 2020, and Madrid, Spain from March to April 2020. Each of these areas was profoundly strained by disease burden during the time of the study, which therefore limits each's external validity. In contrast, Chicago was experiencing a more manageable disease burden at this time. As of April 13, 2020, New York City had the most reported cases of any city in the United States at 106,764, which included 7154 deaths [22]. Chicago on the other hand, while fifth overall, had only 15,474 reported cases and 543 deaths [22]. Internationally, the United States' 7-day rolling average of COVID-19 confirmed deaths per million people on April 1, 2020 was 2.29 compared to 13.55 and 17.54 in Italy and Spain, respectively [23]. Because Chicago as a whole was less strained at the time these data were collected, our data are likely more applicable to other populations.

4.6. Study limitations

The use of electronic health records has inherent sources for error. In this case, identification of diagnosis of HF was done with the use of ICD-10 codes, which have been shown to be specific (96.8%) but not sensitive (75.3%) for identifying a prior HF diagnosis [24]. Another potential source of error is in the method of COVID-19 diagnosis. Confirmed COVID-19 patients were included based on either positive polymerase chain reaction (PCR) testing or point-of-care rapid testing, with each test subject to their own sensitivity and specificities. Based on data using multiple cohort studies, the overall sensitivity and specificity of COVID-19 testing has been estimated to be 71% and 100%, respectively [25]. Lastly, readmission rates were only captured for patients who had a subsequent hospitalization to a health care system in or around Chicago that also use the EPIC electronic medical record.

5. Conclusions

In a propensity-matched population of hospitalized COVID-19 patients in metropolitan Chicago, a pre-existing HF history was not associated with increased risk of 60-day mortality. However, those with HF were found to be at higher risk for a complicated course including myocardial injury, as well as need for structured hospital follow up to avoid hospital readmission.

Funding

The authors received no financial support for the research, authorship, or publication of this manuscript.

Declaration of competing interest

None.

Appendix A. Supplementary data

Supplementary data to this article can be found online at <https://doi.org/10.1016/j.ahjo.2021.100022>.

References

- [1] J. Yang, Y. Zheng, X. Gou, K. Pu, Z. Chen, Q. Guo, R. Ji, H. Wang, Y. Wang, Y. Zhou, Prevalence of comorbidities and its effects in coronavirus disease 2019 patients: a systematic review and meta-analysis, *Int. J. Infect. Dis.* 94 (2020) 91–95.
- [2] Johns Hopkins coronavirus resource center, Available at, <https://coronavirus.jhu.edu/>. (Accessed 1 March 2021).
- [3] J. Alvarez-García, S. Lee, A. Gupta, M. Cagliostro, A.A. Joshi, M. Rivas-Lasarte, J. Contreras, S.S. Mitter, G. LaRocca, P. Tlachi, D. Brunjes, B.S. Glicksberg, M. A. Levin, G. Nadkarni, Z. Fayad, V. Fuster, D. Mancini, A. Lala, Prognostic impact of prior heart failure in patients hospitalized with COVID-19, *J. Am. Coll. Cardiol.* 76 (2020) 2334–2348.
- [4] Y.Y. Zheng, Y.T. Ma, J.Y. Zhang, X. Xie, COVID-19 and the cardiovascular system, *Nat. Rev. Cardiol.* (2020) 17, <https://doi.org/10.1038/s41569-020-0360-5>.
- [5] N. Chatrath, N. Kaza, P.A. Pabari, K. Fox, J. Mayet, C. Barton, G.D. Cole, C. M. Plymen, The effect of concomitant COVID-19 infection on outcomes in patients hospitalized with heart failure, *ESC Heart Fail.* (2020), <https://doi.org/10.1002/ehf2.13059>.
- [6] J.R. Rey, J. Caro-Codón, S.O. Rosillo, Á.M. Iniesta, S. Castrejón-Castrejón, I. Marco-Clement, L. Martín-Polo, C. Merino-Argos, L. Rodríguez-Sotelo, J.M. García-Veas, L.A. Martínez-Marín, M. Martínez-Cossiani, A. Buño, L. Gonzalez-Valle, A. Herrero, J.L. López-Sendón, J.L. Merino, Heart failure in COVID-19 patients: prevalence, incidence and prognostic implications, *Eur. J. Heart Fail.* (2020), <https://doi.org/10.1002/ejhf.1990>.
- [7] E. Yonas, I. Alwi, R. Pranata, I. Huang, M.A. Lim, E.J. Gutierrez, M. Yamin, B. B. Siswanto, S.S. Virani, Effect of heart failure on the outcome of COVID-19 - a meta analysis and systematic review, *Am. J. Emerg. Med.* (2020), <https://doi.org/10.1016/j.ajem.2020.07.009>.
- [8] D. Tomasoni, R.M. Inciardi, C.M. Lombardi, C. Tedino, P. Agostoni, P. Ameri, L. Barbieri, A. Bellasi, R. Camporotondo, C. Canale, V. Carubelli, S. Carugo, F. Catagnano, L.A. Dalla Vecchia, G.B. Danzi, M. di Pasquale, M. Gaudenzi, S. Giovinazzo, M. Gnechi, A. Iorio, M.T. la Rovere, S. Leonardi, G. Maccagni, M. Mapelli, D. Margonato, M. Merlo, L. Monzo, A. Mortara, V. Nuzzi, M. Piepoli, I. Porto, A. Pozzi, F. Sarullo, G. Sinagra, M. Volterrani, G. Zaccone, M. Guazzi, M. Senni, M. Metra, Impact of heart failure on the clinical course and outcomes of patients hospitalized for COVID-19. Results of the cardio-COVID-Italy multicentre study, *Eur. J. Heart Fail.* 22 (2020) 2238–2247.
- [9] A.S. Bhatt, K.S. Jering, M. Vaduganathan, B.L. Claggett, J.W. Cunningham, N. Rosenthal, J. Signorovitch, J.J. Thune, O. Vardeny, S.D. Solomon, Clinical outcomes in patients with heart failure hospitalized with COVID-19, *JACC Heart Fail.* 9 (2021) 65–73.
- [10] E.M. DeFilippis, N. Reza, E. Donald, M.M. Givertz, J. Lindenfeld, M. Jessup, Considerations for heart failure care during the COVID-19 pandemic, *JACC Heart Fail.* 8 (2020) 681–691.
- [11] E.P. Martens, W.R. Pestman, A. de Boer, S. v Belitsers, O.H. Klungel, Systematic differences in treatment effect estimates between propensity score methods and logistic regression, *Int. J. Epidemiol.* 37 (2008) 1142–1147.
- [12] J. Amoah, E.A. Stuart, S.E. Cosgrove, A.D. Harris, J.H. Han, E. Lautenbach, P. D. Tamma, Comparing propensity score methods versus traditional regression analysis for the evaluation of observational data: a case study evaluating the treatment of gram-negative bloodstream infections, *Clin. Infect. Dis.* 71 (2020) e497–e505.
- [13] P.C. Austin, Optimal caliper widths for propensity-score matching when estimating differences in means and differences in proportions in observational studies, *Pharm. Stat.* 10 (2011) 150–161.
- [14] E.J. Williamson, A.J. Walker, K. Bhaskaran, S. Bacon, C. Bates, C.E. Morton, H. J. Curtis, A. Mehrkar, D. Evans, P. Inglesby, J. Cockburn, H.I. McDonald, B. MacKenna, L. Tomlinson, I.J. Douglas, C.T. Rentsch, R. Mathur, A.Y.S. Wong, R. Grieve, D. Harrison, H. Forbes, A. Schultze, R. Croker, J. Parry, F. Hester, S. Harper, R. Perera, S.J.W. Evans, L. Smeeth, B. Goldacre, Factors associated with COVID-19-related death using OpenSAFELY, *Nature.* 584 (2020) 430–436.
- [15] A.M. Lavery, L.E. Preston, J.Y. Ko, J.R. Chevinsky, C.L. DeSisto, A.F. Pennington, L. Kompaniyets, S.D. Datta, E.S. Click, T. Golden, A.B. Goodman, W.R. mac Kenzie, T.K. Boehmer, A. v Gundlapalli, Characteristics of hospitalized COVID-19 patients discharged and experiencing same-hospital readmission - United States, March-August 2020, *MMWR Morb. Mortal. Wkly Rep.* 69 (2020) 1695–1699.
- [16] W.-H. Jeon, J.Y. Seon, S.-Y. Park, I.-H. Oh, Analysis of risk factors on readmission cases of COVID-19 in the Republic of Korea: using nationwide health claims data, *Int. J. Environ. Res. Public Health* (2020) 17, <https://doi.org/10.3390/ijerph17165844>.
- [17] S. Somani, F. Richter, V. Fuster, J. de Freitas, N. Naik, K. Sigel, E.P. Boettinger, M. A. Levin, Z. Fayad, A.C. Just, A. Charney, S. Zhao, B.S. Glicksberg, A. Lala, G. Nadkarni, Characterization of patients who return to hospital following discharge from hospitalization for COVID-19, medRxiv: The Preprint Server for Health Sciences (2020), <https://doi.org/10.1101/2020.05.17.20104604>.
- [18] J.P. Lang, X. Wang, F.A. Moura, H.K. Siddiqi, D.A. Morrow, E.A. Bohula, A current review of COVID-19 for the cardiovascular specialist, *Am. Heart J.* 226 (2020) 29–44.
- [19] C. Bavishi, R.O. Bonow, V. Trivedi, J.D. Abbott, F.H. Messerli, D.L. Bhatt, Special article - acute myocardial injury in patients hospitalized with COVID-19 infection: a review, *Prog. Cardiovasc. Dis.* 63 (2020) 682–689.
- [20] G.M. Felker, R.J. Mentz, J.R. Teerlink, A.A. Voors, P.S. Pang, P. Ponikowski, B. H. Greenberg, G. Filippatos, B.A. Davison, G. Cotter, M.F. Prescott, T.A. Hua, S. Lopez-Pintado, T. Severin, M. Metra, Serial high sensitivity cardiac troponin T measurement in acute heart failure: insights from the RELAX-AHF study, *Eur. J. Heart Fail.* 17 (2015) 1262–1270.
- [21] R.S. Chamberlain, J. Sond, K. Mahendraraj, C.S. Lau, B.L. Siracuse, Determining 30-day readmission risk for heart failure patients: the Readmission After Heart Failure scale, *Int. J. Gen. Med.* 11 (2018) 127–141.
- [22] A.R. Maroko, D. Nash, B.T. Pavilonis, COVID-19 and inequity: a comparative spatial analysis of New York City and Chicago hot spots, *J. Urban Health: Bull. New York Acad. Med.* 97 (2020) 461–470.
- [23] Our world in data, data explorer, Available at, <https://ourworldindata.org/>. (Accessed 21 February 2021).
- [24] N. McCormick, D. Lacaillie, V. Bhole, J.A. Avina-Zubieta, Validity of heart failure diagnoses in administrative databases: a systematic review and meta-analysis, *PLoS One* 9 (2014), e104519.
- [25] K.E. Hanson, A.M. Caliendo, C.A. Arias, M.K. Hayden, J.A. Englund, M.J. Lee, M. Loeb, R. Patel, A. el Alayli, O. Altayar, P. Patel, Y. Falck-Ytter, V. Lavergne, R. L. Morgan, M.H. Murad, S. Sultan, A. Bhimraj, R.A. Mustafa, The Infectious Diseases Society of America guidelines on the diagnosis of COVID-19: molecular diagnostic testing, *Clin. Infect. Dis.: Off. Publ. Infect. Dis. Soc. Am.* (2021), <https://doi.org/10.1093/cid/ciab048>.