



## RESEARCH ARTICLE

# Binding of HIV-1 virions to $\alpha_4\beta_7$ expressing cells and impact of antagonizing $\alpha_4\beta_7$ on HIV-1 infection of primary CD4<sup>+</sup> T cells

Chang Li<sup>1,2</sup>, Wei Jin<sup>1,2</sup>, Tao Du<sup>1</sup>, Biao Wu<sup>3</sup>, Yalan Liu<sup>1</sup>, Robin J Shattock<sup>4</sup>, Qinxue Hu<sup>1,5</sup>✉

1. State Key Laboratory of Virology, Wuhan Institute of Virology, Chinese Academy of Sciences, Wuhan 430071, China

2. University of Chinese Academy of Sciences, Beijing 100049, China

3. Department of General Surgery, Wuhan No.1 Hospital, Wuhan 430022, China

4. Section of Infectious Diseases, Faculty of Medicine, Imperial College London, St. Mary's Campus, London W21PG, UK

5. Institute for Infection and Immunity, St George's University of London, London SW170RE, UK

**HIV-1 envelope glycoprotein is reported to interact with  $\alpha_4\beta_7$ , an integrin mediating the homing of lymphocytes to gut-associated lymphoid tissue, but the significance of  $\alpha_4\beta_7$  in HIV-1 infection remains controversial. Here, using HIV-1 strain BaL, the gp120 of which was previously shown to be capable of interacting with  $\alpha_4\beta_7$ , we demonstrated that  $\alpha_4\beta_7$  can mediate the binding of whole HIV-1 virions to  $\alpha_4\beta_7$ -expressing transfectants. We further constructed a cell line stably expressing  $\alpha_4\beta_7$  and confirmed the  $\alpha_4\beta_7$ -mediated HIV-1 binding. In primary lymphocytes with activated  $\alpha_4\beta_7$  expression, we also observed significant virus binding which can be inhibited by an anti- $\alpha_4\beta_7$  antibody. Moreover, we investigated the impact of antagonizing  $\alpha_4\beta_7$  on HIV-1 infection of primary CD4<sup>+</sup> T cells. In  $\alpha_4\beta_7$ -activated CD4<sup>+</sup> T cells, both anti- $\alpha_4\beta_7$  antibodies and introduction of short-hairpin RNAs specifically targeting  $\alpha_4\beta_7$  resulted in a decreased HIV-1 infection. Our findings indicate that  $\alpha_4\beta_7$  may serve as an attachment factor at least for some HIV-1 strains. The established approach provides a promising means for the investigation of other viral strains to understand the potential roles of  $\alpha_4\beta_7$  in HIV-1 infection.**

**KEYWORDS** HIV-1; integrin  $\alpha_4\beta_7$ ; binding; infection; RNA interference; primary CD4<sup>+</sup> T cells

## INTRODUCTION

The predominant route of HIV-1 transmission is via sexual intercourse. During sexual transmission, HIV-1 viral particles or virus-infected cells have to overcome a series of obstacles to establish a successful infection including: mucus; the integrity of the genital or rectal epithelial barriers; host innate defense mechanisms; and the sparsity, activation state and susceptibility of mucosal CD4<sup>+</sup> target cells (Borrow P, et al., 2010; Derdeyn C A,

et al., 2004; Keele B F, et al., 2008; Miller C J, et al., 2005; Temchura V, et al., 2014; Tsai L, et al., 2014; Zhang Z Q, et al., 2004). These obstacles collectively result in a relatively low transmission rate per exposure (Boily M C, et al., 2009; Wawer M J, et al., 2005). However, potential selective advantages acquired by HIV-1, such as enhanced binding to specific cell subtypes, might significantly increase the chances of a successful transmission event.

Recent studies indicate that HIV-1 envelope glycoprotein (Env) gp120 is capable of interacting with integrin  $\alpha_4\beta_7$  to potentially increase viral infection (Arthos J, et al., 2008; Cicala C, et al., 2009; Darc M, et al., 2011; Li H, et al., 2011; Nawaz F, et al., 2011; Richardson S I, et al., 2013; Tjomsland V, et al., 2013).  $\alpha_4\beta_7$  is expressed on lymphoid cells and mediates cell homing to gut-as-

Received: 21 October 2014, Accepted: 21 November 2014  
Published online: 10 December 2014

✉ Correspondence:

Phone: +86-27-87199992, Fax: +86-27-87199992,

Email: qhu@wh.iov.cn

sociated lymphoid tissue (GALT), the dominant site of CD4<sup>+</sup> T cell depletion shortly after HIV-1 acquisition and local propagation (Berlin C, et al., 1993; Mehandru S, et al., 2004; Sattentau Q, 2008; Veazey R S, et al., 1998). Lymphocytes expressing activated  $\alpha_4\beta_7$  may be preferentially targeted by HIV-1 in GALT, facilitating the swift and profound gut pathogenesis of HIV/SIV infection (Mavigner M, et al., 2011; Wang X, et al., 2009). The close association of  $\alpha_4\beta_7$  with primary mucosal portals of HIV-1 infection, specifically genital and rectal mucosa, suggests that  $\alpha_4\beta_7$  interaction of viral gp120 may play a role in HIV-1 acquisition and establishment of a successful infection (Cicala C, et al., 2009; Haase A T, 2010; Martinelli E, et al., 2013; McKinnon L R, et al., 2011). However, the *bona fide* contribution of  $\alpha_4\beta_7$  in HIV-1 infection has not been fully clarified. It is shown that a number of gp120s derived from different HIV-1 strains are capable of interacting with  $\alpha_4\beta_7$  (Arthos J, et al., 2008; Li H, et al., 2011; Nawaz F, et al., 2011). The majority of previous studies investigating the binding capability of HIV-1 to  $\alpha_4\beta_7$  mainly used the recombinant monomeric gp120s. Given that the structure of HIV-1 envelope protein is complex and the monomeric gp120 can be distinct significantly from the native trimeric gp120s anchored in the membrane of HIV-1 virion (Harris A, et al., 2011; Wyatt R, et al., 1998), whether whole HIV-1 virions also possess the  $\alpha_4\beta_7$  reactivity is a topic of importance and remains to be further elucidated.

In the current study, after confirming the binding of HIV-1 BaL to various  $\alpha_4\beta_7$ -expressing cells, we investigated the impact of antagonizing  $\alpha_4\beta_7$  on HIV-1 infection of primary CD4<sup>+</sup> T lymphocytes.

## MATERIALS AND METHODS

### Plasmids, cells, proteins and antibodies

Plasmid pNL4-3 BaL<sup>+</sup> containing the backbone of NL4-3 and the Env of BaL (referred to as BaL), TZM-bl cell line and antibody Act-1 were from NIH AIDS Research & Reference Reagent Program, Division of AIDS, NIH (Germantown, MD, USA). QT6, a fibrosarcoma cell line derived from Japanese quail, was from American Tissue Culture Collection (ATCC, Cambridge, MA, USA). Integrin expressing plasmids including human p $\alpha_4$ , p $\alpha_E$ , p $\beta_7$  and p $\beta_1$ , mouse p $\alpha_4$  and p $\beta_7$ , rat p $\alpha_4$  and p $\beta_7$  were amplified from cDNA subtracted from PBMCs of corresponding species using primers listed in Table 1 (Table 1) and inserted into the expression vector pcDNA3.1(+), respectively. Antibody 2B4 and mouse anti-human IgG were from R&D Systems (Minneapolis, MN, USA). HP2/1 was from AbD Serotec (Oxford, UK). RPA-T4, anti-CD3-PE, anti-CD4-FITC, anti-CD8-FITC, anti-CCR5-PE, anti-human  $\beta_7$ -PE, anti-mouse  $\beta_1$ -PE, anti-rat  $\beta_7$ -PE, anti-mouse IgG-APC and matched iso-

type control antibodies were from BD Pharmingen (San Jose, CA, USA). Leu3A, anti-human  $\beta_7$ -APC and control IgG-APC were from Biolegend (San Diego, CA, USA). Reagents for ELISA assay were from Beckman Coulter (Brea, CA, USA), with a limit of sensitivity of 30 pg/mL.

### Construction of $\alpha_4\beta_7$ expressing stable cell lines

The complete coding sequences of  $\alpha_4$  and  $\beta_7$  were amplified from constructed p $\alpha_4$  and p $\beta_7$  and subcloned into the lentiviral vectors pLJM1 (Addgene, Cambridge, MA, USA, with a substitution of CMV-EGFP into CMV-2a-RFP) and pLenti6.3/V5-DEST (Invitrogen, Grand Island, NY, USA, with an insertion of a MCS-IRES2-EGFP sequence after the CMV promoter), respectively. The constructed pLJM1-CMV- $\alpha_4$ -2a-RFP or pLenti6.3-CMV- $\beta_7$ -IRES2-EGFP/V5-DEST vector was co-transfected with psPAX2 and pMG2.G (Addgene, Cambridge, MA, USA) into 293T cells to produce lentiviruses which were subsequently used to infect CHO cells at optimal multiplicity of infection. Cells with high and stable  $\alpha_4\beta_7$  expression were selected by culture in the presence of antibiotics puromycin and blasticidine, and further purified by limited dilution (Wurm F M, 2004).

### Preparation of PBMCs and T cell subsets

All human blood samples were collected under protocols approved by the Local Research Ethics Committee. PBMCs were isolated from single buffy coats, and stimulated with 20 U/mL interleukin-2 (R&D Systems, Minneapolis, MN, USA) and 1  $\mu$ g/mL phytohaemagglutinin (Sigma-Aldrich, St. Louis, MO, USA) for 3 days. For  $\alpha_4\beta_7$  activation, 10 nmol/L retinoic acid (RA, Sigma-Aldrich, St. Louis, MO, USA) was added to the medium at the beginning of the 3-day culture, followed by an additional 4-day culture in the presence of IL-2 and RA. CD4<sup>+</sup> T cells were prepared from PBMCs by negative selection and cultured as PBMCs (Miltenyi, Bergisch Gladbach, NRW, Germany). CD8<sup>+</sup> T cells with high or low/negative  $\alpha_4\beta_7$  expression were sorted from activated PBMCs by gating on the CD8<sup>+</sup> lymphocytes with corresponding  $\beta_7$  expression.

### Virus binding

For cell transfectants and CHO- $\alpha_4\beta_7$  cell lines, cells were detached by trypsin and recovered at 37°C for 2 hours. For CD8<sup>+</sup> T cells, after sorting by flow cytometry, cells were cultured at 37°C for 2 days prior to binding assay. For each condition, 1  $\times$  10<sup>6</sup> cell-line cells or 5  $\times$  10<sup>5</sup> primary cells were incubated with 100 ng p24 of virus at 37°C for 2 hours (for transfectants) or 1 hour (for primary cells) with end-to-end rotation. Inhibitors were present as indicated and pre-incubated with the cells for 1 hour (for transfectants) or 30 min (for primary cells). The incubation medium was supplemented DMEM with the



addition of 1 mmol/L  $\text{MnCl}_2$ . After incubation, the cells were washed 3 times using HEPES buffer supplemented with 1 mmol/L  $\text{MnCl}_2$  and 100  $\mu\text{mol/L}$   $\text{CaCl}_2$  to remove unbound virus, lysed using 1% Triton X-100, then subjected to p24 antigen quantification.

### RNA interference

Short-hairpin RNA interference was carried out as described previously (Qin X F, et al., 2003). In brief, shRNA oligo sequences targeting human integrin  $\alpha_4$  were downloaded from the RNAi Consortium (<http://www.ncbi.nlm.nih.gov/projects/genome/probe/doc/ProjTRC.shtml>), analyzed for suitability and potential efficacy according to general guidelines for RNAi design (Birmingham A, et al., 2007; Qin X F, et al., 2003; Tiscornia G, et al., 2003), synthesized, annealed and inserted into the lentiviral vector pLentiLox3.7 (referred to as pLL3.7) (Addgene, Cambridge, MA, USA). Scrambled shRNA and shRNA sequence targeting CCR5 were from Addgene or synthesized as described (Qin X F, et al., 2003) (Table 1), and subsequently inserted into the lentiviral vector pLL3.7. The constructed pLL3.7-shRNA or empty vector were co-transfected with psPAX2 and pMG2.G into 293T cells to produce lentivirus which were then titrated and used to transduce RA-treated  $\text{CD4}^+$  T cells. 4-6 days post-transduction, the positively transduced cells ( $\text{GFP}^+$ ) were analyzed for gene expression by FCM and sorted for downstream virus infection.

### HIV-1 production, titration and infection

Pseudotyped reporter viruses were prepared as described (Hu Q, et al., 2005). In brief, 293T cells were co-transfected with plasmids expressing HIV-1 Env or VSV-G and pNL4-3.Luc.RE<sup>-</sup> using Lipofectamine 2000 (Invitrogen, Grand Island, NY, USA) according to the manufacturer's instructions. Infectious HIV-1 was produced by transfecting plasmid BaL into 293T cells using Lipofectamine 2000 according to the manufacturer's instructions. PBMC-originated viruses were produced by infection of PBMCs with 293T-derived viruses. All viral stocks were titrated by p24 ELISA.

For virus infection assays,  $2 \times 10^5$  PBMCs or  $\text{CD4}^+$  T cells were infected with 2 ng p24 of virus followed by extensive washes to remove unbound virus. Cells were cultured in supplemented RPMI-1640 for 12 days. Supernatants were collected every 3 days post-infection, lysed and then stored at  $-80^\circ\text{C}$  until detection for p24 antigen.

### Flow cytometry

For expression assays,  $5 \times 10^6$  cells were used for each condition. In brief, cells were harvested, counted and washed once using PBS with 3% FBS. For integrin transfectants and  $\alpha_4\beta_7$ -expressing cell lines, cells were washed

using HEPES buffer supplemented with 1 mmol/L  $\text{MnCl}_2$  and 100  $\mu\text{mol/L}$   $\text{CaCl}_2$ . Cells were stained with indicated antibody for 30 minutes on ice, followed by staining with secondary antibody for another 30 minutes in some cases. The stained cells were washed twice, fixed with 500  $\mu\text{L}$  of 1% paraformaldehyde in PBS and analyzed on a FACSAria III (BD, San Jose, CA, USA) cytometer.

For cell sorting,  $5 \times 10^7$  cells were used for each sample. Cells were stained as described above except that cells were kept in ice-cold washing buffer and immediately sorted after staining.

### Statistical analysis

Data are presented as mean  $\pm$  SD. The difference of mean value was analyzed by the two-tailed student's t test.  $p < 0.05$  was considered statistically significant.

## RESULTS

### HIV-1 binds to cell transfectants mediated by gp120- $\alpha_4\beta_7$ interaction.

HIV-1 gp120 has been reported to interact with integrin  $\alpha_4\beta_7$  expressed on primary lymphocytes and such interaction has been well studied (Arthos J, et al., 2008; Cicala C, et al., 2009; Darc M, et al., 2011; Jelacic K, et al., 2013; Li H, et al., 2011). However, whether gp120- $\alpha_4\beta_7$  interaction mediates the binding of HIV-1 virions to target cells remains to be further clarified (Arthos J, et al., 2008; Etemad B, et al., 2012). We initially performed experiments to examine whether expression of  $\alpha_4\beta_7$  alone could mediate HIV-1 binding. We first sought to confirm HIV-1 binding to  $\alpha_4\beta_7$  transfectants by cloning and co-expressing human  $\alpha_4$  and  $\beta_7$  genes on 293T cells (Figure 1A). HIV-1 BaL bound to 293T cells transfected with  $\alpha_4\beta_7$  to a significantly higher level than those transfected with pcDNA3.1. The  $\alpha_4\beta_7$ -mediated virus binding was dependent upon its level of expression (Figure 1A). These results were confirmed using a second transduced cell line QT6, derived from Japanese quail (Figure 1B). In agreement with previous reports (Arthos J, et al., 2008; Nawaz F, et al., 2011), our data together shown that exogenously expressed  $\alpha_4\beta_7$  can mediate HIV-1 binding to  $\alpha_4\beta_7$  expressing cells.

$\alpha_4\beta_7$  is a heterodimer comprised of an  $\alpha$  and a  $\beta$  subunits. It belongs to the integrin family which includes a large number of members. To date, 18  $\alpha$  and 8  $\beta$  subunits and 24 different integrin heterodimers have been reported (Abram C L, et al., 2009; Yu Y, et al., 2012). Thus, we assessed whether  $\alpha_4\beta_7$  is unique amongst integrins with respect to HIV-1 binding. We cloned two additional subunits  $\alpha_E$  and  $\beta_1$ , which can form  $\alpha_E\beta_7$  and  $\alpha_4\beta_1$  heterodimers *in vivo*, respectively. By transfection of 293T cells, we found that BaL virions also bound to  $\alpha_4\beta_1$  transfectants, albeit to a lesser extent, whereas no significant

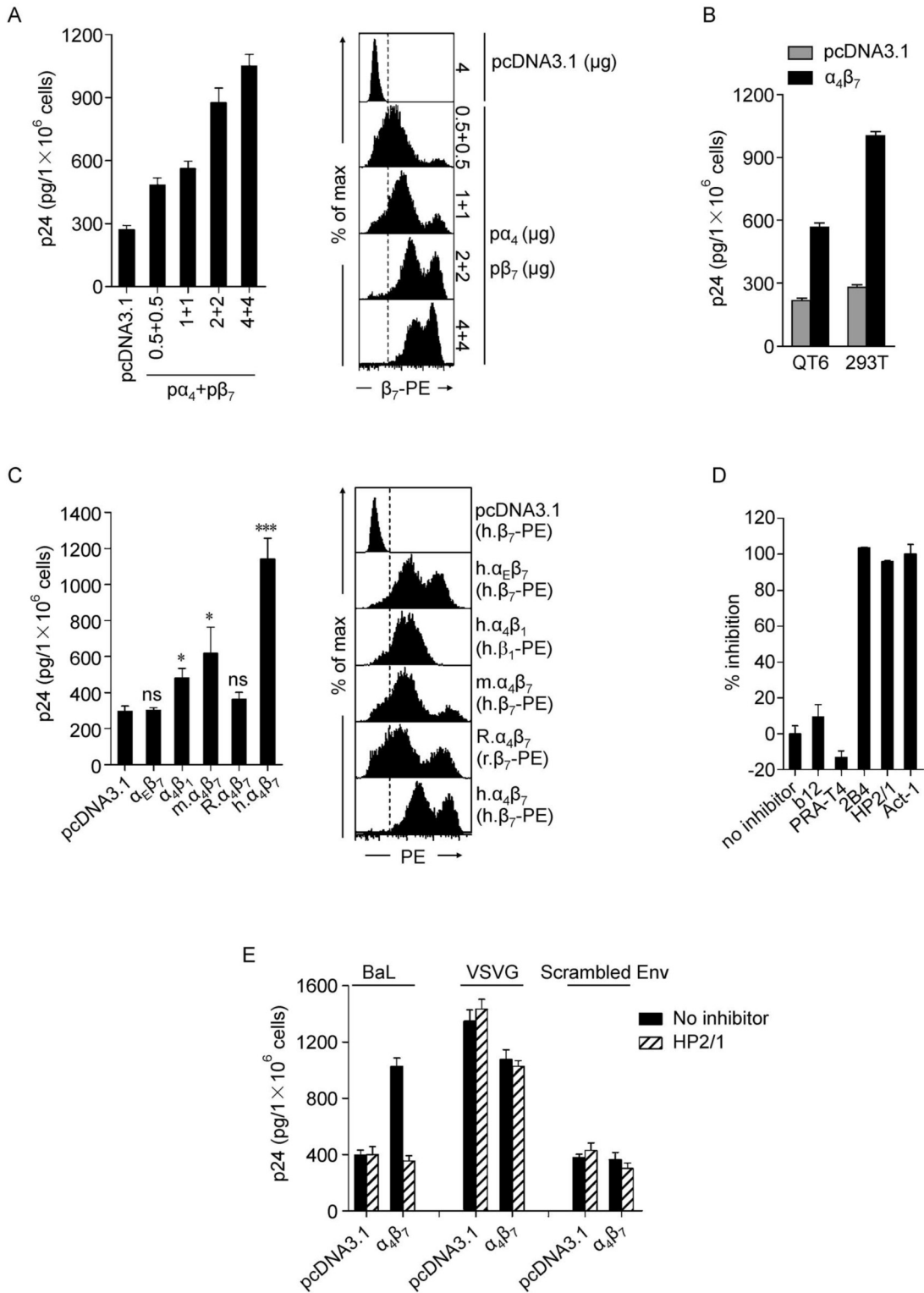


Figure 1. Binding of HIV-1 to cell transfectants mediated by gp120- $\alpha_4\beta_7$  interaction. A-D: 48 hours post-transfection, cells were detached and recovered at 37°C for 2 hours. For each condition,  $1 \times 10^6$  cells were incubated with 100 ng p24 of HIV-1 BaL in complete DMEM medium with the addition of 1 mmol/L MnCl<sub>2</sub> at 37°C for 2 hours with rotation, followed by extensive washes to remove unbound virus. Cells were lysed with 1% Triton X-100 and subjected to p24 measurement. Antibodies (20  $\mu$ g/mL) were present as indicated and pre-incubated with the cells for 1 hour. A: Binding of BaL to 293T cells transfected with a serial dose of p $\alpha_4$  + p $\beta_7$  or pcDNA3.1(+) control plasmid (left). The expression of  $\alpha_4\beta_7$  was labeled by anti- $\beta_7$ -PE, assayed by flow cytometry and is shown on the right. B: Binding of BaL to 293T or QT6 cells transfected with p $\alpha_4$  + p $\beta_7$  or pcDNA3.1(+). C: Binding of BaL to 293T cells transfected with plasmids expressing human  $\alpha_E\beta_7$ , human  $\alpha_4\beta_1$ , mouse  $\alpha_4\beta_7$ , rat  $\alpha_4\beta_7$ , human  $\alpha_4\beta_7$ , or pcDNA3.1(+) (left). The expression of the integrins was assayed by flow cytometry and is shown on the right. m, mouse; R, rat; h, human. D: Binding of BaL to 293T  $\alpha_4\beta_7$ -transfectants in the presence of antibodies to gp120 CD4 binding site (b12), CD4 (RPA-T4),  $\alpha_4$  (2B4 or HP2/1) or  $\alpha_4\beta_7$  (Act-1). Results are shown as % inhibition, with that in the absence of inhibitors set to 0%. E: Binding of HIV-1 pseudotyped with BaL, VSV-G or frameshift-mutated (scrambled) Env to 293T cells transfected with p $\alpha_4$  + p $\beta_7$  or pcDNA3.1, in the presence or absence of anti- $\alpha_4$  antibody HP2/1. All inhibitors were presented at 20  $\mu$ g/mL. Data shown are representative of at least three independent experiments with the bar graphs expressed as mean  $\pm$  SD. For virus binding assay, each condition was performed in triplicate. \* $p < 0.05$  and \*\*\* $p < 0.001$ , compared to virus binding using cells transfected with pcDNA3.1. ns, not significant.

binding was observed on  $\alpha_E\beta_7$  transfectants (Figure 1C). To further identify whether  $\alpha_4\beta_7$  mediated virus binding was species specific, we cloned mouse and rat  $\alpha_4\beta_7$  and observed that BaL also moderately bound to mouse  $\alpha_4\beta_7$ , but not to rat  $\alpha_4\beta_7$  (Figure 1C). Comparative integrin expression was determined by flow cytometry (FCM) (Figure 1C). The moderate binding to human  $\alpha_4\beta_1$  was likely due to the shared subunit and structure similarity between  $\alpha_4\beta_7$  and  $\alpha_4\beta_1$  (Yu Y, et al., 2012), while binding to the murine ortholog reflects conserved sequence between human and mouse  $\alpha_4\beta_7$  (Qi J, et al., 2012; Tidswell M, et al., 1997).

Subsequently, we measured the effect of inhibitors on virus binding. Results showed that monoclonal antibodies (mAbs, 20  $\mu$ g/mL) targeting  $\alpha_4$  (2B4, HP2/1) or  $\alpha_4\beta_7$  (Act-1) almost completely blocked virus binding to  $\alpha_4\beta_7$  transfectants, in agreement with a previous report that anti- $\alpha_4\beta_7$  inhibitors abolished gp120- $\alpha_4\beta_7$  interaction (Arthos J, et al., 2008). In contrast, no blocking effect was observed in mock control or in the presence of mAb to CD4 (RPA-T4) or gp120 CD4-binding site (b12) (Figure 1D).

To further explore the specificity of gp120- $\alpha_4\beta_7$  mediated virus binding, we produced pseudotyped HIV-1 using HIV-1 BaL Env, VSV-G or frameshift-mutated Env (scrambled Env), and observed that only BaL-pseudotyped HIV-1 bound to  $\alpha_4\beta_7$  transfectants and the binding activity was significantly higher than that to pcDNA3.1 transfectants (Figure 1E). The pantropic VSV-G pseudotyped HIV-1 bound to cells regardless of  $\alpha_4\beta_7$  expression, whereas scrambled Env pseudotyped HIV-1 lost the capability of binding to  $\alpha_4\beta_7$  transfectants. In addition, only binding of BaL to  $\alpha_4\beta_7$  transfectants was blocked by HP2/1, an anti- $\alpha_4$  monoclonal antibody (Figure 1E). These results collectively indicate that the

interaction between gp120 and  $\alpha_4\beta_7$  mediates HIV-1 binding.

### HIV-1 binds to stable $\alpha_4\beta_7$ -expressing cell line and primary CD8<sup>+</sup> and CD4<sup>+</sup> T cells.

To further confirm the  $\alpha_4\beta_7$ -mediated virus binding, we constructed a CHO cell line stably expressing  $\alpha_4\beta_7$ , using lentiviruses to introduce the  $\alpha_4$  and  $\beta_7$  genes into the CHO genome. The expression of  $\alpha_4$ ,  $\beta_7$  and  $\alpha_4\beta_7$  on the constructed CHO- $\alpha_4\beta_7$  was analyzed by fluorescence microscopy and FCM (Figure 2A and 2B). Compared to the parental CHO cells, HIV-1 BaL bound to CHO- $\alpha_4\beta_7$  cells at a significantly higher level which could be blocked by HP2/1 (20  $\mu$ g/mL) (Figure 2C). These results are consistent with those obtained from 293T transfectants (Figure 1).

The above experiments were conducted using cell lines. To assess whether  $\alpha_4\beta_7$ -mediated HIV-1 binding can be reproduced in primary cells, we carried out virus binding assay using primary CD8<sup>+</sup> T cells. This cell subset has little if any CD4 expression, eliminating the interference of CD4 mediated binding. PBMCs were stimulated for  $\alpha_4\beta_7$  expression by retinoic acid (RA) (Mora J R, et al., 2003). Activated PBMCs from three different donors were subjected to sorting based on CD8 and  $\beta_7$  expression by FCM (dot plot of Figure 2D). Compared to CD8<sup>+</sup> T cells with low or negative  $\beta_7$  expression ( $\beta_7^{\text{low/-}}$ ), cells with higher  $\beta_7$  expression ( $\beta_7^{\text{hi}}$ ) mediated markedly higher level of virus binding (Figure 2D). CD4<sup>+</sup> T lymphocyte is the primary target of HIV-1 infection *in vivo*. After RA treatment, we also observed significant virus binding to primary CD4<sup>+</sup> T lymphocytes following blockade of CD4 with mAbs (2.5  $\mu$ g/mL RPA-T4 plus 2.5  $\mu$ g/mL Leu3A). This CD4 independent binding was inhibited by the HP2/1 mAb (5  $\mu$ g/mL) (Figure 2D). These results indicate that  $\alpha_4\beta_7$  expressed on primary cells is

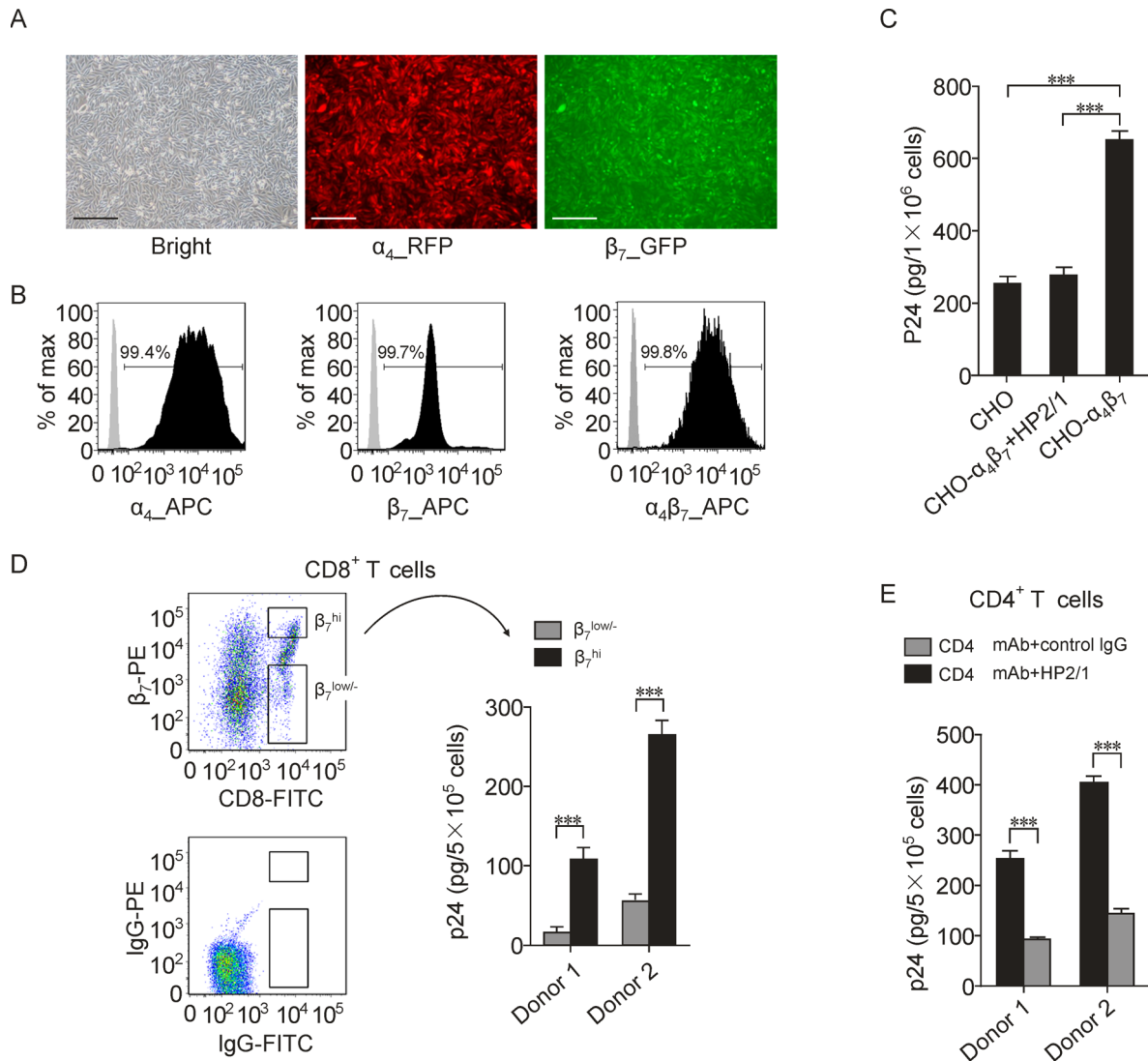


Figure 2. Binding of HIV-1 to a constructed CHO cell line stably expressing  $\alpha_4\beta_7$  and RA-treated primary CD8<sup>+</sup> and CD4<sup>+</sup> T cells. A CHO- $\alpha_4\beta_7$  cell line with stable  $\alpha_4\beta_7$  expression were constructed by transducing CHO cells with lentiviral vectors carrying the human  $\alpha_4$  and  $\beta_7$  gene, followed by selection using antibiotic resistance and further purification using limited dilution. A: Visualizing of the constructed CHO- $\alpha_4\beta_7$  cells under a fluorescence microscopy. A fluorescent protein RFP or EGFP tag was bicistronically expressed with the  $\alpha_4$  or  $\beta_7$  subunit, respectively. The black scale bar represents the length 100  $\mu$ m. B: Measurement of the  $\alpha_4$ ,  $\beta_7$  and  $\alpha_4\beta_7$  expression on CHO- $\alpha_4\beta_7$  cells by FCM. The cells were correspondingly stained with anti- $\alpha_4$  (2B4) and Alexa Fluor 647-conjugated goat-anti-mouse IgG, or anti- $\beta_7$ -APC, or Act-1 and allophycocyanin-conjugated rabbit anti-mouse IgG, followed by analysis using FCM. C: Binding of HIV-1 BaL to CHO cell lines with or without stable  $\alpha_4\beta_7$  expression, in the presence or absence of anti- $\alpha_4$  antibody HP2/1 (20  $\mu$ g/mL). D: Binding of HIV-1 BaL to primary CD8<sup>+</sup> T cells with high ( $\beta_7^{hi}$ ) or low or negative ( $\beta_7^{low/-}$ )  $\alpha_4\beta_7$  expression. The cells were obtained by sorting of retinoic acid-treated PBMCs based on CD8 and  $\beta_7$  expression. The gating strategy is shown by the dot plots. E: Binding of HIV-1 BaL to primary CD4<sup>+</sup> T cells. The cells were separated from freshly-isolated PBMCs by negative magnetic selection and cultured for  $\alpha_4\beta_7$  activation as PBMCs. The binding experiment was conducted as in described in the legend of figure 1 except that  $5 \times 10^5$  cells were used for each condition of primary cells. For CD4<sup>+</sup> T cells, the cells were incubated with 2.5  $\mu$ g/mL RPA-T4 plus 2.5  $\mu$ g/mL Leu3A at 37°C for 30 minutes to block CD4 receptor and in the presence of HP2/1 (5  $\mu$ g/mL) to block  $\alpha_4\beta_7$  or IgG as a negative control. The bar graphs are expressed as mean  $\pm$  SD, with each condition performed in triplicate. For C, one out of three independent experiments is shown. For D and E, the experiments are performed using T cells derived from two different donors. \*\*\* $p < 0.001$ .

capable of mediating virus binding.

### Blockade or knockdown of $\alpha_4\beta_7$ expression on CD4<sup>+</sup> T cells decreases HIV-1 infection

Because HIV-1 is capable of binding to primary T cells by interacting with  $\alpha_4\beta_7$ , we wonder if targeting this integrin could circumvent HIV-1 infection of CD4<sup>+</sup> T cells which serve as the main target of HIV-1 infection. Initially, we conducted experiments using anti- $\alpha_4\beta_7$  antibodies.  $\alpha_4\beta_7$  expression on CD4<sup>+</sup> T cells treated with or without RA was analyzed by FCM (Figure 3A). HIV-1 BaL infection of RA-treated CD4<sup>+</sup> T cells was partially inhibited by blocking  $\alpha_4\beta_7$  with HP2/1 or Act-1 (5  $\mu$ g/

mL), while blockade of CD4 with RPA-T4 (5  $\mu$ g/mL) almost completely inhibited virus infection (Figure 3B). However, anti- $\alpha_4\beta_7$  antibodies could induce cell aggregation (Parrish N F, et al., 2012), with Act-1 being more potent than HP2/1 and the aggregates became remarkably larger when cells were cultured in the presence of higher concentrations of stimulators (i.e., IL-2 plus PHA or OKT3). The phenomenon of anti-integrin induced cell aggregation has been used as a common approach to investigate integrin function as reported by several studies (Andrew D P, et al., 1994; Ruegg C, et al., 1992; Zeller Y, et al., 2001). The formation of cell aggregates increases cell-cell contact, which in turn enhances viral infection

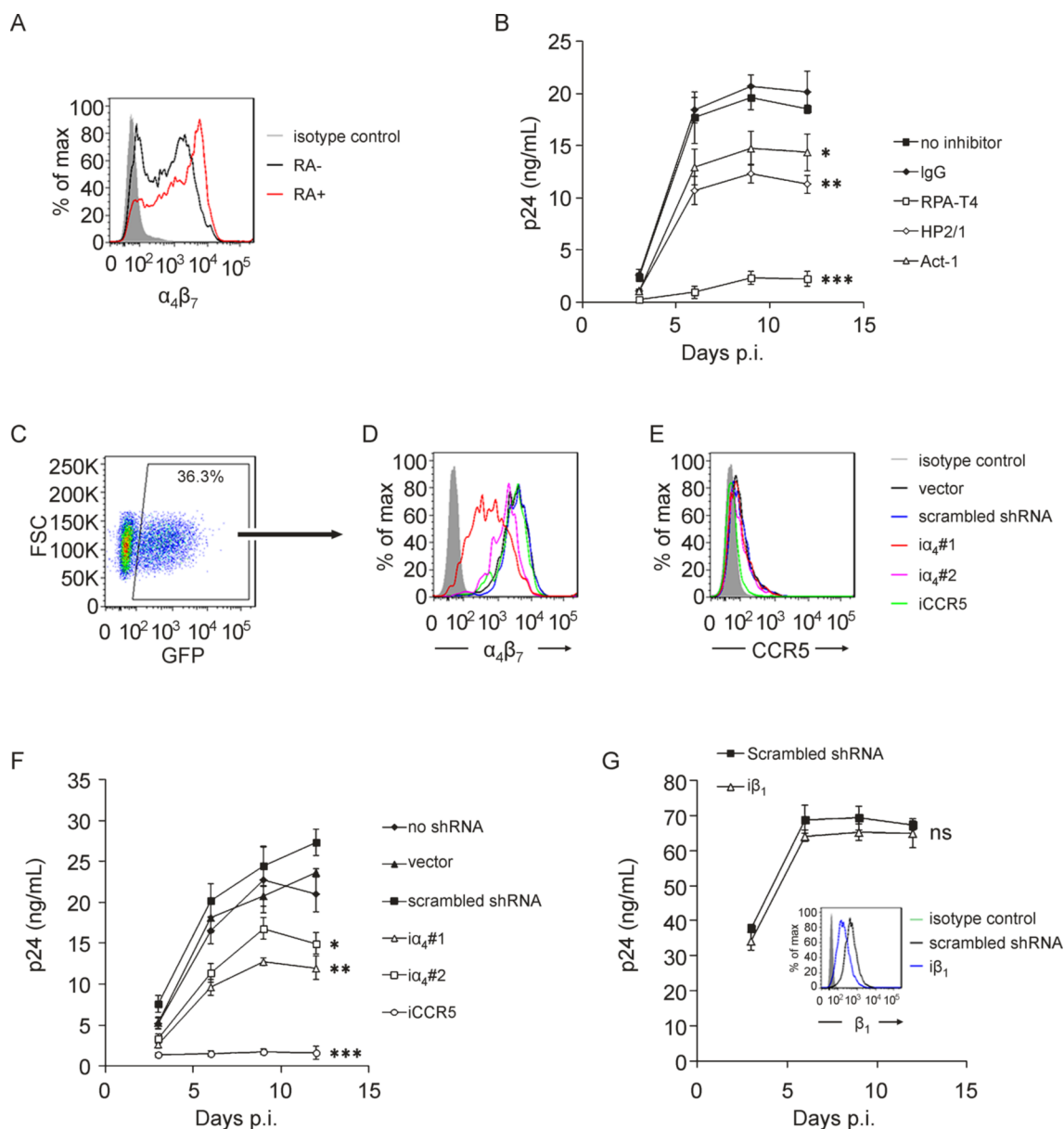


Figure 3. Binding of HIV-1 to a constructed CHO cell line stably expressing  $\alpha_4\beta_7$  and RA-treated primary CD8<sup>+</sup> and CD4<sup>+</sup> T cells. A CHO- $\alpha_4\beta_7$  cell line with stable  $\alpha_4\beta_7$  expression were constructed by transducing CHO cells with lentiviral vectors carrying the human  $\alpha_4$  and  $\beta_7$  gene, followed by selection using antibiotic resistance and further purification using limited dilution. A: Visualizing of the constructed CHO- $\alpha_4\beta_7$  cells under a fluorescence microscopy. A fluorescent protein RFP or EGFP tag was bicistronically expressed with the  $\alpha_4$  or  $\beta_7$  subunit, respectively. B: Measurement of the  $\alpha_4$ ,  $\beta_7$  and  $\alpha_4\beta_7$  expression on CHO- $\alpha_4\beta_7$  cells by FCM. The cells were correspondingly stained with anti- $\alpha_4$  (2B4) and Alexa Fluor 647-conjugated goat-anti-mouse IgG, or anti- $\beta_7$ -APC, or Act-1 and allophycocyanin-conjugated rabbit anti-mouse IgG, followed by analysis using FCM. C: Binding of HIV-1 BaL to CHO cell lines with or without stable  $\alpha_4\beta_7$  expression, in the presence or absence of anti- $\alpha_4$  antibody HP2/1 (20  $\mu\text{g}/\text{mL}$ ). D: Binding of HIV-1 BaL to primary CD8<sup>+</sup> T cells with high ( $\beta_7^{\text{hi}}$ ) or low or negative ( $\beta_7^{\text{low/-}}$ )  $\alpha_4\beta_7$  expression. The cells were obtained by sorting of retinoic acid-treated PBMCs based on CD8 and  $\beta_7$  expression. The gating strategy is shown by the dot plots. E: Binding of HIV-1 BaL to primary CD4<sup>+</sup> T cells. The cells were separated from freshly-isolated PBMCs by negative magnetic selection and cultured for  $\alpha_4\beta_7$  activation as PBMCs. The binding experiment was conducted as in described in the legend of figure 1 except that  $5 \times 10^5$  cells were used for each condition of primary cells. For CD4<sup>+</sup> T cells, the cells were incubated with 2.5  $\mu\text{g}/\text{mL}$  RPA-T4 plus 2.5  $\mu\text{g}/\text{mL}$  Leu3A at 37°C for 30 minutes to block CD4 receptor and in the presence of HP2/1 (5  $\mu\text{g}/\text{mL}$ ) to block  $\alpha_4\beta_7$  or IgG as a negative control. The bar graphs are expressed as mean  $\pm$  SD, with each condition performed in triplicate. For C, one out of three independent experiments is shown. For D and E, the experiments are performed using T cells derived from two different donors. \*\*\* $p < 0.001$ .

(Alvarez R A, et al., 2011; Dale B M, et al., 2013; Liao Z, et al., 2000). This represents an important confounder and suggests that antibody engagement of  $\alpha_4\beta_7$  is not an appropriate approach to determine the significance of  $\alpha_4\beta_7$  in HIV-1 infection of primary lymphocytes (Parrish N F, et al., 2012).

We therefore chose an alternative method, short-hairpin RNA (shRNA) mediated interference, to investigate if disturbance of HIV-1- $\alpha_4\beta_7$  interaction affects HIV-1 infection. A panel of shRNAs were designed and constructed. The sequences of two  $\alpha_4$  shRNA candidates, a reported shRNA sequence targeting HIV-1 coreceptor CCR5 (iCCR5) (Qin X F, et al., 2003) and a non-targeting (scrambled) shRNA are shown in Table 1. The expression levels of  $\alpha_4\beta_7$  and CCR5 on positively transduced cells (GFP<sup>+</sup>, Figure 3C) were monitored at various time points post transduction (p.t.). The knock-down effects of two  $\alpha_4$ s and the iCCR5 at 4 days p.t. (Figure 3E and 3F) remained constant up to 15 days p.t. (data not shown), consistent with the characteristics of shRNA-mediated interference.  $\alpha_4$  #1 and #2 knocked down  $\alpha_4\beta_7$  expression with different efficiency without affecting CCR5 expression (Figure 3D and 3E), indicating that no significant off-target effect was produced. iCCR5 specifically down-regulated CCR5 expression to barely detectable levels (Figure 3E). Lentivirus infection did not cause evident damage to cell viability as measured by trypan blue staining.

The positively transduced GFP<sup>+</sup> cells were sorted for HIV-1 infection. Knock-down of  $\alpha_4\beta_7$  on CD4<sup>+</sup> T cells by both  $\alpha_4$  #1 and #2 significantly reduced BaL infection (Figure 3F). Various efficacies between  $\alpha_4$  #1 and #2 in knock-down  $\alpha_4\beta_7$  expression corresponded to an associ-

ated reduction in viral infection. Knock-down of CCR5 abrogated HIV-1 infection (Qin X F, et al., 2003), while viral infection was not significantly affected in groups transduced with scrambled shRNA or vector alone, when compared to groups without lentiviral transduction (sorted based on FSC and SSC parameters) (Figure 3F). Additionally, because integrin  $\alpha_4\beta_1$ , another member of integrin family, was observed to be capable of mediating low level of virus binding (Figure 1C), we determined whether interference of this integrin also affected HIV-1 infection. We found that although introduction of  $\beta_1$ -specific shRNA resulted in a notable decrease of  $\beta_1$  expression (the inset of Figure 3G), virus infection of CD4<sup>+</sup> T cells was not significantly affected (Figure 3G). Collectively, the above results suggest that both blockade and knock-down of  $\alpha_4\beta_7$  expression can decrease HIV-1 BaL infection.

## DISCUSSION

The significance of  $\alpha_4\beta_7$  in HIV-1 infection remains controversial. In particular, important concerns have been raised by recent studies regarding whether the ability of some gp120 proteins to engage  $\alpha_4\beta_7$  can be recapitulated by HIV-1 virions (Parrish N F, et al., 2012). Our study therefore focused on the impact of gp120- $\alpha_4\beta_7$  interaction on HIV-1 binding and infection of cell line and primary cells. We demonstrated that expression of  $\alpha_4\beta_7$  alone is enough to mediate HIV-1 binding. The binding was observed on  $\alpha_4\beta_7$ -expressing transient and stable transfectants, and primary CD8<sup>+</sup> and CD4<sup>+</sup> T cells. Of note, we showed that blockade or down-regulation of  $\alpha_4\beta_7$  expression on CD4<sup>+</sup> T cells, the primary target of HIV-1



Table 1. Primers and shRNA oligos

Name	Sequence (5' to 3')	Usage
$\alpha_4$ forward	GA <u>ACTAGCTAGCG</u> CATGGCTTGGGAAGCGAG <sup>a</sup>	PCR amplification of human
$\alpha_4$ reverse	GCTCCTGCCTCGAGTCAATTTGAAAGAAGTCCTTAATC	$\alpha_4$ from cDNA
$\beta_7$ forward	GAAACACGAATTC <u>TTGGGATCTCGGC</u> CATGGTGG	PCR amplification of human
$\beta_7$ reverse	CCTATTCTAGAGGGTAAGTGTCCCTCCCTCCTTCAGA	$\beta_7$ from cDNA
$\alpha_E$ forward	GA <u>ACTAGCTAGCG</u> CTCCAGCAAGGATGTGGCTCTTC	PCR amplification of human
$\alpha_E$ reverse	TTATGCCTCGAGTCTCCCAGTGGATAGCAGGTCC	$\alpha_E$ from cDNA
$\beta_1$ forward	AACGGAATTC <u>CAAGATGAATTTACA</u> ACCAATTTTCTG	PCR amplification of human
$\beta_1$ reverse	TAGCTCGTCTAG <u>AGTACTC</u> ATTTTCCCTCATACTTC	$\beta_1$ from cDNA
m. $\alpha_4$ forward	GACCTAGCTAGCTGTTGAATGTTCTCCACCAAGAGCG	PCR amplification of mouse
m. $\alpha_4$ reverse	TATGCCTCGAGGTCTTCAGTCATCATTGCTTTTGGCT	$\alpha_4$ from cDNA
m. $\beta_7$ forward	AATATGAATTC <u>TGCTCCTCCTCA</u> AGCACCTGCCATG	PCR amplification of mouse
m. $\beta_7$ reverse	CACCTGGTCTAG <u>AACTGTCTCCA</u> AGACAAGAATCCTAAGTC	$\beta_7$ from cDNA
r. $\alpha_4$ forward	GACCTAGCTAGCTGTTGAATGTTCCCCACCAAGAGTG	PCR amplification of rat $\alpha_4$
r. $\alpha_4$ reverse	TTACCTCGAGAGTCTTCAGTCATCATTGCTTTTGGCTGT	from cDNA
r. $\beta_7$ forward	ACCTAGCTAGCGCCATGGTGGATTCACTGTTCC	PCR amplification of rat $\beta_7$
r. $\beta_7$ reverse	TTACCTCGAGCTAAGTCAGTCAGCCTCCTGGGTCAG	from cDNA
i $\alpha_4$ #1 forward	<u>TGCTCCGTGTTATCAAGATTATTTCAAGAGAATAATCTTGATAACA</u> <u>CGGAGCTTTTTTG</u>	shRNA targeting $\alpha_4$
i $\alpha_4$ #1 reverse	<u>TCGACAAAAAAGCTCCGTGTTATCAAGATTATCTCTTGAATAA</u> <u>TCTTGATAACACGGAGCA</u>	
i $\alpha_4$ #2 forward	<u>TCGGGAGCAGTAATGAATGCAATTC</u> AAGAGATTGCATTCACTACT <u>GCTCCCGTTTTTTG</u>	shRNA targeting $\alpha_4$
i $\alpha_4$ #2 reverse	<u>TCGACAAAAAAGCGGAGCAGTAATGAATGCAATCTCTTGAATTG</u> <u>CATTCATTACTGCTCCCGA</u>	
i $\beta_1$ forward	<u>TGCCTTGCATTACTGCTGATATTTCAAGAGAATATCAGCAGTAAT</u> <u>GCAAGGCTTTTTTC</u>	shRNA targeting $\beta_1$
i $\beta_1$ reverse	<u>TCGAGAAAAAAGCCTTGCACTACTGCTGATATTTCAAGAGAATAT</u> <u>CAGCAGTAATGCAAGGCA</u>	
iCCR5 forward	<u>TGAGCATGACTGACATCTACTTCAAGAGAGTAGATGTCAGTCAT</u> <u>GCTCTTTTTTG</u>	shRNA targeting CCR5
iCCR5 reverse	<u>TCGACAAAAAAGAGCATGACTGACATCTACTCTCTTGAAGTAGA</u> <u>TGTCAGTCATGCTCA</u>	
scrambled forward	<u>TCCTAAGGTAAAGTCGCCCTTTCAAGAGAAGGGCGACTTAACTT</u> <u>TAGGTTTTTTG</u>	non-targeting shRNA
scrambled reverse	<u>TCGACAAAAAAGCCTAAGGTAAAGTCGCCCTTCTCTTGAAGGGC</u> <u>GACTTAACTTAGGA</u>	

The underlined positions are enzymatic restriction sites, sense or anti-sense sequences of the oligos as implicated.

infection *in vivo*, resulted in decreased HIV-1 infection.

$\alpha_4\beta_7$  is not an indispensable receptor for HIV-1 entry (Arthos J, et al., 2008; Cicala C, et al., 2010; Cicala C, et al., 2009). We focused on investigating its role as an attachment factor. In agreement with previous reports (Arthos J, et al., 2008; Nawaz F, et al., 2011), we observed that *in vitro* cellular expression of human integrin  $\alpha_4\beta_7$  conferred the capability for HIV-1 binding. Such binding likely increases the chance of HIV-1 binding to target cells. Our mutagenesis and pseudotyped virus experiments confirm that the  $\alpha_4\beta_7$ -interacting site is located on the V2 loop of the envelope glycoprotein (unpublished data) (Arthos J, et al., 2008; McLellan J S, et al., 2011).

Recent electron cryotomography has shed lights on the three dimensional architecture of native Env spike (Liu J, et al., 2008), demonstrating that the V1/V2 domain is located on the top of Env spike. In addition, the recent low-resolution crystal structure of  $\alpha_4\beta_7$  suggested that the long and wide groove between  $\alpha_4$  and  $\beta_7$  subunits likely serves as the binding site for its ligands, including mucosal vascular addressin cell adhesion molecule 1 (MAdCAM-1), Act-1 and a small antagonist (Yu Y, et al., 2012). Based on this finding, the crystal structure of a modeled full-length V1V2 loop was shown to be complementary to the groove of  $\alpha_4\beta_7$ , resembling the binding to its natural ligands (Spurrier B, et al., 2014). Although it

remains to be investigated, HIV-1 may utilize the V1V2 domain, protruding farthest away from viral membrane and nearest to the target cell, to interact with  $\alpha_4\beta_7$  and therefore facilitate viral attachment with the maximum steric advantage.

Of interest, we found that human  $\alpha_4\beta_1$  also exhibited the capability of mediating HIV-1 binding, albeit to a lesser extent. This is likely explained by that both  $\alpha_4\beta_7$  and  $\alpha_4\beta_1$  belong to the  $\alpha_4$  integrin family and share common natural ligands including vascular cell adhesion molecule-1 (VCAM-1) and fibronectin, suggesting that structural similarity exists between them. Nevertheless, we observed that down-regulation of  $\beta_1$  did not affect HIV-1 infection. This was likely due to a low level expression of  $\alpha_4\beta_1$  on CD4<sup>+</sup> T cells, and the observed marginal HIV-1 binding mediated by  $\alpha_4\beta_1$  was unlikely to be sufficient to enhance viral infection. Given that  $\alpha_4\beta_1$  is broadly distributed on many connective tissues in addition to lymphoid cells (Abram C L, et al., 2009; Yu Y, et al., 2012), targeting  $\alpha_4\beta_1$  likely affected HIV-1 infection by changing cell-cell interactions. However, the physiological implications of interaction between gp120 and  $\alpha_4\beta_1$  warrant further study.

By using anti- $\alpha_4\beta_7$  antibodies, we observed a decreased HIV-1 infection, demonstrating the potential significance of  $\alpha_4\beta_7$ . It is noteworthy that the presence of anti- $\alpha_4\beta_7$  antibodies could induce an obvious cell aggregation which varied from different antibodies used (Andrew D P, et al., 1994; Ruegg C, et al., 1992; Zeller Y, et al., 2001). Cell aggregation induced by  $\alpha_4\beta_7$  antibodies promotes cell-cell contact, consequently facilitating cell-to-cell spread of HIV-1 infection. Therefore,  $\alpha_4\beta_7$  antibodies likely have counteracting effects on HIV-1 infection. Here the negative impact of  $\alpha_4\beta_7$  antibody blockade on virus binding to cells in suspension culture is likely offset by induced cellular aggregation, facilitating more efficient cell-to-cell spread of HIV-1. Whether virus infection was increased or decreased by antibody binding most likely depends on which one of the two effects is dominant. To avoid such confounders, we adopted shRNA-mediated interference to explore the impact of  $\alpha_4\beta_7$  down-regulation on HIV-1 infection. We demonstrated that transduction of  $\alpha_4$ -specific shRNA significantly decreased HIV-1 infection. As a control, and consistent with a previous report (Qin X F, et al., 2003), CCR5-specific shRNA almost completely suppressed virus infection, confirming the indispensable role of CCR5 and the dispensable role of  $\alpha_4\beta_7$  for HIV-1 infection.

Owing to the heterogeneity of HIV-1 strains, the conformation structure of Env trimer may vary markedly from strain to strain. It remains controversial that whether  $\alpha_4\beta_7$ -utilization is a broad property across different HIV-1 strains, and the inconsistent observations from different groups may be attributed to differences in

viral strains, cell targets, and different experiment designs (Arthos J, et al., 2008; Nawaz F, et al., 2011; Parrish N F, et al., 2012; Perez L G, et al., 2014). In addition, given the structure flexibility of integrin  $\alpha_4\beta_7$  and its multistep-regulated conformation (Luo B H, et al., 2007; Yu Y, et al., 2012),  $\alpha_4\beta_7$  utilization by HIV-1 *in vivo* may be very complex. Study of transmitted/founder (T/F) HIV-1 strains which are isolated at very early stage of HIV-1 infection is of particular importance to dissect the mechanism of HIV-1 mucosal transmission and establishment of early infection (Keele B F, et al., 2008; Kishko M, et al., 2011). It is shown that the envelope glycoproteins of early-transmitted strains feature compact variable loops and less N-linked glycosylation sites compared to strains isolated during chronic infection (Chohan B, et al., 2005; Derdeyn C A, et al., 2004; Sagar M, et al., 2006). Whether T/F strains can efficiently utilize  $\alpha_4\beta_7$  and identification of the sequence property of envelope proteins determining  $\alpha_4\beta_7$  utilization are the other two interesting topics which remain to be further explored. In conclusion, our current study suggests that  $\alpha_4\beta_7$  may serve as an attachment factor at least for some HIV-1 strains, providing a promising approach for investigating the potential roles of  $\alpha_4\beta_7$  in HIV-1 infection.

## ACKNOWLEDGMENTS

This work was supported by National Natural Science Foundation of China Grant 81273250 and Ministry of Science and Technology of China Grants 2013ZX10001005-003-002 and 2012ZX10001006-002.

## COMPLIANCE WITH ETHICS GUIDELINES

The authors declare that they have no conflicts of interest. All human blood samples were collected under protocols approved by the Local Research Ethics Committee.

## AUTHOR CONTRIBUTION

CL and QH conceived and designed the experiments. CL and JW performed the experiments. CL, RJS and QH analyzed the data. BW, TD, YL and RJS contributed to discussion. CL and QH wrote the paper.

## REFERENCES

- Abram C L, Lowell C A. 2009. The ins and outs of leukocyte integrin signaling. *Annu Rev Immunol*, 27: 339–362.
- Alvarez R A, Thorborn G, Reading J L, Reddy S K, Vyakarnam A. 2011. WFDC1 expression identifies memory CD4 T-lymphocytes rendered vulnerable to cell-cell HIV-1 transfer by promoting intercellular adhesive junctions. *Retrovirology*, 8: 29.
- Andrew D P, Berlin C, Honda S, Yoshino T, Hamann A, Holzmann



- B, Kilshaw P J, Butcher E C. 1994. Distinct but overlapping epitopes are involved in  $\alpha_4\beta_7$ -mediated adhesion to vascular cell adhesion molecule-1, mucosal addressin-1, fibronectin, and lymphocyte aggregation. *J Immunol*, 153: 3847–3861.
- Arthos J, Cicala C, Martinelli E, Macleod K, Van Ryk D, Wei D, Xiao Z, Veenstra T D, Conrad T P, Lempicki R A, McLaughlin S, Pascuccio M, Gopaul R, McNally J, Cruz C C, Censoplano N, Chung E, Reitano K N, Kottlilil S, Goode D J, Fauci A S. 2008. HIV-1 envelope protein binds to and signals through integrin  $\alpha_4\beta_7$ , the gut mucosal homing receptor for peripheral T cells. *Nat Immunol*, 9: 301–309.
- Berlin C, Berg E L, Briskin M J, Andrew D P, Kilshaw P J, Holzmann B, Weissman I L, Hamann A, Butcher E C. 1993.  $\alpha_4\beta_7$  integrin mediates lymphocyte binding to the mucosal vascular addressin MAdCAM-1. *Cell*, 74: 185–195.
- Birmingham A, Anderson E, Sullivan K, Reynolds A, Boese Q, Leake D, Karpilow J, Khvorova A. 2007. A protocol for designing siRNAs with high functionality and specificity. *Nat Protoc*, 2: 2068–2078.
- Boily M C, Baggaley R F, Wang L, Masse B, White R G, Hayes R J, Alary M. 2009. Heterosexual risk of HIV-1 infection per sexual act: systematic review and meta-analysis of observational studies. *Lancet Infect Dis*, 9: 118–129.
- Borrow P, Shattock R J, Vyakarnam A. 2010. Innate immunity against HIV: a priority target for HIV prevention research. *Retrovirology*, 7: 84.
- Chohan B, Lang D, Sagar M, Korber B, Lavreys L, Richardson B, Overbaugh J. 2005. Selection for human immunodeficiency virus type 1 envelope glycosylation variants with shorter V1-V2 loop sequences occurs during transmission of certain genetic subtypes and may impact viral RNA levels. *J Virol*, 79: 6528–6531.
- Cicala C, Arthos J, Fauci A S. 2010. HIV-1 envelope, integrins and co-receptor use in mucosal transmission of HIV. *J Transl Med*, 9 Suppl 1: S2.
- Cicala C, Martinelli E, McNally J P, Goode D J, Gopaul R, Hiatt J, Jelacic K, Kottlilil S, Macleod K, O'Shea A, Patel N, Van Ryk D, Wei D, Pascuccio M, Yi L, McKinnon L, Izulla P, Kimani J, Kaul R, Fauci A S, Arthos J. 2009. The integrin  $\alpha_4\beta_7$  forms a complex with cell-surface CD4 and defines a T-cell subset that is highly susceptible to infection by HIV-1. *Proc Natl Acad Sci USA*, 106: 20877–20882.
- Dale B M, Alvarez R A, Chen B K. 2013. Mechanisms of enhanced HIV spread through T-cell virological synapses. *Immunol Rev*, 251: 113–124.
- Darc M, Hait S H, Soares E A, Cicala C, Seunanz H N, Machado E S, Arthos J A, Soares M A. 2011. Polymorphisms in the  $\alpha_4$  integrin of neotropical primates: insights for binding of natural ligands and HIV-1 gp120 to the human  $\alpha_4\beta_7$ . *PLoS One*, 6: e24461.
- Derdeyn C A, Decker J M, Bibollet-Ruche F, Mokili J L, Muldoon M, Denham S A, Heil M L, Kasolo F, Musonda R, Hahn B H, Shaw G M, Korber B T, Allen S, Hunter E. 2004. Envelope-constrained neutralization-sensitive HIV-1 after heterosexual transmission. *Science*, 303: 2019–2022.
- Etemad B, Redd A, Serwadda D, Lutalo T, Reynolds S, Gray R, Quinn T, Sagar M. 2012. Envelopes found early after acquisition compared to those in the chronically infected partner do not have enhanced  $\alpha_4\beta_7$  binding or utilization. *Retrovirology*, 9: P149.
- Haase A T. 2010. Targeting early infection to prevent HIV-1 mucosal transmission. *Nature*, 464: 217–223.
- Harris A, Borgnia M J, Shi D, Bartsaghi A, He H, Pejchal R, Kang Y K, Depetris R, Marozsan A J, Sanders R W, Klasse P J, Milne J L, Wilson I A, Olson W C, Moore J P, Subramaniam S. 2011. Trimeric HIV-1 glycoprotein gp140 immunogens and native HIV-1 envelope glycoproteins display the same closed and open quaternary molecular architectures. *Proc Natl Acad Sci U S A*, 108: 11440–11445.
- Hu Q, Napier K B, Trent J O, Wang Z, Taylor S, Griffin G E, Peiper S C, Shattock R J. 2005. Restricted variable residues in the C-terminal segment of HIV-1 V3 loop regulate the molecular anatomy of CCR5 utilization. *J Mol Biol*, 350: 699–712.
- Jelacic K, Cimbri R, Nawaz F, Huang da W, Zheng X, Yang J, Lempicki R A, Pascuccio M, Van Ryk D, Schwing C, Hiatt J, Okwara N, Wei D, Roby G, David A, Hwang I Y, Kehrl J H, Arthos J, Cicala C, Fauci A S. 2013. The HIV-1 envelope protein gp120 impairs B cell proliferation by inducing TGF- $\beta$ 1 production and FcRL4 expression. *Nat Immunol*, 14: 1256–1265.
- Keele B F, Giorgi E E, Salazar-Gonzalez J F, Decker J M, Pham K T, Salazar M G, Sun C, Grayson T, Wang S, Li H, Wei X, Jiang C, Kirchherr J L, Gao F, Anderson J A, Ping L H, Swanstrom R, Tomaras G D, Blattner W A, Goepfert P A, Kilby J M, Saag M S, Delwart E L, Busch M P, Cohen M S, Montefiori D C, Haynes B F, Gaschen B, Athreya G S, Lee H Y, Wood N, Seoighe C, Perelson A S, Bhattacharya T, Korber B T, Hahn B H, Shaw G M. 2008. Identification and characterization of transmitted and early founder virus envelopes in primary HIV-1 infection. *Proc Natl Acad Sci USA*, 105: 7552–7557.
- Kishko M, Somasundaran M, Brewster F, Sullivan J L, Clapham P R, Luzuriaga K. 2011. Genotypic and functional properties of early infant HIV-1 envelopes. *Retrovirology*, 8: 67.
- Li H, Pauza C D. 2011. HIV envelope-mediated, CCR5/ $\alpha_4\beta_7$ -dependent killing of CD4-negative  $\gamma\delta$  T cells which are lost during progression to AIDS. *Blood*, 118: 5824–5831.
- Liao Z, Roos J W, Hildreth J E. 2000. Increased infectivity of HIV type 1 particles bound to cell surface and solid-phase ICAM-1 and VCAM-1 through acquired adhesion molecules LFA-1 and VLA-4. *AIDS Res Hum Retroviruses*, 16: 355–366.
- Liu J, Bartsaghi A, Borgnia M J, Sapiro G, Subramaniam S. 2008. Molecular architecture of native HIV-1 gp120 trimers. *Nature*, 455: 109–113.
- Luo B H, Carman C V, Springer T A. 2007. Structural basis of integrin regulation and signaling. *Annu Rev Immunol*, 25: 619–647.
- Martinelli E, Veglia F, Goode D, Guerra-Perez N, Aravantinou M, Arthos J, Piatak M, Jr., Lifson J D, Blanchard J, Gettfe A, Robbiani M. 2013. The frequency of  $\alpha_4\beta_7^{\text{high}}$  memory CD4<sup>+</sup> T cells correlates with susceptibility to rectal SIV infection. *J Acquir Immune Defic Syndr*, 64: 325–331.
- Mavigner M, Cazabat M, Dubois M, L'Faqihi F E, Requena M, Pasquier C, Klopp P, Amar J, Alric L, Barange K, Vinel J P, Marchou B, Massip P, Izopet J, Delobel P. 2011. Altered CD4<sup>+</sup> T cell homing to the gut impairs mucosal immune reconstitution in treated HIV-infected individuals. *J Clin Invest*, 122: 62–69.
- McKinnon L R, Nyanga B, Chege D, Izulla P, Kimani M, Huibner S, Gelmon L, Block K E, Cicala C, Anzala A O, Arthos J, Kimani J, Kaul R. 2011. Characterization of a human cervical CD4<sup>+</sup> T cell subset coexpressing multiple markers of HIV susceptibility. *J Immunol*, 187: 6032–6042.
- McLellan J S, Pancera M, Carrico C, Gorman J, Julien J P, Khayat R, Louder R, Pejchal R, Sastry M, Dai K, O'Dell S, Patel N, Shahzad-ul-Hussan S, Yang Y, Zhang B, Zhou T, Zhu J, Boyington J C, Chuang G Y, Diwanji D, Georgiev I, Kwon Y D, Lee D, Louder M K, Moquin S, Schmidt S D, Yang Z Y, Bonsignori M, Crump J A, Kapiga S H, Sam N E, Haynes B F, Burton D R, Koff W C, Walker L M, Phogat S, Wyatt R, Orwenyo J, Wang L X, Arthos J, Bewley C A, Mascola J R, Nabel G J, Schief W R, Ward A B, Wilson I A, Kwong P D. 2011. Structure of HIV-1 gp120 V1/V2 domain with broadly neutralizing antibody PG9. *Nature*, 480: 336–343.

- Mehandru S, Poles M A, Tenner-Racz K, Horowitz A, Hurley A, Hogan C, Boden D, Racz P, Markowitz M. 2004. Primary HIV-1 infection is associated with preferential depletion of CD4<sup>+</sup> T lymphocytes from effector sites in the gastrointestinal tract. *J Exp Med*, 200: 761–770.
- Miller C J, Li Q, Abel K, Kim E Y, Ma Z M, Wietgreffe S, La Franco-Scheuch L, Compton L, Duan L, Shore M D, Zupancic M, Busch M, Carlis J, Wolinsky S, Haase A T. 2005. Propagation and dissemination of infection after vaginal transmission of simian immunodeficiency virus. *J Virol*, 79: 9217–9227.
- Mora J R, Bono M R, Manjunath N, Weninger W, Cavanagh L L, Rosenblatt M, Von Andrian U H. 2003. Selective imprinting of gut-homing T cells by Peyer's patch dendritic cells. *Nature*, 424: 88–93.
- Nawaz F, Cicala C, Van Ryk D, Block K E, Jelcic K, McNally J P, Ogundare O, Pascuccio M, Patel N, Wei D, Fauci A S, Arthos J. 2011. The genotype of early-transmitting HIV gp120s promotes  $\alpha_4\beta_7$ -reactivity, revealing  $\alpha_4\beta_7^+$ /CD4<sup>+</sup> T cells as key targets in mucosal transmission. *PLoS Pathog*, 7: e1001301.
- Parrish N F, Wilen C B, Banks L B, Iyer S S, Pfaff J M, Salazar-Gonzalez J F, Salazar M G, Decker J M, Parrish E H, Berg A, Hopper J, Hora B, Kumar A, Mahlokozera T, Yuan S, Coleman C, Vermeulen M, Ding H, Ochsenbauer C, Tilton J C, Permar S R, Kappes J C, Betts M R, Busch M P, Gao F, Montefiori D, Haynes B F, Shaw G M, Hahn B H, Doms R W. 2012. Transmitted/founder and chronic subtype C HIV-1 use CD4 and CCR5 receptors with equal efficiency and are not inhibited by blocking the integrin  $\alpha_4\beta_7$ . *PLoS Pathog*, 8: e1002686.
- Perez L G, Chen H, Liao H X, Montefiori D C. 2014. Envelope glycoprotein binding to the integrin  $\alpha_4\beta_7$  is not a general property of most HIV-1 strains. *J Virol*, 88: 10767–10777.
- Qi J, Zhang K, Zhang Q, Sun Y, Fu T, Li G, Chen J. 2012. Identification, characterization, and epitope mapping of human monoclonal antibody J19 that specifically recognizes activated integrin  $\alpha_4\beta_7$ . *J Biol Chem*, 287: 15749–15759.
- Qin X F, An D S, Chen I S, Baltimore D. 2003. Inhibiting HIV-1 infection in human T cells by lentiviral-mediated delivery of small interfering RNA against CCR5. *Proc Natl Acad Sci USA*, 100: 183–188.
- Richardson S I, Mkhize N, Abdool Karim S, Gray E, Morris L. 2013. Role of integrin  $\alpha_4\beta_7$  in HIV transmission and pathogenesis. Barcelona, Spain, pp. 73.
- Ruegg C, Postigo A A, Sikorski E E, Butcher E C, Pytela R, Erle D J. 1992. Role of integrin  $\alpha_4\beta_7/\alpha_4\beta_1$  in lymphocyte adherence to fibronectin and VCAM-1 and in homotypic cell clustering. *J Cell Biol*, 117: 179–189.
- Sagar M, Wu X, Lee S, Overbaugh J. 2006. Human immunodeficiency virus type 1 V1-V2 envelope loop sequences expand and add glycosylation sites over the course of infection, and these modifications affect antibody neutralization sensitivity. *J Virol*, 80: 9586–9598.
- Sattentau Q. 2008. HIV's gut feeling. *Nat Immunol*, 9: 225–227.
- Spurrier B, Sampson J, Gorny M K, Zolla-Pazner S, Kong X P. 2014. Functional Implications of the Binding Mode of a Human Conformation-dependent V2 Monoclonal Antibody against HIV. *J Virol*.
- Temchura V, Tenbusch M. 2014. The two faces of vaccine-induced immune response: protection or increased risk of HIV infection?! *Virology*, 29: 7–9.
- Tidswell M, Pachynski R, Wu S W, Qiu S Q, Dunham E, Cochran N, Briskin M J, Kilshaw P J, Lazarovits A I, Andrew D P, Butcher E C, Yednock T A, Erle D J. 1997. Structure-function analysis of the integrin  $\beta_7$  subunit: identification of domains involved in adhesion to MAdCAM-1. *J Immunol*, 159: 1497–1505.
- Tiscornia G, Singer O, Ikawa M, Verma I M. 2003. A general method for gene knockdown in mice by using lentiviral vectors expressing small interfering RNA. *Proc Natl Acad Sci USA*, 100: 1844–1848.
- Tjomsland V, Ellegard R, Kjolhede P, Wodlin N B, Hinkula J, Lifson J D, Larsson M. 2013. Blocking of integrins inhibits HIV-1 infection of human cervical mucosa immune cells with free and complement-opsonized virions. *Eur J Immunol*, 43: 2361–2372.
- Tsai L, Tasovski I, Leda A R, Chin M P, Cheng-Mayer C. 2014. The number and genetic relatedness of transmitted/founder virus impact clinical outcome in vaginal R5 SHIV<sub>SF162P3N</sub> infection. *Retrovirology*, 11: 22.
- Veazey R S, DeMaria M, Chalifoux L V, Shvets D E, Pauley D R, Knight H L, Rosenzweig M, Johnson R P, Desrosiers R C, Lackner A A. 1998. Gastrointestinal tract as a major site of CD4<sup>+</sup> T cell depletion and viral replication in SIV infection. *Science*, 280: 427–431.
- Wang X, Xu H, Gill A F, Pahar B, Kempf D, Rasmussen T, Lackner A A, Veazey R S. 2009. Monitoring  $\alpha_4\beta_7$  integrin expression on circulating CD4<sup>+</sup> T cells as a surrogate marker for tracking intestinal CD4<sup>+</sup> T-cell loss in SIV infection. *Mucosal Immunol*, 2: 518–526.
- Wawer M J, Gray R H, Sewankambo N K, Serwadda D, Li X, Laeyendecker O, Kiwanuka N, Kigozi G, Kiddugavu M, Lutalo T, Nalugoda F, Wabwire-Mangen F, Meehan M P, Quinn T C. 2005. Rates of HIV-1 transmission per coital act, by stage of HIV-1 infection, in Rakai, Uganda. *J Infect Dis*, 191: 1403–1409.
- Wurm F M. 2004. Production of recombinant protein therapeutics in cultivated mammalian cells. *Nat Biotechnol*, 22: 1393–1398.
- Wyatt R, Kwong P D, Desjardins E, Sweet R W, Robinson J, Hendrickson W A, Sodroski J G. 1998. The antigenic structure of the HIV gp120 envelope glycoprotein. *Nature*, 393: 705–711.
- Yu Y, Zhu J, Mi L Z, Walz T, Sun H, Chen J, Springer T A. 2012. Structural specializations of  $\alpha_4\beta_7$ , an integrin that mediates rolling adhesion. *J Cell Biol*, 196: 131–146.
- Zeller Y, Mechttersheimer S, Altevogt P. 2001. Critical amino acid residues of the  $\alpha_4$  subunit for  $\alpha_4\beta_7$  integrin function. *J Cell Biochem*, 83: 304–319.
- Zhang Z Q, Wietgreffe S W, Li Q, Shore M D, Duan L, Reilly C, Lifson J D, Haase A T. 2004. Roles of substrate availability and infection of resting and activated CD4<sup>+</sup> T cells in transmission and acute simian immunodeficiency virus infection. *Proc Natl Acad Sci USA*, 101: 5640–5645.