



OPEN

Multivariable mortality risk prediction using machine learning for COVID-19 patients at admission (AICOVID)

Sujoy Kar^{1✉}, Rajesh Chawla², Sai Praveen Haranath¹, Suresh Ramasubban³, Nagarajan Ramakrishnan⁴, Raju Vaishya⁵, Anupam Sibal⁵ & Sangita Reddy¹

In Coronavirus disease 2019 (COVID-19), early identification of patients with a high risk of mortality can significantly improve triage, bed allocation, timely management, and possibly, outcome. The study objective is to develop and validate individualized mortality risk scores based on the anonymized clinical and laboratory data at admission and determine the probability of Deaths at 7 and 28 days. Data of 1393 admitted patients (Expired—8.54%) was collected from six Apollo Hospital centers (from April to July 2020) using a standardized template and electronic medical records. 63 Clinical and Laboratory parameters were studied based on the patient's initial clinical state at admission and laboratory parameters within the first 24 h. The Machine Learning (ML) modelling was performed using eXtreme Gradient Boosting (XGB) Algorithm. 'Time to event' using Cox Proportional Hazard Model was used and combined with XGB Algorithm. The prospective validation cohort was selected of 977 patients (Expired—8.3%) from six centers from July to October 2020. The Clinical API for the Algorithm is <http://20.44.39.47/covid19v2/page1.php> being used prospectively. Out of the 63 clinical and laboratory parameters, Age [adjusted hazard ratio (HR) 2.31; 95% CI 1.52–3.53], Male Gender (HR 1.72, 95% CI 1.06–2.85), Respiratory Distress (HR 1.79, 95% CI 1.32–2.53), Diabetes Mellitus (HR 1.21, 95% CI 0.83–1.77), Chronic Kidney Disease (HR 3.04, 95% CI 1.72–5.38), Coronary Artery Disease (HR 1.56, 95% CI – 0.91 to 2.69), respiratory rate > 24/min (HR 1.54, 95% CI 1.03–2.3), oxygen saturation below 90% (HR 2.84, 95% CI 1.87–4.3), Lymphocyte% in DLC (HR 1.99, 95% CI 1.23–2.32), INR (HR 1.71, 95% CI 1.31–2.13), LDH (HR 4.02, 95% CI 2.66–6.07) and Ferritin (HR 2.48, 95% CI 1.32–4.74) were found to be significant. The performance parameters of the current model is at AUC ROC Score of 0.8685 and Accuracy Score of 96.89. The validation cohort had the AUC of 0.782 and Accuracy of 0.93. The model for Mortality Risk Prediction provides insight into the COVID Clinical and Laboratory Parameters at admission. It is one of the early studies, reflecting on 'time to event' at the admission, accurately predicting patient outcomes.

The current COVID-19 pandemic caused by SARS-CoV-2 is associated with high mortality and morbidity¹. In India, over 10 million individuals have been affected by the virus (till mid January), with over 150 thousand people losing their lives, at a mortality rate of 1.44%². However, the 30 days mortality rates at tertiary care hospitals in the US are far higher at 9.06% to 15.65%³. Various studies have been conducted to determine the mortality risk factors in COVID 19^{4–6}. Understanding the clinical and laboratory predictors at admission can lead to appropriate determinants of mortality and improve triaging, bed and resource allocation, and improved patient management throughout health systems.

The datasets of COVID-19 patients can be integrated and analysed by Machine Learning (ML) algorithms to improve diagnostic speed and accuracy better and potentially identify the most susceptible people based on personalized clinical and laboratory characteristics⁷. These methods activate early insights of patient's outcome with the predictors at the time of admission. Existing studies have used Machine Learning Algorithms (MLA) to determine COVID-19 mortality^{8–10}.

¹Apollo Hospitals, Jubilee Hills, Hyderabad 500033, India. ²Indraprastha Apollo Hospitals, Sarita Vihar, New Delhi, India. ³Apollo Multispecialty Hospitals, Kolkata 700054, India. ⁴Apollo Hospitals, Greams Road, Chennai, India. ⁵Indraprastha Apollo Hospitals, Sarita Vihar, New Delhi, India. ✉email: drsujoy_k@apollohospitals.com

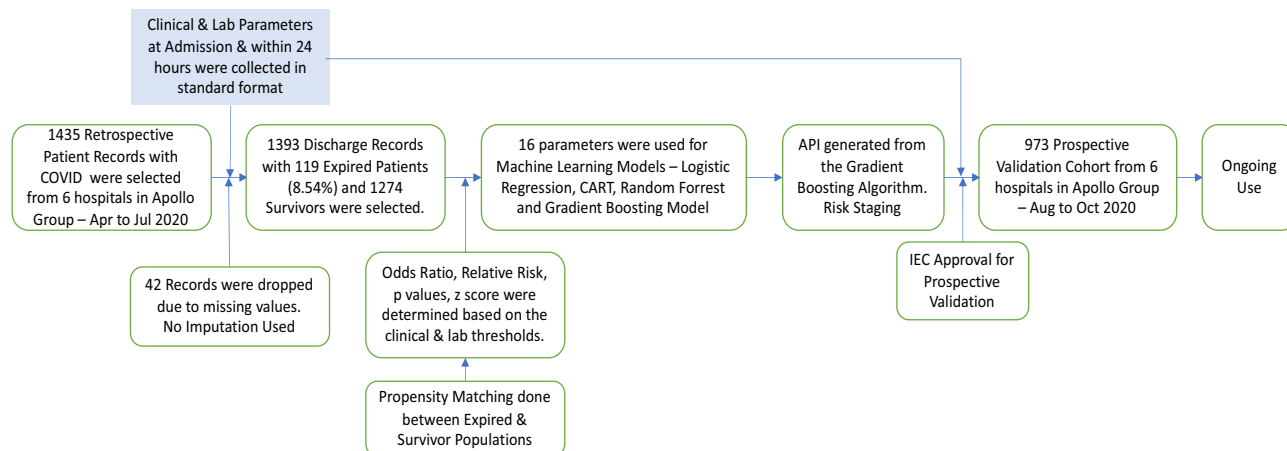


Figure 1. Schematic flow of the development and validation of the AICOVID algorithm to predict the risk of mortality at admission.

Due to the absence of similar studies in the Indian population, this research work was undertaken to develop and validate MLA based on the anonymized clinical and laboratory data to predict the outcome (Expired or Recovered) from retrospective evaluation of patients admitted with COVID (Fig. 1). Additionally, the algorithm determines the probability (risk) of Events (defined as Death or Expiry of Subjects), predicting mortality at 7 and 28 days. Secondly this would provide clinical insights on various clinical and laboratory parameters. These are clinically and statistically relevant and help develop a Clinical API (application and programming interface) tool used by clinicians taking care of admitted patients even in low-cost settings.

The main contribution of the paper is to identify the risk factors for mortality at admission of COVID-19 patients and to build a multivariable Machine Learning model which would help in triaging, allocating resources, putting patients into an appropriate clinical protocol, and patient and family education at admission.

The remainder of this paper includes Methodology, Study design and modelling in “Methodology” section; “Results” in “Results” section, Interpretation and Limitations in “Limitation” section, followed by Conclusion in “Conclusion” section.

Methodology

This study is designed as a multicenter, retrospective—prospective, observational, non-interventional study.

Source of data. The retrospective data (for the development cohort) is collected from the anonymized clinical and laboratory records at admission from the discharge summaries of the patients and a standardized template (Annexure 1) from six Apollo Hospitals in India for the period of April to June 2020. These Hospitals are from Bangalore Chennai, Delhi, Hyderabad, Kolkata, and Navi Mumbai. On the prospective validation arm, the data elements at admission were provided by the site investigator in the electronic template (API—Fig. 4). Additional data were collected from discharge summaries, and the standardized template described. For discharged summaries, we used appropriately coded ICD-10 diagnosis data. The validation cohort was collected from the same six hospitals in the period between August to October 2020.

Participants. The participants were admitted to the hospital with symptoms and history suggestive^{11,12} of Coronavirus Disease (COVID) with subsequent laboratory confirmation through Reverse Transcription Polymerase Chain Reaction (RT-PCR tests). The data were collected during admission at Emergency Room and following admission (within 24 h). The eligibility criteria for inclusion of the patients included—(a) patients presenting with COVID-19 related symptoms (with or without a history of contact/travel to geographical hot spots in the community), (b) subjects who comply with category B2/C in the Apollo Hospitals COVID protocol (See Annexure 2). The exclusion criteria were (a) patients admitted for other disease conditions and were subsequently found to have COVID during the hospital stay. The study did not include any specific intervention or treatment provided to the patient during admission or within its 24 h. The Institutional Ethics Committees of the six Apollo Hospitals (specified above) have approved the research and confirmed that all research was performed in accordance with relevant guidelines/regulations, and that informed consent was obtained from all participants and/or their legal guardians. Research involving human research participants has been performed in accordance with the Declaration of Helsinki.

Outcome. The study’s primary outcome was to develop comparable models with improved accuracy parameters, which would yield a risk predictor for mortality (in the next 7 and 28 days) at admission. Each predictor (clinical and laboratory variables) are studied for their odds and hazard ratios.

Predictors. The Clinical Variables included patient’s basic information, including Age and Gender, Exposure and Travel history, and the number of days of symptoms before admission. It also included different symptoms

Development								Validation					
Clinical and lab parameters	Threshold	Recovered		Expired		Odds ratio		Recovered		Expired		Odds ratio	
		Mean	CI	Mean	CI	Odds ratio	p value	Mean	CI	Mean	CI	Odds ratio	p value
Age	60	47.19	46.28–48.09	61.13	57.98–64.28	4.59	<0.0001	53.4	52.39–54.4	67.41	64.52–70.3	5.12	<0.0001
Gender (male)	N/A	0.68	0.65–0.7	0.78	0.7–0.85	1.67	0.0328	0.72	0.69–0.75	0.85	0.77–0.93	1.19	0.2937
Fever	N/A	0.62	0.59–0.65	0.76	0.68–0.84	1.94	0.0043	0.58	0.55–0.62	0.02	0.01–0.06	0.17	<0.0001
Cough	N/A	0.37	0.34–0.39	0.43	0.34–0.52	1.33	0.1641	0.5	0.47–0.53	0.47	0.36–0.58	0.74	0.0389
Respiratory distress	N/A	0.21	0.18–0.23	0.57	0.48–0.66	5.01	<0.0001	0.13	0.1–0.15	0.51	0.4–0.62	3.08	<0.0001
Weakness	N/A	0.09	0.08–0.11	0.17	0.1–0.24	1.96	0.0148	0.15	0.12–0.17	0.21	0.12–0.3	0.65	0.038
Diabetes	N/A	0.29	0.26–0.31	0.57	0.48–0.66	3.33	<0.0001	0.39	0.36–0.42	0.52	0.41–0.63	2.15	<0.0001
Hypertension	N/A	0.3	0.27–0.32	0.5	0.4–0.59	2.37	<0.0001	0.42	0.39–0.45	0.58	0.47–0.69	2.09	<0.0001
Chronic kidney disease	N/A	0.05	0.04–0.07	0.16	0.09–0.23	3.24	<0.0001	0.05	0.04–0.06	0.19	0.1–0.27	4.1	<0.0001
Chronic liver disease	N/A	0.01	0–0.01	0.02	0.01–0.04	3.44	0.1261	0.01	0–0.01	0.01	0.01–0.04	3.85	0.0378
Heart disease	N/A	0.06	0.05–0.07	0.24	0.16–0.32	5.04	<0.0001	0.09	0.07–0.11	0.02	0.01–0.06	2.11	0.0017
Respiration rate	24	21.63	21.44–21.83	27.33	26.12–28.55	6.77	<0.0001	21.56	21.29–21.82	28.49	26.74–30.25	4.56	<0.0001
Oxygen saturation	0.88	0.97	0.96–0.98	0.88	0.86–0.9	22.32	<0.0001	0.95	0.95–0.96	0.85	0.82–0.88	7.58	<0.0001
WBC count	8000	6684	6510–6858	9907	8039–11,775	3.64	<0.0001	7076	6596–7556	12,919	10,747–15,091	3.29	<0.0001
Lymphocyte%	10	25.37	24.74–26	10.06	8.48–11.64	11.93	<0.0001	30.63	29.86–31.4	19.64	17.31–21.98	3.92	<0.0001
INR (PT)	1.3	1.13	1.12–1.15	1.32	1.24–1.39	4.58	<0.0001	1.41	1.36–1.45	1.98	1.71–2.25	3.49	<0.0001
Creatinine	1.3	1.19	1.11–1.28	1.79	1.43–2.15	3.26	<0.0001	9.69	9.08–10.3	3.28	2.77–3.8	14.08	<0.0001
Albumin	3.5	4.05	4.02–4.08	3.61	3.48–3.74	3.95	<0.0001	4.08	4.05–4.11	3.62	3.43–3.81	3.1	<0.0001
AST (aspartate aminotransferase)	60	47.66	45.54–49.79	64.54	48.34–80.74	1.58	0.0452	50.18	46.17–54.18	167.16	113.39–220.93	3.49	<0.0001
Lactate dehydrogenase	450	315.07	307–322	565.79	509.5–622.0	8.6	<0.0001	334.61	324.21–345	602.49	545.26–659.73	8.46	<0.0001
Ferritin	800	518.98	446–591	1566.7	942.9–2190.4	3.76	<0.0002	536.44	489–583	1772.16	1397–2147	4.15	<0.0001
C-reactive protein	48	35.72	28.9–42.54	145.92	87.5–204.34	5.35	<0.0001	36.94	33.55–40.33	135.9	110.33–161.48	3.44	<0.0001
Red cell distribution width	14.5	14.27	14.18–14.37	14.55	14.22–14.87	1.21	0.368	14.5	14.37–14.63	16.44	15.84–17.05	3.06	<0.0001

Table 1. 23 key clinical and lab variables for the prediction of mortality at admission with COVID-19.

like fever, cough, respiratory distress (shortness of breath), etc. The history of associated chronic diseases like diabetes, hypertension, heart and kidney disease, cancer, etc., was captured. Vitals at admissions like temperature, oxygen saturation, rate of respiration (ROR), and pulse rate were noted. Laboratory parameters were categorized into (a) Complete Hemogram including Red Cell Distribution Width, (b) Basic biochemistry including Kidney and Liver Profile Tests, (c) Coagulation Profile including Prothrombin Time, International Randomized Ratio (INR), Activated Prothomboplastin Time (APTT) and D-dimer, (d) Inflammatory markers like C-Reactive Protein (CRP), Lactic Acid Dehydrogenase (LDH), Ferritin, Interleukin-6 and Procalcitonin, were evaluated. Out of more than 65 predictors, we selected only 23 predictors based on their odds ratio, *p* value (Table 1), and clinical relevance. D-dimer and Interleukins were not selected in the study due to the smaller sample size (<30%). For Validation data, there were no differences from the development data in setting, eligibility criteria, outcome and predictors.

Sample size. The study included a total population of 2370 patients, including 1393 in the Development Cohort and 977 in the Validation cohort. The sample size was determined using an estimated 10 million COVID Cases in India (October 2020) at 95% confidence level and confidence interval 2.

Missing data. The initial development cohort was 1435. Forty-two patient's data were dropped owing to missing fields. No imputations were used in the development or validation cohort. As described earlier, certain laboratory predictors were not selected due to the smaller sample size and missing values.

Statistical analysis and modelling approach. The clinical and laboratory parameters were selected based on the odds ratios of the initial cohort. The parameters were subsequently run through the Propensity Matching for the binary classification of Event (Death—1) and Non-Events (Survival—0). The population is randomly divided into training (70%) and test (30%) in the development model. The 23 parameters were then put through the three models for maximizing the K-fold cross-validation AUC (Area Under Curve) using Python (3.7) to determine the performance of logistic regression, random forest models, and eXtreme gradient boosting (XGB) algorithm.

However, we considered the XGB (eXtreme Gradient Boosting) model, as the function of this model is an approximation of the data distribution considering the errors:

$$y_i = F_1(x_i) + \text{error}_{1i}$$

where y_i is the predicted value and x_i are the input values. $F_1(x_i)$ is a function, and the relationship between x and y is not fully described.

1. We initialize the model by solving the following equation for the 23 input parameters:

$F_0(x) = \text{argmin} \sum_{i=1}^n L(y_i, \gamma)$; then we get

$$F_0(x) = \frac{\sum_{i=1}^n y_i}{n}$$

where n is the total number of observation, i.e., 1393. $F_1(x_i)$ function is a weak learner, and the relationship between X and y is not fully described.

2. For no of iterations— $m = 1$ to M

Gradient with respect to predicted value,

$$r_{im} = - \left\{ \frac{\partial L[y_i, F_{m-1}(x_i)]}{\partial F_{m-1}(x_i)} \right\},$$

where i is the index for observations, m represents the number of iterations with $m \in [1, M]$. M is the maximum number of iterations. L stands for loss functions.

3. Fit the weak learner $h_m(x)$ to the residuals by:

Computing the γ_m to solve the optimization problem:

$$\gamma_m = \text{argmin} \sum_{i=1}^n L[y_i, F_{m-1}(x_i) + \gamma_m \cdot h_m(x_i)]$$

By solving this equation we can get:

$$\gamma_m = \frac{\sum_{i=1}^n h_m(x_i) \cdot [y_i - F_{m-1}(x_i)]}{\sum_{i=1}^n h_m(x_i)^2}$$

4. Update the $F_m(x) = F_{m-1}(x) + \gamma_m \cdot h_m(x)$

squared error is used as the loss function, and the gradient of the loss function can be calculated as follows:

$$\begin{aligned} r_{im} &= - \left\{ \frac{\partial L[y_i, F_{m-1}(x_i)]}{\partial F_{m-1}(x_i)} \right\}, \\ &= - \frac{\partial \left\{ \frac{1}{2} \times [F_{m-1}(x_i) - y_i]^2 \right\}}{\partial F_{m-1}(x_i)} \\ &= - \frac{\partial \left\{ \frac{1}{2} \times [F_{m-1}(x_i)^2 + y_i^2 - 2 \times F_{m-1}(x_i) \cdot y_i] \right\}}{\partial F_{m-1}(x_i)} \\ &= y_i - F_{m-1}(x_i) \text{ for } i = 1, 2, \dots, n. \end{aligned}$$

Python language is used to code the program. Python ML packages were used, namely Sklearn, numpy and pandas library is used for this work. The code snippet for XGB model = XGB Classifier (n estimators = 1997, learning rate = 0.2, max depth = 5, random state = 42). These details are obtained through multiple trial and error methods with many hyperparameters derived from the variables. Similarly for Random Forest Model n _estimators were selected as 100, with max depth at 5.

After training model and successful testing, the model is pickled and saved. This pickled model is hosted and served as the back end for requests from the front end user. The user's values will act as input for the model, and the predicted response would be output.

Risk stratification. On the input of the individual data to the algorithm, the machine returns the value in percentage of the risk of mortality in the next 7 and 28 days. The risk thresholds between 0 and 15% are associated with low mortality rates (<1%), while the moderate risk category 15–30% had 1–5% Mortality and high-risk category (>30%) at >5% Mortality. Further, the Cox Proportional Hazard model's addition returned the probability of mortality in 7 and 28 days and has been used to display in the output.

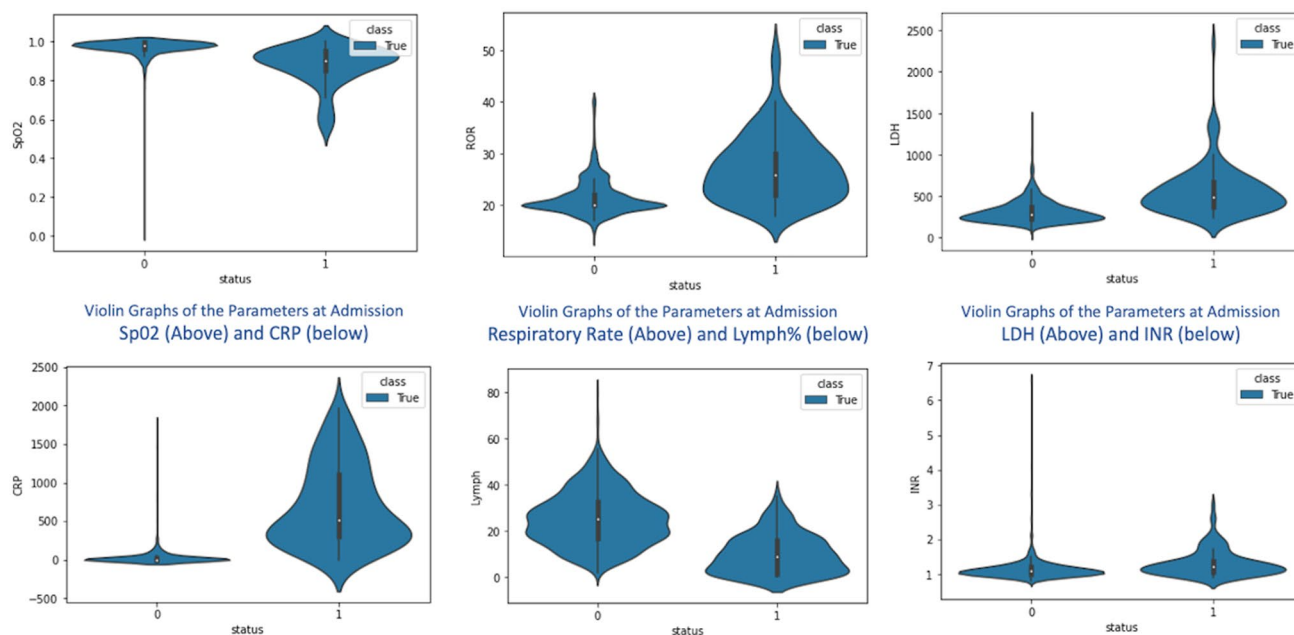


Figure 2. Combination of Box Plots and Kernel Density Plots reflect on different clinical and lab variables at admission and their representation for Survival (0) vs. Expired Patients (1). The white dot represents the median, the thick grey bar in the centre represents the interquartile range, the thin grey line represents the rest of the distribution, except for points that are outliers. [Development Cohort].

Predictors analysis. Hazard Ratios are calculated for each predictor, based on their accepted clinical and laboratory thresholds, as applicable. (see Table 1 for Thresholds) Kaplan Meir curves and Violin plots were used to analyze the effect of individual variables on overall mortality.

Performance evaluation. All models are evaluated based on their ability to discriminate between outcomes for the development cohort and the XGB Model for the validation cohort with the corresponding confidence intervals (CI). The AUC, accuracy, sensitivity—specificity, precision, predictive value, and likelihood ratios are computed for validation cohort with a standard threshold. Thresholds are derived through the mean cut off values of different parameters including their clinical and laboratory ranges.

Patient and public involvement. The study has been conducted with retrospective data from April to July 2020, and hence development of the research question and outcome measures were not directly communicated to the patients in the development cohort. However, in the validation cohort, they were informed about the study design and outcome.

Results

Clinical and laboratory variables at admission (participants). The average observed mortality rates are 8.54% (N=1393) in the development cohort and 8.3% in the validation cohort (N=977) for six different hospitals in April to July 2020 and August to October 2020, respectively. The average Length of Stay in the study population is 10.04 (9.75–10.3) days for survived patients and 12.32 (11.2–13.5) days for expired patients. In Age comparison, expired patients were older (mean age 61.1 vs. 47.2 in the development cohort and 67.4 vs. 53.4 in the validation cohort). The gender of expired patients was 78% & 85% male in the development and validation cohort. Further details of the symptoms, comorbidities, vitals at admission, and laboratory parameters are provided in Table 1. Significantly, the odds ratios for Respiratory Distress [5.01], Diabetes [3.33], Heart Disease [5.04] are high in the development cohort as symptoms and comorbidities. Odds ROR >24/min, Oxygen saturation <90% are at 6.77 and 22.32 respectively. In lab parameters, Lymphocytes below 10% [11.93], Lactate Dehydrogenase >250 units [8.6] and C-reactive protein >48 units [5.35] show high significance. Figure 2—shows the different parameters with violin graphs.

Performance indicators (model development and validation). The performance of the XGB model is summarized in Fig. 3 below. The AUC for the developed algorithm is 0.88, Accuracy score at 0.97, and precision at 0.91. The validation cohort's performance is AUC at 0.78, Accuracy score at 0.93, and precision at 0.77. The positive likelihood ratio is at 15.06, and the negative predictive value is 96.41%. The critical clinical and laboratory variables in the ML model depict the important predictors of the overall outcome and interplay between each of them.

AUC ROC Score 0.8841483160621761 Confusion Matrix : [[381 5] [7 25]]					AUC ROC Score 0.7823798500881834 Confusion Matrix : [[860 36] [32 49]]				
sensitivity: 0.78125 specificity: 0.9870466321243523 Accuracy Score : 0.9712918660287081					sensitivity: 0.6049382716049383 specificity: 0.9598214285714286 Accuracy Score : 0.9303991811668373				
Model Performance N = 1393					Validation Performance N = 977				
Report :					Report :				
	precision	recall	f1-score	support		precision	recall	f1-score	support
0	0.98	0.99	0.98	386	0	0.96	0.96	0.96	896
1	0.83	0.78	0.81	32	1	0.58	0.60	0.59	81
accuracy			0.97	418	accuracy			0.93	977
macro avg	0.91	0.88	0.90	418	macro avg	0.77	0.78	0.78	977
weighted avg	0.97	0.97	0.97	418	weighted avg	0.93	0.93	0.93	977
					Positive Likelihood Ratio	15.06	10.45 to 21.69		
					Negative Likelihood Ratio	0.41	0.31 to 0.54		
					Positive Predictive Value (*)	57.68%	48.61% to 66.26%		
					Negative Predictive Value (*)	96.41%	95.35% to 97.23%		

Figure 3. Performance of eXtreme Gradient Boosting (XGB) Algorithm for the Development and Validation Cohort.

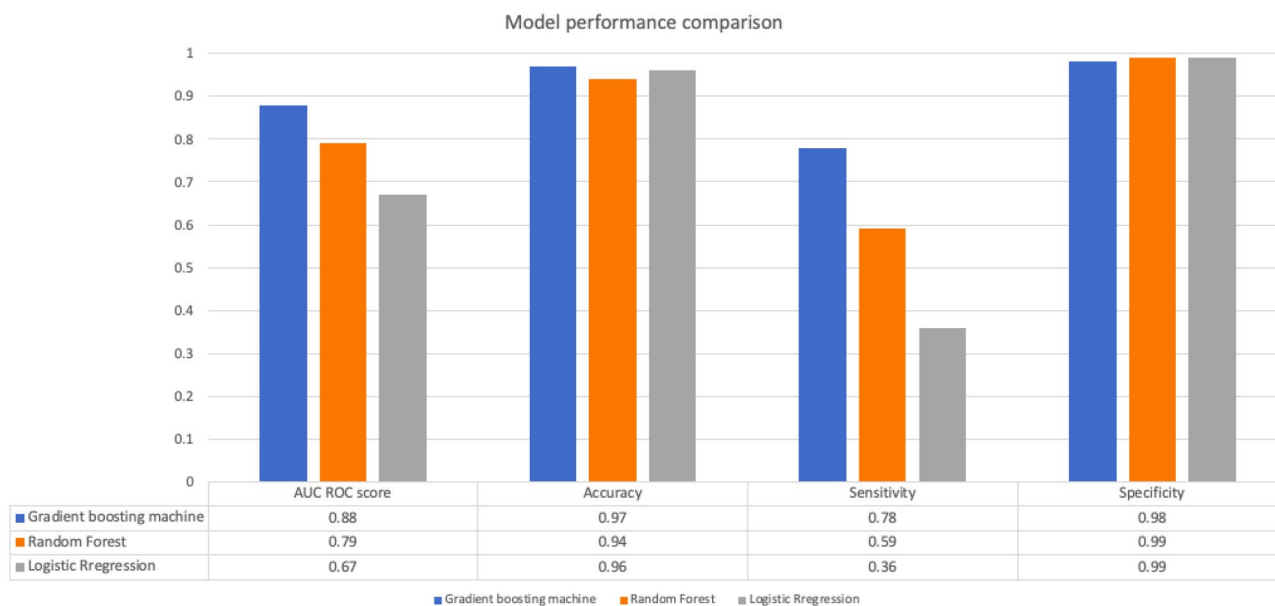


Figure 4. Comparing the performance of eXtreme Gradient Boosting (XGB) Algorithm with Logistic Regression and Random Forest for the development cohort.

Propensity matching scores. The results of the propensity matching scores for the Survivor and Mortality Groups in the development dataset using Hosmer and Lemeshow Goodness of Fit (GOF) test are—X-squared (1.2341), *df* (8), *p* value (0.9963), AIC value (241.148), Log-likelihood (− 94.574), adjusted R square (0.7509801), Pseudo-R-squared values at—McFadden (0.750980), Nagelkerke (Cragg and Uhler) (0.799456). We achieved following values for the validation set—X-squared (3.2107), *df* (8), *p* value (0.9204), AIC value (288.9656), Log-likelihood (− 118.4828), adjusted R square (0.6598251), Pseudo-R squared values at McFadden (0.659825), Nagelkerke (Cragg and Uhler) (0.740693).

Comparison. When the eXtreme Gradient Boosting (XGB) algorithm is compared with the other models, the comparative results are given in Fig. 4. There is an overall improvement in AUC ROC Scores and Sensitivity in the Gradient Boosting Model compared to the other two models studied.

Model specification—hazard ratio and survivability plots. We analysed the Hazard Ratios to determine each predictor’s effect and contribution in the model and their interplay with other factors. This is done

	Hazard ratio	Confidence interval	z	p value
Age > 60 years	2.31	1.52–3.53	3.9	<0.005
Gender (male)	1.72	1.06–2.85	–2.2	0.03
Fever	0.28	0.16–0.46	–4.85	<0.005
Cough	1.02	0.7–1.47	0.09	0.82
Respiratory distress	1.01	0.62–1.53	0.02	0.84
Weakness	1.69	0.91–2.94	–1.91	0.05
Diabetes	1.21	0.83–1.77	1	0.14
Hypertension	1.04	0.7–1.55	–0.16	0.83
Chronic kidney disease	3.04	1.72–5.38	3.88	<0.005
Chronic liver disease	3.95	1.16–13.42	2.2	0.02
Heart disease	1.56	0.91–2.69	1.61	0.11
ROR	1.54	1.03–2.3	2.03	0.04
Oxygen saturation (SpO ₂)	2.84	1.87–4.3	2.11	<0.005
WBC count	1	1	4.9	0.91
Lymphocytes %	1.99	1.23–3.2	–1.95	<0.005
INR (prothrombin time)	0.96	0.82–1.13	2.83	0.64
Creatinine	0.82	0.78–0.87	–0.47	<0.005
Albumin	1.36	1.03–1.78	–7.46	0.03
AST (liver enzyme)	1.11	0.89–1.33	1.86	0.01
Lactate dehydrogenase	4.02	2.66–6.07	2.54	<0.005
Ferritin	2.48	1.32–4.74	6.61	<0.005
C-reactive protein	1.65	1.11–2.46	–2.95	0.01
Red cell distribution width	1.03	0.95–1.12	2.45	0.53

Table 2. Adjusted hazard ratios (multivariate) of the 23 Predictors, calculated based on 28 days Mortality in validation Cohorts.

keeping in mind that the odd's ratios in Table 1 are for single variables where the Hazard Ratios provide the multivariable perspective. The hazard ratios of the 23 variables are provided in Table 2

Further to the Hazard Ratios analysis of individual clinical and laboratory predictors, we looked at the predictors' feature in survivability analysis using Kaplan Meier (KM) Plots. KM Plots were prepared for both development and validation cohorts and studied for Comorbidities like Diabetes, Hypertension, and existing Heart Diseases (Coronary Artery Diseases). Heart disease has a seemingly better outcome in the validation cohort, probably due to early intervention and education among patients. In the validation cohort, we can see a considerable change in—Respiratory Distress, Respiratory Rates > 24/min, and Oxygen Saturation below < 90%, which reflects that despite best efforts, patients with significant respiratory failure at admission continue to have a poorer prognosis in 28 days. In Laboratory parameters, LDH, INR, Ferritin, and Red cell Distribution Width show almost similar trends, while low Lymphocyte% contributes higher mortality predominantly in Development Cohort (Fig. 5).

Discussion

Interpretation. The AICOVID Risk Prediction Model uses the data from different Indian Hospitals and populations and predicts the outcome (Mortality or Survival) of the patient at the time of admission with 23 Predictors (Clinical and Laboratory) data. This Model, with its existing accuracy, is a comprehensive AI-enabled tool to assist the physician in (a) making triage decision, (b) provide guidance for resource allocation for High and Moderate Risk patients, (c) put them in appropriate Clinical Algorithm (Protocol) Annexure 2 and finally (d) provides a systemic approach of patient and family education related to disease severity during admission. This tool uses basic clinical and laboratory predictors that can be easily accessed in low-cost Indian populations and can be implemented as a secured application programming interface (API).

The model considers Patient's Age above 60 years as an important predictor and High Risk of Mortality, significantly shown here with higher hazard ratio in the validation cohort (2.31; CI 1.52–3.53)¹³. Interestingly, CDC (Dec 2020) finds similar range of mortality comparison between patients below and above 65 years in US population¹⁴. Further, male gender has hazard ratios (1.72, 95% CI 1.06–2.85) signifying higher risk of mortality in male population, which is congruent to other international studies¹⁵ where odds of death has been (1.39; 95% CI 1.31–1.47) comparable. Respiratory Symptoms like distress, higher rate of respiration (> 24/min) or silent hypoxemia detected through lower oxygen level (< 90%) have shown higher risk of mortality (see Table 2) and find their due weightage in the eXtreme Gradient Boosting (XGB) algorithm. The reason to include seemingly similar attributes as they represent different aspects of symptoms and vital physiological parameters at admission. This has also been studied extensively in US patients¹⁶. The study does not include the High and Moderate Risk

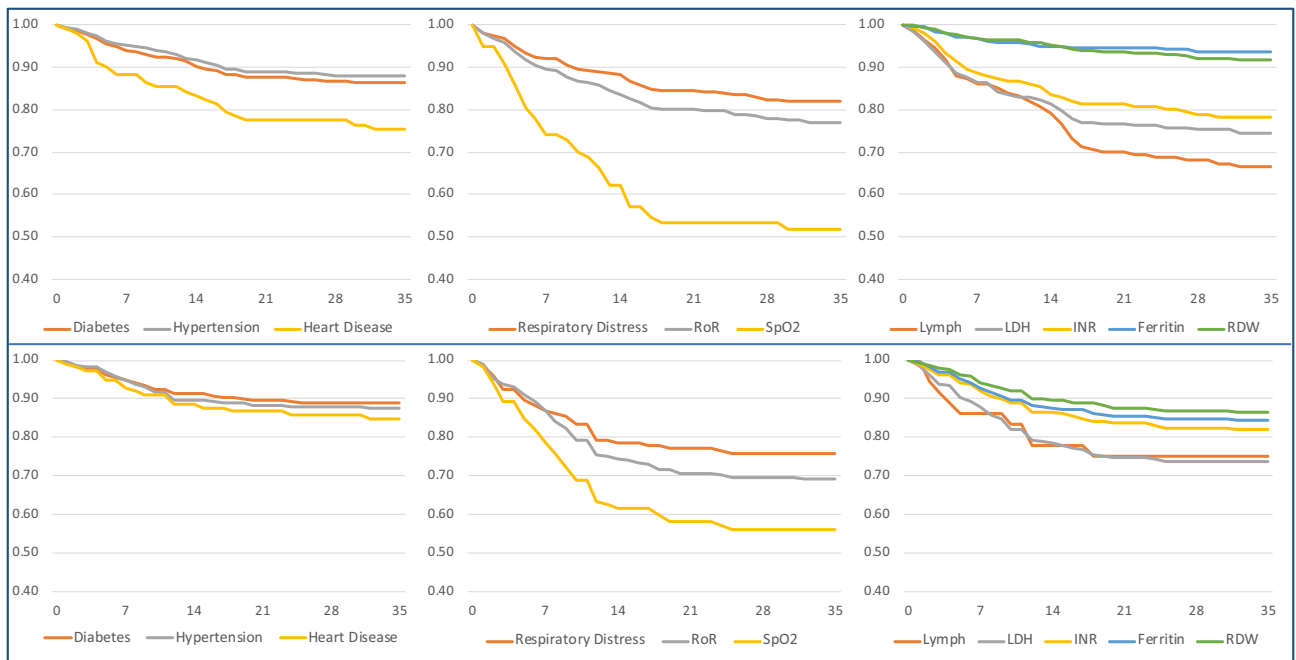


Figure 5. The Graphs compare the KM Plots with the Model (N = 1393) [ABOVE] vs. the Validation (N = 977) [BELOW] Cohorts. The Comorbidities, Respiratory condition at admission, and the significant lab parameters are studied over five weeks for survival from the time of admission. The cut off values for Respiratory Rate \rightarrow 24/min; SpO₂ \leftarrow 90%, Lymphocytes \leftarrow 10%, LDH $>$ 250 U/L, INR $>$ 1.3, Ferritin $>$ 450 microgram/L and RDW $>$ 14.5% are studied here.

patients' subsequent mechanical ventilation and their overall outcome. However, the Kaplan Meir plots (Fig. 5) show outcomes for patients with severe respiratory symptoms at both development and validation cohorts.

The pooled prevalence of Diabetes and Hypertension are 26% and 31.22%, respectively, in the development cohort. The odds of mortality in these comorbid conditions are provided in Table 1, comparable with the meta-analysis conducted by Kumar et al.¹⁷. Hazard ratios associated with Chronic Kidney Disease (3.04, CI 1.72–5.38) (Prevalence 6.2%) shows the higher associated risk with comparable results from ERA-EDTA Council and the ERACODA Working Group¹⁸. The prevalence of Chronic Liver Disease (3.95, CI 1.16–13.42) was comparatively lower than other comorbidities, and hence hazard ratio is higher than other studies¹⁹. Hazard associated Pre-existing Coronary Artery Disease (1.56, CI 0.91–2.69) (Prevalence 7.3%) showed a lesser hazard ratio probably due to timely intervention and management, compared to studies by Cheng Y et al. and China CDC^{20,21}.

In lab features conducted during admission, lymphopenia (Lymphocyte $<$ 12%) had a hazard ratio (1.99, CI 1.23–3.2), which is consistent with the systemic review and meta-analysis²². Other significant factors included pro-inflammatory markers like LDH (cut off \rightarrow 250 U/L), Ferritin (cut off \rightarrow 450 μ g/L), and CRP (cut off \rightarrow 48 mg/L) (See Hazard Ratio—Table 2). This is consistent with various international studies with slightly modified cut-off values^{23–25}. Though the study did not attribute different features like Neutrophil—Lymphocyte Ratio or CRP / Albumin Ratio, it did look into the Hazard Ratios separately²⁵.

As discussed above, the model takes all the above features, reasonably congruent with the published international studies, and provides the prediction using an eXtreme Gradient Boosting (XGB) method. The eXtreme Gradient Boosting (XGB) method is a popular technique that recursively fits multiple predictors and a weak learning system with the residual to increase the model's accuracy using various iterations²⁶. The model inherently identifies the complex data structure—including their interaction and nonlinearity in the context of multiple predictors. For further use, the model would be calibrated with the data provided in the API in Fig. 6 (seen here with dummy data for quality assurance purpose) and continuously improve over a period of time. The Risk Model is available for clinicians at <http://20.44.39.47/covid19v2/page1.php>.

Implication. All measures have been taken to reduce bias, including socio-economic aspects, as Apollo Hospitals admitted patients from all society sections with moderate to severe diseases. Potential clinical use of the Clinical API developed from the AICOVID Algorithm is currently being used in Apollo Hospitals. It can be used in the Indian Subcontinent hospitals with the current accuracy and precision. In the prospective validation study, patient written consents were obtained through an appropriately designed consent form (Annexure 4), paving the way for further research of using written consent in Clinical AI-enabled tools and their appropriate patient information.

The developed model—AICOVID and its corresponding Application—is being utilized for triaging, allocating resources, putting patients into an appropriate clinical protocol, and patient and family education at admission. This has reduced time to appropriate bed allocation and Isolation ER holding times. Further, it has

Covid-19

Coronavirus disease 2019 (COVID-19) is an acute, highly infective, systemic (predominantly respiratory) viral infectious disease caused by severe acute respiratory syndrome coronavirus 2 (SARS-CoV-2). Patients with severe COVID-19 require advanced healthcare resources – including respiratory support and intensive care.

This calculator is developed at Apollo Hospitals, with data of more than 1400 patients using a ML algorithm which includes patient's Demographics, current clinical features, comorbidities and vitals. **We have used Lab Features in this Algorithm.** All fields are mandatory and a proper consent needs to be taken as the algorithm is still under research. Current accuracy of the Algorithm is above 90%.

Patient Registration

Location:

Name:

UHID:

Age in Years:

Gender: Male Female Others

Consent: Patient Next of kin

Covid-19

Clinical History

Fever: Yes No

Cough: Yes No

Respiratory Distress: Yes No

Comorbidities

Diabetes: Yes No

Hypertension: Yes No

Chronic Kidney Disease: Yes No

Heart Disease: Yes No

Patient Vitals

Pulse per minute:

Rate of Respiration per minute:

Covid-19

Result Page

The Mortality Risk Score at the time of Admission is	6.12999999999999955%
The current risk categorization is as follows -	0 - 15% - Low Risk 16 - 30% - Moderate Risk >30% - High Risk
Probability of Mortality in One Week	0.1

Note: This Algorithm currently has an accuracy of 92% with an AUC of the algorithm at 0.88 on the Train Data. This API is for prospective use to validate the model with out of sample data and the details of the patients (anonymized) is captured for analytics and calibration purposes.

Figure 6. The API Generated from the Algorithm which provides the Risk Score for dummy data on their Clinical and Lab Parameters at admission (done for quality assurance purpose).

helped in reducing cost in ordering necessary tests at admission, thereby using patient's and hospitals' resources at optimum.

Similar models have been created at MIT Sloan School¹⁰ and Tencent AI Lab²⁷ using 7 and 10 clinical features and similar accuracy and precision. However, these tools are more specific and accurate to the population whose data is being used to build the models. The steps of the research is conducted in accordance with TRIPOD Checklist²⁸.

Limitation

The model is prepared with Clinical and Laboratory features that are available at the time of admission in Emergency Room or other clinical settings. One of the study's limitations is that it does not include imaging tests done at the time of admission, as many of the critical patients couldn't undergo imaging tests within first 6 h of admission. Due to logistical issues, certain clinical parameters like Body Mass Index (BMI) and follow-up information on patient's ventilation details were not obtained. Furthermore, due to the unavailability of adequate data—certain laboratory markers like D-dimer and Interleukins were excluded. The research team is currently undertaking the analysis of the follow-up care of these patients (survivors).

Geographical and Ethnic acceptance—The Apollo Hospitals included in the study are from Bangalore Chennai, Delhi, Hyderabad, Kolkata, and Navi Mumbai. This provides comprehensive coverage of the Indian population, looking at possible zones. However, further studies are required for validation and calibration purposes in Western and Eastern (including North Eastern) zones. Beyond India, further research is needed to calibrate the model when used in other population like the US, Europe, Middle East, and South East Asia.

Conclusion

This study and model on mortality risk prediction provides insight into the COVID Clinical and Laboratory Parameters at admission with an accuracy of 97% at Development and 93% at Validation Cohort respectively. The model is built to ensure that it can be used in low cost settings to improve triage and resource allocation. This is one of the initial studies reflecting on 'time to event' at admission, accurately predicting patient outcomes, done on the Indian population. Future studies should include a global approach with inclusion of Imaging parameters.

Data availability

Data cannot be shared with any 3rd party.

Received: 9 February 2021; Accepted: 31 May 2021

Published online: 17 June 2021

References

1. World Health Organization. Origin of SARS-CoV-2. 26 March 2020. WHO/2019-nCoV/FAQ/Virus_origin/2020.1. Accessed 10 Aug 2020.
2. Ministry of Health and Family Welfare, COVID-19 India. <https://www.mohfw.gov.in>. Accessed 10 Aug 2020.
3. Asch, D. A. *et al.* Variation in US hospital mortality rates for patients admitted with COVID-19 during the first 6 months of the pandemic. *JAMA Intern. Med.* <https://doi.org/10.1001/jamainternmed.2020.8193> (2020).
4. van Halem, K. *et al.* Risk factors for mortality in hospitalized patients with COVID-19 at the start of the pandemic in Belgium: a retrospective cohort study. *BMC Infect. Dis.* **20**, 897. <https://doi.org/10.1186/s12879-020-05605-3> (2020).
5. Rosenthal, N., Cao, Z., Gundrum, J., Sianis, J. & Safo, S. Risk factors associated with in-hospital mortality in a US National sample of patients with COVID-19. *JAMA Netw. Open.* **3**(12), e2029058. <https://doi.org/10.1001/jamanetworkopen.2020.29058> (2020).

6. Bellan, M. *et al.* Fatality rate and predictors of mortality in an Italian cohort of hospitalized COVID-19 patients. *Sci. Rep.* **10**, 20731. <https://doi.org/10.1038/s41598-020-77698-4> (2020).
7. Alimadadi, A. *et al.* Artificial intelligence and machine learning to fight COVID-19. *Physiol. Genom.* **52**, 200–202. <https://doi.org/10.1152/physiolgenomics.00029.2020> (2020).
8. Pourhomayoun, M., & Shakibi, M. Predicting mortality risk in patients with COVID-19 using artificial intelligence to help medical decision-making. *medRxiv*. <https://doi.org/10.1101/2020.03.30.20047308> (2020).
9. Liang, W. *et al.* Development and validation of a clinical risk score to predict the occurrence of critical illness in hospitalized patients with COVID-19. *JAMA Intern. Med.* <https://doi.org/10.1001/jamainternmed.2020.2033> (2020).
10. Bertsimas, D. *et al.* COVID-19 mortality risk assessment: an international multi-center study. *PLoS ONE* **15**(12), e0243262. <https://doi.org/10.1371/journal.pone.0243262> (2020).
11. Symptoms of Coronavirus. Updated Dec 22, 2020. <https://www.cdc.gov/coronavirus/2019-ncov/symptoms-testing/symptoms.html>.
12. Clinical Management Protocol. COVID-19. Government of India Ministry of Health and Family Welfare Directorate General of Health Services (EMR Division) Version 6. <https://www.mohfw.gov.in/pdf/UpdatedDetailedClinicalManagementProtocolforCOVID19adultsdated24052021.pdf>.
13. Yanez, N. D. *et al.* COVID-19 mortality risk for older men and women. *BMC Public Health* **20**, 1742. <https://doi.org/10.1186/s12889-020-09826-8> (2020).
14. Centre for Disease Control. Older Adults, At greater risk of requiring hospitalization or dying if diagnosed with COVID-19. Updated 13 Dec 2020. <https://www.cdc.gov/coronavirus/2019-ncov/need-extra-precautions/older-adults.html>.
15. Peckham, H. *et al.* Male sex identified by global COVID-19 meta-analysis as a risk factor for death and ICU admission. *Nat. Commun.* **11**, 6317. <https://doi.org/10.1038/s41467-020-19741-6> (2020).
16. Bahl, A. *et al.* Early predictors of in-hospital mortality in patients with COVID-19 in a large American cohort. *Intern. Emerg. Med.* **15**(8), 1485–1499. <https://doi.org/10.1007/s11739-020-02509-7> (2020).
17. Kumar, A. *et al.* Is diabetes mellitus associated with mortality and severity of COVID-19? A meta-analysis. *Diabetes Metab. Syndr. Clin. Res. Rev.* **14**, 535–545 (2020).
18. ERA-EDTA Council; ERACODA Working Group. Chronic kidney disease is a key risk factor for severe COVID-19: a call to action by the ERA-EDTA. *Nephrol. Dial. Transplant.* **36**(1), 87–94. <https://doi.org/10.1093/ndt/gfaa314> (2021).
19. Frager, S. Z. *et al.* Hepatic predictors of mortality in severe acute respiratory syndrome coronavirus 2: role of initial aspartate aminotransferase/alanine aminotransferase and preexisting cirrhosis. *Hepatology*. <https://doi.org/10.1002/hep4.1648> (2021).
20. Nishiga, M. *et al.* COVID-19 and cardiovascular disease: from basic mechanisms to clinical perspectives. *Nat. Rev. Cardiol.* **17**, 543–558. <https://doi.org/10.1038/s41569-020-0413-9> (2020).
21. Matsushita, K. *et al.* The relationship of COVID-19 severity with cardiovascular disease and its traditional risk factors: a systematic review and meta-analysis. *Glob. Heart* **15**(1), 64. <https://doi.org/10.5334/gh.814> (2020).
22. Lu, Q. *et al.* Association of peripheral lymphocyte and the subset levels with the progression and mortality of COVID-19: a systematic review and meta-analysis. *Front. Med. (Lausanne)*. **7**, 558545. <https://doi.org/10.3389/fmed.2020.558545> (2020).
23. Han, Y. *et al.* Lactate dehydrogenase, an independent risk factor of severe COVID-19 patients: a retrospective and observational study. *Aging (Albany NY)*. **12**(12), 11245–11258. <https://doi.org/10.18632/aging.103372> (2020).
24. Ji, D. *et al.* Clinical characteristics predicting progression of COVID-19. *Lancet*. <https://doi.org/10.2139/ssrn.3539674> (2020).
25. Xu, J. *et al.* Associations of procalcitonin, C-reaction protein and neutrophil-to-lymphocyte ratio with mortality in hospitalized COVID-19 patients in China. *Sci. Rep.* **10**, 15058. <https://doi.org/10.1038/s41598-020-72164-7> (2020).
26. Zhang, Z. *et al.* Predictive analytics with gradient boosting in clinical medicine. *Ann. Transl. Med.* **7**(7), 152. <https://doi.org/10.21037/atm.2019.03.29> (2019).
27. Liang, W. *et al.* Early triage of critically ill COVID-19 patients using deep learning. *Nat. Commun.* **11**, 3543. <https://doi.org/10.1038/s41467-020-17280-8> (2020).
28. Collins, G. S., Reitsma, J. B., Altman, D. G. & Moons, K. G. Transparent reporting of a multivariable prediction model for individual prognosis or diagnosis (TRIPOD): the TRIPOD statement. *BMJ* **350**, g7594 (2015).

Acknowledgements

This work was in collaboration between all the six Apollo Hospitals. We would like to thank all the Clinicians, Leadership and Staffs who have contributed in this work. We would specifically like to mention Dr. Anil Tandon from Group Medical Director Office, Mr. Arvind Sivaramakrishnan, Mr. Ranga Nathan, Mr. Bharath Potla, Mr. Junaidh from the Apollo IT team, Mr. Raj Shukla and Mr. Ajith Tomy from Apollo 247 for all their help. We also thank Ms. Jayanthi and the team from Apollo Research and Innovation for their assistance in preparing the protocol for the study and helping out during the IEC Approval process.

Author contributions

S.K.—Conceptualisation, data curation, formal analysis, investigation, methodology, project administration, resources, software, supervision, validation, visualisation, writing—original draft, and writing—review & editing. R.C.—Formal analysis, investigation, methodology, resources, validation, and writing—review & editing. S.P.H.—Formal analysis, investigation, methodology, resources, validation, and writing—review & editing. Accessed verified the underlying data. S.R.S.—Formal analysis, investigation, methodology, resources, validation, and writing—review & editing. Accessed verified the underlying data. N.R.—Formal analysis, investigation, methodology, resources, validation, and writing—review & editing. R.V.—Formal analysis, investigation, methodology, resources, validation, and writing—review & editing. A.S.—Conceptualisation, project administration, resources, software, supervision, validation, and writing—review & editing. S.R.—Conceptualisation, project administration, resources, software, supervision, validation, and writing—review & editing.

Funding

There was no available or separate funding for this research.

Competing interests

The authors declare no competing interests.

Additional information

Supplementary Information The online version contains supplementary material available at <https://doi.org/10.1038/s41598-021-92146-7>.

Correspondence and requests for materials should be addressed to S.K.

Reprints and permissions information is available at www.nature.com/reprints.

Publisher's note Springer Nature remains neutral with regard to jurisdictional claims in published maps and institutional affiliations.



Open Access This article is licensed under a Creative Commons Attribution 4.0 International License, which permits use, sharing, adaptation, distribution and reproduction in any medium or format, as long as you give appropriate credit to the original author(s) and the source, provide a link to the Creative Commons licence, and indicate if changes were made. The images or other third party material in this article are included in the article's Creative Commons licence, unless indicated otherwise in a credit line to the material. If material is not included in the article's Creative Commons licence and your intended use is not permitted by statutory regulation or exceeds the permitted use, you will need to obtain permission directly from the copyright holder. To view a copy of this licence, visit <http://creativecommons.org/licenses/by/4.0/>.

© The Author(s) 2021