

Differential Effect of Proinflammatory Cytokines on Corneal and Conjunctival Epithelial Cell Mucins and Glycocalyx

Kiumars Shamloo^{1,*}, Priya Mistry^{1,*}, Ashley Barbarino¹, Christopher Ross¹, Vishal Jhanji², and Ajay Sharma¹

¹ Chapman University School of Pharmacy, Chapman University, Irvine, CA, USA

² Department of Ophthalmology, School of Medicine, University of Pittsburgh School of Medicine, Pittsburgh, PA, USA

Correspondence: Ajay Sharma, Chapman University School of Pharmacy, Office: Room 267, 9401 Jeronimo Road, Irvine, CA 92866, USA. e-mail: sharma@chapman.edu

Received: March 25, 2021

Accepted: April 30, 2021

Published: June 15, 2021

Keywords: proinflammatory cytokines; ocular surface; mucins; glycocalyx

Citation: Shamloo K, Mistry P, Barbarino A, Ross C, Jhanji V, Sharma A. Differential effect of proinflammatory cytokines on corneal and conjunctival epithelial cell mucins and glycocalyx. *Transl Vis Sci Technol.* 2021;10(7):17, <https://doi.org/10.1167/tvst.10.7.17>

Purpose: Ocular surface mucins and glycocalyx are critical for providing ocular hydration as well lubrication and repelling pathogens or allergens. Elevated levels of tear proinflammatory cytokines in dry eye may have detrimental effect on mucins and glycocalyx. The present study tested the effect of proinflammatory cytokines IL-6, TNF- α , and IFN- γ on membrane-tethered mucins expression, glycocalyx, and viability of ocular surface epithelial cells.

Methods: Stratified cultures of human corneal and conjunctival epithelial cells were exposed to different concentrations of IL-6, TNF- α , and IFN- γ for 24 hours. The mucins gene and protein expressions were quantified by real-time polymerase chain reaction (PCR) and enzyme-linked immunosorbent assay (ELISA). The glycocalyx was imaged using confocal microscopy after staining with Alexa 488-conjugated wheat germ agglutinin lectin. Apoptotic and necrotic cell death was quantified using flow cytometry.

Results: IL-6, TNF- α , and IFN- γ treatment resulted in a significant increase in mucins (MUC)1 and MUC4 gene and protein expression in human corneal epithelial cells but caused no significant changes in the levels of these mucins in conjunctival epithelial cells. Further, these cytokines decreased MUC16 expression in both corneal and conjunctival epithelial cells. Moreover, no notable change in glycocalyx or apoptotic cell death in corneal and conjunctival epithelial cells was noted with any of the tested cytokines, but IL-6 and TNF- α exposure increased necrotic cell death in corneal and conjunctival epithelial cells, respectively.

Conclusions: Our results demonstrate that proinflammatory cytokines have differential effects on human corneal and conjunctival epithelial cell mucins expression, but do not cause any damage to ocular surface epithelial cell glycocalyx.

Introduction

The apical surface of human corneal and conjunctival epithelial cells is covered with a layer of glycocalyx that forms a boundary between these cells and the tear film.¹⁻³ Glycocalyx is a network made up of membrane-tethered mucins, their side chains, and galectin-3.¹⁻⁷ Glycocalyx and mucins are critical for ocular health as they serve many functions, including repelling pathogens, keeping the ocular surface hydrated, protecting the cells against mechanical and chemical damage, as well as reducing friction during blinking.¹⁻⁷

Dry eye or keratoconjunctivitis sicca is a common ocular condition with a high global prevalence. The disease is characterized by loss of tear film homeostasis, tear hyperosmolarity, ocular surface inflammation, and neurosensory abnormalities.^{8,9} Although multiple factors contribute to the pathogenesis of dry eye, the immune-mediated inflammatory response plays a central role in its onset and progression.¹⁰⁻¹⁴ Hyperosmolar stress has been shown to trigger the release of proinflammatory cytokines IL-1, IL-6, and TNF- α from ocular surface epithelial cells.^{15,16} Hyperosmolar stress due to increased tear osmolarity in dry eye disease and the associated release of cytokines can contribute to the early stage of ocular surface

inflammation. Levels of IL-6 and TNF- α have been reported to be elevated in the tears of patients suffering from dry eye.¹⁷ These proinflammatory cytokines along with chemokines are also responsible for activation, maturation, and migration of antigen-presenting cells in the early stages of dry eye disease.¹⁰⁻¹⁴ Subsequently, activated antigen-presenting cells recruit T cells, which have been shown to secrete IL-17 and IFN- γ .¹⁰⁻¹⁴ T cell-derived cytokines contribute to the amplification stage of inflammation in dry eye disease.¹⁰⁻¹⁴

The promoter region of genes encoding for mucins have response elements for signaling pathways activated by proinflammatory cytokines including IL-6, TNF- α , and IFN- γ suggesting that these cytokines can modulate the gene expression of mucins.¹⁸⁻²¹ Additionally, these cytokines have been shown to induce the expression of enzymes, such as heparanase and hyaluronidase that may have a detrimental effect on the glycocalyx.^{22,23} Immunological and conjunctiva impression cytology studies have shown that the levels of mucins or the degree of their glycosylation is notably altered in both the cornea as well as conjunctiva of patients suffering from non-Sjogren and Sjogren syndrome-related dry eye disease.^{1,2,24} Therefore, the present study is designed to investigate the effect of two early-stage (IL-6 and TNF- α) and one amplification stage (IFN- γ) proinflammatory cytokines on membrane-tethered mucins (MUC) MUC1, MUC4, MUC16, ocular surface glycocalyx, and cell viability of human stratified corneal and human stratified conjunctival epithelial cells. Because patients suffering from dry eye have elevated tear levels of these cytokines in picogram range, the present study tested the effect of these cytokines on ocular surface mucins and glycocalyx at the pathologically relevant picogram concentrations.

Methods

Stratified Human Corneal and Conjunctival Epithelial Cell Culture

Telomerase-transformed human corneal and conjunctival epithelial cell lines were used for this study. Human corneal epithelial cells were propagated in keratinocyte growth medium supplemented with bovine pituitary extract (0.004 mL/mL), human epidermal growth factor (0.125 ng/mL), human insulin (5 μ g/mL), hydrocortisone (0.33 μ g/mL), epinephrine (0.39 μ g/mL), transferrin (10 μ g/mL), and calcium chloride (0.15 mM; PromoCell GmbH, Heidelberg, Germany). To induce stratification, the cells were plated on a collagen-coated 3.0 μ m PTFE

transwell membrane inserts (Corning Inc., Corning, NY, USA) and the media was switched to supplemented keratinocyte growth medium containing a higher concentration of CaCl₂ (1.15 mM). This media was added both on the inserts as well as the bottom well until the cells reached 100% confluence. Once the cells reached 100% confluence, the media was added to the bottom of the well only, leaving the membrane inserts containing the cells exposed to air for 1 week to achieve stratification into a multilayered epithelium.²⁵

The human conjunctival epithelial cells were propagated in keratinocyte serum-free medium supplemented with 25 μ g/mL bovine pituitary extract, 0.2 ng/mL epidermal growth factor, and 0.4 mM CaCl₂ (Gibco-Invitrogen Corp., Rockville, MD, USA). Once the cells reached 50% confluence, the media was switched to a 1:1 mixture of supplemented keratinocyte serum-free medium and low-calcium DMEM without HEPES/F12 media (Gibco-Invitrogen Corp., Rockville, MD, USA). When the cells reached 100% confluence, the media was replaced with DMEM/F12 media supplemented with 1 mM CaCl₂, 10% Calf serum, and 10 ng/mL EGF for about 5 to 7 days to induce stratification.^{26,27}

Cytokine Treatments

The cytokines were purchased from PeproTech (Cranbury, NJ, USA). To test the effects of proinflammatory cytokines on mucin expression, glycocalyx, and epithelial viability, the stratified cultures of human corneal and conjunctival epithelial cells were separately exposed to IL-6, TNF- α , and IFN- γ at five different concentrations (30, 60, 125, 250, 500 pg/mL) for 24 hours. Each experiment was conducted in quadruplicate.

Isolation of mRNA and Preparation of cDNA

The total RNA from the control and cytokine exposed stratified corneal and conjunctival epithelial cells was isolated using a commercially available kit (Qiagen's RNeasy Mini Kit, Valencia, CA, USA) as per the manufacturer's instructions. The RNA was immediately reverse transcribed to cDNA using a commercially available kit (SuperScript III First-Stand; Invitrogen, Carlsbad, CA, USA).

Mucin Gene Expression Quantification

The gene expression of MUC1, MUC4, and MUC16 was quantified using real-time polymerase chain reaction (PCR). A 20 μ L reaction mixture containing 2 μ L of cDNA and 18 μ L of SYBR Green

Master Mix was run at a universal cycle (95°C for 10 minutes, 40 cycles at 95°C for 15 seconds, and 55°C for 60 seconds) using real-time thermocycler (Biorad CFX Thermal Cycler; Bio-Rad Laboratories, Hercules, CA, USA). β -actin was used as the housekeeping gene. The relative change in gene expression was calculated using the $\Delta\Delta$ Ct method.

Protein Extraction and Mucin Enzyme-Linked Immunosorbent Assays

To prepare protein extracts, control, and cytokine exposed stratified corneal and conjunctival epithelial cells were incubated for 30 minutes on ice in radioimmunoprecipitation assay (RIPA) buffer containing protease inhibitor (Thermo Fisher Scientific, Rockford, IL, USA) on a shaker followed by the removal of any adherent cells using a cell scraper. The supernatant was collected as total cell lysate, and protein concentration was determined by the BCA method using a commercially available kit (Pierce BCA Protein Assay Kit; Thermo Fisher Scientific). Protein levels of MUC1 (Thermo Fisher Scientific), MUC4, and MUC 16 were quantified in the cell lysate using commercially available enzyme-linked immunosorbent assay (ELISA) kits (LifeSpan Biosciences, Inc., Seattle, WA, USA). For MUC1 and MUC4, 100 μ L of undiluted cell lysate was used. For MUC16, corneal and conjunctival cell lysates were diluted 4 times and 200 times, respectively.

Glycocalyx Staining

The stratified cultures of control and cytokine-exposed human corneal and conjunctival epithelial cells were fixed in 4% paraformaldehyde. The cells were blocked in 5% BSA for 20 minutes. Glycocalyx was stained using 1.5 μ g/mL solution of Alexa 488- conjugated wheat germ agglutinin lectin (Thermo Fisher Scientific, Hanover Park, IL, USA) for 20 minutes. Wheat germ agglutinin lectin binds to the N-acetylglucosamine and N-acetylneuraminic acid residues present on the ocular surface glycocalyx and has been used in multiple studies, including human patients to stain corneal glycocalyx.^{28,29} The stained glycocalyx was imaged using a confocal microscope (Nikon Inc., Mellville, NY, USA). Four images were captured from the randomly selected areas of each cultured well (total $n = 16$ for each cytokine because the experiment was in quadruplicate). The quantification of the glycocalyx stained area was performed using Image J software in a blinded manner.

Flow Cytometry Quantification of Apoptotic and Necrotic Cell Death

The stratified cultures of control and cytokine exposed human corneal and conjunctival epithelial cells were incubated in the dark at room temperature for 10 minutes in a solution containing 1:2000 propidium iodide and 1:300 FITC-conjugated annexin V (Cayman Chemical, Ann Harbor, MI, USA). The PI positive and FITC negative cells were quantified as necrotic. To calculate apoptotic cells, PI positive FITC negative cells were subtracted from PI positive + FITC negative cell population. The populations of stained cells were analyzed using BD FACSverse flow cytometer (BD Sciences, San Jose, CA, USA). The data were analyzed using FlowJo software.

Statistics

The data are presented as mean \pm standard error of mean. Statistical analysis was performed using GraphPad Prism software (GraphPad Prism, version 8; GraphPad, San Diego, CA, USA). The data were analyzed using 1-way ANOVA, followed by Dunnett's post hoc test. A P value of <0.05 was considered statistically significant.

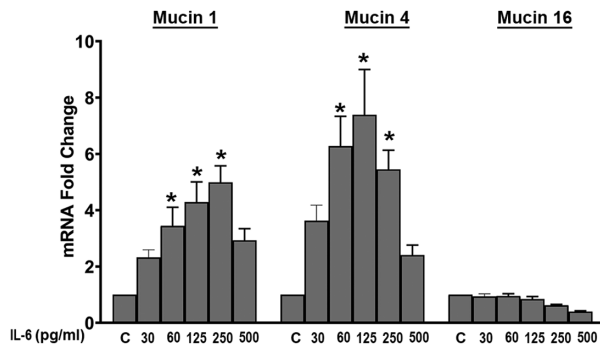
Results

Effect of IL-6, TNF- α , and IFN- γ on Membrane-Tethered Mucins Gene and Protein Expression in Stratified Human Corneal and Conjunctival Epithelial Cells

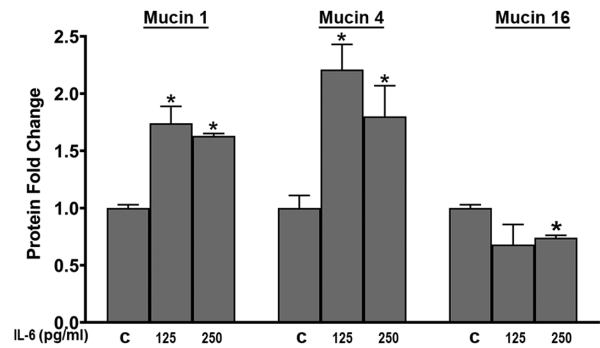
To test the effect of IL-6, TNF- α , and IFN- γ on ocular surface mucins gene expression, the stratified human corneal and conjunctival epithelial cells were exposed to five concentrations of these cytokines.

IL-6 treatment caused a significant increase in the gene expression of MUC1 and MUC4 but caused a notable decrease in the gene expression of MUC16 in the human corneal epithelial cells (Fig. 1A). For both MUC1 and MUC4, IL-6 showed a bell-shaped dose response curve with a less pronounced effect at 30 pg/mL followed by a dose-dependent significant ($P < 0.05$ compared to control cells not exposed to IL-6) increase in gene expression at 60, 125, and 250 pg/mL then a subsequent decrease in effect at 500 pg/mL. In congruence with the gene expression data, IL-6 treatment also caused a significant increase ($P < 0.05$ compared to control cells not exposed to IL-6) in protein levels of MUC1 and MUC4 and a

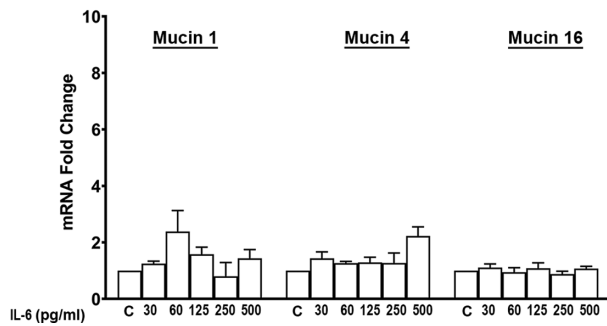
A Effect of IL-6 on mucins gene expression in corneal epithelial cells



B Effect of IL-6 on mucins protein expression in corneal epithelial cells



C Effect of IL-6 on mucins gene expression in conjunctival epithelial cells



D Effect of IL-6 on mucin 16 protein expression in conjunctival epithelial cells (Very low levels of mucin 1 and mucin 4 were detected)

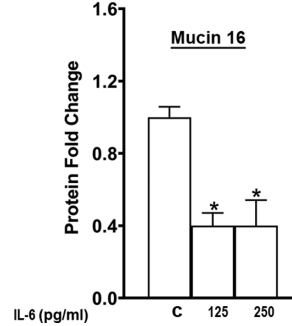
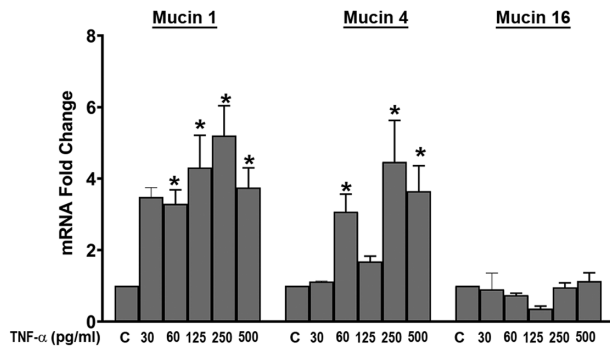
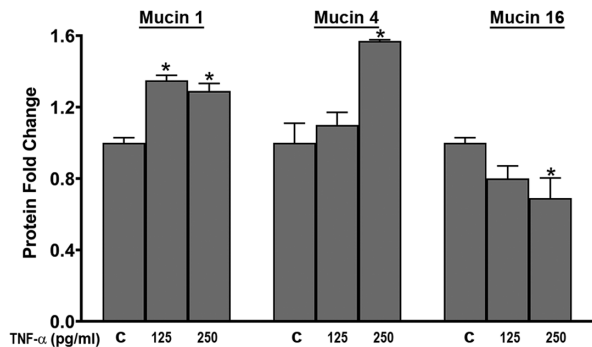


Figure 1. Effect of IL-6 on MUC1, MUC4, MUC16 gene, and protein expression in stratified cultures of human corneal (**A, B**) and conjunctival (**C, D**) epithelial cells. The cells were exposed to IL-6 for 24 hours. * $P < 0.05$ compared to control cells (**C**) that were not exposed to IL-6.

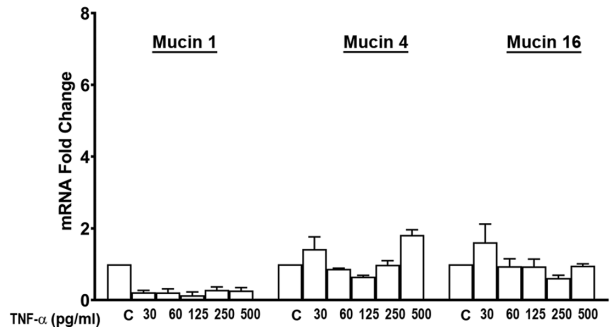
A Effect of TNF- α on mucins gene expression in corneal epithelial cells



B Effect of TNF- α on mucins protein expression in corneal epithelial cells



C Effect of TNF- α on mucins gene expression in conjunctival epithelial cells



D Effect of TNF- α on mucin 16 protein expression in conjunctival epithelial cells (Very low levels of mucin 1 and mucin 4 were detected)

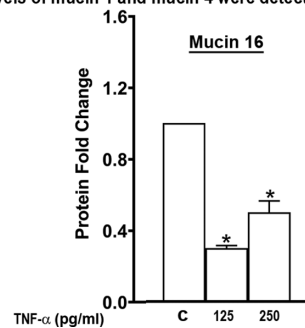


Figure 2. Effect of TNF- α on MUC1, MUC4, MUC16 gene, and protein expression in stratified cultures of human corneal (**A, B**) and conjunctival (**C, D**) epithelial cells. The cells were exposed to TNF- α for 24 hours. * $P < 0.05$ compared to control cells (**C**) that were not exposed to TNF- α .

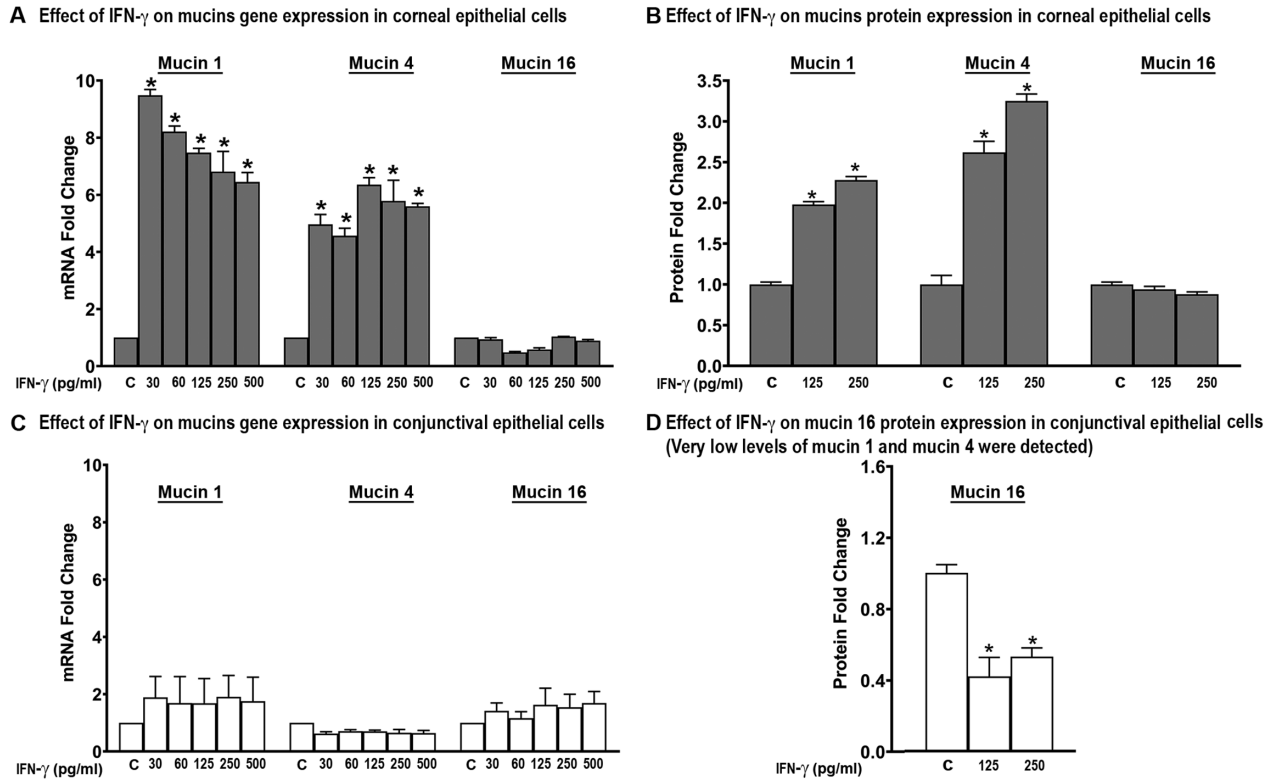


Figure 3. Effect of IFN- γ on MUC1, MUC4, and MUC16 gene expression in stratified cultures of human corneal (A, B) and conjunctival (C, D) epithelial cells. The cells were exposed to IFN- γ for 24 hours. * $P < 0.05$ compared to control cells (C) that were not exposed to IFN- γ .

significant decrease ($P < 0.05$ compared to control cells not exposed to IL-6) in MUC16 in corneal epithelial cells (Fig. 1B). Compared to corneal epithelial cells, very low levels of MUC1 and MUC4 proteins were detected in human conjunctival epithelial cells. Furthermore, IL-6, in contrast to the corneal epithelial cells, did not significantly change MUC1, MUC4 gene and protein expression, and MUC16 gene expression in stratified human conjunctival epithelial cells but it caused a significant decrease in MUC16 protein levels (Figs. 1C, 1D).

TNF- α treatment also caused significant ($P < 0.05$ compared to control cells not exposed to TNF- α) increase in the gene expression of MUC1 and MUC4 in stratified human corneal epithelial cells but did not cause any notable change in MUC16 (Fig. 2A). It is worth noting that the various tested concentrations of TNF- α caused a similar increase in the gene expression of MUC1 and MUC4 suggesting that the effect of TNF- α may not be dose-dependent but a likely response of all or no pattern. Consistent with the changes in gene expression, 250 pg/mL dose of TNF- α caused a significant ($P < 0.05$ compared to control cells not exposed to TNF- α) increase in MUC1 and MUC4 protein levels but this dose also caused a signif-

icant decrease in MUC16 protein levels (Fig. 2B). On the other hand, TNF- α did not cause any notable change in MUC1, MUC4 gene and protein expression, and MUC16 gene expression in the stratified human conjunctival epithelial cells. However, similar to the effect observed in corneal epithelial cells, TNF- α caused a significant decrease in MUC16 protein expression (Fig. 2D).

Consistent with the effects observed with IL-6 and TNF- α , IFN- γ exposure also caused a significant ($P < 0.05$ compared to control cells not exposed to IFN- γ) increase in the both the gene and protein expression of MUC1 and MUC4 in the stratified human corneal epithelial cells but did not cause any change in MUC16 gene and protein expression (Figs. 3A, 3B). Various doses of IFN- γ also caused a similar increase in the gene expression of MUC1 and MUC4 suggesting that the effect of IFN- γ is not dose-dependent but follows all or no response. Akin to the other two cytokines, IFN- γ also did not cause any significant change in the gene expression of MUC1, MUC4, and MUC 16 (Fig. 3C) in stratified human conjunctival epithelial cells but it caused a significant decrease in MUC16 protein levels (Fig. 3D).

Effect of IL-6, TNF- α , and IFN- γ on Stratified Human Corneal and Conjunctival Epithelial Cell Glycocalyx

The integrity of glycocalyx is important for the barrier, lubrication, and hydration functions of ocular surface epithelial cells.^{1,2} Glycocalyx, along with mucins, contains side-chain structural and chemical components to form a network.¹⁻⁷ Proinflammatory cytokines have been shown to increase enzymes that can digest these components and damage glycocalyx.^{22,23} Therefore, we next tested the effect of these proinflammatory cytokines on human corneal and conjunctival epithelial cell glycocalyx. Wheat germ agglutinin lectin binds to the sialic acid residues and has been previously used to stain the glycocalyx.^{28,29} Figure 4 shows the top projection of 3-D confocal images of glycocalyx (stained green with wheat germ agglutinin) in stratified human corneal epithelial cells. As shown in Figure 4, treatment of corneal epithelial cells with IL-6, TNF- α , and IFN- γ (250 pg/mL) did not cause any detrimental effect on corneal epithelial cells glycocalyx. Digital quantification of randomly captured images revealed an average stained area of $92 \pm 6\%$ in control corneal epithelial cells, $93 \pm 8\%$ in IL-6 treated corneal epithelial cells, $90 \pm 10\%$ in TNF- α treated corneal epithelial cells, and $92 \pm 9\%$ in IFN- γ treated stratified human corneal epithelial cells.

Figure 5 shows the top projection of 3-D confocal images of glycocalyx (stained green with wheat germ

agglutinin) in stratified human conjunctival epithelial cells. As was seen with the corneal epithelial cells, treatment with IL-6, TNF- α , and IFN- γ (250 pg/mL) did not cause any detrimental effect on conjunctival epithelial cells glycocalyx. Digital quantification of randomly captured images revealed an average stained area of $80 \pm 11\%$ in control corneal epithelial cells, $79 \pm 8\%$ in IL-6 treated corneal epithelial cells, $81 \pm 10\%$ in TNF- α treated corneal epithelial cells, and $77 \pm 9\%$ in IFN- γ treated conjunctival epithelial cells.

Effect of IL-6, TNF- α , and IFN- γ on Stratified Human Corneal and Conjunctival Epithelial Cell Necrosis, Apoptosis, and Morphology

Loss of epithelial cell viability can compromise ocular surface health and perpetuate inflammation. Therefore, we next tested the effect of IL-6, TNF- α , and IFN- γ on human corneal and conjunctival epithelial cell necrosis and apoptosis by flowcytometry (scatter plot, Supplementary Fig.). None of the cytokines caused any significant increase in apoptotic cell death of human corneal epithelial cells (Fig. 6A). Interestingly, IL-6 treatment (250 pg/mL) caused an increase in necrotic cell death (see Fig. 6A). Like the effect observed in human corneal epithelial cells, none of the tested cytokines caused any increase in apoptotic cell death of human conjunctival epithelial cells (Fig. 6B). In contrast to human corneal epithelial cells, TNF- α instead of IL-6 caused an increase in

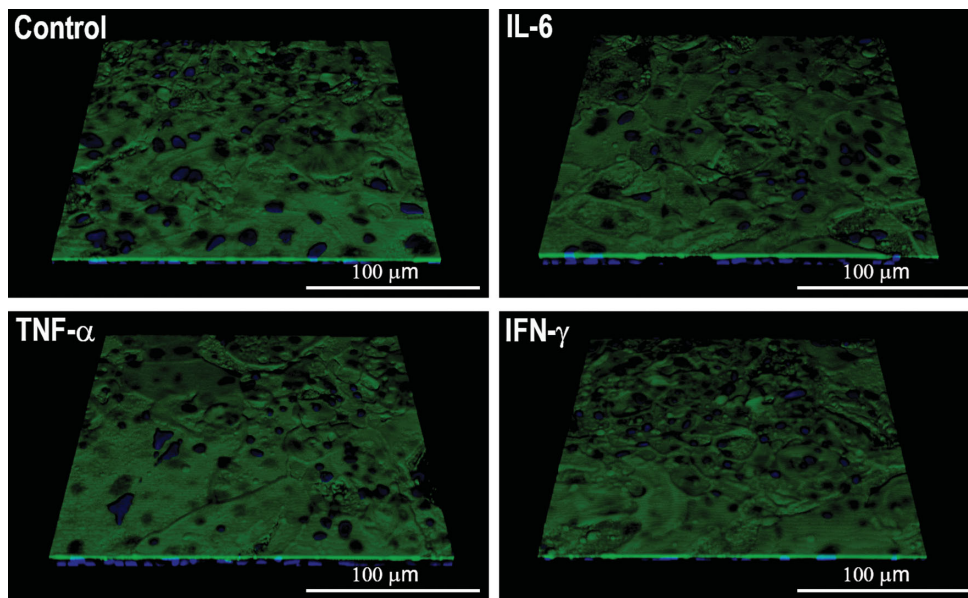


Figure 4. Representative confocal Z-stack images showing glycocalyx staining in stratified cultures of human corneal epithelial cells exposed to IL-6, TNF- α , and IFN- γ (250 pg/mL) for 24 hours. Nuclei are stained blue with DAPI and glycocalyx is stained green with Alexa-488 conjugated wheat germ agglutinin lectin. Scale bar = 100 μm .

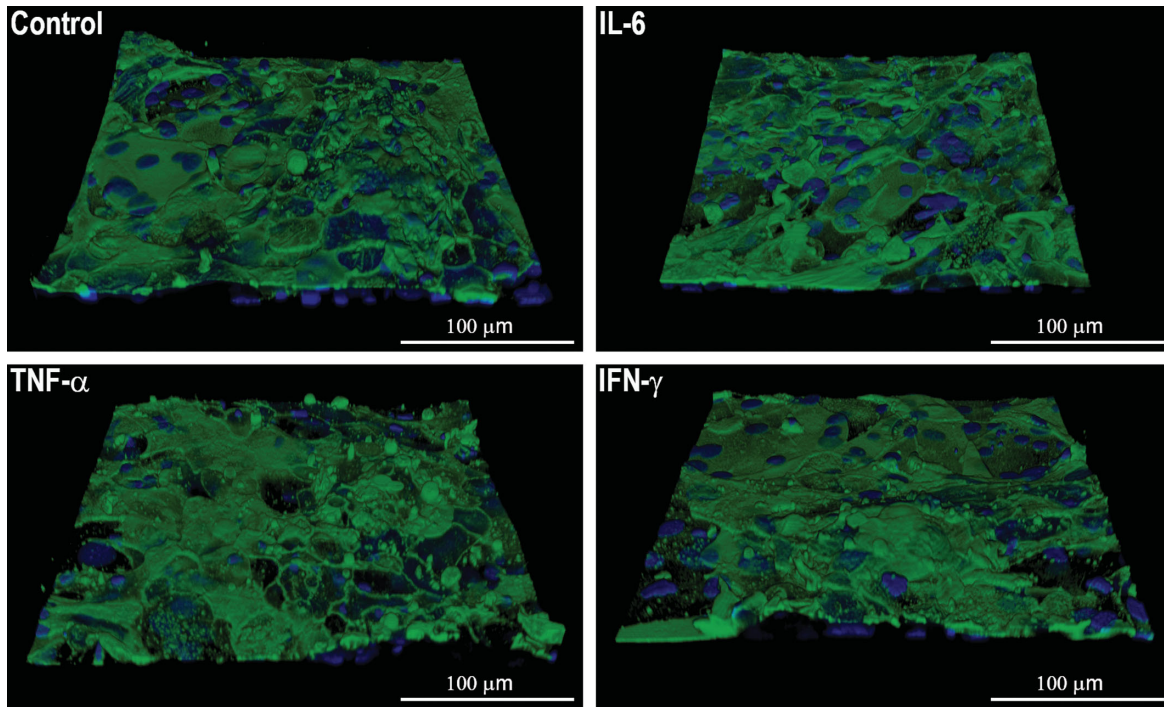


Figure 5. Representative confocal Z-stack images showing glycoalyx staining in stratified cultures of human conjunctival epithelial cells exposed to IL-6, TNF- α , and IFN- γ (250 pg/mL) for 24 hours. Nuclei are stained blue with DAPI and glycoalyx is stained green with Alexa-488 conjugated wheat germ agglutinin lectin. Scale bar = 100 μ m.

the necrotic cell death of human conjunctival epithelial cells. However, none of the three tested cytokines caused any apparent change in morphology of corneal or conjunctival epithelial cells or no visible decrease in cell density was observed suggesting that the cytokines did not cause any stress, toxicity, or transdifferentiation (Fig. 7).

Discussion

Cytokines play an important role in the initiation and perpetuation of dry eye disease.^{10–14,30,31} Exposing ocular surface epithelial cells to hyperosmolar stress causes the release of proinflammatory cytokines.^{15,16} The level of these proinflammatory cytokines is also significantly increased in the tears of patients with dry eye and the conjunctiva of patients with dry eye with Sjogren's syndrome.^{17,31,32} An inverse correlation has been demonstrated between the levels of these cytokines and the fluorescein staining, and goblet cell density.³² Further, topical cyclosporine, a potent immunosuppressant that reduces proinflammatory cytokines, has been shown to modulate ocular surface mucins and increase goblet cell density.^{33,34}

The apical surface of corneal and conjunctival epithelial cells is covered with glycoalyx.^{1–7} Membrane-tethered mucins are important components of glycoalyx.^{1–7} Multiple studies have shown that proinflammatory cytokines can modulate the expression of membrane-tethered mucins in oral, nasal, and respiratory mucosal epithelium.^{35–38} The results of the present study demonstrate that IL-6, TNF- α , and IFN- γ increase the expression of MUC1 and MUC4 in the corneal epithelial cells at the picogram levels. Interestingly, our data demonstrates that these cytokines do not affect the MUC1 and MUC4 expression in conjunctival epithelial cells. Although both corneal and conjunctival epithelial cells are reported to express the receptors for these cytokines,^{39–41} the differential effect of these cytokines on MUC1 and MUC4 gene expression in corneal and conjunctival epithelial cells may be due to differences in the receptor density, presence of decoy molecules, differential activation of signaling pathways, or different response of mucin promoters in the two epithelial cell types. Multiple studies have demonstrated that MUC1 has anti-inflammatory properties due to the negative regulation of Toll-like receptors.^{42,43} Studies have also demonstrated that MUC1 can act as microbial scavenger to limit *Campylobacter jejuni* and *Helicobacter pylori* infection in gastrointestinal tract in mouse model and limit

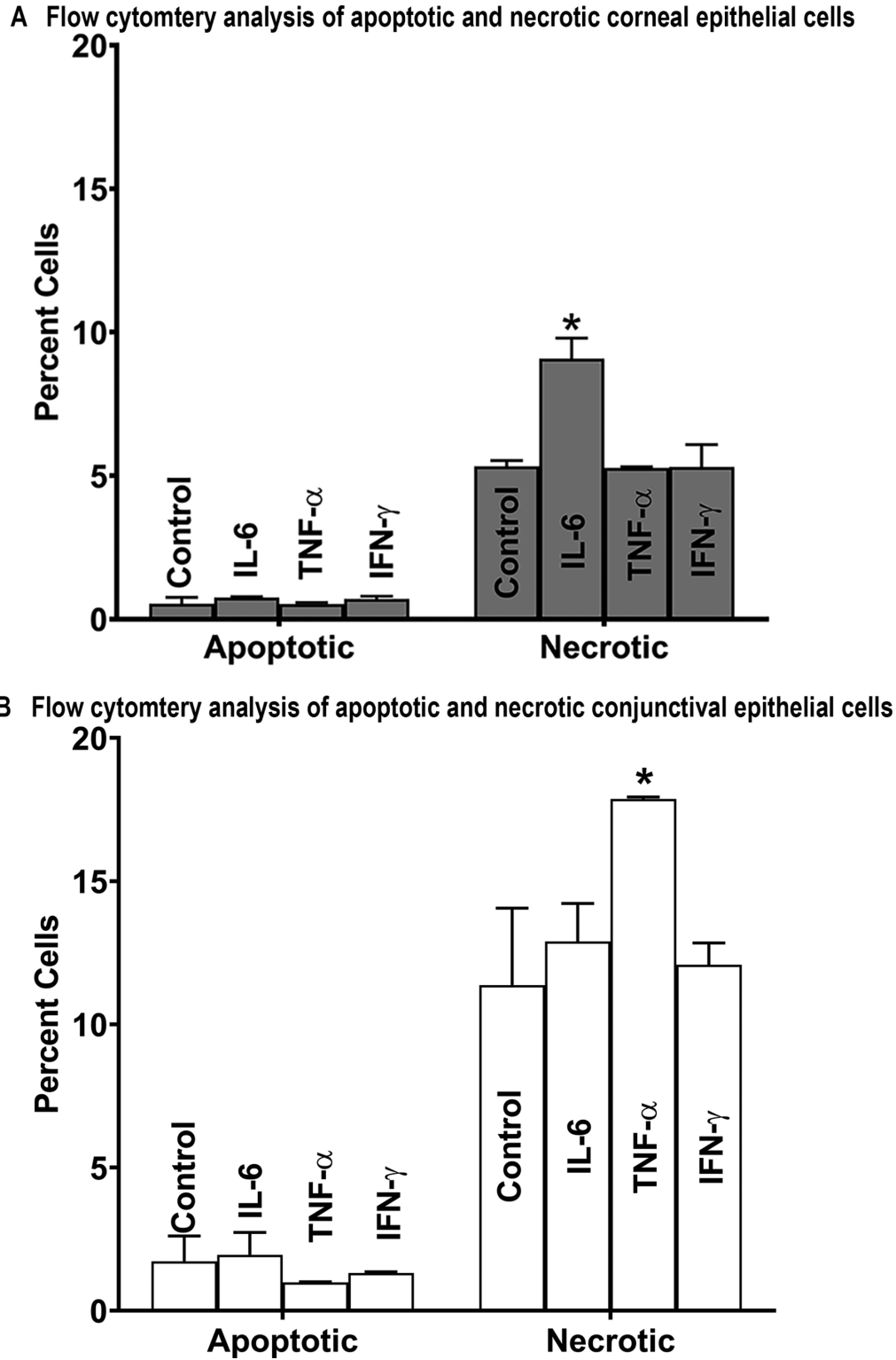


Figure 6. Flow cytometry quantification of apoptosis and necrosis in stratified human corneal (A) and conjunctival (B) epithelial cells treatment with IL-6, TNF- α , and IFN- γ (250 pg/mL) for 24 hours. The cells were stained with annexin V/propidium iodide dual staining for flow cytometry quantification. * $P < 0.05$ as compared to control cells that were not exposed to any cytokine.

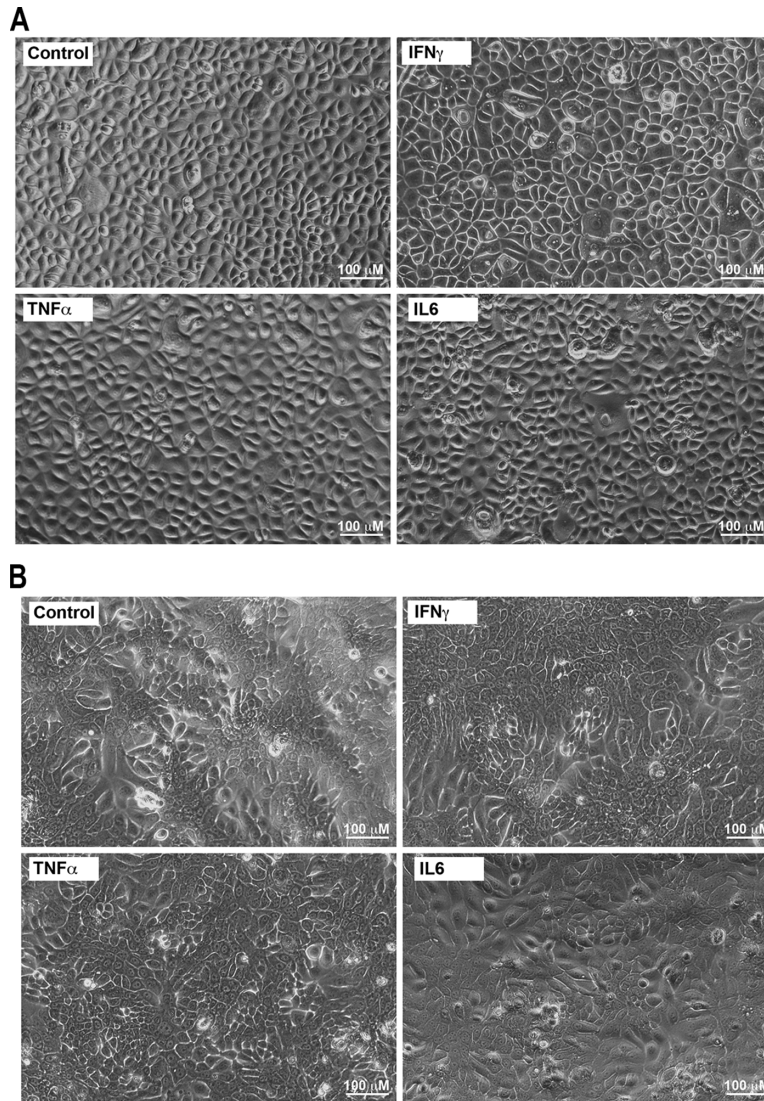


Figure 7. Representative phase contrast microscopy images of stratified human corneal (**A**) and conjunctival (**B**) epithelial cells exposed to IL-6, TNF- α , and IFN- γ (250 pg/mL) for 24 hours. Scale bar = 100 μ m.

S. pneumoniae infection in epithelial cells.^{44–46} Therefore, the cytokine-mediated increase in gene expression of corneal epithelial MUC1 and MUC4 could possibly represent a physiological response to enhance the ocular surface defense against microbial stress. Interestingly, these cytokines caused a significant decrease in the expression of MUC16 in both corneal as well as conjunctival epithelial cells. MUC16 is the largest mucin. It has been shown to be linked to actin cytoskeleton thus providing an adhesive function to glycocalyx and a strong barrier function due to its large size and glycosylation.^{2–6,47–49} MUC16 has also been shown to provide lubrication and regulate innate immune response on ocular surface.^{2–6,47–49} These MUC16 functions are critical for ocular surface

health.^{2–6,47–49} Therefore, our data raises the possibility that cytokine-mediated decrease in MUC16 may partially contribute to ocular surface damage in conditions associated with ocular surface inflammation and elevated levels of proinflammatory cytokines.

Cytokines have also been shown to induce the expression of enzymes, such as heparanase and hyaluronidase, which can damage the mucin side chains, thus compromising the integrity of glycocalyx.^{22,23} TNF- α has been shown to induce endothelial glycocalyx shedding resulting in increased vascular permeability and aberrant vasodilation.⁵⁰ However, results of the present study demonstrate that IL-6, TNF- α , and IFN- γ do not have any detrimental effect on corneal and conjunctival epithelial cell glycocalyx.

Absence of shear stress and blinking effect is a limitation of in vitro stratified epithelia. Thus, it will be worthwhile to further investigate the effect of cytokines on glycocalyx in an in vivo model. Last, none of the cytokines caused an increased in apoptotic cell death, but a small increase in necrotic cell death was noted with TNF- α in conjunctival epithelial cells and with IL-6 treatment in corneal epithelial cells. However, no overt change in morphology or cell density was noted. A difference in receptor density or death signaling pathways activated by TNF- α or IL-6 in the two cell lines may underlie this differential response of corneal and conjunctival epithelial cells to these two cytokines.

In summary, the results of the present study demonstrate that IL-6, TNF- α , and IFN- γ have differential effects on corneal and conjunctival epithelial cells mucins expression and cause an increase in MUC1 and MUC4 gene expression only in corneal epithelial cells but cause a decrease in MUC16. Furthermore, these cytokines did not cause any notable change in the corneal and conjunctival glycocalyx and apoptotic cell death.

Acknowledgments

The authors thank Jessica David and Sally Sun for their help with protein quantification and running some PCR data. We also thank Ilene Gipson, Professor of Ophthalmology, Harvard Medical School, Boston, MA, USA, for providing human conjunctival epithelial cells and James V Jester, Professor, Ophthalmology, School of Medicine, University of California, Irvine, CA, USA, for providing human corneal epithelial cells.

Funded by Chapman University School of Pharmacy (A.S.) and National Eye Institute Grant R15 EY029098 01A1 (A.S.).

Disclosure: **K. Shamloo**, None; **P. Mistry**, None; **A. Barbarino**, None; **C. Ross**, None; **V. Jhanji**, None; **A. Sharma**, None

* KS and PM contributed equally to this paper.

References

1. Uchino Y. The ocular surface glycocalyx and its alteration in dry eye disease: A review. *Invest Ophthalmol Vis Sci*. 2018;59:157–162.
2. Argüeso P. Glycobiology of the ocular surface: mucins and lectins. *Jpn J Ophthalmol*. 2013;57:150–155.
3. Argüeso P, Guzman-Aranguez A, Mantelli F, Cao Z, Ricciuto J, Panjwani N. Association of cell surface mucins with galectin-3 contributes to the ocular surface epithelial barrier. *J Biol Chem*. 2009;284:23037–23045.
4. Govindarajan B, Gipson IK. Membrane-tethered mucins have multiple functions on the ocular surface. *Exp Eye Res*. 2010;90:655–663.
5. Guzman-Aranguez A, Argüeso P. Structure and biological roles of mucin-type O-glycans at the ocular surface. *Ocul Surf*. 2010;8:8–17.
6. Ablamowicz AF, Nichols JJ. Ocular surface membrane-associated mucins. *Ocul Surf*. 2016;14:331–341.
7. Gipson IK. Distribution of mucins at the ocular surface. *Exp Eye Res*. 2004;78:379–388.
8. Craig JP, Nichols KK, Akpek EK, et al. TFOS DEWS II Definition and Classification Report. *Ocul Surf*. 2017;15:276–283.
9. Bron AJ, de Paiva CS, Chauhan SK, et al. TFOS DEWS II pathophysiology report. *Ocul Surf*. 2017;15:438–510.
10. Pflugfelder SC, de Paiva CS. The pathophysiology of dry eye disease: what we know and future directions for research. *Ophthalmology*. 2017;124:S4–S13.
11. Wei Y, Asbell PA. The core mechanism of dry eye disease is inflammation. *Eye Contact Lens*. 2014;40:248–256.
12. Stern ME, Pflugfelder SC. Inflammation in dry eye. *Ocul Surf*. 2004;2:124–130.
13. Periman LM, Perez VL, Saban DR, Lin MC, Neri P. The immunological basis of dry eye disease and current topical treatment options. *J Ocul Pharmacol Ther*. 2020;36:137–146.
14. Stevenson W, Chauhan SK, Dana R. Dry eye disease: an immune-mediated ocular surface disorder. *Arch Ophthalmol*. 2012;130:90–100.
15. Li DQ, Luo L, Chen Z, Kim HS, Song XJ, Pflugfelder SC. JNK and ERK MAP kinases mediate induction of IL-1 β , TNF- α and IL-8 following hyperosmolar stress in human limbal epithelial cells. *Exp Eye Res*. 2006;82:588–596.
16. Igarashi T, Fujimoto C, Suzuki H, et al. Short-time exposure of hyperosmolarity triggers interleukin-6 expression in corneal epithelial cells. *Cornea*. 2014;33:1342–1347.
17. Yoon KC, Jeong IY, Park YG, SY Yang. Interleukin-6 and tumor necrosis factor- α levels in tears of patients with dry eye syndrome. *Cornea*. 2007;26 :431–437.

18. Shekels LL, Ho SB. Characterization of the mouse Muc3 membrane bound intestinal mucin 5' coding and promoter regions: regulation by inflammatory cytokines. *Biochim Biophys Acta*. 2003;1627:90–100.
19. Andrianifahanana M, Singh AP, Nemos C, et al. IFN-gamma-induced expression of MUC4 in pancreatic cancer cells is mediated by STAT-1 upregulation: a novel mechanism for IFN-gamma response. *Oncogene*. 2007;26:7251–7261.
20. Koga T, Kuwahara I, Lillehoj EP, et al. TNF-alpha induces MUC1 gene transcription in lung epithelial cells: its signaling pathway and biological implication. *Am J Physiol*. 2007;293:L693–L701
21. Gaemers IC, Vos HL, Volders HH, van der Valk SW, Hilkens J. A STAT-responsive element in the promoter of the episialin/MUC1 gene is involved in its overexpression in carcinoma cells. *J Biol Chem*. 2001;276:6191–6199.
22. Uchimido R, Schmidt EP, Shapiro NI. The glyco-calyx: a novel diagnostic and therapeutic target in sepsis. *Crit Care*. 2019;23:16.
23. Martin L, Koczera P, Zechendorf E, Schuerholz T. The endothelial glycocalyx: new diagnostic and therapeutic approaches in sepsis. *Biomed Res Int*. 2016;2016:3758278.
24. Danjo Y, Watanabe H, Tisdale AS, et al. Alteration of mucin in human conjunctival epithelia in dry eye. *Invest Ophthalmol Vis Sci*. 1998;39:2602–2609.
25. Robertson DM, Li L, Fisher S, et al. Characterization of growth and differentiation in a telomerase-immortalized human corneal epithelial cell line. *Invest Ophthalmol Vis Sci*. 2005;46:470–478.
26. Albertsmeyer AC, Kakkassery V, Spurr-Michaud S, Beeks O, Gipson IK. Effect of pro-inflammatory mediators on membrane-associated mucins expressed by human ocular surface epithelial cells. *Exp Eye Res*. 2010;90:444–451.
27. Gipson IK, Spurr-Michaud S, Argüeso P, Tisdale A, Ng TF, Russo CL. Mucin gene expression in immortalized human corneal-limbal and conjunctival epithelial cell lines. *Invest Ophthalmol Vis Sci*. 2003;44:2496–2506.
28. Kataoka H, Ushiyama A, Kawakami H, Akimoto Y, Matsubara S, Iijima T. Fluorescent imaging of endothelial glycocalyx layer with wheat germ agglutinin using intravital microscopy. *Microsc Res Tech*. 2016;79:31–37.
29. Fukui M, Yamada M, Akune Y, Shigeyasu C, Tsubota K. Fluorophotometric analysis of the ocular surface glycocalyx in soft contact lens wearers. *Curr Eye Res*. 2016;41:9–14.
30. Massingale ML, Li X, Vallabhajosyula M, Chen D, Wei Y, Asbell PA. Analysis of inflammatory cytokines in the tears of dry eye patients. *Cornea*. 2009;28:1023–1027.
31. Pflugfelder SC, Corrales RM, de Paiva CS. T helper cytokines in dry eye disease. *Exp Eye Res*. 2013;117:118–125.
32. Pflugfelder SC, Jones D, Ji Z, Afonso A, Monroy D. Altered cytokine balance in the tear fluid and conjunctiva of patients with Sjögren's syndrome keratoconjunctivitis sicca. *Curr Eye Res*. 1999;19:201–211.
33. Kunert KS, Tisdale AS, Gipson IK. Goblet cell numbers and epithelial proliferation in the conjunctiva of patients with dry eye syndrome treated with cyclosporine. *Arch Ophthalmol*. 2002;120:330–337.
34. Moore CP, McHugh JB, Thorne JG, Phillips TE. Effect of cyclosporine on conjunctival mucin in a canine keratoconjunctivitis sicca model. *Invest Ophthalmol Vis Sci*. 2001;42:653–659.
35. Samuel EA, Burrows A, Kerschner JE. Cytokine regulation of mucin secretion in a human middle ear epithelial model. *Cytokine*. 2008;41:38–43.
36. Li X, Wang L, Nunes DP, Troxler RF, Offner GD. Pro-inflammatory cytokines up-regulate MUC1 gene expression in oral epithelial cells. *J Dent Res*. 2003;82:883–887.
37. Chen Y, Thai P, Zhao YH, Ho YS, DeSouza MM, Wu R. Stimulation of airway mucin gene expression by interleukin (IL)-17 through IL-6 paracrine/autocrine loop. *J Biol Chem*. 2003;278:17036–17043.
38. Enss ML, Cornberg M, Wagner S, et al. Pro-inflammatory cytokines trigger MUC gene expression and mucin release in the intestinal cancer cell line LS180. *Inflamm Res*. 2000;49:162–169.
39. Mohan RR, Mohan RR, Kim WJ, Wilson SE. Modulation of TNF-alpha-induced apoptosis in corneal fibroblasts by transcription factor NF-kappaB. *Invest Ophthalmol Vis Sci*. 2000;41:1327–1336.
40. Cook EB, Stahl JL, Graziano FM, Barney NP. Regulation of the receptor for TNFalpha, TNFR1, in human conjunctival epithelial cells. *Invest Ophthalmol Vis Sci*. 2008;49:3992–3998.
41. Reinach PS, Pokorny KS. The corneal epithelium: clinical relevance of cytokine-mediated responses to maintenance of corneal health. *Arq Bras Oftalmol*. 2008;71:80–86.
42. Dhar P, McAuley J. The role of the cell surface mucin MUC1 as a barrier to infection and

- regulator of inflammation. *Front Cell Infect Microbiol.* 2019;24:117.
43. Kato K, Lillehoj EP, Lu W, Kim KC. MUC1: The first respiratory mucin with an anti-inflammatory function. *J Clin Med.* 2017;6:110.
 44. McAuley JL, Linden SK, Png CW, et al. MUC1 cell surface mucin is a critical element of the mucosal barrier to infection. *J Clin Invest.* 2007;117:2313–2324.
 45. Lindén SK, Sheng YH, Every AL, et al. MUC1 limits *Helicobacter pylori* infection both by steric hindrance and by acting as a releasable decoy. *PLoS Pathog.* 2009;5:e1000617.
 46. Dhar P, Ng GZ, Dunne EM, Sutton P. Mucin 1 protects against severe *Streptococcus pneumoniae* infection. *Virulence.* 2017;8:1631–1642.
 47. Blalock TD, Spurr-Michaud SJ, Tisdale AS, et al. Functions of MUC16 in corneal epithelial cells. *Invest Ophthalmol Vis Sci.* 2007;48:4509–4518.
 48. Dogru M, Matsumoto Y, Okada N, et al. Alterations of the ocular surface epithelial MUC16 and goblet cell MUC5AC in patients with atopic keratoconjunctivitis. *Allergy.* 2008;63:1324–1334.
 49. Taniguchi T, Woodward AM, Magnelli P, et al. N-Glycosylation affects the stability and barrier function of the MUC16 mucin. *J Biol Chem.* 2017;292:11079–11090.
 50. Chappell D, Hofmann-Kiefer K, Jacob M, et al. TNF-alpha induced shedding of the endothelial glycocalyx is prevented by hydrocortisone and antithrombin. *Basic Res Cardiol.* 2009;104:78–89.